



**SUPERIOR**  
Hays,  
Kansas

**MICRO**  
LOG

Company ETERNITY EXPLORATION, LLC.  
Well BH WERTH #1  
Field WILDCAT  
County GRAHAM  
State KANSAS

Company ETERNITY EXPLORATION, LLC.  
Well BH WERTH #1  
Field WILDCAT  
County GRAHAM State KANSAS

Location: 950' FSL & 2095' FWL  
API #: 15-065-23626-0000  
SEC 30 TWP 9S RGE 25W  
Permanent Datum GROUND LEVEL Elevation 2599  
Log Measured From KELLY BUSHING 5' A.G.L.  
Drilling Measured From KELLY BUSHING  
Other Services CDL/CNL DIL  
Elevation K.B. 2604 D.F. 2602 G.L. 2599

Date	3/23/10
Run Number	TWO
Depth Driller	4375
Depth Logger	4377
Bottom Logged Interval	4375
Top Log Interval	3500
Casing Driller	8 5/8" @ 237'
Casing Logger	234
Bit Size	7 7/8"
Type Fluid In Hole	CHEMICAL MUD
Density / Viscosity	9.2172
pH / Fluid Loss	11.0/6.4
Source of Sample	FLOWLINE
Rm @ Meas. Temp	.950 @ 80F
Rmf @ Meas. Temp	.713 @ 80F
Rmc @ Meas. Temp	1.14 @ 80F
Source of Rmf / Rmc	MEASUREMENT
Rm @ BHT	.639 @ 119F
Time Circulation Stopped	4.5 HOURS
Time Logger on Bottom	12:00 A.M.
Maximum Recorded Temperature	119F
Equipment Number	0836
Location	HAYS, KANSAS
Recorded By	JEFF LUEBBERS
Witnessed By	SCOTT ALBERG

<<< Fold Here >>>

All interpretations are opinions based on inferences from electrical or other measurements and we cannot and do not guarantee the accuracy or correctness of any interpretation, and we shall not, except in the case of gross or willful negligence on our part, be liable or responsible for any loss, costs, damages, or expenses incurred or sustained by anyone resulting from any interpretation made by any of our officers, agents or employees. These interpretations are also subject to our general terms and conditions set out in our current Price Schedule.

**Comments**

THANK YOU FOR USING SUPERIOR WELL SERVICE HAYS, KANSAS (785) 628-6395  
DIRECTIONS  
ST. PETER, KS., 3N. ON (140TH AVE.) TO "RD. H", 3 1/2W., N. INTO

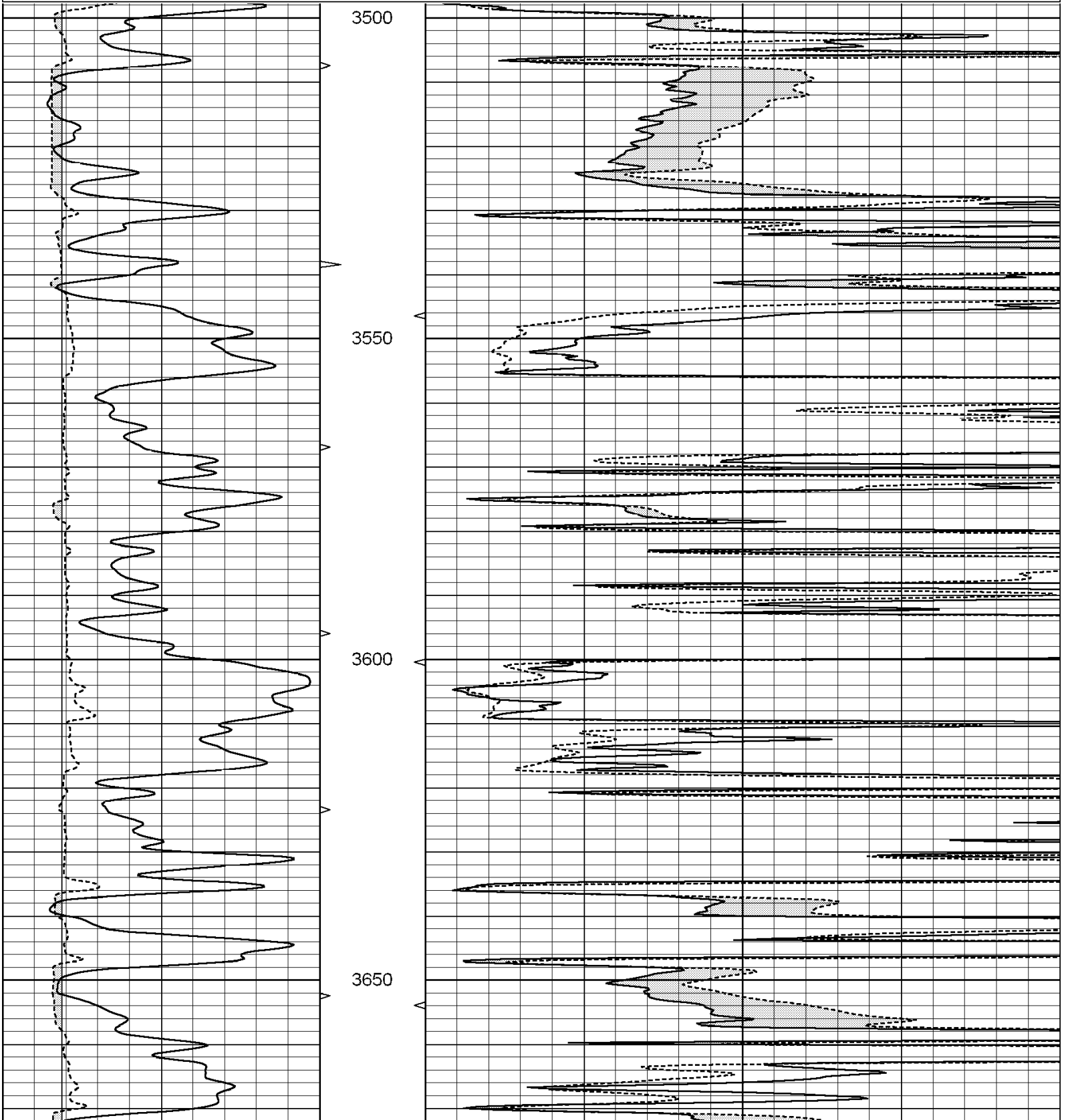


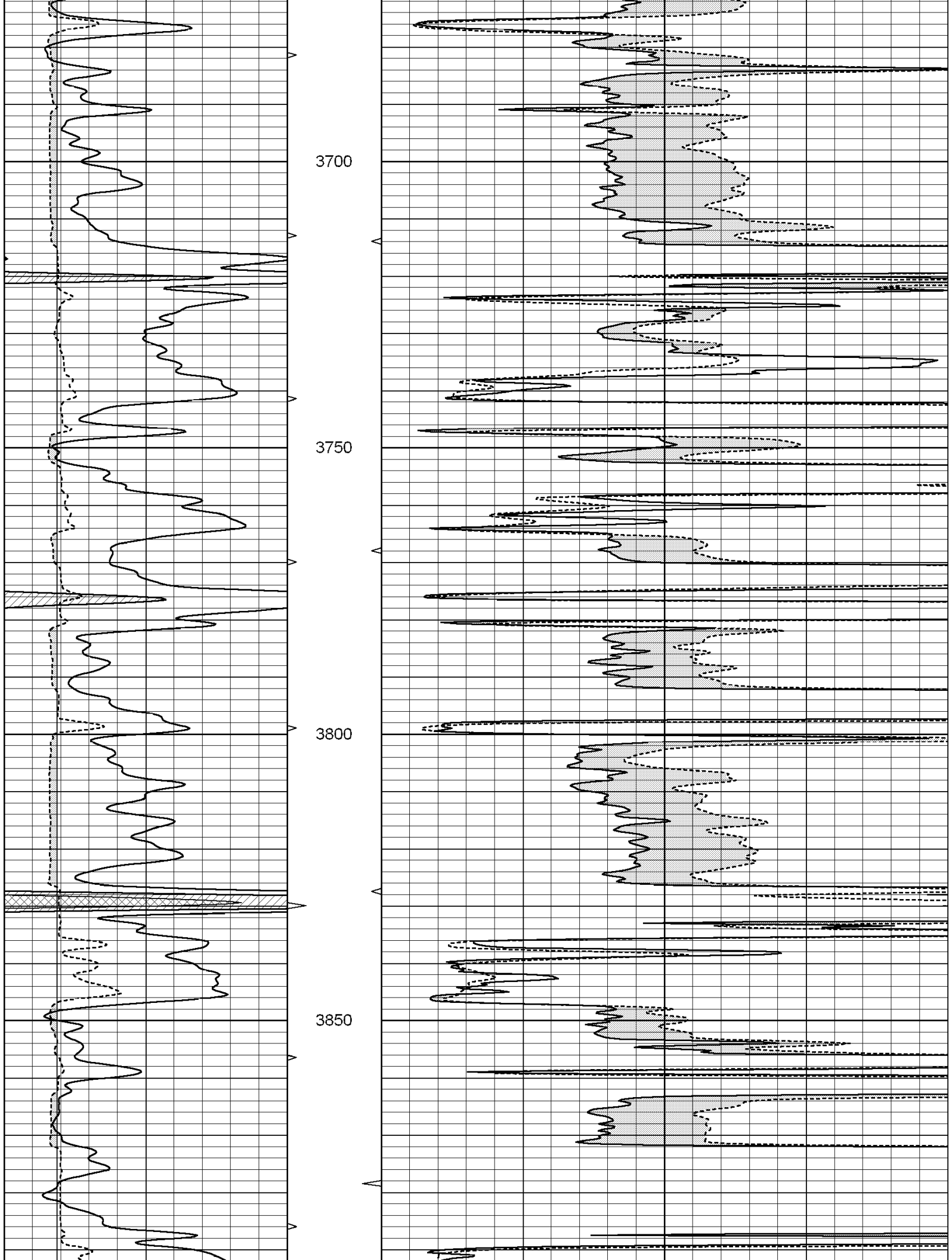
**SUPERIOR**  
Hays,  
Kansas

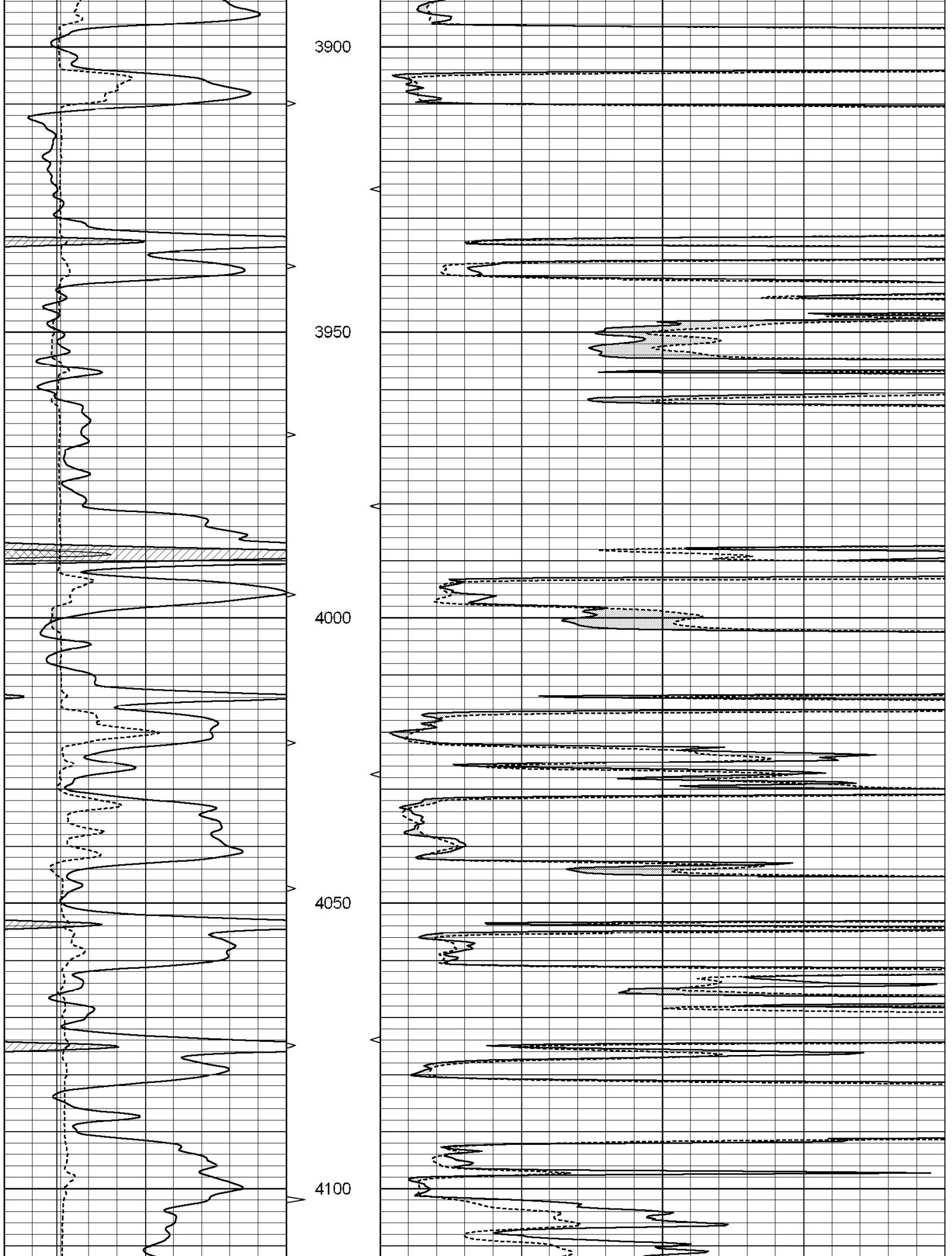
**MAIN SECTION**

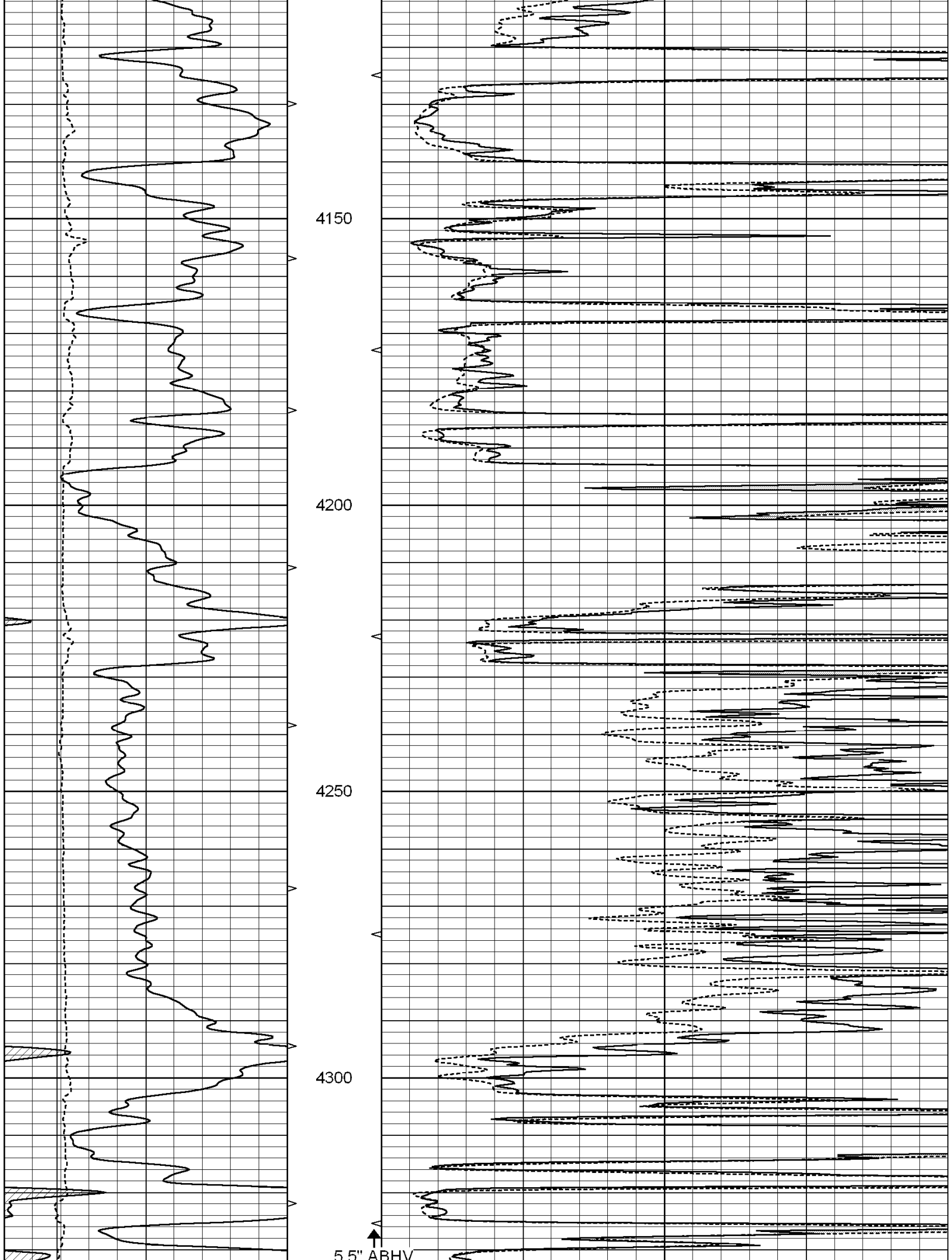
Database File: 004836ddn.db  
 Dataset Pathname: pass6.5  
 Presentation Format: micro  
 Dataset Creation: Wed Mar 24 03:07:12 2010 by Calc Open-Cased 060407  
 Charted by: Depth in Feet scaled 1:240

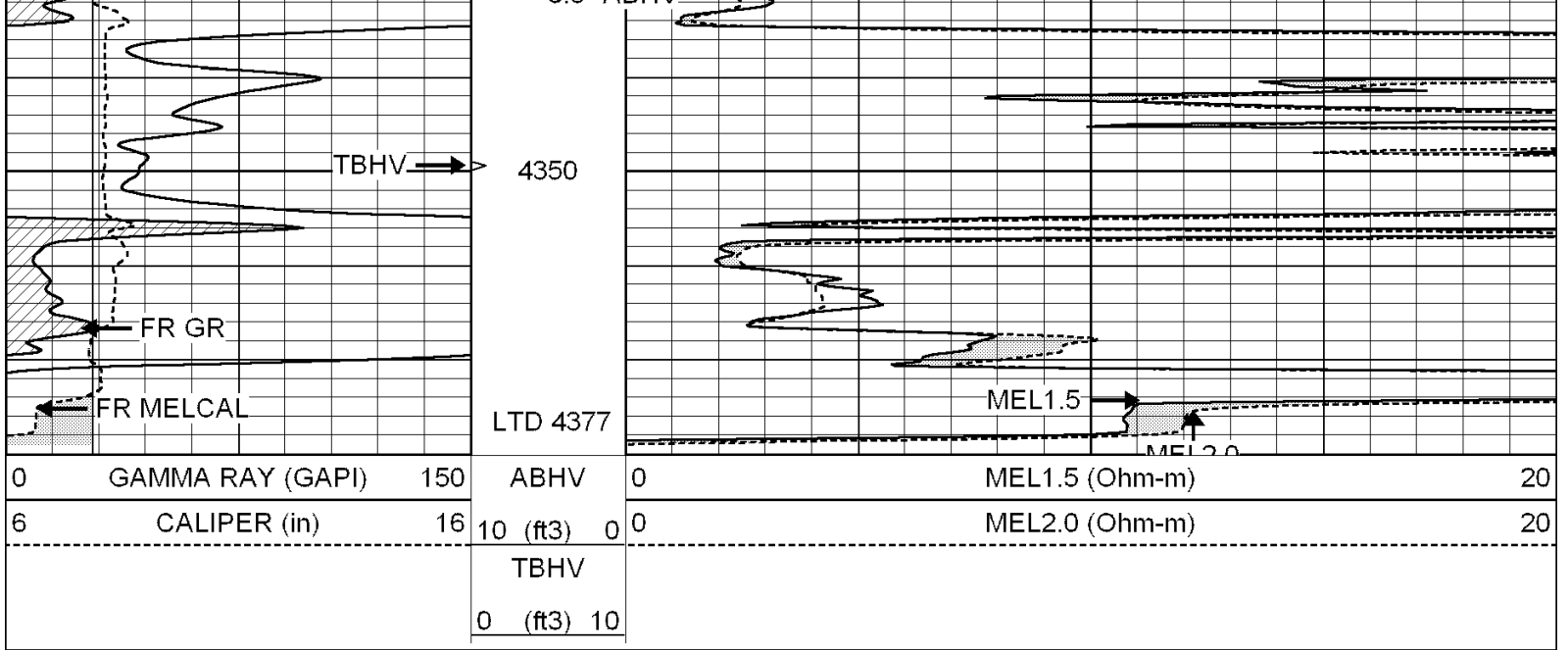
0	GAMMA RAY (GAPI)	150	ABHV	0	MEL1.5 (Ohm-m)	20
6	CALIPER (in)	16	10 (ft3) 0	0	MEL2.0 (Ohm-m)	20
			TBHV			
			0 (ft3) 10			







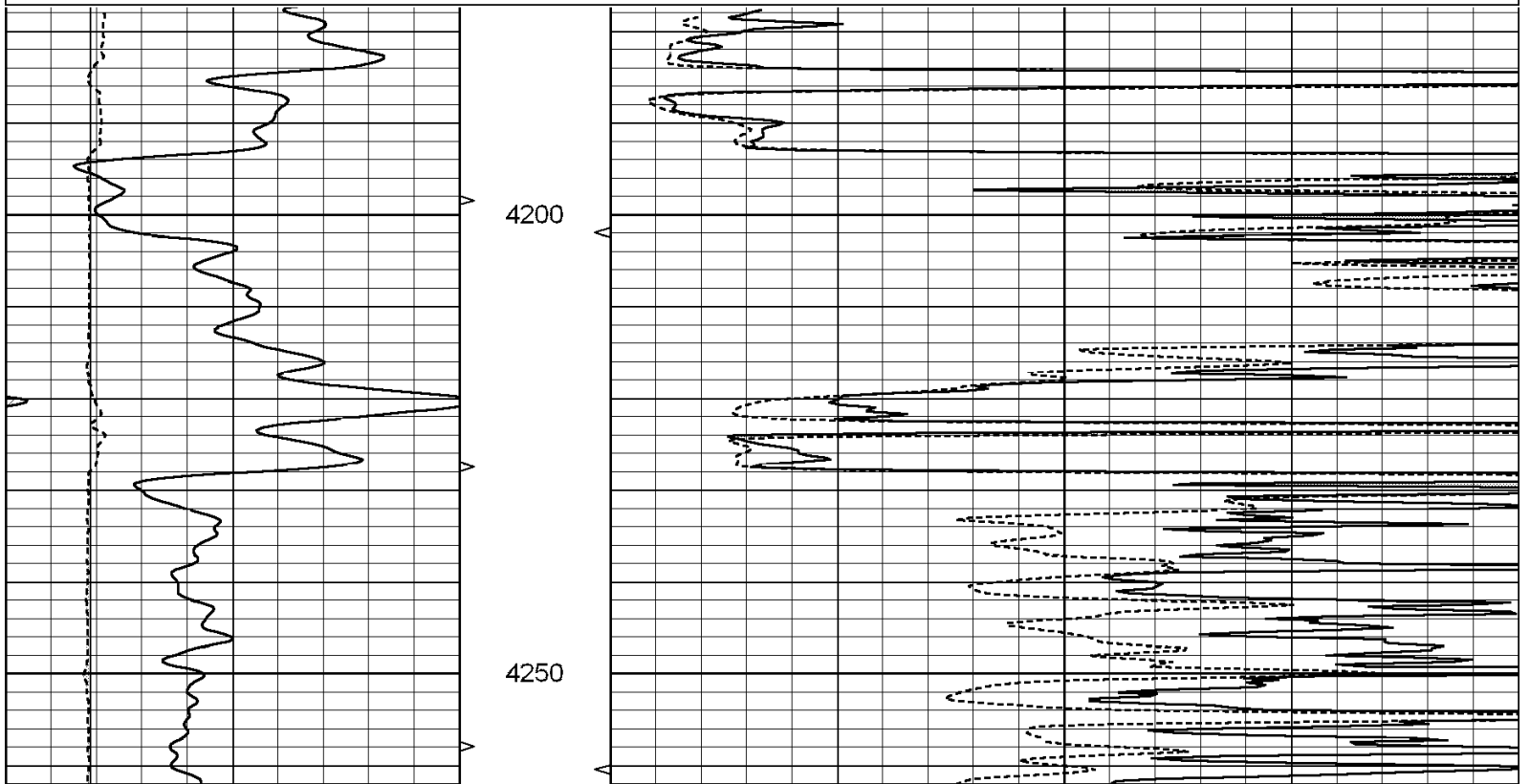


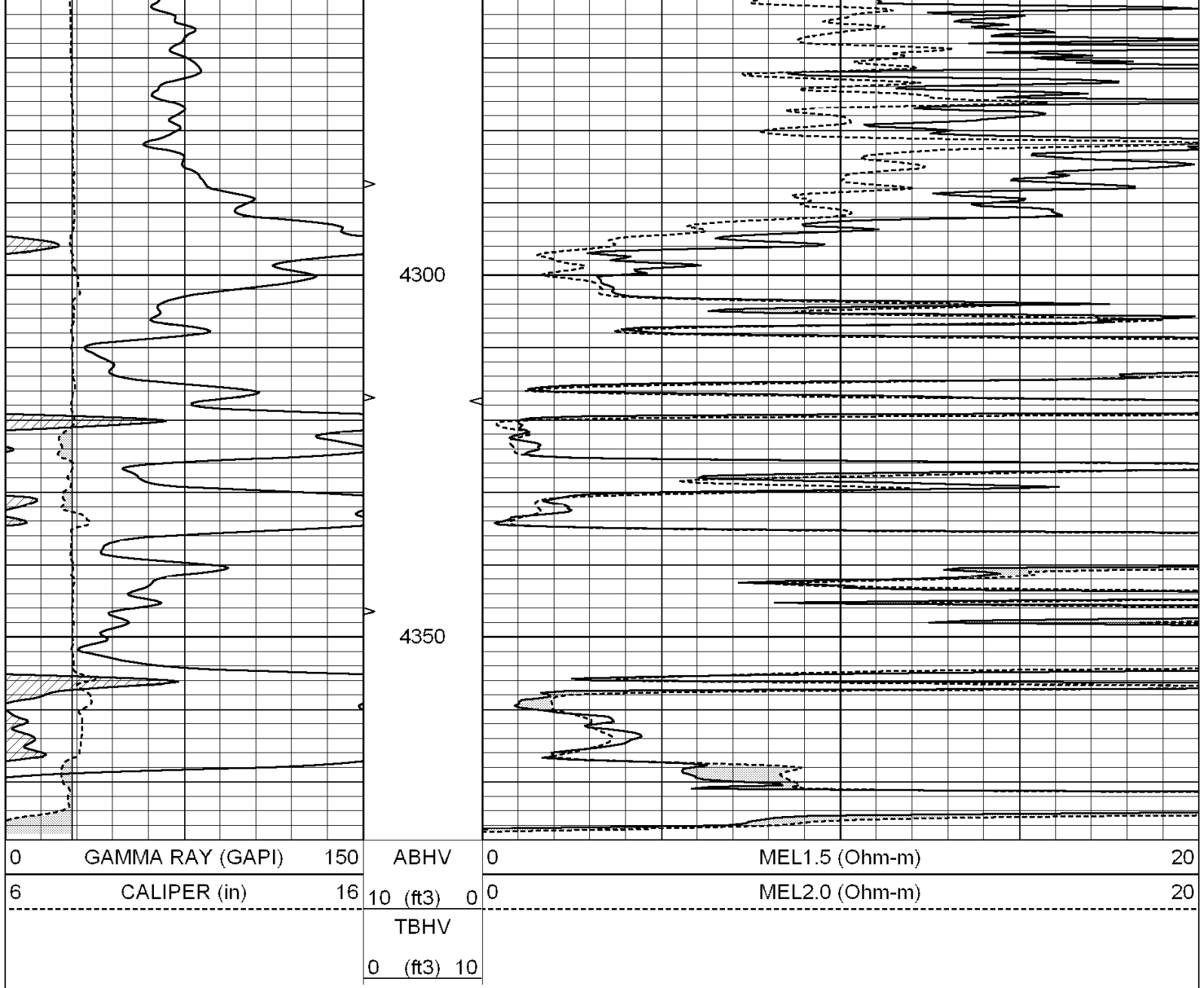


# REPEAT SECTION

Database File: 004836ddn.db  
 Dataset Pathname: pass5.5  
 Presentation Format: micro  
 Dataset Creation: Wed Mar 24 03:00:07 2010 by Calc Open-Cased 060407  
 Charted by: Depth in Feet scaled 1:240

0	GAMMA RAY (GAPI)	150	ABHV	0	MEL1.5 (Ohm-m)	20
6	CALIPER (in)	16	10 (ft3) 0	0	MEL2.0 (Ohm-m)	20
			TBHV			
			0 (ft3) 10			





**Calibration Report**

Database File: 004836ddn.db  
 Dataset Pathname: pass6.5  
 Dataset Creation: Wed Mar 24 03:07:12 2010 by Calc Open-Cased 060407

MICRO Calibration Report			
Serial Number:	2		
Tool Model:	PROBE		
Performed:	Wed Mar 24 02:48:07 2010		
Caliper Calibration:	Gain=5.266	Offset=2.427	
References Readings	Low Cal	High Cal	
	7.200	14.000	
	0.906	2.198	
1.5" Calibration:	Gain=40.000	Offset=-2.400	
References Readings	Low Cal	High Cal	
	0.000	20.000	
	0.065	1.210	
2" Calibration:	Gain=42.000	Offset=-1.700	

	Low Cal	High Cal
References	0.000	20.000
Readings	0.012	1.043

Gamma Ray Calibration Report

Serial Number:	GR3	
Tool Model:	OPEN	
Performed:	Wed Mar 24 02:31:10 2010	
Calibrator Value:	200.0	GAPI
Background Reading:	3.0	cps
Calibrator Reading:	186.0	cps
Sensitivity:	1.1500	GAPI/cps