



SUPERIOR
Hays,
Kansas

SONIC
LOG

Company LARIO OIL & GAS COMPANY
Well KNAPP #1-31
Field WILDCAT
County GOVE
State KANSAS

Company LARIO OIL & GAS COMPANY
Well KNAPP #1-31
Field WILDCAT
County GOVE State KANSAS

Location: API #: 15-063-21823-0000
1061' FNL & 1668' FWL
SEC 31 TWP 13S RGE 31W
Permanent Datum GROUND LEVEL Elevation 2932
Log Measured From KELLY BUSHING 5' A.G.L.
Drilling Measured From KELLY BUSHING
Other Services CDL/CNL/PE DIL/MEL
Elevation K.B. 2937 D.F. 2935 G.L. 2932

Date	2/25/10
Run Number	TWO
Depth Driller	4717
Depth Logger	4718
Bottom Logged Interval	4705
Top Log Interval	200
Casing Driller	8 5/8"@263'
Casing Logger	263
Bit Size	7 7/8"
Type Fluid In Hole	CHEMICAL MUD
Density / Viscosity	9.0/52
pH / Fluid Loss	10.0/8.8
Source of Sample	FLOWLINE
Rm @ Meas. Temp	.500@80F
Rmf @ Meas. Temp	.375@80F
Rmc @ Meas. Temp	.600@80F
Source of Rmf / Rmc	MEASUREMENT
Rm @ BHT	.325@123F
Time Circulation Stopped	5 HOURS
Time Logger on Bottom	12:15 P.M.
Maximum Recorded Temperature	123F
Equipment Number	0836
Location	HAYS, KANSAS
Recorded By	JEFF LUEBBERS
Witnessed By	VERN SCHRAG

<<< Fold Here >>>

All interpretations are opinions based on inferences from electrical or other measurements and we cannot and do not guarantee the accuracy or correctness of any interpretation, and we shall not, except in the case of gross or willful negligence on our part, be liable or responsible for any loss, costs, damages, or expenses incurred or sustained by anyone resulting from any interpretation made by any of our officers, agents or employees. These interpretations are also subject to our general terms and conditions set out in our current Price Schedule.

Comments

THANK YOU FOR USING SUPERIOR WELL SERVICE HAYS, KANSAS (785) 628-6395
DIRECTIONS
OAKLEY, KS. (JUNCTION OF OLD 40 & HWY 83) 20S. ON HWY 83 TO "JAYHAWK RD."(MONUMENT ROCK SIGN) 2E. TO "RD. 10", 4N., E. INTO

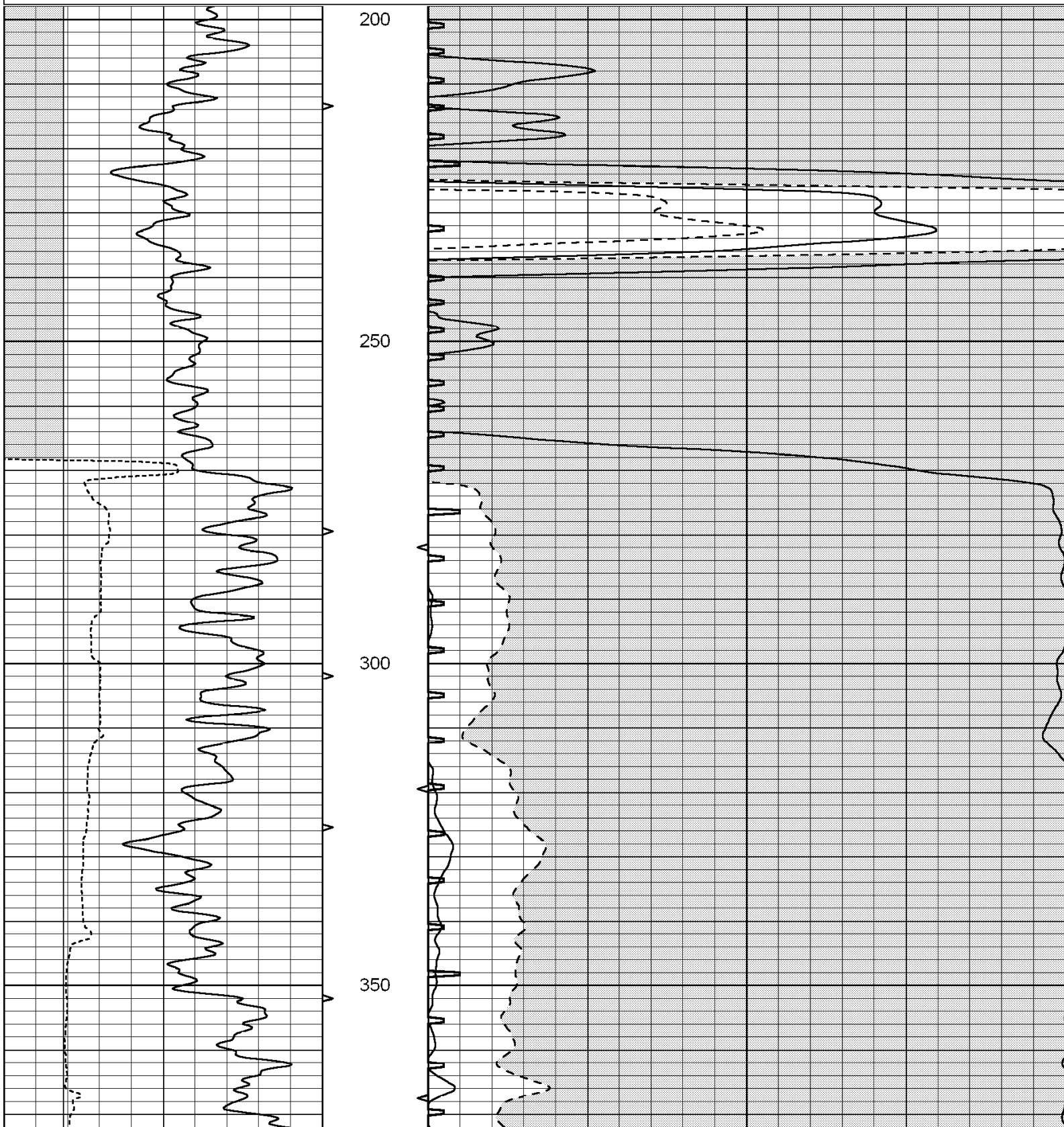


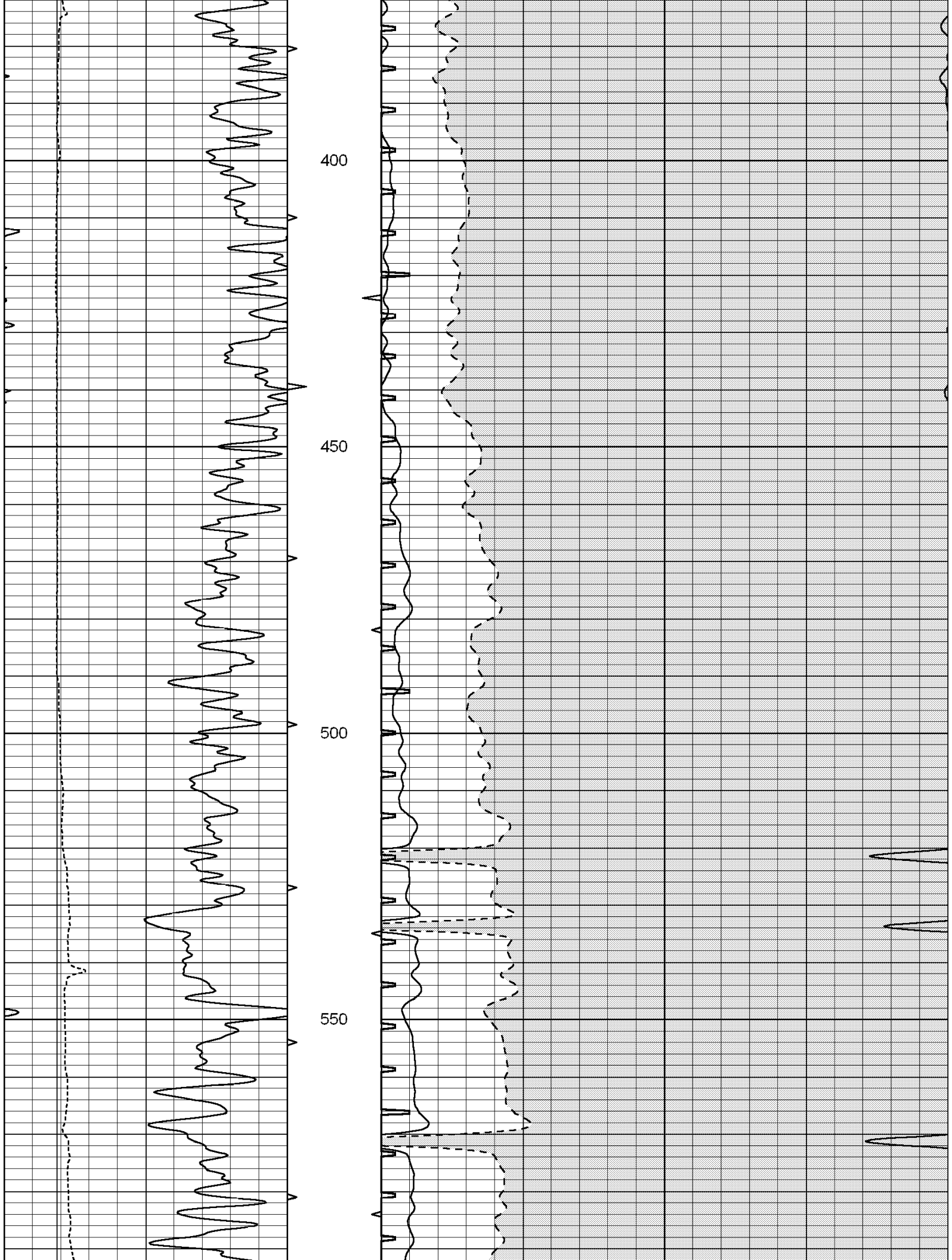
SUPERIOR
Hays,
Kansas

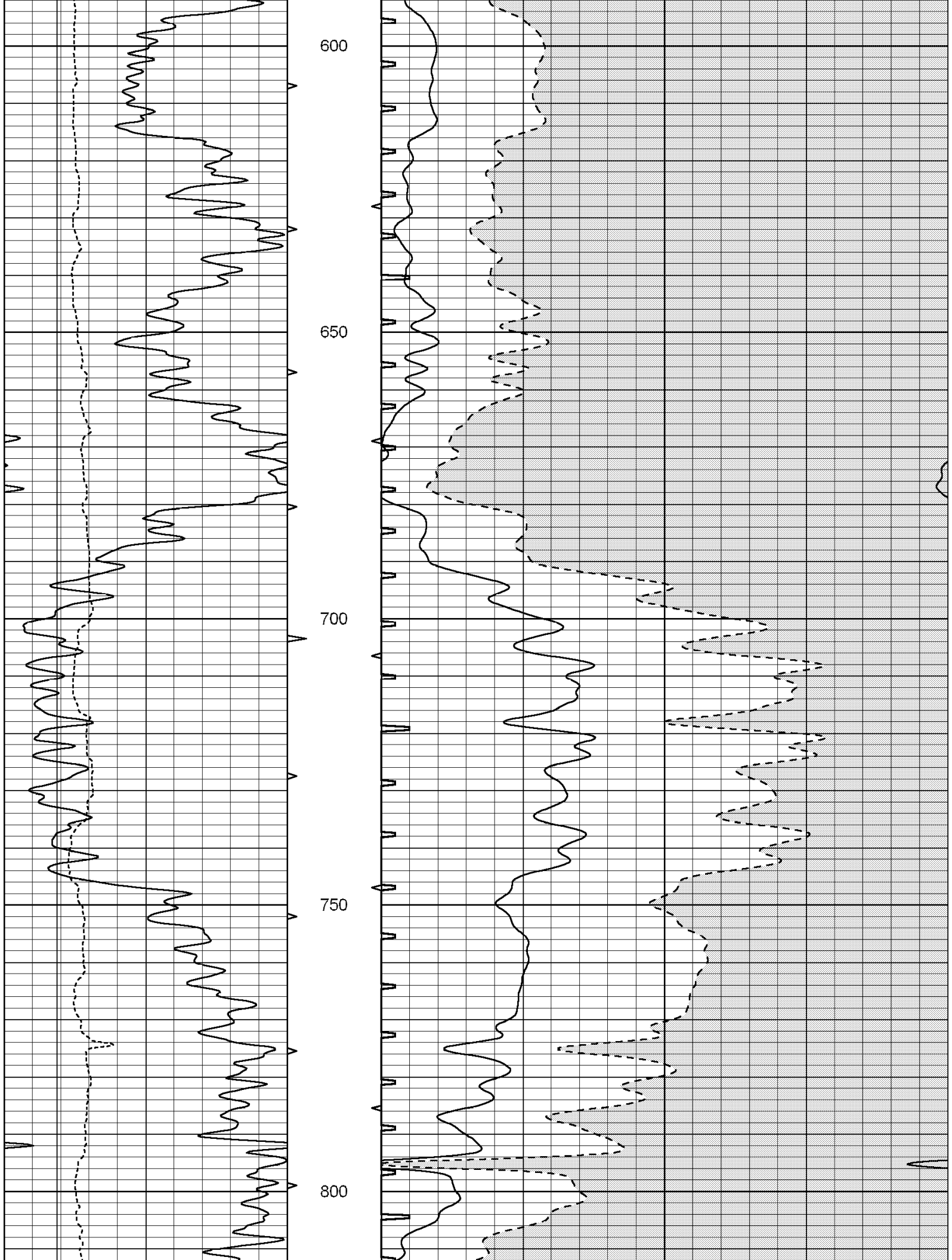
MAIN SECTION

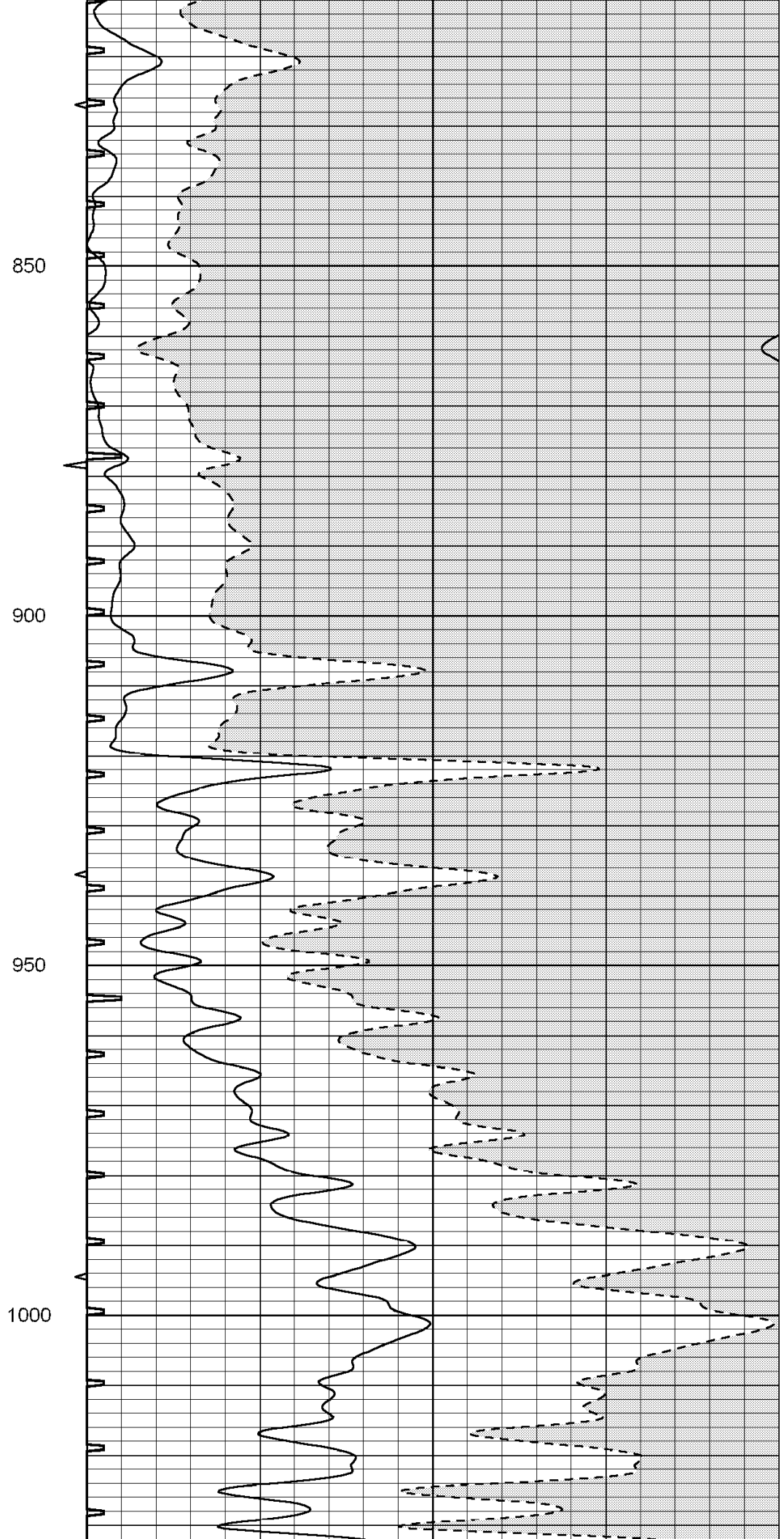
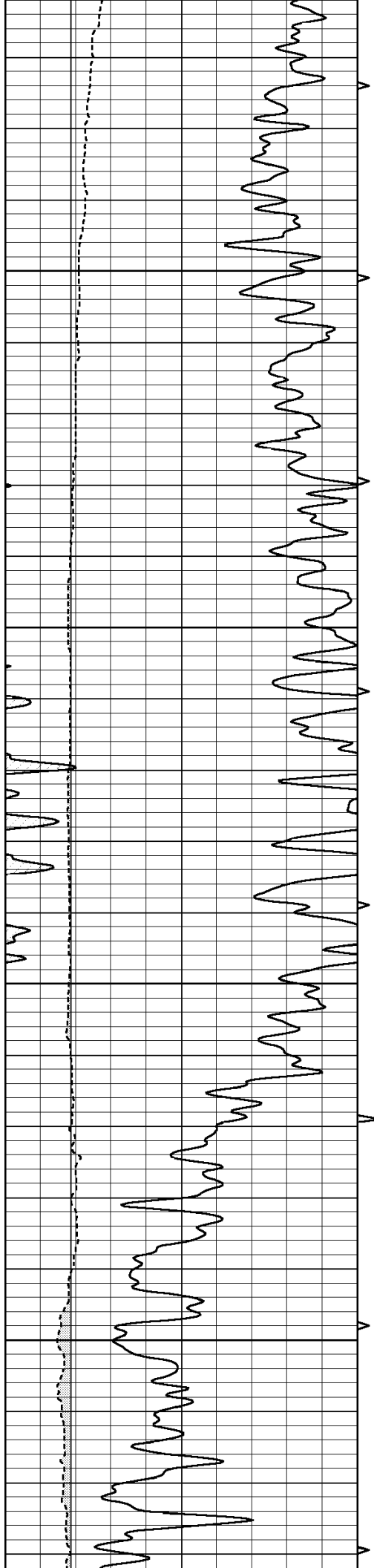
Database File: 004724pe.db
 Dataset Pathname: pass6.7
 Presentation Format: slt
 Dataset Creation: Thu Feb 25 16:46:16 2010
 Charted by: Depth in Feet scaled 1:240

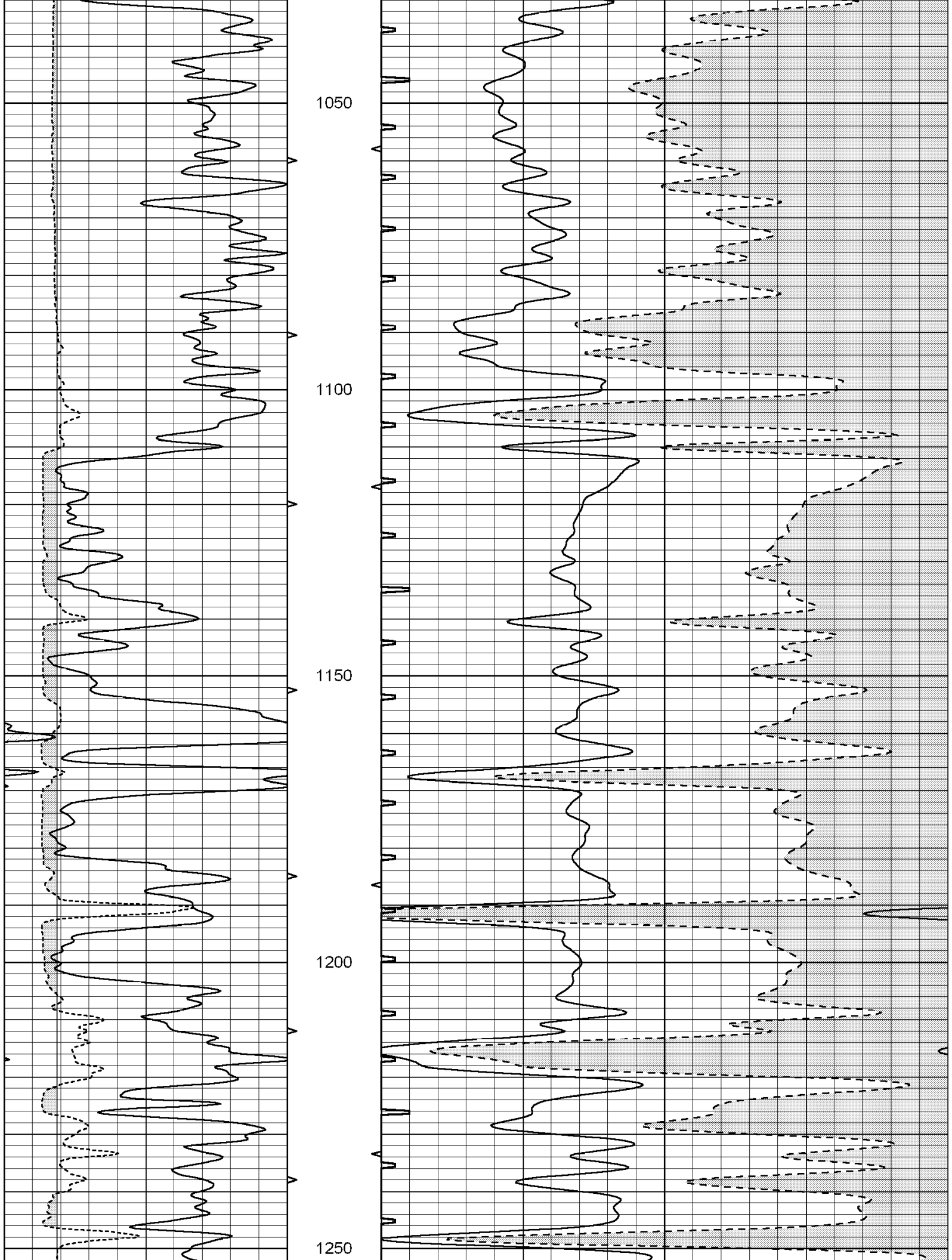
0	GAMMA RAY (GAPI)	150	ABHV	140	DELTA TIME (usec/ft)	40
6	CALIPER (in)	16	10 (ft3) 0	30	SONIC POROSITY (pu)	-10
			TBHV	0	ITT (msec)	20
			0 (ft3) 10			

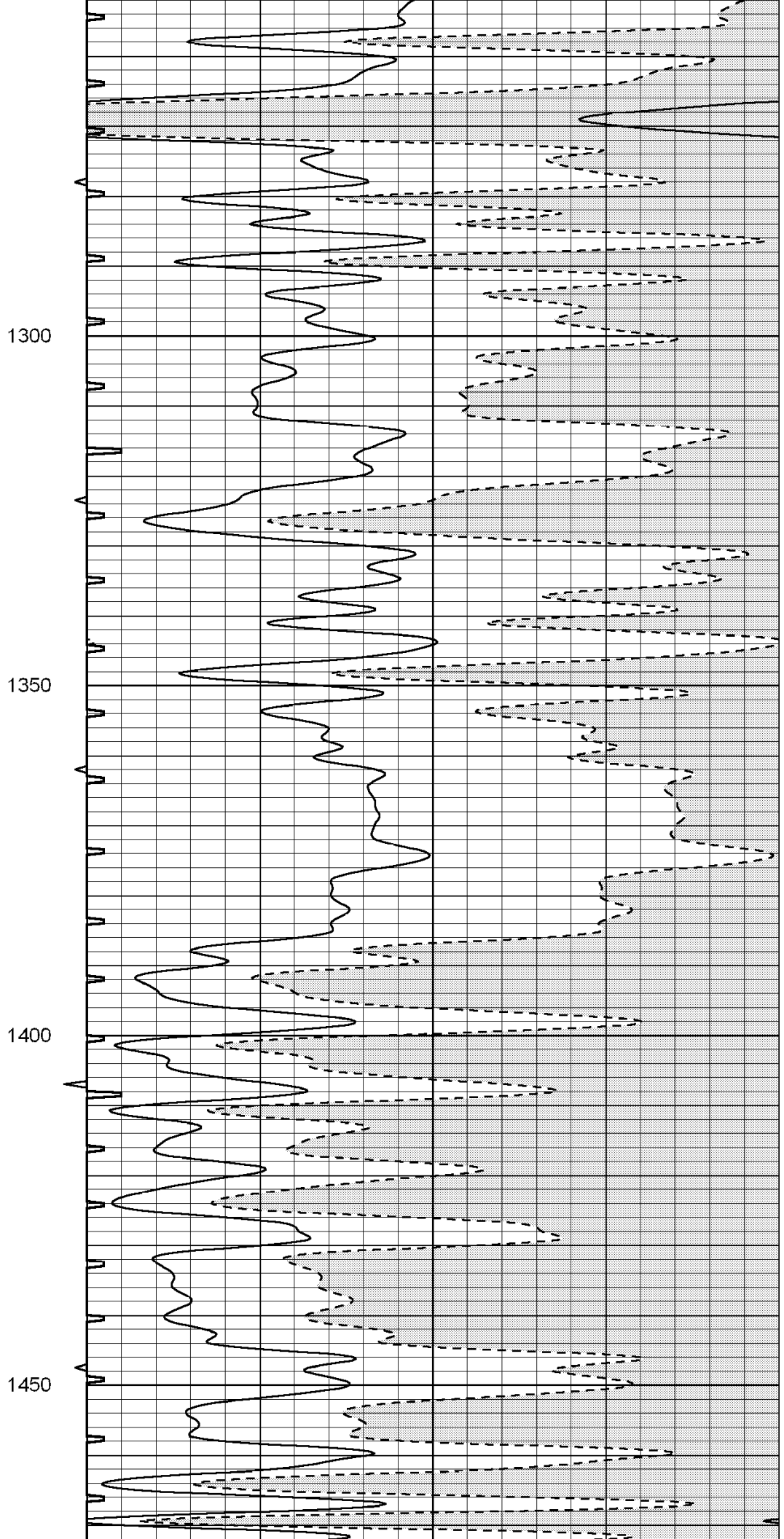
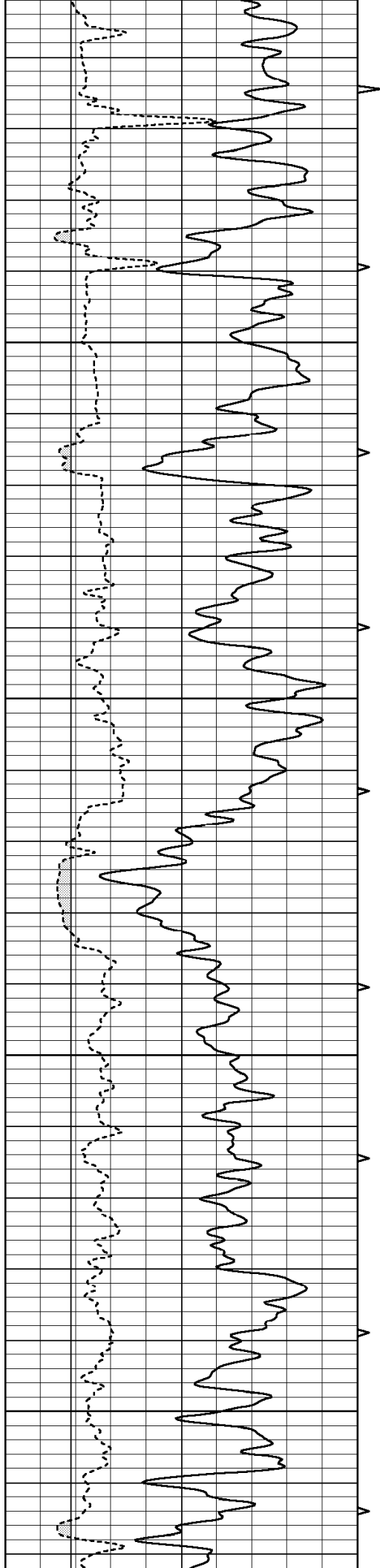


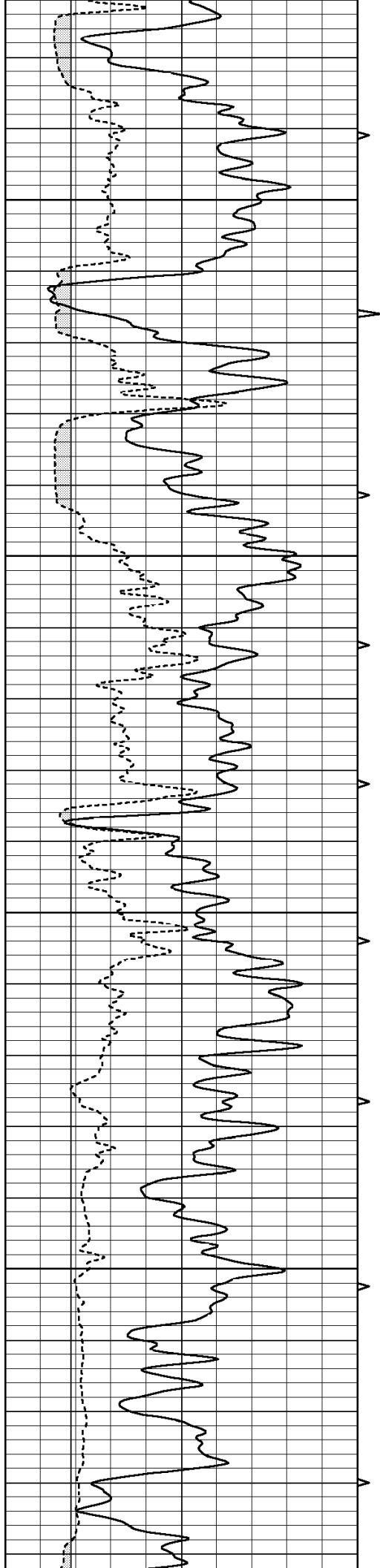










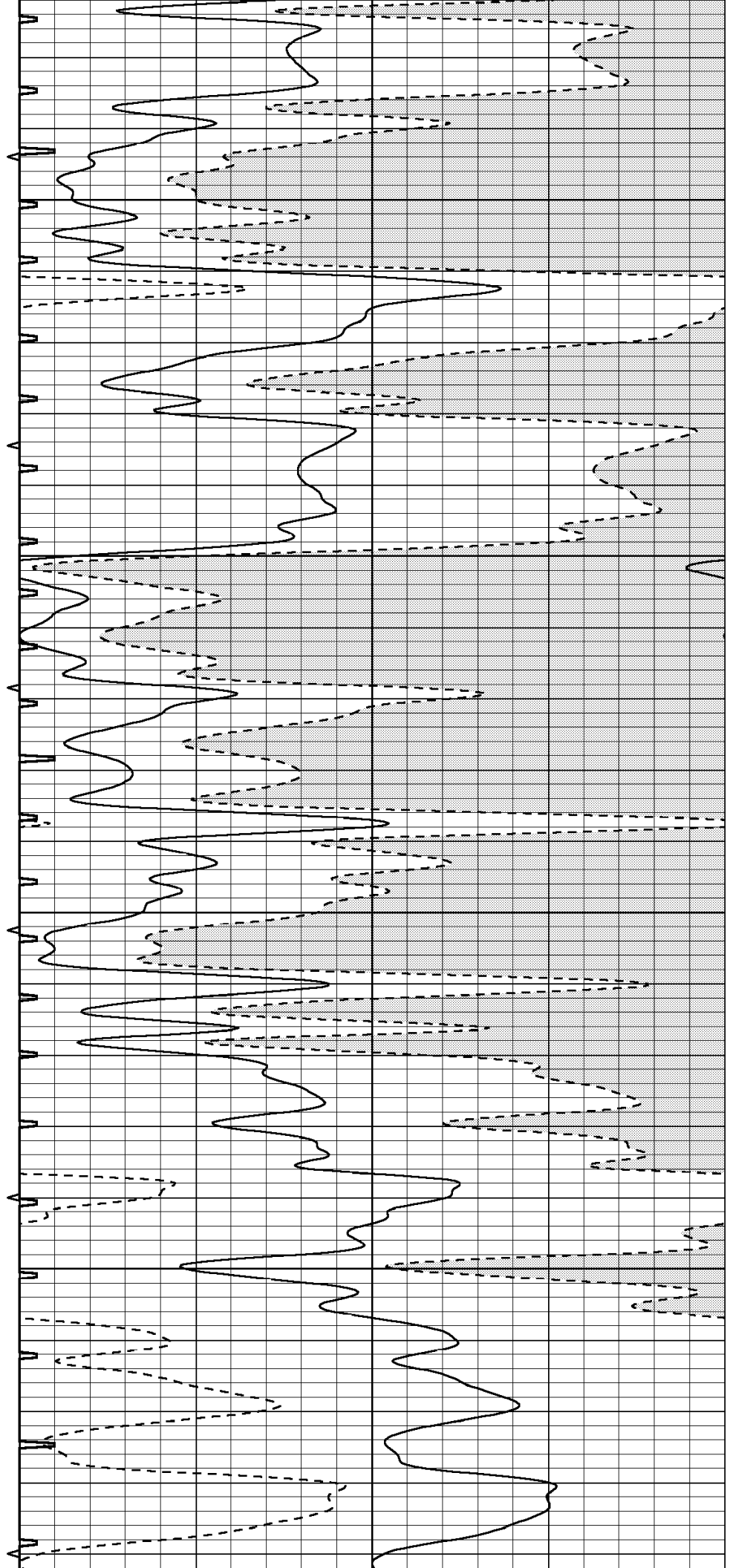


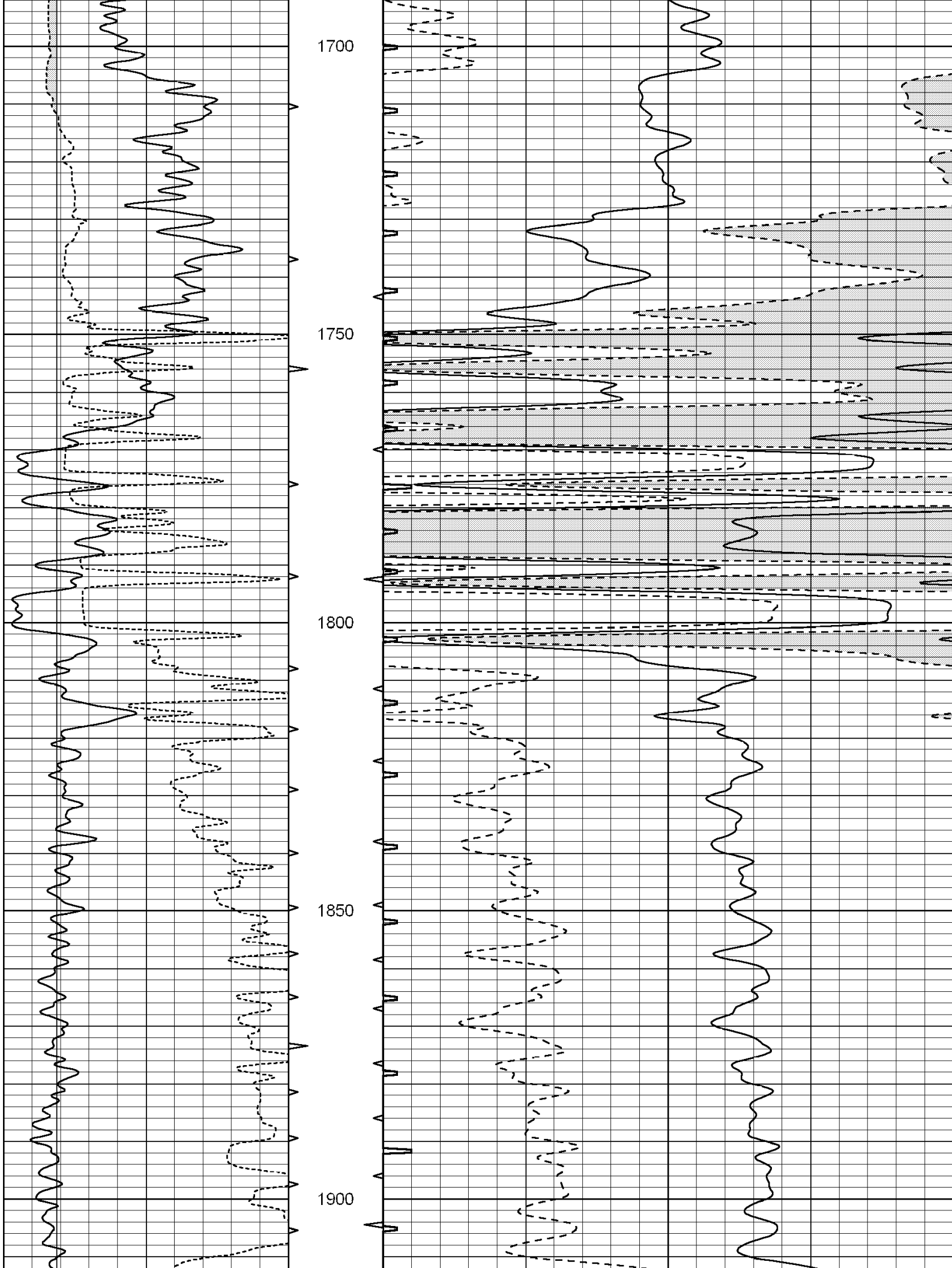
1500

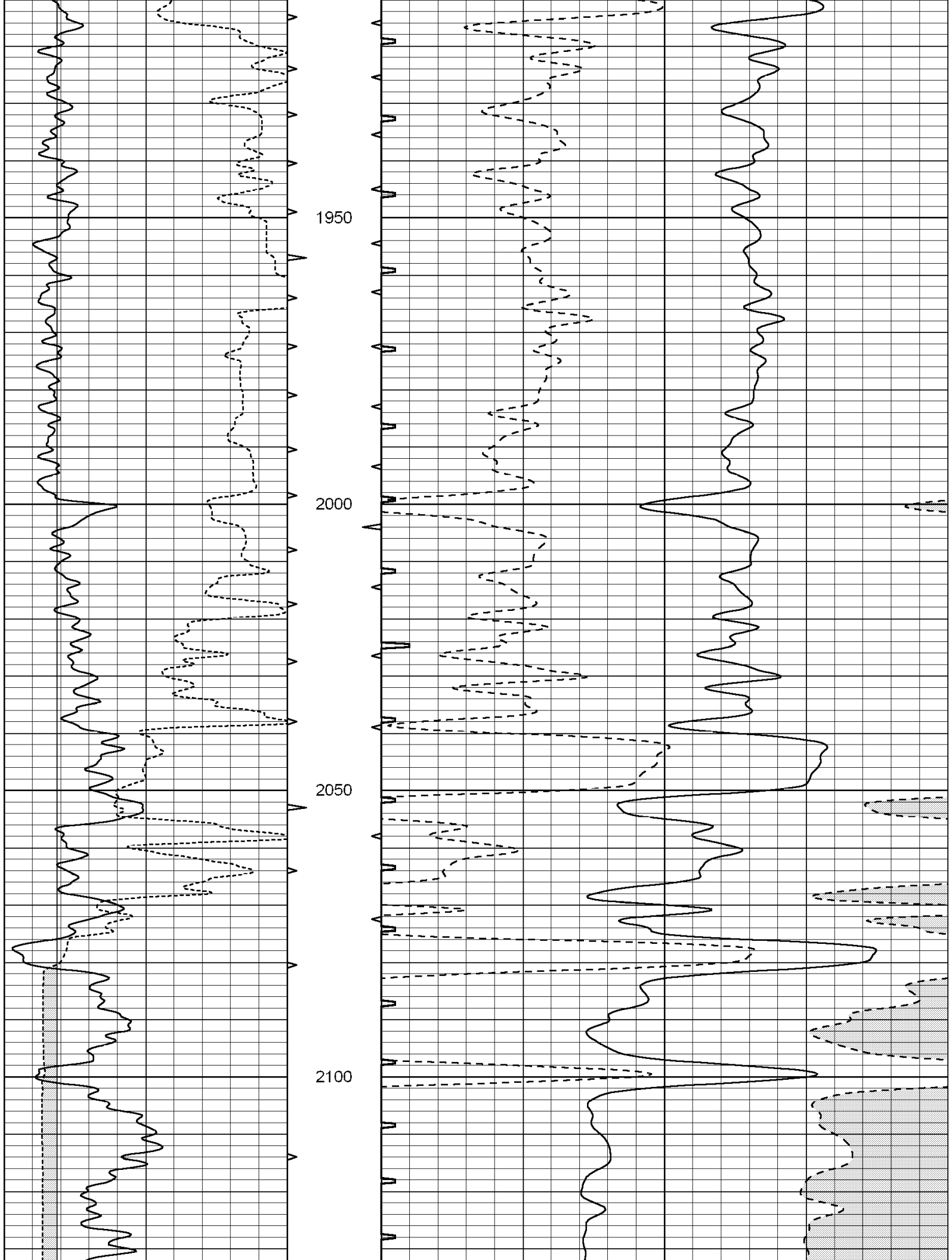
1550

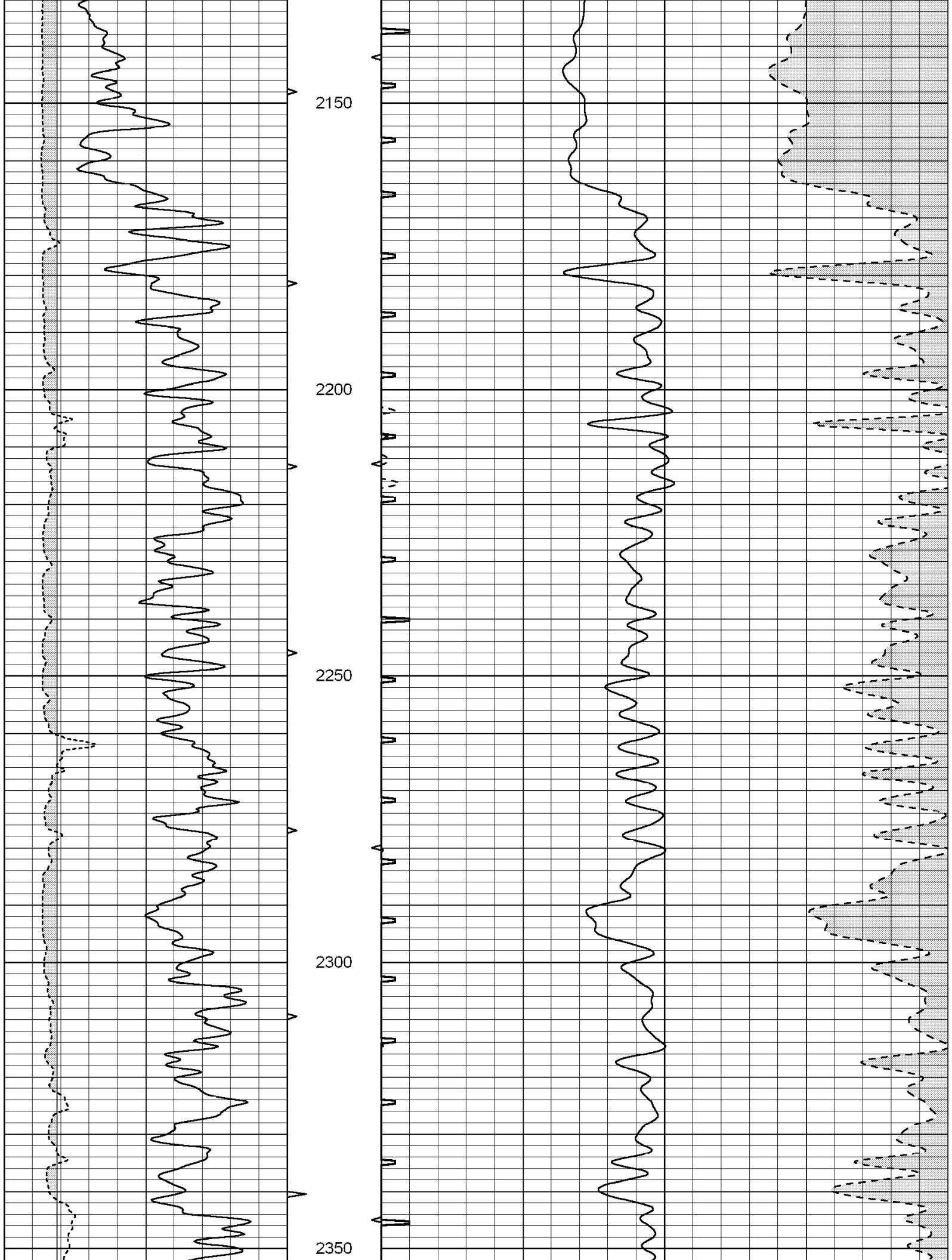
1600

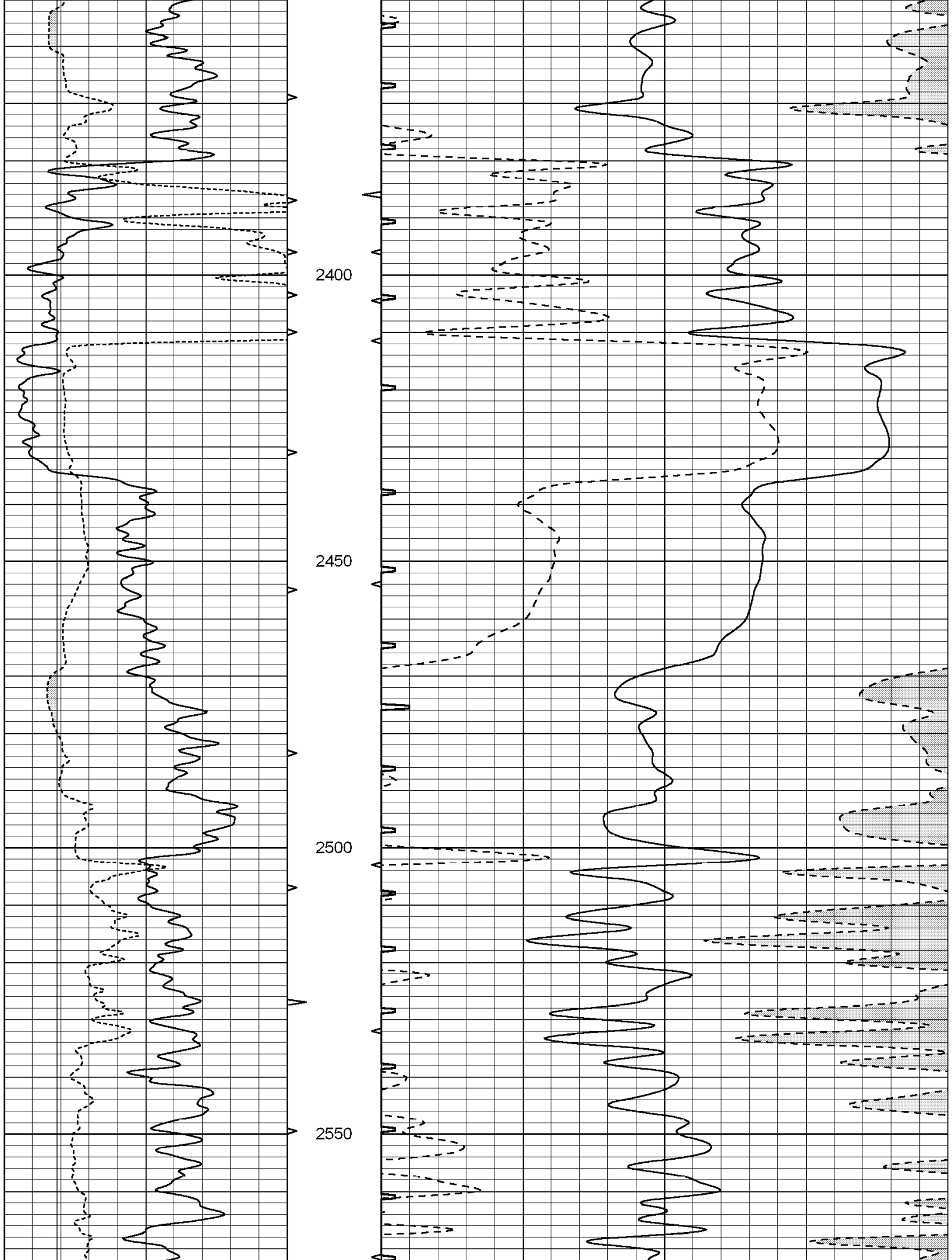
1650

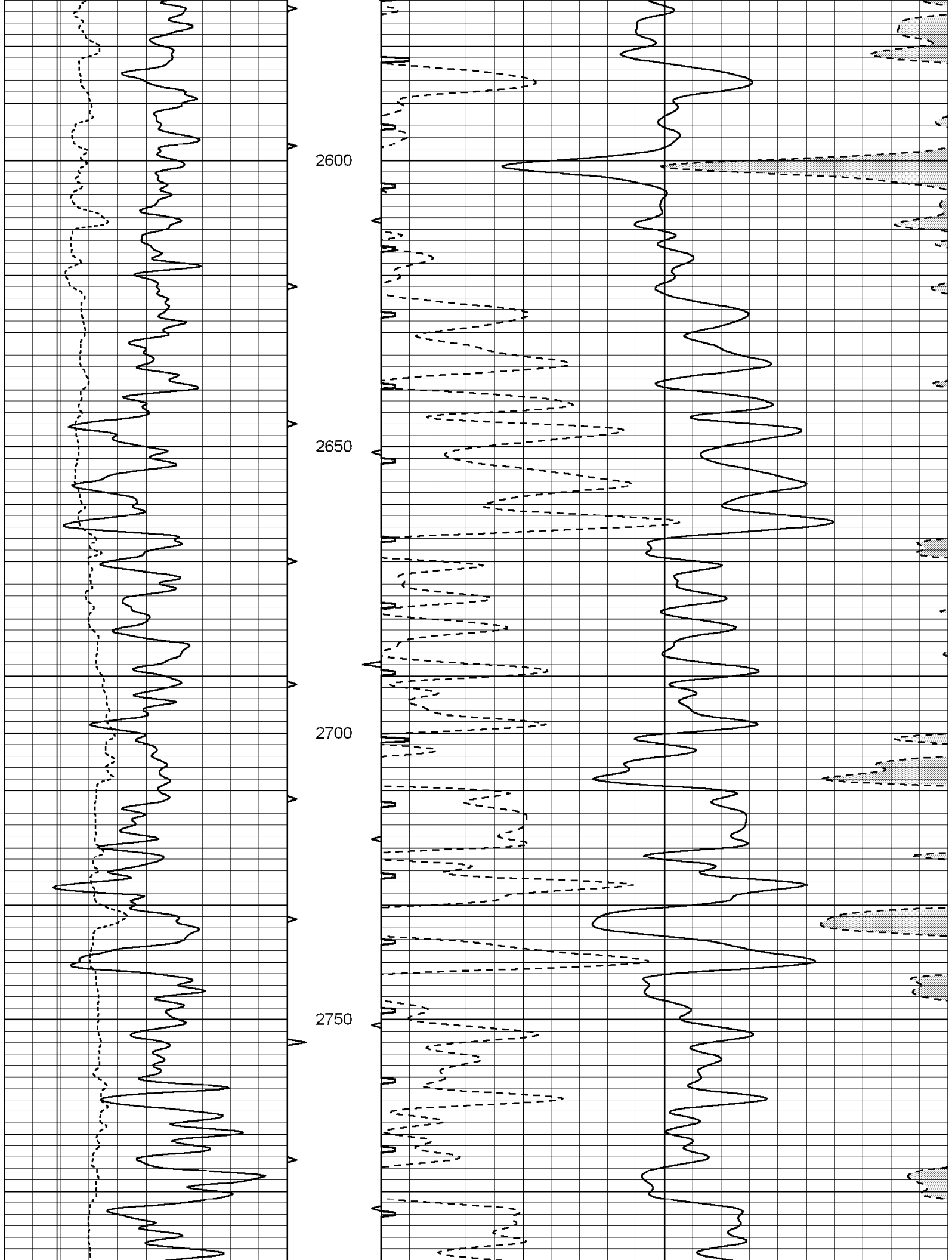


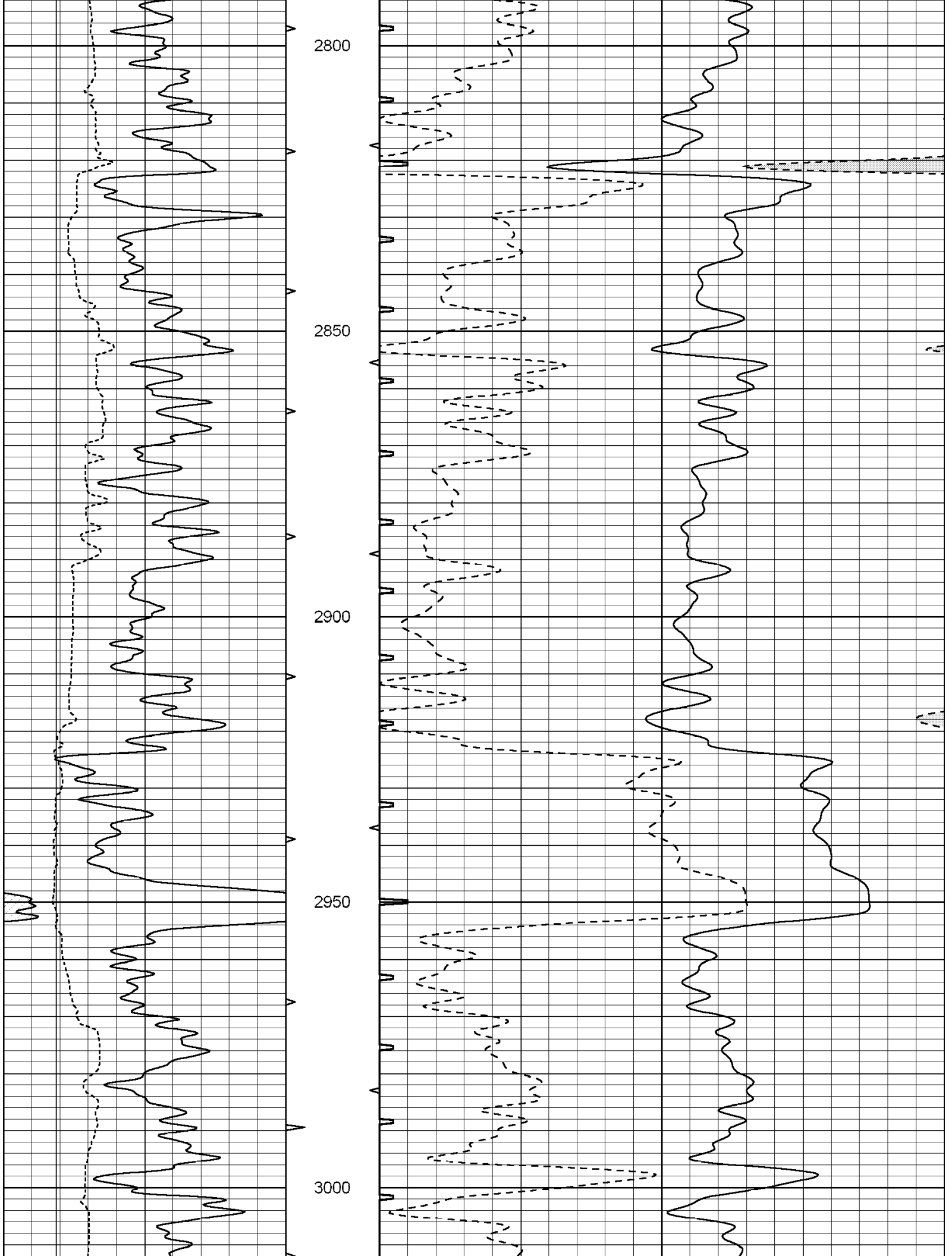


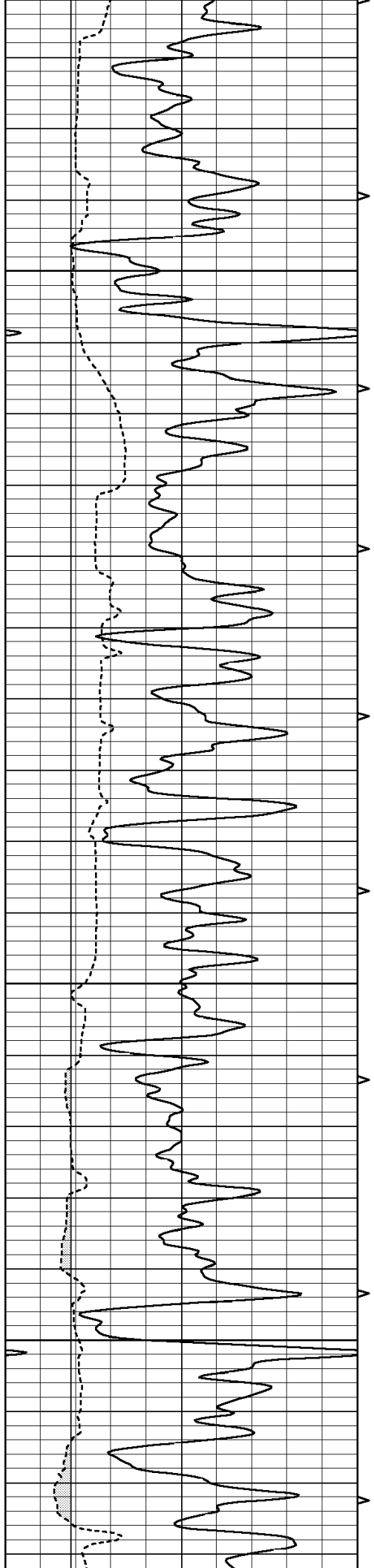










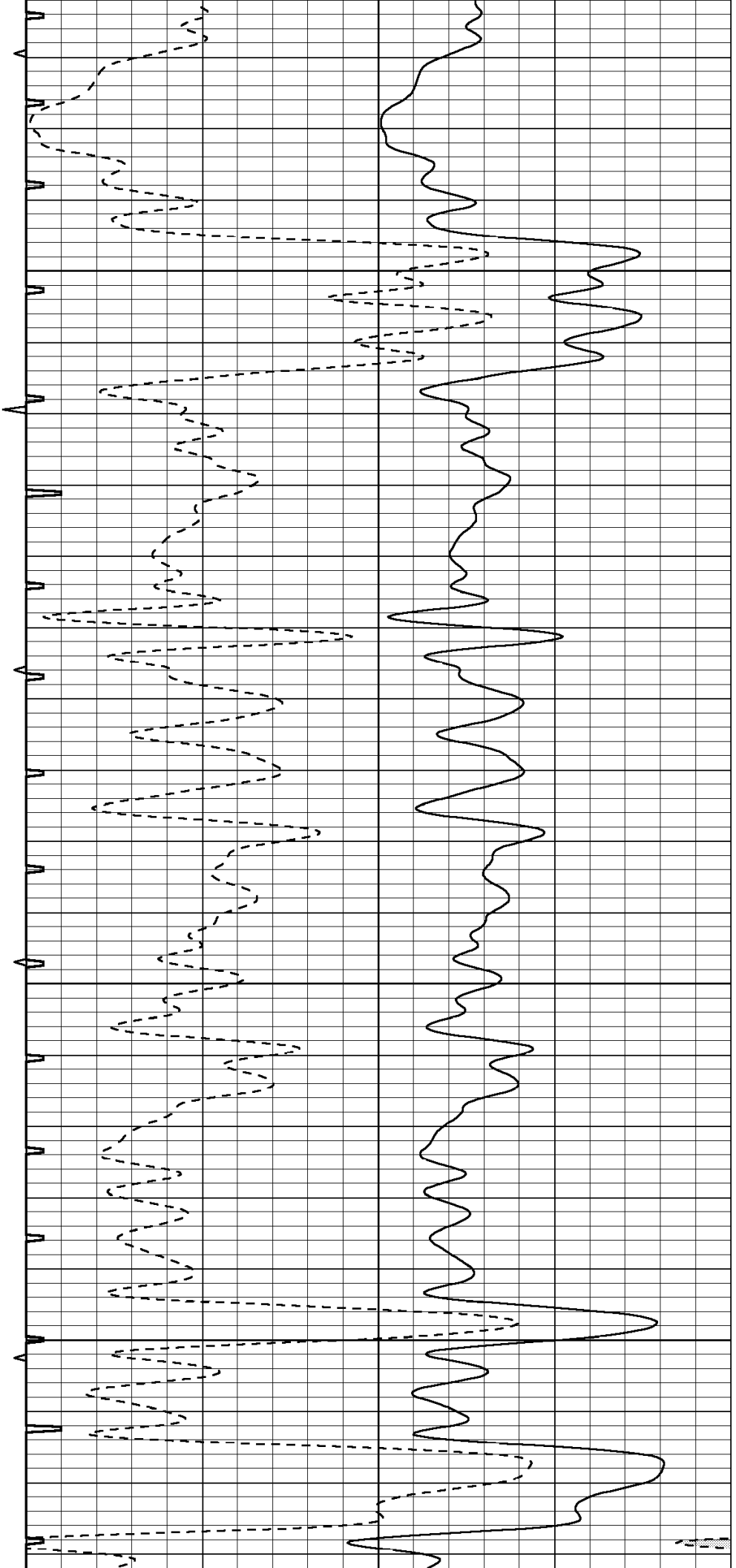


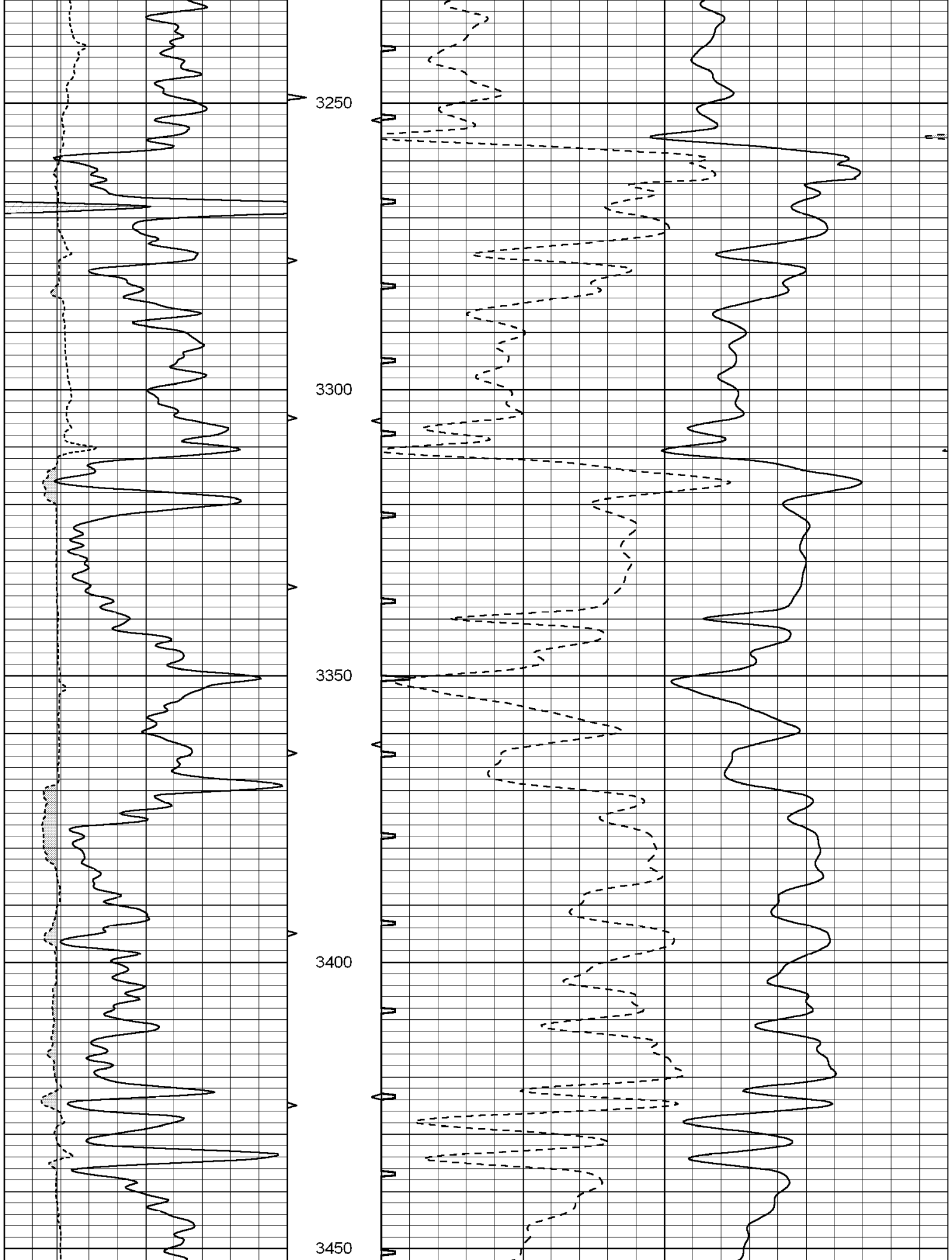
3050

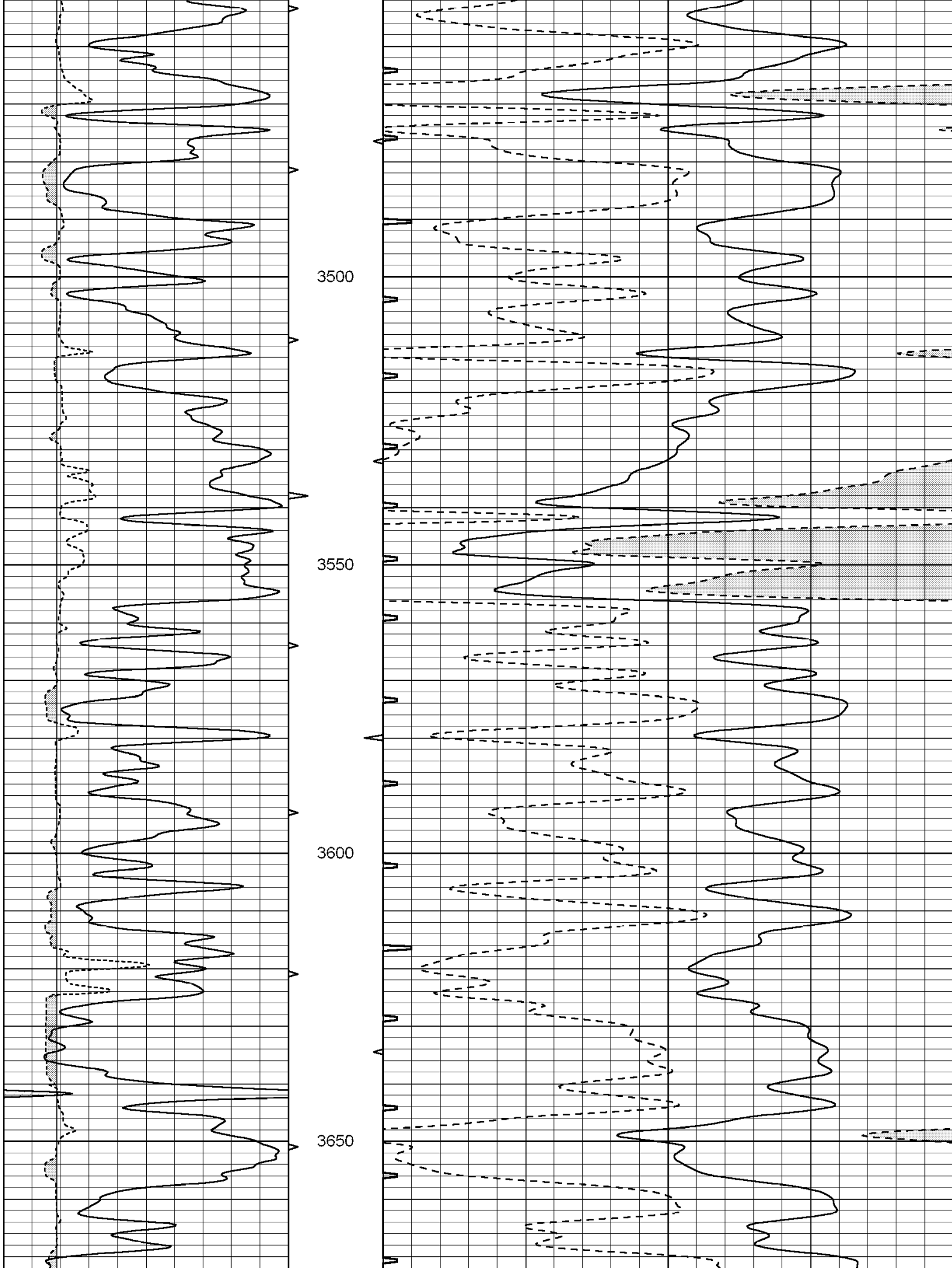
3100

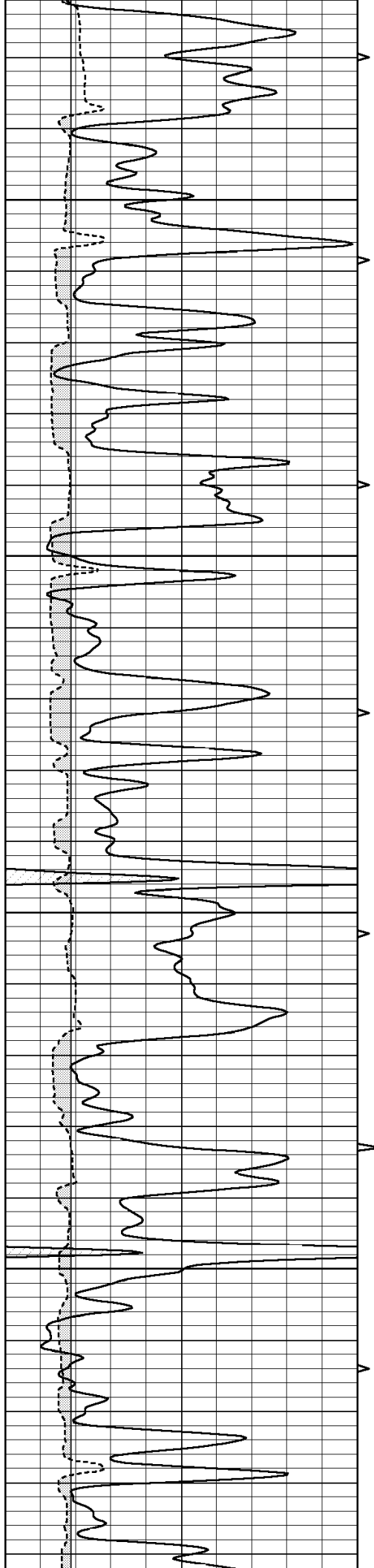
3150

3200







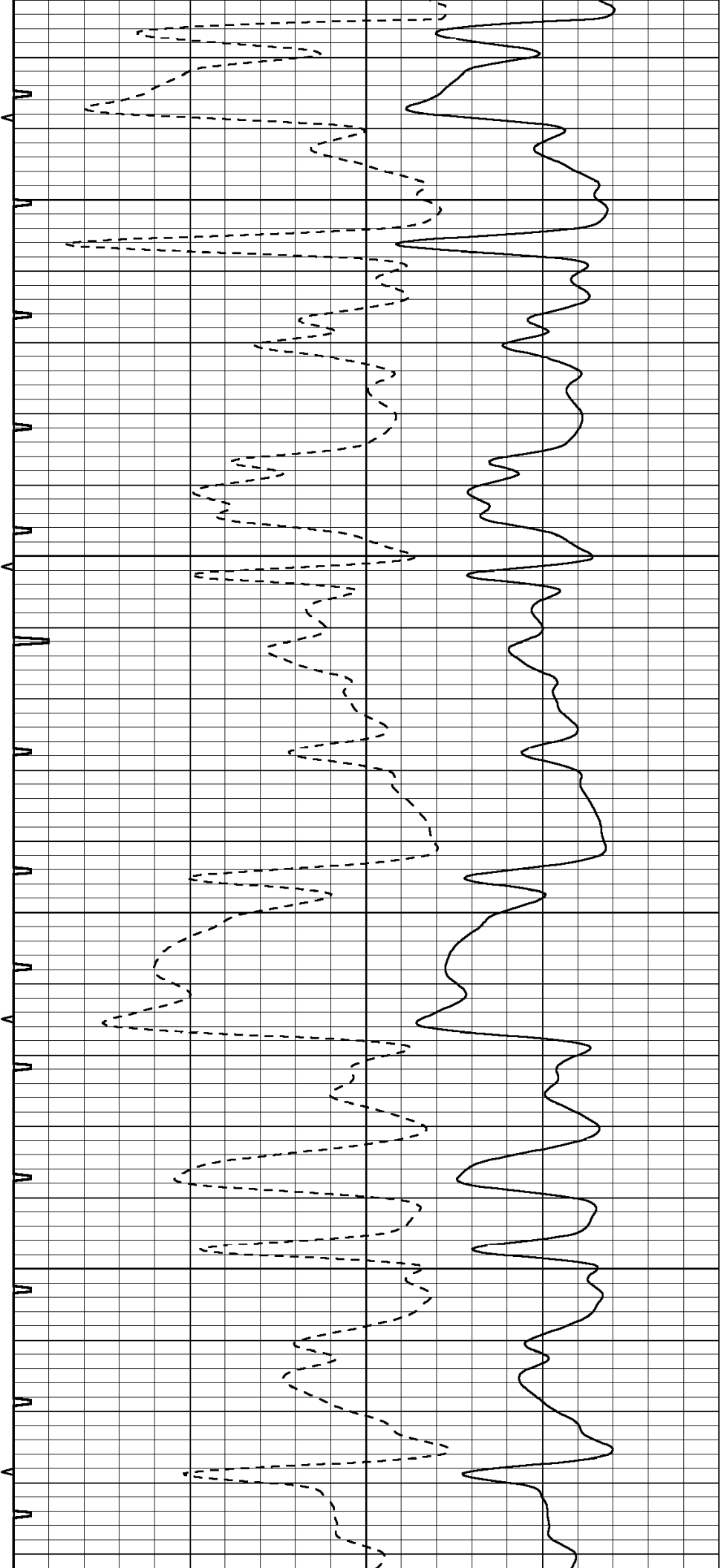


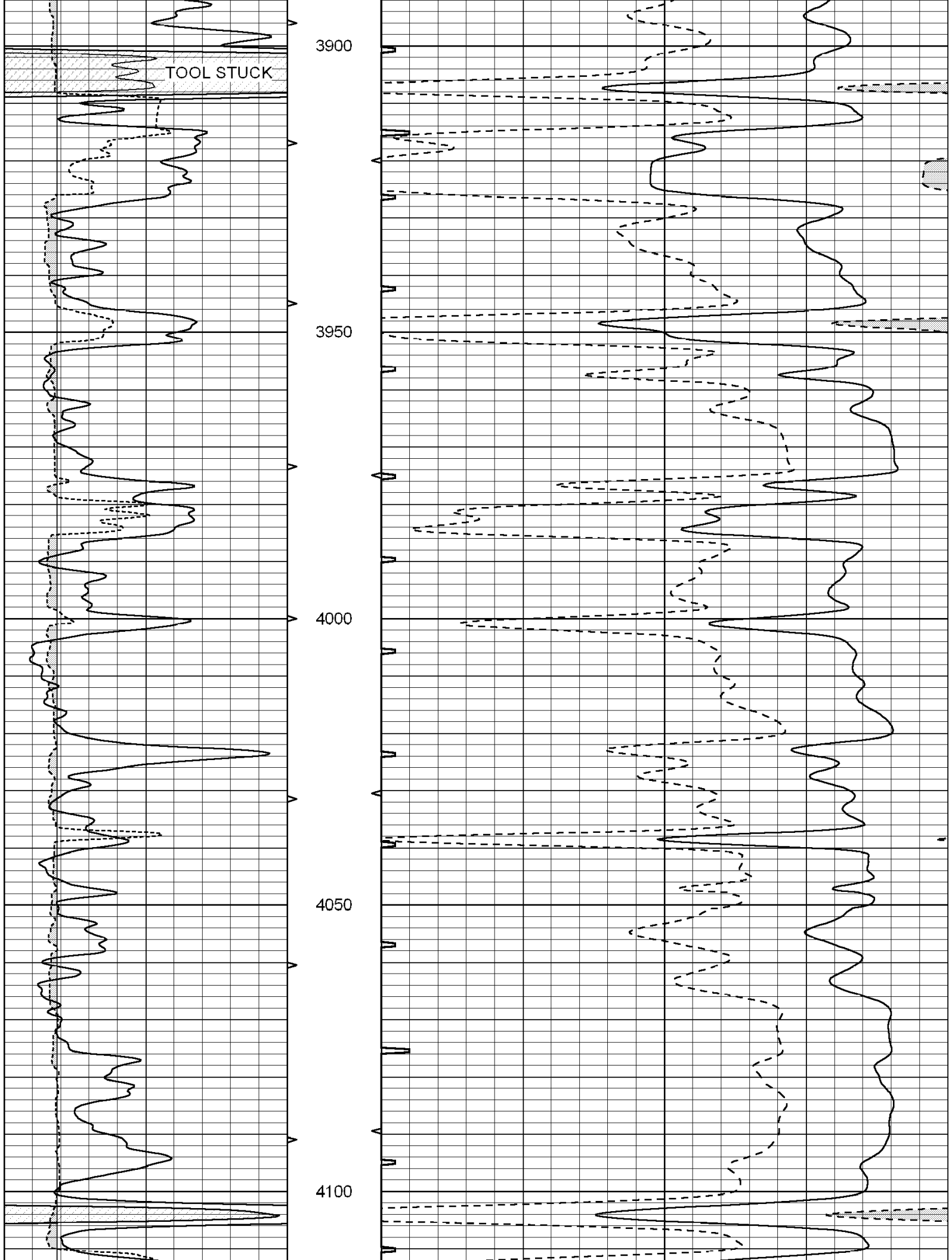
3700

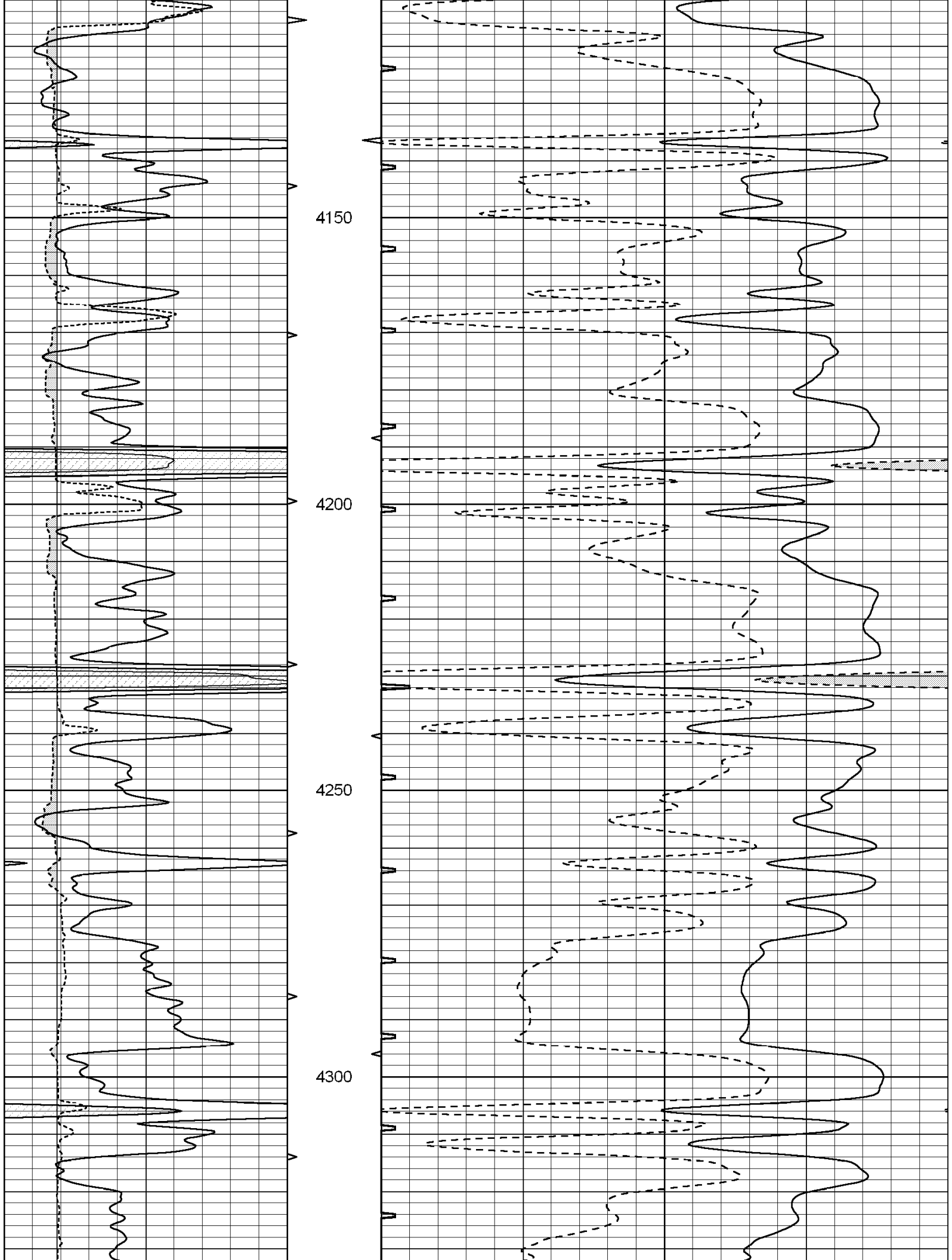
3750

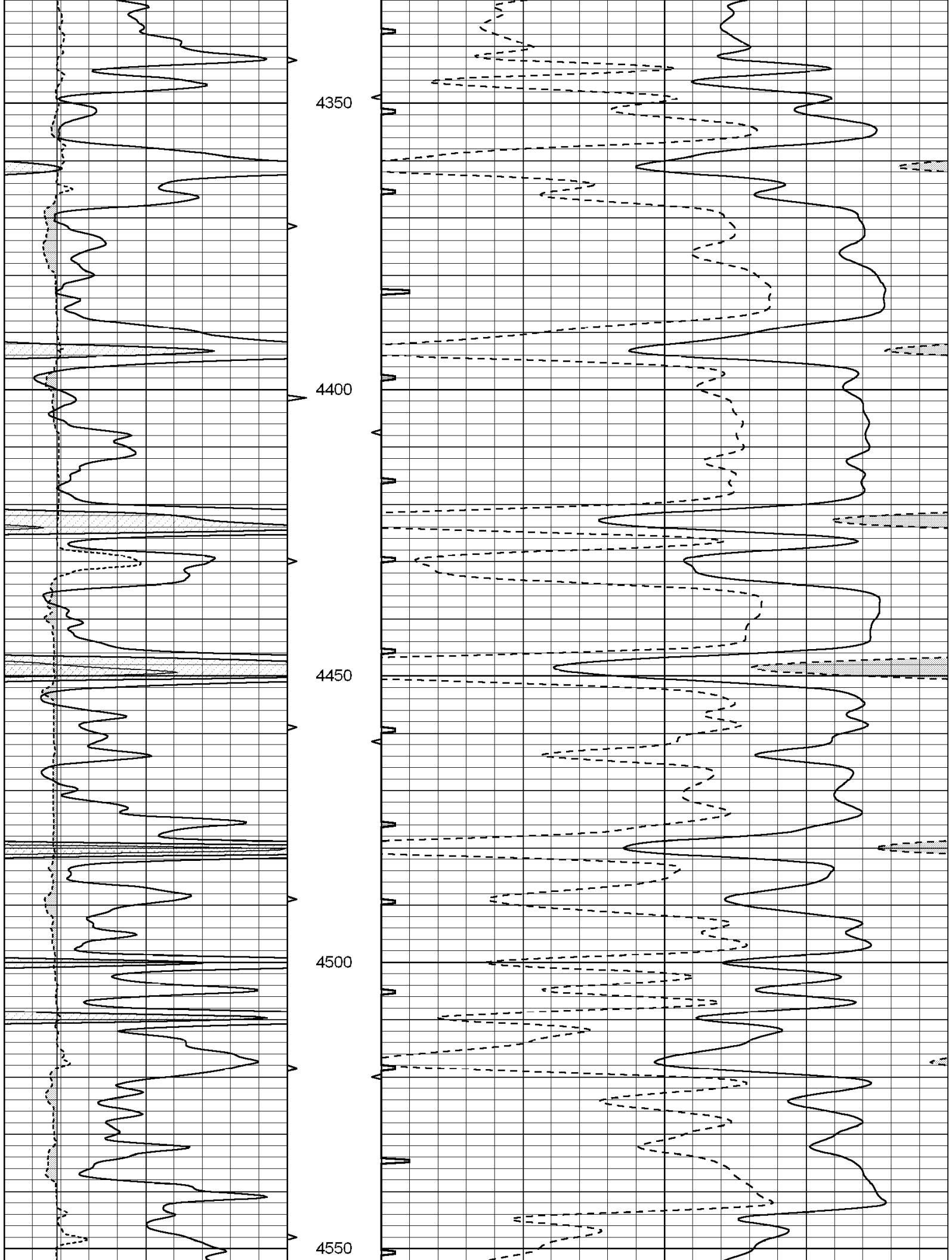
3800

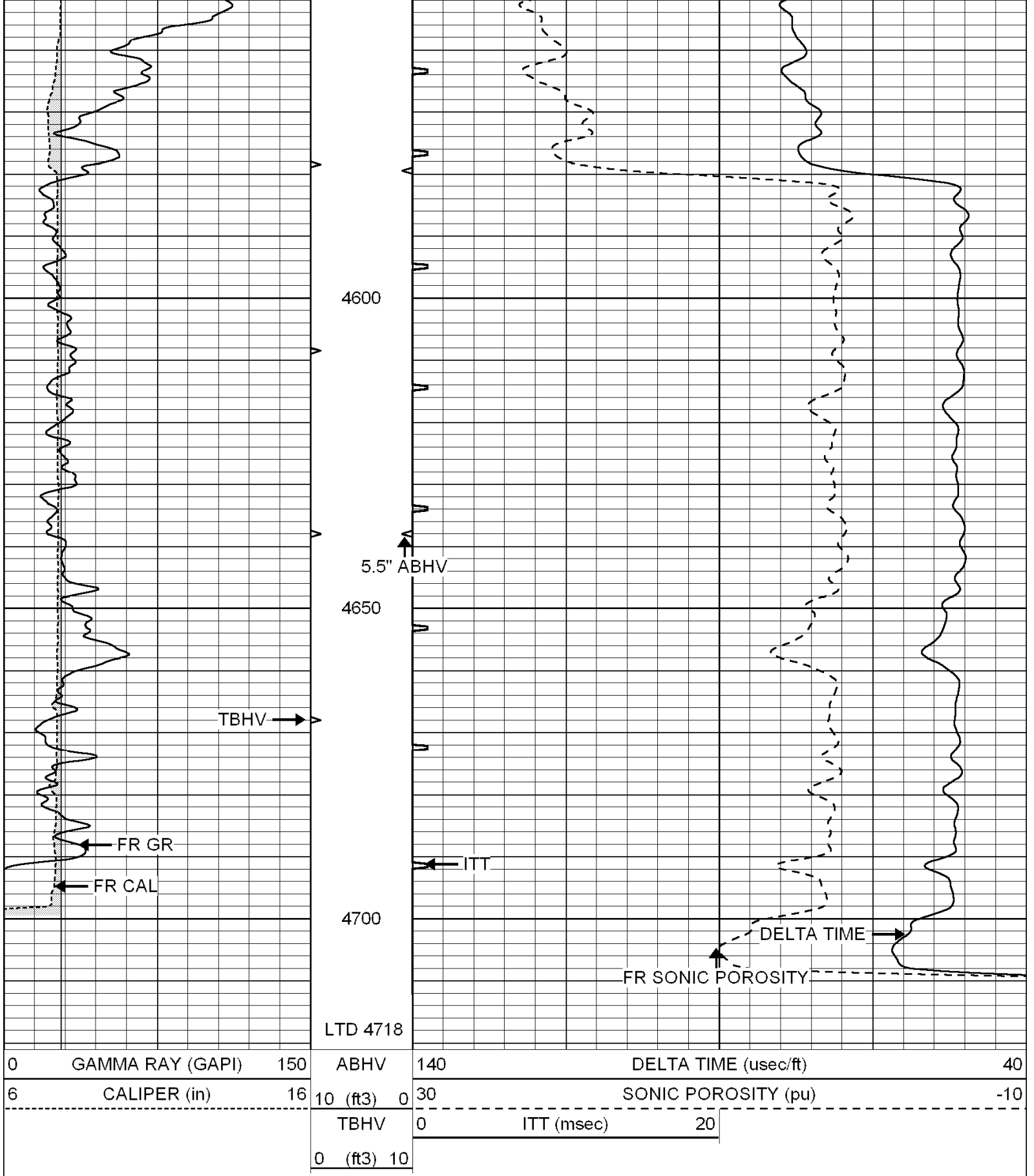
3850











SUPERIOR
Hays,
Kansas

REPEAT SECTION

Dataset Pathname: pass5.4
 Presentation Format: slt
 Dataset Creation: Thu Feb 25 15:23:25 2010 by Calc Open-Cased 060407
 Charted by: Depth in Feet scaled 1:240

0	GAMMA RAY (GAPI)	150	ABHV	140	DELTA TIME (usec/ft)	40	
6	CALIPER (in)	16	10 (ft3)	0	30	SONIC POROSITY (pu)	-10
			0	ITT (msec)	20		
			0 (ft3)	10			

