



SUPERIOR
Hays,
Kansas

MICRO
LOG

Company LARIO OIL & GAS COMPANY
Well KNAPP #1-31
Field WILDCAT
County GOVE
State KANSAS

Company LARIO OIL & GAS COMPANY
Well KNAPP #1-31
Field WILDCAT
County GOVE State KANSAS

Location: API #: 15-063-21823-0000
1061' FNL & 1668' FWL
SEC 31 TWP 13S RGE 31W
Permanent Datum GROUND LEVEL Elevation 2932
Log Measured From KELLY BUSHING 5' A.G.L.
Drilling Measured From KELLY BUSHING
Other Services
CDL/CNL/PE
DIL/SONIC
Elevation
K.B. 2937
D.F. 2935
G.L. 2932

Date	2/25/10
Run Number	TWO
Depth Driller	4717
Depth Logger	4718
Bottom Logged Interval	4695
Top Log Interval	3400
Casing Driller	8 5/8"@263'
Casing Logger	263
Bit Size	7 7/8"
Type Fluid In Hole	CHEMICAL MUD
Density / Viscosity	9.0/52
pH / Fluid Loss	10.0/8.8
Source of Sample	FLOWLINE
Rm @ Meas. Temp	.500@80F
Rmf @ Meas. Temp	.375@80F
Rmc @ Meas. Temp	.600@80F
Source of Rmf / Rmc	MEASUREMENT
Rm @ BHT	.325@123F
Time Circulation Stopped	5 HOURS
Time Logger on Bottom	12:15 P.M.
Maximum Recorded Temperature	123F
Equipment Number	0836
Location	HAYS, KANSAS
Recorded By	JEFF LUEBBERS
Witnessed By	VERN SCHRAG

<<< Fold Here >>>

All interpretations are opinions based on inferences from electrical or other measurements and we cannot and do not guarantee the accuracy or correctness of any interpretation, and we shall not, except in the case of gross or willful negligence on our part, be liable or responsible for any loss, costs, damages, or expenses incurred or sustained by anyone resulting from any interpretation made by any of our officers, agents or employees. These interpretations are also subject to our general terms and conditions set out in our current Price Schedule.

Comments

THANK YOU FOR USING SUPERIOR WELL SERVICE HAYS, KANSAS (785) 628-6395
DIRECTIONS
OAKLEY, KS. (JUNCTION OF OLD 40 & HWY 83) 20S. ON HWY 83 TO "JAYHAWK RD."(MONUMENT ROCK SIGN) 2E. TO "RD. 10", 4N., E. INTO

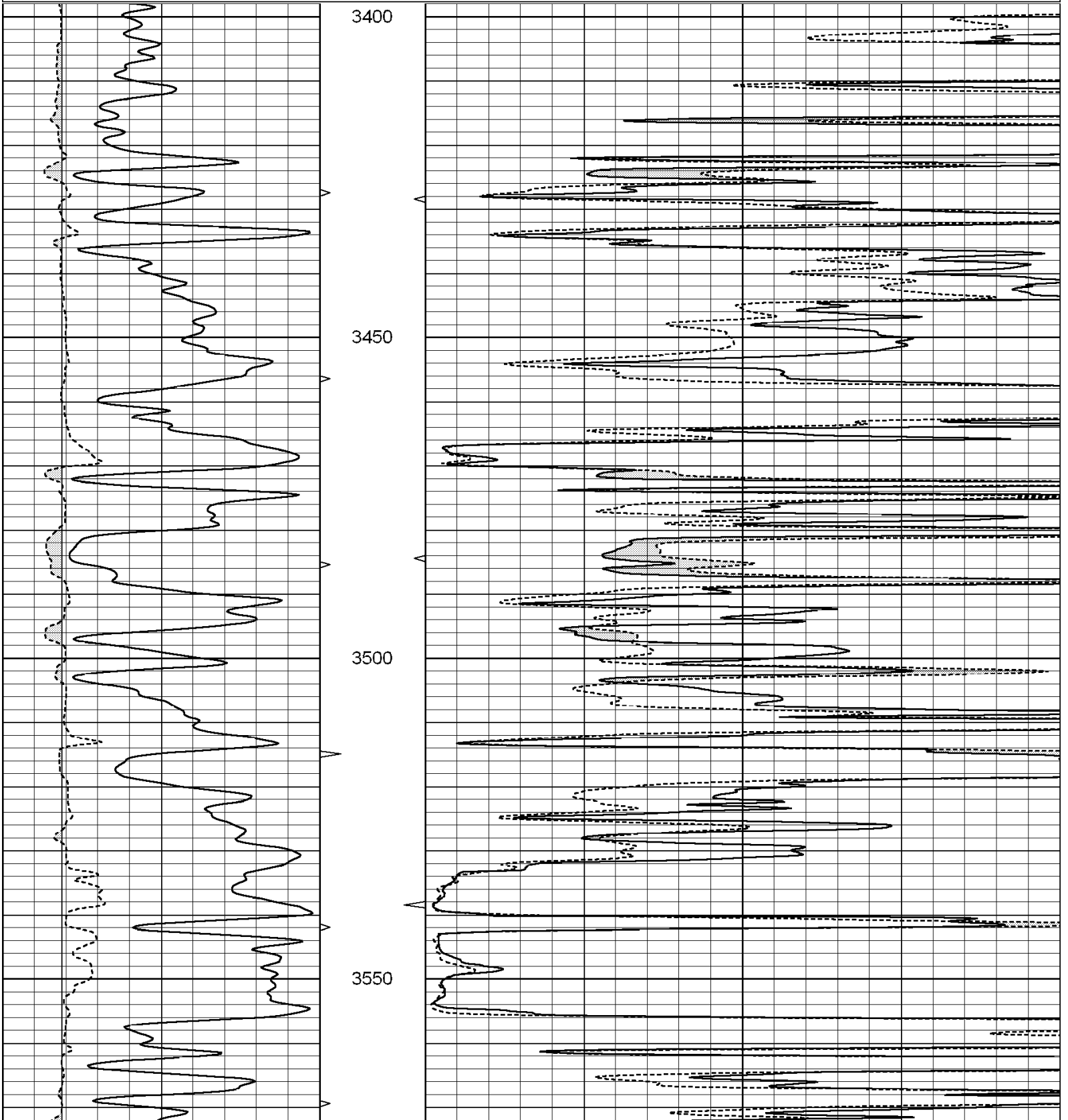


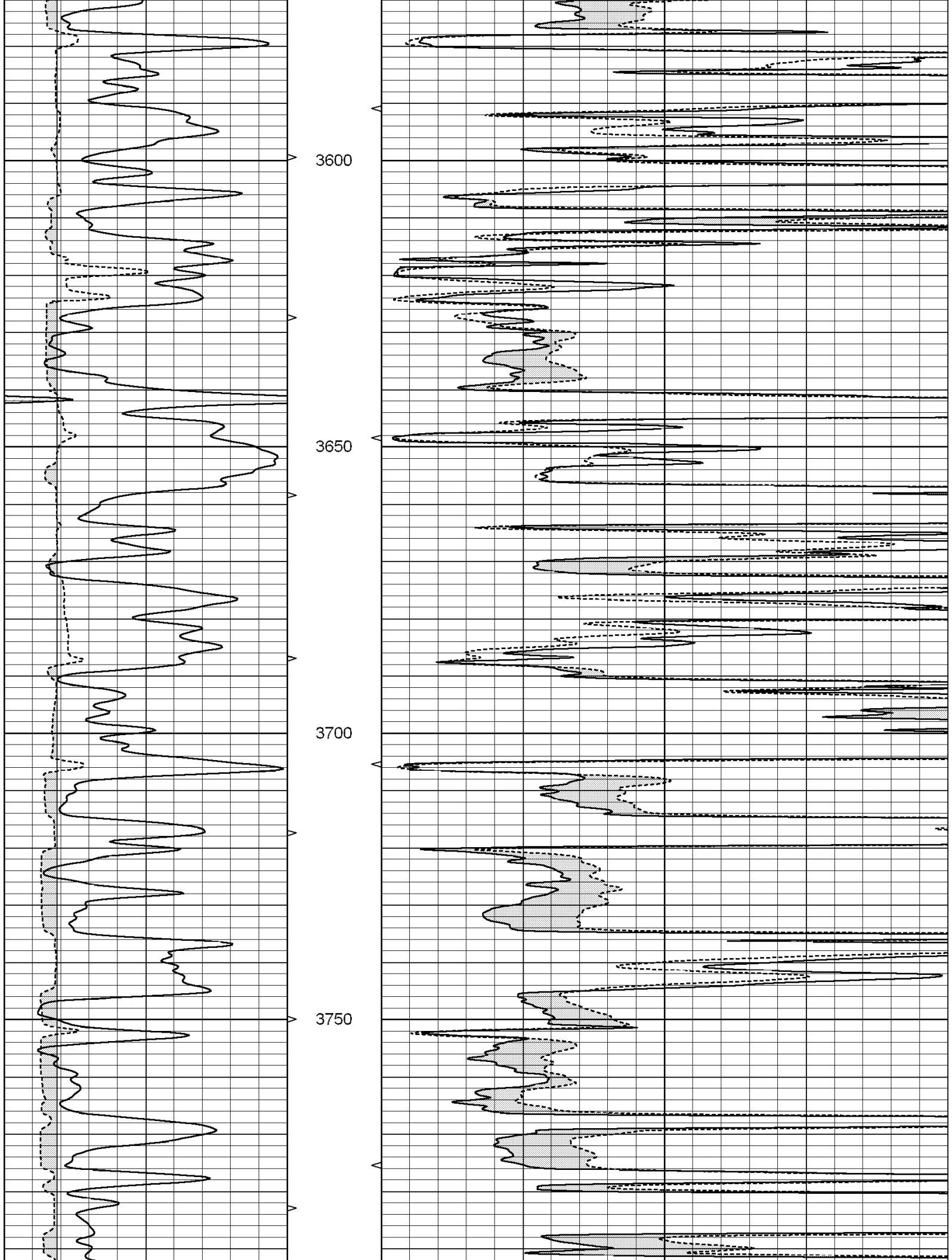
SUPERIOR
Hays,
Kansas

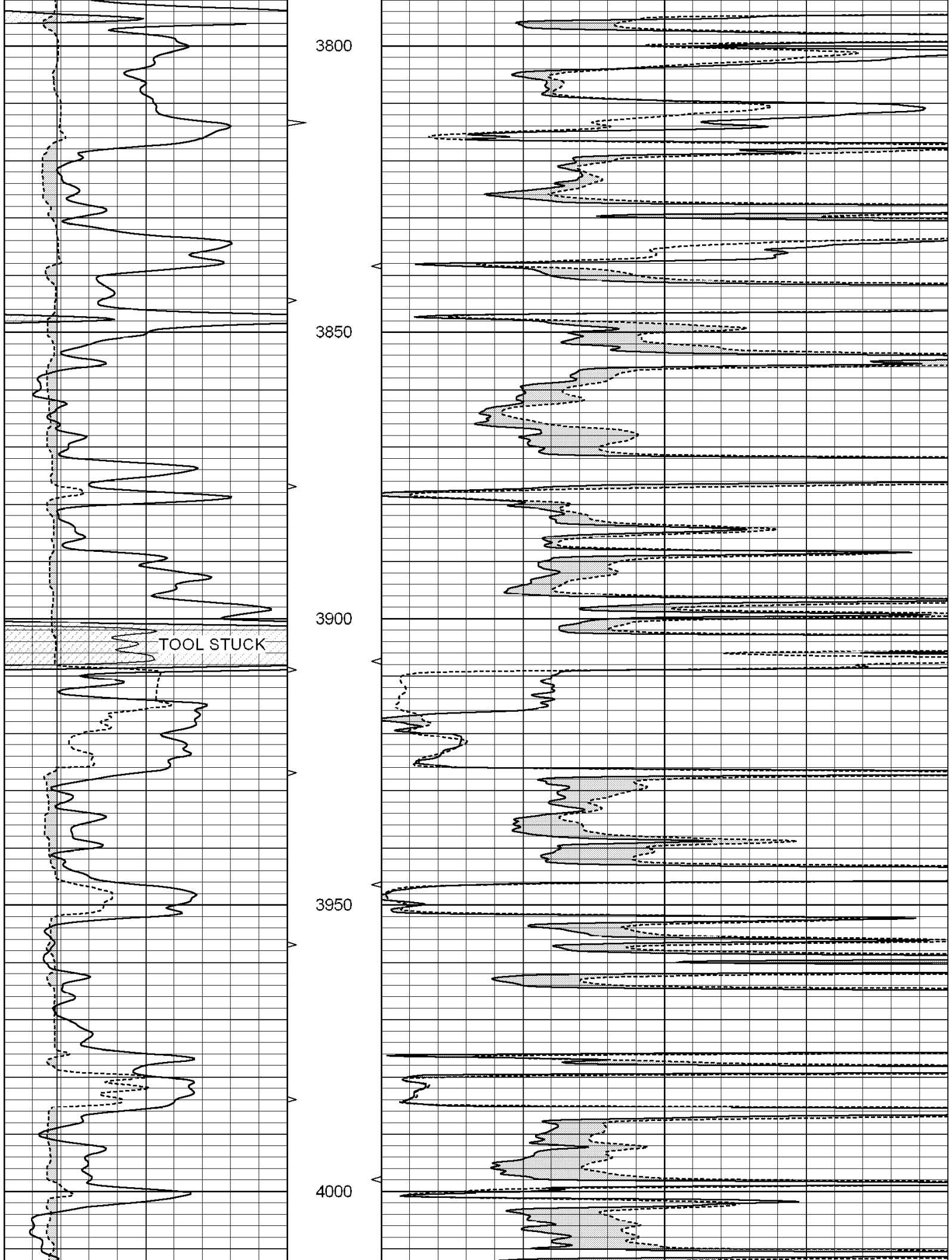
MAIN SECTION

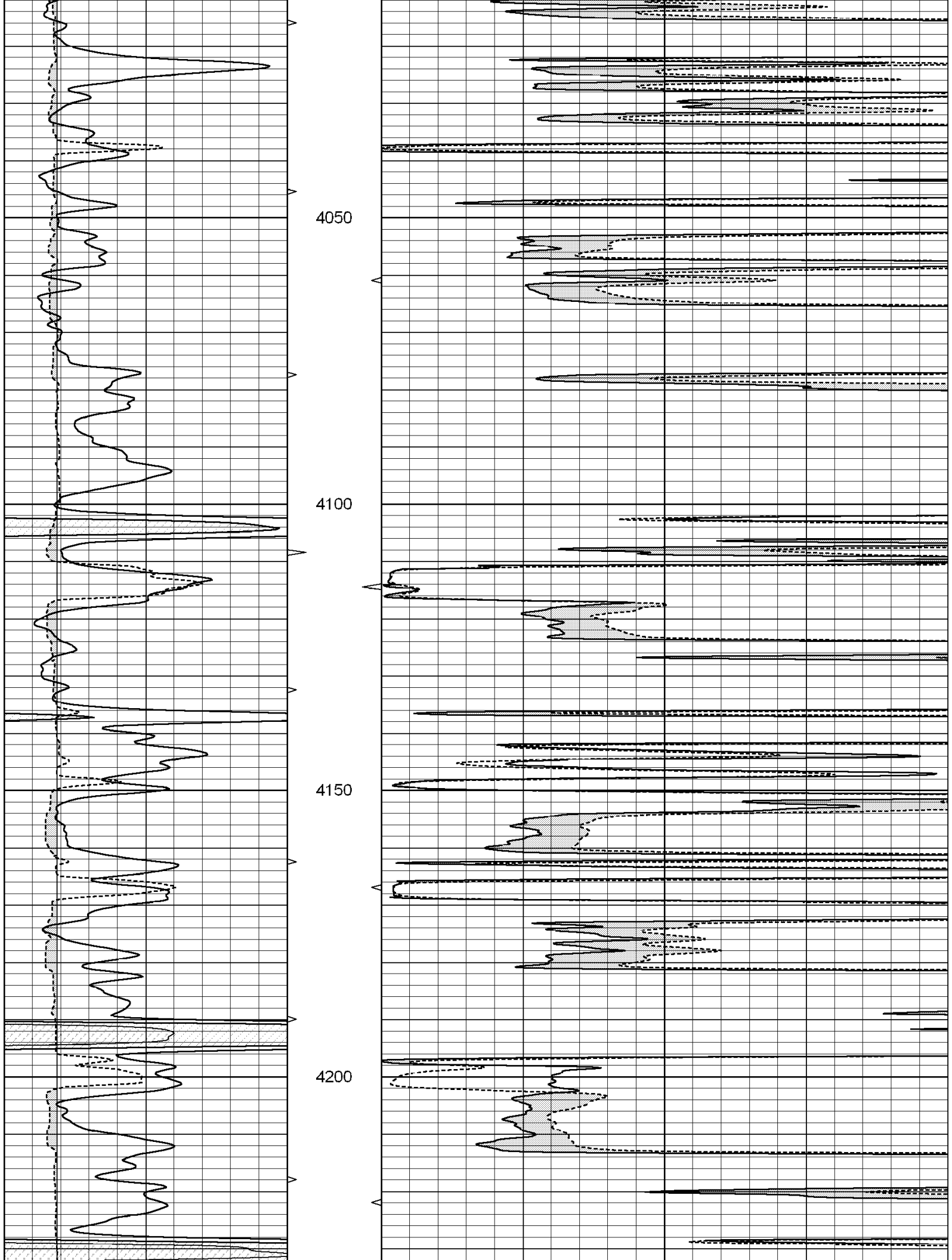
Database File: 004724pe.db
 Dataset Pathname: pass6.5
 Presentation Format: micro
 Dataset Creation: Thu Feb 25 16:18:53 2010
 Charted by: Depth in Feet scaled 1:240

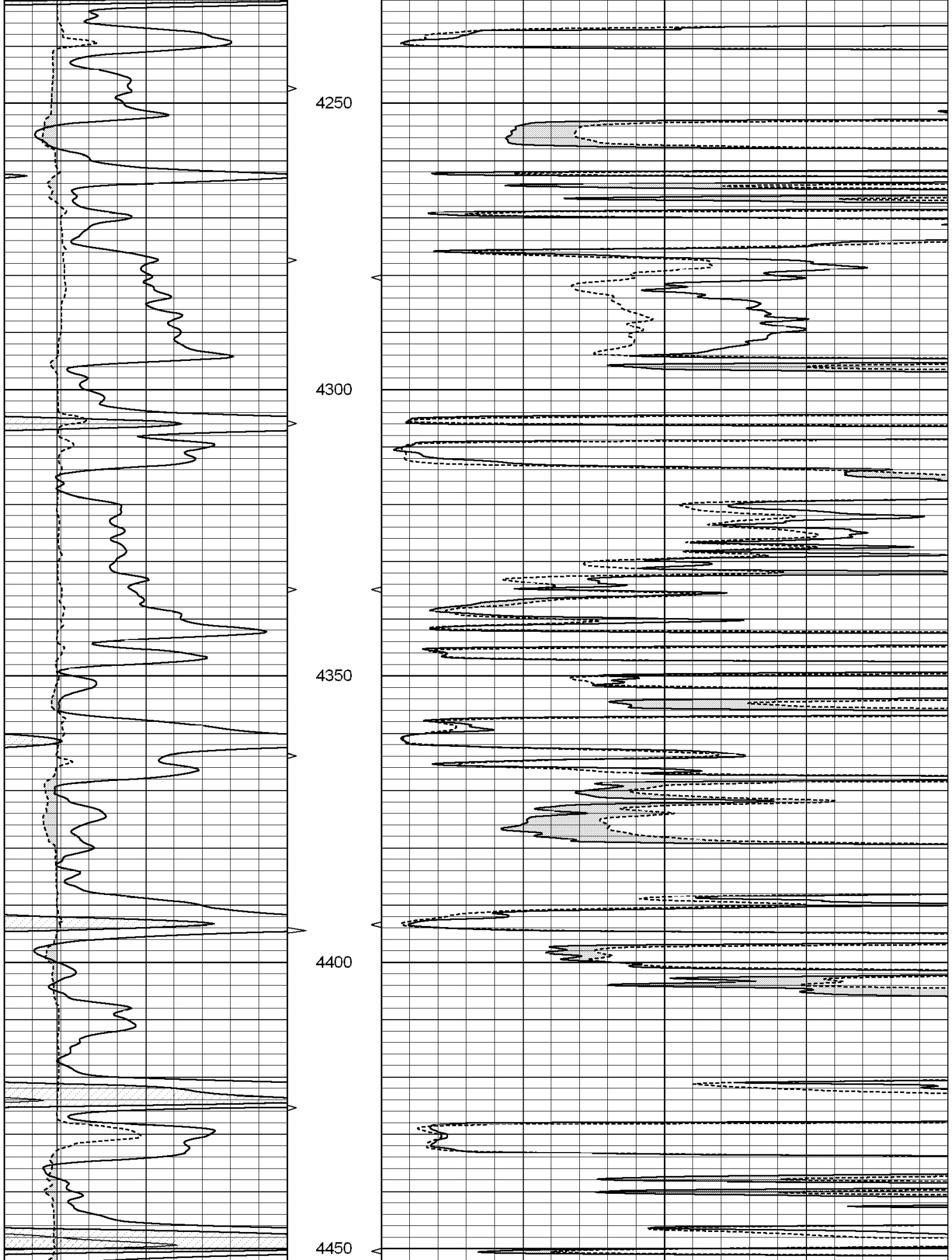
0	GAMMA RAY (GAPI)	150	ABHV	0	MEL1.5 (Ohm-m)	20
6	CALIPER (in)	16	10 (ft3) 0	0	MEL2.0 (Ohm-m)	20
			TBHV			
			0 (ft3) 10			

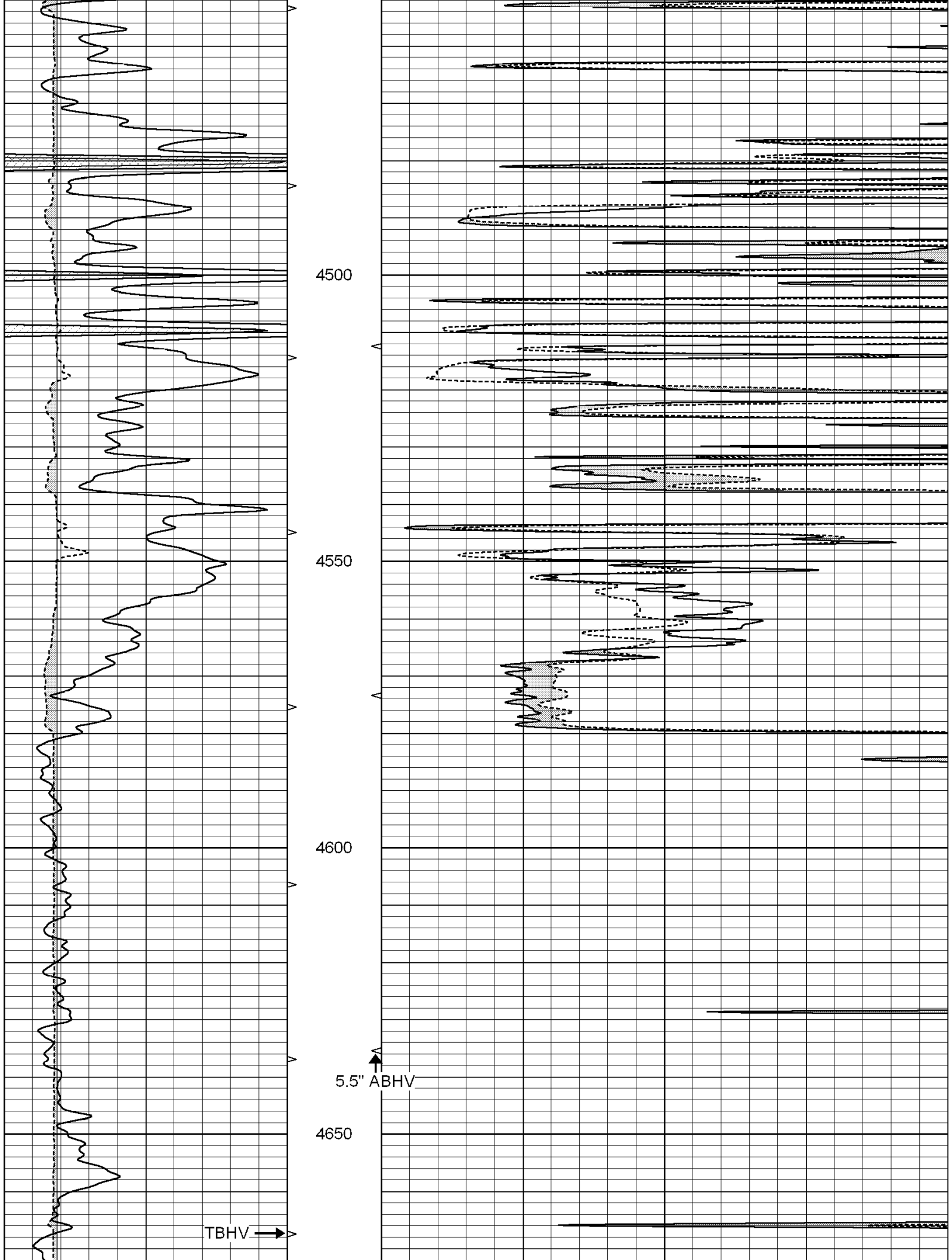


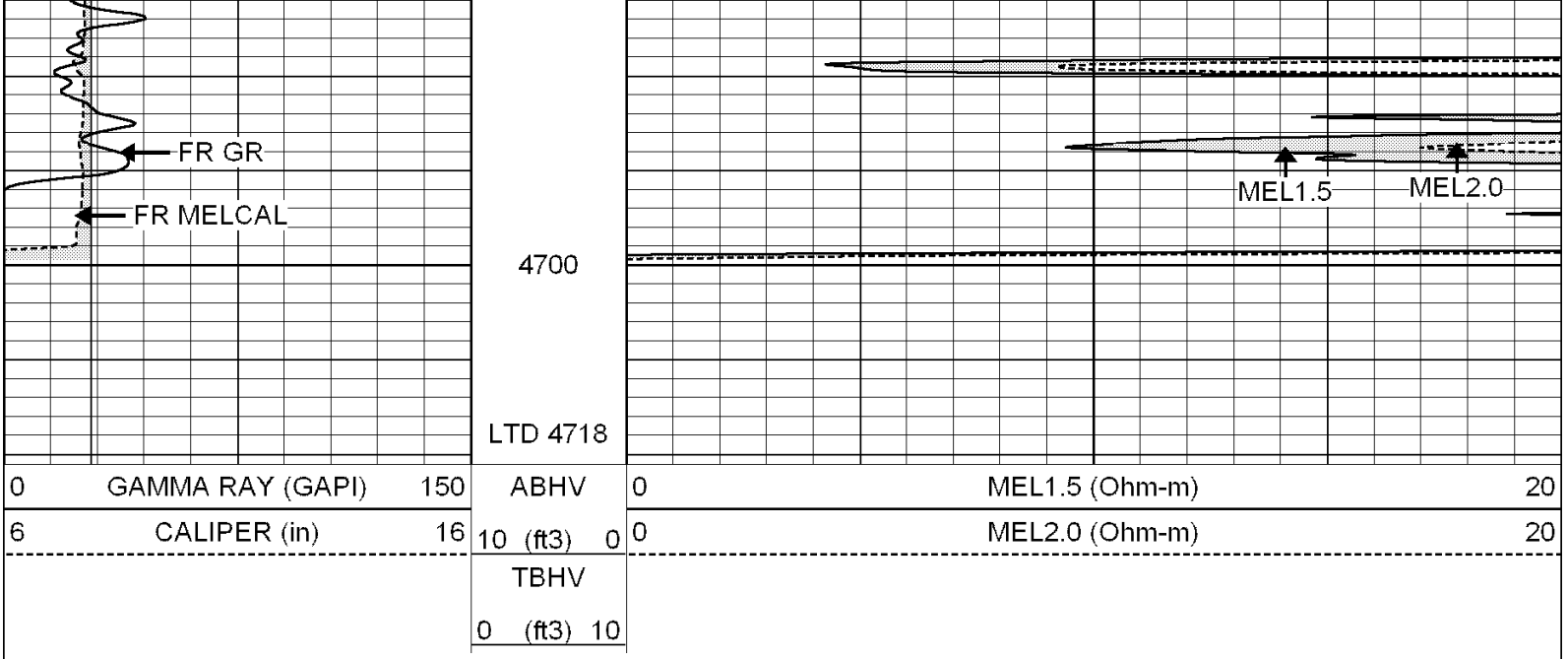








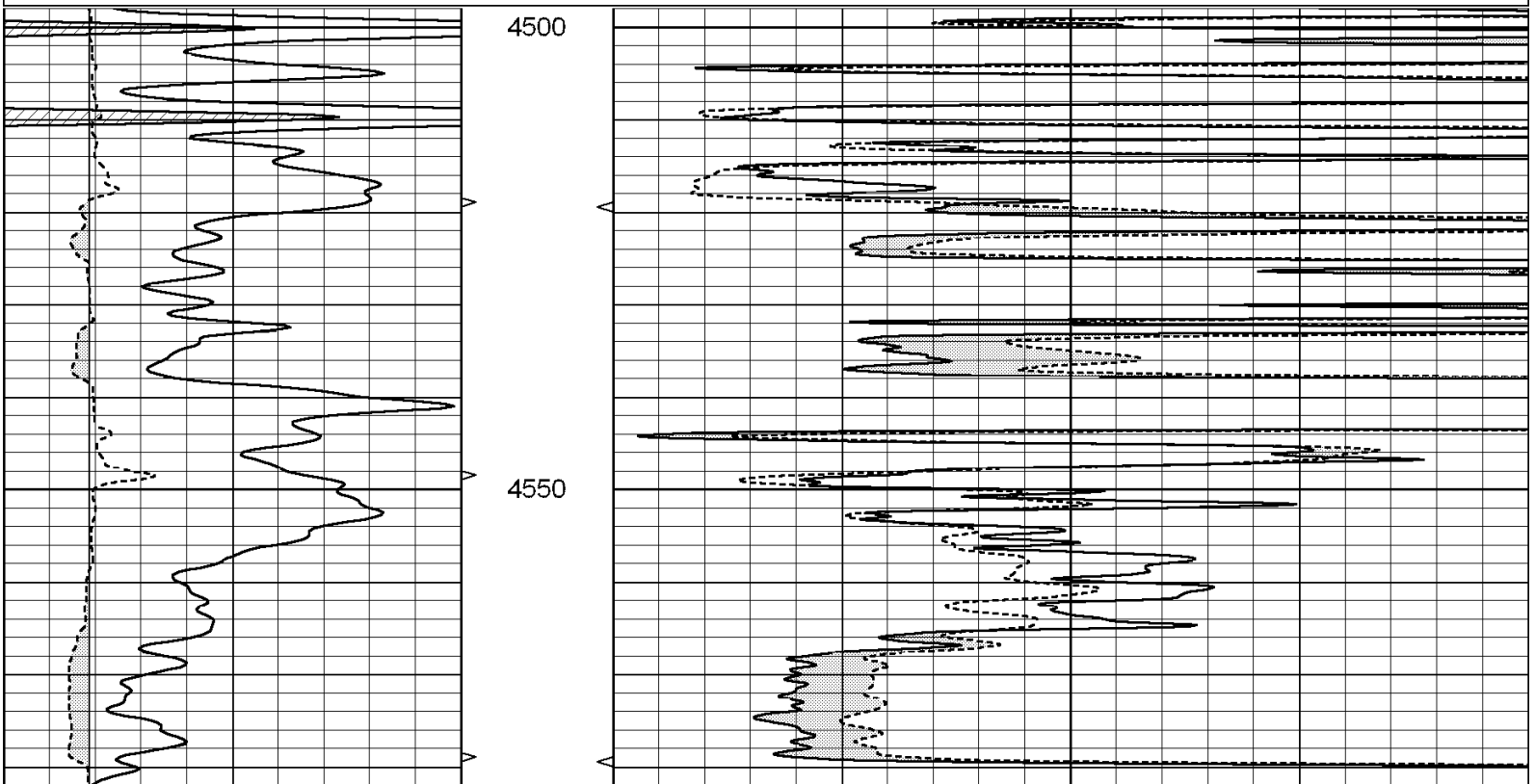




REPEAT SECTION

Database File: 004724pe.db
 Dataset Pathname: pass5.4
 Presentation Format: micro
 Dataset Creation: Thu Feb 25 15:23:25 2010 by Calc Open-Cased 060407
 Charted by: Depth in Feet scaled 1:240

0	GAMMA RAY (GAPI)	150	ABHV	0	MEL1.5 (Ohm-m)	20
6	CALIPER (in)	16	10 (ft3) 0	0	MEL2.0 (Ohm-m)	20
			TBHV			
			0 (ft3) 10			



1.5" Calibration:

Gain=40.000

Offset=-3.000

References
Readings

Low Cal
0.000
0.065

High Cal
20.000
1.210

2" Calibration:

Gain=45.000

Offset=-2.000

References
Readings

Low Cal
0.000
0.012

High Cal
20.000
1.043

Gamma Ray Calibration Report

Serial Number:
Tool Model:
Performed:

GR4
OPEN
Thu Feb 25 15:12:39 2010

Calibrator Value:

200.0

GAPI

Background Reading:
Calibrator Reading:

0.0
189.0

cps
cps

Sensitivity:

0.8000

GAPI/cps