



**Borehole Compensated
Sonic Log**

DIGITAL LOG (785) 625-3858

API No. 15-069-20,322-00-00	Company Falcon Exploration, Inc.	Location 1230' FSL & 730' FEL	Other Services CNL/CDL MEL/DIL
Well Williams No. 1-13	County Gray		
Field Wildcat	State Kansas		
Log Measured From Kelly Bushing	Sec: 13	Twp: 28 S	Rge: 30 W
Drilling Measured From Kelly Bushing			Elevation K.B. 2810 D.F. 2800 G.L. 2800

Run Number	02/15/2010	Twp		
Type Log	BHC Sonic			
Depth Driller	6344			
Depth Logger	6251			
Bottom Logged Interval	6240			
Top Logged Interval	1800			
Type Fluid In Hole	Chemical			
Salinity, PPM CL	1,500			
Density	9.2			
Level	Full			
Max. Rec. Temp. F	141			
Operating Rig Time	5 Hours			
Equipment -- Location	10 Hays			
Recorded By	J. Wellbrock			
Witnessed By	K. Reavis			

Borehole Record		Casing Record					
Run No	Bit	From	To	Size	Wgt.	From	To
1	12.25	00	1813	8.625	24#	00	1813
2	7.875	1813	6344				

<<< Fold Here >>>

All interpretations are opinions based on inferences from electrical or other measurements and we cannot and do not guarantee the accuracy or correctness of any interpretation, and we shall not, except in the case of gross or willful negligence on our part, be liable or responsible for any loss, costs, damages, or expenses incurred or sustained by anyone resulting from any interpretation made by any of our officers, agents or employees. These interpretations are also subject to our general terms and conditions set out in our current Price Schedule.

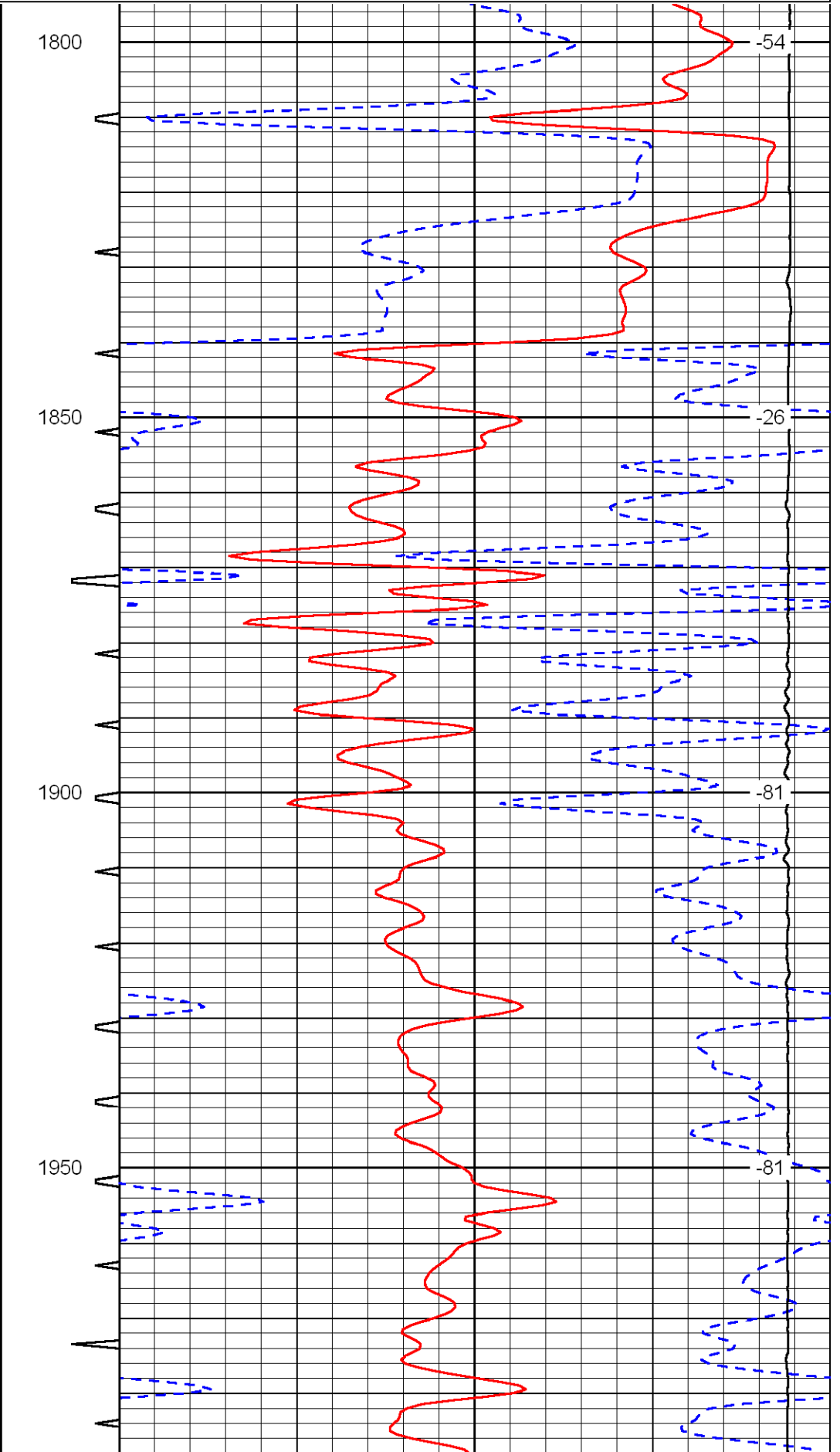
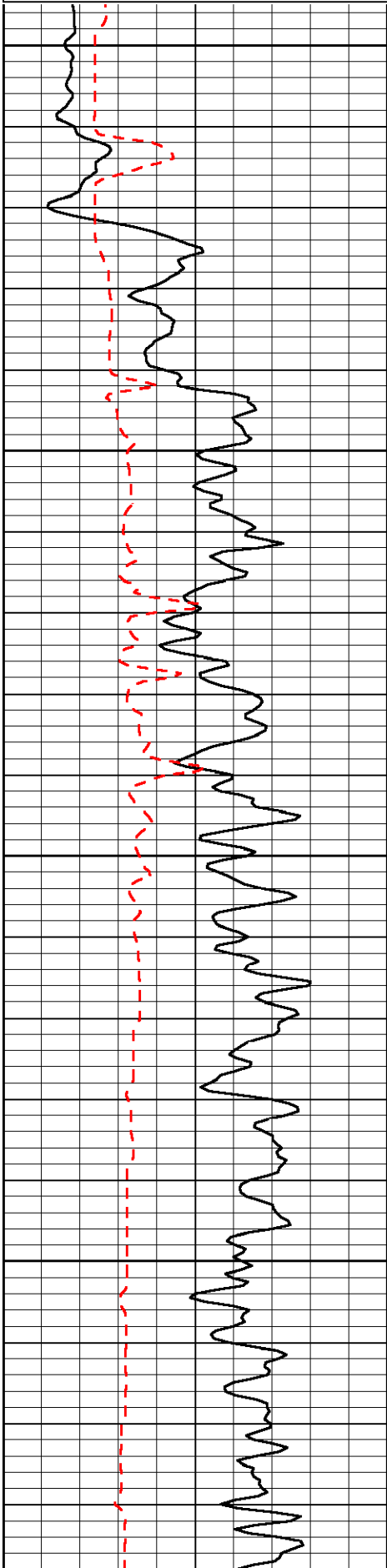
Comments

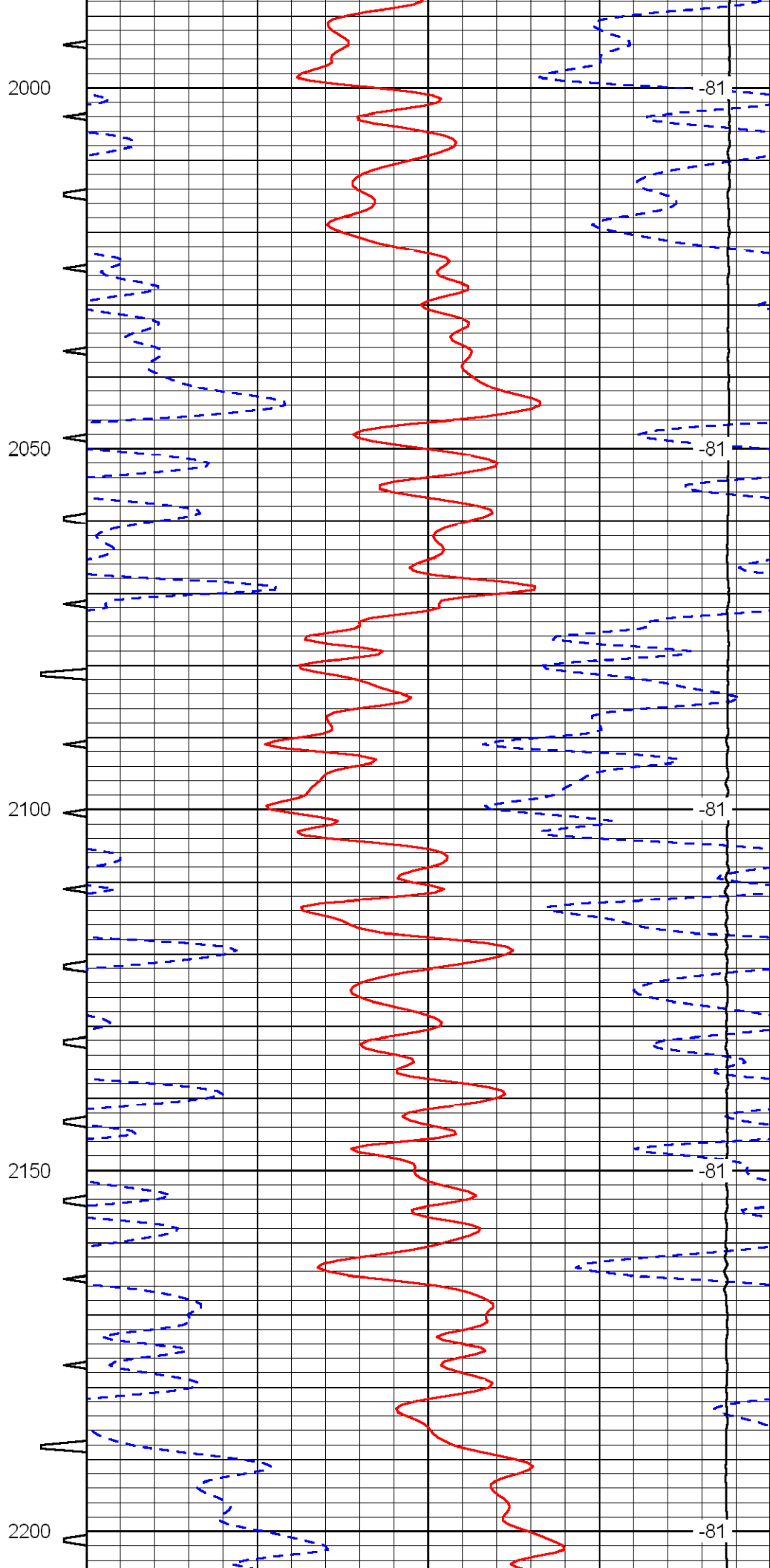
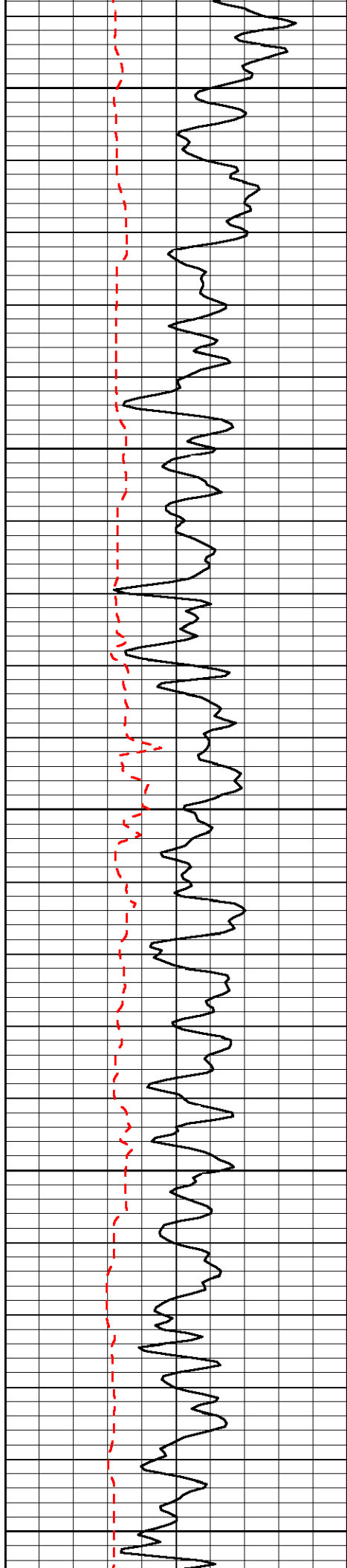
Thank you for using Log-Tech, Inc.
(785) 625-3858

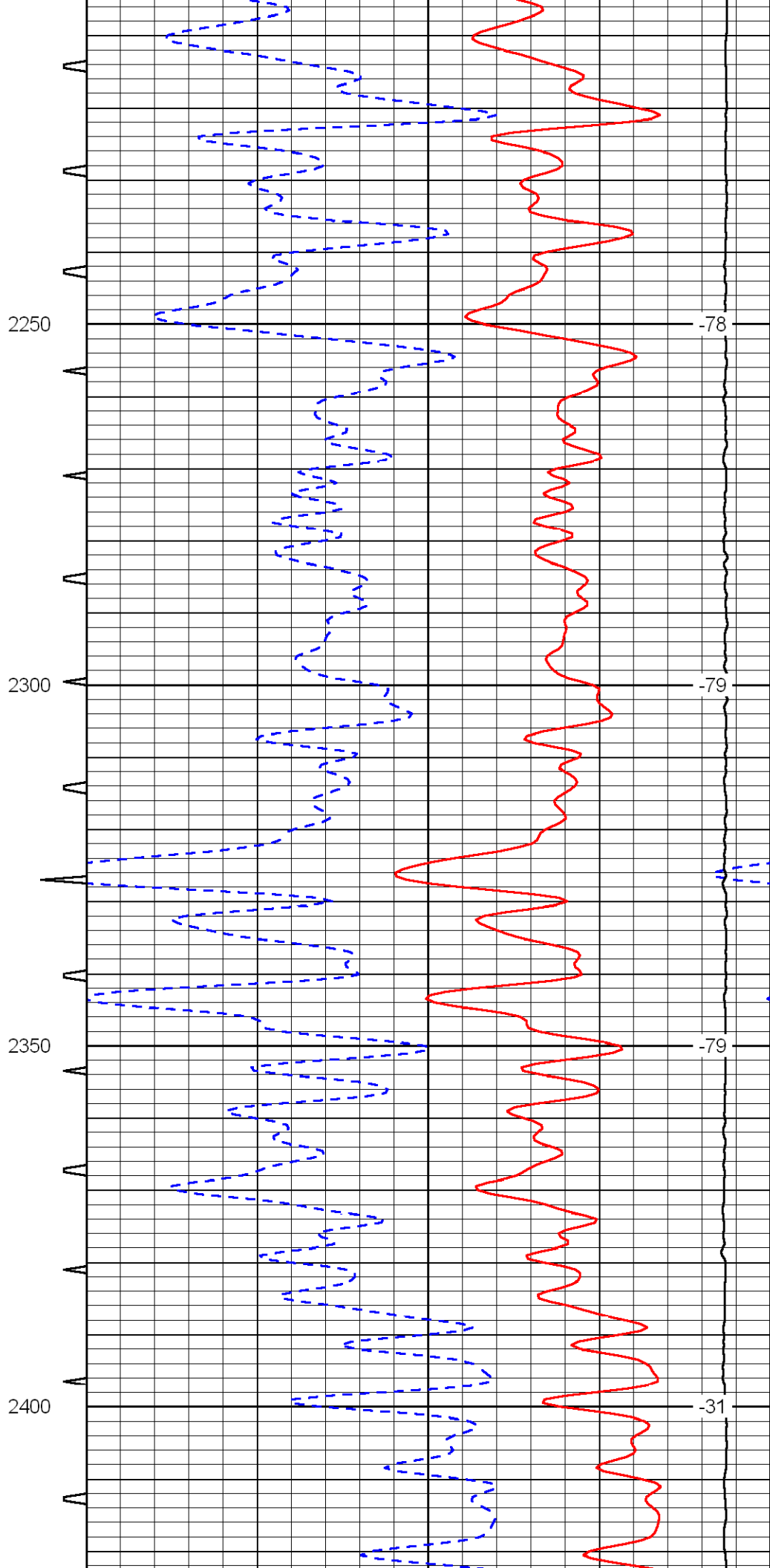
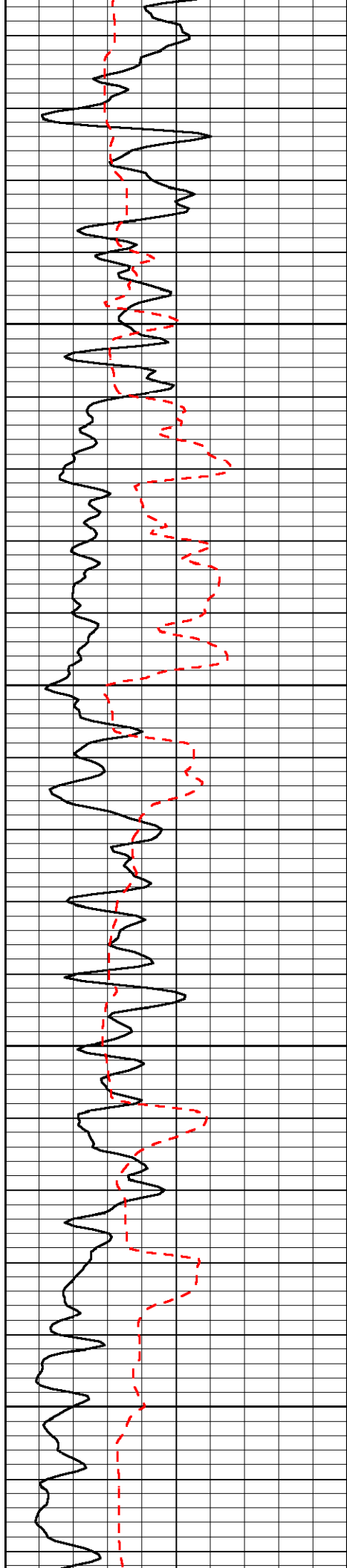
Montezuma to Ingals Black Top, 3/4 N, 5 W on BB Road, 3/4 N, W Into

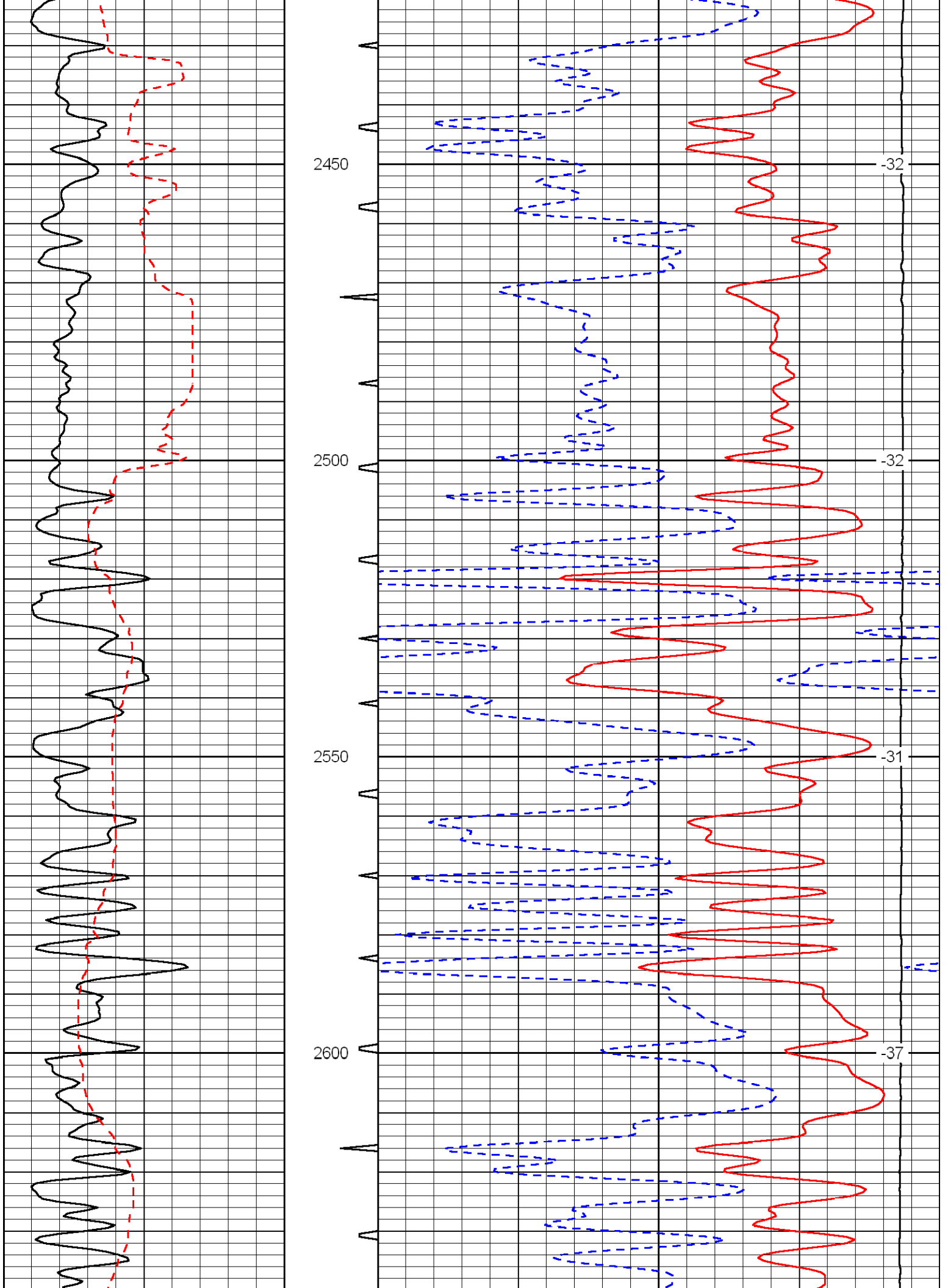
Database File: c:\warrior\data\facon_williams #1-13\falhd.db
 Dataset Pathname: dil\fa2in
 Presentation Format: sonic
 Dataset Creation: Mon Feb 15 18:59:11 2010
 Charted by: Depth in Feet scaled 1:240

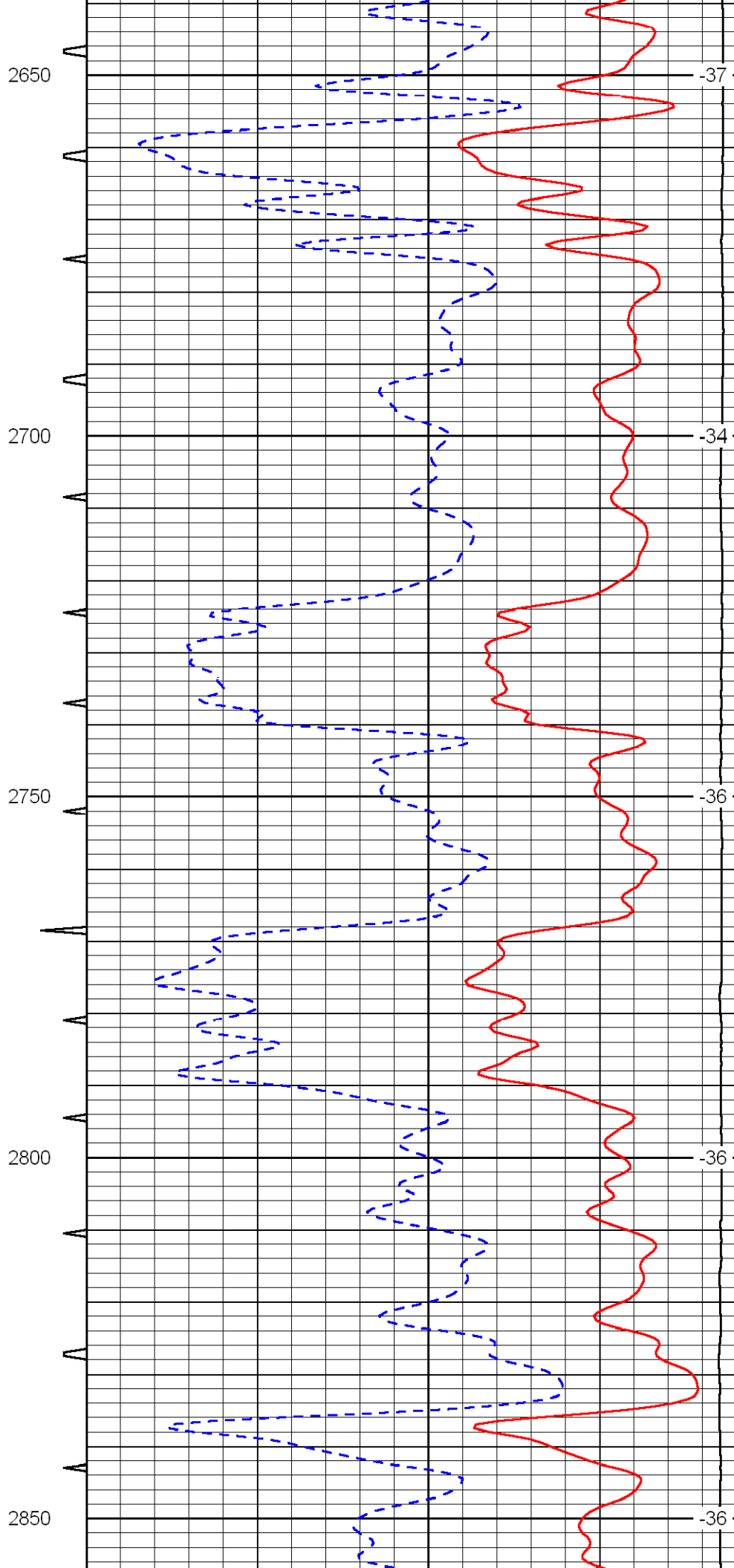
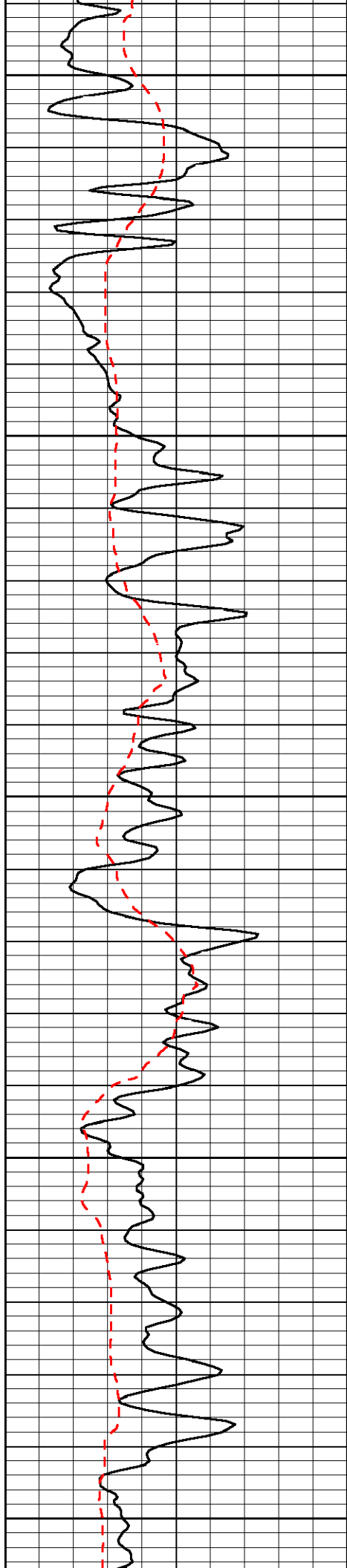
0	Gamma Ray	150	Sonic Int	140	Delta Time (usec/ft) (usec/ft)	40
150	Gamma Ray	300	5 (msec)	0	SPOR (pu)	-10
6	Caliper (in)	16		15000	LTEN (lb) (lb)	0
						LSPD (ft/min)

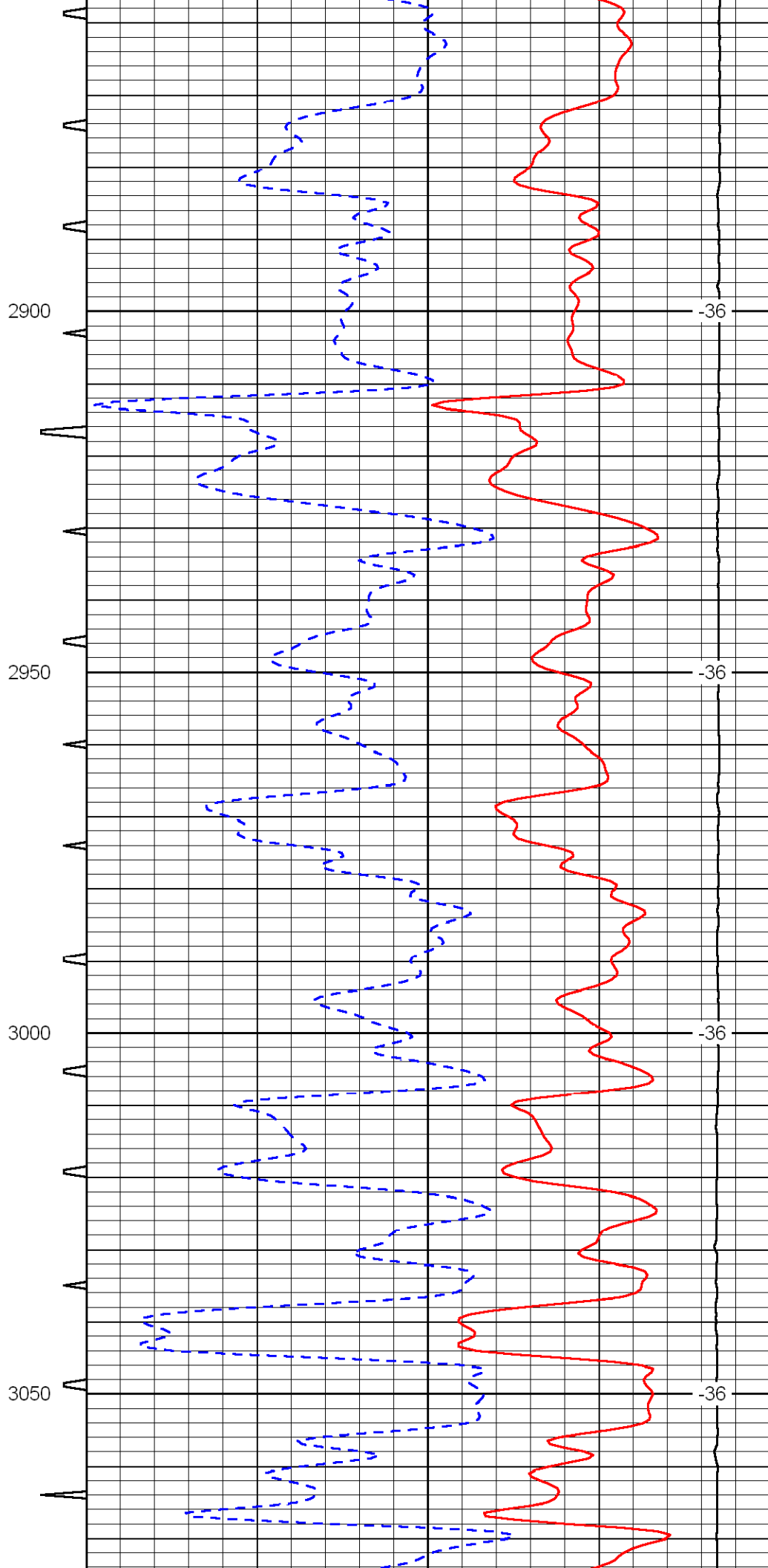
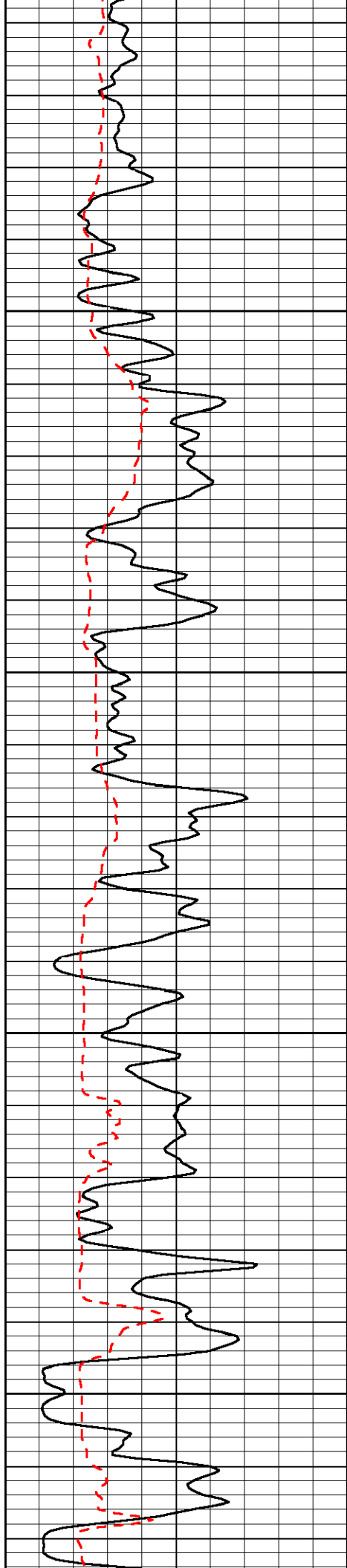


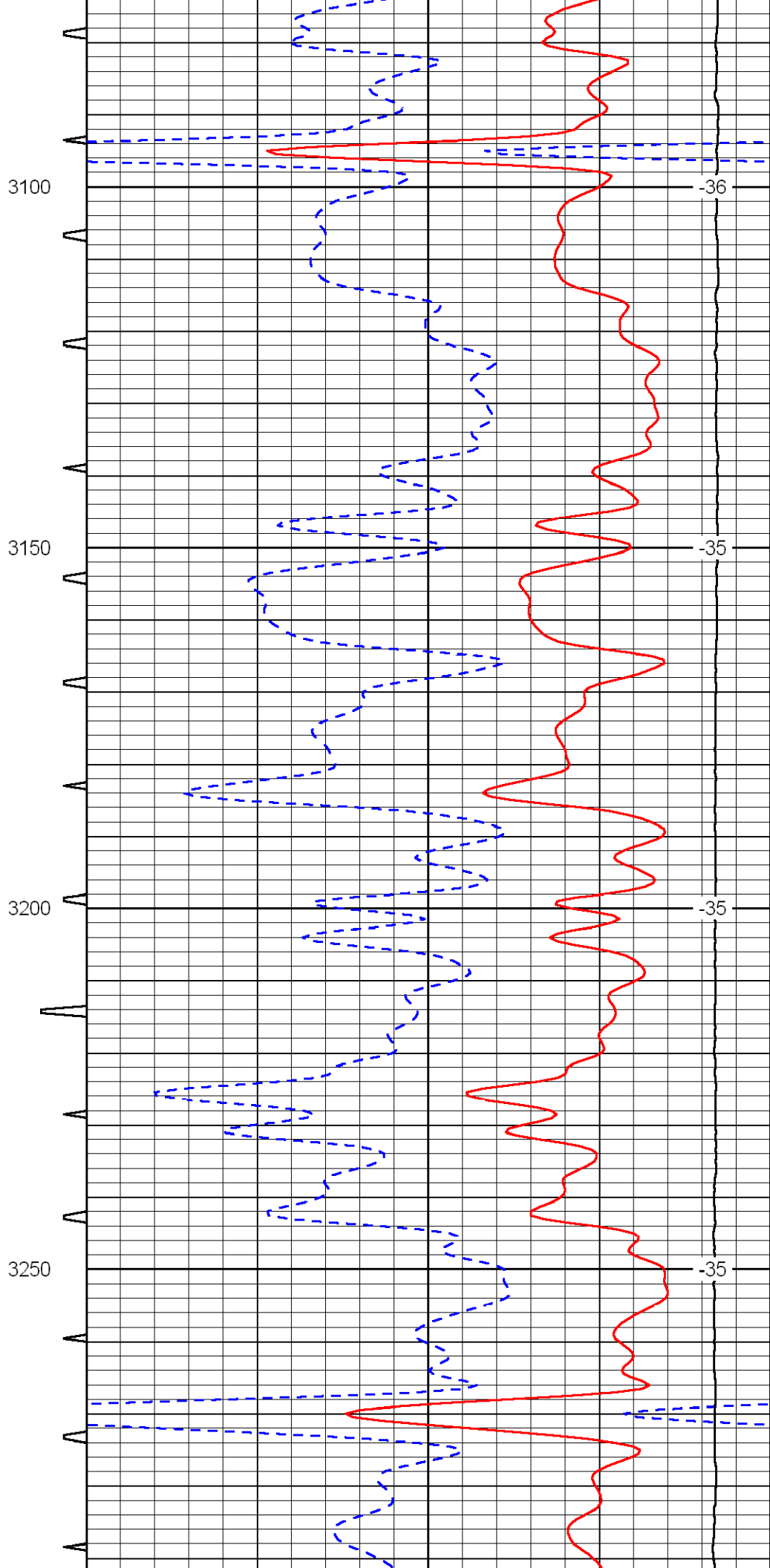
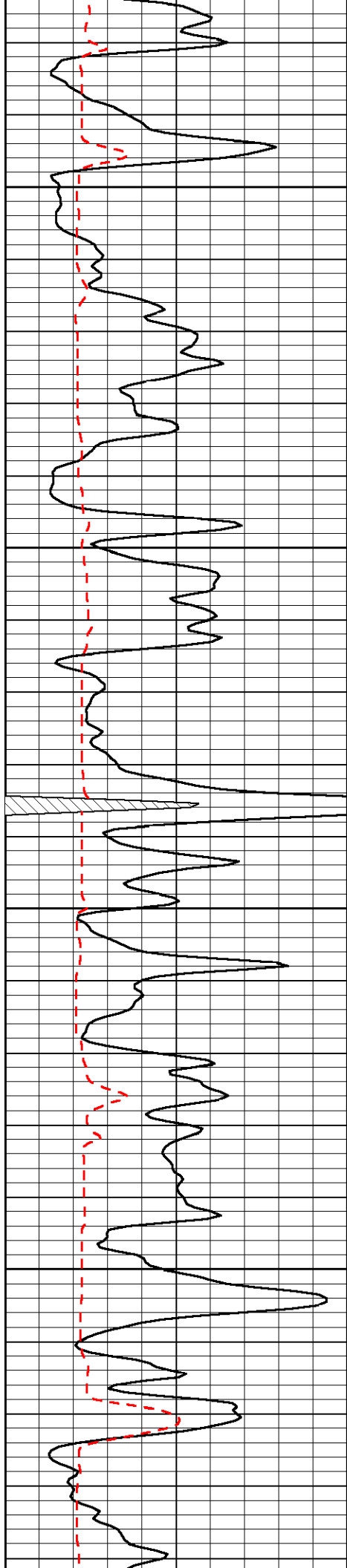


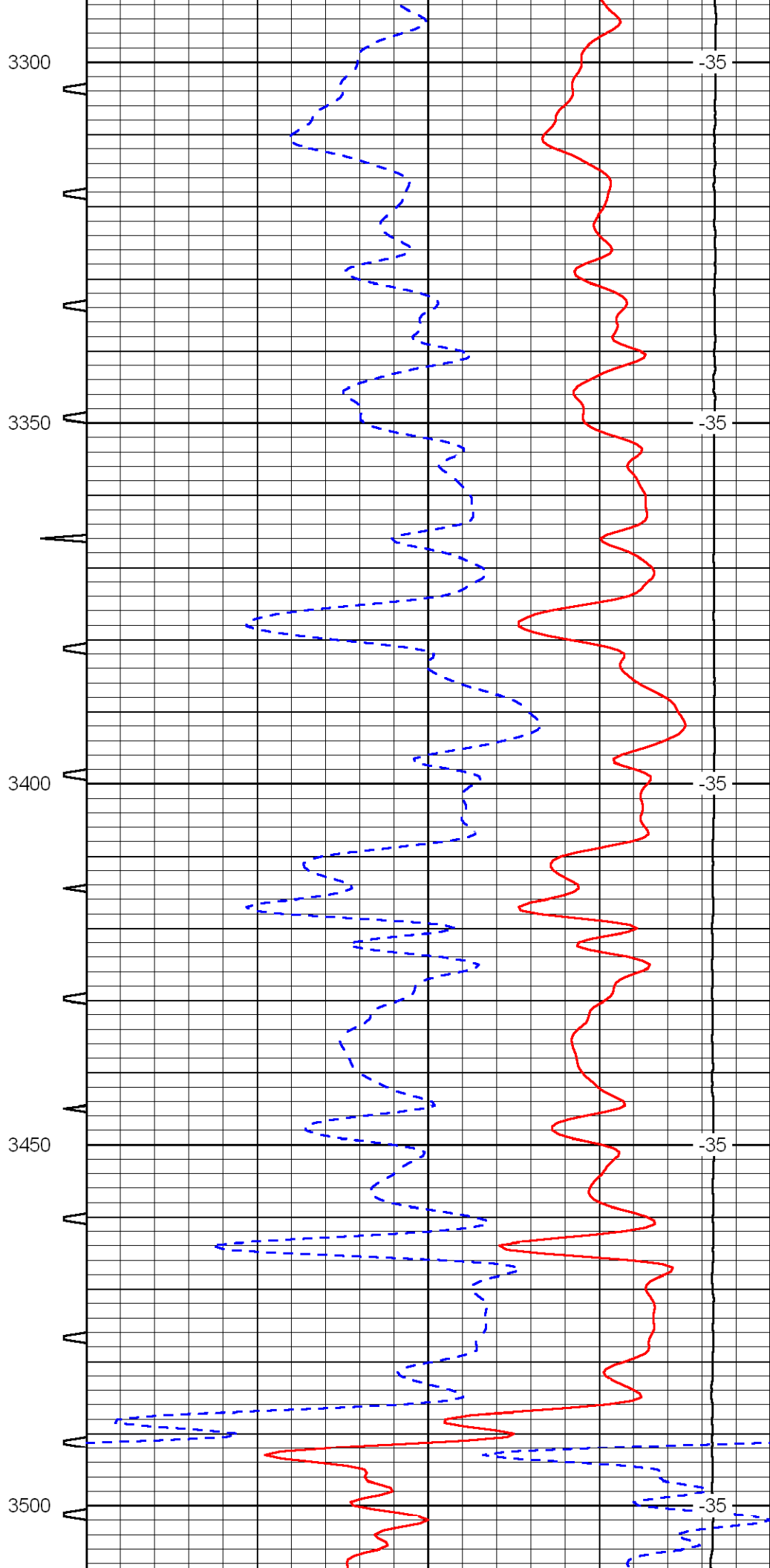
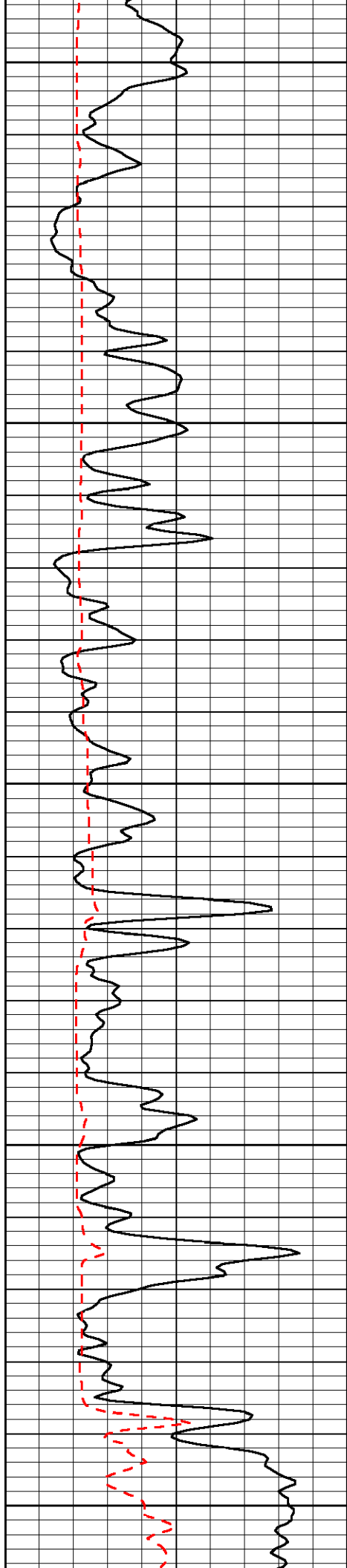


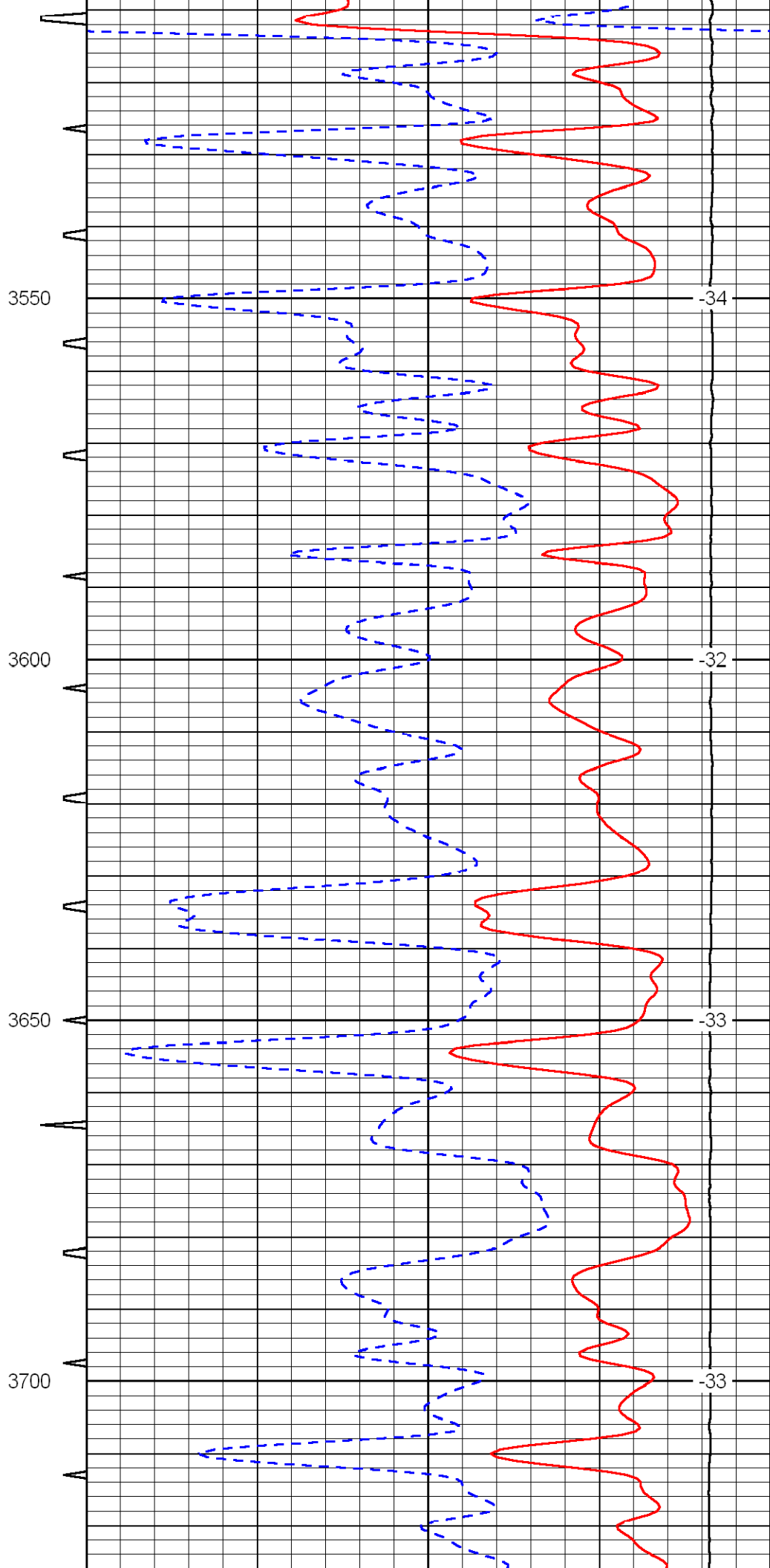
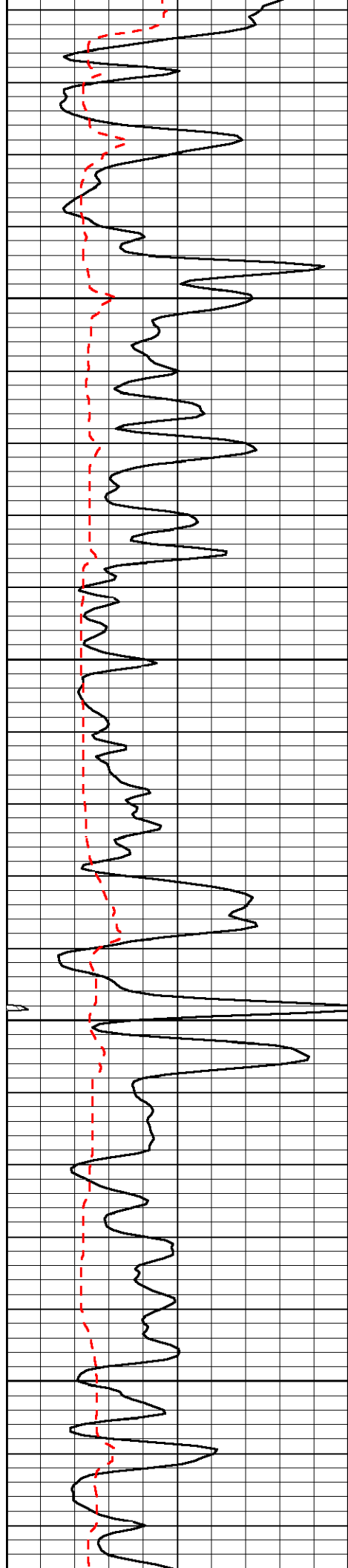


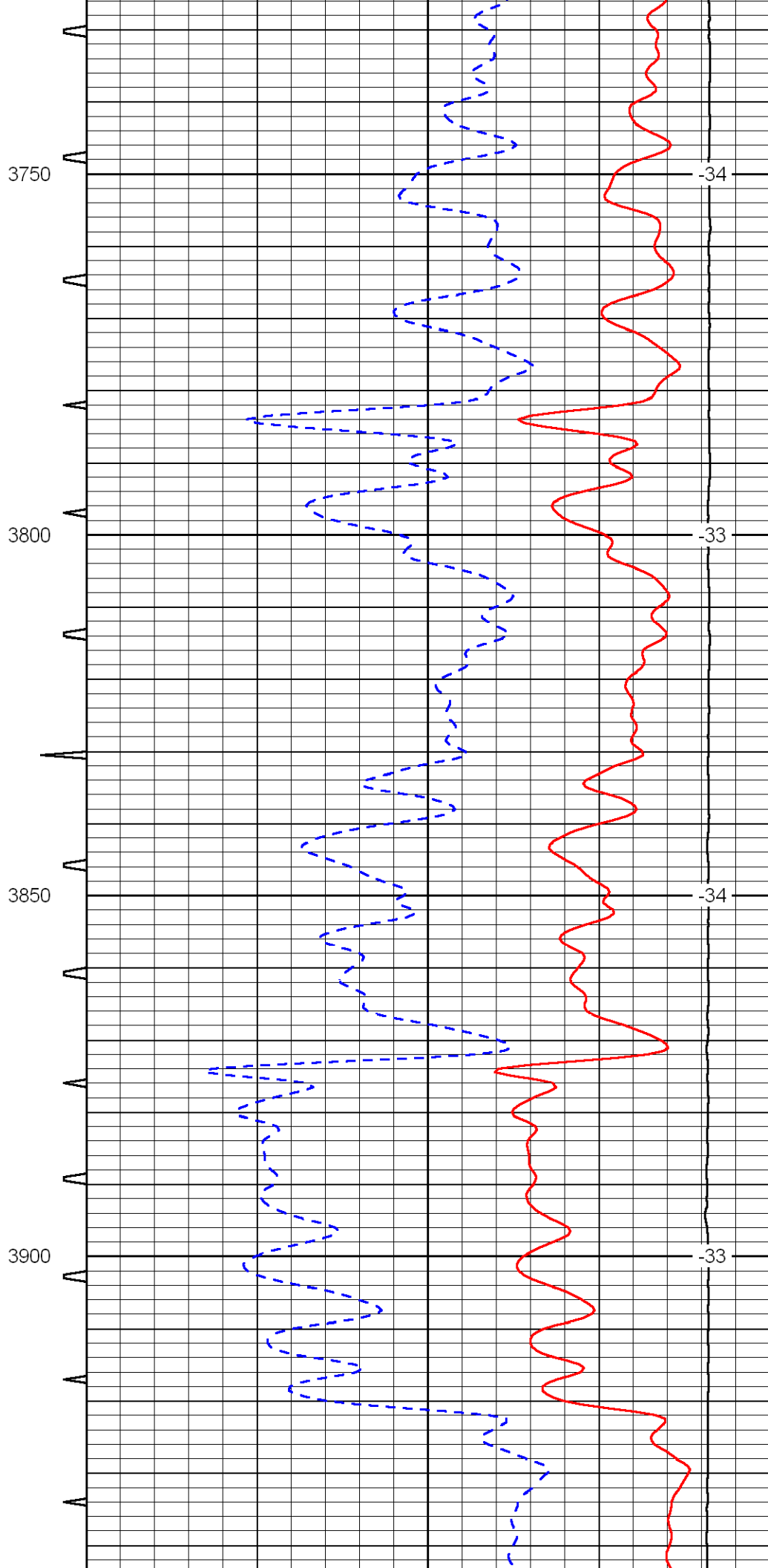
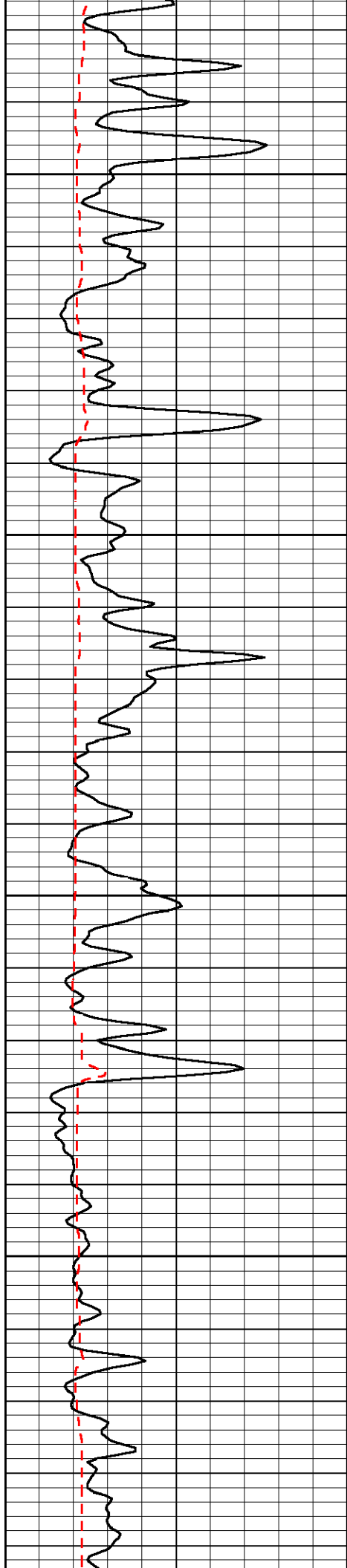


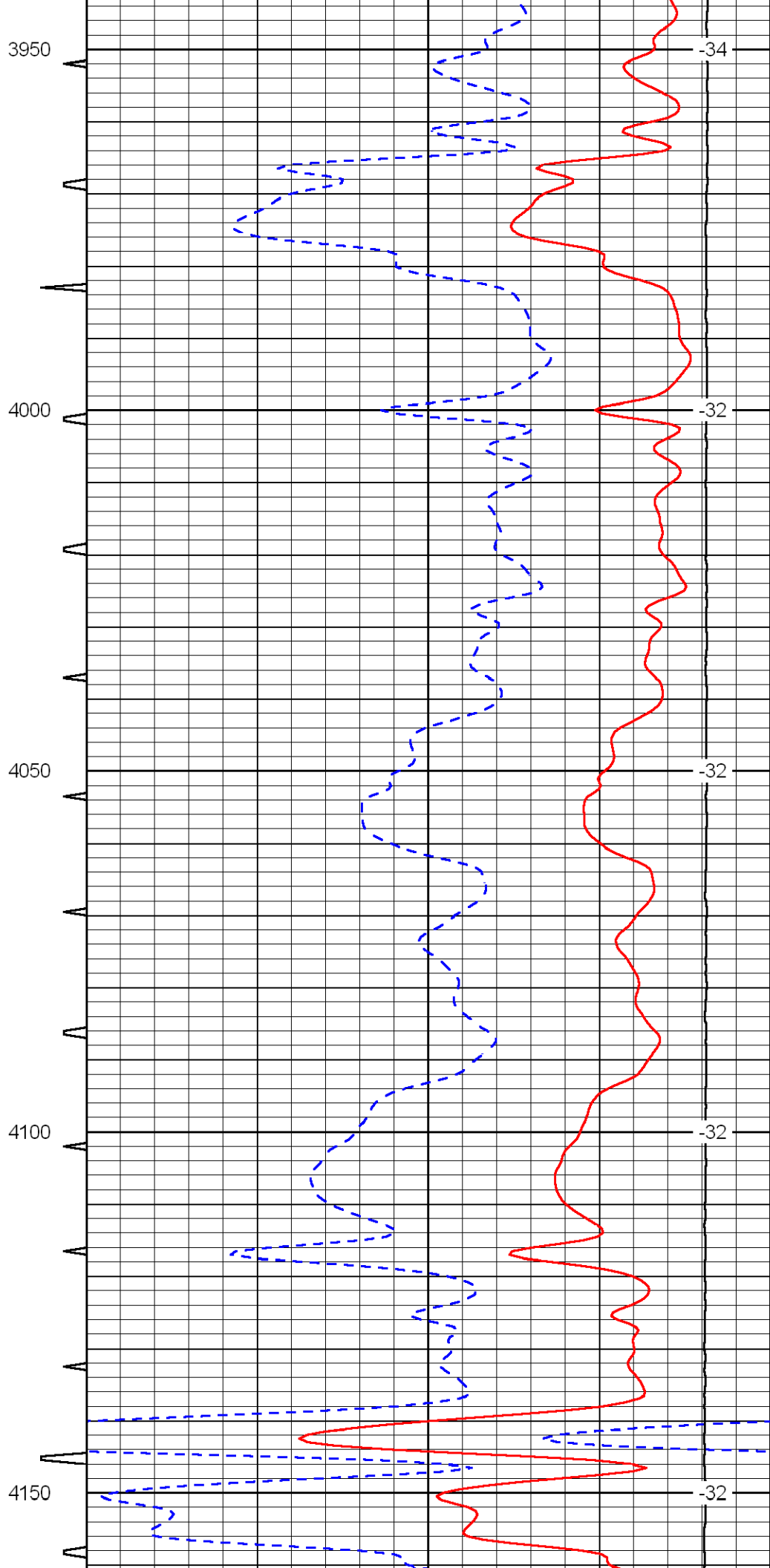
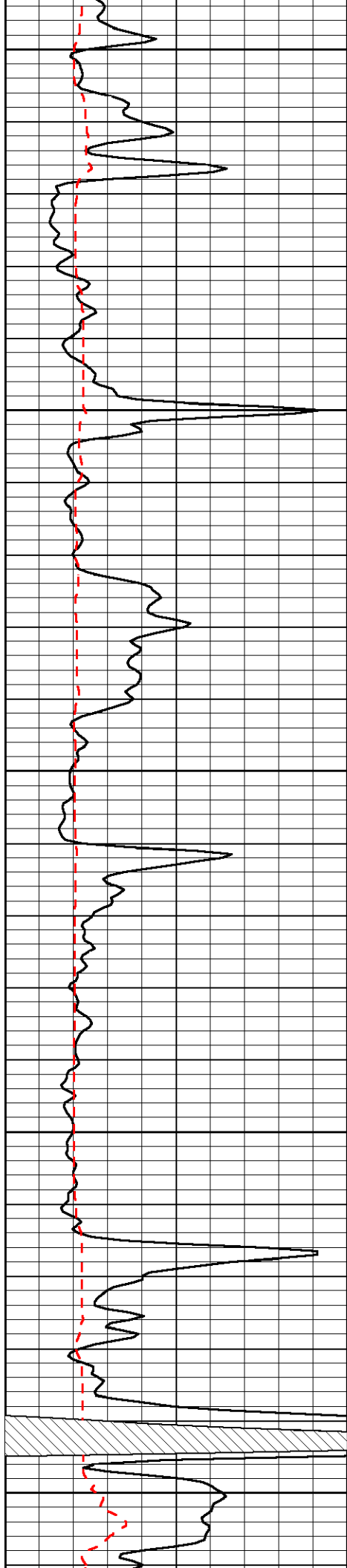


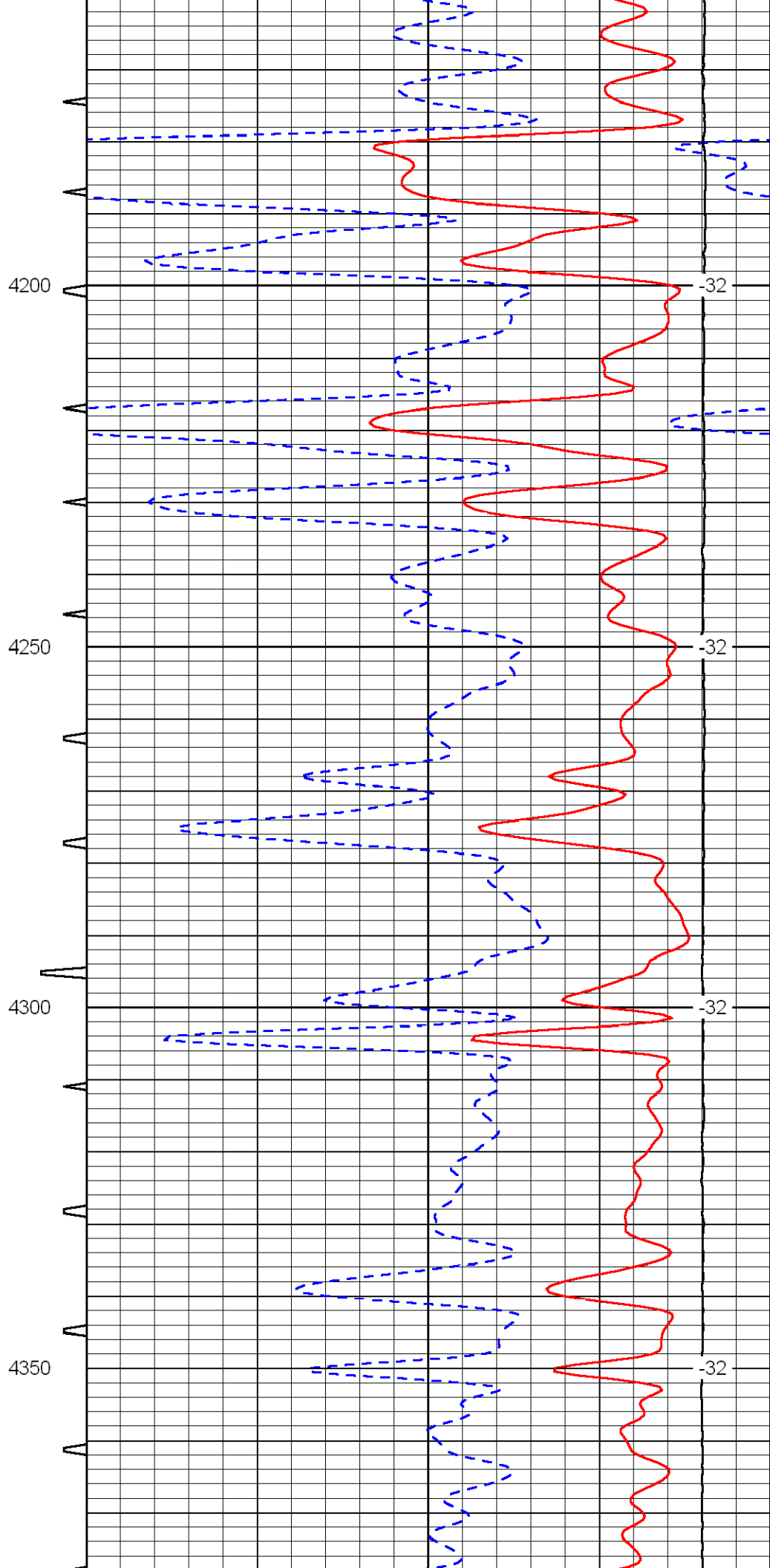
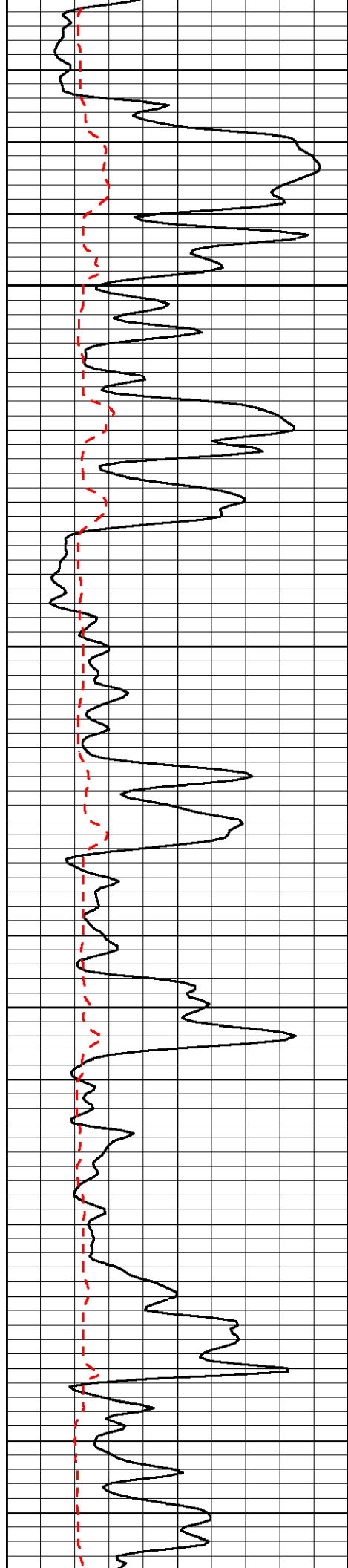


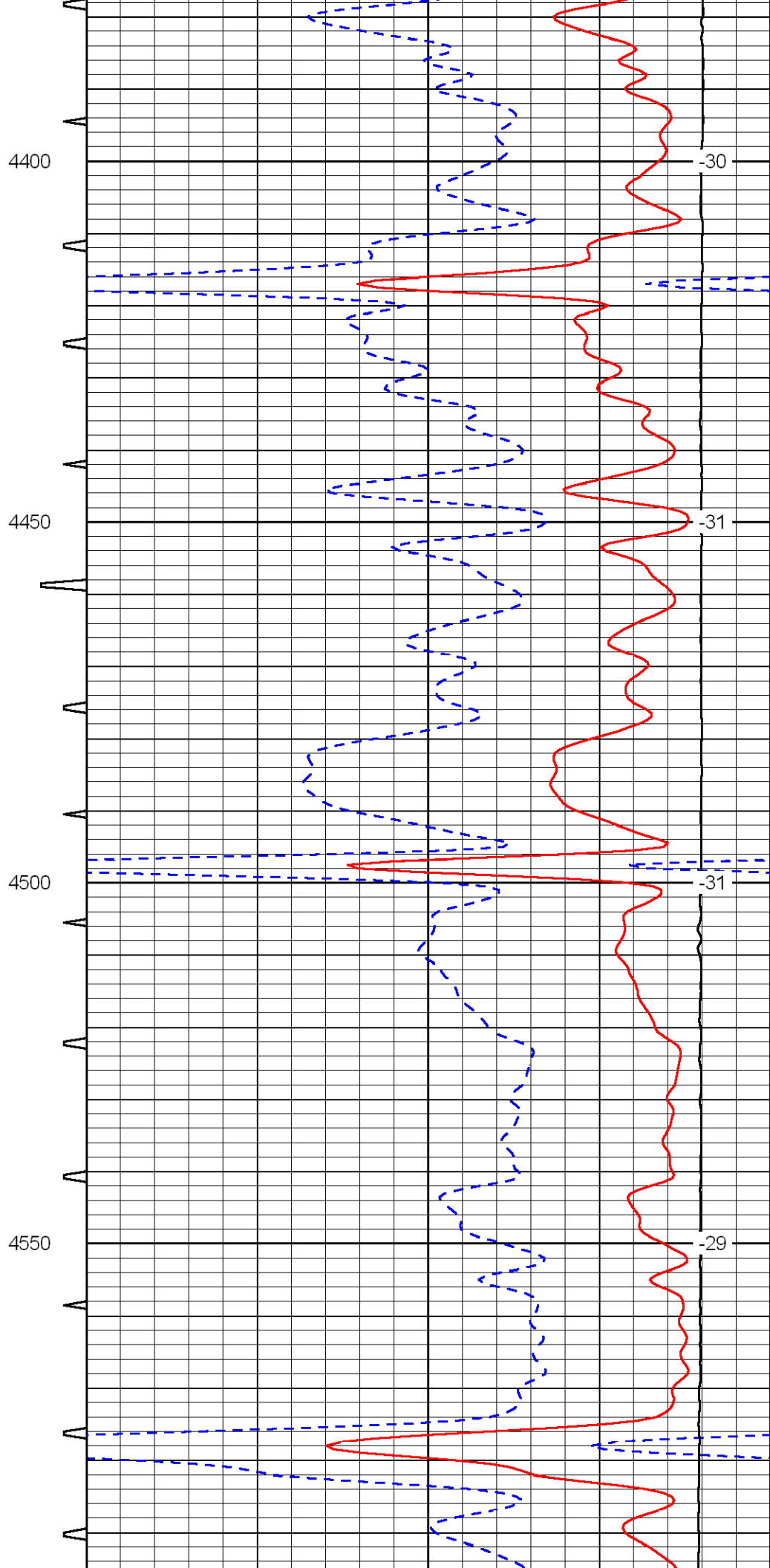
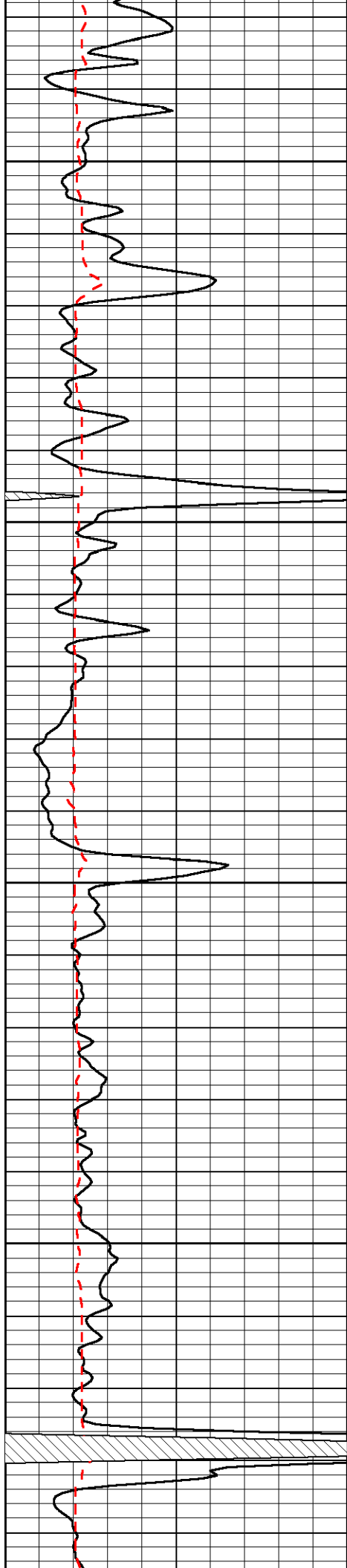


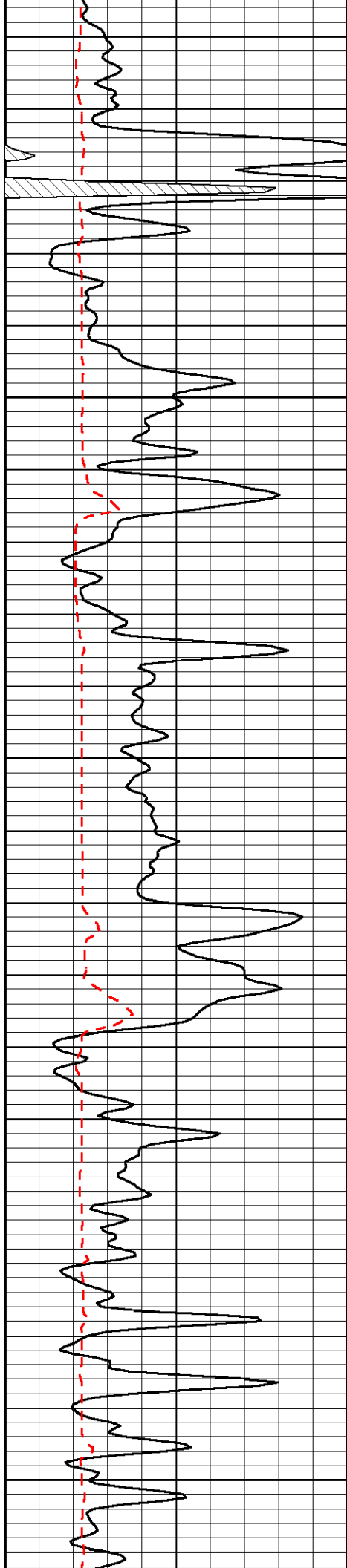












4600

-27

4650

-35

4700

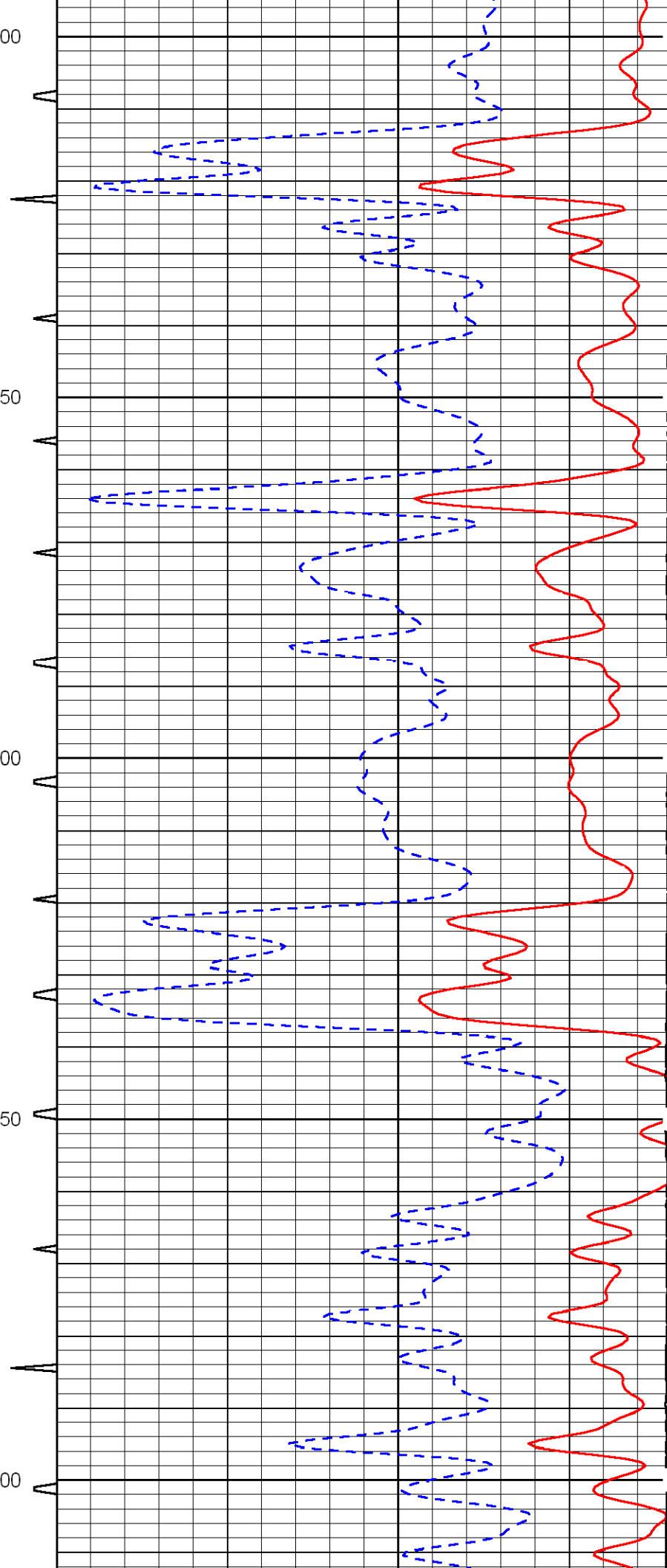
-35

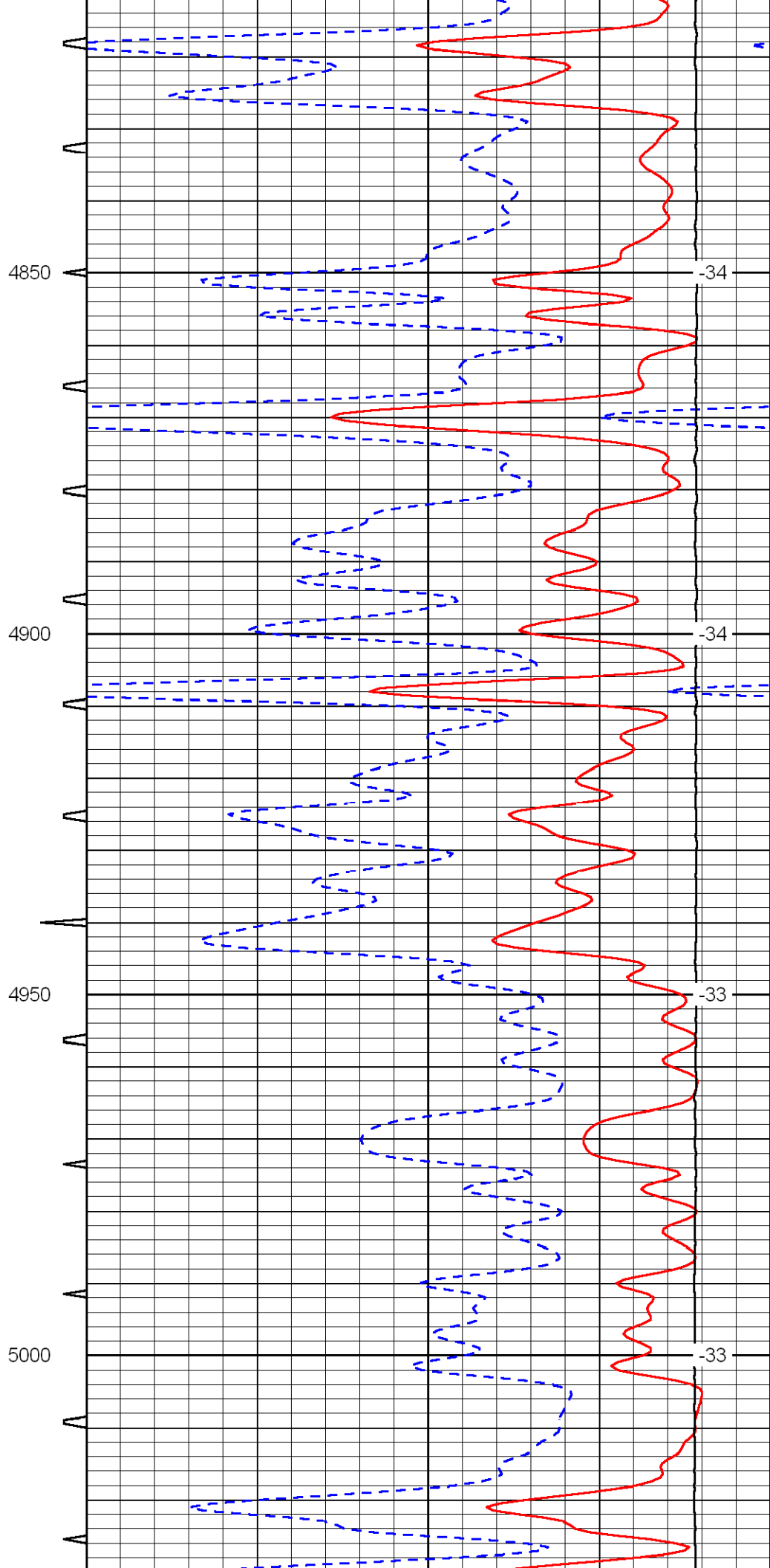
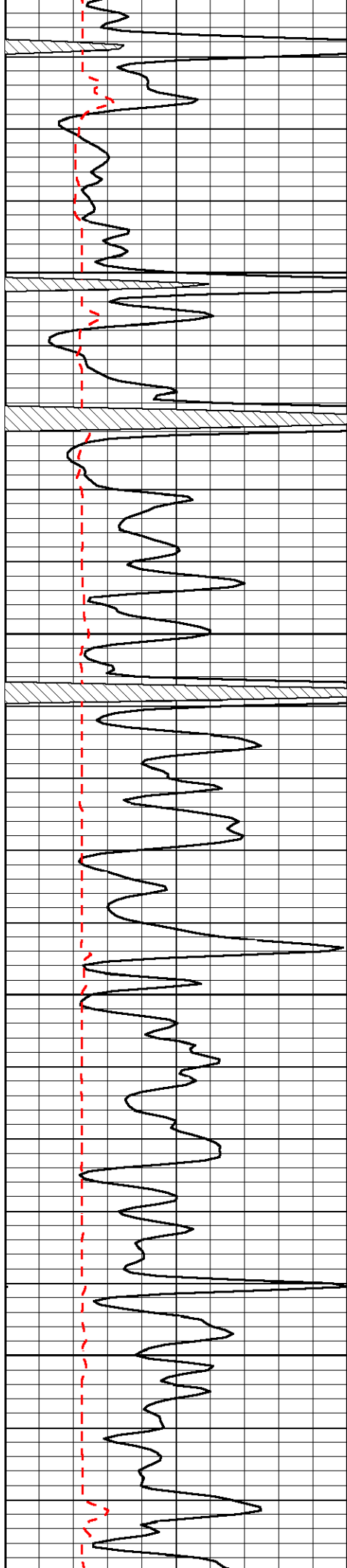
4750

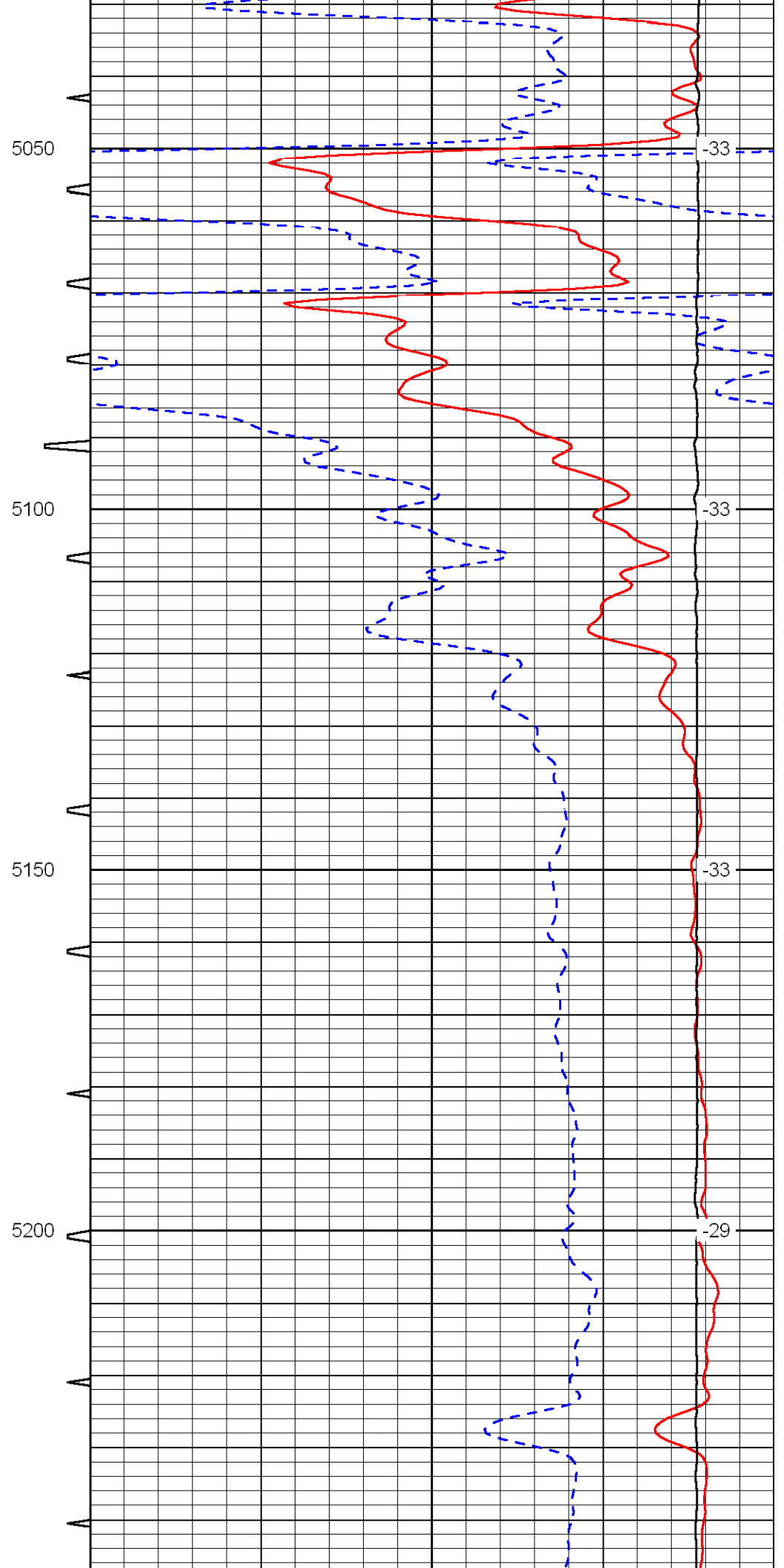
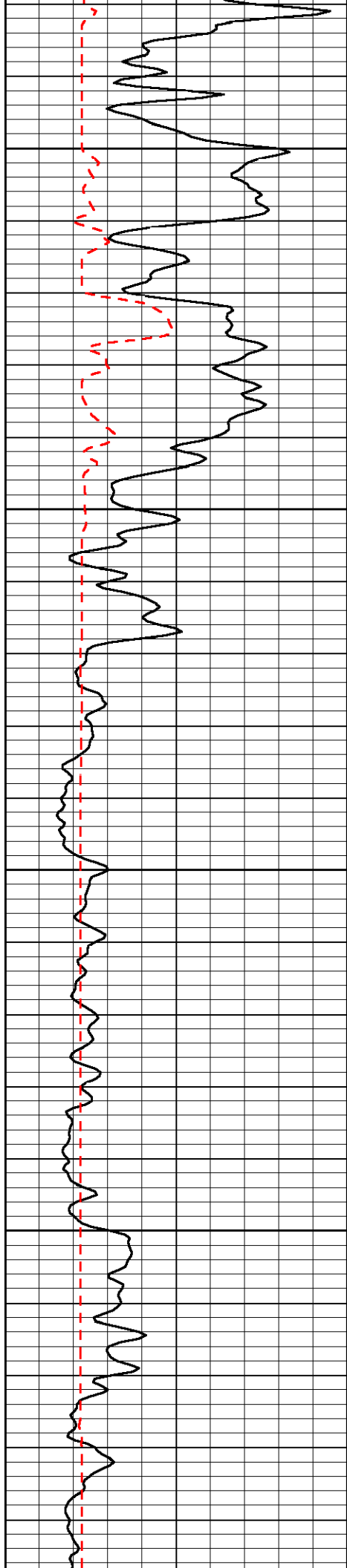
-35

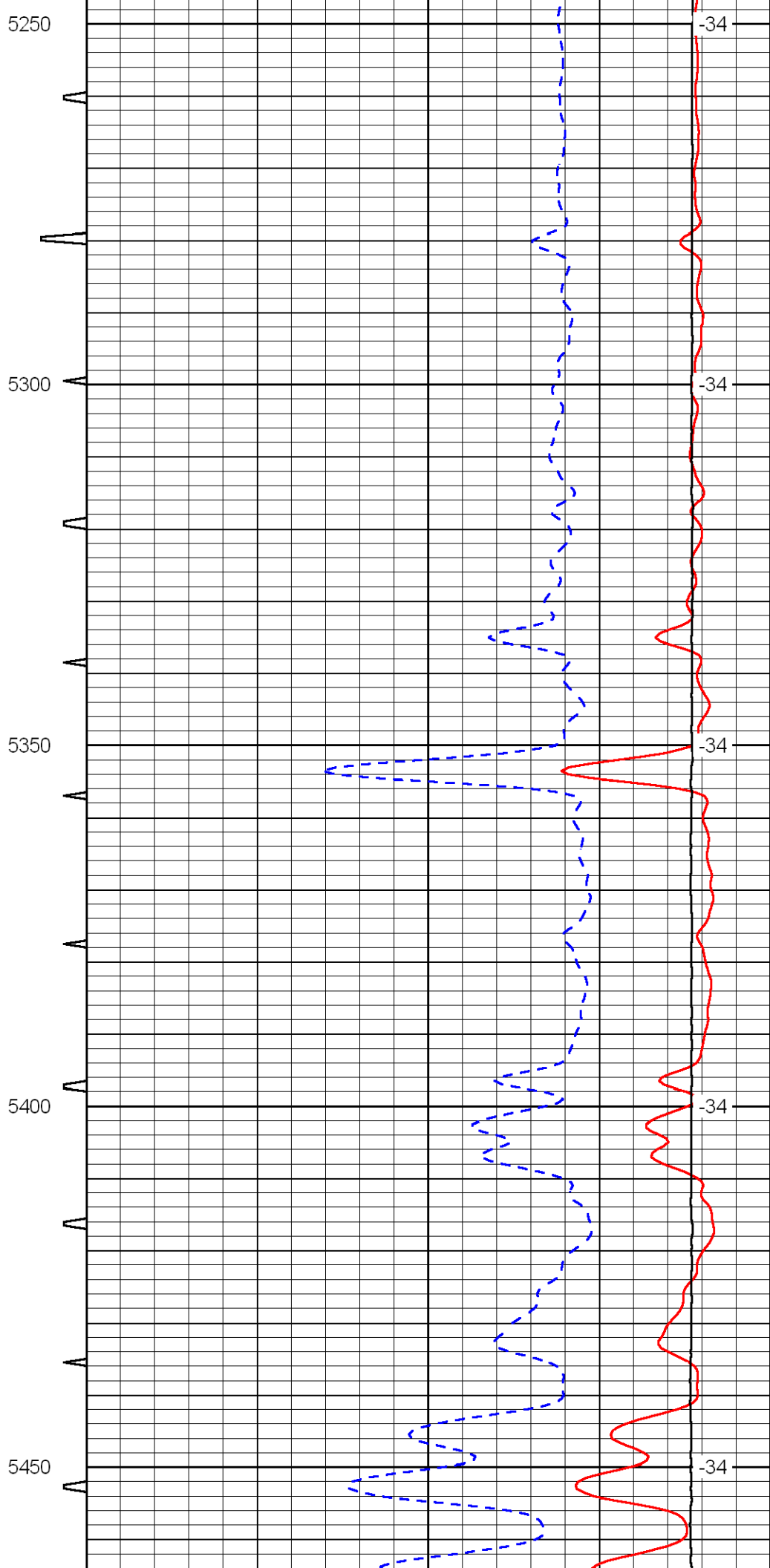
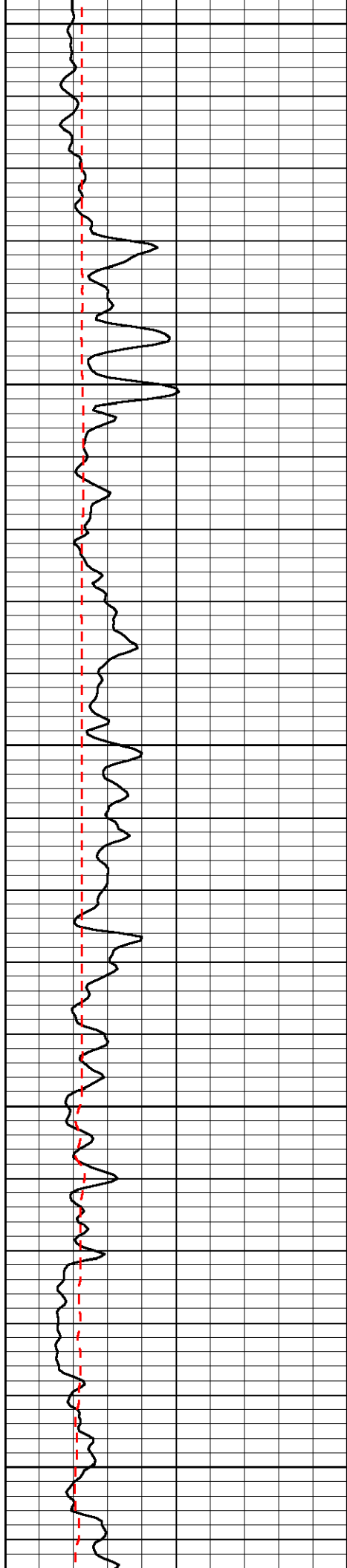
4800

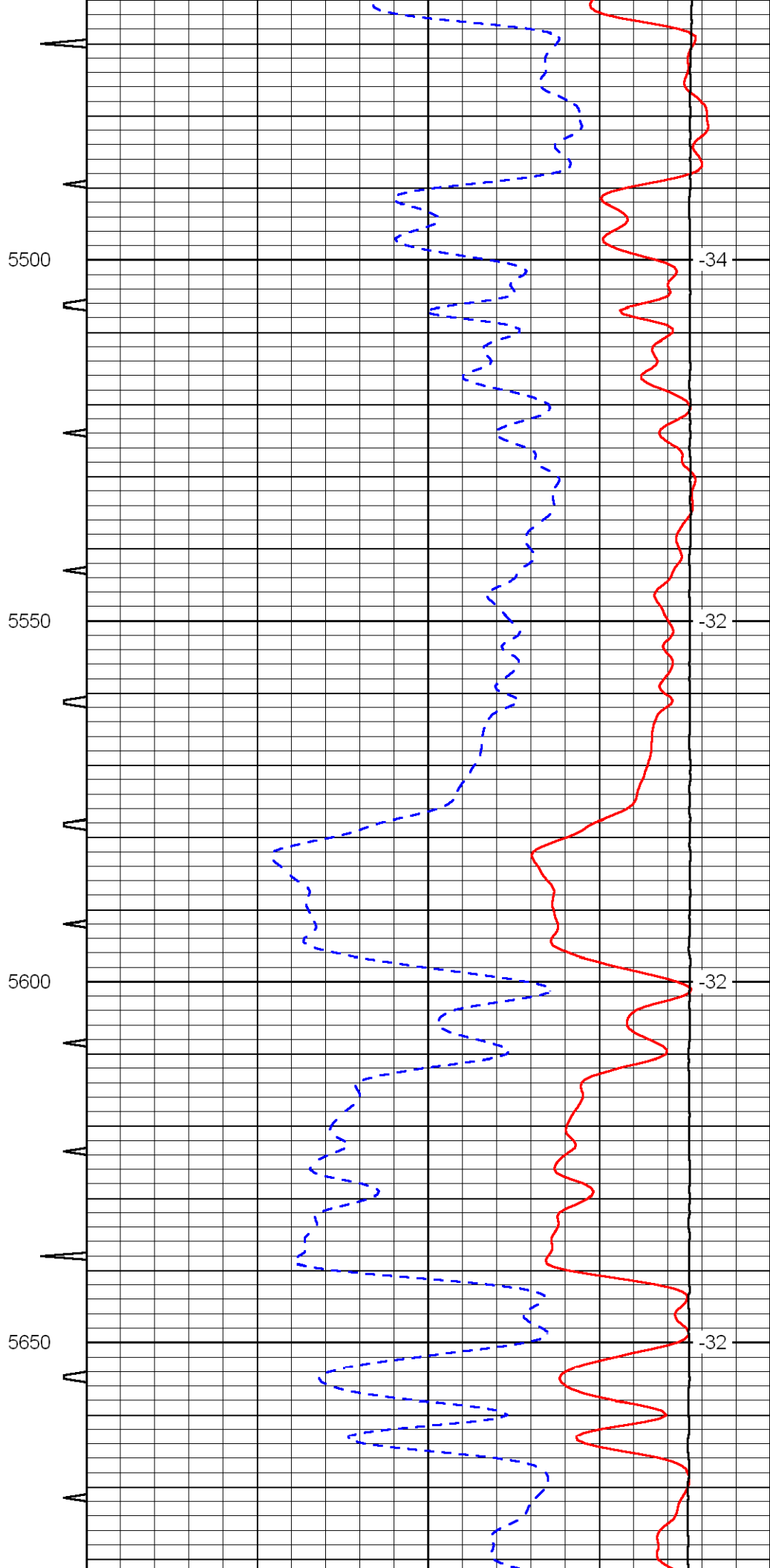
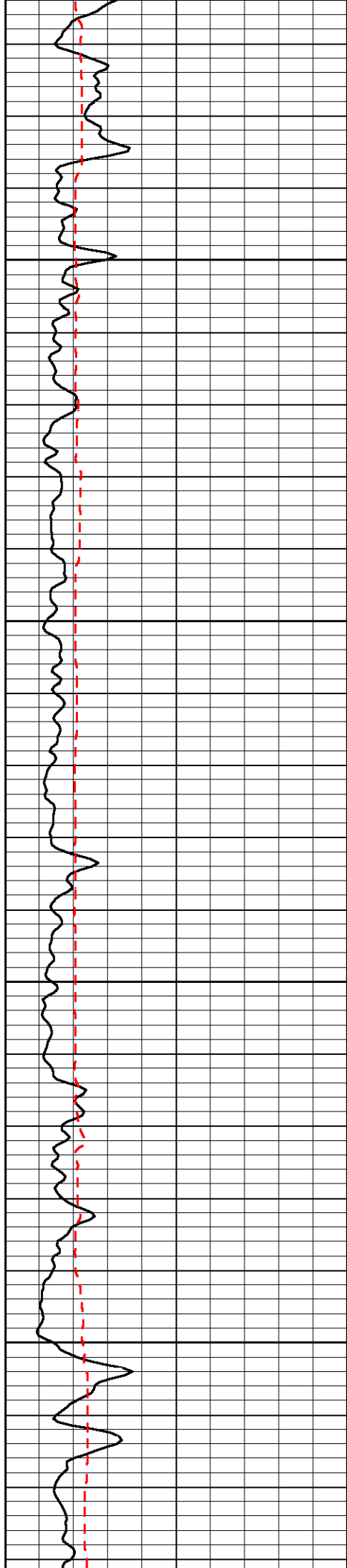
-34

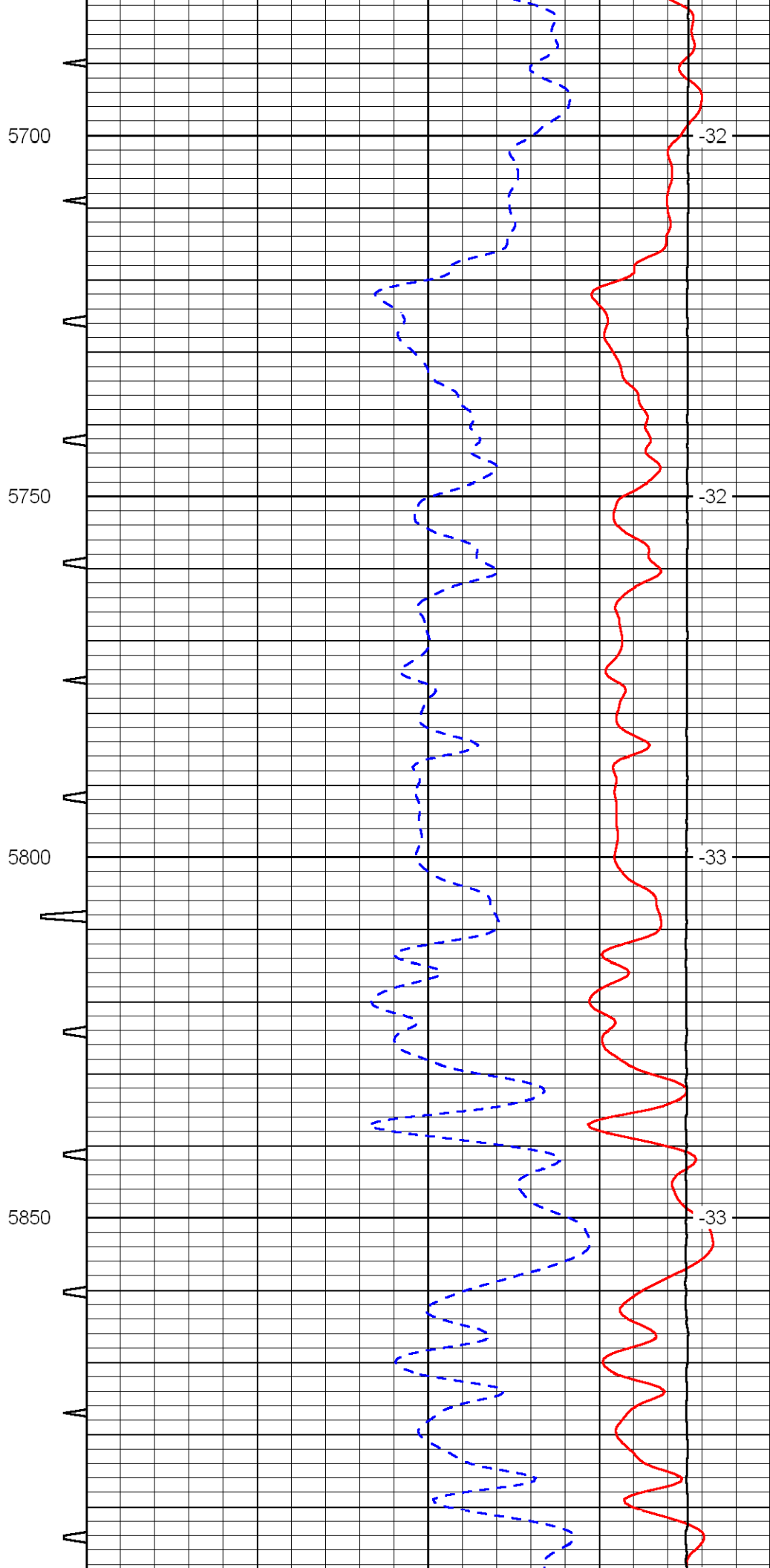
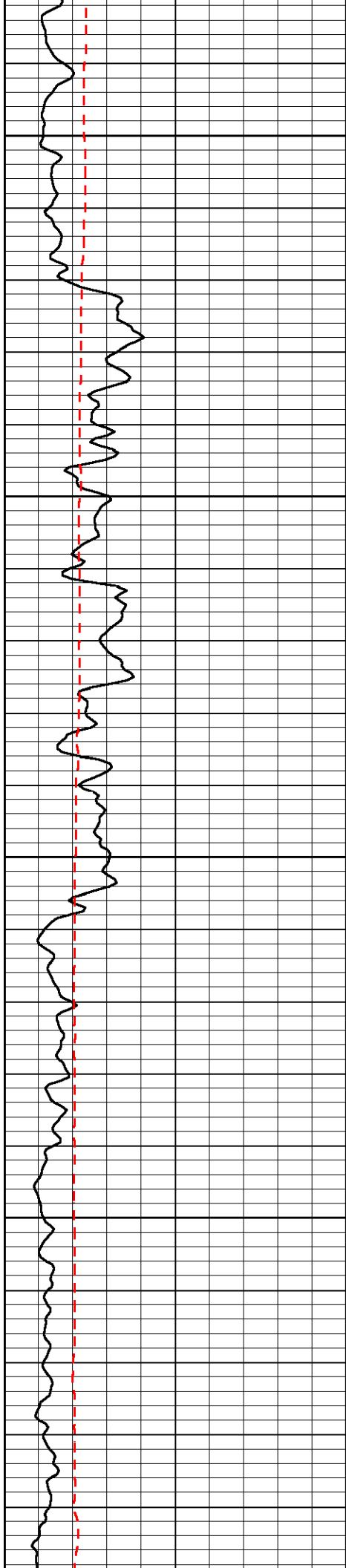


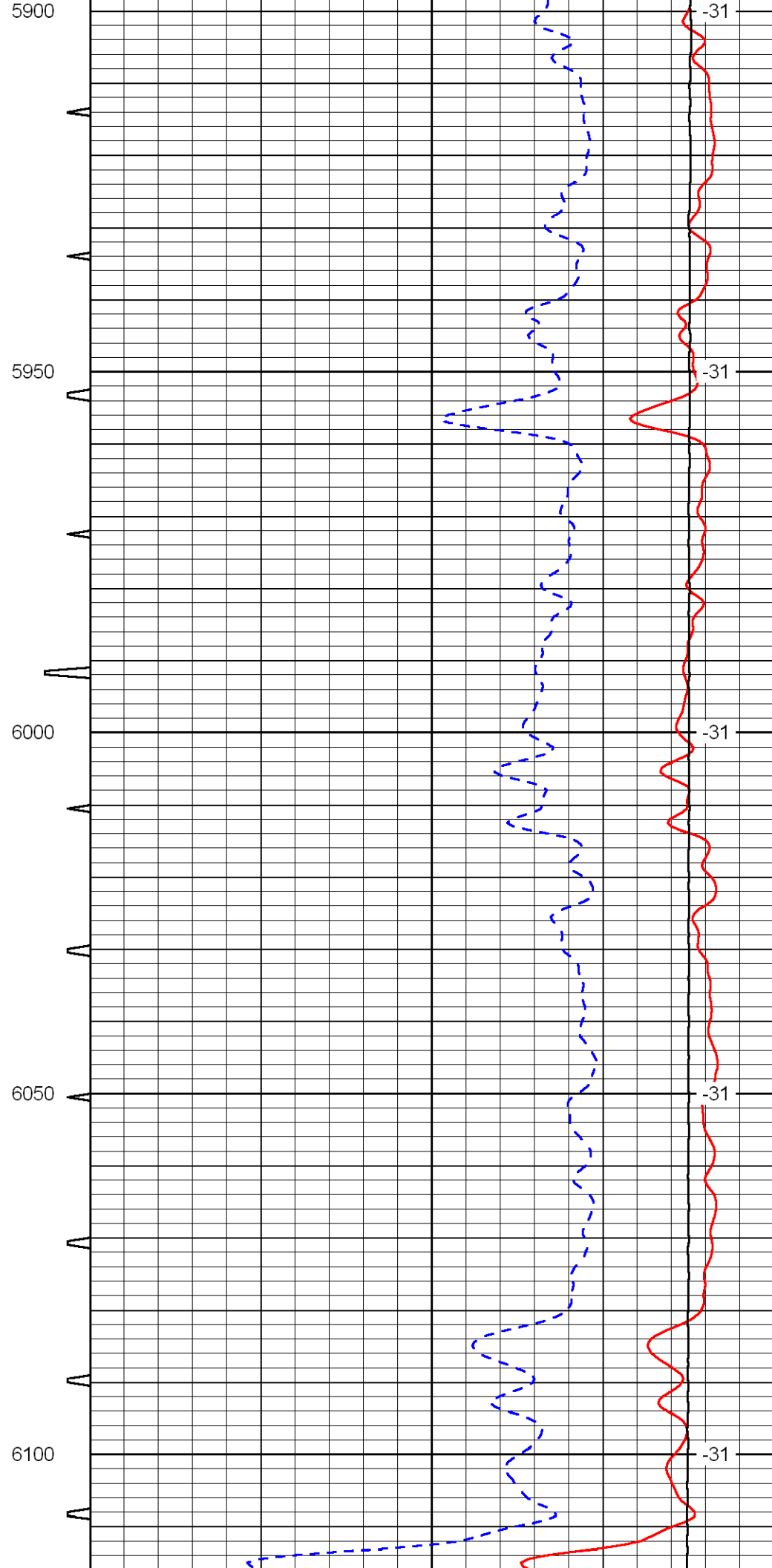
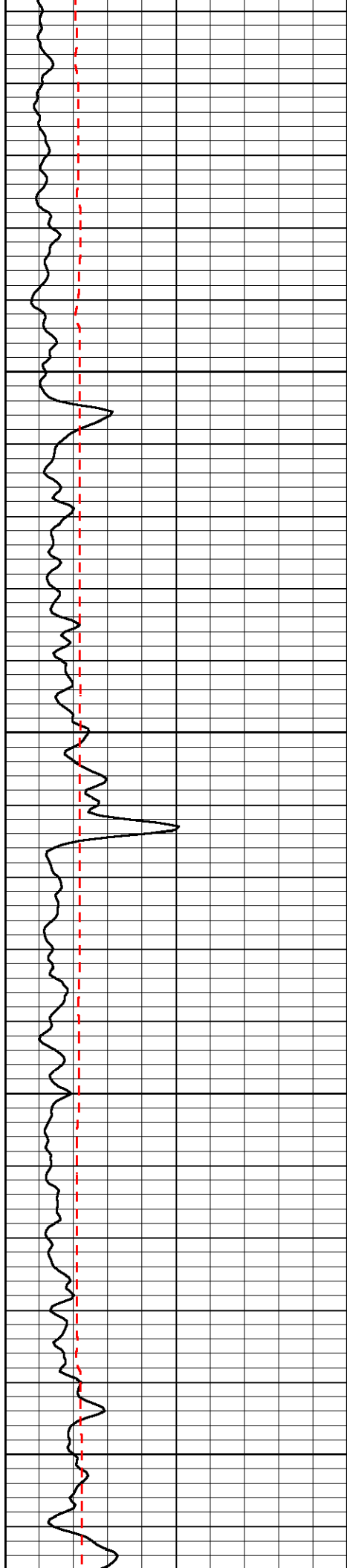


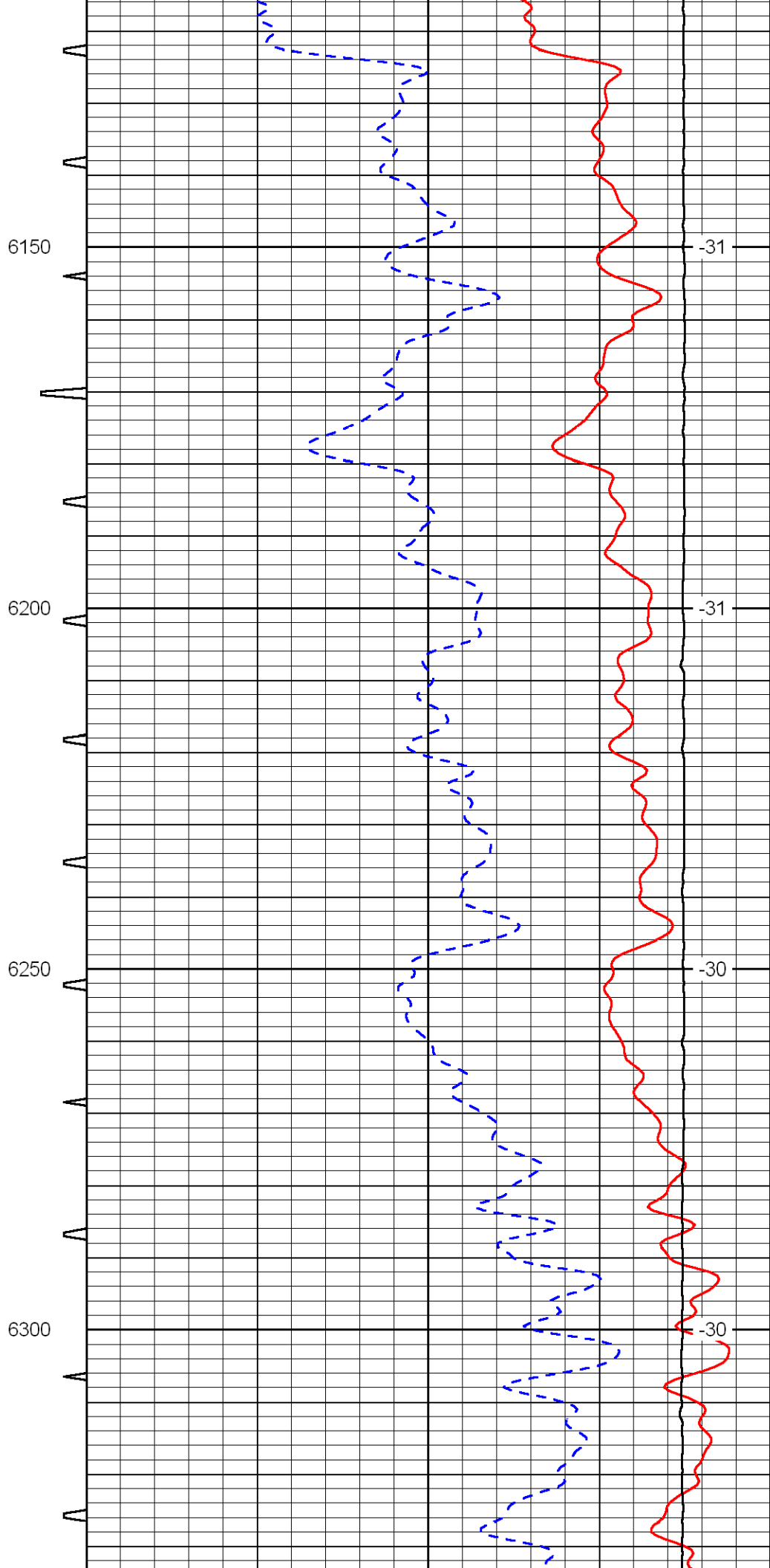
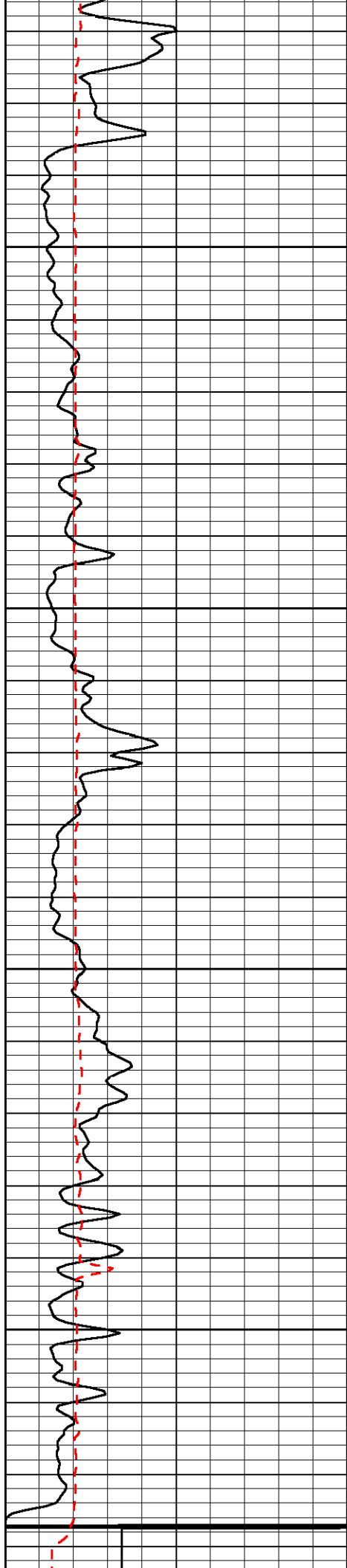


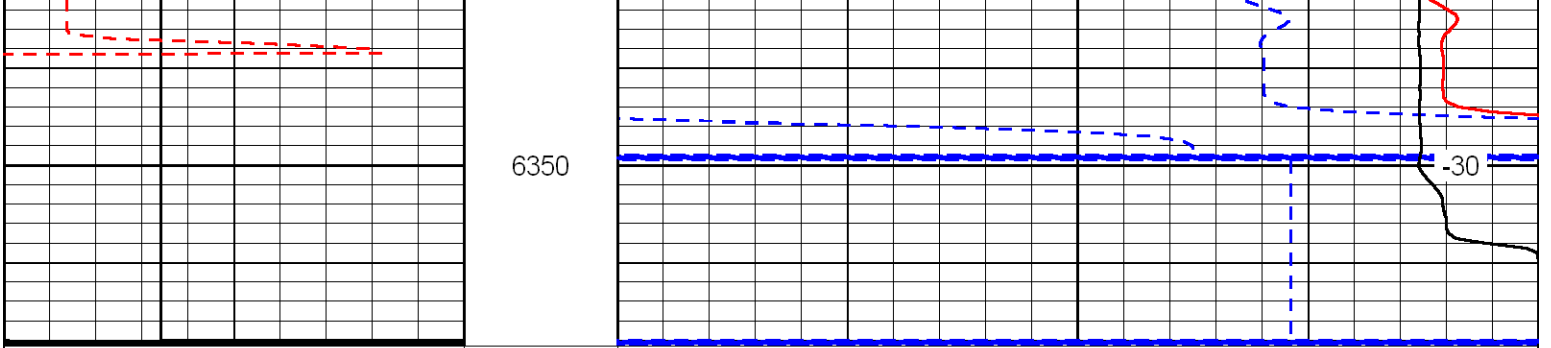












0	Gamma Ray	150	Sonic Int	140	Delta Time (usec/ft) (usec/ft)	40
150	Gamma Ray	300	5 (msec) 0	30	SPOR (pu)	-10
6	Caliper (in)	16		15000	LTEN (lb) (lb)	0

LSPD
(ft/min)