



Microresistivity Log

DIGITAL LOG (785) 625-3858

API No.	15-069-20,322-00-00		
Company	Falcon Exploration, Inc.		
Well	Williams No. 1-13		
Field	Wildcat		
County	Gray	State	Kansas
Location	1230' FSL & 730' FEL		
Sec: 13	Twp: 28 S	Rge: 30 W	
Permanent Datum	Ground Level	Elevation 2800	Other Services CNL/CDL DIL/BHCS
Log Measured From	Kelly Bushing	10 Ft. Above Perm. Datum	
Drilling Measured From	Froth Kelly Bushing		

Date	02/15/2010	
Run Number	Two	
Depth Driller	6344	
Depth Logger	6251	
Bottom Logged Interval	6250	
Top Log Interval	2500	
Casing Driller	8.625 @ 1813	
Casing Logger	1820	
Bit Size	7.875	
Type Fluid in Hole	Chemical	
Salinity, ppm CL	1.500	
Density / Viscosity	9.2	59
pH / Fluid Loss	9.5	7.2
Source of Sample	Flowline	
Rm @ Meas. Temp	.46 @	65
Rmf @ Meas. Temp	34 @	65
Rmc @ Meas. Temp	.62 @	65
Source of Rmf / Rmc	Charts	
Rm @ BHT	.21 @	141
Operating Rig Time	5 Hours	
Max Rec. Temp. F	141	
Equipment Number	10	
Location	Hays	
Recorded By	J. Wellbrock	J. Schuler
Witnessed By	K. Reavis	

<<< Fold Here >>>

All interpretations are opinions based on inferences from electrical or other measurements and we cannot and do not guarantee the accuracy or correctness of any interpretation, and we shall not, except in the case of gross or willful negligence on our part, be liable or responsible for any loss, costs, damages, or expenses incurred or sustained by anyone resulting from any interpretation made by any of our officers, agents or employees. These interpretations are also subject to our general terms and conditions set out in our current Price Schedule.

Comments

Thank you for using Log-Tech, Inc.
(785) 625-3858

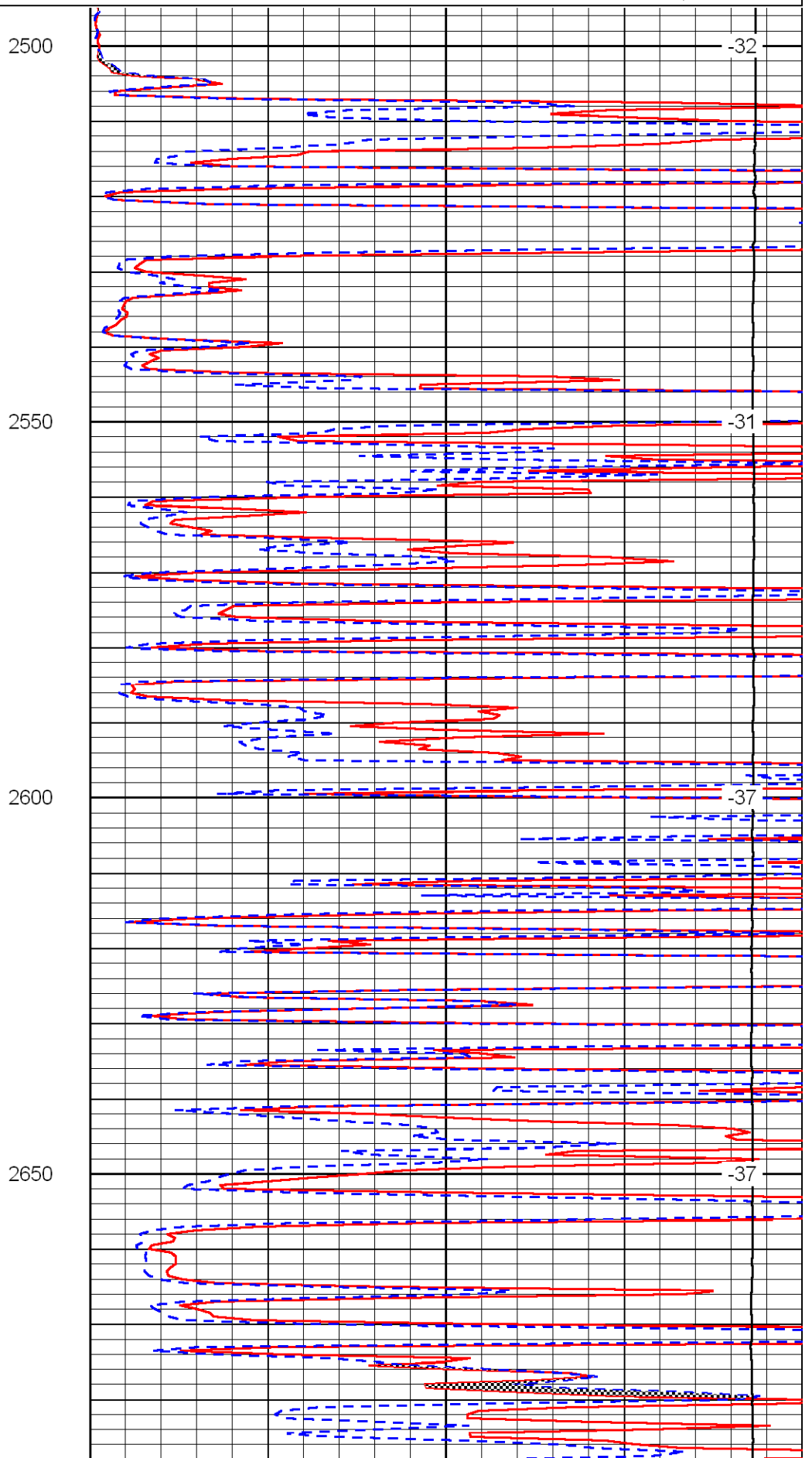
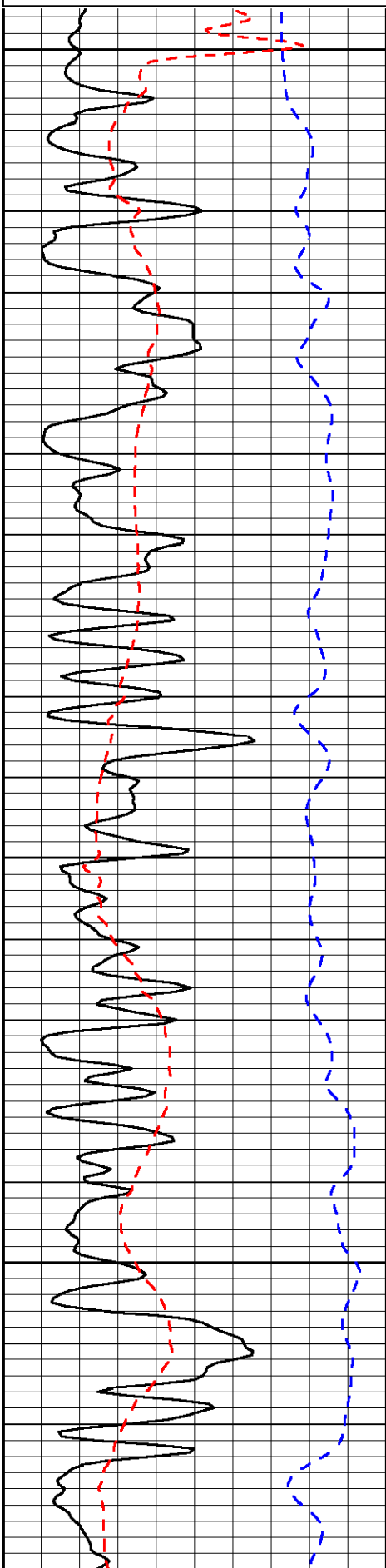
Montezuma to Ingals Black Top, 3/4 N, 5 W on BB Road, 3/4 N, W Into

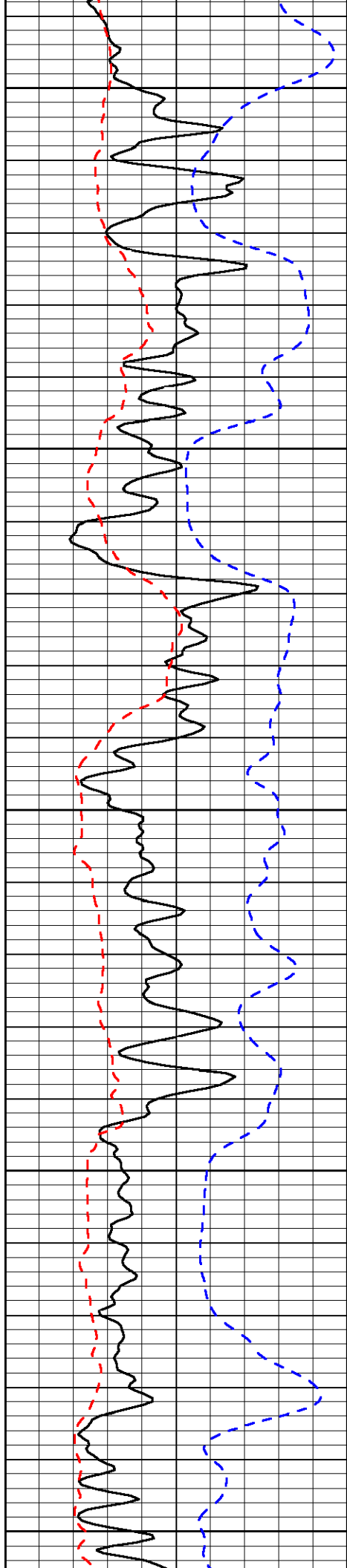
Database File: c:\warrior\data\falcon_williams #1-13\falhd.db
 Dataset Pathname: dil/fal2in
 Presentation Format: micro
 Dataset Creation: Mon Feb 15 18:59:11 2010
 Charted by: Depth in Feet scaled 1:240

0	Gamma Ray	150
6	Micro Log Caliper (in)	16
-200	SP (MV)	0

0	Micro Inverse 1 X 1 (Ohm-m)	40
0	Micro Normal 2" (Ohm-m)	40
15000	Line Weight (lb)	0

LSPD
(ft/min)





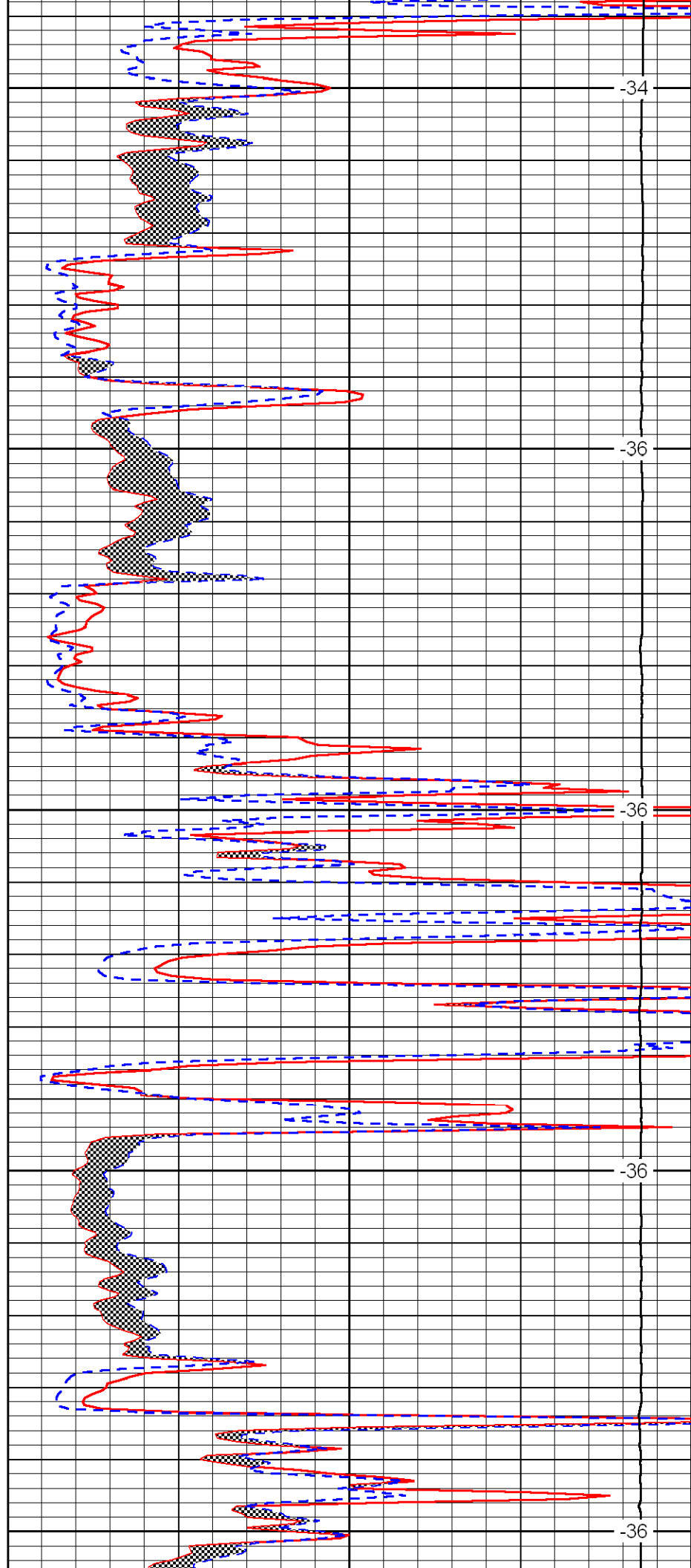
2700

2750

2800

2850

2900



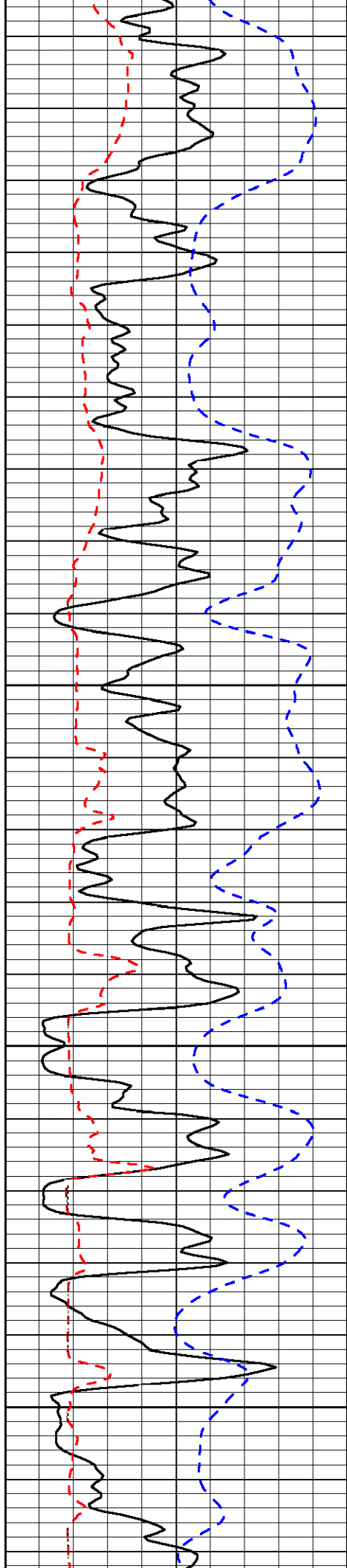
-34

-36

-36

-36

-36

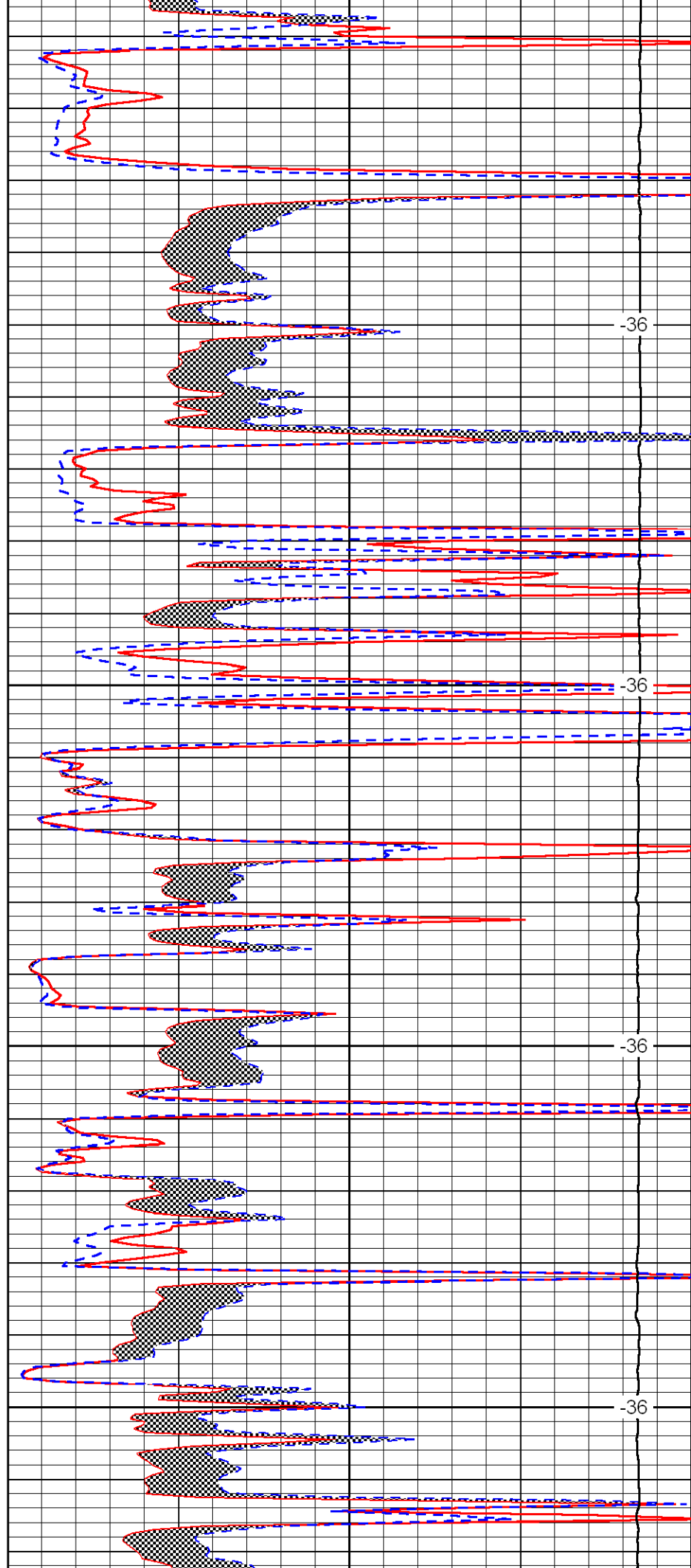


2950

3000

3050

3100

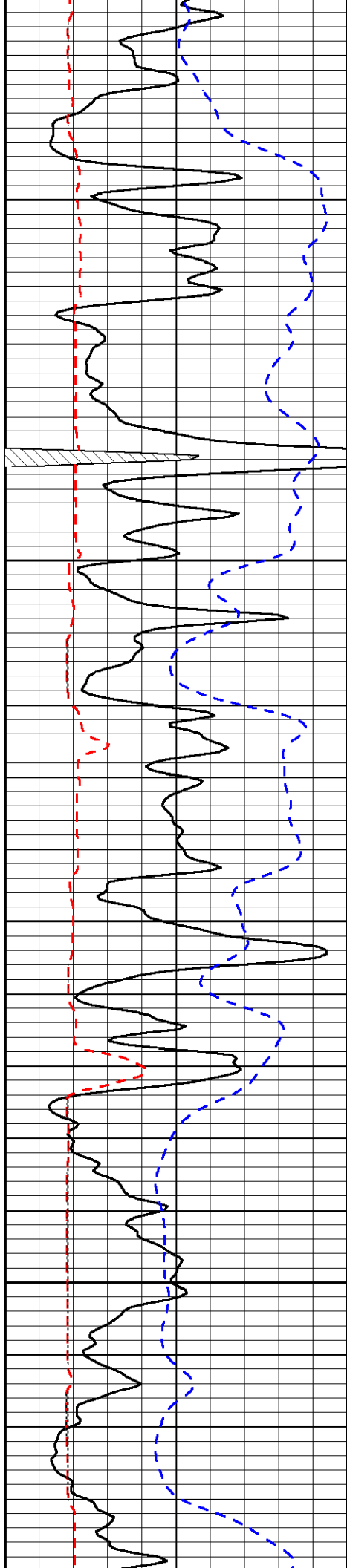


-36

-36

-36

-36

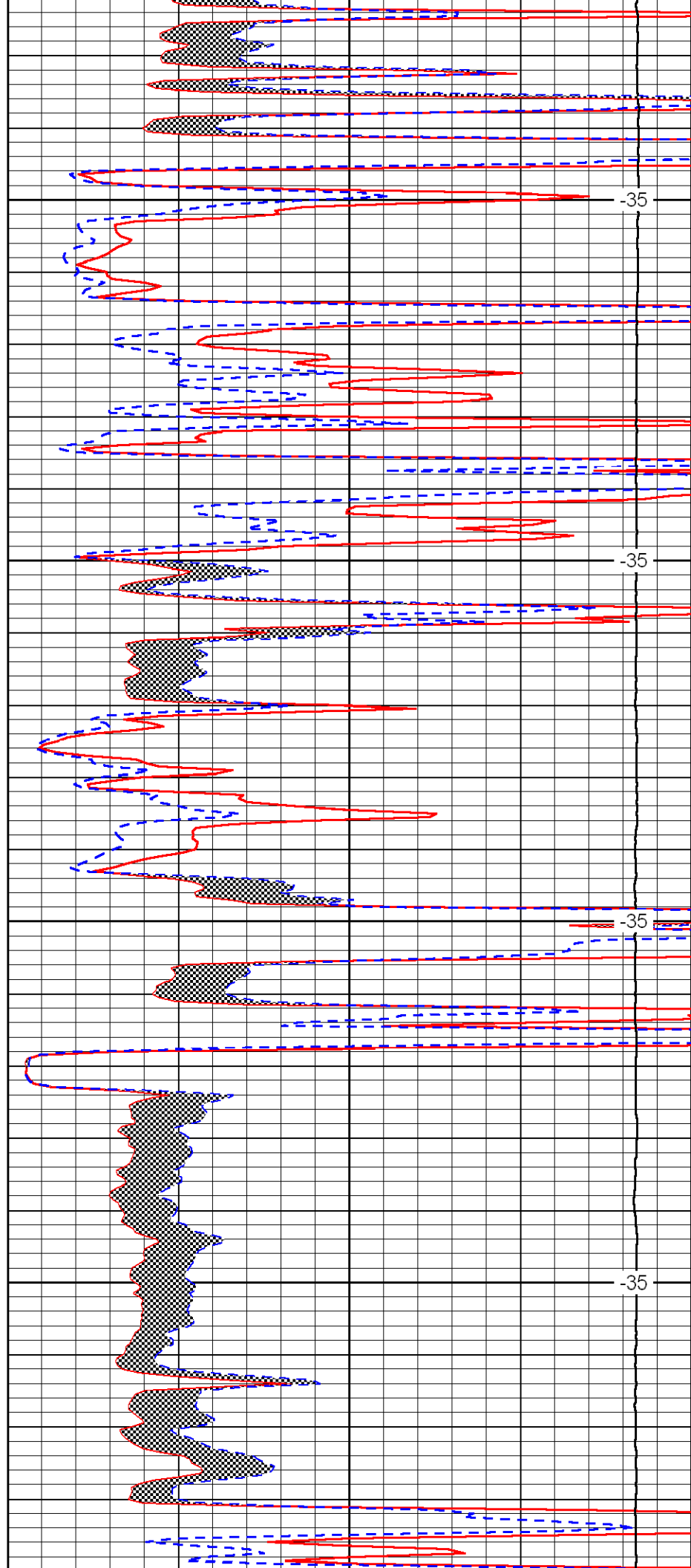


3150

3200

3250

3300

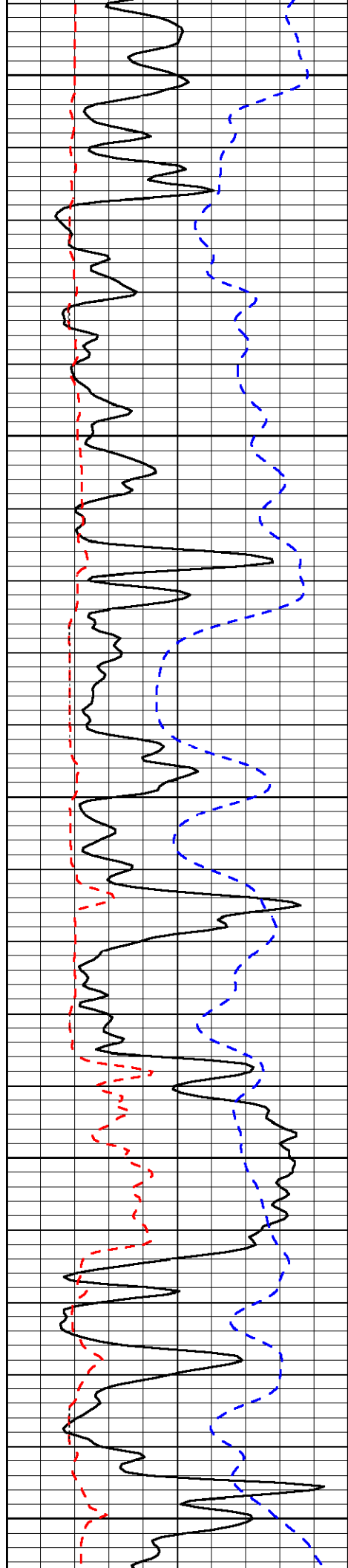


-35

-35

-35

-35



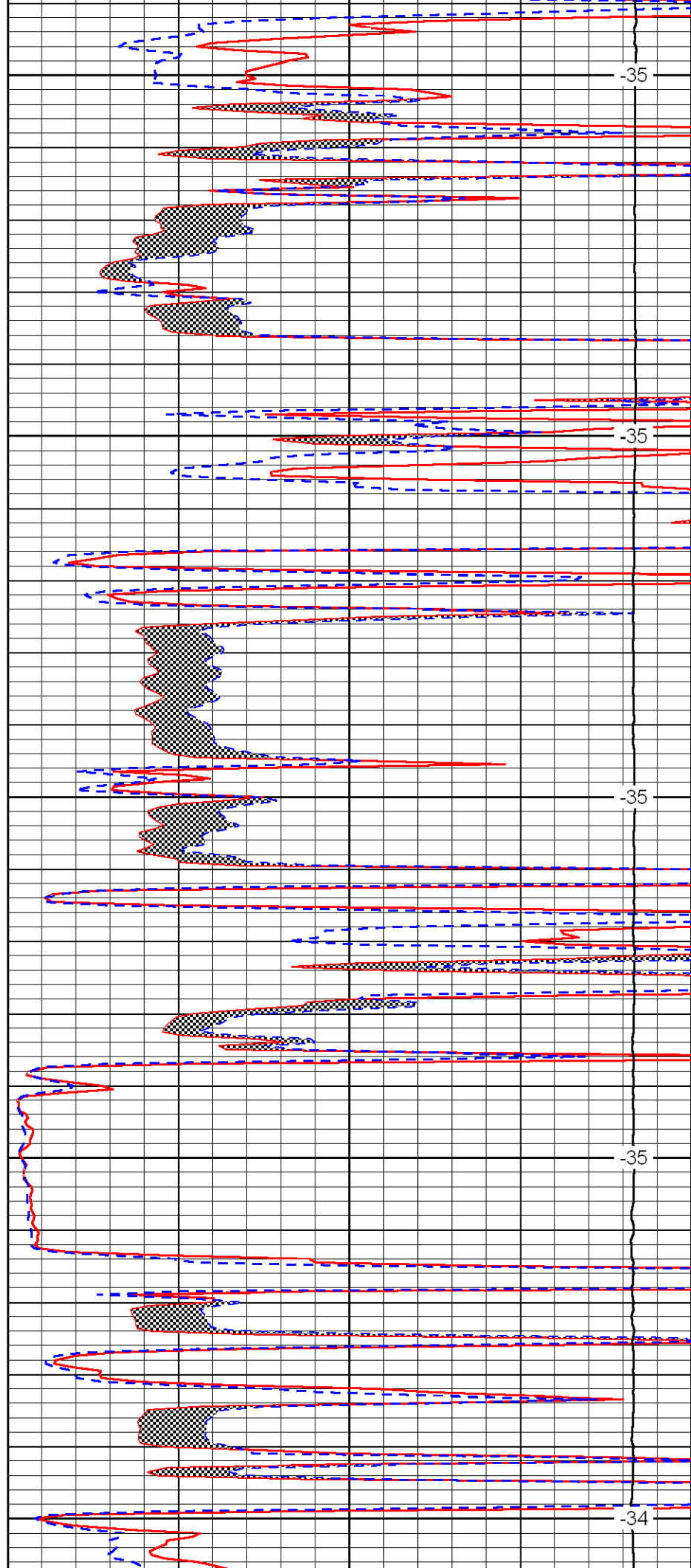
3350

3400

3450

3500

3550



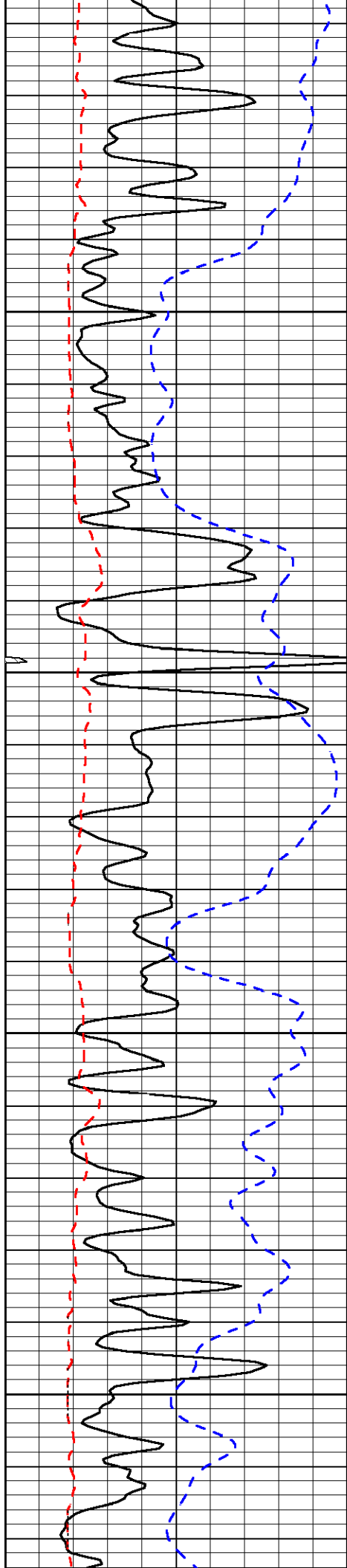
-35

-35

-35

-35

-34

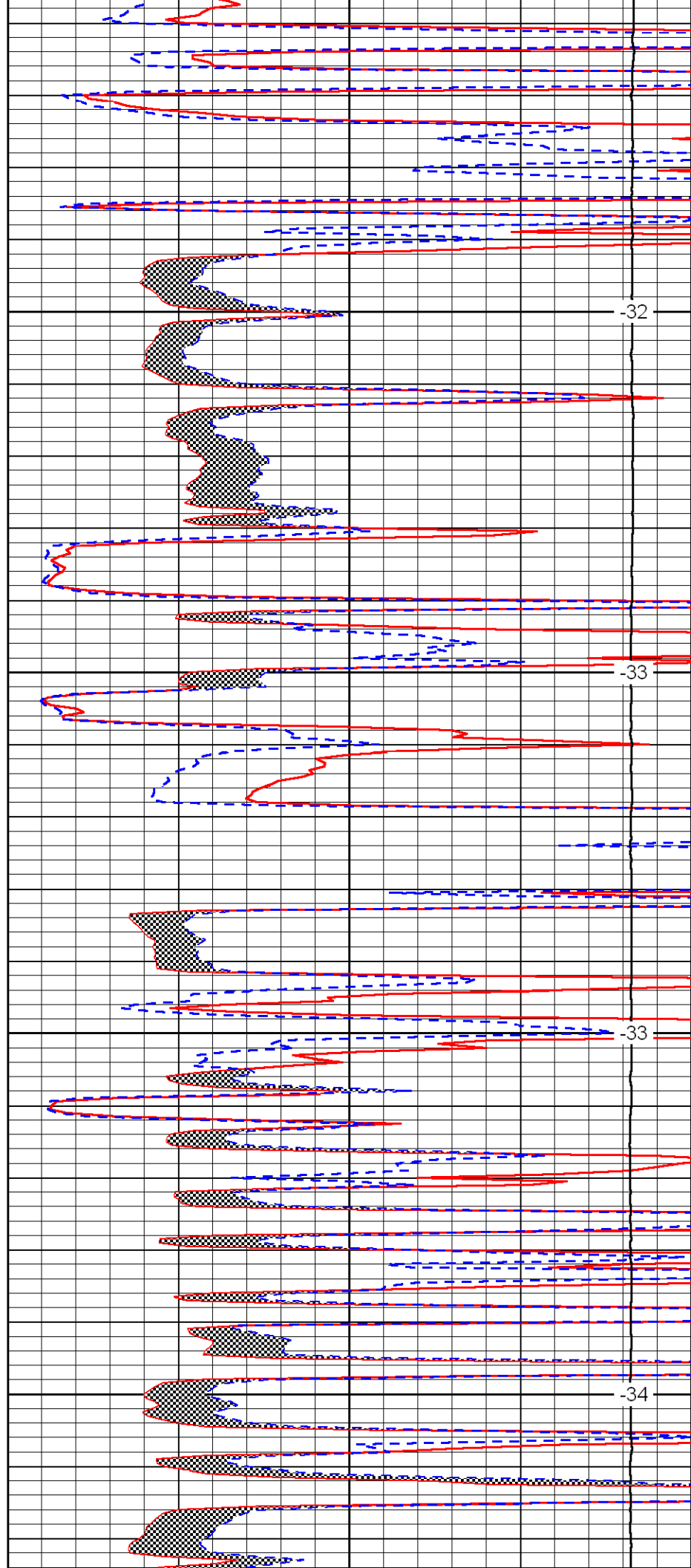


3600

3650

3700

3750

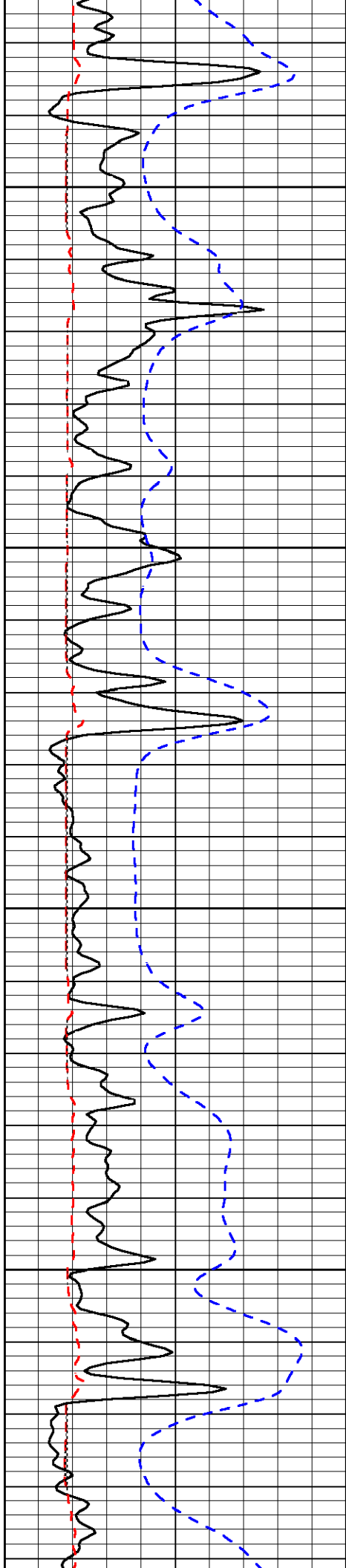


-32

-33

-33

-34

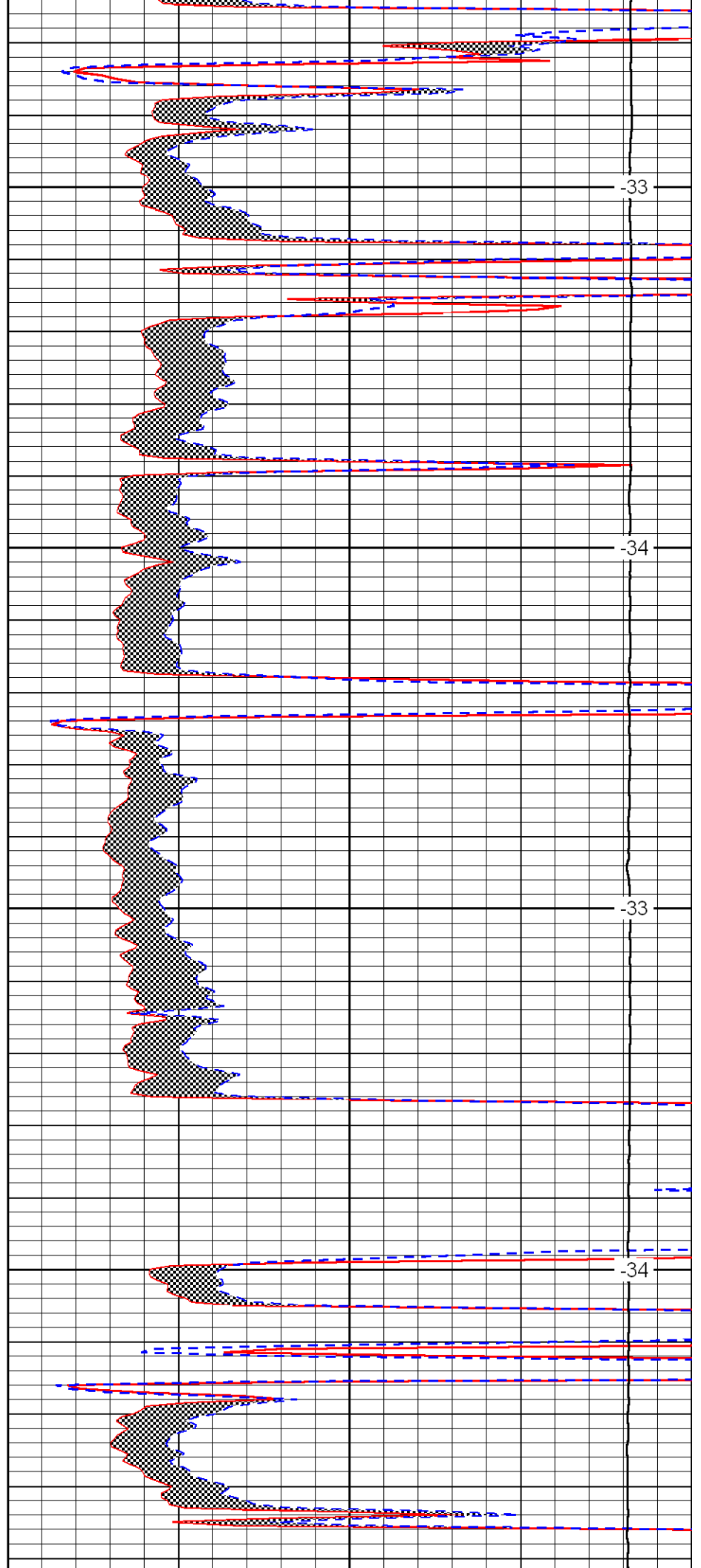


3800

3850

3900

3950

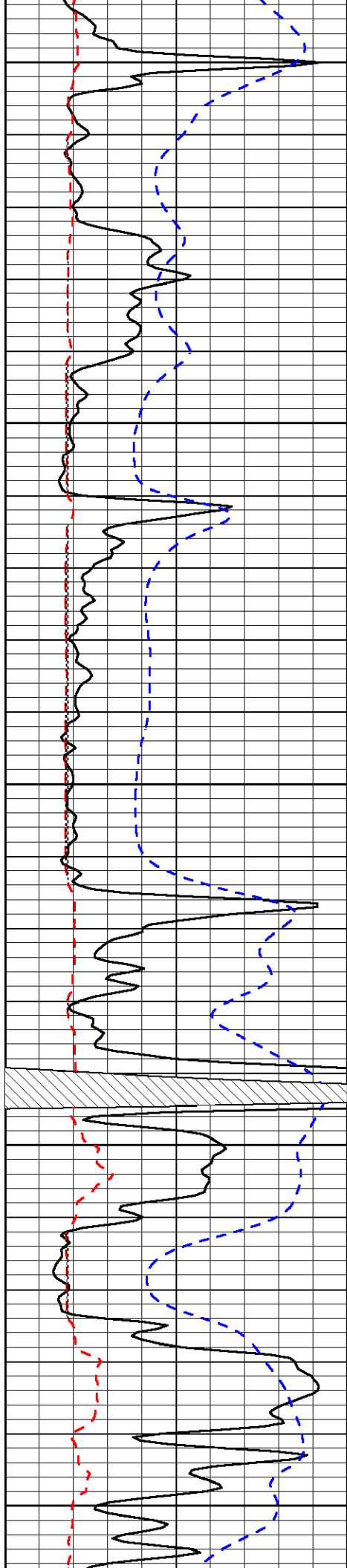


-33

-34

-33

-34



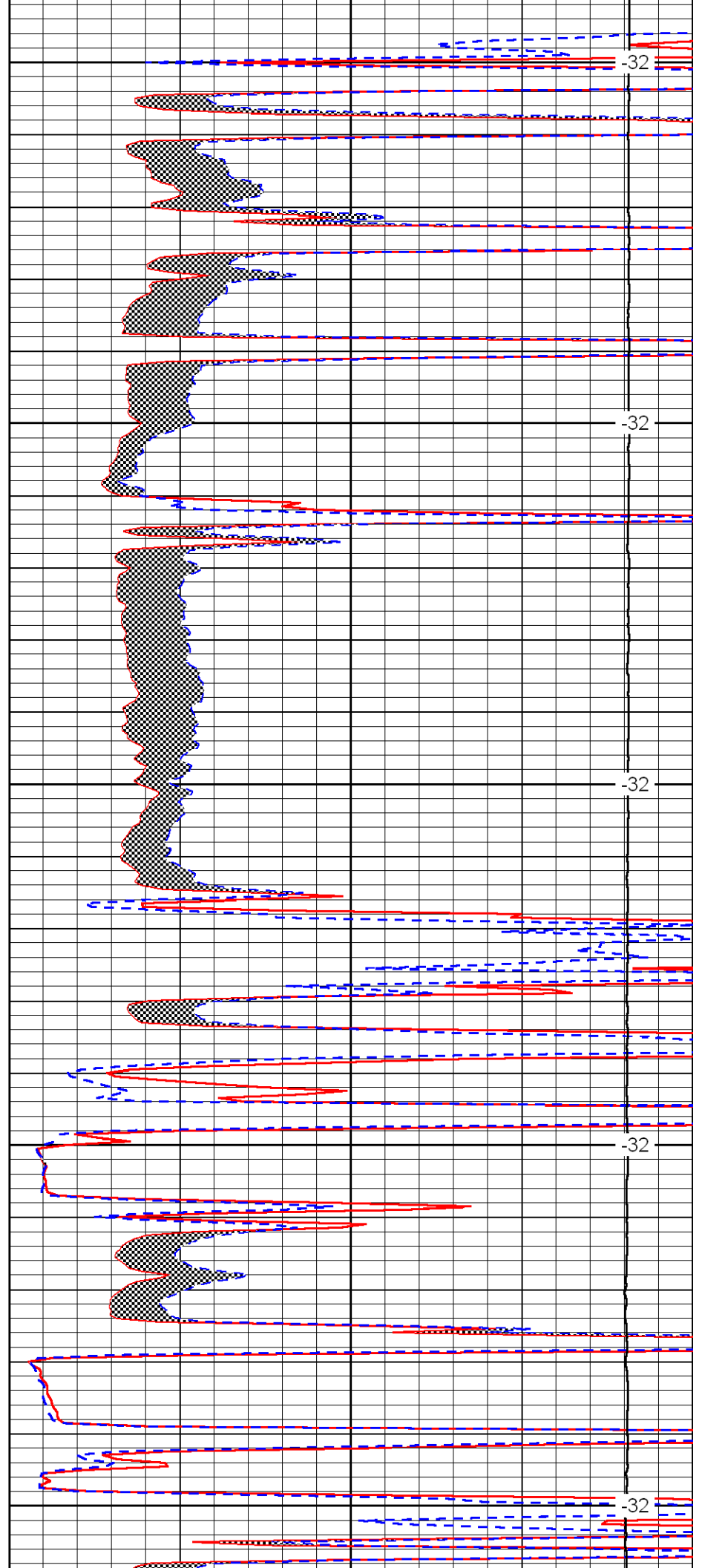
4000

4050

4100

4150

4200



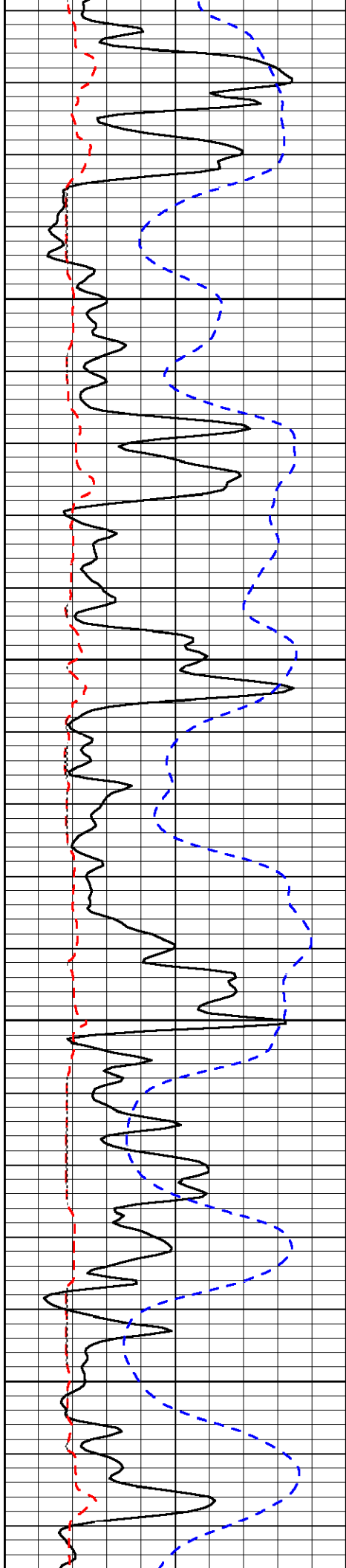
-32

-32

-32

-32

-32

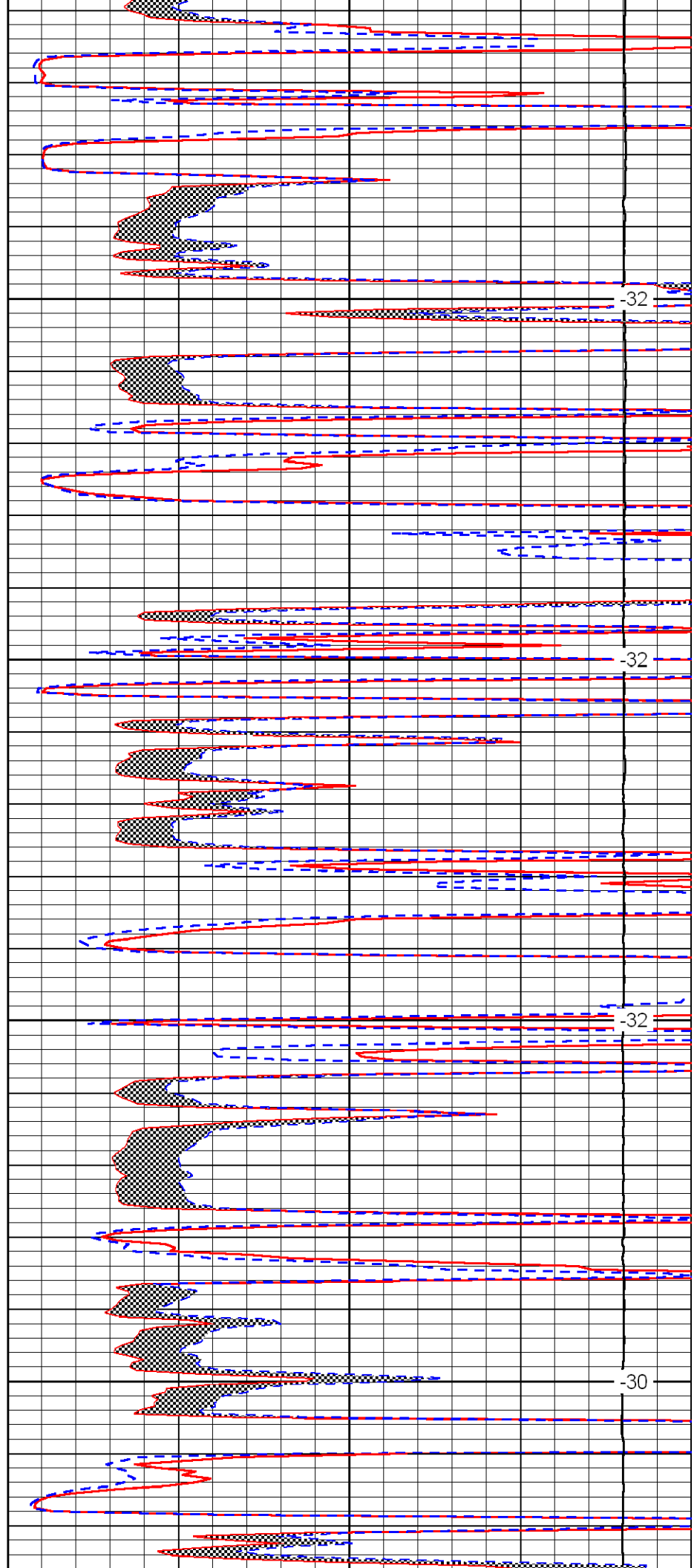


4250

4300

4350

4400

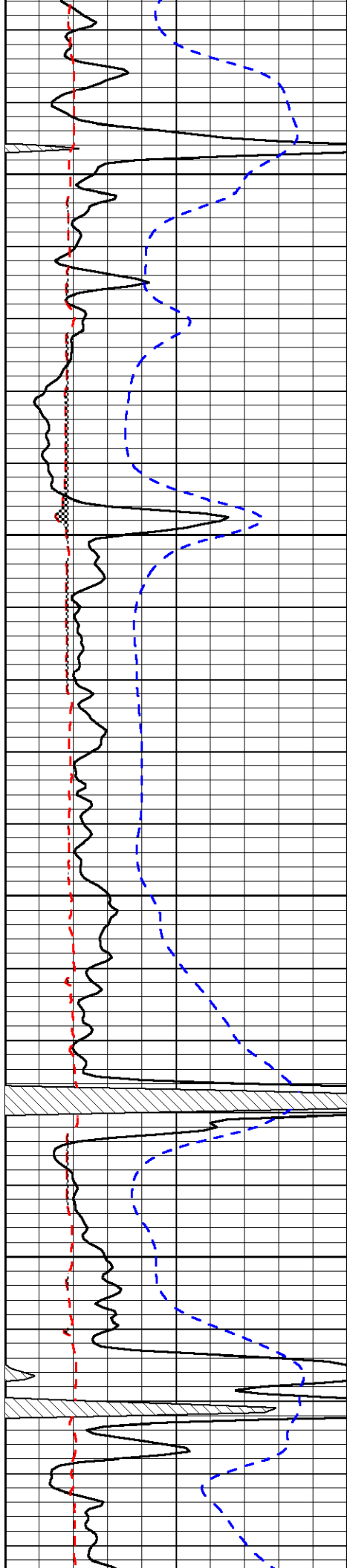


-32

-32

-32

-30

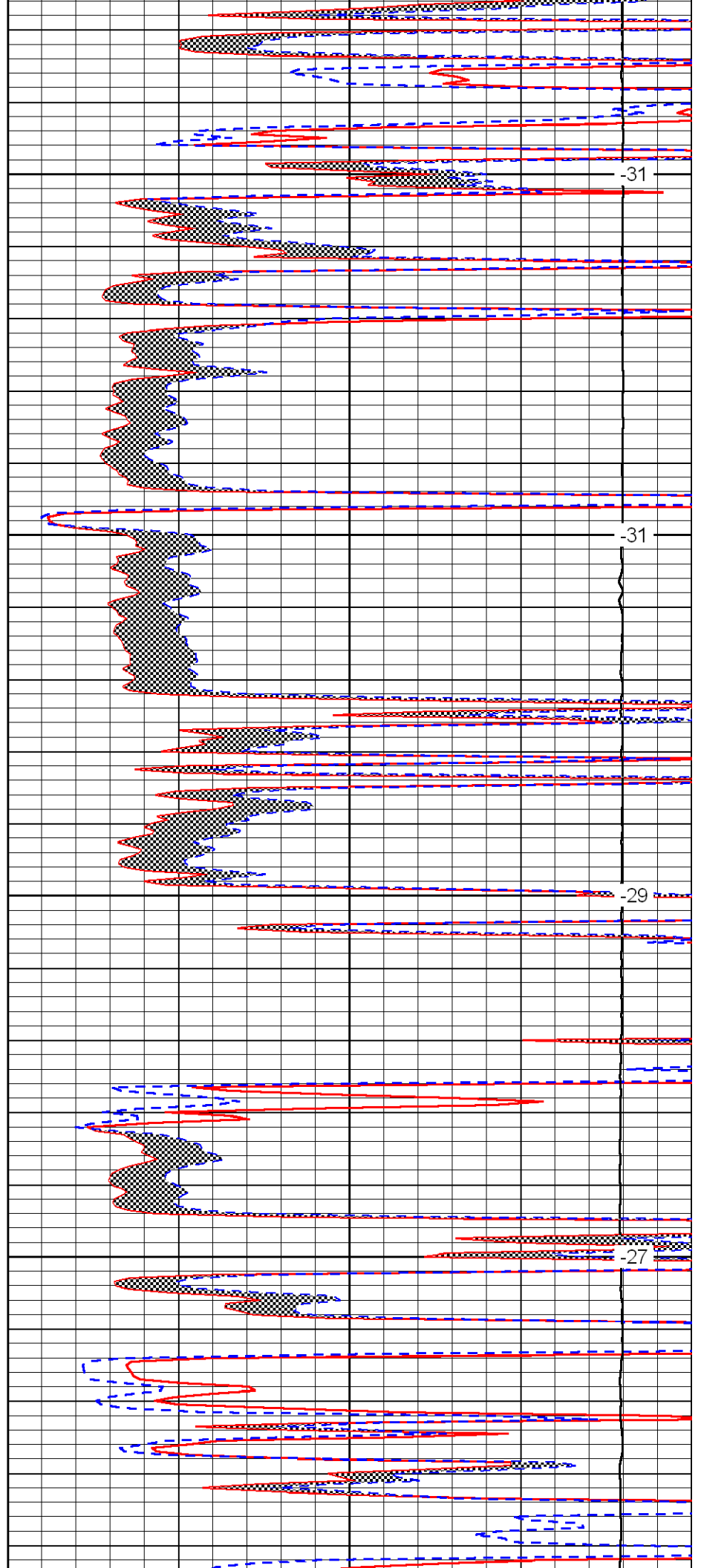


4450

4500

4550

4600

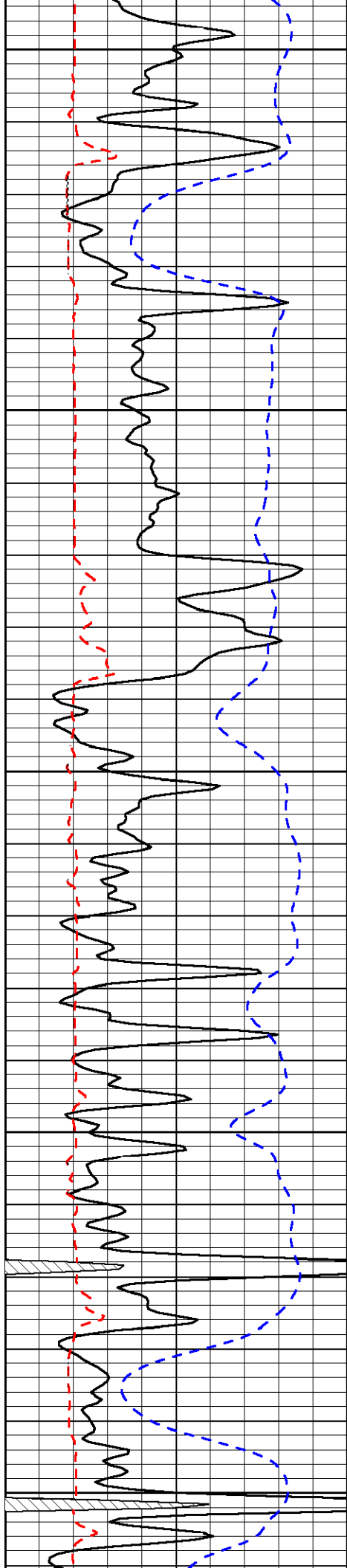


-31

-31

-29

-27



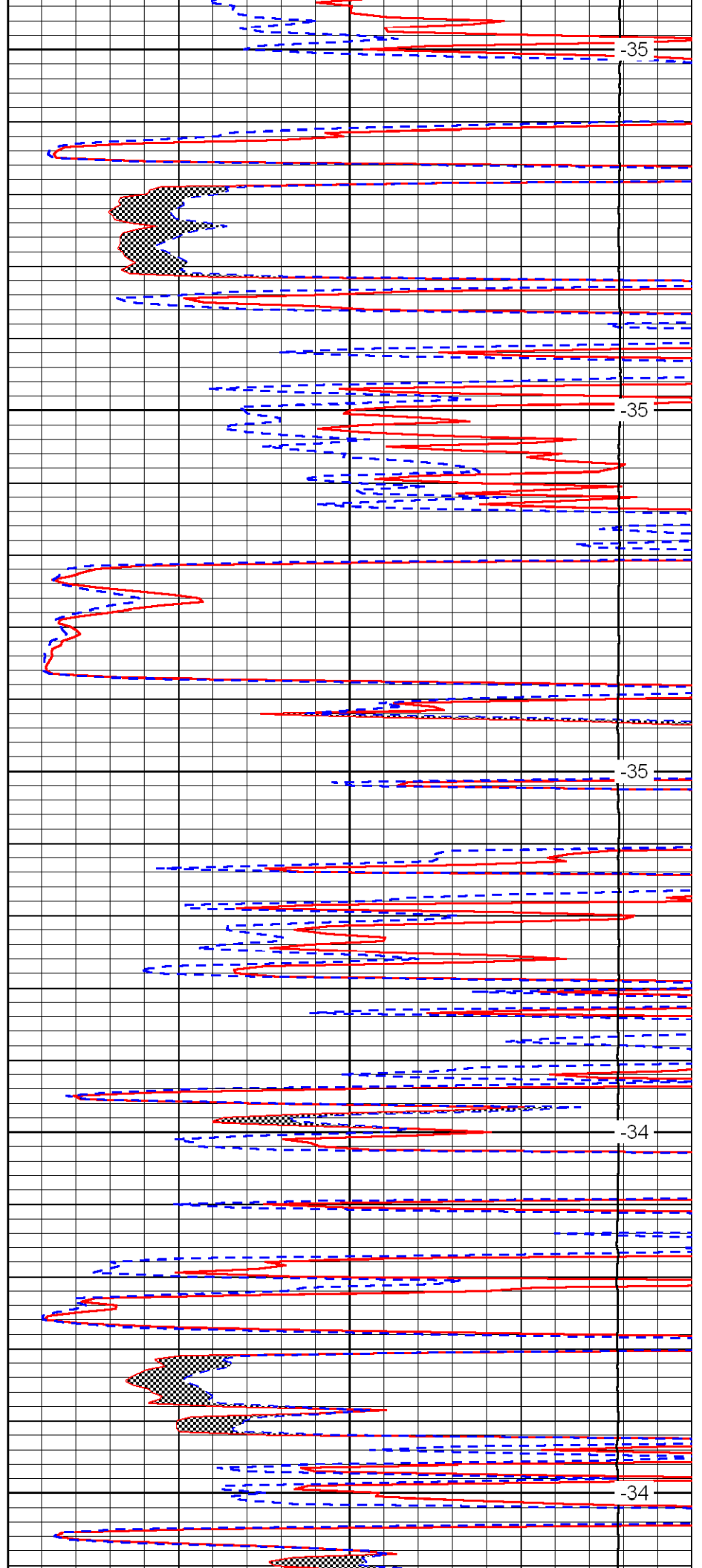
4650

4700

4750

4800

4850



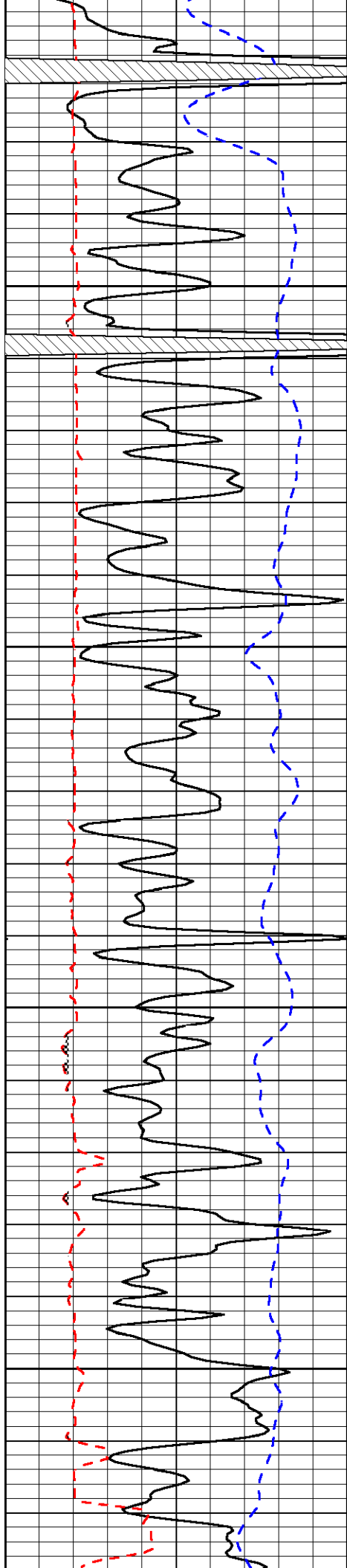
35

35

35

34

34

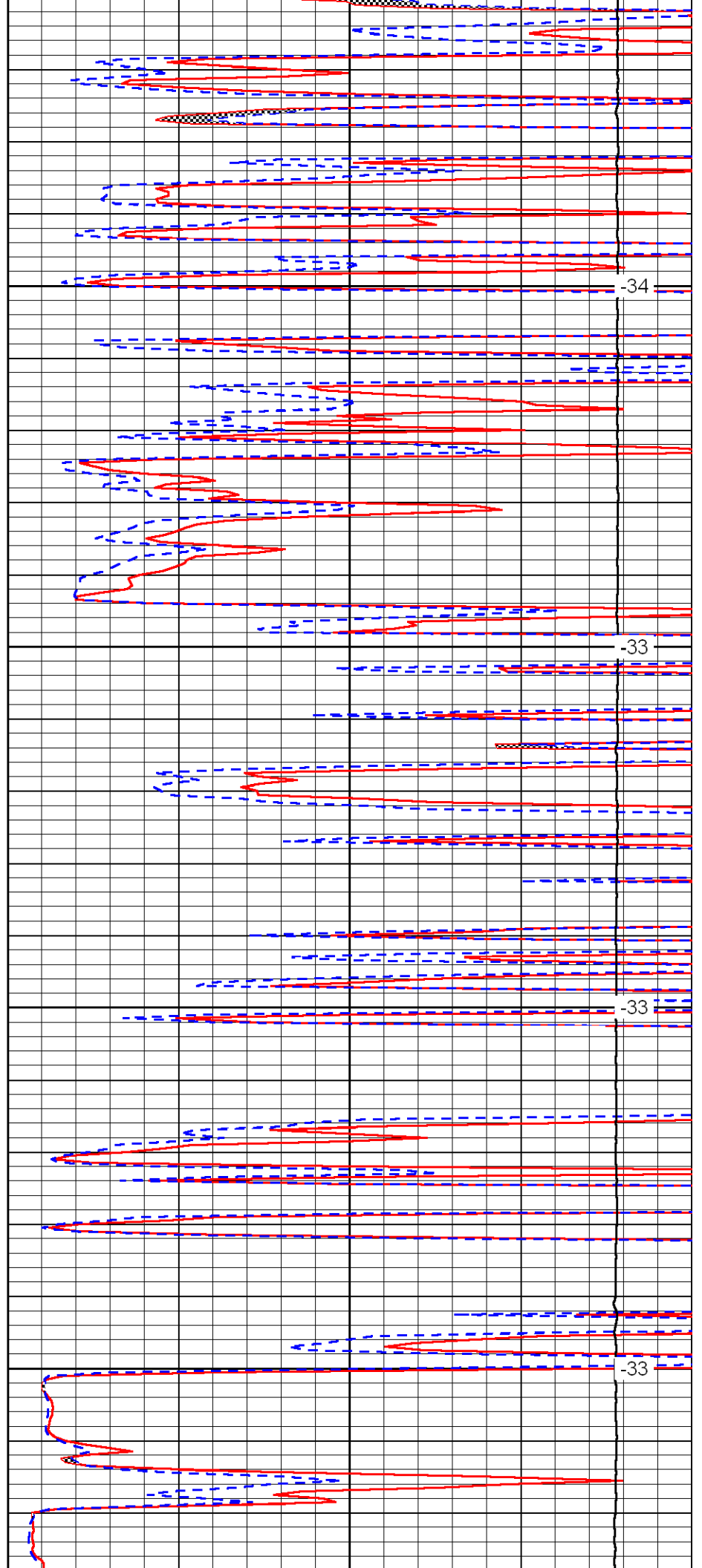


4900

4950

5000

5050

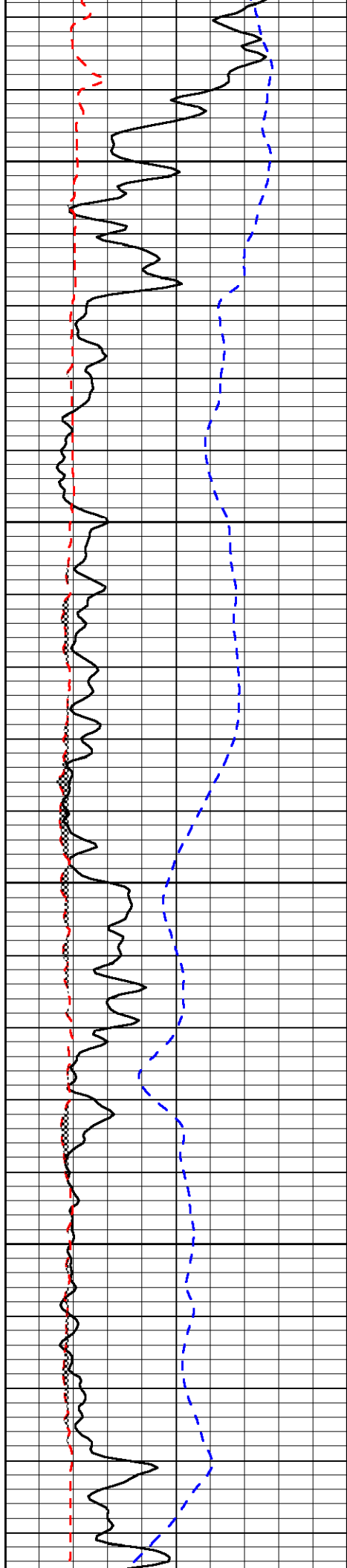


34

33

33

33

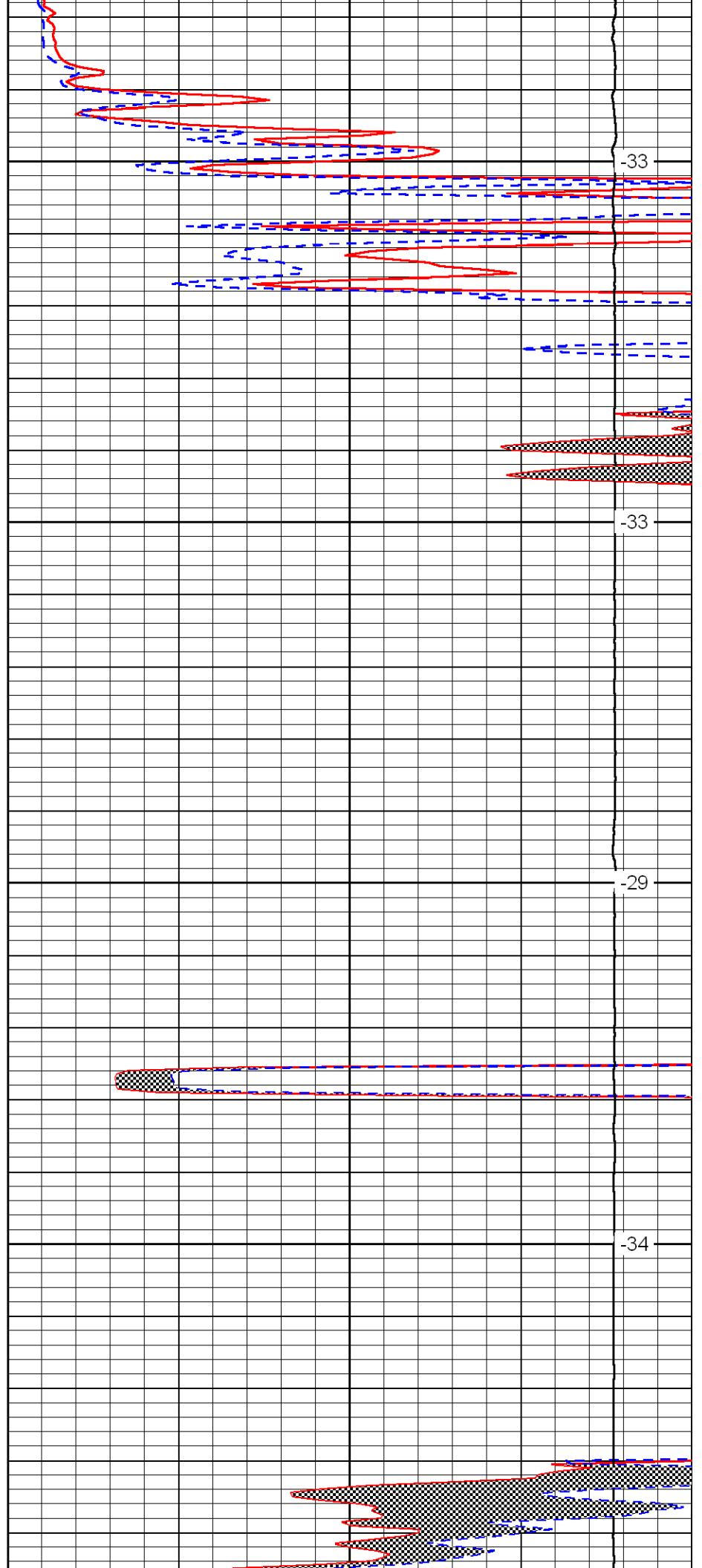


5100

5150

5200

5250

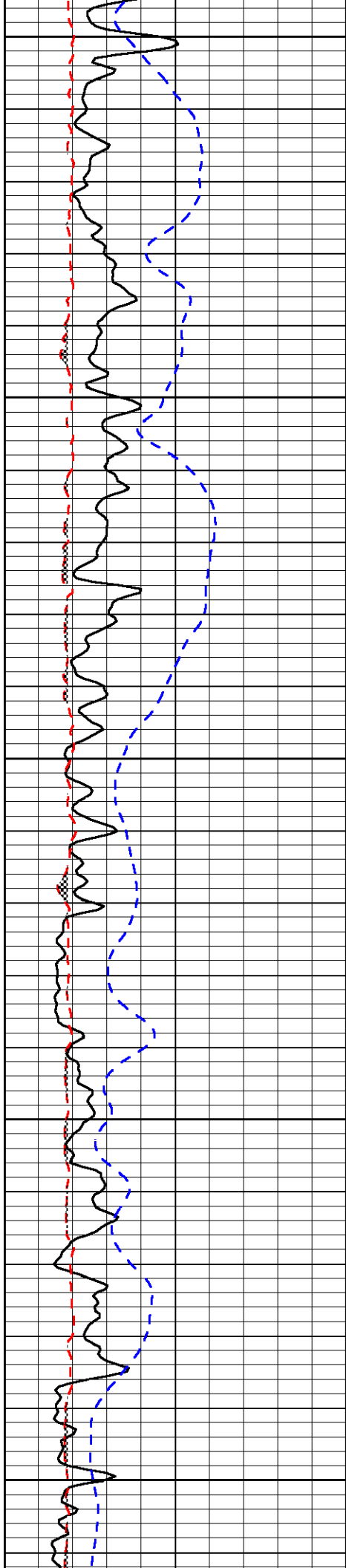


-33

-33

-29

-34



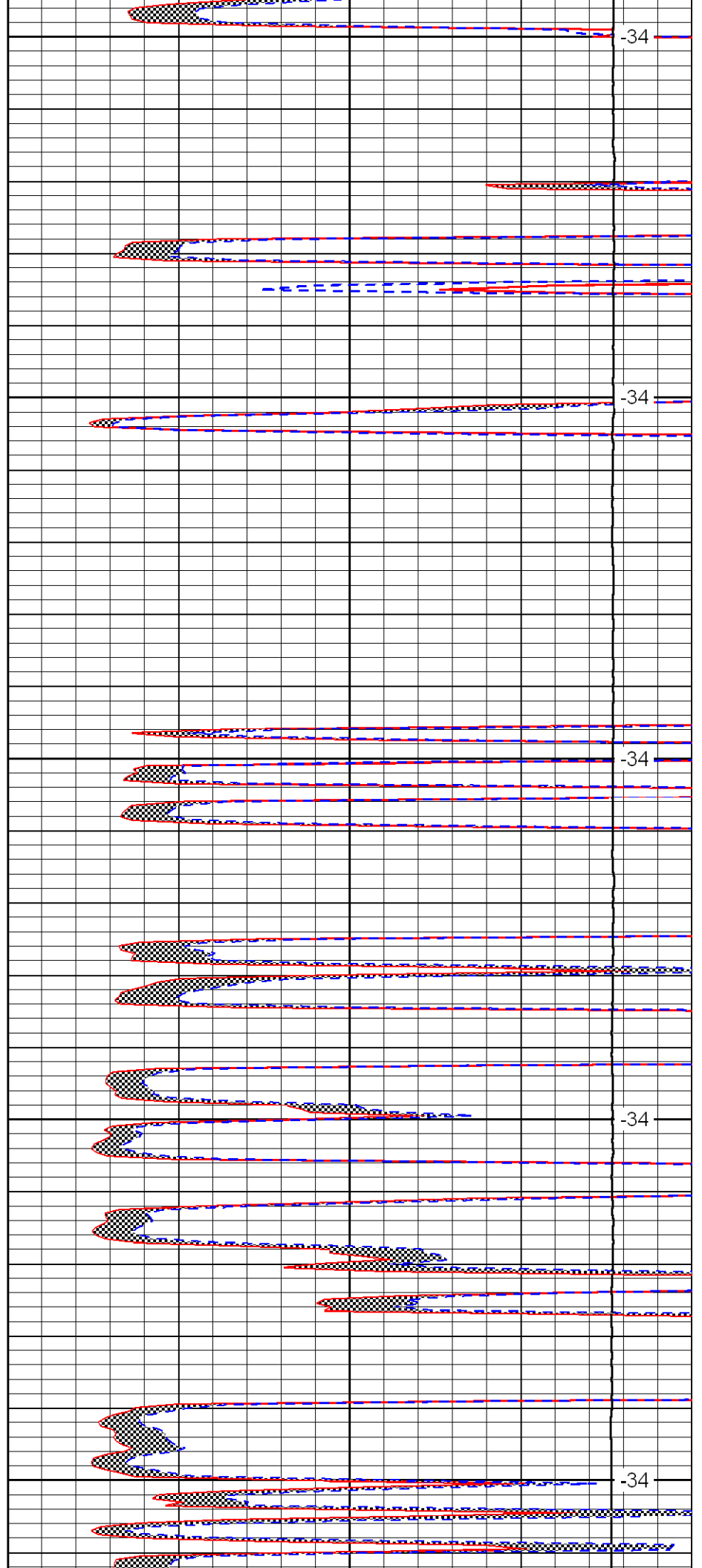
5300

5350

5400

5450

5500



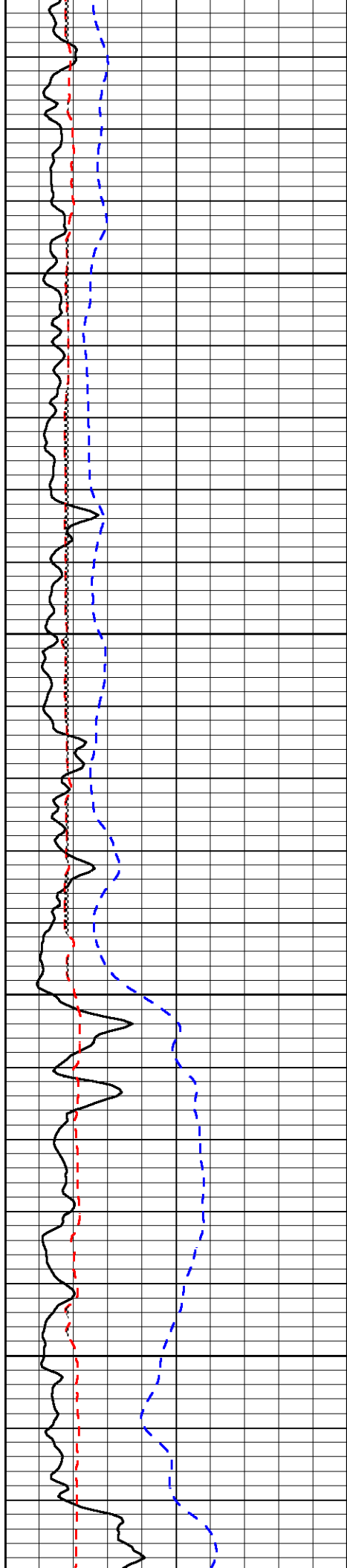
-34

-34

-34

-34

-34

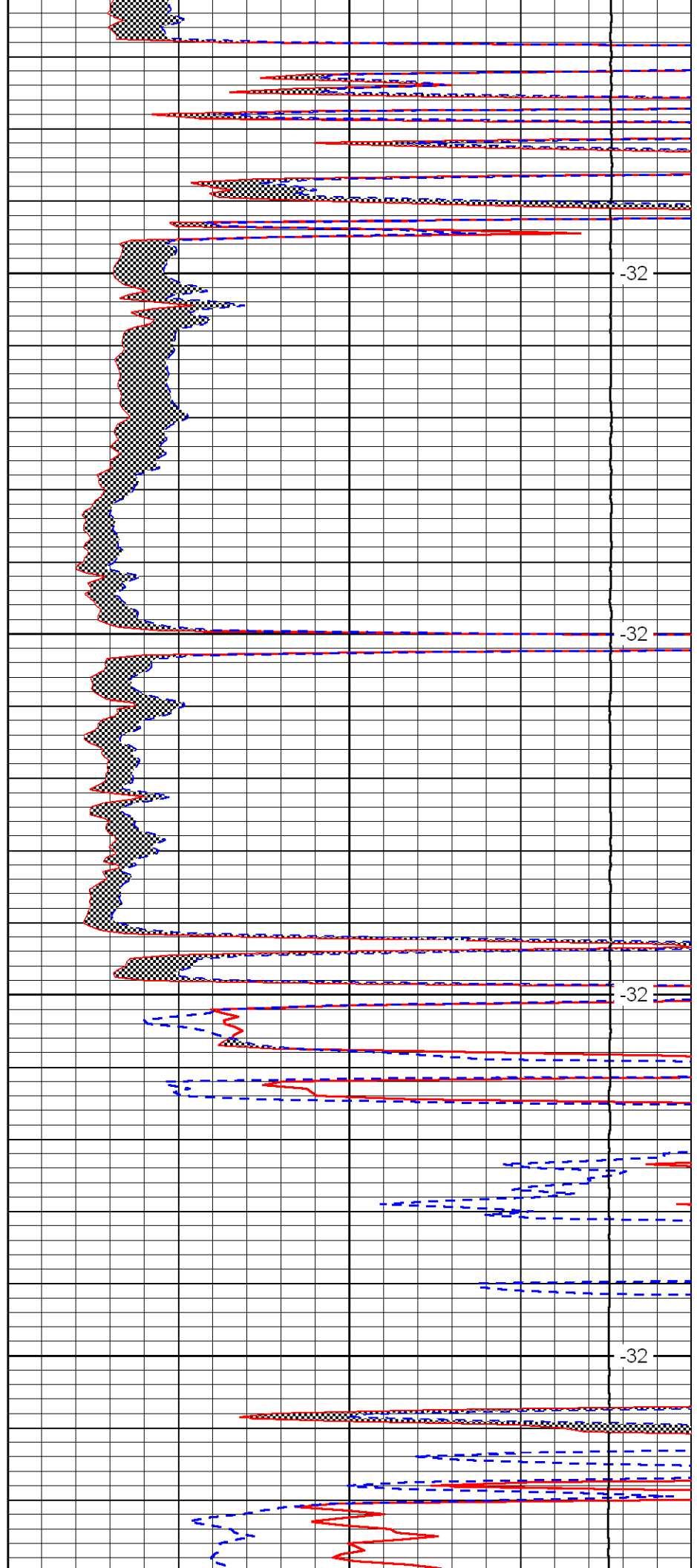


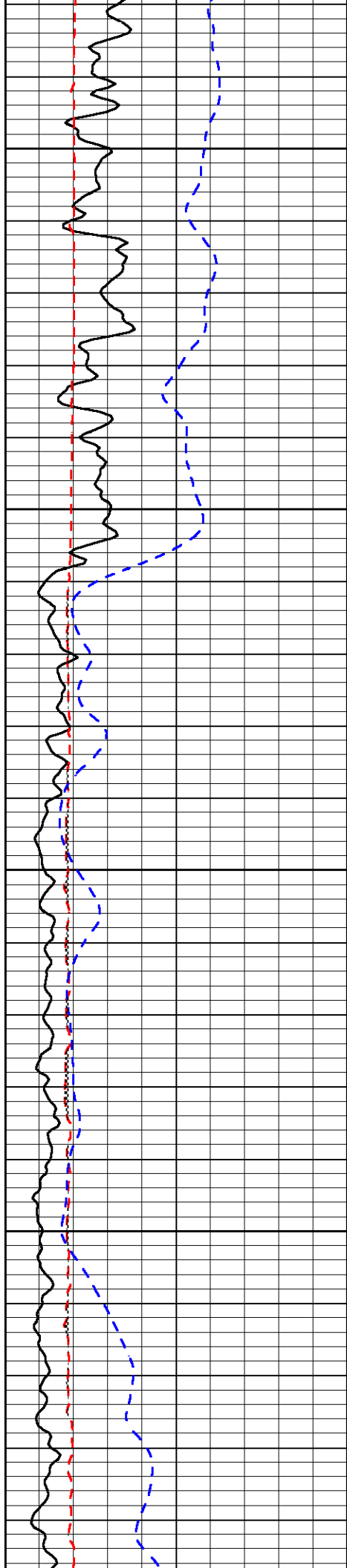
5550

5600

5650

5700



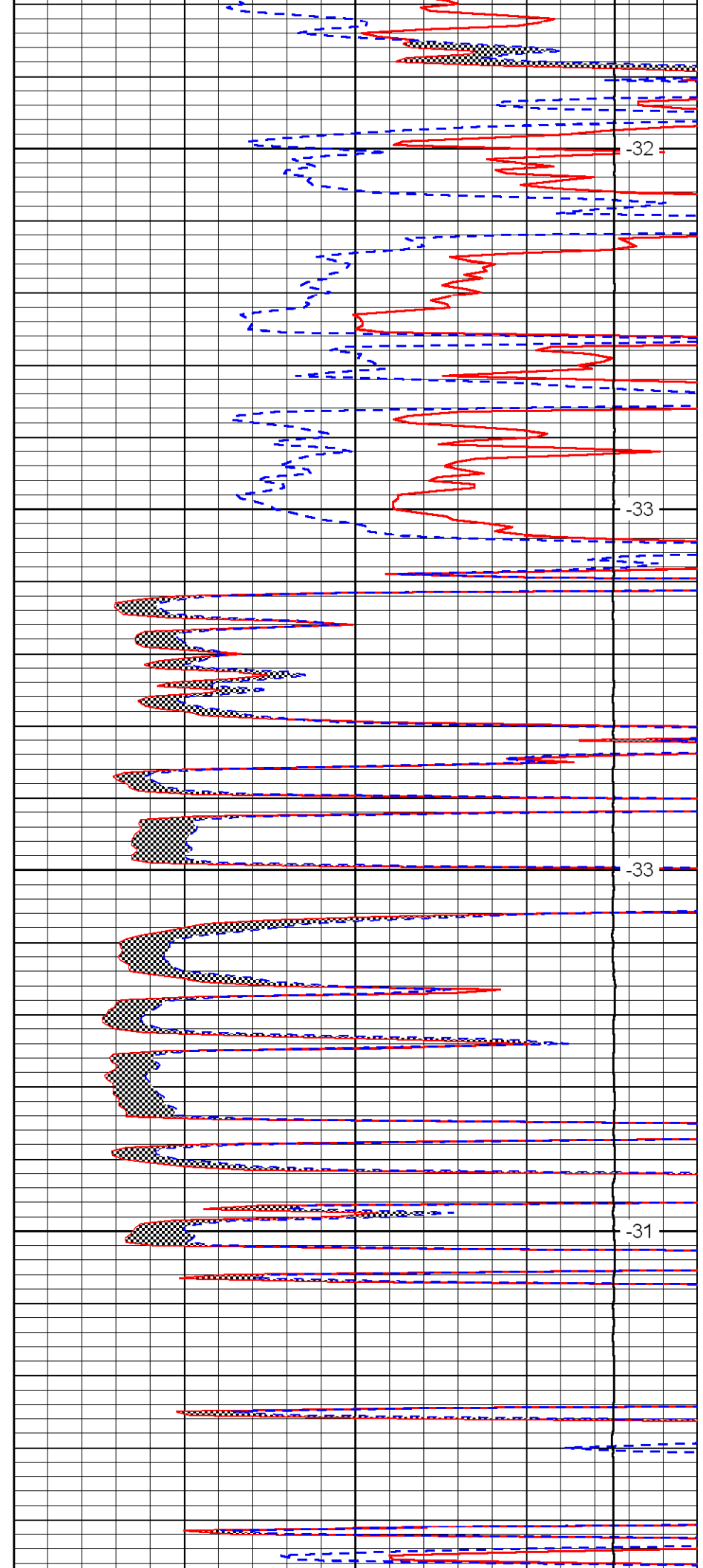


5750

5800

5850

5900

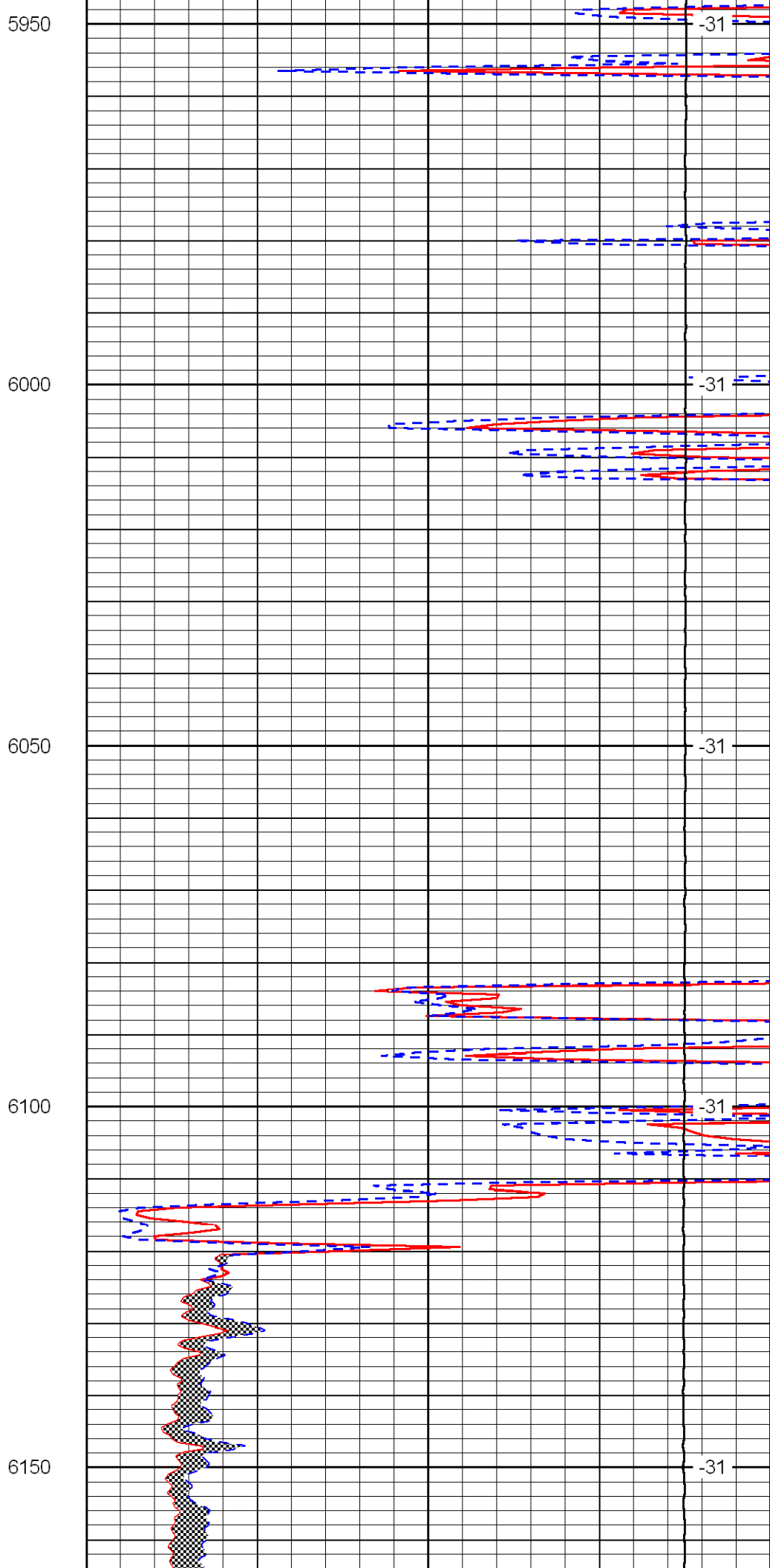
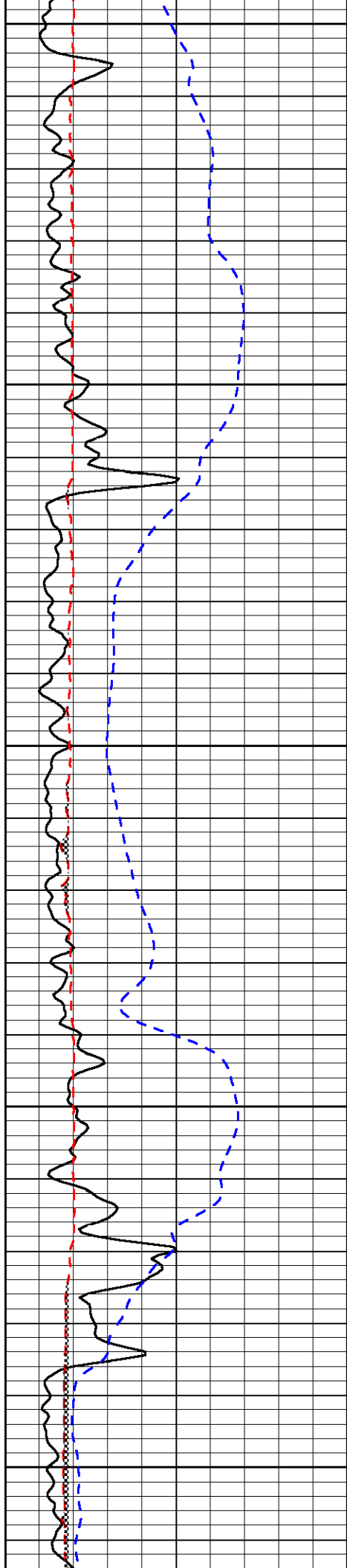


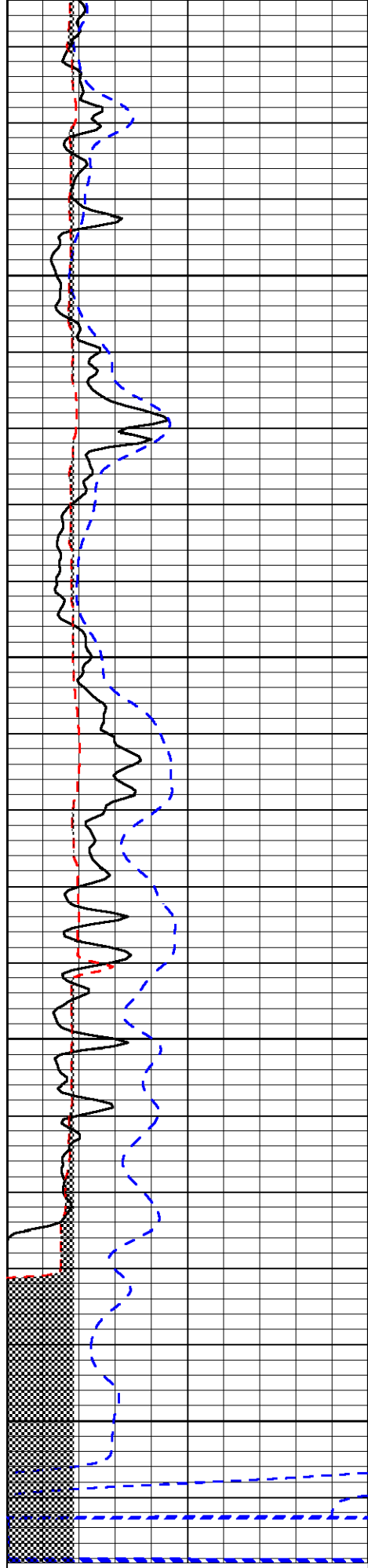
-32

-33

-33

-31



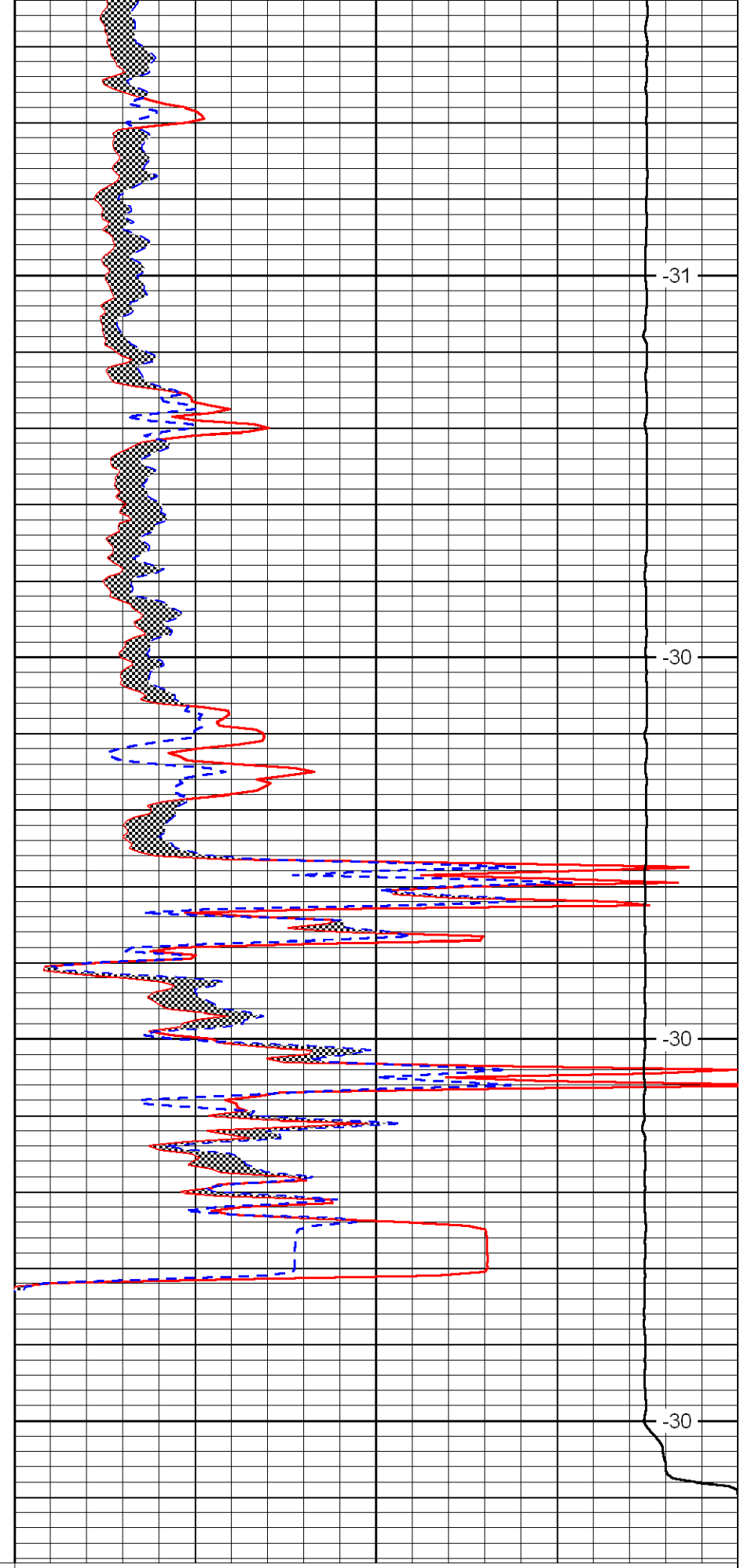


6200

6250

6300

6350



-31

-30

-30

-30

0 150

6 16

-200 0

0 40

0 40

15000 0

_____ (mm)

_____ (mm)

LSPD
(ft/min)