



Dual Compensated  
Porosity Log

DIGITAL LOG (785) 625-3858

API No. 15-069-20,322-00-00

Company **Falcon Exploration, Inc.**  
 Well **Williams No. 1-13**  
 Field **Wildcat**  
 County **Gray** State **Kansas**

Location **1230' FSL & 730' FEL**

Sec: **13** Twp: **28 S** Rge: **30 W**

Other Services  
DIL  
MEL/BHCS

Permanent Datum **Ground Level** Elevation **2800**  
 Log Measured From **Kelly Bushing** 10 Ft. Above Perm. Datum  
 Drilling Measured From **Kelly Bushing**

Elevation  
K.B. 2810  
D.F. G.L. 2800

Date **02/15/2010**

Run Number **One**

Type Log **CNL / CDL**

Depth Driller **6344**

Depth Logger **6251**

Bottom Logged Interval **6230**

Top Logged Interval **2500**

Type Fluid In Hole **Chemical**

Salinity, PPM CL **1,500**

Density **9.2**

Level **Full**

Max. Rec. Temp. F **141**

Operating Rig Time **5 Hours**

Equipment -- Location **10 Hays**

Recorded By **J. Wellbrock**

Witnessed By **K. Reavis**

Run No	Bit	Borehole Record		Casing Record	
		From	To	From	To
1	12.25	00	1813	8.625	24#
2	7.875	1813	6344		

<<< Fold Here >>>

All interpretations are opinions based on inferences from electrical or other measurements and we cannot and do not guarantee the accuracy or correctness of any interpretation, and we shall not, except in the case of gross or willful negligence on our part, be liable or responsible for any loss, costs, damages, or expenses incurred or sustained by anyone resulting from any interpretation made by any of our officers, agents or employees. These interpretations are also subject to our general terms and conditions set out in our current Price Schedule.

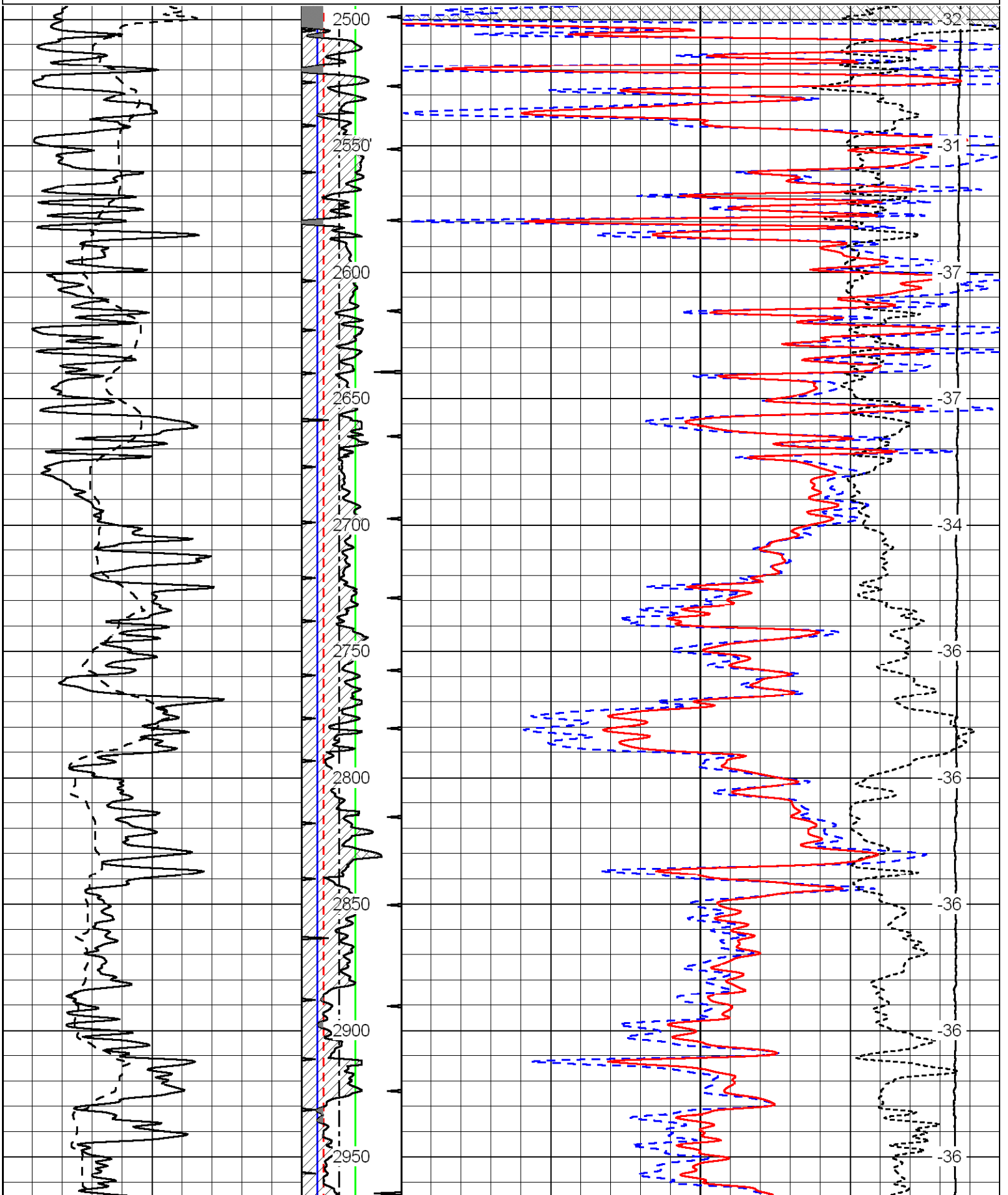
Comments

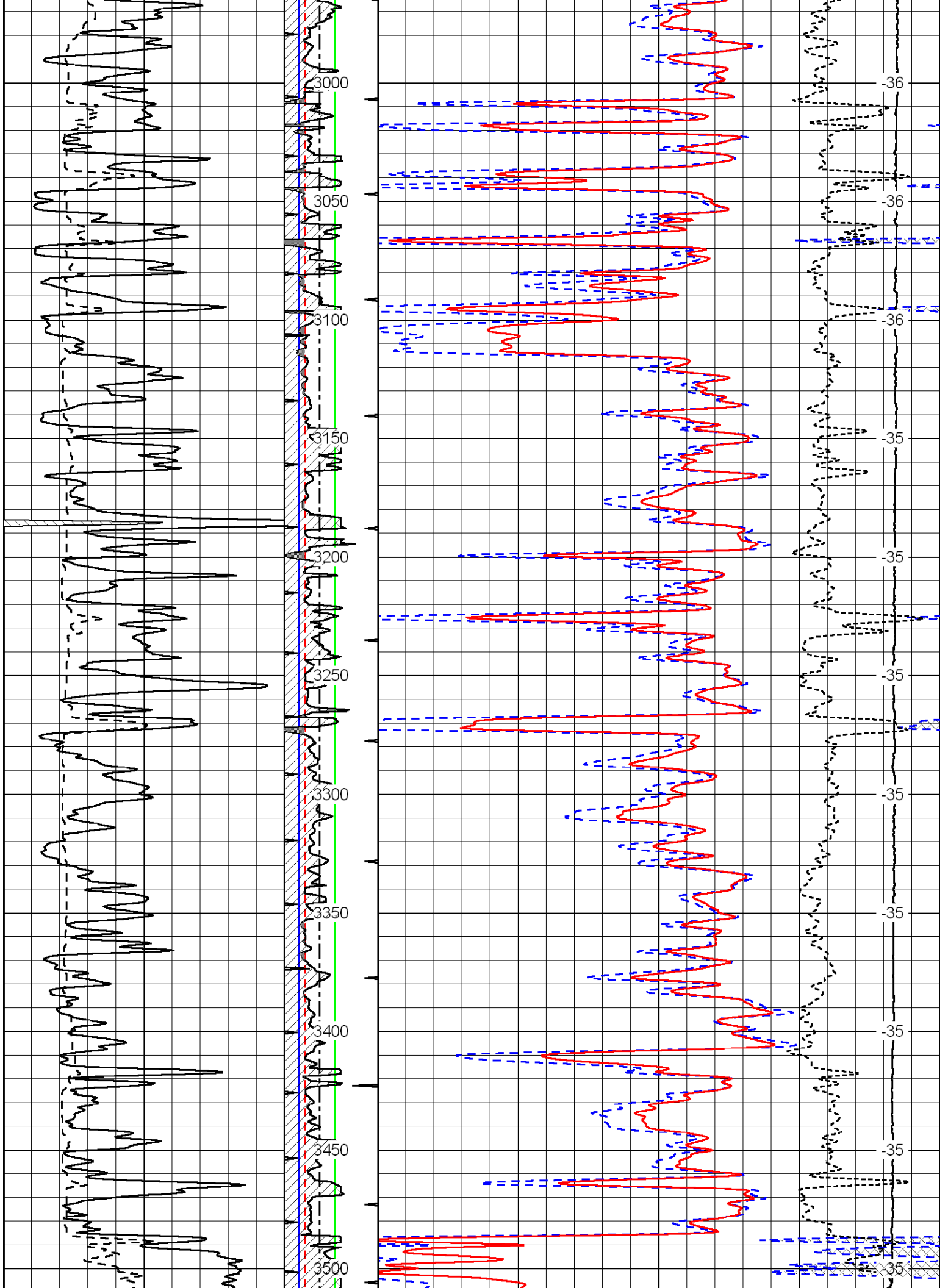
Thank you for using Log-Tech, Inc.  
(785) 625-3858

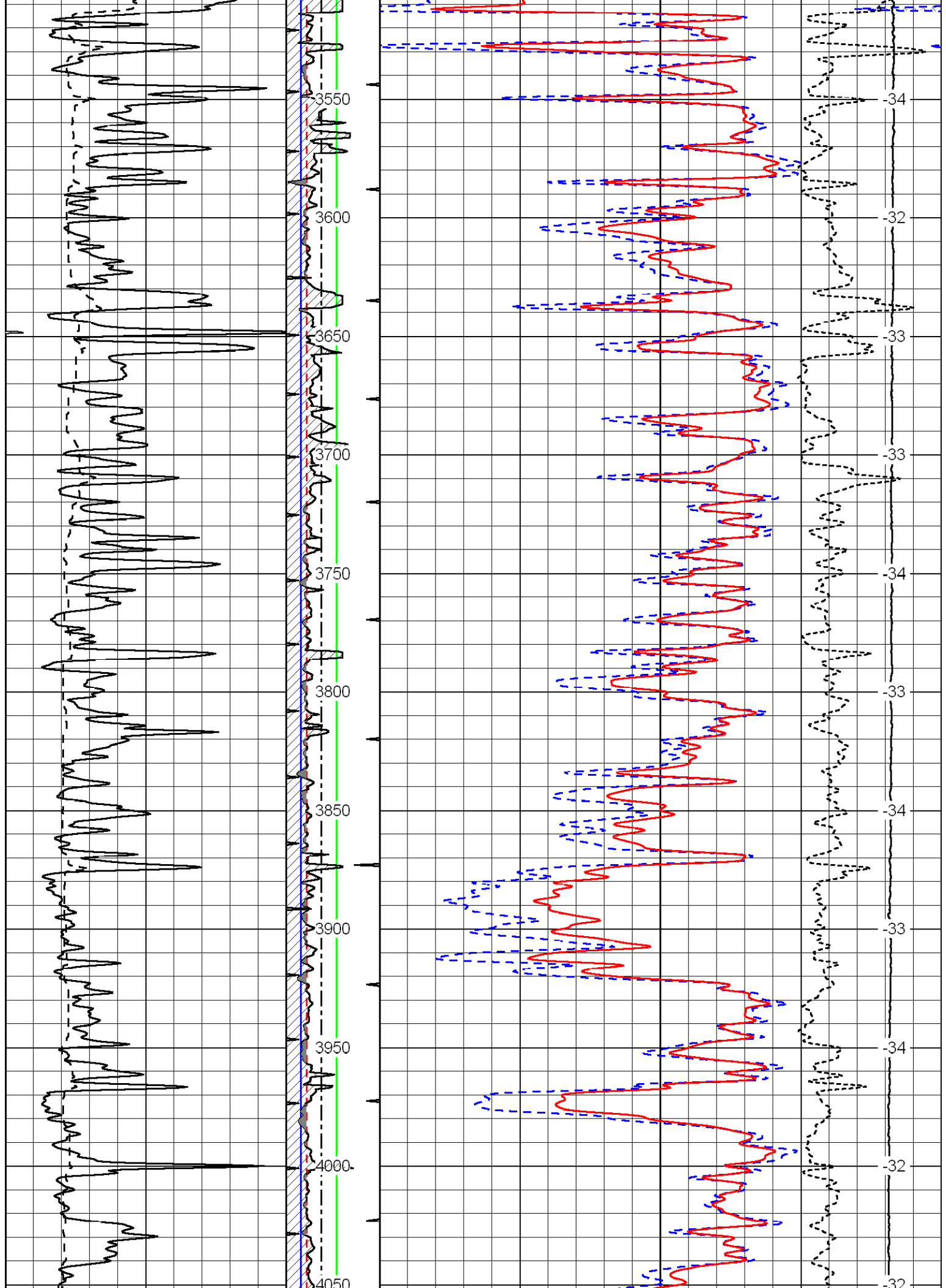
Montezuma to Ingals Black Top, 3/4 N, 5 W on BB Road, 3/4 N, W Into

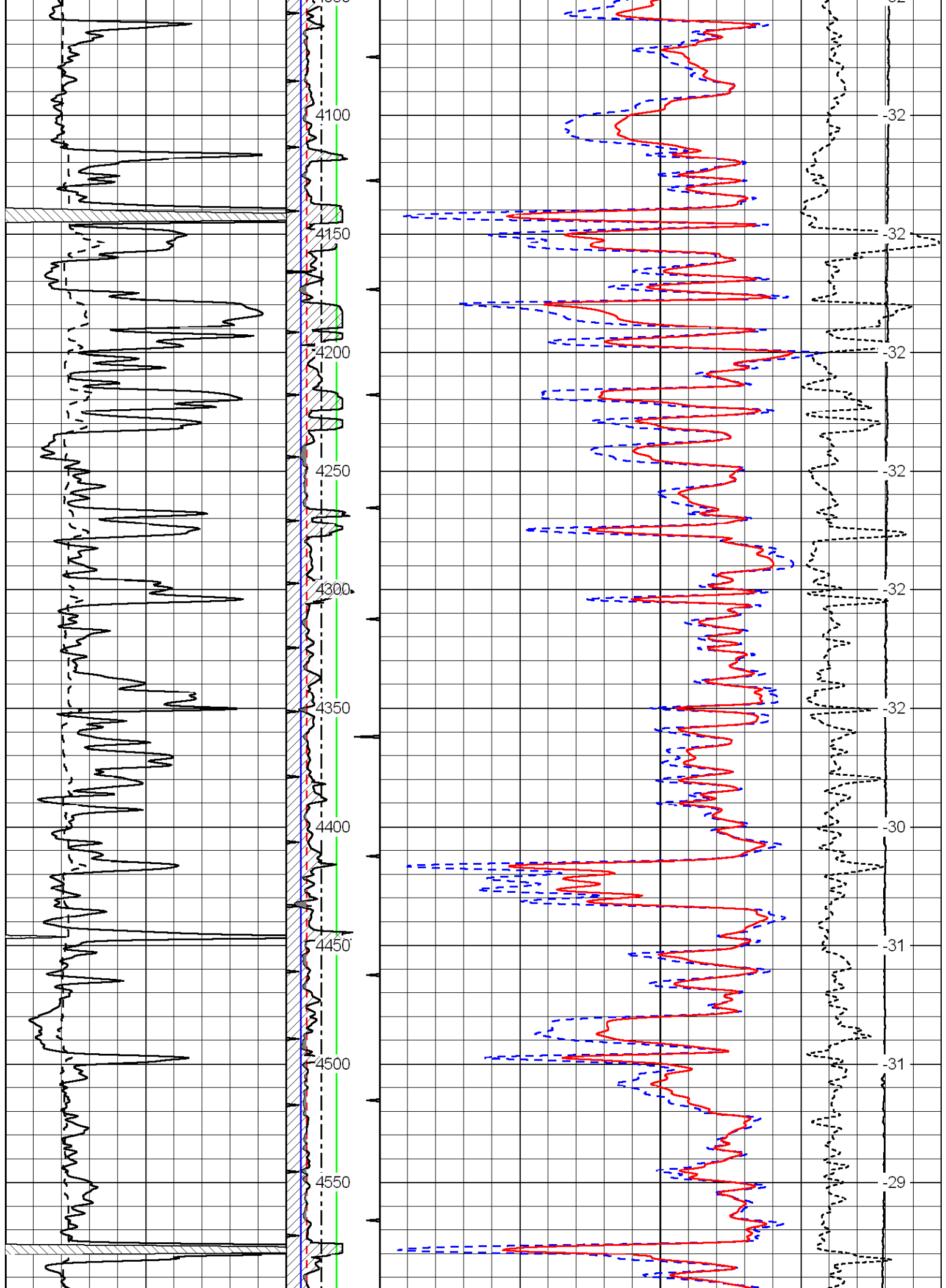
Database File: c:\warrior\data\falcon\_williams #1-13\falhd.db  
 Dataset Pathname: dil/fal2in  
 Presentation Format: cdldga  
 Dataset Creation: Mon Feb 15 18:59:11 2010  
 Charted by: Depth in Feet scaled 1:600

0	Gamma Ray	150	DGA	30	Comp. Density Porosity(Ls) (pu)	-10
6	Caliper (in)	16	(g/cc)	15000	Line Tension (lb)	0
			2.6 3.1	2	Bulk Density (g/cc)	3
					-0.25 Correction (g/cc)	0.25
					LSPD	
					(ft/min)	

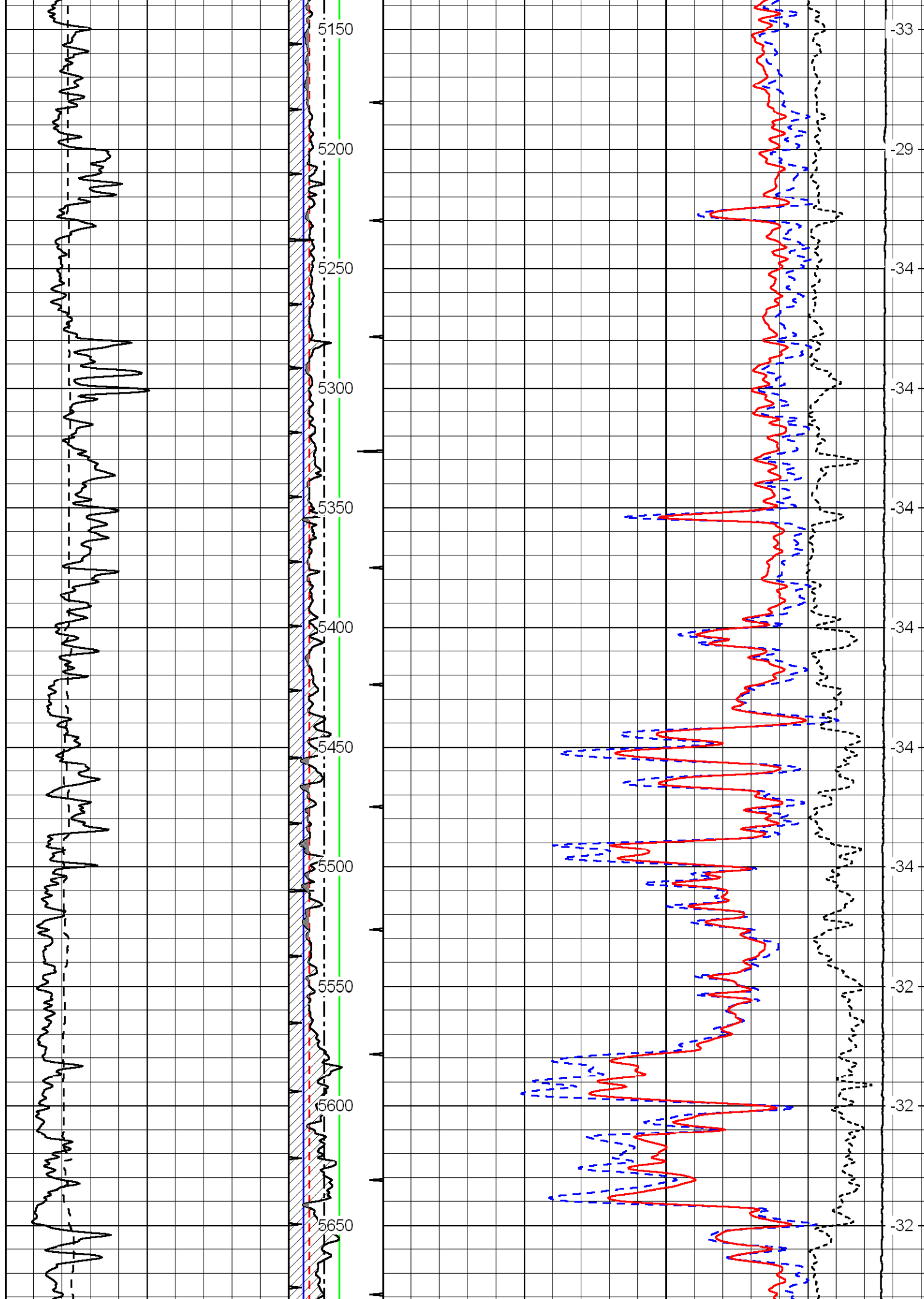




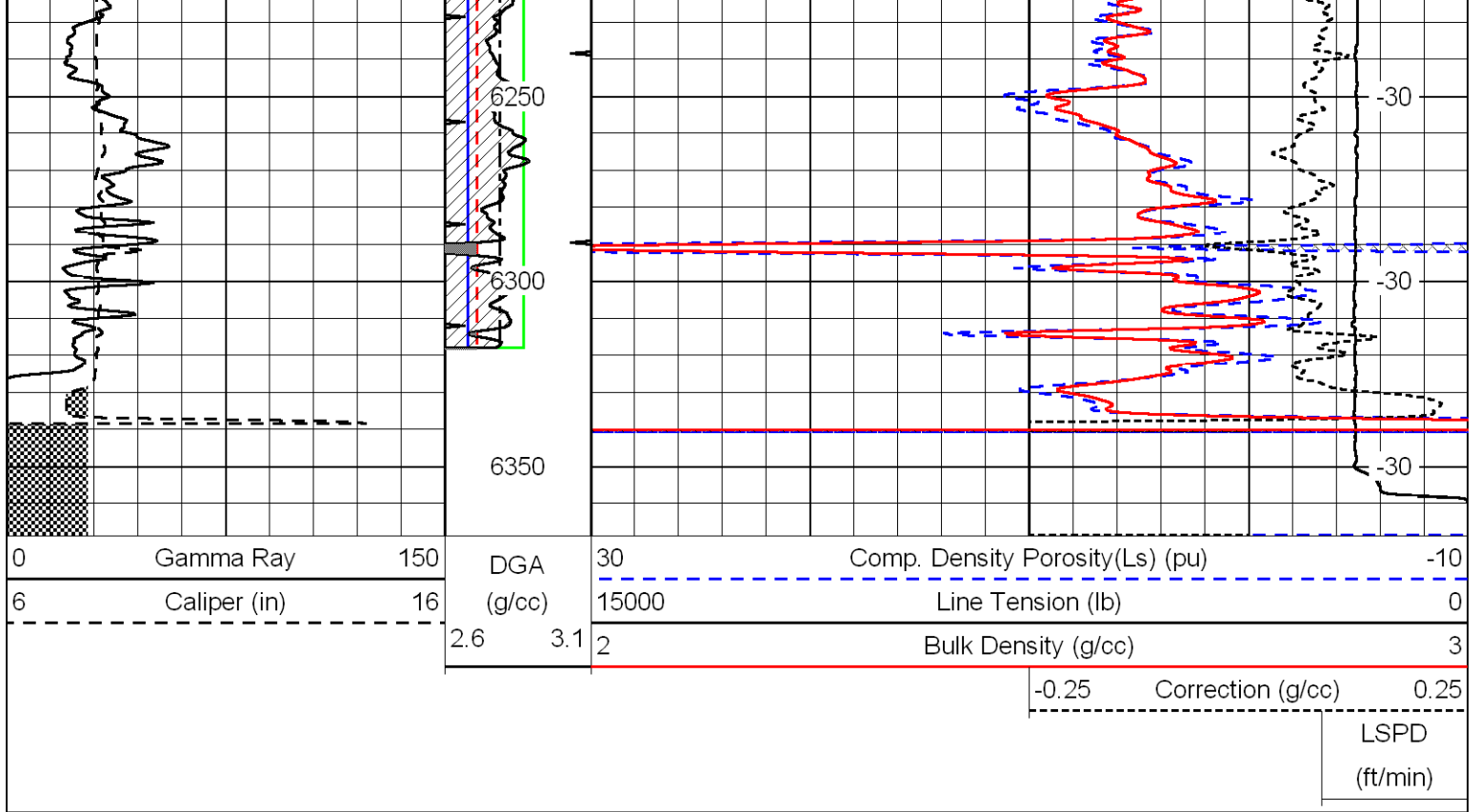












Database File: c:\warrior\data\falcon\_williams #1-13\falhd.db  
 Dataset Pathname: dil/fal2in  
 Presentation Format: ducpdga  
 Dataset Creation: Mon Feb 15 18:59:11 2010  
 Charted by: Depth in Feet scaled 1:240

