



**Borehole Compensated
Sonic Log**

DIGITAL LOG (785) 625-3858

API No. 15-051-25,945-00-00	Company Samuel Gary Jr & Associates, Inc.	Location NW NE SE SE 1080' FSL & 550' FEL	Other Services CNL/CDL MEL/DIL
Well Dome No.1-32	County Ellis		
Field Wildcat	State Kansas		
Sec: 32	Twp: 15S	Rge: 16W	Elevation K.B. 1883 D.F. G.L. 1874

Permanent Datum	Ground Level	Elevation	1874
Log Measured From	Kelly Bushing	9 Ft. Above Perm. Datum	
Drilling Measured From	Kelly Bushing		
Date	1/30/2010		
Run Number	Two		
Type Log	BHC Sonic		
Depth Driller	3580		
Depth Logger	3578		
Bottom Logged Interval	3567		
Top Logged Interval	1000		
Type Fluid In Hole	Chemical		
Salinity, PPM CL	8,100		
Density	9.3		
Level	Full		
Max. Rec. Temp. F	112		
Operating Rig Time	5 Hours		
Equipment -- Location	15 Hays		
Recorded By	C. Desaire		
Witnessed By	Tim Henrick		

Run No	Bit	Borehole Record		Casing Record	
		From	To	From	To
1	12.25	00	1005	8.625	24#
2	7.875	1005	3580		

<<< Fold Here >>>

All interpretations are opinions based on inferences from electrical or other measurements and we cannot and do not guarantee the accuracy or correctness of any interpretation, and we shall not, except in the case of gross or willful negligence on our part, be liable or responsible for any loss, costs, damages, or expenses incurred or sustained by anyone resulting from any interpretation made by any of our officers, agents or employees. These interpretations are also subject to our general terms and conditions set out in our current Price Schedule.

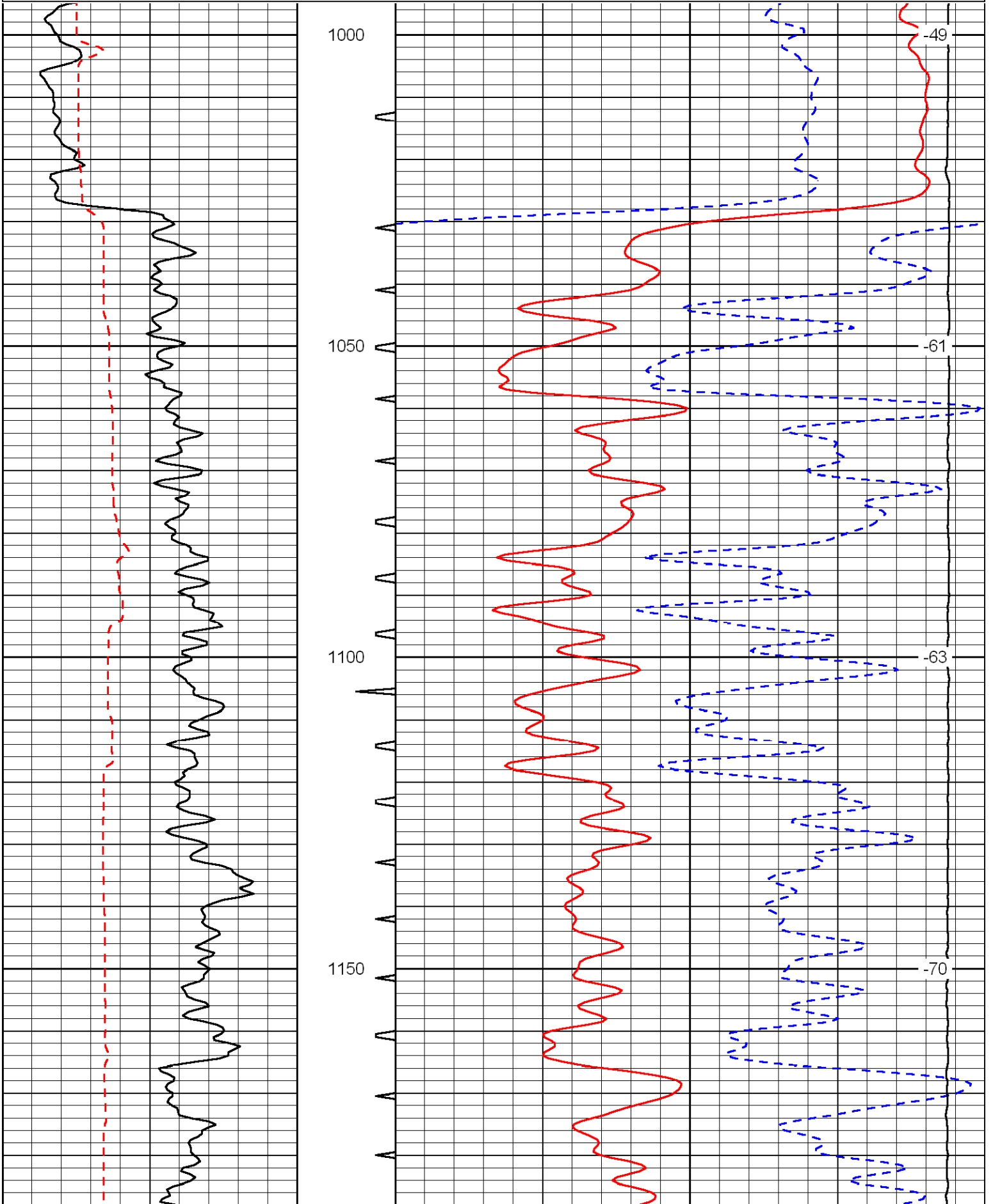
Comments

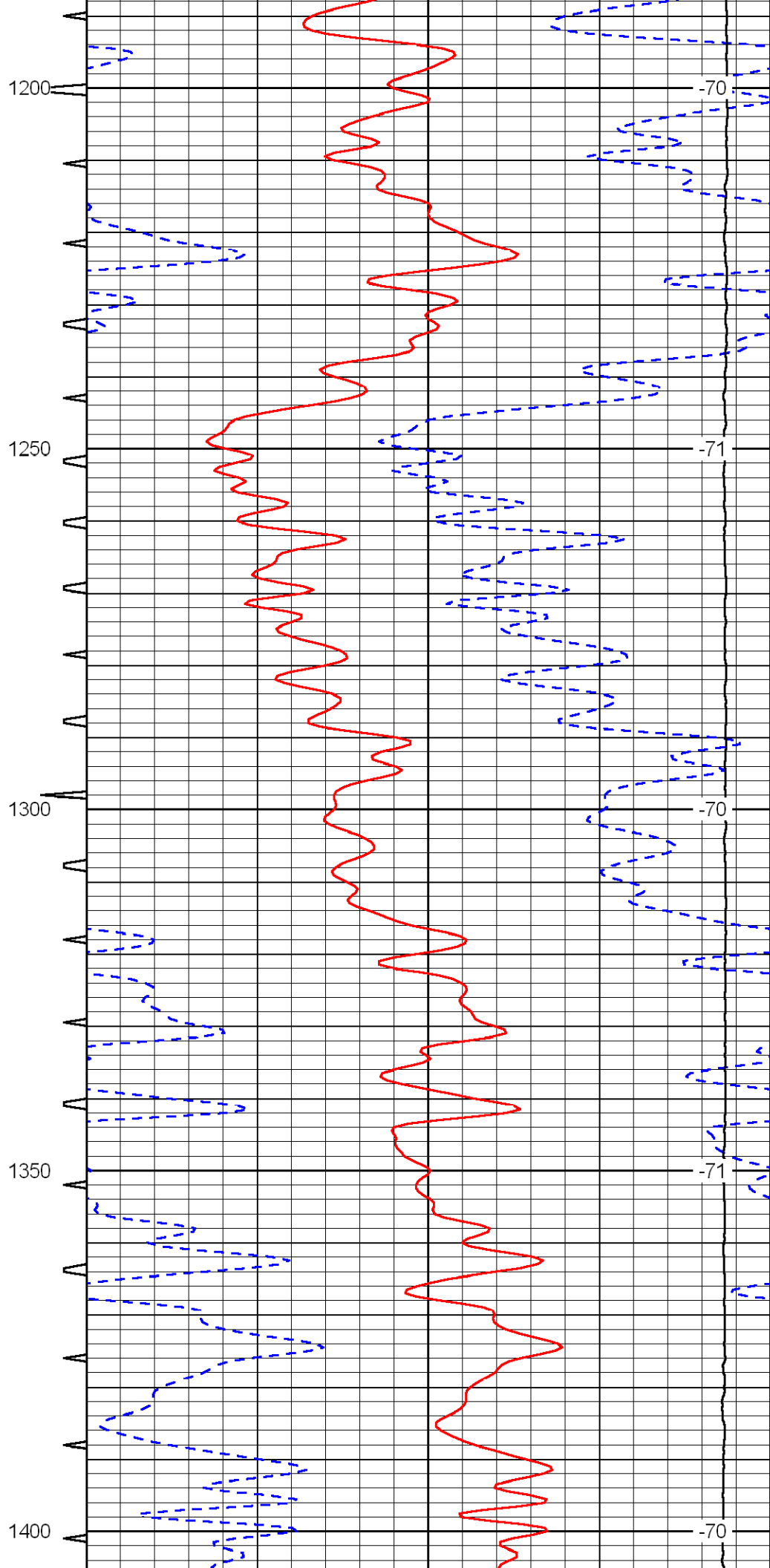
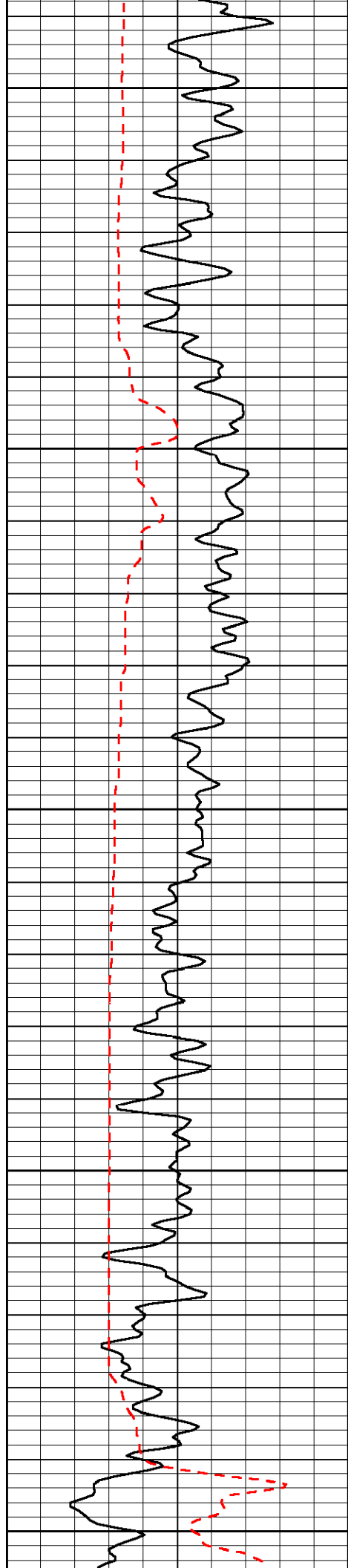
Thank you for using Log-Tech, Inc.
(785) 625-3858

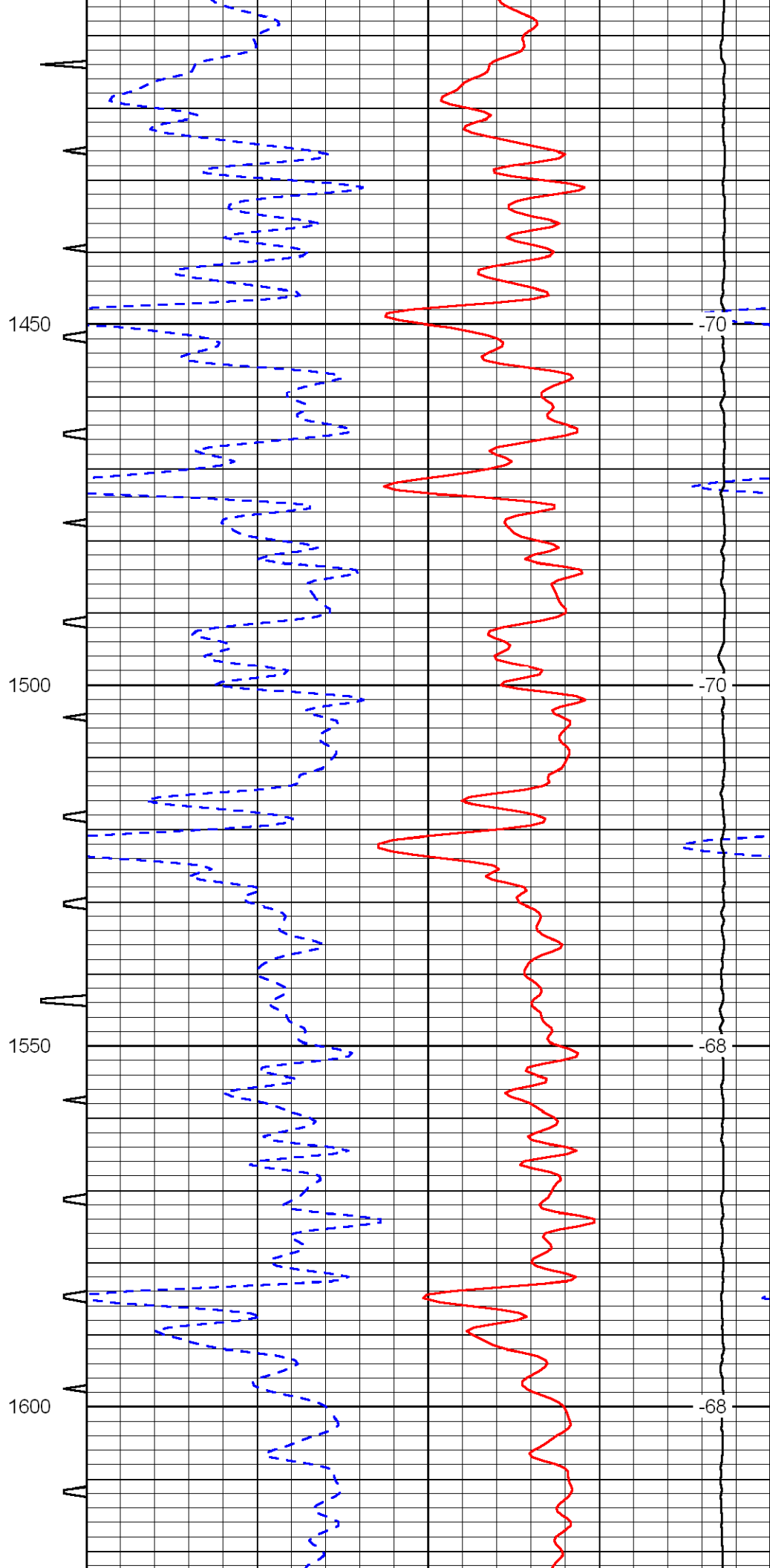
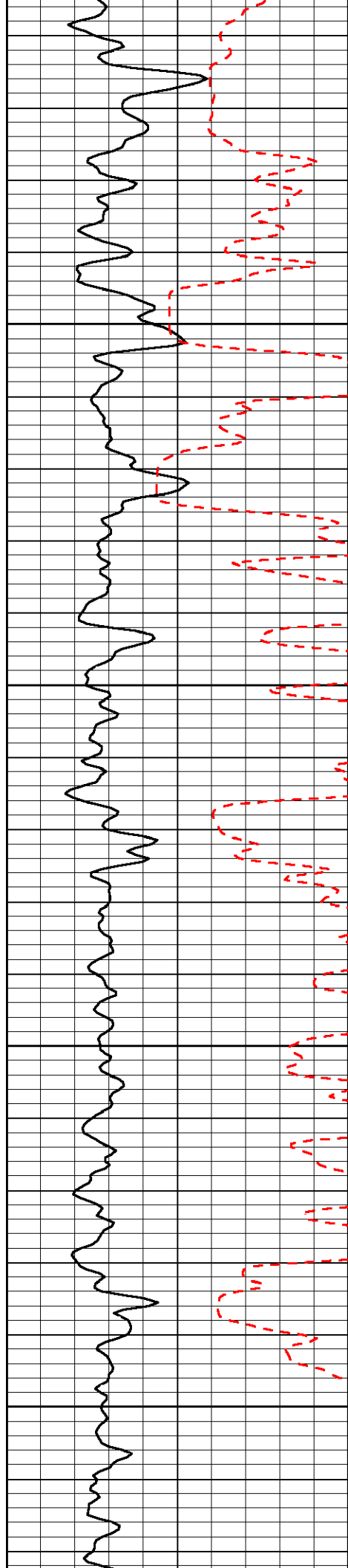
Pfeifer, 2 1/2 E to Vincent Rd,
1/4 N, W Into

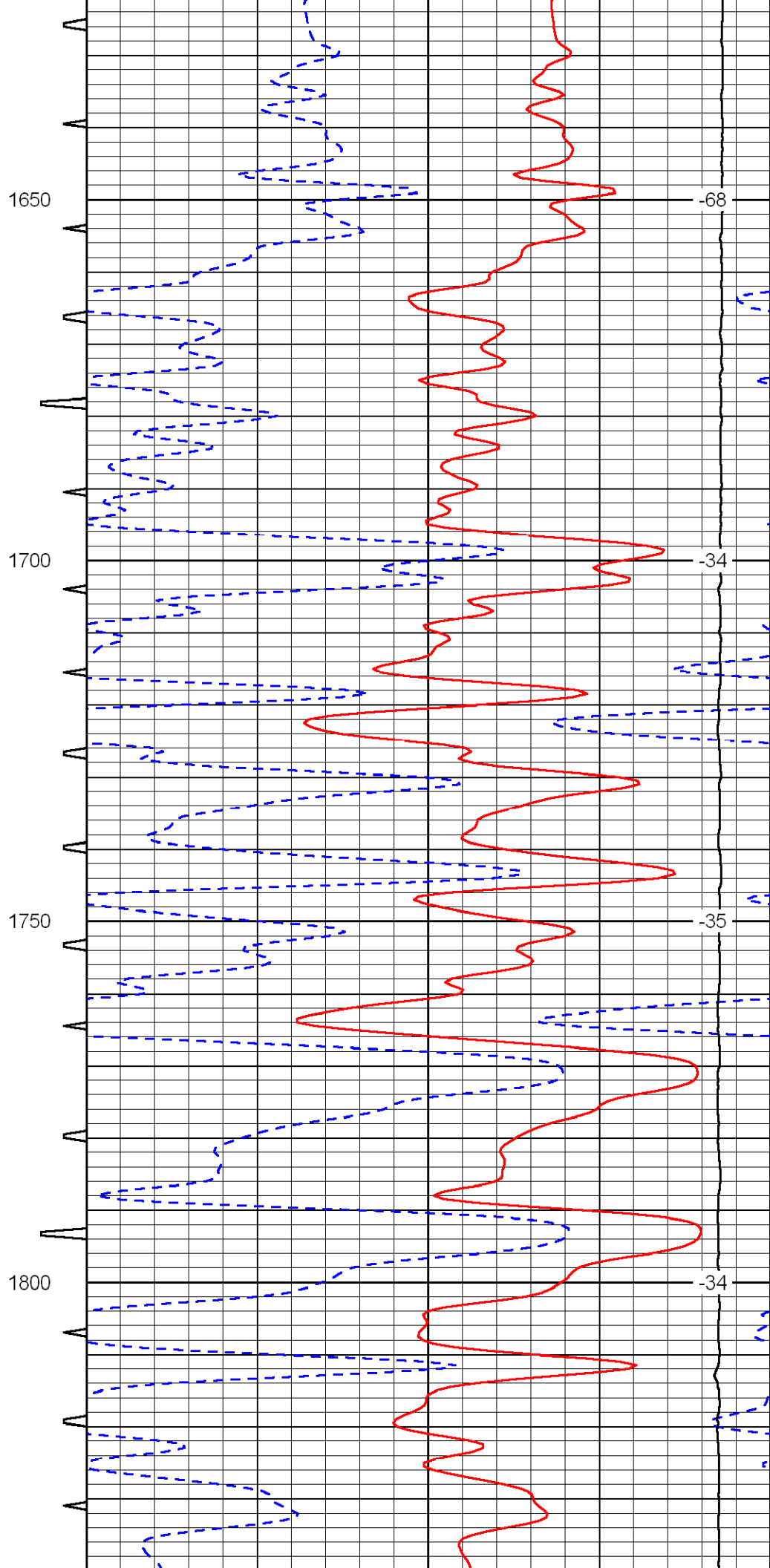
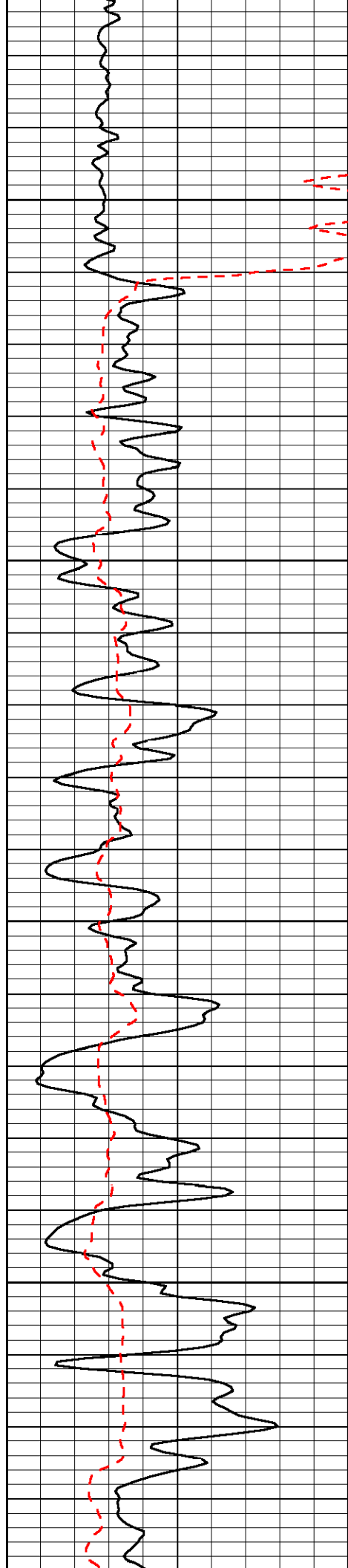
Database File: c:\warrior\backup of data\sam gary_dome#1-32\samgaryhd.db
 Dataset Pathname: dil/Stack
 Presentation Format: sonic
 Dataset Creation: Sat Jan 30 04:52:14 2010
 Charted by: Depth in Feet scaled 1:240

0	Gamma Ray	150	Sonic Int	140	Delta Time (usec/ft) (usec/ft)	40
150	Gamma Ray	300	5	0	SPOR (pu)	-10
6	Caliper (in)	16		15000	LTEN (lb) (lb)	0
						LSPD (ft/min)









1650

-68

1700

-34

1750

-35

1800

-34

