



# Microresistivity Log

**DIGITAL LOG** (785) 625-3858

API No.	15-051-25,945-00-00		
Company	Samuel Gary Jr & Associates, Inc.		
Well	Dome No.1-32		
Field	Wildcat		
County	Ellis	State	Kansas
Location	NW NE SE SE 1080' FSL & 550' FEL		
Sec: 32	Twp: 15S	Rge: 16W	Other Services CNL/CDL DIL/BHCS
Permanent Datum	Ground Level	Elevation 1874	Elevation
Log Measured From	Kelly Bushing	9 Ft. Above Perm. Datum	K.B. 1883
Drilling Measured From	Kelly Bushing		D.F. 1874
			G.L. 1874

Date	1/30/2010	
Run Number	Two	
Depth Driller	3580	
Depth Logger	3578	
Bottom Logged Interval	3577	
Top Log Interval	1700	
Casing Driller	8.625 @ 1005	
Casing Logger	1000	
Bit Size	7.875	
Type Fluid in Hole	Chemical	
Salinity, ppm CL	8.100	
Density / Viscosity	9.3	55
pH / Fluid Loss	10.0	8.4
Source of Sample	Flowline	
Rm @ Meas. Temp	.85 @	55
Rmf @ Meas. Temp	.64 @	55
Rmc @ Meas. Temp	1.15 @	55
Source of Rmf / Rmc	Charts	
Rm @ BHT	.42 @	112
Operating Rig Time	5 Hours	
Max Rec. Temp. F	112	
Equipment Number	15	
Location	Hays	
Recorded By	C. Desaire	
Witnessed By	Tim Henrick	

<<< Fold Here >>>

All interpretations are opinions based on inferences from electrical or other measurements and we cannot and do not guarantee the accuracy or correctness of any interpretation, and we shall not, except in the case of gross or willful negligence on our part, be liable or responsible for any loss, costs, damages, or expenses incurred or sustained by anyone resulting from any interpretation made by any of our officers, agents or employees. These interpretations are also subject to our general terms and conditions set out in our current Price Schedule.

### Comments

Thank you for using Log-Tech, Inc.  
(785) 625-3858

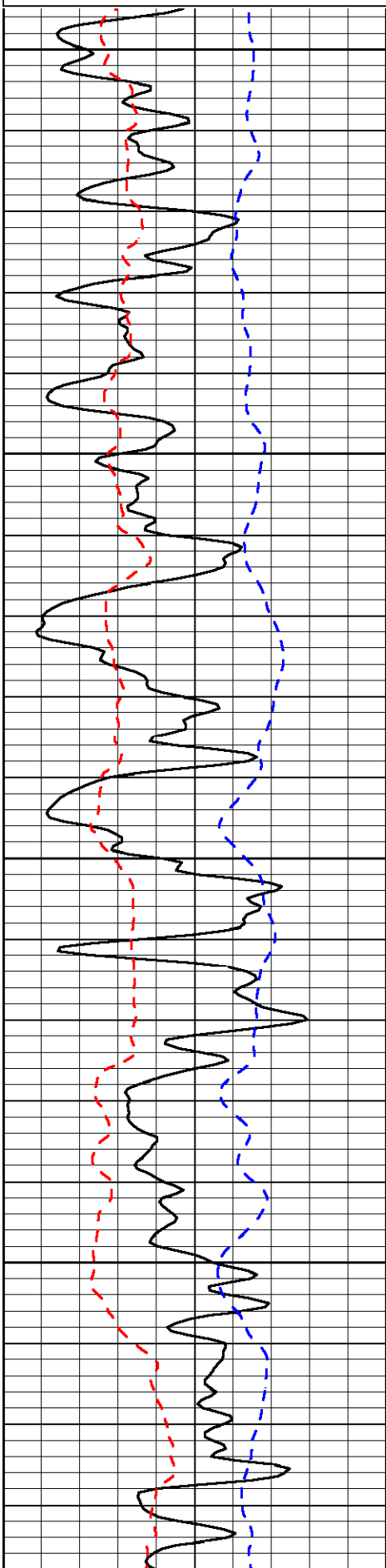
Pfeifer, 2 1/2 E to Vincent Rd,  
1/4 N, W Into

Database File:	c:\warrior\backup of data\sam gary_dome#1-32\samgaryhd.db
Dataset Pathname:	dil/Stack
Presentation Format:	micro
Dataset Creation:	Sat Jan 30 04:52:14 2010
Charted by:	Depth in Feet scaled 1:240

0	Gamma Ray	150
6	Micro Log Caliper (in)	16
-200	SP (MV)	0

0	Micro Inverse 1 X 1 (Ohm-m)	40
0	Micro Normal 2" (Ohm-m)	40
15000	Line Weight (lb)	0

LSPD  
(ft/min)

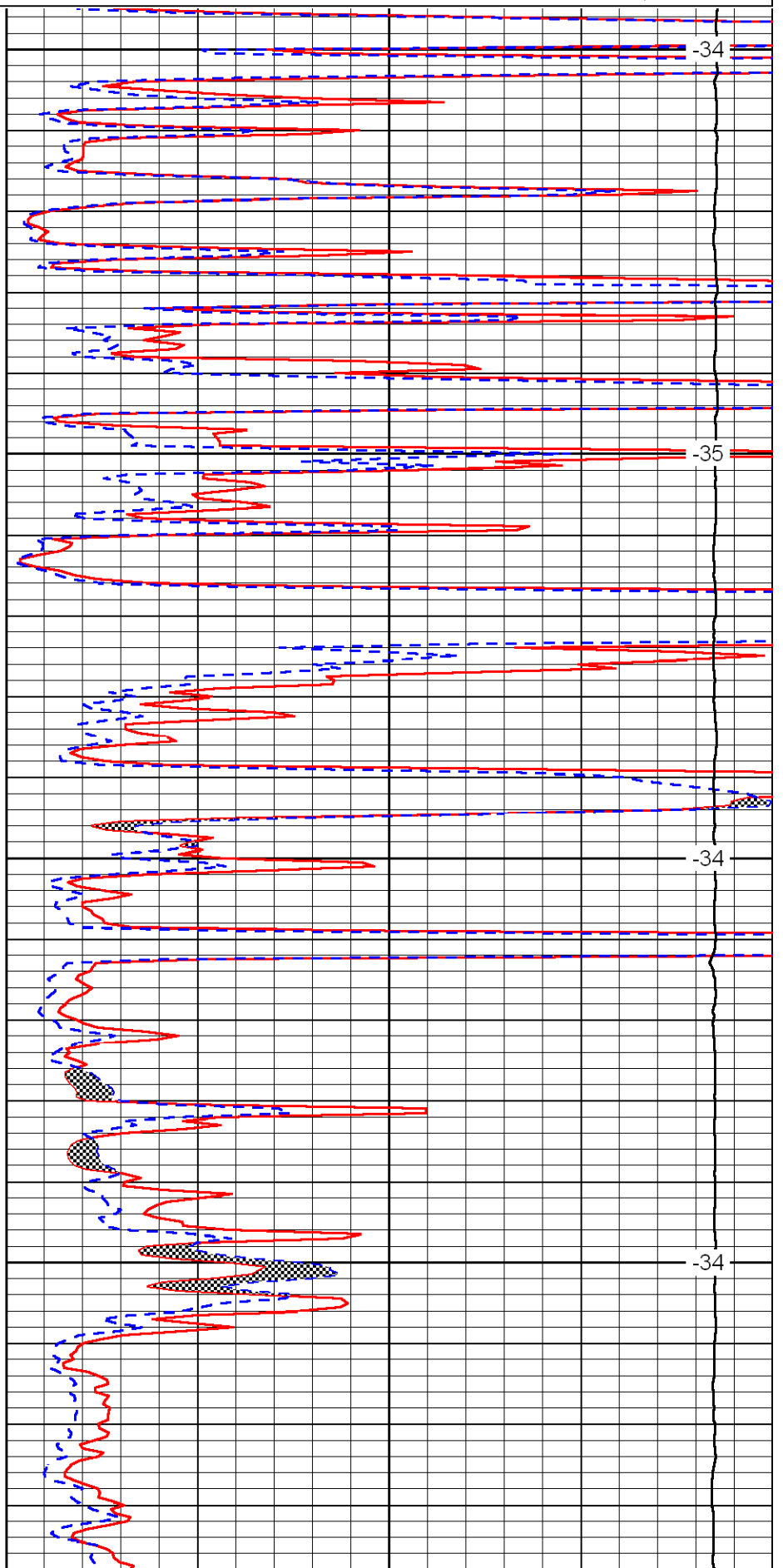


1700

1750

1800

1850

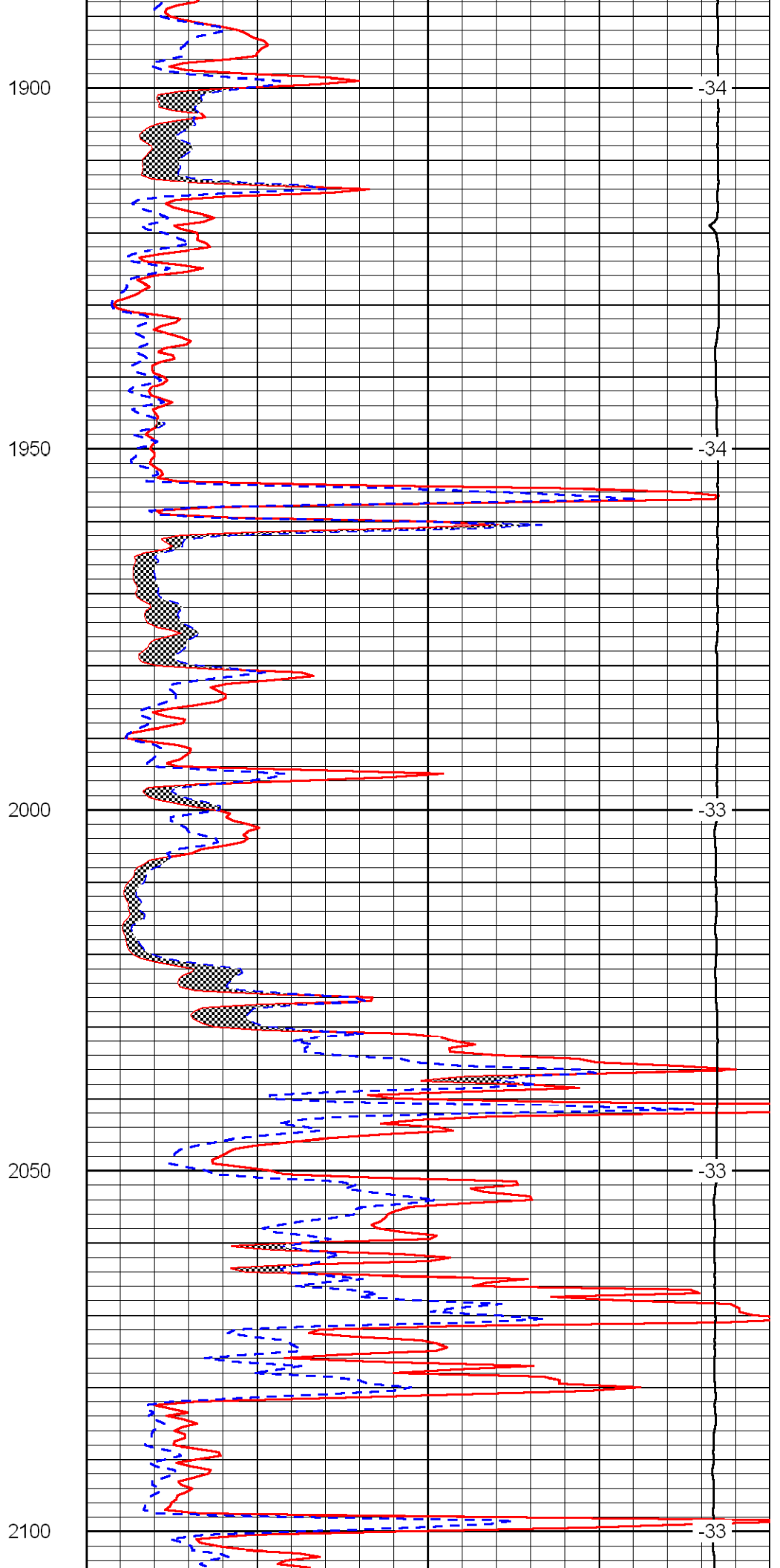
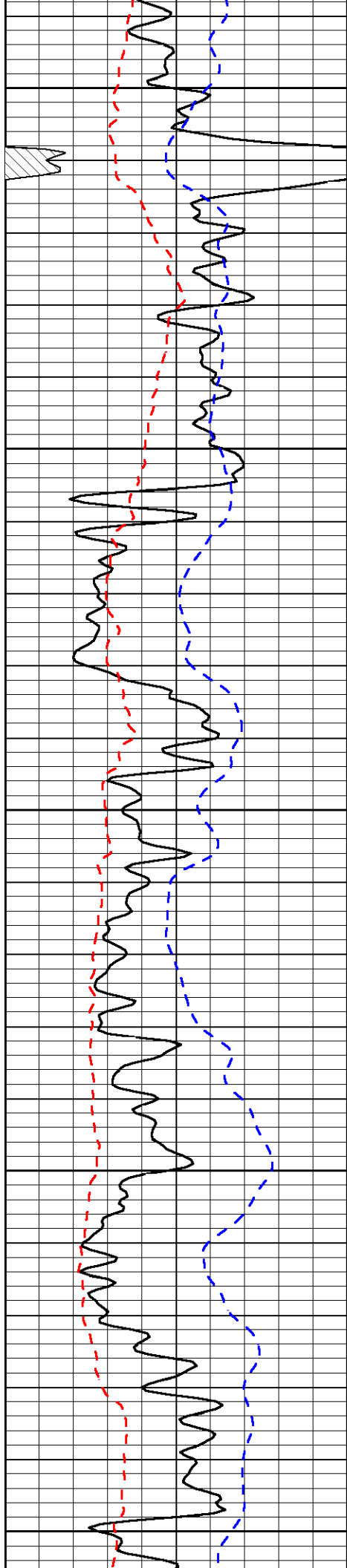


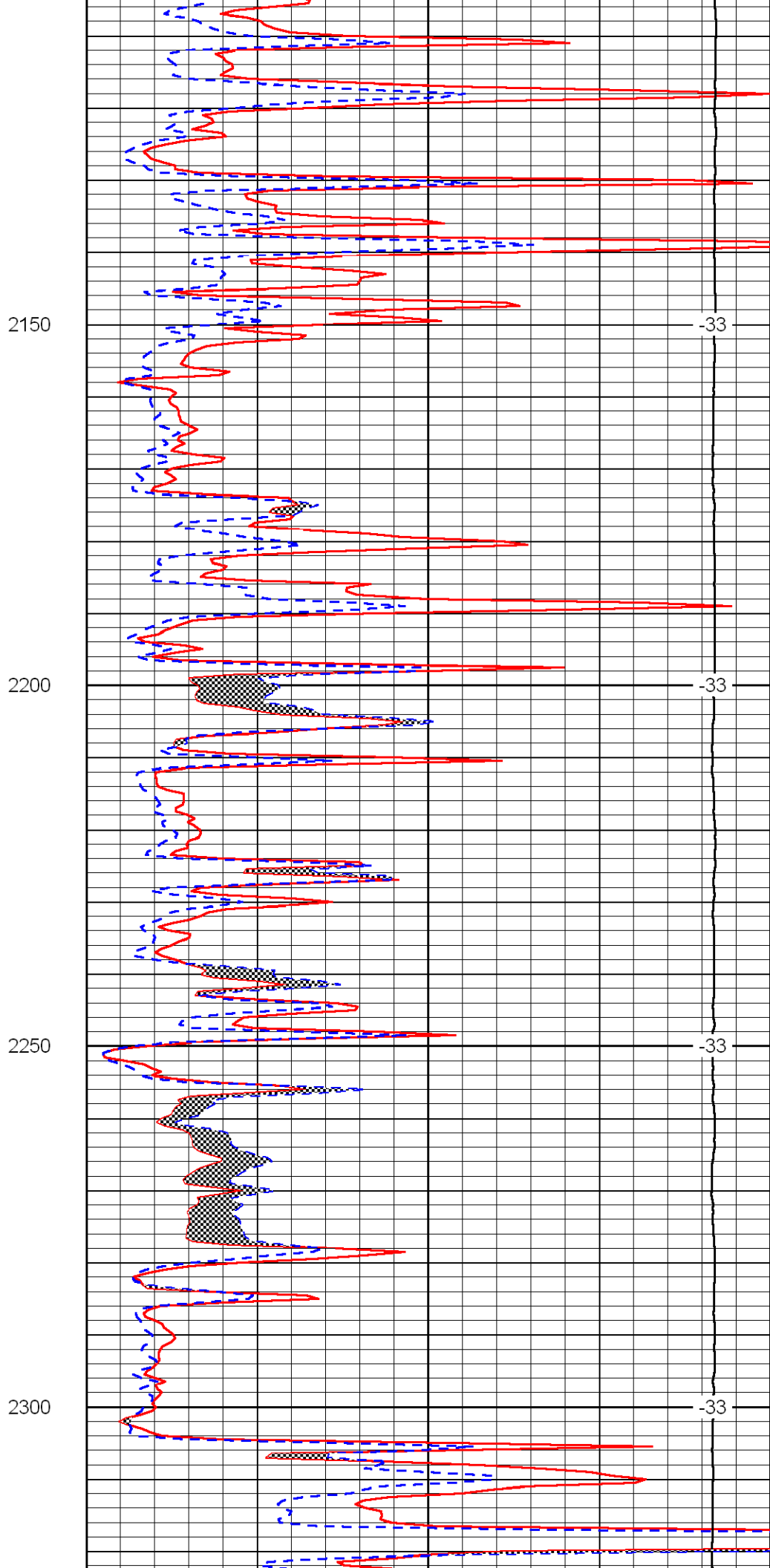
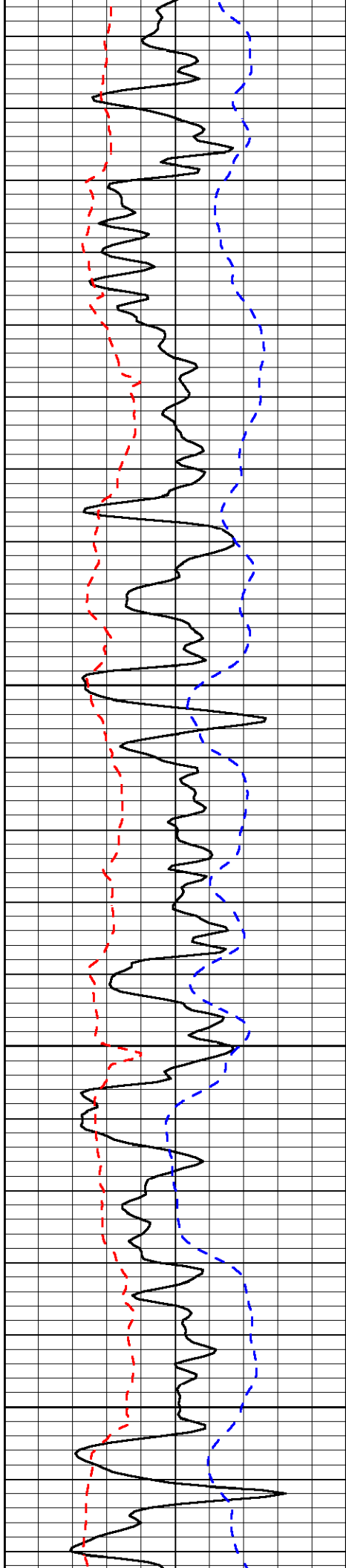
-34

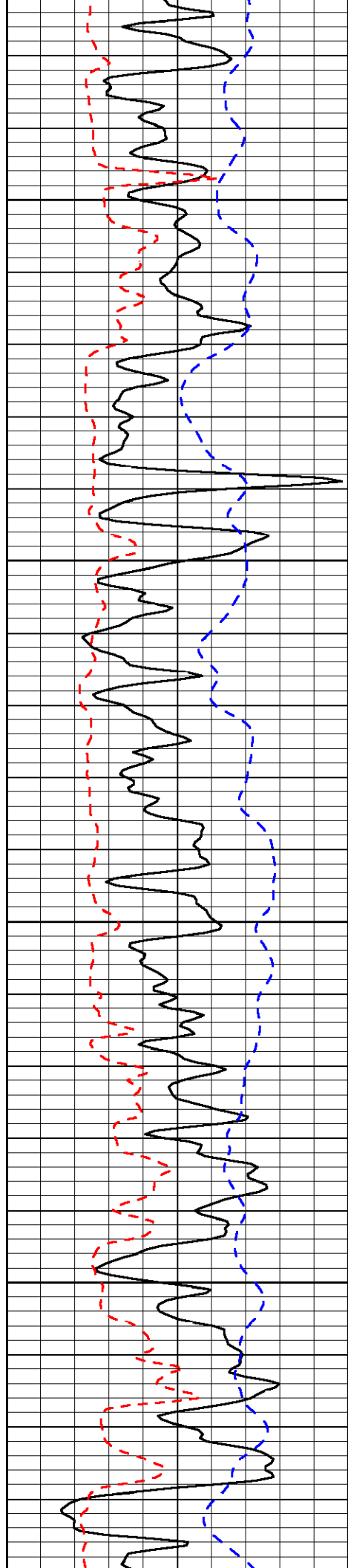
-35

-34

-34





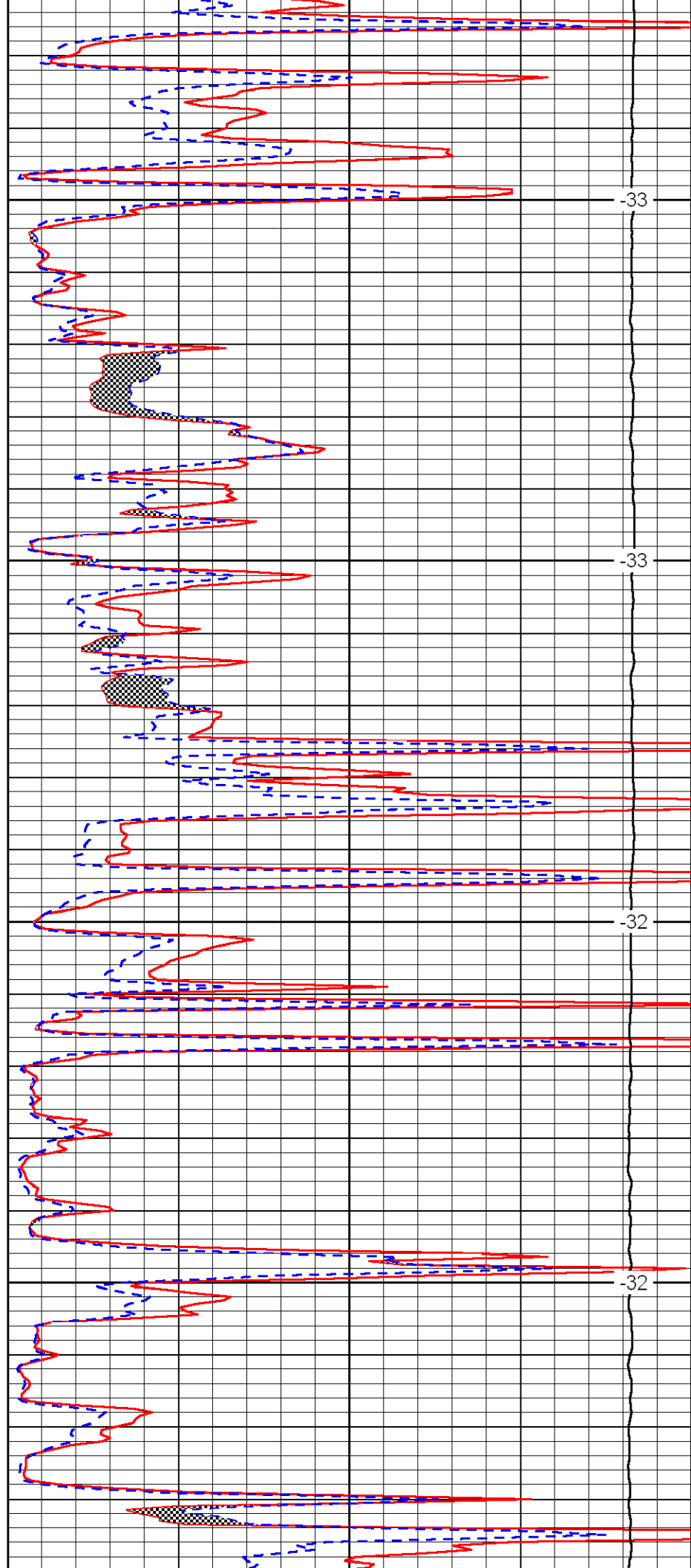


2350

2400

2450

2500

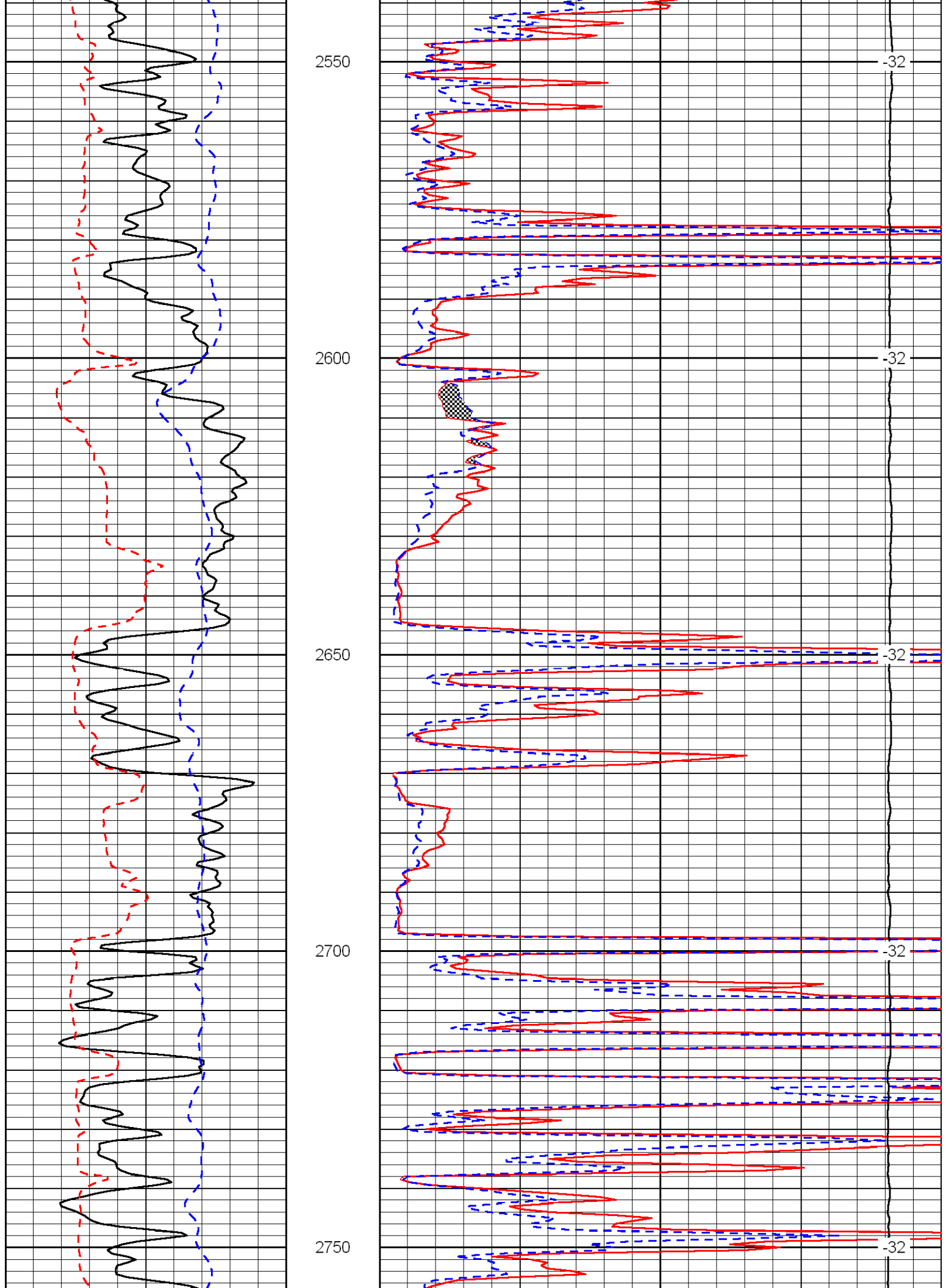


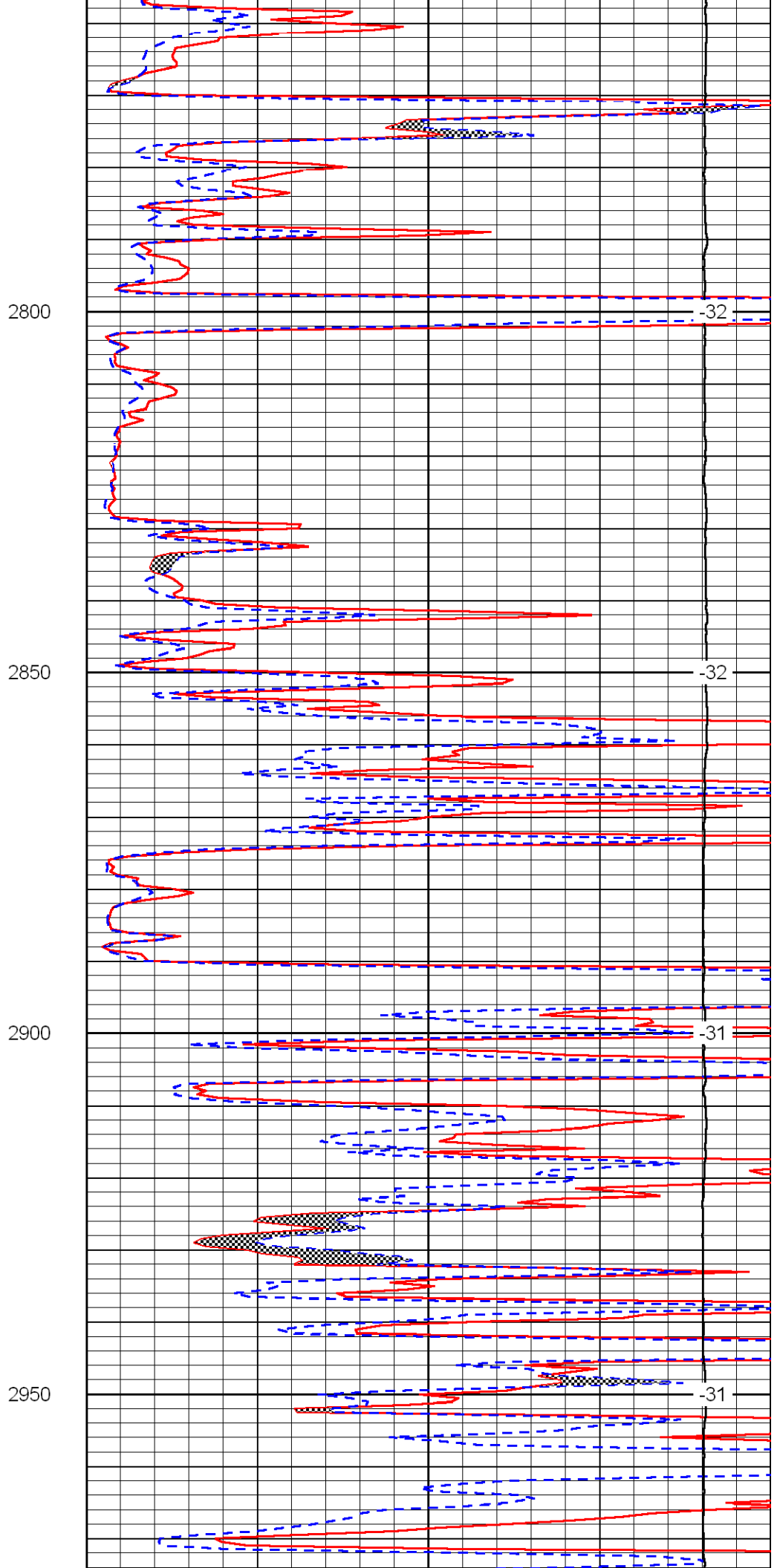
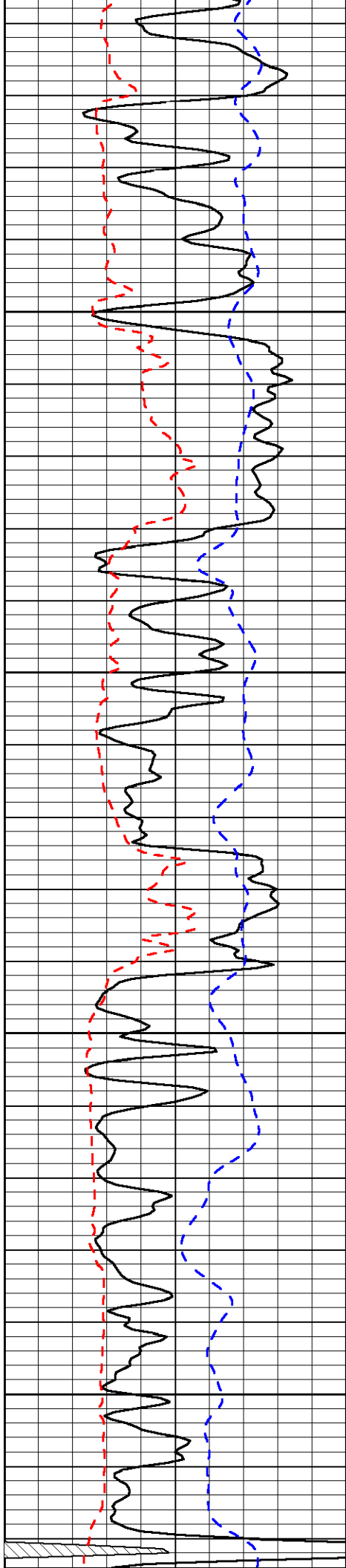
-33

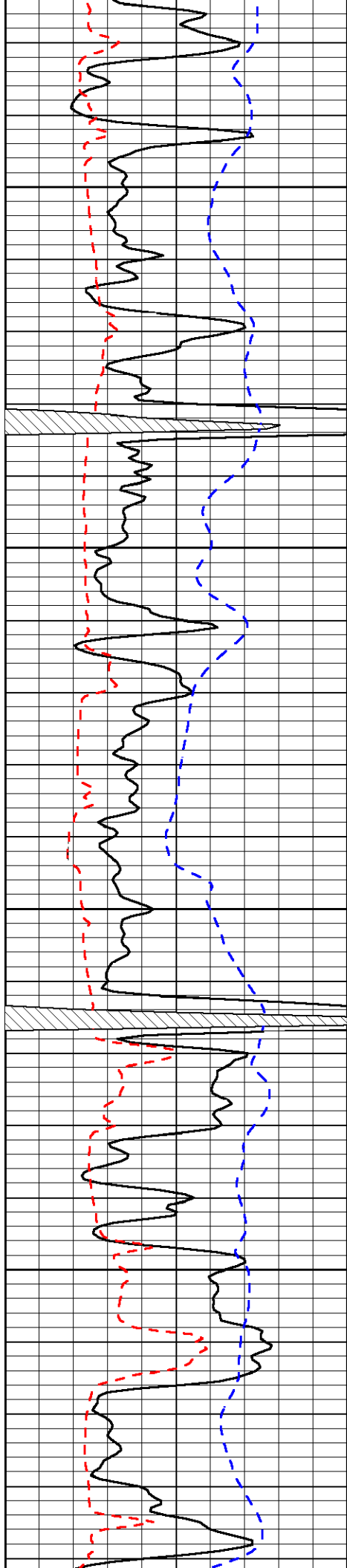
-33

-32

-32





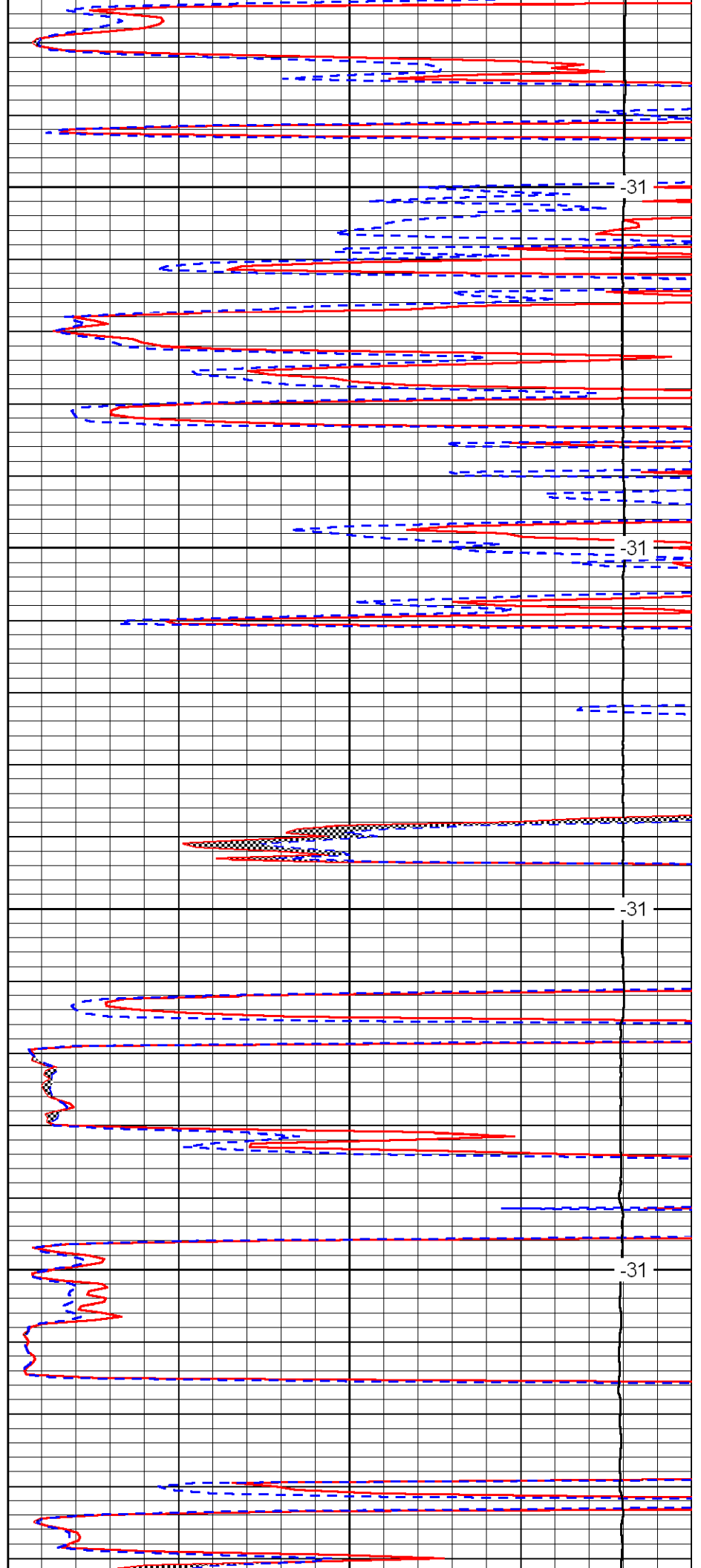


3000

3050

3100

3150

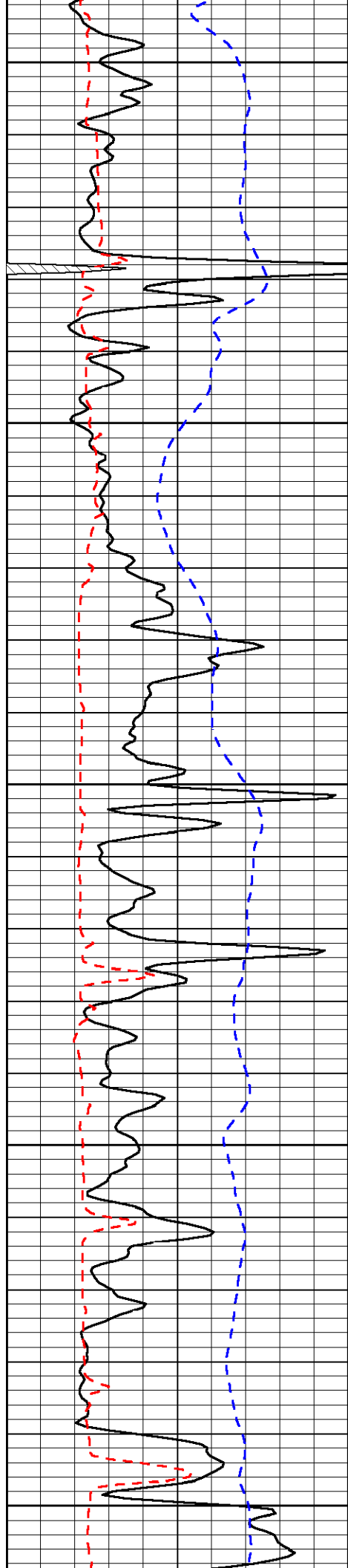


-31

-31

-31

-31



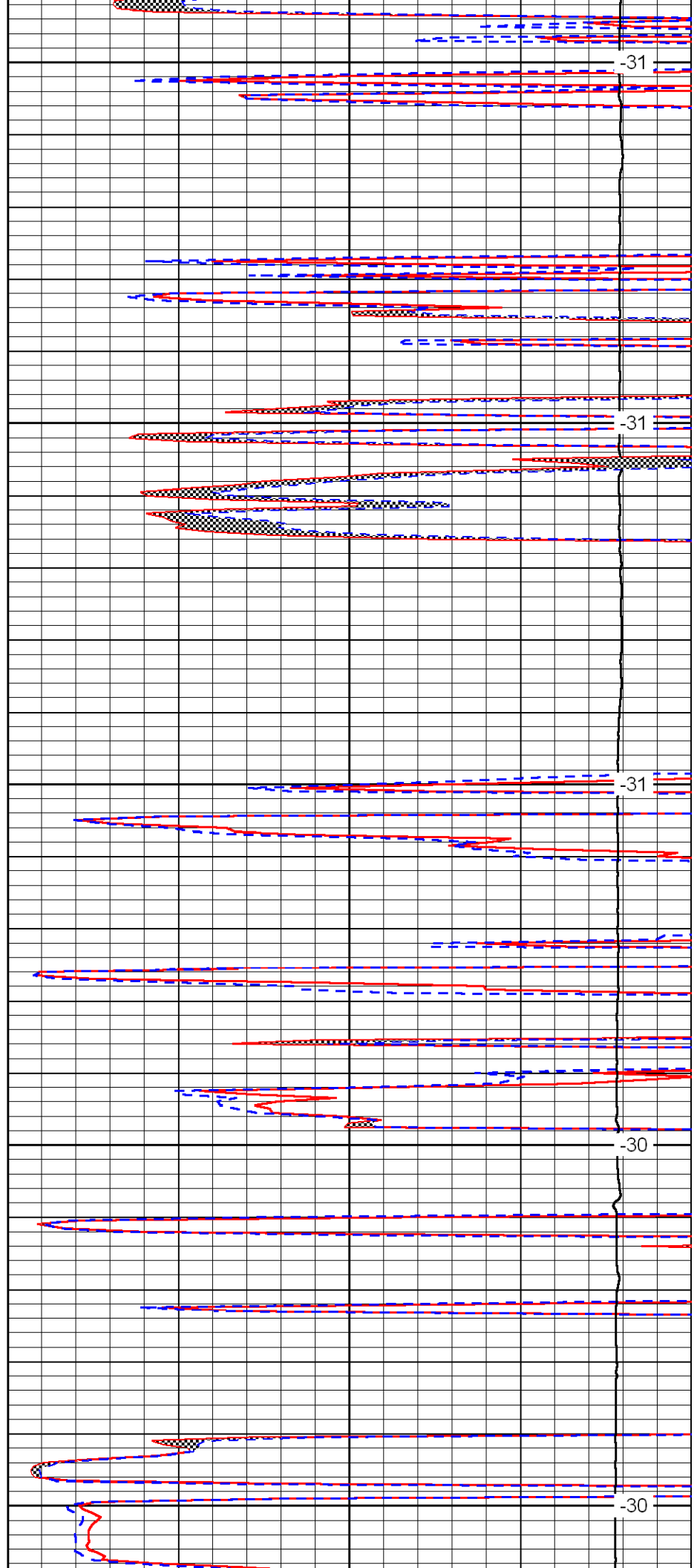
3200

3250

3300

3350

3400



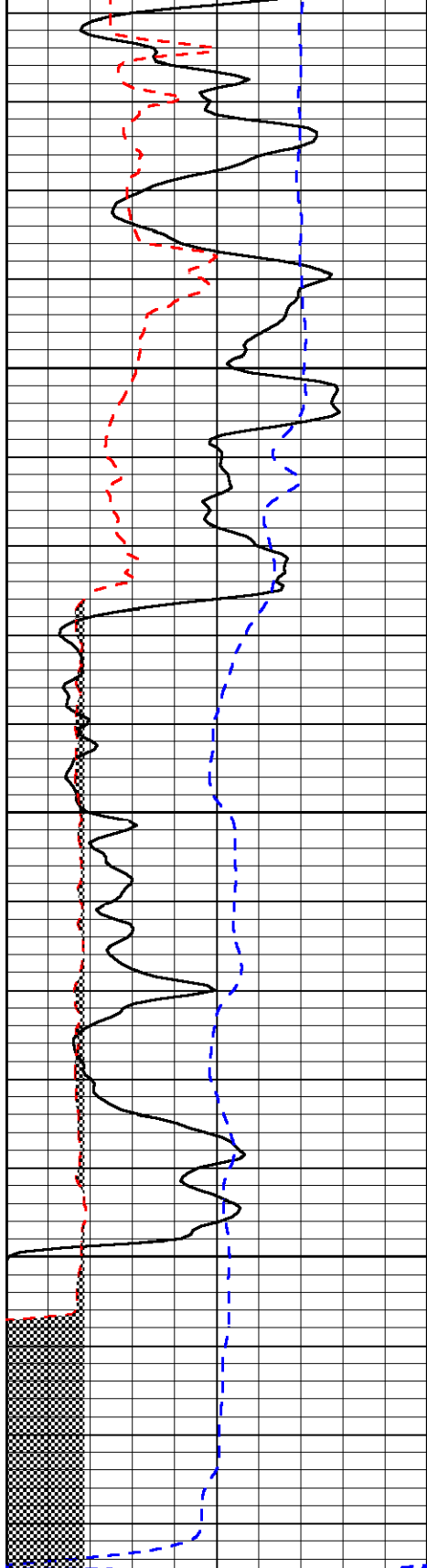
-31

-31

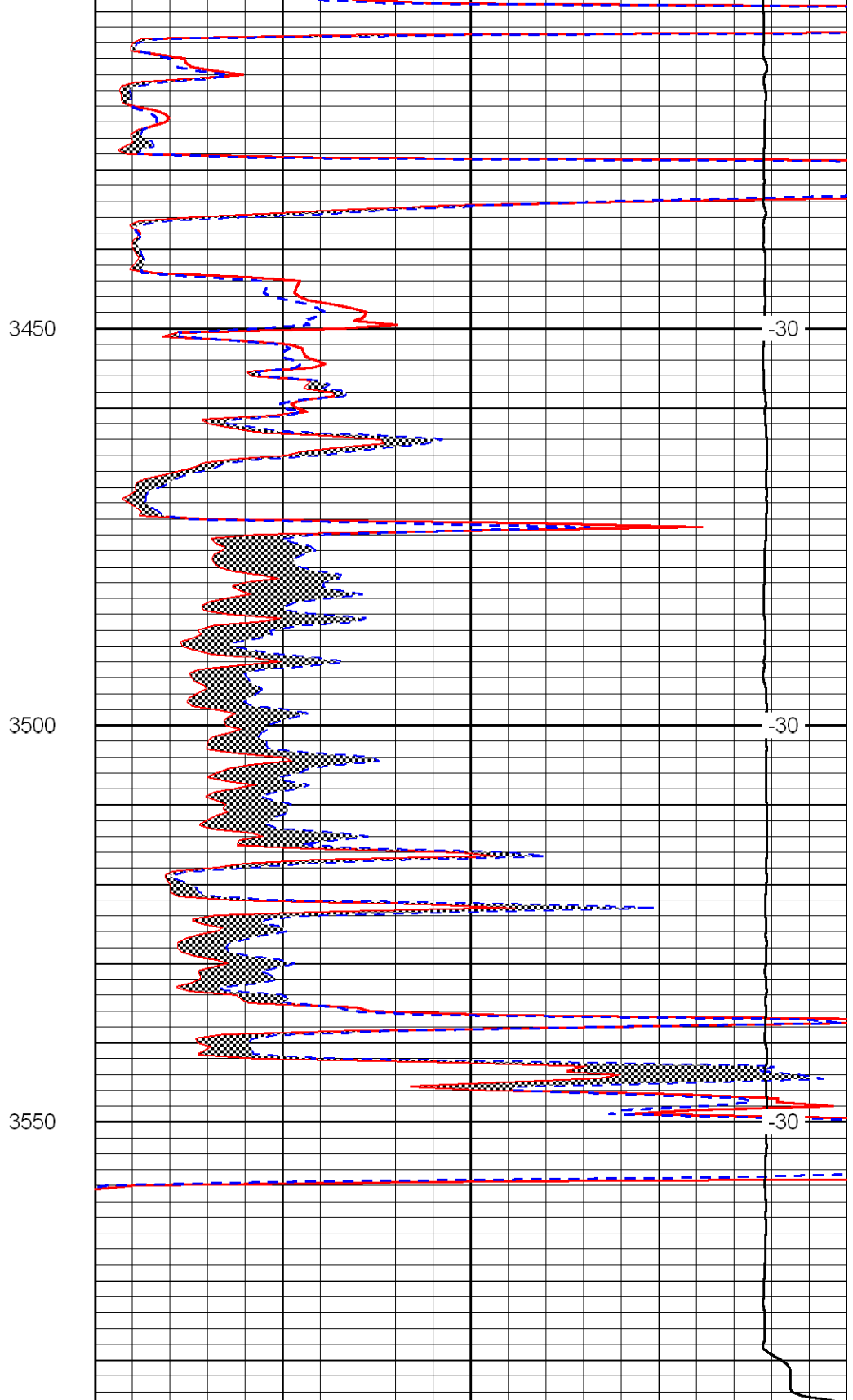
-31

-30

-30



0	Gamma Ray	150
6	Micro Log Caliper (in)	16
-200	SP (MV)	0



0	Micro Inverse 1 X 1 (Ohm-m)	40
0	Micro Normal 2'' (Ohm-m)	40
15000	Line Weight (lb)	0

LSPD  
(ft/min)