



## Dual Compensated Porosity Log

**DIGITAL LOG** (785) 625-3858

API No. 15-051-25,945-00-00	Company <b>Samuel Gary Jr &amp; Associates, Inc.</b>	Location <b>NW NE SE SE 1080' FSL &amp; 550' FEL</b>
	Well <b>Dome No.1-32</b>	Elevation 1874
	Field <b>Wildcat</b>	Other Services DIL MEL/BHCS
	County <b>Ellis</b>	
	State <b>Kansas</b>	
	Sec: <b>32</b>	Rge: <b>16W</b>
	Twp: <b>15S</b>	
Permanent Datum Log Measured From Drilling Measured From	Ground Level Kelly Bushing Kelly Bushing	K.B. 1883 D.F. G.L. 1874

Date	1/30/2010
Run Number	One
Type Log	CNL / CDL
Depth Driller	3580
Depth Logger	3578
Bottom Logged Interval	3557
Top Logged Interval	1700
Type Fluid In Hole	Chemical
Salinity, PPM CL	8,100
Density	9.3
Level	Full
Max. Rec. Temp. F	112
Operating Rig Time	5 Hours
Equipment -- Location	15 Hays
Recorded By	C. Desaire
Witnessed By	Tim Henrick

Borehole Record				Casing Record			
Run No	Bit	From	To	Size	Wgt.	From	To
1	12.25	00	1005	8.625	24#	00	1005
2	7.875	1005	3580				

<<< Fold Here >>>

All interpretations are opinions based on inferences from electrical or other measurements and we cannot and do not guarantee the accuracy or correctness of any interpretation, and we shall not, except in the case of gross or willful negligence on our part, be liable or responsible for any loss, costs, damages, or expenses incurred or sustained by anyone resulting from any interpretation made by any of our officers, agents or employees. These interpretations are also subject to our general terms and conditions set out in our current Price Schedule.

### Comments

Thank you for using Log-Tech, Inc.  
(785) 625-3858

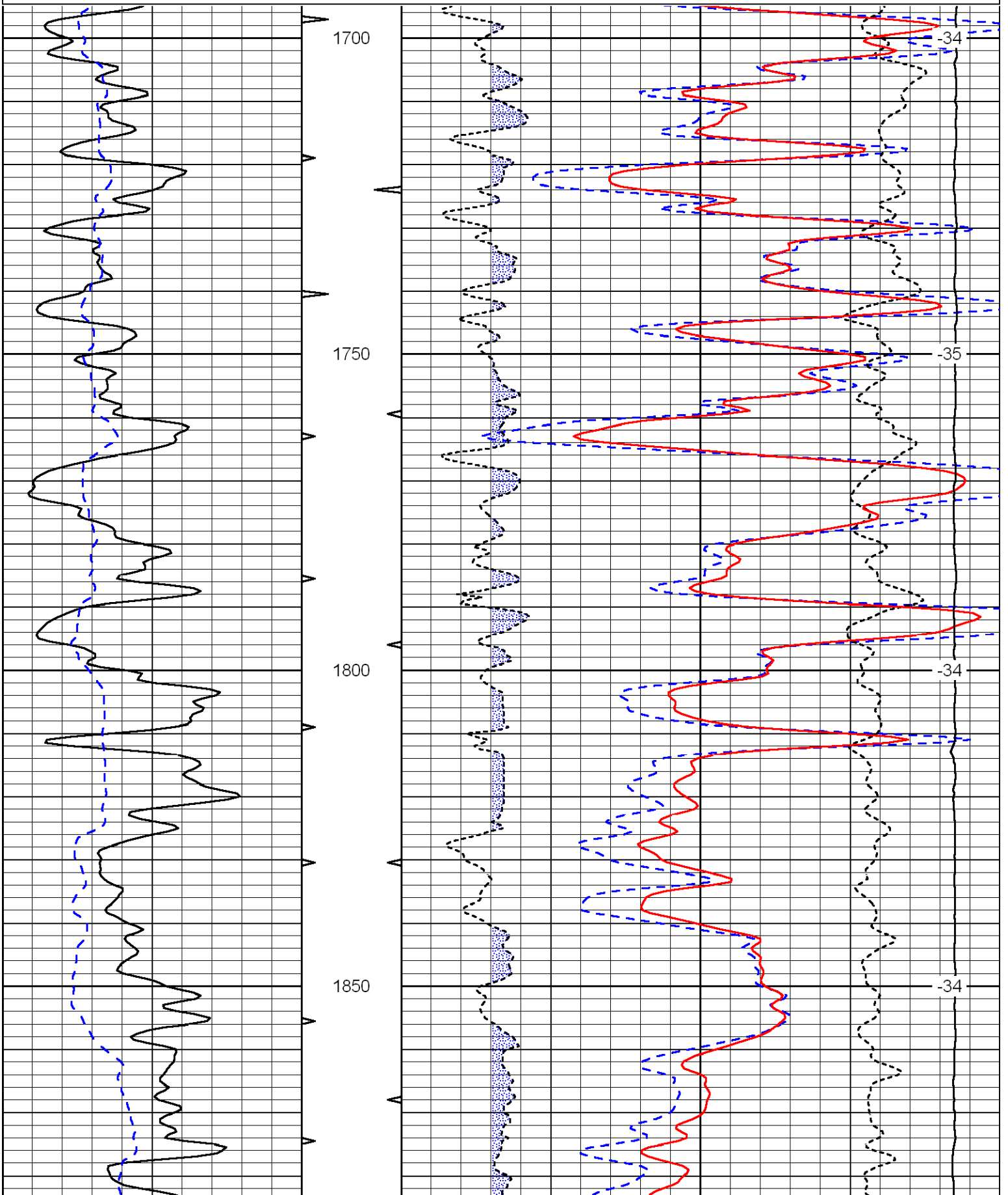
Pfeifer, 2 1/2 E to Vincent Rd,  
1/4 N, W Into

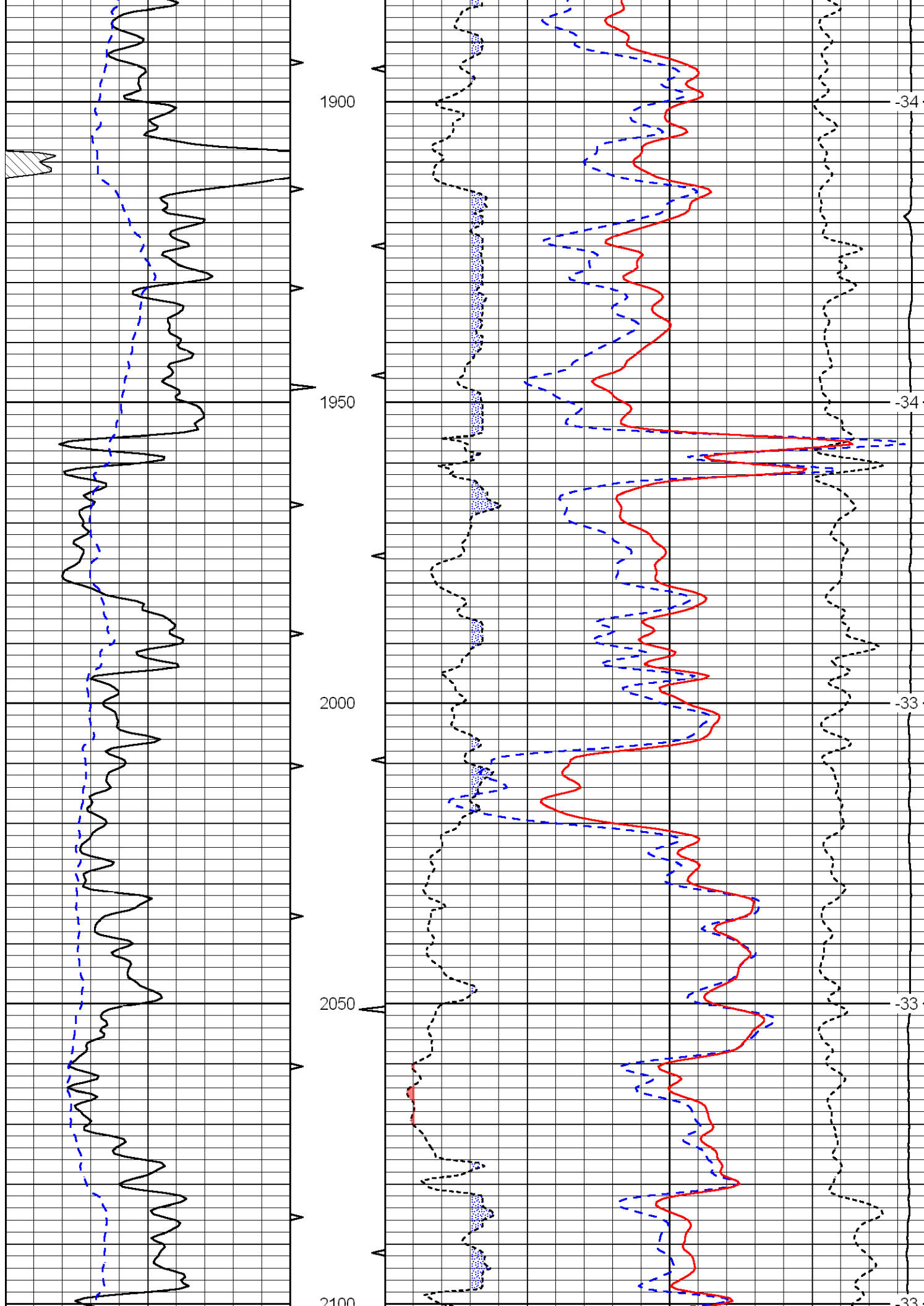
Database File: c:\warrior\backup of data\sam gary\_dome#1-32\samgaryhd.db  
 Dataset Pathname: dil/Stack  
 Presentation Format: cdl  
 Dataset Creation: Sat Jan 30 04:52:14 2010  
 Charted by: Depth in Feet scaled 1:240

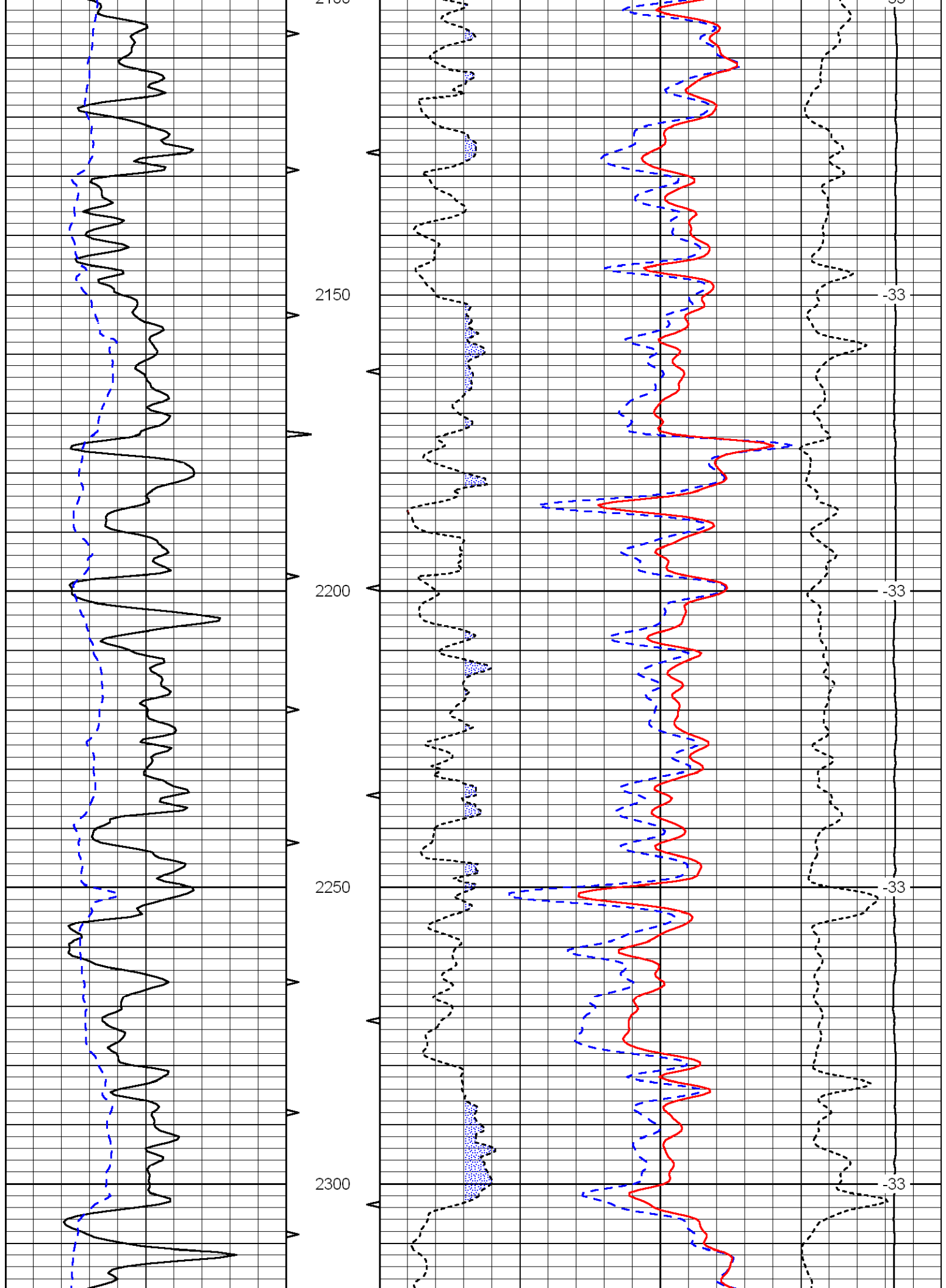
0	Gamma Ray	150
6	Caliper (in)	16

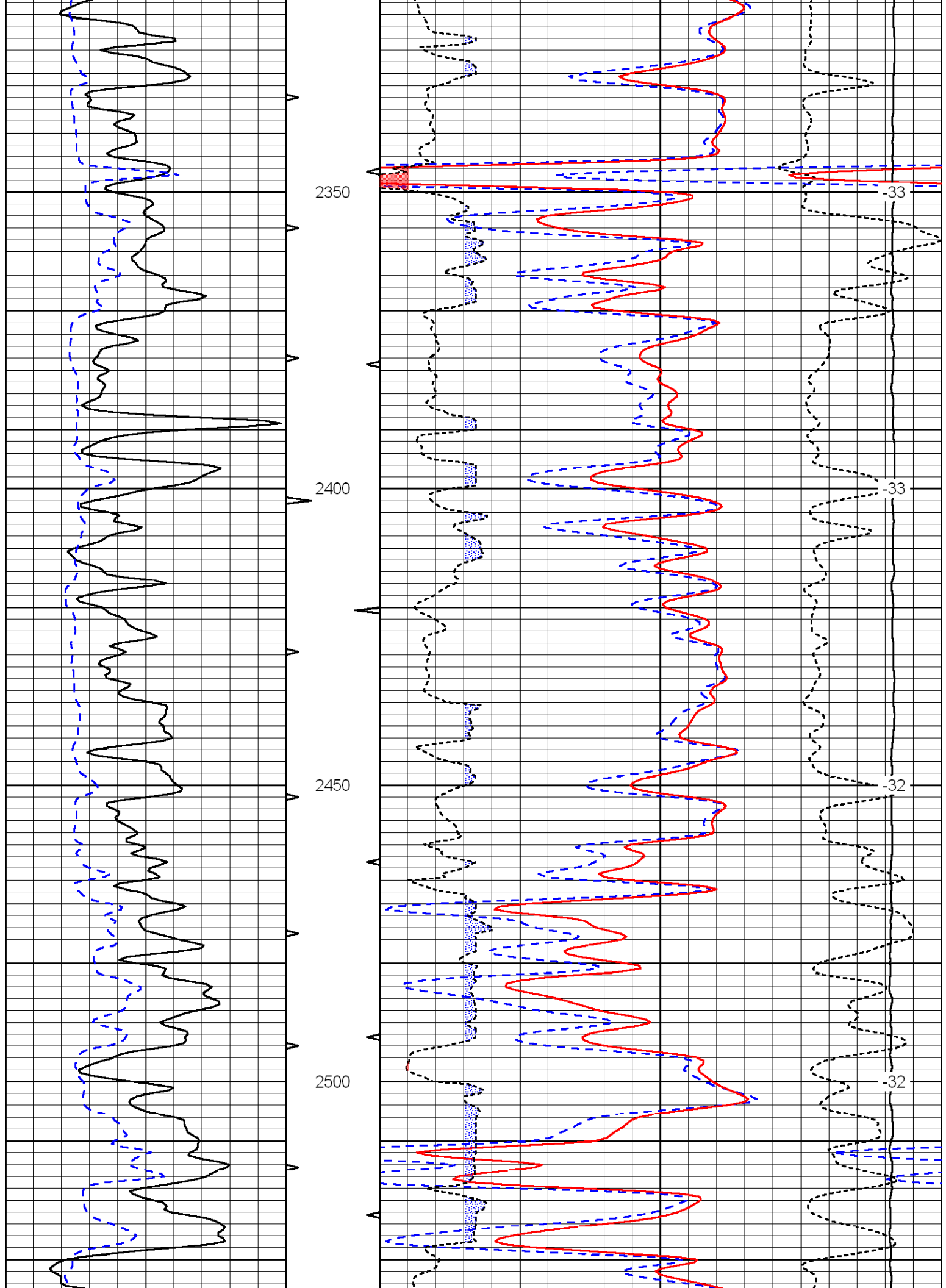
30	Compensated Density (pu)			-10	
2	Bulk Density (g/cc)			3	
15000	Line Tension (lb)			0	
2.625	DGA (g/cc)	3.425	-0.25	Correction (g/cc)	0.25

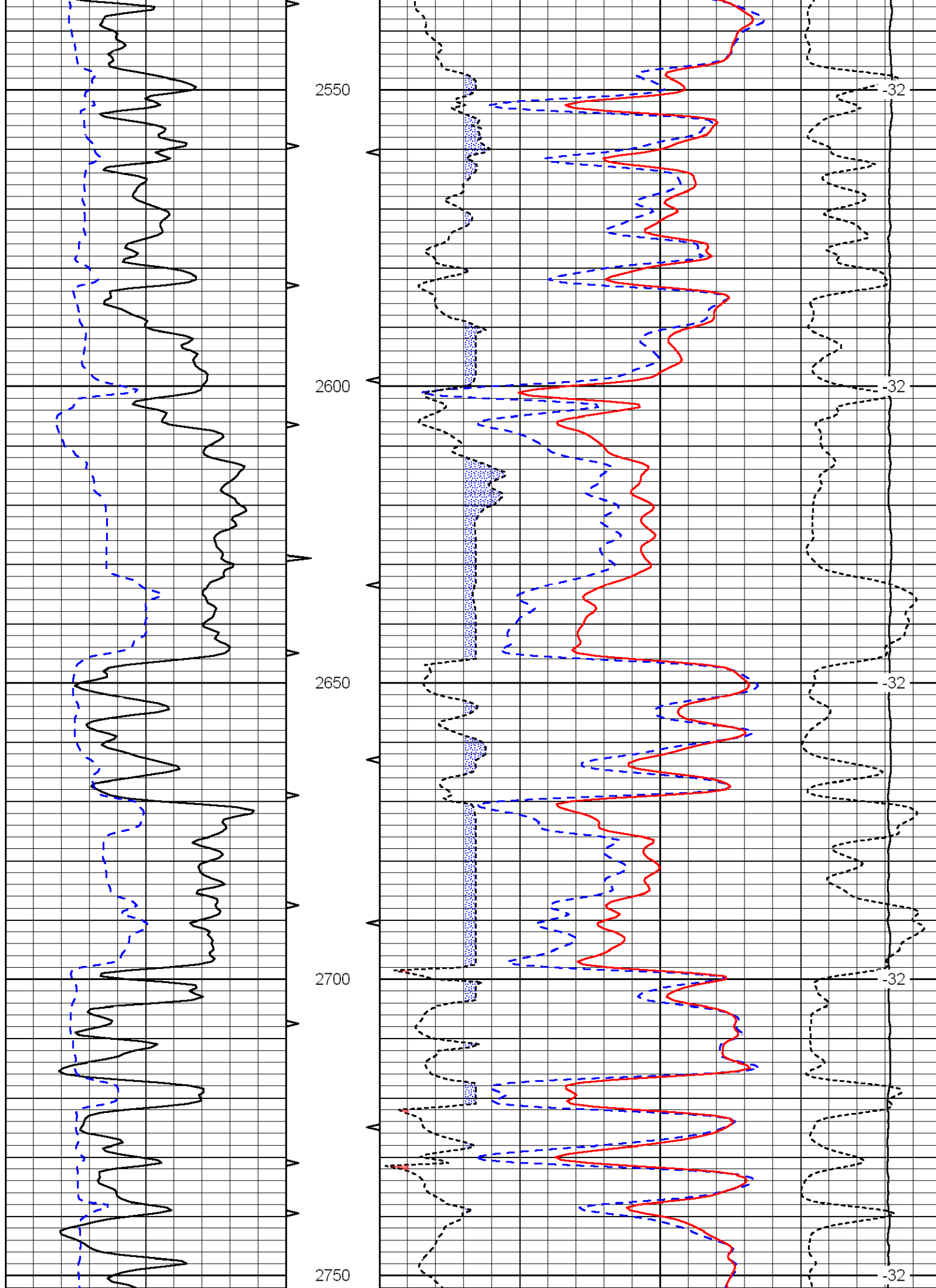
LSPD  
(ft/min)

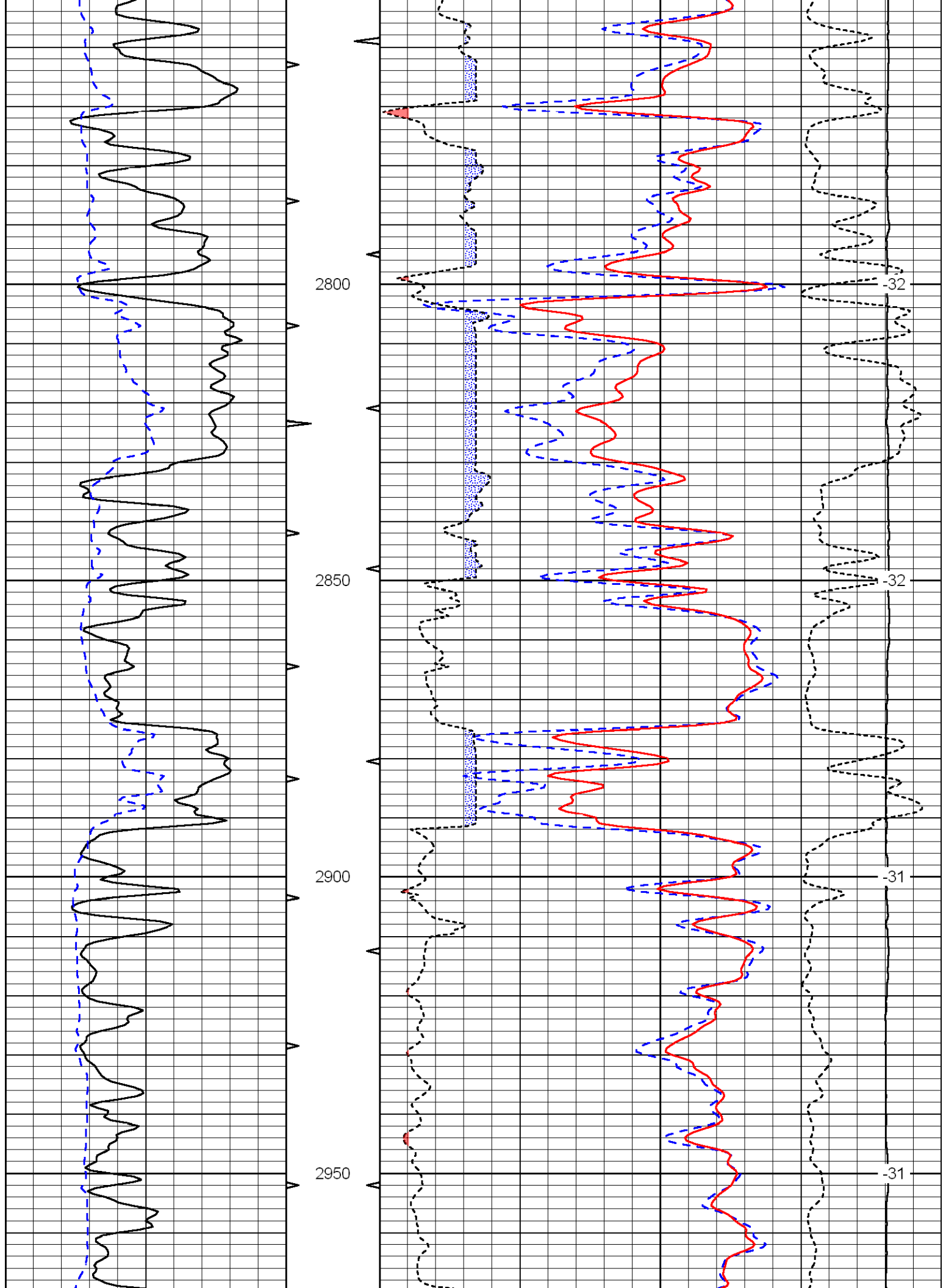


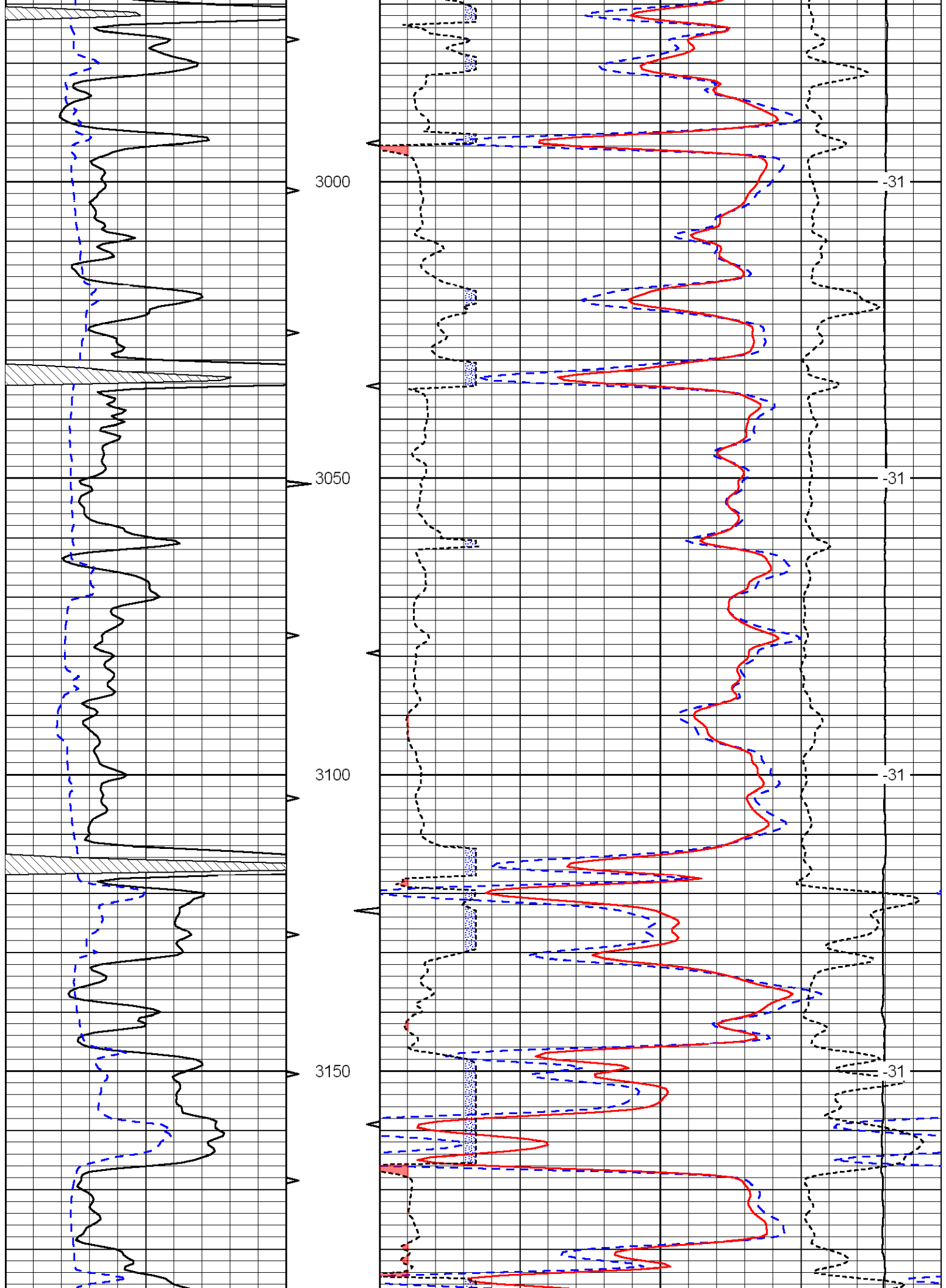


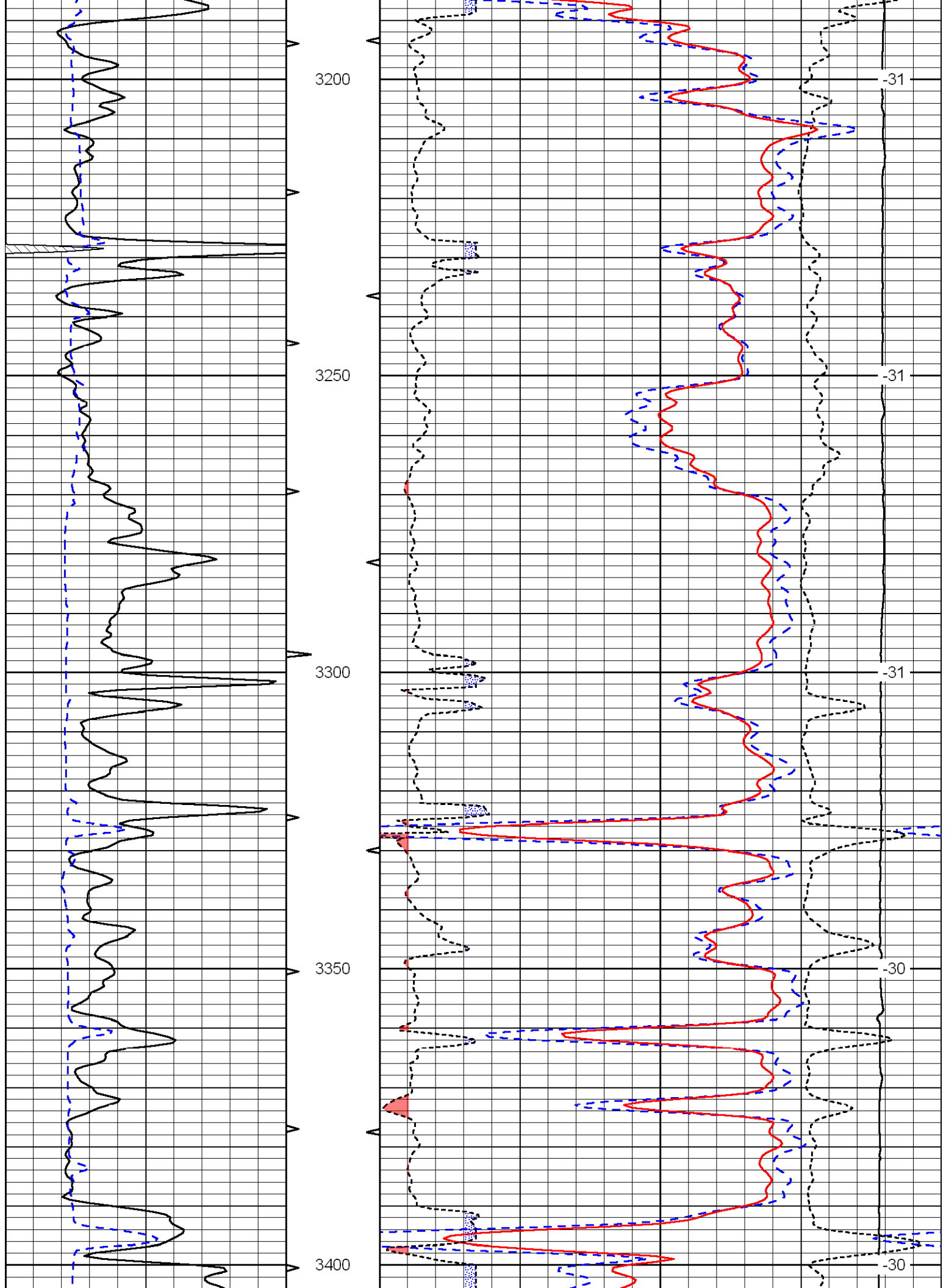


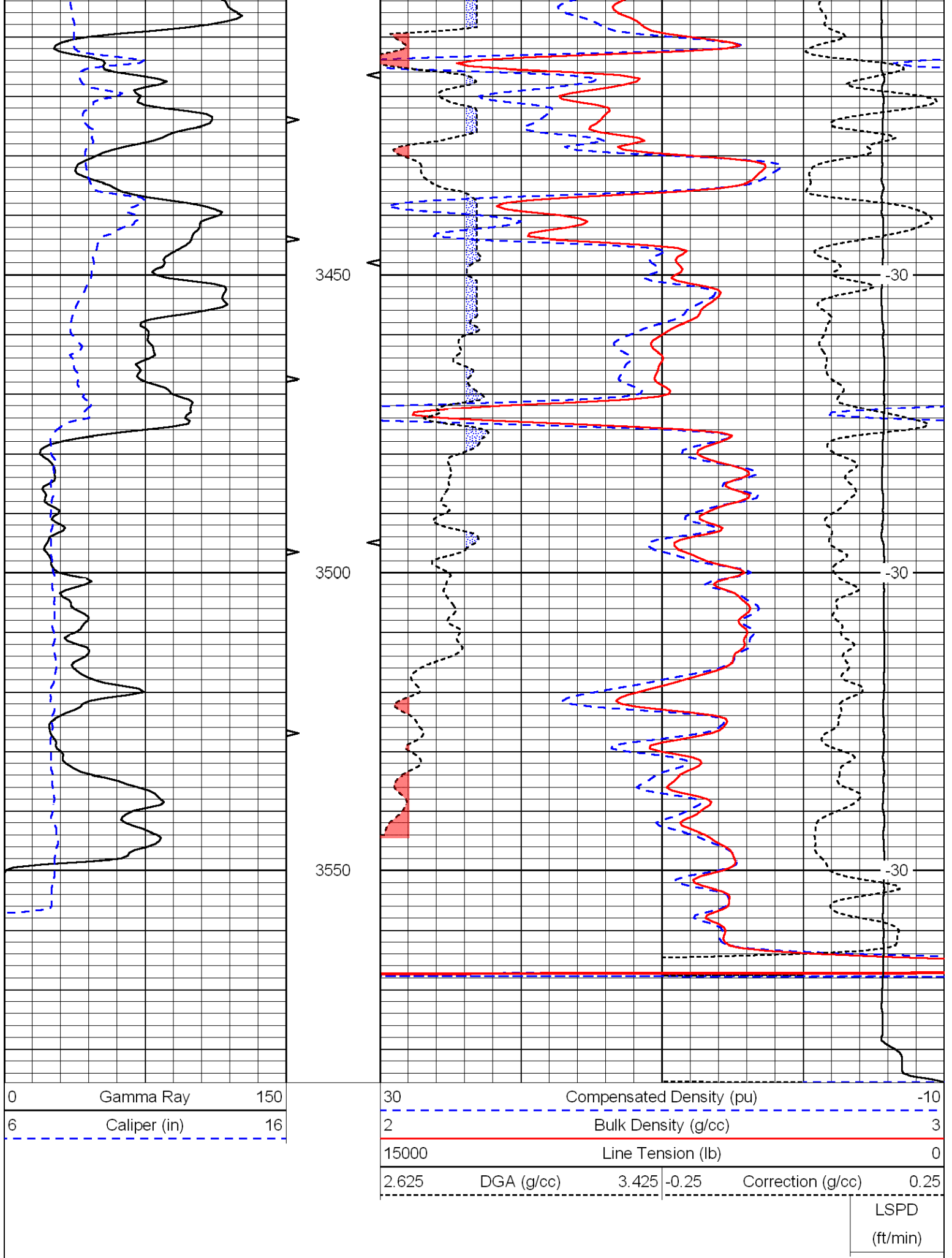












0 Gamma Ray 150

6 Caliper (in) 16

30 Compensated Density (pu) -10

2 Bulk Density (g/cc) 3

15000 Line Tension (lb) 0

2.625 DGA (g/cc) 3.425 -0.25 Correction (g/cc) 0.25

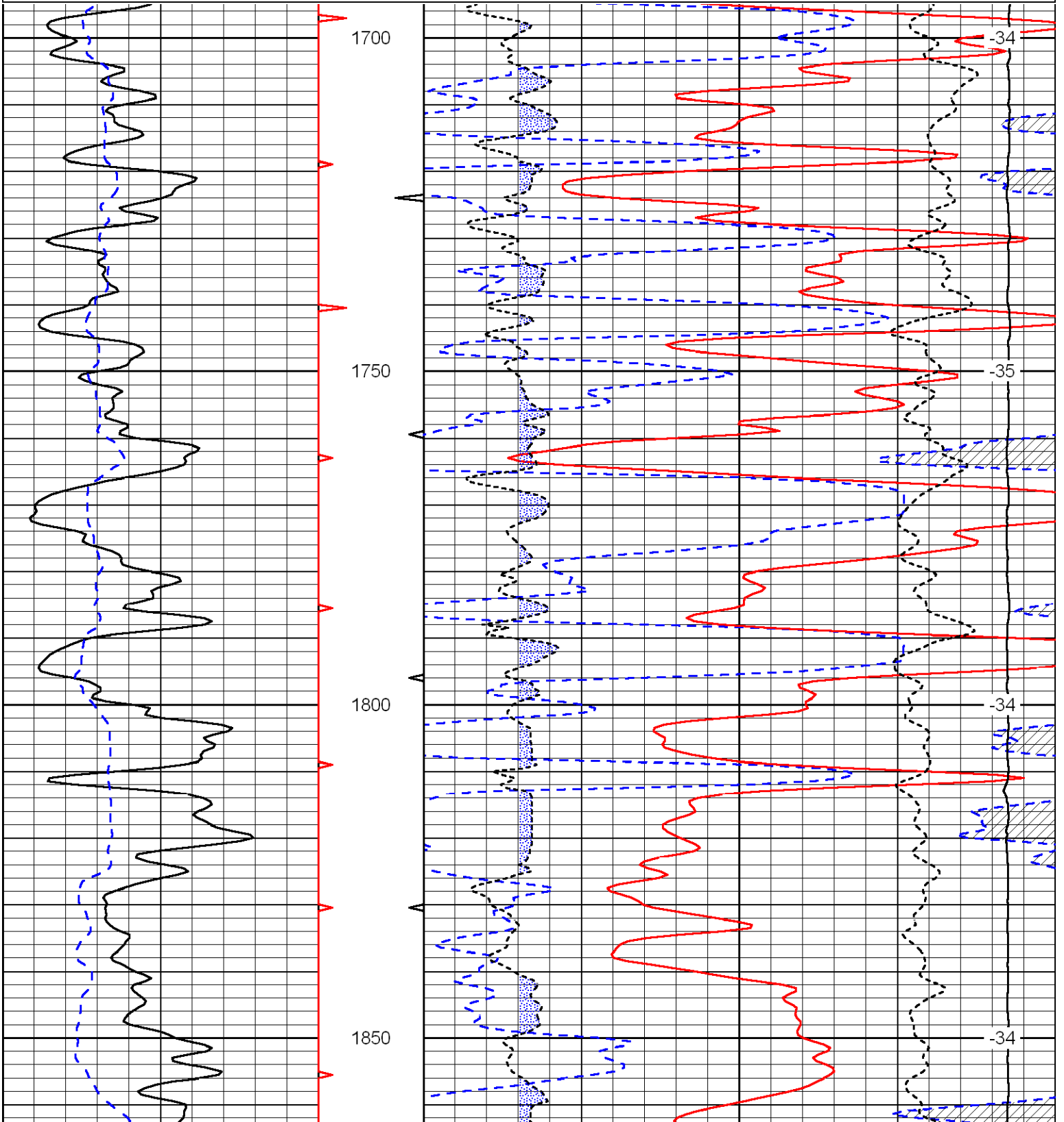
LSPD  
(ft/min)

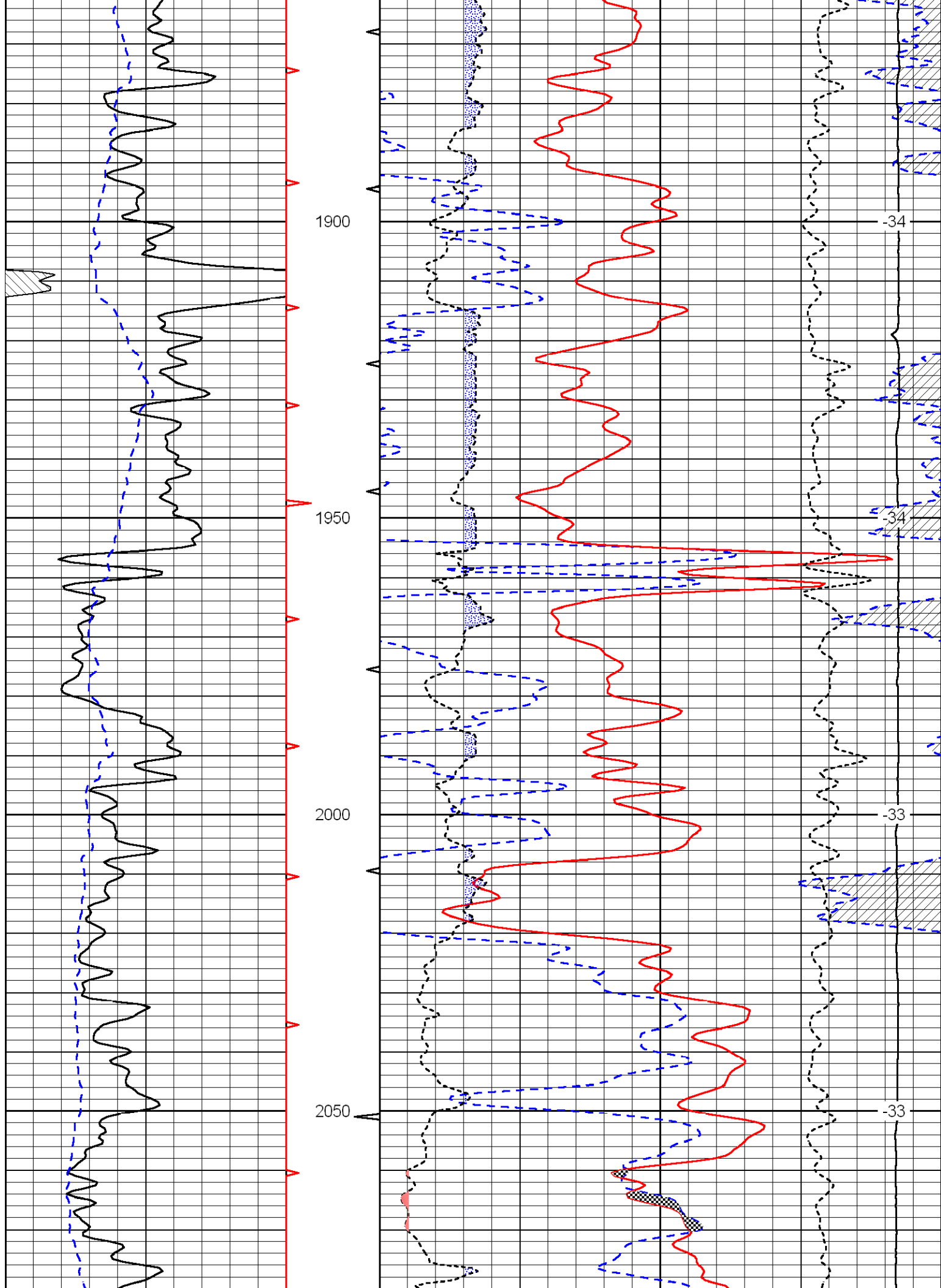
Database File: c:\warrior\backup of data\sam gary\_dome#1-32\samgaryhd.db  
 Dataset Pathname: dil/Stack  
 Presentation Format: cndlspec  
 Dataset Creation: Sat Jan 30 04:52:14 2010  
 Charted by: Depth in Feet scaled 1:240

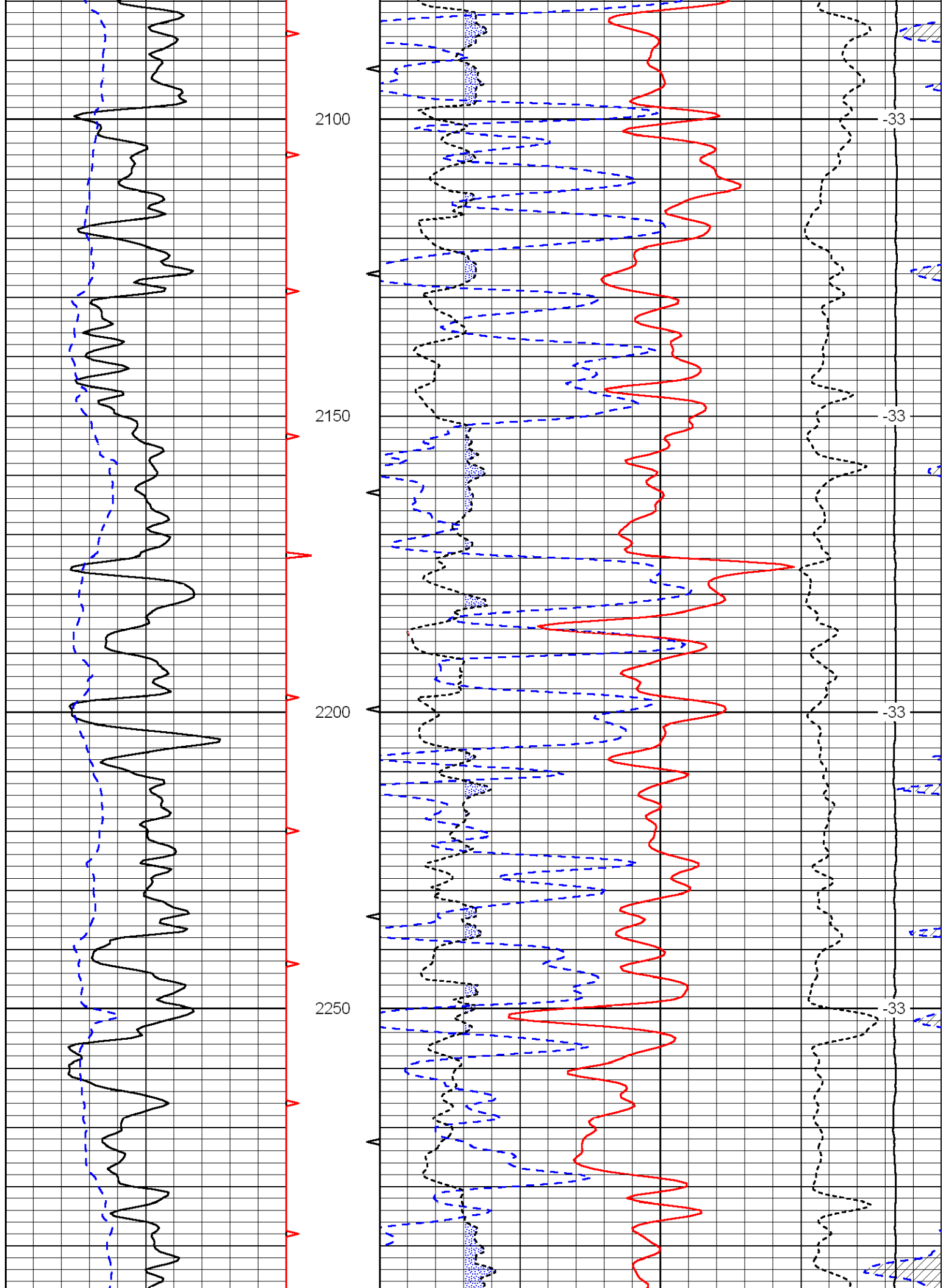
0	Gamma Ray	150
6	Caliper (in)	16

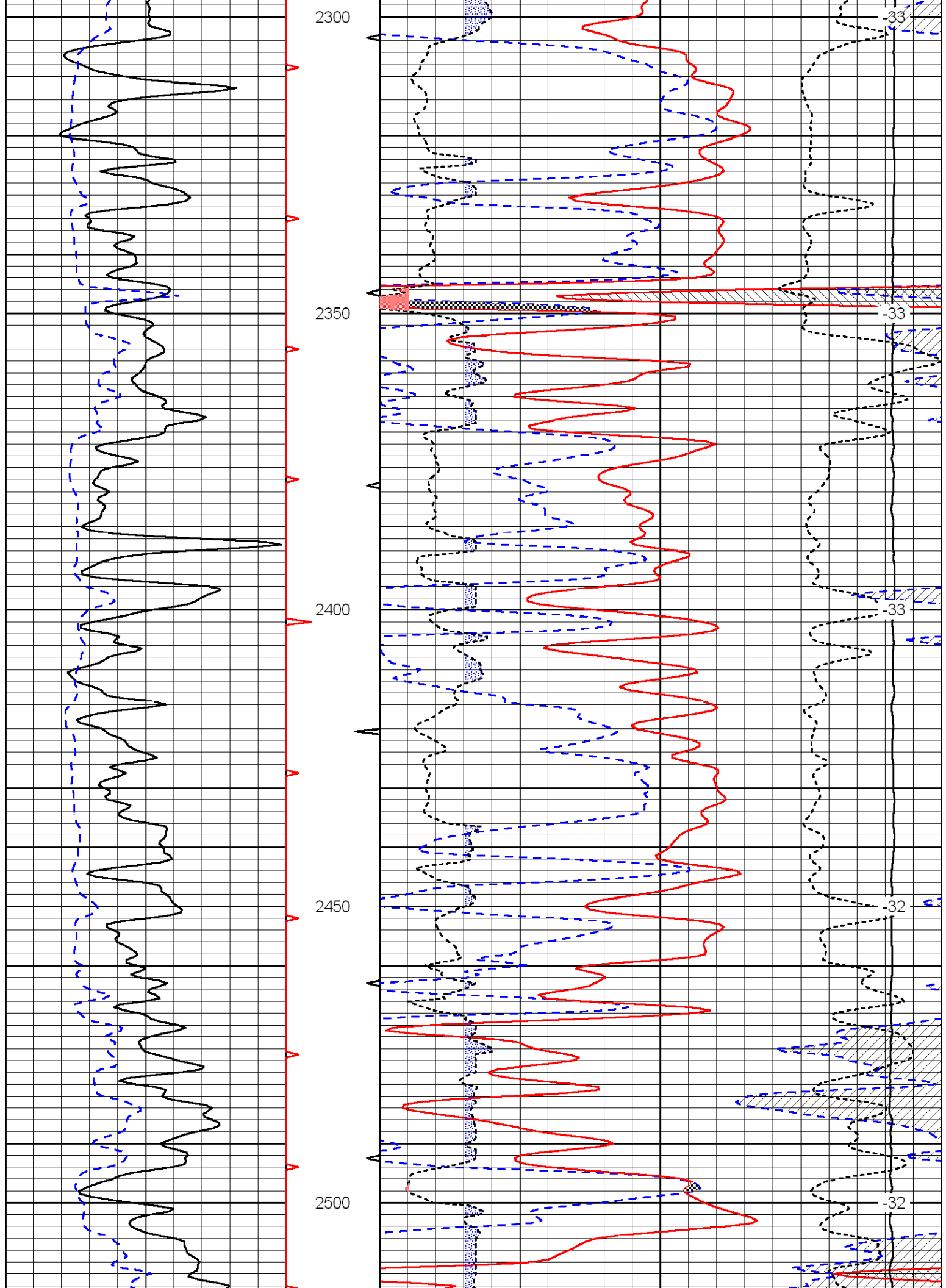
30	Compensated Neutron (Limestone) (pu)			-10	
30	Compensated Density (2.71 ma) (pu)			-10	
2.625	DGA (g/cc)	3.425	-0.25	Correction (g/cc)	0.25
15000	Line Tension (lb)			0	

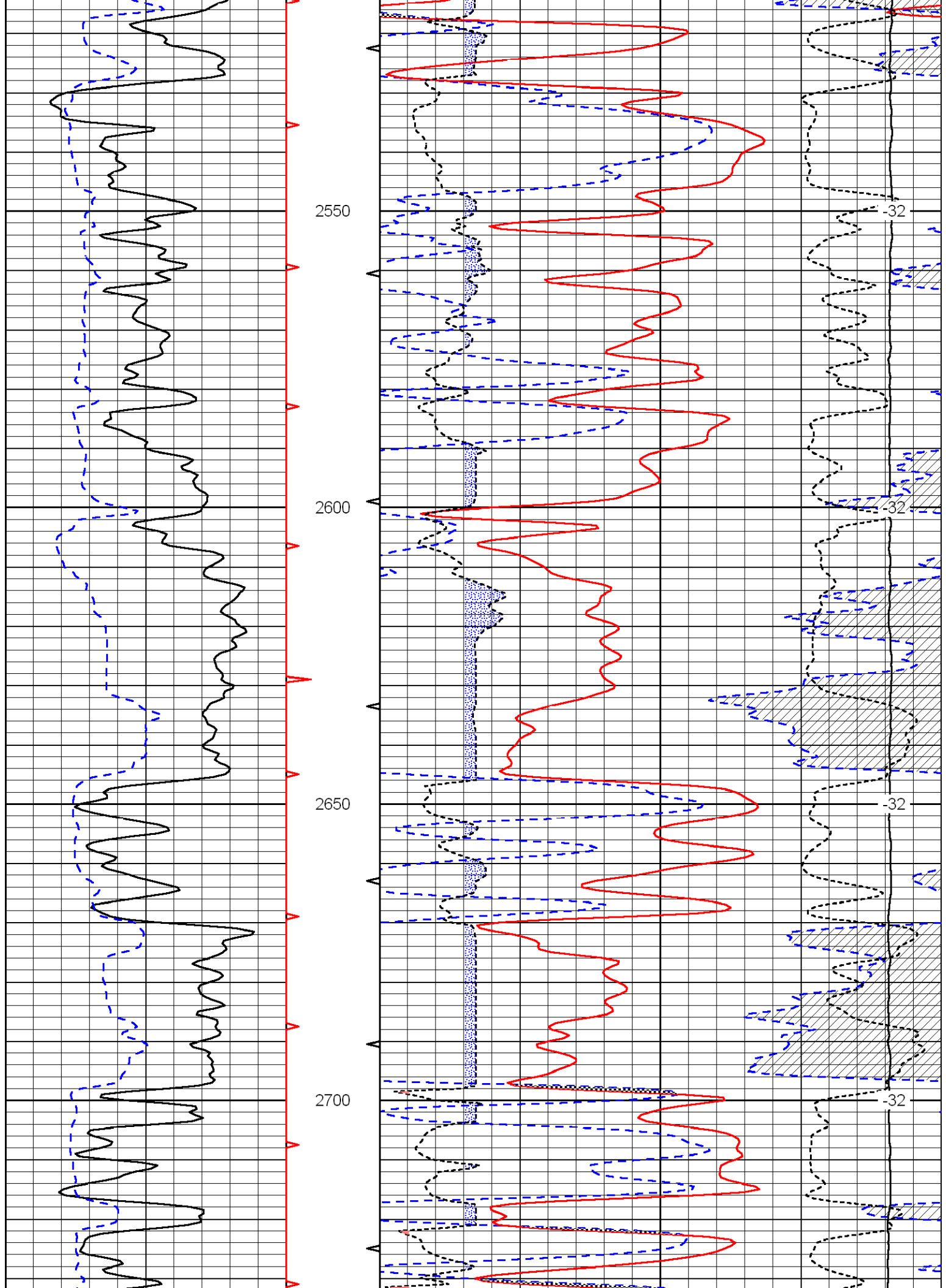
LSPD  
(ft/min)

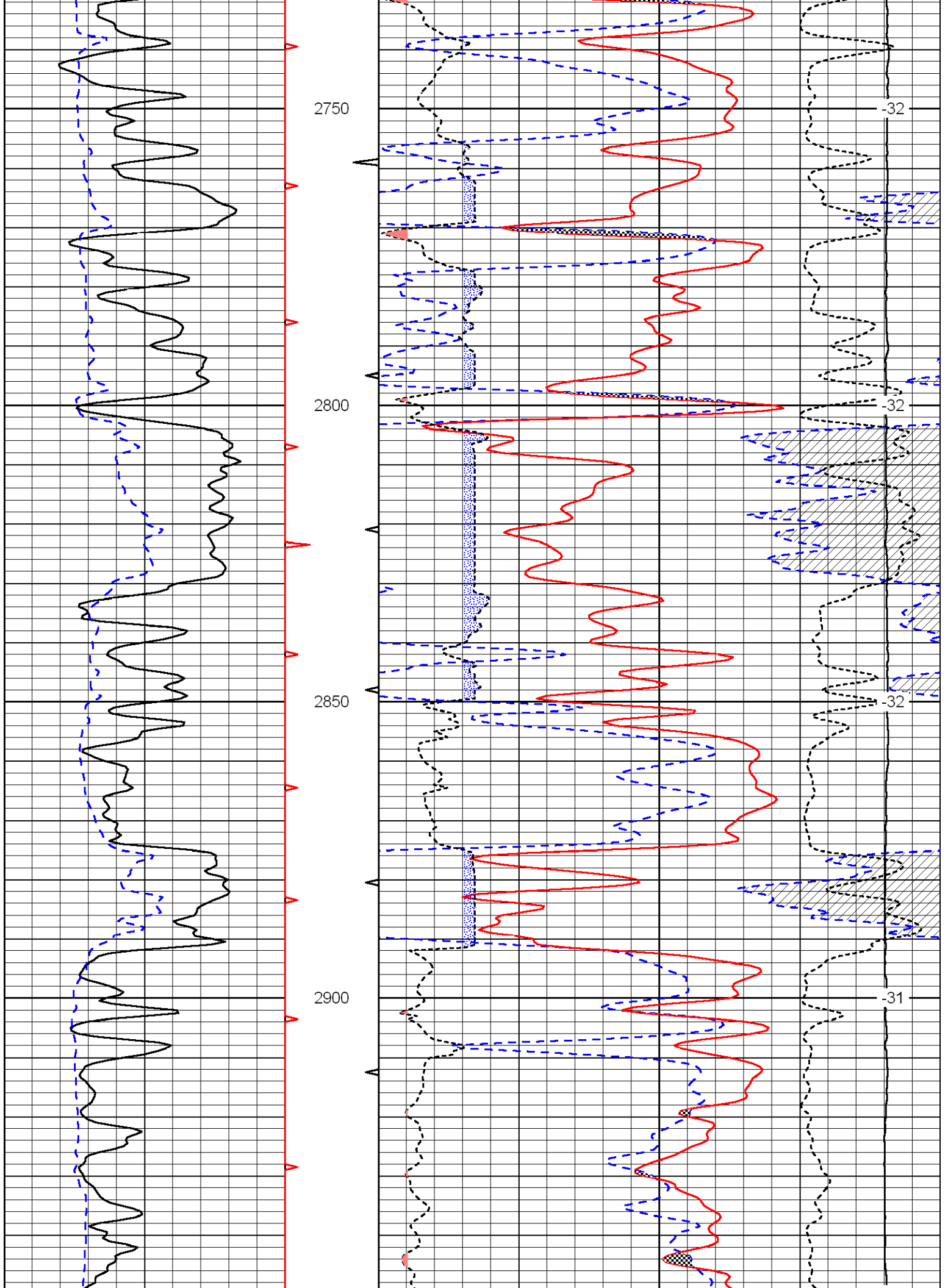


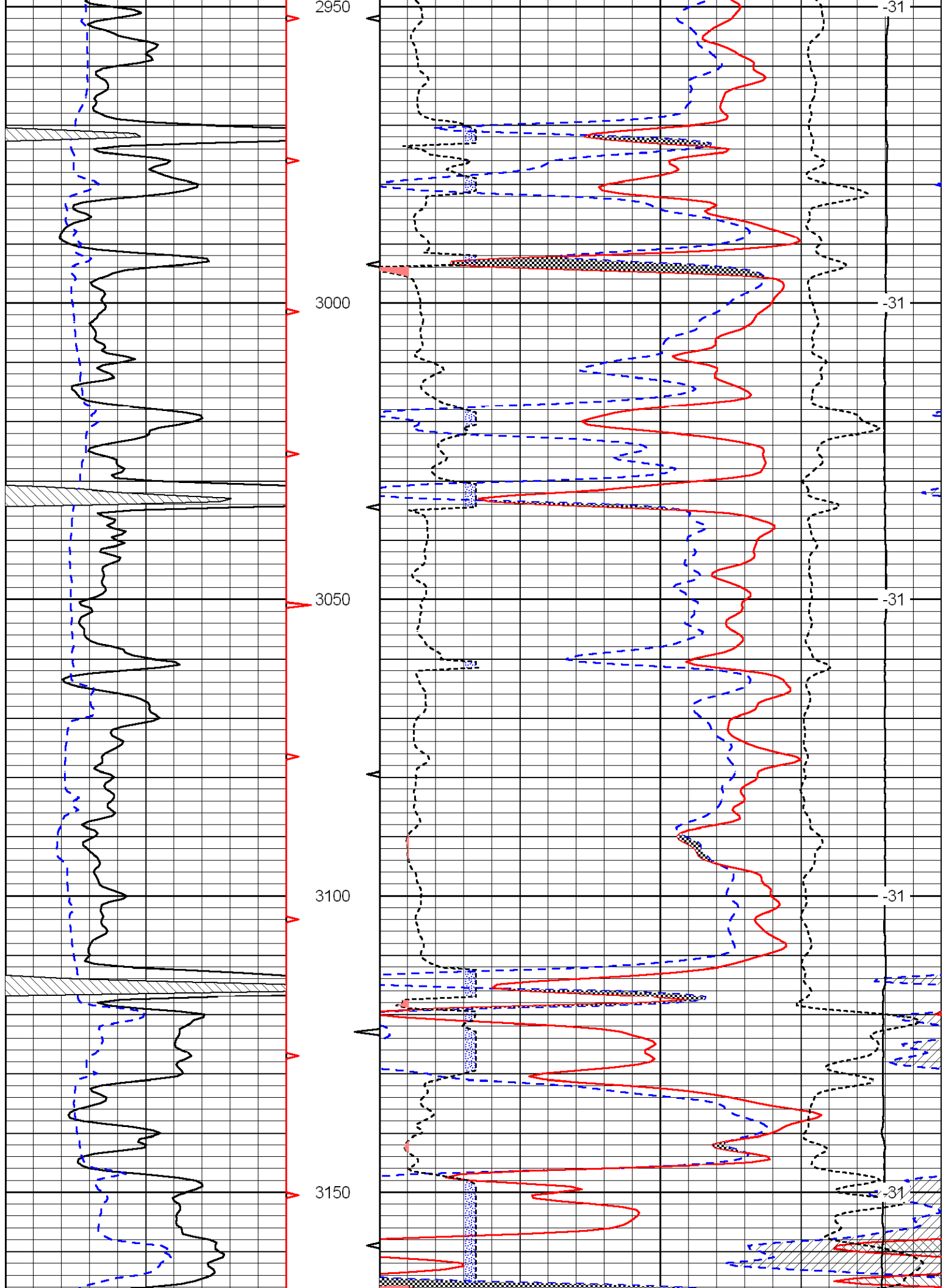


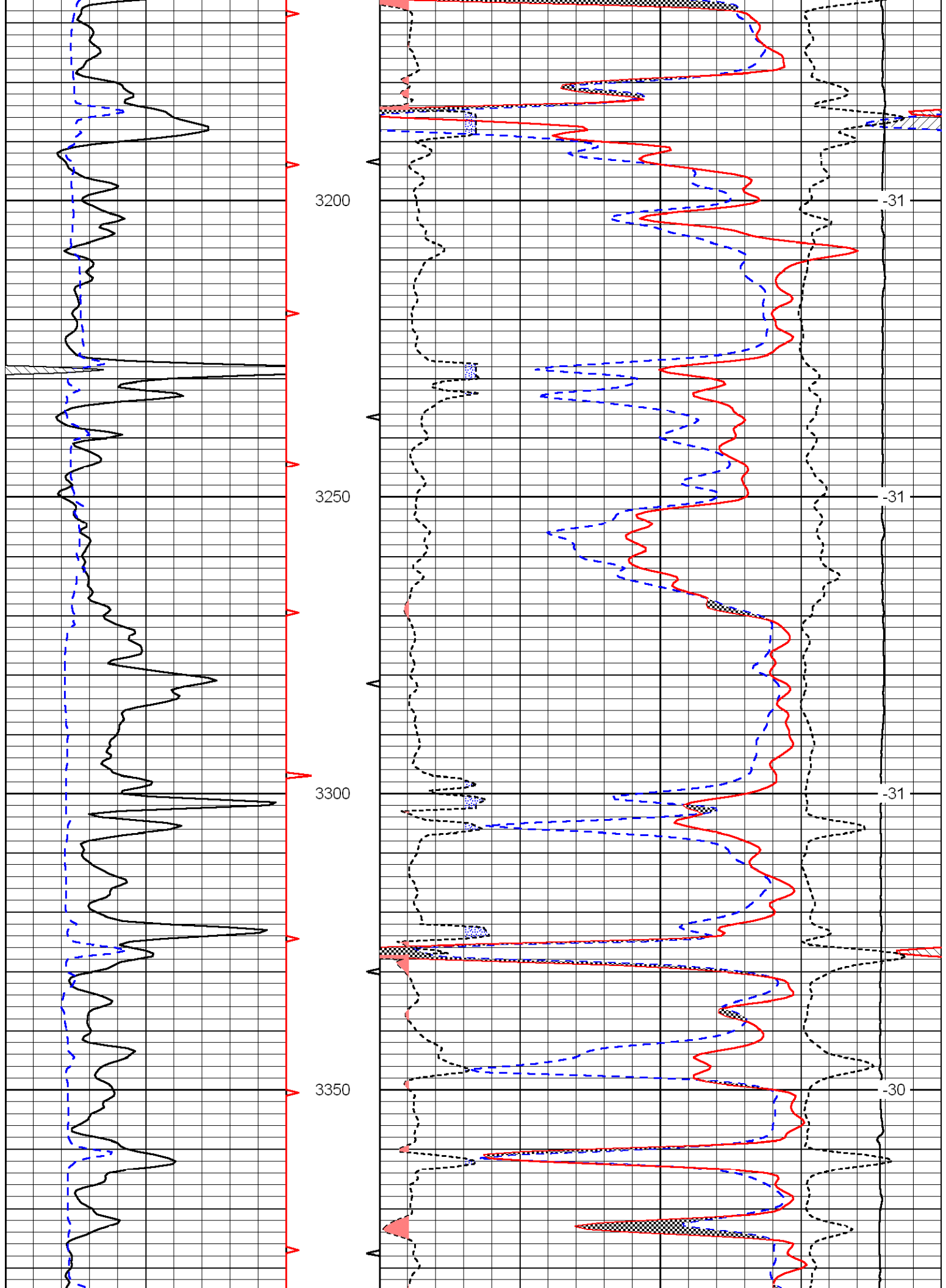


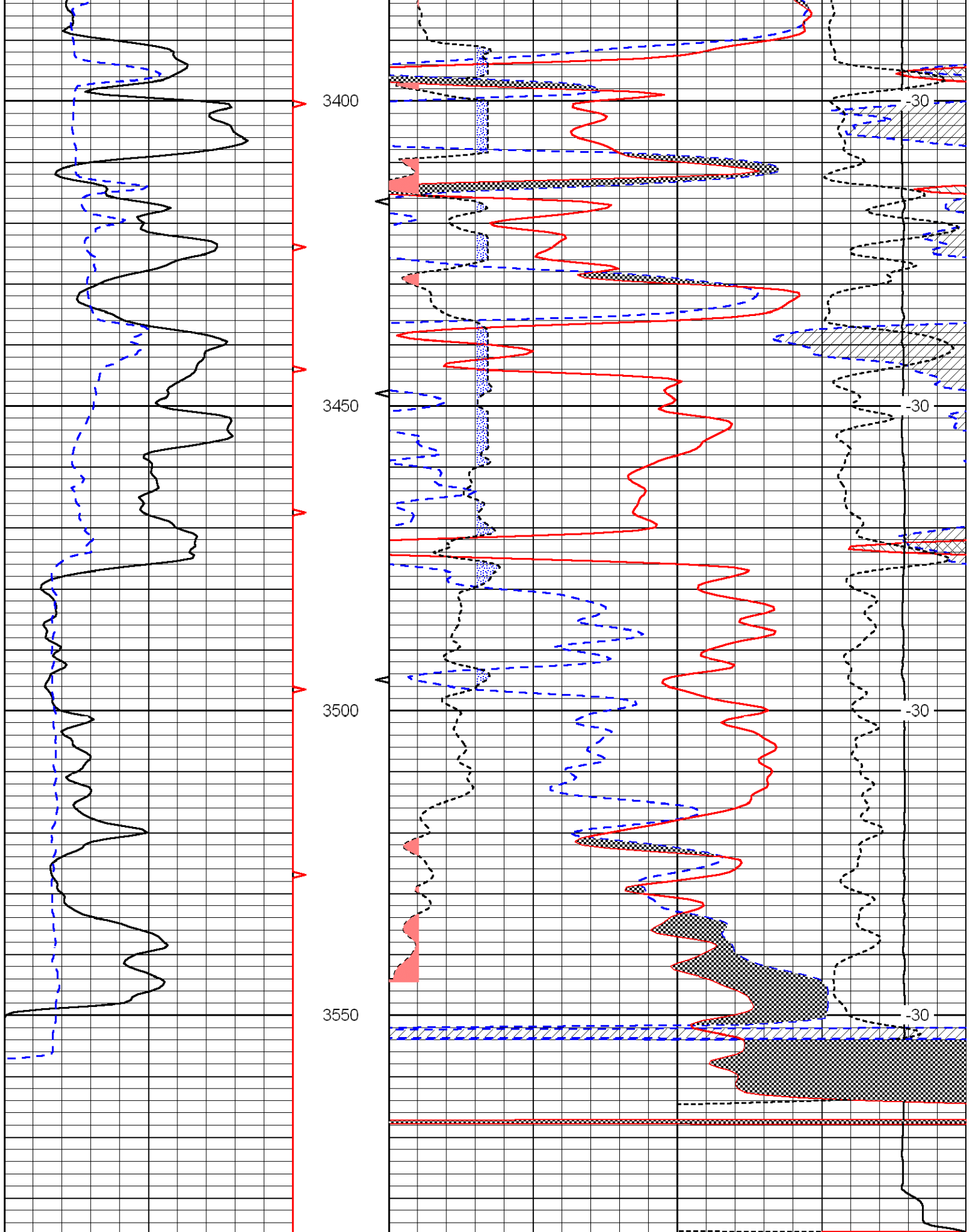












0	Gamma Ray	150
6	Caliper (in)	16

30	Compensated Neutron (Limestone) (pu)	-10
30	Compensated Density (2.71 ma) (pu)	-10

2.625	DGA (g/cc)	3.425	-0.25	Correction (g/cc)	0.25
-------	------------	-------	-------	-------------------	------

15000

Line Tension (lb)

0

LSPD  
(ft/min)