



**Borehole Compensated  
Sonic Log**

**DIGITAL LOG (785) 625-3858**

API No. 15-009-25,287-00-00	Company <b>LB Exploration, Inc.</b>	Location <b>NW SE SW NW 2260' FNL &amp; 900' FWL</b>	Other Services CNL/CDL MEL/DIL
Well <b>Bieberle No.1</b>	County <b>Barton</b>		
Field <b>Wildcat</b>	State <b>Kansas</b>		
Sec: <b>18</b>	Twp: <b>18S</b>	Rge: <b>11W</b>	

Permanent Datum Log Measured From Drilling Measured From	Ground Level Kelly Bushing Kelly Bushing	Elevation 1813 7 Ft. Above Perm. Datum	K.B. D.F. G.L.	1820 1813 1813
--	--	---	----------------------	----------------------

Date	9/9/2009
Run Number	Two
Type Log	BHC Sonic
Depth Driller	3480
Depth Logger	3480
Bottom Logged Interval	3469
Top Logged Interval	300
Type Fluid In Hole	Chemical
Salinity, PPM CL	4,800
Density	9.3
Level	Full
Max. Rec. Temp. F	111
Operating Rig Time	4 Hours
Equipment -- Location	15 Hays
Recorded By	C. Desaire
Witnessed By	Jim Musgrove

Run No	Bit	Borehole Record		Casing Record	
		From	To	From	To
1	12.25	00	323	8.625	24#
2	7.875	323	3480		

<<< Fold Here >>>

All interpretations are opinions based on inferences from electrical or other measurements and we cannot and do not guarantee the accuracy or correctness of any interpretation, and we shall not, except in the case of gross or willful negligence on our part, be liable or responsible for any loss, costs, damages, or expenses incurred or sustained by anyone resulting from any interpretation made by any of our officers, agents or employees. These interpretations are also subject to our general terms and conditions set out in our current Price Schedule.

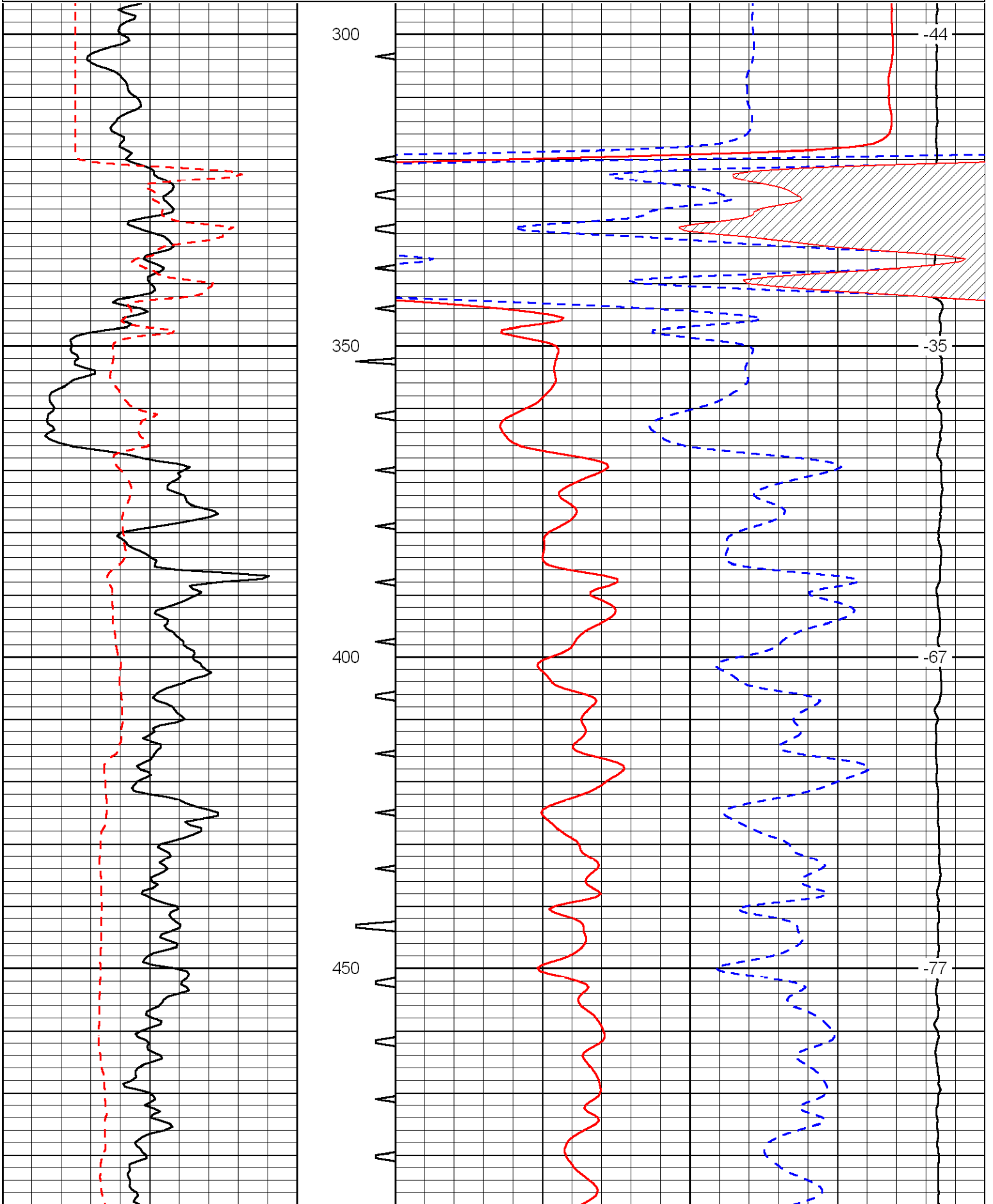
**Comments**

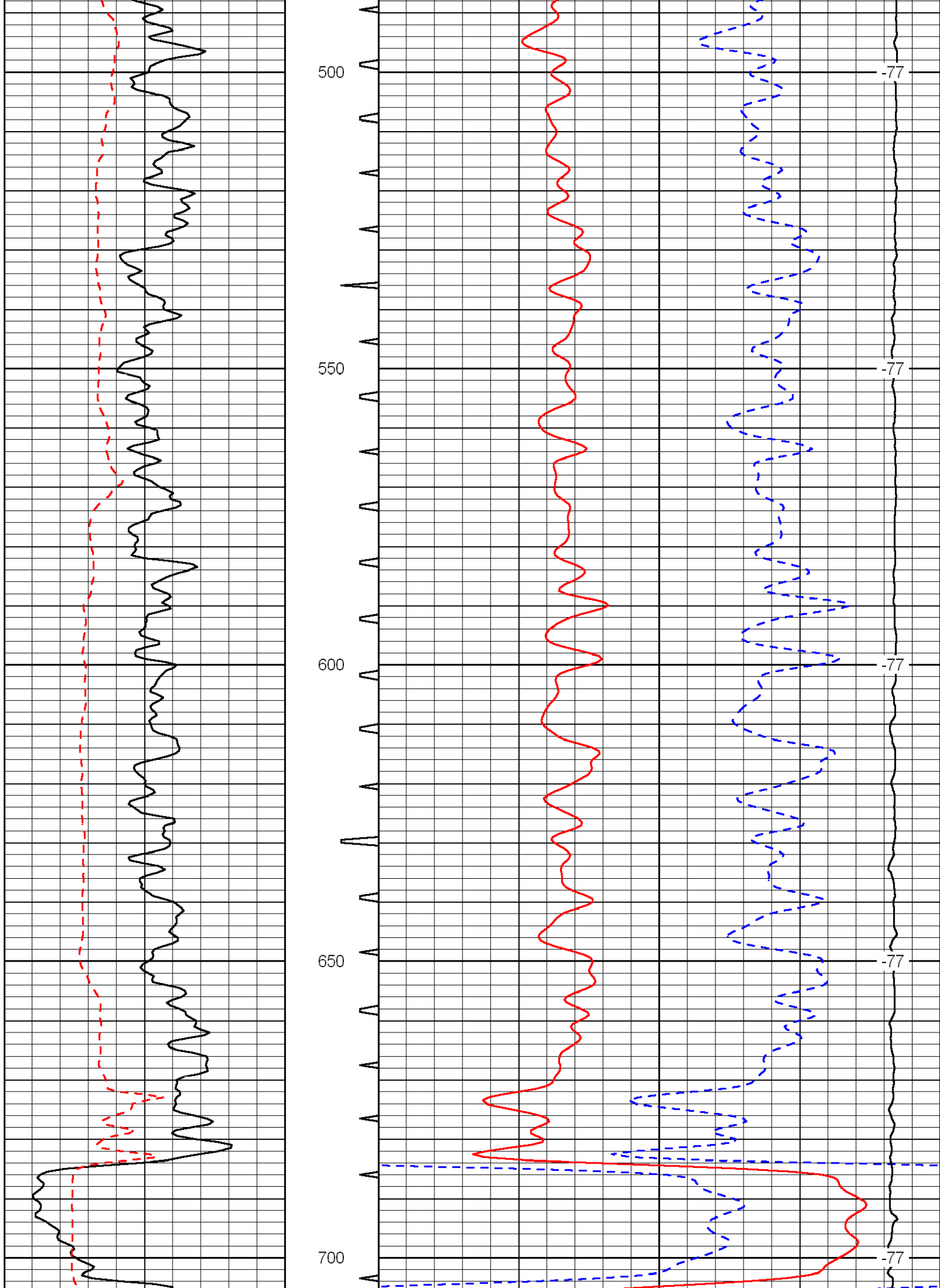
Thank you for using Log-Tech, Inc.  
(785) 625-3858

Clafin, 2 W to Camp Aldrich Rd, 2.1 S, E Into

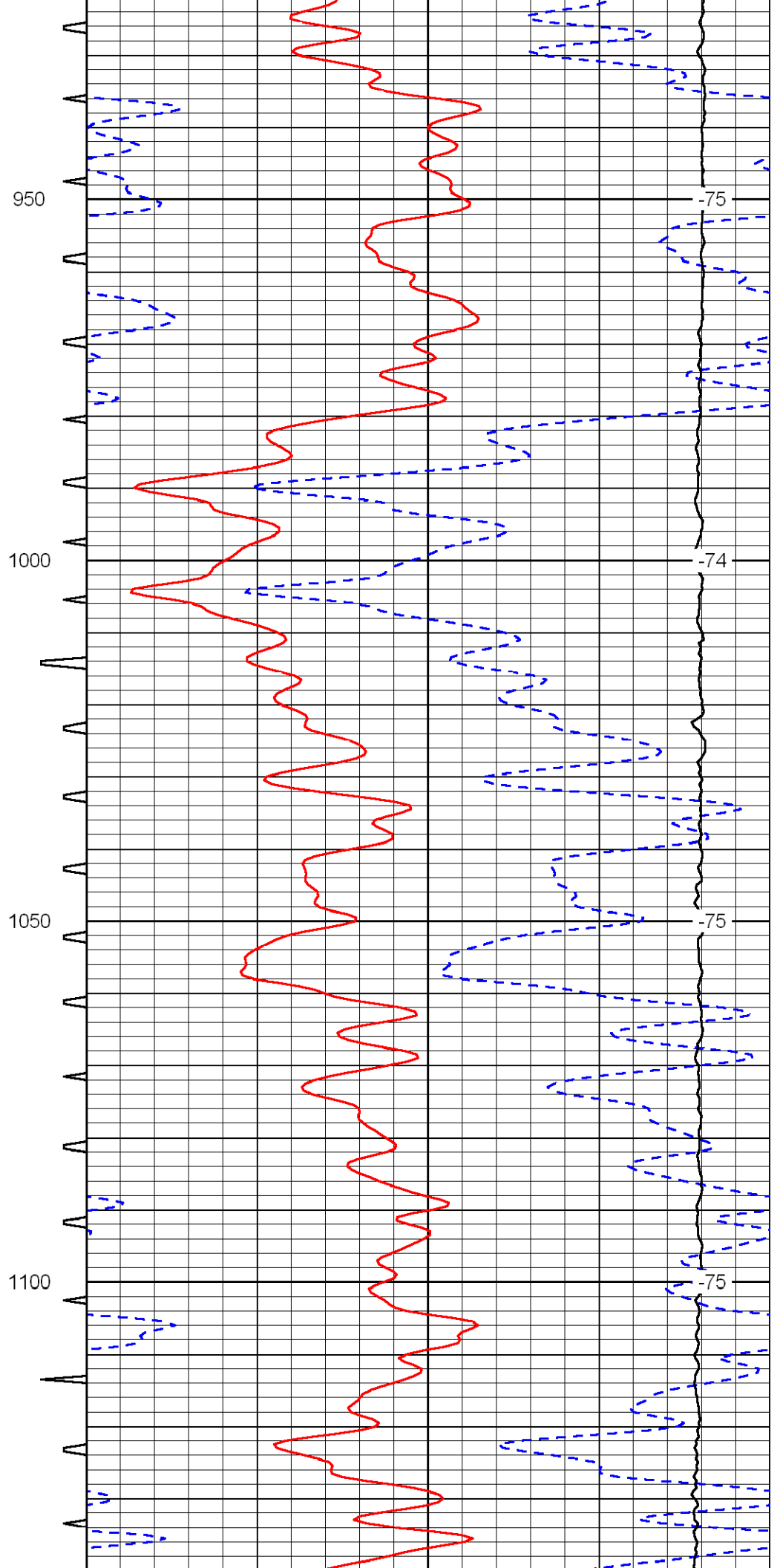
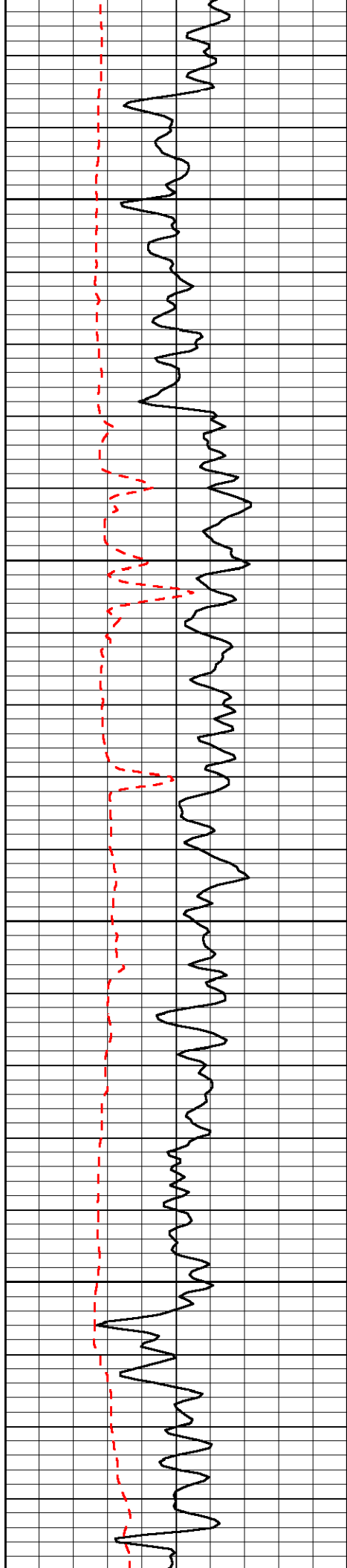
Database File: c:\warrior\data\lb exploration\_bieberle no.1\bhd.db  
 Dataset Pathname: dil/lbstk  
 Presentation Format: sonic  
 Dataset Creation: Wed Sep 09 08:25:59 2009  
 Charted by: Depth in Feet scaled 1:240

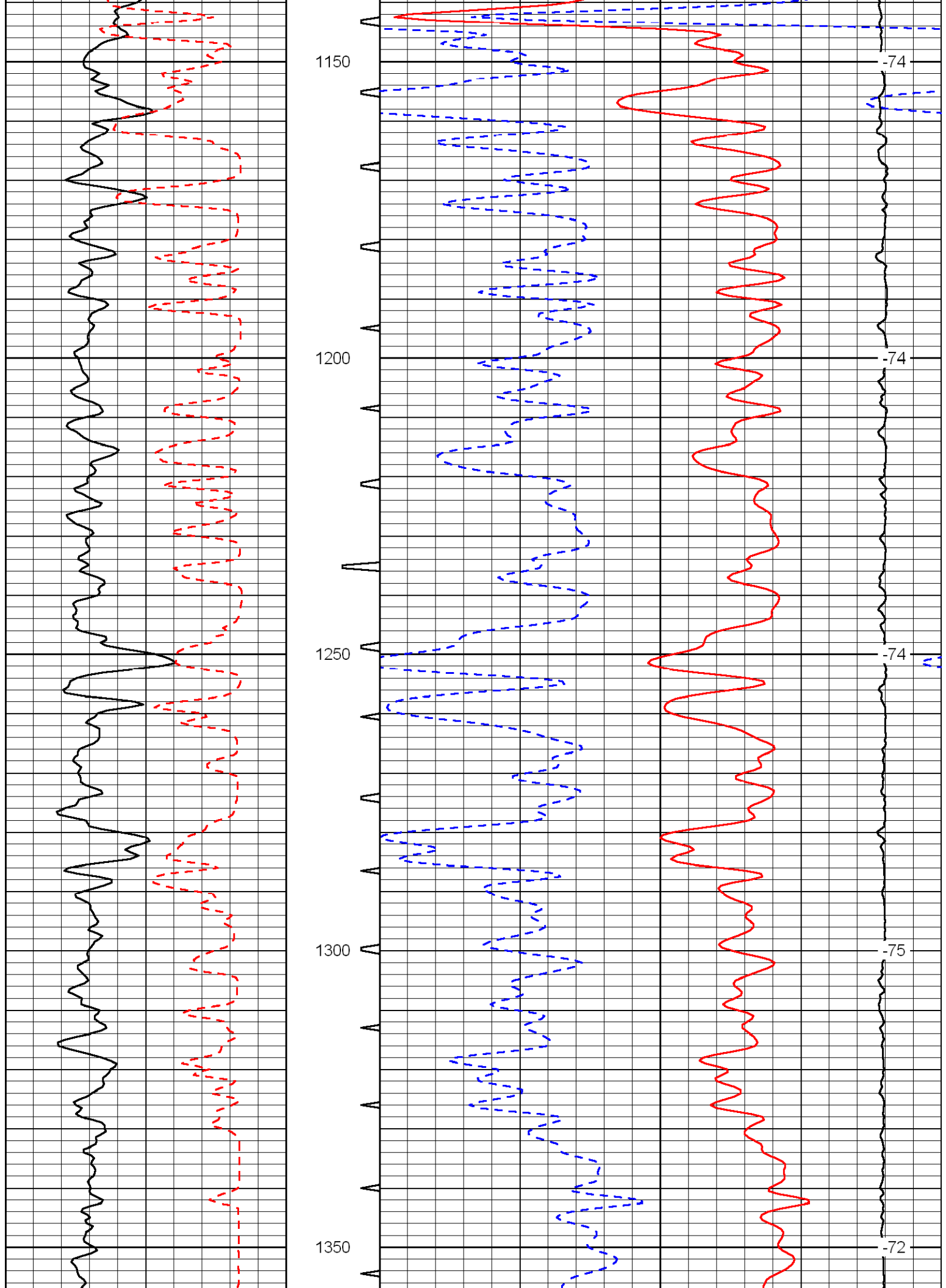
0	Gamma Ray	150	Sonic Int	140	Delta Time (usec/ft) (usec/ft)	40
150	Gamma Ray	300	5 (msec)	0	SPOR (pu)	-10
6	Caliper (in)	16		10000	LTEN (lb) (lb)	0
						LSPD (ft/min)

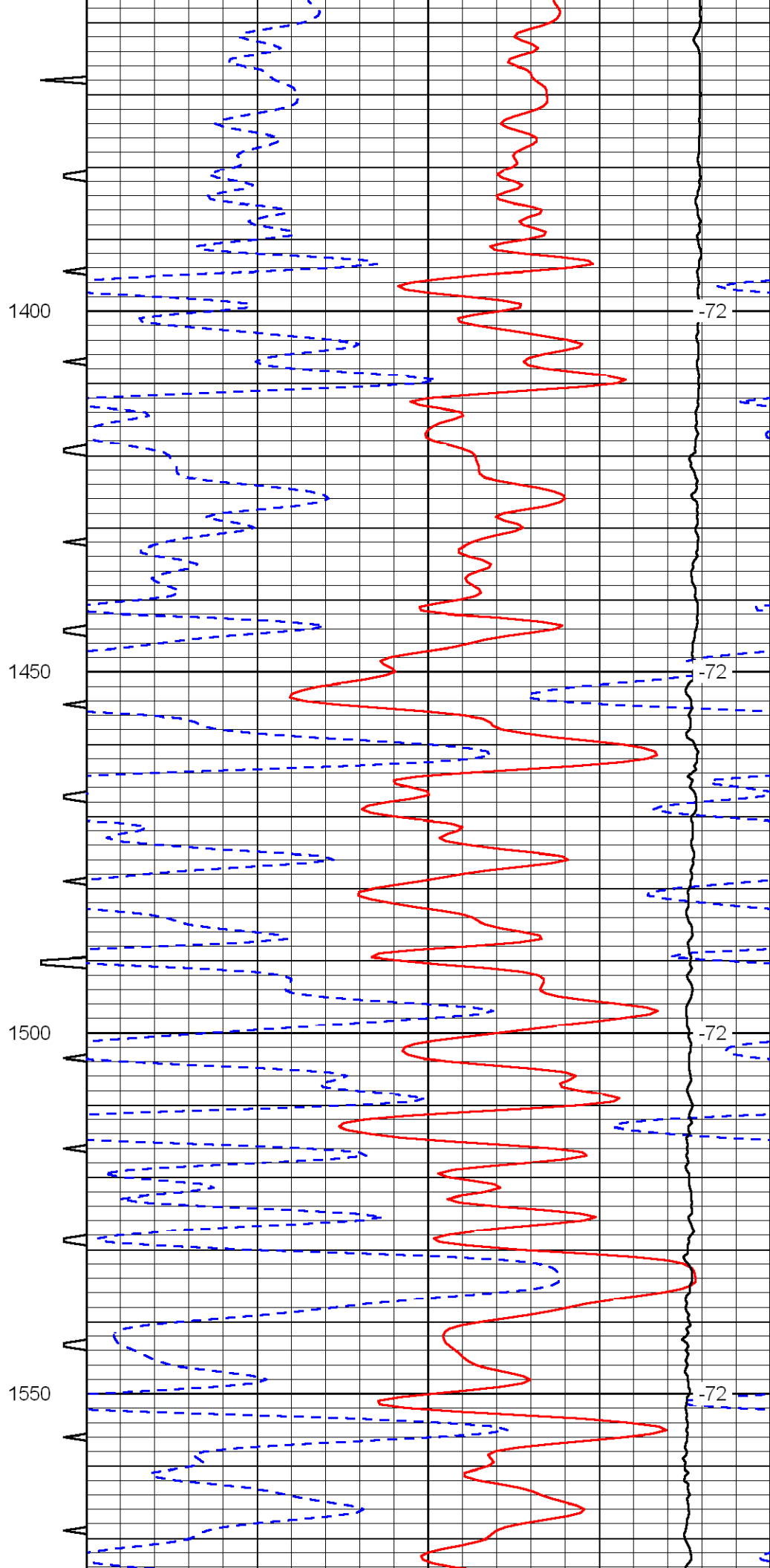
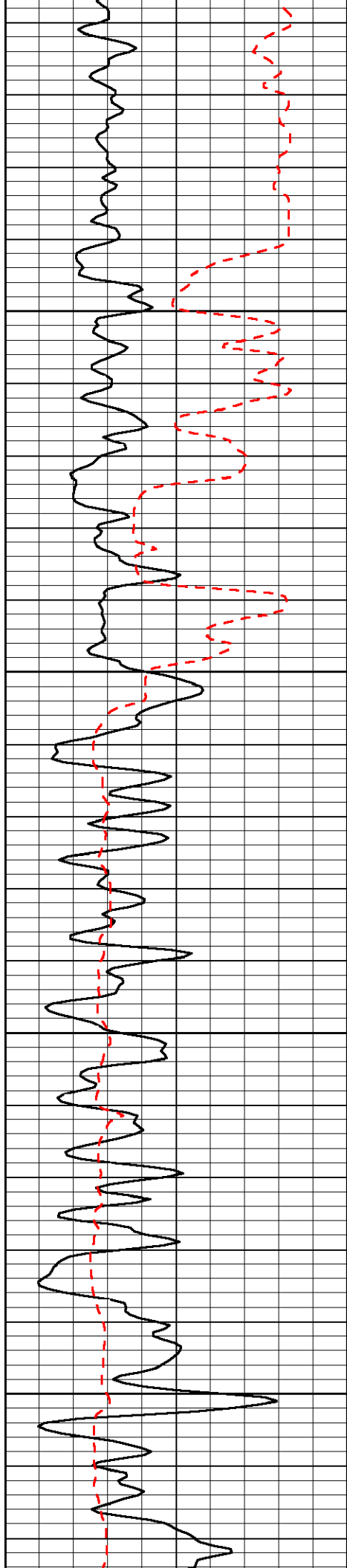


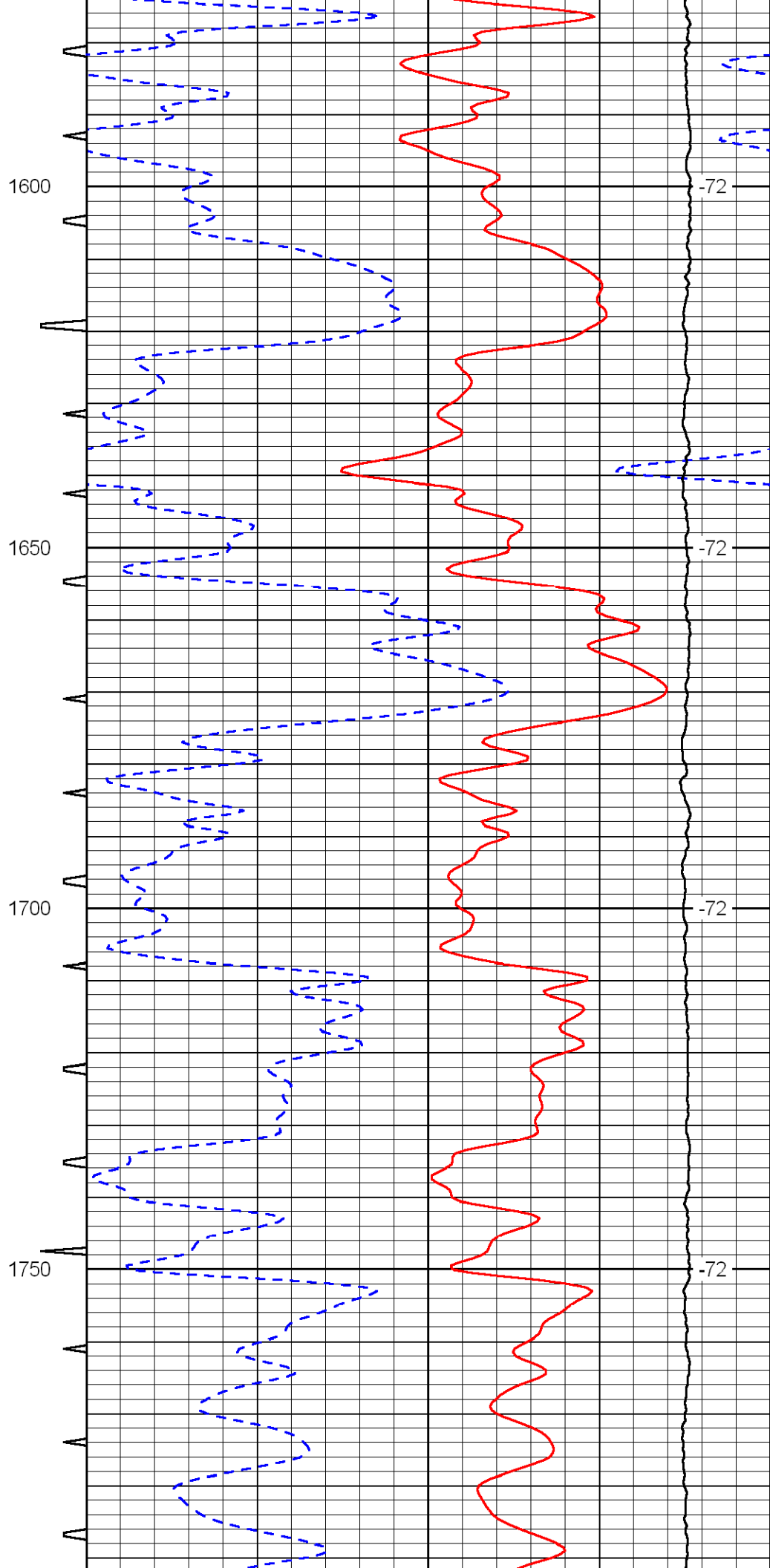
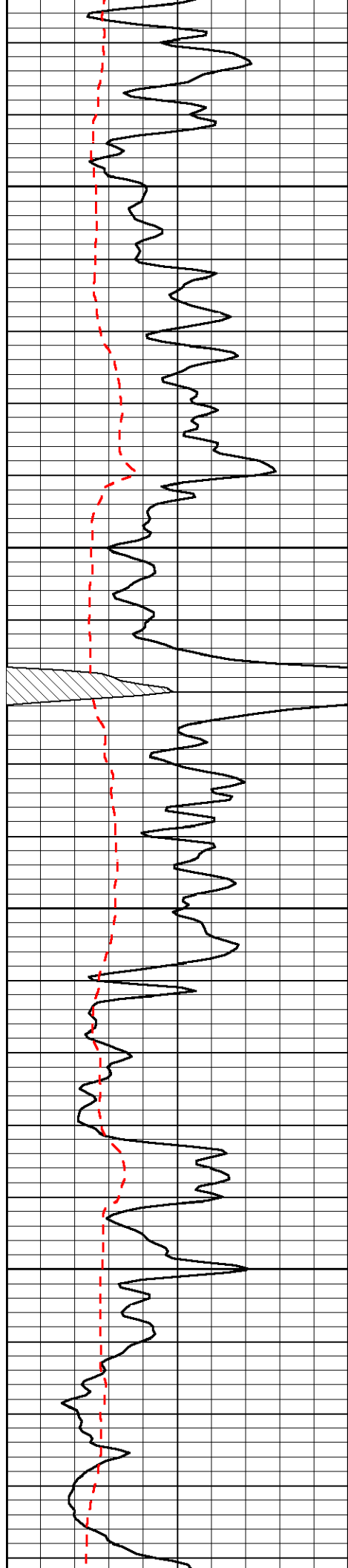


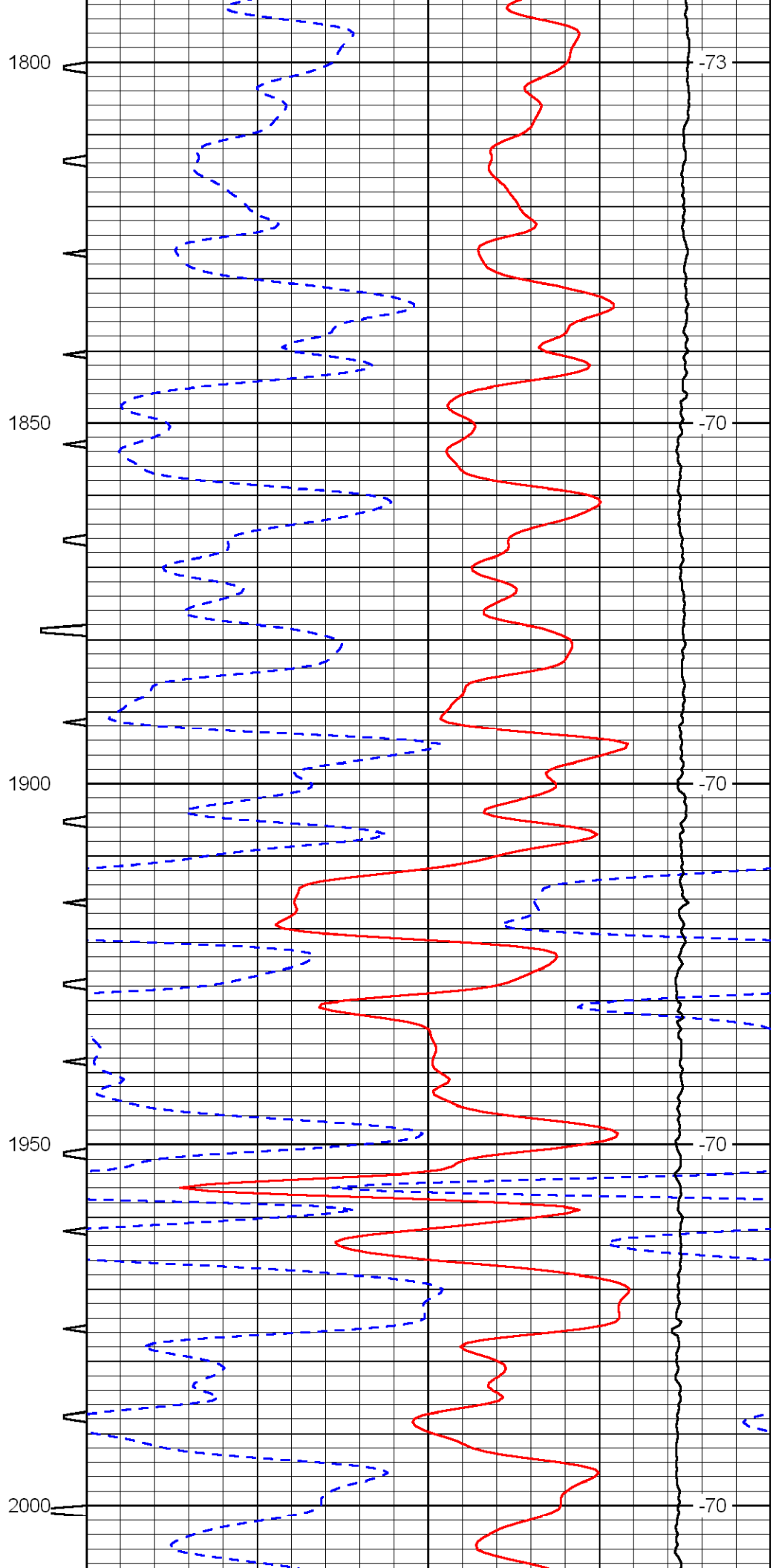
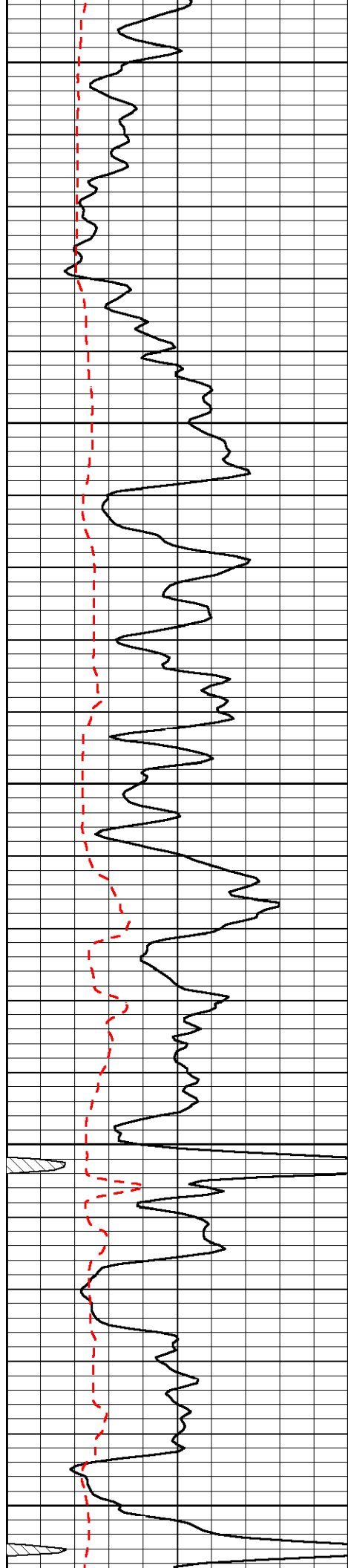


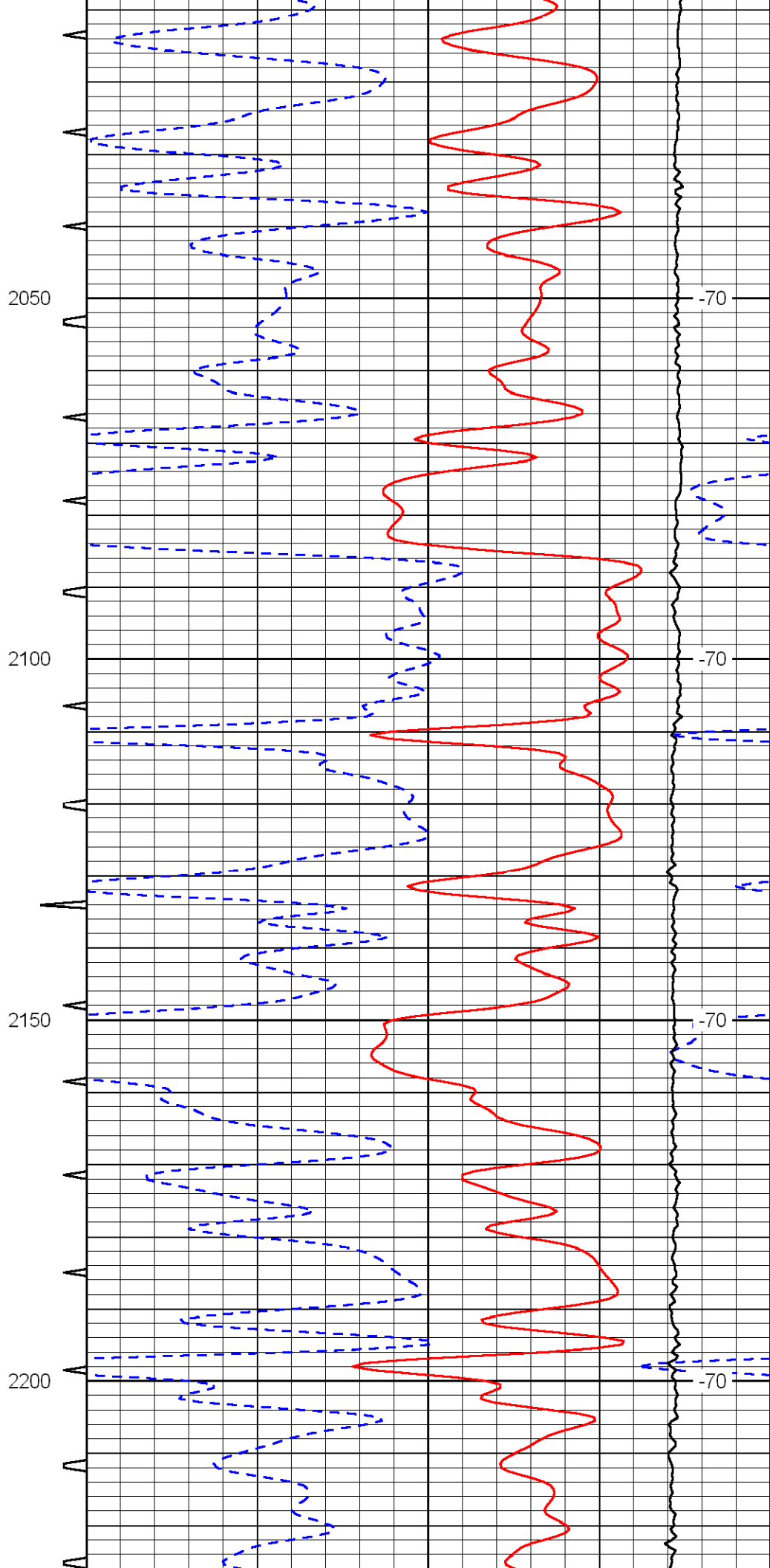
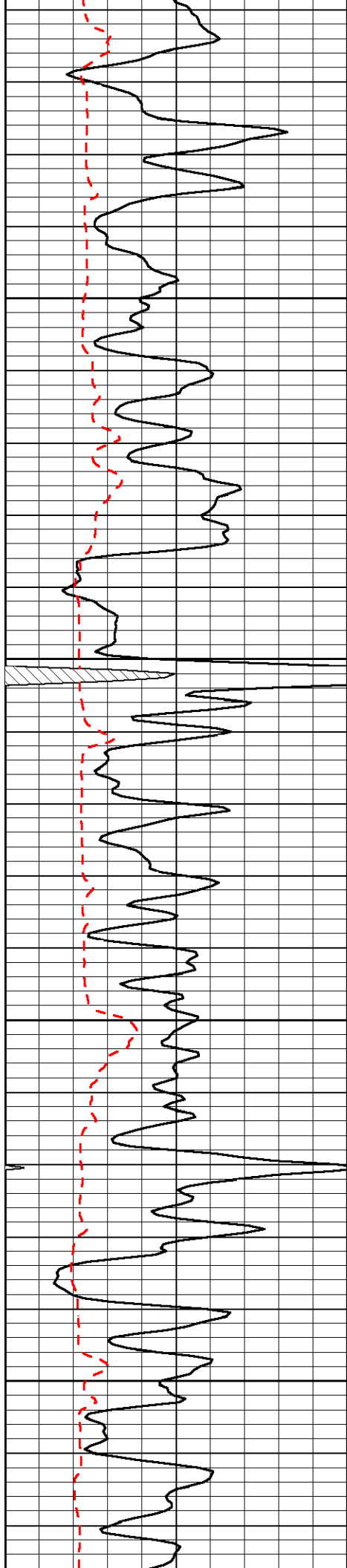


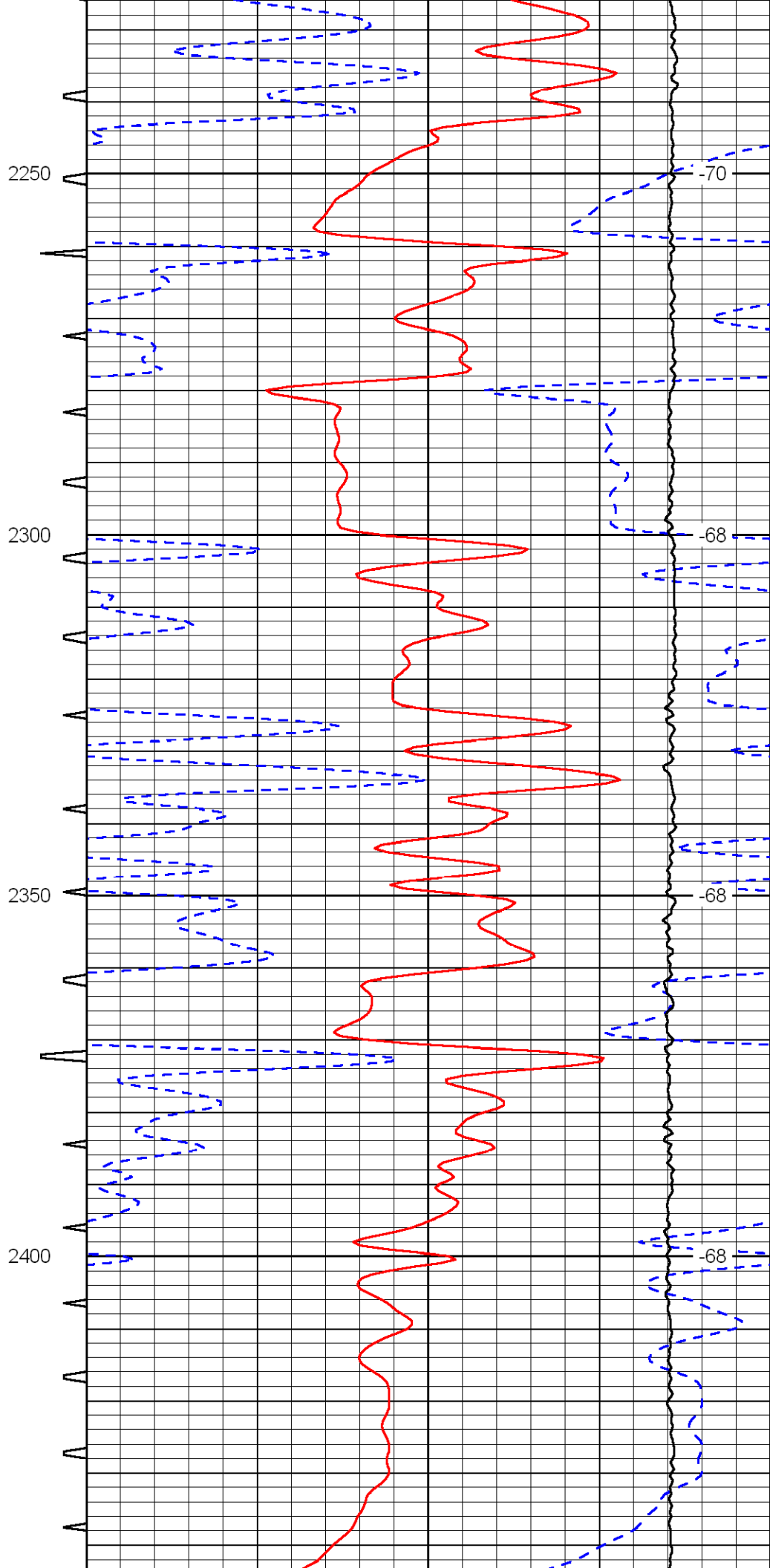
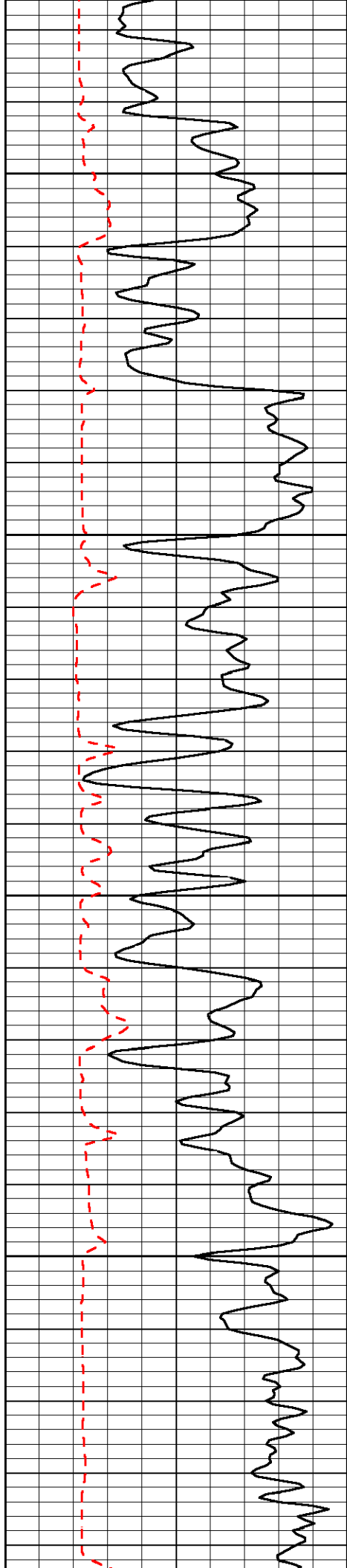


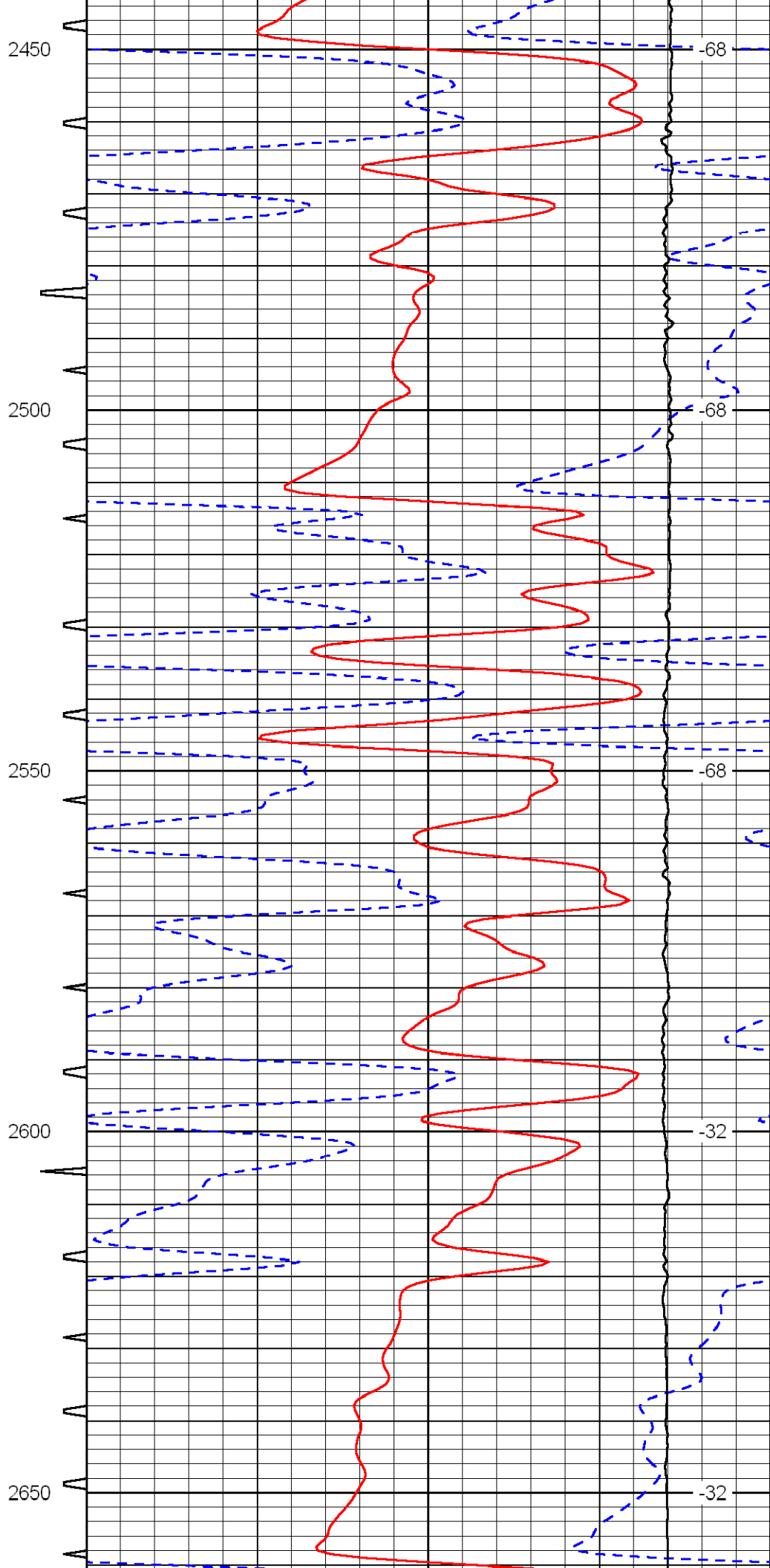
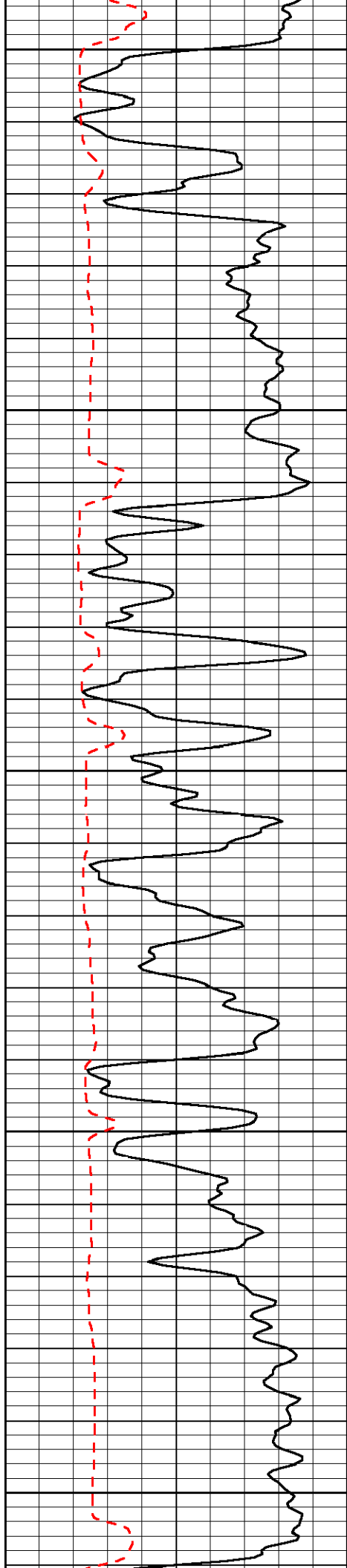


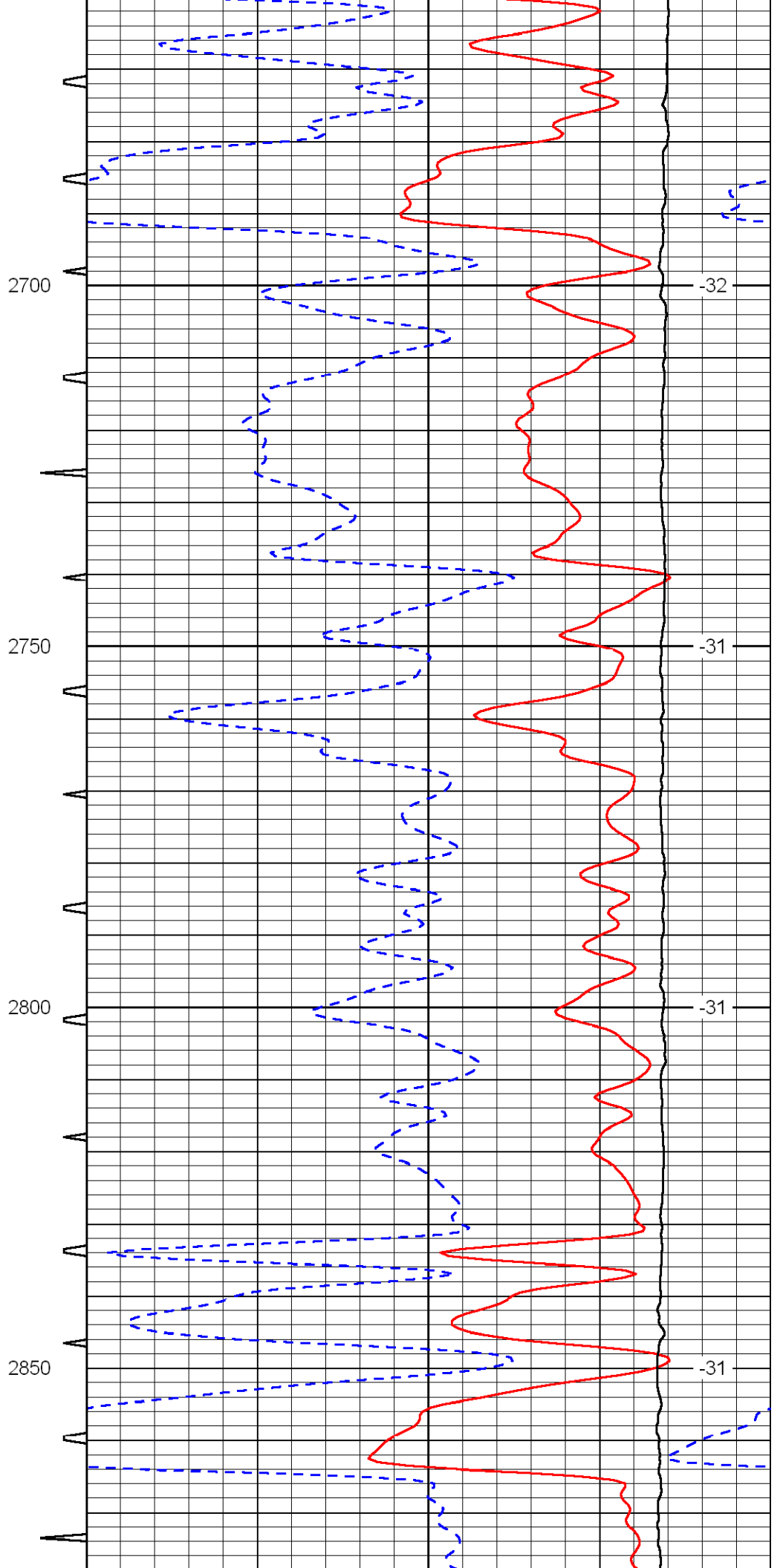
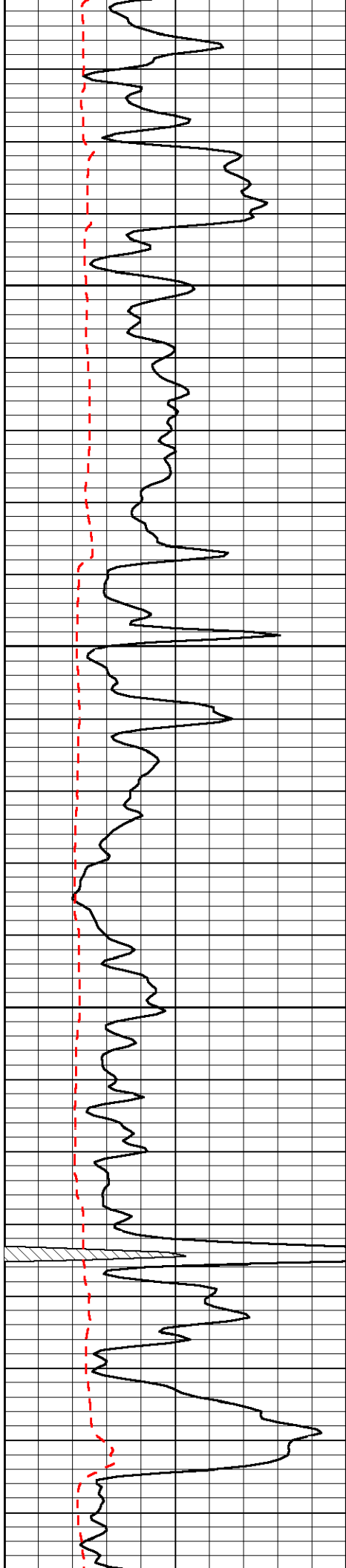


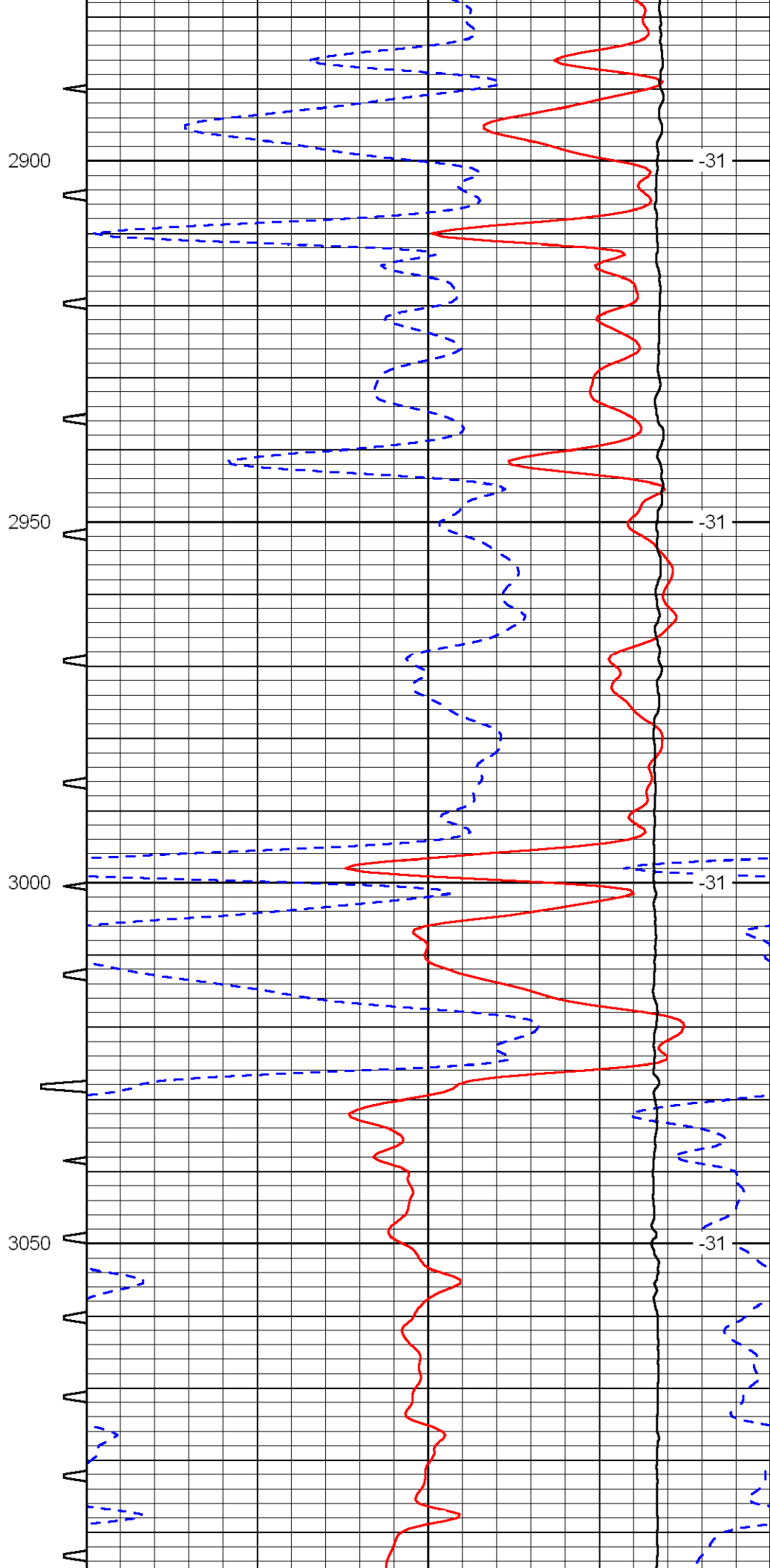
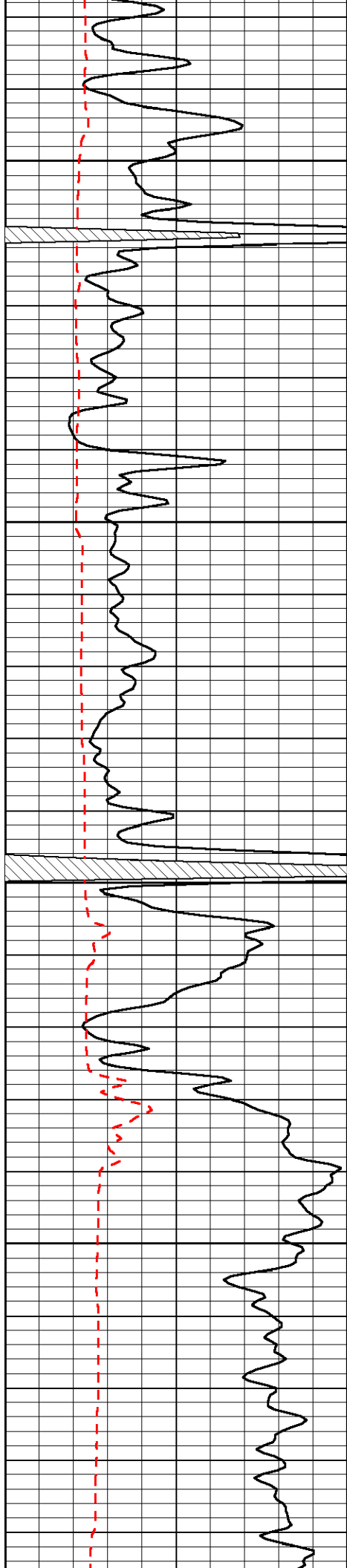


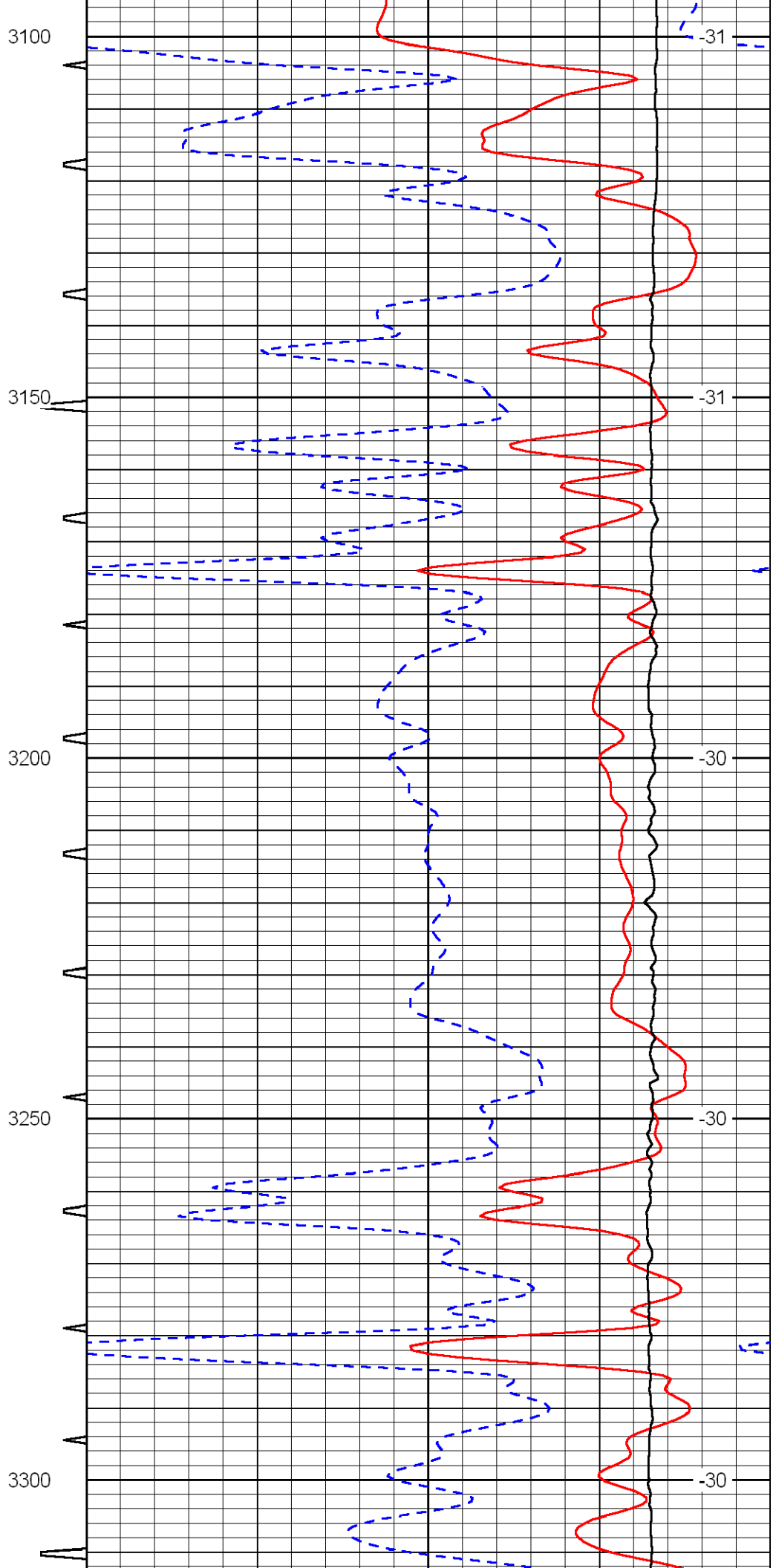
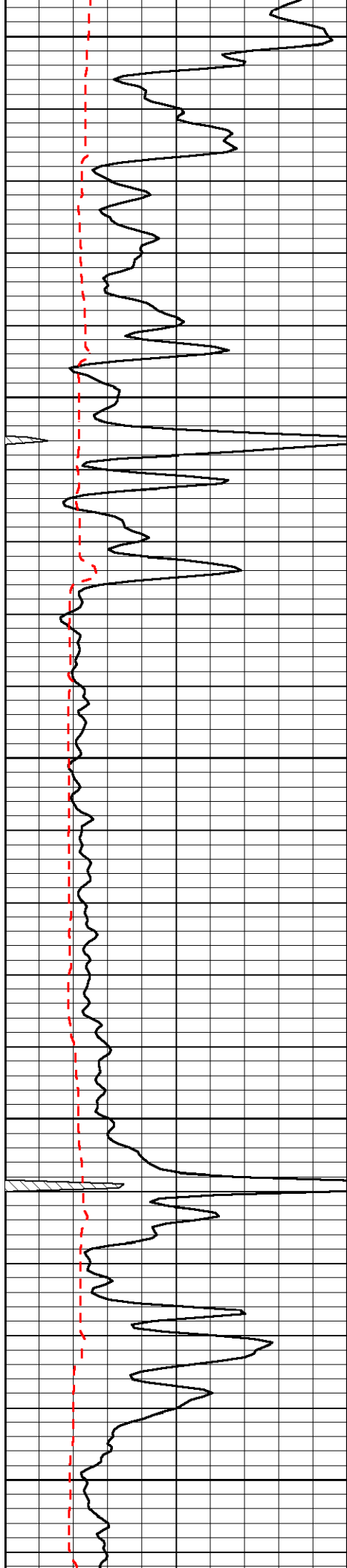


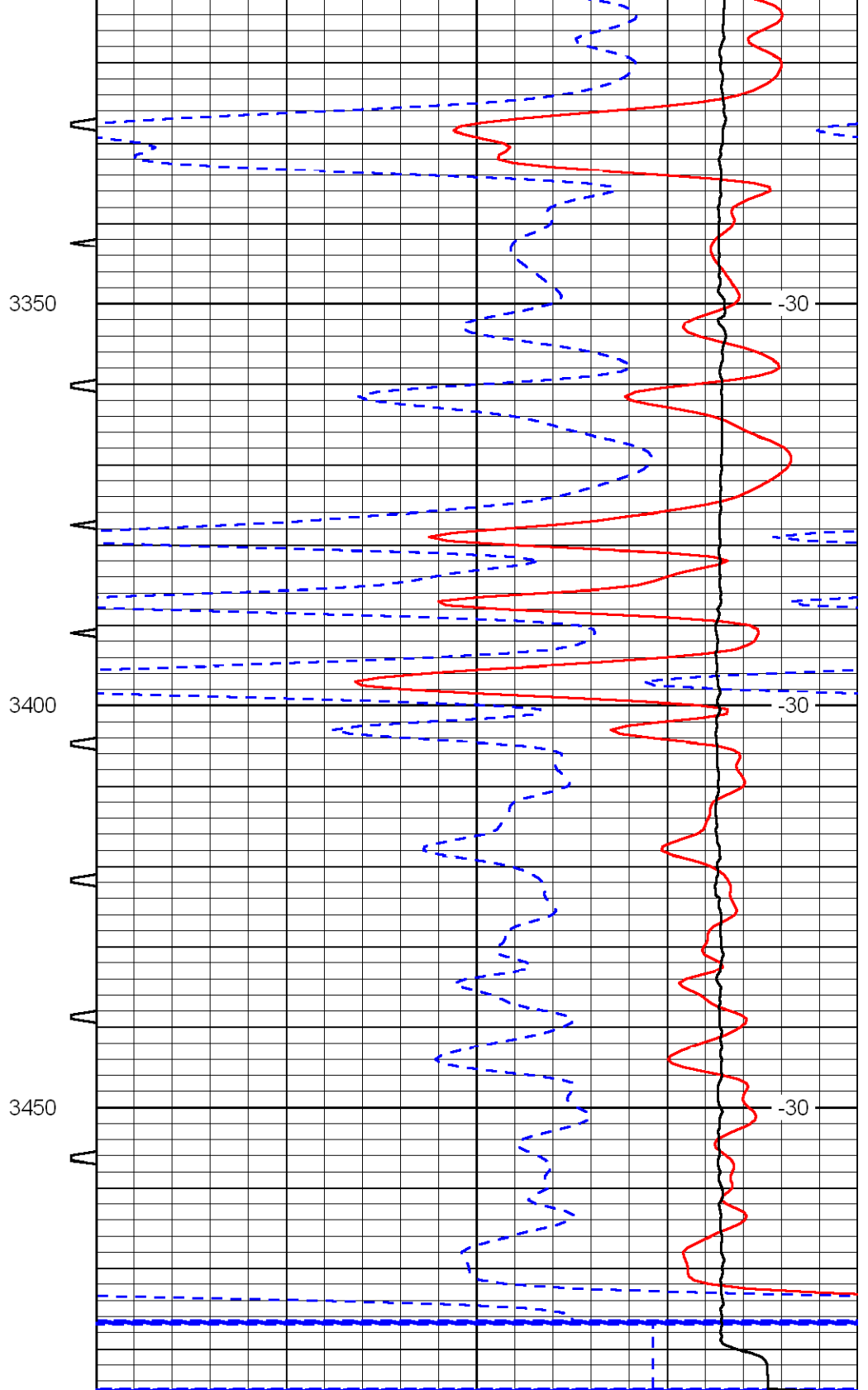
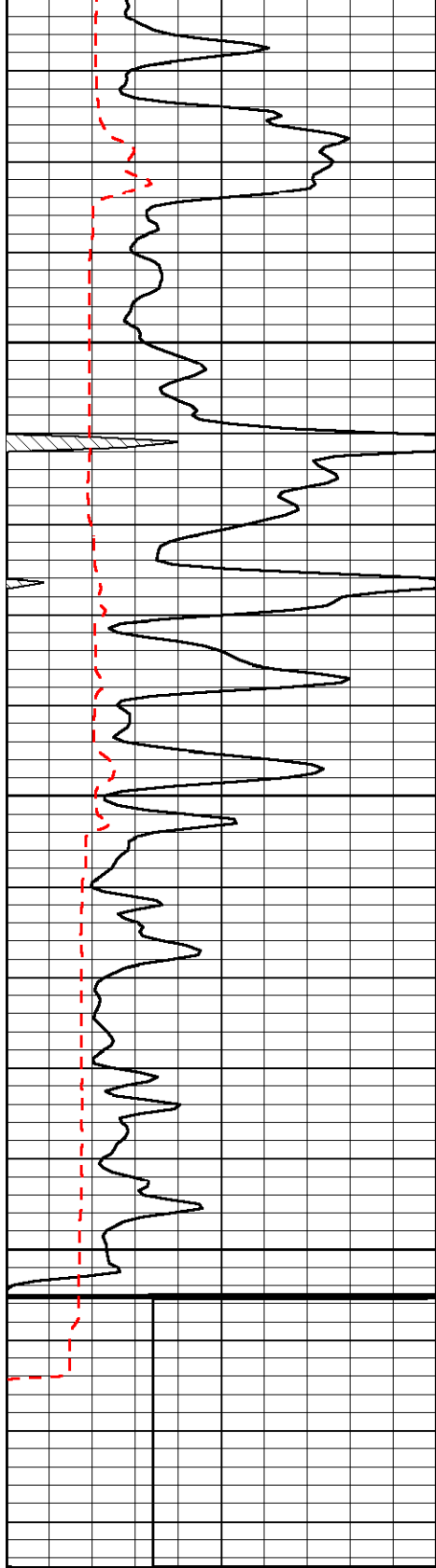












0	Gamma Ray	150	Sonic Int	140	Delta Time (usec/ft) (usec/ft)	40
150	Gamma Ray	300	5 (msec)	30	SPOR (pu)	-10
6	Caliper (in)	16		10000	LTEN (lb) (lb)	0
						LSPD (ft/min)