



# Microresistivity Log

DIGITAL LOG (785) 625-3858

API No.	15-047-21,591-00-00	
Company	McCoy Petroleum Corporation	
Well	Wilson "C" Unit No. 1-29	
Field	CLW	
County	Edwards	State Kansas
Location	1220' FSL & 2970' FEL	
Sec: 29	Twp: 25S	Rge: 18W
Other Services	CNL/CDL DIL	

Permanent Datum	Ground Level	Elevation 2179
Log Measured From	Kelly Bushing	13 Ft. Above Perm. Datum
Drilling Measured From	Kelly Bushing	
Date	04/20/2010	
Run Number	Two	
Depth Driller	4657	
Depth Logger	4658	
Bottom Logged Interval	4657	
Top Log Interval	2350	
Casing Driller	8.625 @ 282	
Casing Logger	273	
Bit Size	7.875	
Type Fluid in Hole	Chemical	
Salinity, ppm CL	5.400	
Density / Viscosity	9.15	50
pH / Fluid Loss	9.5	7.6
Source of Sample	Flowline	
Rm @ Meas. Temp	.38	@ 76
Rmf @ Meas. Temp	.29	@ 76
Rmc @ Meas. Temp	.51	@ 76
Source of Rmf / Rmc	Charts	
Rm @ BHT	.23	@ 124
Operating Rig Time	4 Hours	
Max Rec. Temp. F	124	
Equipment Number	15	
Location	Hays	
Recorded By	Mike Garrison	
Witnessed By	Robert Hendrix	

<<< Fold Here >>>

All interpretations are opinions based on inferences from electrical or other measurements and we cannot and do not guarantee the accuracy or correctness of any interpretation, and we shall not, except in the case of gross or willful negligence on our part, be liable or responsible for any loss, costs, damages, or expenses incurred or sustained by anyone resulting from any interpretation made by any of our officers, agents or employees. These interpretations are also subject to our general terms and conditions set out in our current Price Schedule.

### Comments

Thank you for using Log-Tech, Inc.  
 (785) 625-3858

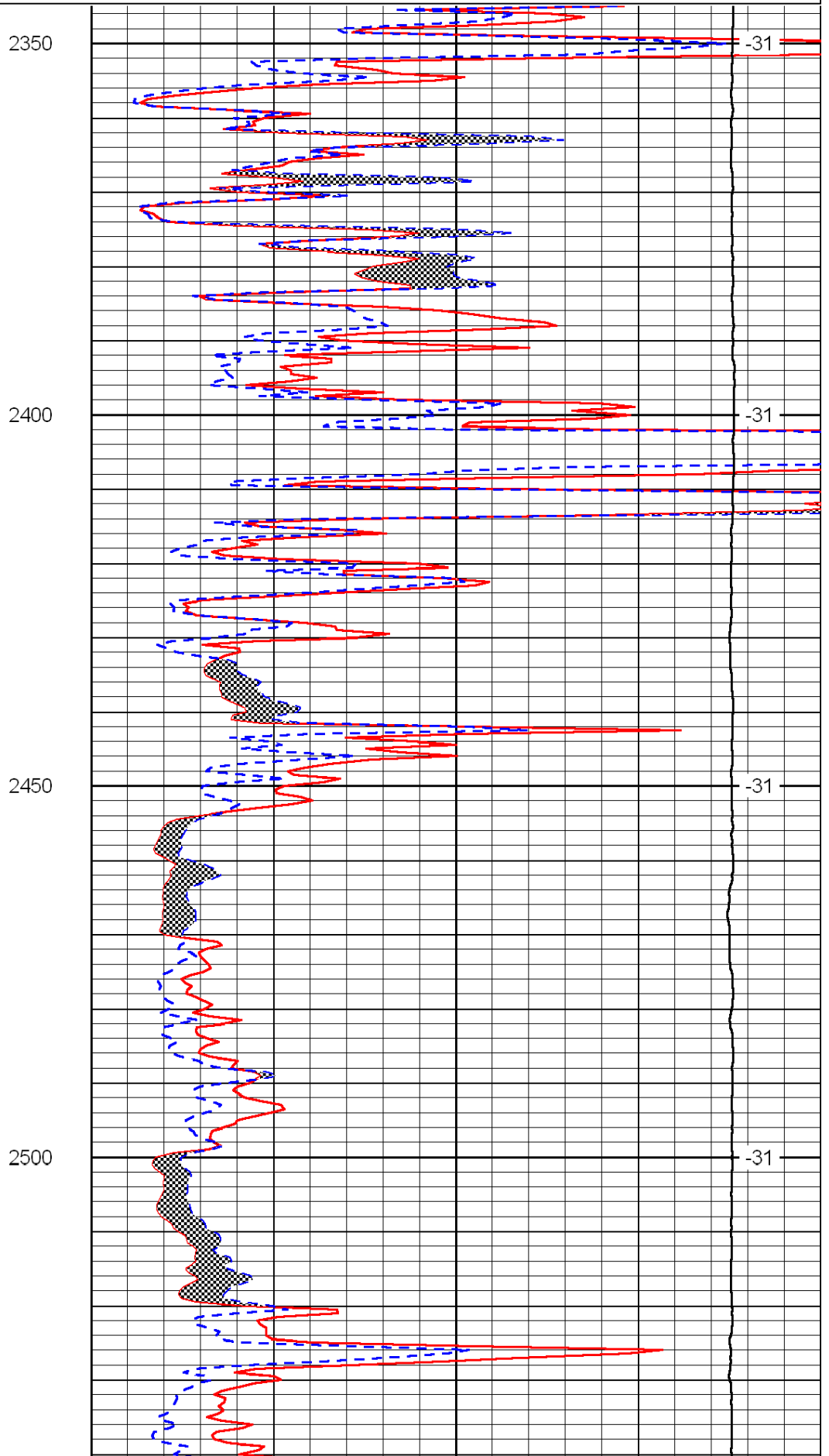
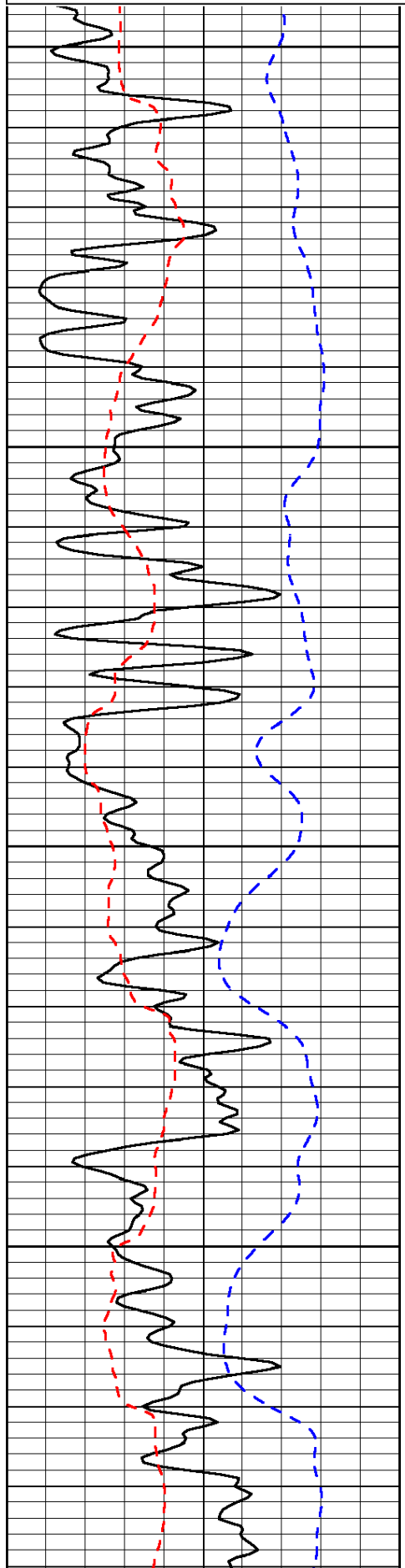
Kinsley, 4 South, 3 East, 1 1/2 South, East Into

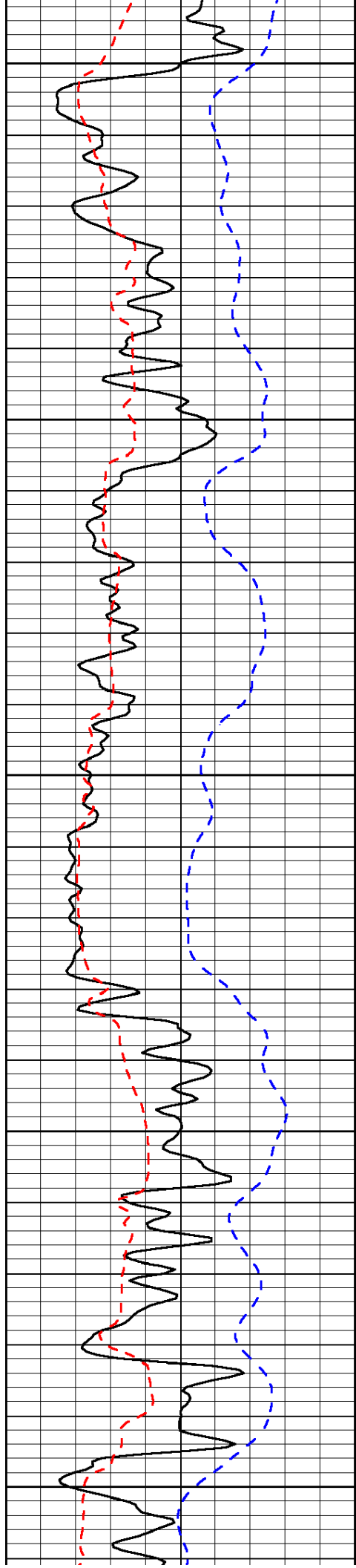
Database File: c:\warrior\data\mccoy\_wilson c unit no. 1-29\mccoy.db  
 Dataset Pathname: dil/mccoystck  
 Presentation Format: micro  
 Dataset Creation: Tue Apr 20 19:35:12 2010  
 Charted by: Depth in Feet scaled 1:240

0	Gamma Ray	150
6	Micro Log Caliper (GAPI)	16
-200	SP (mV)	0

0	Micro Inverse 1 X 1	40
0	Micro Normal 2"	40
15000	Line Weight	0

LSPD





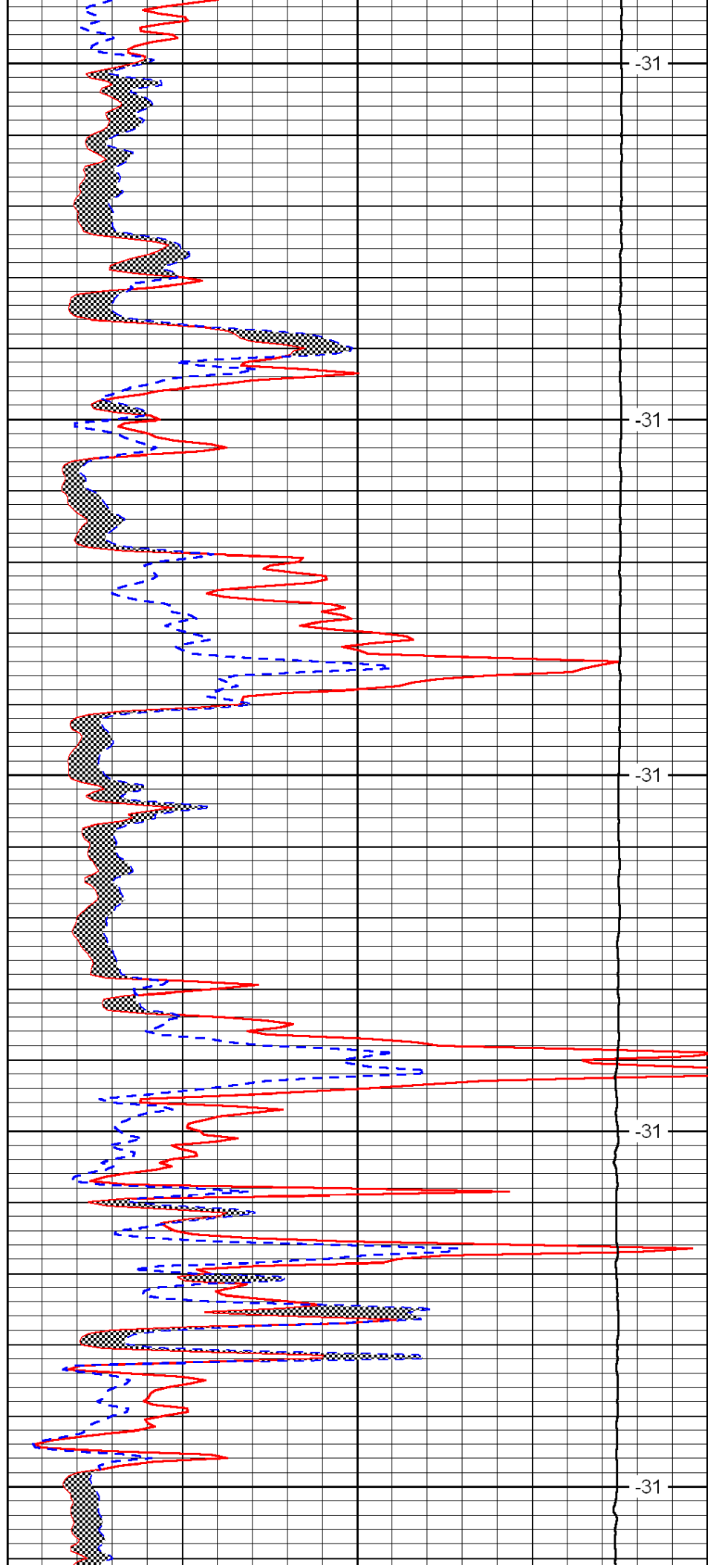
2550

2600

2650

2700

2750



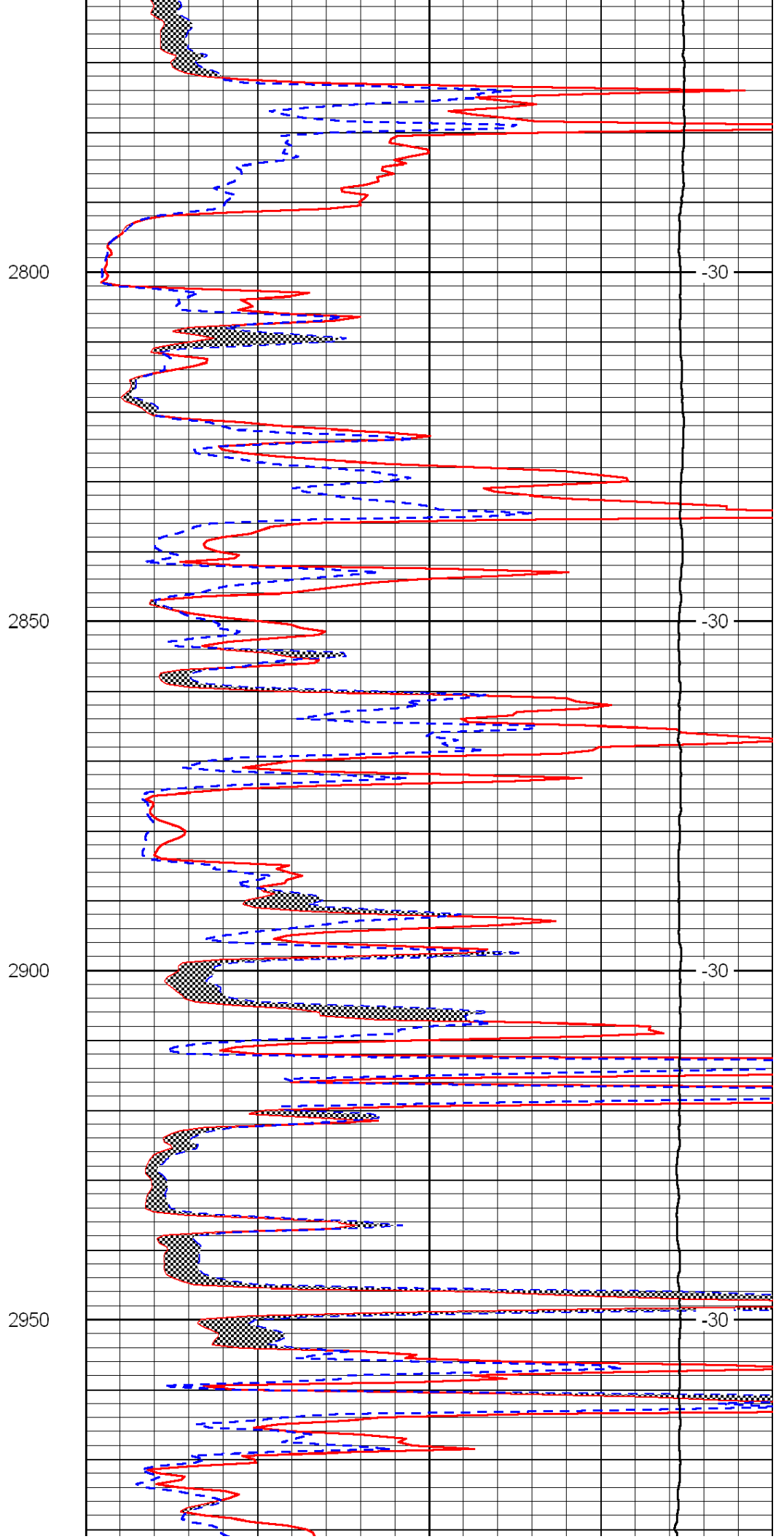
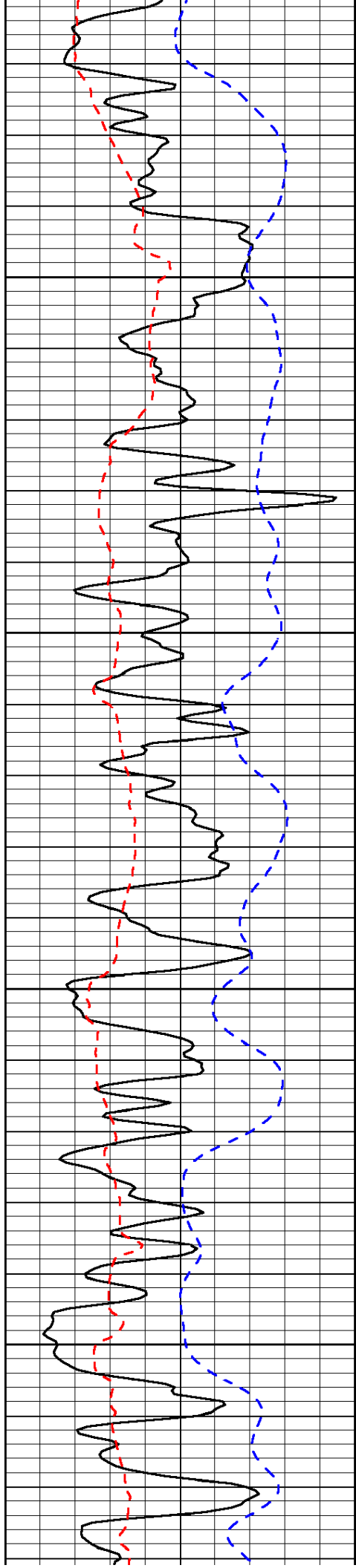
-31

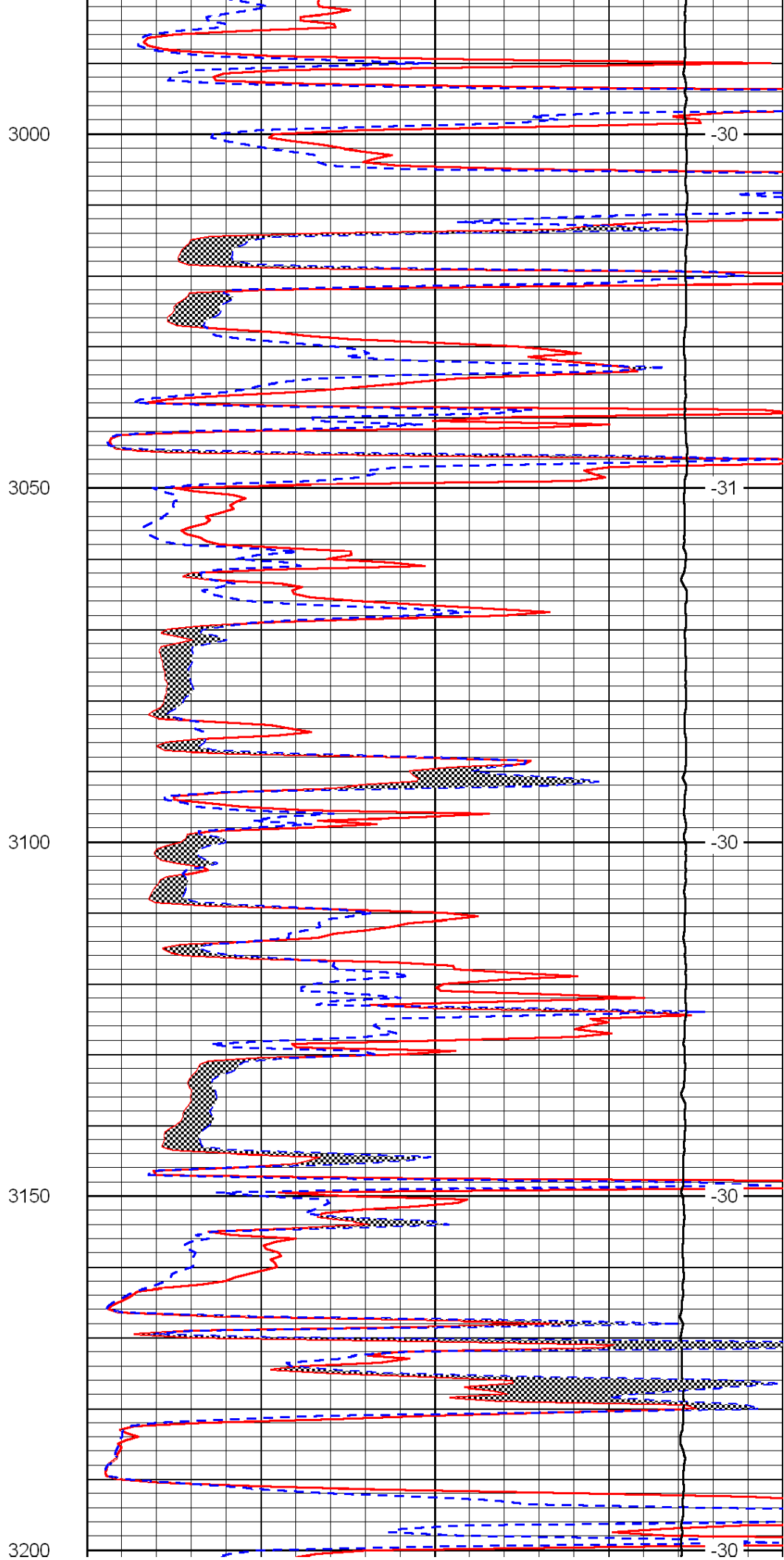
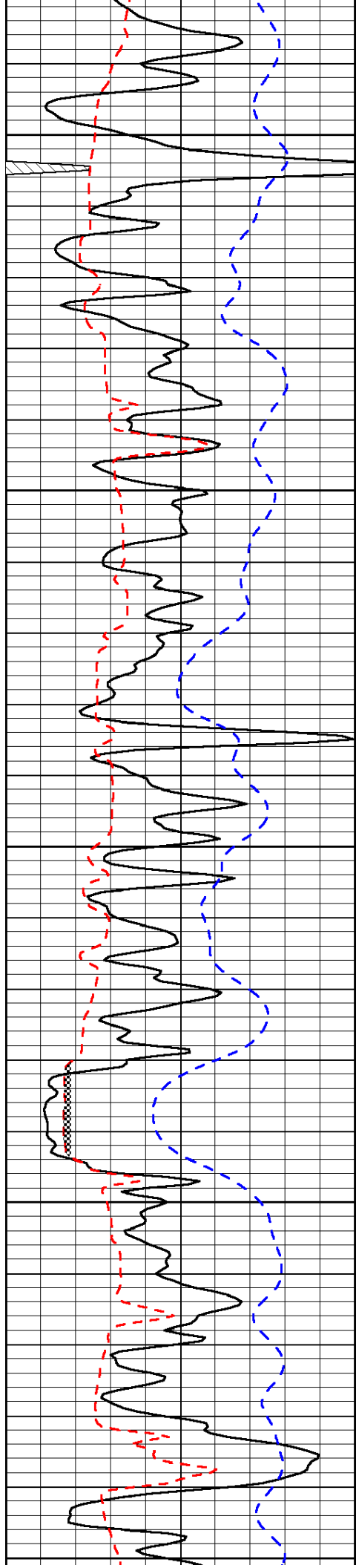
-31

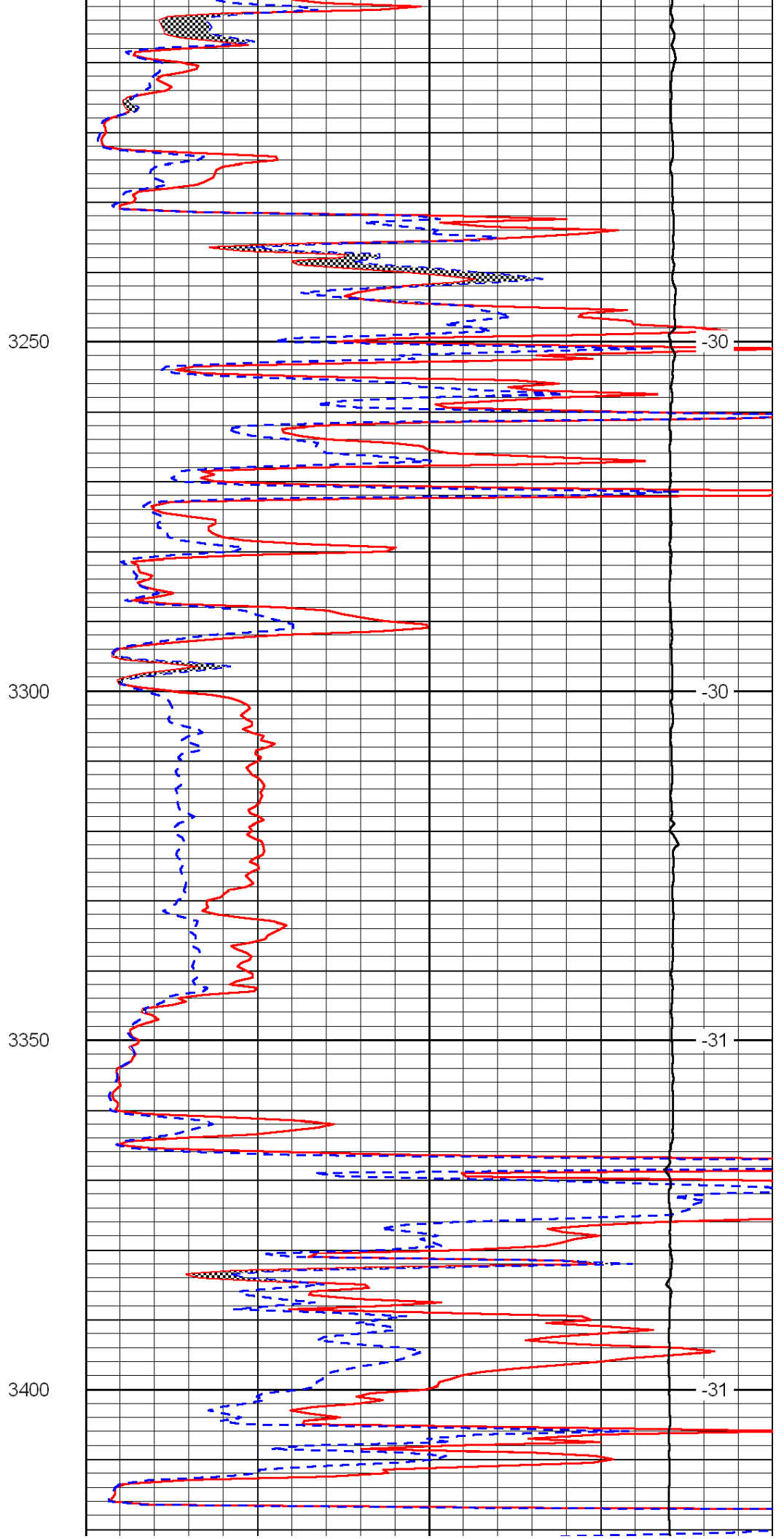
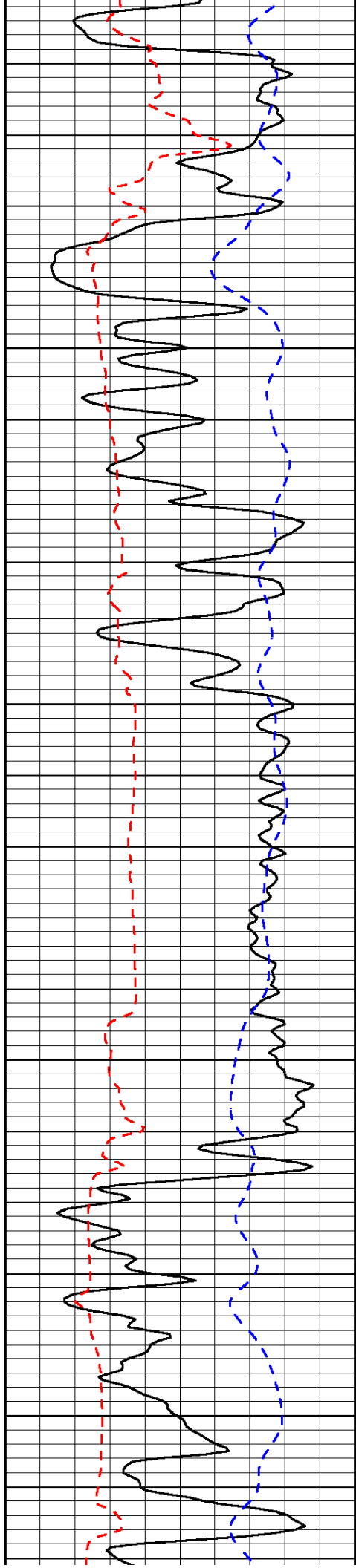
-31

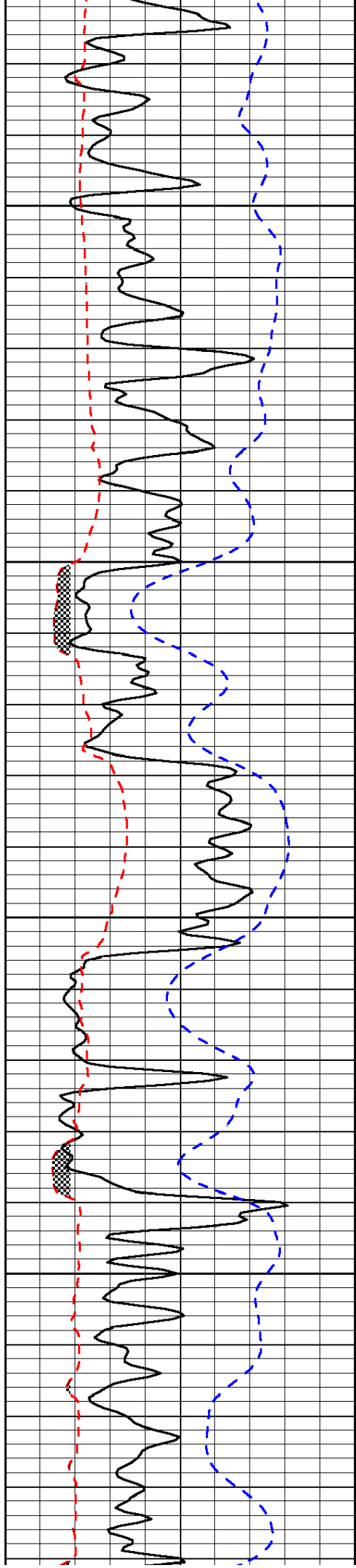
-31

-31







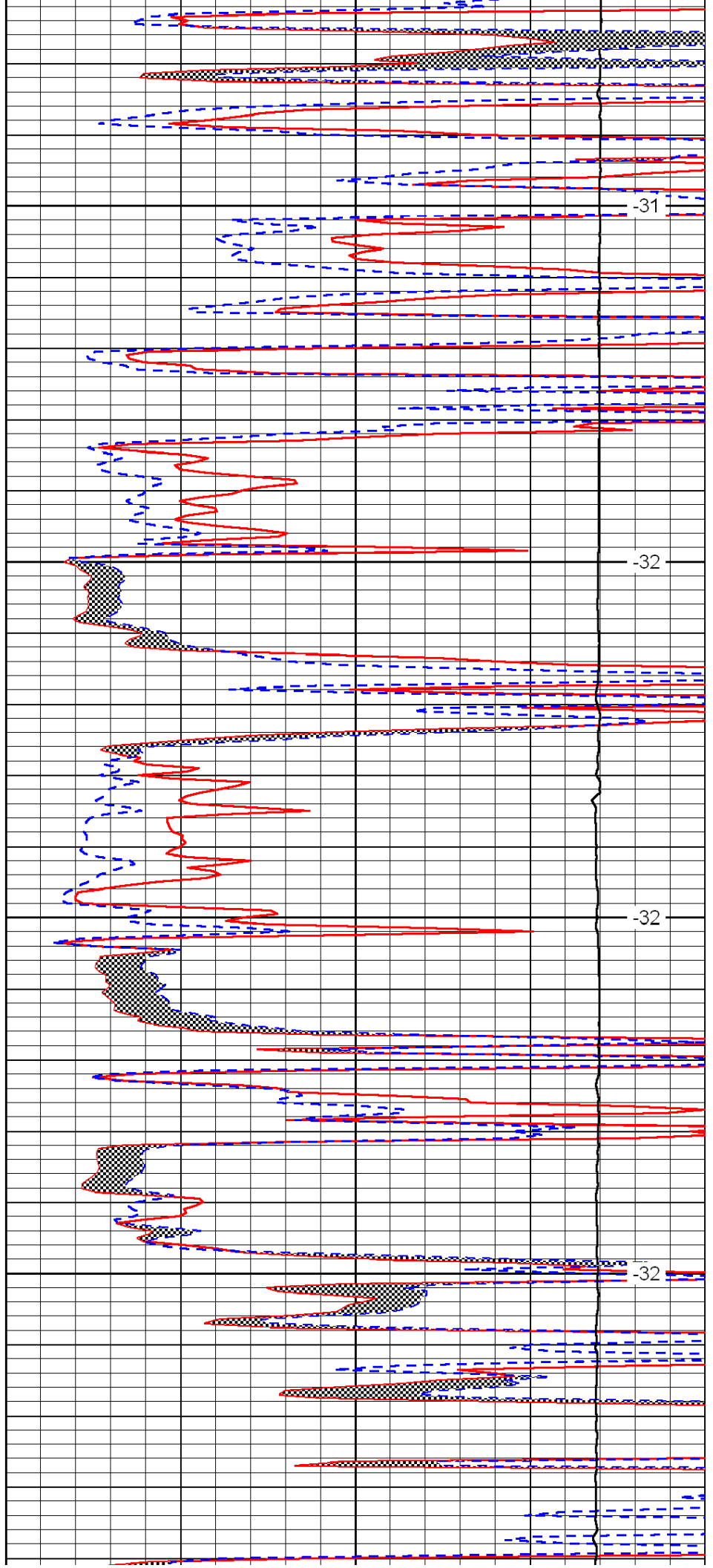


3450

3500

3550

3600

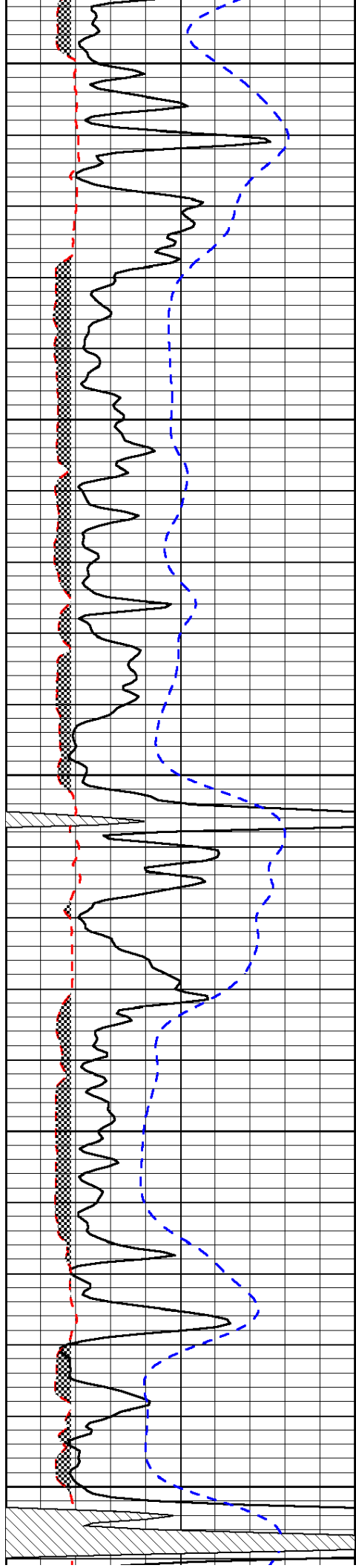


-31

-32

-32

-32



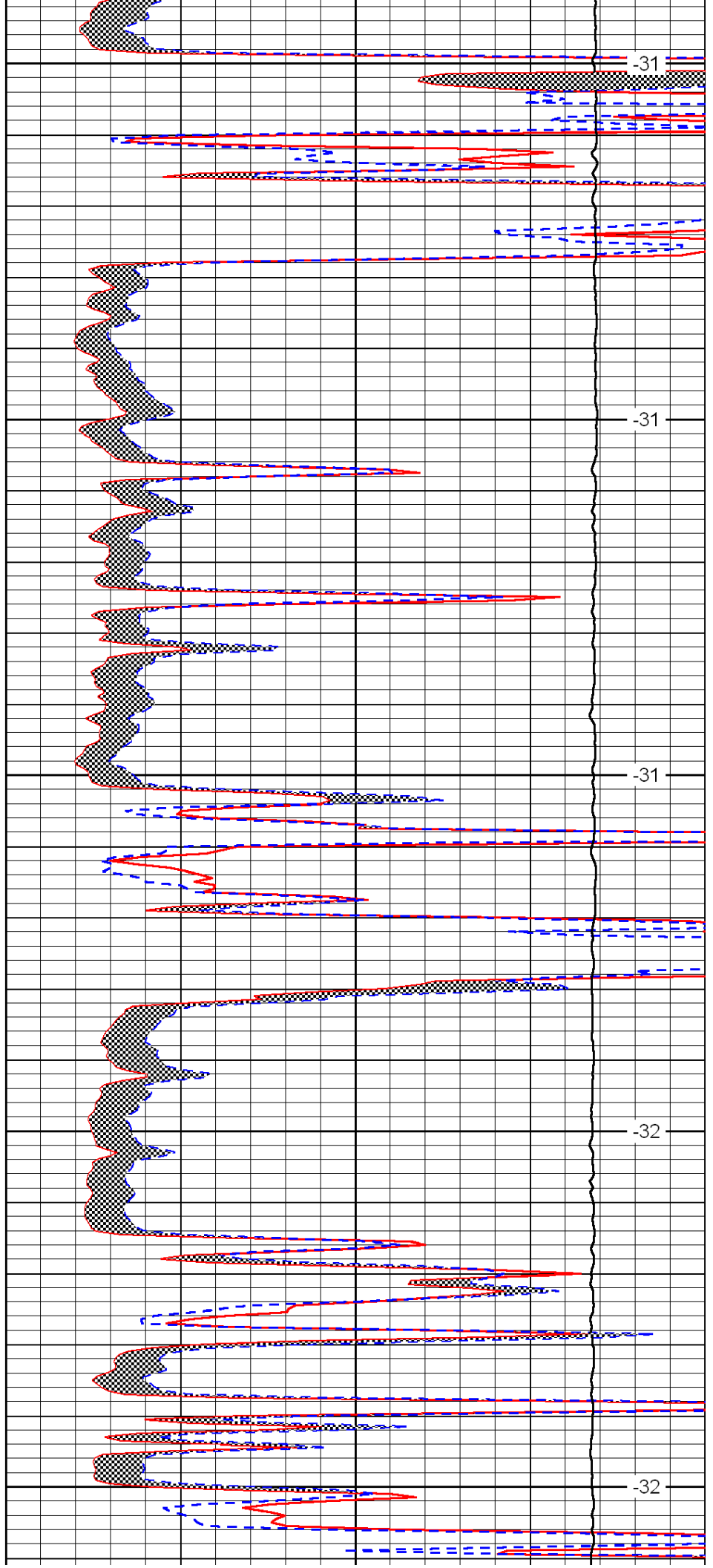
3650

3700

3750

3800

3850



-31

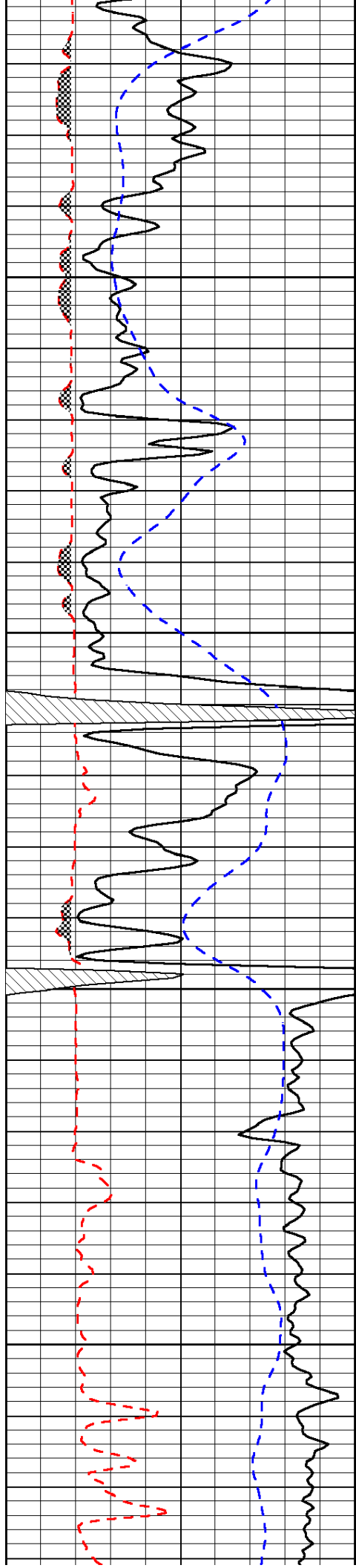
-31

-31

-32

-32



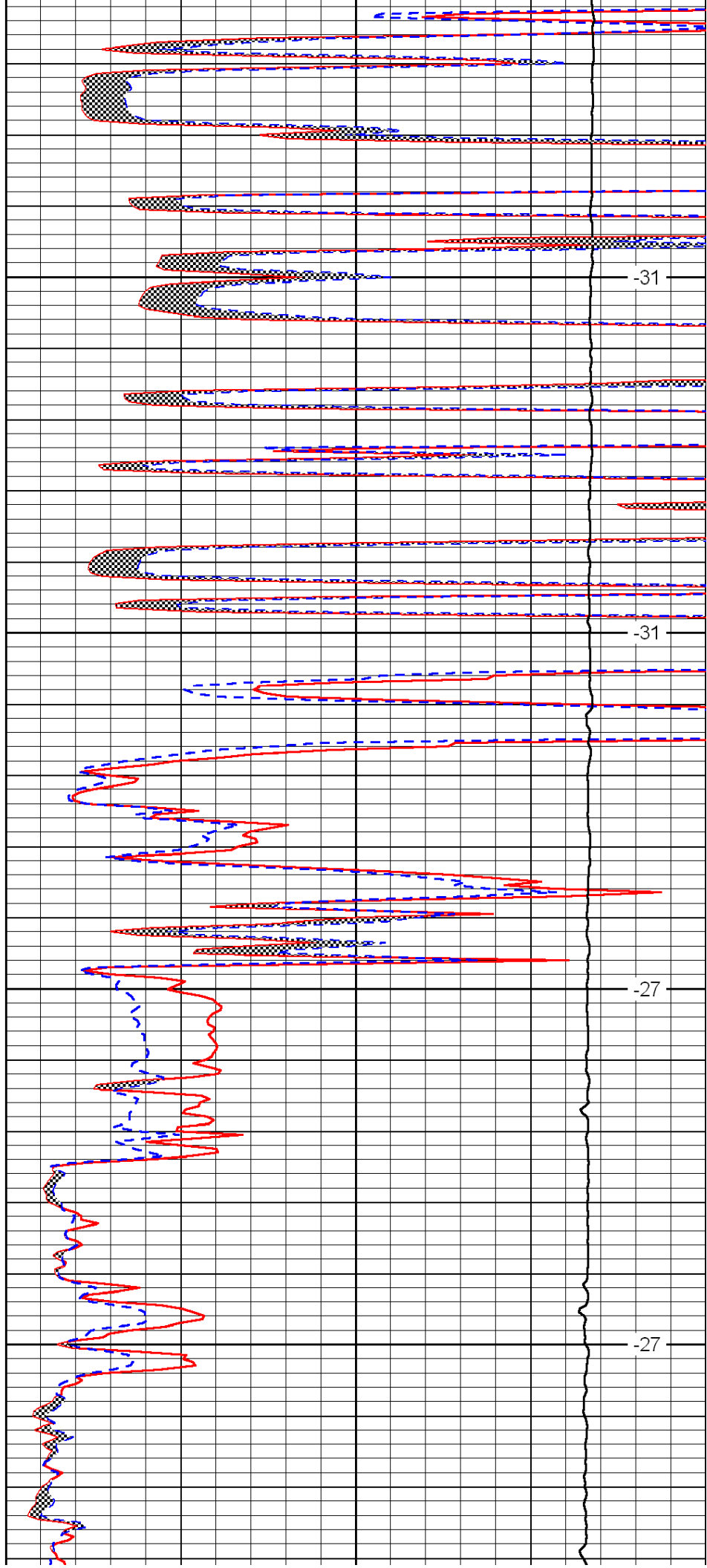


3900

3950

4000

4050

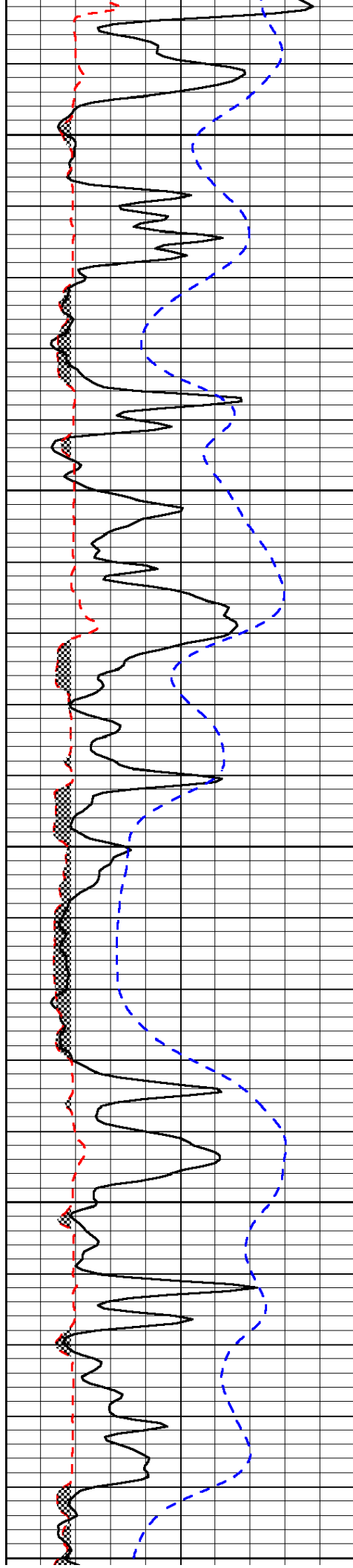


-31

-31

-27

-27



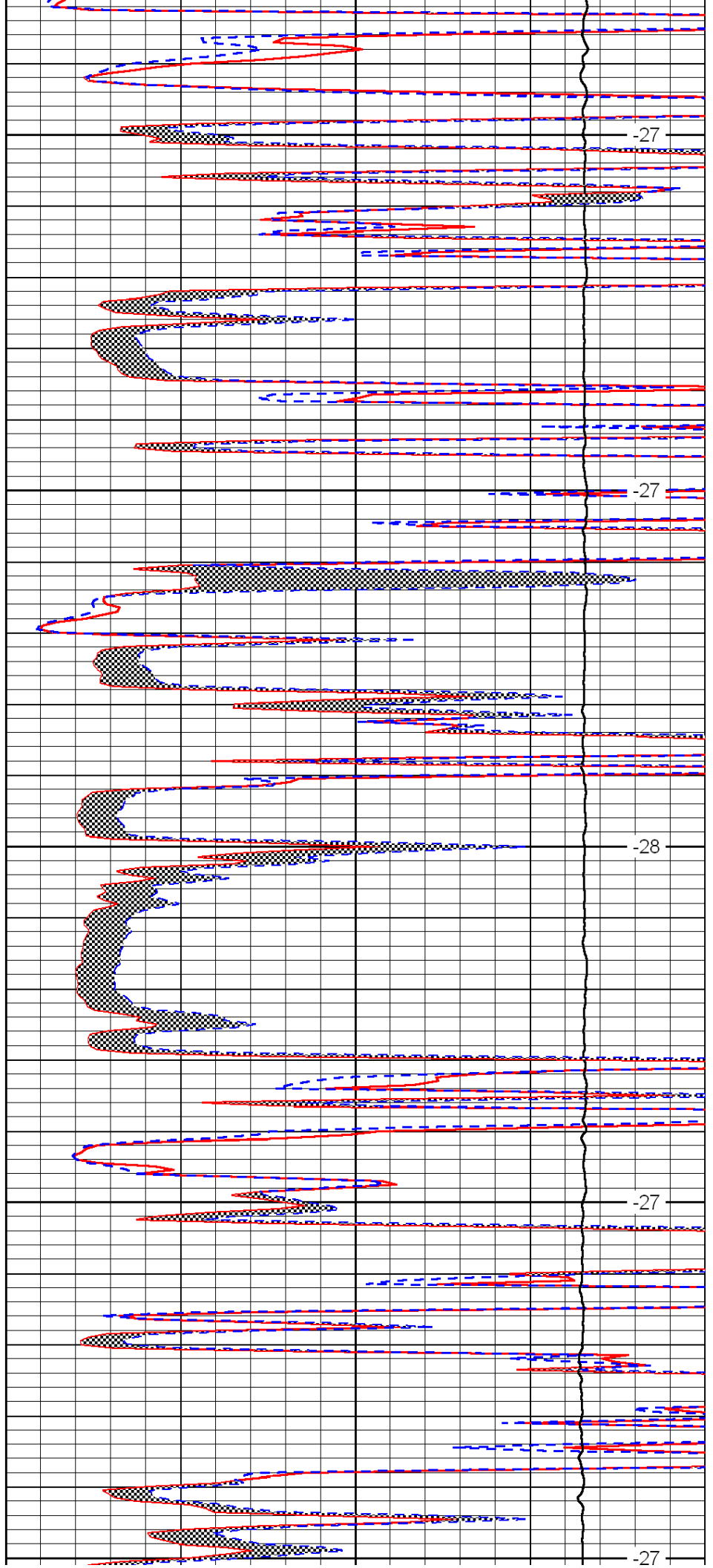
4100

4150

4200

4250

4300



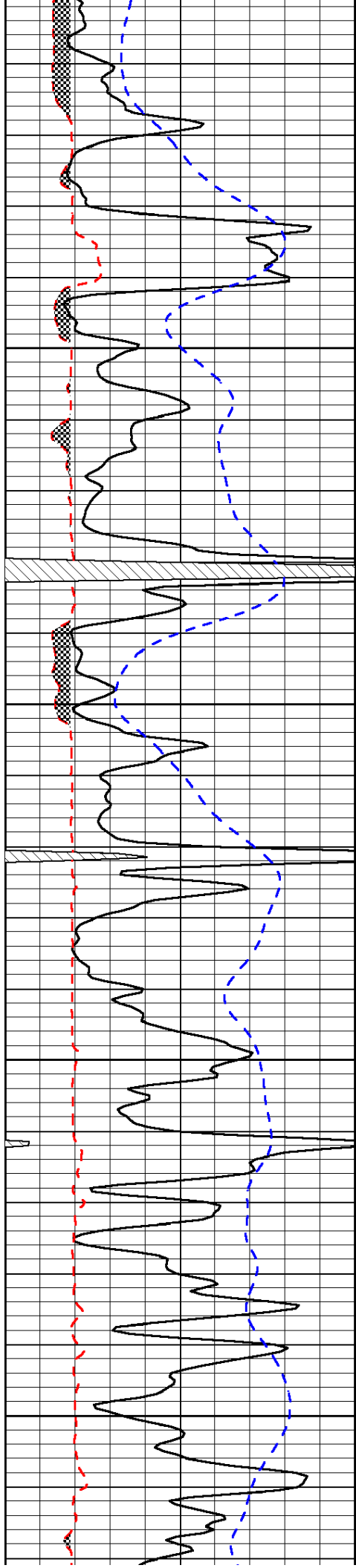
-27

-27

-28

-27

-27

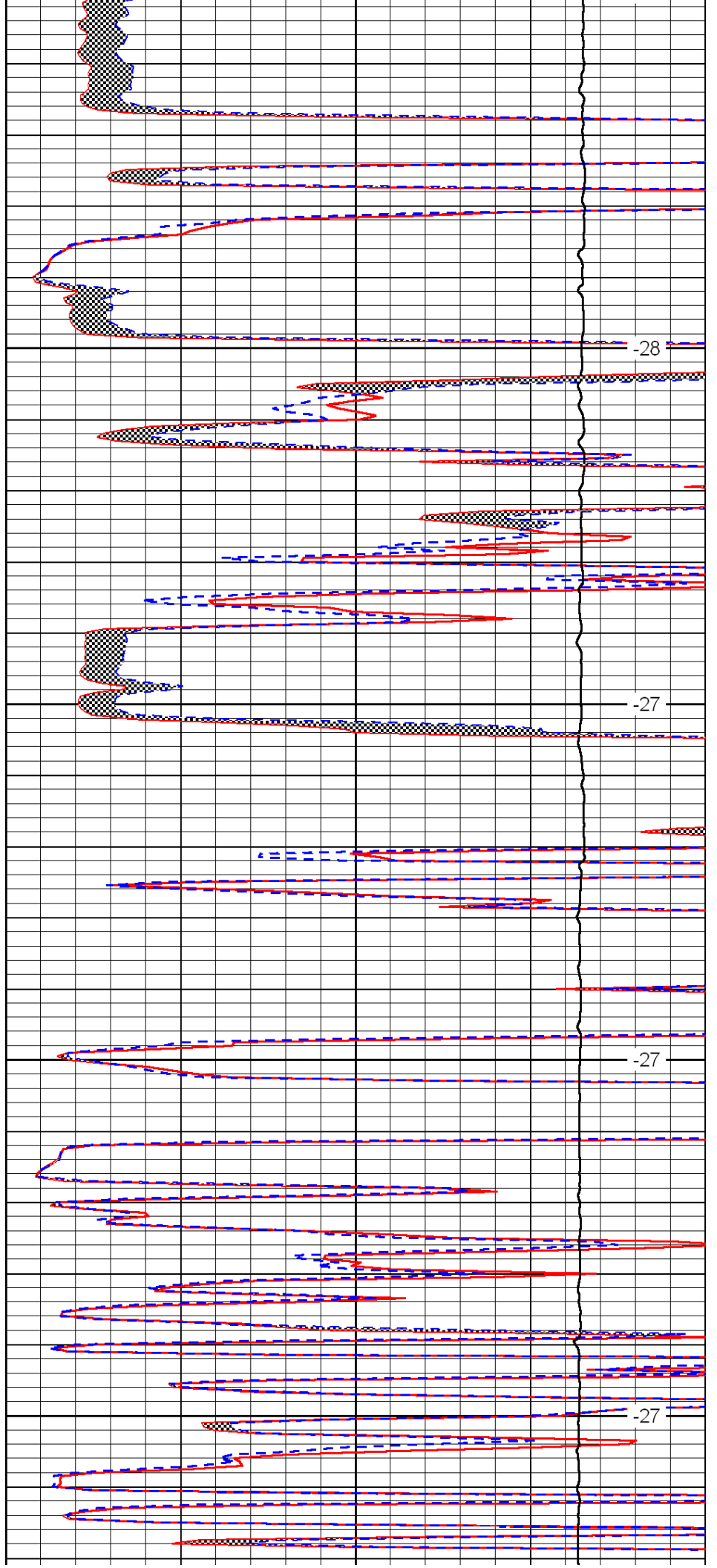


4350

4400

4450

4500

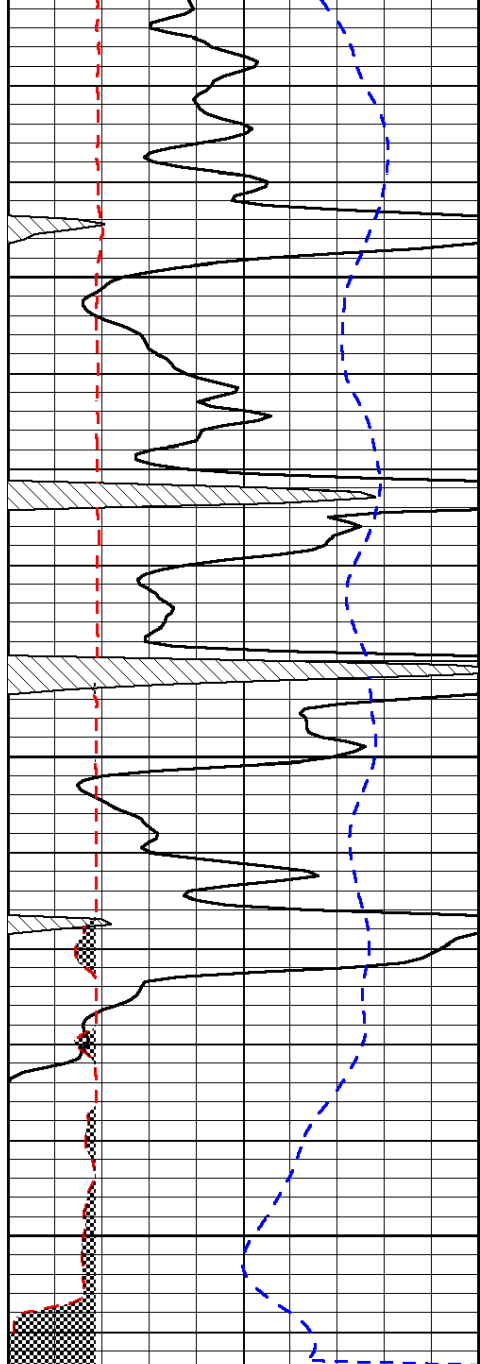


-28

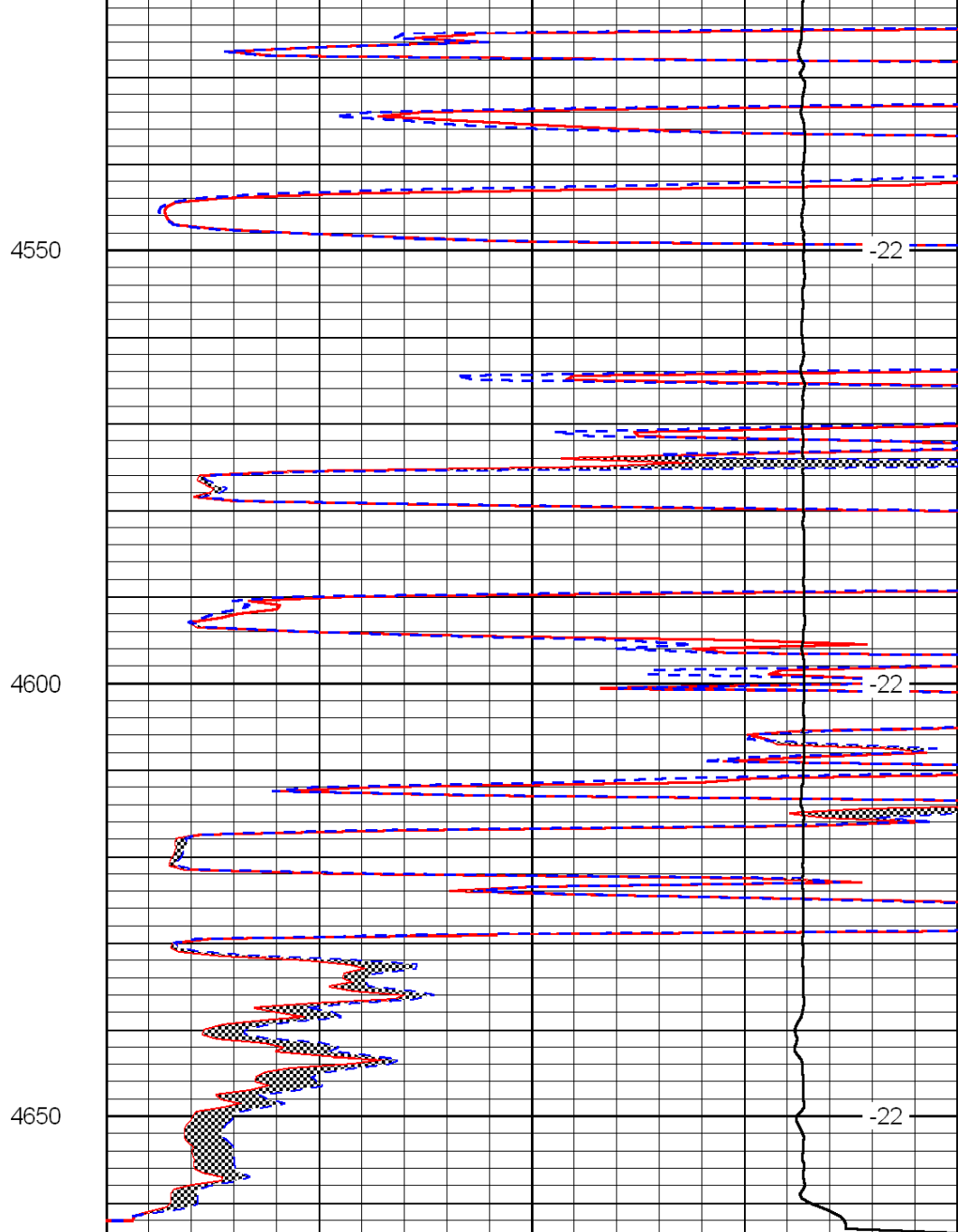
-27

-27

-27



0	Gamma Ray	150
6	Micro Log Caliper (GAPI)	16
-200	SP (mV)	0



0	Micro Inverse 1 X 1	40
0	Micro Normal 2'	40
15000	Line Weight	0

LSPD