



**SUPERIOR  
Hays,  
Kansas**

**MICRO  
LOG**

Company MULL DRILLING COMPANY, INC.  
Well #1-31 CURTIS "D"  
Field WILDCAT  
County GOVE  
State KANSAS

Company MULL DRILLING COMPANY, INC.  
Well #1-31 CURTIS "D"  
Field WILDCAT  
County GOVE State KANSAS

Location: API #: 15-063-21833-0000  
990' FSL & 1101' FWL  
SEC 31 TWP 15S RGE 27W  
Permanent Datum GROUND LEVEL Elevation 2563  
Log Measured From KELLY BUSHING 9' A.G.L.  
Drilling Measured From KELLY BUSHING  
Other Services  
CDL/CNL  
DIL/SONIC  
Elevation  
K.B. 2672  
D.F. 2570  
G.L. 2563

Date	3-27-10
Run Number	TWO
Depth Driller	4570
Depth Logger	4574
Bottom Logged Interval	4556
Top Log Interval	3500
Casing Driller	8 5/8" @ 232
Casing Logger	232
Bit Size	7 7/8
Type Fluid In Hole	CHEMICAL MUD
Density / Viscosity	9.3/62
pH / Fluid Loss	10.0/8.4
Source of Sample	FLOWLINE
Rm @ Meas. Temp	1.3 @ 64F
Rmf @ Meas. Temp	.975 @ 64F
Rmc @ Meas. Temp	1.56 @ 64F
Source of Rmf / Rmc	MEASURED
Rm @ BHT	.687 @ 121F
Time Circulation Stopped	2 HOURS
Time Logger on Bottom	
Maximum Recorded Temperature	121F
Equipment Number	680
Location	HAYS, KANSAS
Recorded By	JASON CAPPELLUCCI
Witnessed By	KEVIN KESSLER

<<< Fold Here >>>

All interpretations are opinions based on inferences from electrical or other measurements and we cannot and do not guarantee the accuracy or correctness of any interpretation, and we shall not, except in the case of gross or willful negligence on our part, be liable or responsible for any loss, costs, damages, or expenses incurred or sustained by anyone resulting from any interpretation made by any of our officers, agents or employees. These interpretations are also subject to our general terms and conditions set out in our current Price Schedule.

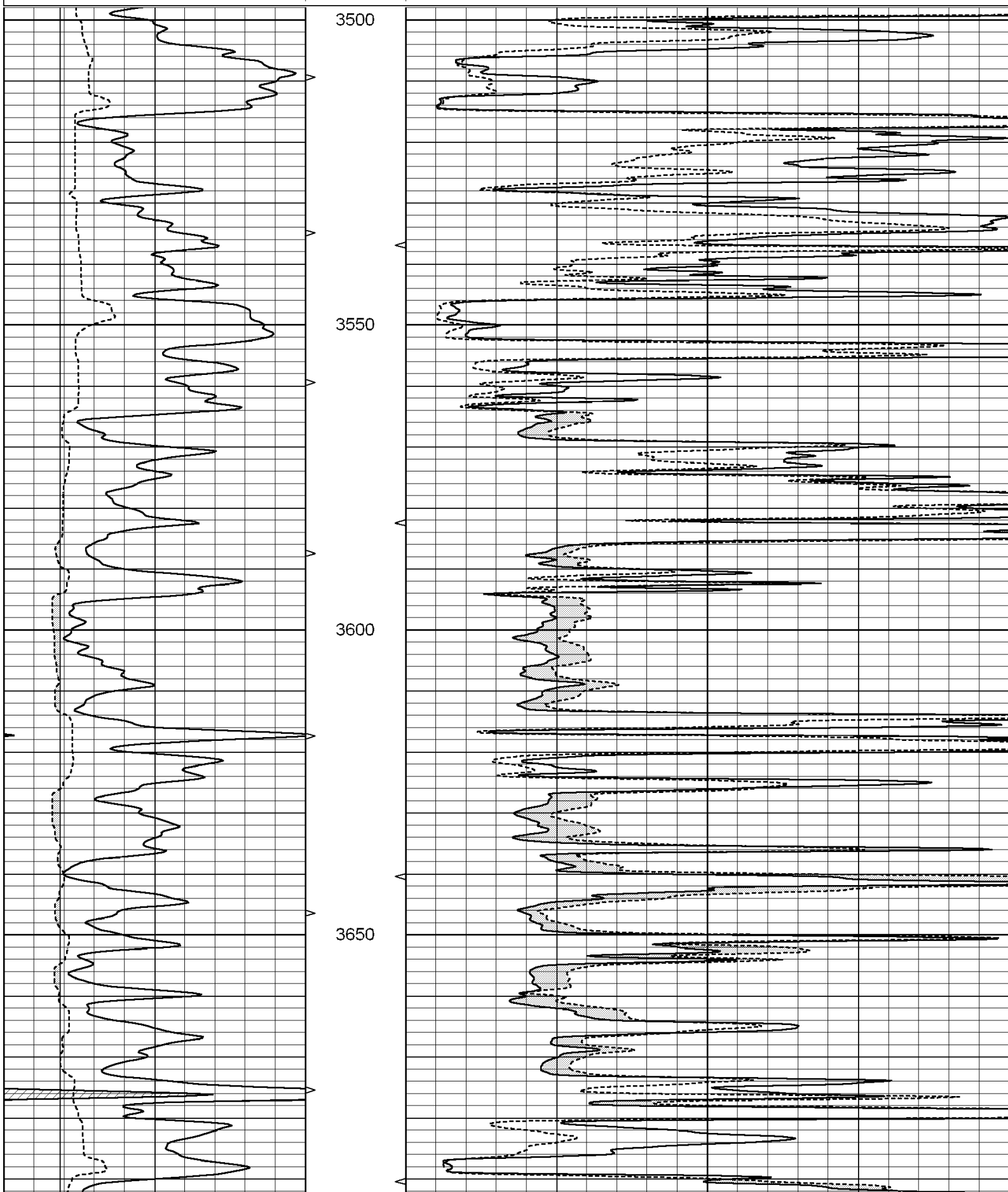
**Comments**

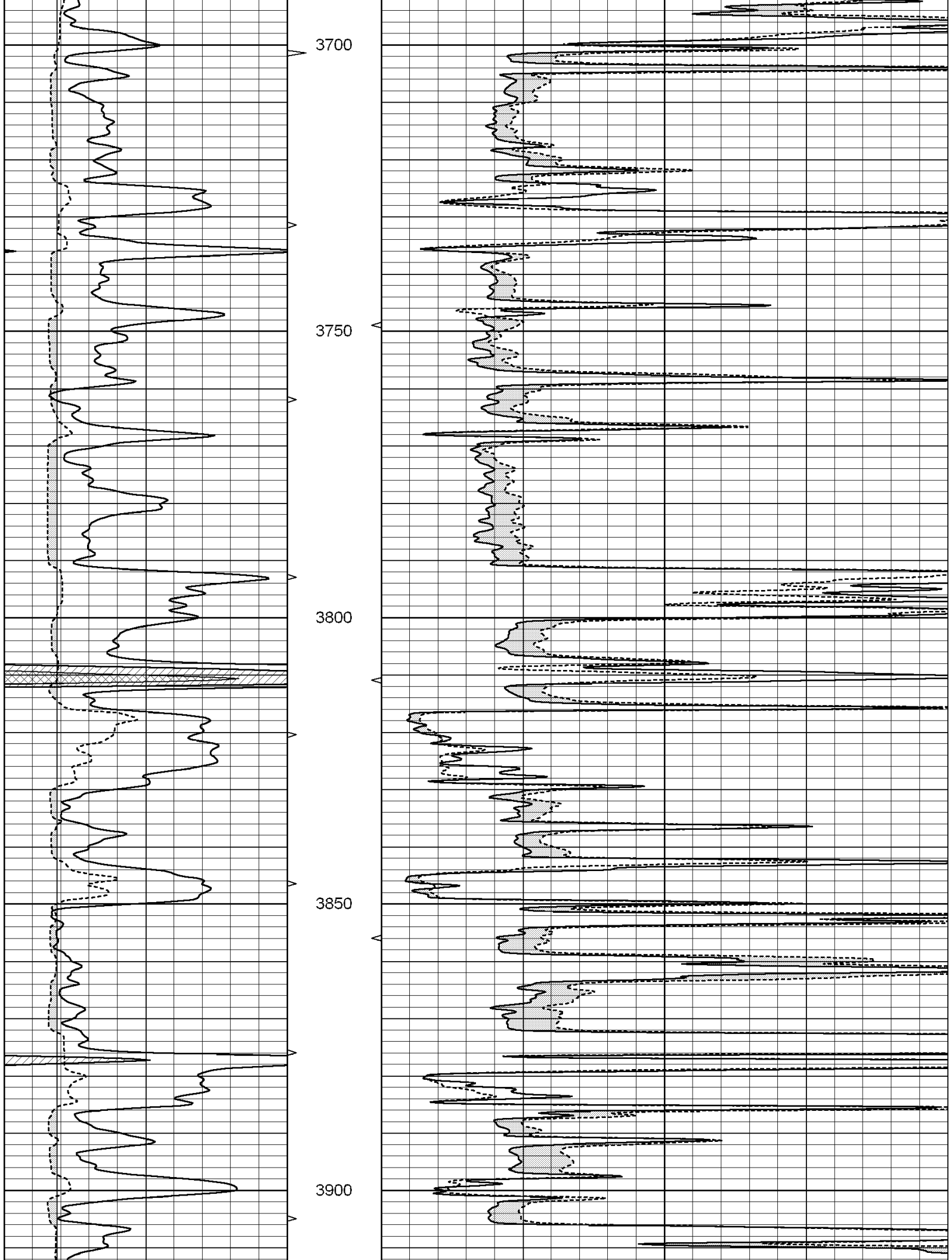
THANK YOU FOR USING SUPERIOR WELL SERVICES HAYS, KANSAS (785)628-6395  
DIRECTIONS  
UTICA KS., 3 W. TO QUINTER RD. - N. TO GOVE COUNTY RD. - W. TO FARMHOUSE  
N. ACROSS 3 CATTLE GUARDS - 1/4 W. - S. INTO

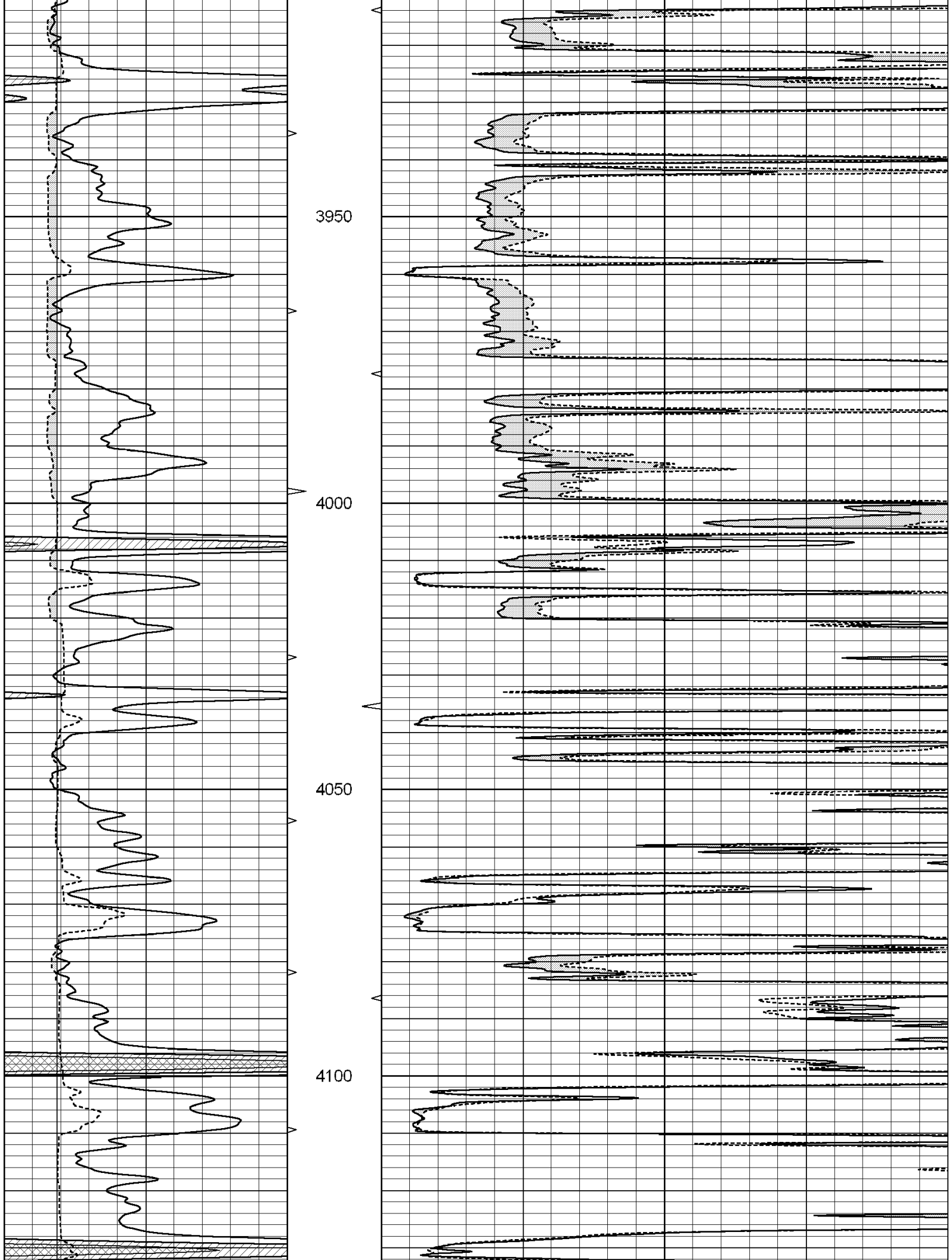
Charted by:

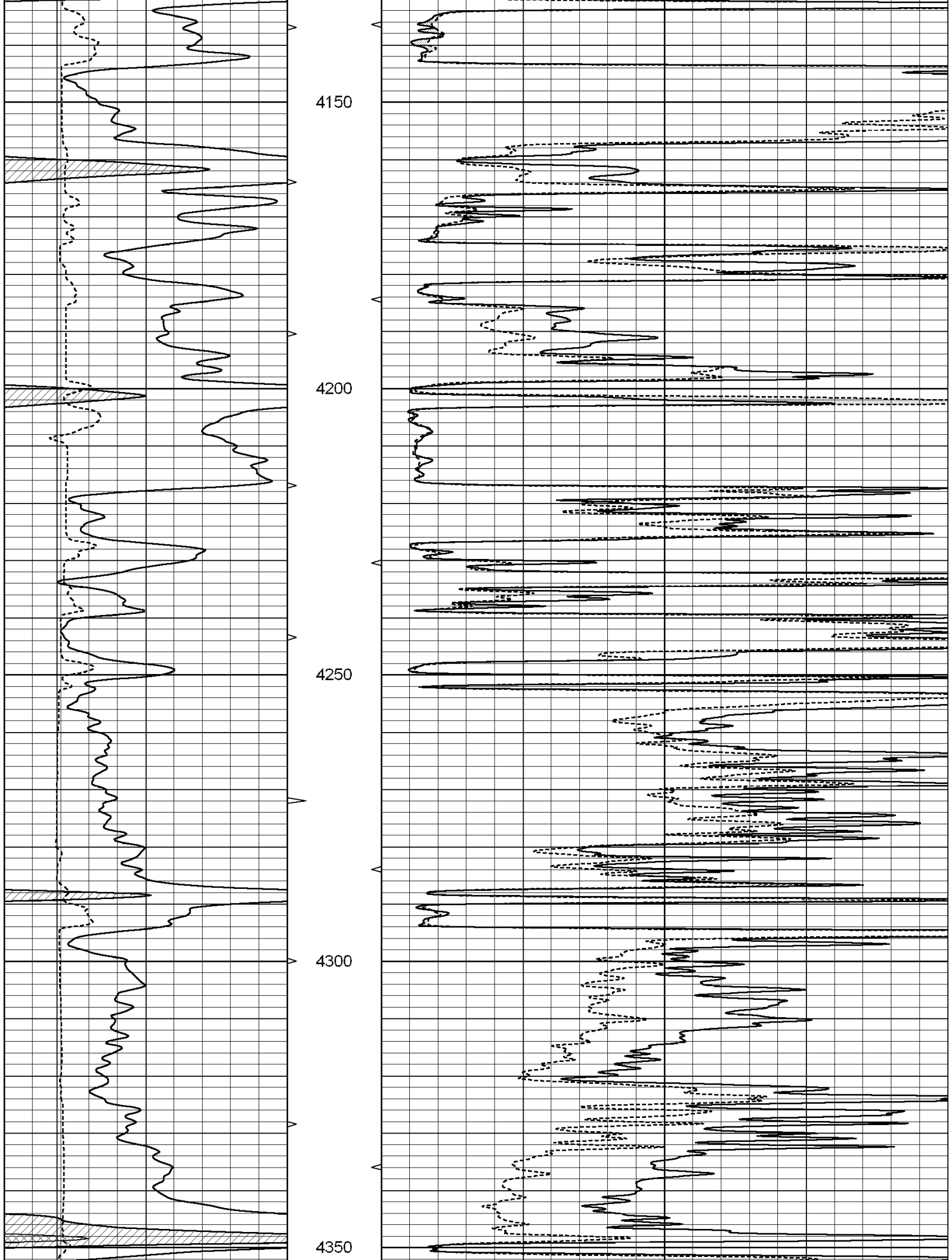
Depth in Feet scaled 1:240

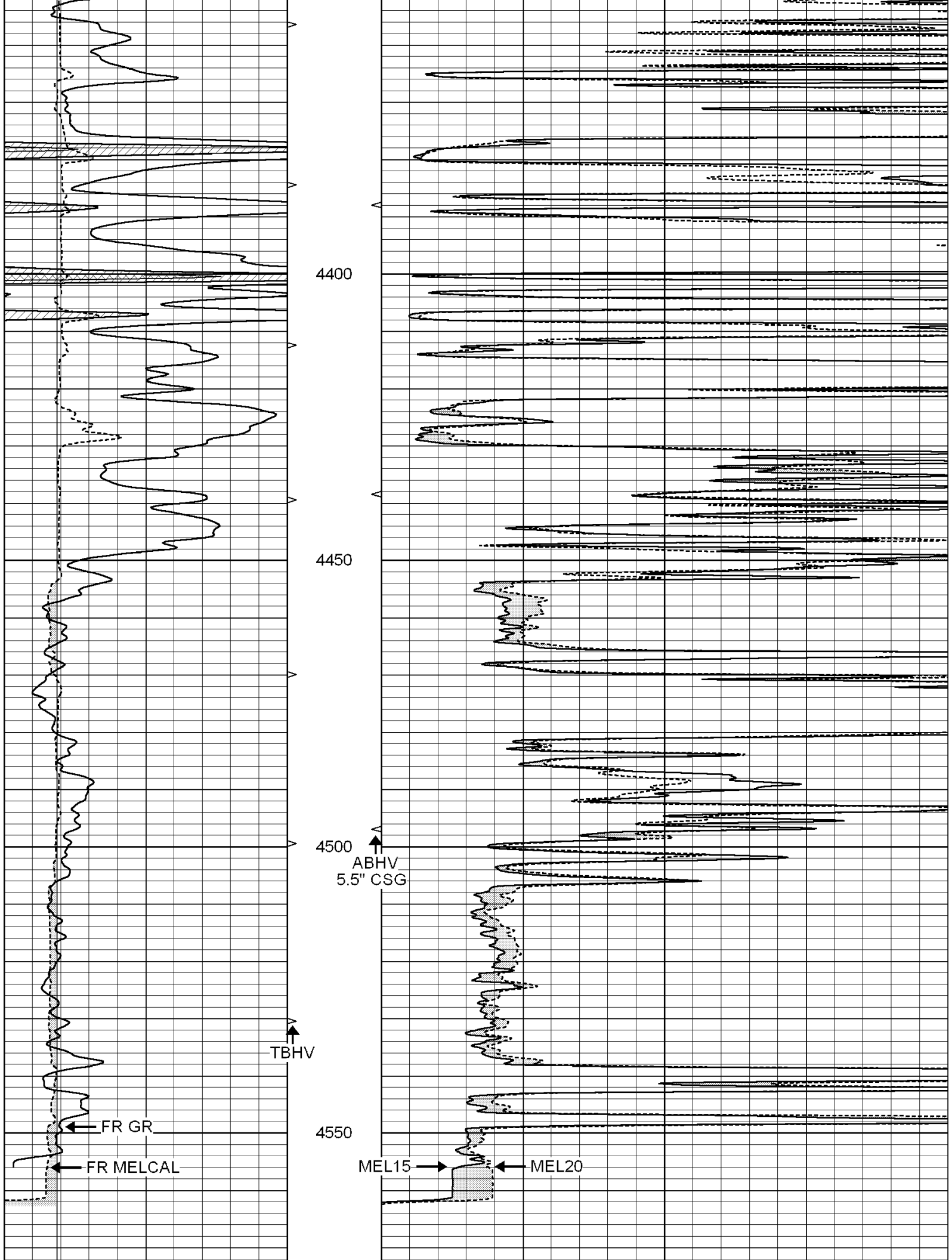
0	GAMMA RAY (GAPI)	150	ABHV	0	MEL1.5 (Ohm-m)	40
6	CALIPER (in)	16	10 (ft3) 0 0	0	MEL2.0 (Ohm-m)	40
			TBHV			
			0 (ft3) 10			











LTD 4574

0	GAMMA RAY (GAPI)	150	ABHV	0	MEL1.5 (Ohm-m)	40
6	CALIPER (in)	16	10 (ft3)	0 0	MEL2.0 (Ohm-m)	40
			TBHV			
			0 (ft3)	10		

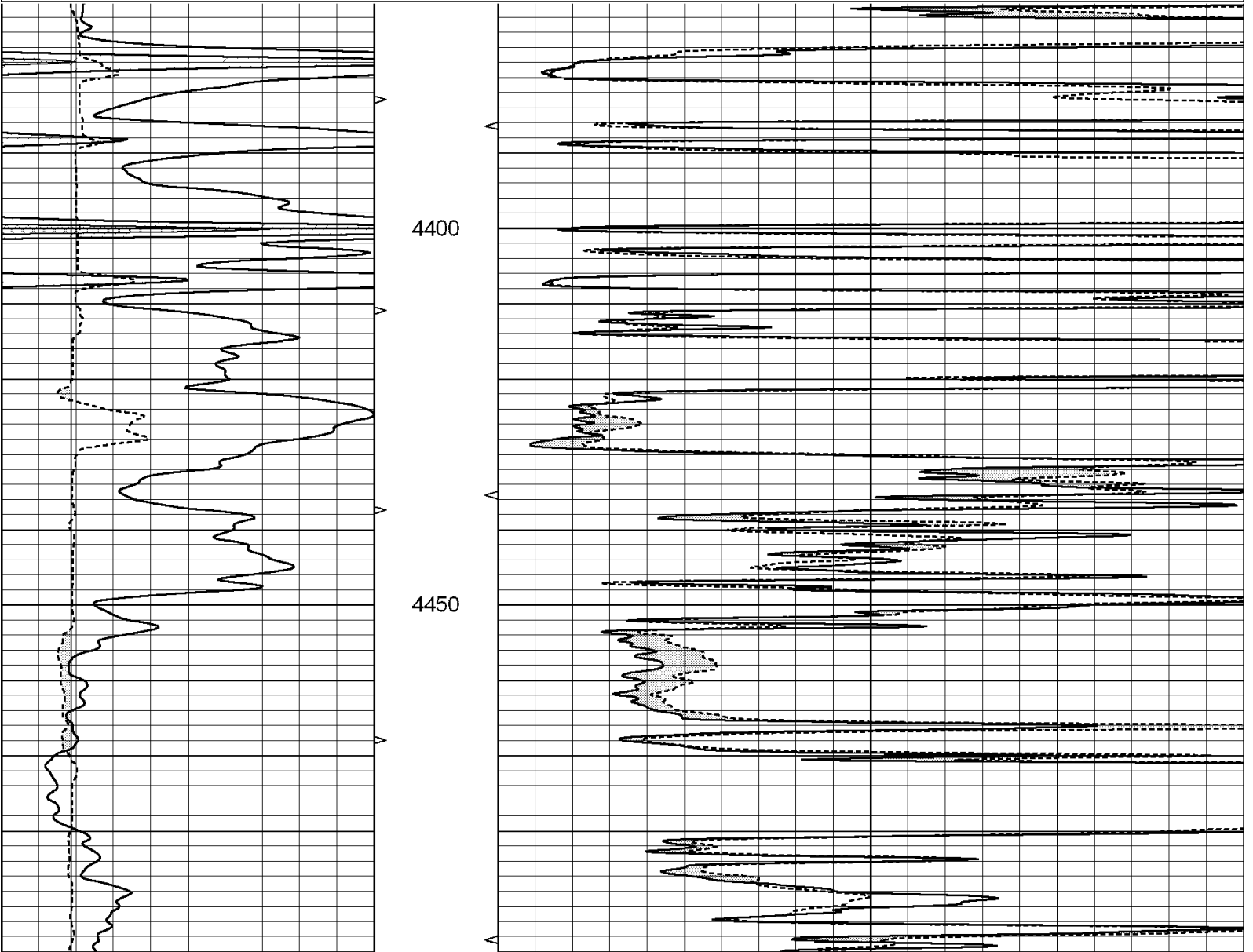


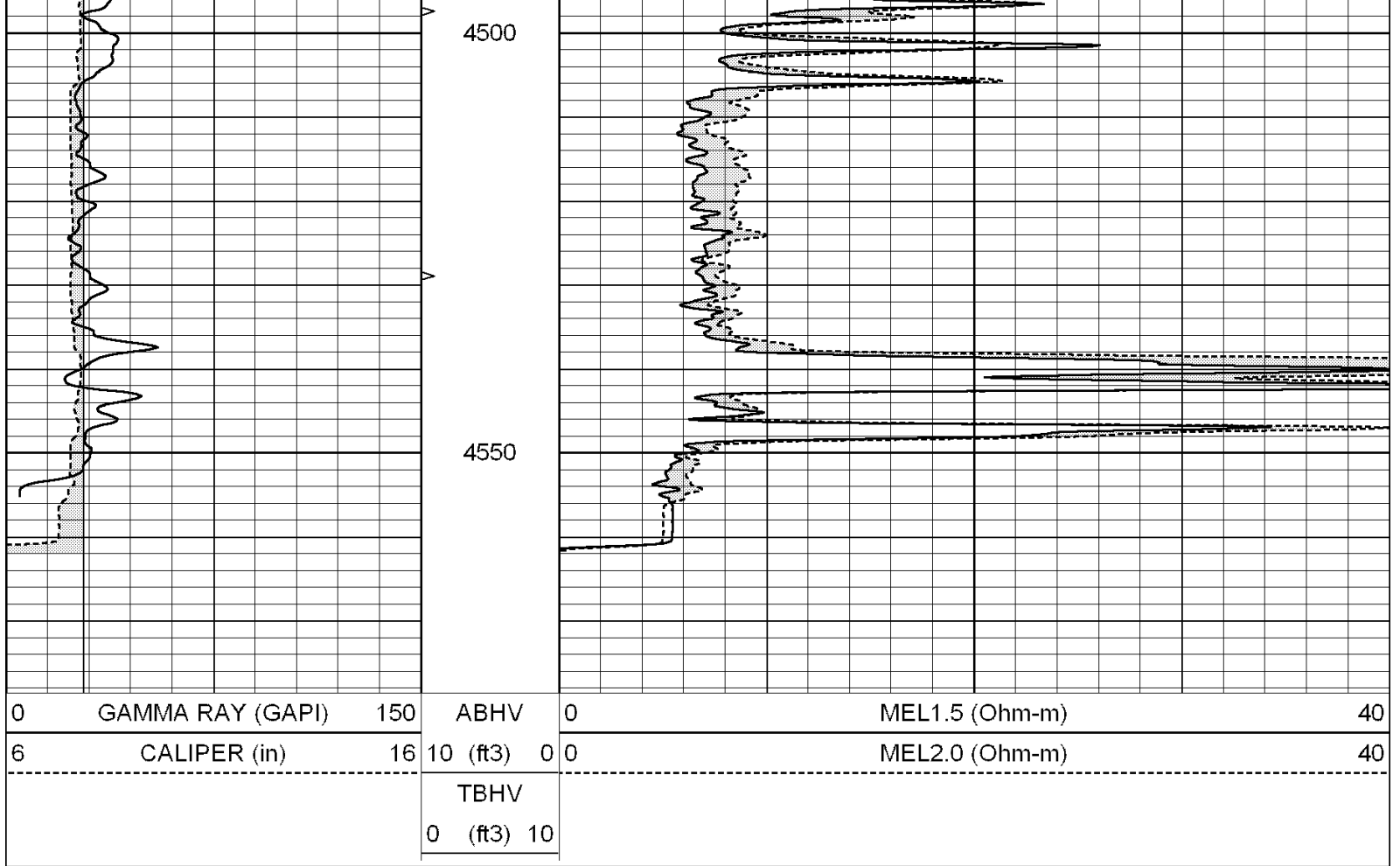
SUPERIOR  
Hays,  
Kansas

# REPEAT SECTION

Database File: 005106ddn.db  
 Dataset Pathname: pass5.1  
 Presentation Format: \_micro  
 Dataset Creation: Sat Mar 27 23:28:59 2010 by Calc Open-Cased 090629  
 Charted by: Depth in Feet scaled 1:240

0	GAMMA RAY (GAPI)	150	ABHV	0	MEL1.5 (Ohm-m)	40
6	CALIPER (in)	16	10 (ft3)	0 0	MEL2.0 (Ohm-m)	40
			TBHV			
			0 (ft3)	10		





### Calibration Report

Database File: 005106ddn.db  
 Dataset Pathname: pass5.1  
 Dataset Creation: Sat Mar 27 23:28:59 2010 by Calc Open-Cased 090629

### MICRO Calibration Report

Serial Number:	MICRO6	
Tool Model:	PROBE	
Performed:	Tue Feb 02 18:42:12 2010	
Caliper Calibration:	Gain=5.239	Offset=0.559
References	Low Cal	High Cal
Readings	8.000	14.000
	1.401	2.546
1.5" Calibration:	Gain=40.781	Offset=-0.851
References	Low Cal	High Cal
Readings	0.000	20.000
	0.008	1.200
2" Calibration:	Gain=40.739	Offset=-0.193
References	Low Cal	High Cal
Readings	0.000	20.000
	0.008	0.888

### Gamma Ray Calibration Report

Serial Number:	GR6
Tool Model:	OPEN
Performed:	Tue Nov 10 08:32:36 2009

Calibrator Value:	150.0	GAPI
Background Reading:	0.0	cps
Calibrator Reading:	276.0	cps
Sensitivity:	0.5535	GAPI/cps