



**SUPERIOR
Hays,
Kansas**

**SONIC
LOG**

Company MULL DRILLING COMPANY, INC.
Well #1-31 CURTIS "D"
Field WILDCAT
County GOVE
State KANSAS

Company MULL DRILLING COMPANY, INC.
Well #1-31 CURTIS "D"
Field WILDCAT
County GOVE State KANSAS

Location: API #: 15-063-21833-0000
990' FSL & 1101' FWL
SEC 31 TWP 15S RGE 27W
Permanent Datum GROUND LEVEL Elevation 2563
Log Measured From KELLY BUSHING 9' A.G.L.
Drilling Measured From KELLY BUSHING
Other Services
CDL/CNL
DIL/MEL
Elevation
K.B. 2672
D.F. 2570
G.L. 2563

Date	3-27-10
Run Number	TWO
Depth Driller	4570
Depth Logger	4574
Bottom Logged Interval	4564
Top Log Interval	200
Casing Driller	8 5/8" @ 232
Casing Logger	232
Bit Size	7 7/8
Type Fluid In Hole	CHEMICAL MUD
Density / Viscosity	9.3/62
pH / Fluid Loss	10.0/8.4
Source of Sample	FLOWLINE
Rm @ Meas. Temp	1.3 @ 64F
Rmf @ Meas. Temp	.975 @ 64F
Rmc @ Meas. Temp	1.56 @ 64F
Source of Rmf / Rmc	MEASURED
Rm @ BHT	.687 @ 121F
Time Circulation Stopped	2 HOURS
Time Logger on Bottom	
Maximum Recorded Temperature	121F
Equipment Number	680
Location	HAYS, KANSAS
Recorded By	JASON CAPPELLUCCI
Witnessed By	KEVIN KESSLER

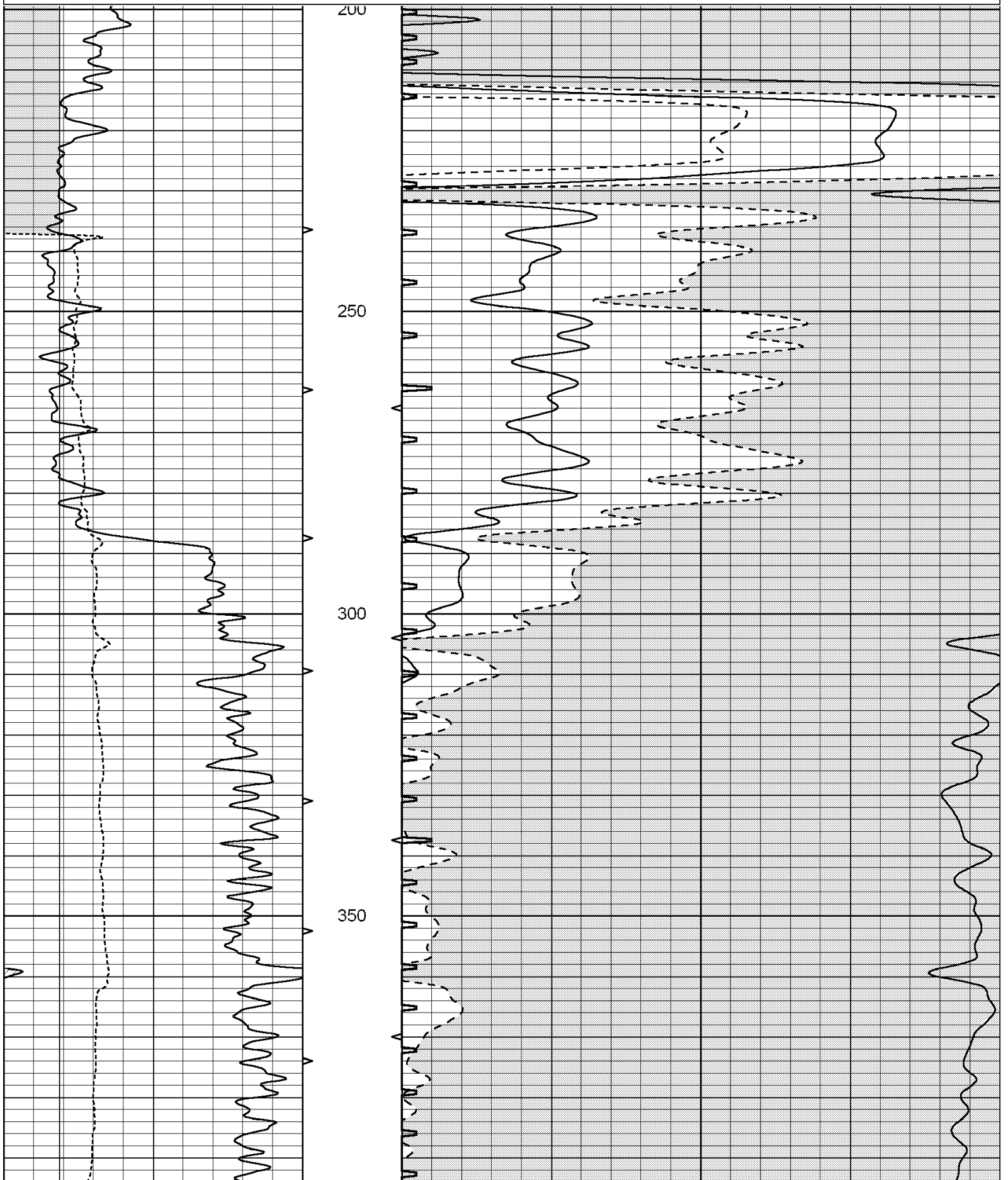
<<< Fold Here >>>

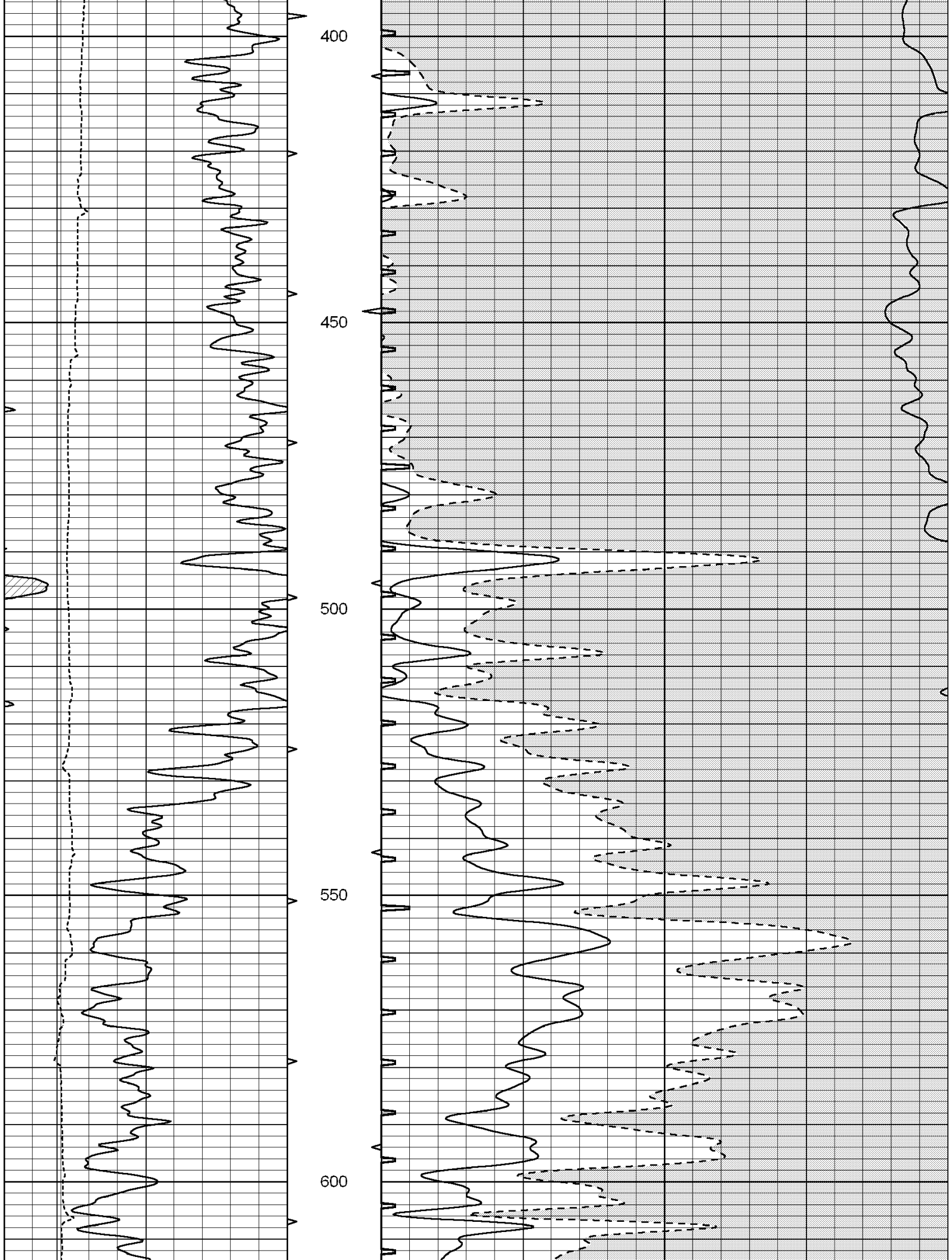
All interpretations are opinions based on inferences from electrical or other measurements and we cannot and do not guarantee the accuracy or correctness of any interpretation, and we shall not, except in the case of gross or willful negligence on our part, be liable or responsible for any loss, costs, damages, or expenses incurred or sustained by anyone resulting from any interpretation made by any of our officers, agents or employees. These interpretations are also subject to our general terms and conditions set out in our current Price Schedule.

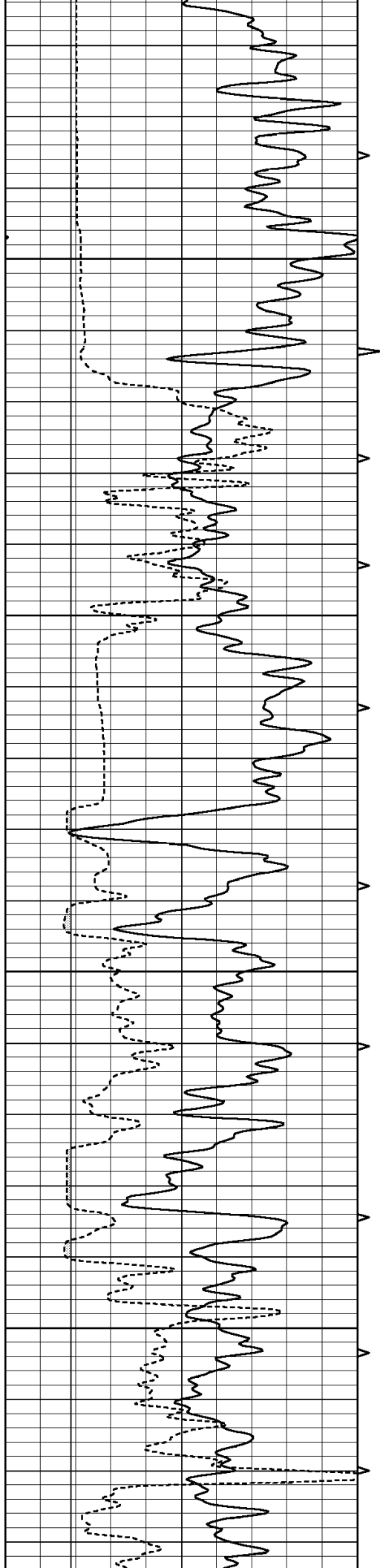
Comments

THANK YOU FOR USING SUPERIOR WELL SERVICES HAYS, KANSAS (785)628-6395
DIRECTIONS
UTICA KS., 3 W. TO QUINTER RD. - N. TO GOVE COUNTY RD. - W. TO FARMHOUSE
N. ACROSS 3 CATTLE GUARDS - 1/4 W. - S. INTO

0	GAMMA RAY (GAPI)	150	ABHV	140	DELTA TIME (usec/ft)	40
6	CALIPER (in)	16	10 (ft3) 0	30	SONIC POROSITY (pu)	-10
			TBHV	0	ITT (msec)	20
			0 (ft3) 10			





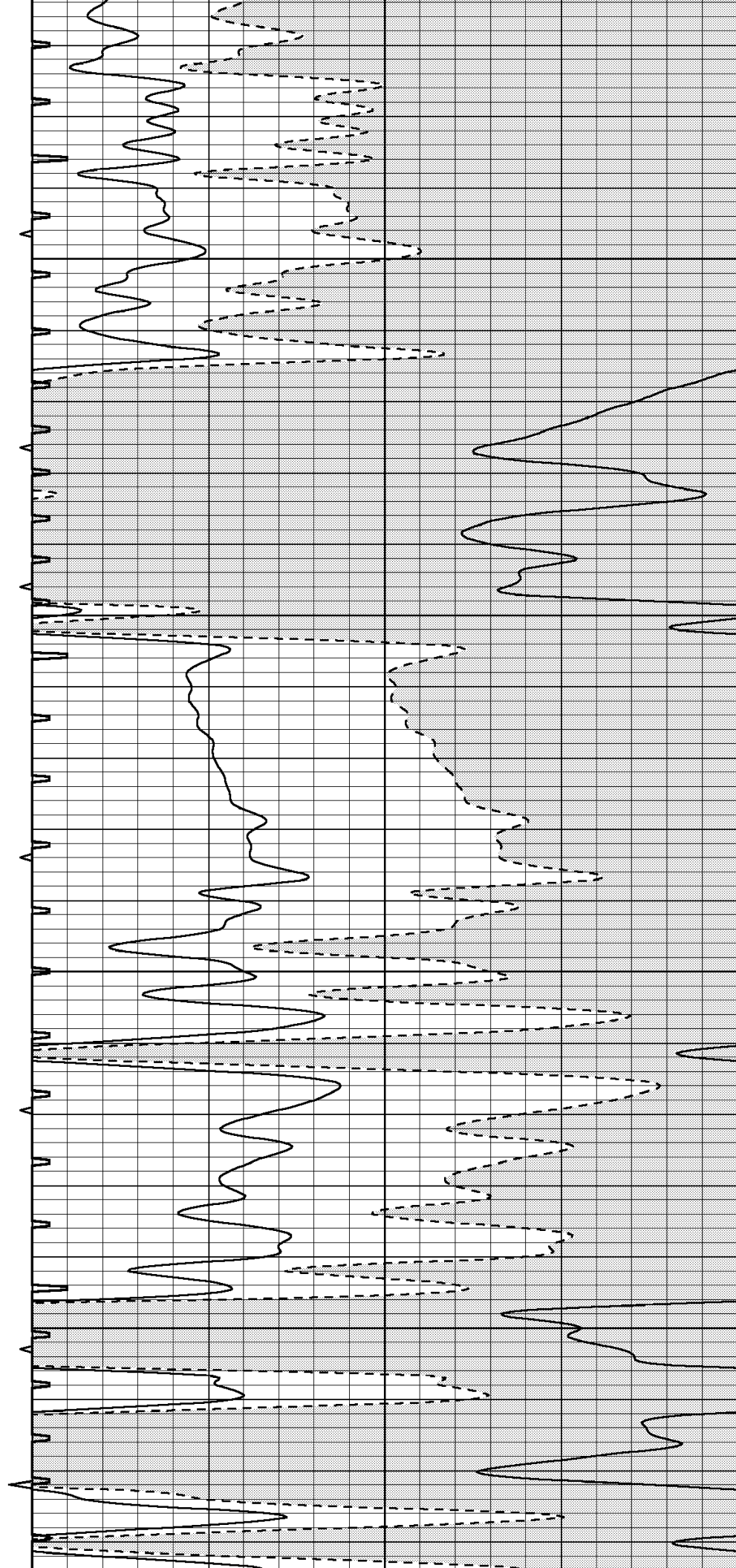


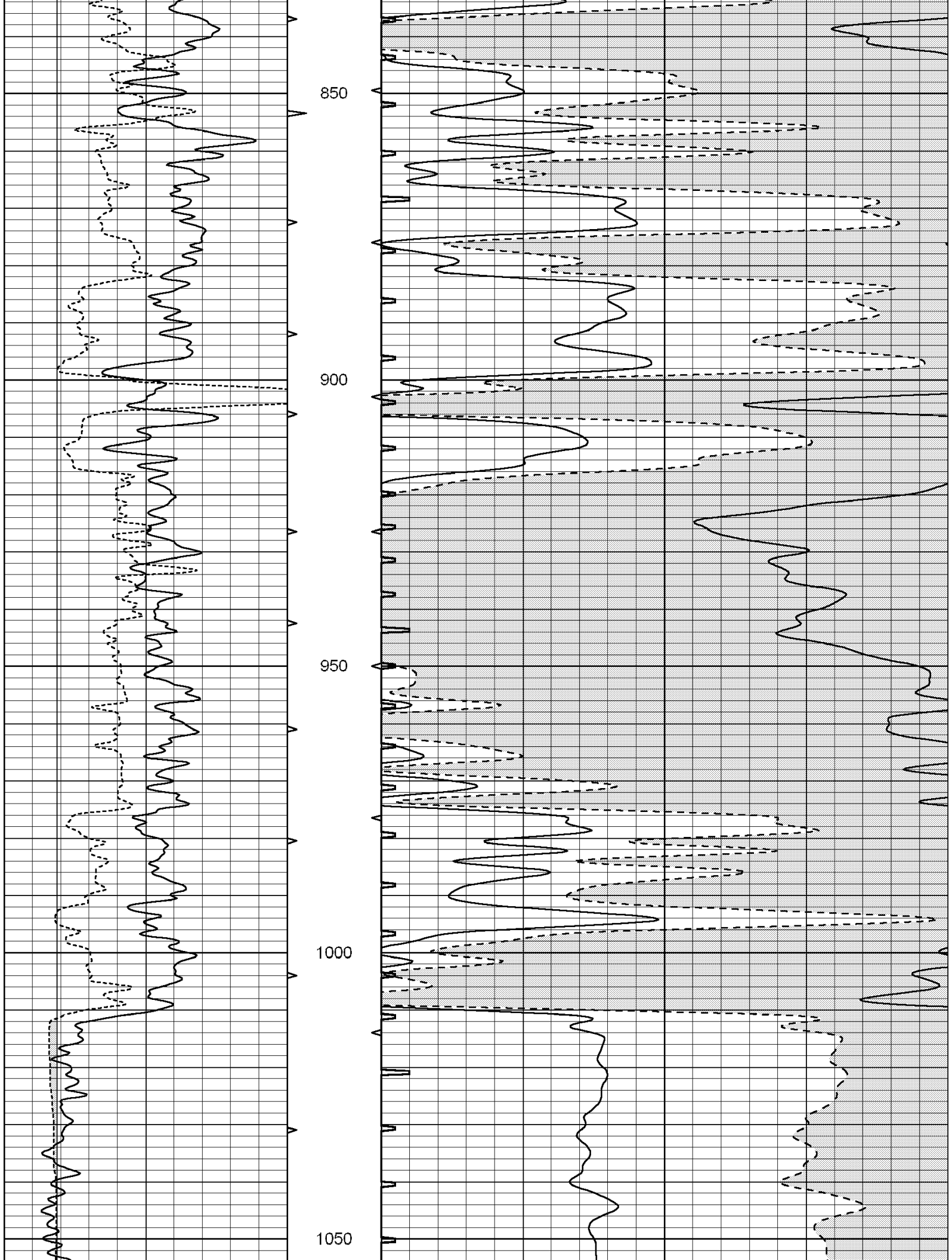
650

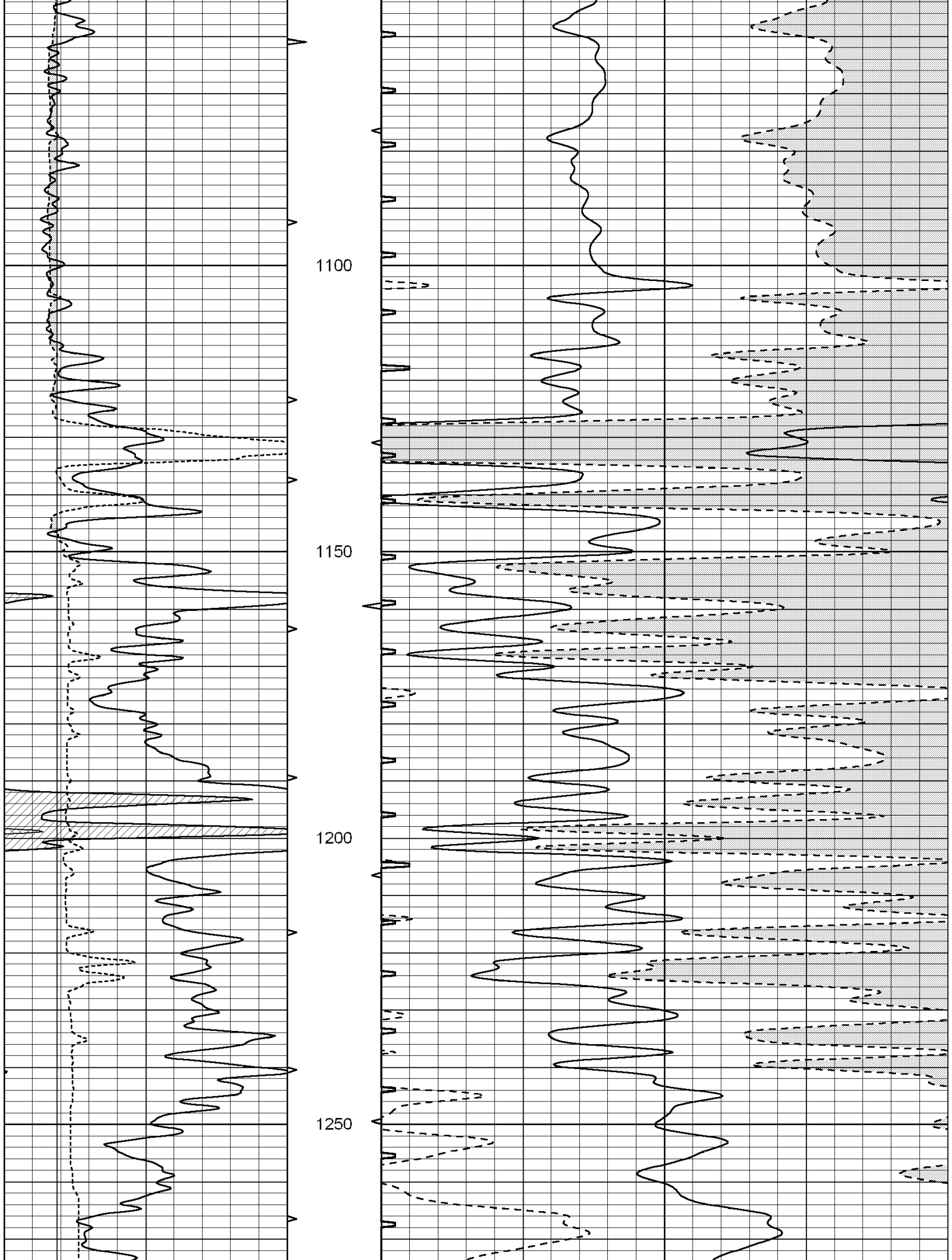
700

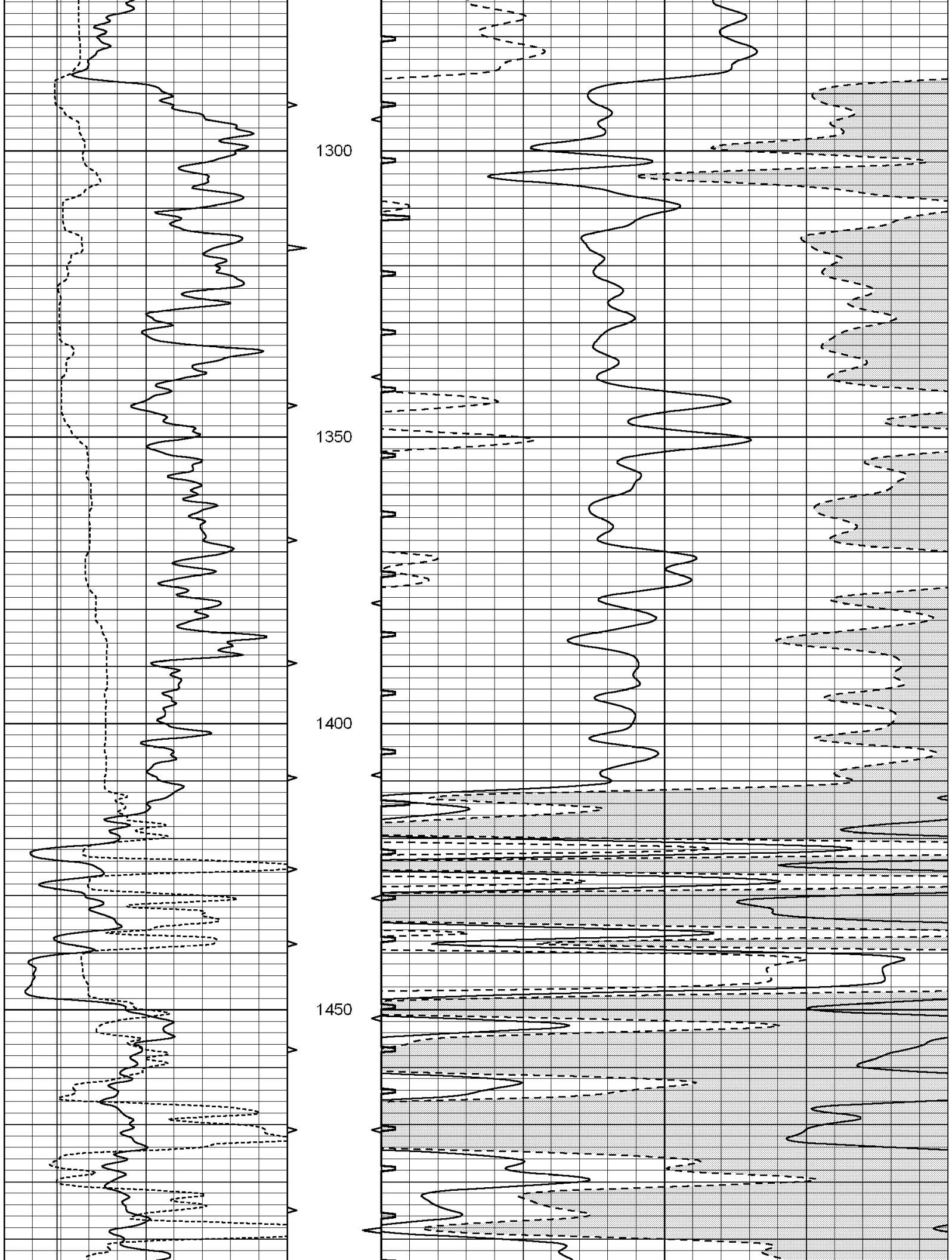
750

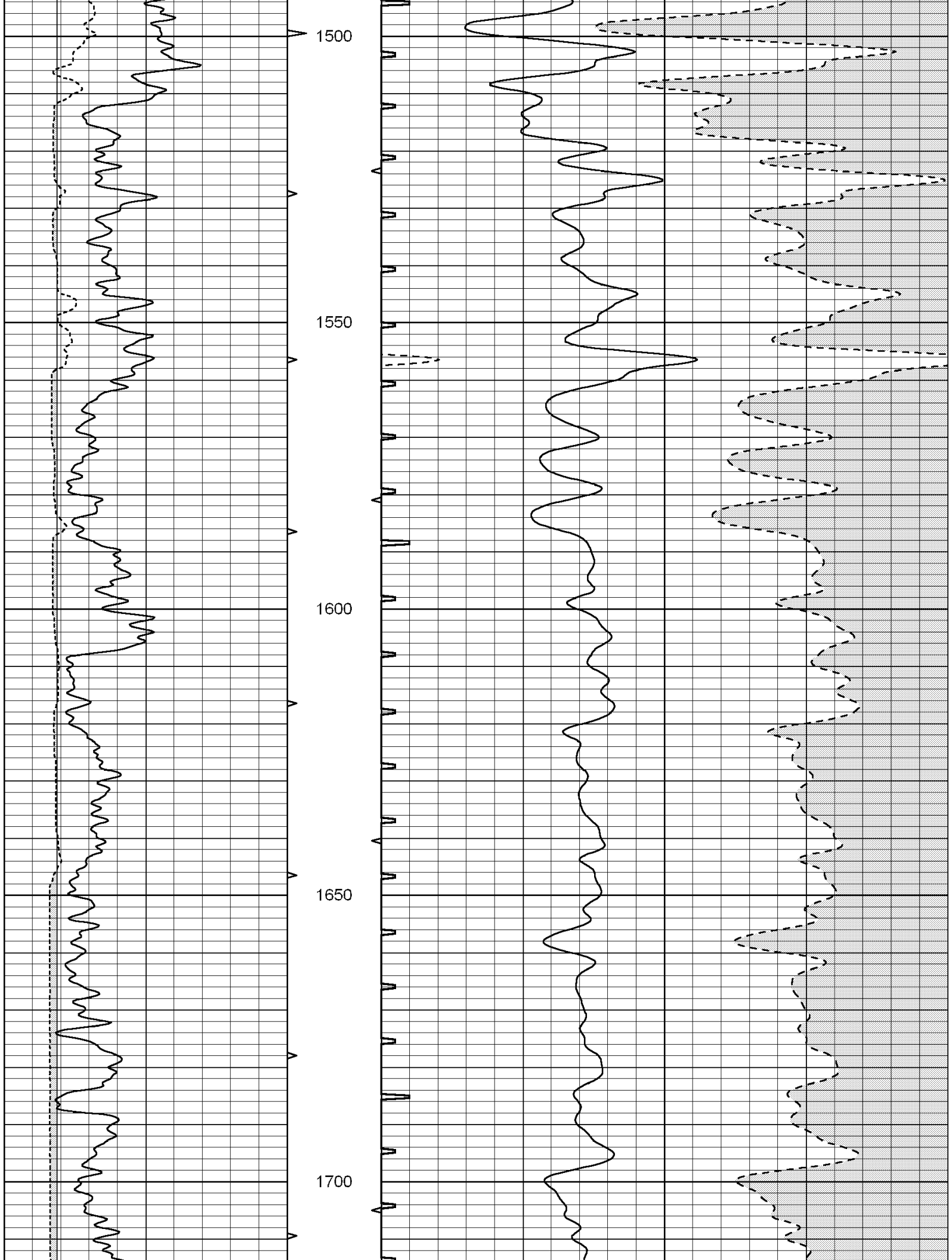
800

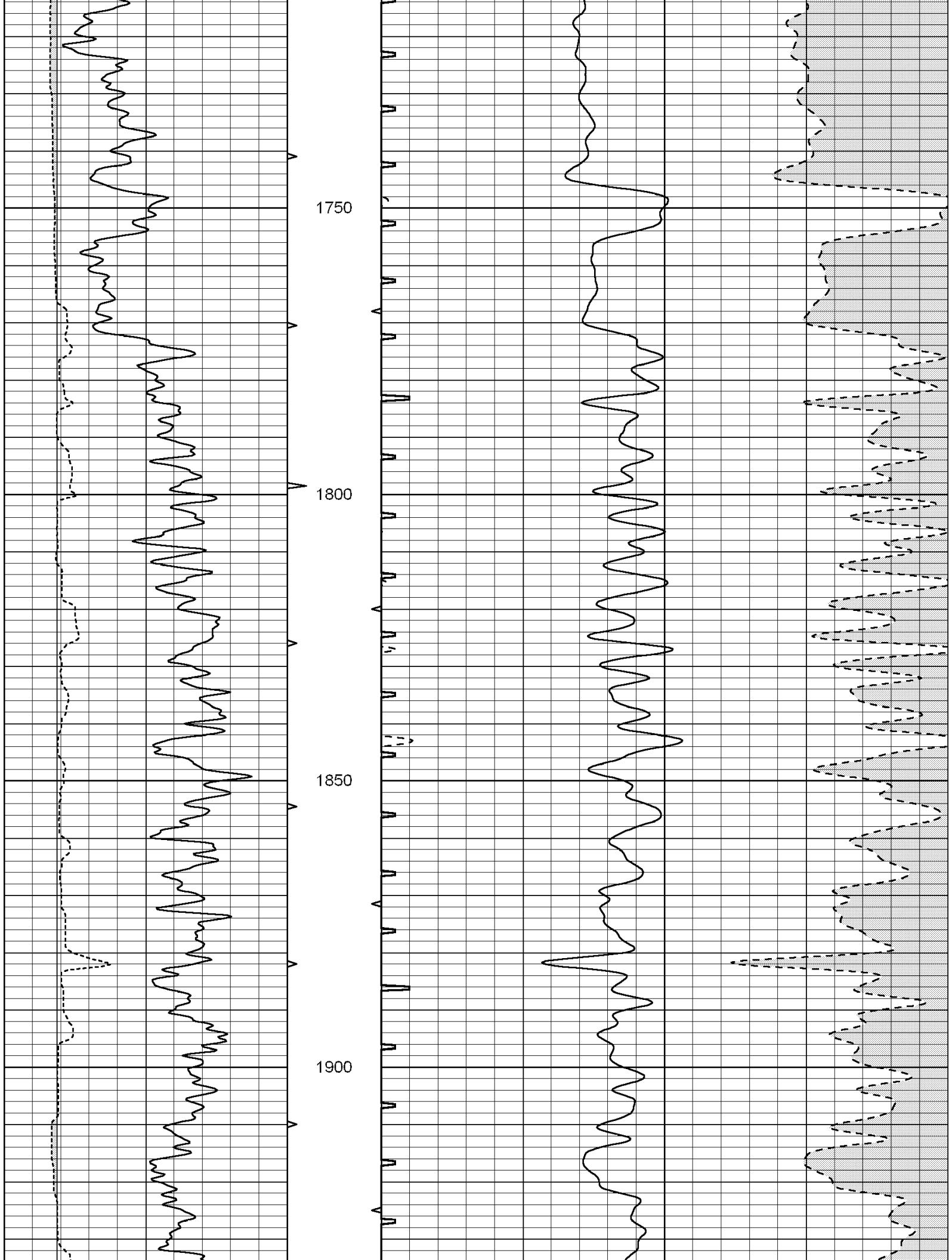


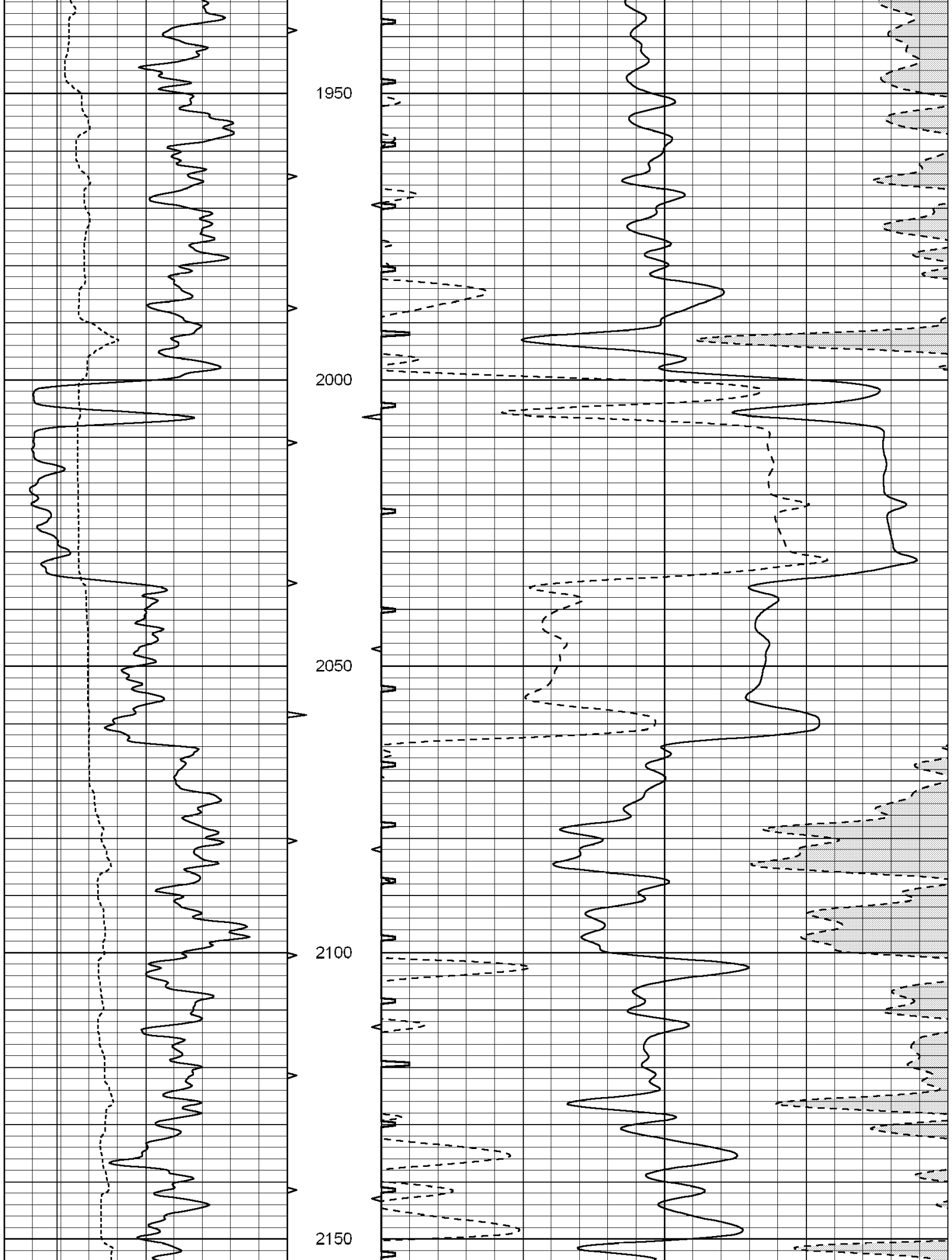


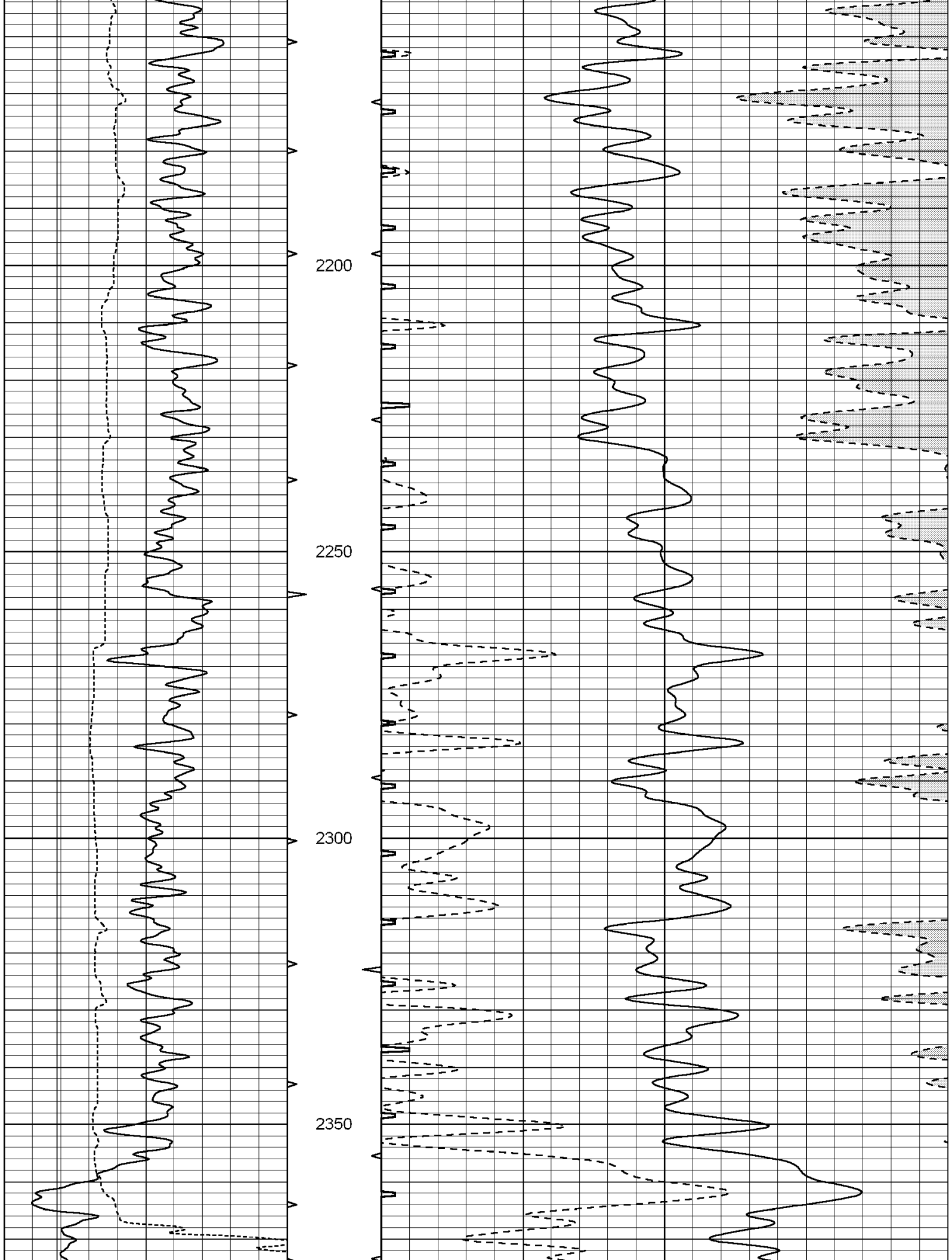


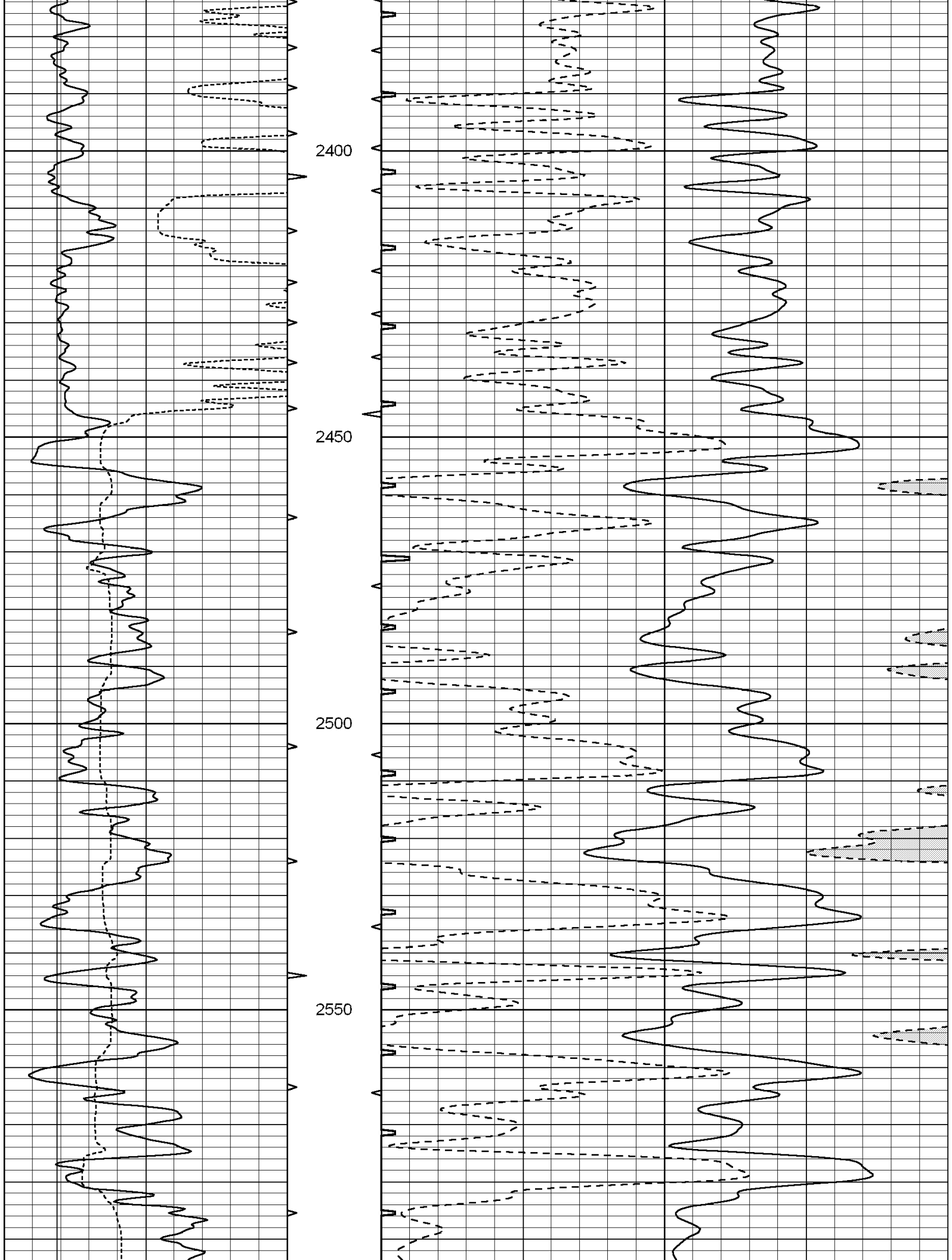


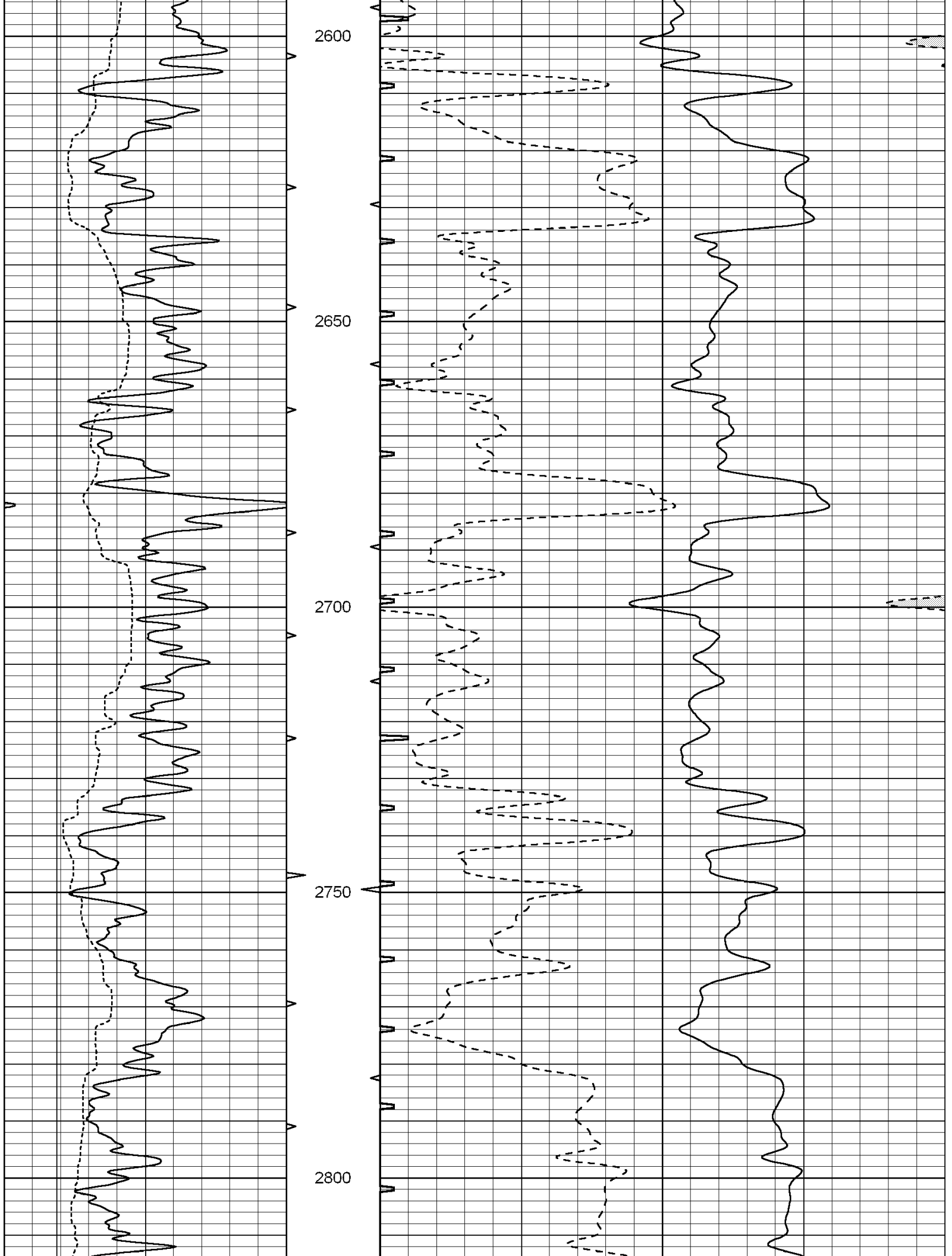


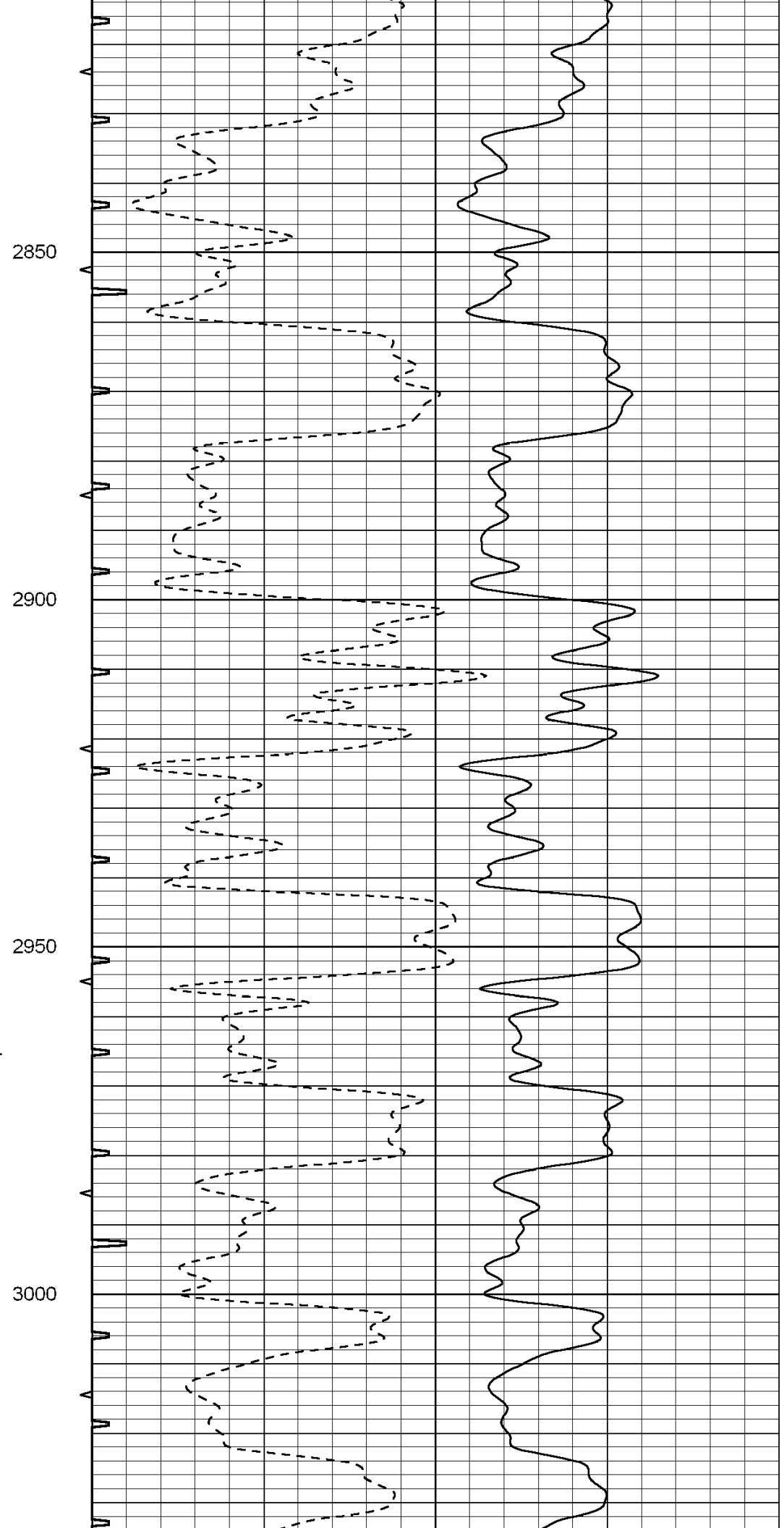
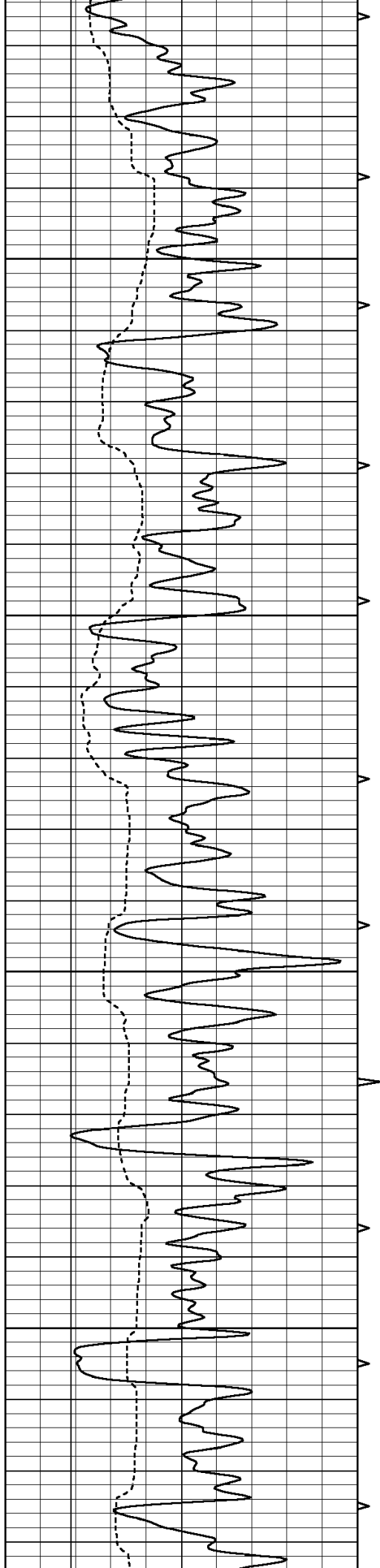


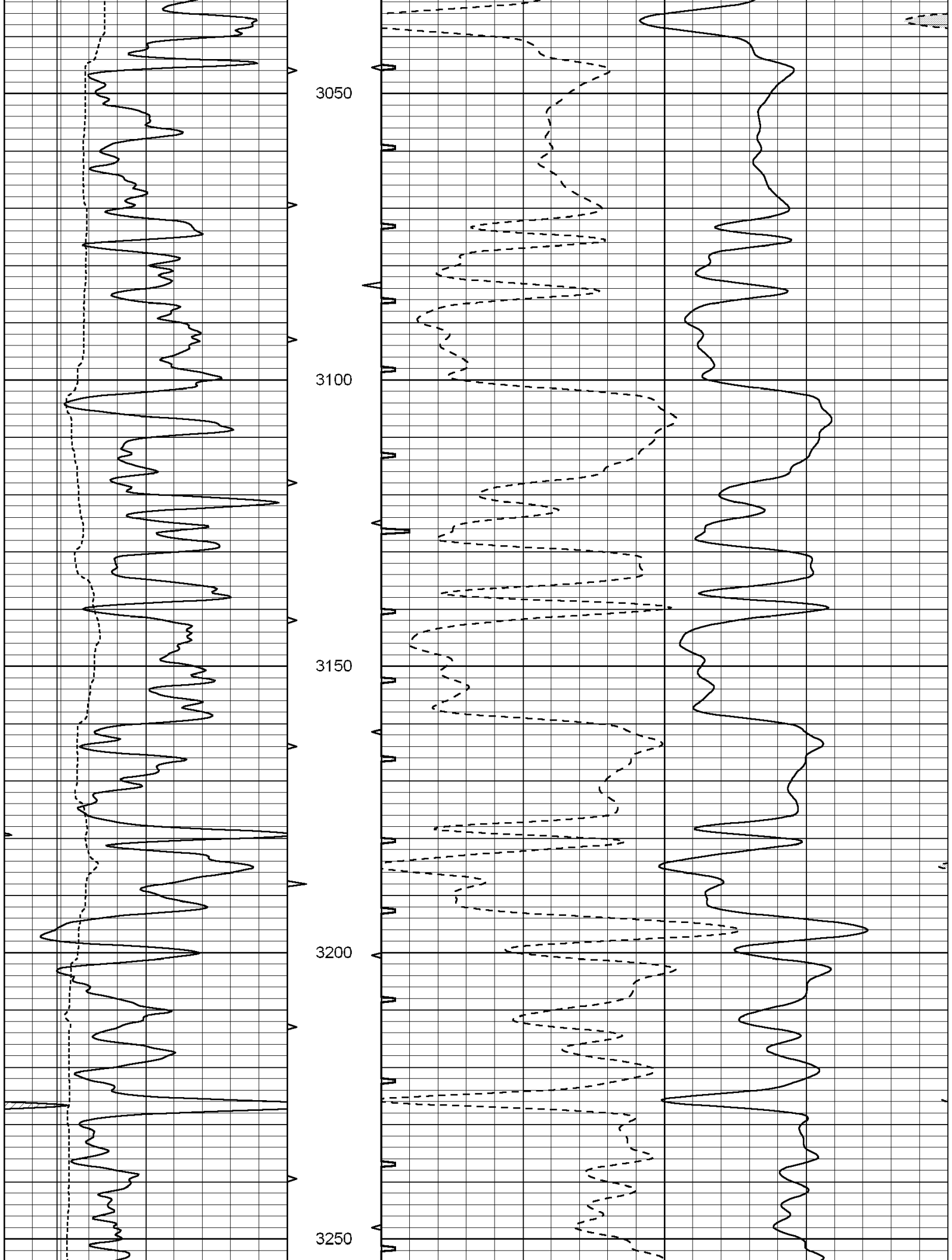


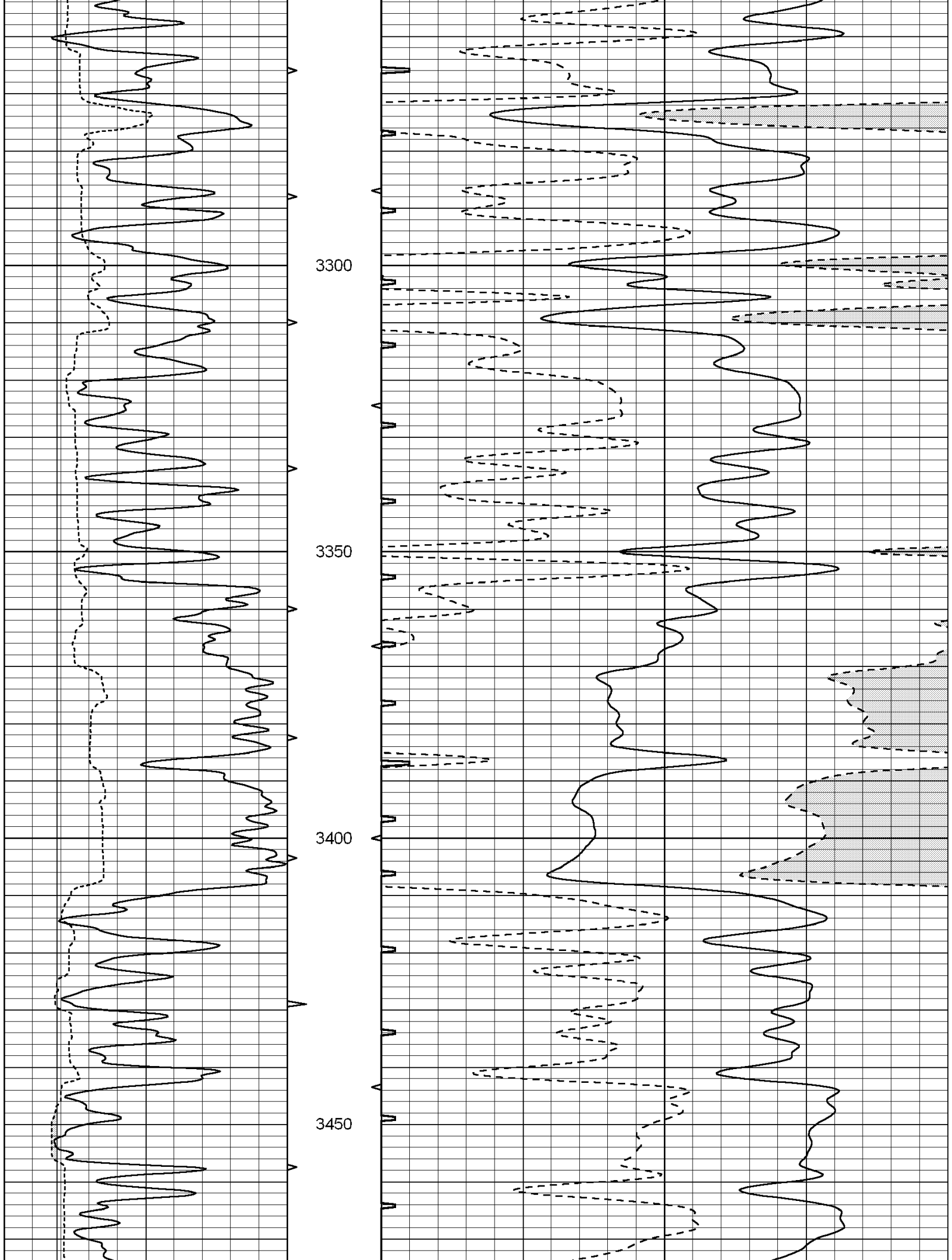


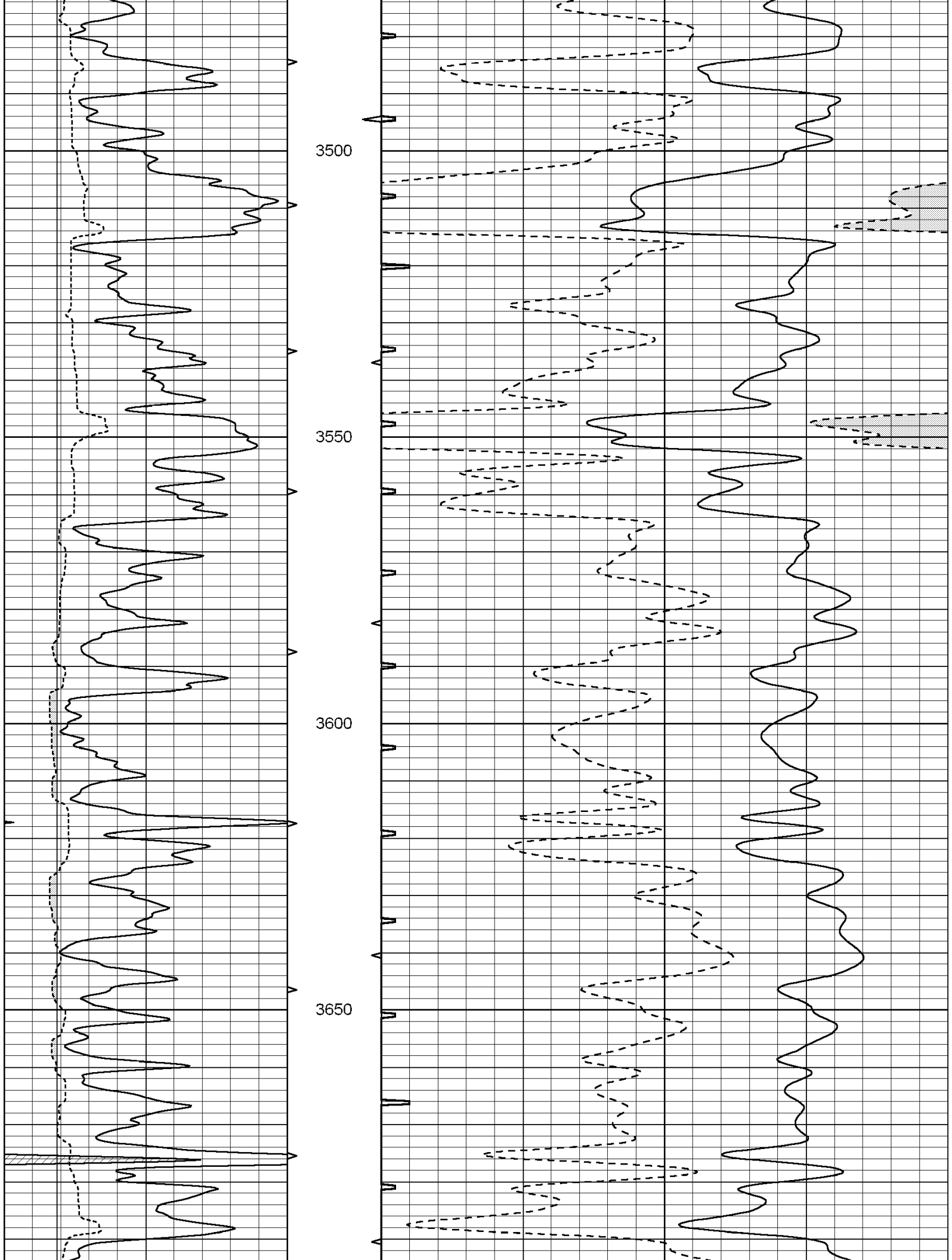


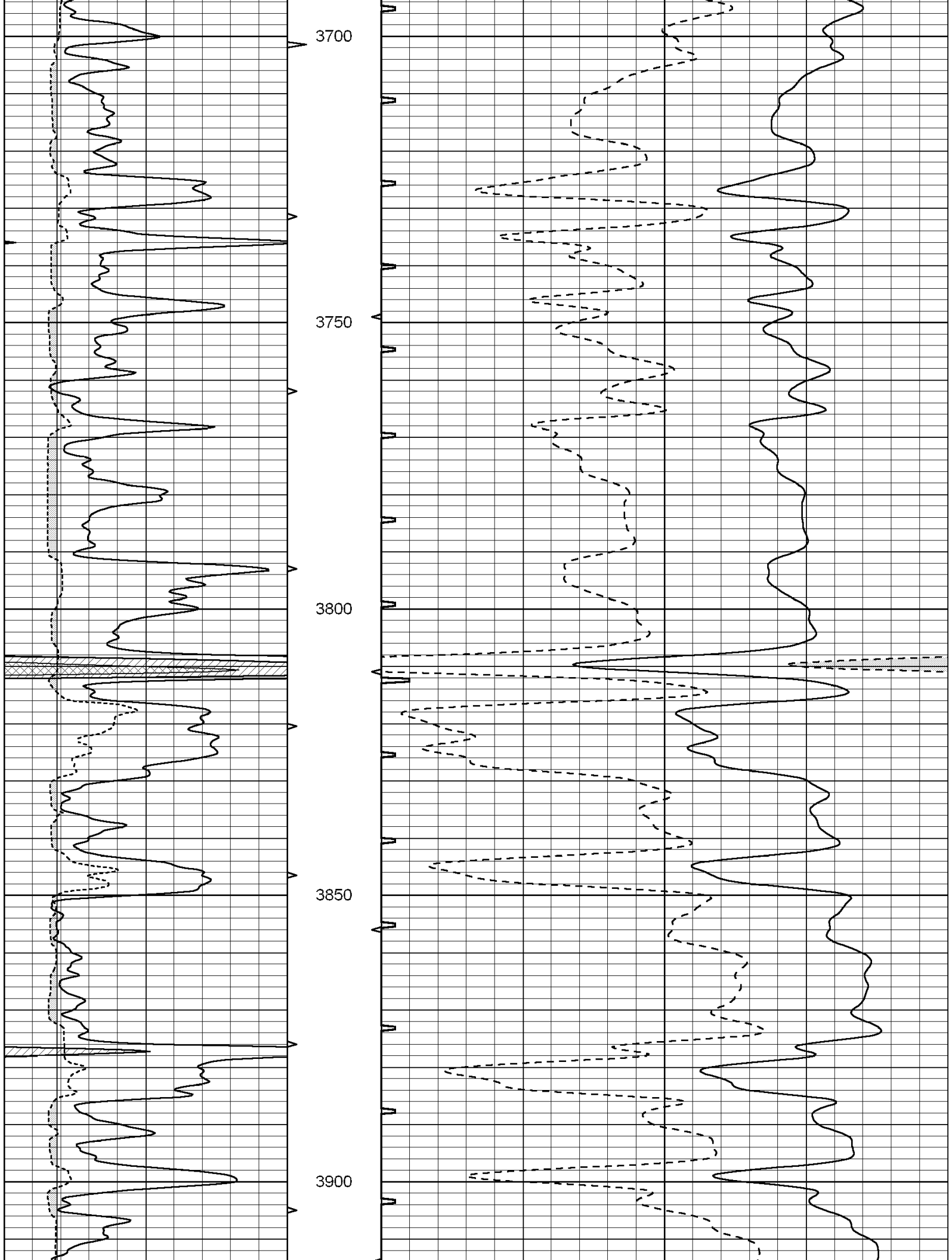


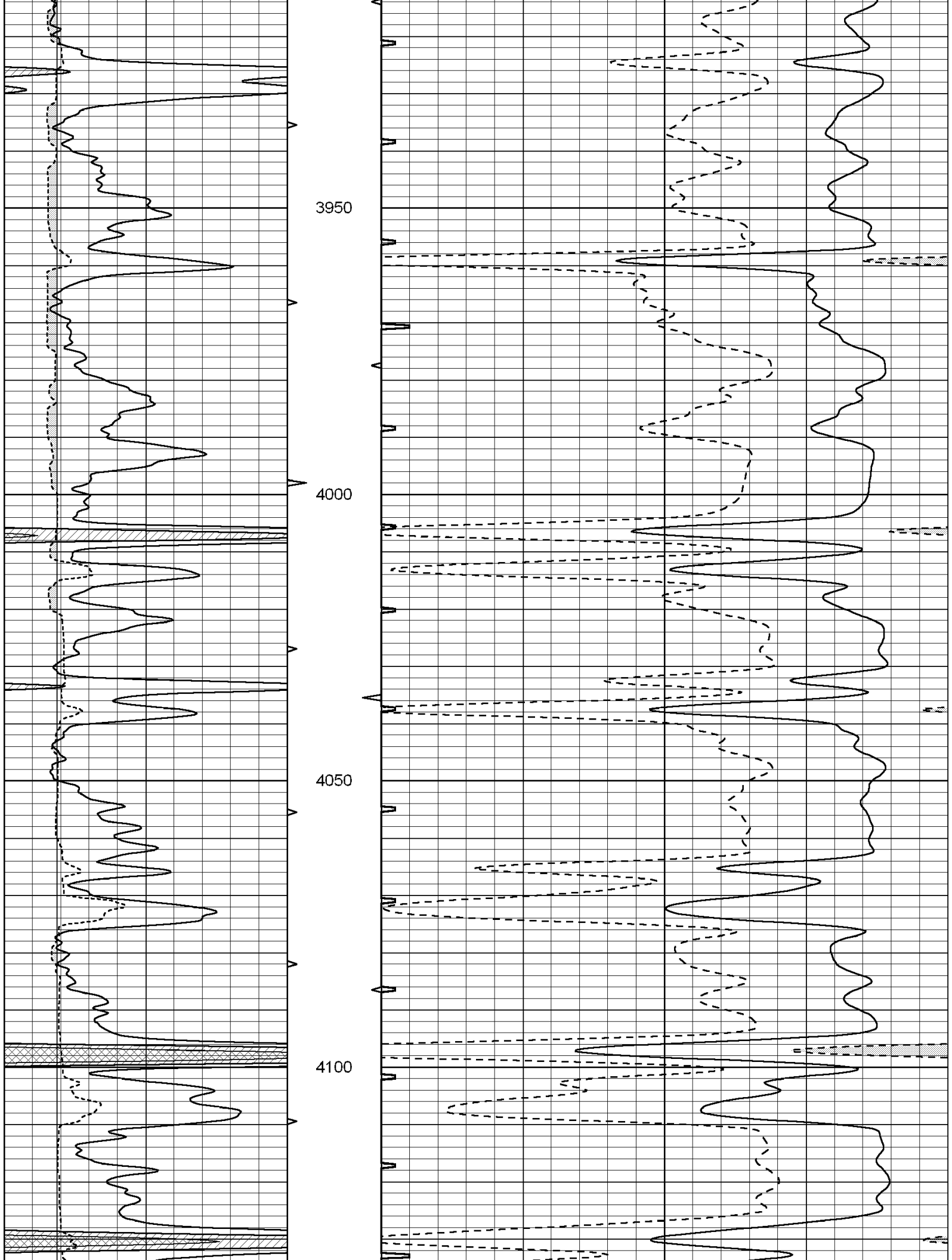


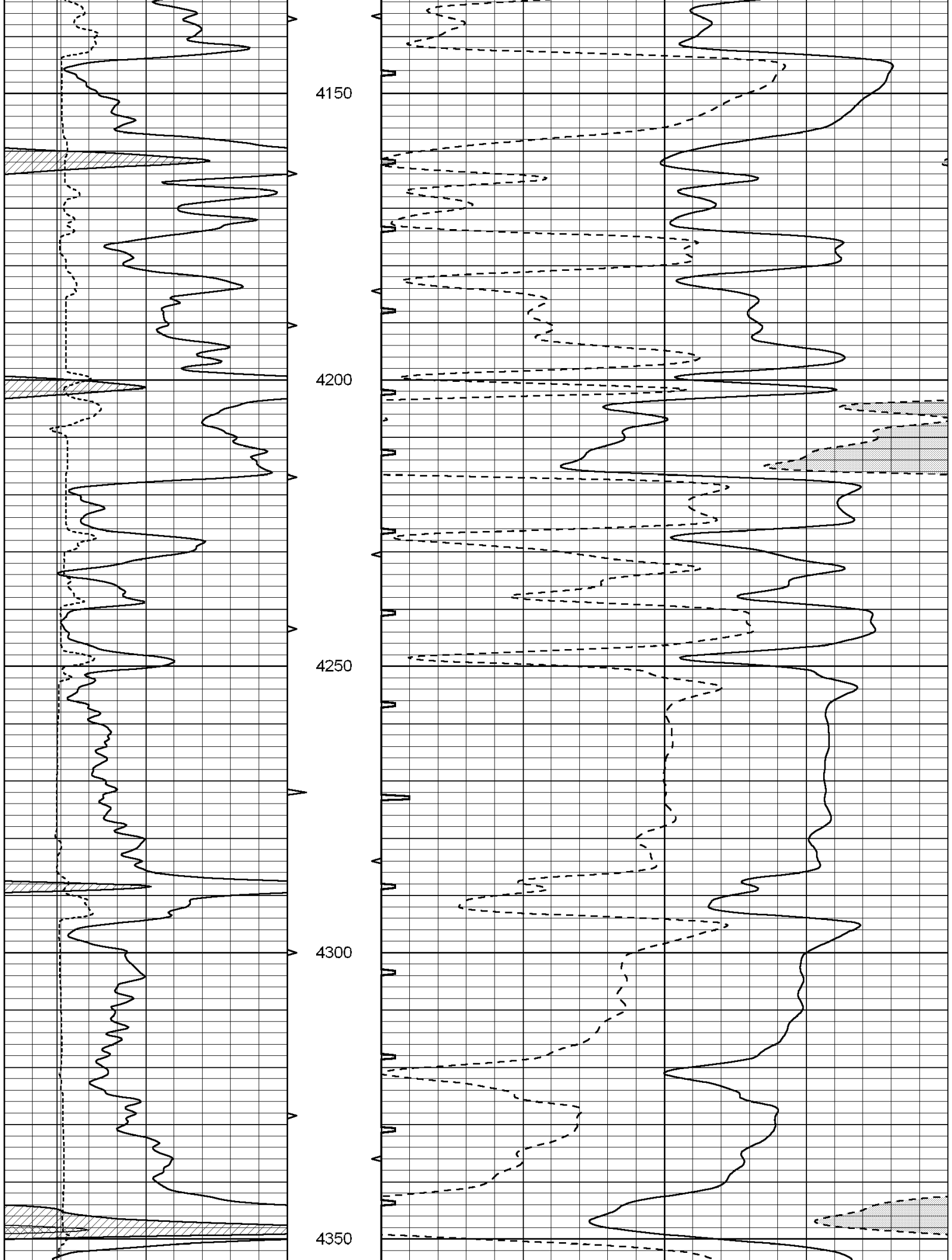


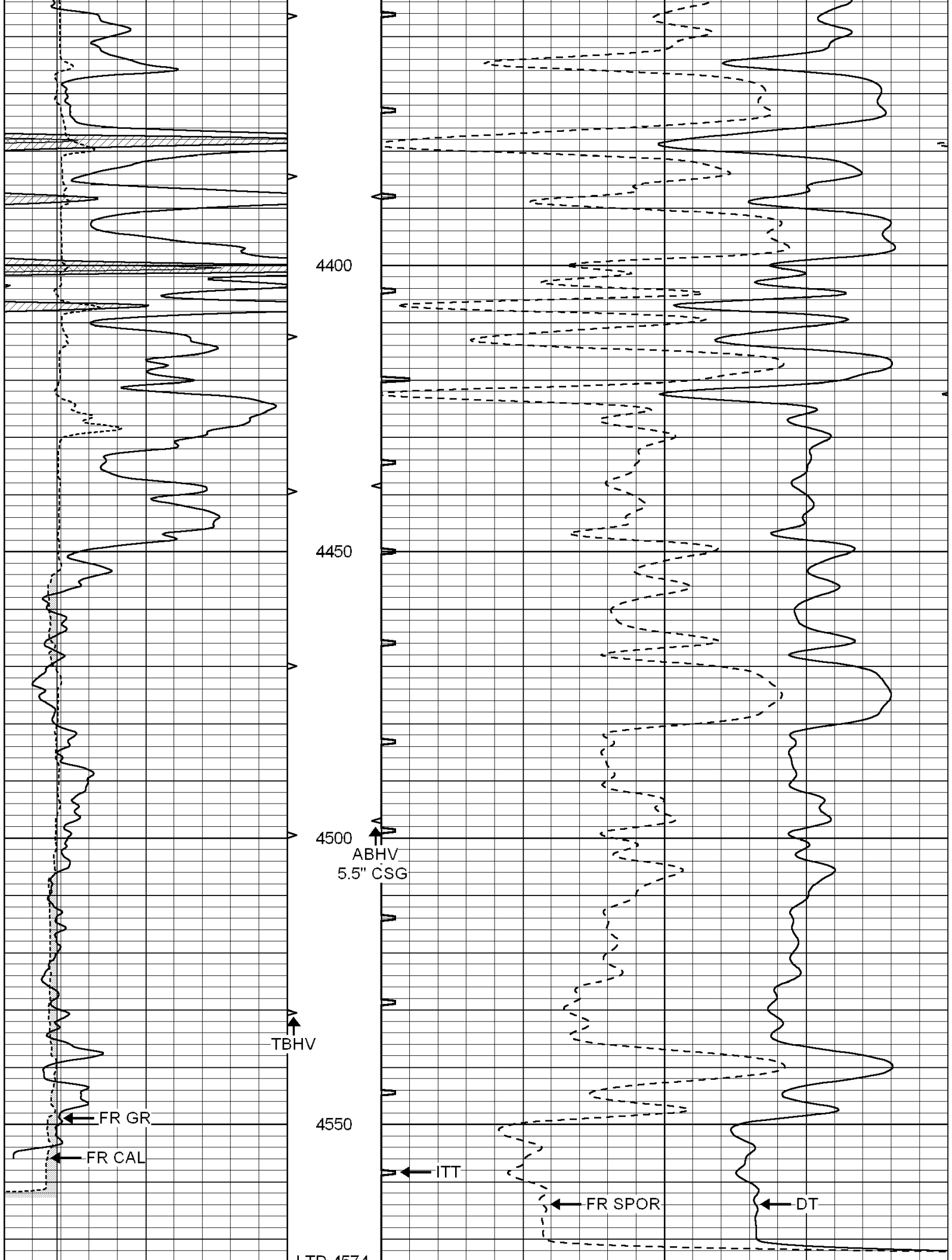












LTD 4574

0	GAMMA RAY (GAPI)	150	ABHV	140	DELTA TIME (usec/ft)	40
6	CALIPER (in)	16	10 (ft3) 0	30	SONIC POROSITY (pu)	-10
			TBHV	0	ITT (msec)	20
			0 (ft3) 10			



SUPERIOR
Hays,
Kansas

REPEAT SECTION

Database File: 005106ddn.db
 Dataset Pathname: pass5.1
 Presentation Format: _slt
 Dataset Creation: Sat Mar 27 23:28:59 2010 by Calc Open-Cased 090629
 Charted by: Depth in Feet scaled 1:240

0	GAMMA RAY (GAPI)	150	ABHV	140	DELTA TIME (usec/ft)	40
6	CALIPER (in)	16	10 (ft3) 0	30	SONIC POROSITY (pu)	-10
			TBHV	0	ITT (msec)	20
			0 (ft3) 10			

