



SUPERIOR
Hays,
Kansas

**DUAL INDUCTION
LOG**

Company: VINCENT OIL CORPORATION
Well: BASSETT #1-5
Field: HARMONY
County: GRAHAM
State: KANSAS

Company: VINCENT OIL CORPORATION
Well: BASSETT #1-5
Field: HARMONY
County: GRAHAM
State: KANSAS

Location: 1159' FNL & 2235' FWL
API #: 15-065-23624-0000
SEC 5 TWP 8S RGE 22W
Permanent Datum: GROUND LEVEL Elevation: 2125
Log Measured From: KELLY BUSHING 5' A.G.L.
Drilling Measured From: KELLY BUSHING
Other Services: CDL/CNL/PE MEL/SONIC
Elevation: K.B. 2130, D.F. 2128, G.L. 2125

Date	3/10/10
Run Number	ONE
Depth Driller	3620
Depth Logger	3618
Bottom Logged Interval	3616
Top Log Interval	00
Casing Driller	8 5/8" @ 260'
Casing Logger	260
Bit Size	7 7/8"
Type Fluid In Hole	CHEMICAL MUD
Density / Viscosity	9.0/56
pH / Fluid Loss	10.5/6.2
Source of Sample	FLOWLINE
Rm @ Meas. Temp	1.00 @ 74F
Rmf @ Meas. Temp	.750 @ 74F
Rmc @ Meas. Temp	1.20 @ 74F
Source of Rmf / Rmc	MEASUREMENT
Rm @ BHT	.655 @ 113F
Time Circulation Stopped	2 HOURS
Time Logger on Bottom	5:15 P.M.
Maximum Recorded Temperature	113F
Equipment Number	0836
Location	HAYS, KANSAS
Recorded By	JEFF LUEBBERS
Witnessed By	JIM HALL

<<< Fold Here >>>

All interpretations are opinions based on inferences from electrical or other measurements and we cannot and do not guarantee the accuracy or correctness of any interpretation, and we shall not, except in the case of gross or willful negligence on our part, be liable or responsible for any loss, costs, damages, or expenses incurred or sustained by anyone resulting from any interpretation made by any of our officers, agents or employees. These interpretations are also subject to our general terms and conditions set out in our current Price Schedule.

Comments

THANK YOU FOR USING SUPERIOR WELL SERVICE HAYS, KANSAS (785) 628-6395
DIRECTIONS
HILL CITY, KS. (4 WAY STOP) 1 1/2N. ON HWY 283 TO "RD. S" (SPLITS CEMETARY) 2 1/4E., S. INTO



SUPERIOR
Hays,
Kansas

MAIN SECTION

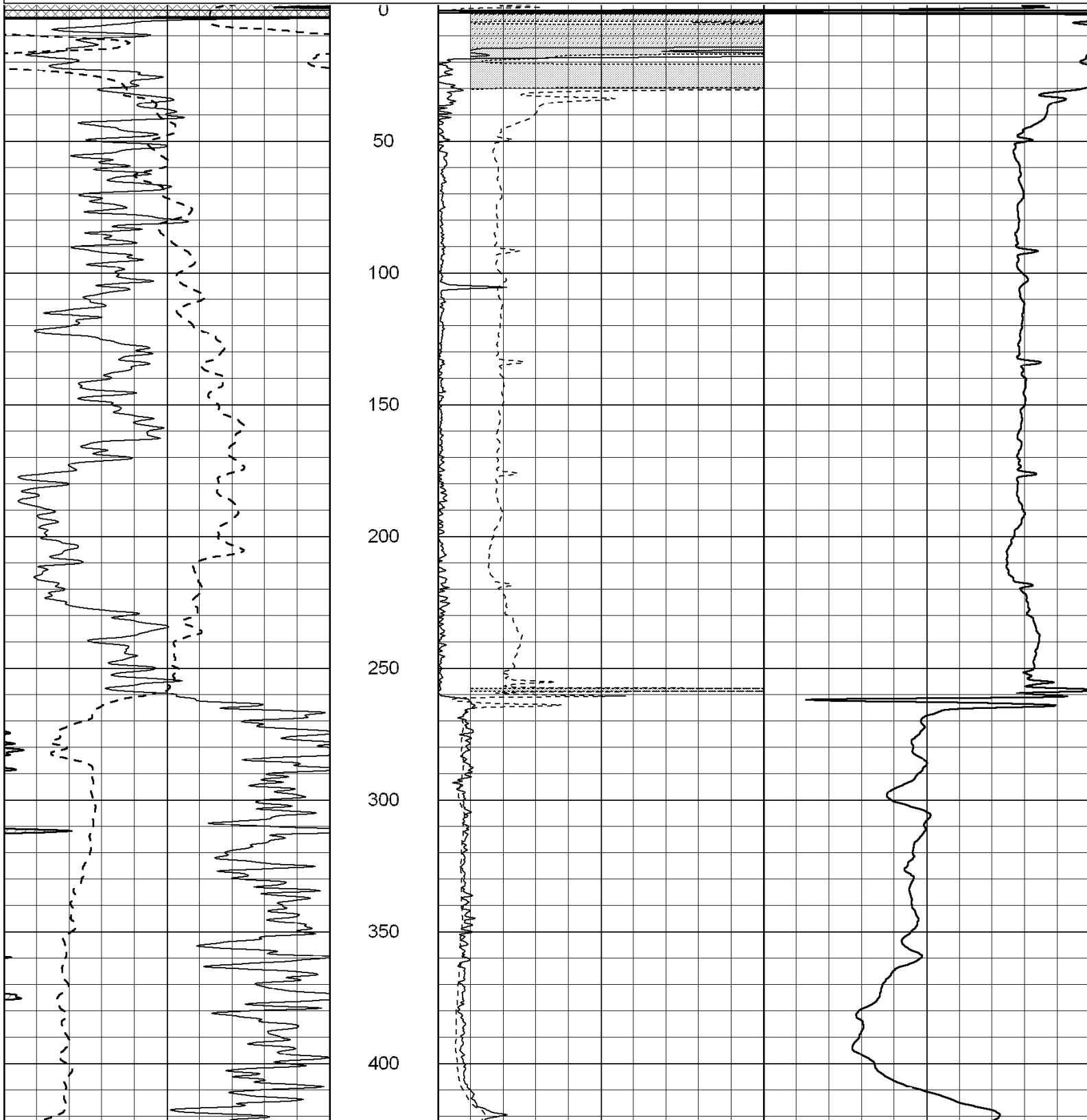
Database File: 004833pe.db
 Dataset Pathname: pass3.5
 Presentation Format: dil2
 Dataset Creation: Wed Mar 10 18:17:58 2010 by Calc Open-Cased 060407
 Charted by: Depth in Feet scaled 1:600

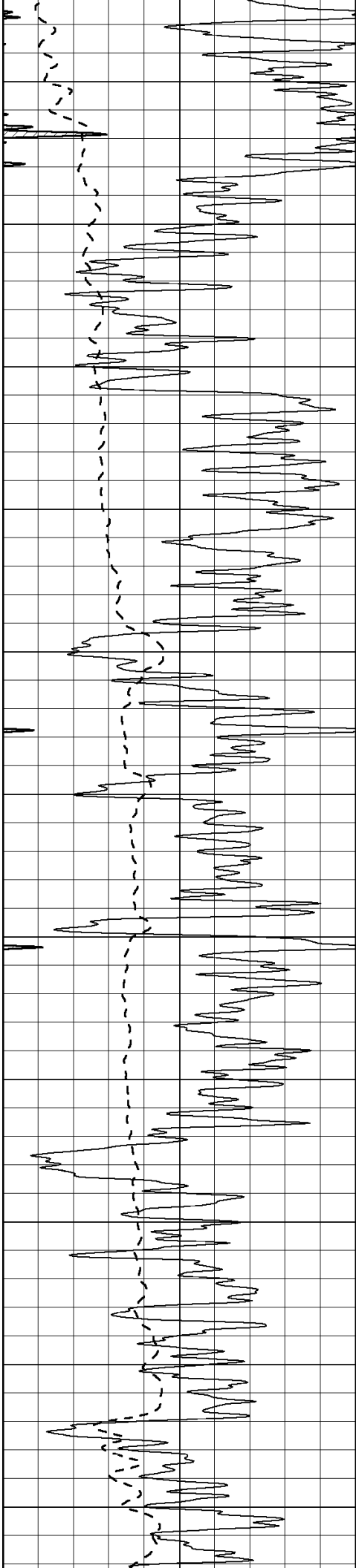
0	Gamma Ray (GAPI)	150
-100	SP (mV)	100

0	RLL3 (Ohm-m)	50
0	RILD (Ohm-m)	50

1000	CILD (mmho-m)	0
------	---------------	---

50	RILD X10 (Ohm-m)	500
50	RLL3 X10 (Ohm-m)	500





450

500

550

600

650

700

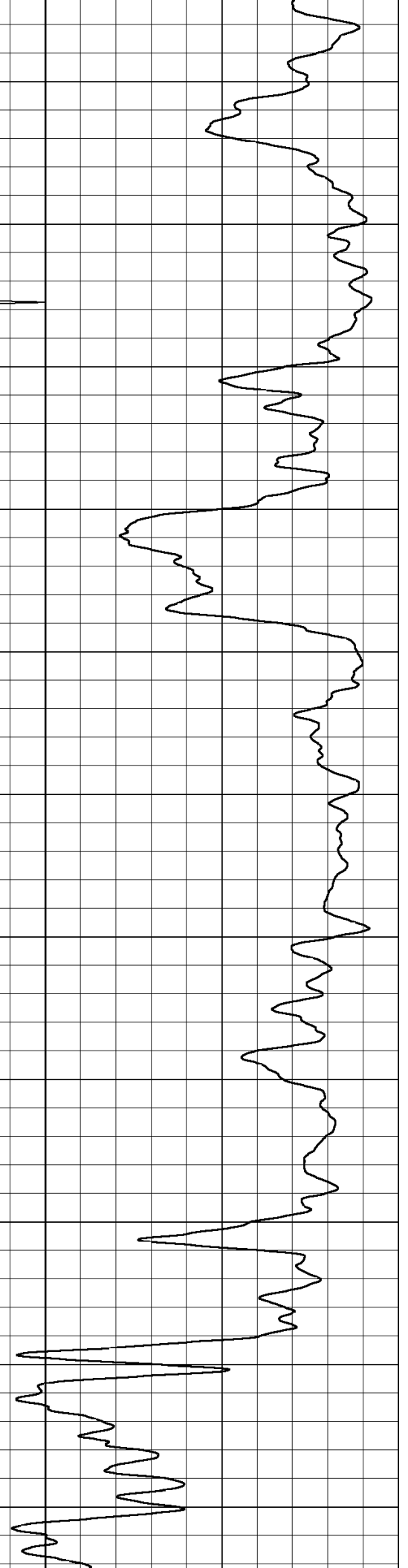
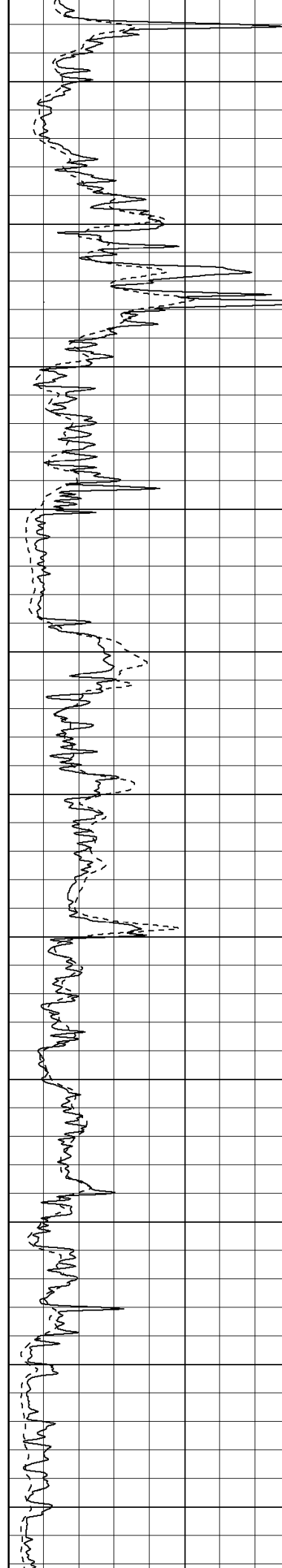
750

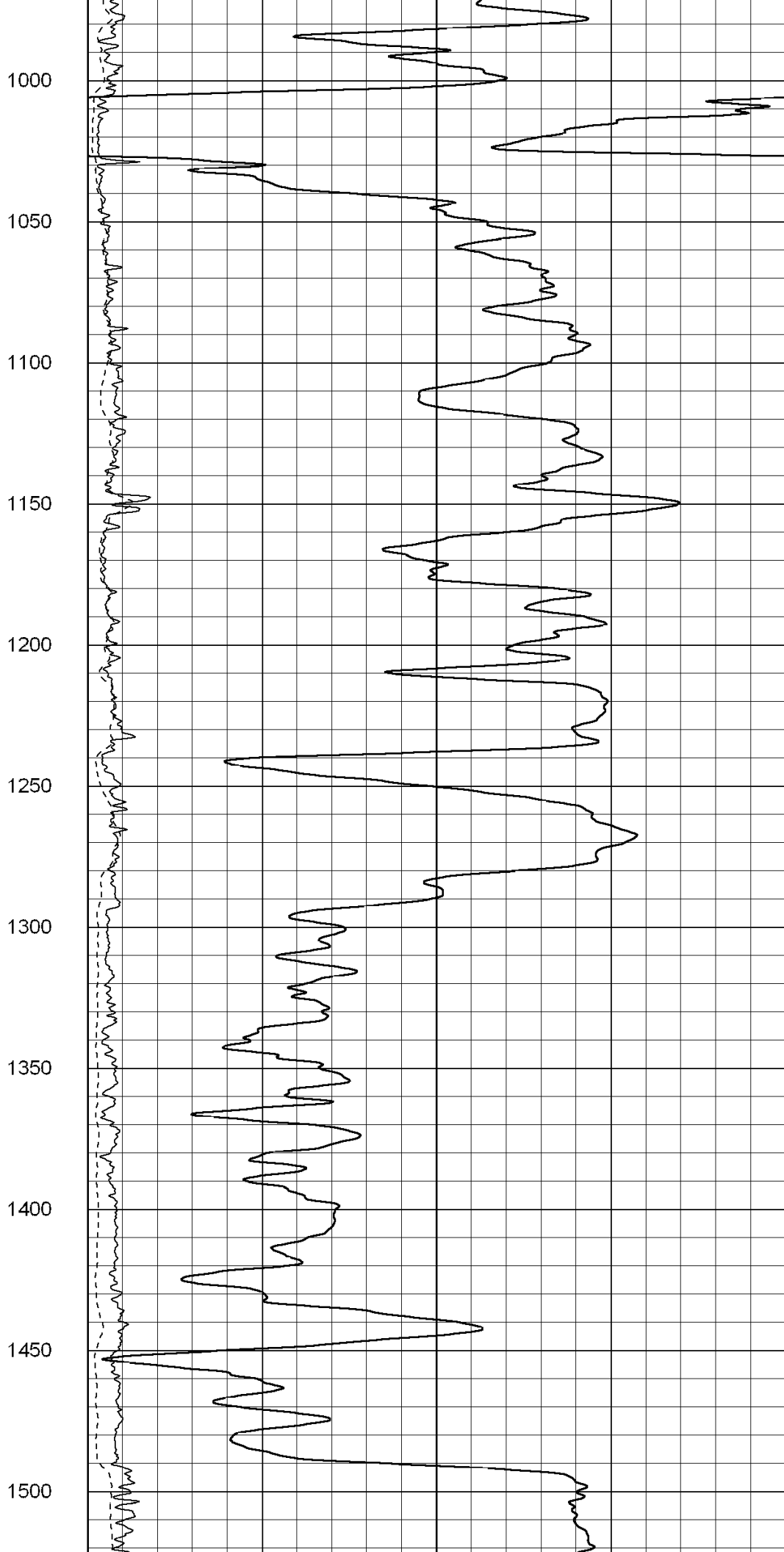
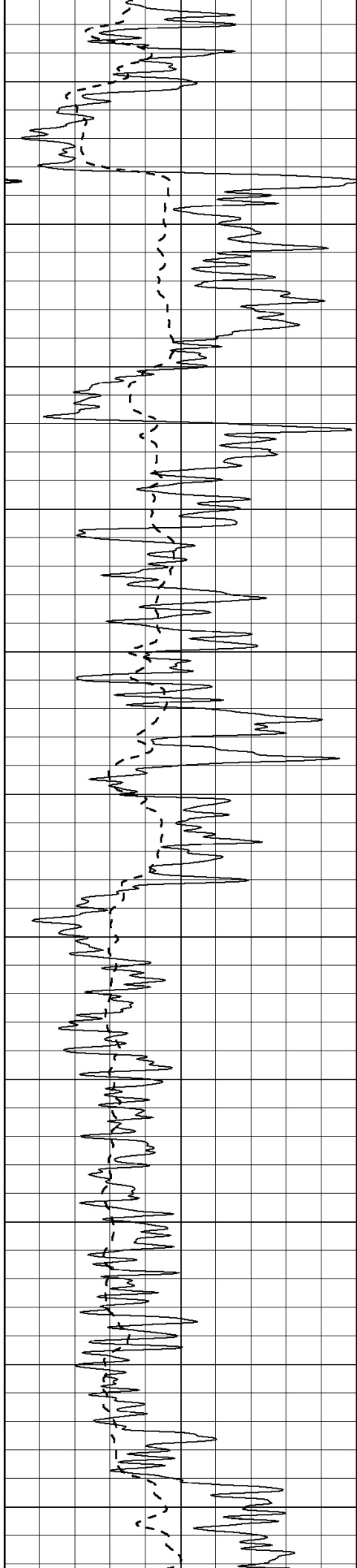
800

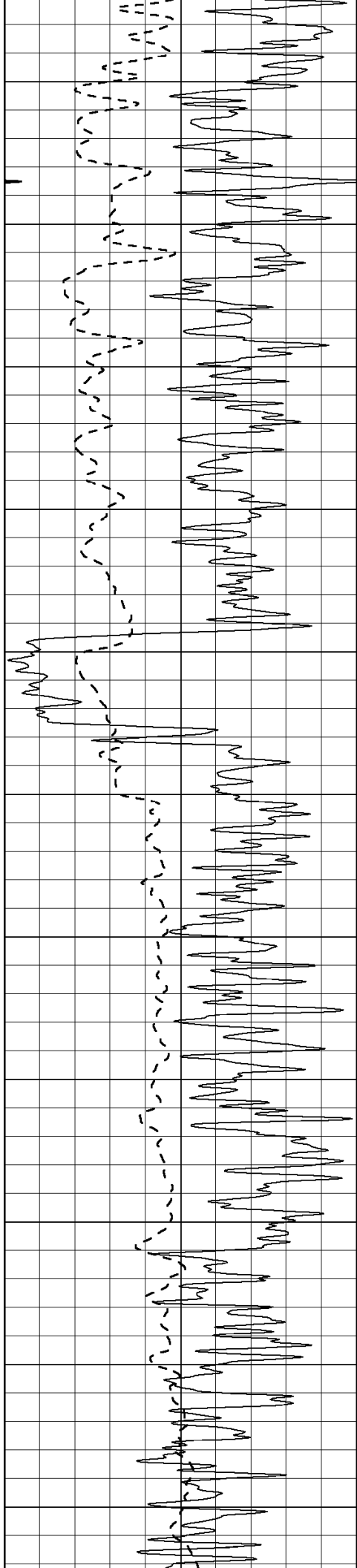
850

900

950







1550

1600

1650

1700

1750

1800

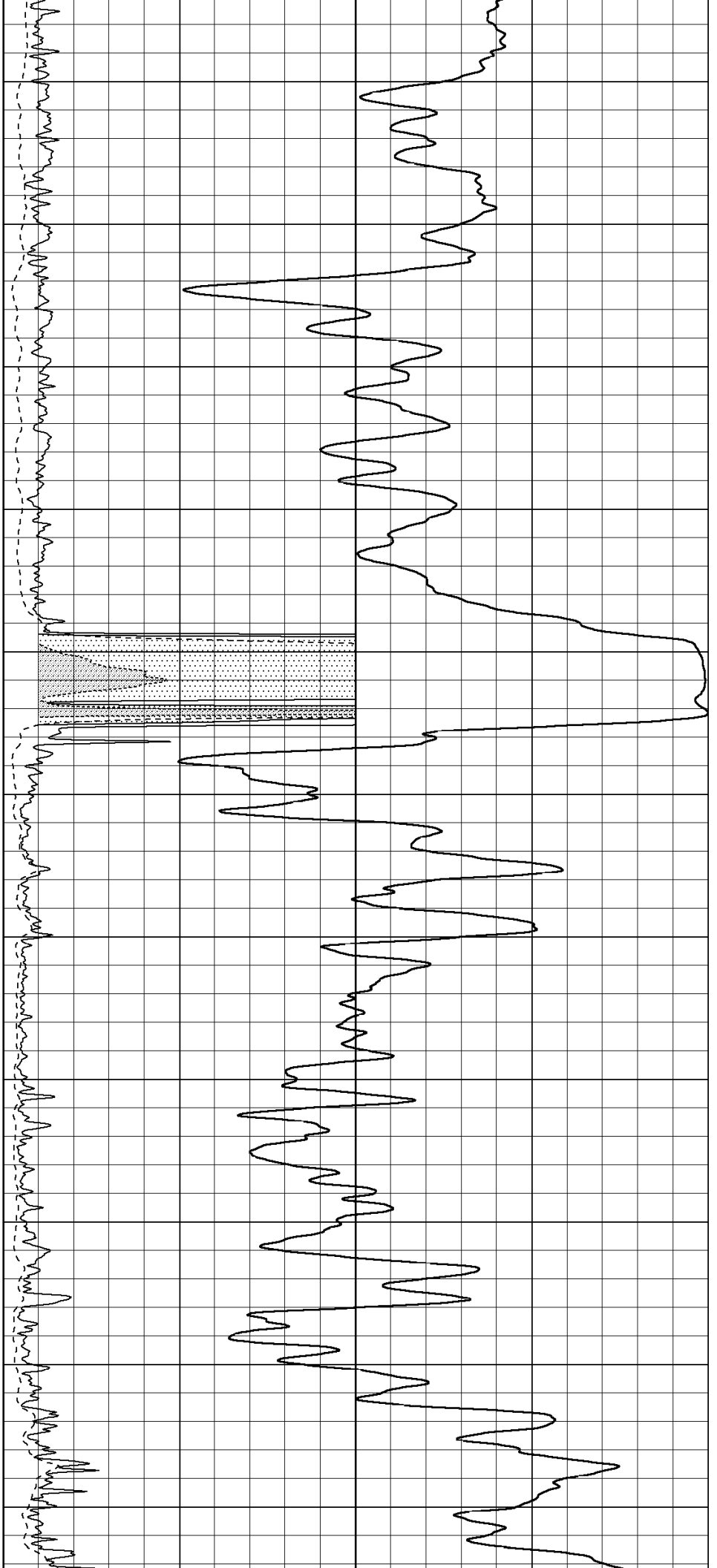
1850

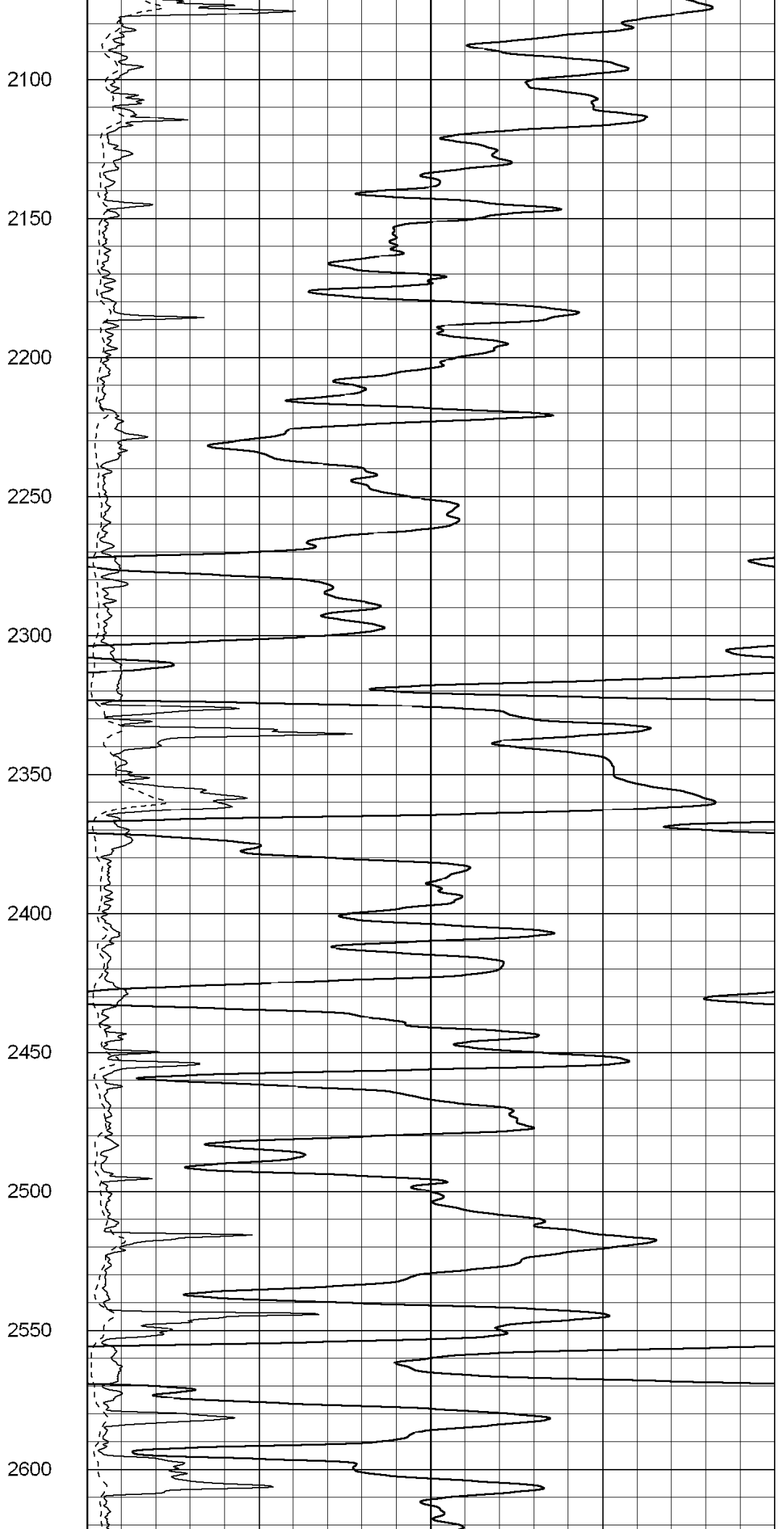
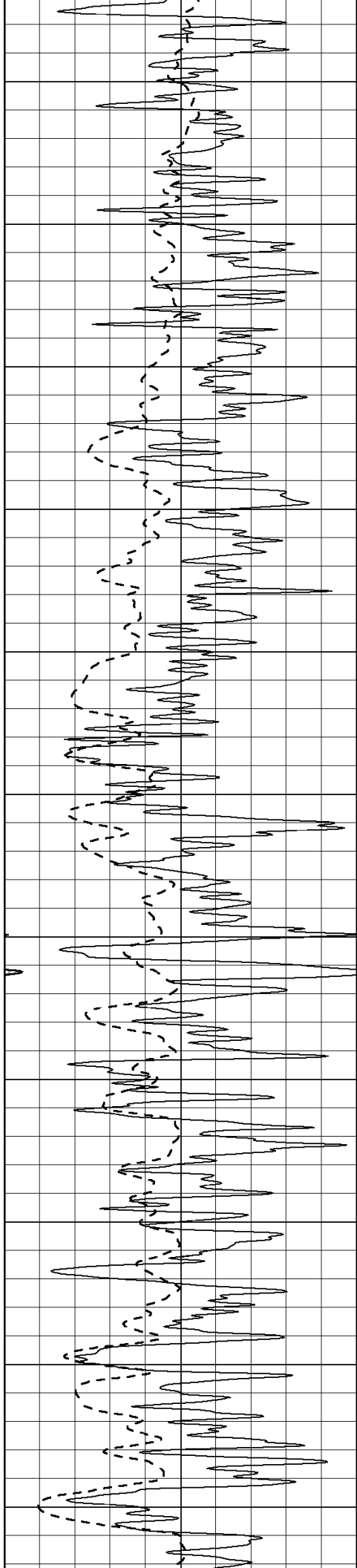
1900

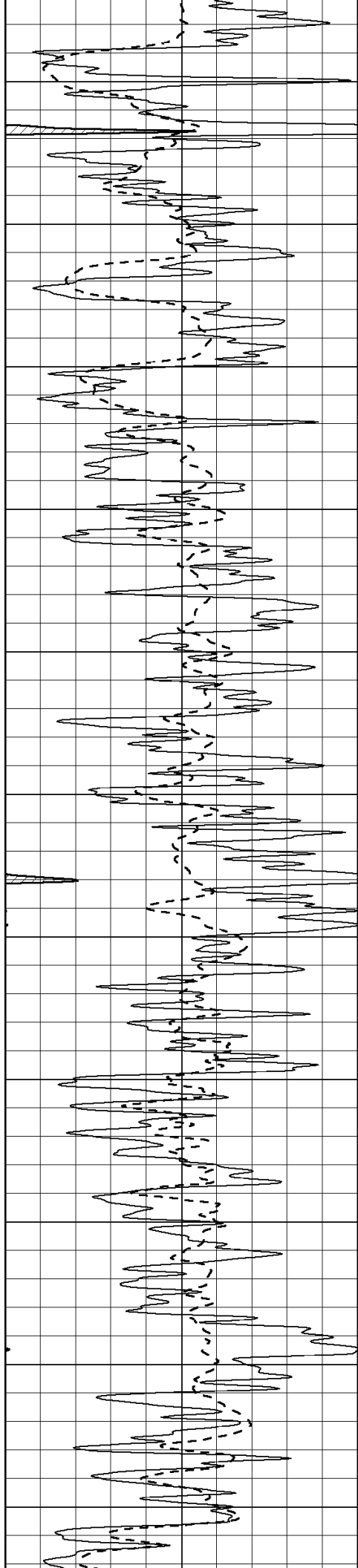
1950

2000

2050







2650

2700

2750

2800

2850

2900

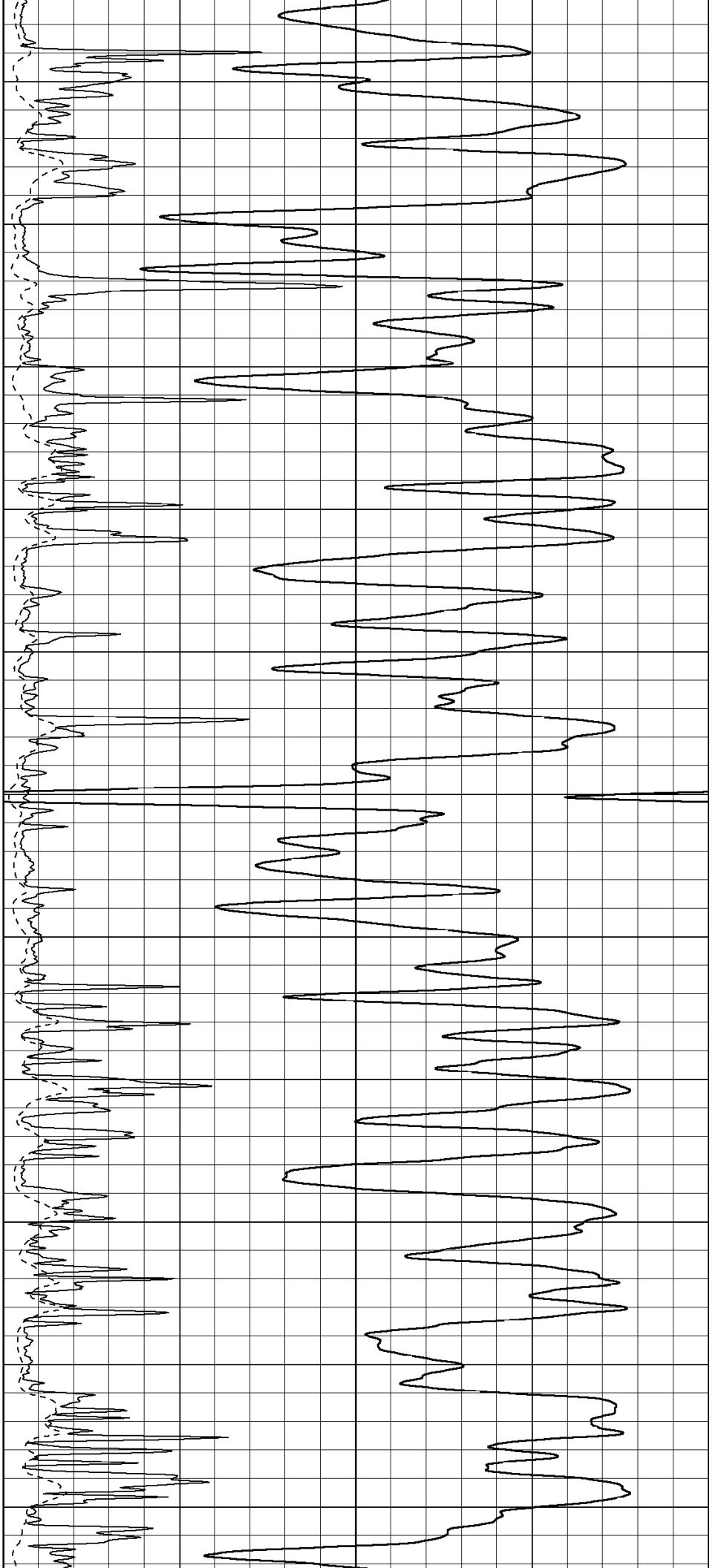
2950

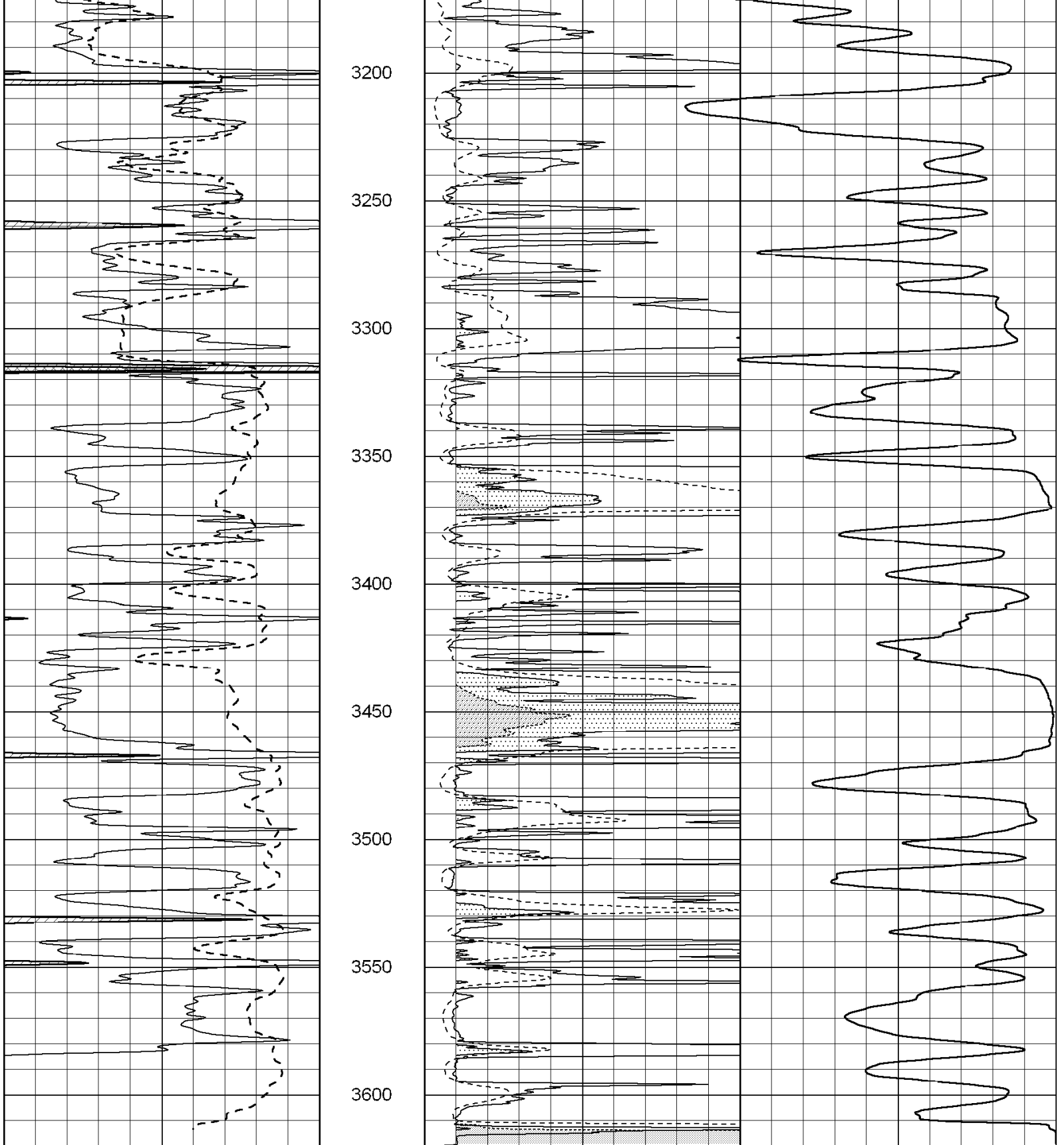
3000

3050

3100

3150





0	Gamma Ray (GAPI)	150
-100	SP (mV)	100

0	RLL3 (Ohm-m)	50
0	RILD (Ohm-m)	50
1000	CILD (mmho-m)	0
50	RILD X10 (Ohm-m)	500
50	RLL3 X10 (Ohm-m)	500



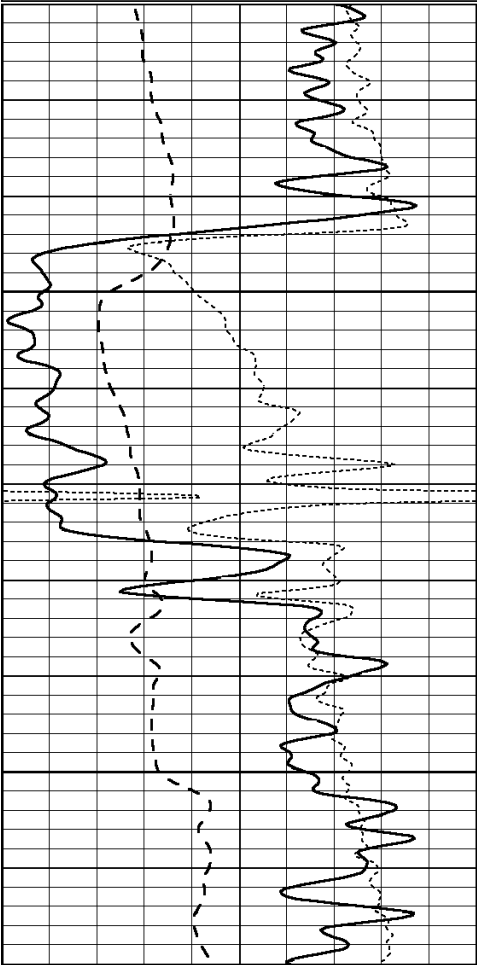
Hays, Kansas

ANHYDRITE

Database File: 004833pe.db
 Dataset Pathname: pass3.6
 Presentation Format: dil
 Dataset Creation: Wed Mar 10 18:18:53 2010 by Calc Open-Cased 060407
 Charted by: Depth in Feet scaled 1:240

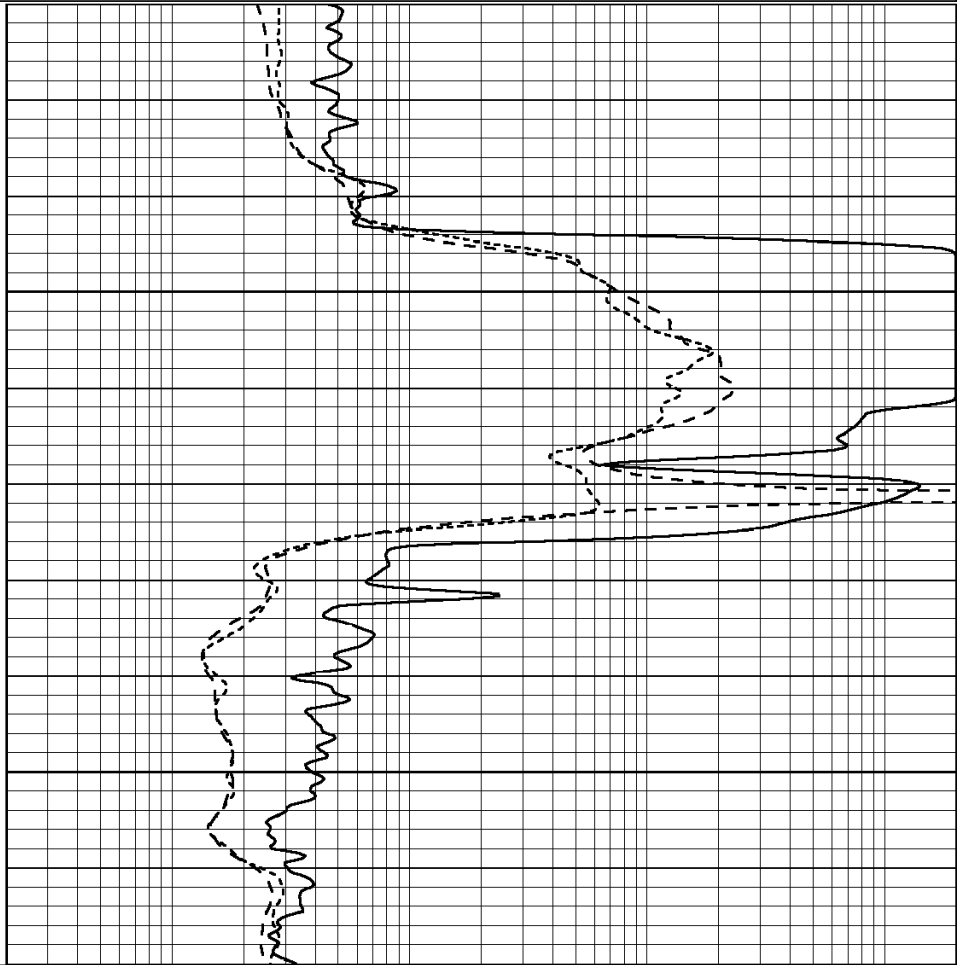
0	GAMMA RAY (GAPI)	150
-100	SP (mV)	100
-250	Rxo/Rt	50

0.2	SHALLOW GUARD (Ohm-m)	2000
0.2	DEEP INDUCTION (Ohm-m)	2000
0.2	MEDIUM INDUCTION (Ohm-m)	2000



1750

1800



0	GAMMA RAY (GAPI)	150
-100	SP (mV)	100
-250	Rxo/Rt	50

0.2	SHALLOW GUARD (Ohm-m)	2000
0.2	DEEP INDUCTION (Ohm-m)	2000
0.2	MEDIUM INDUCTION (Ohm-m)	2000



SUPERIOR
Hays, Kansas

MAIN SECTION

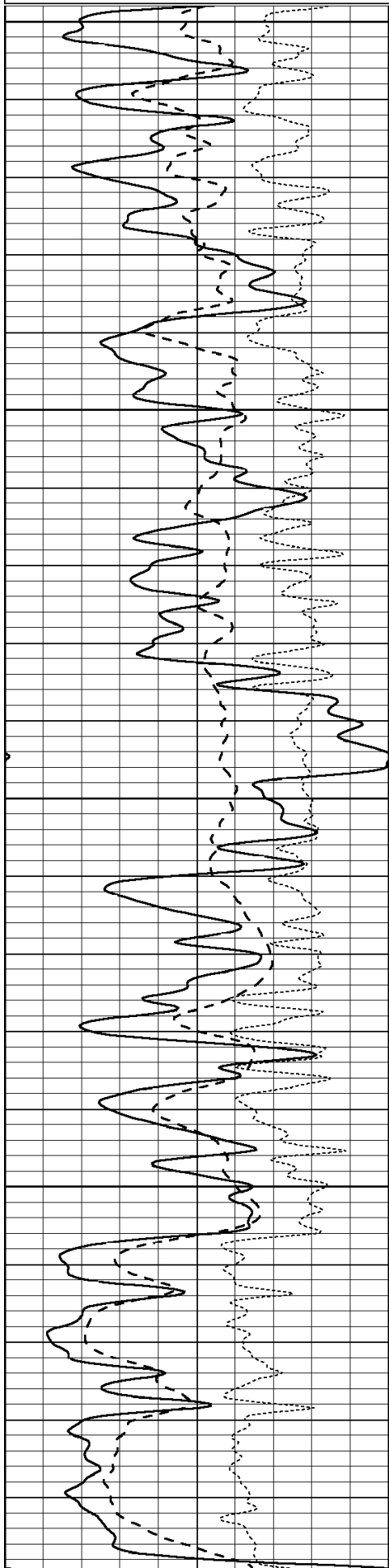
Database File: 004833pe.db
 Dataset Pathname: pass3.5
 Presentation Format: dil
 Dataset Creation: Wed Mar 10 18:17:58 2010 by Calc Open-Cased 060407
 Charted by: Depth in Feet scaled 1:240

0	GAMMA RAY (GAPI)	150
---	------------------	-----

0.2	SHALLOW GUARD (Ohm-m)	2000
-----	-----------------------	------

0	GAMMA RAY (GAPI)	150
-100	SP (mV)	100
-250	Rxo/Rt	50

0.2	SHALLOW GUARD (Ohm-m)	2000
0.2	DEEP INDUCTION (Ohm-m)	2000
0.2	MEDIUM INDUCTION (Ohm-m)	2000



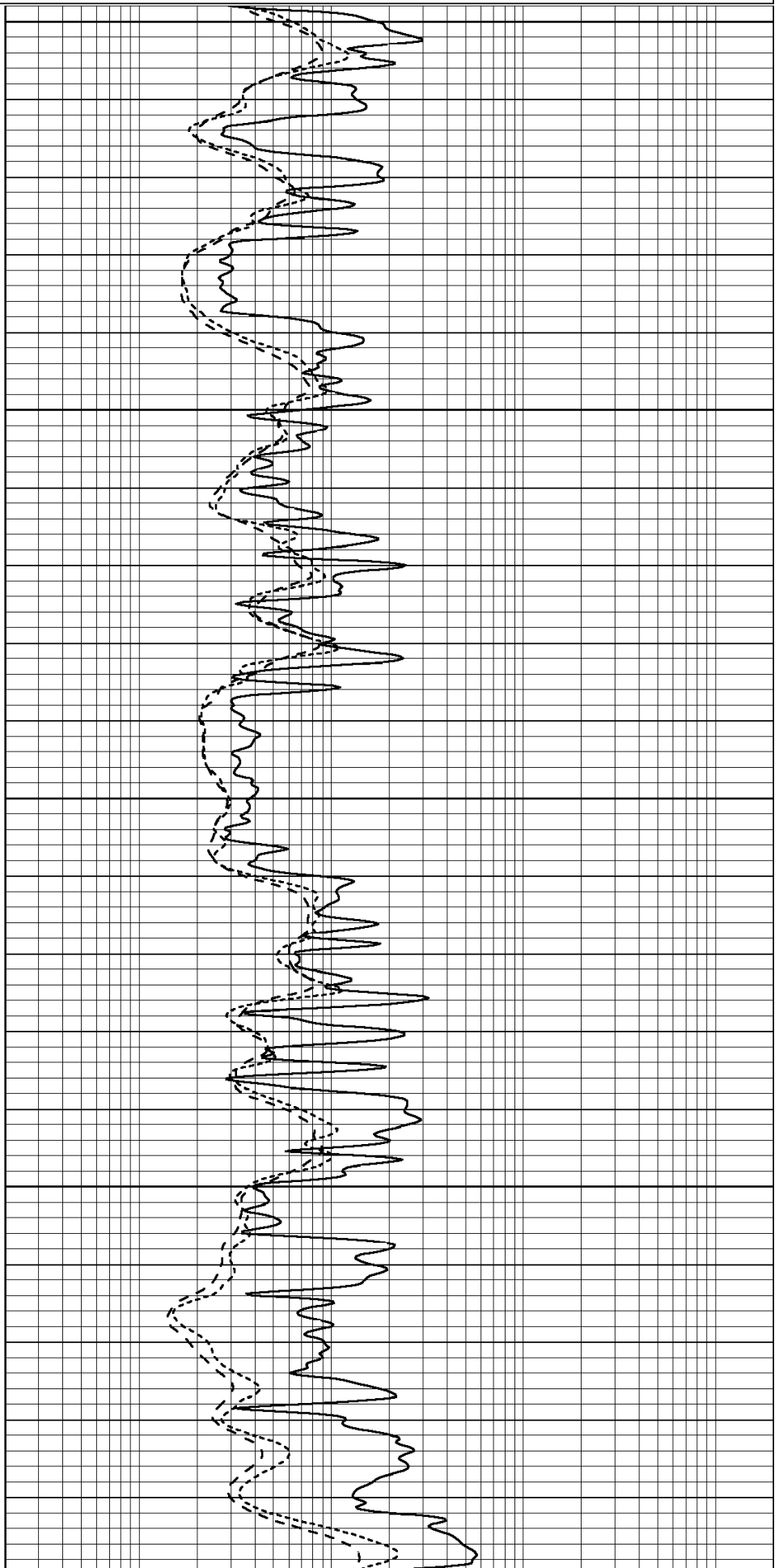
3000

3050

3100

3150

3200



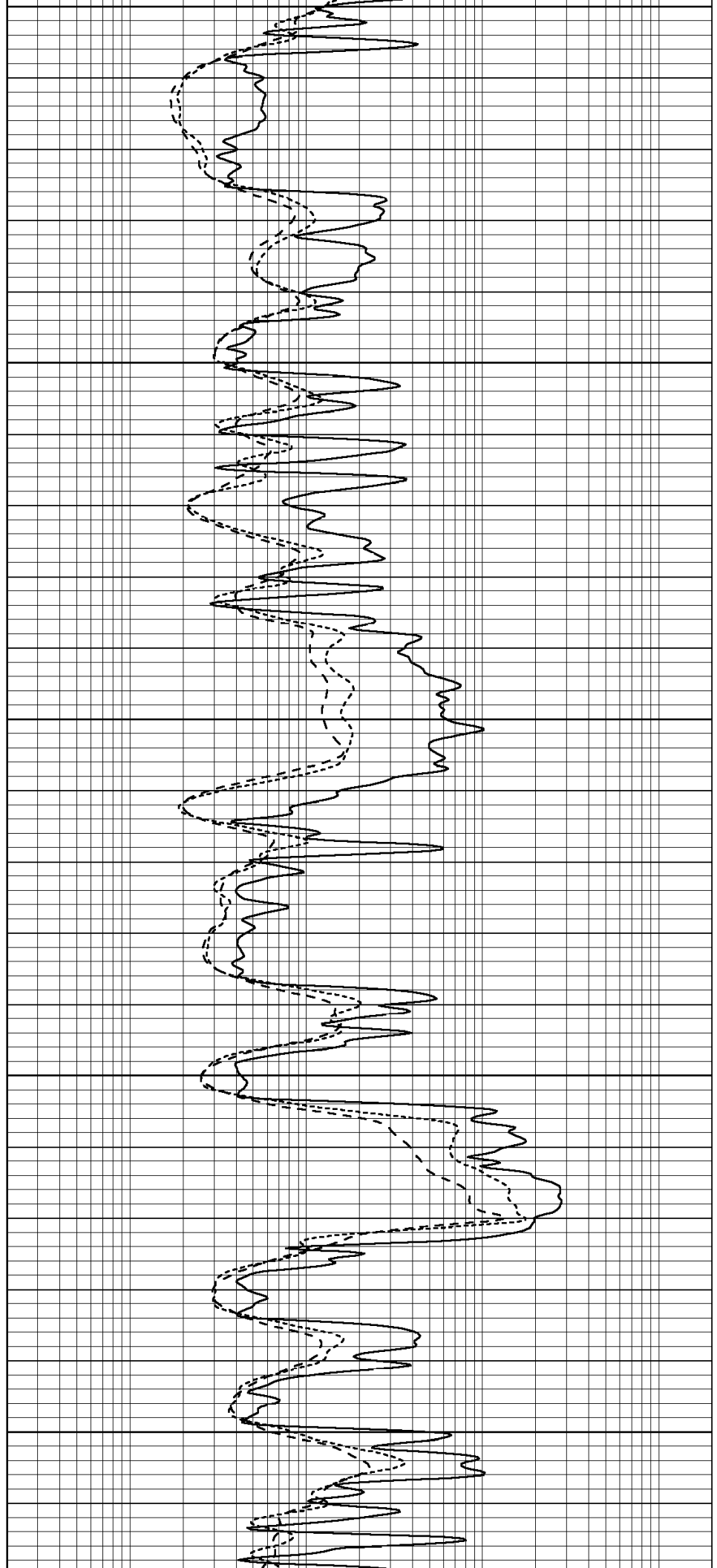
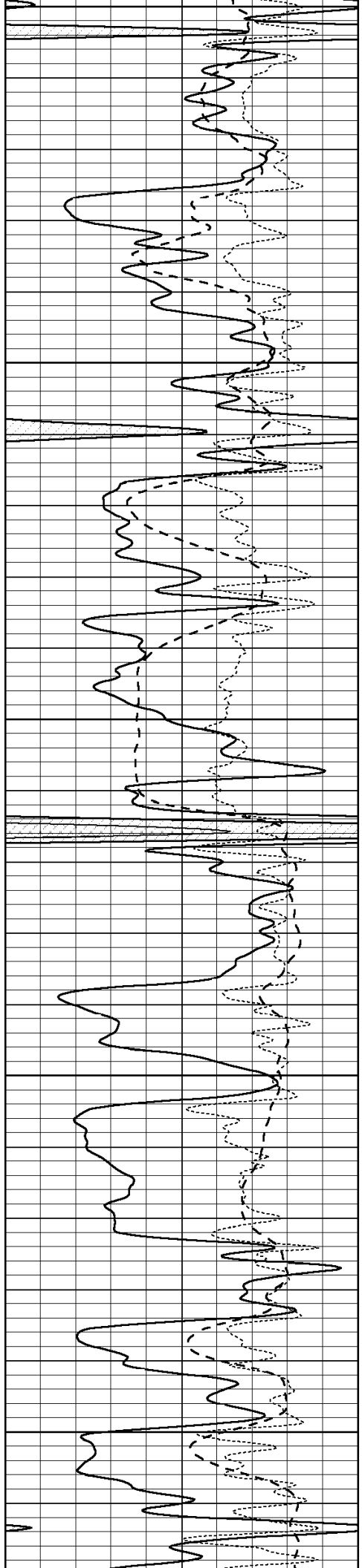
3200

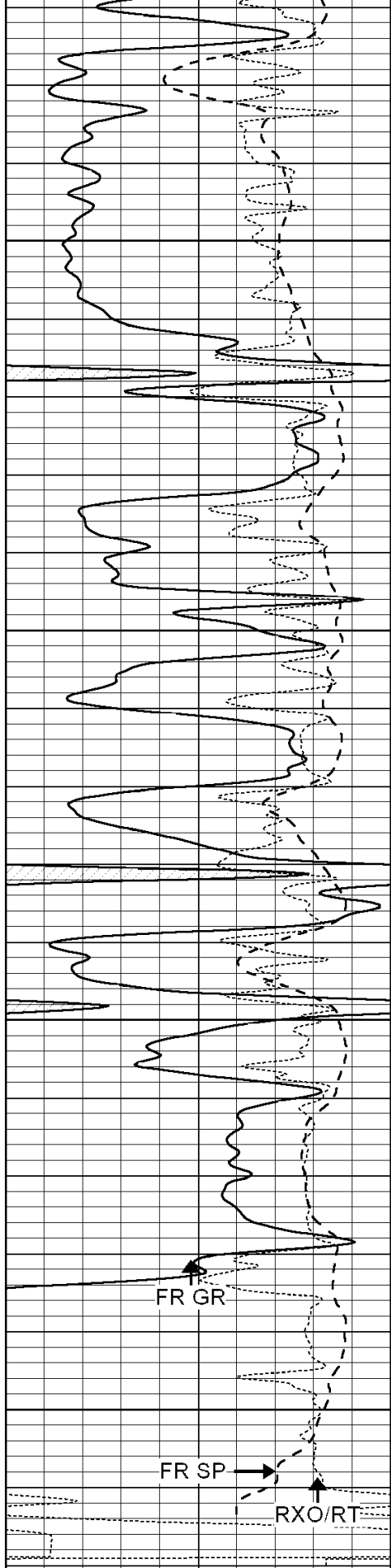
3250

3300

3350

3400





3450

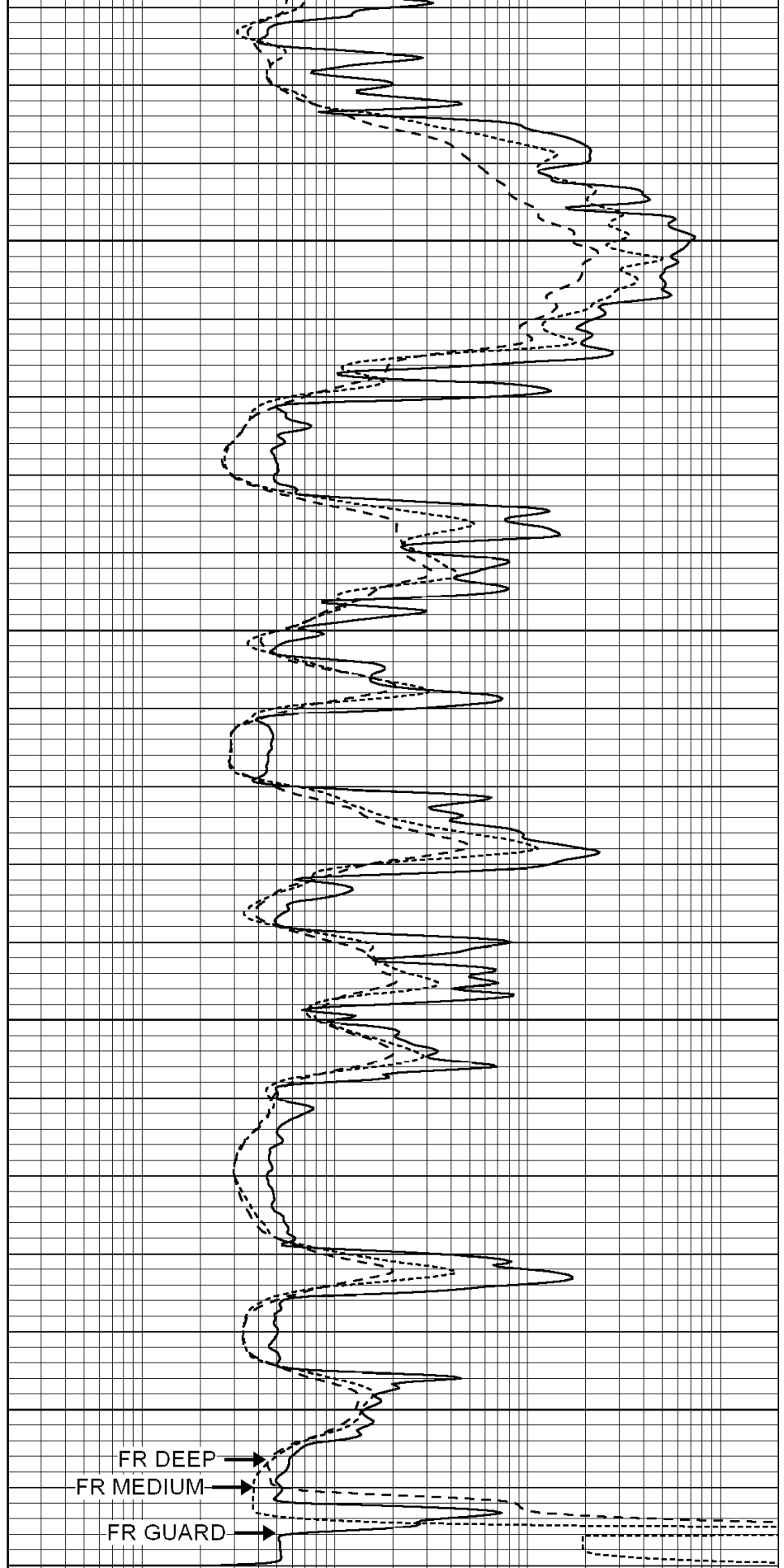
3500

3550

3600

LTD 3618

0	GAMMA RAY (GAPI)	150
-100	SP (mV)	100
-250	Rxo/Rt	50



0.2	SHALLOW GUARD (Ohm-m)	2000
0.2	DEEP INDUCTION (Ohm-m)	2000
0.2	MEDIUM INDUCTION (Ohm-m)	2000



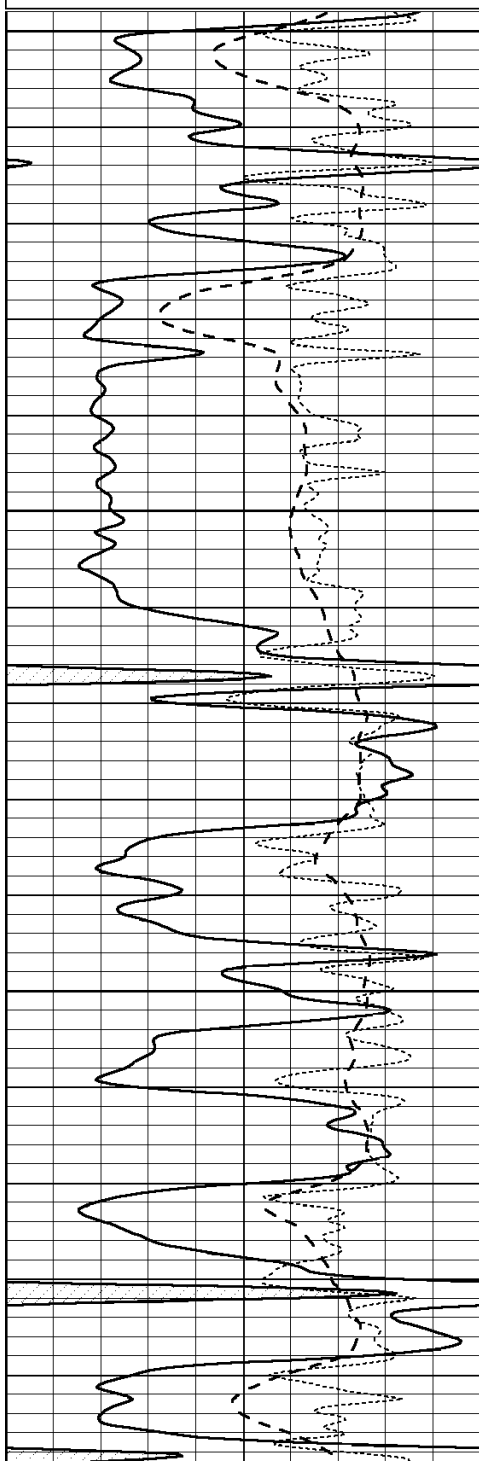
SUPERIOR
Hays,
Kansas

REPEAT SECTION

Database File: 004833pe.db
 Dataset Pathname: pass2.5
 Presentation Format: dil
 Dataset Creation: Wed Mar 10 17:39:43 2010
 Charted by: Depth in Feet scaled 1:240

0	GAMMA RAY (GAPI)	150
-100	SP (mV)	100
-250	Rxo/Rt	50

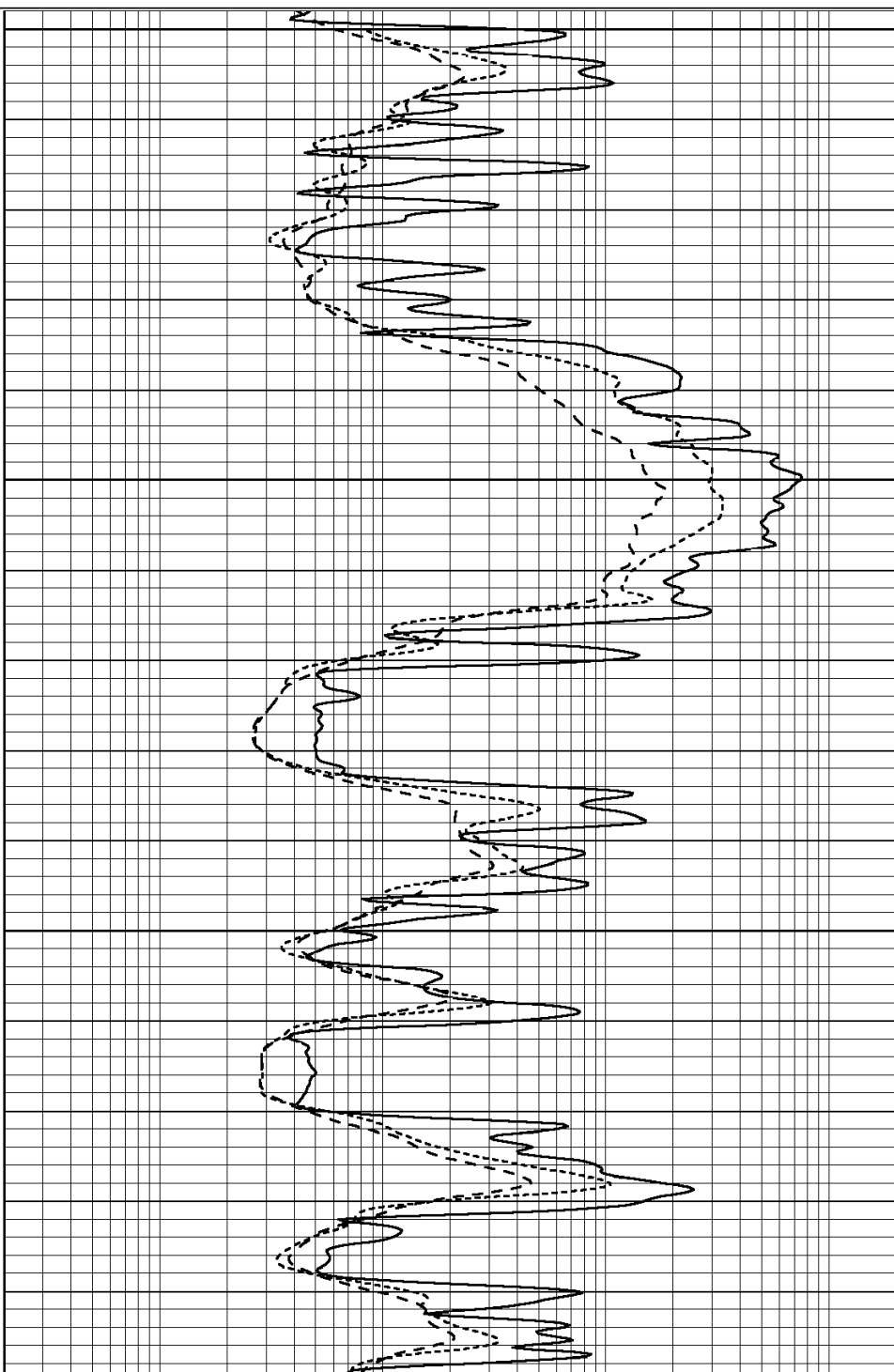
0.2	SHALLOW GUARD (Ohm-m)	2000
0.2	DEEP INDUCTION (Ohm-m)	2000
0.2	MEDIUM INDUCTION (Ohm-m)	2000

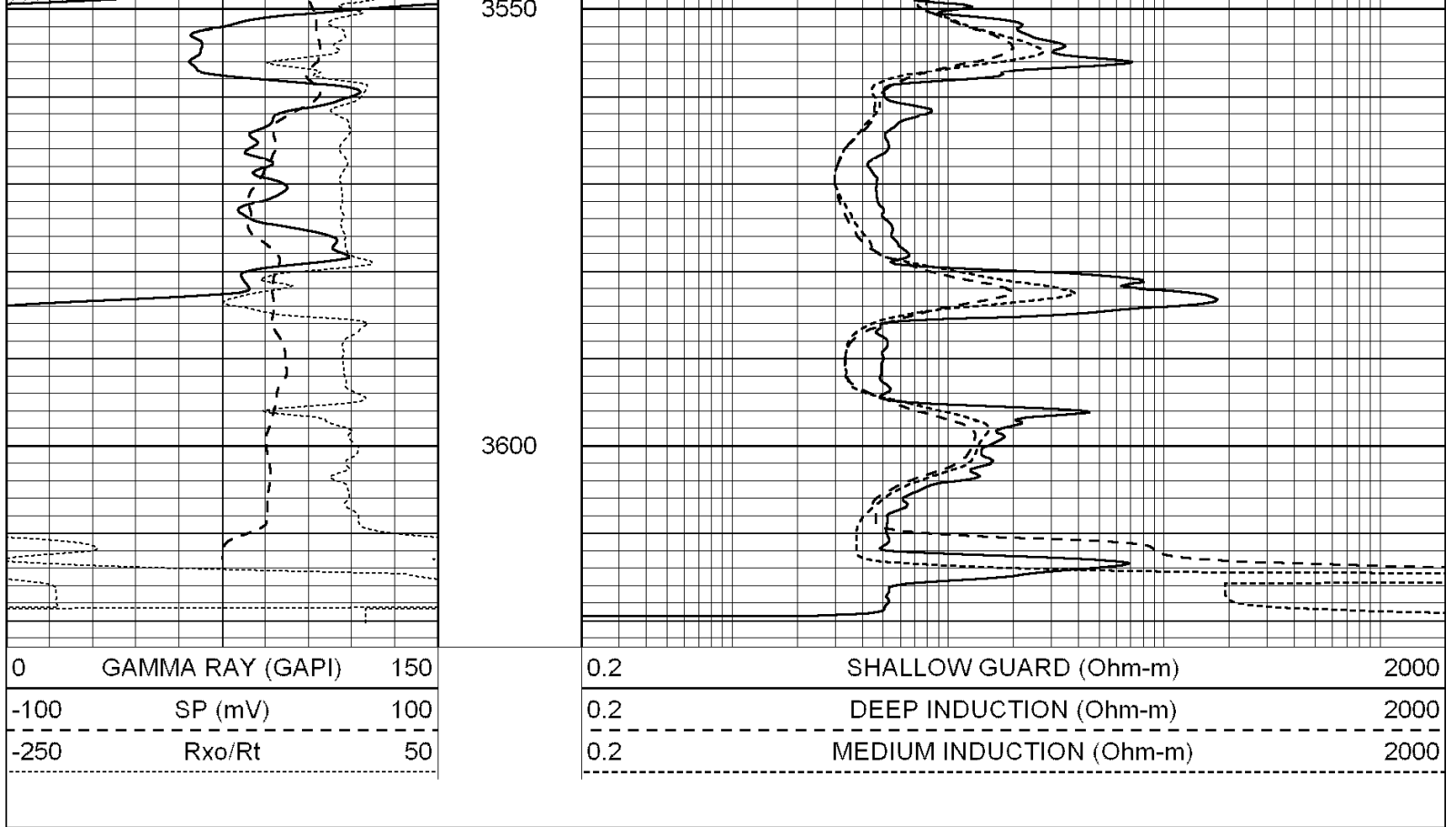


3400

3450

3500





Calibration Report

Database File: 004833pe.db
 Dataset Pathname: pass3.5
 Dataset Creation: Wed Mar 10 18:17:58 2010 by Calc Open-Cased 060407

Dual Induction Calibration Report

Serial-Model: DIL3-GEAR
 Performed: Wed Mar 10 17:22:01 2010

Loop:	Readings				References			Results	
	Air	Loop			Air	Loop		m	b
Deep	0.011	0.656	V	0.000	400.000	mmho-m	640.000	0.000	
Medium	0.013	0.740	V	0.000	462.500	mmho-m	700.000	-11.000	
Internal:	Zero	Cal		Zero	Cal		m	b	
Deep	0.002	0.645	V	0.000	400.000	mmho-m	622.059	-1.071	
Medium	0.007	0.740	V	0.000	462.500	mmho-m	631.393	-4.555	

Litho Density Calibration Report

Serial: 003N Model: PRB
 Performed Tue Sep 08 14:14:44 2009

Litho Density Calibration

	Background	Magnesium	Aluminum	Sandstone	
Window 1	2042.6	12312.8	4225.8	13758.4	cps
Window 2	1855.8	10134.7	3624.2	11113.1	cps
Window 3	1639.4	6760.2	2716.3	7260.3	cps
Window 4	466.4	469.2	466.1	476.5	cps
Long Space	0.0	8278.9	1768.4	9257.4	cps
Short Space	2.2	2377.3	1544.1	2574.2	cps
Rho		1.7100	2.5900	1.3800	q/cc

Pe			2.5700		1.5500
Rib Angle	: 44.4	Rib Slope	: 0.979	Density/Spine Ratio	: 0.549
Spine Angle	: 74.4	Spine Slope	: 3.577	Spine Intercept	: -18.8

Caliper				
	Readings	Reference		
Low Ref	2.2	6.8		
High Ref	4.6	14.0		
	Gain: 3.0		Offset: 0.4	

Compensated Neutron Calibration Report

Serial Number:	NEU_3I
Tool Model:	G

CALIBRATION

Detector	Readings	Target	Normalization
Short Space	997.00 cps	1000.00 cps	1.0000
Long Space	986.00 cps	1000.00 cps	1.0000

Gamma Ray Calibration Report

Serial Number:	GR3
Tool Model:	OPEN
Performed:	Wed Mar 10 17:21:40 2010
Calibrator Value:	200.0 GAPI
Background Reading:	3.0 cps
Calibrator Reading:	186.0 cps
Sensitivity:	0.6500 GAPI/cps