



SUPERIOR
Hays,
Kansas

SONIC
LOG

Company: VINCENT OIL CORPORATION
Well: BASSETT #1-5
Field: HARMONY
County: GRAHAM
State: KANSAS

Company: VINCENT OIL CORPORATION
Well: BASSETT #1-5
Field: HARMONY
County: GRAHAM
State: KANSAS

Location: 1159' FNL & 2235' FWL
API #: 15-065-23624-0000
SEC 5 TWP 8S RGE 22W
Permanent Datum: GROUND LEVEL
Log Measured From: KELLY BUSHING 5' A.G.L.
Drilling Measured From: KELLY BUSHING
Elevation: 2125
Other Services: CDL/CNL/PE DIL/MEL
K.B. 2130
D.F. 2128
G.L. 2125

Date	3/10/10
Run Number	TWO
Depth Driller	3620
Depth Logger	3618
Bottom Logged Interval	3605
Top Log Interval	200
Casing Driller	8 5/8" @ 260'
Casing Logger	260
Bit Size	7 7/8"
Type Fluid In Hole	CHEMICAL MUD
Density / Viscosity	9.0/56
pH / Fluid Loss	10.5/6.2
Source of Sample	FLOWLINE
Rm @ Meas. Temp	1.00 @ 74F
Rmf @ Meas. Temp	.750 @ 74F
Rmc @ Meas. Temp	1.20 @ 74F
Source of Rmf / Rmc	MEASUREMENT
Rm @ BHT	.655 @ 113F
Time Circulation Stopped	3.5 HOURS
Time Logger on Bottom	5:15 P.M.
Maximum Recorded Temperature	113F
Equipment Number	0836
Location	HAYS, KANSAS
Recorded By	JEFF LUEBBERS
Witnessed By	JIM HALL

<<< Fold Here >>>

All interpretations are opinions based on inferences from electrical or other measurements and we cannot and do not guarantee the accuracy or correctness of any interpretation, and we shall not, except in the case of gross or willful negligence on our part, be liable or responsible for any loss, costs, damages, or expenses incurred or sustained by anyone resulting from any interpretation made by any of our officers, agents or employees. These interpretations are also subject to our general terms and conditions set out in our current Price Schedule.

Comments

THANK YOU FOR USING SUPERIOR WELL SERVICE HAYS, KANSAS (785) 628-6395
DIRECTIONS
HILL CITY, KS. (4 WAY STOP) 1 1/2N. ON HWY 283 TO "RD. S" (SPLITS CEMETARY) 2 1/4E., S. INTO

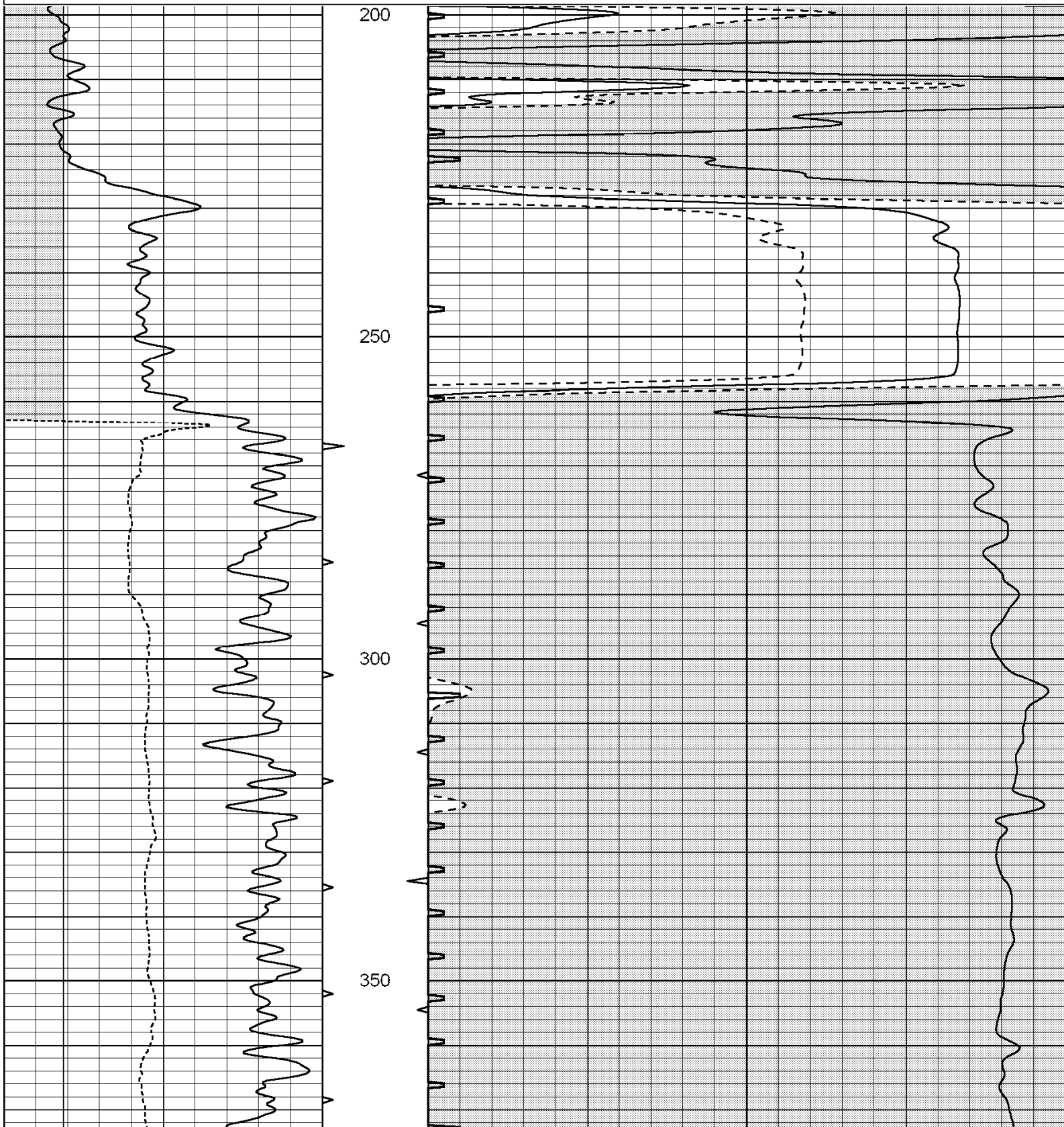


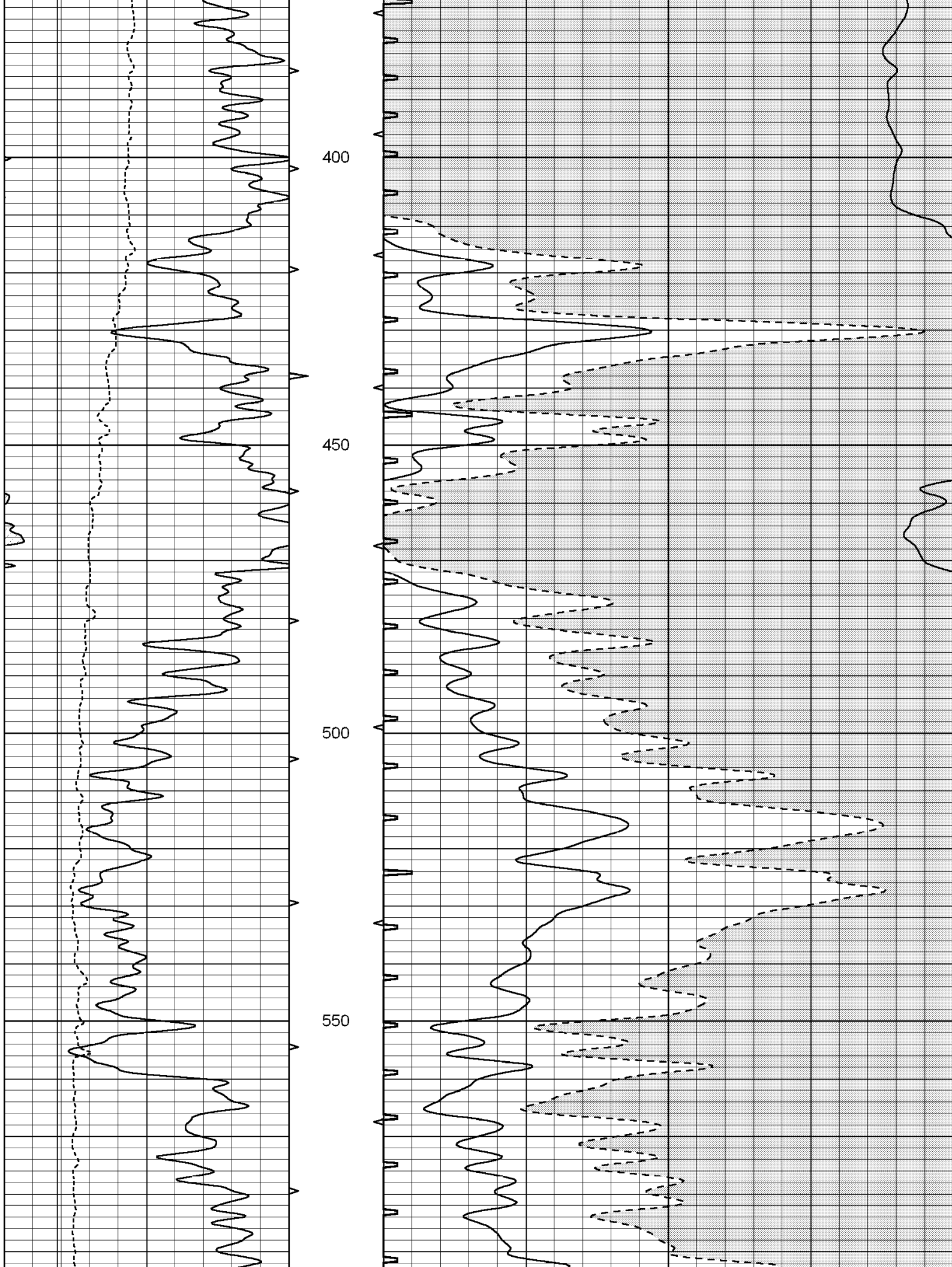
SUPERIOR
Hays,
Kansas

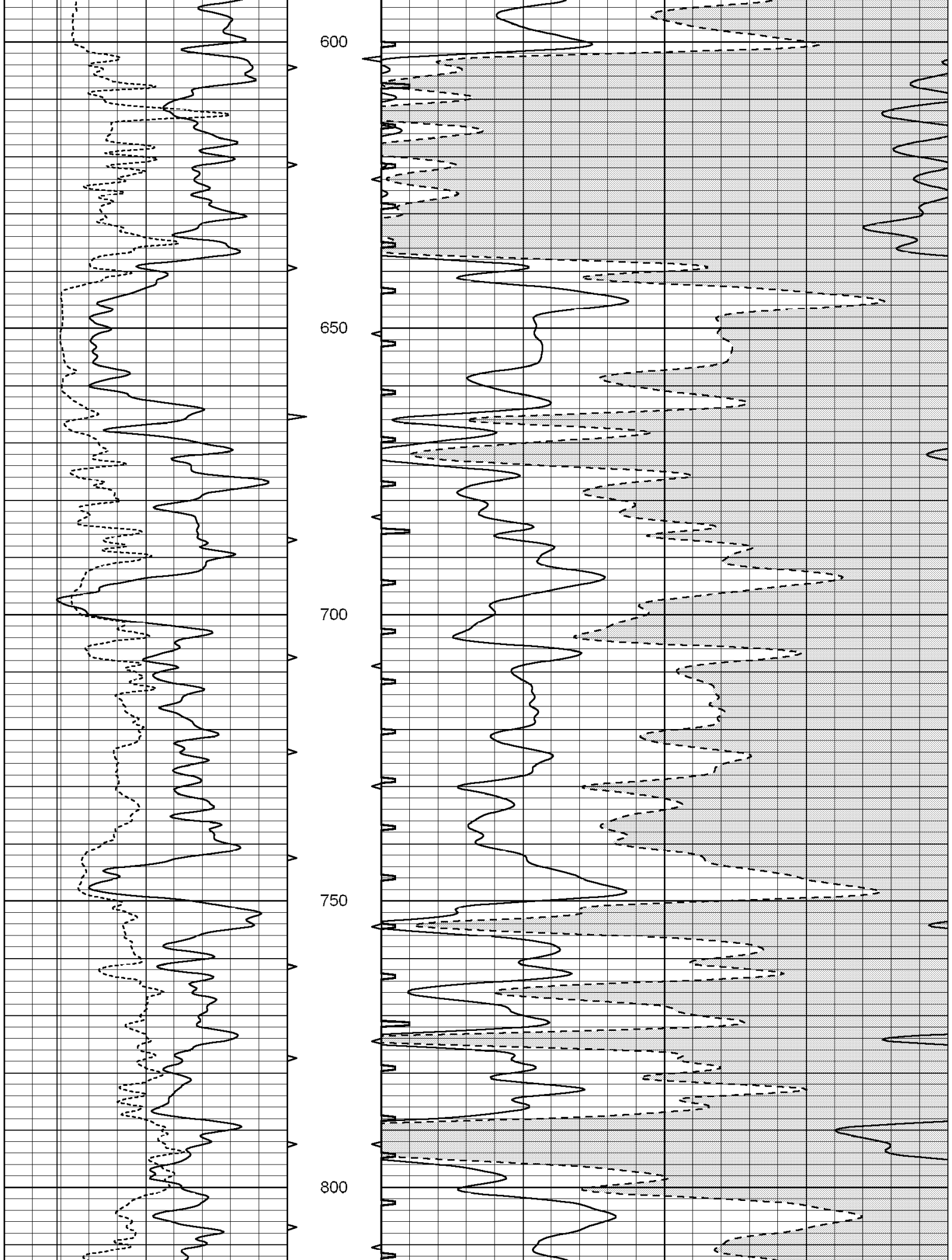
MAIN SECTION

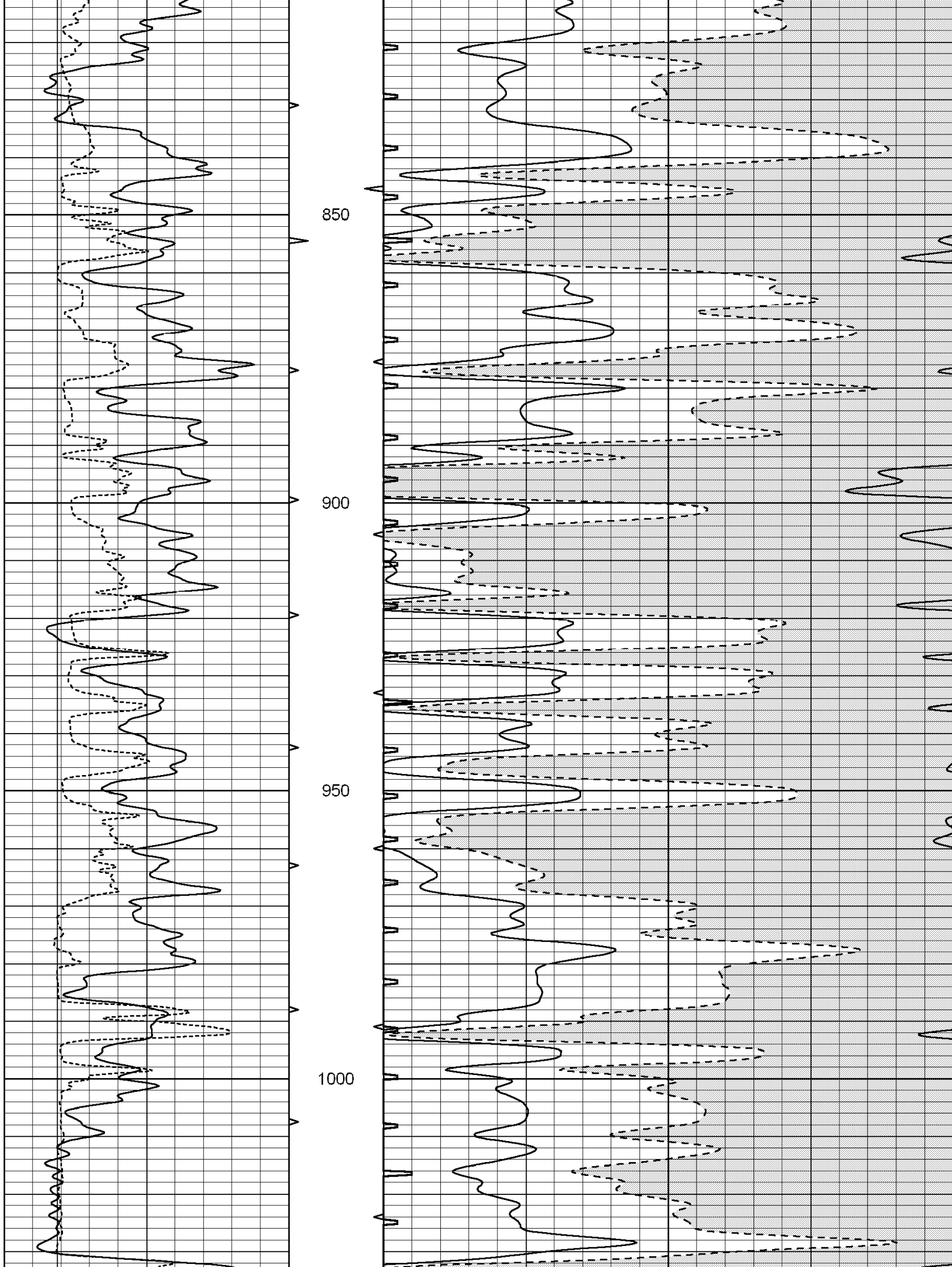
Database File: 004833pe.db
 Dataset Pathname: pass6.3
 Presentation Format: slt
 Dataset Creation: Wed Mar 10 20:25:31 2010 by Calc Open-Cased 060407
 Charted by: Depth in Feet scaled 1:240

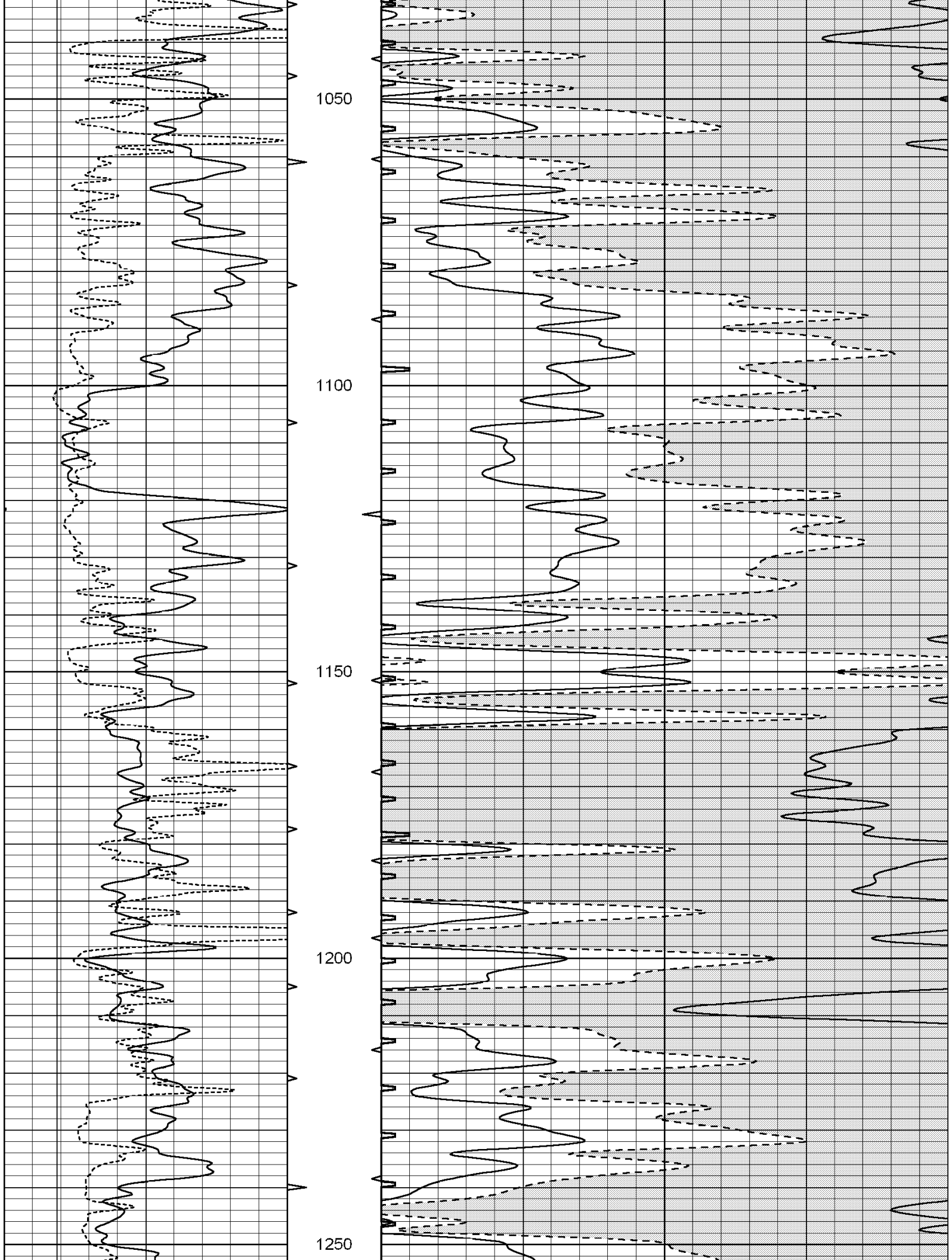
0	GAMMA RAY (GAPI)	150	ABHV	140	DELTA TIME (usec/ft)	40
6	CALIPER (in)	16	10 (ft3) 0	30	SONIC POROSITY (pu)	-10
			TBHV	0	ITT (msec)	20
			0 (ft3) 10			

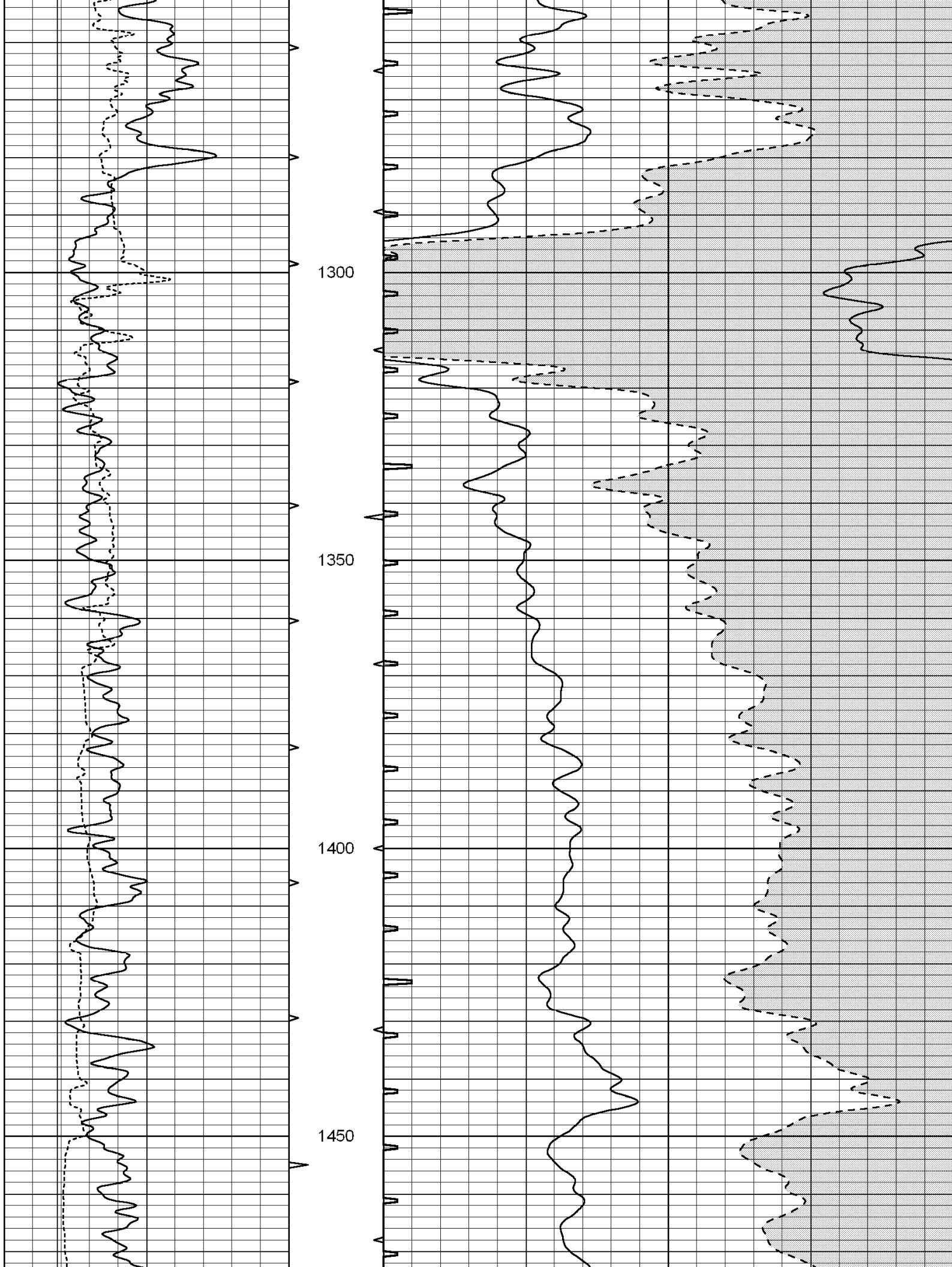


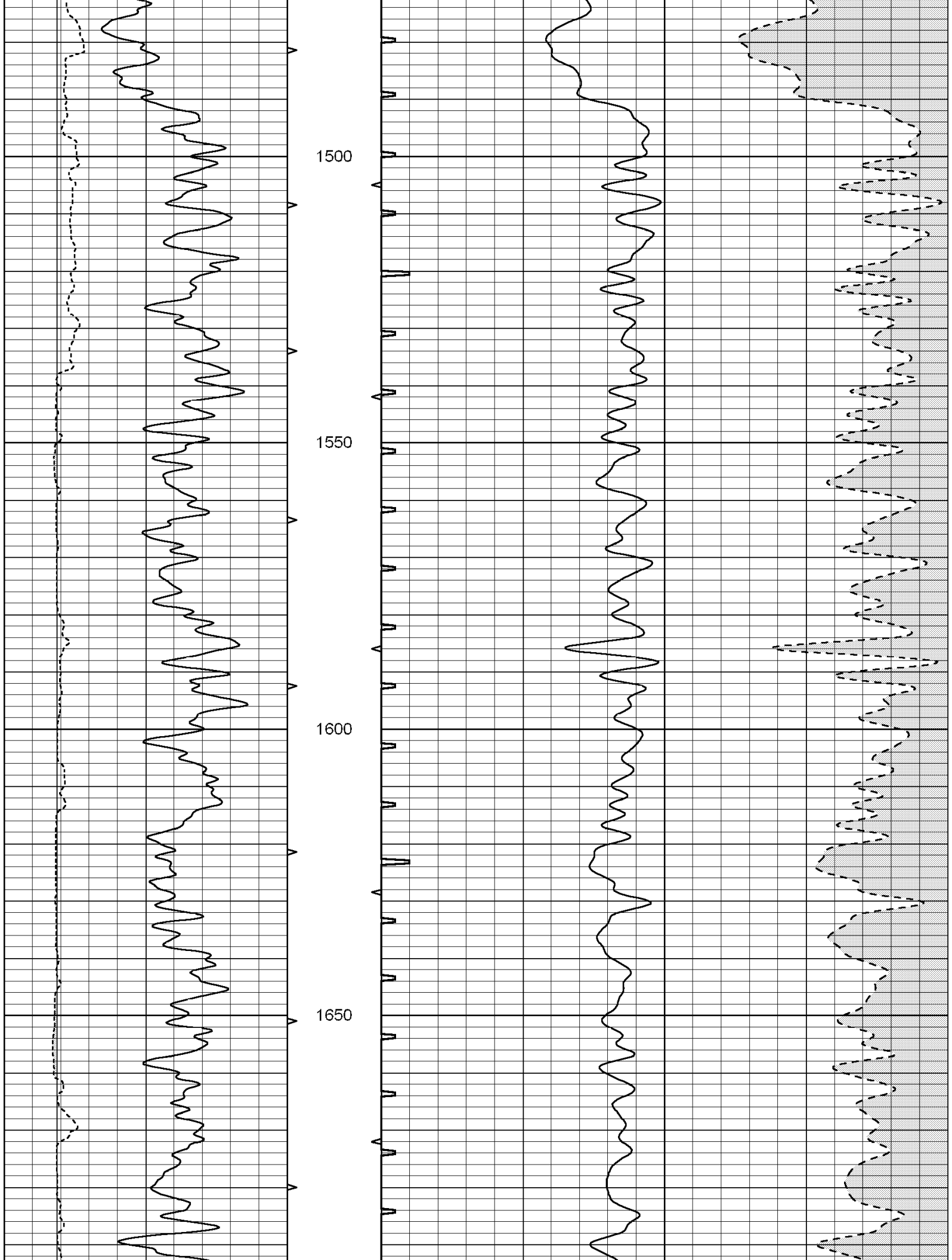


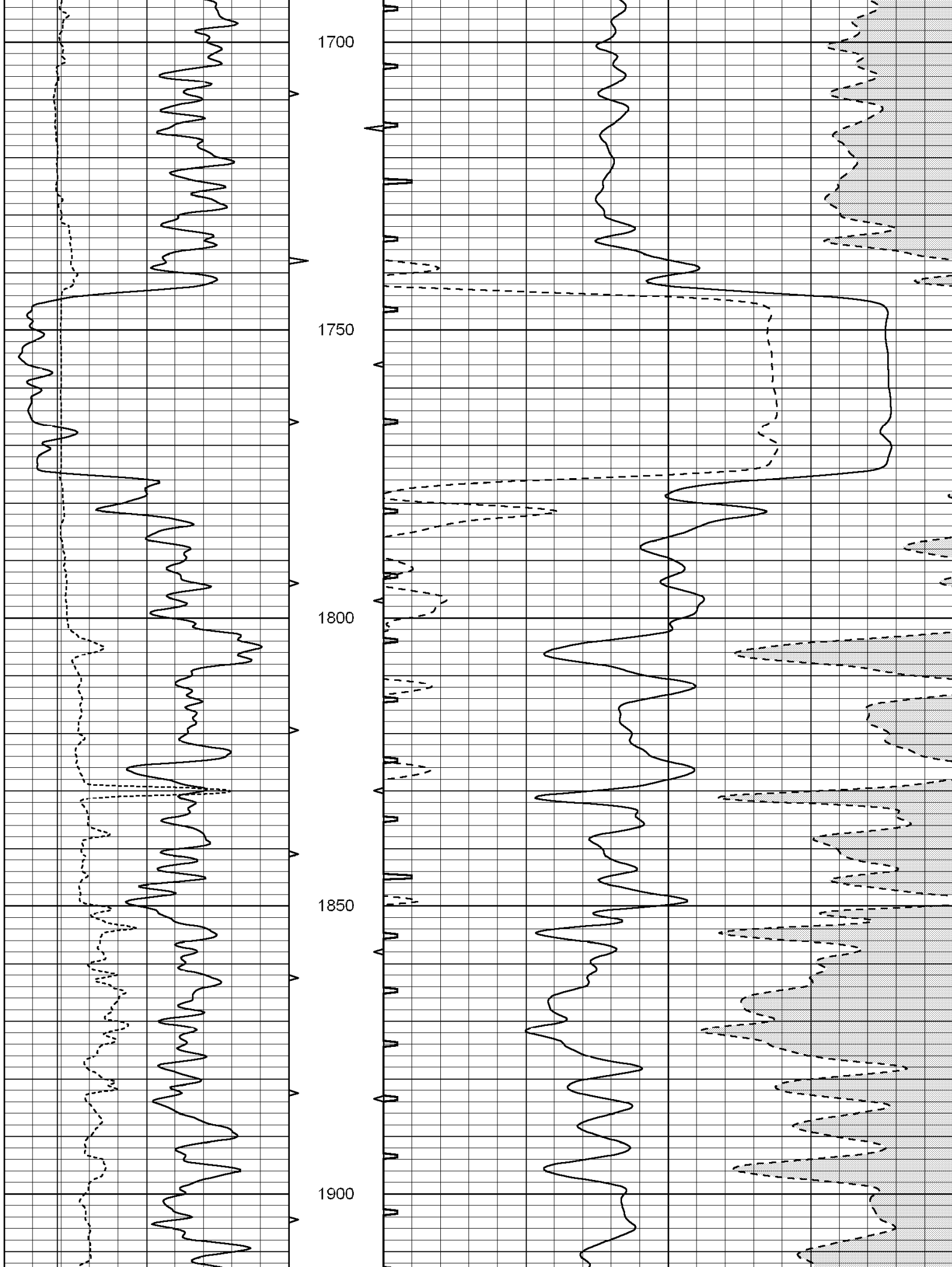


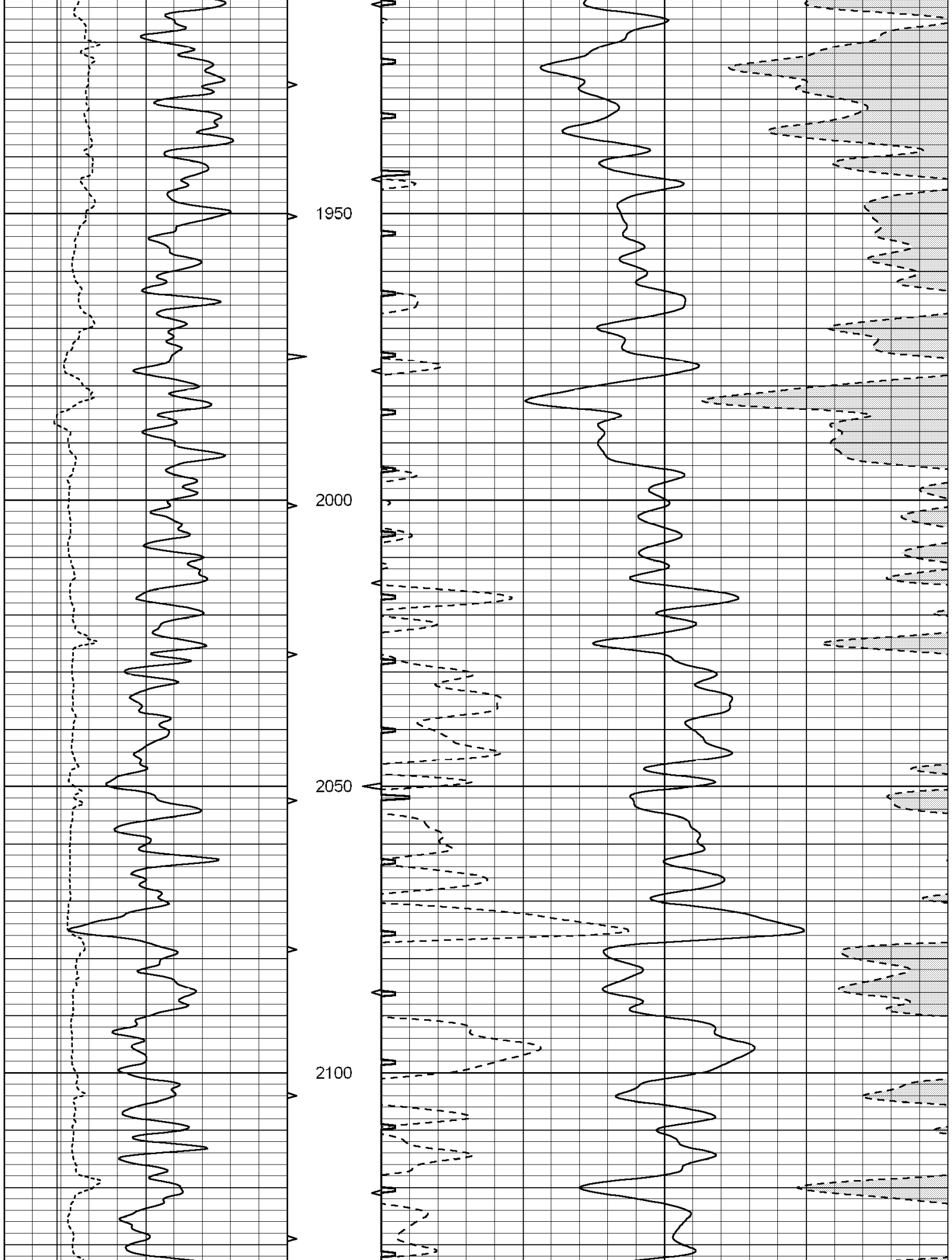


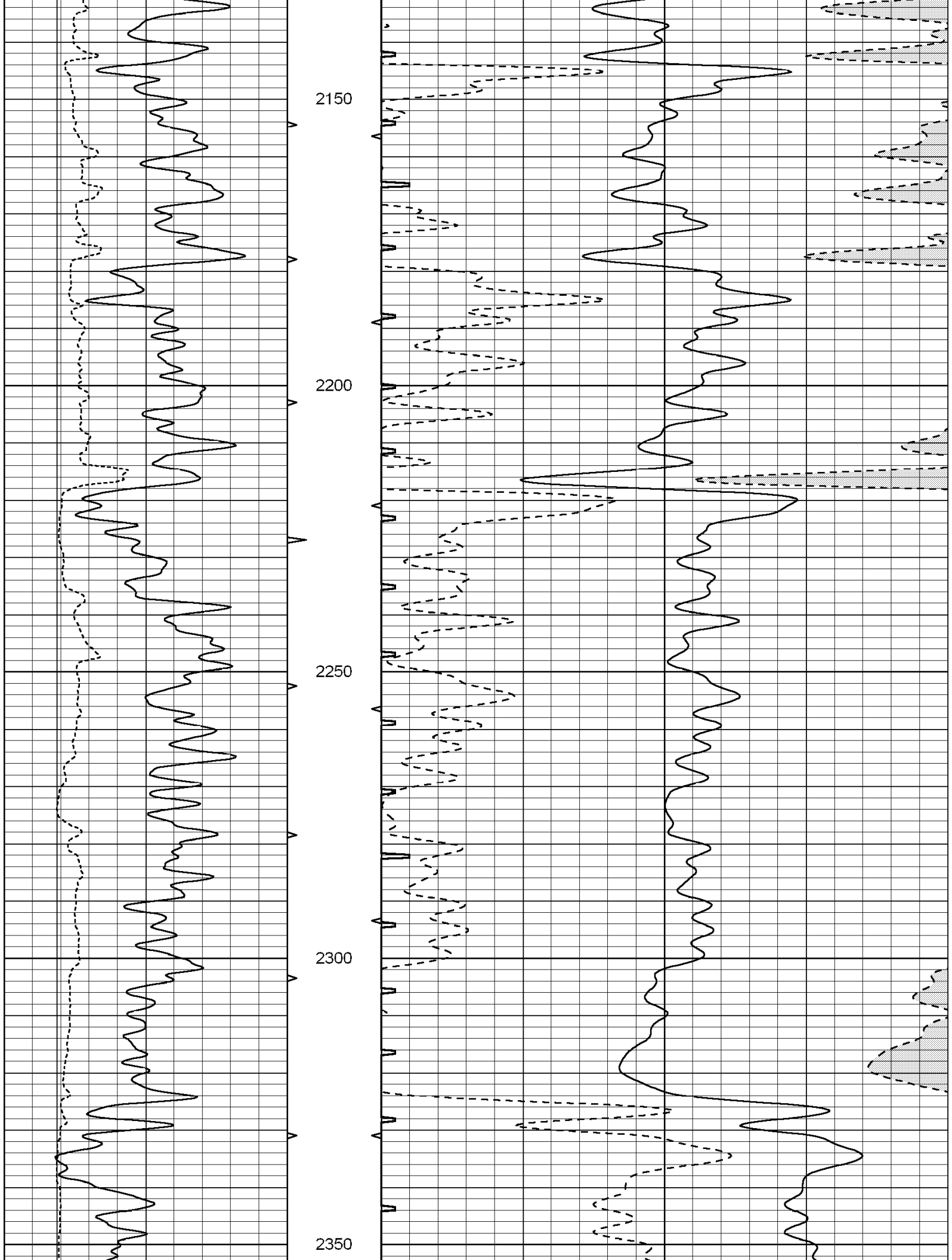


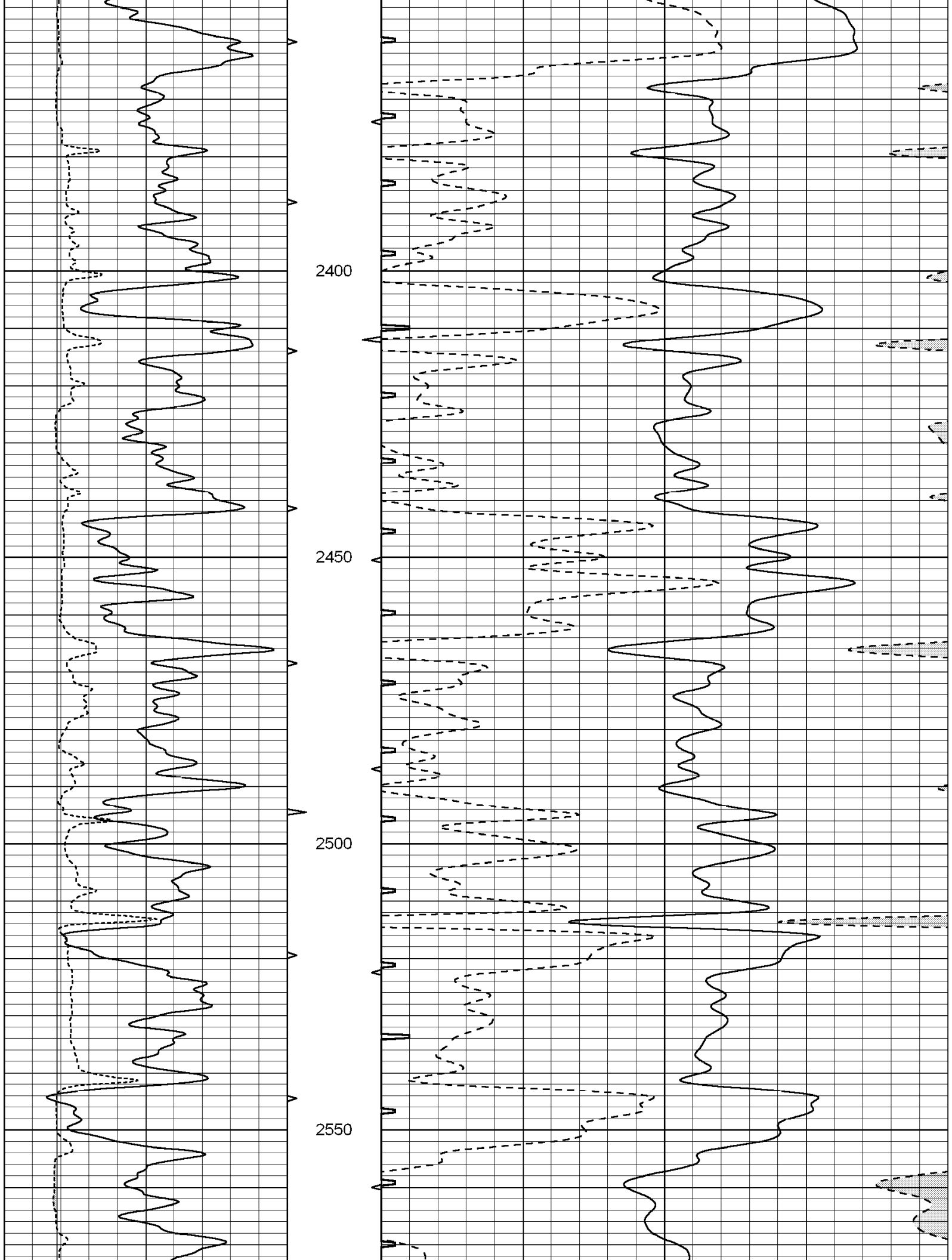


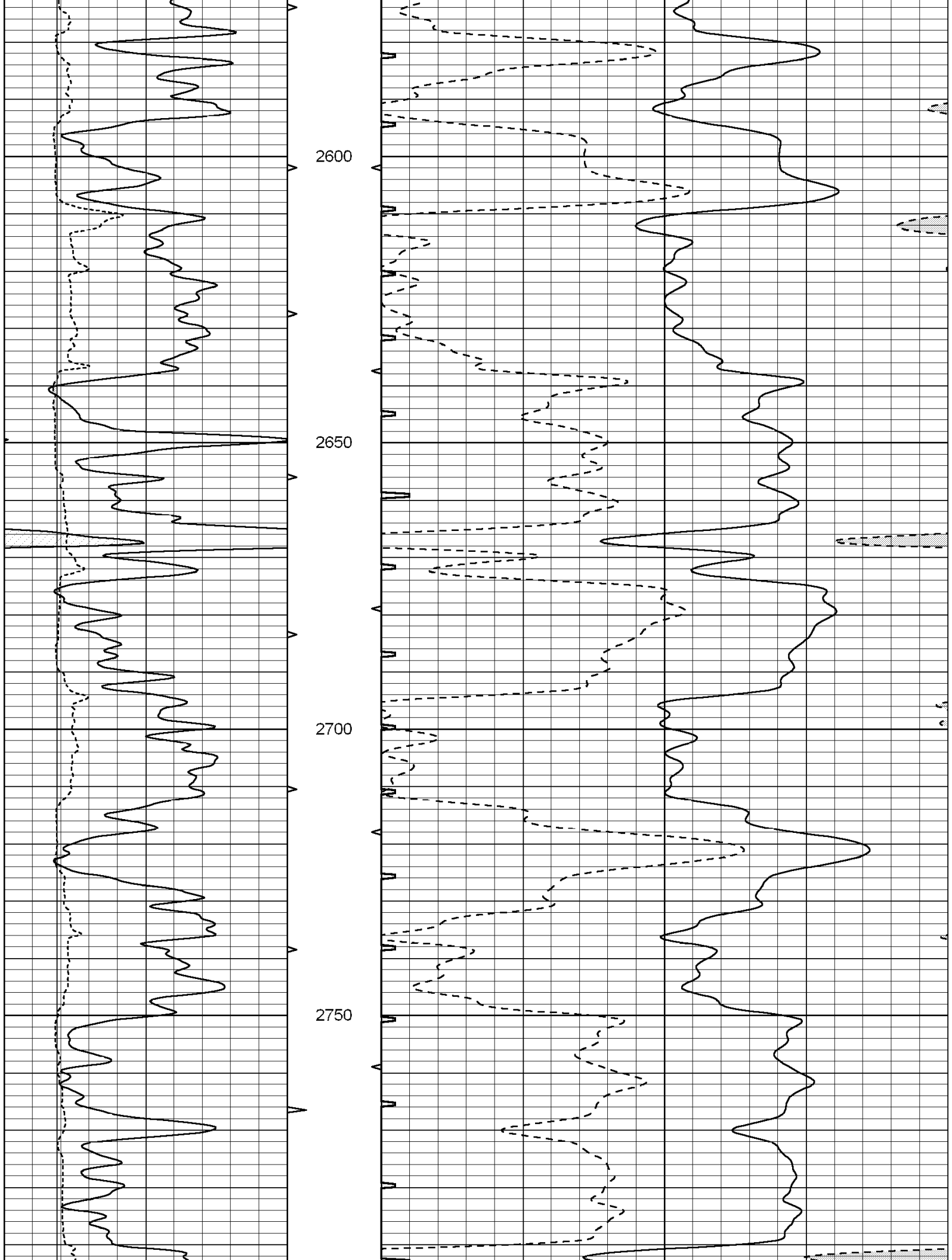


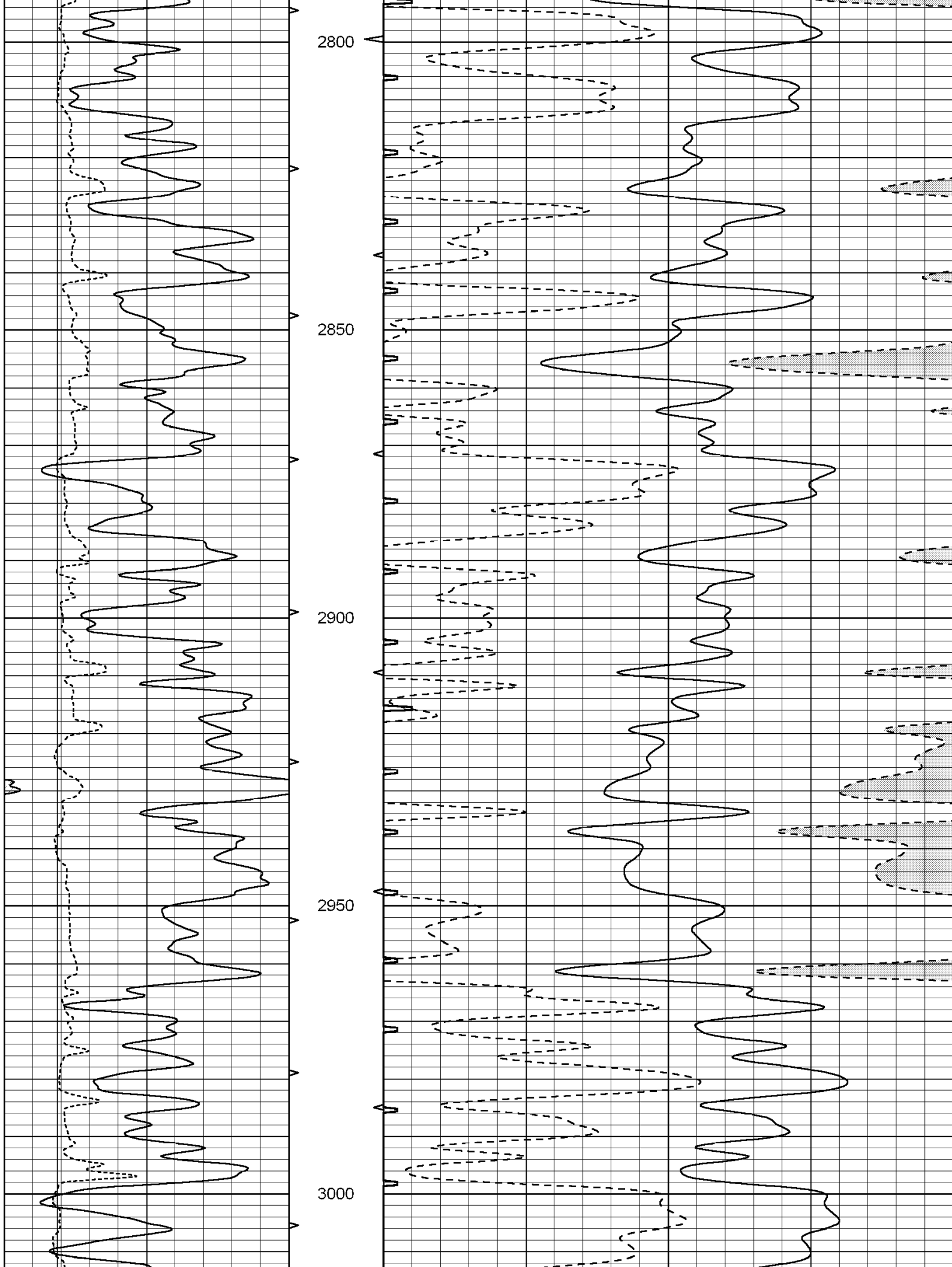


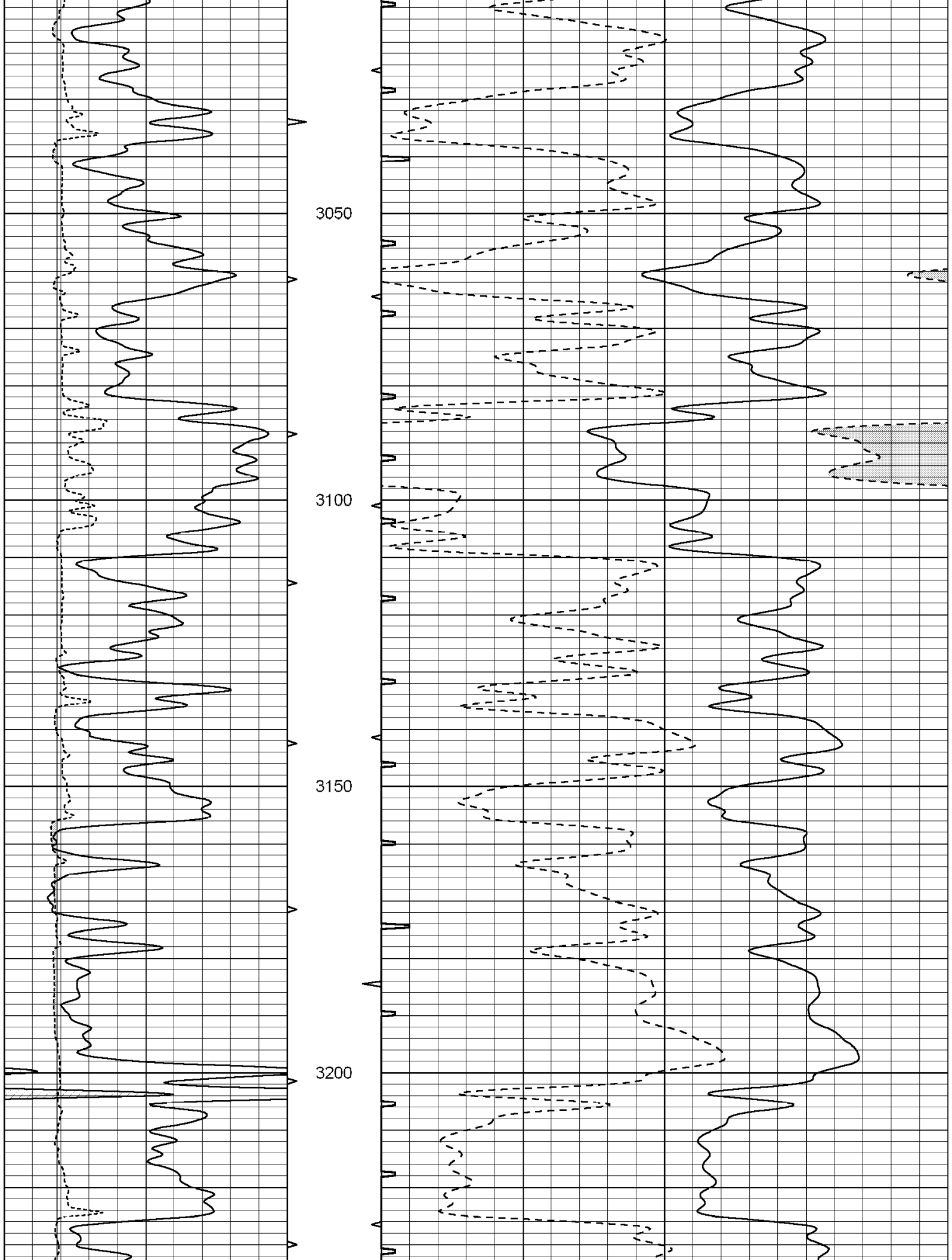


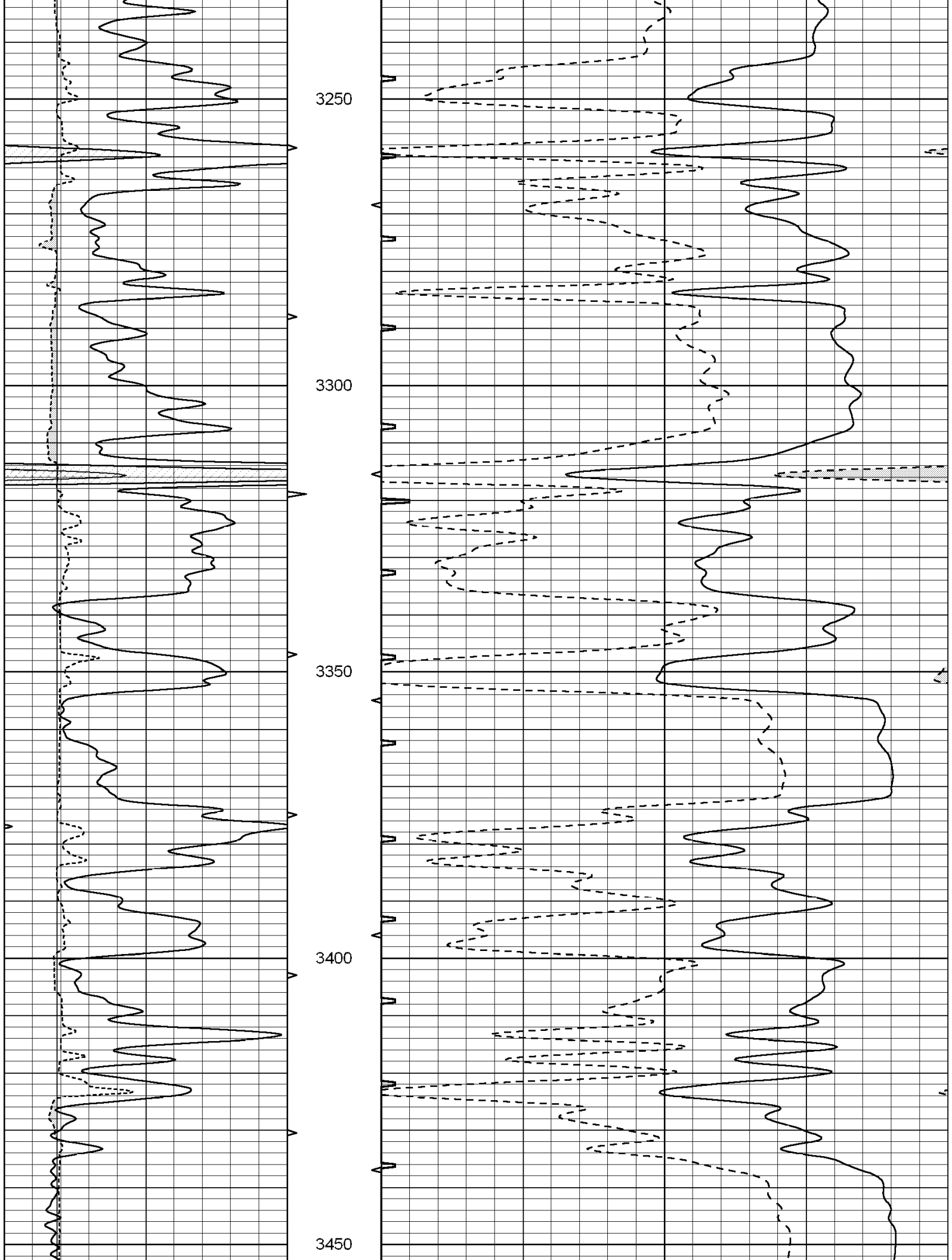


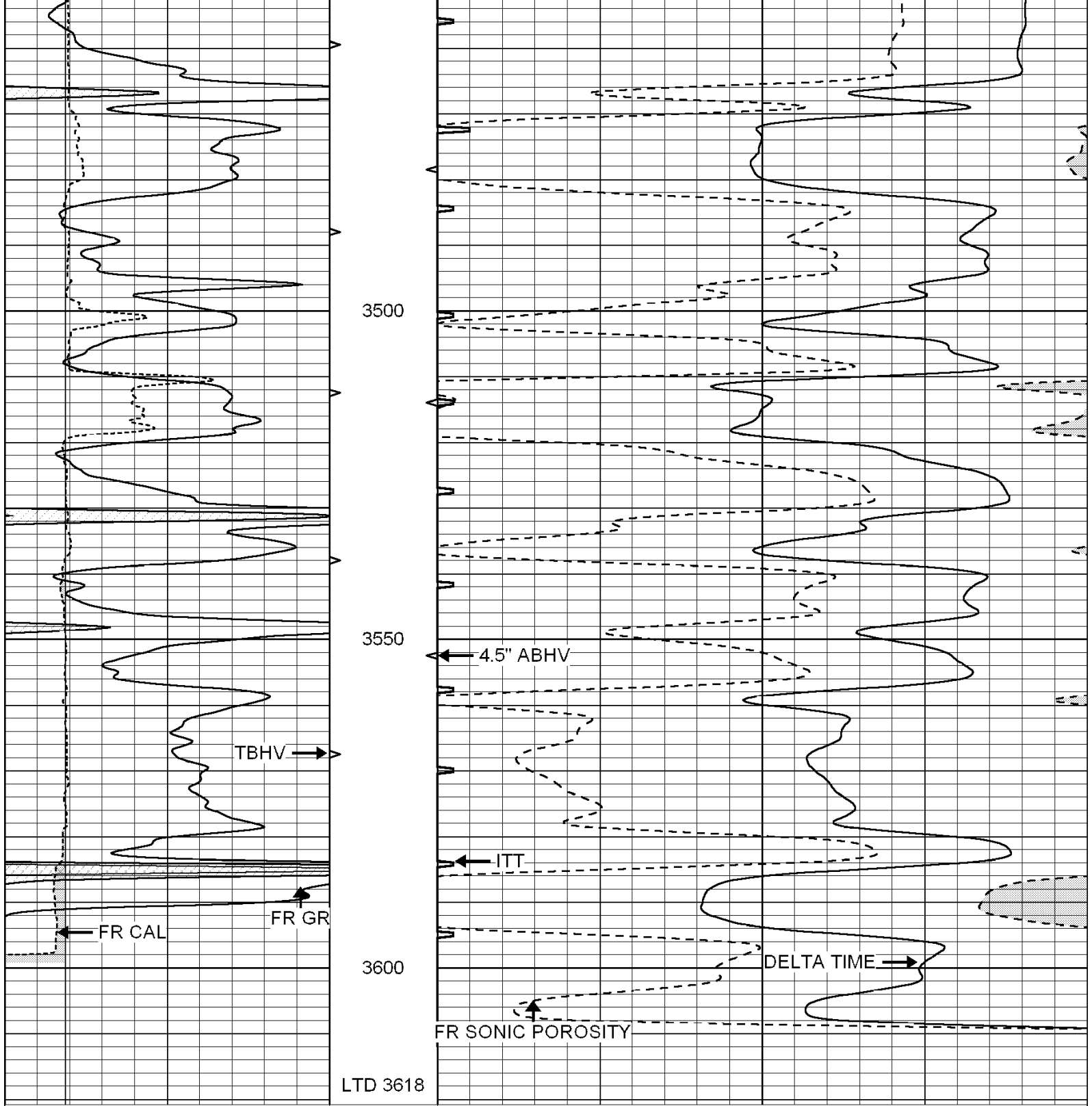












0	GAMMA RAY (GAPI)	150	ABHV	140	DELTA TIME (usec/ft)	40
6	CALIPER (in)	16	10 (ft3)	30	SONIC POROSITY (pu)	-10
			TBHV	0	ITT (msec)	20
			0 (ft3)	10		



REPEAT SECTION

Dataset Pathname: pass5.6
 Presentation Format: slt
 Dataset Creation: Wed Mar 10 19:53:56 2010
 Charted by: Depth in Feet scaled 1:240

0	GAMMA RAY (GAPI)	150	ABHV	140	DELTA TIME (usec/ft)	40
6	CALIPER (in)	16	10 (ft3) 0	30	SONIC POROSITY (pu)	-10
			TBHV	0	ITT (msec)	20
			0 (ft3) 10			

