



SUPERIOR
Hays,
Kansas

SONIC
LOG

Company I.A. OPERATING, INC.
Well MADDY #4-1
Field WILDCAT
County NORTON
State KANSAS

Company I.A. OPERATING, INC.
Well MADDY #4-1
Field WILDCAT
County NORTON State KANSAS

Location: API #: 15-137-20512-0000
2060' FSL & 2310' FWL
SEC 4 TWP 3S RGE 24W
Permanent Datum GROUND LEVEL Elevation 2425
Log Measured From KELLY BUSHING 5' A.G.L.
Drilling Measured From KELLY BUSHING
Other Services
CDL/CNL
DIL/MEL
Elevation
K.B. 2430
D.F. 2428
G.L. 2425

Date	3/4/10		
Run Number	TWO		
Depth Driller	3720		
Depth Logger	3708		
Bottom Logged Interval	3695		
Top Log Interval	200		
Casing Driller	8 5/8"@218'		
Casing Logger	218		
Bit Size	7 7/8"		
Type Fluid In Hole	CHEMICAL MUD	CHLORIDES 900 PPM	
Density / Viscosity	9.1/63		
pH / Fluid Loss	10.7/7.6		
Source of Sample	FLOWLINE		
Rm @ Meas. Temp	1.50@72F		
Rmf @ Meas. Temp	1.13@72F		
Rmc @ Meas. Temp	1.80@72F		
Source of Rmf / Rmc	MEASUREMENT		
Rm @ BHT	.956@113F		
Time Circulation Stopped	4 HOURS		
Time Logger on Bottom	10:15 A.M.		
Maximum Recorded Temperature	113F		
Equipment Number	0836		
Location	HAYS, KANSAS		
Recorded By	JEFF LUEBBERS		
Witnessed By	STEVE MILLER		

<<< Fold Here >>>

All interpretations are opinions based on inferences from electrical or other measurements and we cannot and do not guarantee the accuracy or correctness of any interpretation, and we shall not, except in the case of gross or willful negligence on our part, be liable or responsible for any loss, costs, damages, or expenses incurred or sustained by anyone resulting from any interpretation made by any of our officers, agents or employees. These interpretations are also subject to our general terms and conditions set out in our current Price Schedule.

Comments

THANK YOU FOR USING SUPERIOR WELL SERVICE HAYS, KANSAS (785) 628-6395
DIRECTIONS
NORTON, KS. 8W. ON HWY 36 TO "RD. 8W", 1S. TO "RD. N", 1/2E., N. INTO

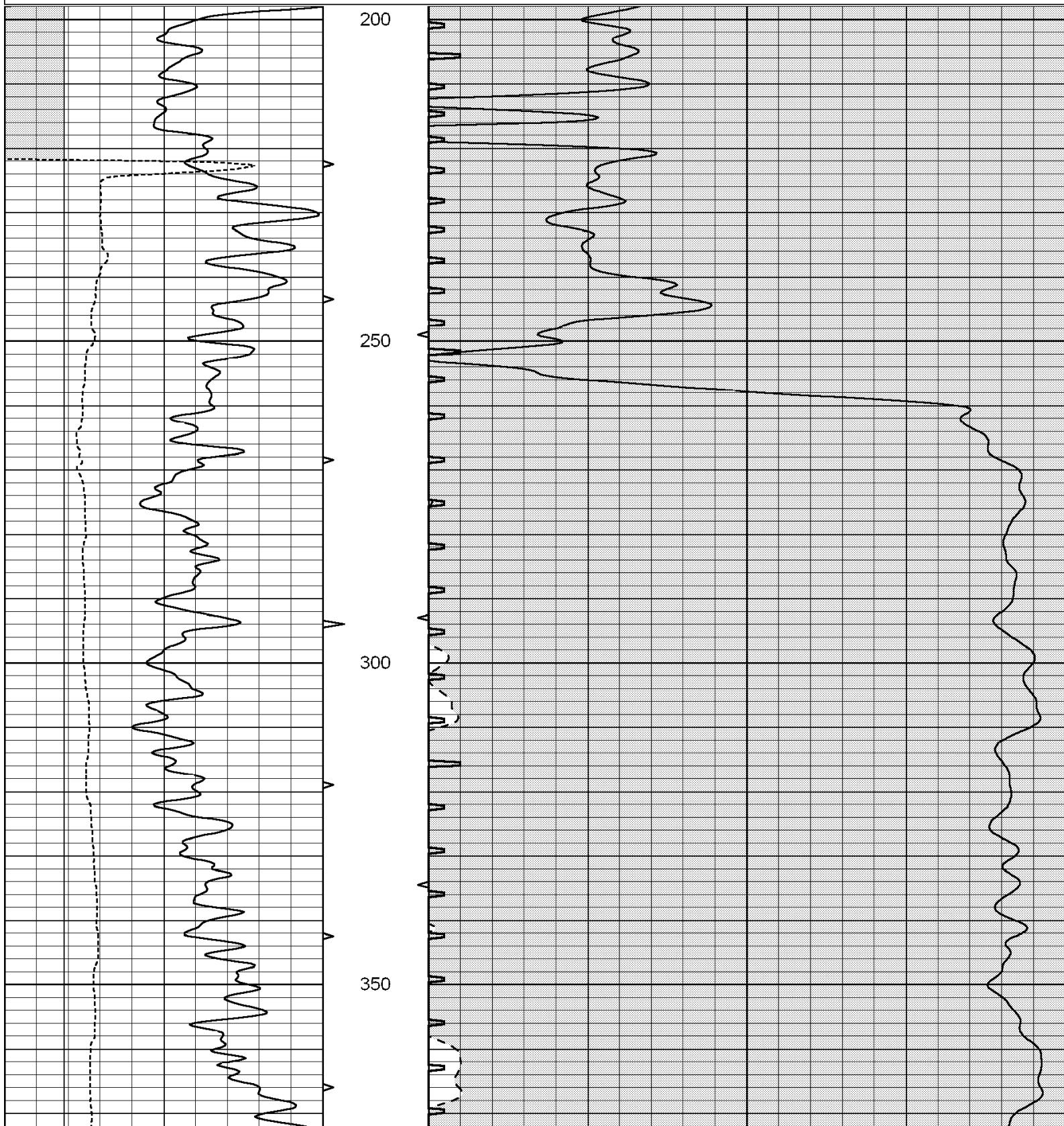


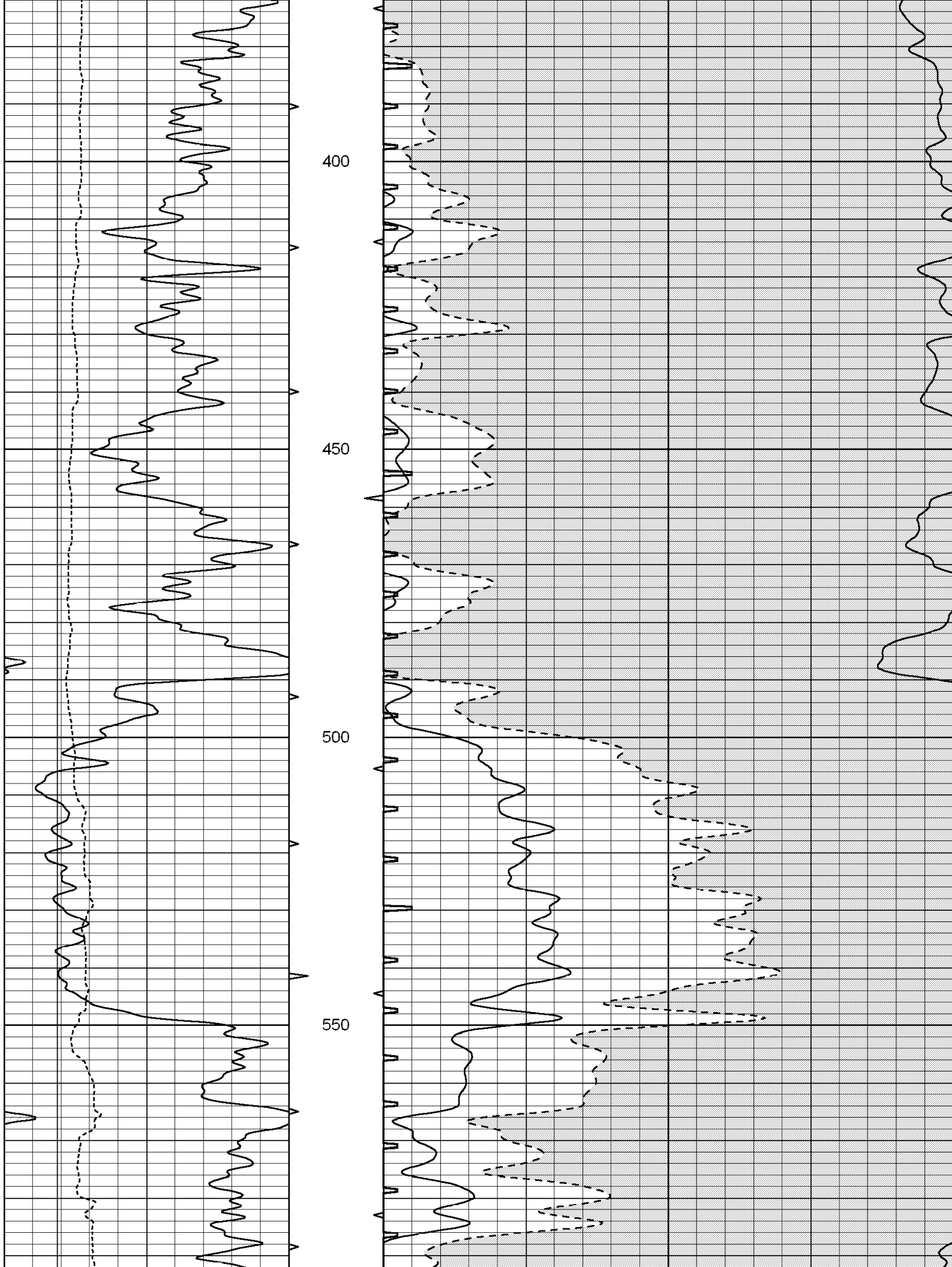
SUPERIOR
Hays,
Kansas

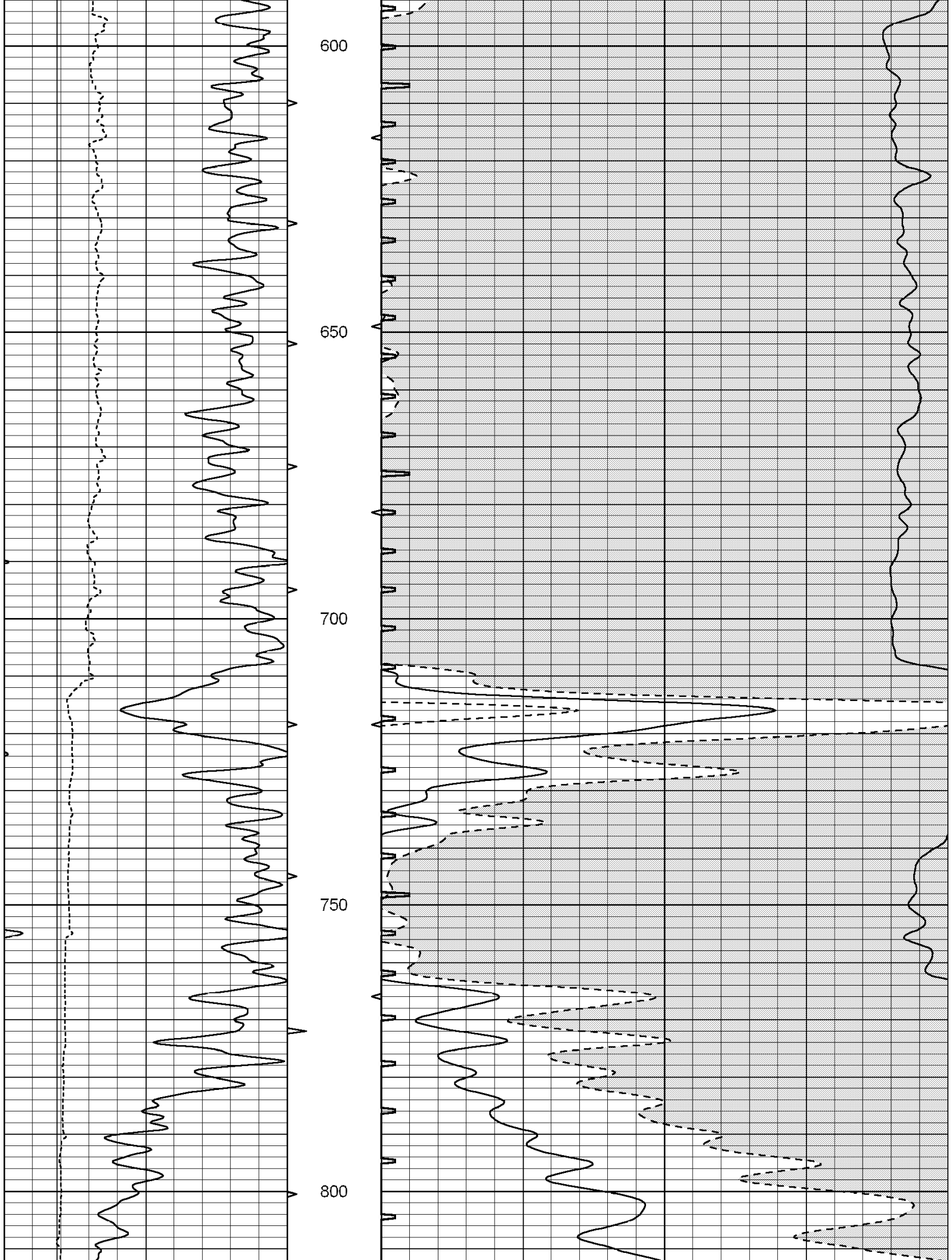
MAIN SECTION

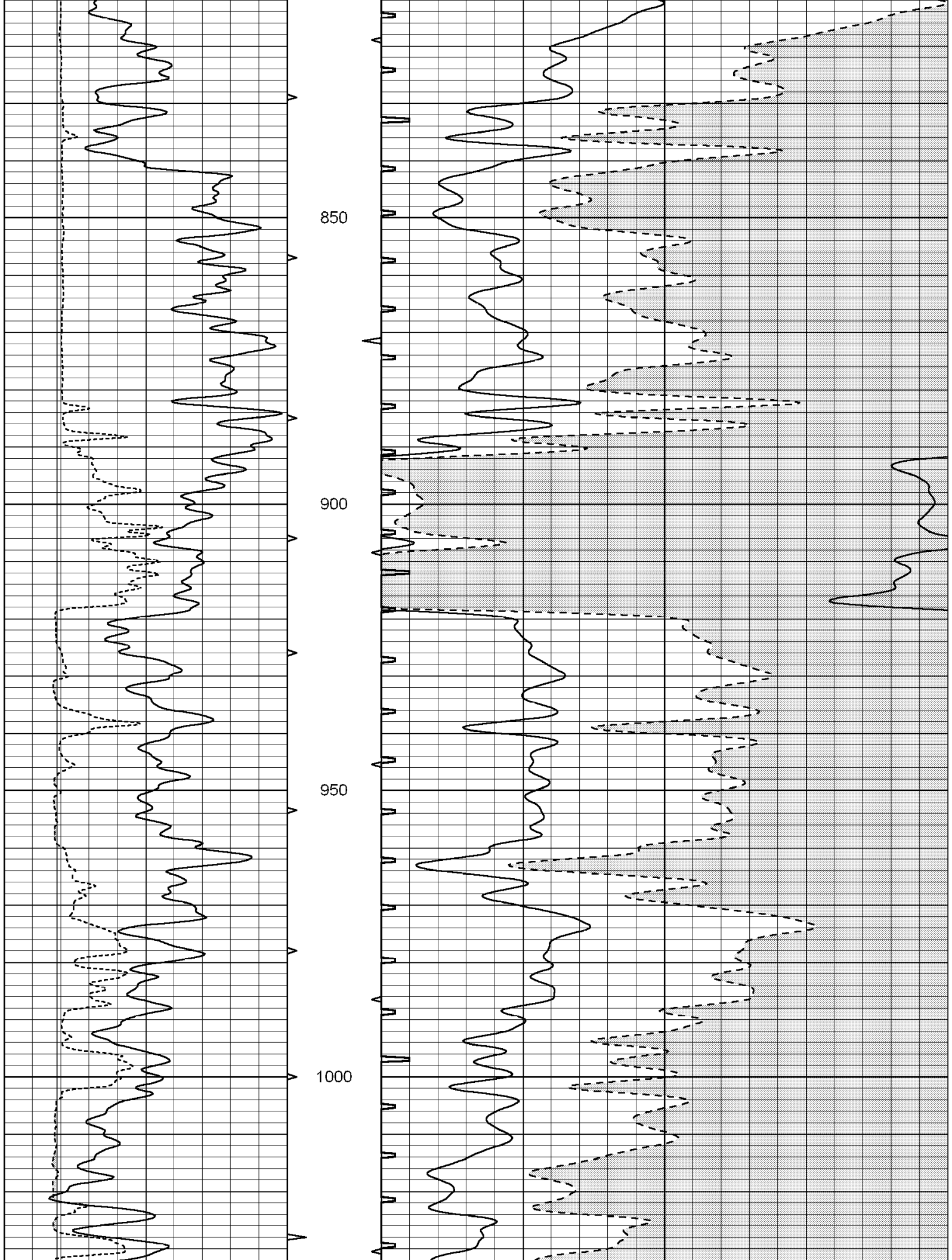
Database File: 004827ddn.db
 Dataset Pathname: pass7.4
 Presentation Format: slt
 Dataset Creation: Thu Mar 04 13:53:19 2010 by Calc Open-Cased 060407
 Charted by: Depth in Feet scaled 1:240

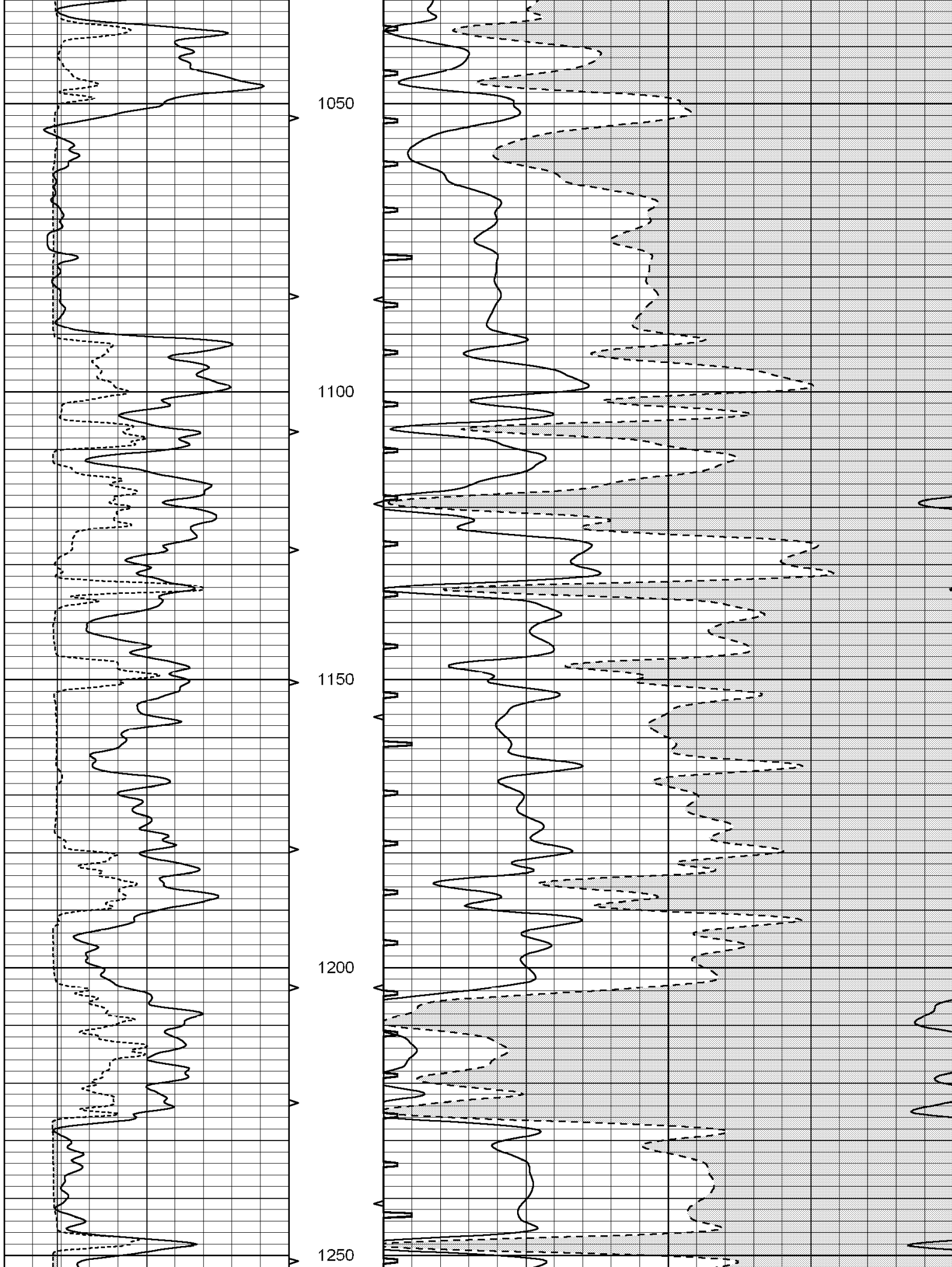
0	GAMMA RAY (GAPI)	150	ABHV	140	DELTA TIME (usec/ft)	40
6	CALIPER (in)	16	10 (ft3) 0	30	SONIC POROSITY (pu)	-10
			TBHV	0	ITT (msec)	20
			0 (ft3) 10			

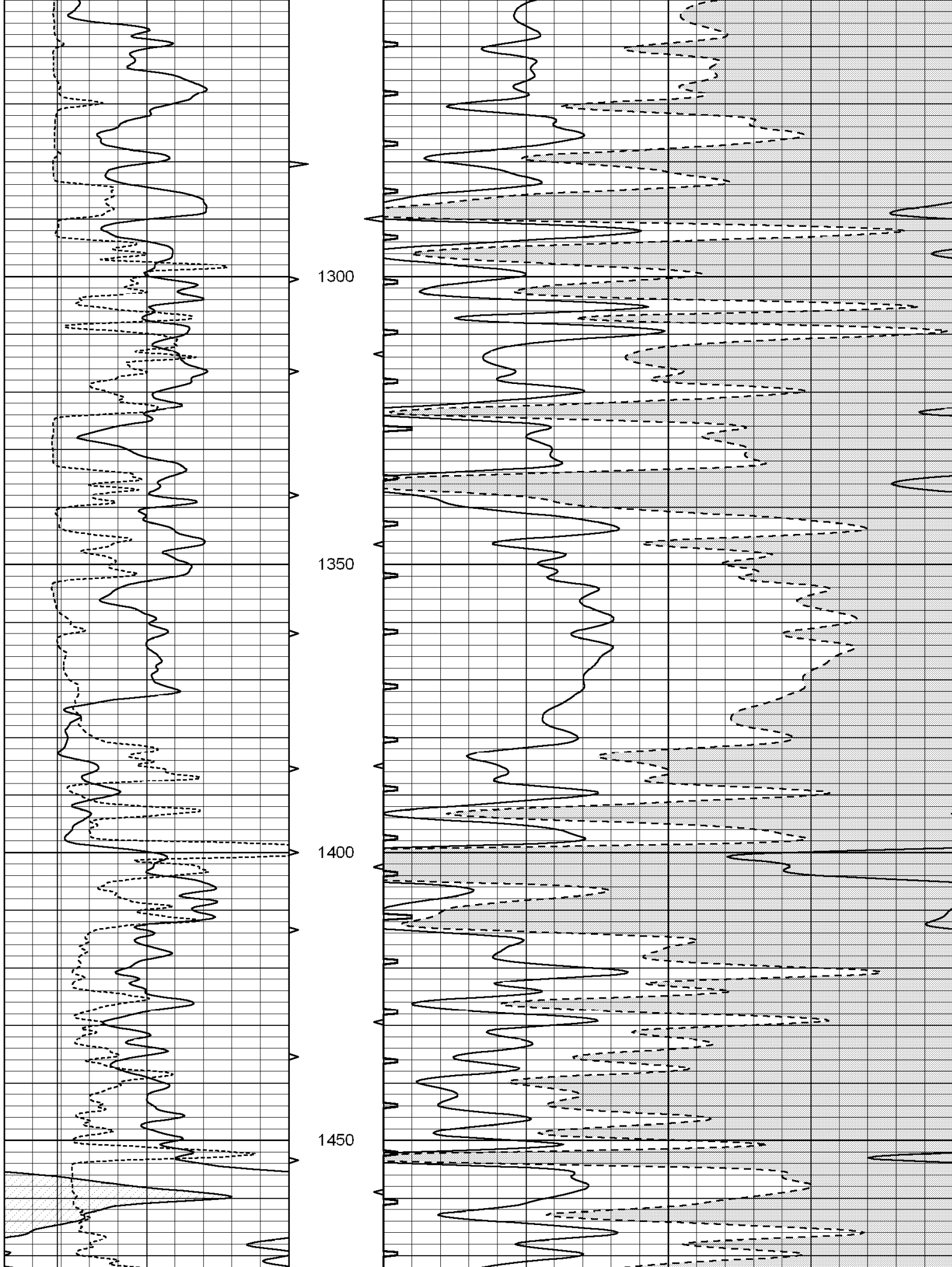


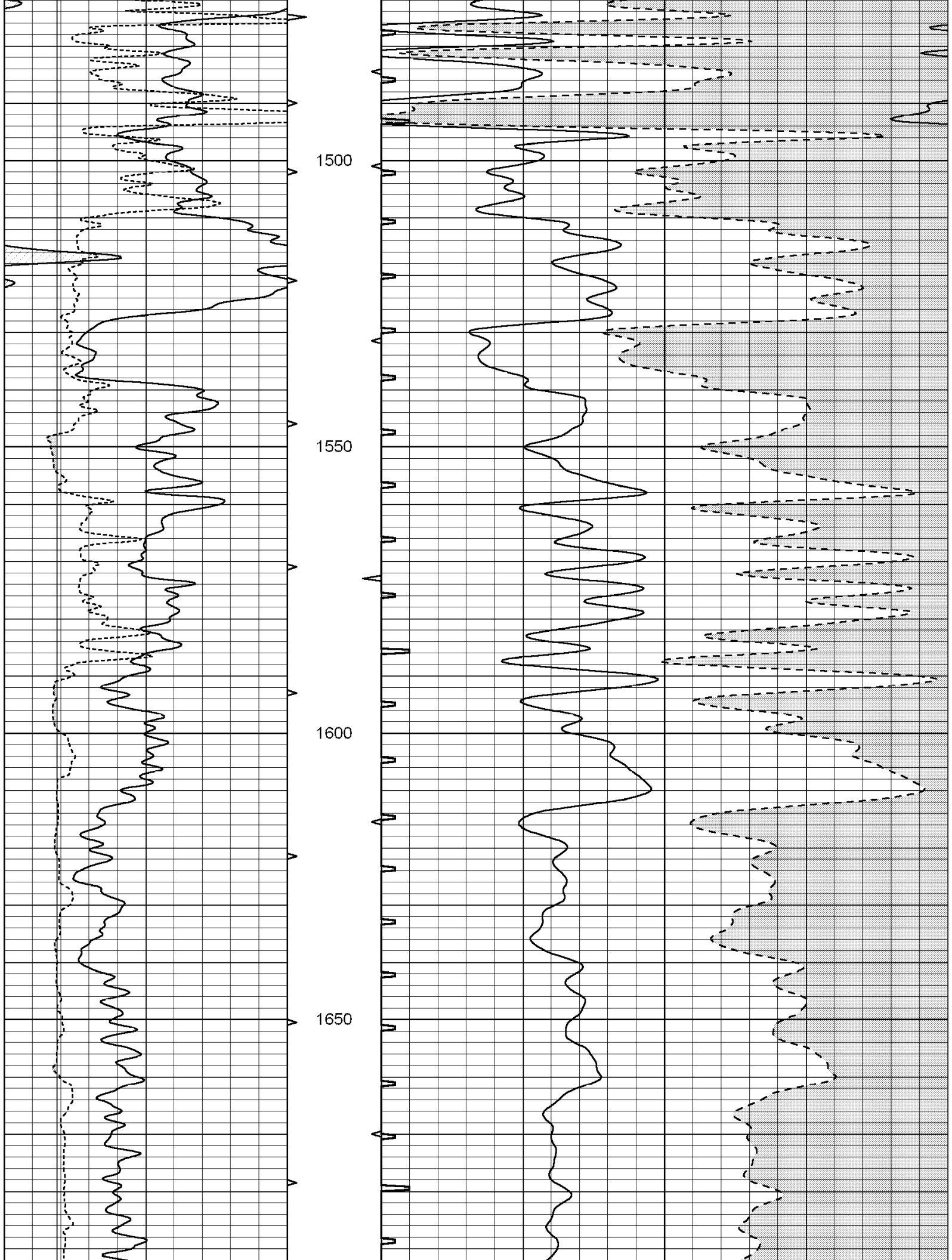


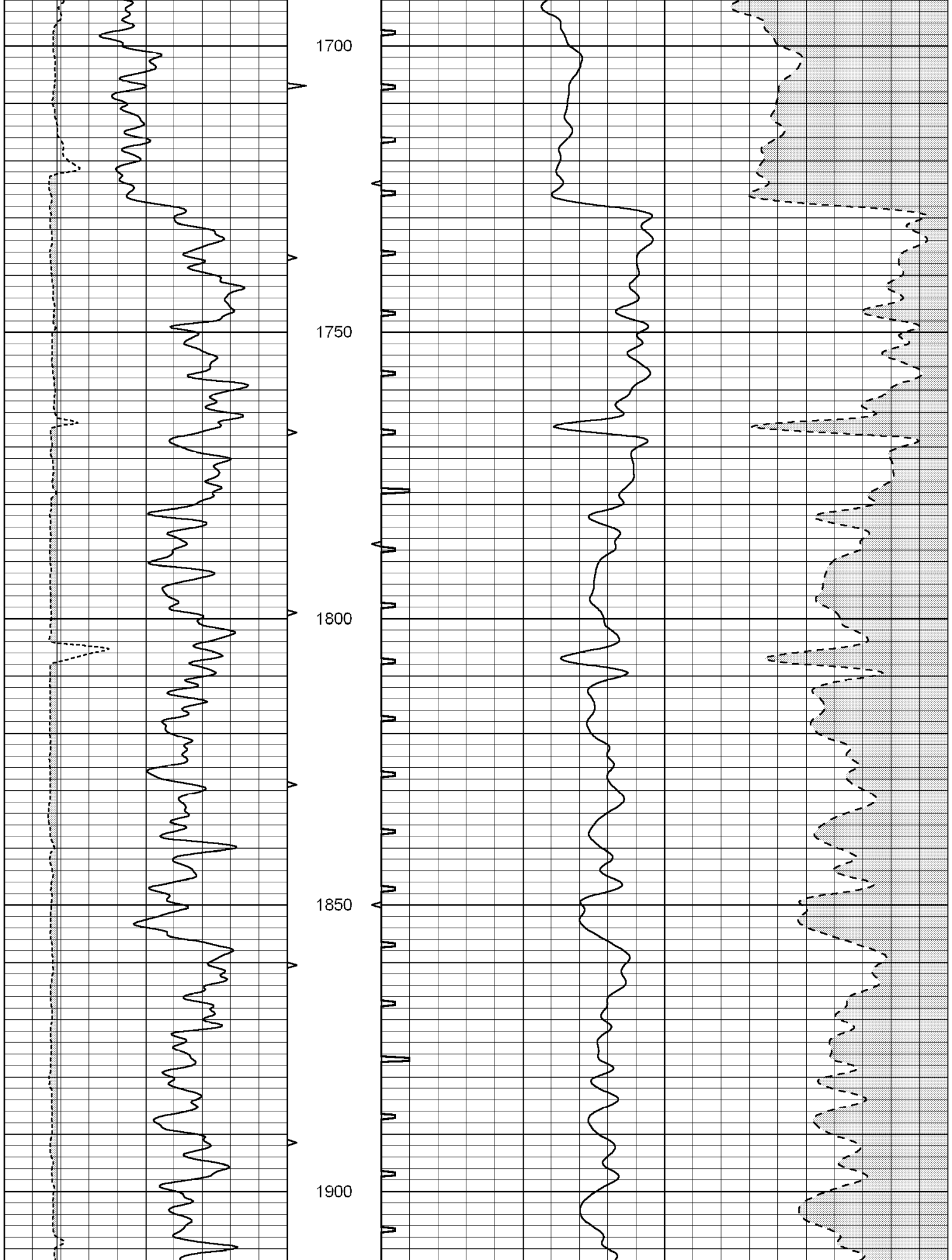


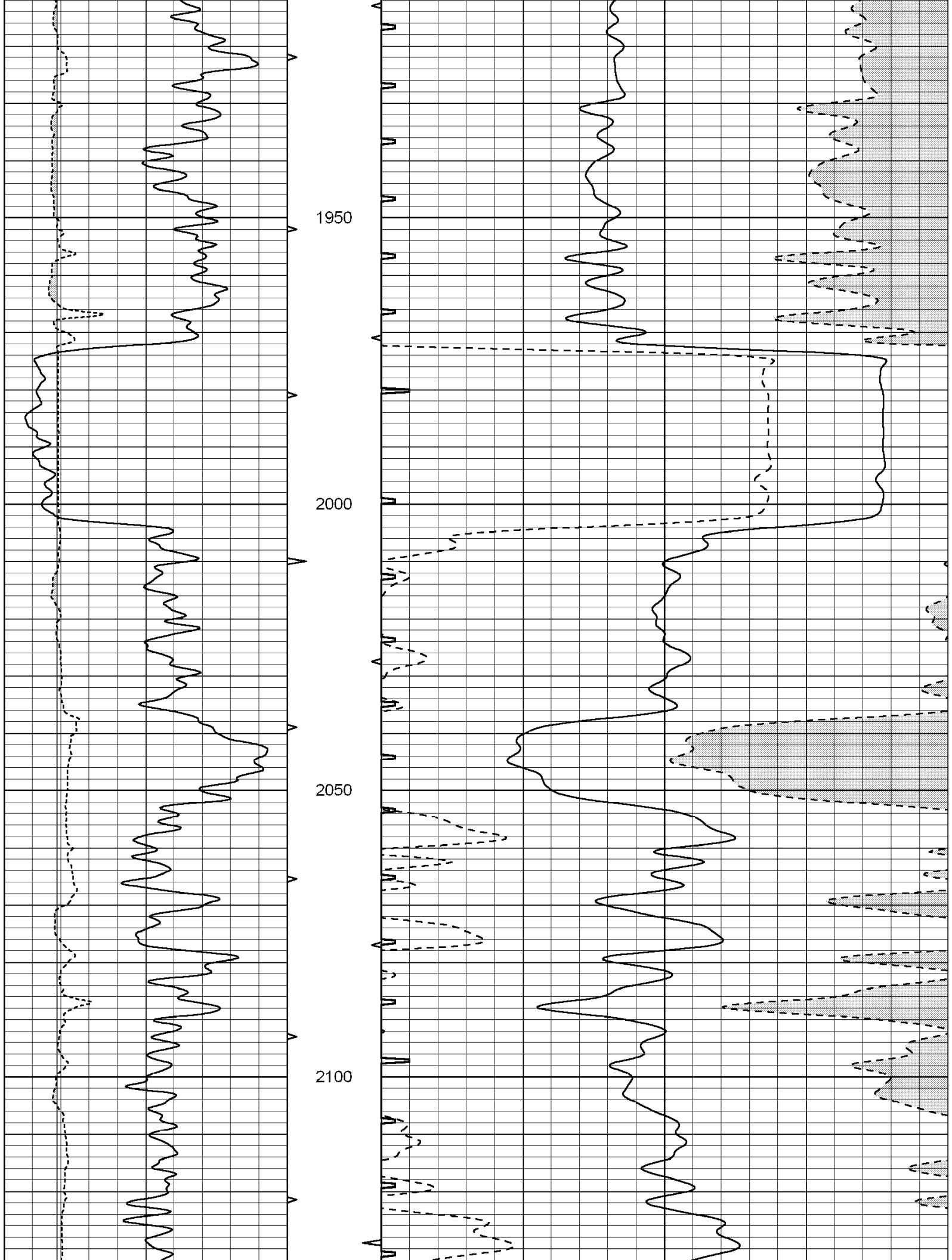


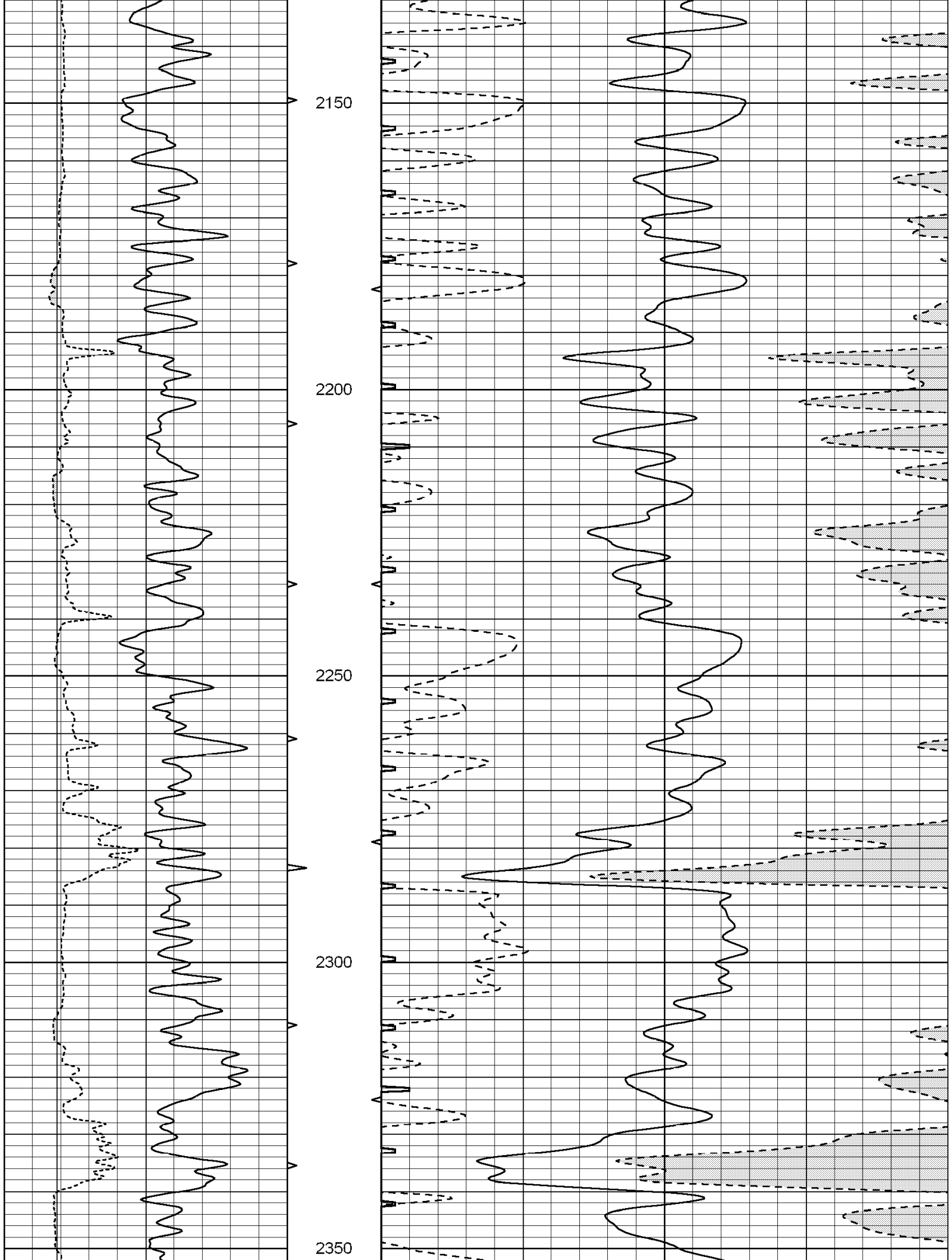


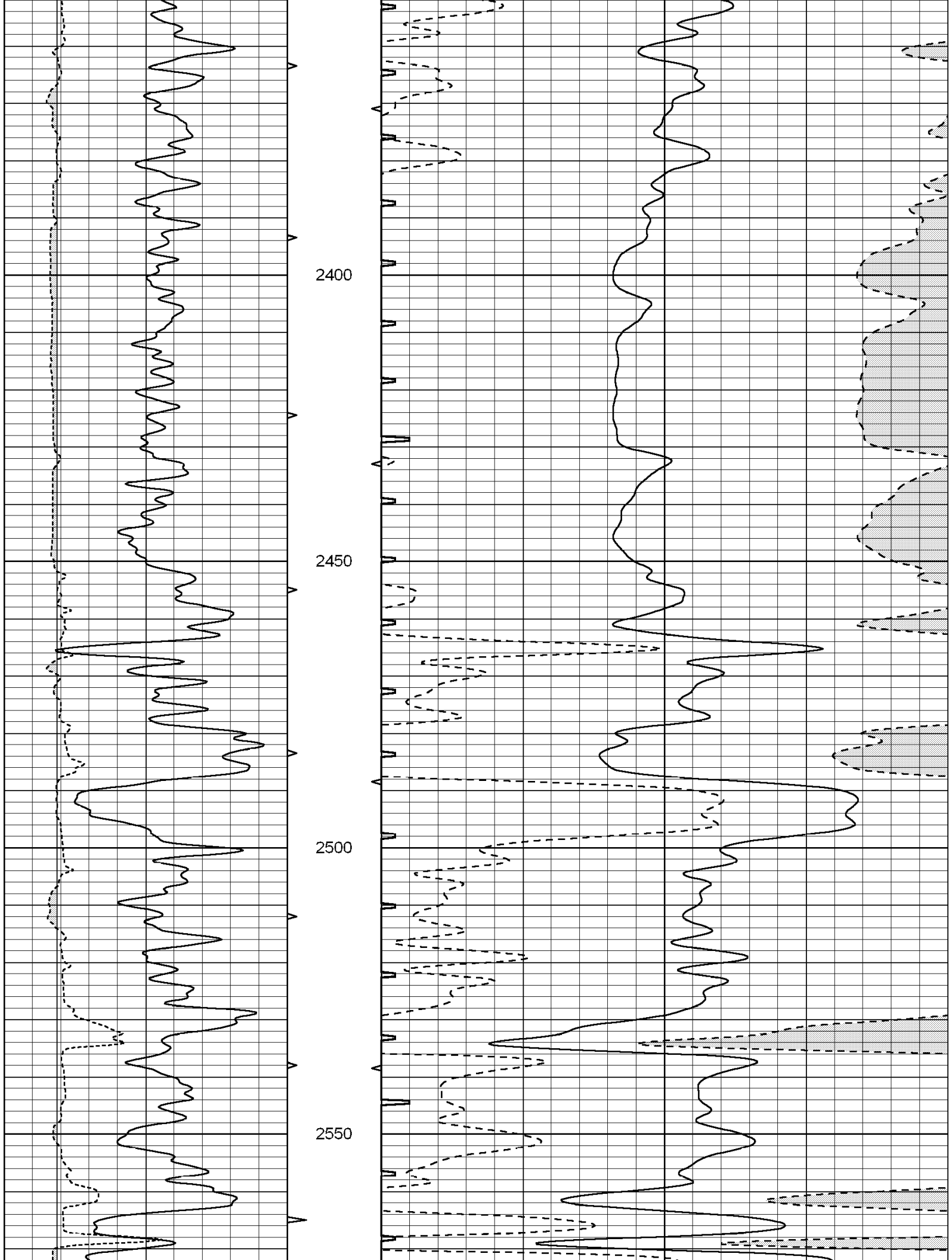


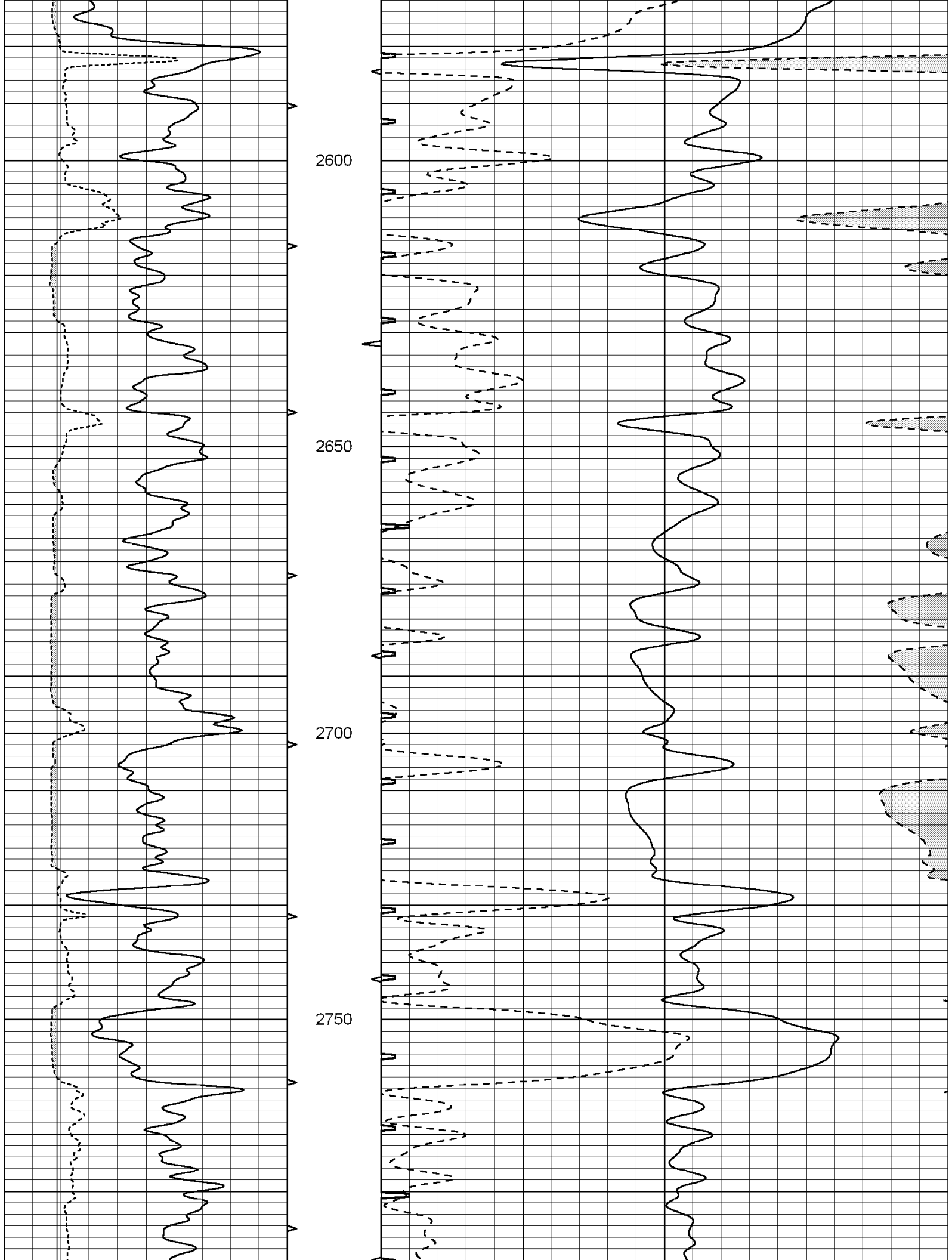


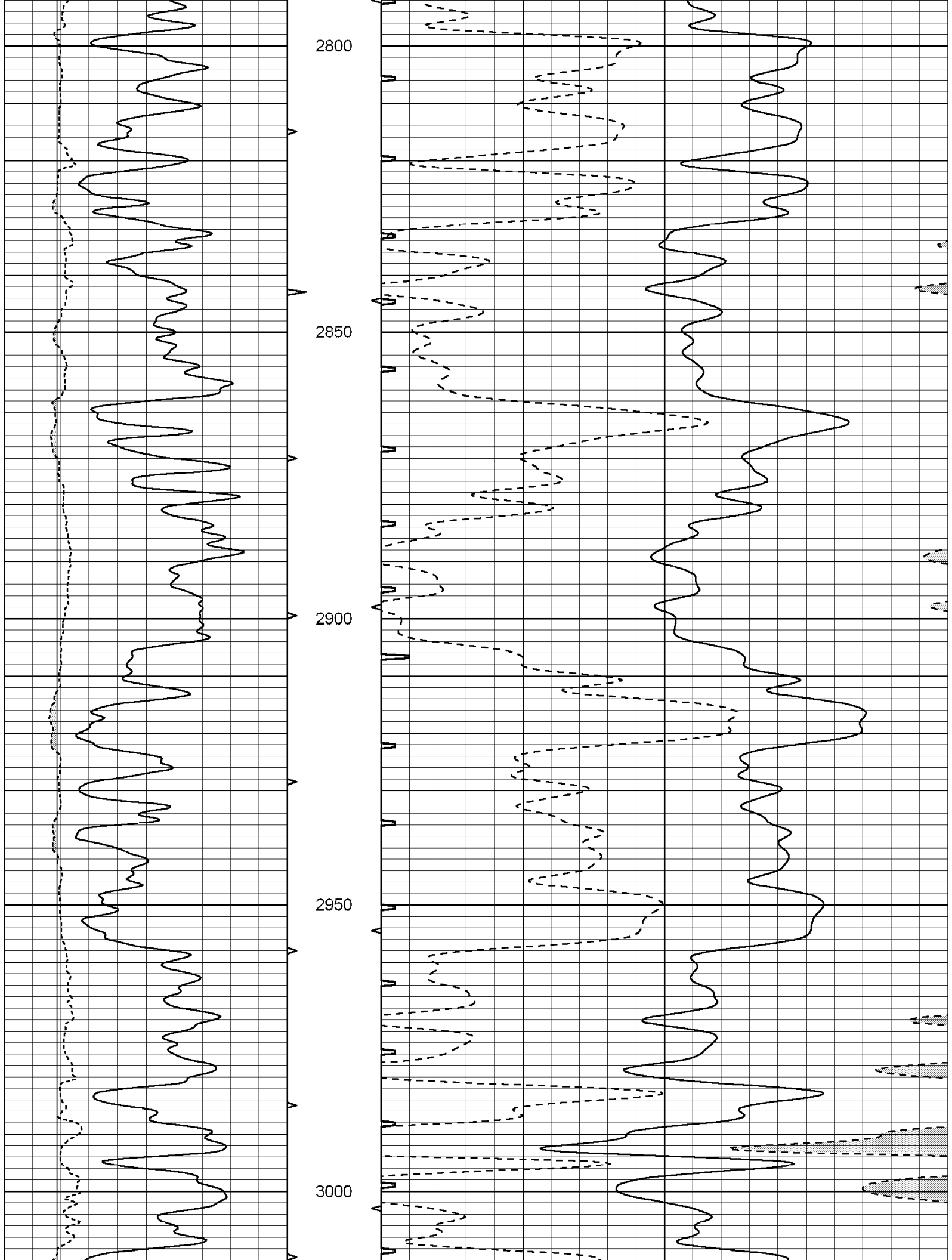


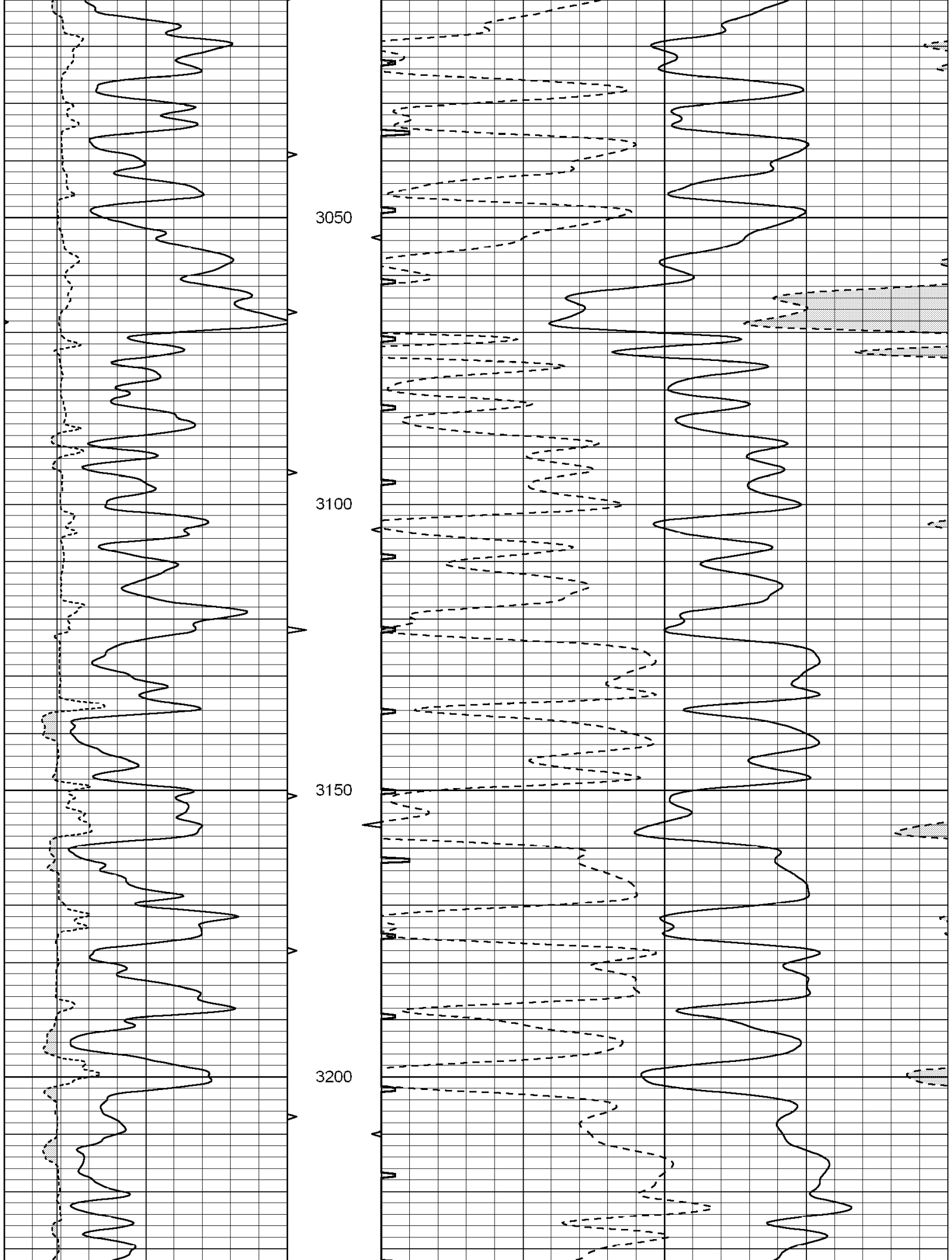


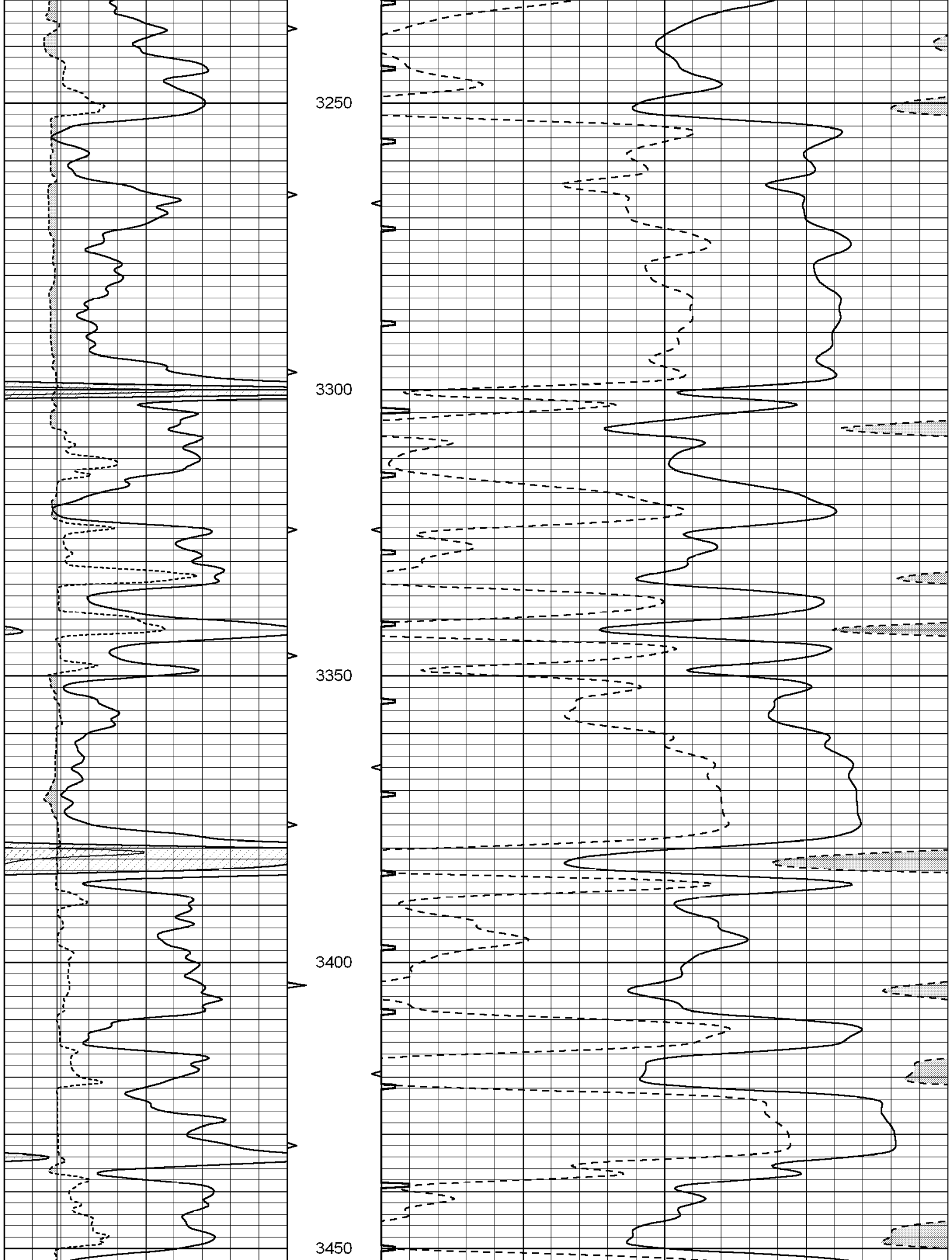


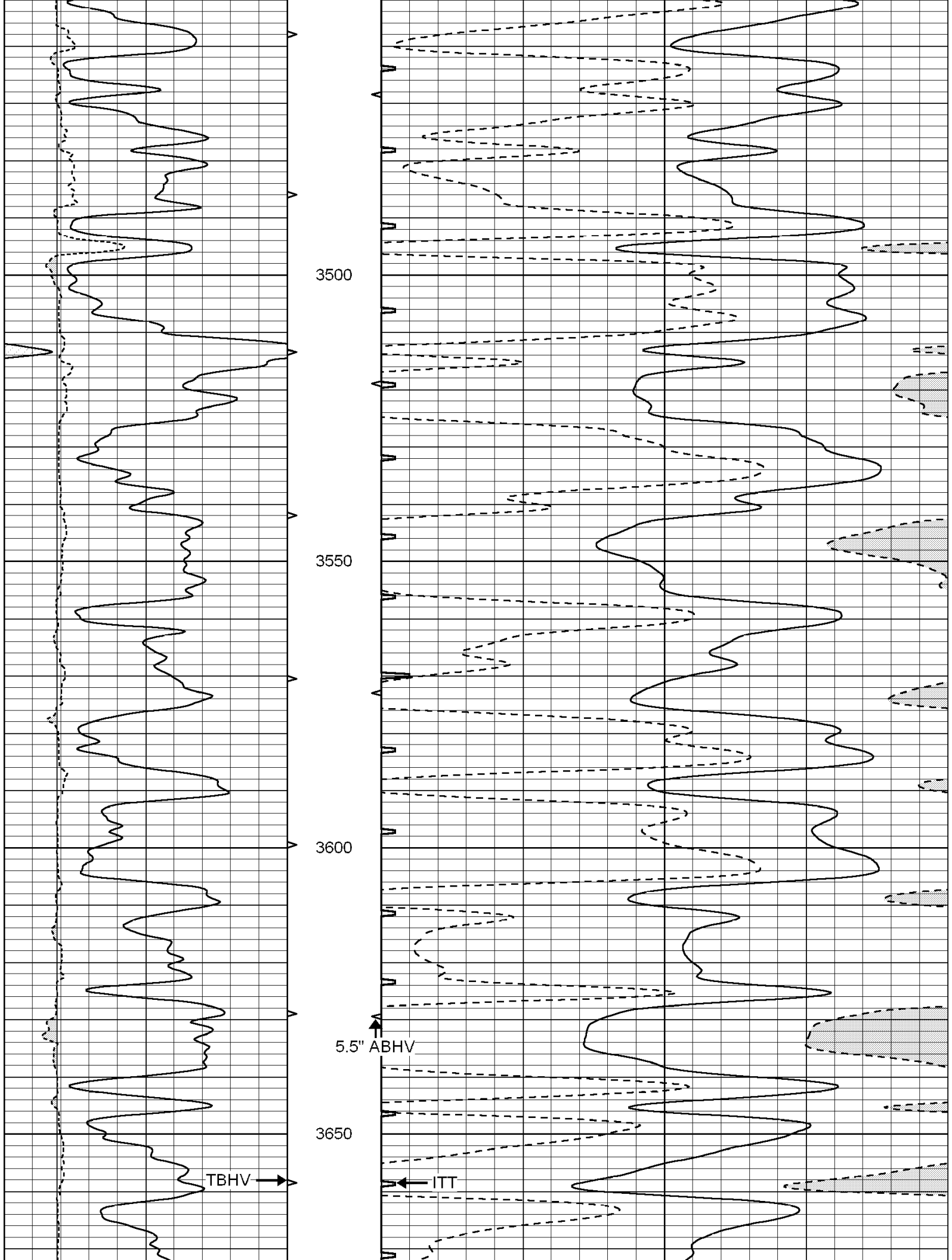


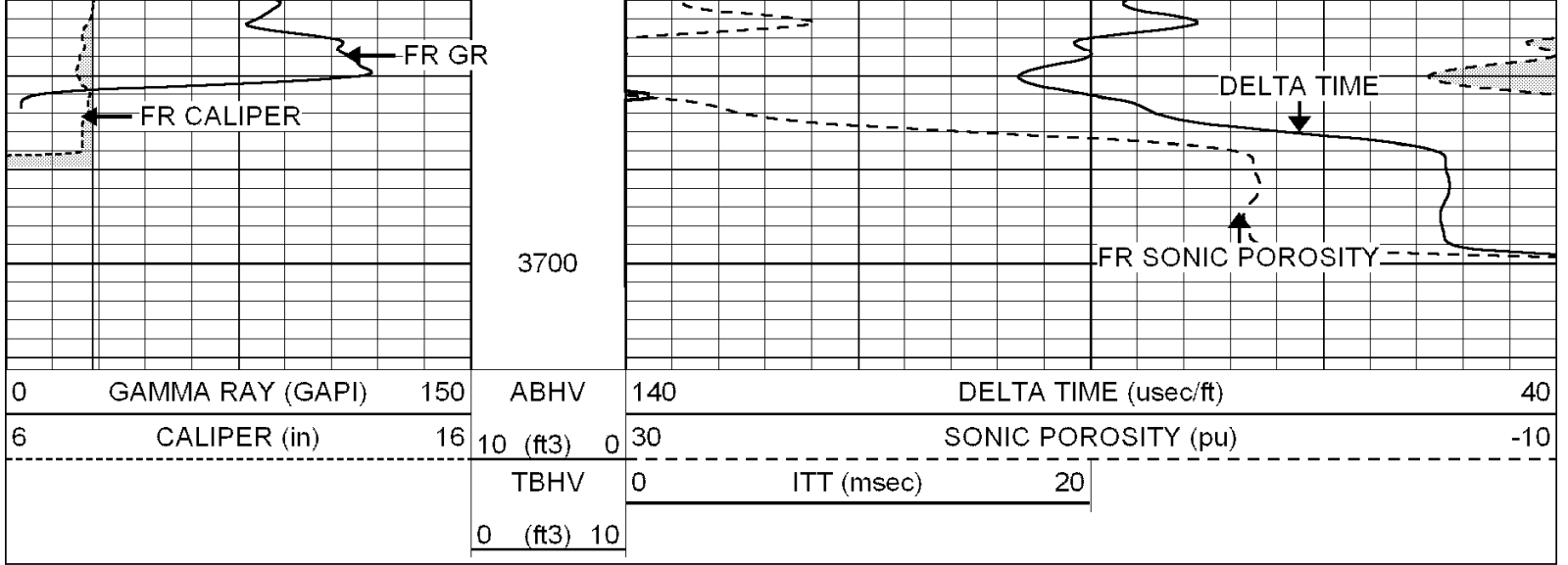












SUPERIOR
Hays,
Kansas

REPEAT SECTION

Database File: 004827ddn.db
 Dataset Pathname: pass6.6
 Presentation Format: slt
 Dataset Creation: Thu Mar 04 13:08:02 2010 by Calc Open-Cased 060407
 Charted by: Depth in Feet scaled 1:240

