



**SUPERIOR**  
Hays,  
Kansas

**MICRO**  
LOG

Company I.A. OPERATING, INC.  
Well MADDY #4-1  
Field WILDCAT  
County NORTON  
State KANSAS

Company I.A. OPERATING, INC.  
Well MADDY #4-1  
Field WILDCAT  
County NORTON State KANSAS

Location: API #: 15-137-20512-0000  
2060' FSL & 2310' FWL  
SEC 4 TWP 3S RGE 24W  
Permanent Datum GROUND LEVEL Elevation 2425  
Log Measured From KELLY BUSHING 5' A.G.L.  
Drilling Measured From KELLY BUSHING  
Other Services  
CDL/CNL  
DIL/SONIC  
Elevation  
K.B. 2430  
D.F. 2428  
G.L. 2425

Date	3/4/10		
Run Number	TWO		
Depth Driller	3720		
Depth Logger	3708		
Bottom Logged Interval	3685		
Top Log Interval	3000		
Casing Driller	8 5/8"@218'		
Casing Logger	218		
Bit Size	7 7/8"		
Type Fluid In Hole	CHEMICAL MUD	CHLORIDES 900 PPM	
Density / Viscosity	9.1/63		
pH / Fluid Loss	10.77.6		
Source of Sample	FLOWLINE		
Rm @ Meas. Temp	1.50@72F		
Rmf @ Meas. Temp	1.13@72F		
Rmc @ Meas. Temp	1.80@72F		
Source of Rmf / Rmc	MEASUREMENT		
Rm @ BHT	.956@113F		
Time Circulation Stopped	4 HOURS		
Time Logger on Bottom	10:15 A.M.		
Maximum Recorded Temperature	113F		
Equipment Number	0836		
Location	HAYS, KANSAS		
Recorded By	JEFF LUEBBERS		
Witnessed By	STEVE MILLER		

<<< Fold Here >>>

All interpretations are opinions based on inferences from electrical or other measurements and we cannot and do not guarantee the accuracy or correctness of any interpretation, and we shall not, except in the case of gross or willful negligence on our part, be liable or responsible for any loss, costs, damages, or expenses incurred or sustained by anyone resulting from any interpretation made by any of our officers, agents or employees. These interpretations are also subject to our general terms and conditions set out in our current Price Schedule.

**Comments**

THANK YOU FOR USING SUPERIOR WELL SERVICE HAYS, KANSAS (785) 628-6395  
DIRECTIONS  
NORTON, KS. 8W. ON HWY 36 TO "RD. 8W", 1S. TO "RD. N", 1/2E., N. INTO

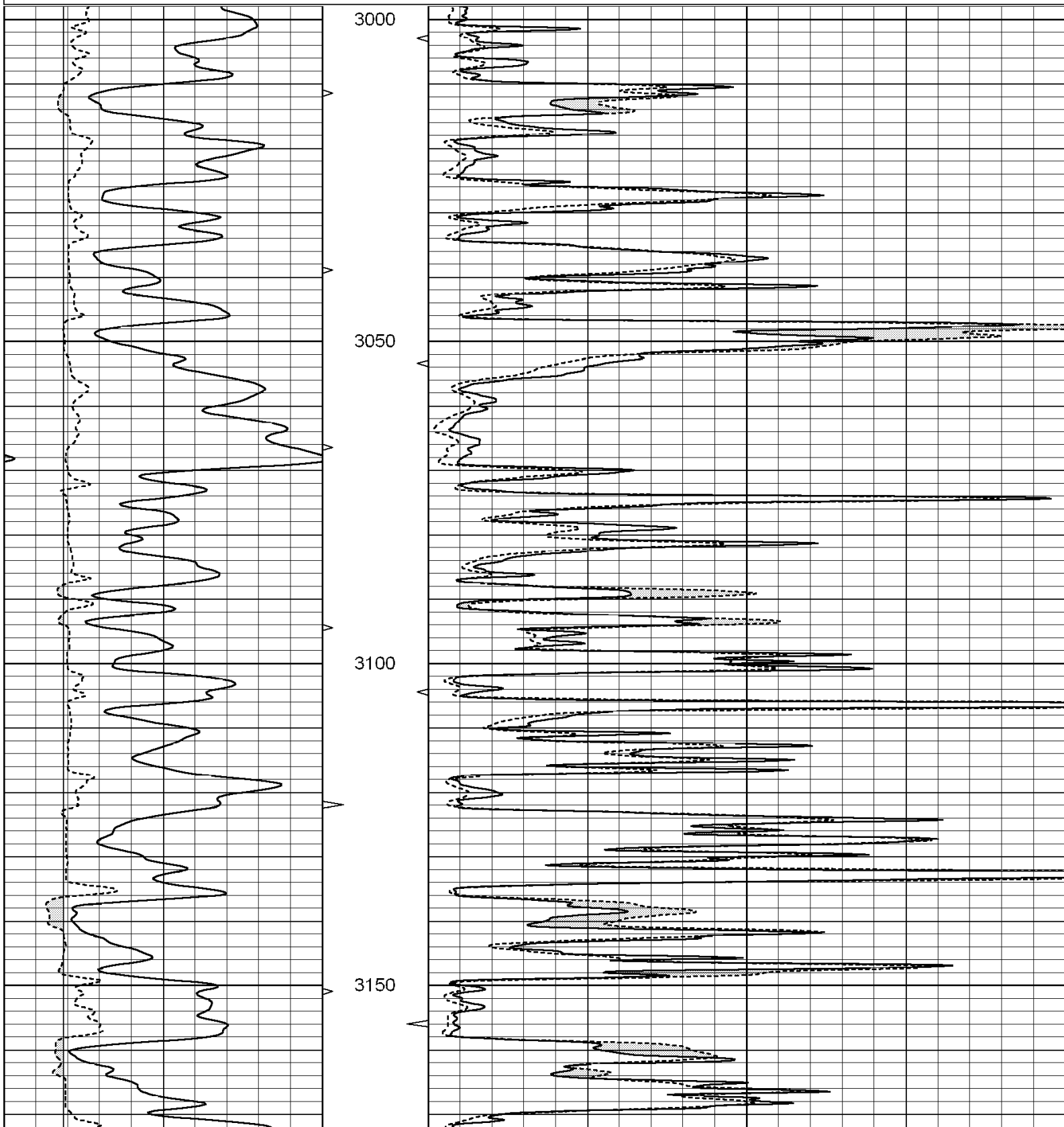


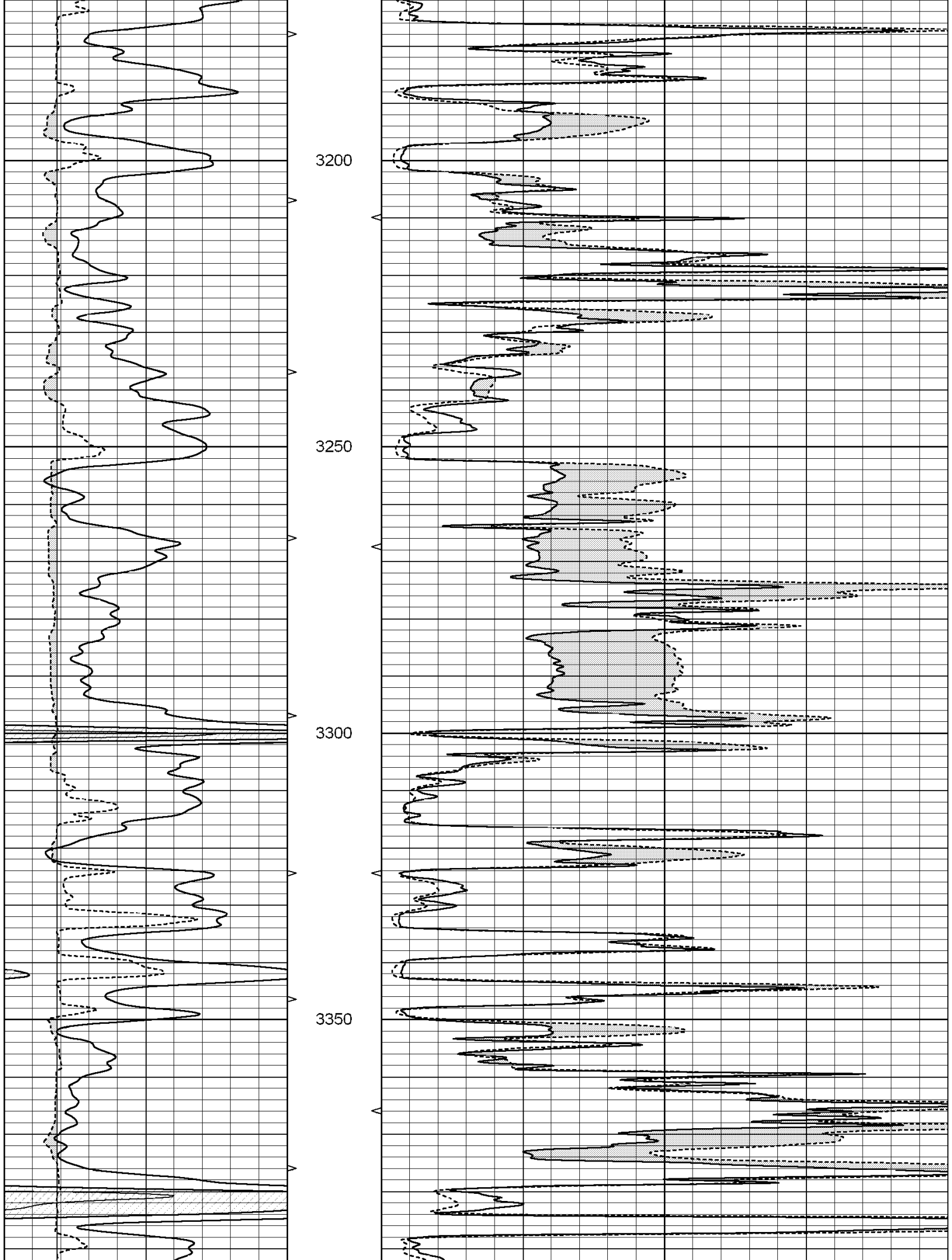
**SUPERIOR**  
Hays,  
Kansas

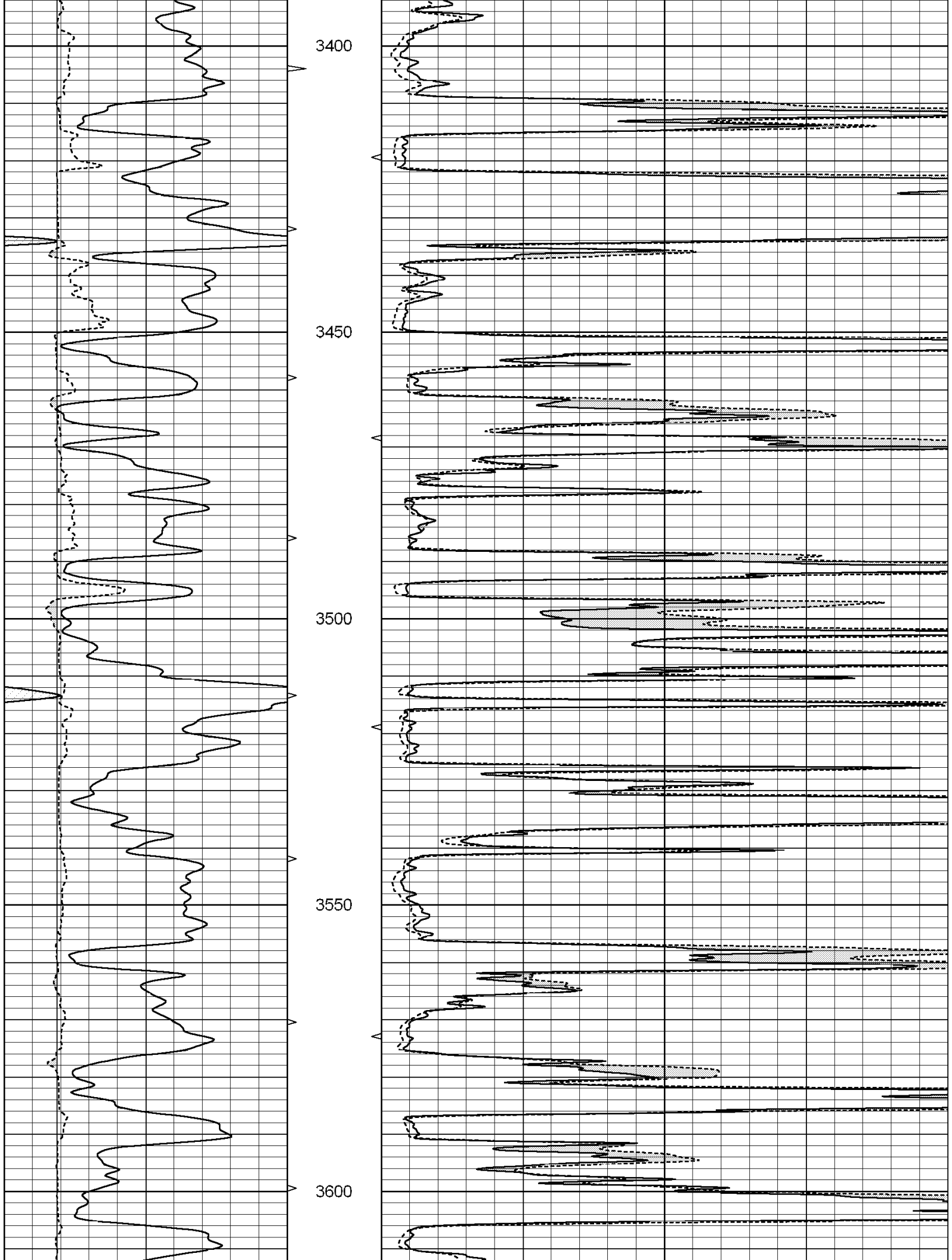
**MAIN SECTION**

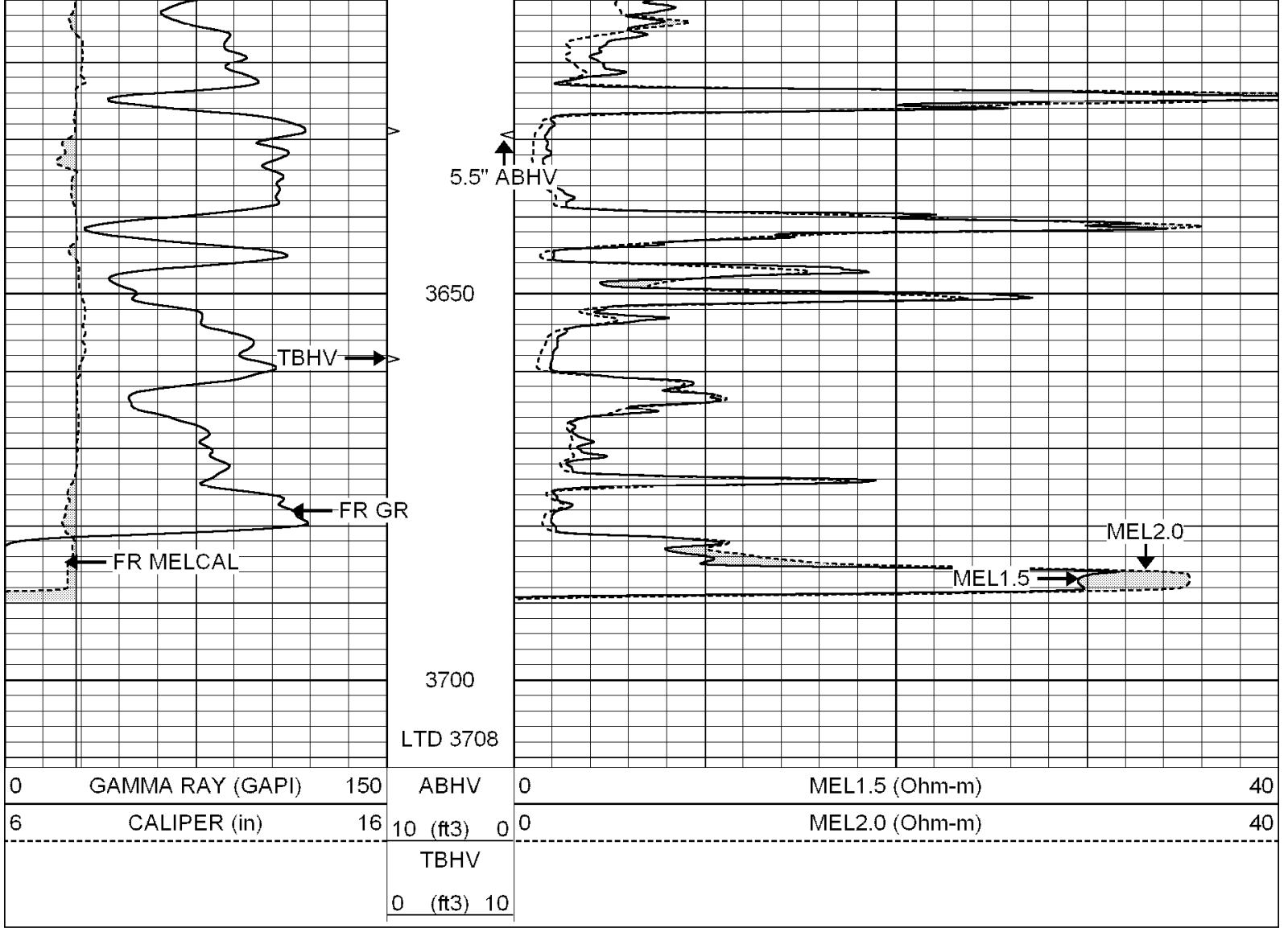
Database File: 004827ddn.db  
 Dataset Pathname: pass7.3  
 Presentation Format: micro  
 Dataset Creation: Thu Mar 04 13:22:59 2010 by Calc Open-Cased 060407  
 Charted by: Depth in Feet scaled 1:240

0	GAMMA RAY (GAPI)	150	ABHV	0	MEL1.5 (Ohm-m)	40
6	CALIPER (in)	16	10 (ft3) 0	0	MEL2.0 (Ohm-m)	40
			TBHV			
			0 (ft3) 10			







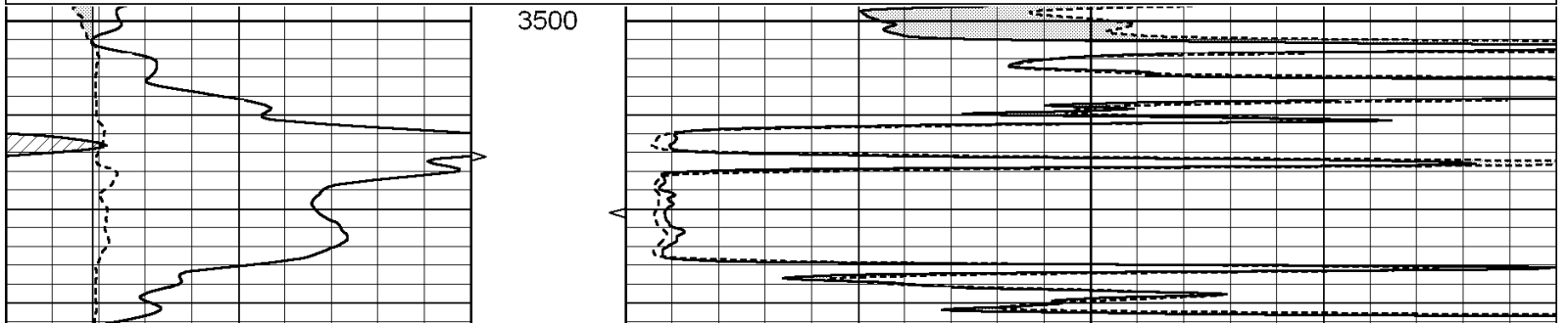


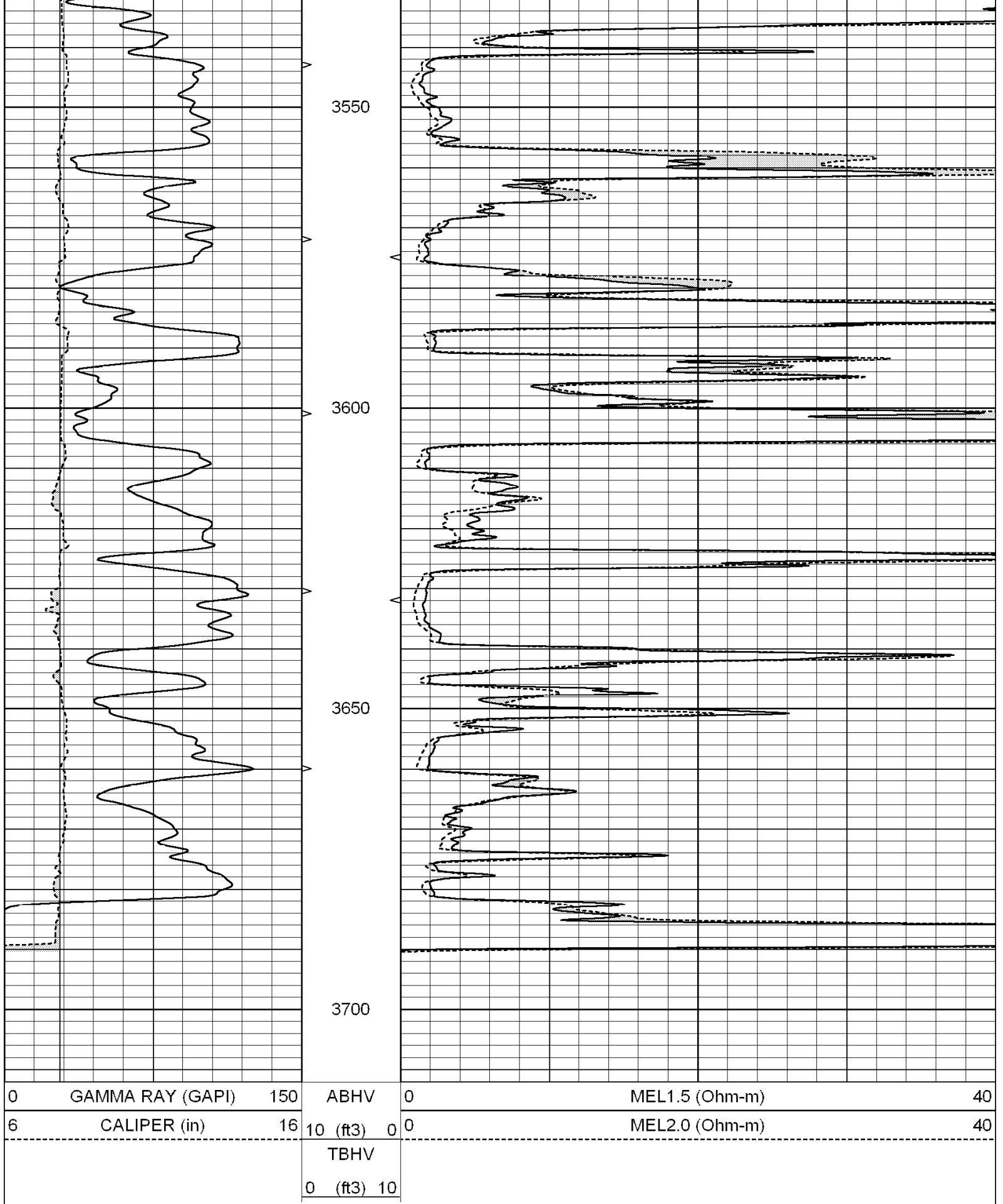
SUPERIOR  
Hays,  
Kansas

# REPEAT SECTION

Database File: 004827ddn.db  
 Dataset Pathname: pass6.6  
 Presentation Format: micro  
 Dataset Creation: Thu Mar 04 13:08:02 2010 by Calc Open-Cased 060407  
 Charted by: Depth in Feet scaled 1:240

0	GAMMA RAY (GAPI)	150	ABHV	0	MEL1.5 (Ohm-m)	40
6	CALIPER (in)	16	10 (ft3) 0	0	MEL2.0 (Ohm-m)	40
			TBHV			
			0 (ft3) 10			





### Calibration Report

Database File: 004827ddn.db  
 Dataset Pathname: pass7.3  
 Dataset Creation: Thu Mar 04 13:22:59 2010 by Calc Open-Cased 060407

MICRO Calibration Report

Serial Number: MICRO5  
 Tool Model: PROBE  
 Performed: Thu Mar 04 12:47:25 2010

Caliper Calibration: Gain=3.134      Offset=0.254

	Low Cal	High Cal
References	6.800	14.000
Readings	2.089	4.386

1.5" Calibration: Gain=30.000      Offset=-0.800

	Low Cal	High Cal
References	0.000	20.000
Readings	0.008	0.991

2" Calibration: Gain=40.000      Offset=-2.000

	Low Cal	High Cal
References	0.000	20.000
Readings	0.014	0.905

Gamma Ray Calibration Report

Serial Number: GR3  
 Tool Model: OPEN  
 Performed: Thu Mar 04 12:47:21 2010

Calibrator Value: 200.0      GAPI

Background Reading: 3.0      cps  
 Calibrator Reading: 186.0      cps

Sensitivity: 0.9500      GAPI/cps