



# Microresistivity Log

DIGITAL LOG (785) 625-3858

API No.	15-195-22641-00-00		
Company	Murfin Drilling Company, Inc.		
Well	Marley No. 1-7		
Field	Wildcat		
County	Trego	State	Kansas
Location	1700' FNL & 400' FEL		
Sec: 7	Twp: 12 S	Rge: 24 W	
Permanent Datum	Ground Level	Elevation 2524	
Log Measured From	Kelly Bushing	5 Ft. Above Perm. Datum	
Drilling Measured From	Kelly Bushing	K.B. 2529	
		D.F. 2524	
		G.L. 2524	
		Elevation	
		Other Services CNL/CDL DIL/BHCS	

Date	2/11/2010	
Run Number	Two	
Depth Driller	4200	
Depth Logger	4201	
Bottom Logged Interval	4200	
Top Log Interval	3500	
Casing Driller	8.625 @ 218	
Casing Logger	218	
Bit Size	7.875	
Type Fluid in Hole	Chemical	
Salinity, ppm CL	2400	
Density / Viscosity	9.1	50
pH / Fluid Loss	11.0	6.8
Source of Sample	Flowline	
Rm @ Meas. Temp	1.80 @	55
Rmf @ Meas. Temp	1.35 @	55
Rmc @ Meas. Temp	2.43 @	55
Source of Rmf / Rmc	Charts	
Rm @ BHT	0.84 @	118
Operating Rig Time	4 Hours	
Max Rec. Temp. F	118	
Equipment Number	15	
Location	Hays	
Recorded By	B. Becker	
Witnessed By	Paul Gunzelman	

<<< Fold Here >>>

All interpretations are opinions based on inferences from electrical or other measurements and we cannot and do not guarantee the accuracy or correctness of any interpretation, and we shall not, except in the case of gross or willful negligence on our part, be liable or responsible for any loss, costs, damages, or expenses incurred or sustained by anyone resulting from any interpretation made by any of our officers, agents or employees. These interpretations are also subject to our general terms and conditions set out in our current Price Schedule.

Comments

Thank you for using Log-Tech, Inc.  
 (785) 625-3858

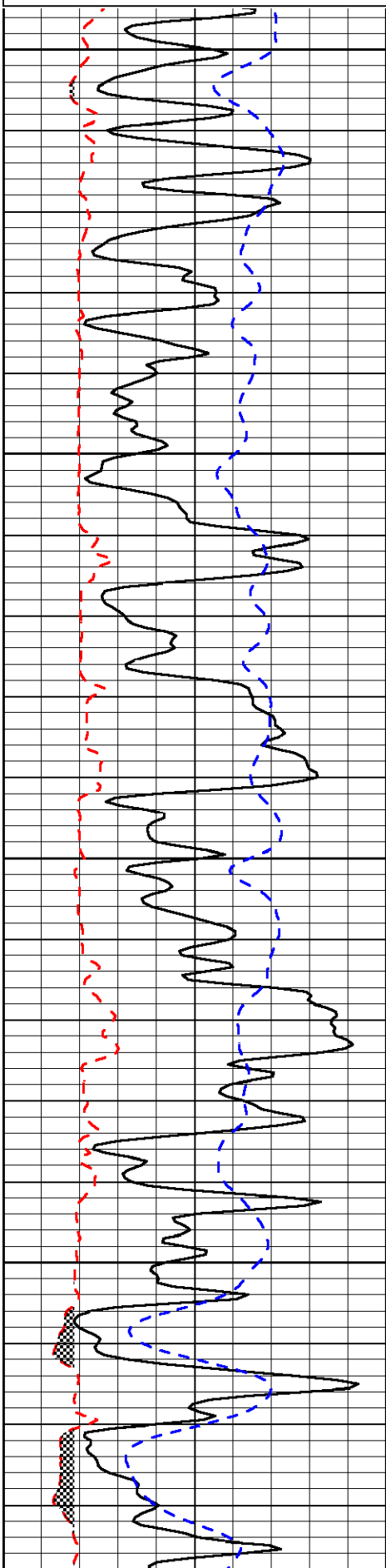
Wakeeney, Ks; West to Voda Rd;  
 1/3 North; West and South into

Database File: c:\warrior\data\murfin\_marley no. 1-7\murfin2hd.db  
 Dataset Pathname: DIL/murfstk  
 Presentation Format: micro  
 Dataset Creation: Fri Feb 12 02:02:25 2010  
 Charted by: Depth in Feet scaled 1:240

0	Gamma Ray	150
6	Micro Log Caliper (in)	16
-200	SP (MV)	0

0	Micro Inverse 1 X 1 (Ohm-m)	40
0	Micro Normal 2" (Ohm-m)	40
15000	Line Weight (lb)	0

LSPD  
(ft/min)

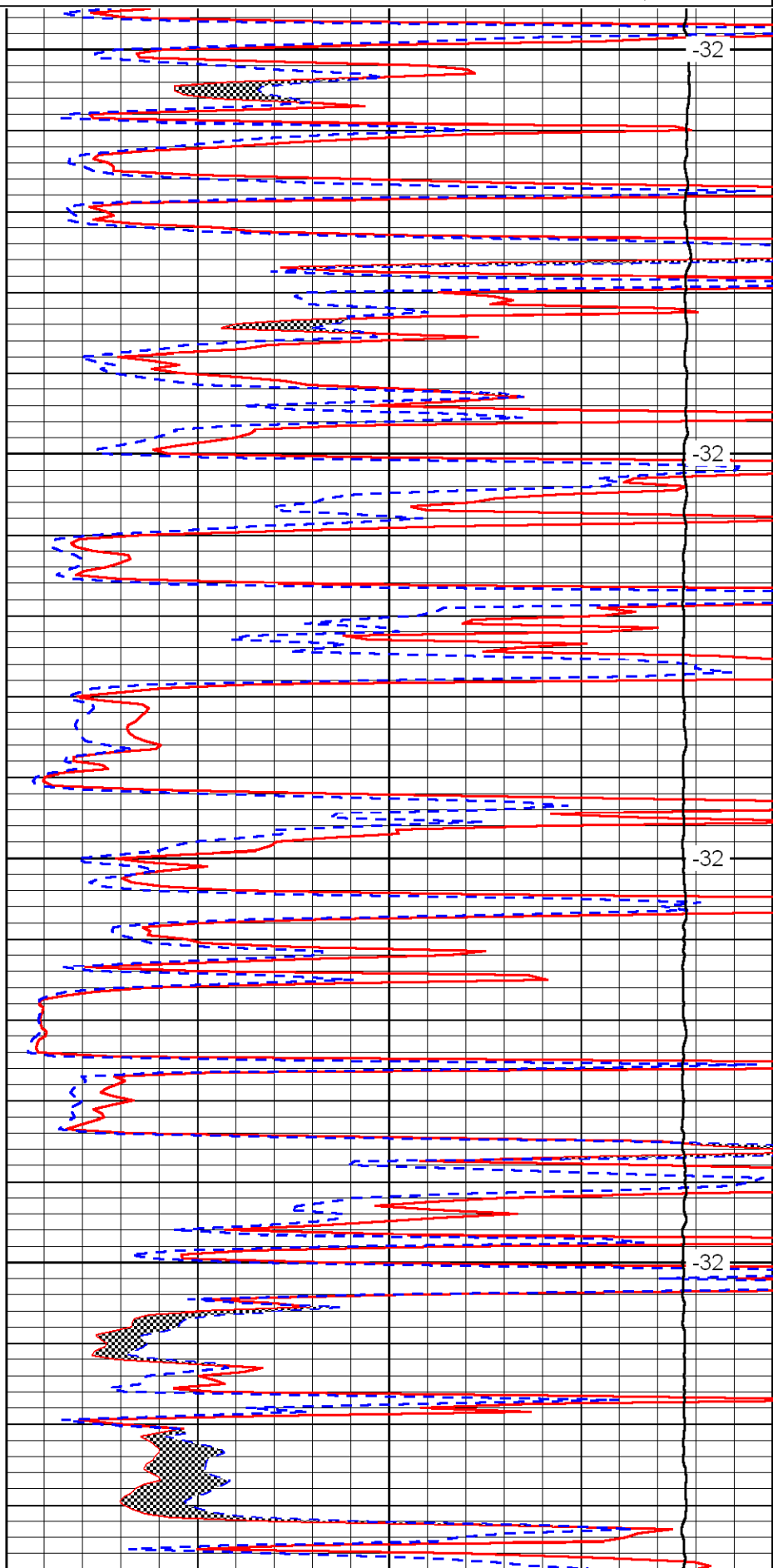


3500

3550

3600

3650

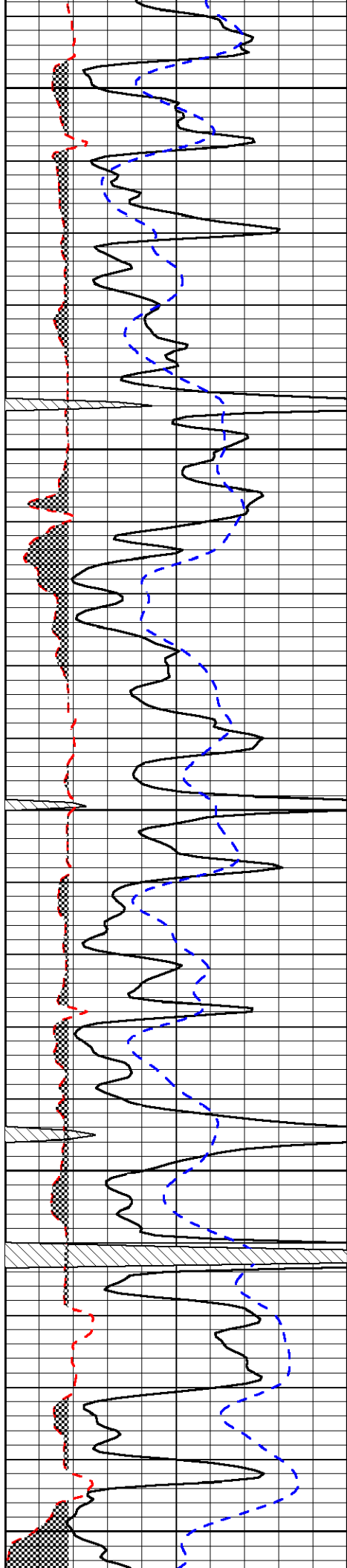


-32

-32

-32

-32



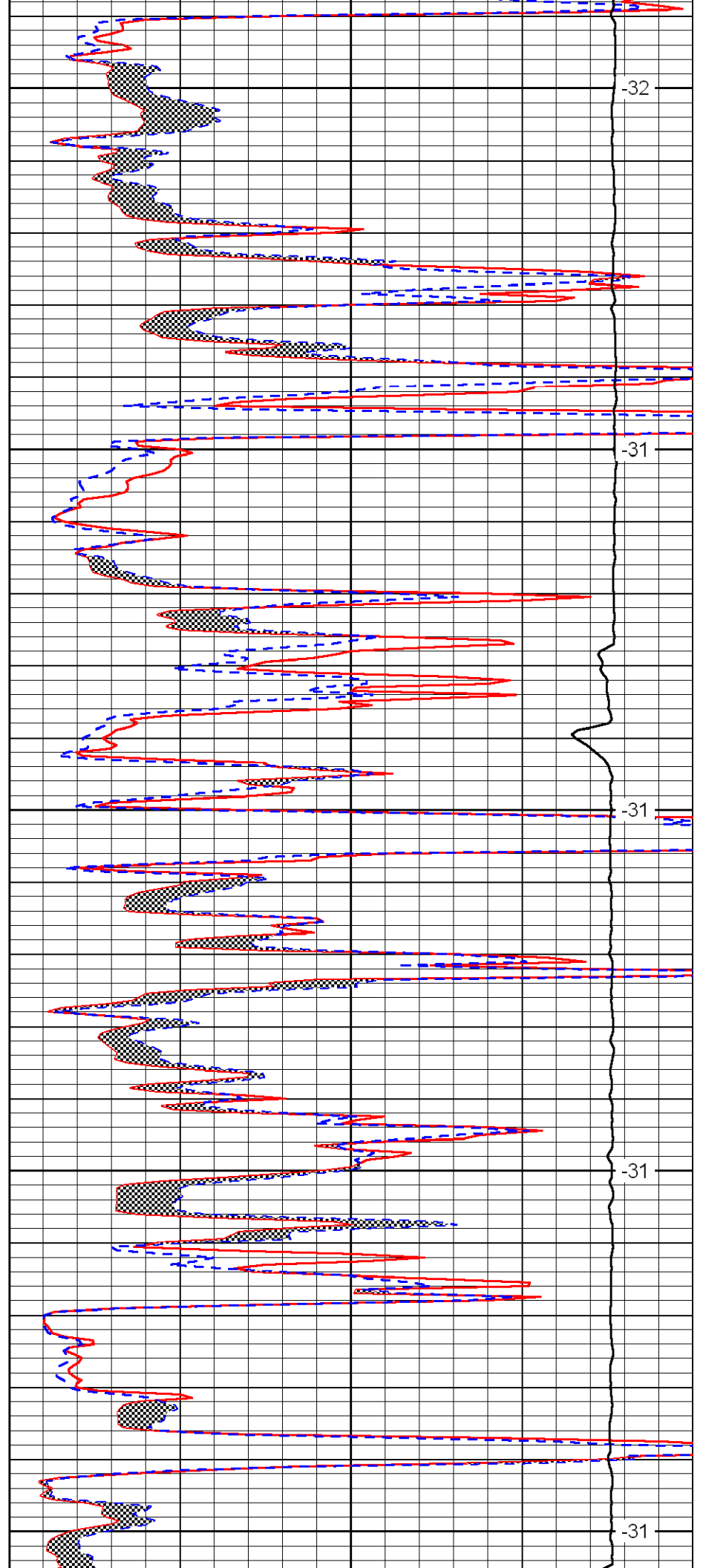
3700

3750

3800

3850

3900



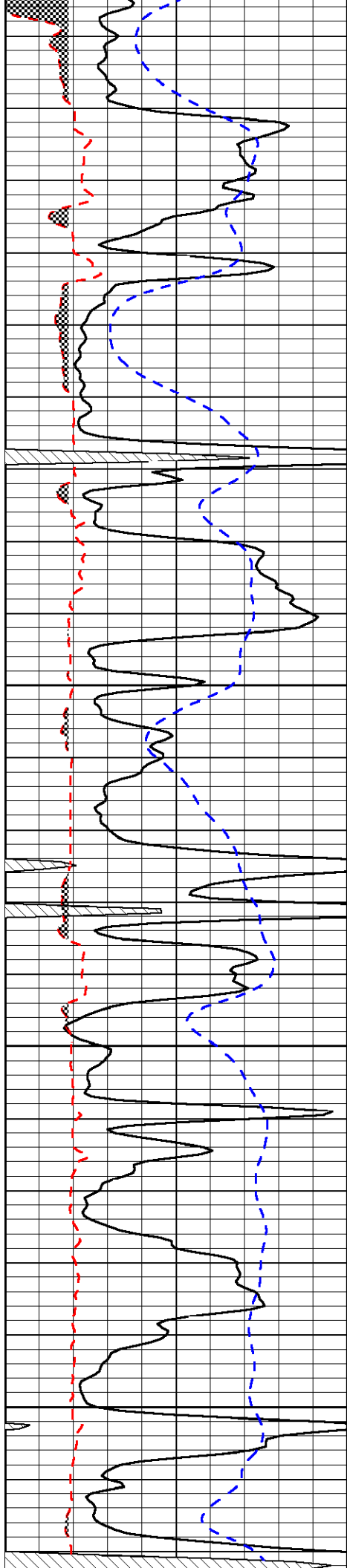
-32

-31

-31

-31

-31

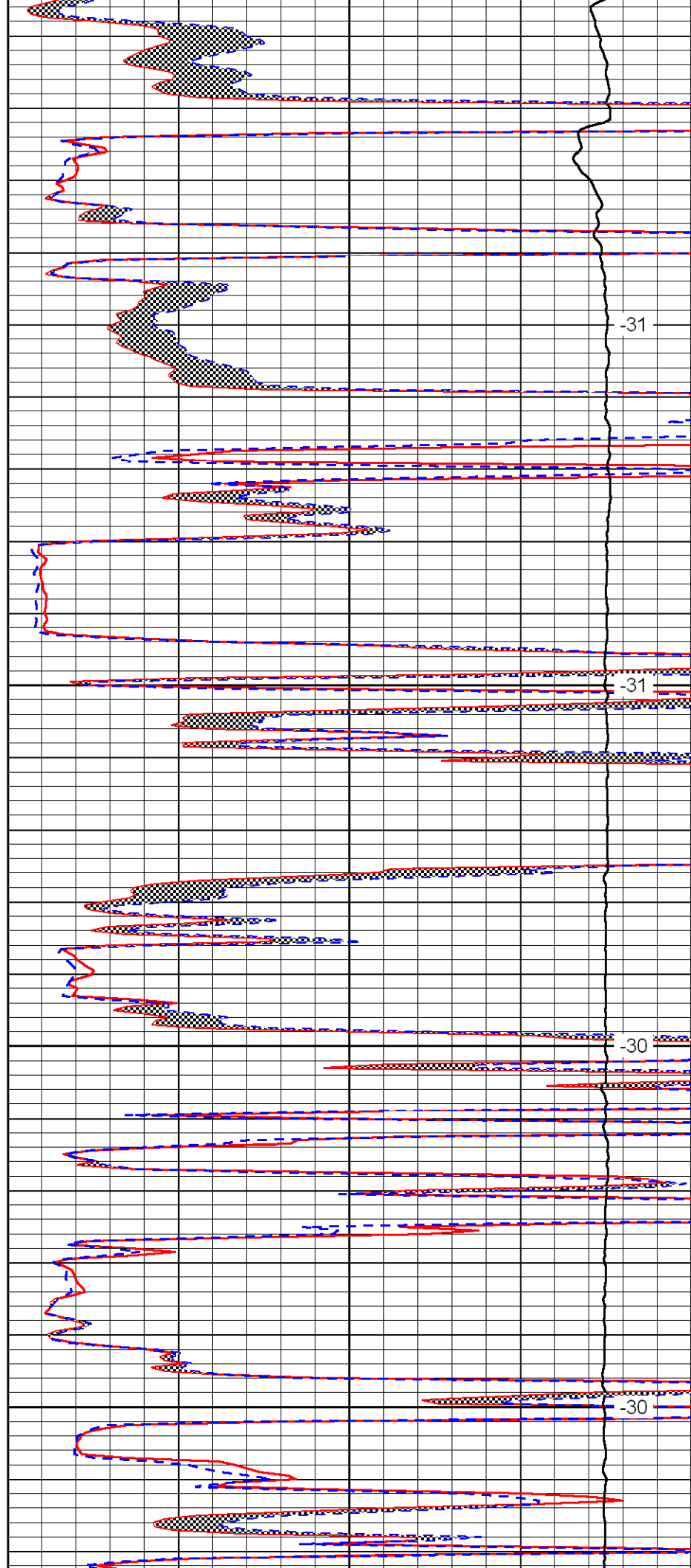


3950

4000

4050

4100

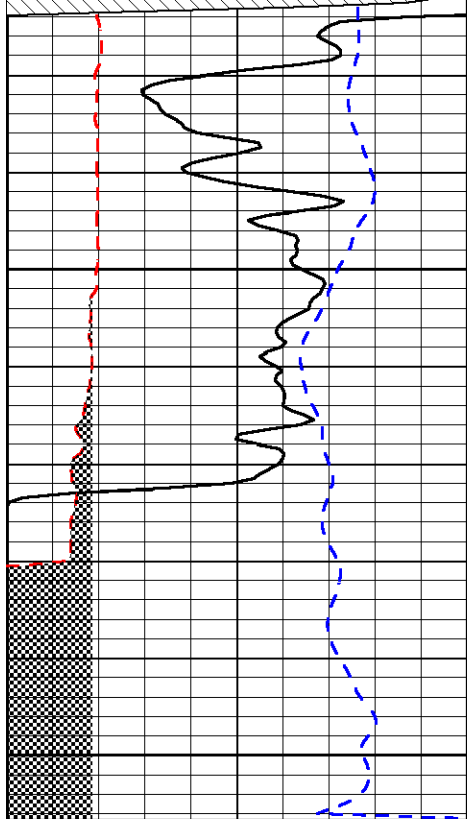


-31

-31

-30

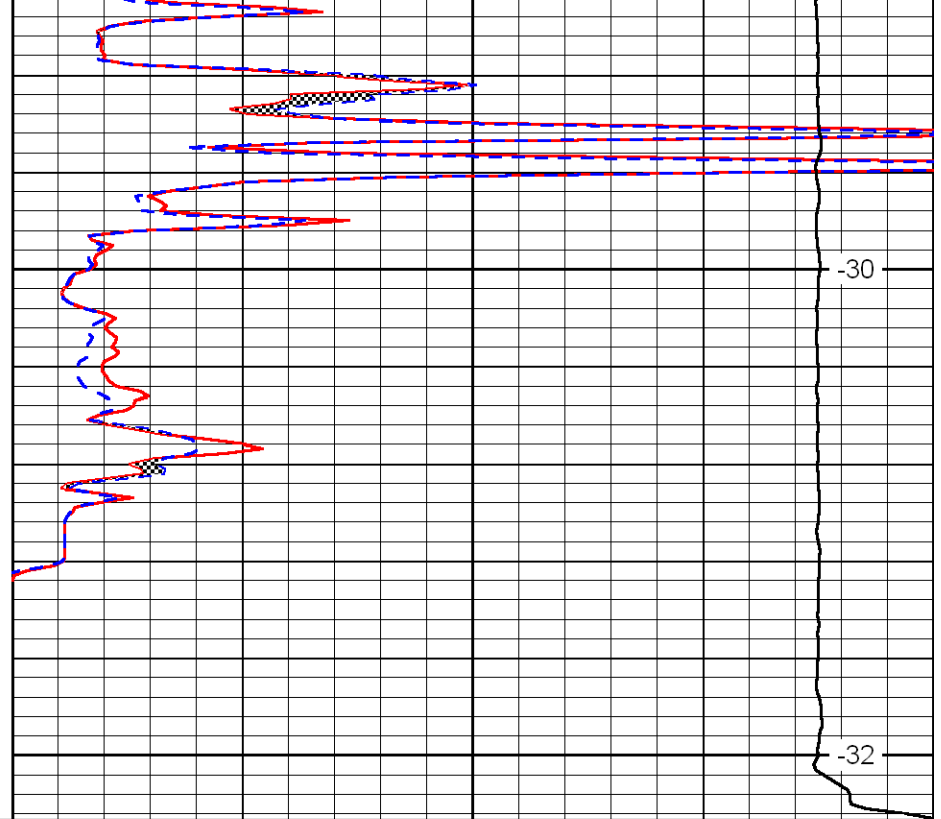
-30



4150

4200

0	Gamma Ray	150
6	Micro Log Caliper (in)	16
-200	SP (MV)	0



-30

-32

0	Micro Inverse 1 X 1 (Ohm-m)	40
0	Micro Normal 2' (Ohm-m)	40
15000	Line Weight (lb)	0

LSPD  
(ft/min)