



**Borehole Compensated
Sonic Log**

DIGITAL LOG (785) 625-3858

API No. 15-195-22641-00-00	Company Murfin Drilling Company, Inc.	Location 1700' FNL & 400' FEL	Other Services CNL/CDL MEL/DIL
Well Marley No. 1-7	County Trego		
Field Wildcat	State Kansas		
Sec: 7	Twp: 12 S	Rge: 24 W	Elevation K.B. 2529 D.F. G.L. 2524
Permanent Datum Log Measured From Drilling Measured From	Ground Level Kelly Bushing Kelly Bushing	Elevation 2524 5 Ft. Above Perm. Datum	

Date	2/11/2010
Run Number	Two
Type Log	BHC Sonic
Depth Driller	4200
Depth Logger	4201
Bottom Logged Interval	4190
Top Logged Interval	200
Type Fluid In Hole	Chemical
Salinity, PPM CL	2400
Density	9.1
Level	Full
Max. Rec. Temp. F	118
Operating Rig Time	4 Hours
Equipment -- Location	15 Hays
Recorded By	B. Becker
Witnessed By	Paul Gunzelman

Borehole Record				Casing Record			
Run No	Bit	From	To	Size	Wgt.	From	To
1	12.25	00	218	8.625	24#	00	218
2	7.875	218	4200				

<<< Fold Here >>>

All interpretations are opinions based on inferences from electrical or other measurements and we cannot and do not guarantee the accuracy or correctness of any interpretation, and we shall not, except in the case of gross or willful negligence on our part, be liable or responsible for any loss, costs, damages, or expenses incurred or sustained by anyone resulting from any interpretation made by any of our officers, agents or employees. These interpretations are also subject to our general terms and conditions set out in our current Price Schedule.

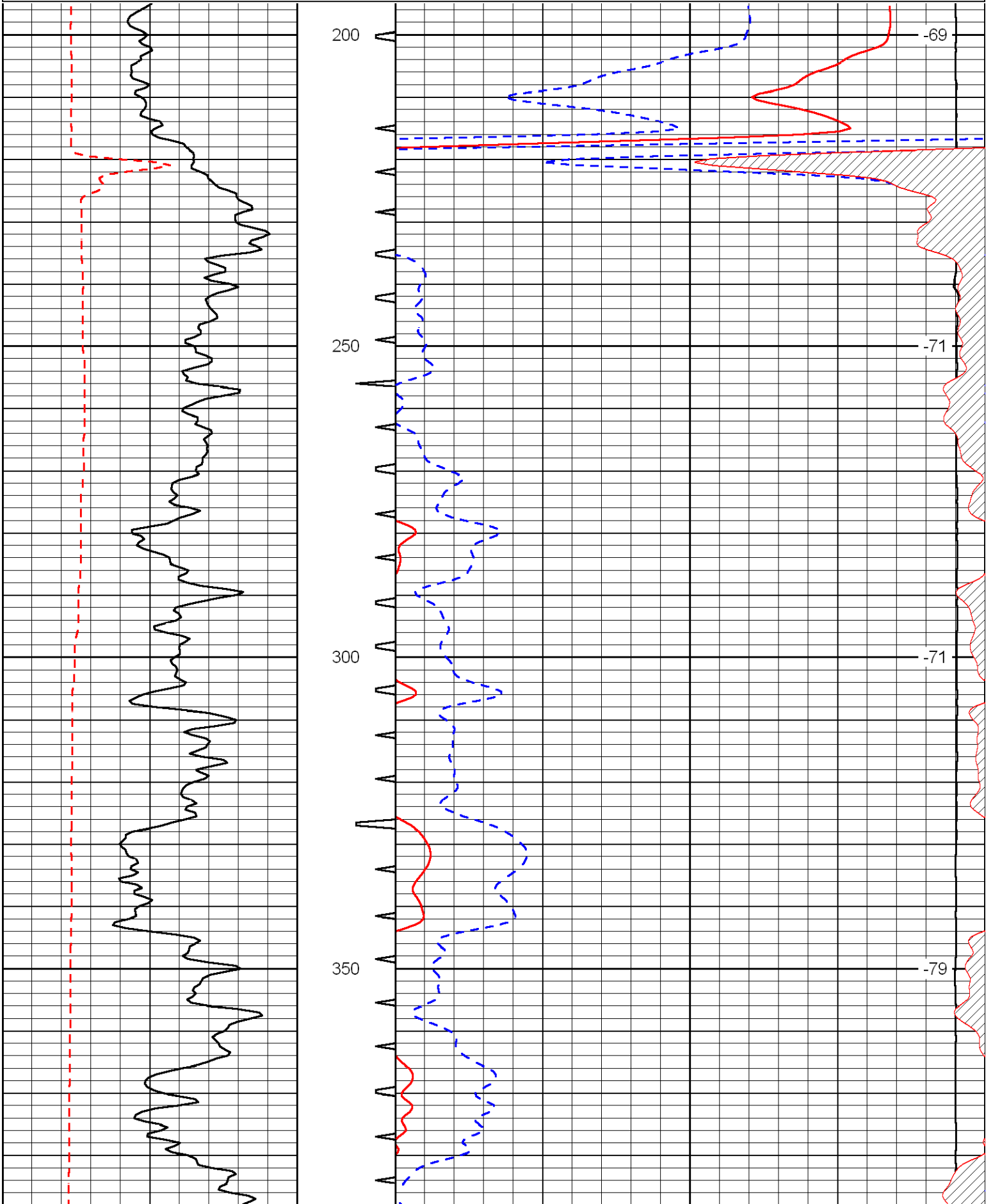
Comments

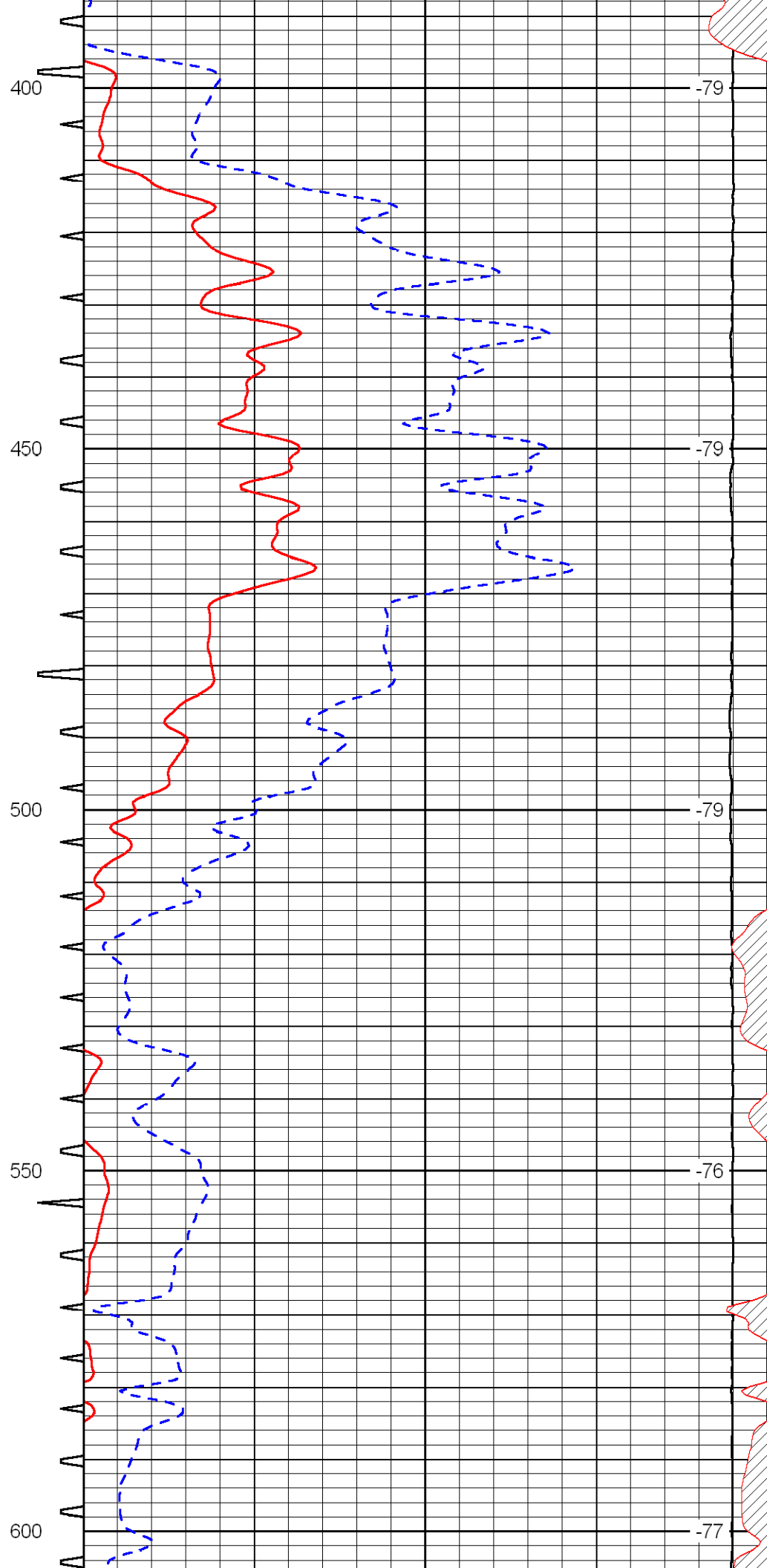
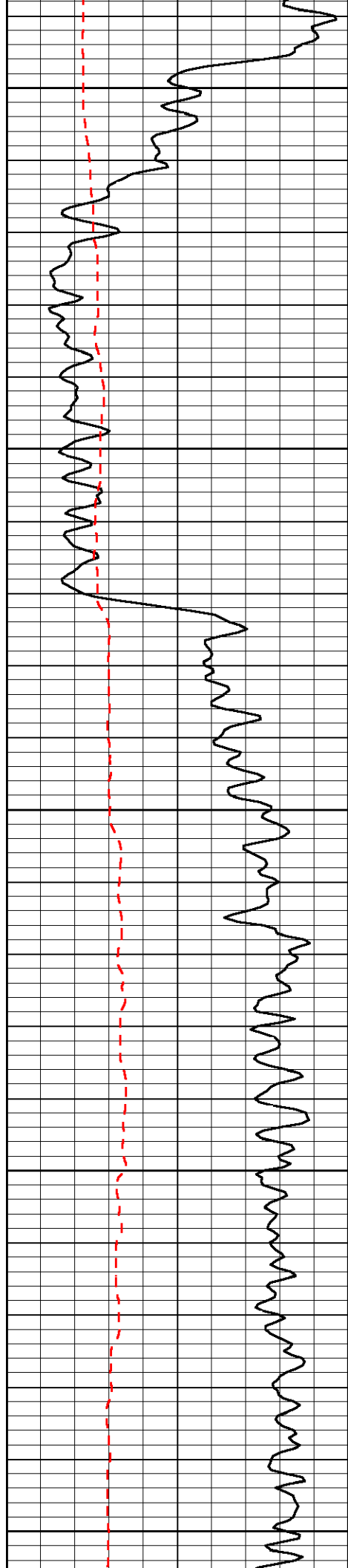
Thank you for using Log-Tech, Inc.
(785) 625-3858

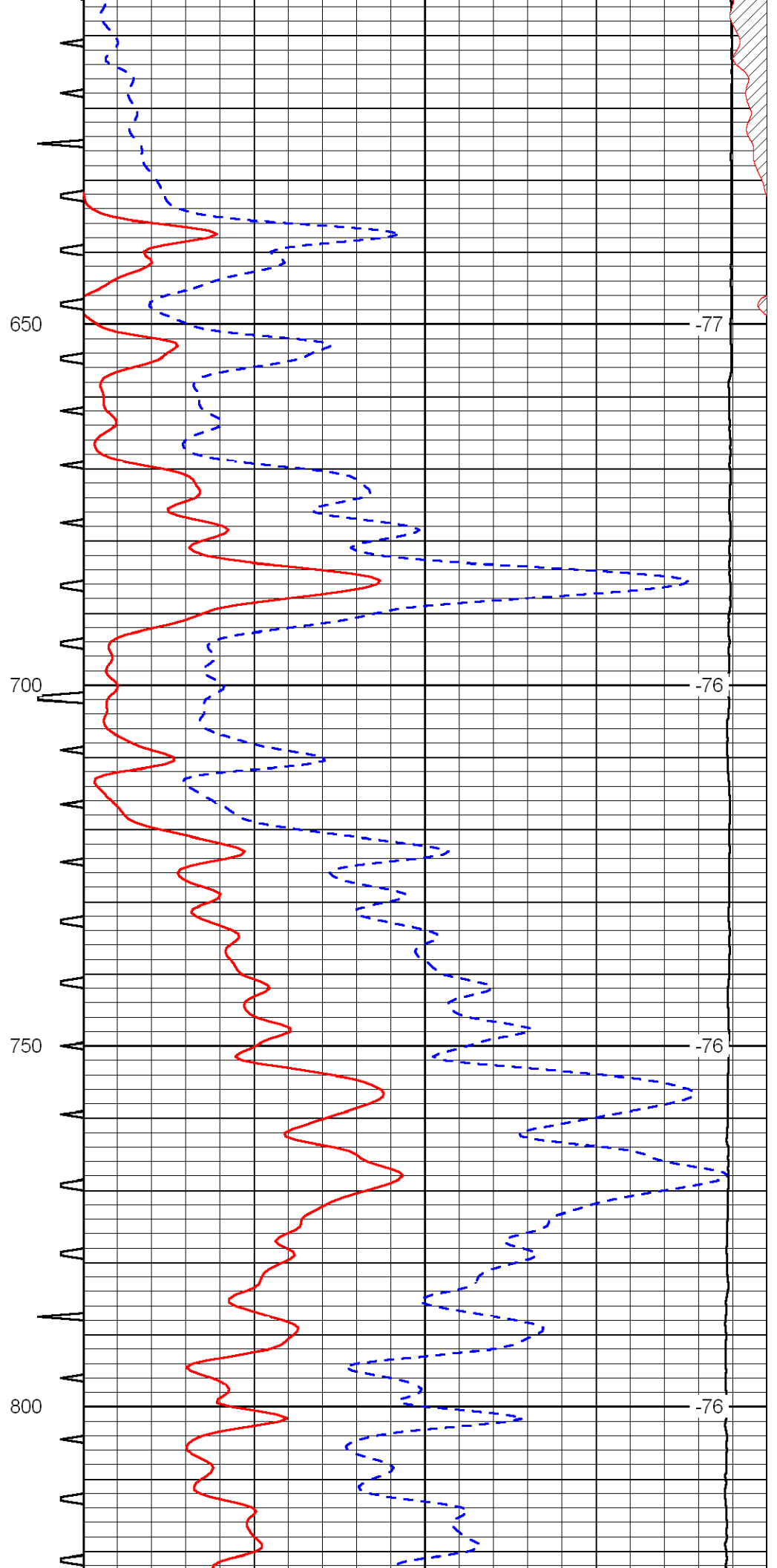
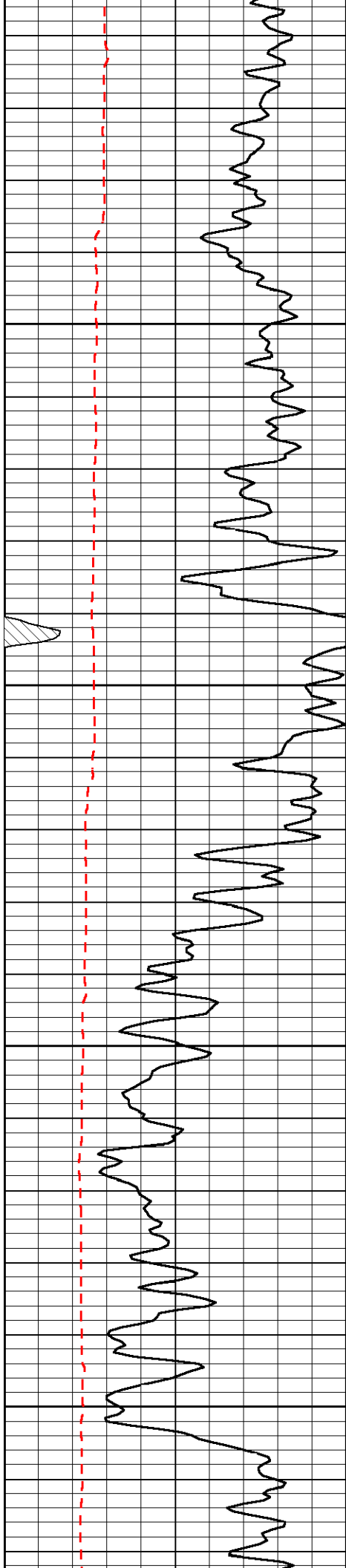
Wakeeney, Ks; West to Voda Rd;
1/3 North; West and South into

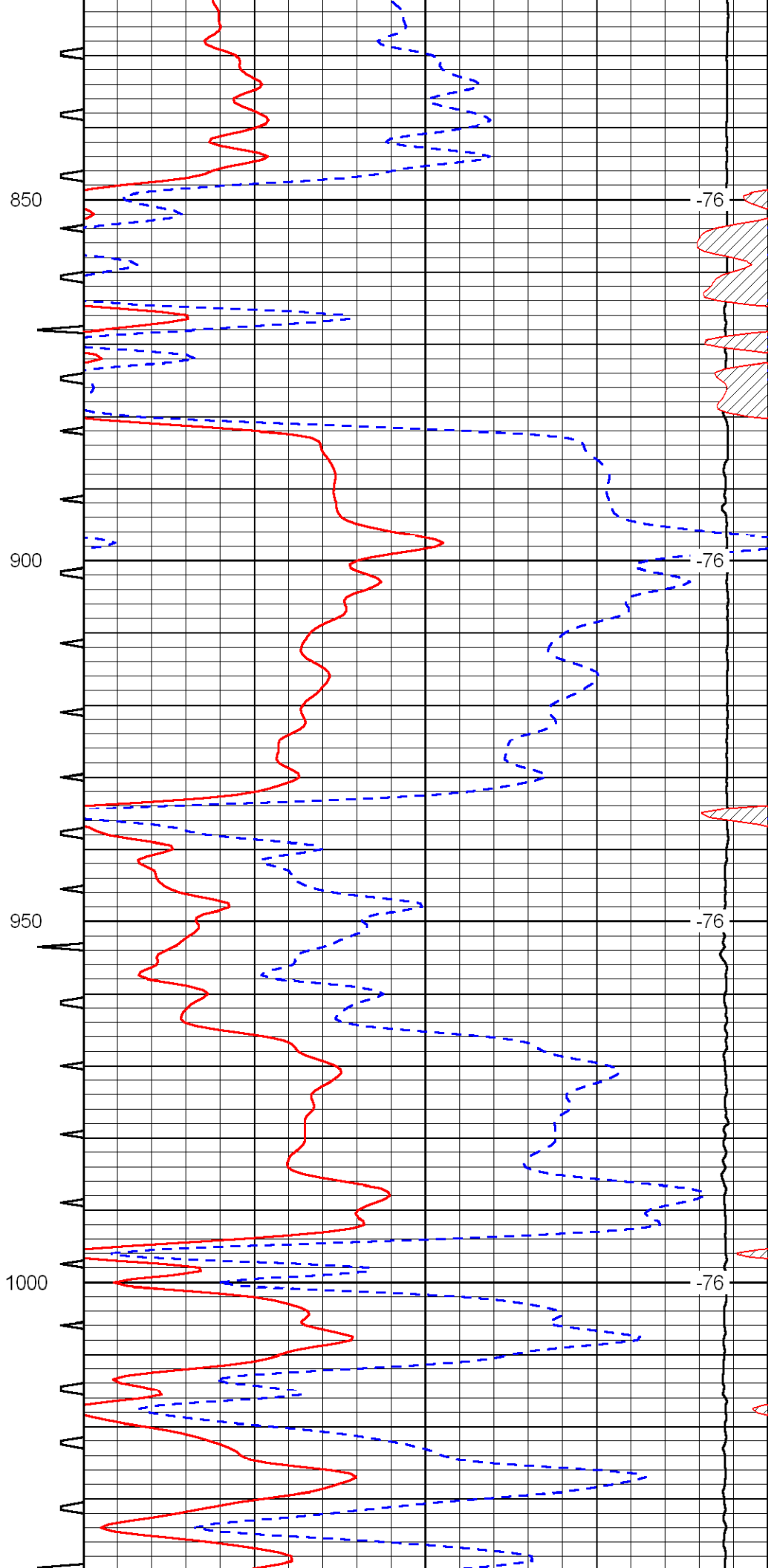
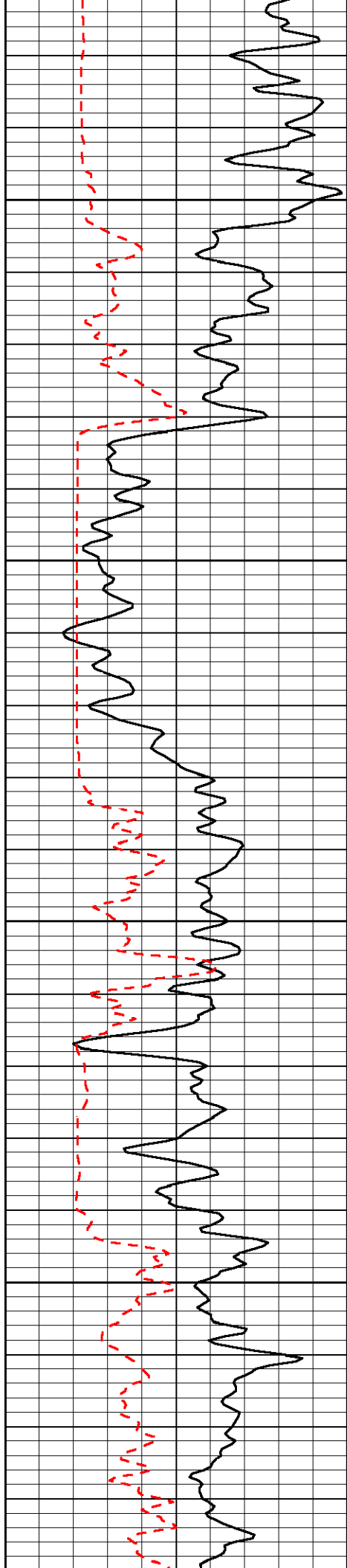
Database File: c:\warrior\data\murfin_marley no. 1-7\murfin2hd.db
 Dataset Pathname: DIL\murfstk
 Presentation Format: sonic
 Dataset Creation: Fri Feb 12 02:02:25 2010
 Charted by: Depth in Feet scaled 1:240

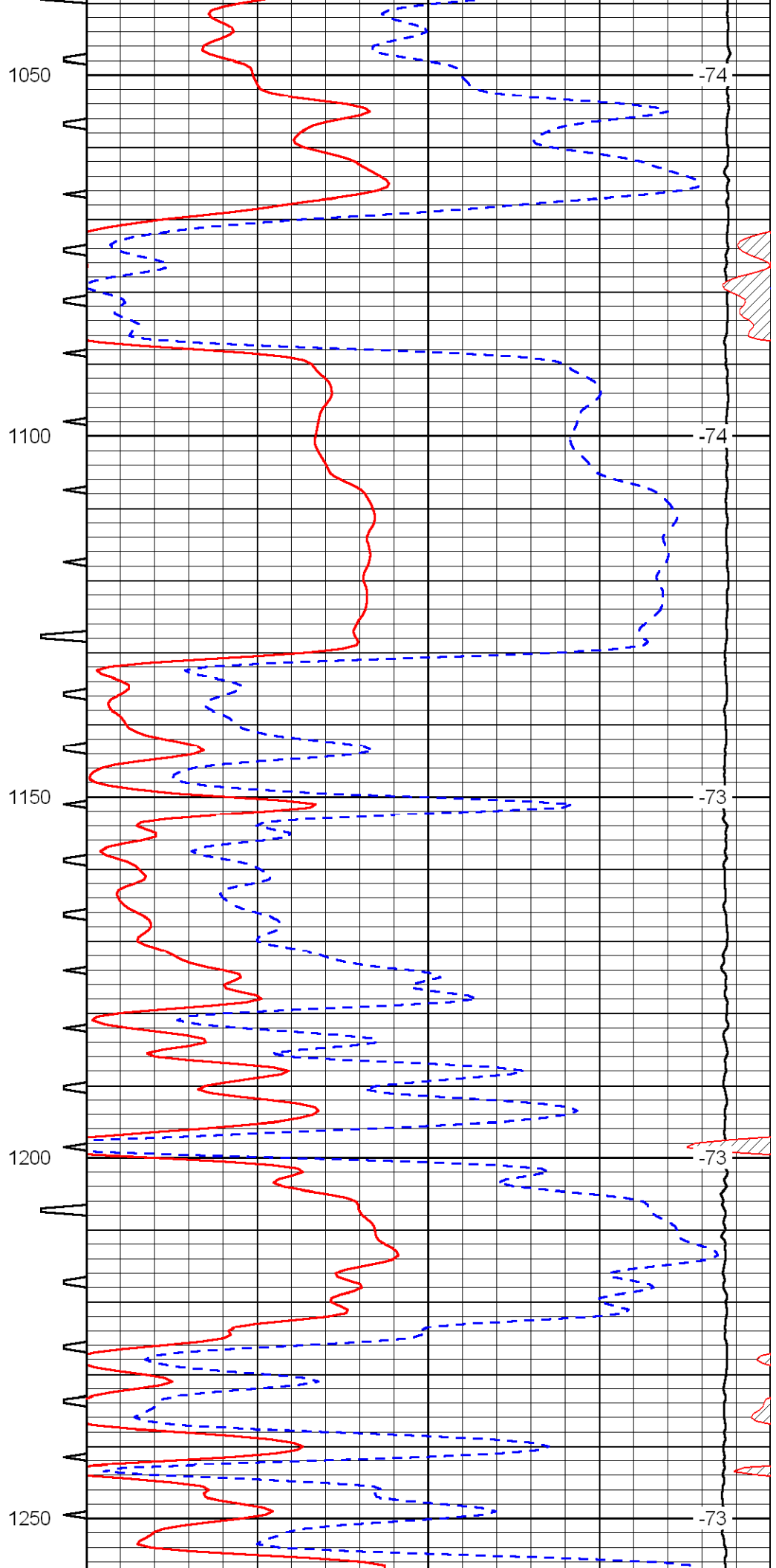
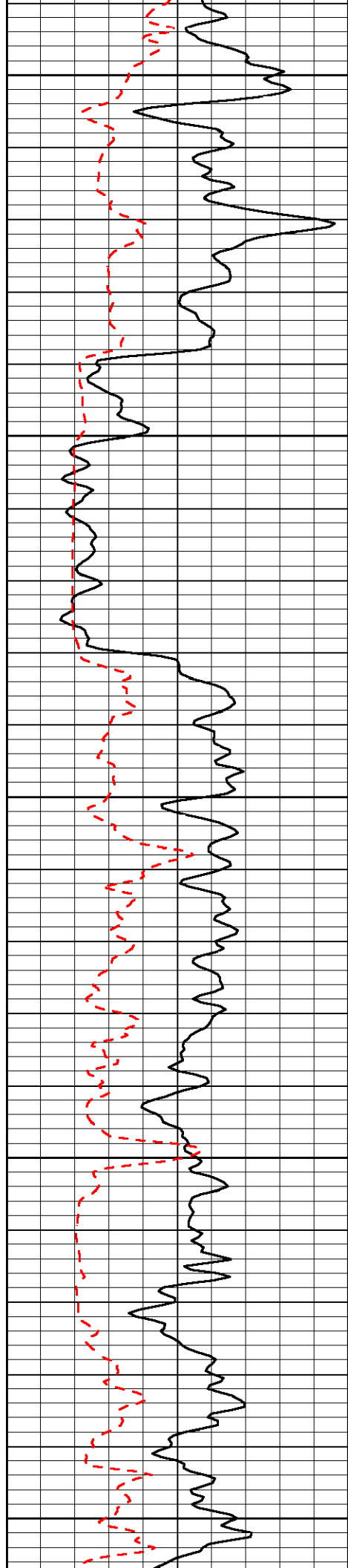
0	Gamma Ray	150	Sonic Int	140	Delta Time (usec/ft) (usec/ft)	40
150	Gamma Ray	300	5 (msec)	0	SPOR (pu)	-10
6	Caliper (in)	16		15000	LTEN (lb) (lb)	0
						LSPD (ft/min)

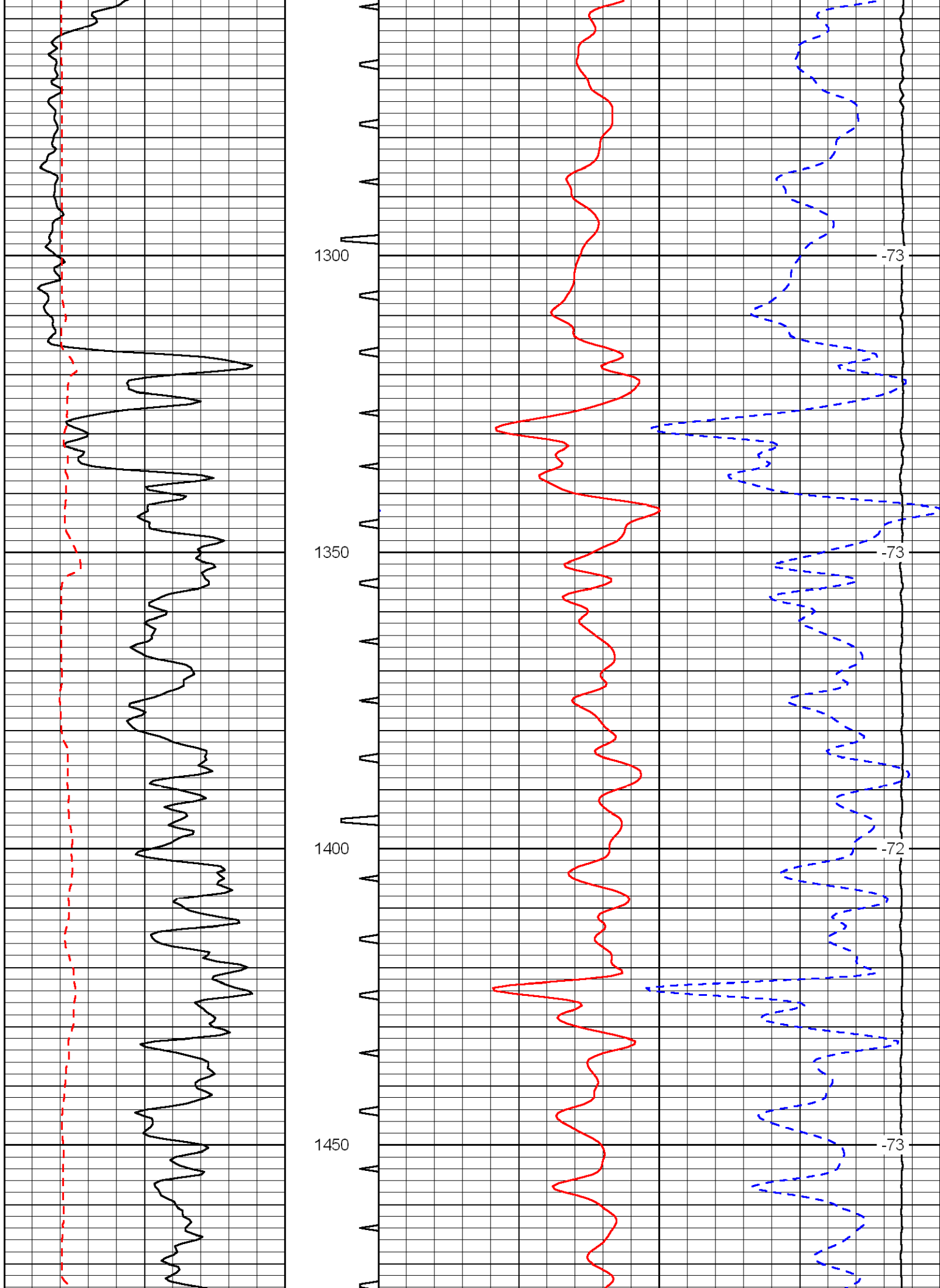


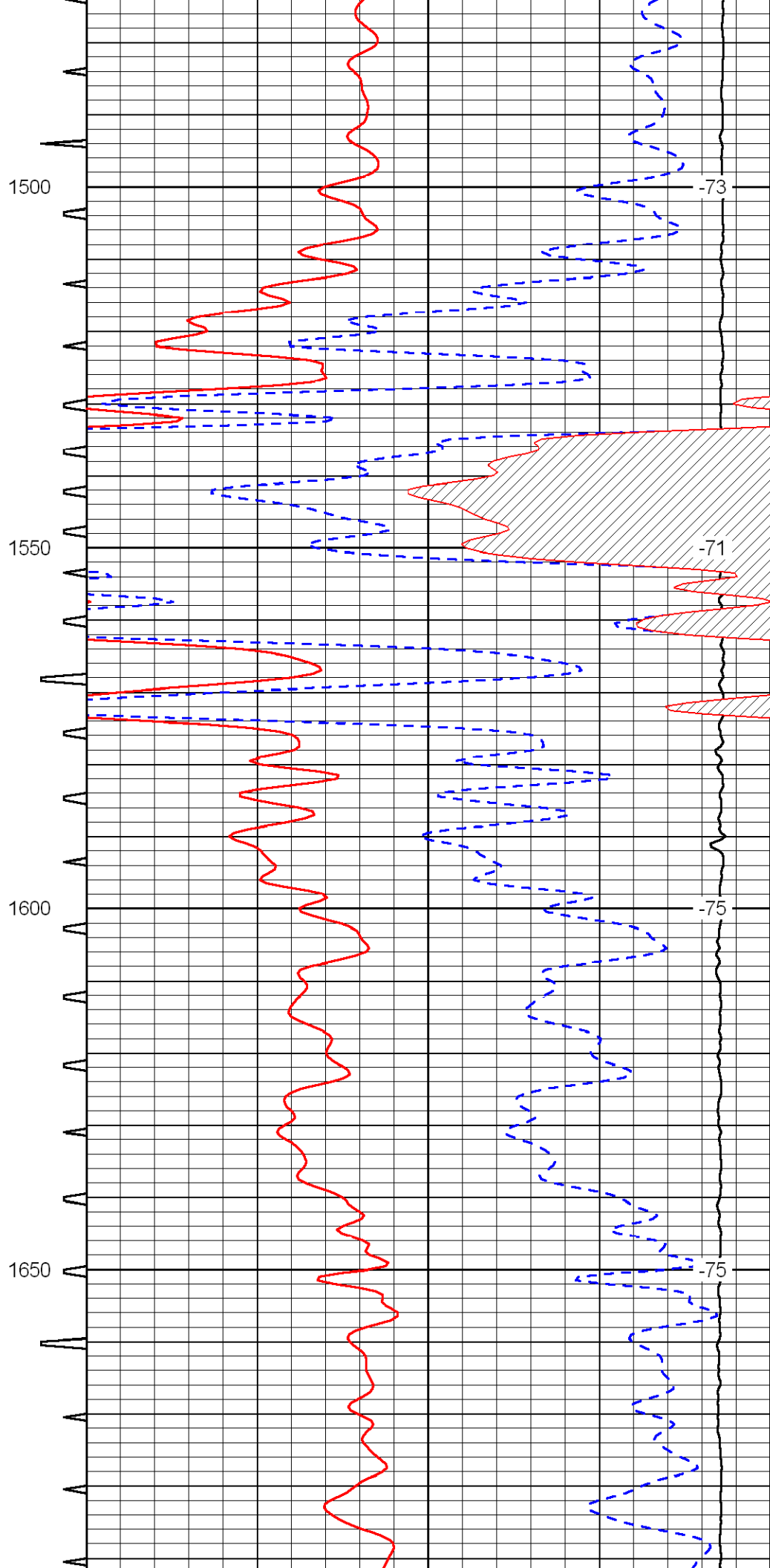
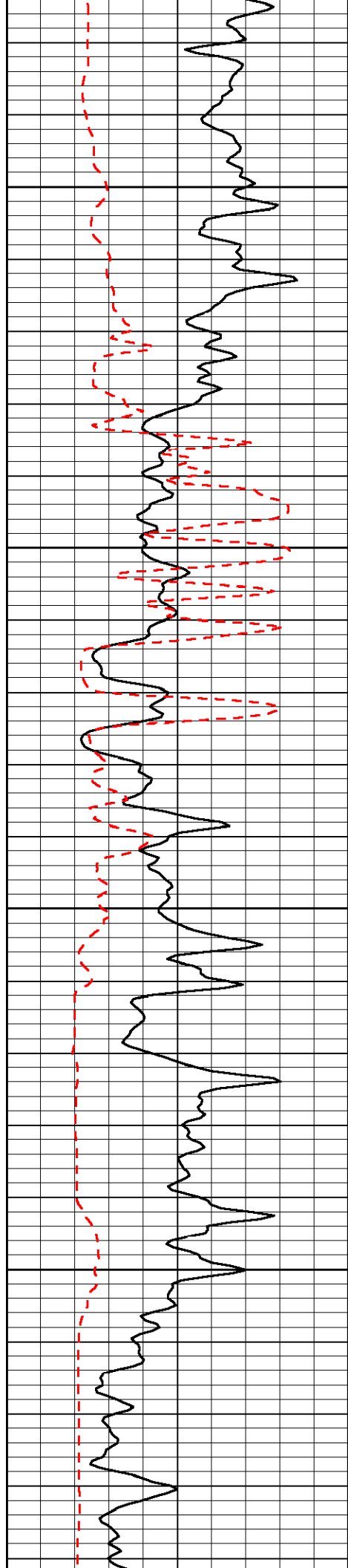


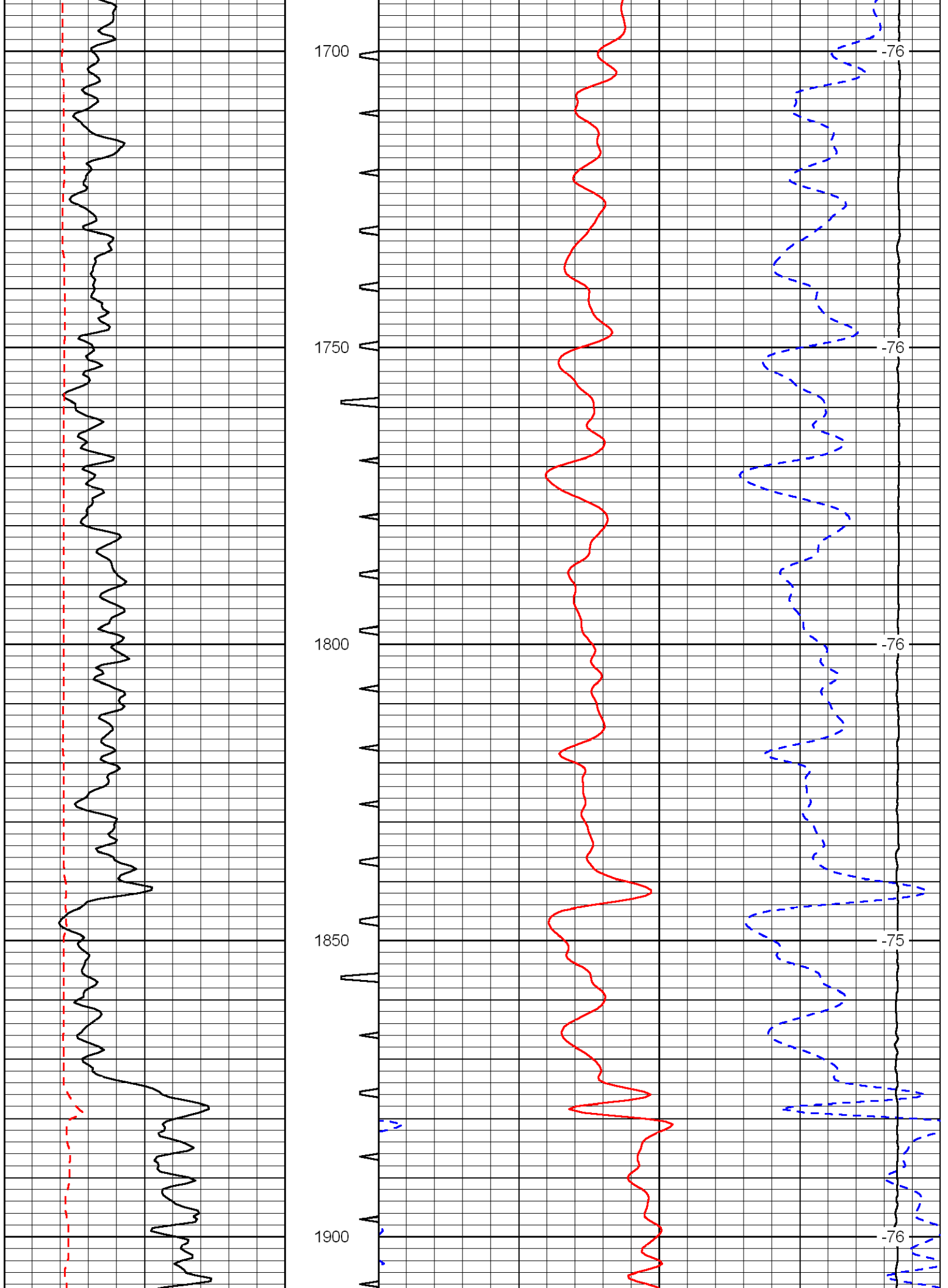


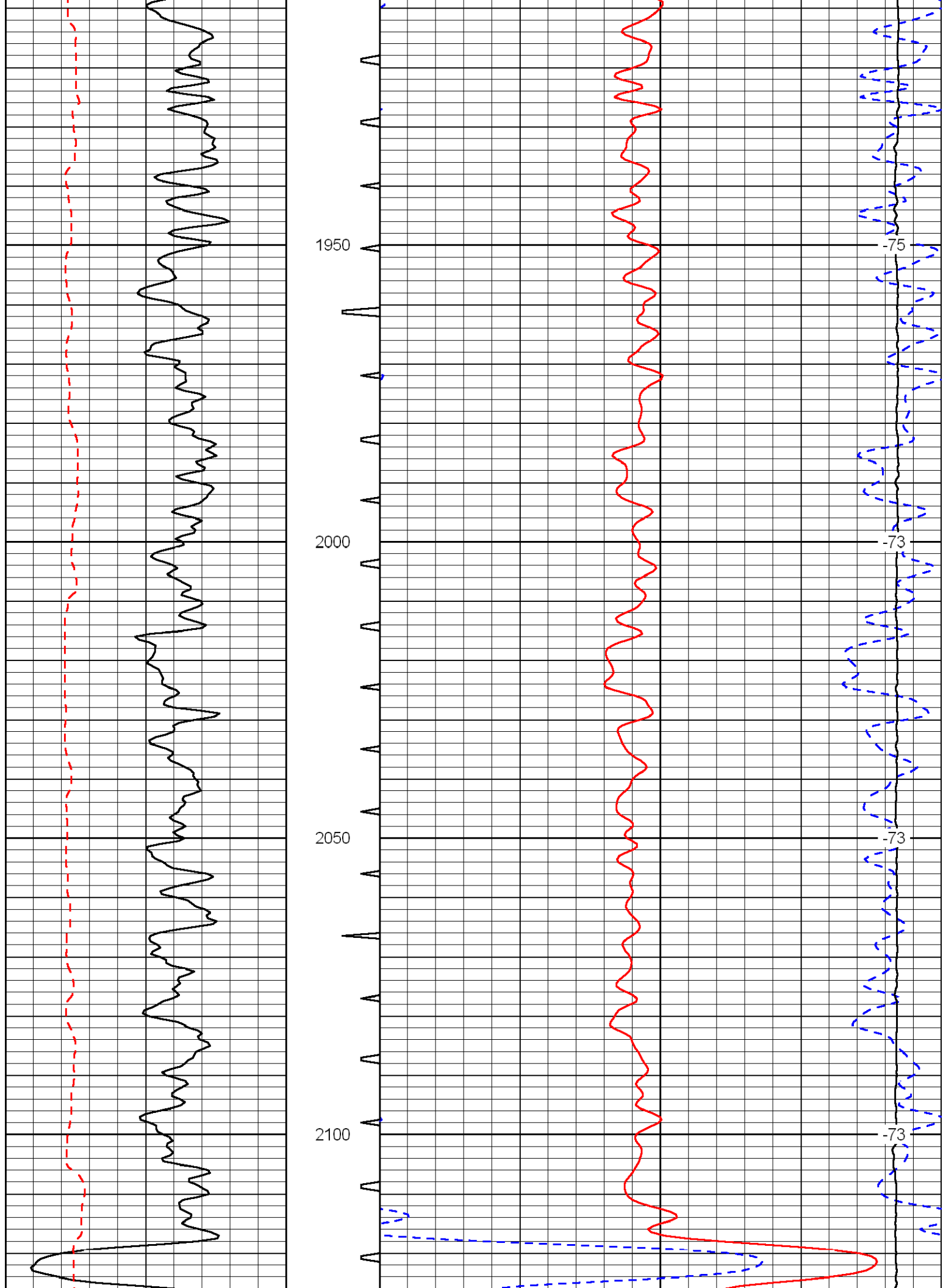


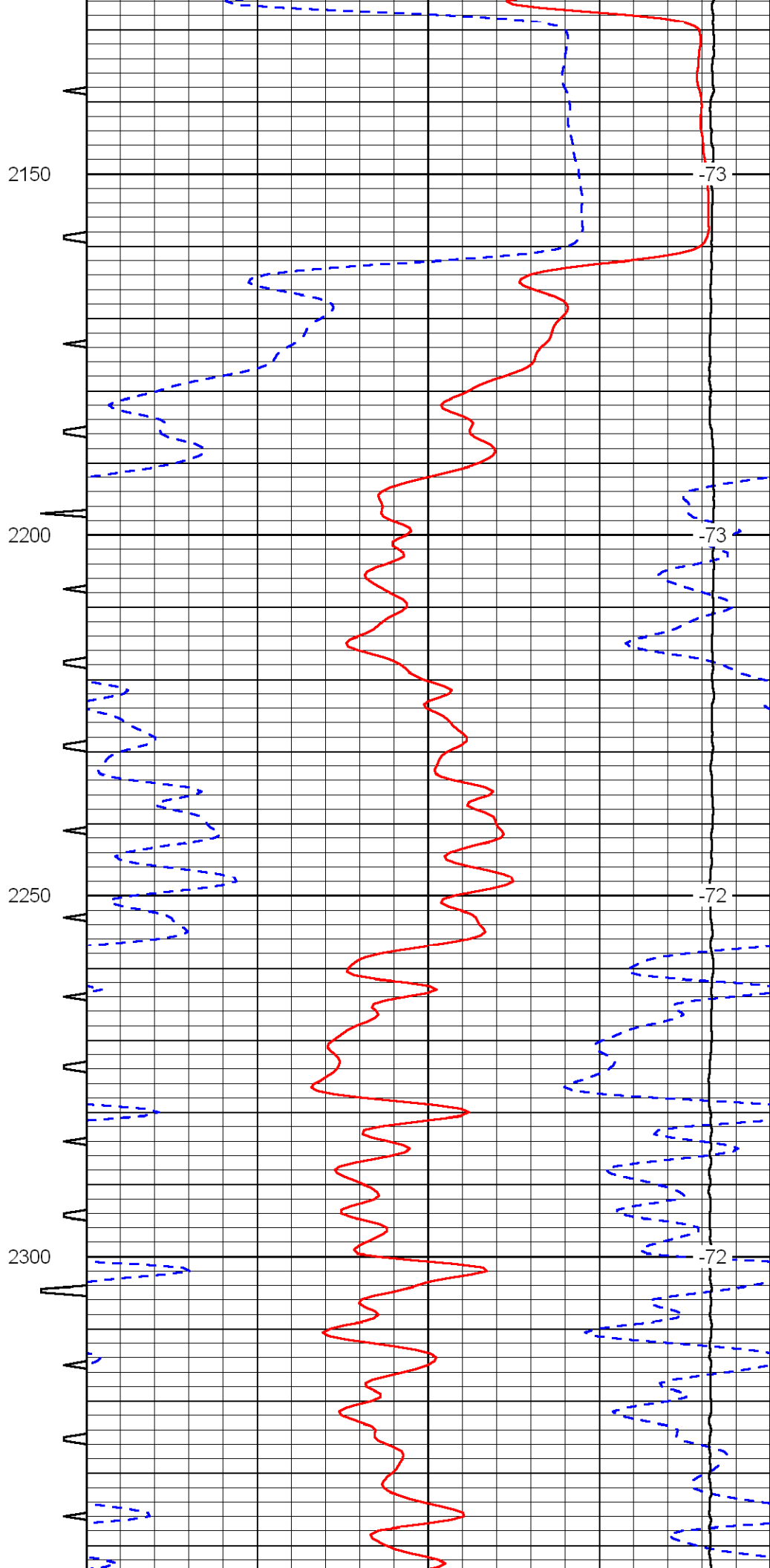
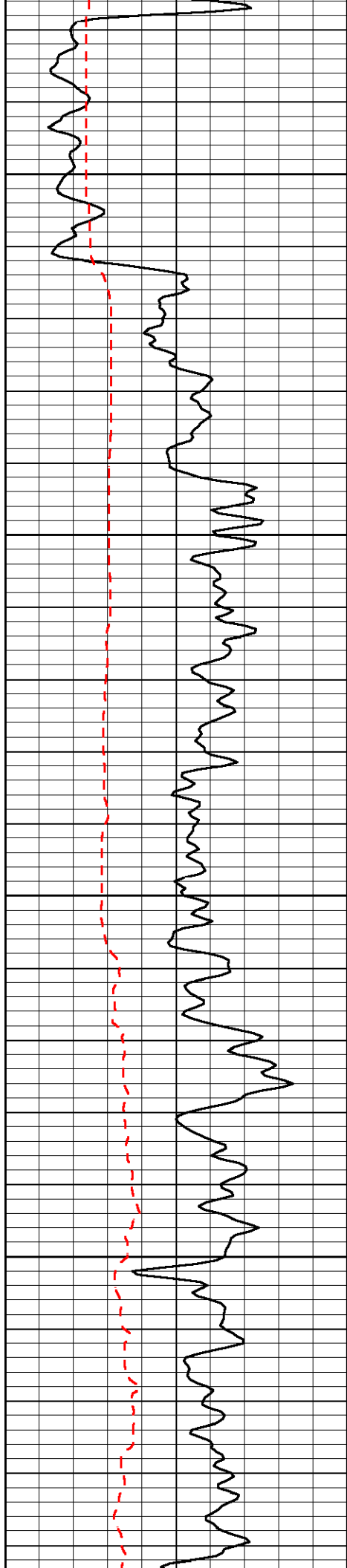


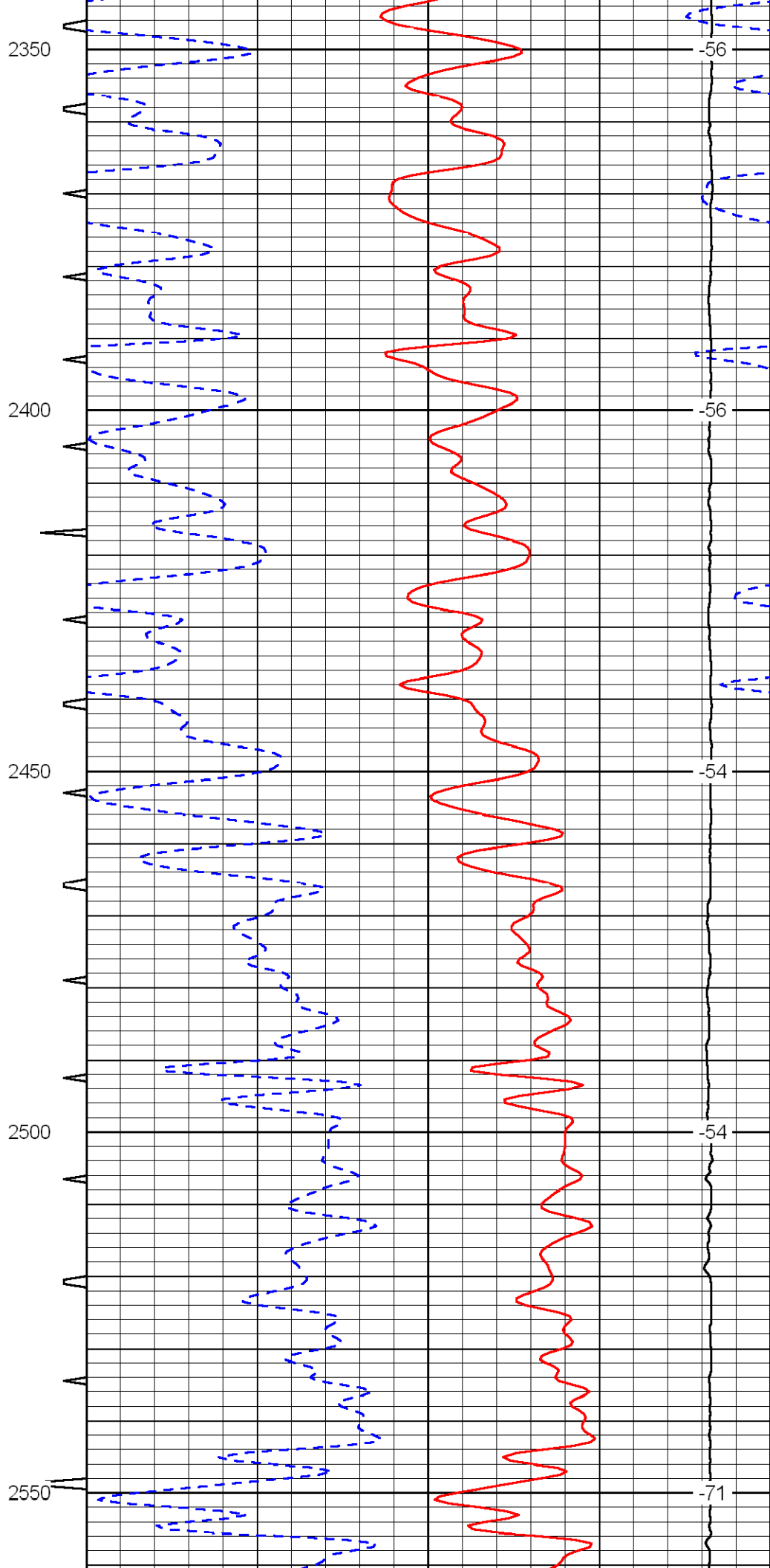
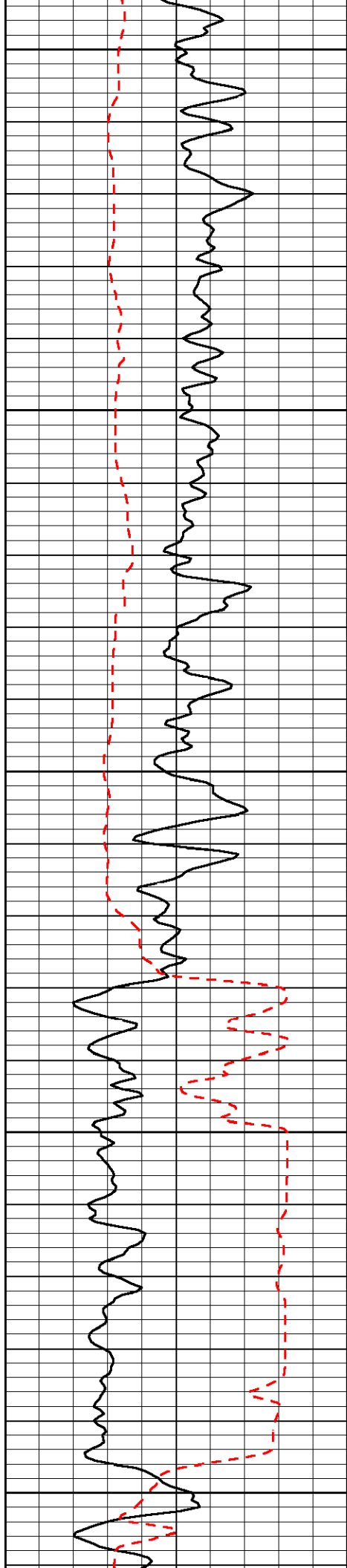


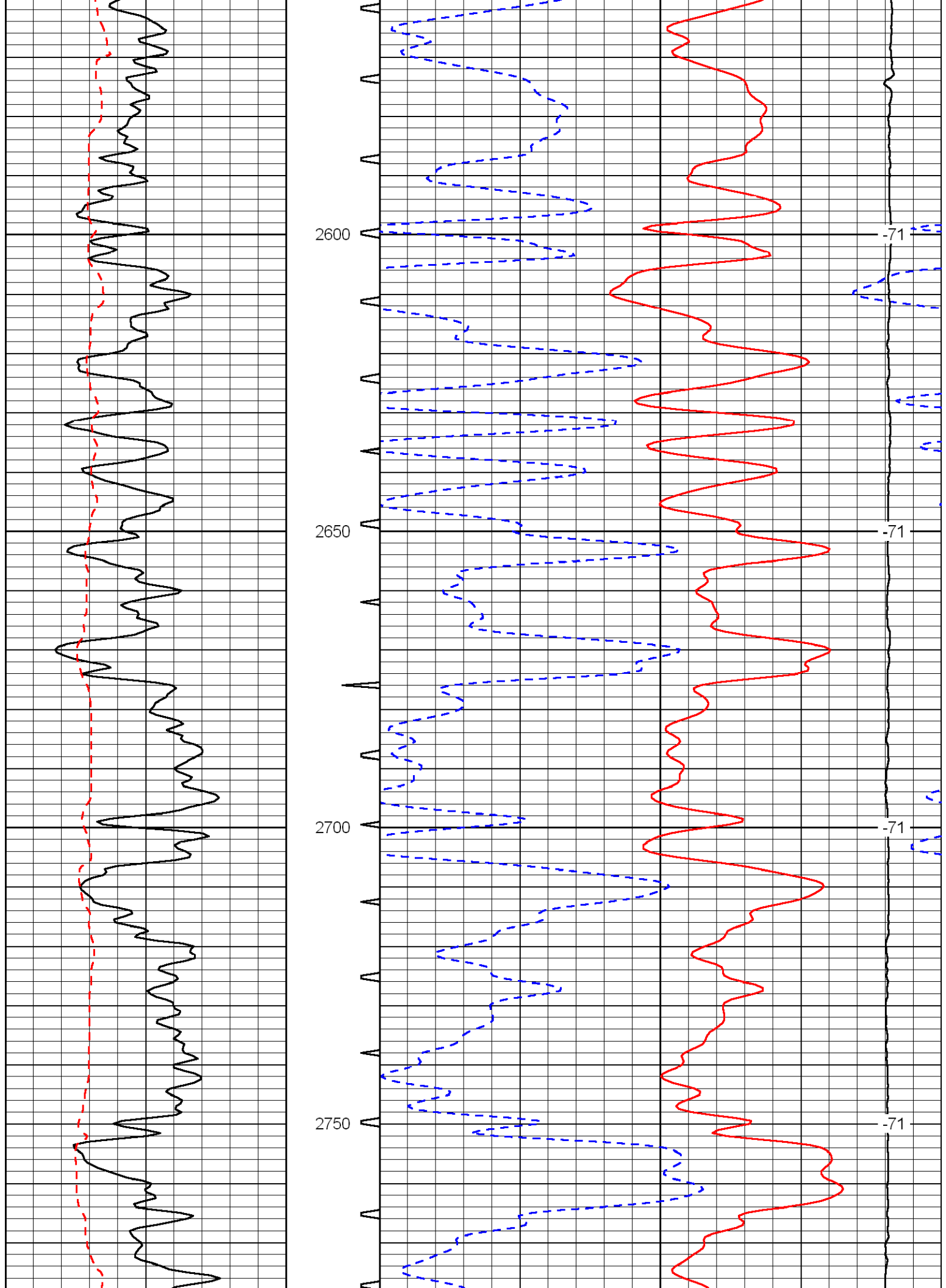


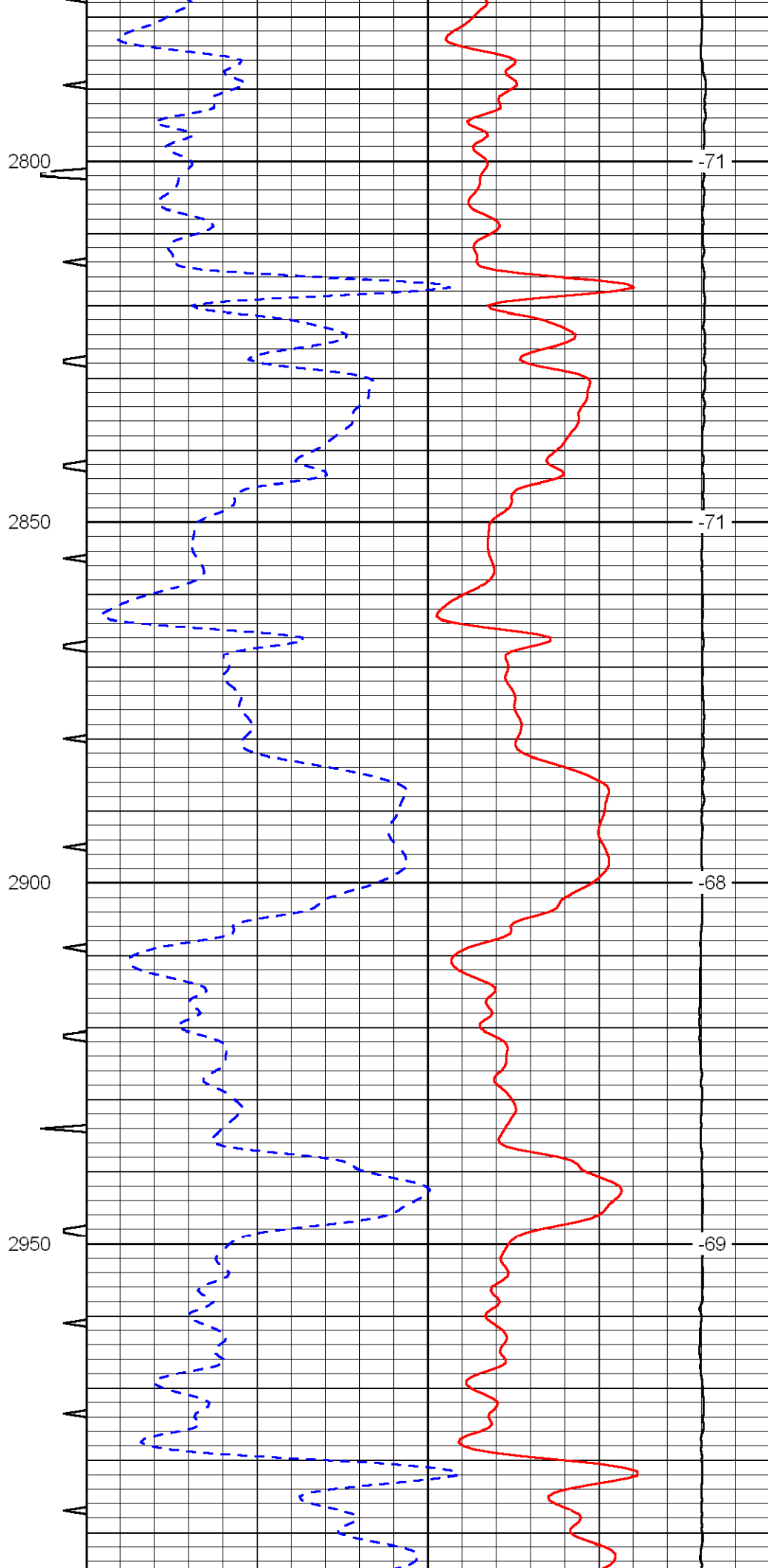
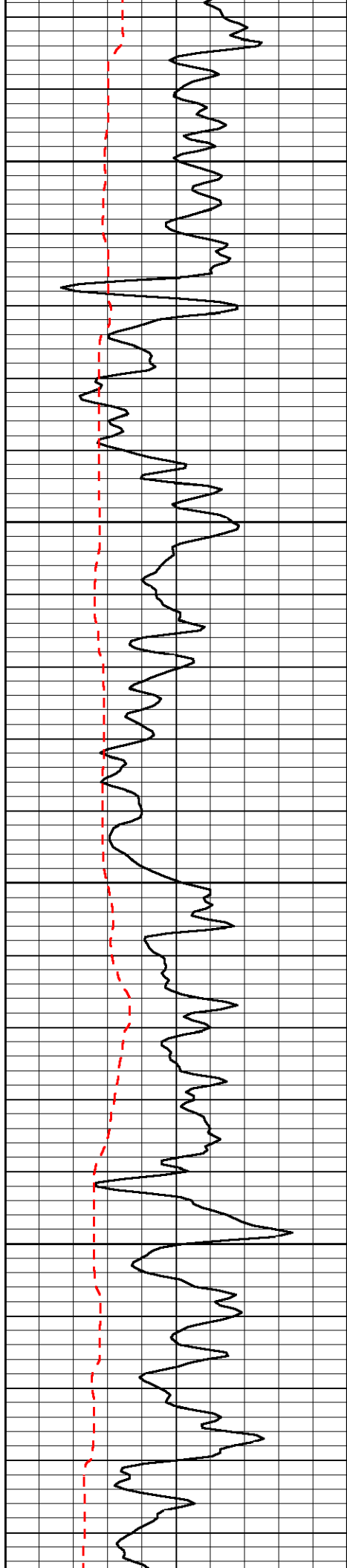


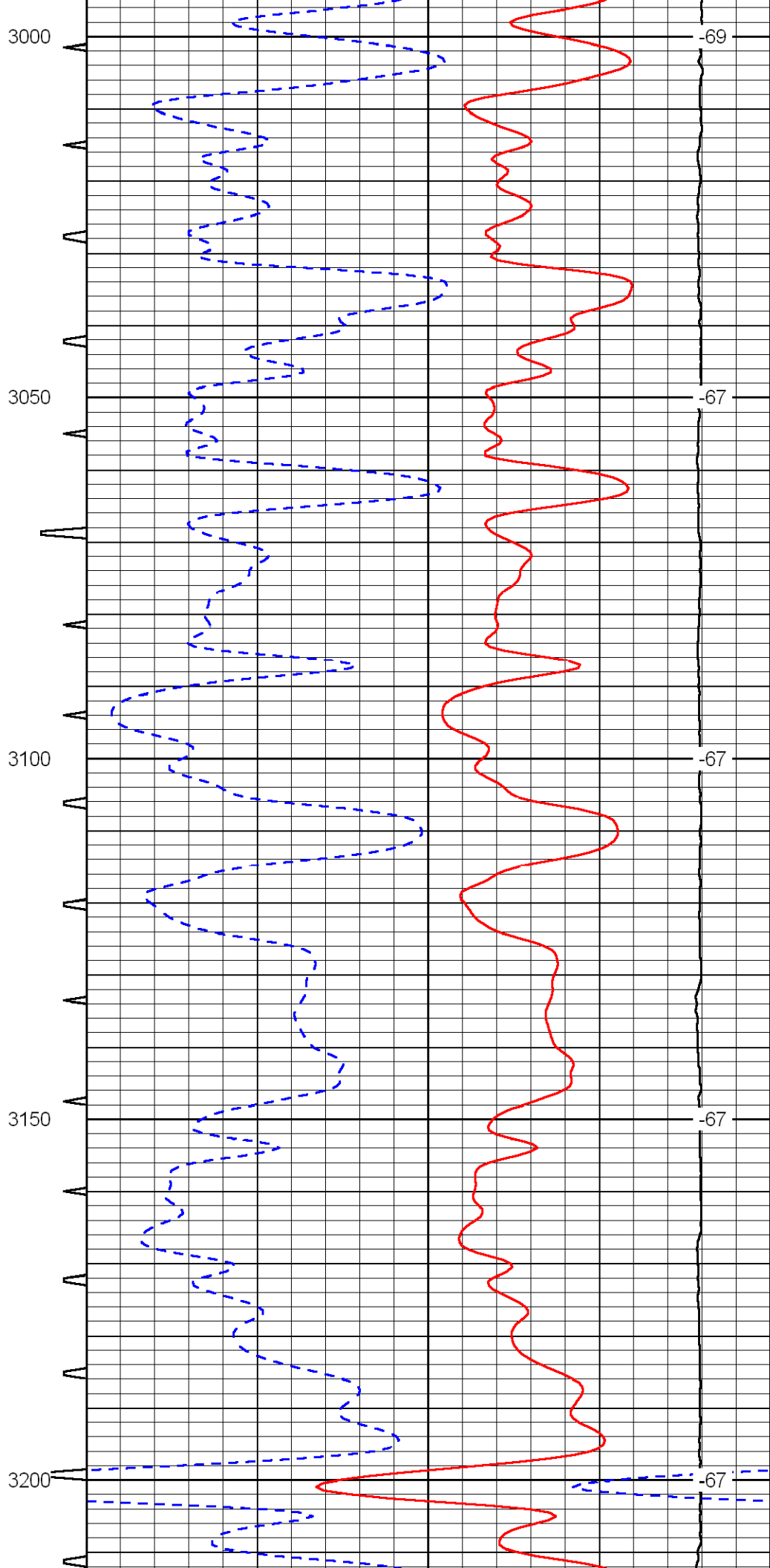
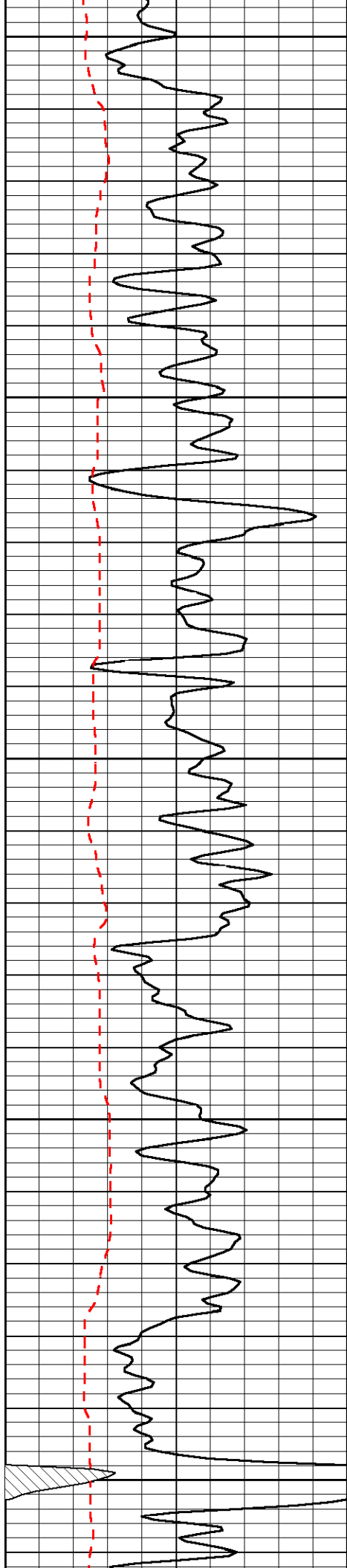


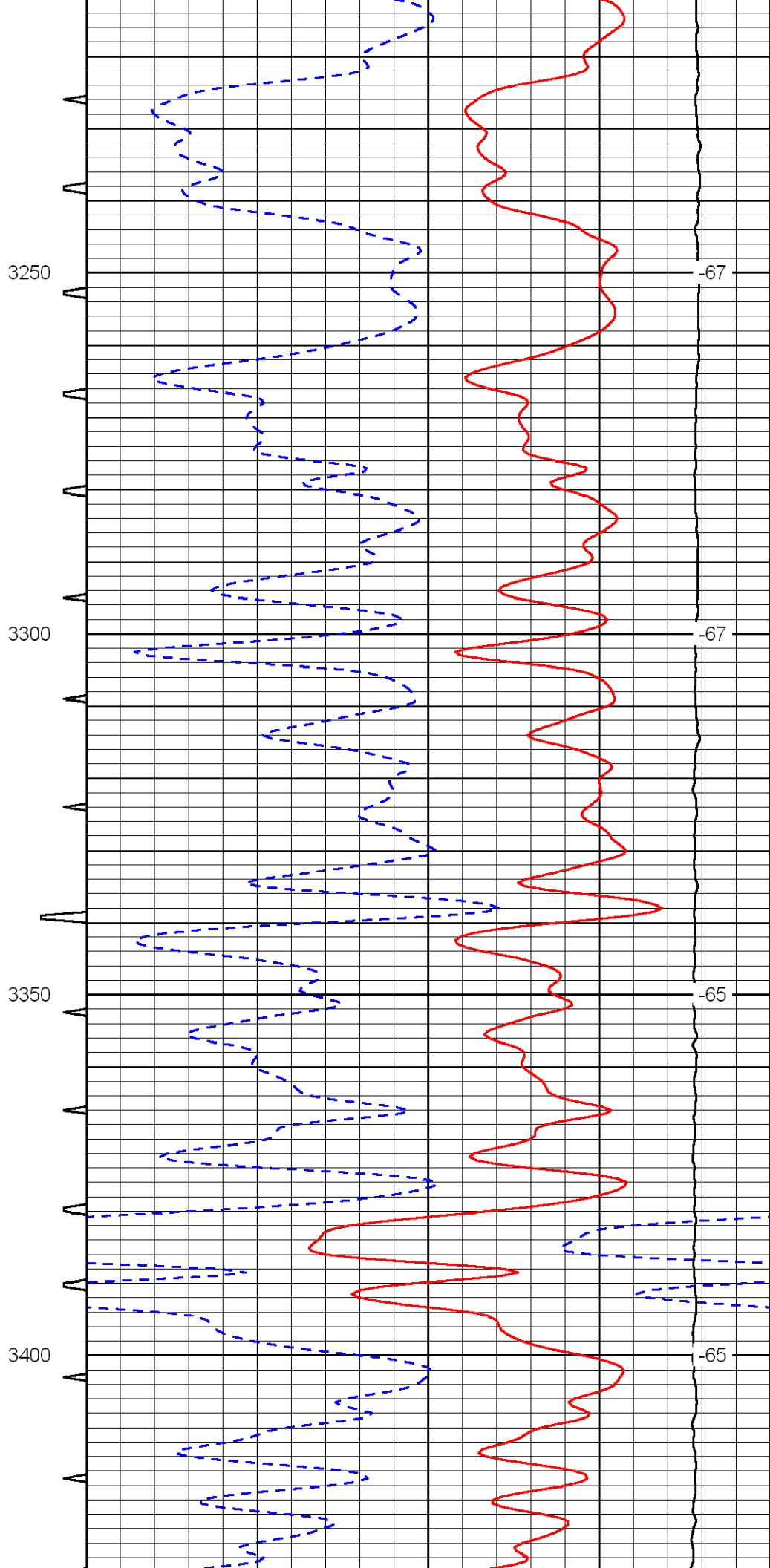
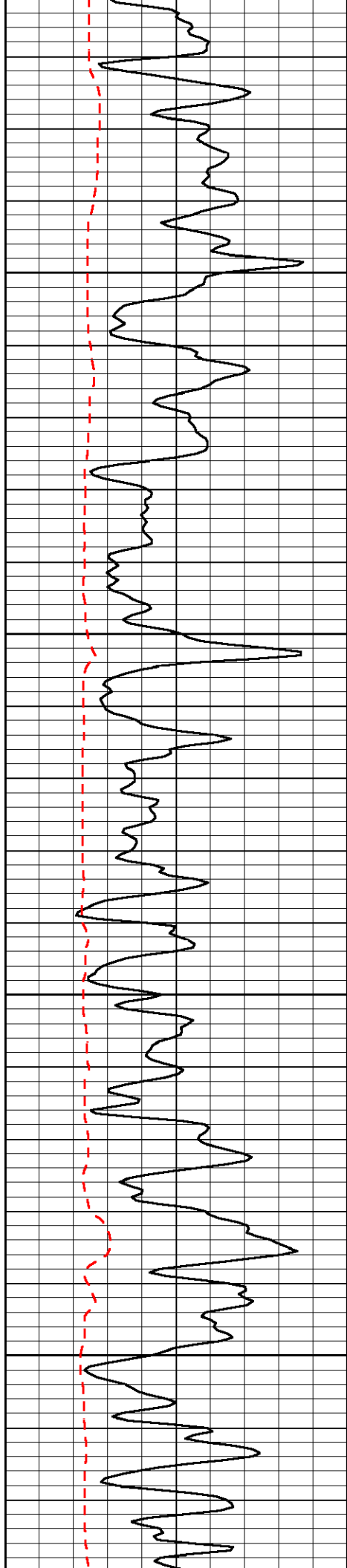


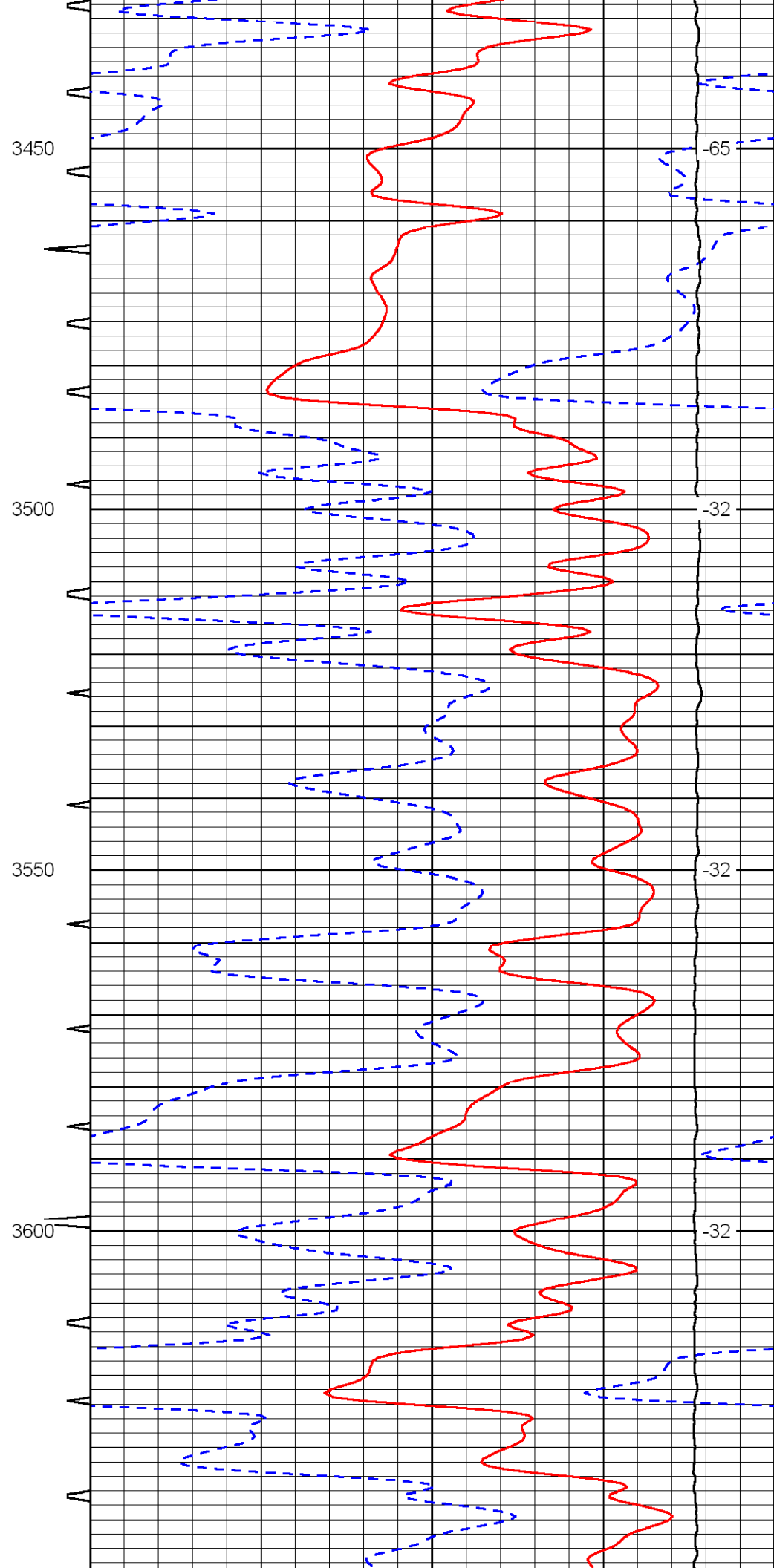
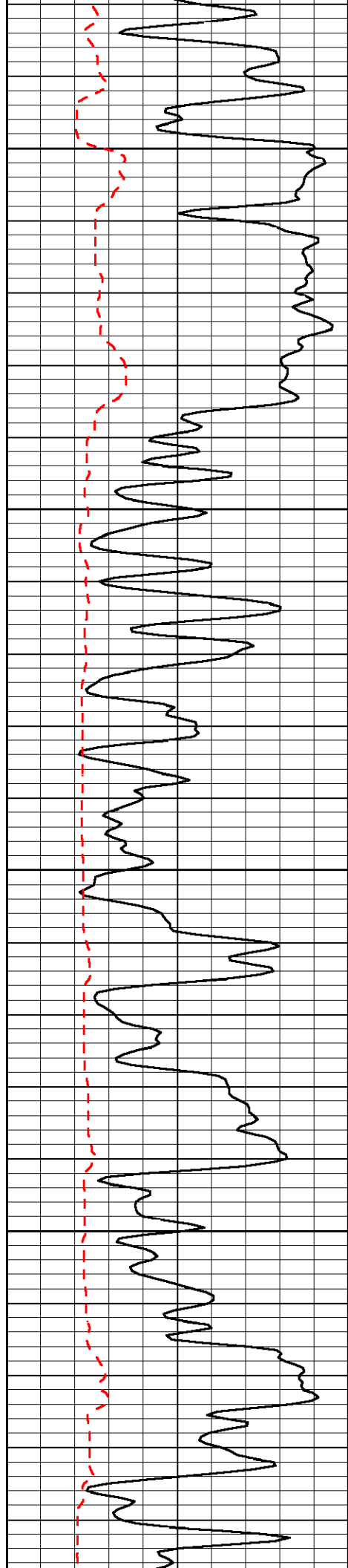


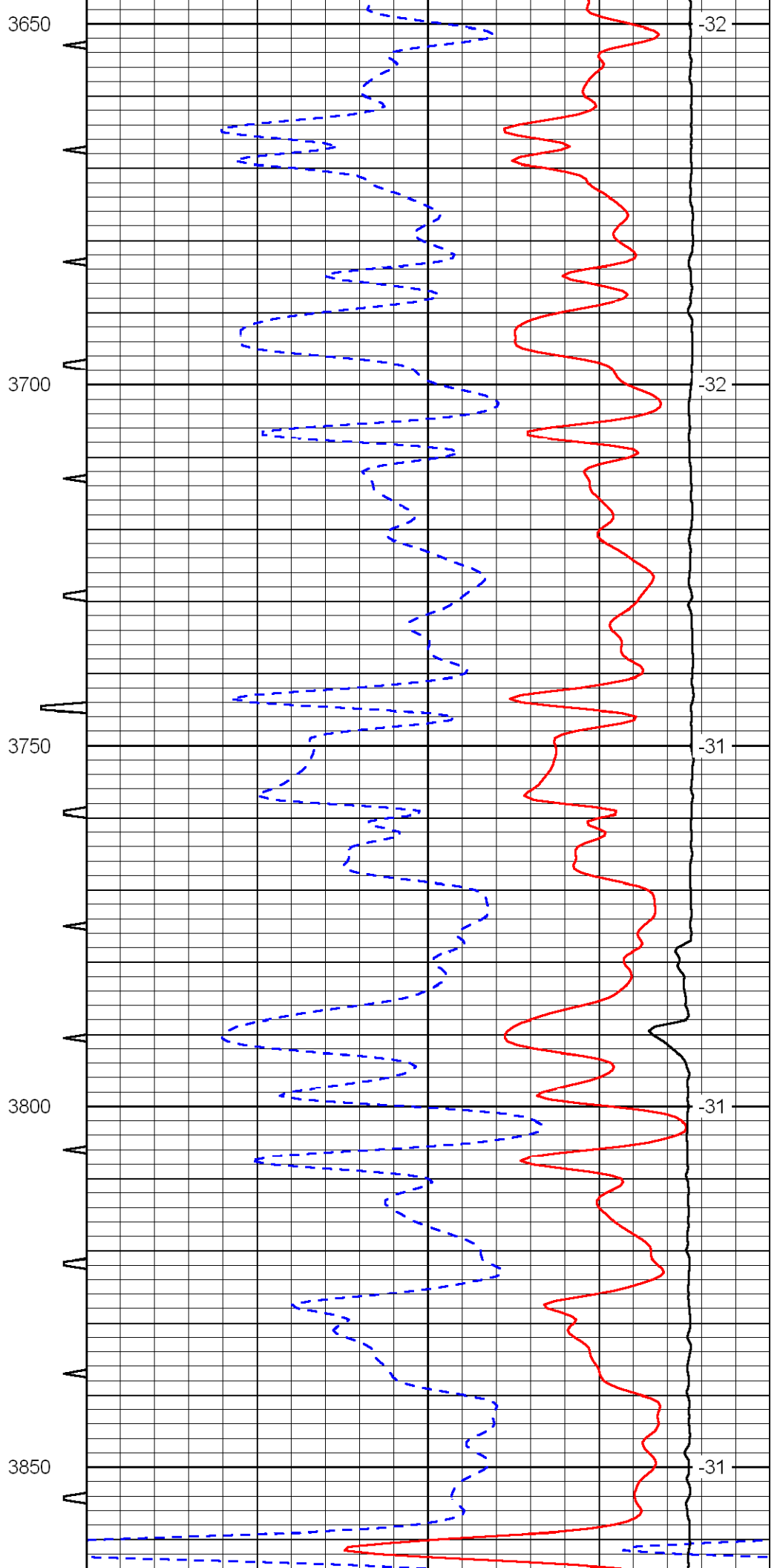
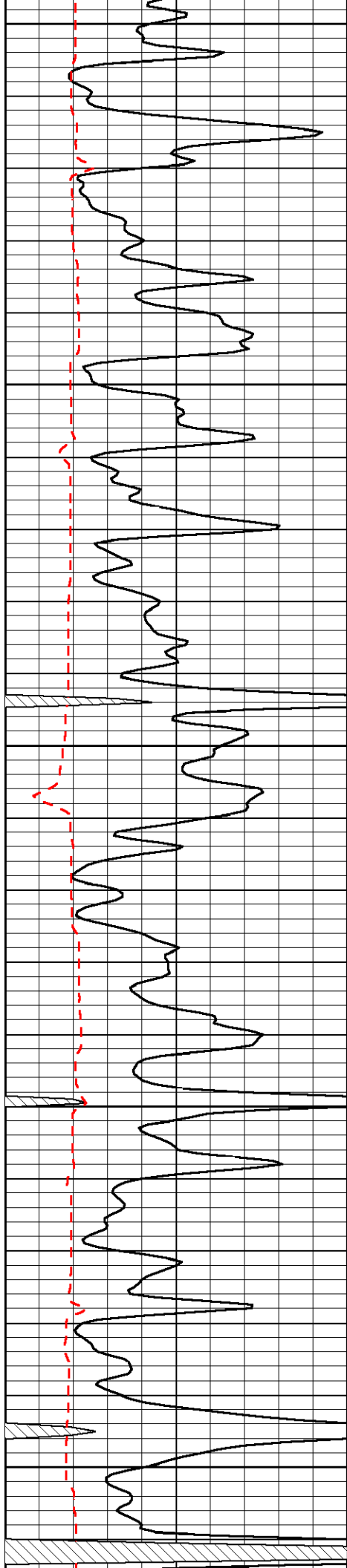


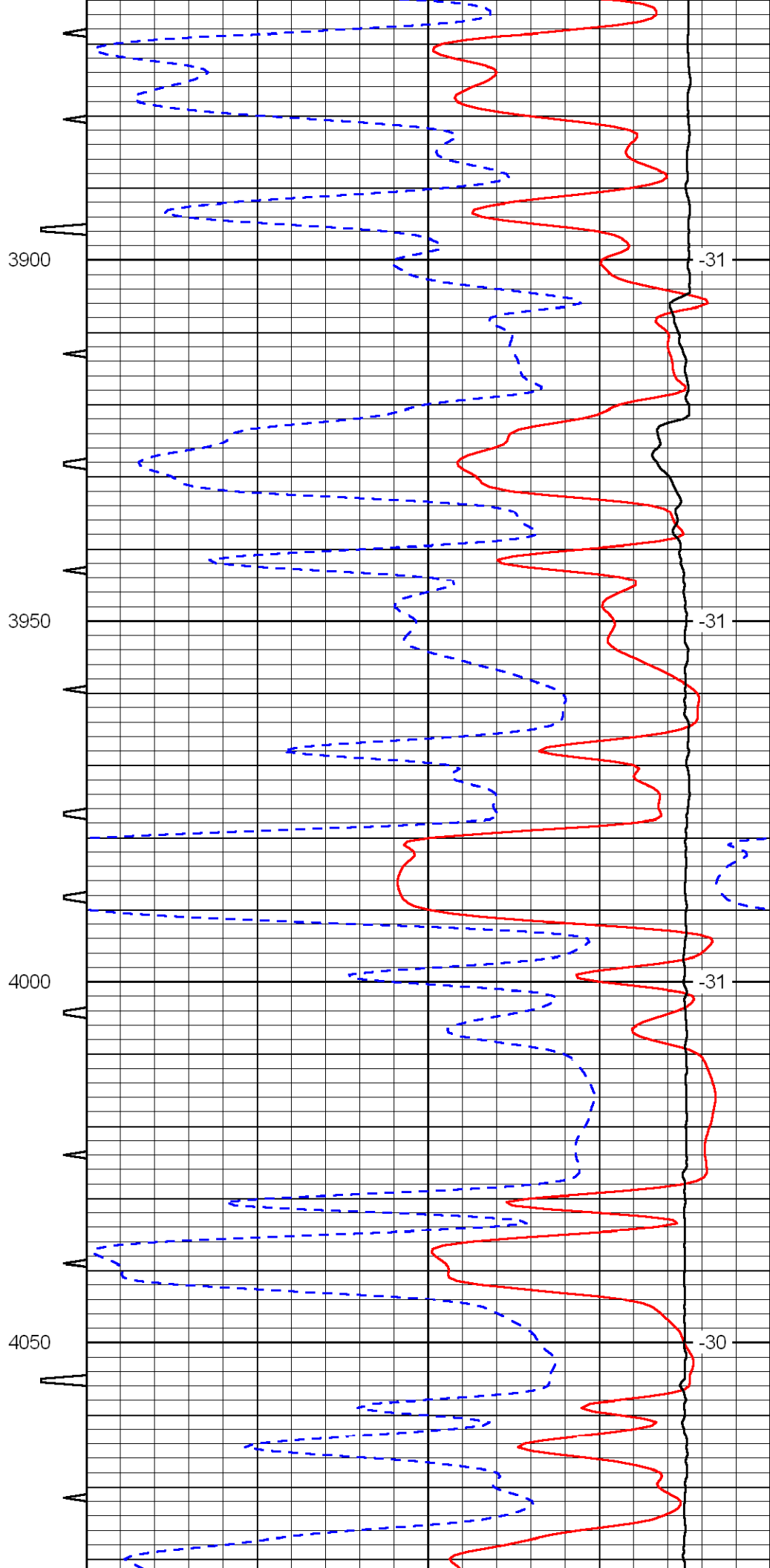
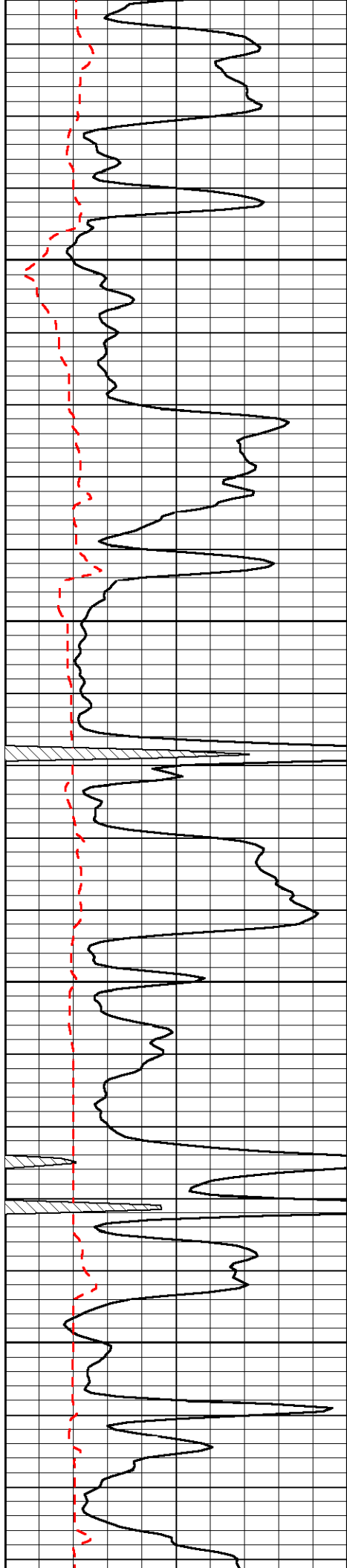


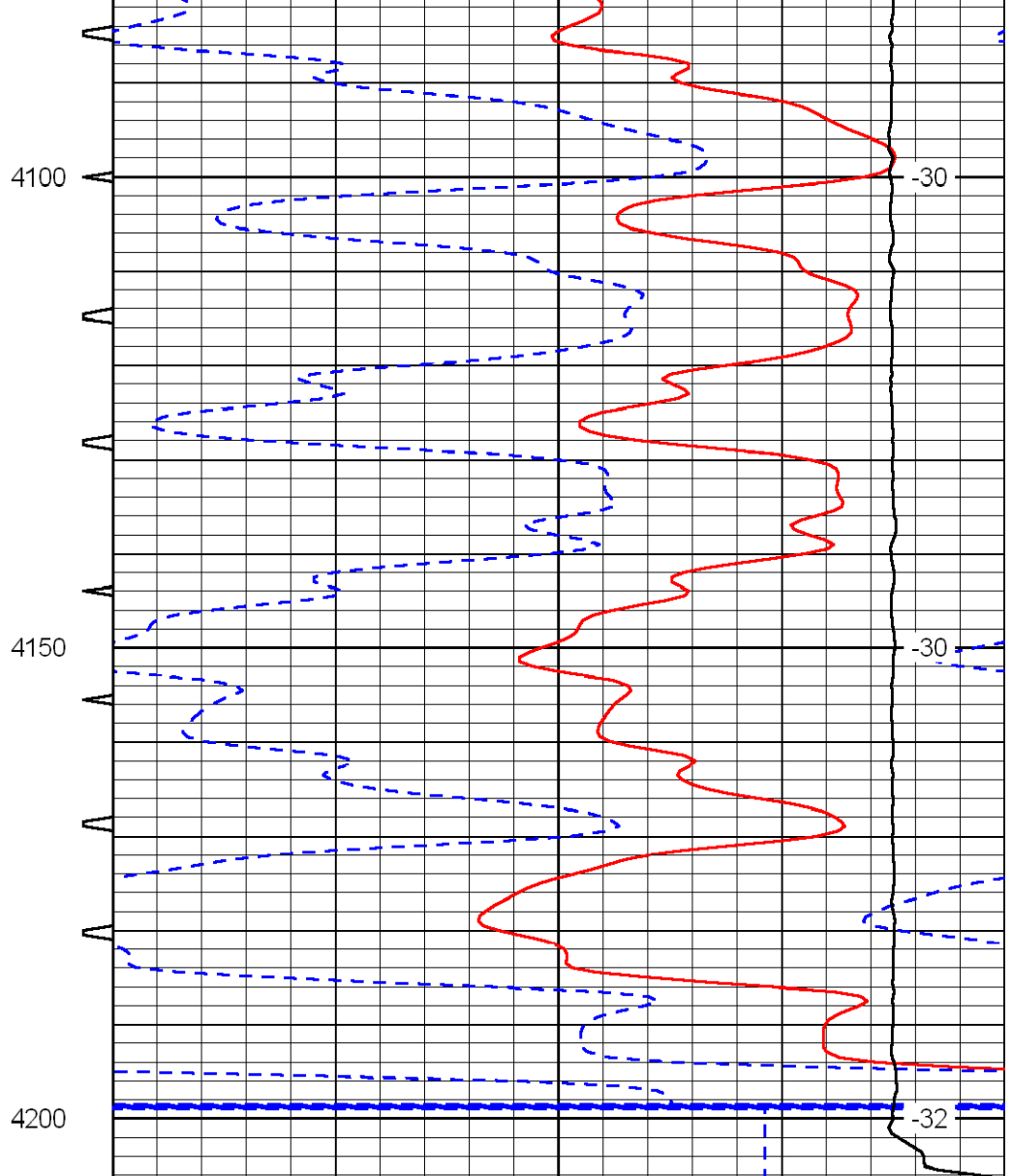
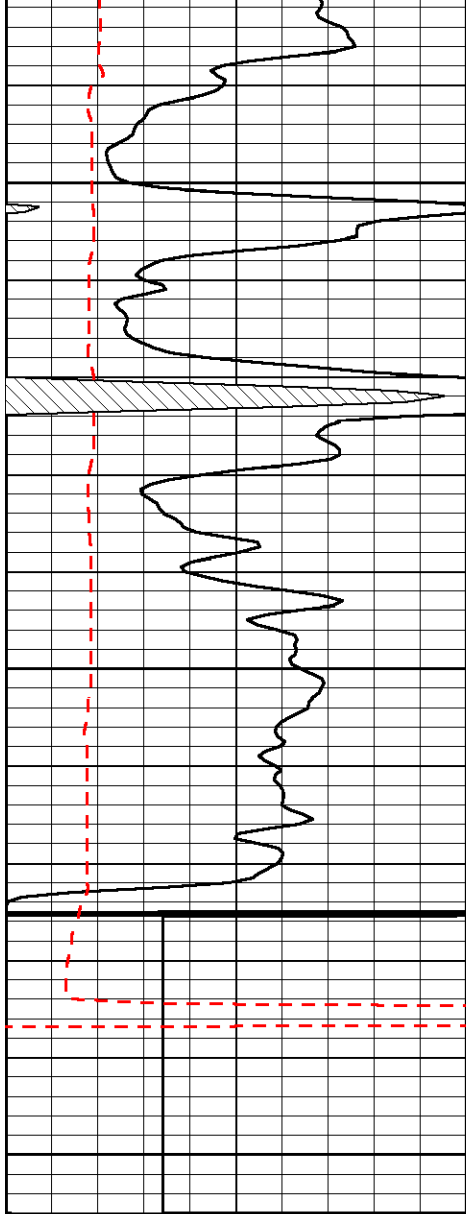












0	Gamma Ray	150	Sonic Int	140	Delta Time (usec/ft) (usec/ft)	40
150	Gamma Ray	300	5 (msec) 0	30	SPOR (pu)	-10
6	Caliper (in)	16		15000	LTEN (lb) (lb)	0
						LSPD (ft/min)