



## Dual Compensated Porosity Log

**DIGITAL LOG** (785) 625-3858

API No. 15-065-23,564-00-00	Company <b>Prospect Oil &amp; Gas, Inc.</b>	Other Services DIL / MEL
	Well <b>Pawley 'A' No. 1</b>	
	Field <b>Harrold Northeast</b>	
	County <b>Graham</b>	State <b>Kansas</b>
	Location <b>80' N &amp; 190' W of SW-NE-NE 910' FNL &amp; 1180' FEL</b>	
	Sec: <b>25</b>	Twp: <b>9 S</b> Rge: <b>22 W</b>
	Permanent Datum Log Measured From Drilling Measured From	Ground Level Kelly Bushing Kelly Bushing
		Elevation <b>2368</b> K.B. <b>2373</b> D.F. <b>2368</b> G.L. <b>2368</b>

Date	9/20/2009						
Run Number	One						
Type Log	CNL / CDL						
Depth Driller	3985						
Depth Logger	3984						
Bottom Logged Interval	3963						
Top Logged Interval	3250						
Type Fluid In Hole	Chemical						
Salinity, PPM CL	1,300						
Density	9.4						
Level	Full						
Max. Rec. Temp. F	118						
Operating Rig Time	4 Hours						
Equipment -- Location	4 Hays						
Recorded By	K. Bange						
Witnessed By	Brad Hutchison						
Borehole Record							
Run No	Bit	From	To	Size	Wgt.	From	To
One	12.25	00	219	8.625	23#	00	219
Two	7.875	219		TD			
Casing Record							

<<< Fold Here >>>

All interpretations are opinions based on inferences from electrical or other measurements and we cannot and do not guarantee the accuracy or correctness of any interpretation, and we shall not, except in the case of gross or willful negligence on our part, be liable or responsible for any loss, costs, damages, or expenses incurred or sustained by anyone resulting from any interpretation made by any of our officers, agents or employees. These interpretations are also subject to our general terms and conditions set out in our current Price Schedule.

### Comments

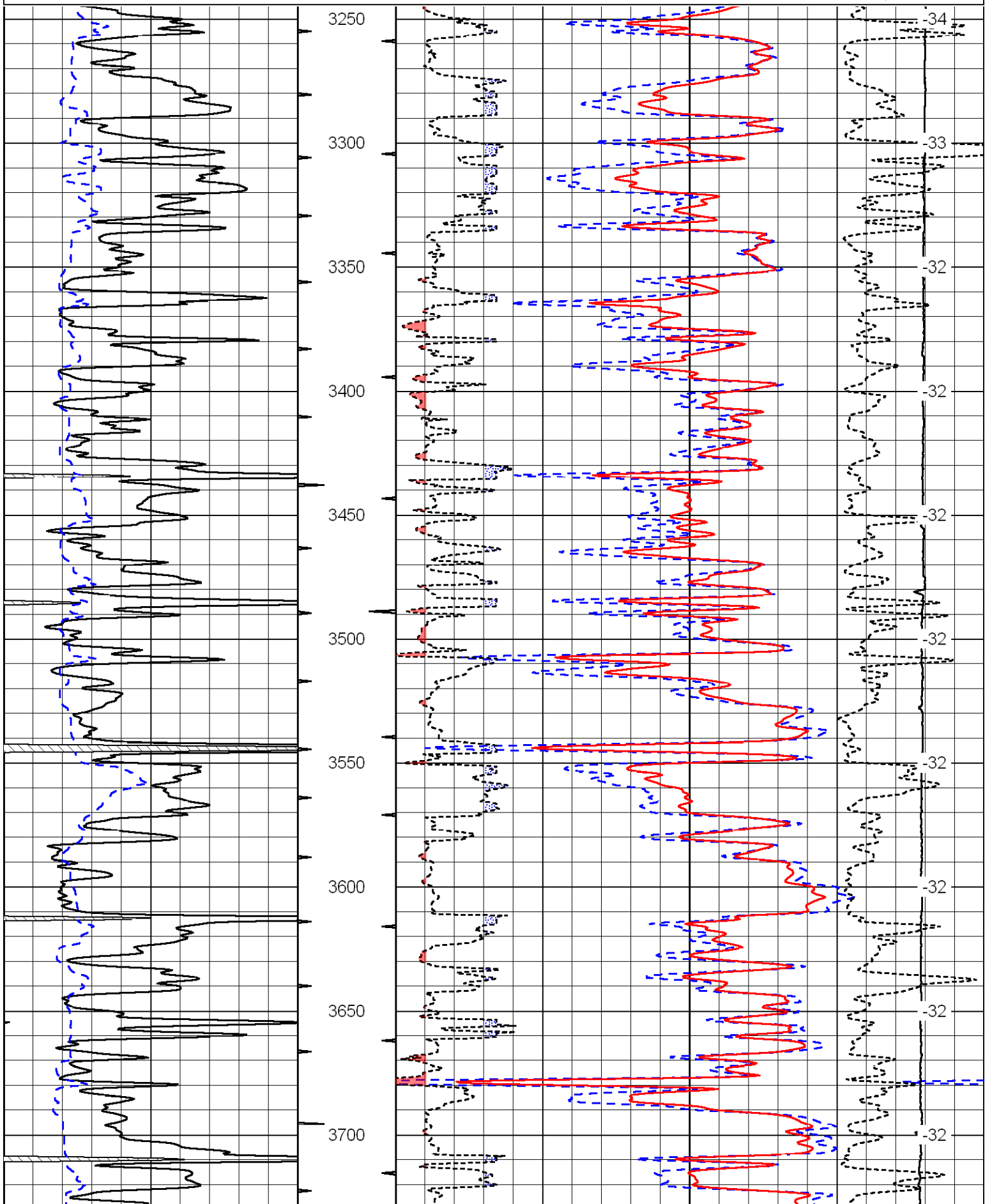
Thank you for using Log-Tech, Inc.  
(785) 625-3858

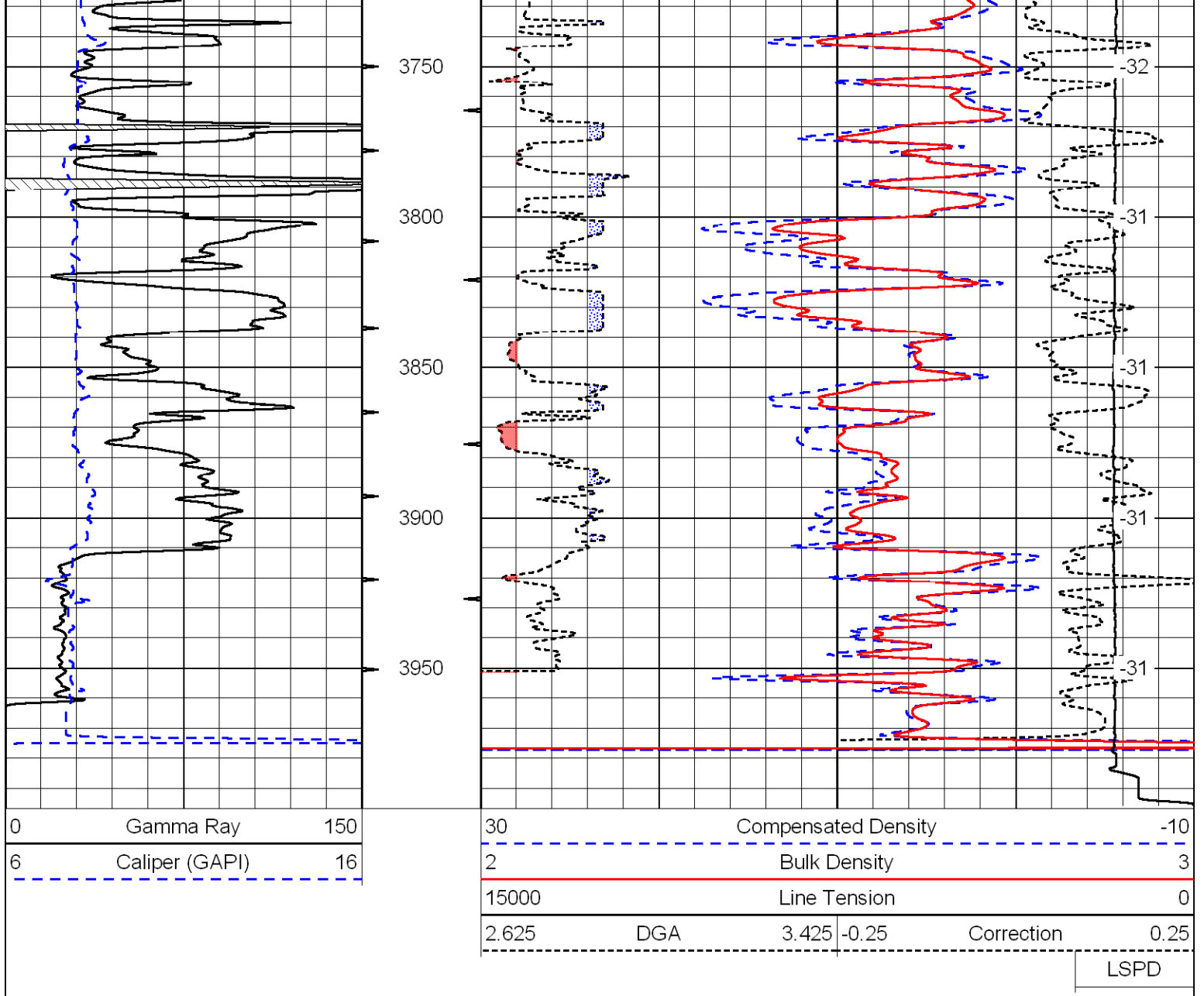
Red Line Church, 4.5 W to 340th, 1 N, 1/2 W, S into

Database File: prospect092009hd.db  
 Dataset Pathname: dil/pros2in  
 Presentation Format: cdl  
 Dataset Creation: Sun Sep 20 02:35:54 2009  
 Charted by: Depth in Feet scaled 1:600

0	Gamma Ray	150
6	Caliper (GAPI)	16

30	Compensated Density		-10
2	Bulk Density		3
15000	Line Tension		0
2.625	DGA	3.425	-0.25
Correction			0.25
LSPD			





Database File: prospect092009hd.db  
 Dataset Pathname: dil/pros2in  
 Presentation Format: cndlspec  
 Dataset Creation: Sun Sep 20 02:35:54 2009  
 Charted by: Depth in Feet scaled 1:240

