



Microresistivity Log

DIGITAL LOG (785) 625-3858

API No. 15-109-20,932-00-00	Company Shakespeare Oil Company, Inc.	Location 1,180' FNL & 2,230' FEL
	Well Ottley No. 3-14	
	Field Logan	
	County Logan	State Kansas
	Sec: 14	Twp: 14S Rge: 32W
Permanent Datum Log Measured From Drilling Measured From	Ground Level Kelly Bushing Kelly Bushing	Elevation 2814 5 Ft. Above Perm. Datum 2814
		Other Services CNL/CDL DIL/BHCS

Date	7/30/2010
Run Number	Two
Depth Driller	4499
Depth Logger	4492
Bottom Logged Interval	4491
Top Log Interval	3500
Casing Driller	8.625 @ 218
Casing Logger	219
Bit Size	7.875
Type Fluid in Hole	Chemical
Salinity, ppm CL	4400
Density / Viscosity	9.0 53
pH / Fluid Loss	10.0 8.8
Source of Sample	Flowline
Rm @ Meas. Temp	1.1 @ 85
Rmf @ Meas. Temp	.83 @ 85
Rmc @ Meas. Temp	1.49 @ 85
Source of Rmf / Rmc	Charts
Rm @ BHT	.77 @ 121
Operating Rig Time	4 Hours
Max Rec. Temp. F	121
Equipment Number	10
Location	Hays
Recorded By	J. Long
Witnessed By	Tim Priest

<<< Fold Here >>>

All interpretations are opinions based on inferences from electrical or other measurements and we cannot and do not guarantee the accuracy or correctness of any interpretation, and we shall not, except in the case of gross or willful negligence on our part, be liable or responsible for any loss, costs, damages, or expenses incurred or sustained by anyone resulting from any interpretation made by any of our officers, agents or employees. These interpretations are also subject to our general terms and conditions set out in our current Price Schedule.

Comments

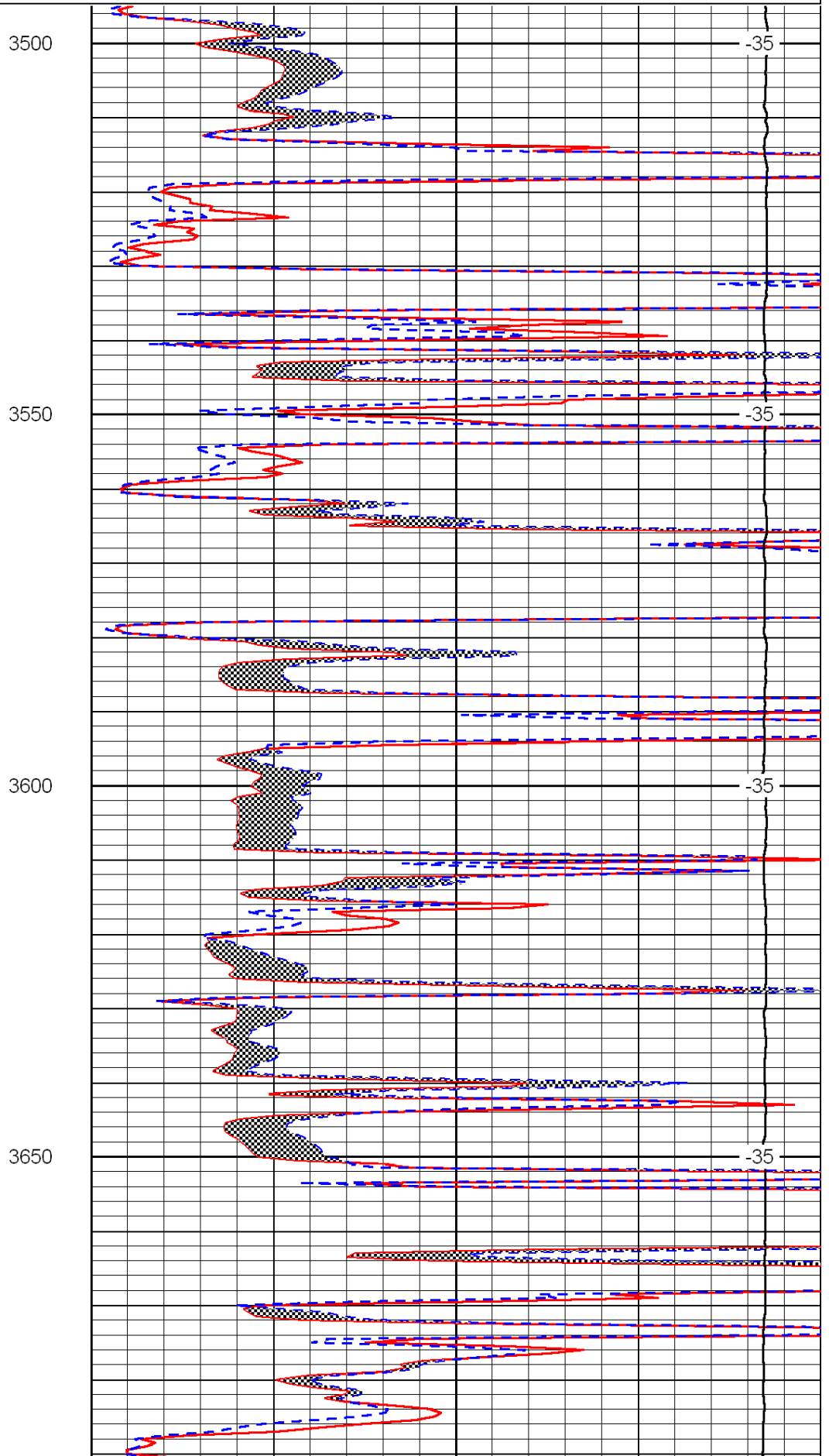
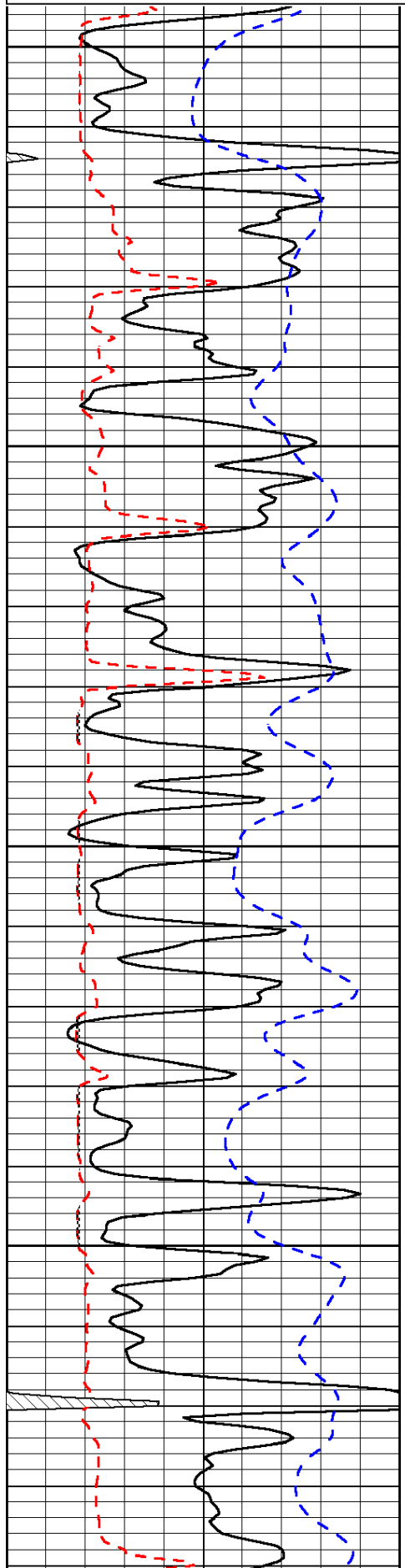
Thank you for using Log-Tech, Inc.
(785) 625-3858

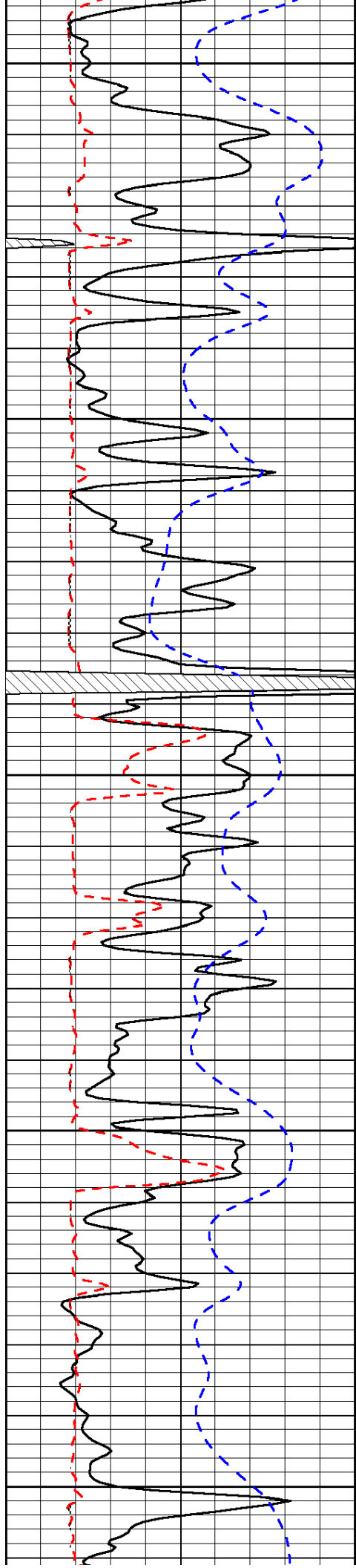
Oakley, South to Monument Rock Sign, 1 East, 1 North, West and South Into

0	Gamma Ray	150
6	Micro Log Caliper (GAPI)	16
-200	SP (mV)	0

0	Micro Inverse 1 X 1	40
0	Micro Normal 2"	40
15000	Line Weight	0

LSPD





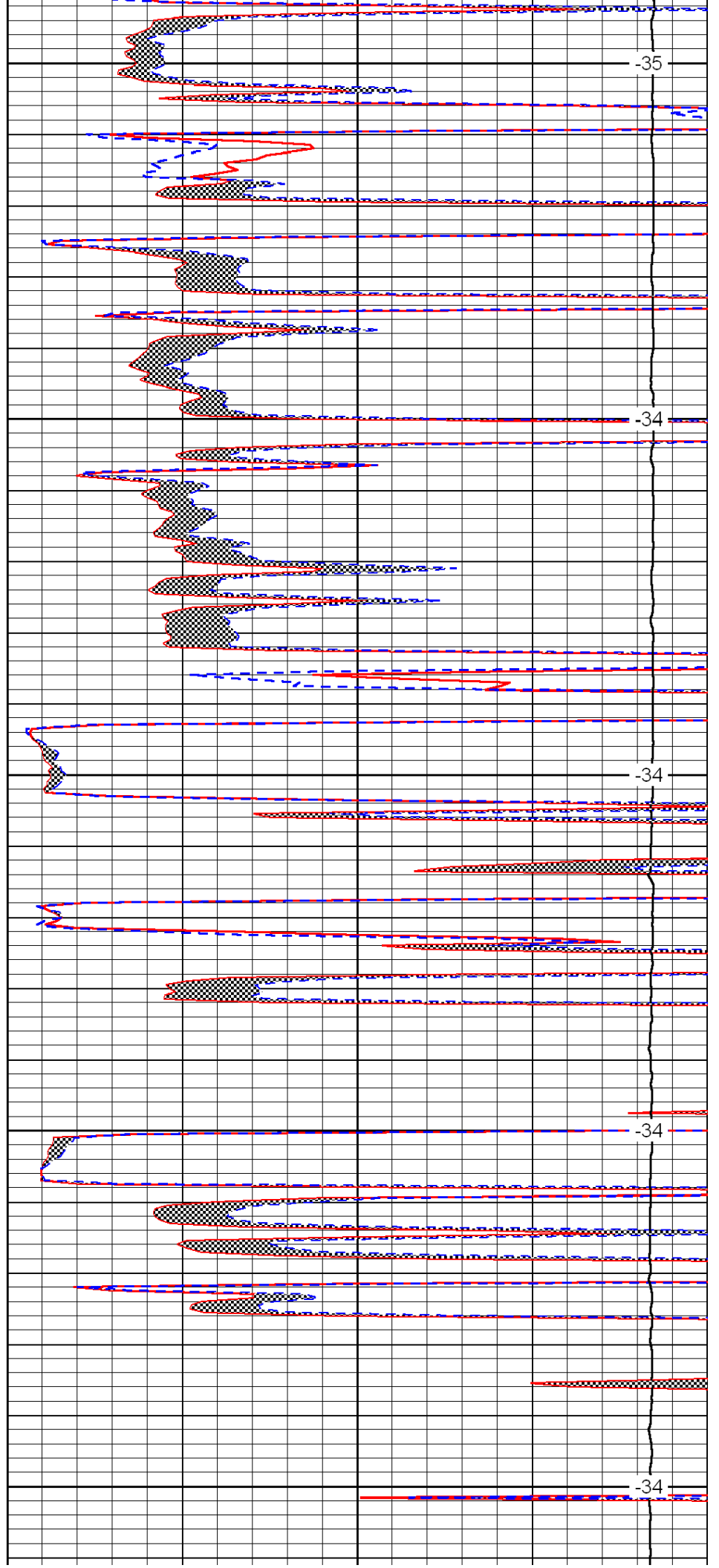
3700

3750

3800

3850

3900



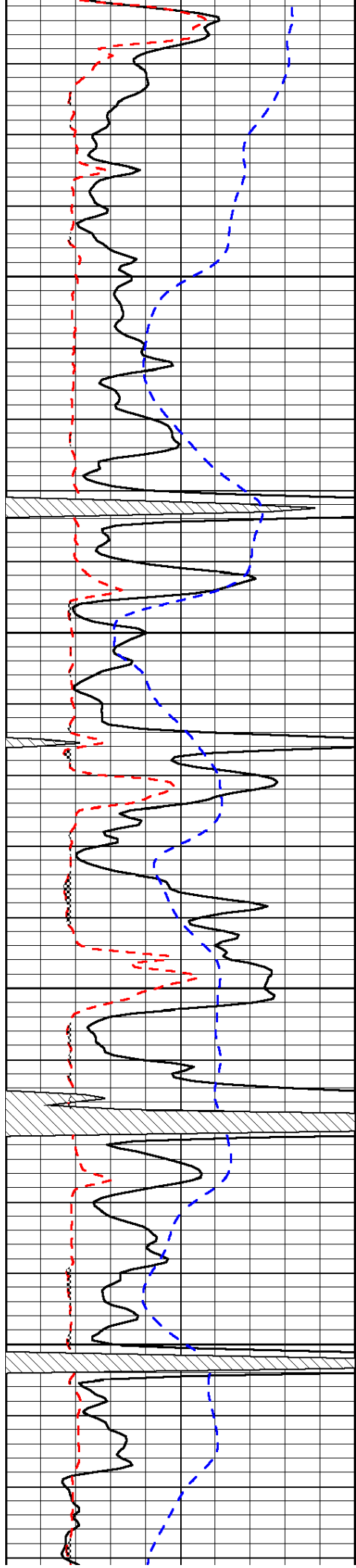
-35

-34

-34

-34

-34

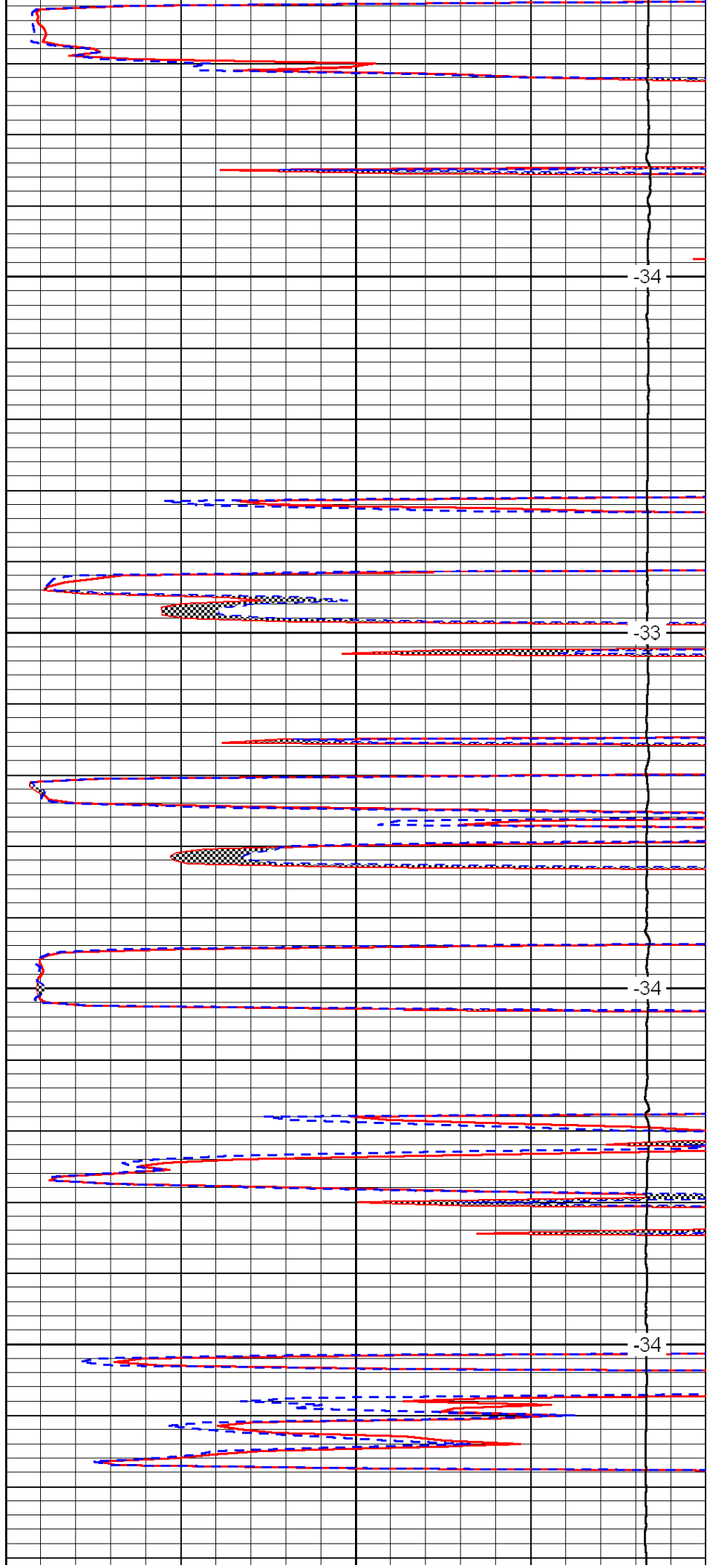


3950

4000

4050

4100

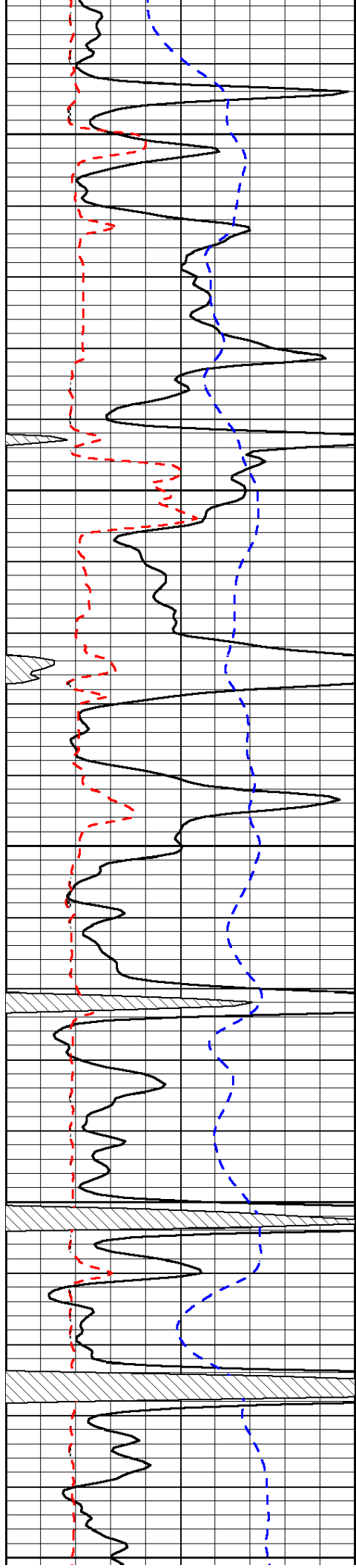


-34

-33

-34

-34



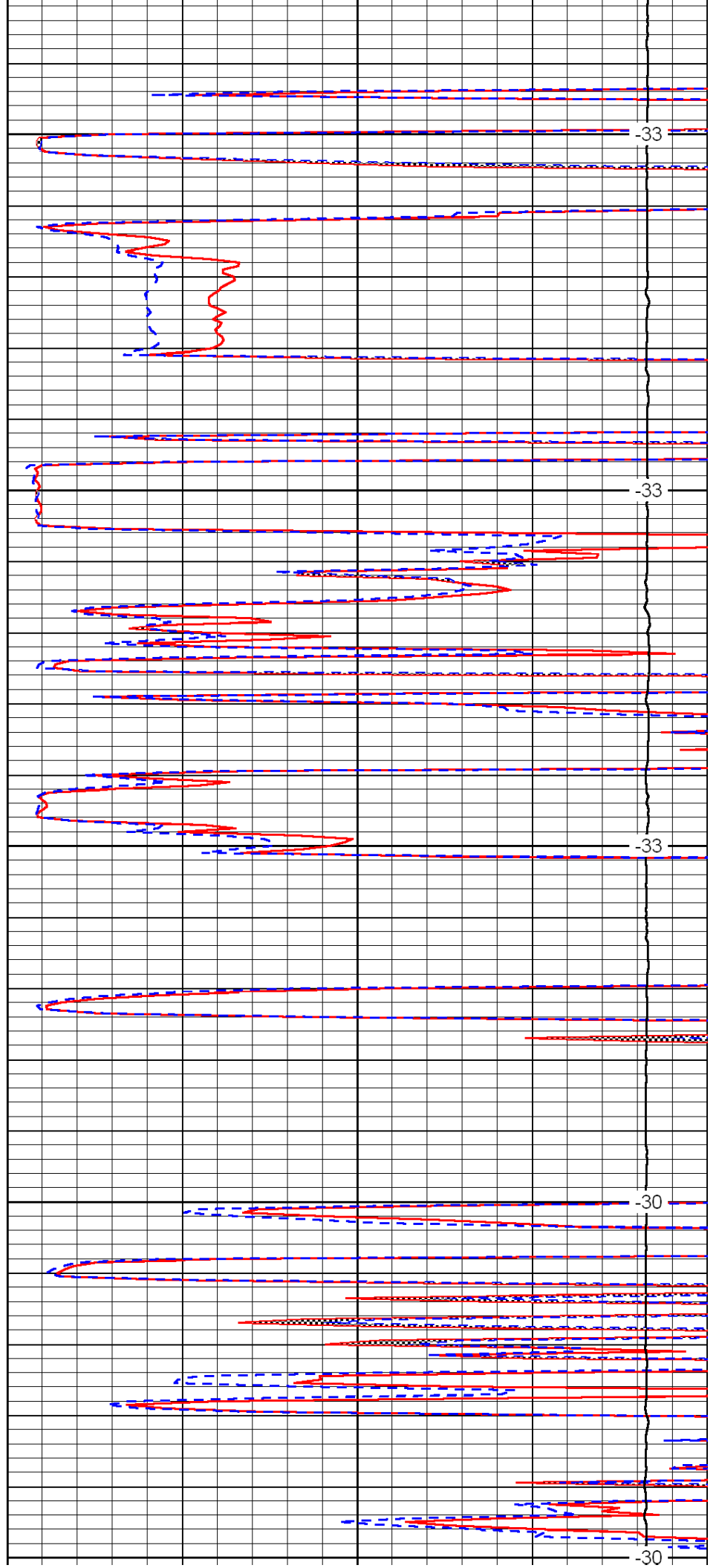
4150

4200

4250

4300

4350



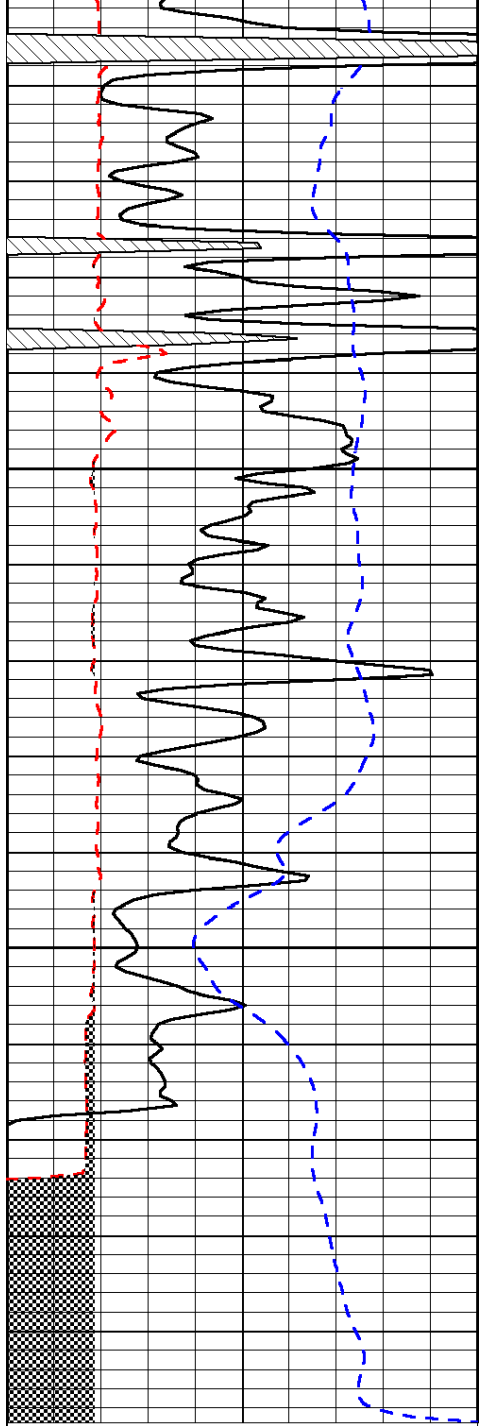
-33

-33

-33

-30

-30

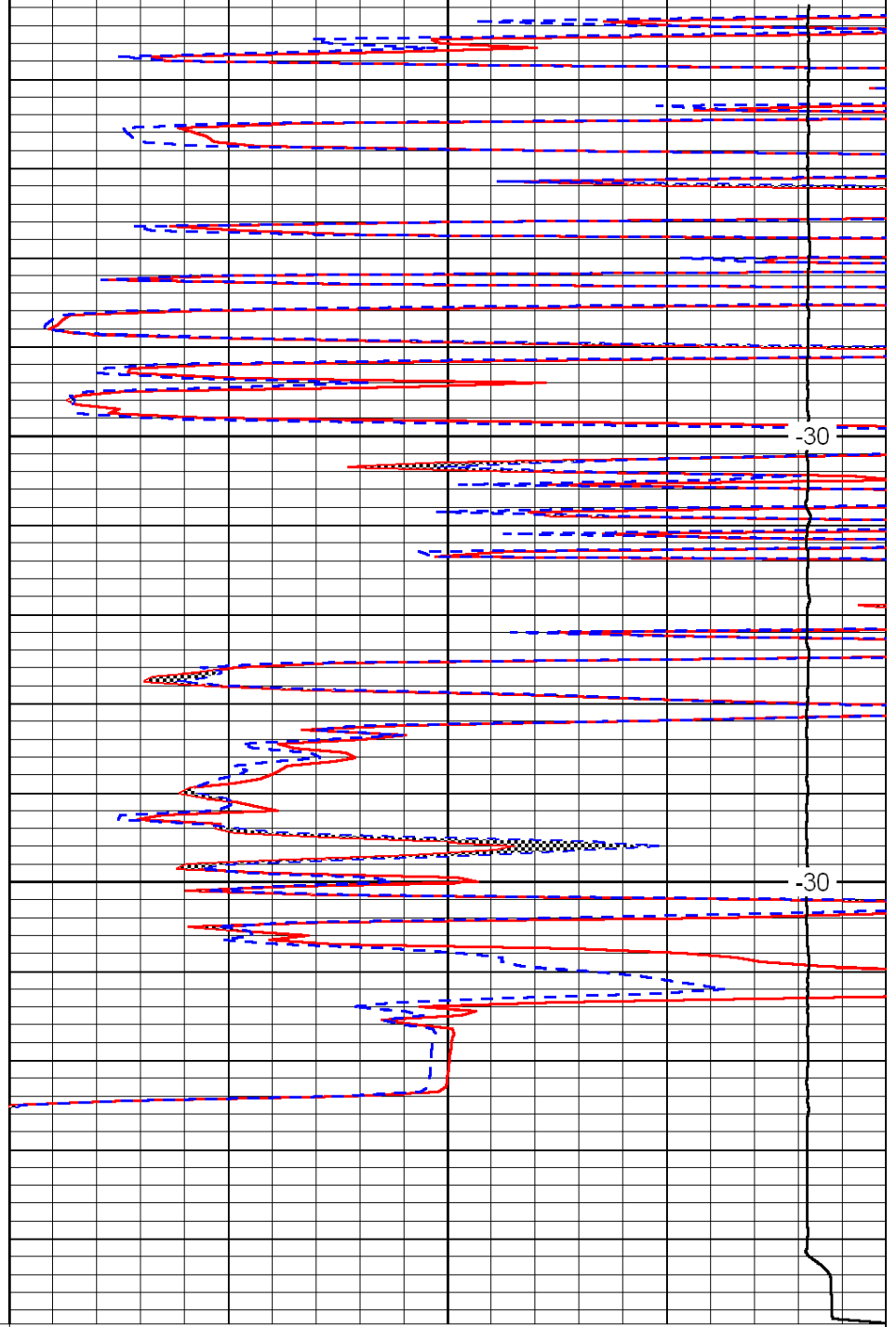


0	Gamma Ray	150
6	Micro Log Caliper (GAPI)	16
-200	SP (mV)	0

4400

4450

4500



0	Micro Inverse 1 X 1	40
0	Micro Normal 2"	40
15000	Line Weight	0

LSPD