



Dual Induction Log

DIGITAL LOG (785) 625-3858

API No.	15-109-20,932-00-00		
Company	Shakespeare Oil Company, Inc.		
Well	Ottley No. 3-14		
Field			
County	Logan	State	Kansas
Location	1,180' FNL & 2,230' FEL		
Sec:	14	Twp:	14S Rge: 32W
Permanent Datum	Ground Level	Elevation	2814
Log Measured From	Kelly Bushing	5 Ft. Above Perm. Datum	
Drilling Measured From	Kelly Bushing		
		Other Services	CNL/CDL MEL/BHCS
		Elevation	K.B. 2819 D.F. 2814 G.L. 2814

Date	7/30/2010	
Run Number	One	
Depth Driller	4499	
Depth Logger	4492	
Bottom Logged Interval	4491	
Top Log Interval	200	
Casing Driller	8.625 @ 218	
Casing Logger	219	
Bit Size	7.875	
Type Fluid in Hole	Chemical	
Salinity, ppm CL	4400	
Density / Viscosity	9.0	53
pH / Fluid Loss	10.0	8.8
Source of Sample	Flowline	
Rm @ Meas. Temp	1.1	@ 85
Rmf @ Meas. Temp	.83	@ 85
Rmc @ Meas. Temp	1.49	@ 85
Source of Rmf / Rmc	Charts	
Rm @ BHT	.77	@ 121
Operating Rig Time	4 Hours	
Max Rec. Temp. F	121	
Equipment Number	10	
Location	Hays	
Recorded By	J. Long	
Witnessed By	Tim Priest	

<<< Fold Here >>>

All interpretations are opinions based on inferences from electrical or other measurements and we cannot and do not guarantee the accuracy or correctness of any interpretation, and we shall not, except in the case of gross or willful negligence on our part, be liable or responsible for any loss, costs, damages, or expenses incurred or sustained by anyone resulting from any interpretation made by any of our officers, agents or employees. These interpretations are also subject to our general terms and conditions set out in our current Price Schedule.

Comments

Thank you for using Log-Tech, Inc.
(785) 625-3858

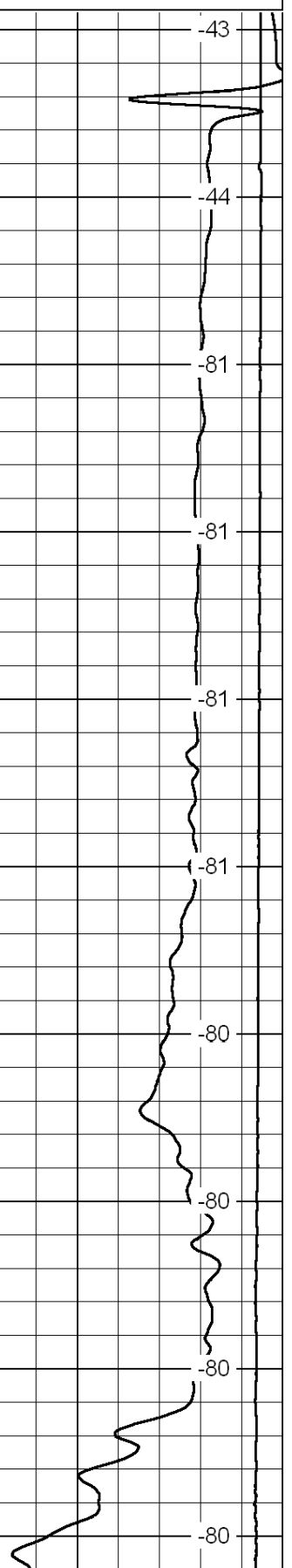
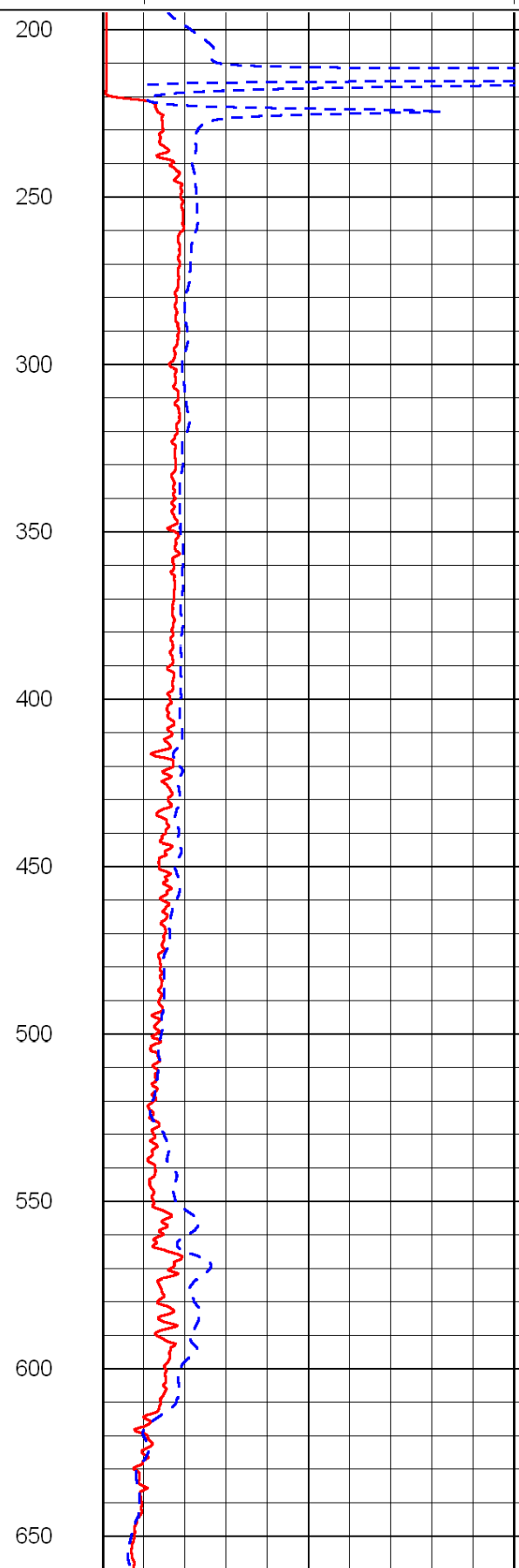
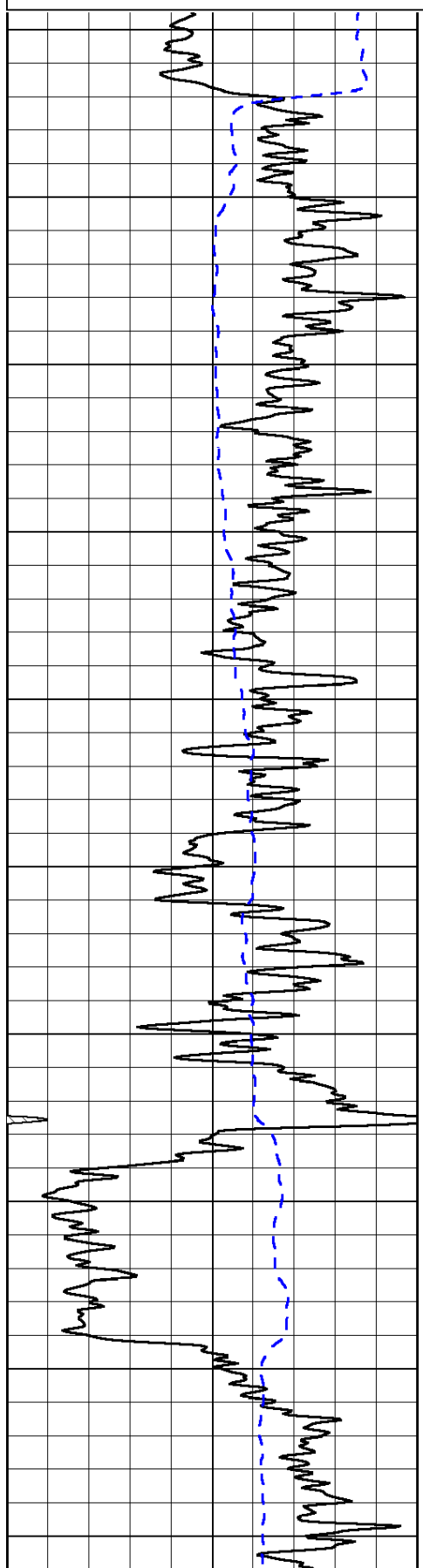
Oakley, South to Monument Rock Sign, 1 East, 1 North, West and South Into

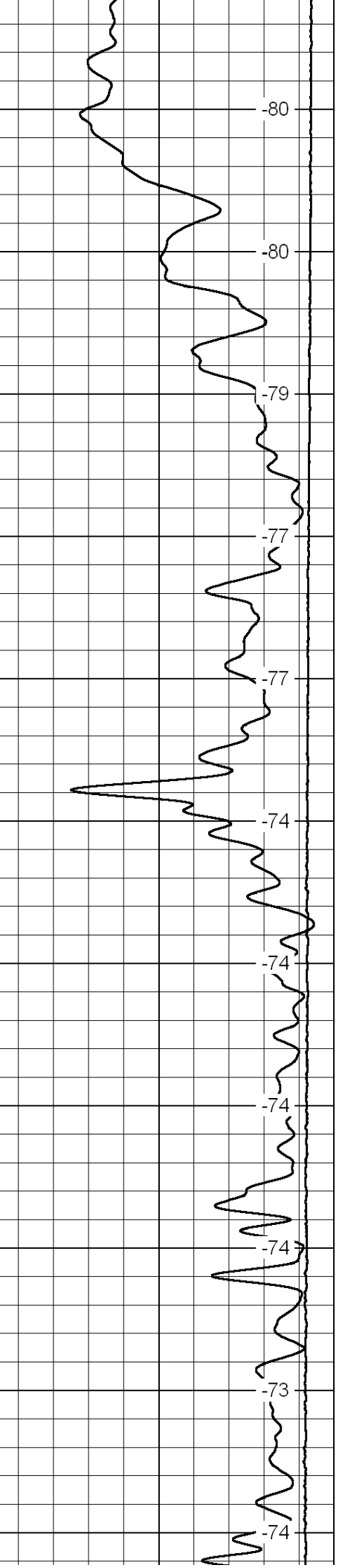
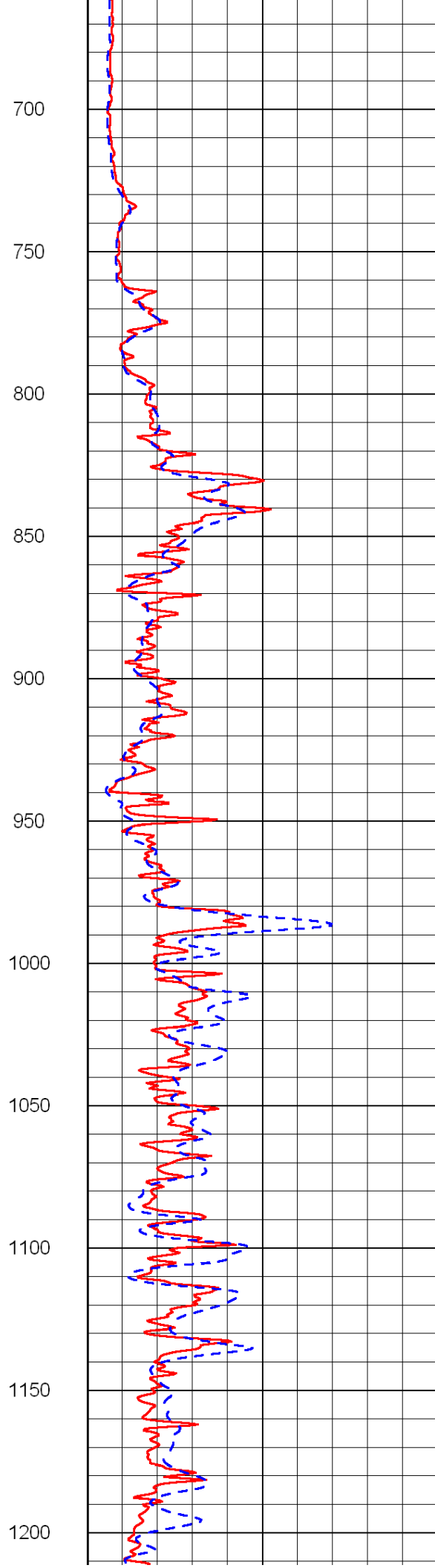
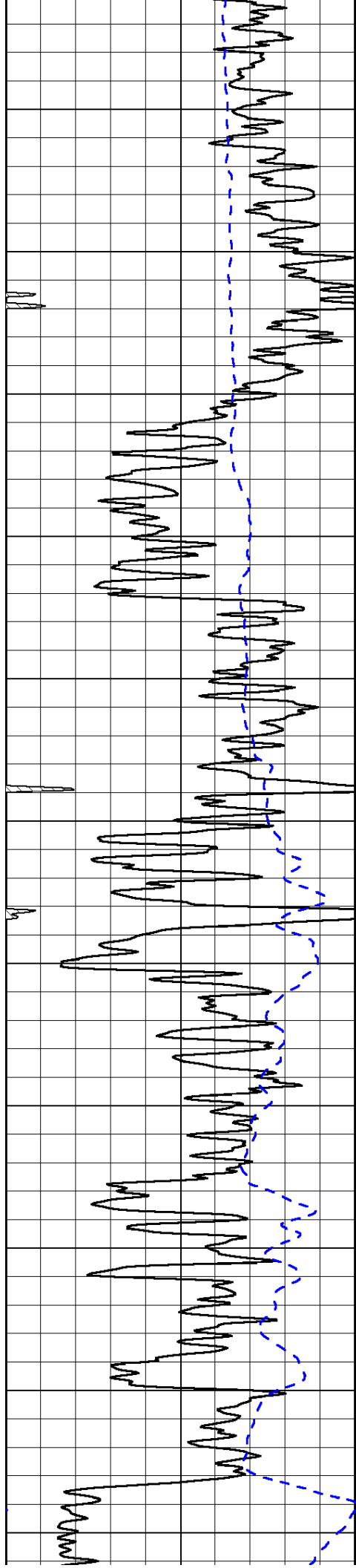
Database File: c:\warrior\data\shakespeare_ottley no. 3-14\shakehd.db
 Dataset Pathname: dil/shkpstck
 Presentation Format: dil2in
 Dataset Creation: Sat Jul 31 00:50:36 2010
 Charted by: Depth in Feet scaled 1:600

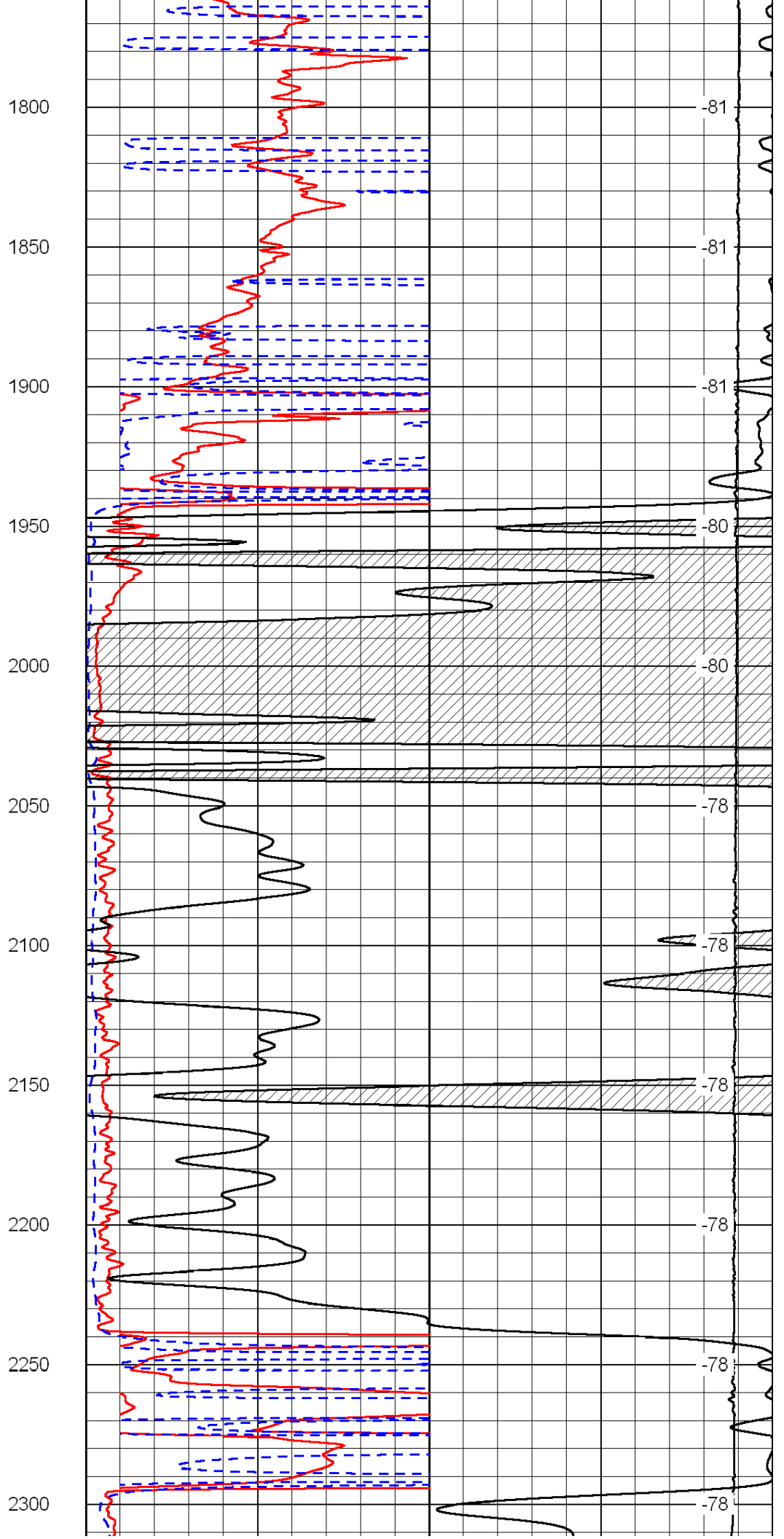
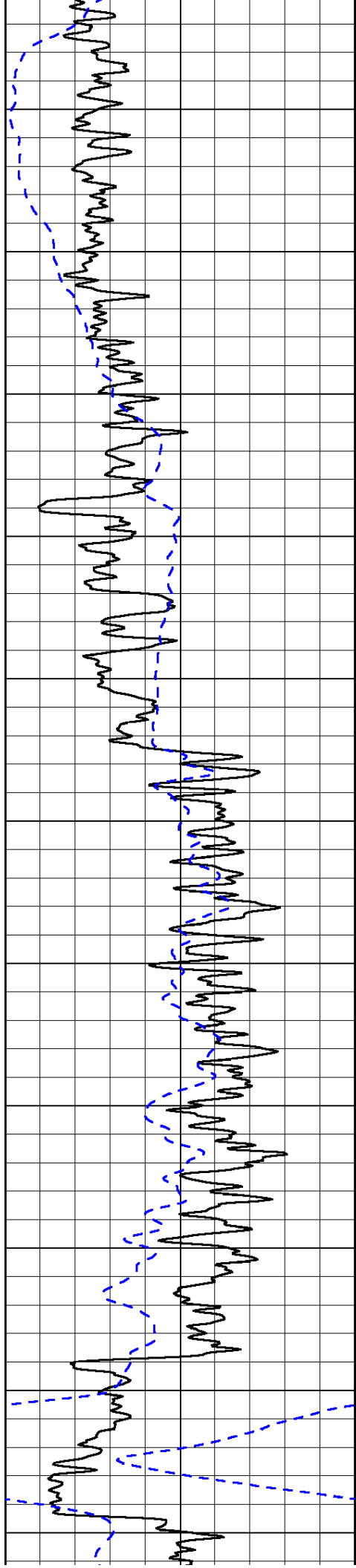
0	Gamma Ray	150
-200	SP (mV)	0

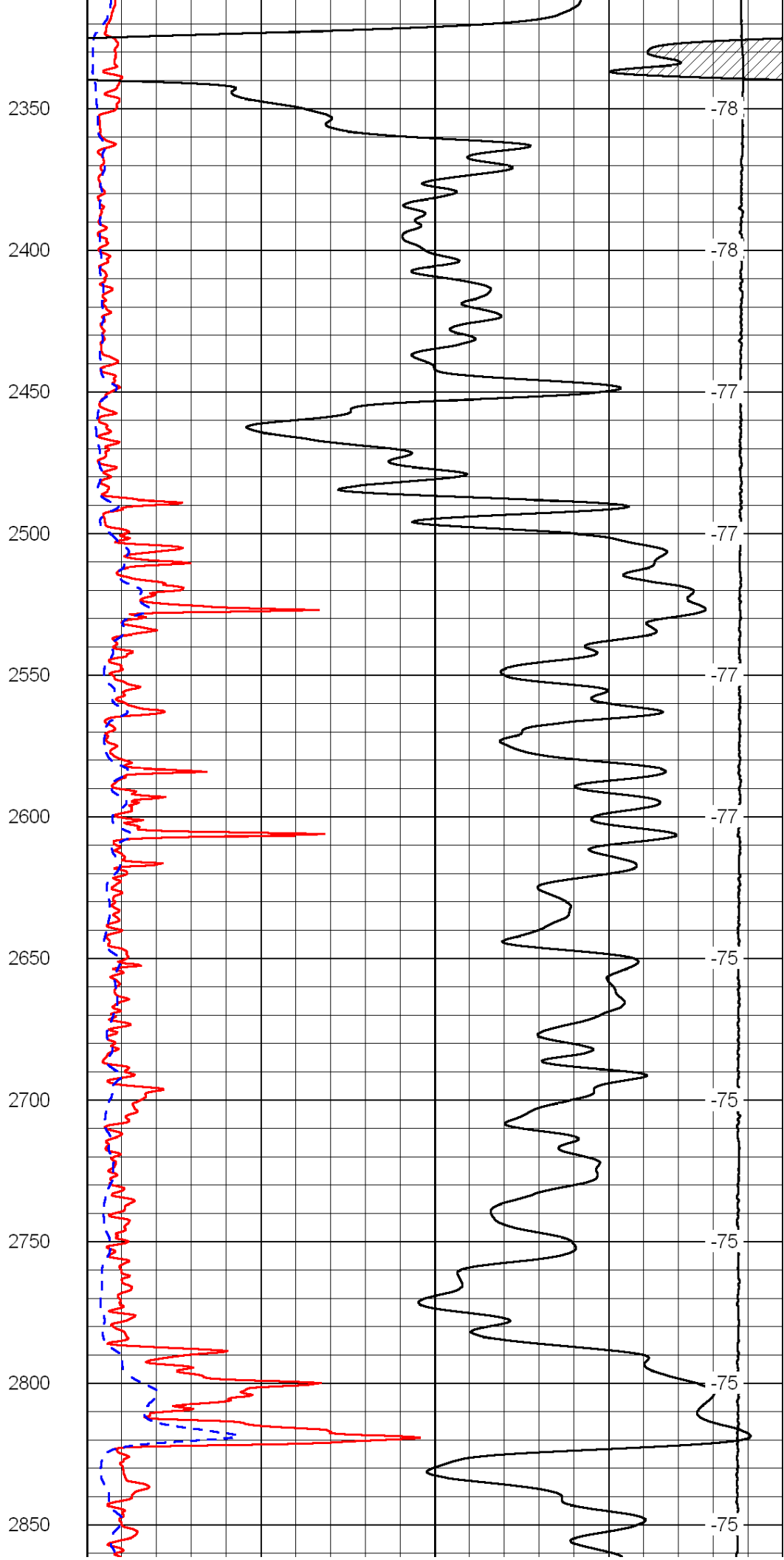
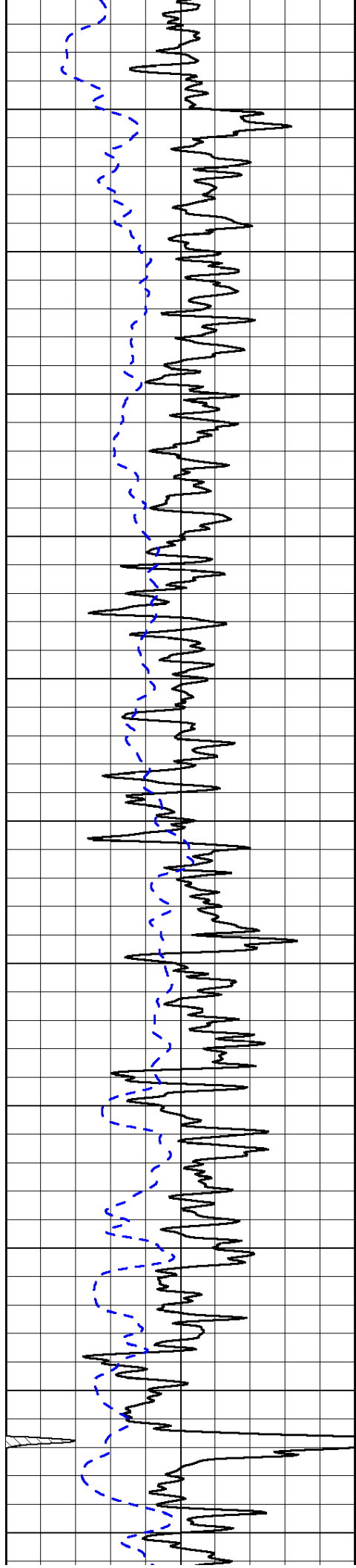
0	Shallow Resistivity	50
0	Deep Resistivity	50
1000	Conductivity	0
15000	Line Tension	0
50	Shallow Resistivity	500
50	Deep Resistivity	500

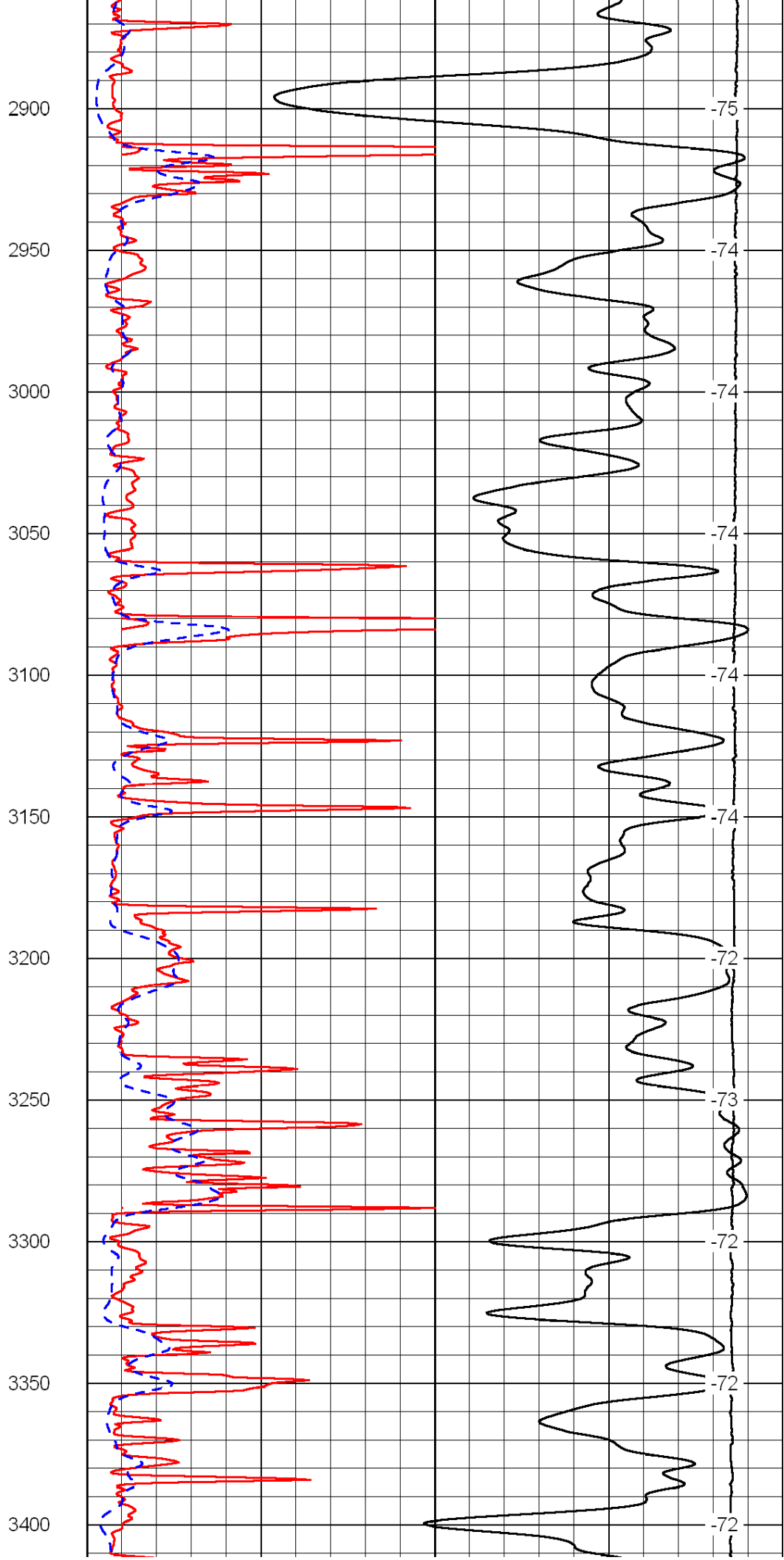
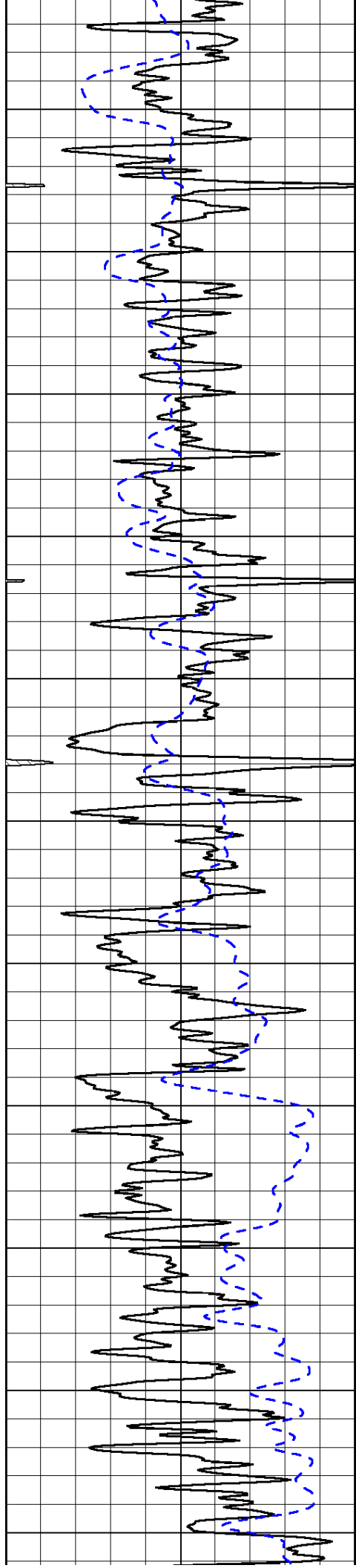
LSPD

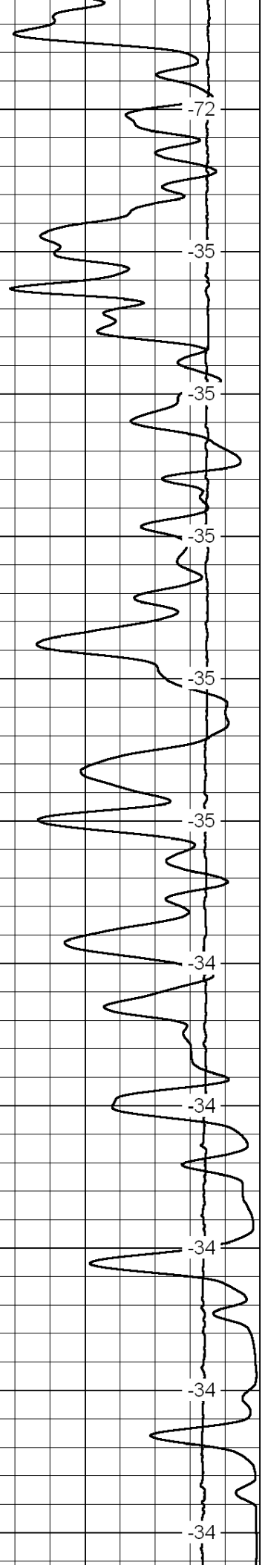
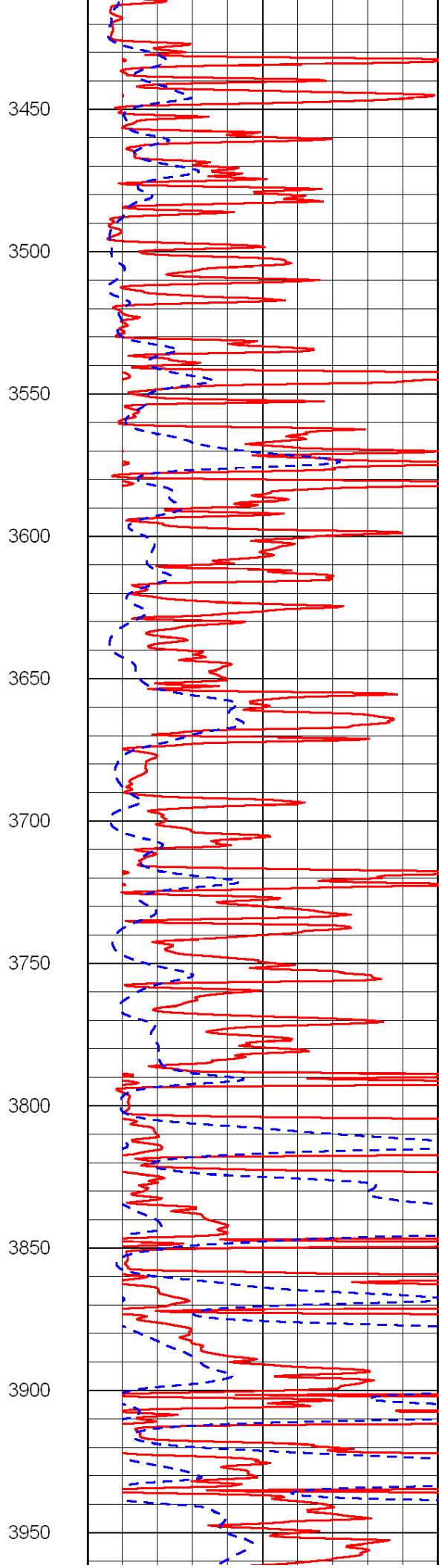
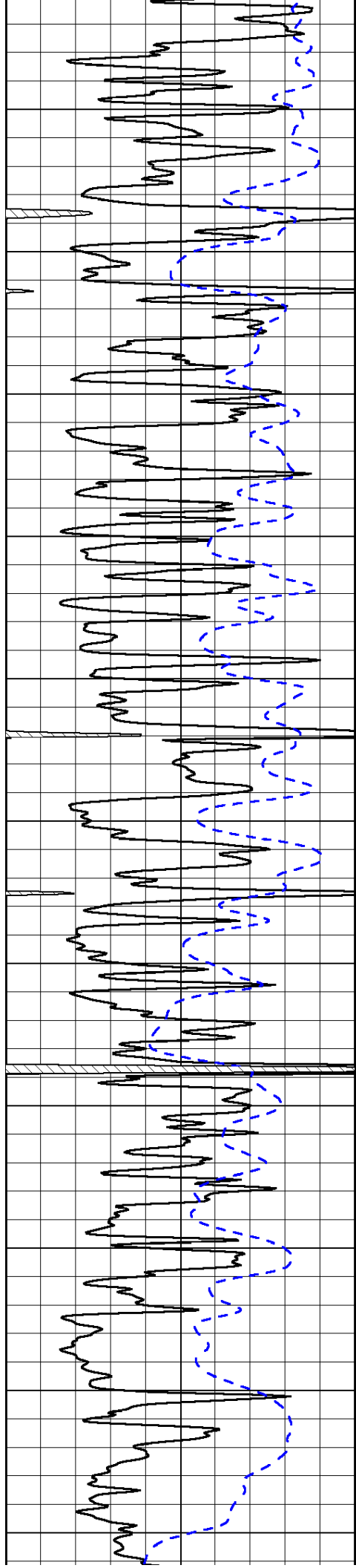


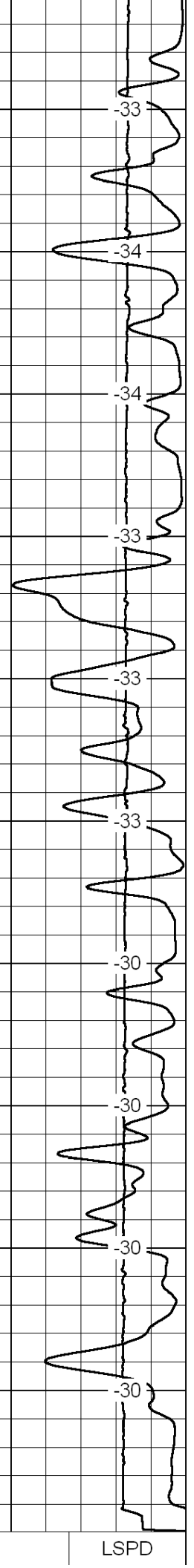
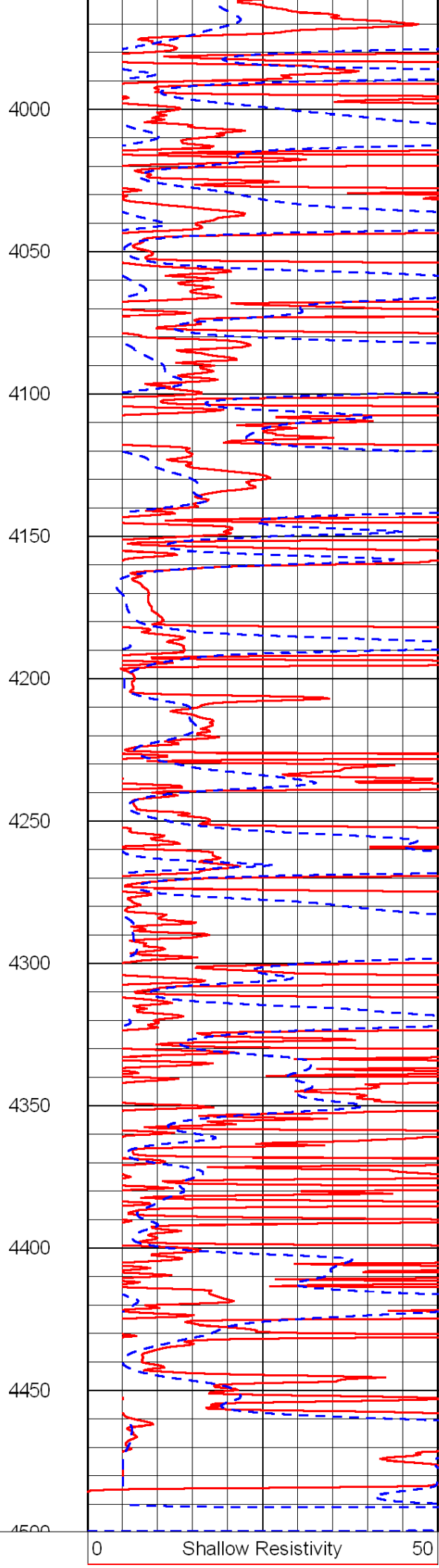
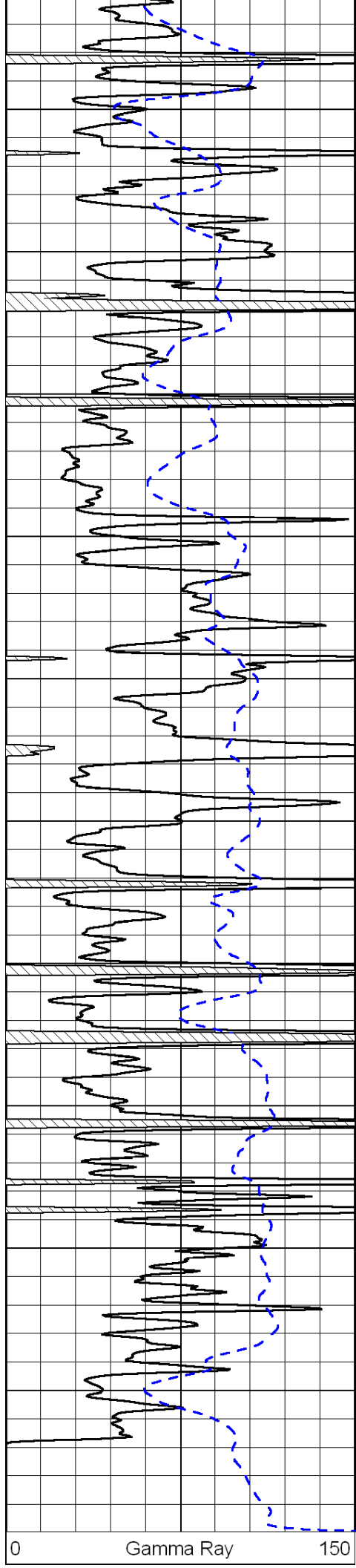












-200	SP (mV)	0
------	---------	---

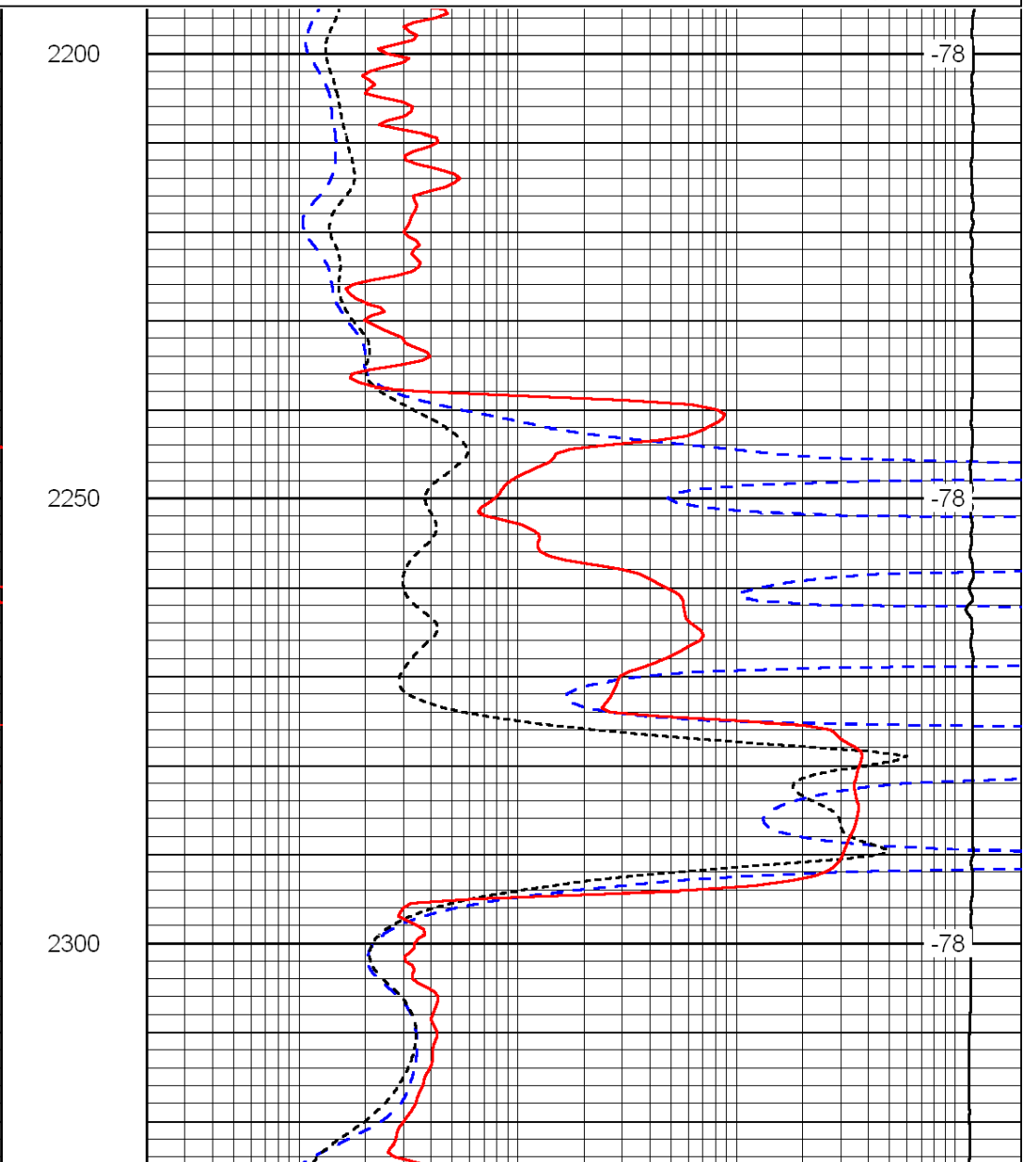
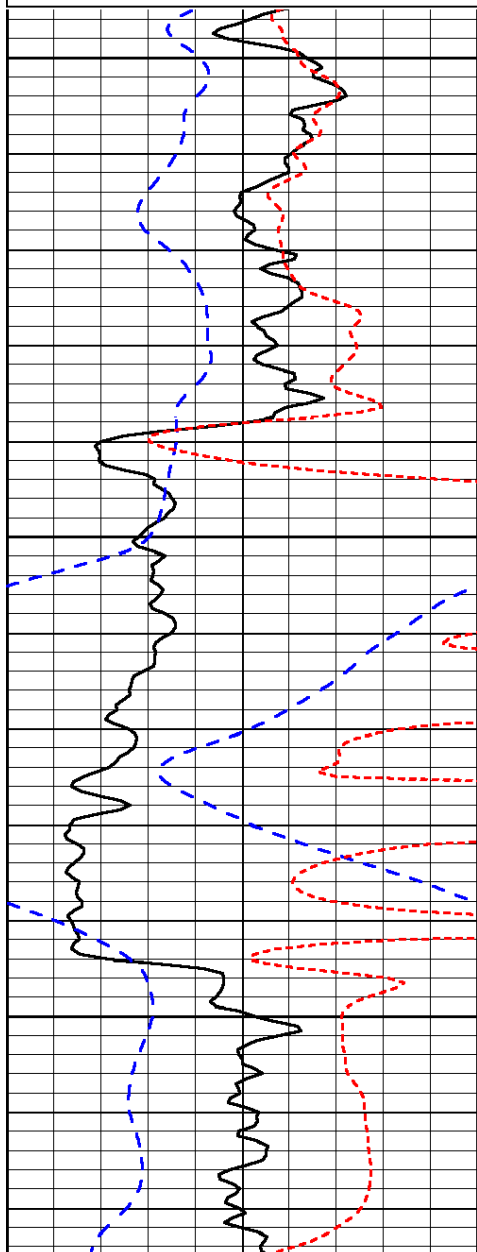
0	Deep Resistivity	50
1000	Conductivity	0
15000	Line Tension	0
50	Shallow Resistivity	500
50	Deep Resistivity	500

Database File: c:\warrior\data\shakespeare_ottley no. 3-14\shakehd.db
 Dataset Pathname: dil/shkpstck
 Presentation Format: dil
 Dataset Creation: Sat Jul 31 00:50:36 2010
 Charted by: Depth in Feet scaled 1:240

0	Gamma Ray	150
-200	SP (mV)	0
-160	Rxo / Rt	40

0.2	Deep Resistivity	2000
0.2	Medium Resistivity	2000
0.2	Shallow Resistivity	2000
15000	Line Tension	0

LSPD



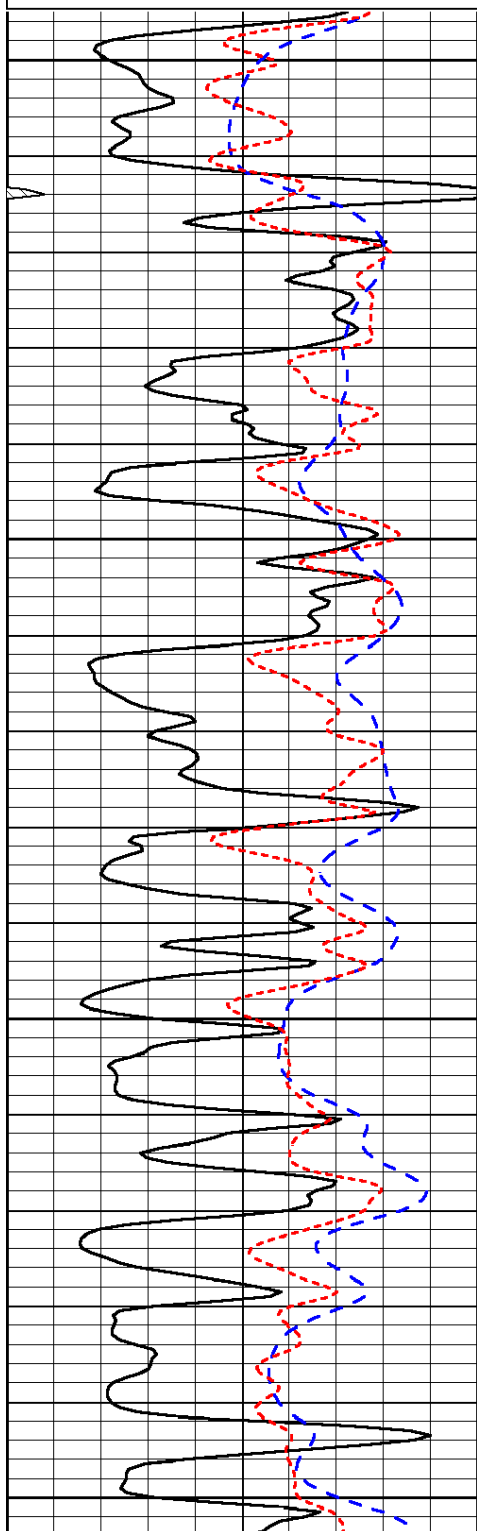
0	Gamma Ray	150
-200	SP (mV)	0
-160	Rxo / Rt	40

0.2	Deep Resistivity	2000
0.2	Medium Resistivity	2000
0.2	Shallow Resistivity	2000

Database File: c:\warrior\data\shakespeare_ottley no. 3-14\shakehd.db
 Dataset Pathname: dil/shkpstck
 Presentation Format: dil
 Dataset Creation: Sat Jul 31 00:50:36 2010
 Charted by: Depth in Feet scaled 1:240

0	Gamma Ray	150
-200	SP (mV)	0
-160	Rxo / Rt	40

0.2	Deep Resistivity	2000
0.2	Medium Resistivity	2000
0.2	Shallow Resistivity	2000
15000	Line Tension	0

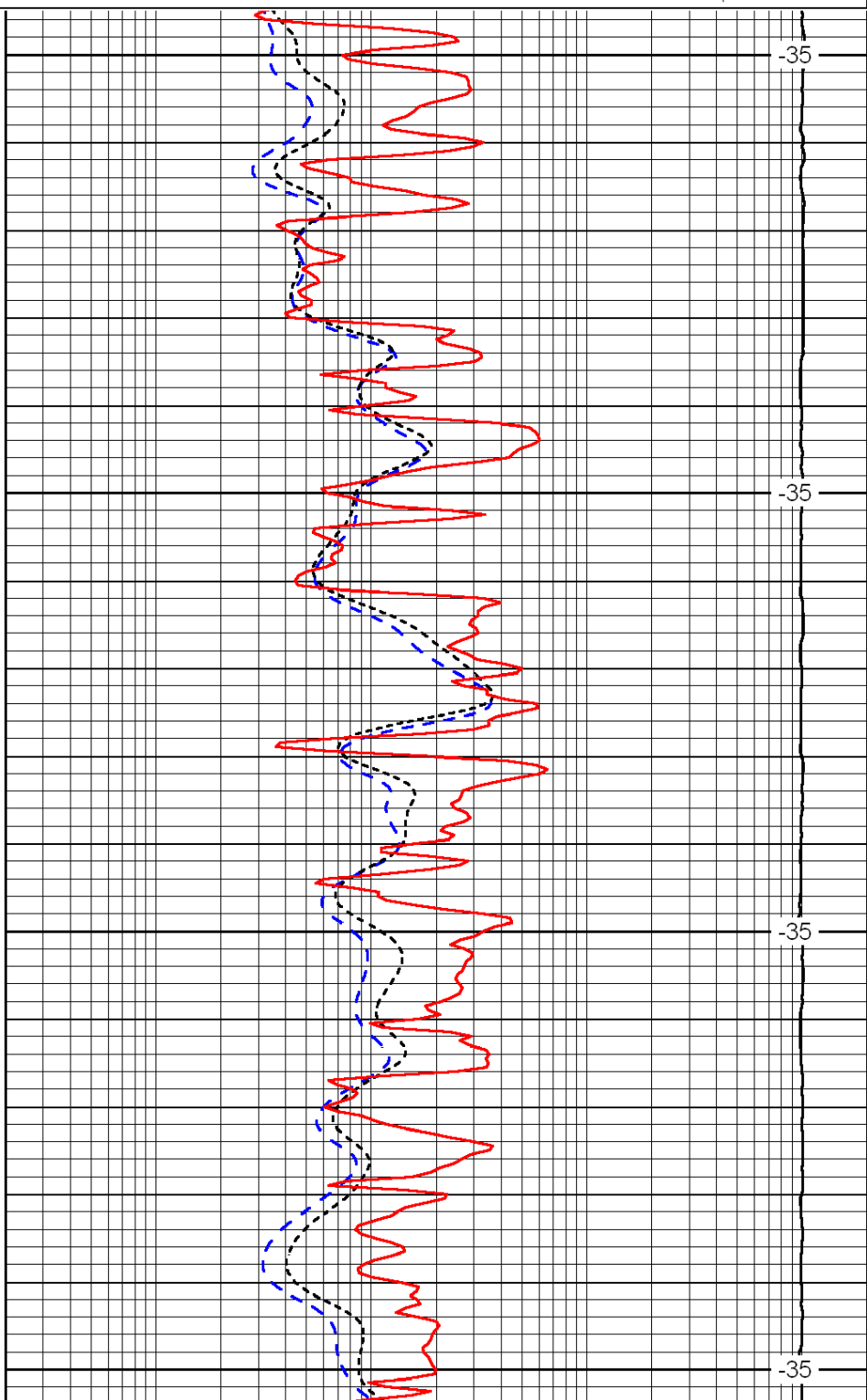


3500

3550

3600

3650

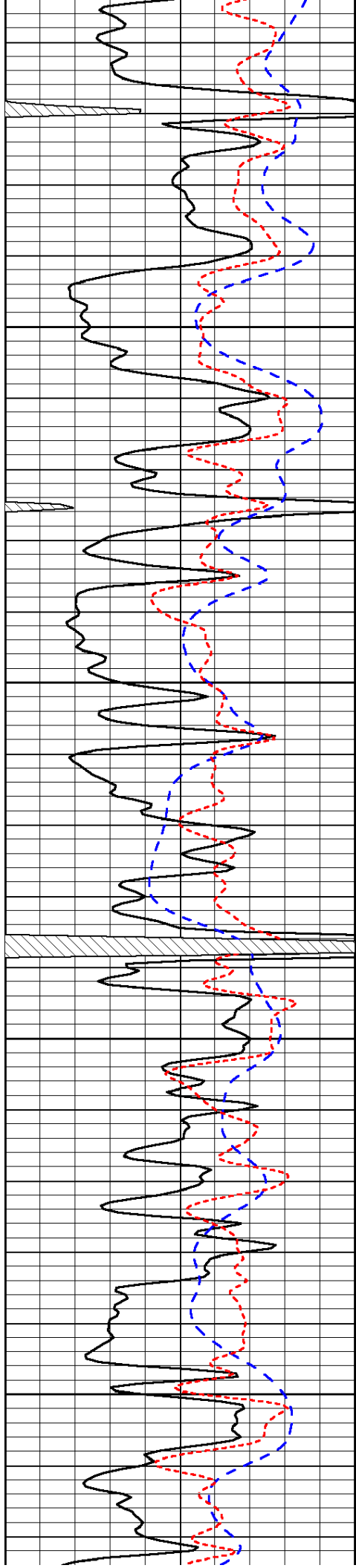


-35

-35

-35

-35



3700

3750

3800

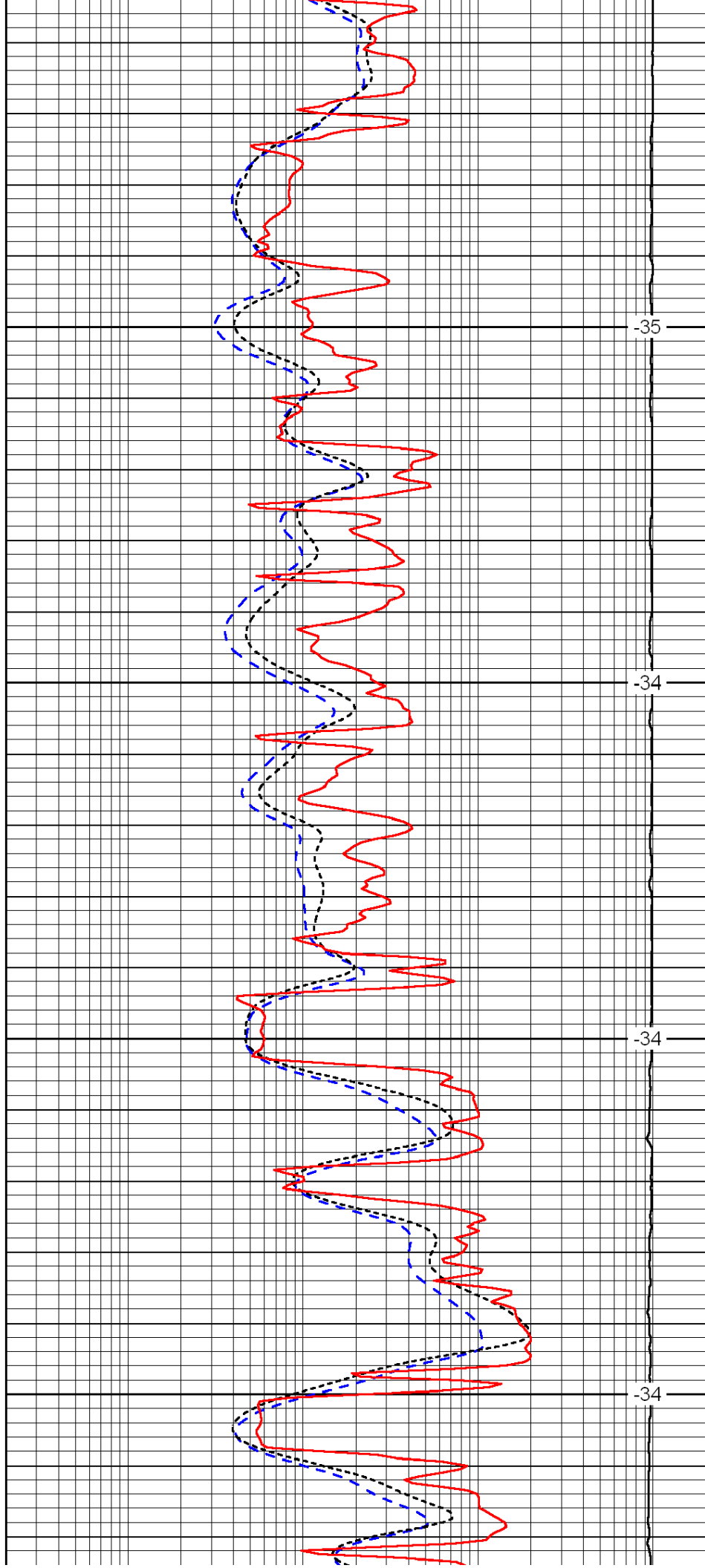
3850

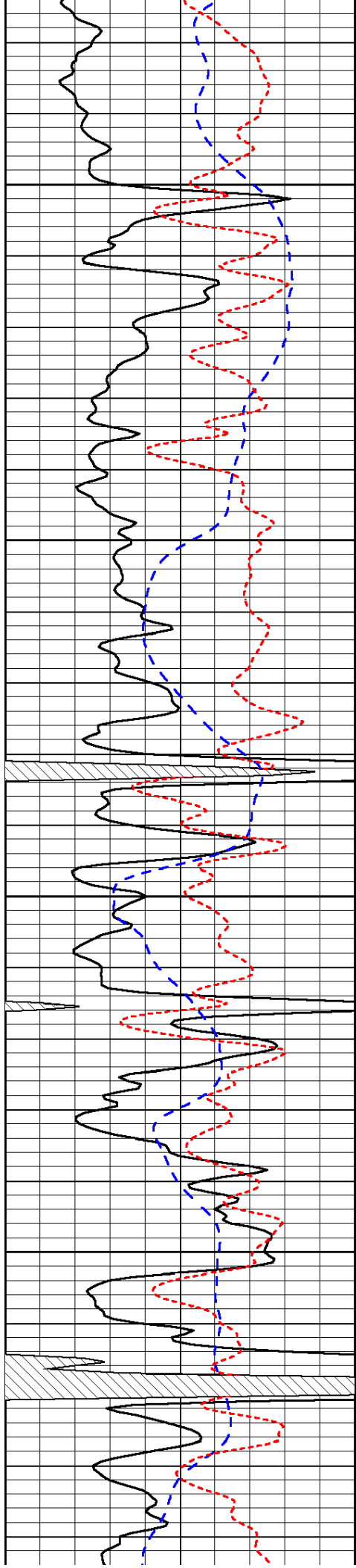
-35

-34

-34

-34



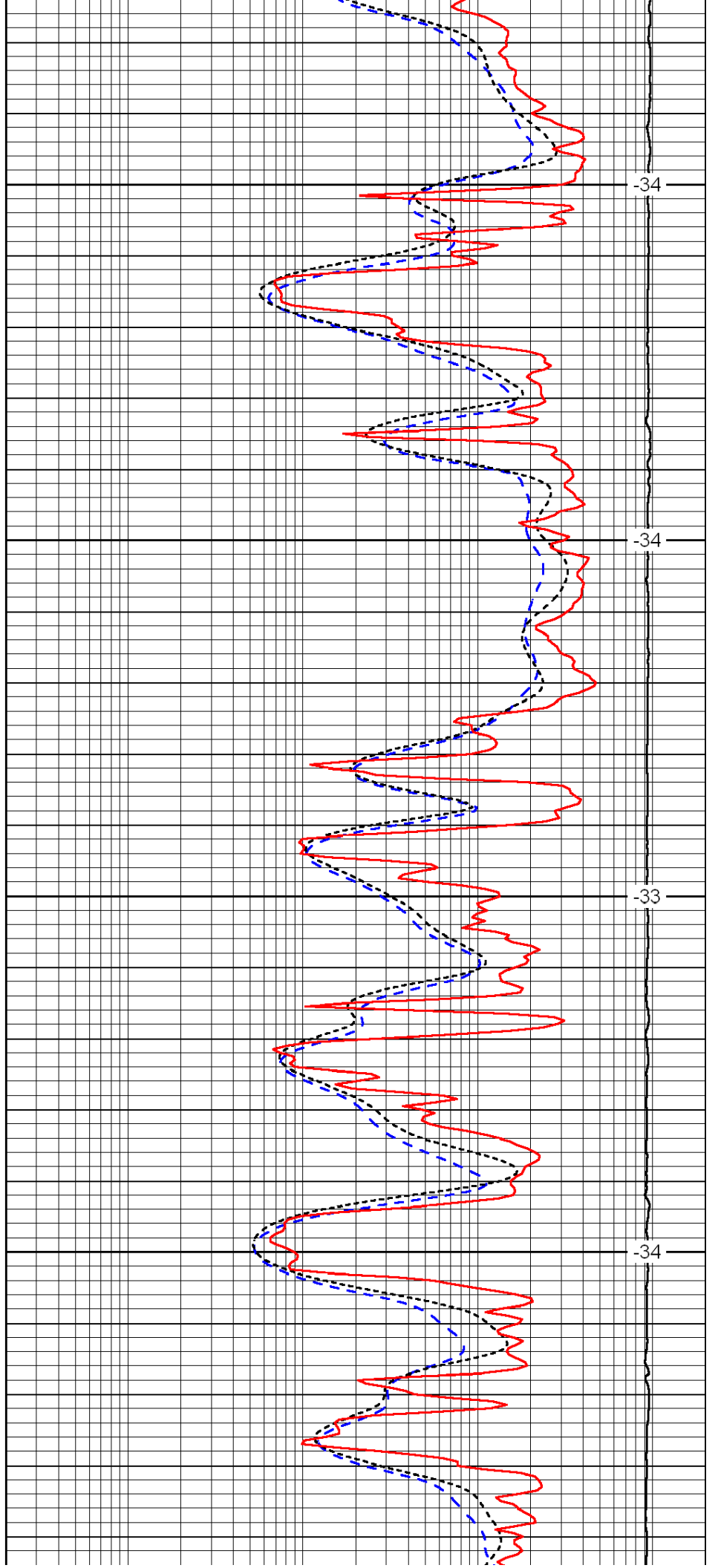


3900

3950

4000

4050

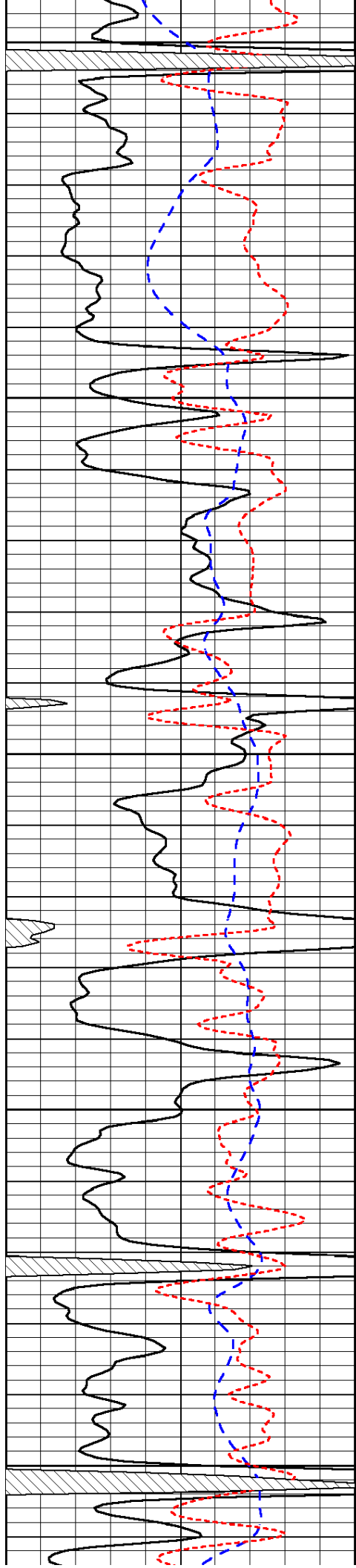


-34

-34

-33

-34



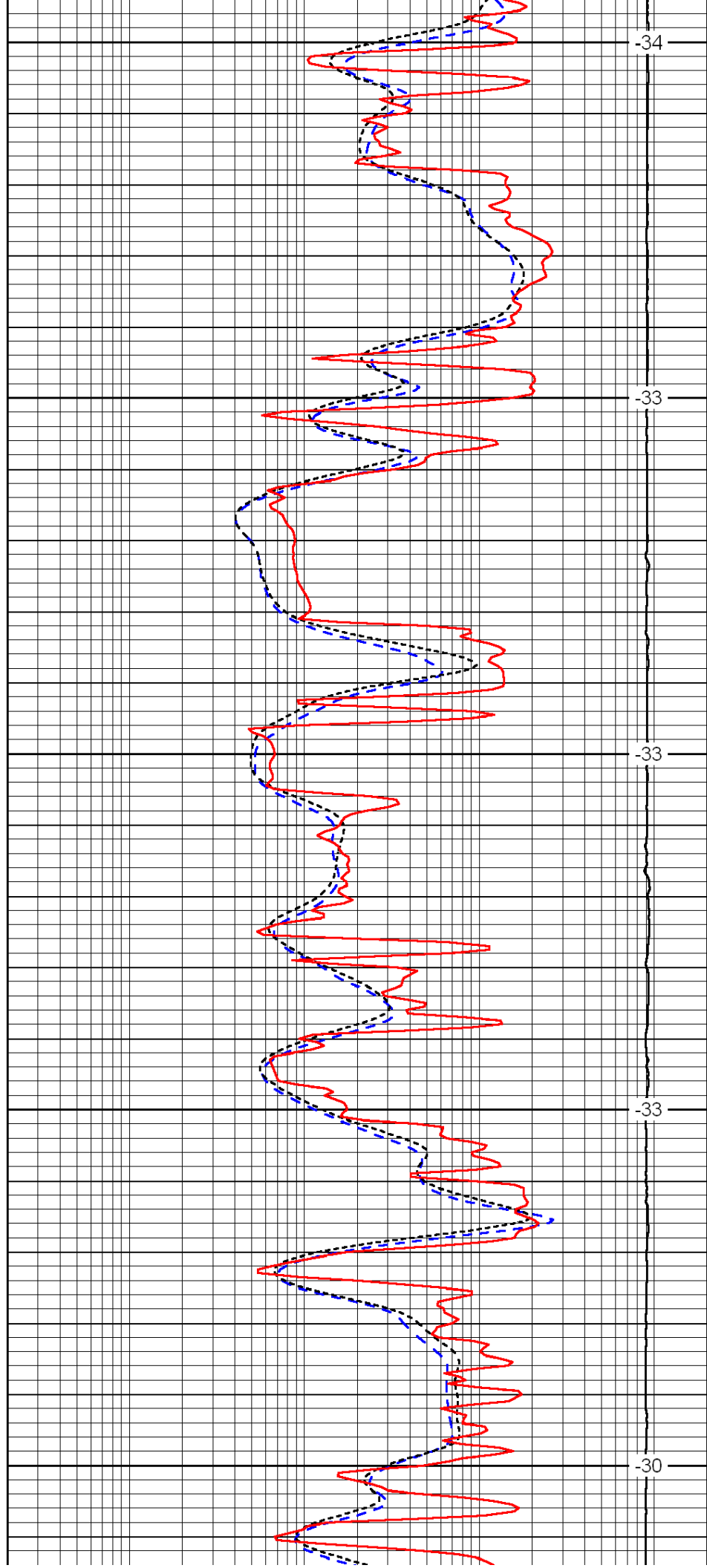
4100

4150

4200

4250

4300



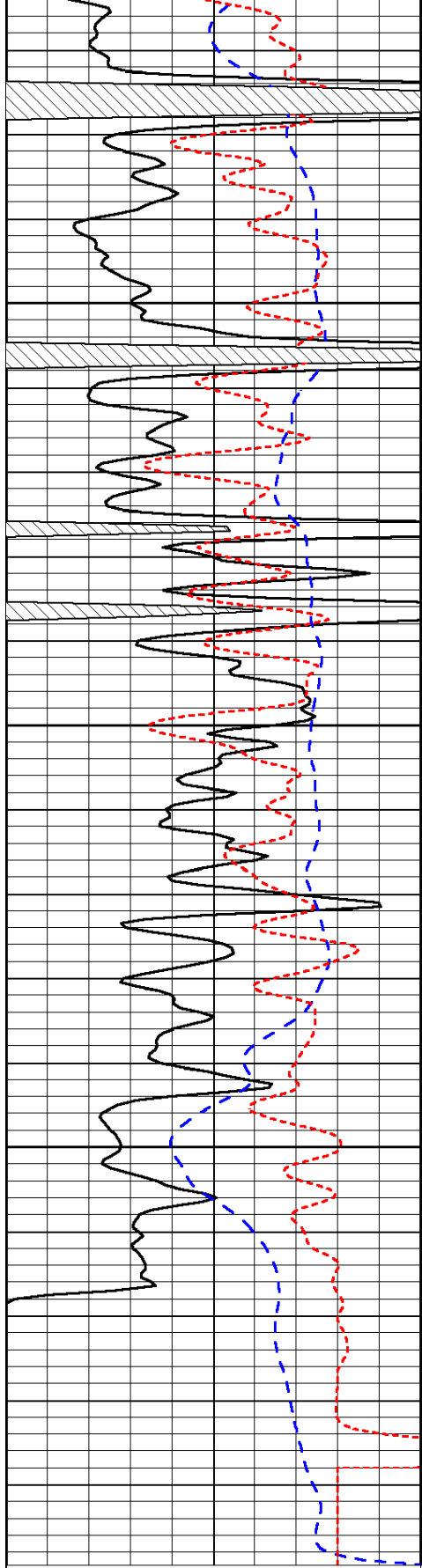
-34

-33

-33

-33

-30



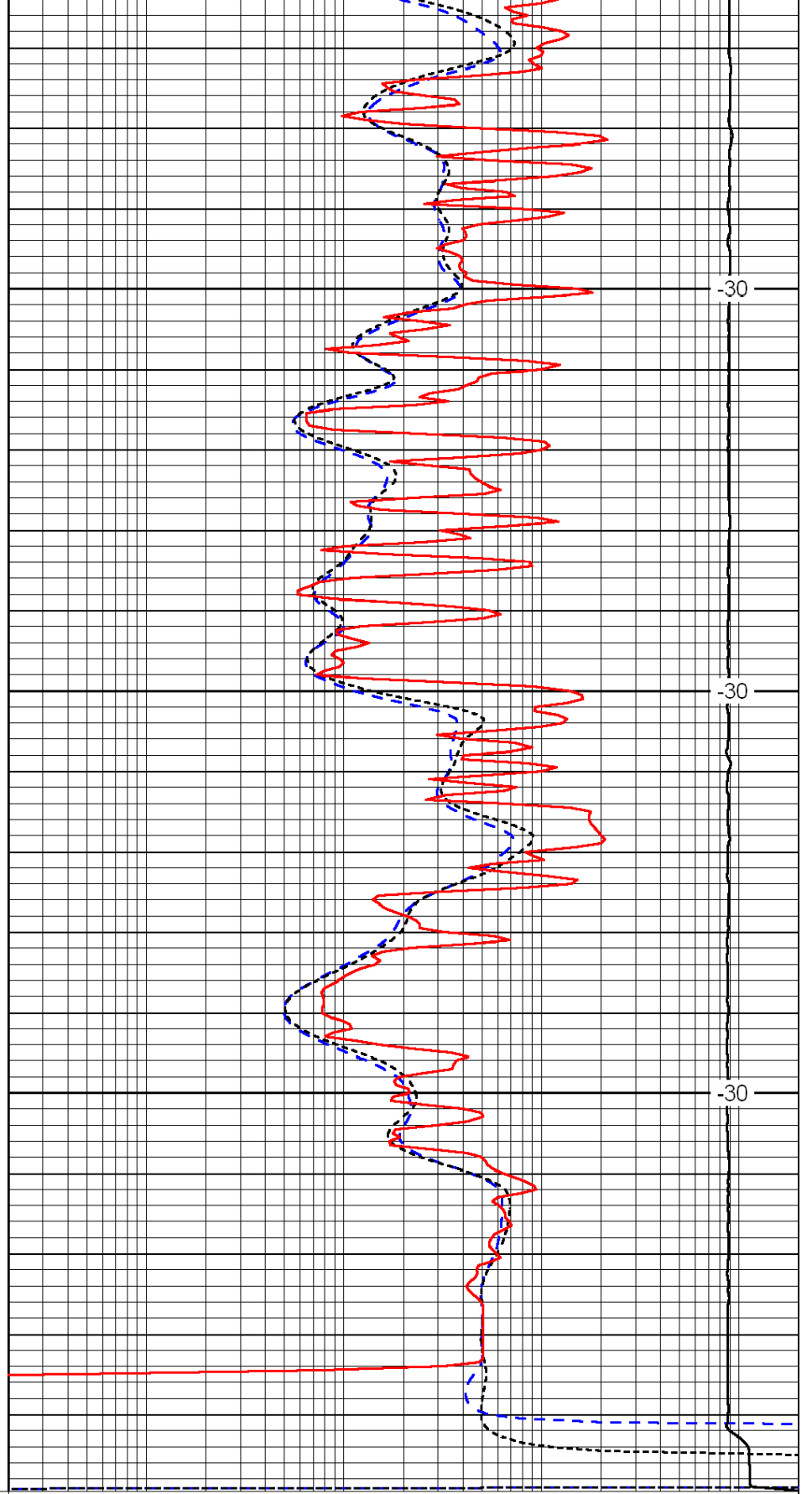
0	Gamma Ray	150
-200	SP (mV)	0
-160	Rxo / Rt	40

4350

4400

4450

4500



-30

-30

-30

0.2	Deep Resistivity	2000
0.2	Medium Resistivity	2000
0.2	Shallow Resistivity	2000
15000	Line Tension	0

LSPD