



**DIGITAL LOG** (785) 625-3858

**Dual Induction Log**

API No.	15-109-20919-00-00	
Company	Russell Oil, Inc	
Well	Lee 'C' No. 1-5	
Field	Wildcat	
County	Logan	State Kansas
Location	S/2 - NE - NW - SE 2240' FSL & 1650' FEL	
Sec: 5	Twp: 13 S	Rge: 33 W
Permanent Datum	Ground Level	Elevation 2966
Log Measured From	Kelly Bushing	11 Ft. Above Perm. Datum
Drilling Measured From	Kelly Bushing	
		Other Services CNL/CDL MEL
		Elevation K.B. 2977 D.F. G.L. 2966

Date	6/22/2010
Run Number	One
Depth Driller	4508
Depth Logger	4507
Bottom Logged Interval	4506
Top Log Interval	200
Casing Driller	8.625 @ 270
Casing Logger	260
Bit Size	7.875
Type Fluid in Hole	Chemical
Salinity, ppm CL	4500
Density / Viscosity	9.4   54
pH / Fluid Loss	10.0   8.0
Source of Sample	Flowline
Rm @ Meas. Temp	1.20 @ 72
Rmf @ Meas. Temp	0.90 @ 72
Rmc @ Meas. Temp	1.62 @ 72
Source of Rmf / Rmc	Charts
Rm @ BHT	0.71 @ 121
Operating Rig Time	4 Hours
Max Rec. Temp. F	121
Equipment Number	15
Location	Hays
Recorded By	B. Becker
Witnessed By	Kevin Bailey

<<< Fold Here >>>

All interpretations are opinions based on inferences from electrical or other measurements and we cannot and do not guarantee the accuracy or correctness of any interpretation, and we shall not, except in the case of gross or willful negligence on our part, be liable or responsible for any loss, costs, damages, or expenses incurred or sustained by anyone resulting from any interpretation made by any of our officers, agents or employees. These interpretations are also subject to our general terms and conditions set out in our current Price Schedule.

**Comments**

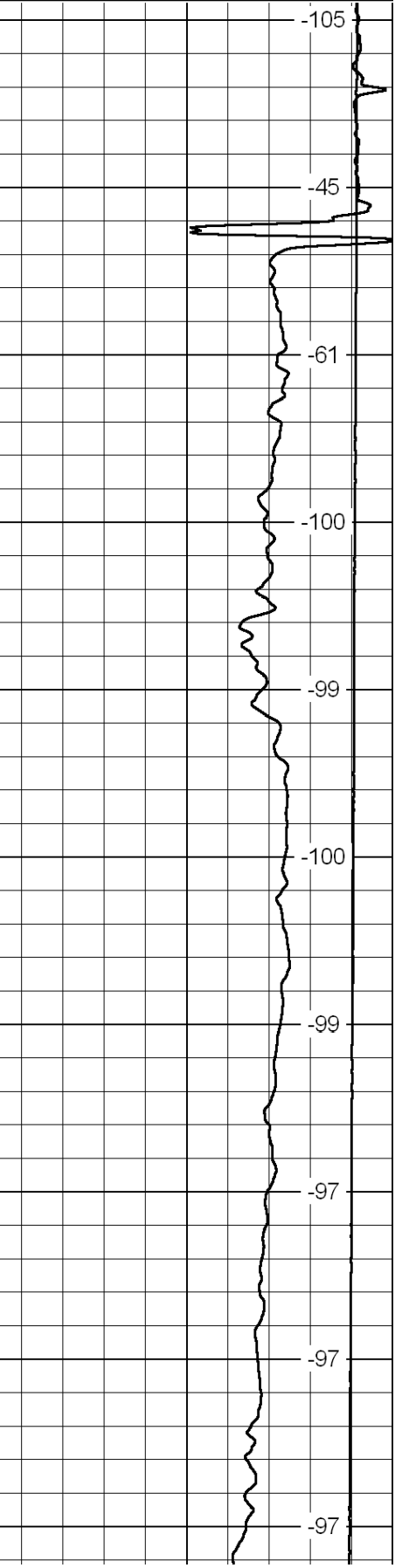
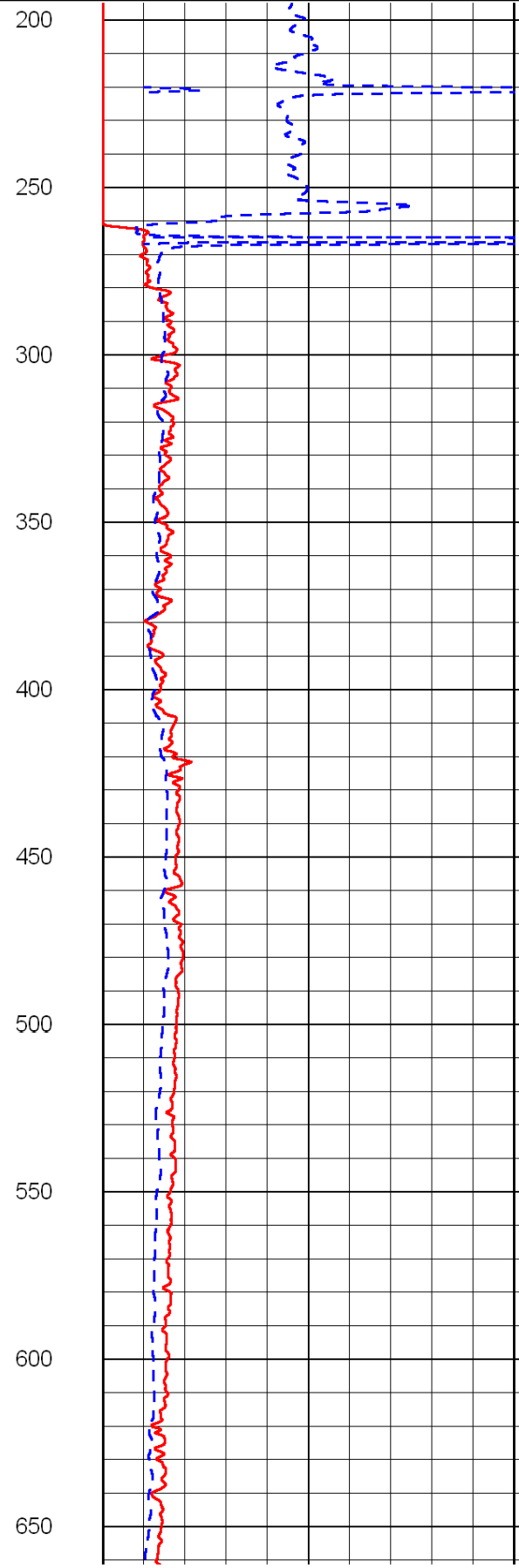
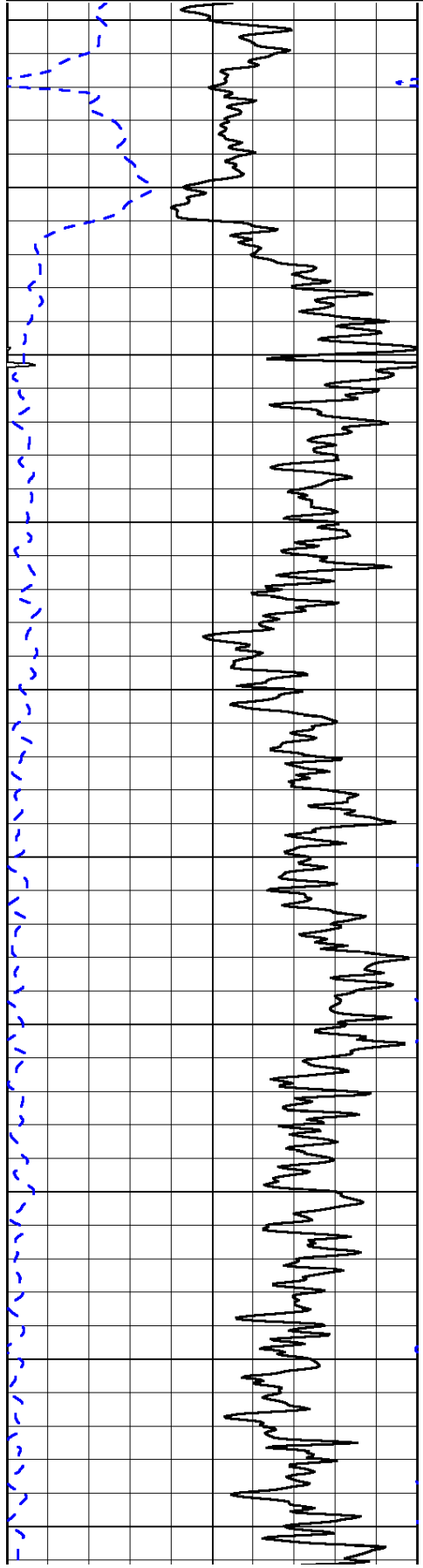
Thank you for using Log-Tech, Inc.  
 (785) 625-3858  
 Monument, Ks;  
 South to Seneca Rd;  
 3/4 East; North to location

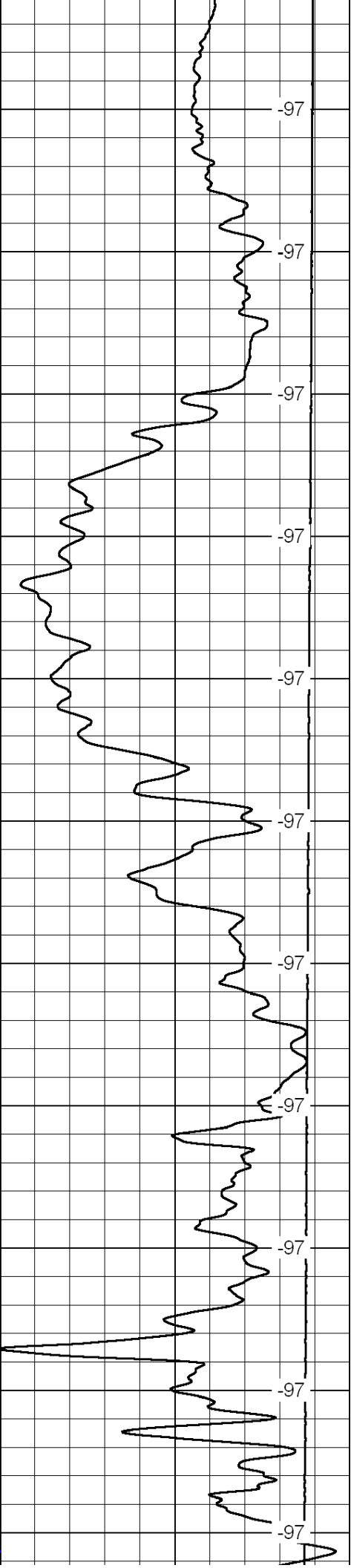
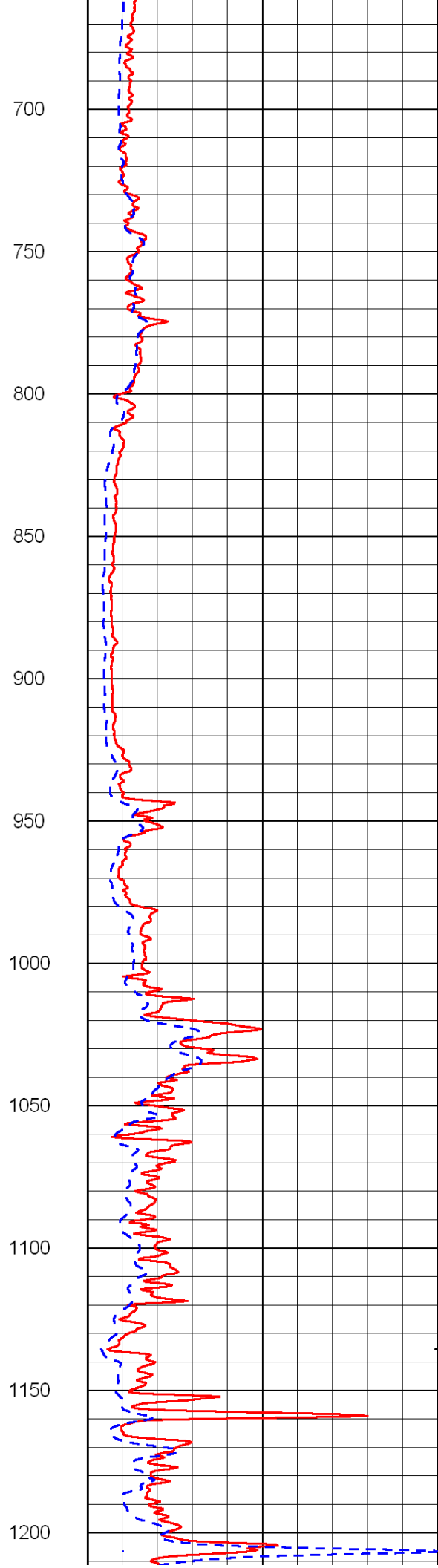
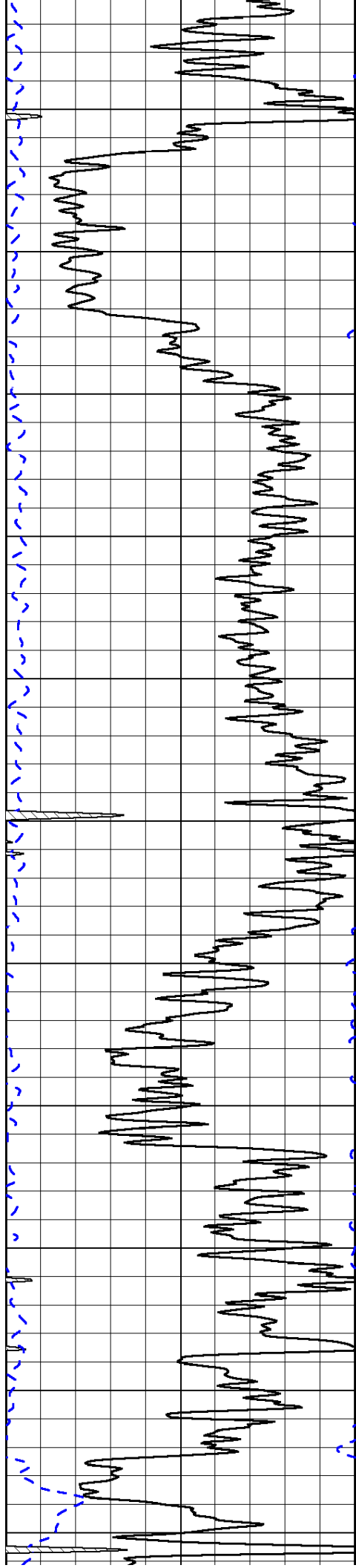
Database File: c:\warrior\data\russell\_lee 'c' no. 1-5\russellhd.db  
 Dataset Pathname: DIL/russtk  
 Presentation Format: dil2in  
 Dataset Creation: Tue Jun 22 22:04:54 2010  
 Charted by: Depth in Feet scaled 1:600

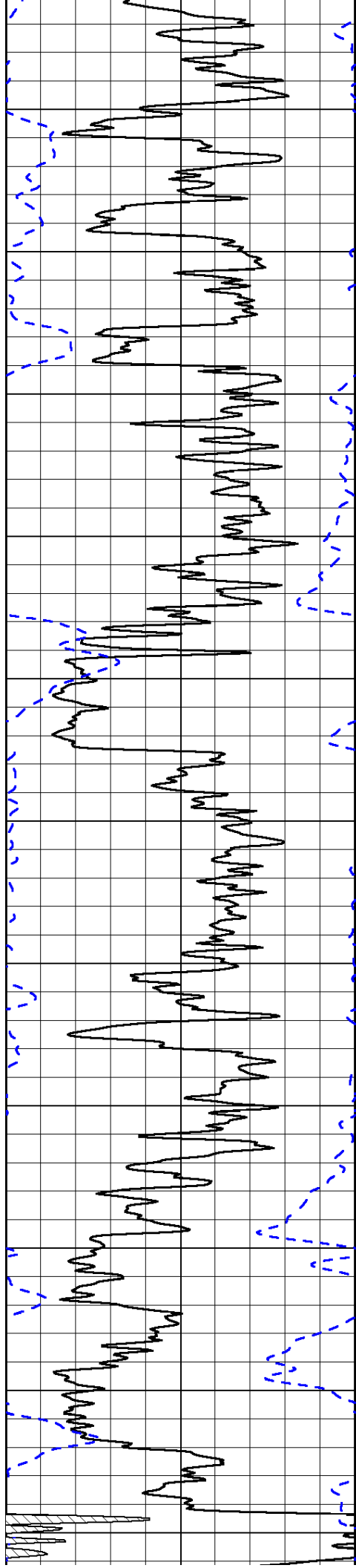
0	Gamma Ray	150
-200	SP (mV)	0

0	Shallow Resistivity	50
0	Deep Resistivity	50
1000	Conductivity	0
15000	Line Tension	0
50	Shallow Resistivity	500
50	Deep Resistivity	500

LSPD







1250

1300

1350

1400

1450

1500

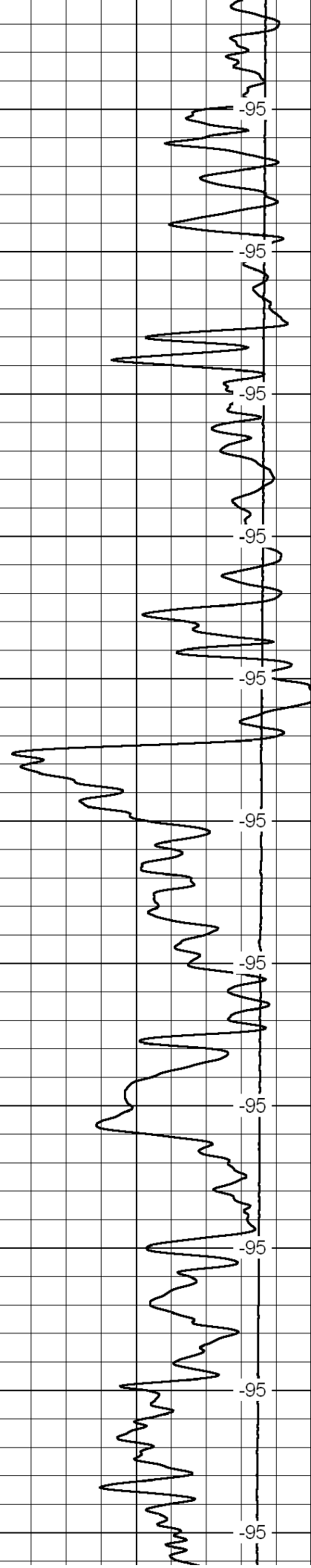
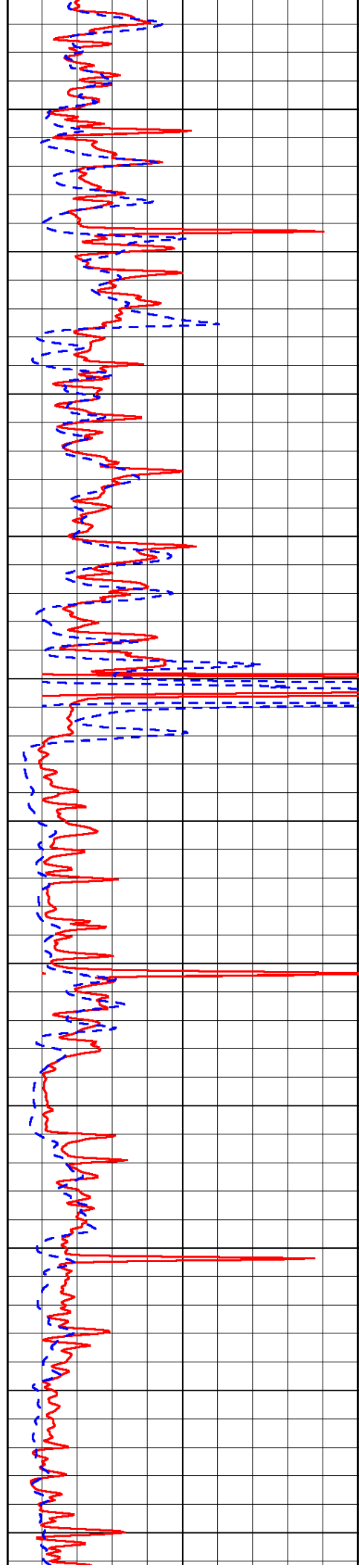
1550

1600

1650

1700

1750



-95

-95

-95

-95

-95

-95

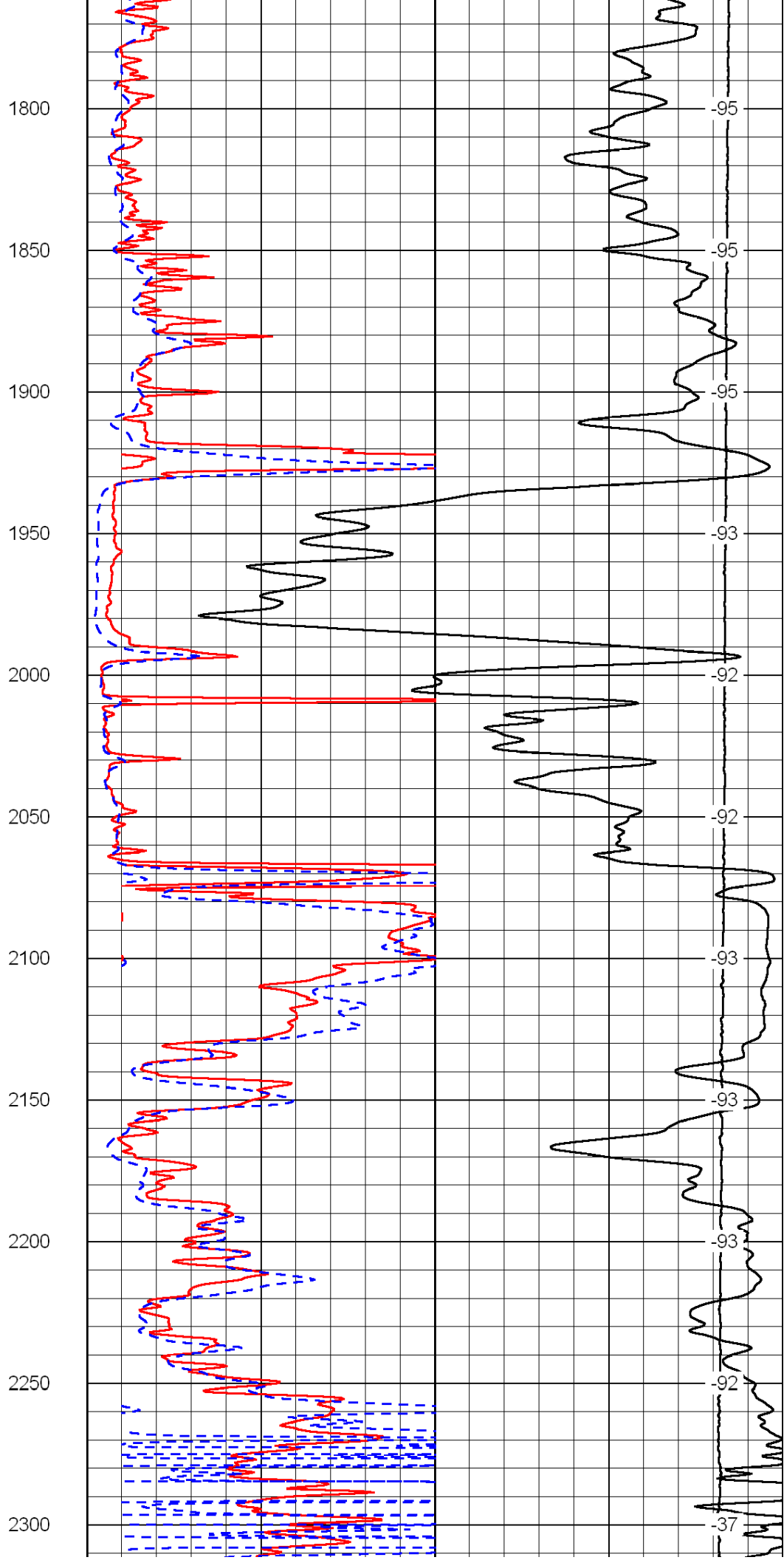
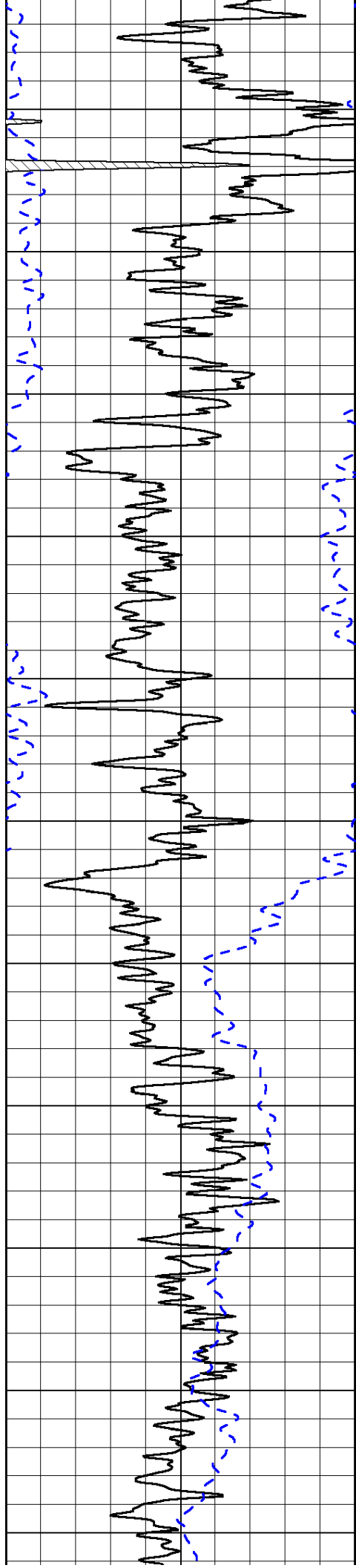
-95

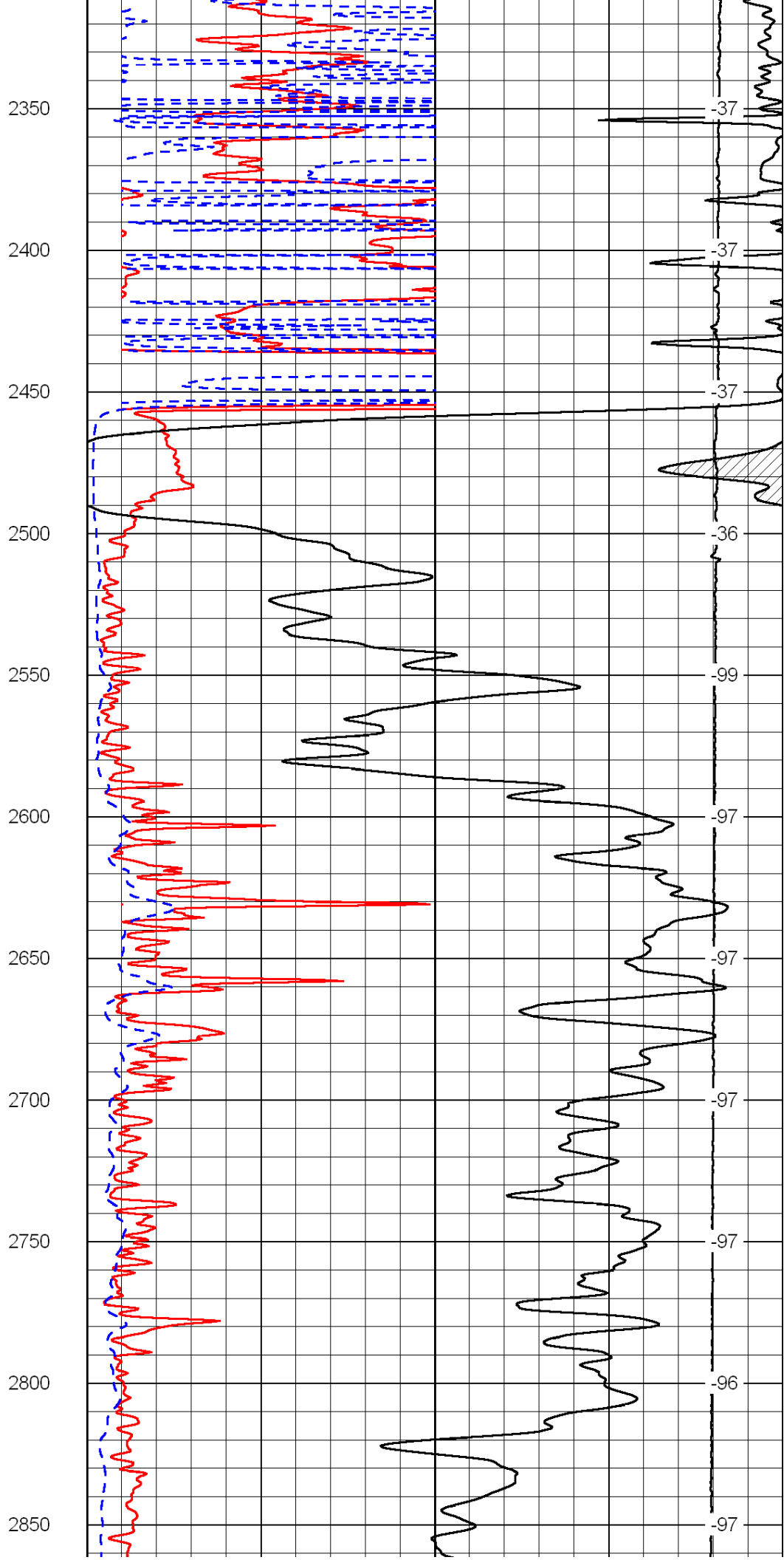
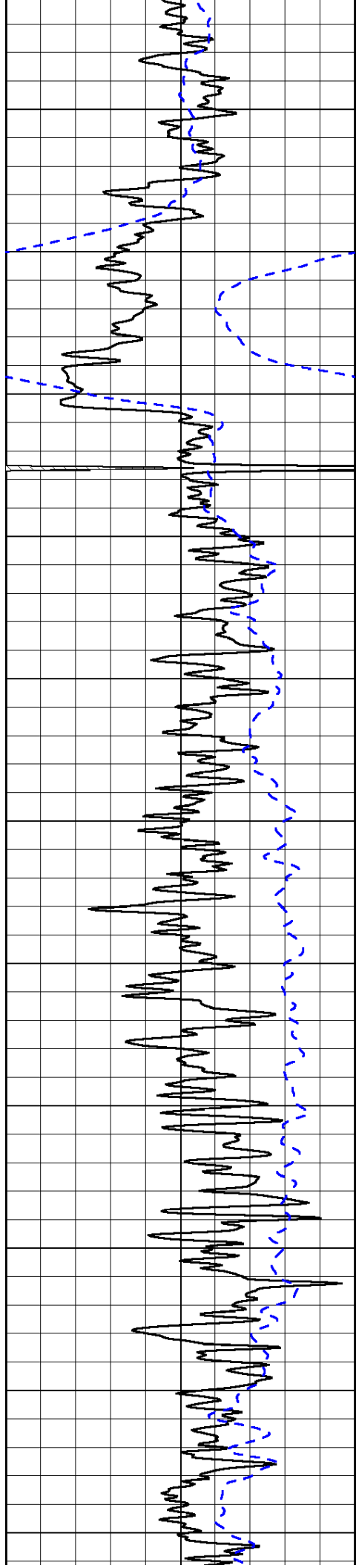
-95

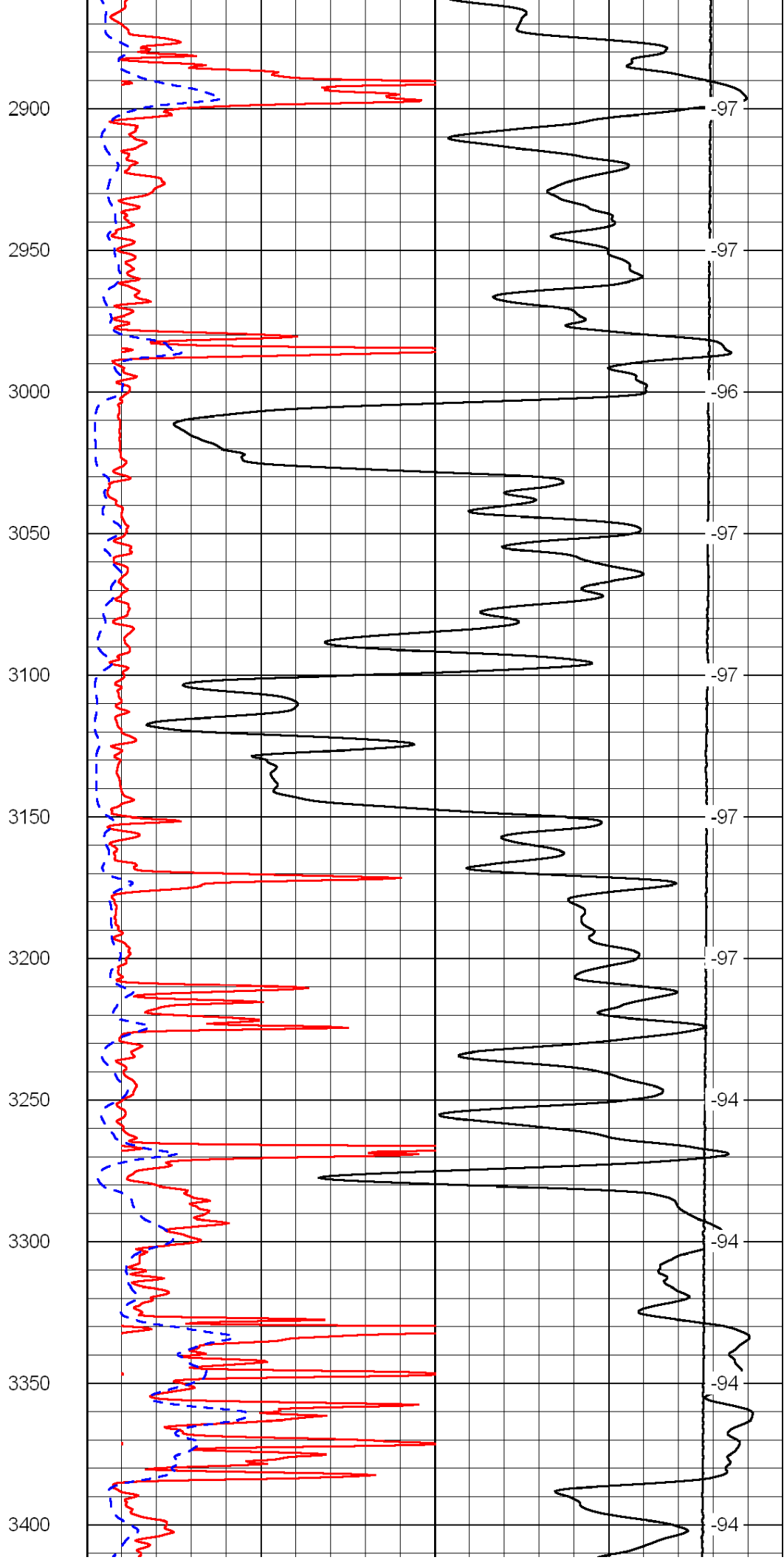
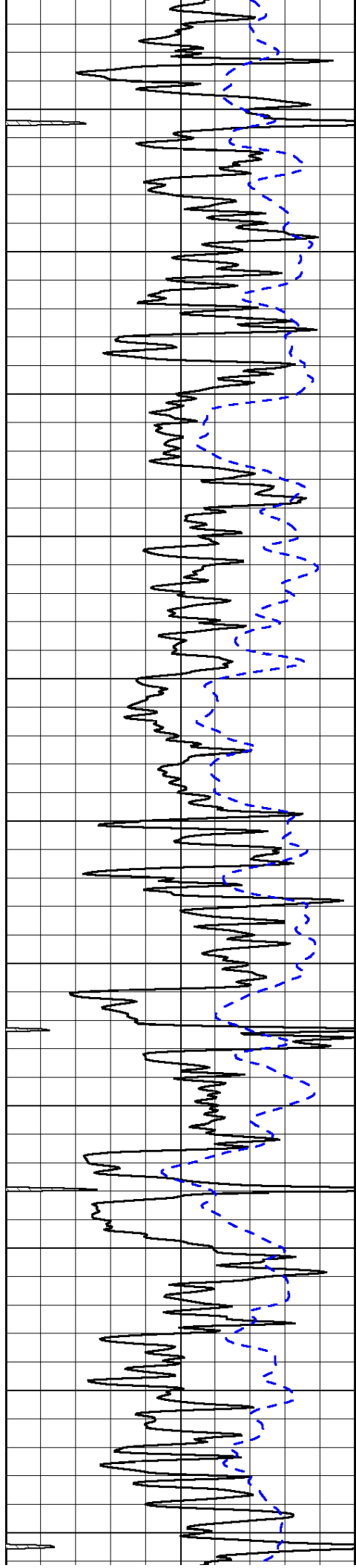
-95

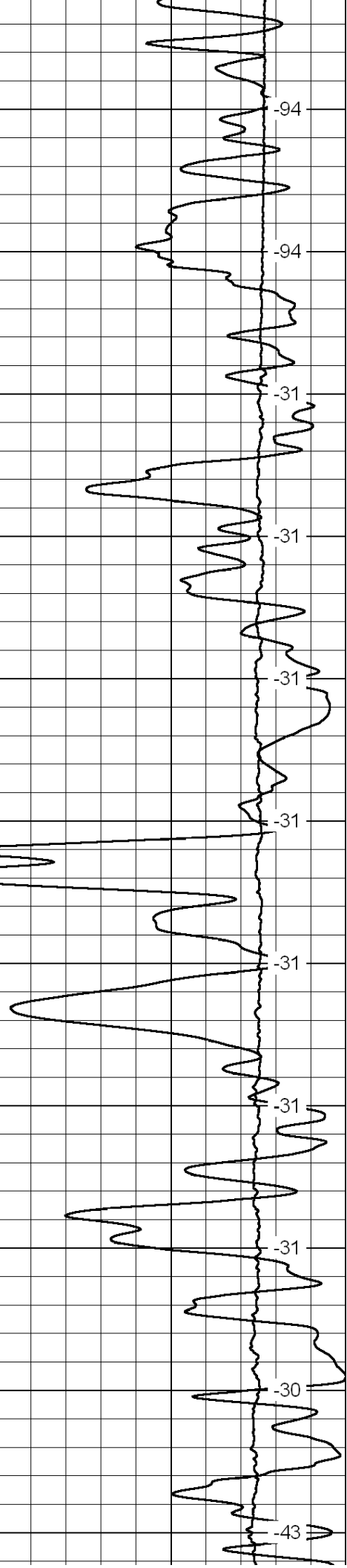
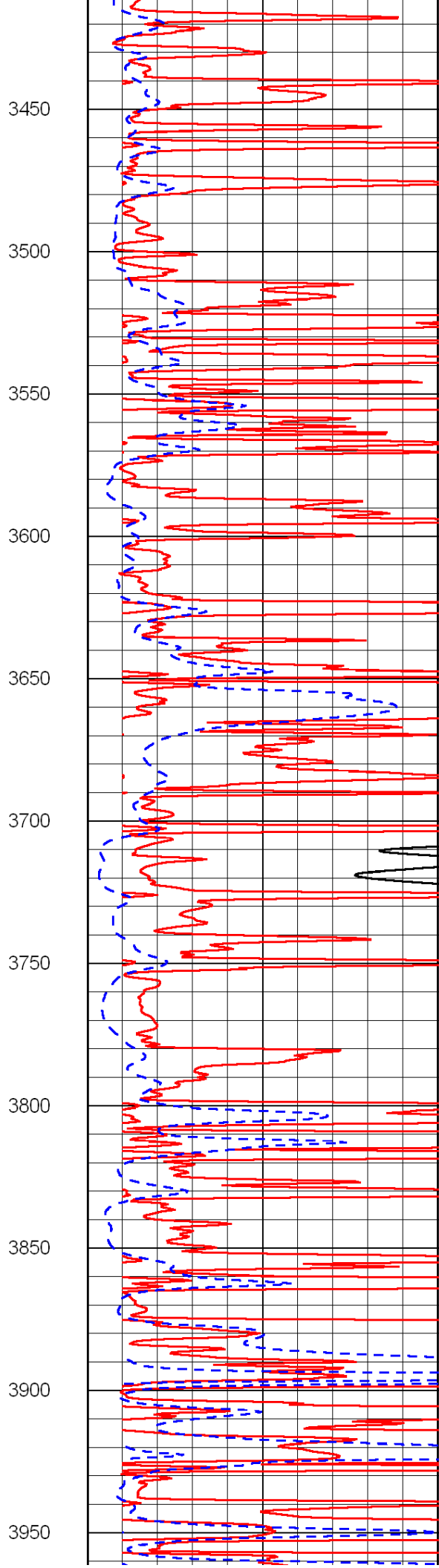
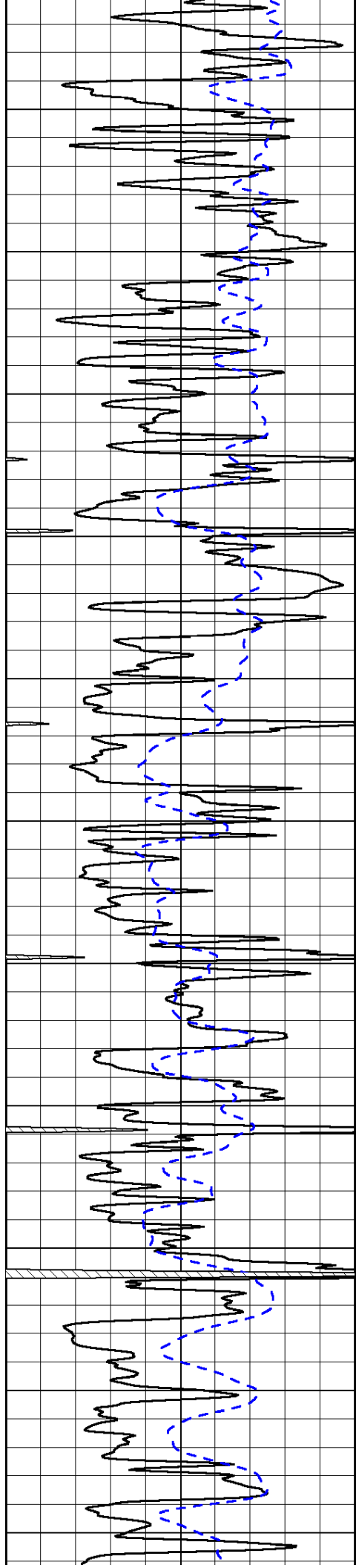
-95

-95











0	Gamma Ray	150
-200	SP (mV)	0

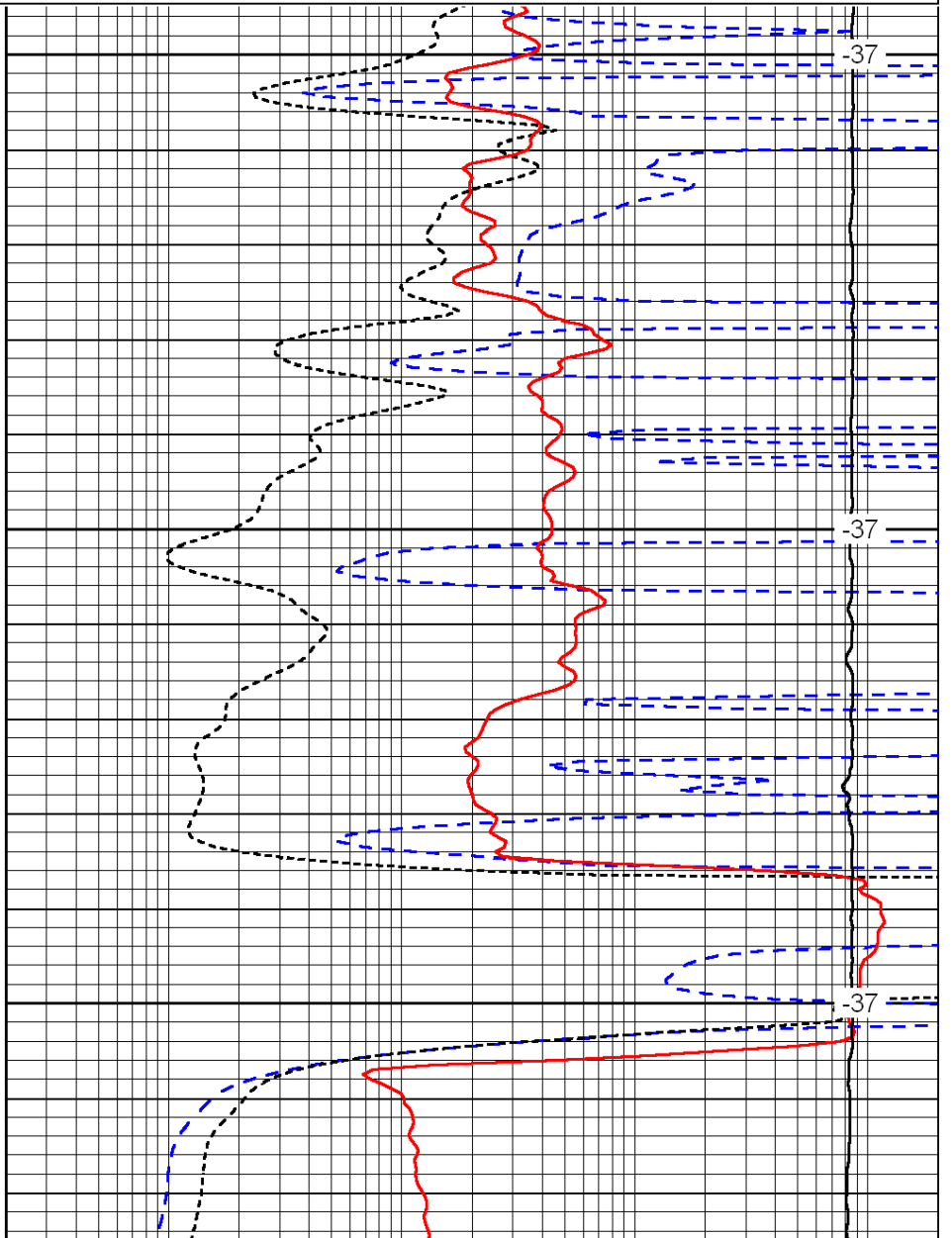
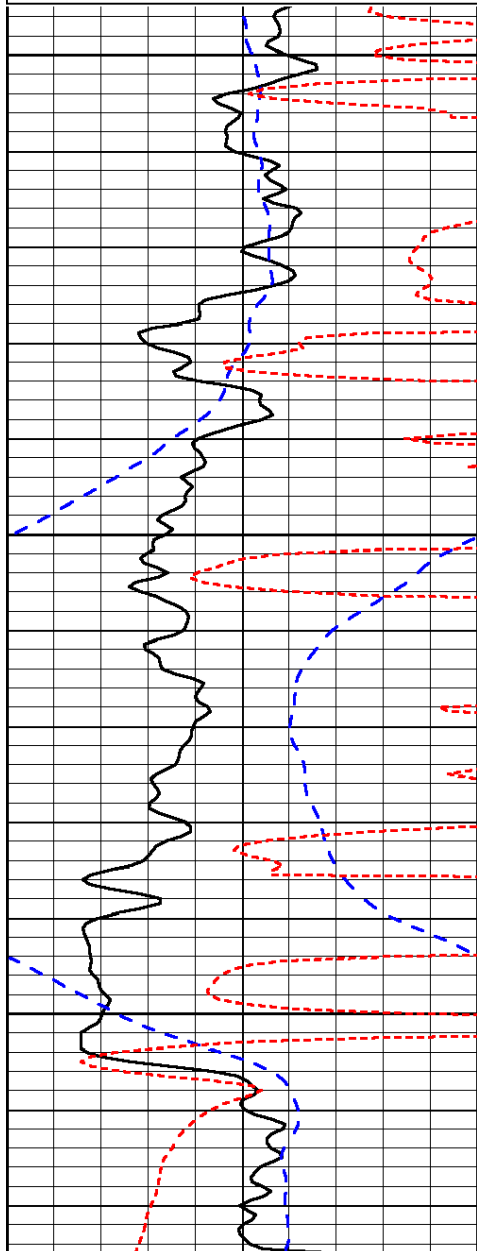
0	Shallow Resistivity	50
0	Deep Resistivity	50
1000	Conductivity	0
15000	Line Tension	0
50	Shallow Resistivity	500
50	Deep Resistivity	500

LSPD
0
0
0
LSPD

Database File: c:\warrior\data\russell\_lee 'c' no. 1-5\russellhd.db  
 Dataset Pathname: DIL/russtk  
 Presentation Format: dil  
 Dataset Creation: Tue Jun 22 22:04:54 2010  
 Charted by: Depth in Feet scaled 1:240

0	Gamma Ray	150
-200	SP (mV)	0
-160	Rxo / Rt	40

0.2	Deep Resistivity	2000
0.2	Medium Resistivity	2000
0.2	Shallow Resistivity	2000
15000	Line Tension	0



0	Gamma Ray	150
-200	SP (mV)	0

0.2	Deep Resistivity	2000
0.2	Medium Resistivity	2000

-160 Rxo / Rt 40

0.2 Shallow Resistivity 2000

15000 Line Tension 0

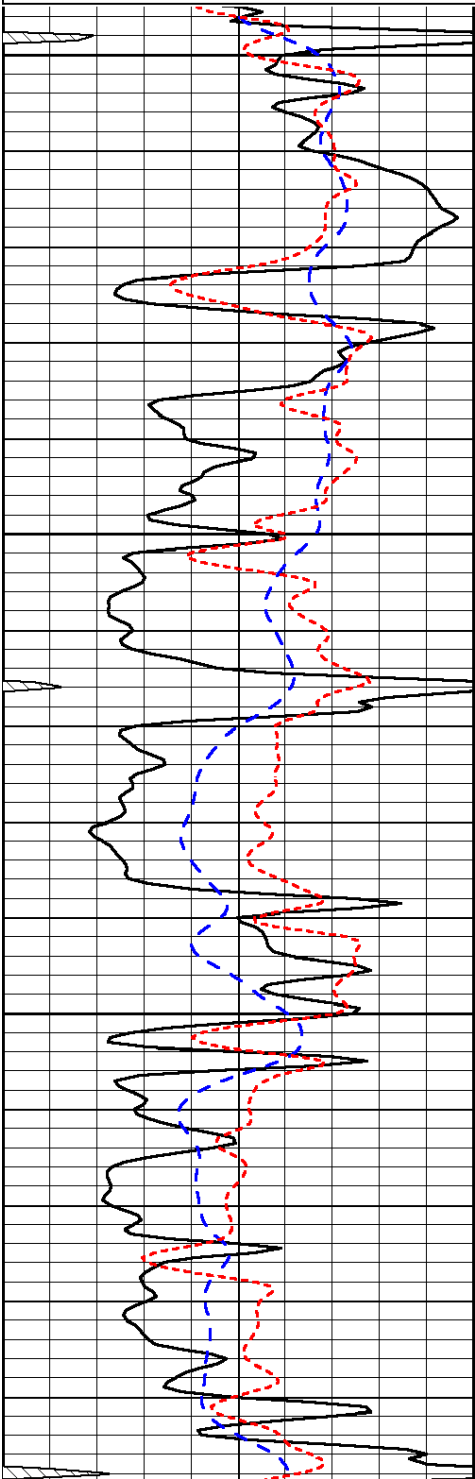
LSPD

Database File: c:\warrior\data\russell\_lee 'c' no. 1-5\russellhd.db  
Dataset Pathname: DIL/russtk  
Presentation Format: dil  
Dataset Creation: Tue Jun 22 22:04:54 2010  
Charted by: Depth in Feet scaled 1:240

0 Gamma Ray 150  
-200 SP (mV) 0  
-160 Rxo / Rt 40

0.2 Deep Resistivity 2000  
0.2 Medium Resistivity 2000  
0.2 Shallow Resistivity 2000  
15000 Line Tension 0

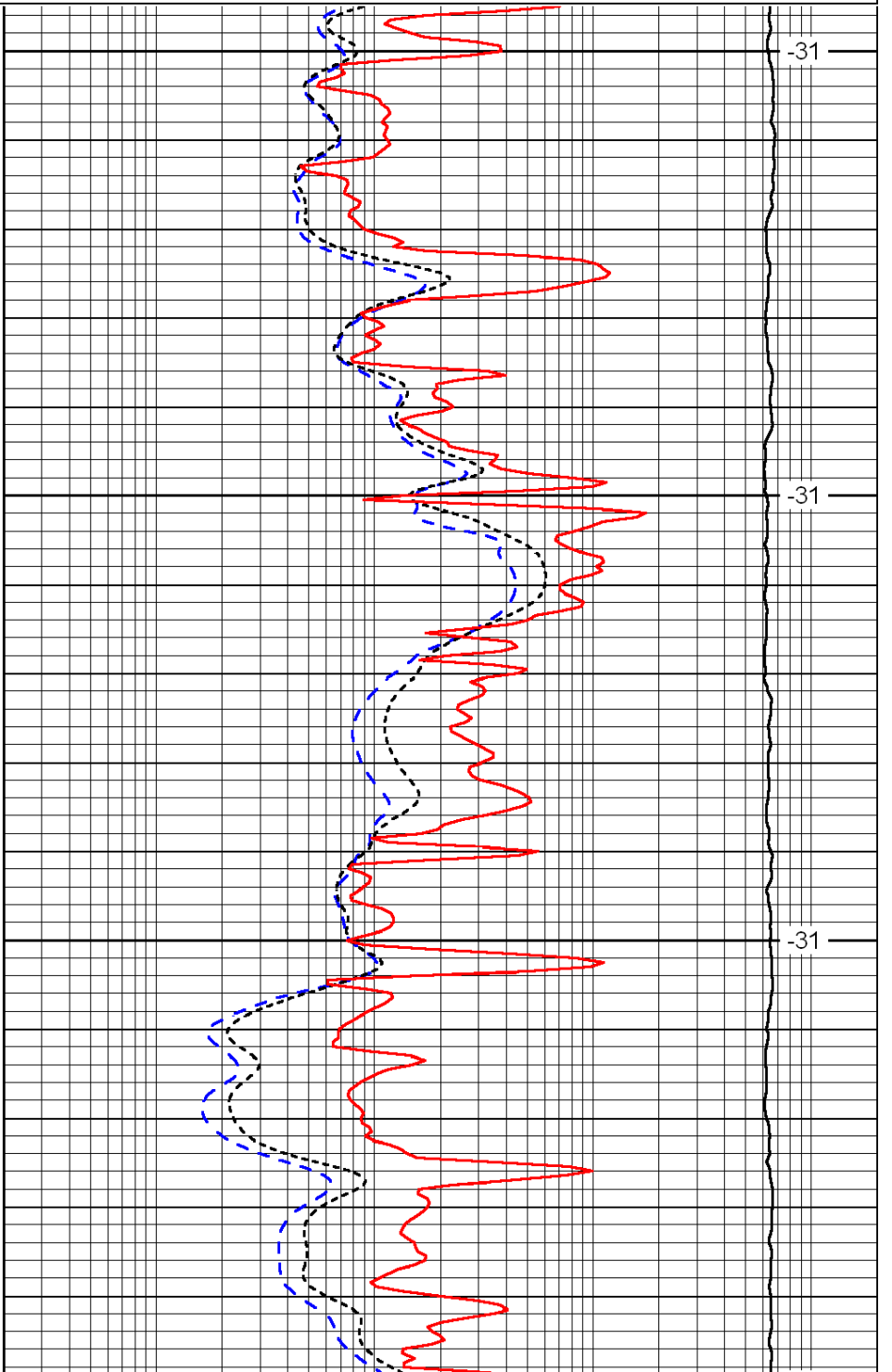
LSPD



3600

3650

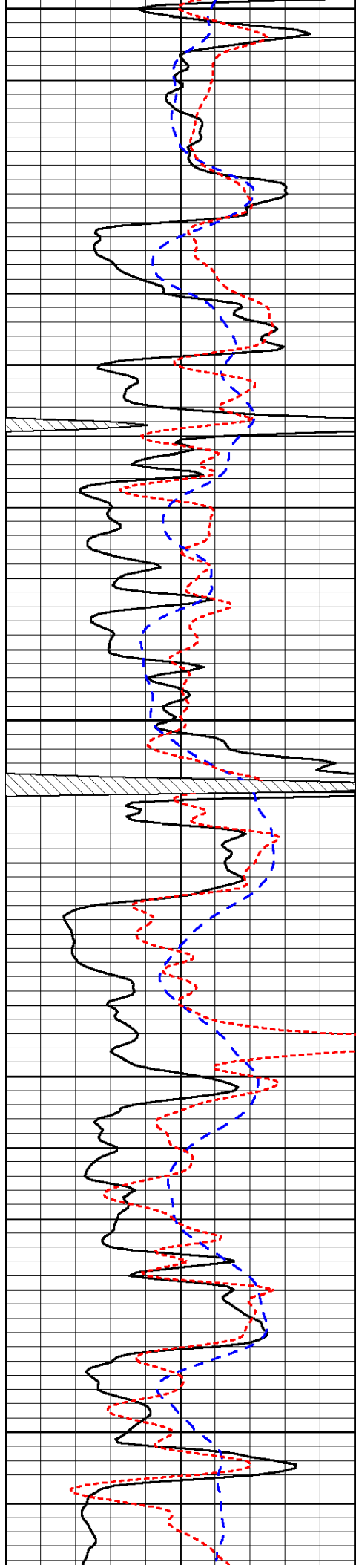
3700



-31

-31

-31



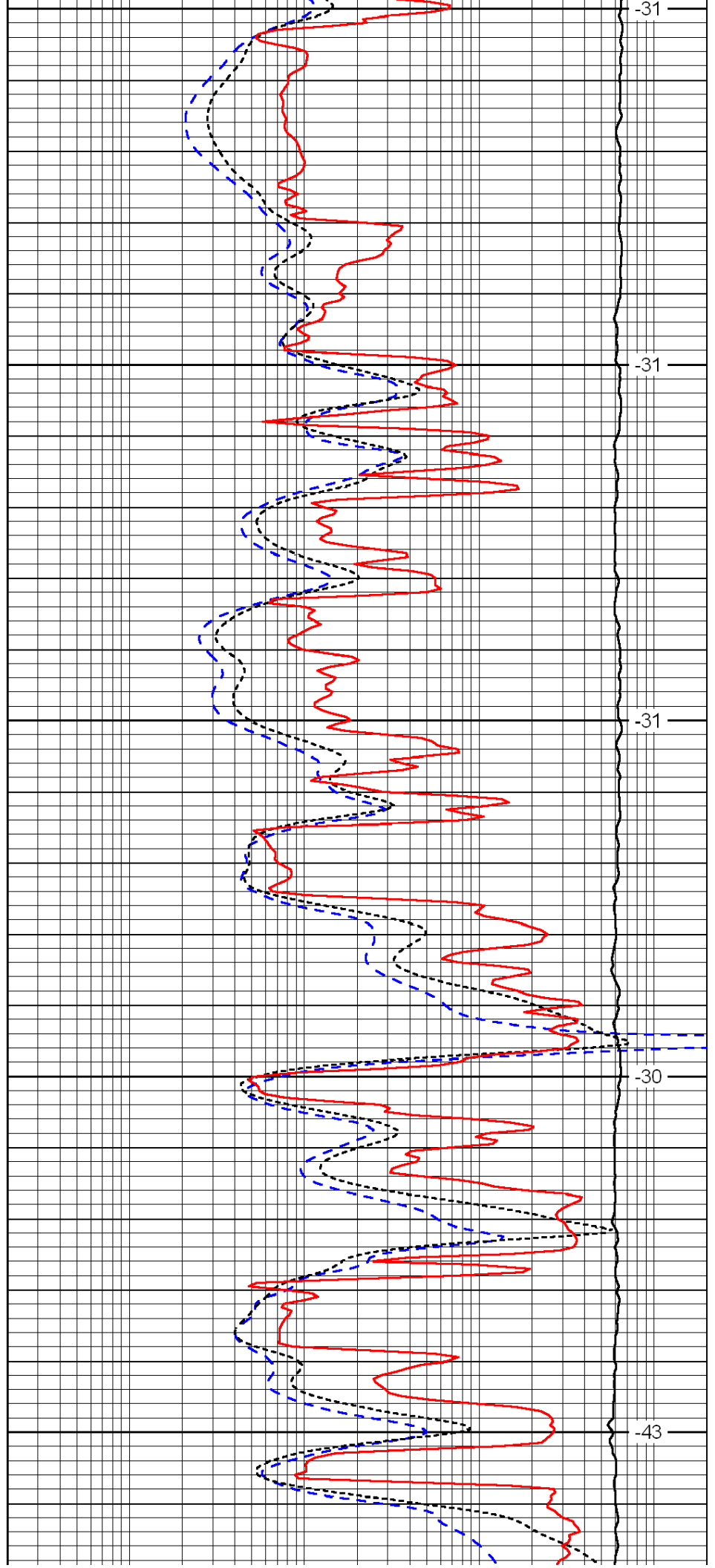
3750

3800

3850

3900

3950



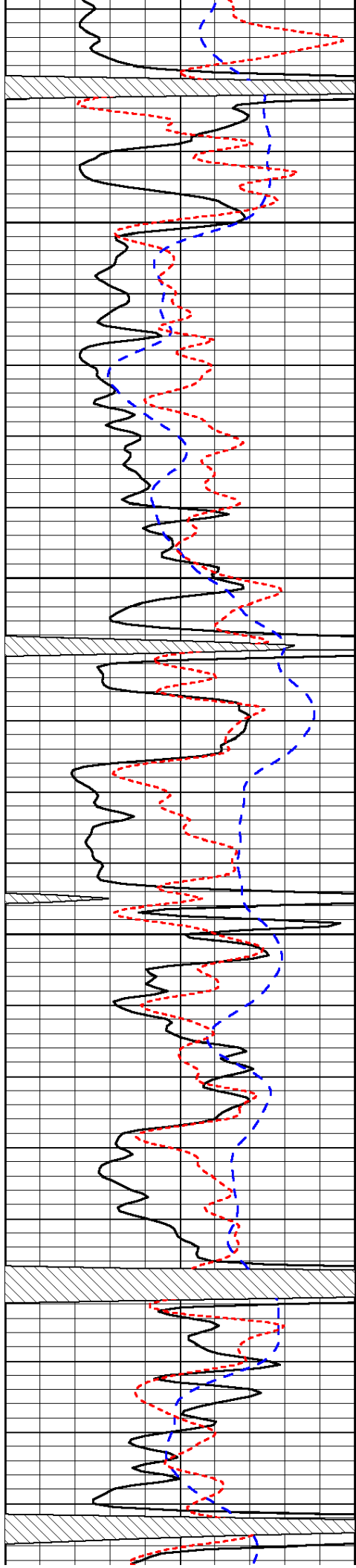
-31

-31

-31

-30

-43

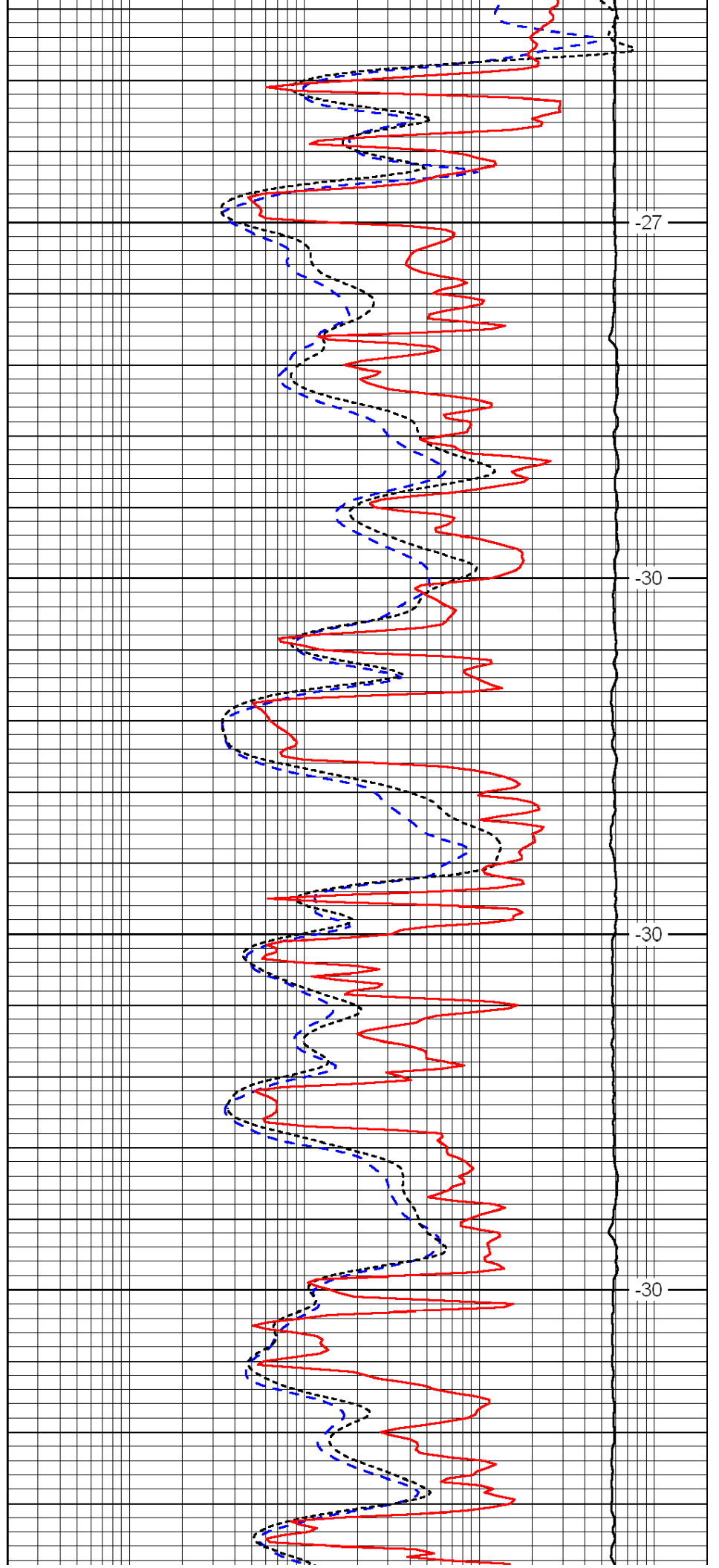


4000

4050

4100

4150

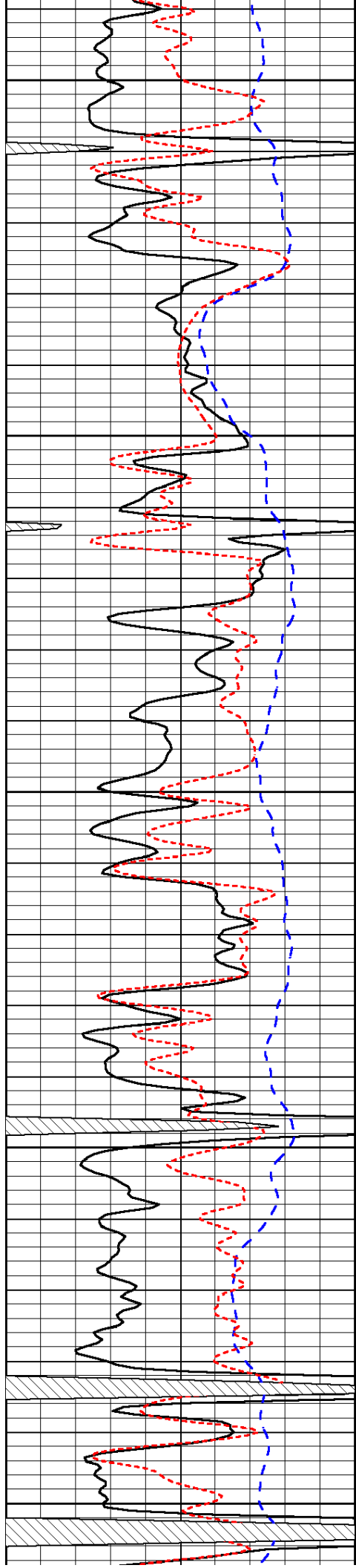


-27

-30

-30

-30



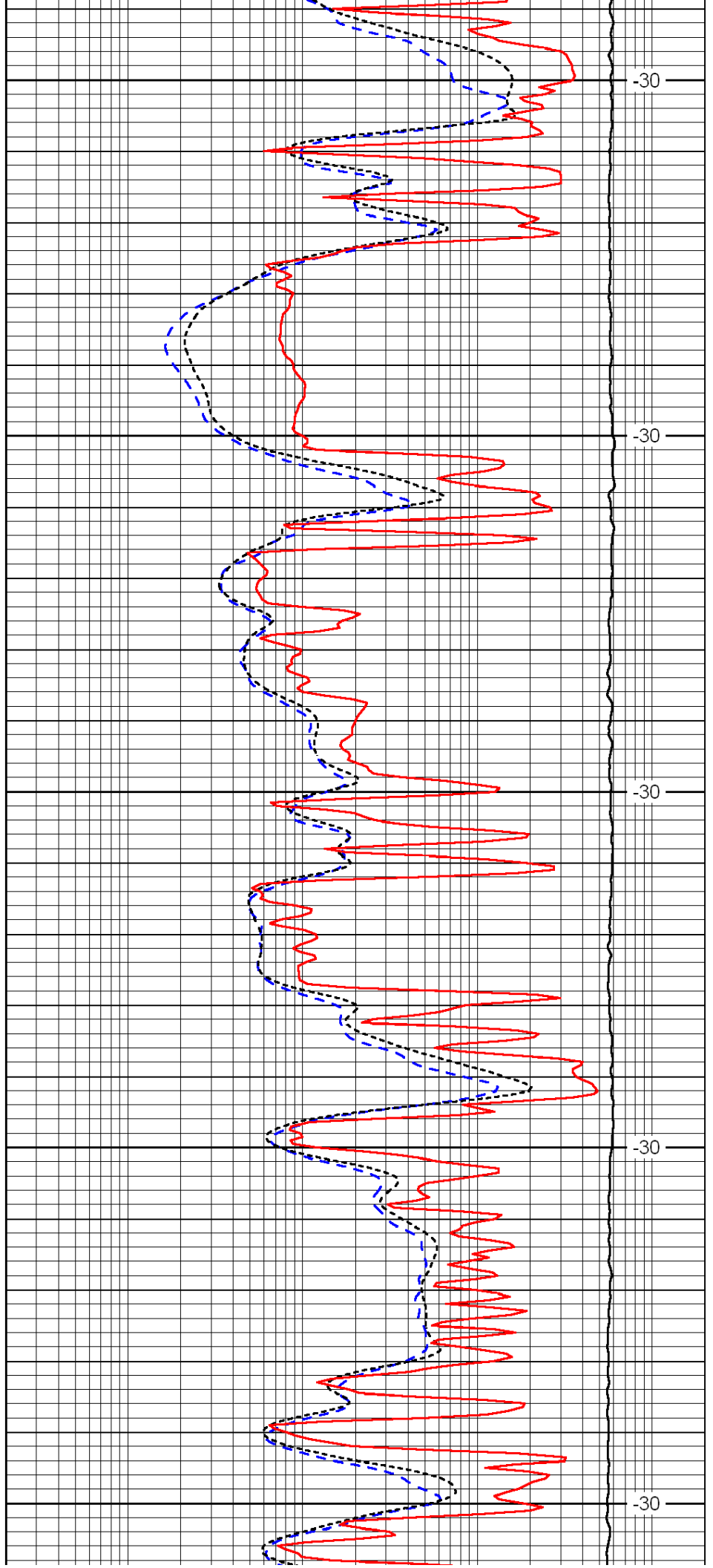
4200

4250

4300

4350

4400



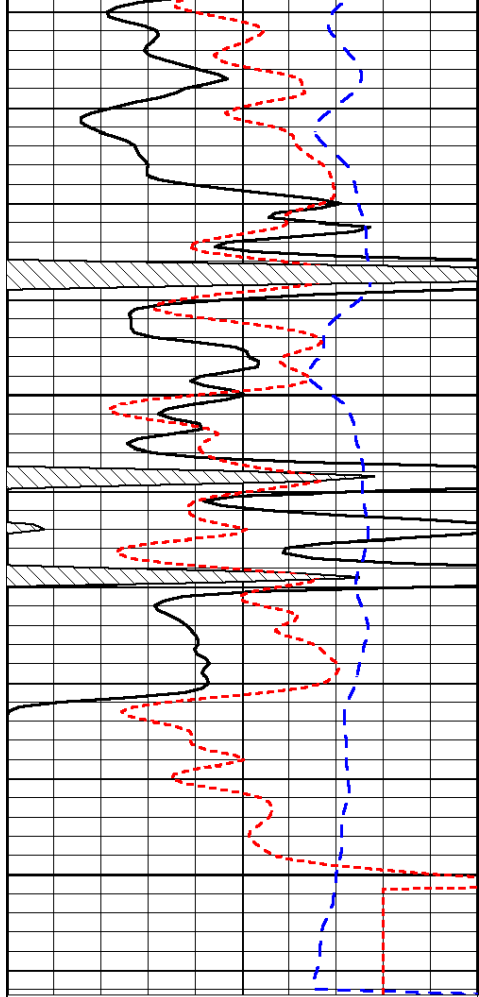
-30

-30

-30

-30

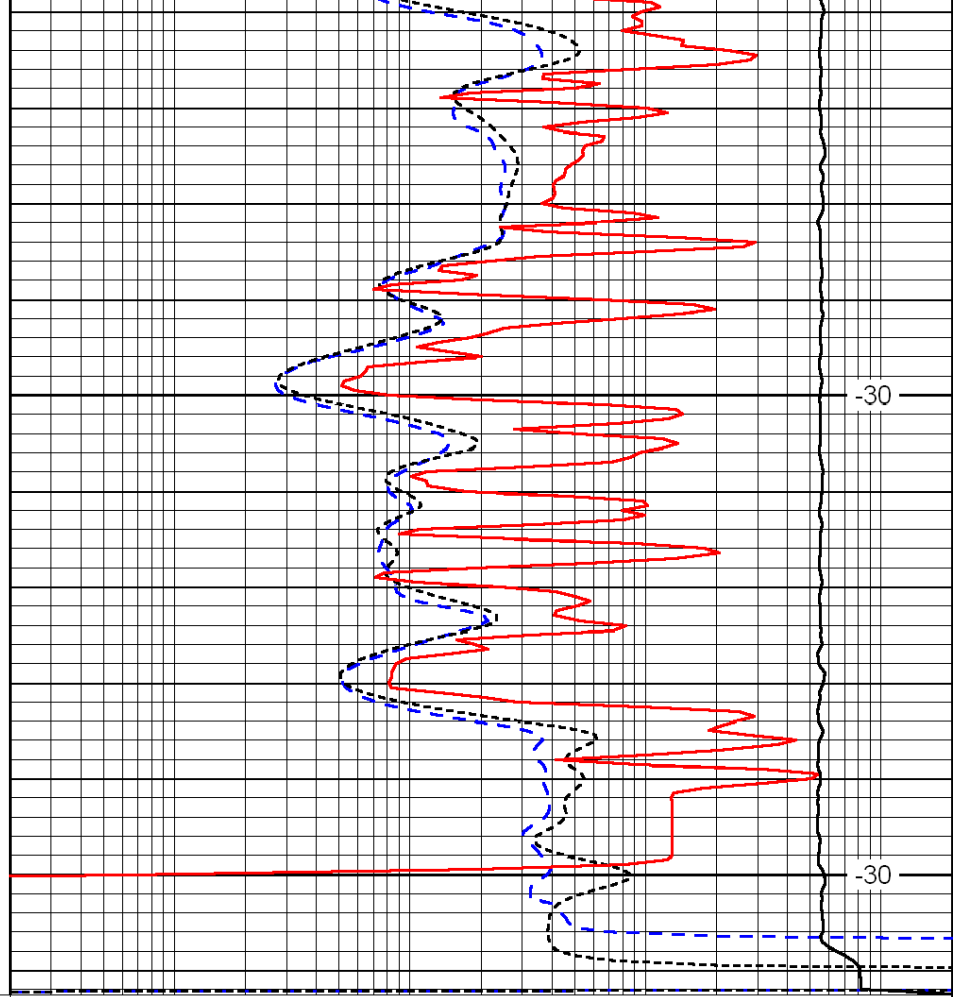
-30



0	Gamma Ray	150
-200	SP (mV)	0
-160	Rxo / Rt	40

4450

4500



0.2	Deep Resistivity	2000
0.2	Medium Resistivity	2000
0.2	Shallow Resistivity	2000
15000	Line Tension	0

-30

-30

LSPD