



Microresistivity Log

DIGITAL LOG (785) 625-3858

API No. 15-109-20919-00-00	Company Russell Oil, Inc	Well Lee 'C' No. 1-5	Field Wildcat
	County Logan	State Kansas	
	Location S/2 - NE - NW - SE 2240' FSL & 1650' FEL		Other Services CNL/CDL DIL
	Sec: 5	Twp: 13 S	Rge: 33 W
Permanent Datum Log Measured From Drilling Measured From	Ground Level Kelly Bushing Kelly Bushing	Elevation 2966 11 Ft. Above Perm. Datum	K.B. 2977 D.F. G.L. 2966

Date	6/22/2010
Run Number	Two
Depth Driller	4508
Depth Logger	4507
Bottom Logged Interval	4506
Top Log Interval	3600
Casing Driller	8.625 @ 270
Casing Logger	260
Bit Size	7.875
Type Fluid in Hole	Chemical
Salinity, ppm CL	4500
Density / Viscosity	9.4 54
pH / Fluid Loss	10.0 8.0
Source of Sample	Flowline
Rm @ Meas. Temp	1.20 @ 72
Rmf @ Meas. Temp	0.90 @ 72
Rmc @ Meas. Temp	1.62 @ 72
Source of Rmf / Rmc	Charts
Rm @ BHT	0.71 @ 121
Operating Rig Time	4 Hours
Max Rec. Temp. F	121
Equipment Number	15
Location	Hays
Recorded By	B. Becker
Witnessed By	Kevin Bailey

<<< Fold Here >>>

All interpretations are opinions based on inferences from electrical or other measurements and we cannot and do not guarantee the accuracy or correctness of any interpretation, and we shall not, except in the case of gross or willful negligence on our part, be liable or responsible for any loss, costs, damages, or expenses incurred or sustained by anyone resulting from any interpretation made by any of our officers, agents or employees. These interpretations are also subject to our general terms and conditions set out in our current Price Schedule.

Comments

Thank you for using Log-Tech, Inc.
 (785) 625-3858

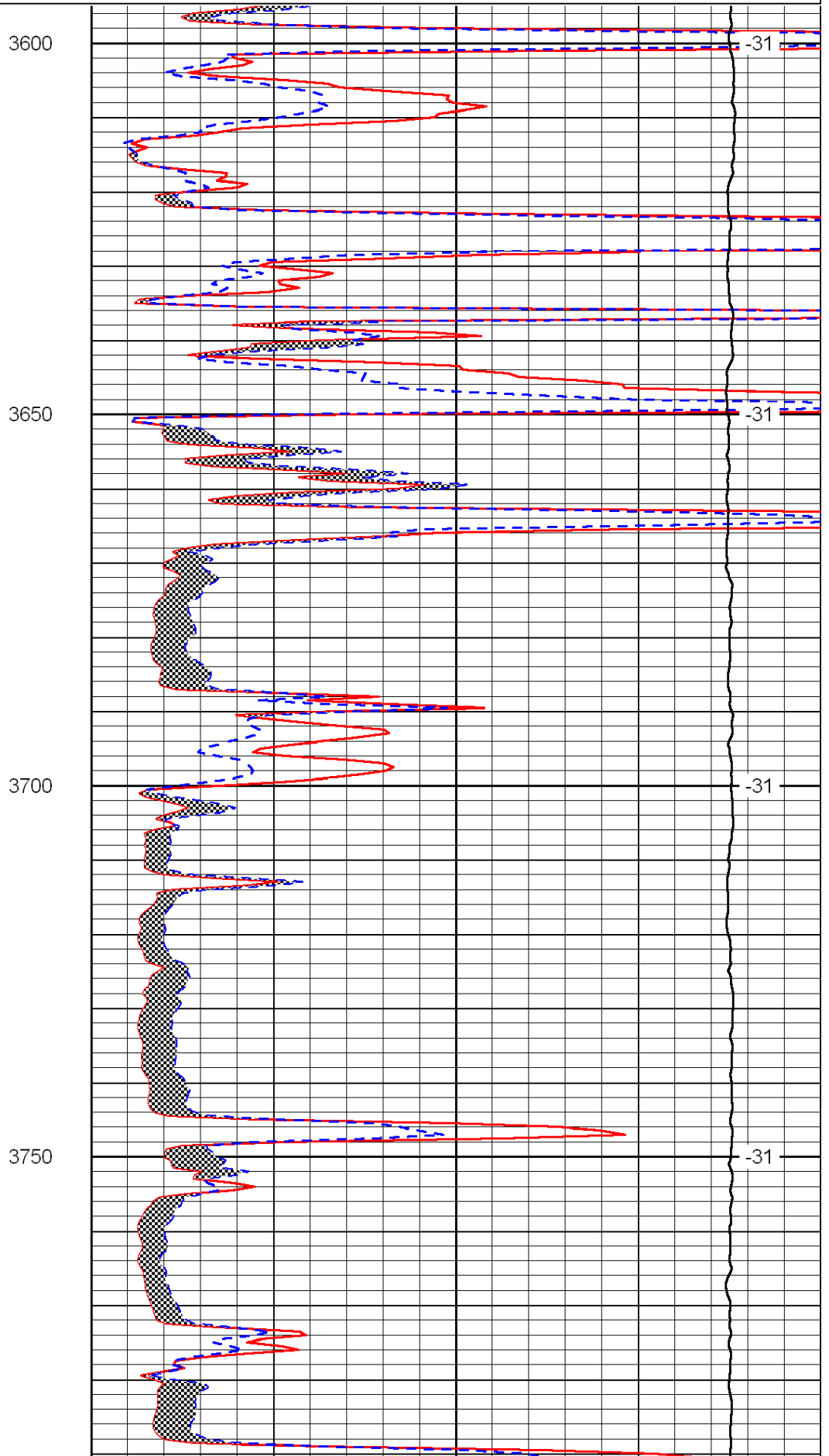
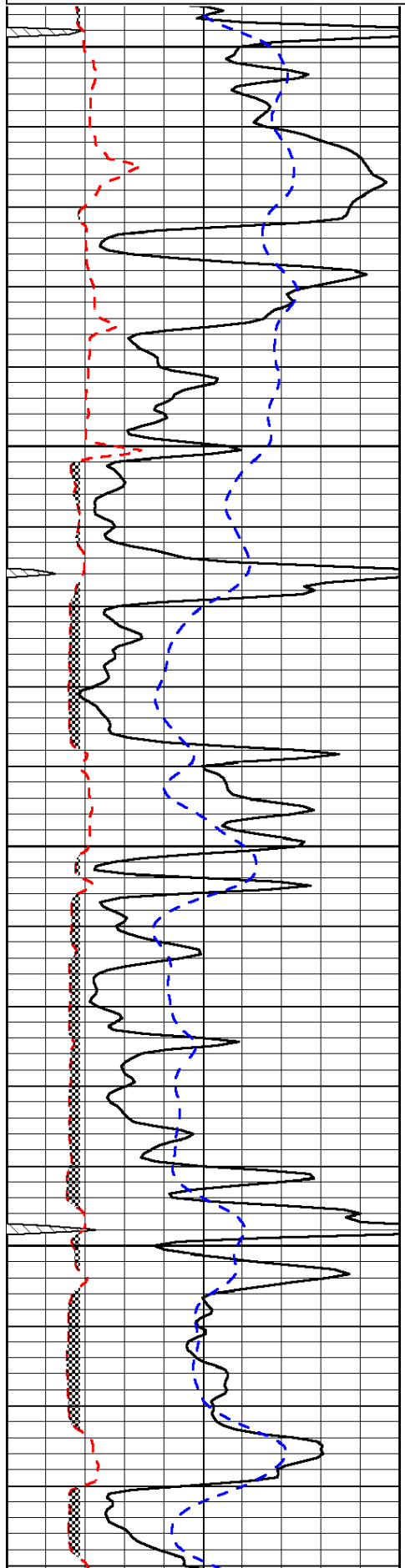
 Monument, Ks;
 South to Seneca Rd;
 3/4 East; North to location

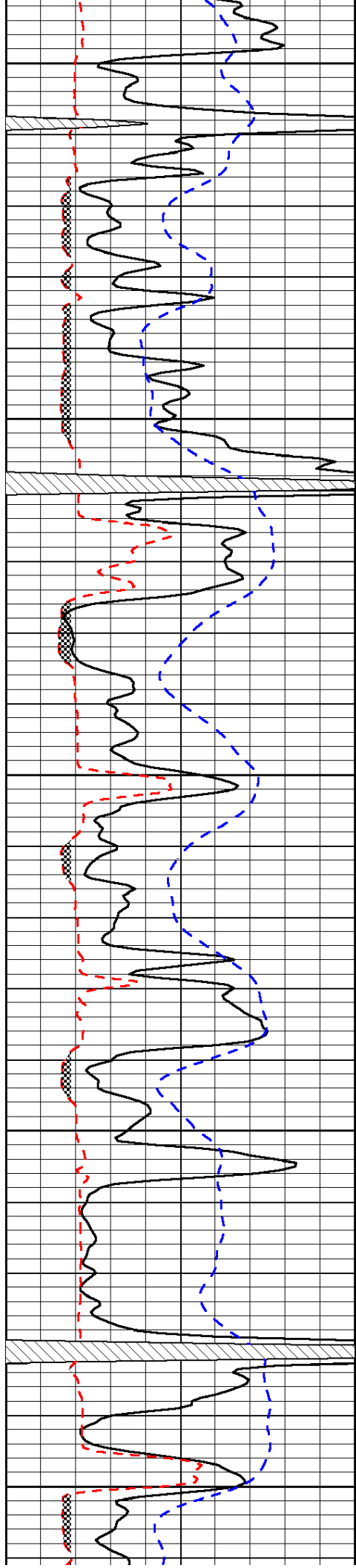
Database File: c:\warrior\data\russell_lee 'c' no. 1-5\russellhd.db
 Dataset Pathname: DIL/russtk
 Presentation Format: micro
 Dataset Creation: Tue Jun 22 22:04:54 2010
 Charted by: Depth in Feet scaled 1:240

0	Gamma Ray	150
6	Micro Log Caliper (GAPI)	16
-200	SP (mV)	0

0	Micro Inverse 1 X 1	40
0	Micro Normal 2"	40
15000	Line Weight	0

LSPD





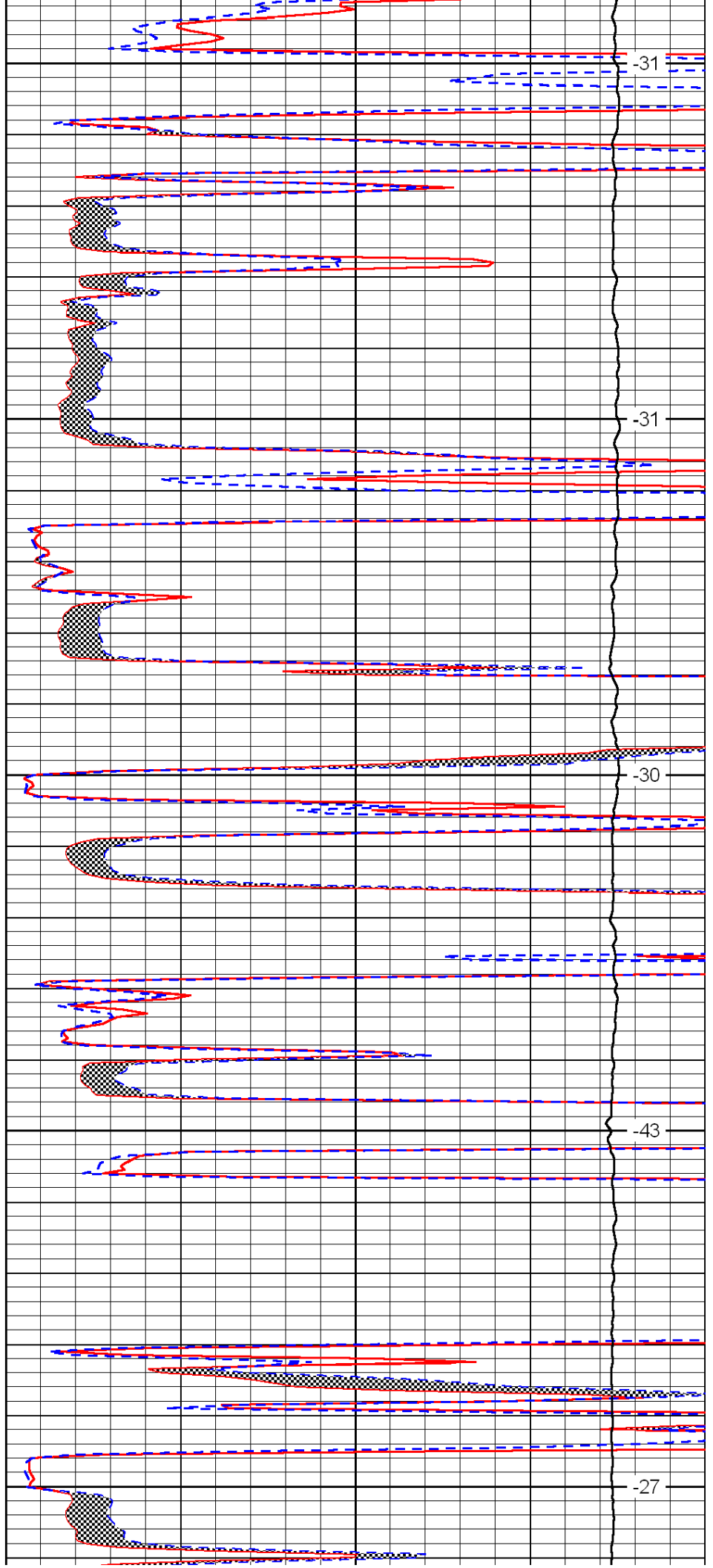
3800

3850

3900

3950

4000



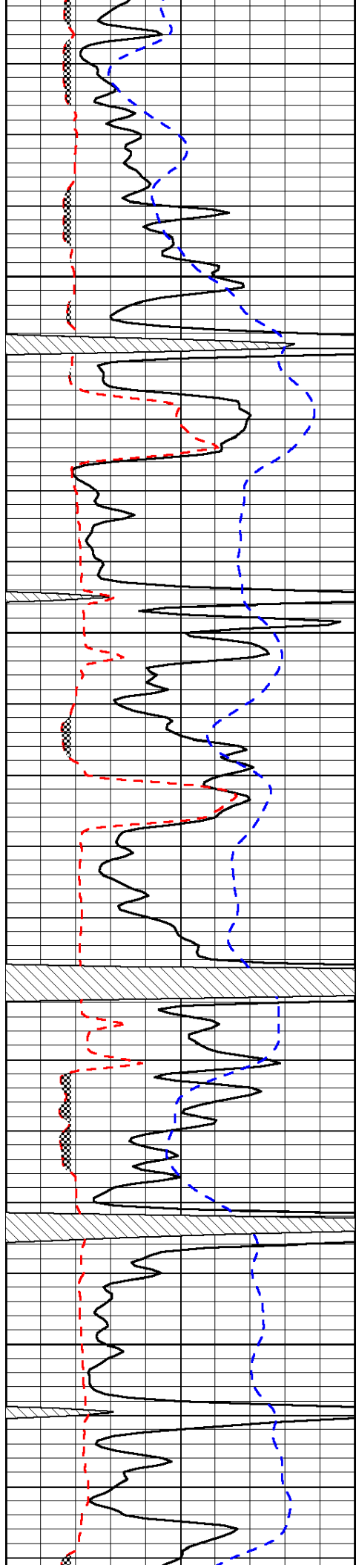
-31

-31

-30

-43

-27

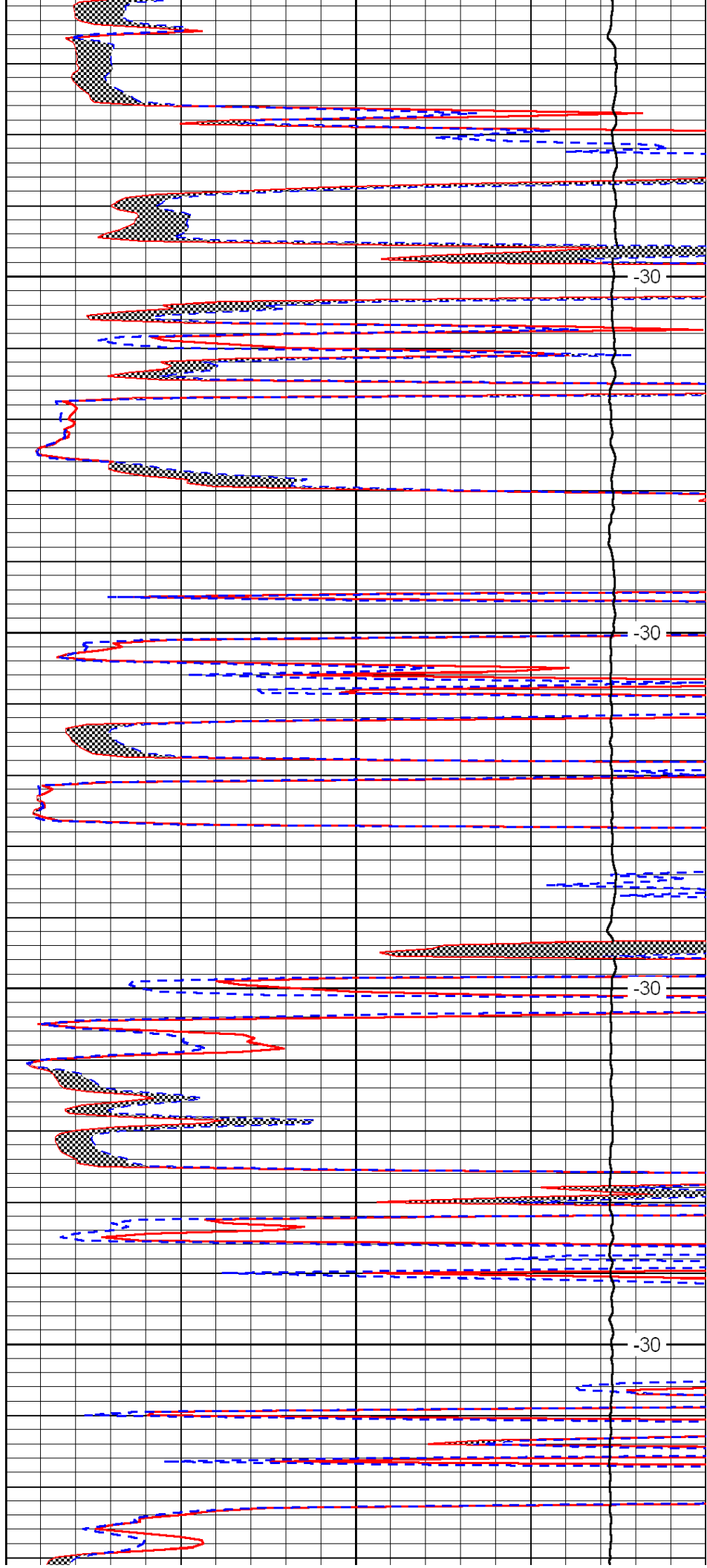


4050

4100

4150

4200

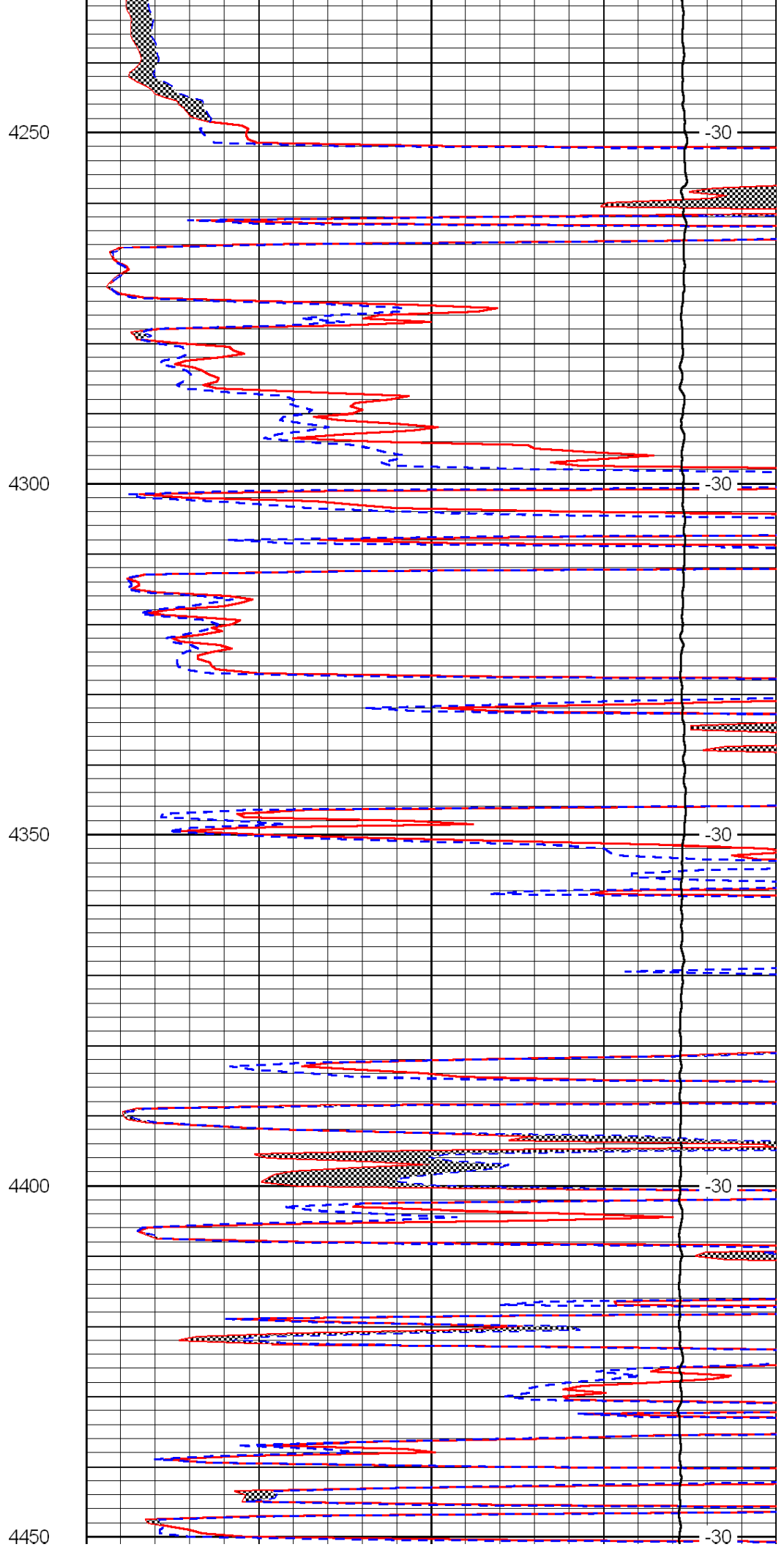
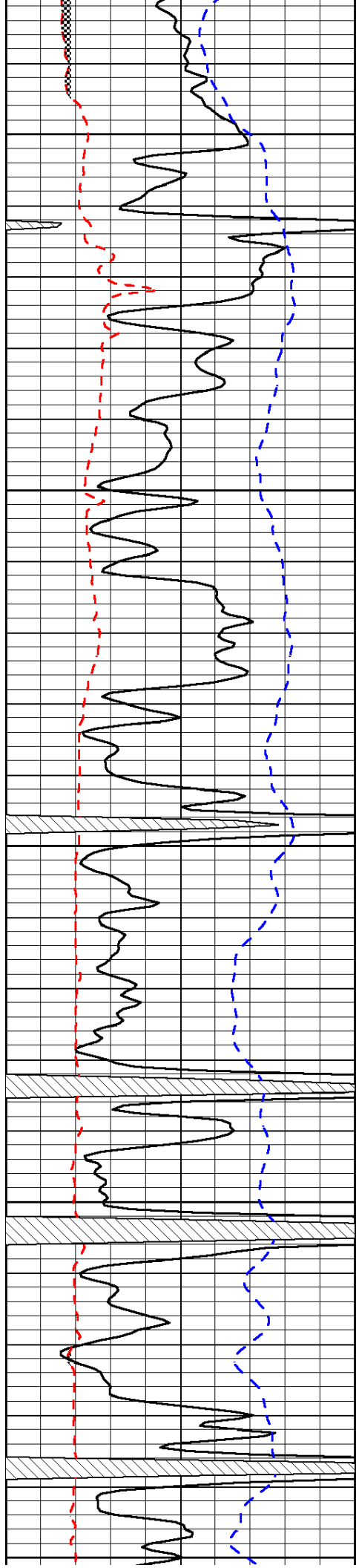


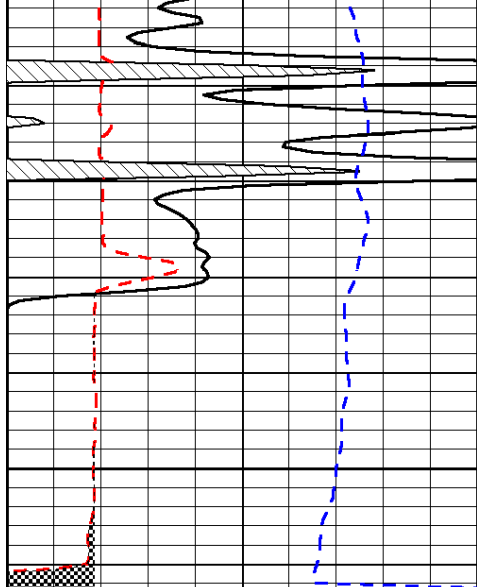
-30

-30

-30

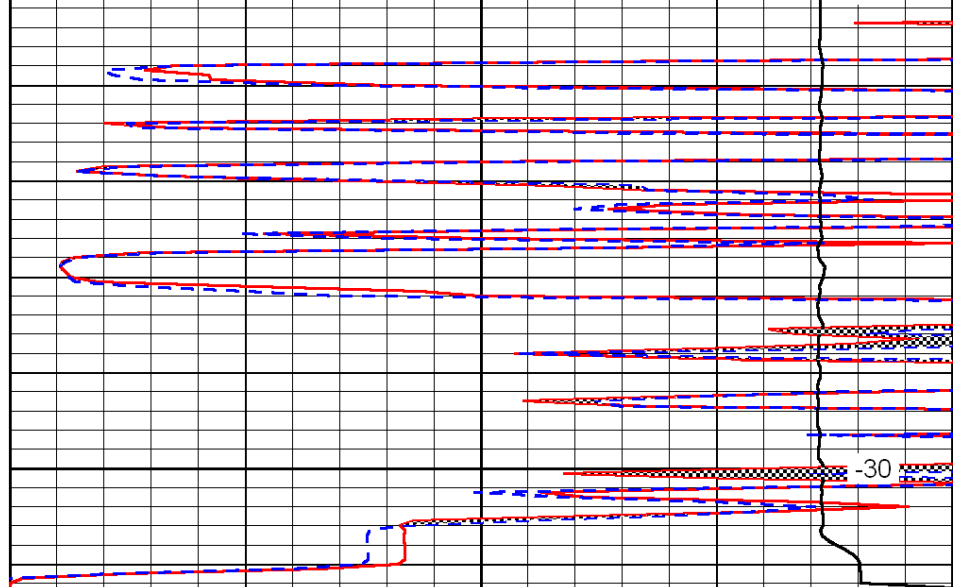
-30





0	Gamma Ray	150
6	Micro Log Caliper (GAPI)	16
-200	SP (mV)	0

4500



0	Micro Inverse 1 X 1	40
0	Micro Normal 2''	40
15000	Line Weight	0

LSPD