



DIGITAL LOG (785) 625-3858

Dual Induction Log

API No.	15-115-21,415-00-00	
Company	Arbuckle Energy, Inc.	
Well	Stuchlik No. 2	
Field	Lost Springs	
County	Marion	State Kansas
Location	550' FNL & 2,970' FEL	
Sec:	32	Twp: 17S Rge: 4E
Other Services	CNL/CDL	

Permanent Datum	Ground Level	Elevation 1469	K.B. 1478
Log Measured From	Kelly Bushing	9 Ft. Above Perm. Datum	D.F. 1469
Drilling Measured From	Kelly Bushing		G.L. 1469
Date	6/14/2010		
Run Number	One		
Depth Driller	2754		
Depth Logger	2753		
Bottom Logged Interval	2752		
Top Log Interval	200		
Casing Driller	8.625 @ 210		
Casing Logger	219		
Bit Size	7.875		
Type Fluid in Hole	Chemical		
Salinity, ppm CL	900		
Density / Viscosity	9.5	38	
pH / Fluid Loss	8.5	10.4	
Source of Sample	Flowline		
Rm @ Meas. Temp	.72	@ 78	
Rmf @ Meas. Temp	.54	@ 78	
Rmc @ Meas. Temp	.97	@ 78	
Source of Rmf / Rmc	Charts		
Rm @ BHT	.53	@ 106	
Operating Rig Time	2 1/2 Hours		
Max Rec. Temp. F	106		
Equipment Number	10		
Location	Hays		
Recorded By	J. Long		
Witnessed By	Gary Reed		

<<< Fold Here >>>

All interpretations are opinions based on inferences from electrical or other measurements and we cannot and do not guarantee the accuracy or correctness of any interpretation, and we shall not, except in the case of gross or willful negligence on our part, be liable or responsible for any loss, costs, damages, or expenses incurred or sustained by anyone resulting from any interpretation made by any of our officers, agents or employees. These interpretations are also subject to our general terms and conditions set out in our current Price Schedule.

Comments

Thank you for using Log-Tech, Inc.  
(785) 625-3858

Lincolnvile, 3 1/2 West to Sunflower Rd, 3 North, 1/2 East, South Into

Database File: c:\warrior\data\arbuckle energy\_stuchlik no. 2\arbucklehd.db  
 Dataset Pathname: dil/arbckstck  
 Presentation Format: dil2in  
 Dataset Creation: Tue Jun 15 00:14:21 2010  
 Charted by: Depth in Feet scaled 1:600

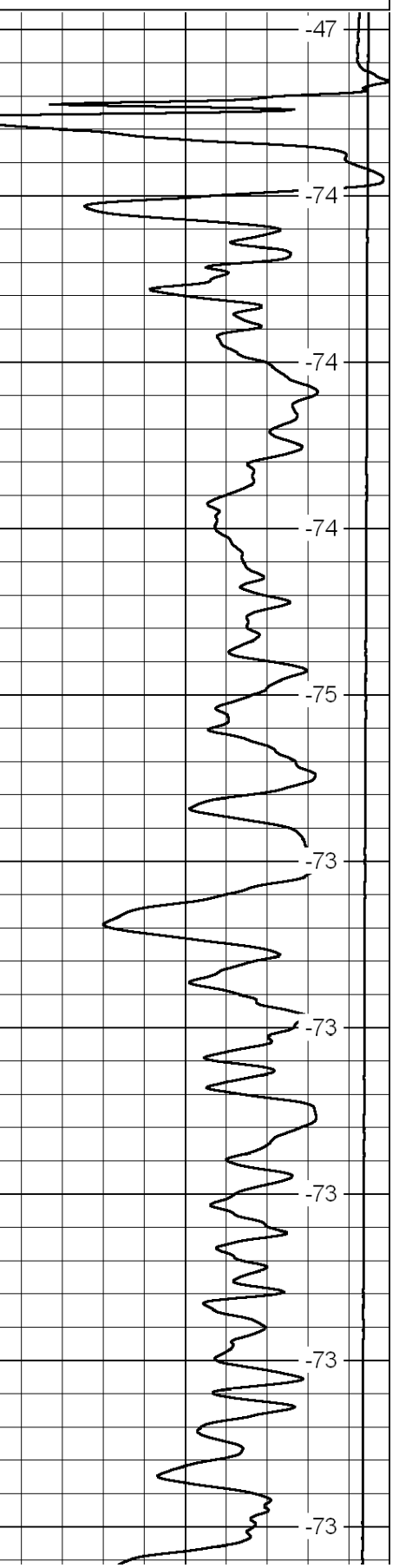
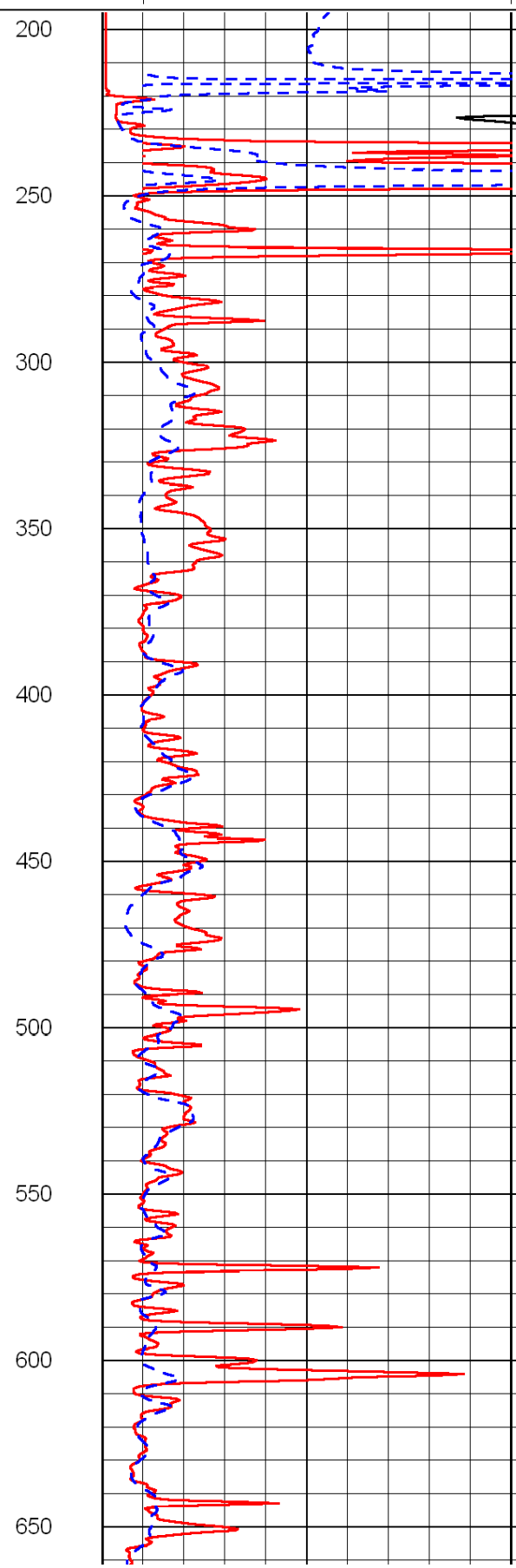
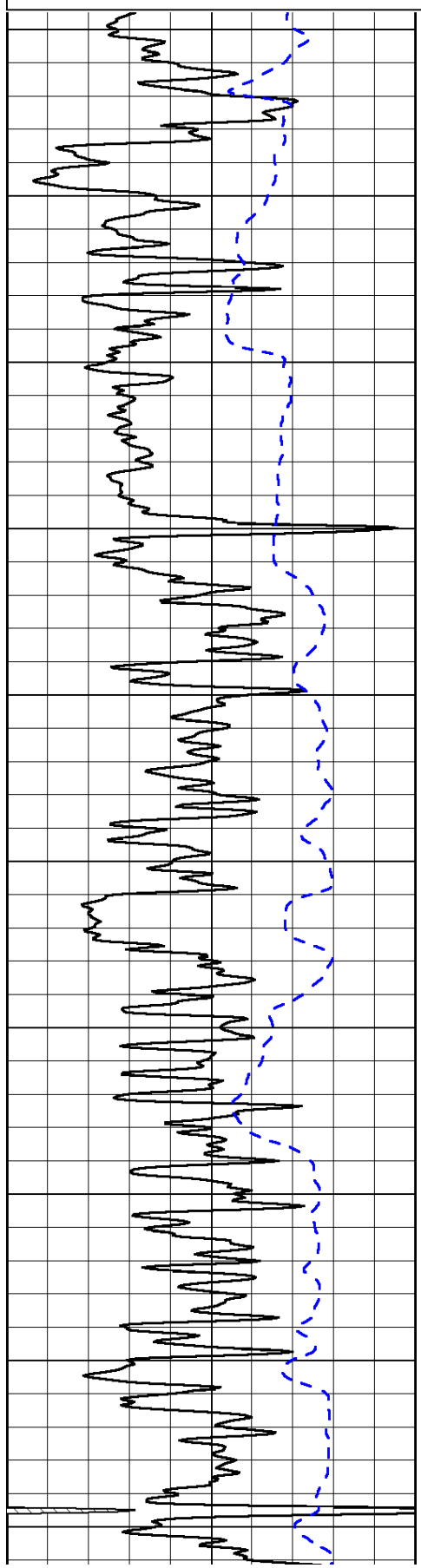
0	Gamma Ray	150
-200	SP (mV)	0

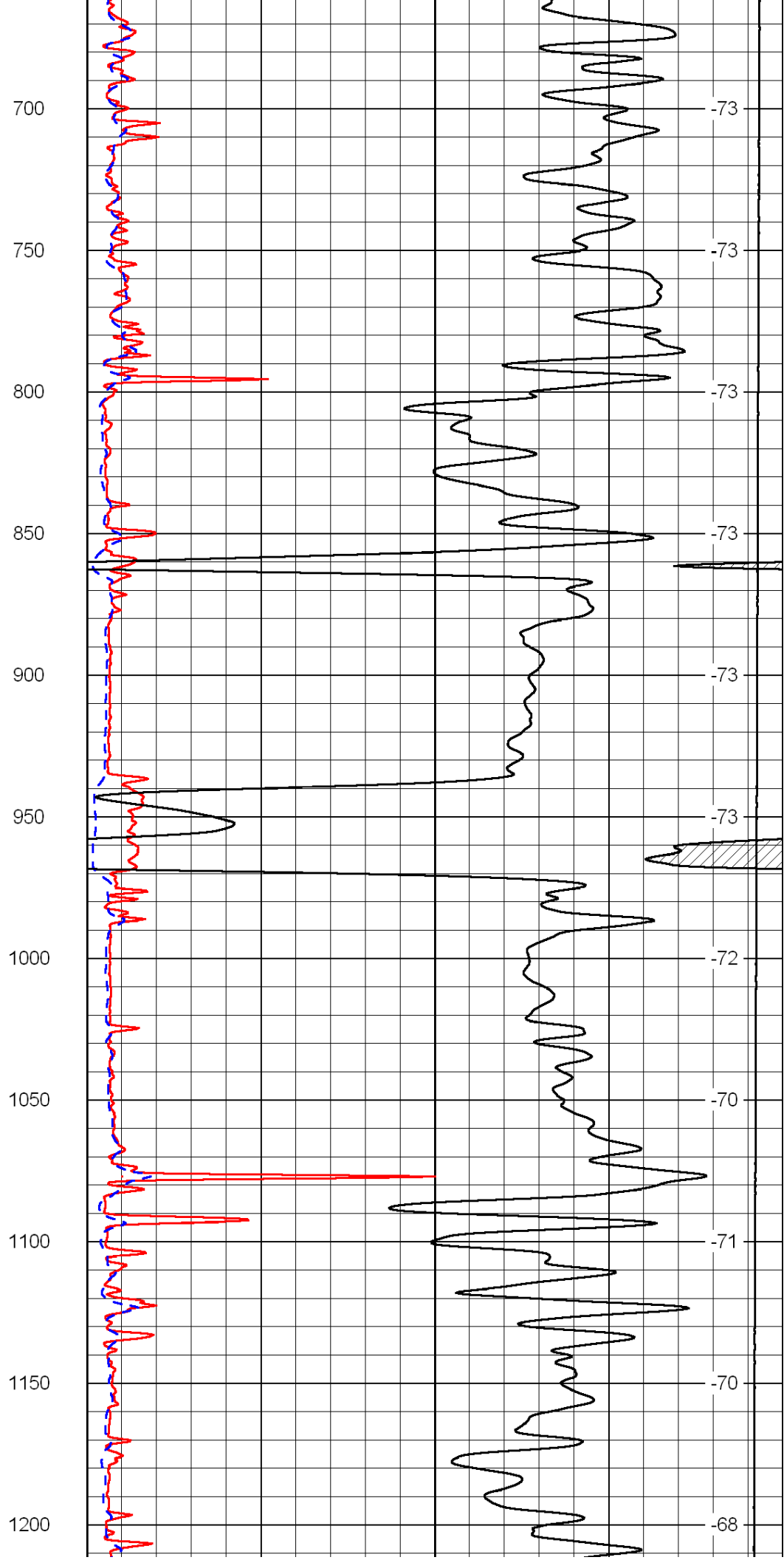
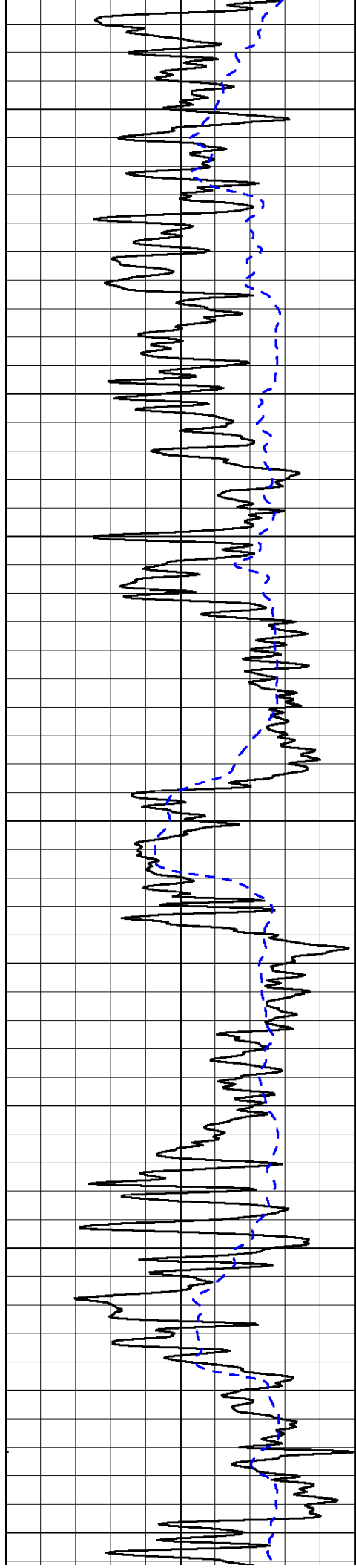
0	Shallow Resistivity	50
0	Deep Resistivity	50

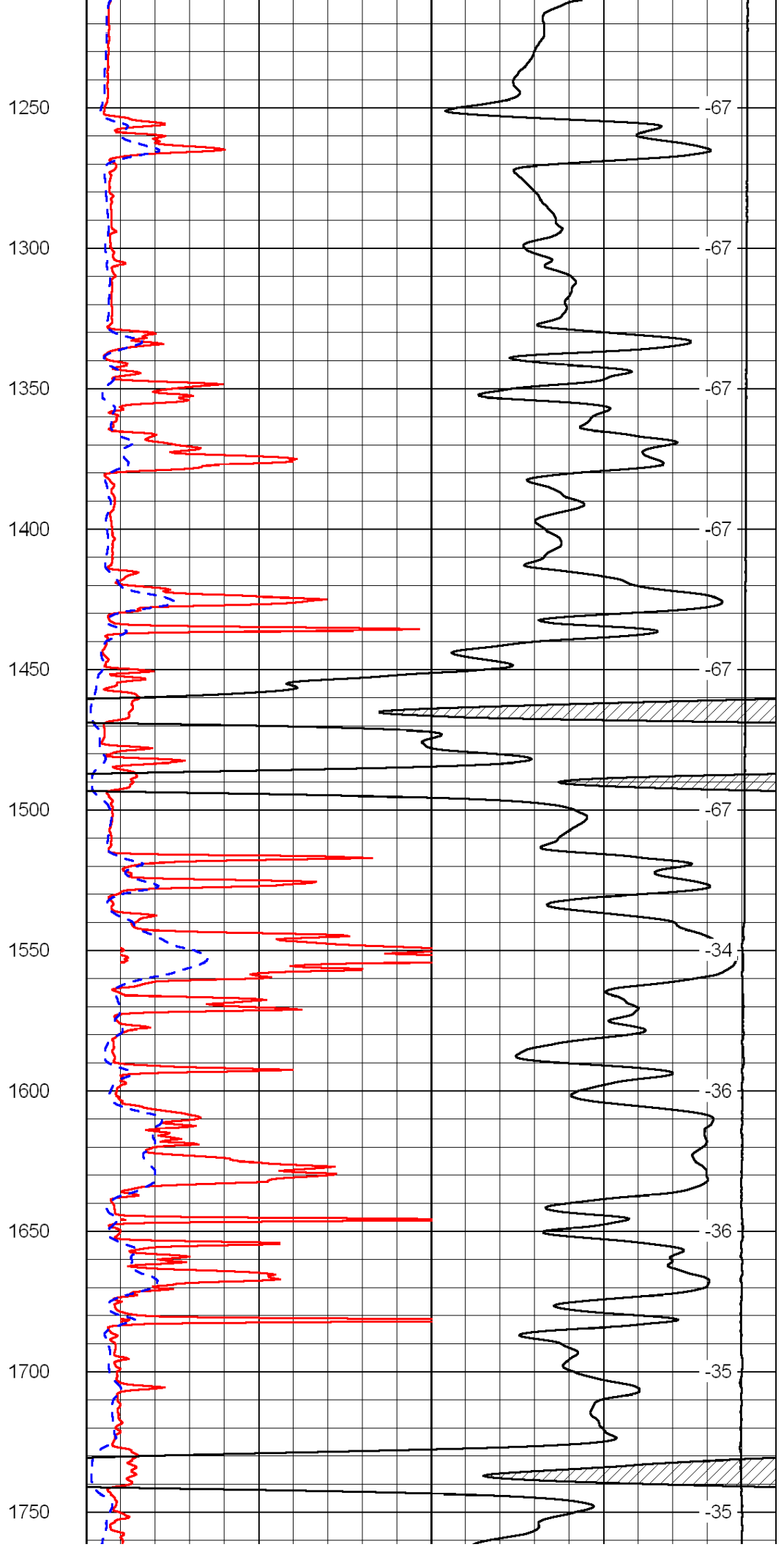
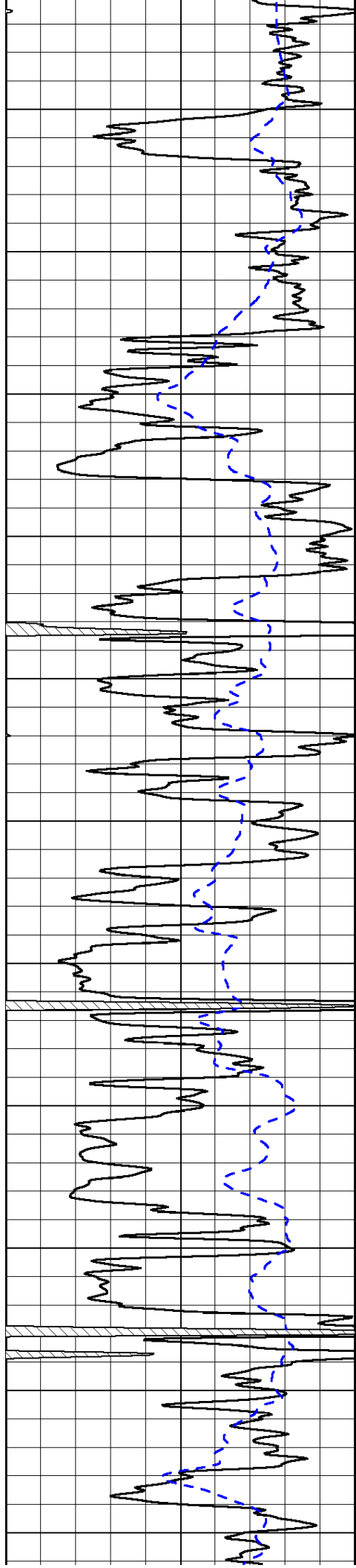
LSPD

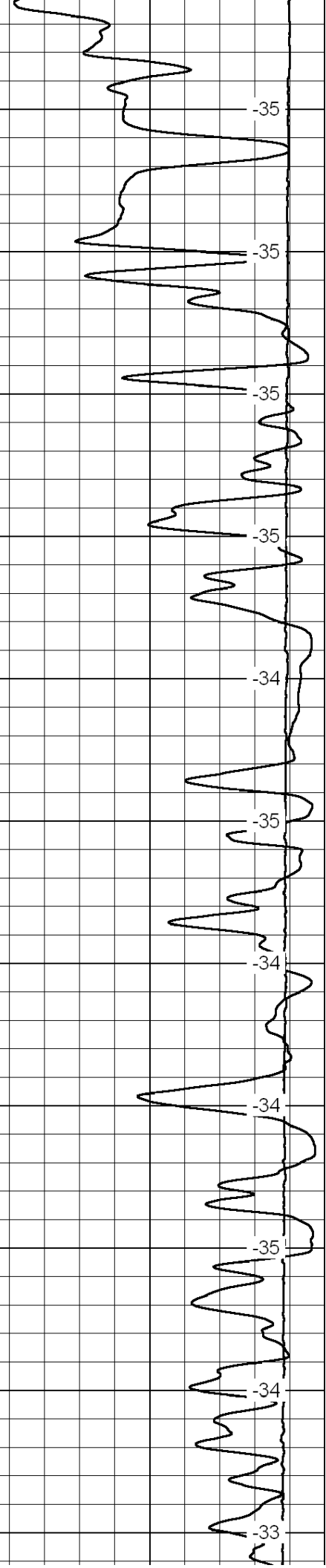
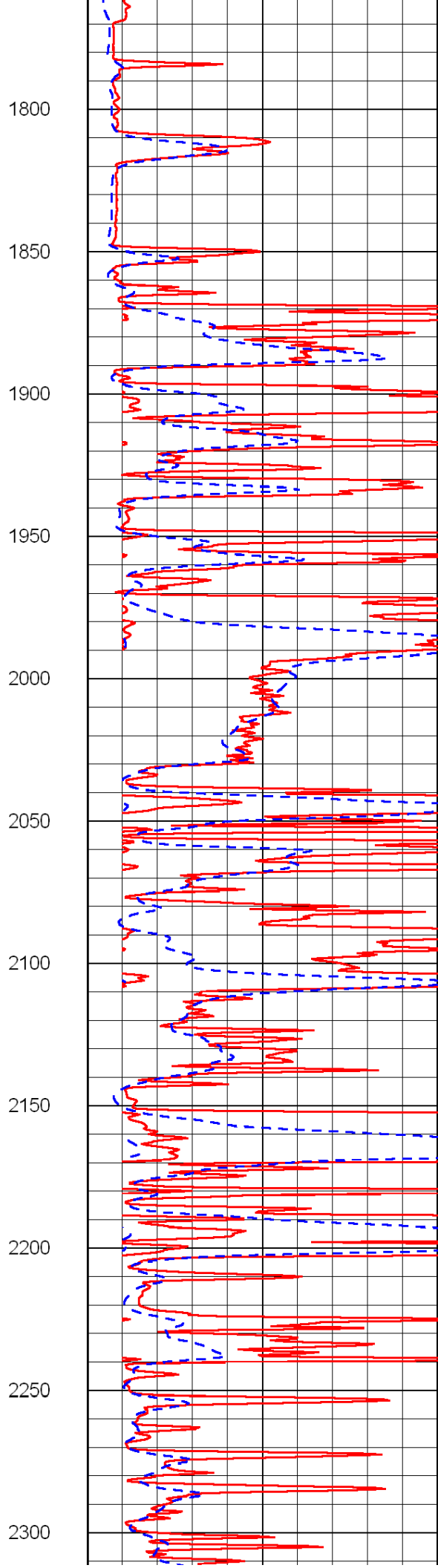
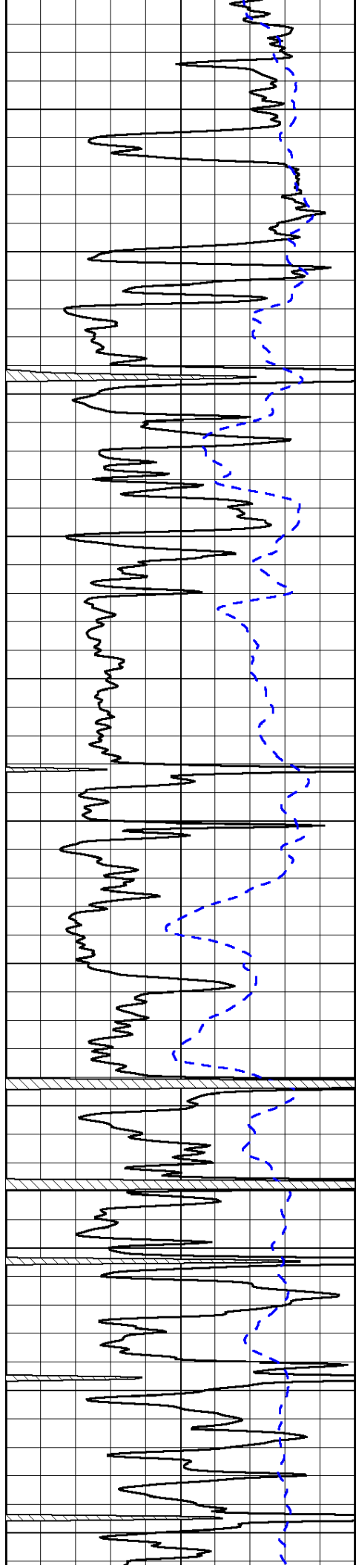
1000	Conductivity	0
15000	Line Tension	0

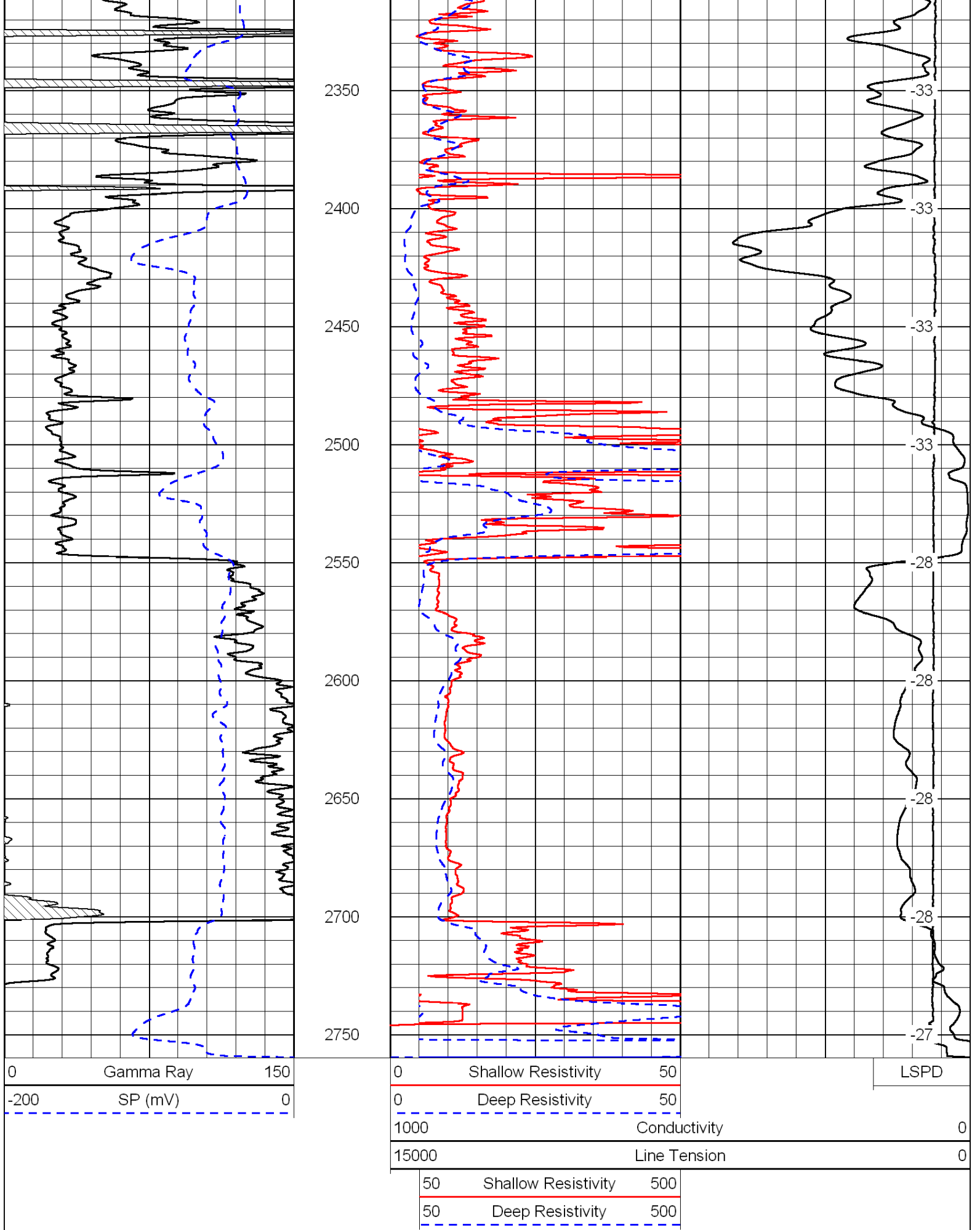
50	Shallow Resistivity	500
50	Deep Resistivity	500









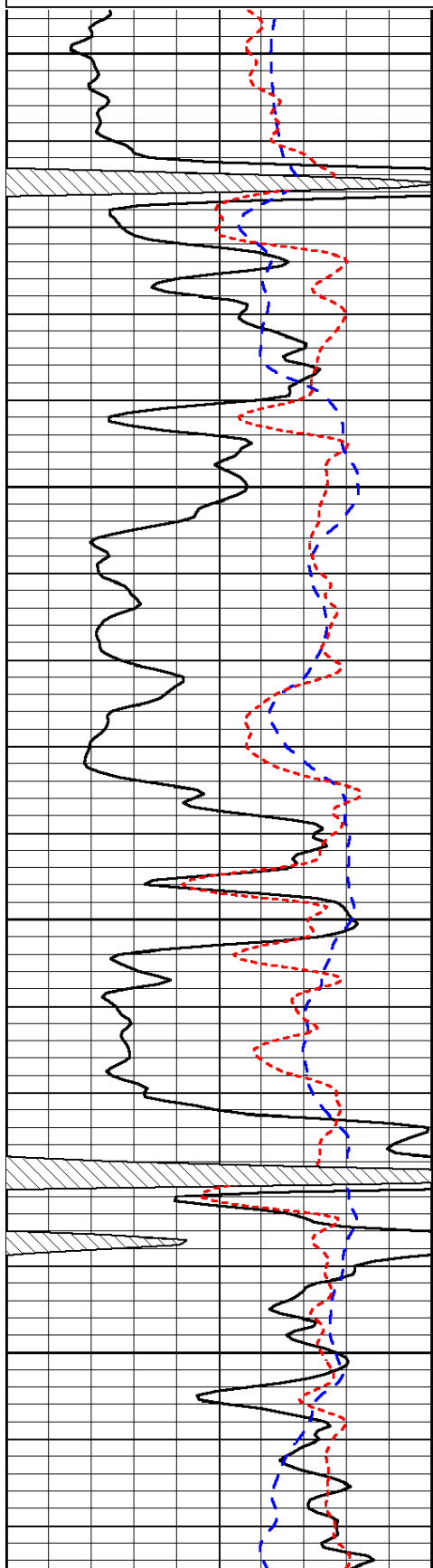


Dataset Pathname: dil/arbksok  
 Presentation Format: dil  
 Dataset Creation: Tue Jun 15 00:14:21 2010  
 Charted by: Depth in Feet scaled 1:240

0	Gamma Ray	150
-200	SP (mV)	0
-160	Rxo / Rt	40

0.2	Deep Resistivity	2000
0.2	Medium Resistivity	2000
0.2	Shallow Resistivity	2000
15000	Line Tension	0

LSPD

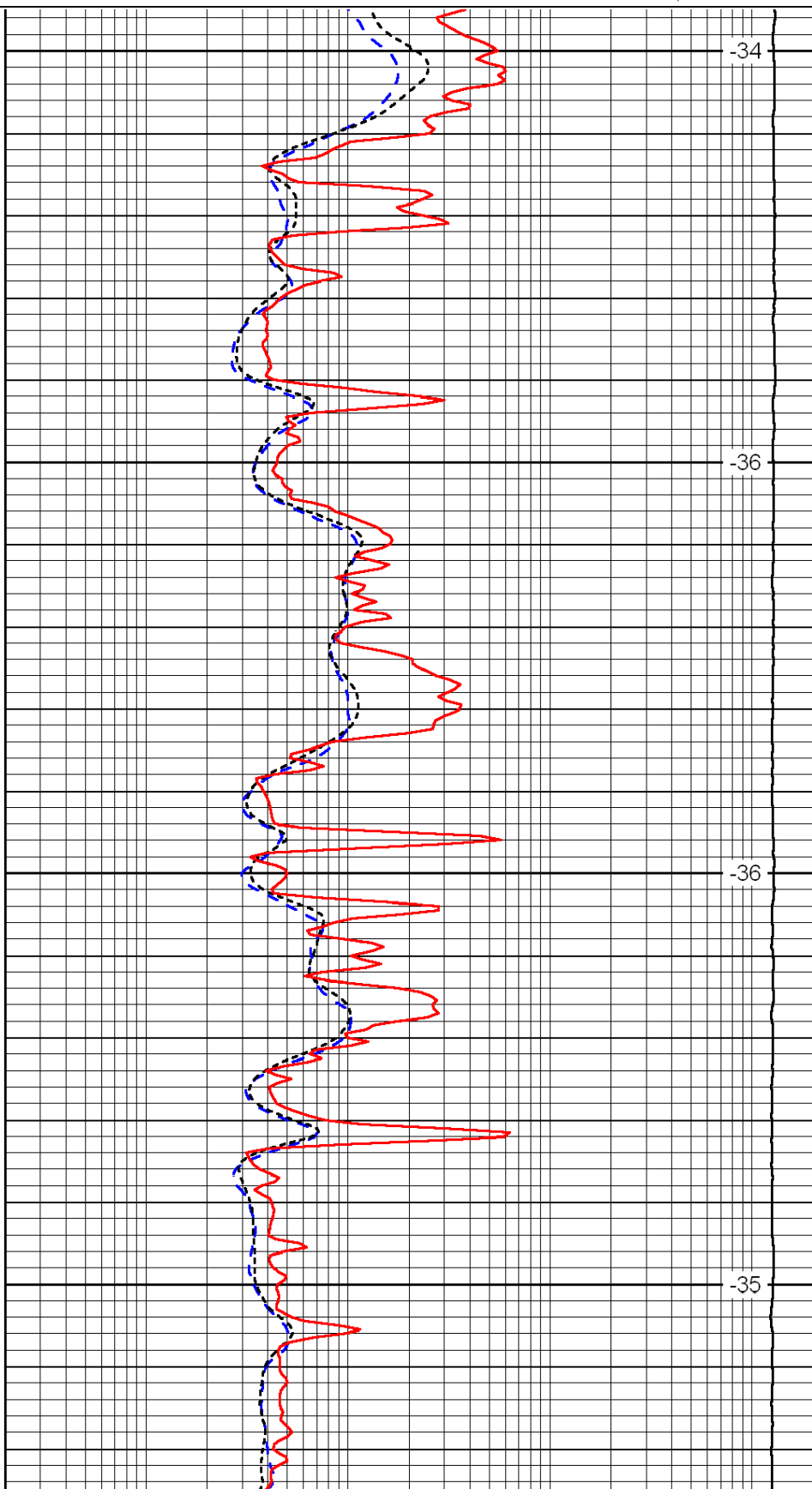


1550

1600

1650

1700

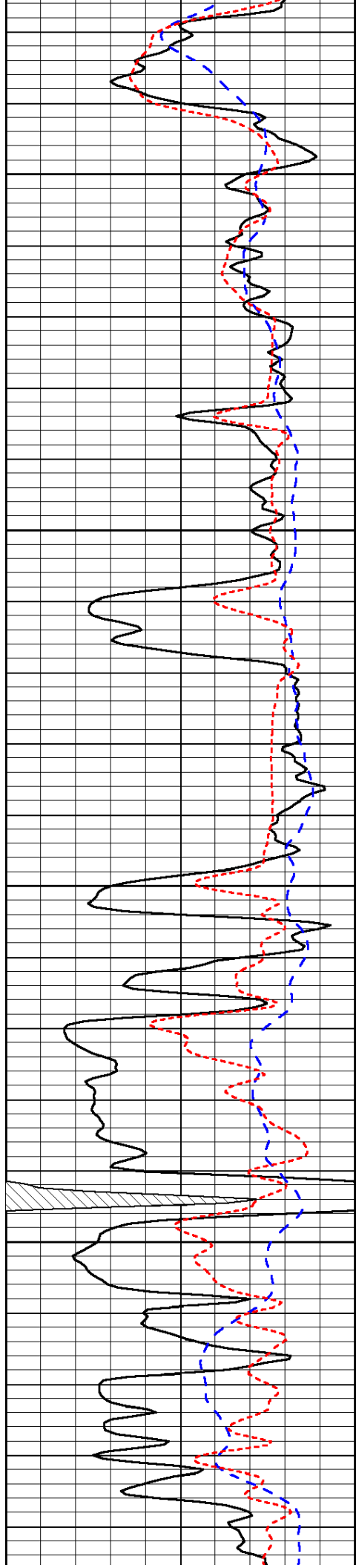


-34

-36

-36

-35

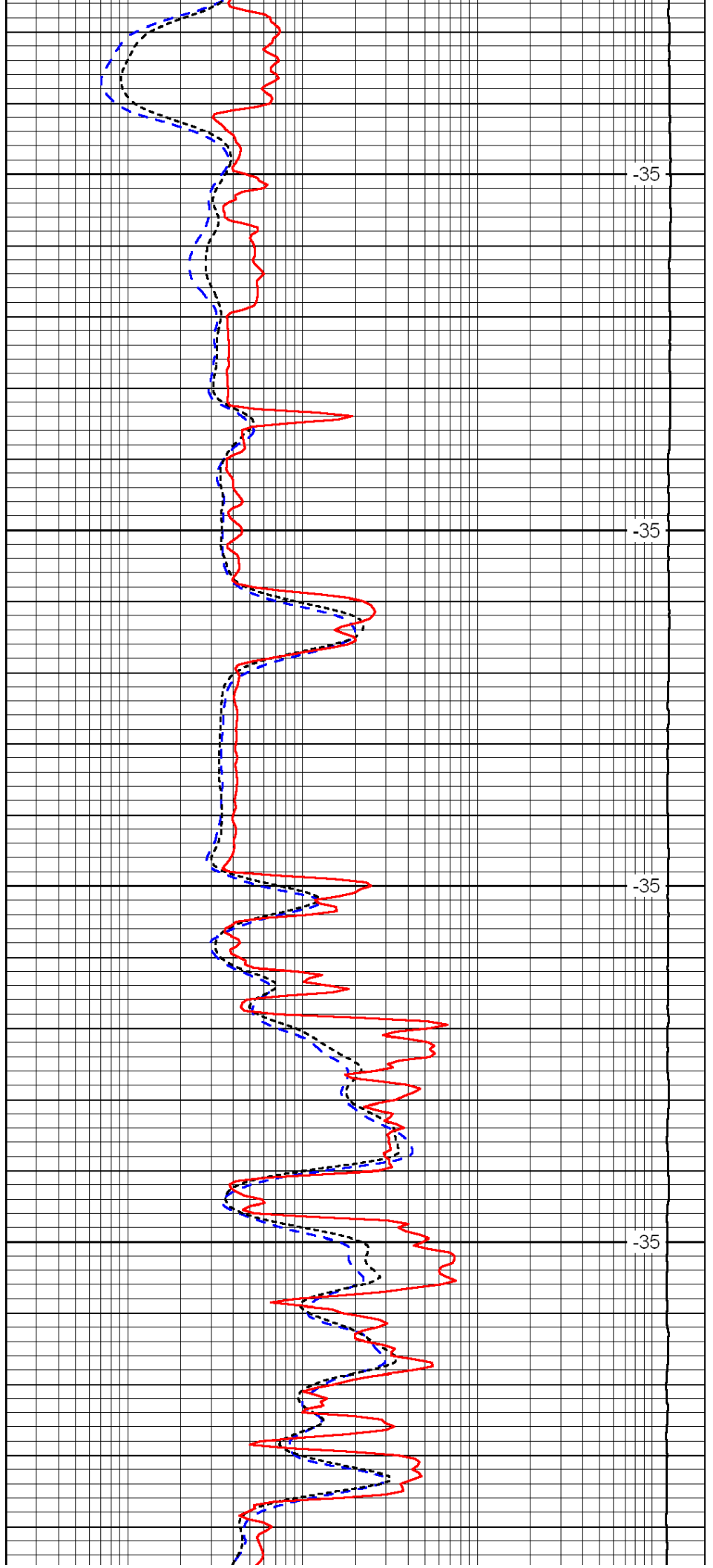


1750

1800

1850

1900

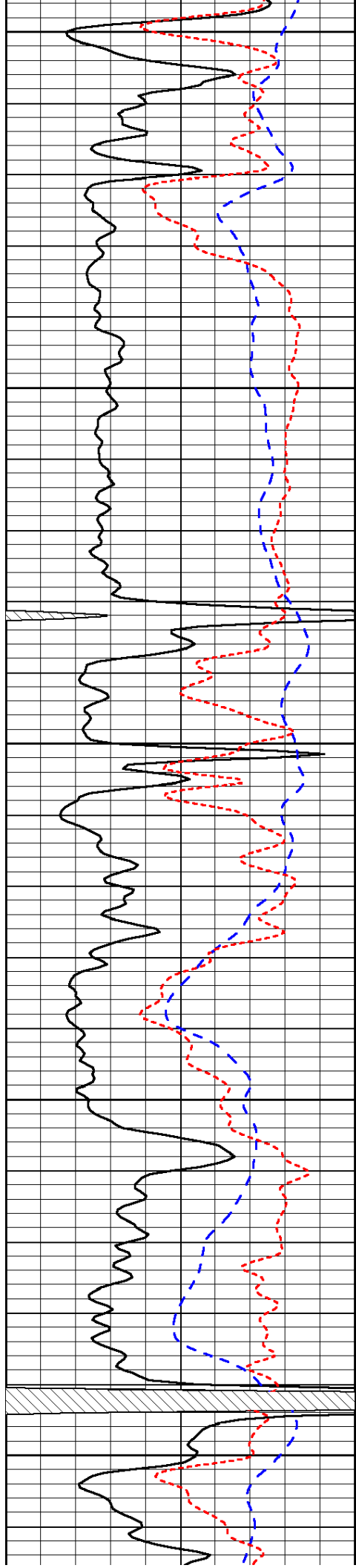


-35

-35

-35

-35



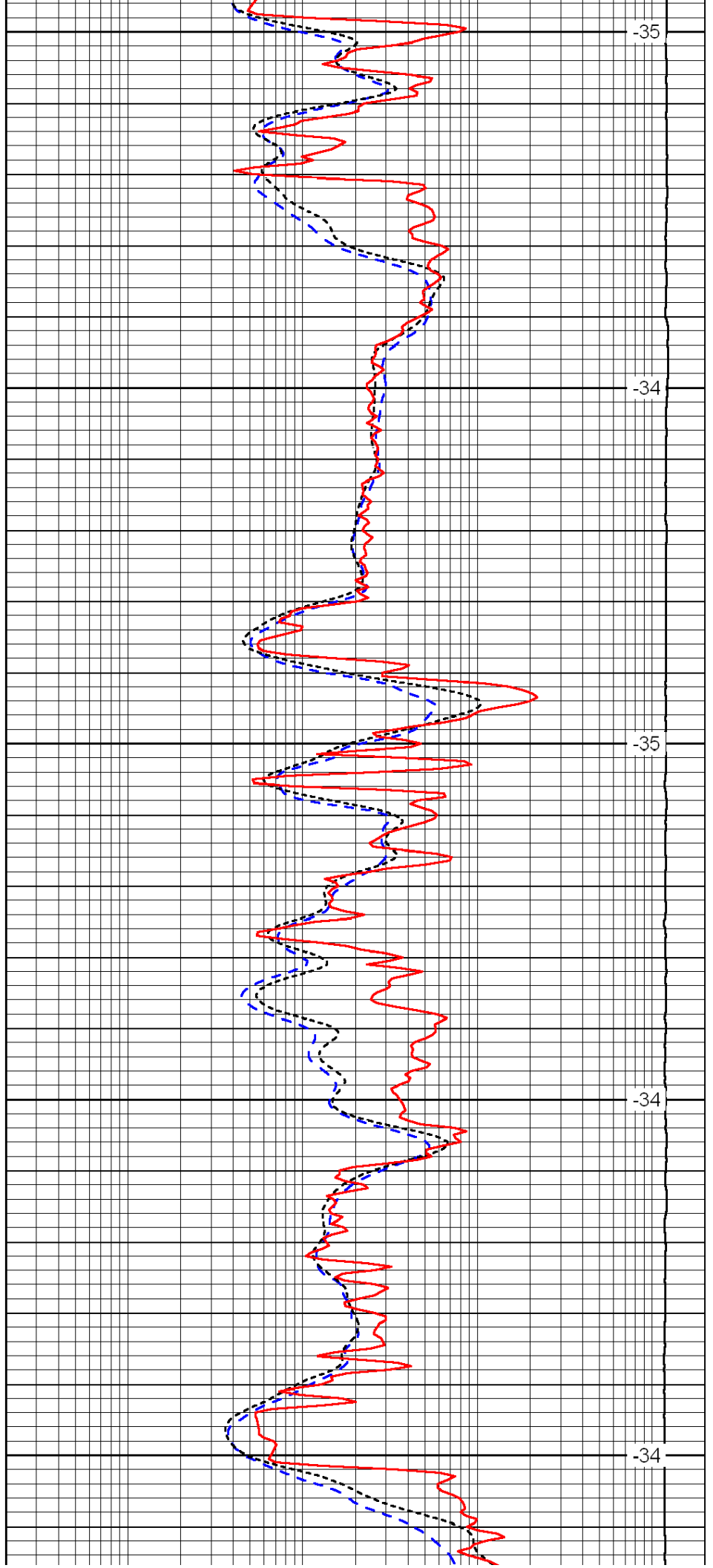
1950

2000

2050

2100

2150



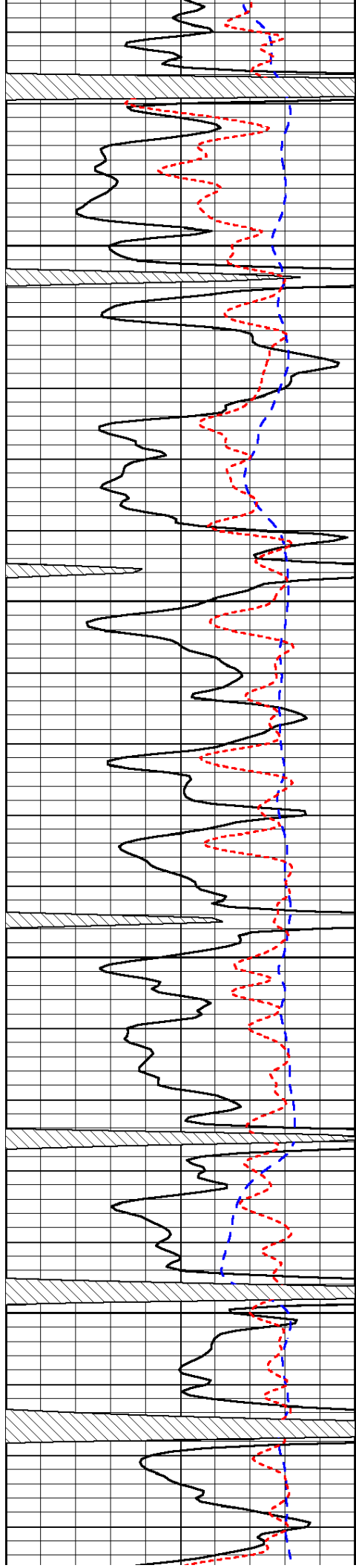
-35

-34

-35

-34

-34

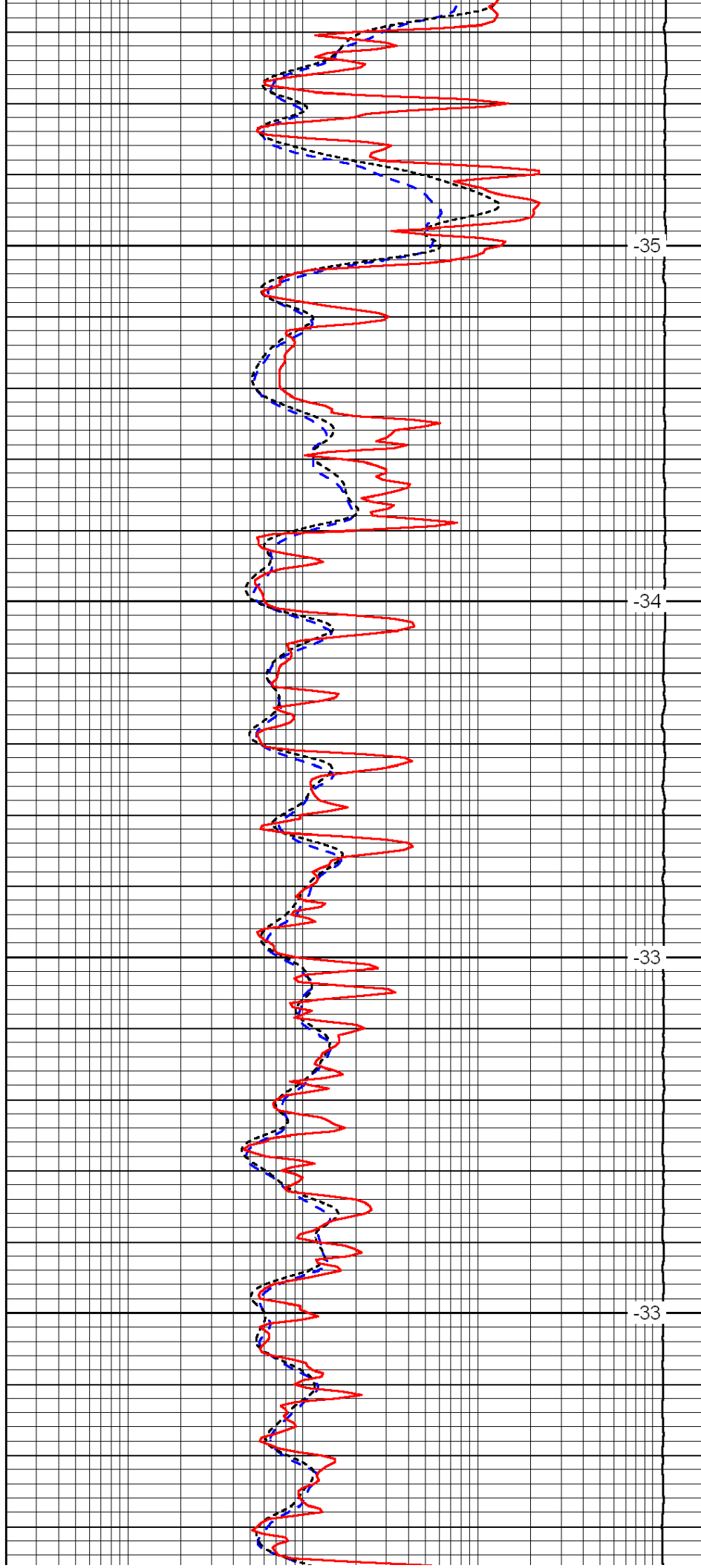


2200

2250

2300

2350

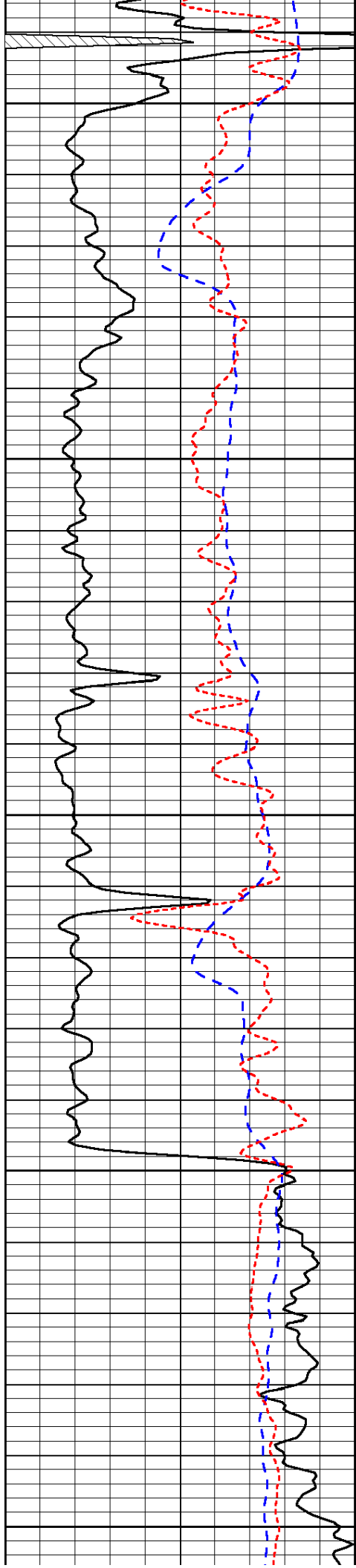


-35

-34

-33

-33



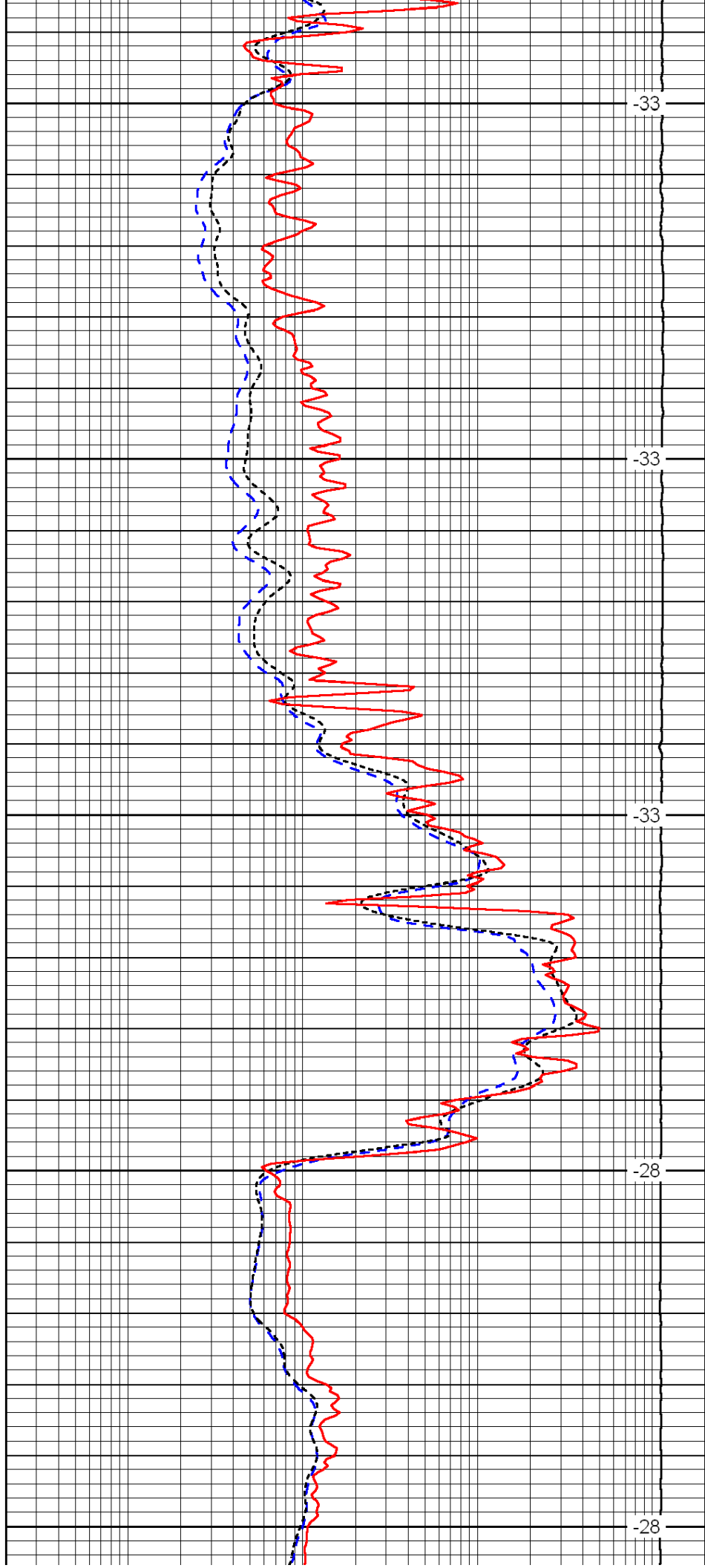
2400

2450

2500

2550

2600



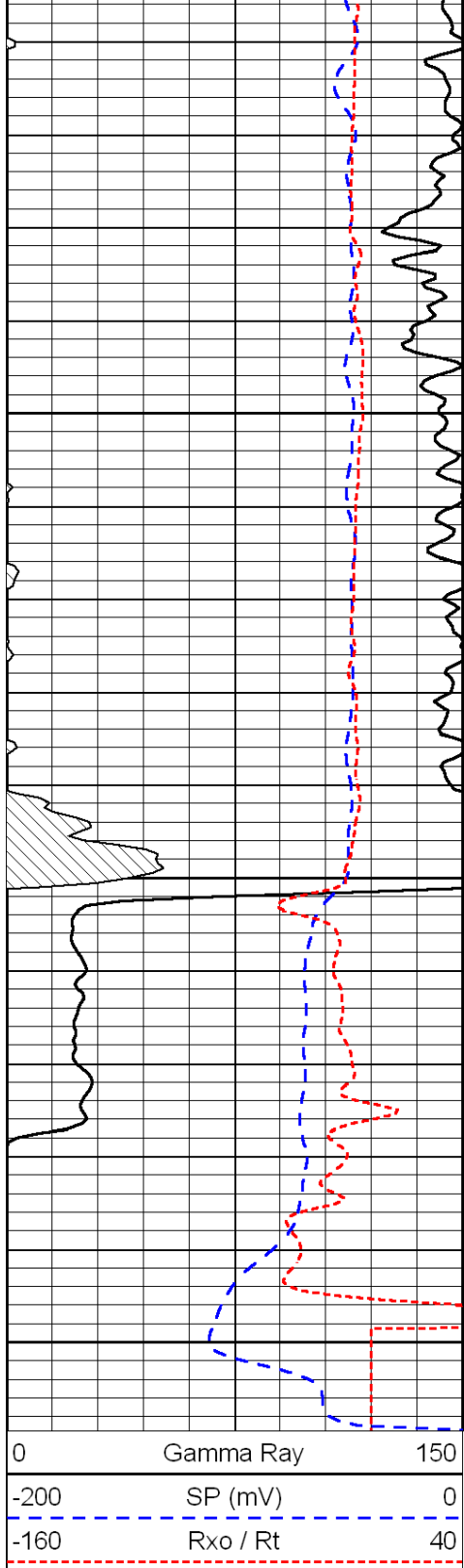
-33

-33

-33

-28

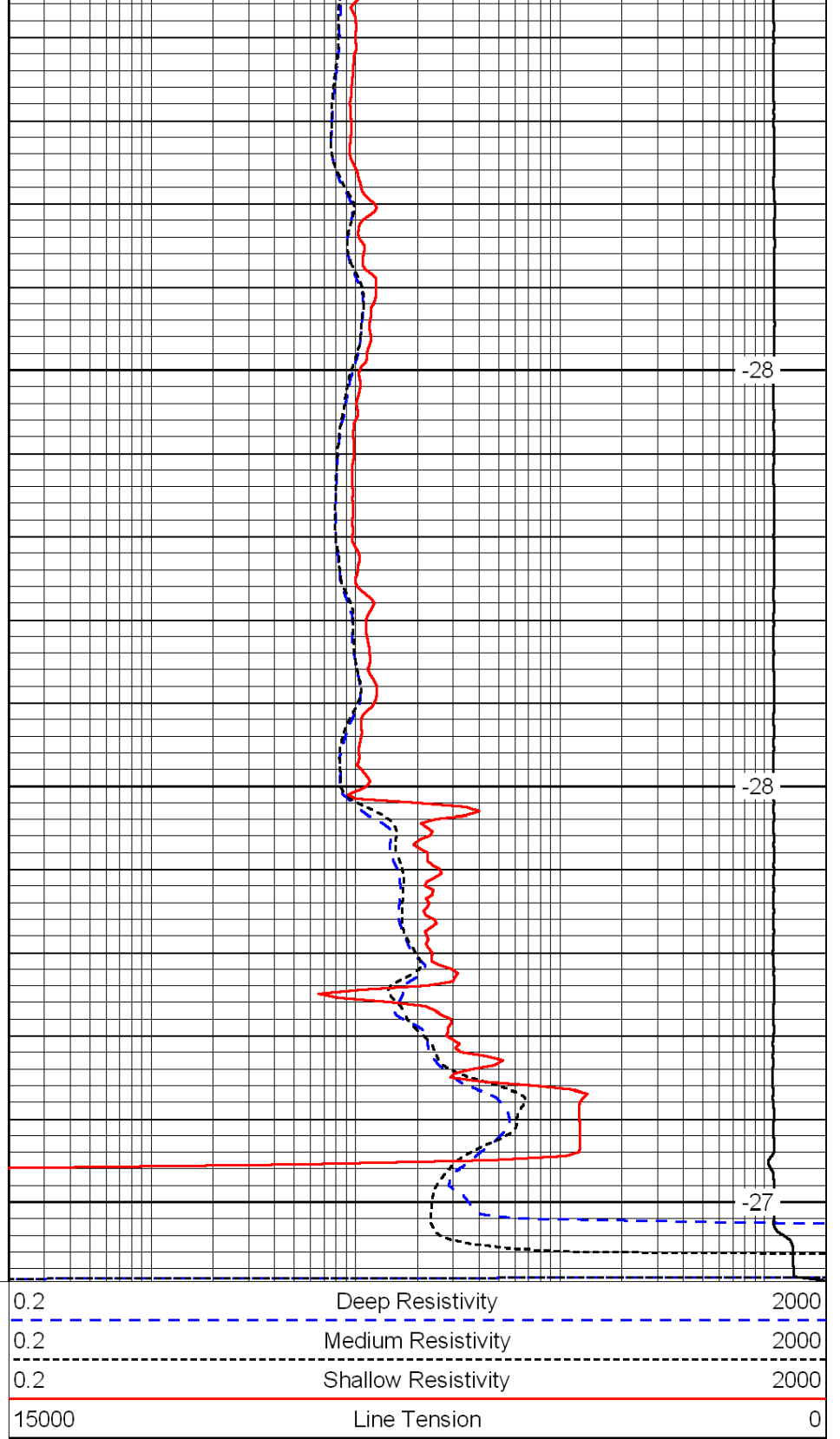
-28



2650

2700

2750



-28

-28

-27

LSPD