



Microresistivity Log

DIGITAL LOG (785) 625-3858

| | | | |
|----------------------------------|--|--|--------|
| API No. | 15-101-22,241-00-00 | | |
| Company | Flatirons Resources L.L.C. | | |
| Well | Lawrence No. 32-23 | | |
| Field | Wildcat | | |
| County | Lane | State | Kansas |
| Location | SW SW SE NE 2,450' FNL & 1,180' FEL | | |
| Sec: 23 | Twp: 16S | Rge: 28W | |
| Other Services CNL/CDL DIL | | Elevation K.B. 2659 D.F. 2654 G.L. 2654 | |

| | | | |
|------------------------|---------------|-----------|-----------------------|
| Permanent Datum | Ground Level | Elevation | 2654 |
| Log Measured From | Kelly Bushing | 5 | Ft. Above Perm. Datum |
| Drilling Measured From | Kelly Bushing | | |
| Date | 6/2/2010 | | |
| Run Number | Two | | |
| Depth Driller | 4550 | | |
| Depth Logger | 4552 | | |
| Bottom Logged Interval | 4551 | | |
| Top Log Interval | 3500 | | |
| Casing Driller | 8.625 @ 218 | | |
| Casing Logger | 217 | | |
| Bit Size | 7.875 | | |
| Type Fluid in Hole | Chemical | | |
| Salinity, ppm CL | 3300 | | |
| Density / Viscosity | 9.0 | 52 | |
| pH / Fluid Loss | 9.0 | 10.0 | |
| Source of Sample | Flowline | | |
| Rm @ Meas. Temp | .82 | @ 78 | |
| Rmf @ Meas. Temp | .62 | @ 78 | |
| Rmc @ Meas. Temp | 1.1 | @ 78 | |
| Source of Rmf / Rmc | Charts | | |
| Rm @ BHT | .30 | @ 123 | |
| Operating Rig Time | 4 Hours | | |
| Max Rec. Temp. F | 123 | | |
| Equipment Number | 10 | | |
| Location | Hays | | |
| Recorded By | J. Long | | |
| Witnessed By | Tim Priest | | |

<<< Fold Here >>>

All interpretations are opinions based on inferences from electrical or other measurements and we cannot and do not guarantee the accuracy or correctness of any interpretation, and we shall not, except in the case of gross or willful negligence on our part, be liable or responsible for any loss, costs, damages, or expenses incurred or sustained by anyone resulting from any interpretation made by any of our officers, agents or employees. These interpretations are also subject to our general terms and conditions set out in our current Price Schedule.

Comments

Thank you for using Log-Tech, Inc.
(785) 625-3858

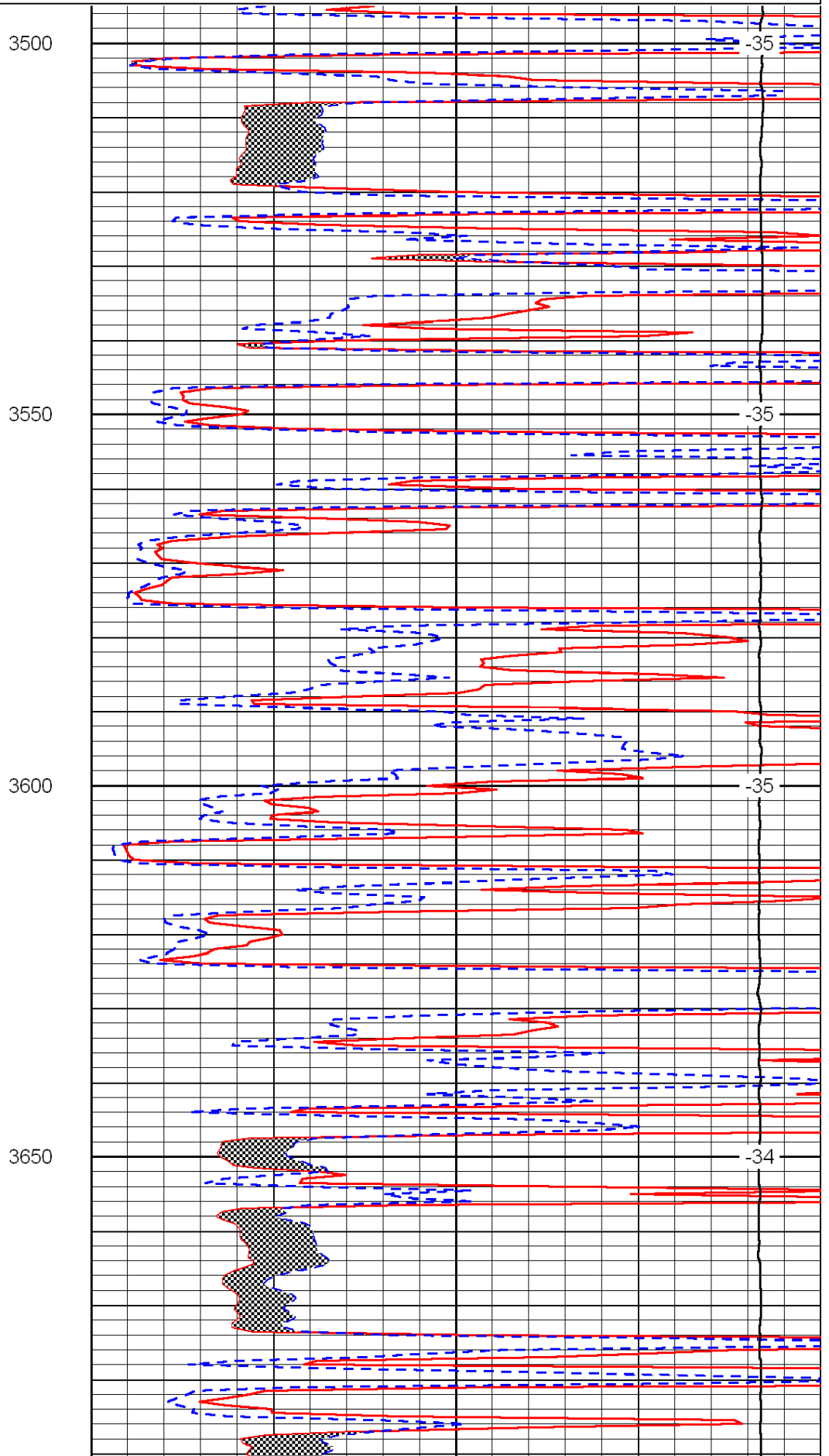
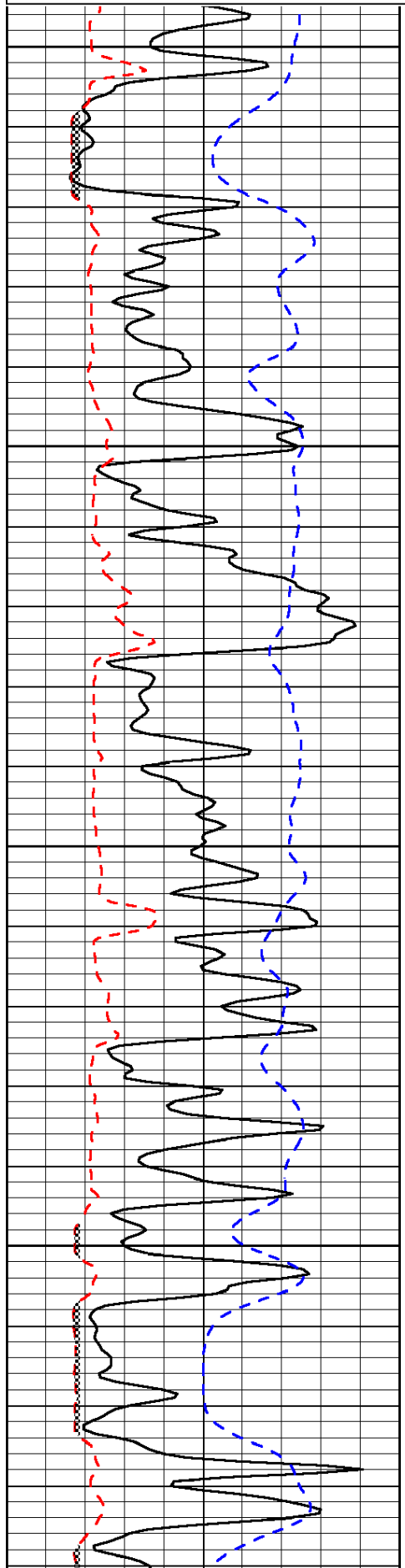
Shields, 3 1/2 East to Pawnee Rd (Cathouse Rd), 1 1/2 North, West Into

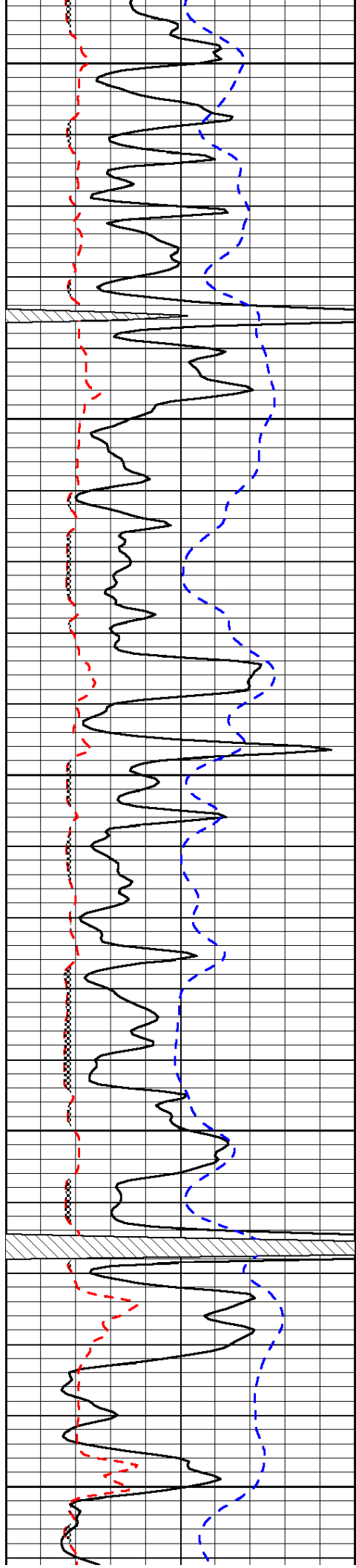
Database File: c:\warrior\data\flatirons_lawrence no. 32-23\flatirons.db
 Dataset Pathname: dil/flatstck
 Presentation Format: micro
 Dataset Creation: Wed Jun 02 09:26:50 2010
 Charted by: Depth in Feet scaled 1:240

| | | |
|------|--------------------------|-----|
| 0 | Gamma Ray | 150 |
| 6 | Micro Log Caliper (GAPI) | 16 |
| -200 | SP (mV) | 0 |

| | | |
|-------|---------------------|----|
| 0 | Micro Inverse 1 X 1 | 40 |
| 0 | Micro Normal 2" | 40 |
| 15000 | Line Weight | 0 |

LSPD





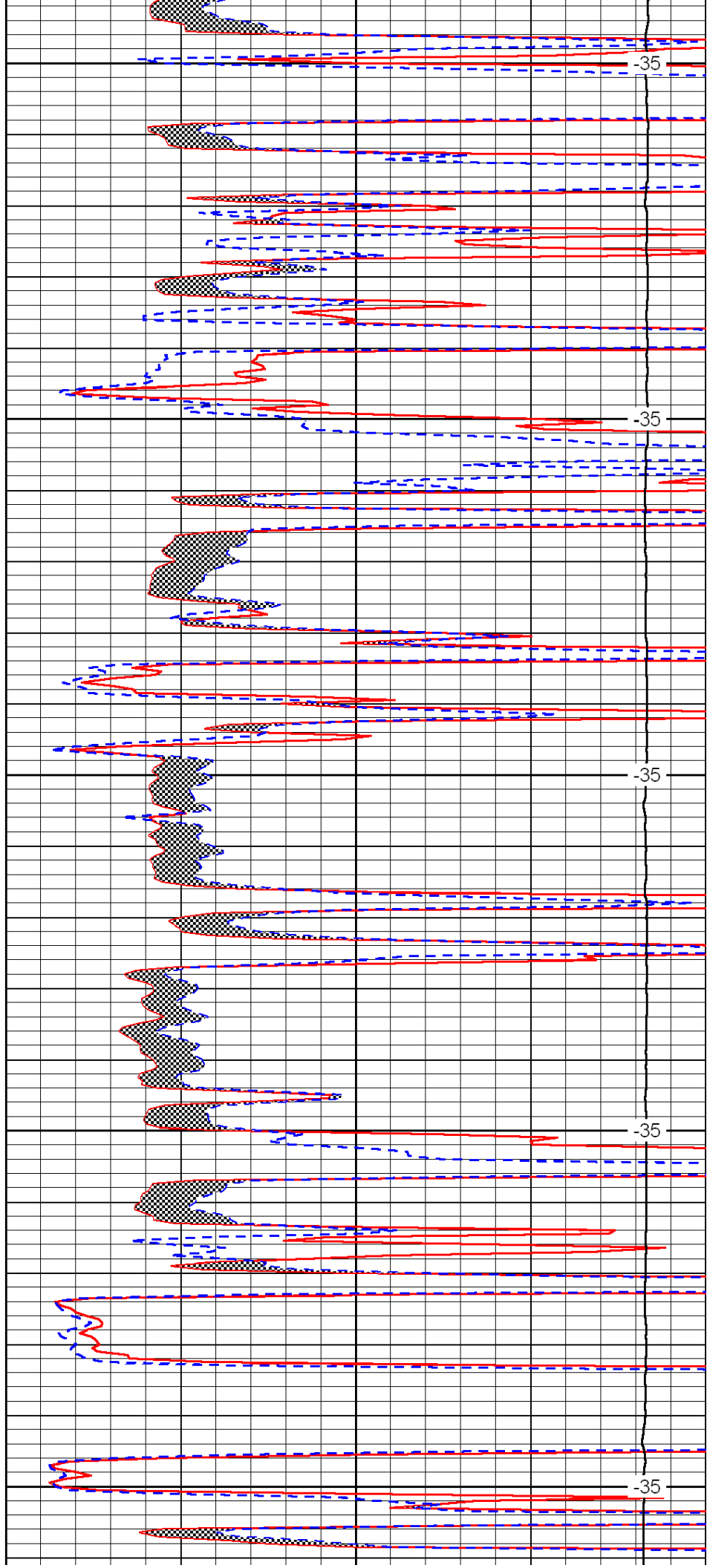
3700

3750

3800

3850

3900



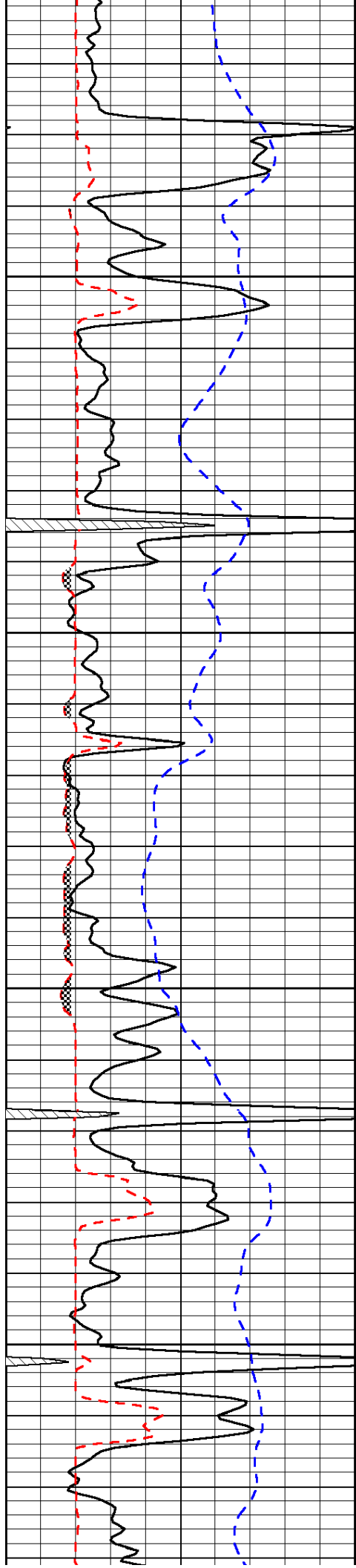
-35

-35

-35

-35

-35

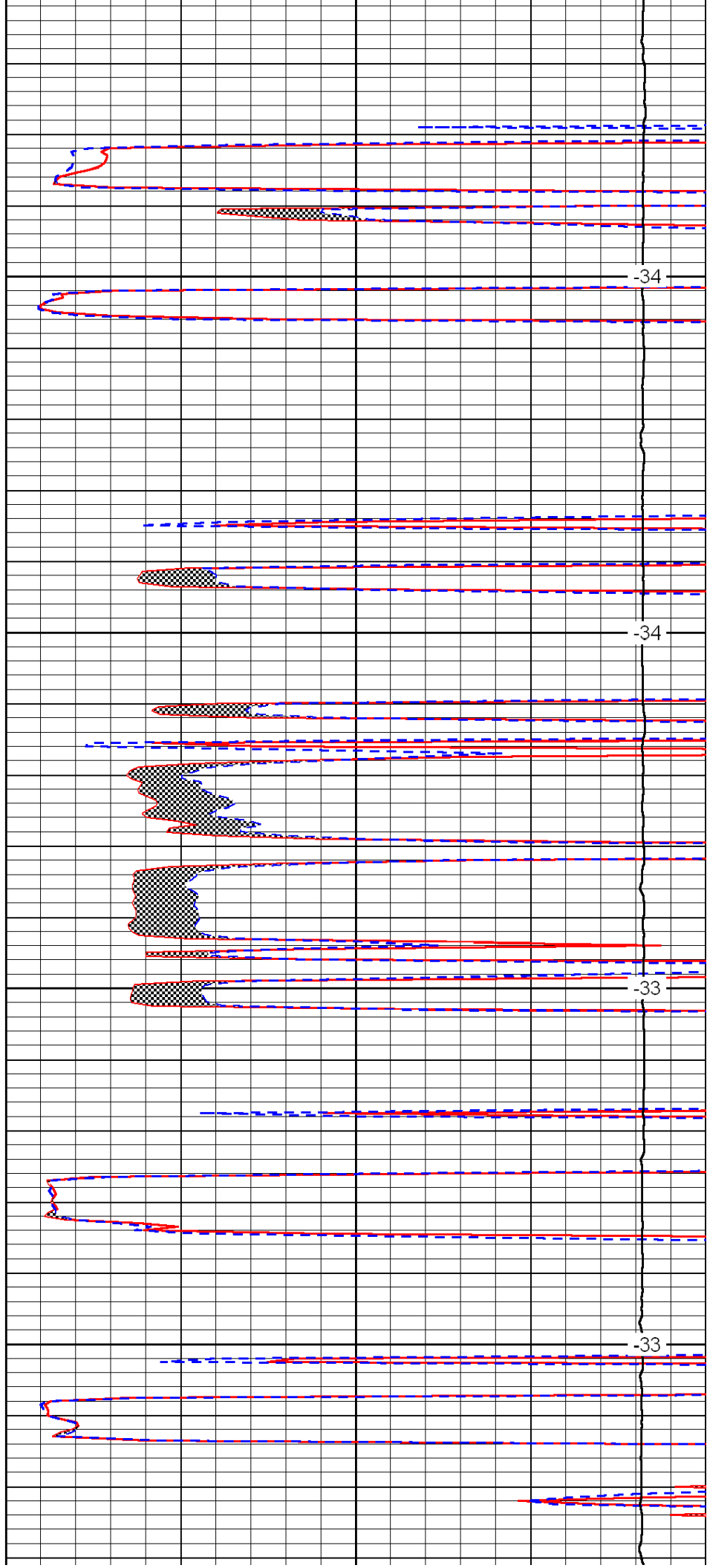


3950

4000

4050

4100

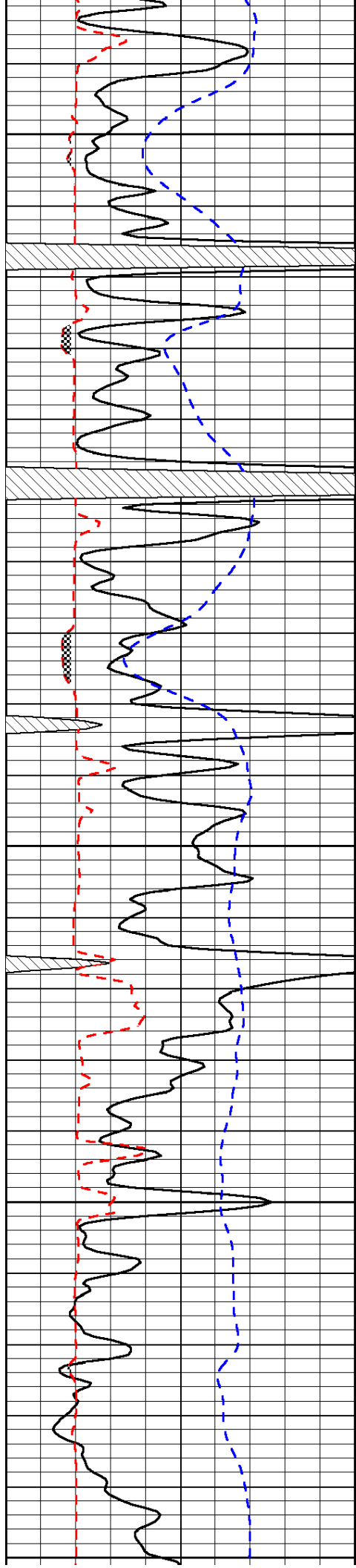


-34

-34

-33

-33



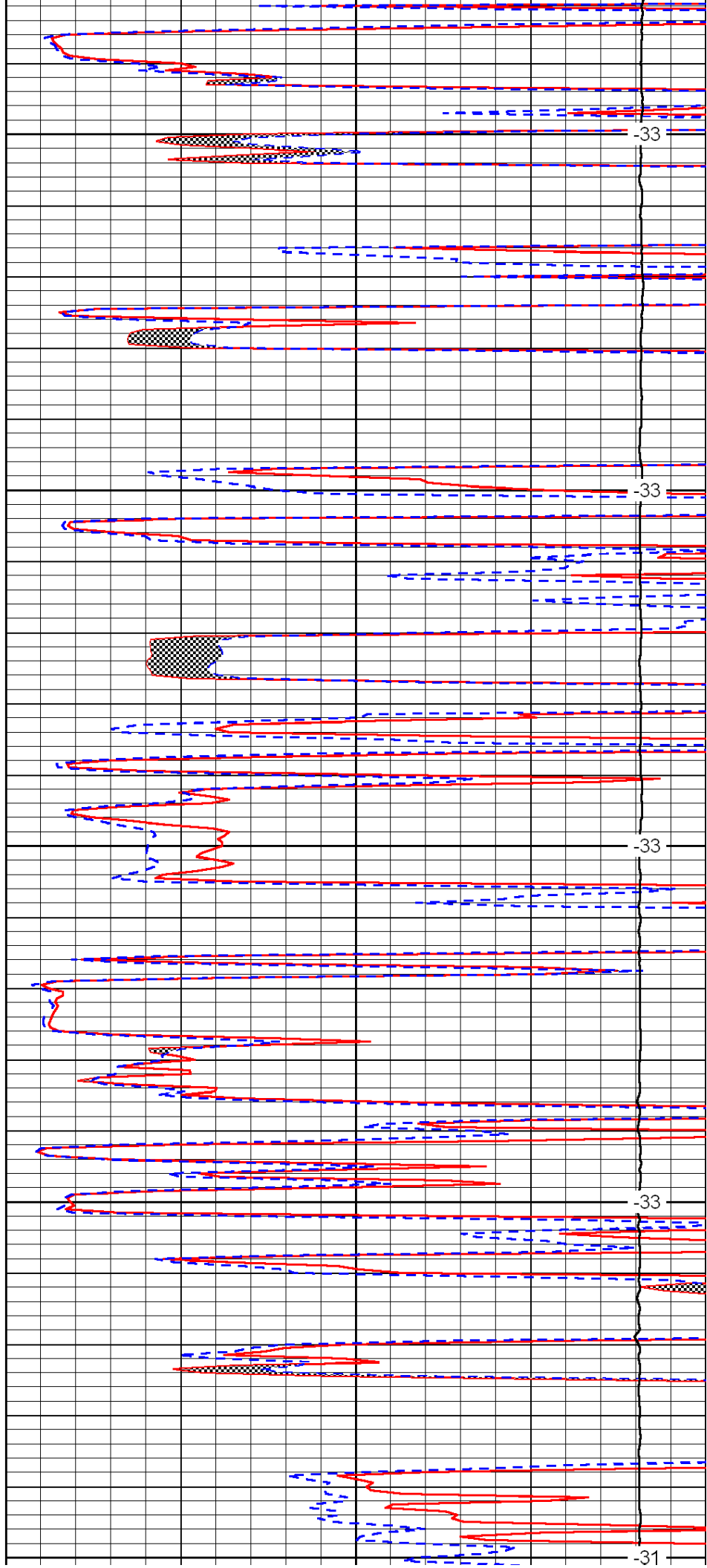
4150

4200

4250

4300

4350



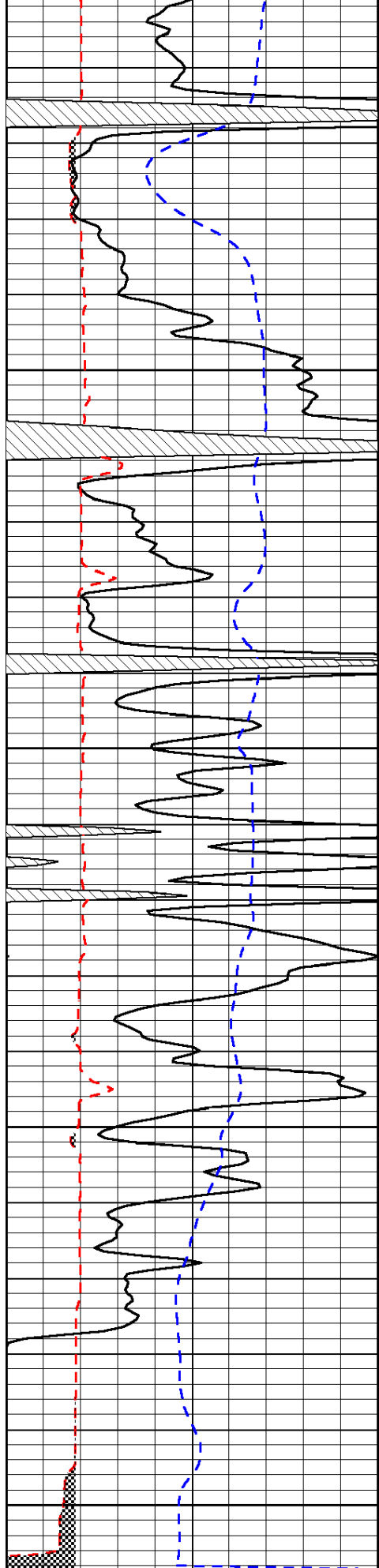
-33

-33

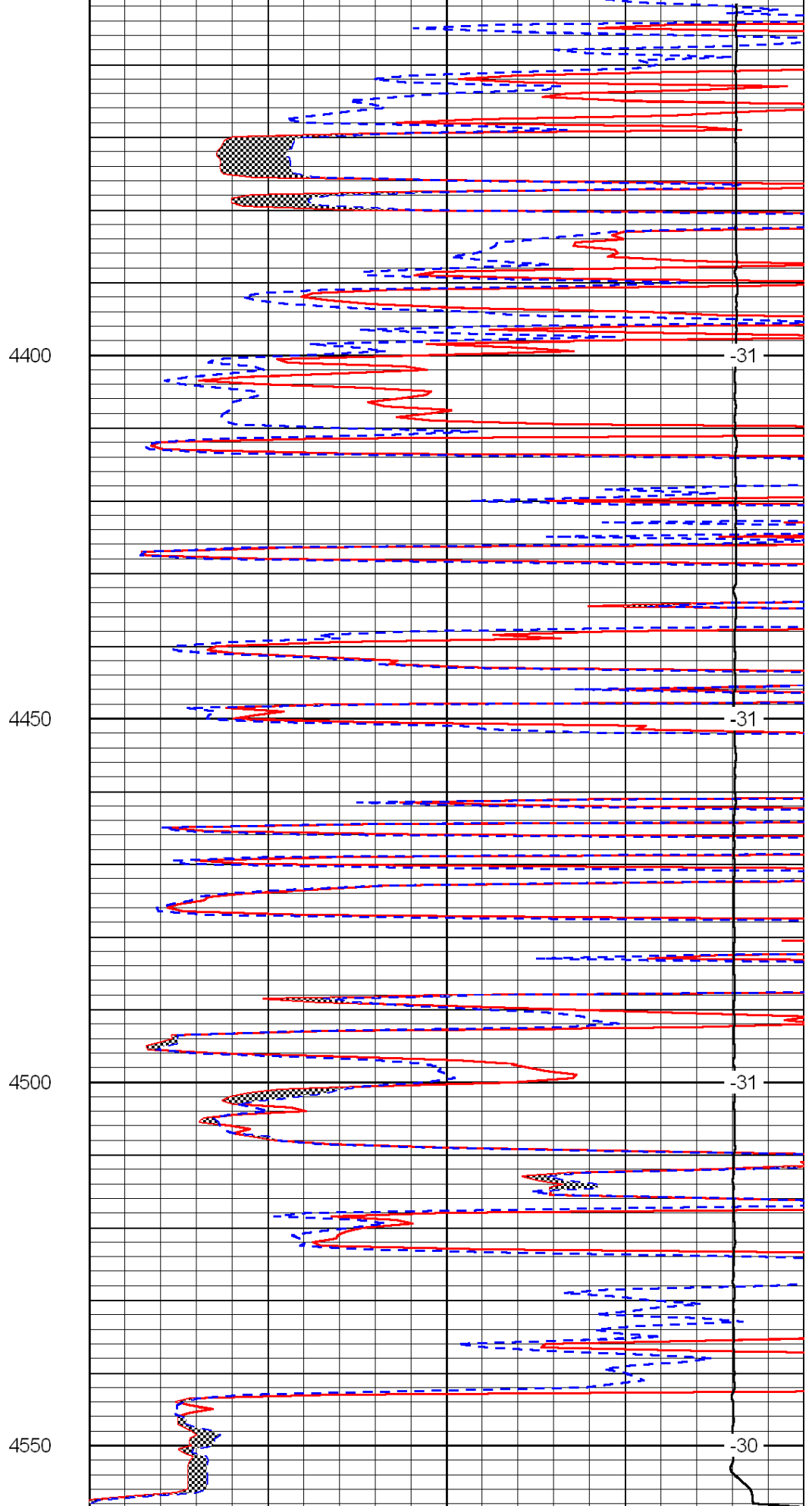
-33

-33

-31



| | | |
|------|--------------------------|-----|
| 0 | Gamma Ray | 150 |
| 6 | Micro Log Caliper (GAPI) | 16 |
| -200 | SP (mV) | 0 |



| | | |
|-------|---------------------|----|
| 0 | Micro Inverse 1 X 1 | 40 |
| 0 | Micro Normal 2'' | 40 |
| 15000 | Line Weight | 0 |

