



# Dual Induction Log

DIGITAL LOG (785) 625-3858

API No.	15-101-22,241-00-00	
Company	Flatirons Resources L.L.C.	
Well	Lawrence No. 32-23	
Field	Wildcat	
County	Lane	State
Location	SW SW SE NE 2,450' FNL & 1,180' FEL	
Other Services	CNL/CDL MEL	
Sec:	23	Twp: 16S Rge: 28W
Permanent Datum	Ground Level	Elevation 2654
Log Measured From	Kelly Bushing	5 Ft. Above Perm. Datum
Drilling Measured From	Kelly Bushing	

Date	6/2/2010
Run Number	One
Depth Driller	4550
Depth Logger	4552
Bottom Logged Interval	4551
Top Log Interval	200
Casing Driller	8.625 @ 218
Casing Logger	217
Bit Size	7.875
Type Fluid in Hole	Chemical
Salinity, ppm CL	3300
Density / Viscosity	9.0   52
pH / Fluid Loss	9.0   10.0
Source of Sample	Flowline
Rm @ Meas. Temp	.82 @ 78
Rmf @ Meas. Temp	.62 @ 78
Rmc @ Meas. Temp	1.1 @ 78
Source of Rmf / Rmc	Charts
Rm @ BHT	.30 @ 123
Operating Rig Time	4 Hours
Max Rec. Temp. F	123
Equipment Number	10
Location	Hays
Recorded By	J. Long
Witnessed By	Tim Priest

<<< Fold Here >>>

All interpretations are opinions based on inferences from electrical or other measurements and we cannot and do not guarantee the accuracy or correctness of any interpretation, and we shall not, except in the case of gross or willful negligence on our part, be liable or responsible for any loss, costs, damages, or expenses incurred or sustained by anyone resulting from any interpretation made by any of our officers, agents or employees. These interpretations are also subject to our general terms and conditions set out in our current Price Schedule.

### Comments

Thank you for using Log-Tech, Inc.  
(785) 625-3858

Shields, 3 1/2 East to Pawnee Rd (Cathouse Rd), 1 1/2 North, West Into

Database File: c:\warrior\data\flatirons\_lawrence no. 32-23\flatirons.db  
 Dataset Pathname: dil\flatstck  
 Presentation Format: dil2in  
 Dataset Creation: Wed Jun 02 09:26:50 2010  
 Charted by: Depth in Feet scaled 1:600

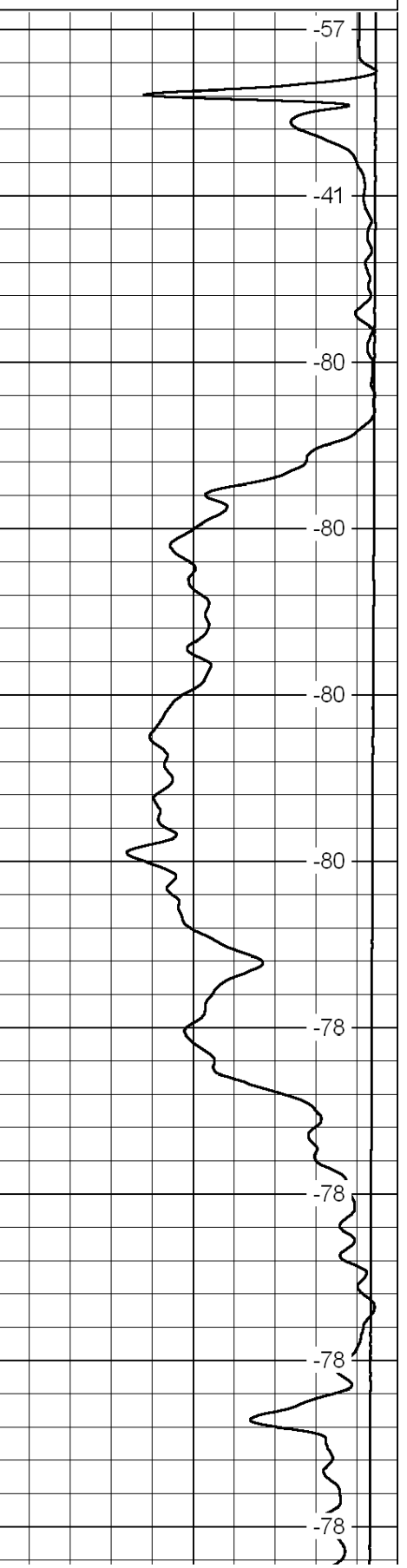
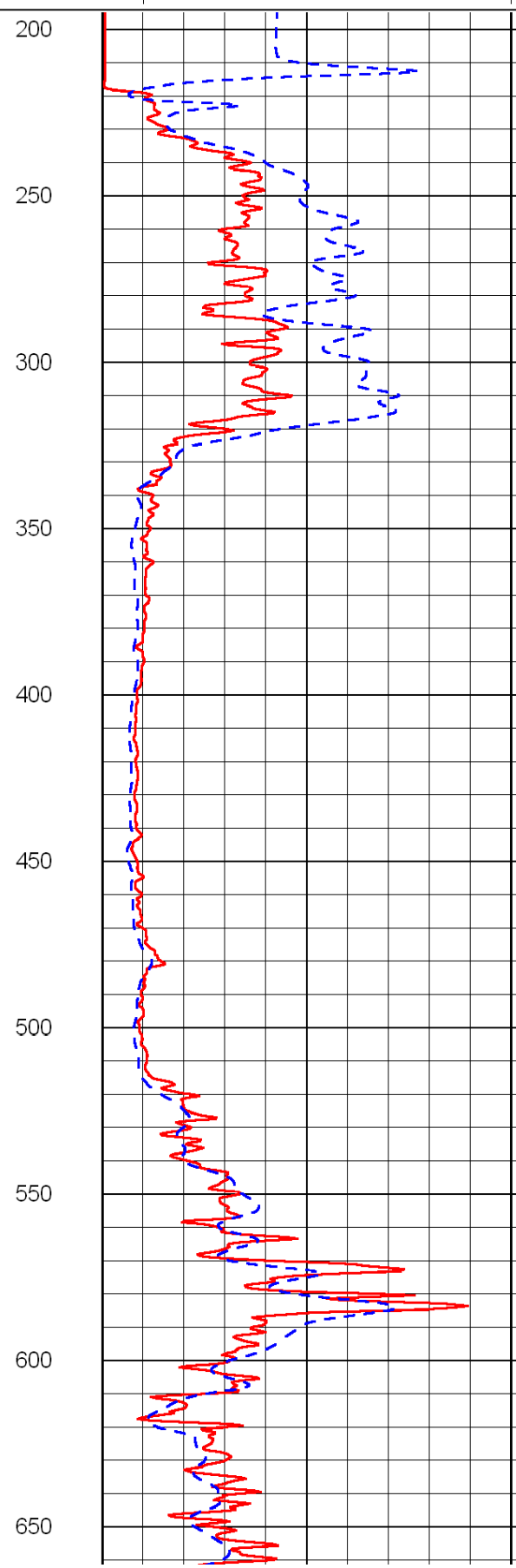
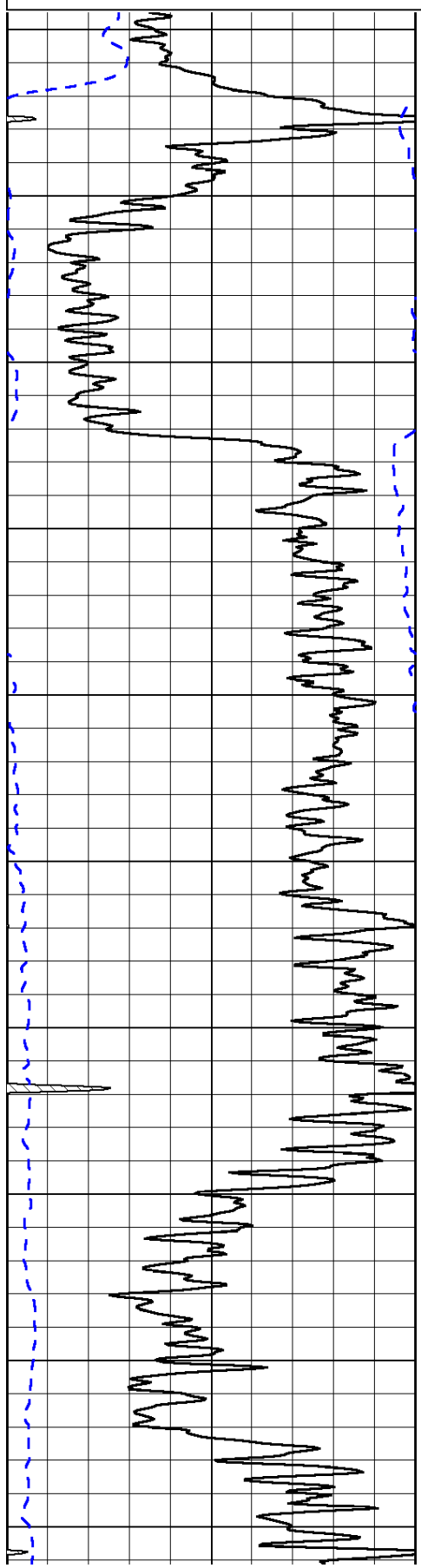
0	Gamma Ray	150
-200	SP (mV)	0

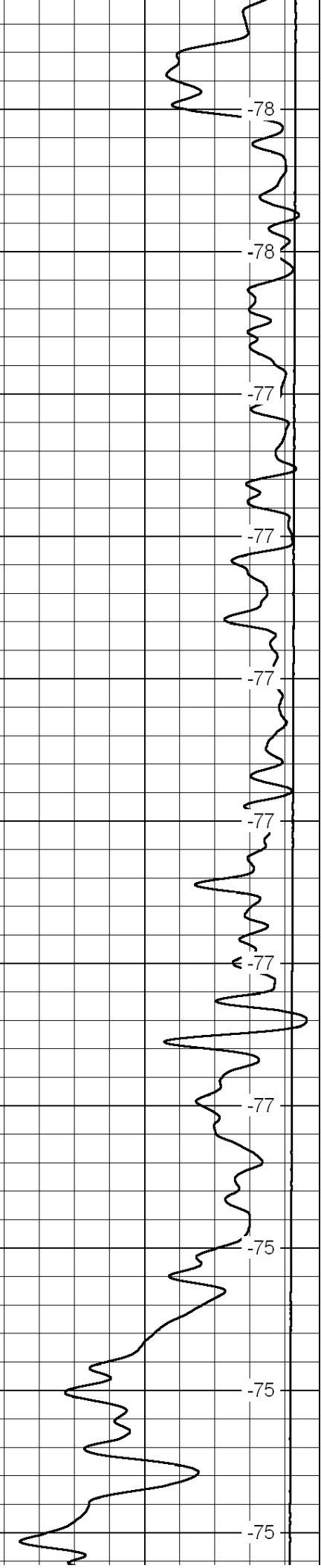
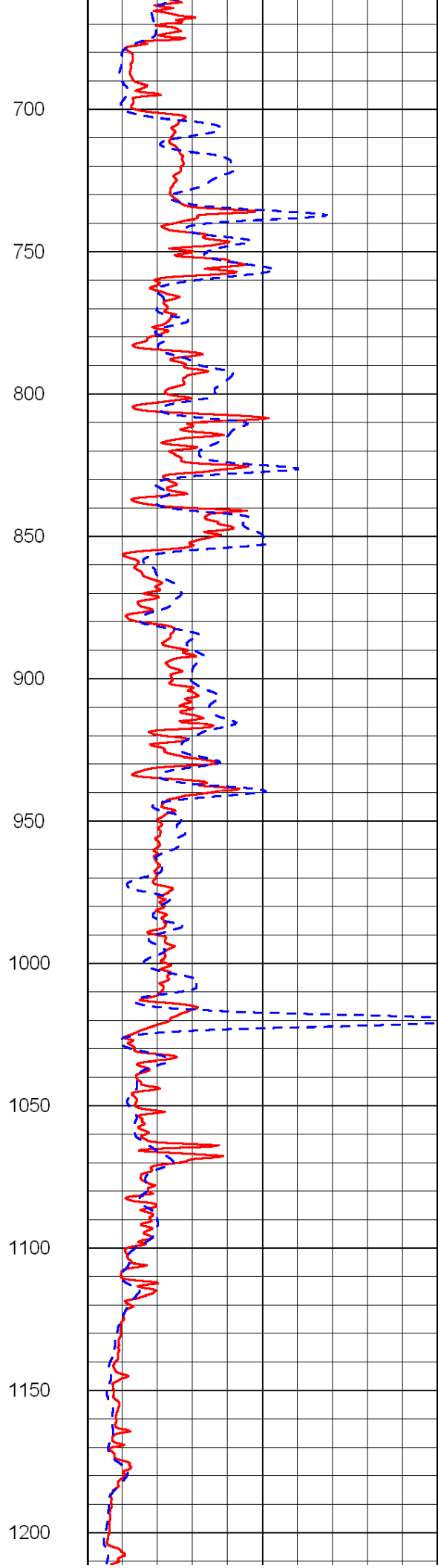
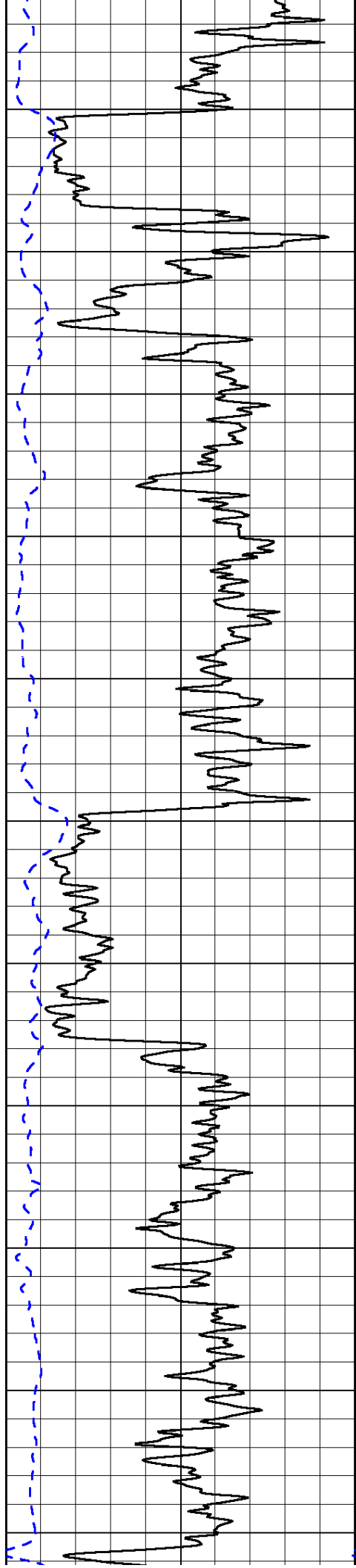
0	Shallow Resistivity	50
0	Deep Resistivity	50

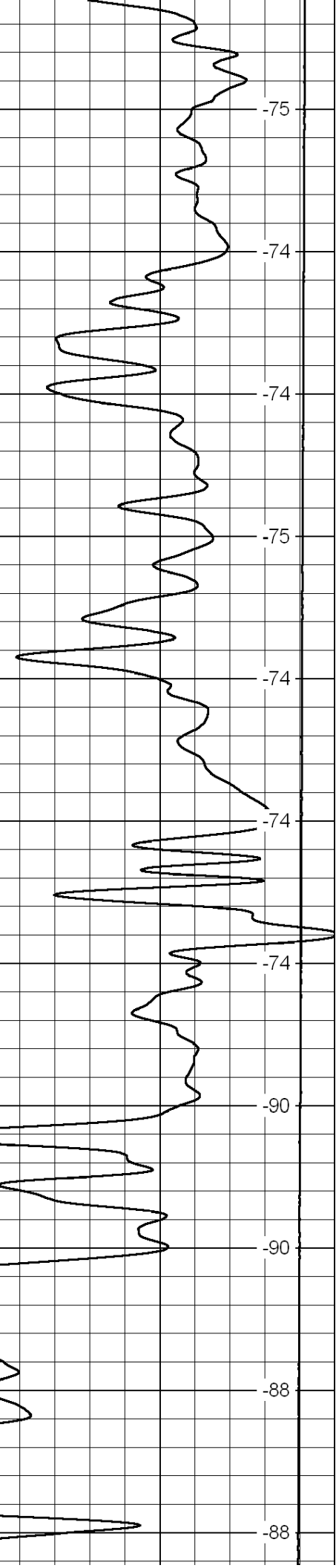
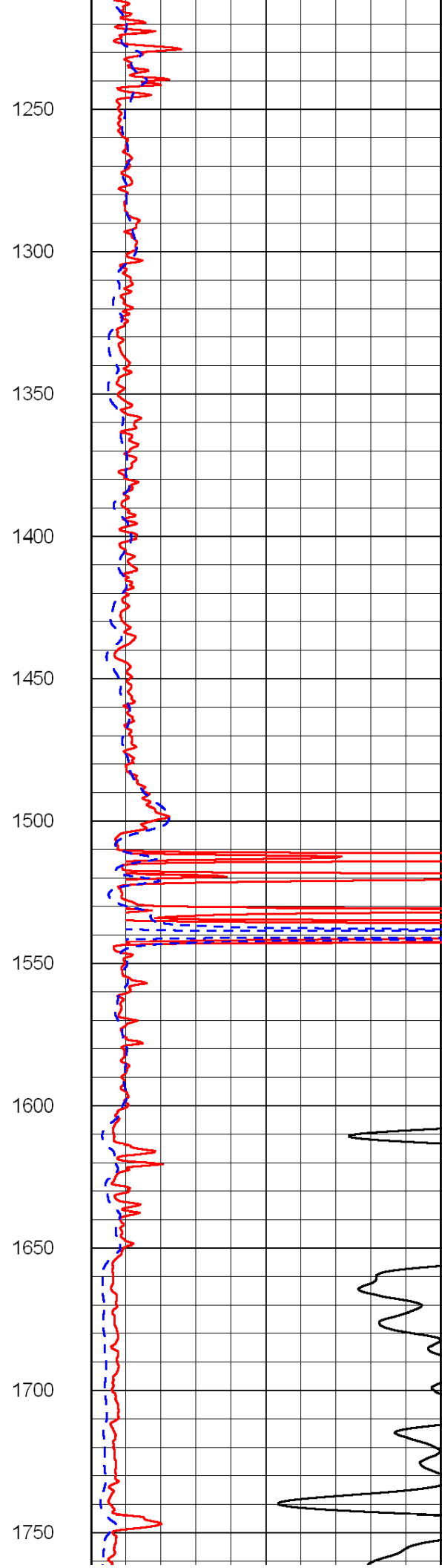
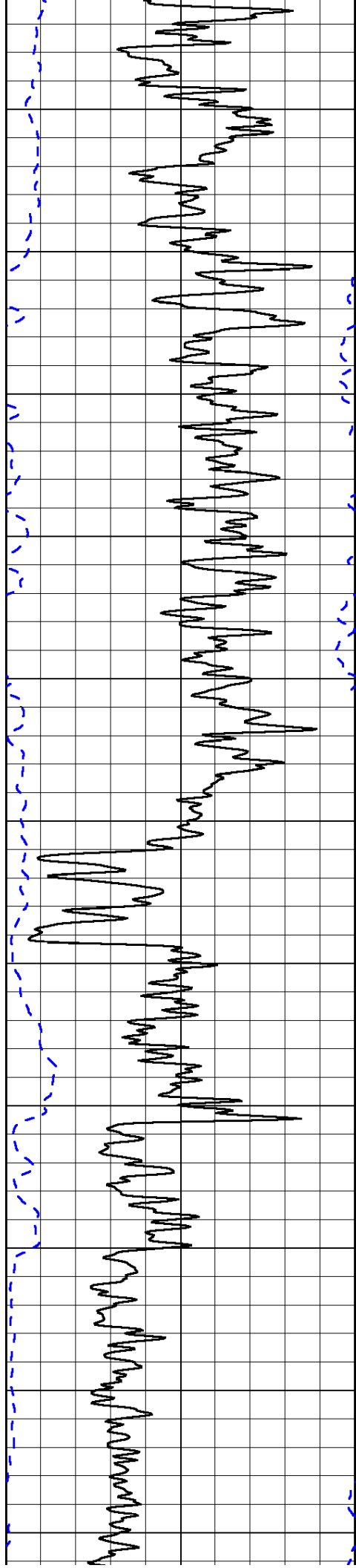
LSPD

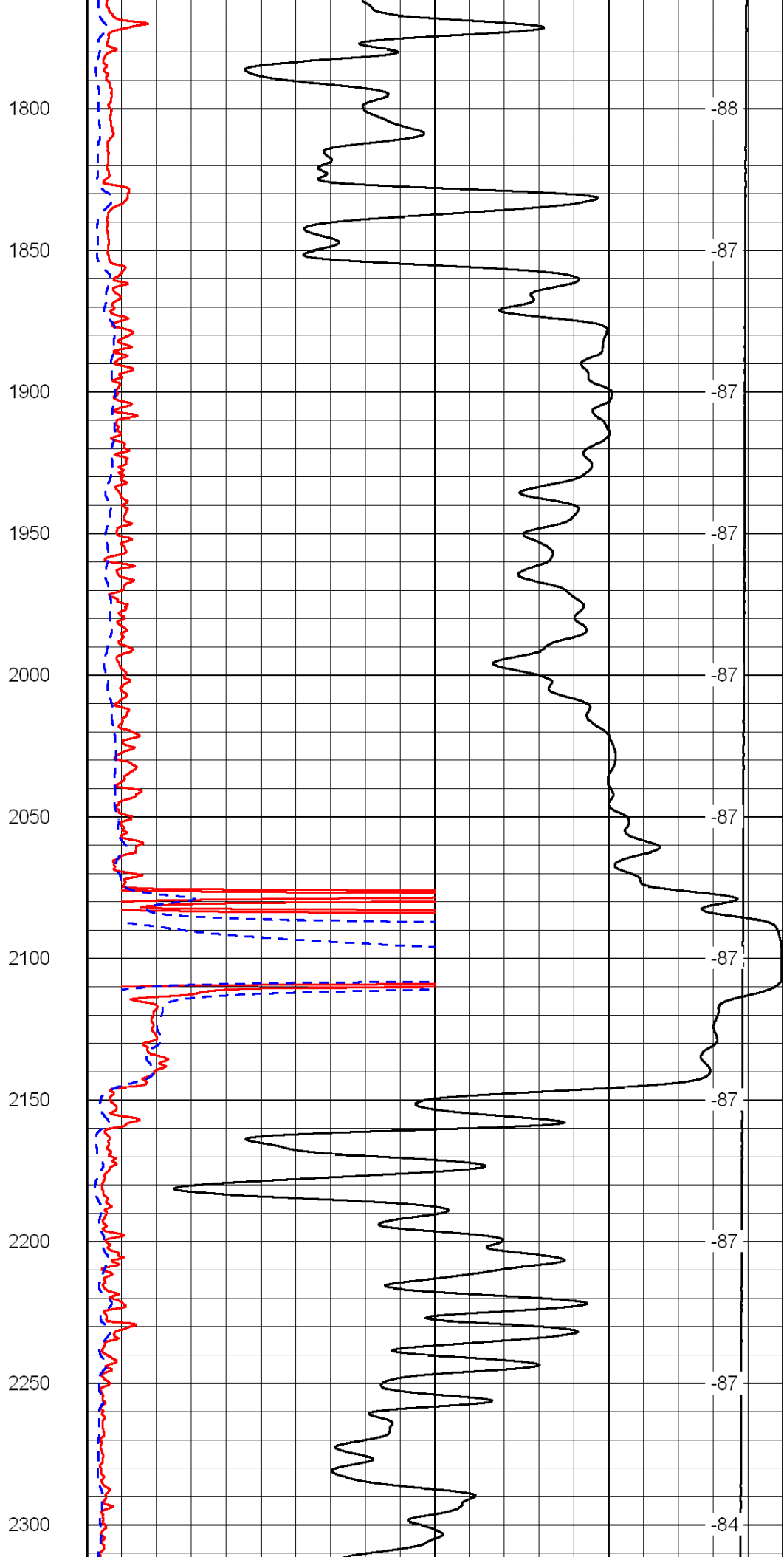
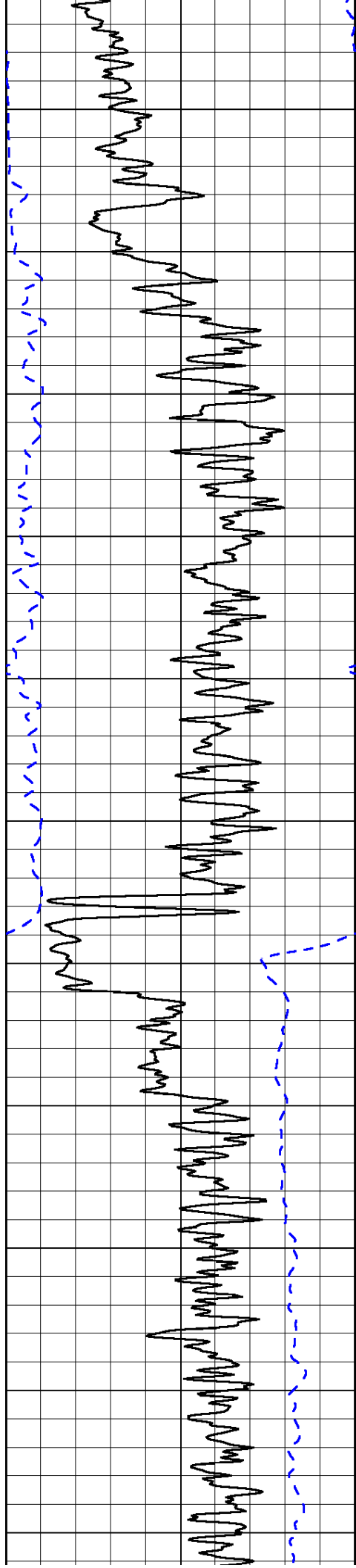
1000	Conductivity	0
15000	Line Tension	0

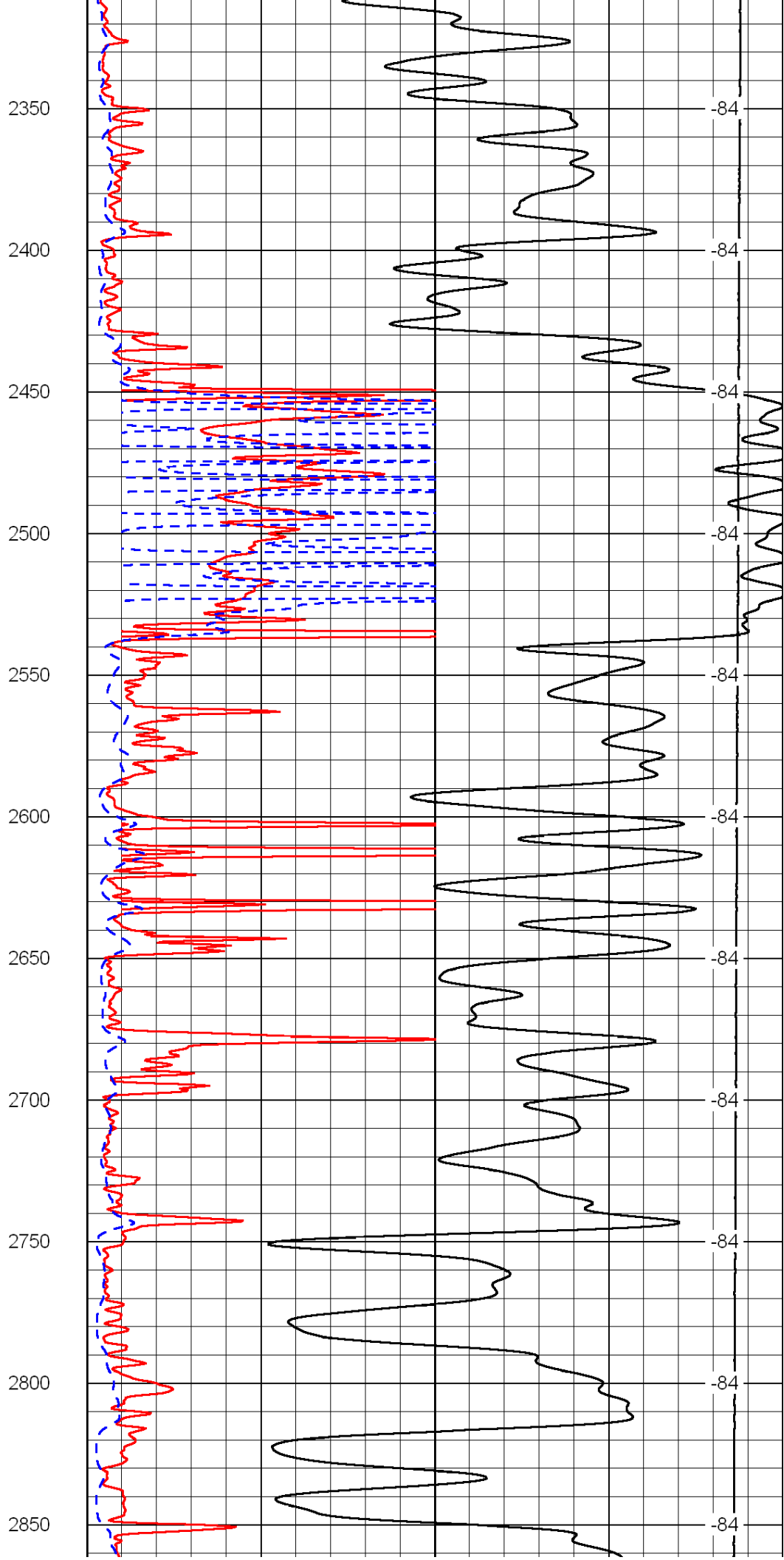
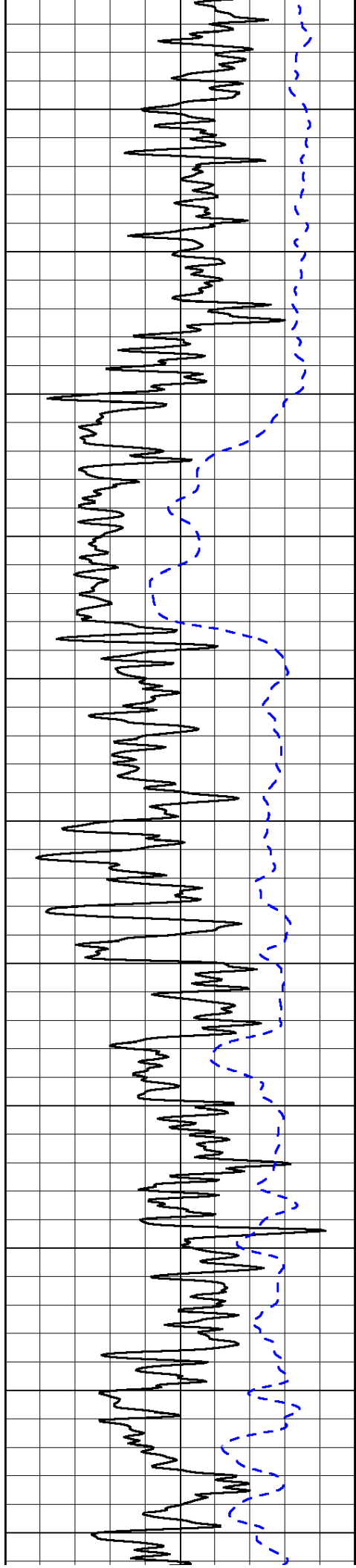
50	Shallow Resistivity	500
50	Deep Resistivity	500

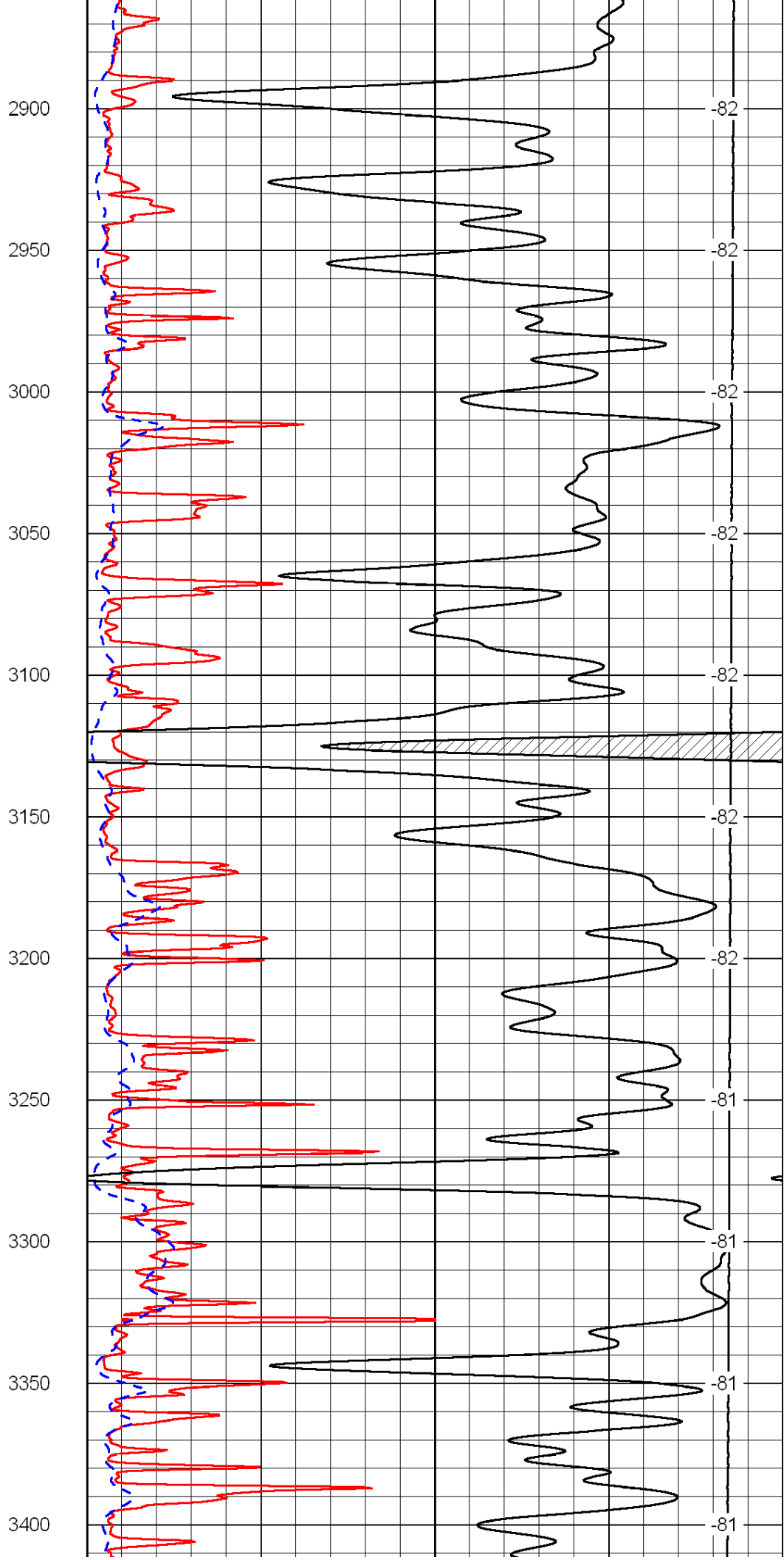
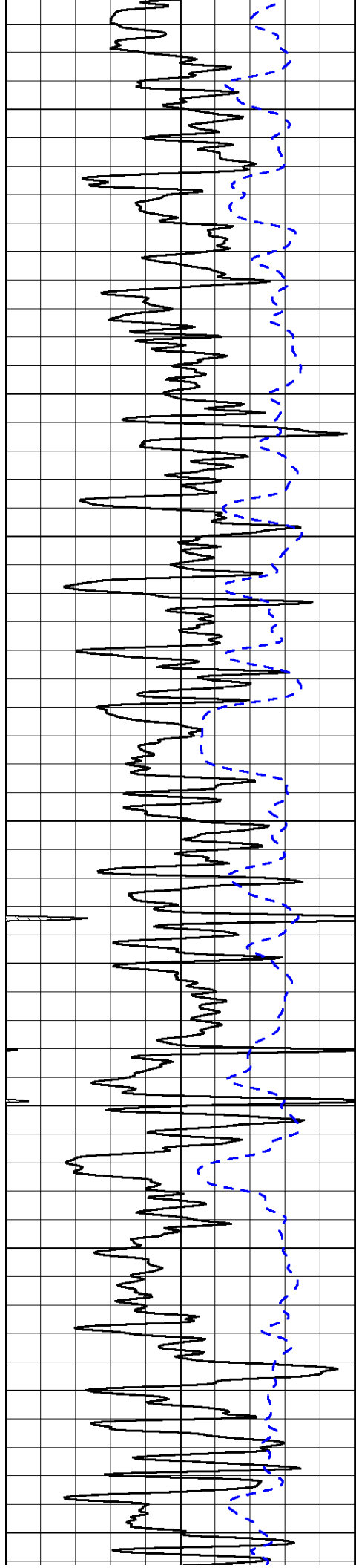


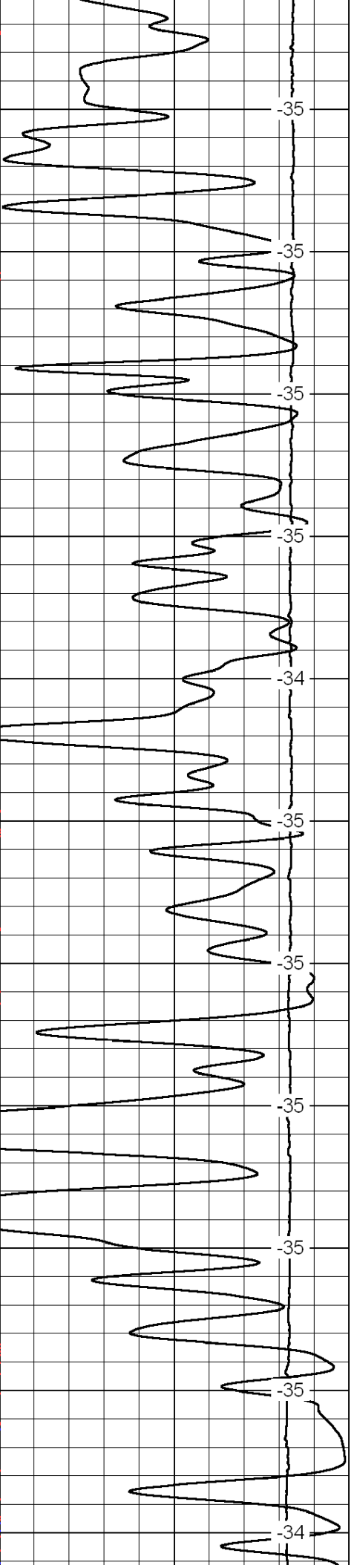
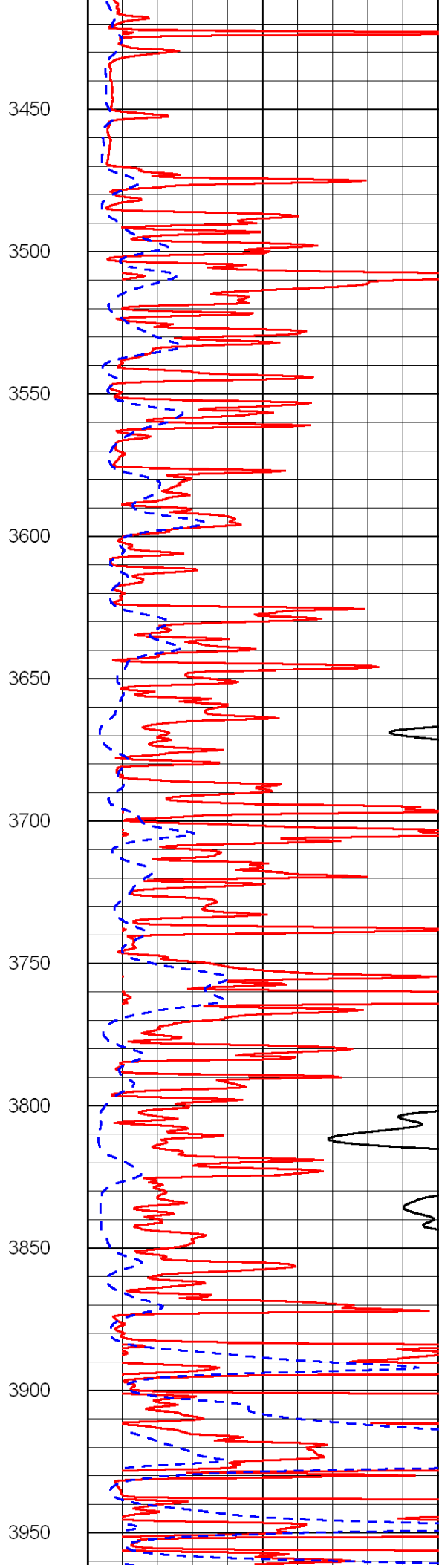
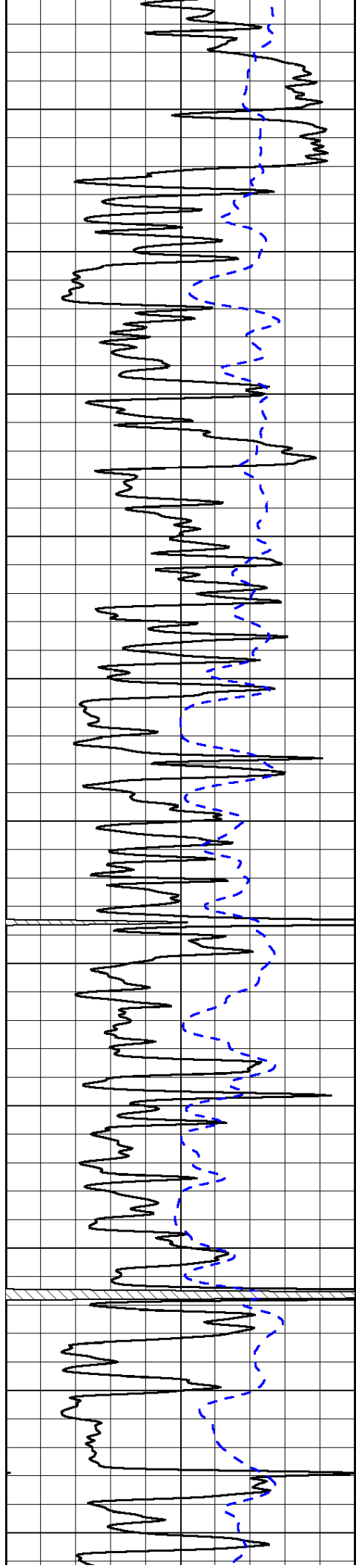


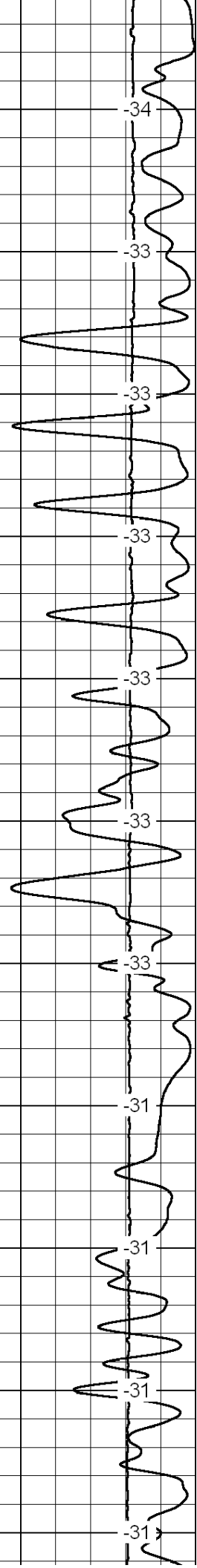
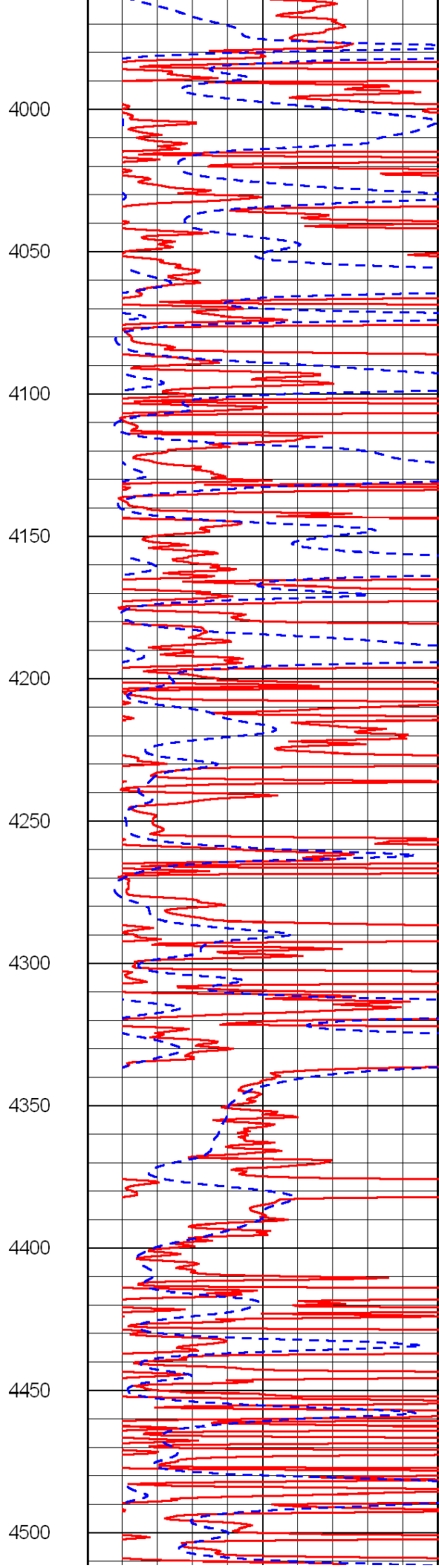
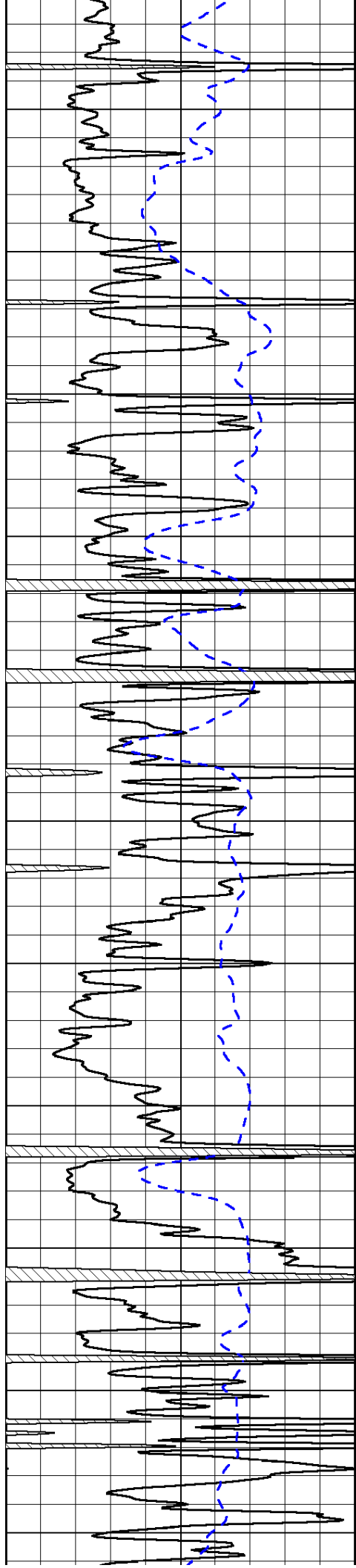






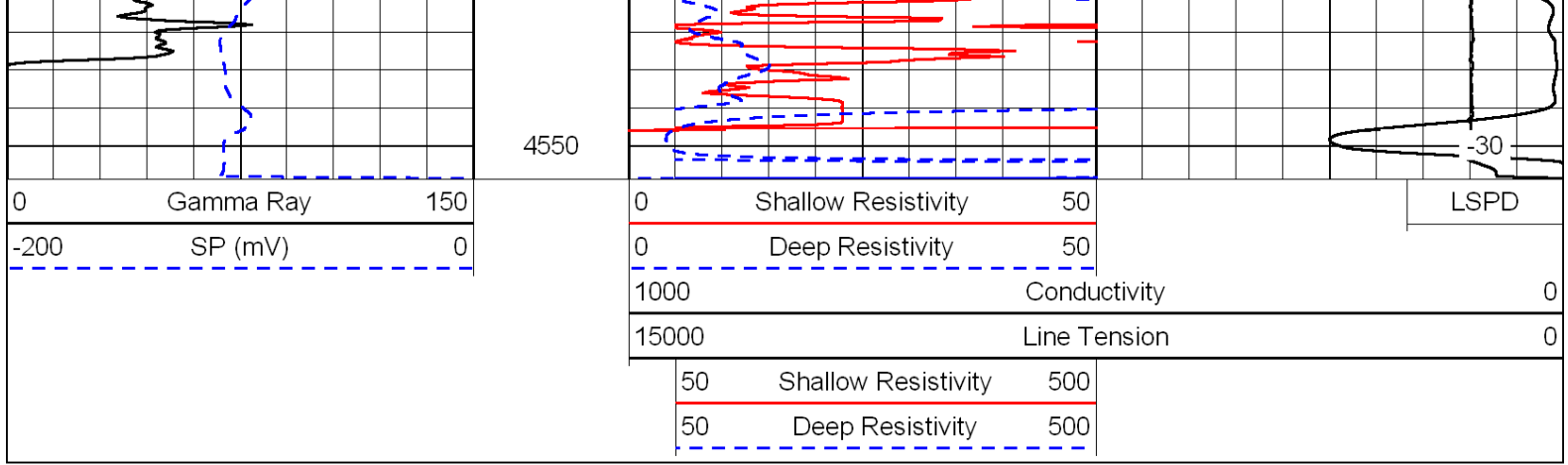




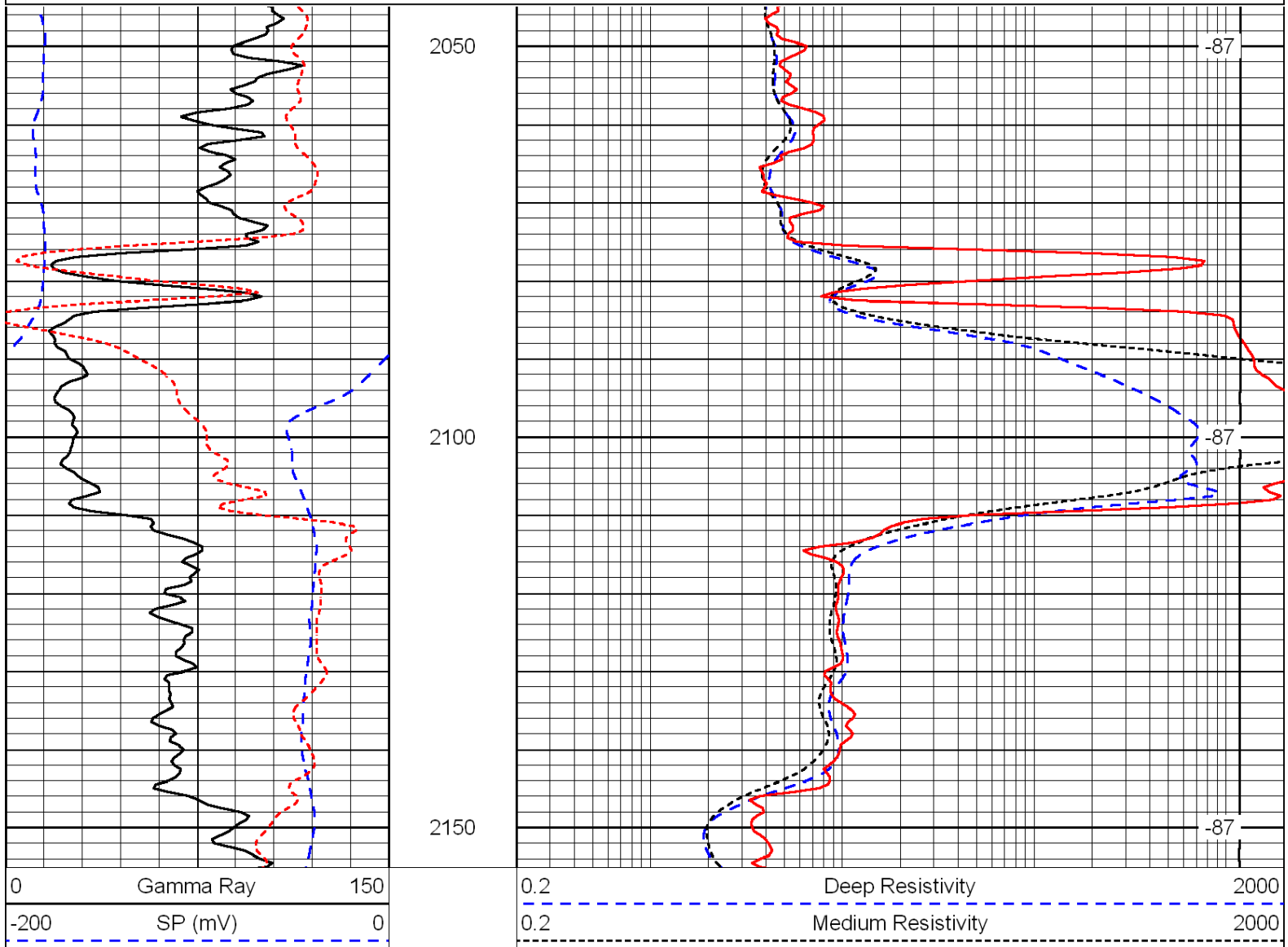
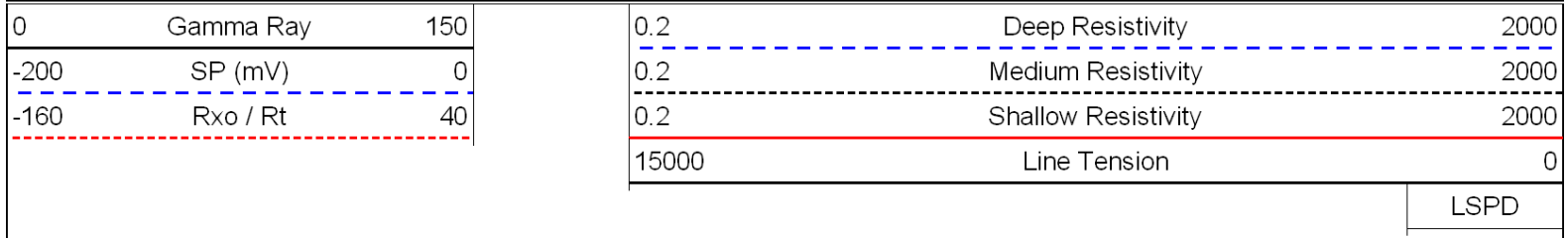


4000  
4050  
4100  
4150  
4200  
4250  
4300  
4350  
4400  
4450  
4500

-34  
-33  
-33  
-33  
-33  
-33  
-33  
-31  
-31  
-31



Database File: c:\warrior\data\flatirons\_lawrence no. 32-23\flatirons.db  
 Dataset Pathname: dil/flatstck  
 Presentation Format: dil  
 Dataset Creation: Wed Jun 02 09:26:50 2010  
 Charted by: Depth in Feet scaled 1:240



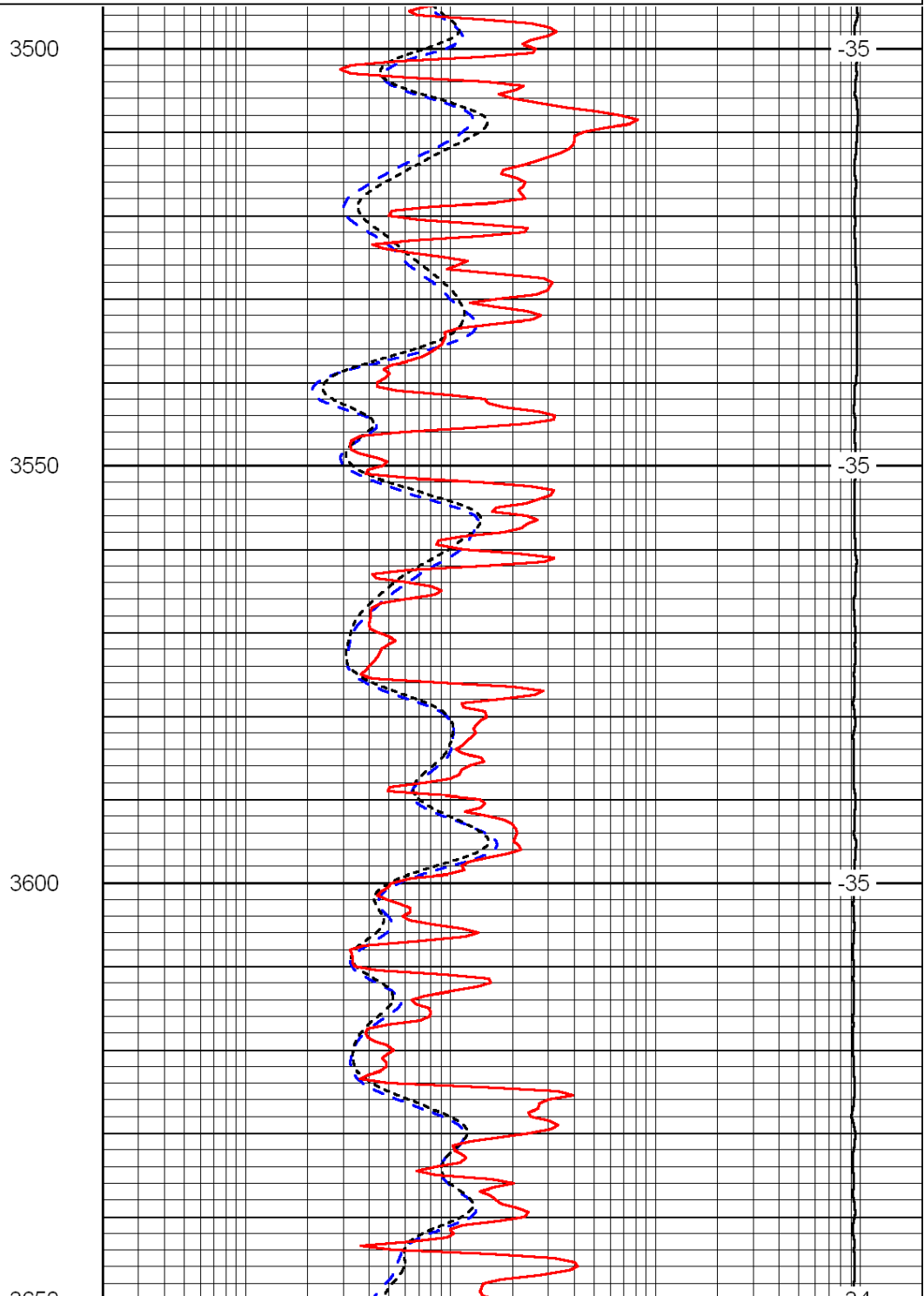
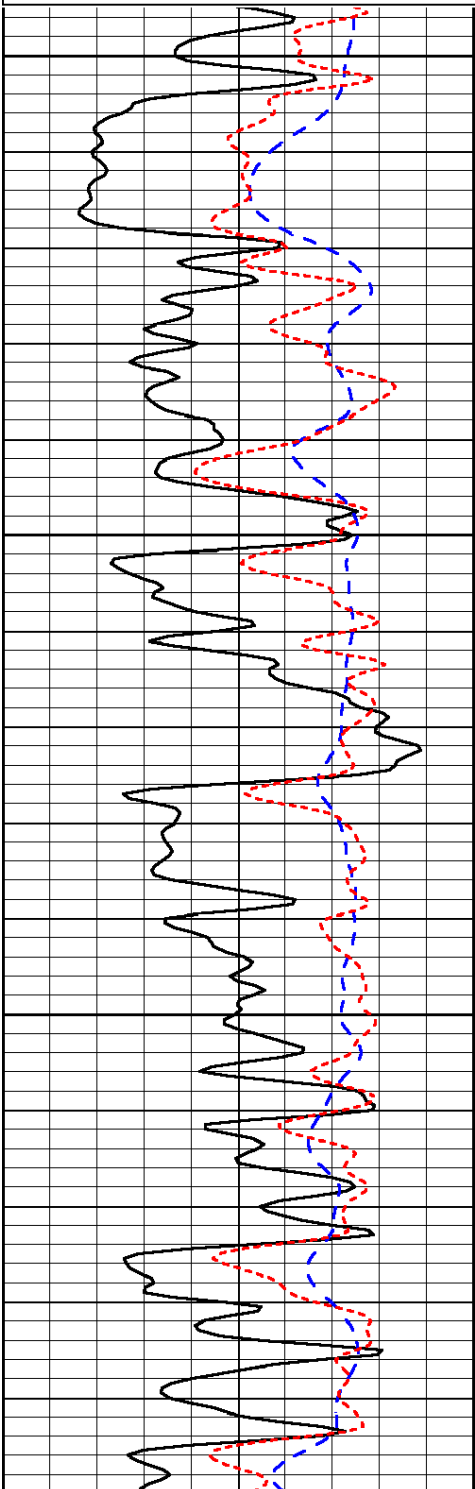
-160	Rxo / Rt	40
------	----------	----

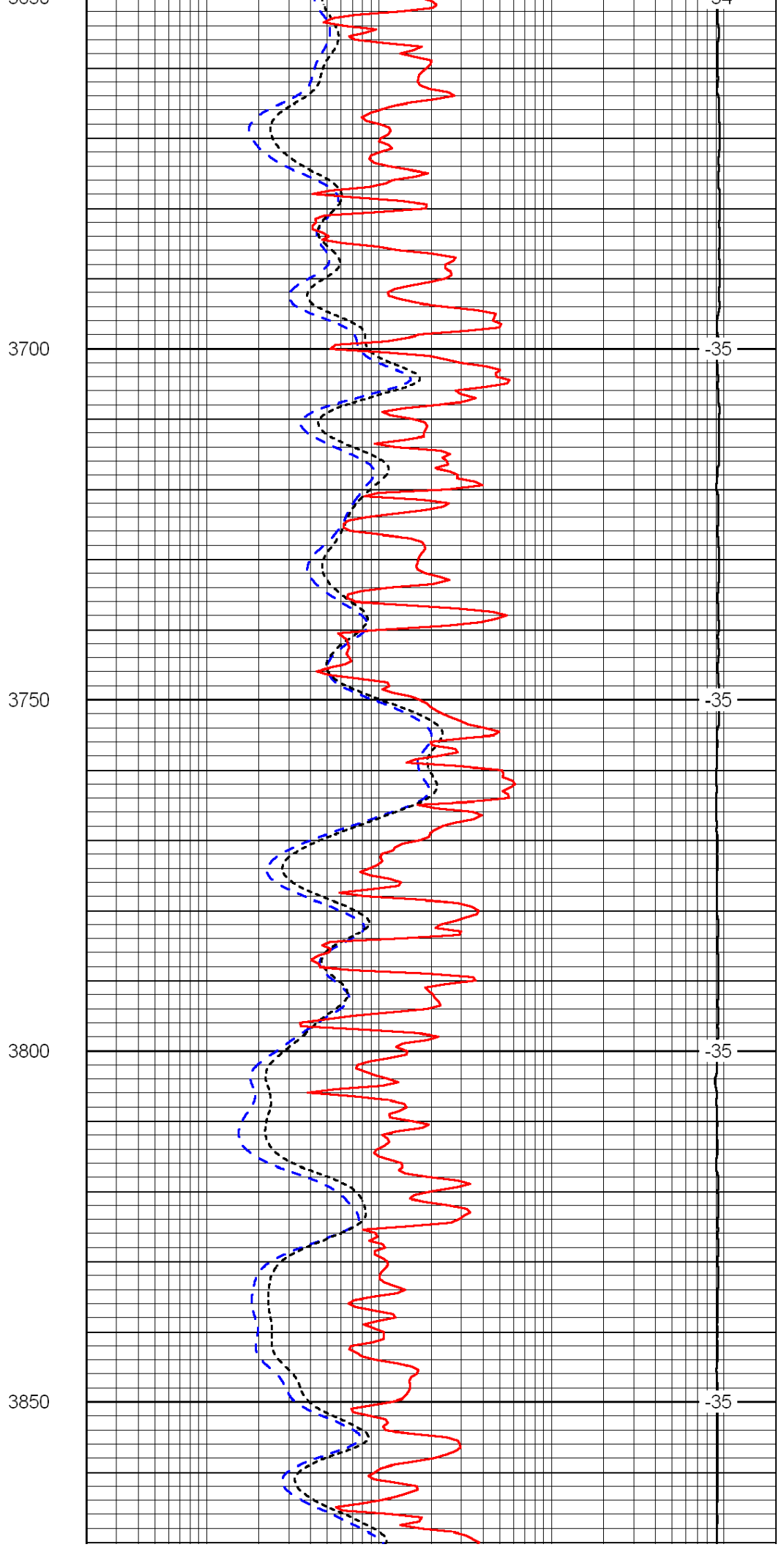
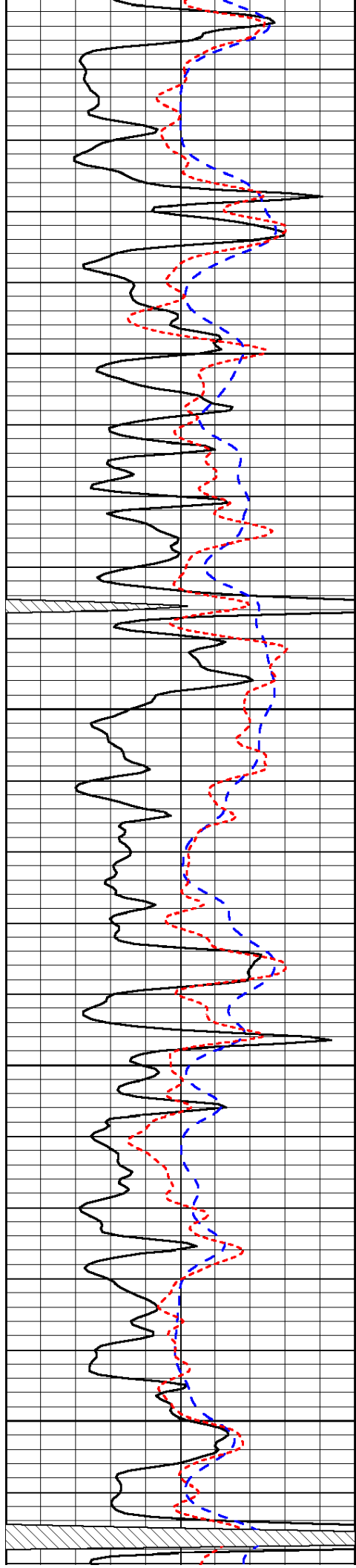
0.2	Shallow Resistivity	2000
15000	Line Tension	0
		LSPD

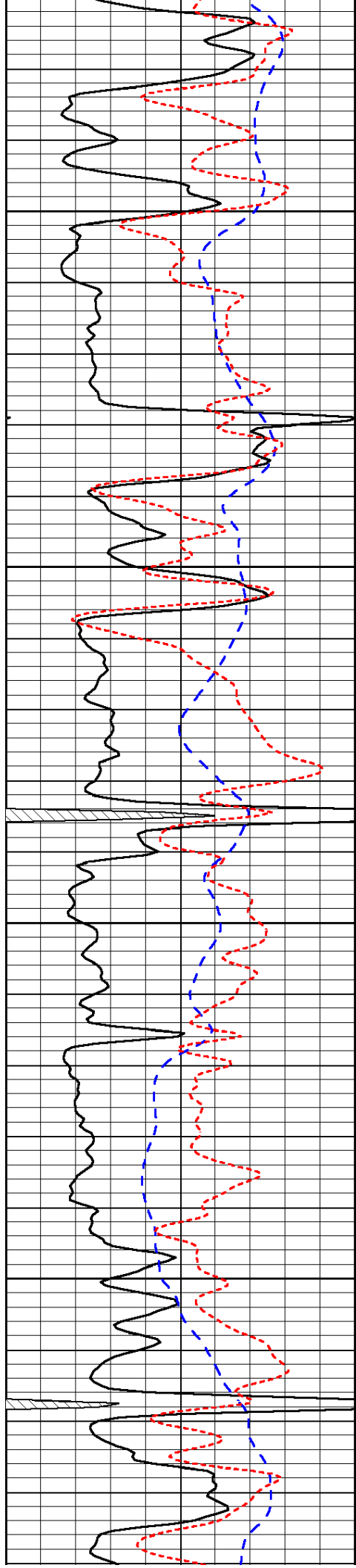
Database File: c:\warrior\data\flatirons\_lawrence no. 32-23\flatirons.db  
 Dataset Pathname: dil\flatstck  
 Presentation Format: dil  
 Dataset Creation: Wed Jun 02 09:26:50 2010  
 Charted by: Depth in Feet scaled 1:240

0	Gamma Ray	150
-200	SP (mV)	0
-160	Rxo / Rt	40

0.2	Deep Resistivity	2000
0.2	Medium Resistivity	2000
0.2	Shallow Resistivity	2000
15000	Line Tension	0
		LSPD





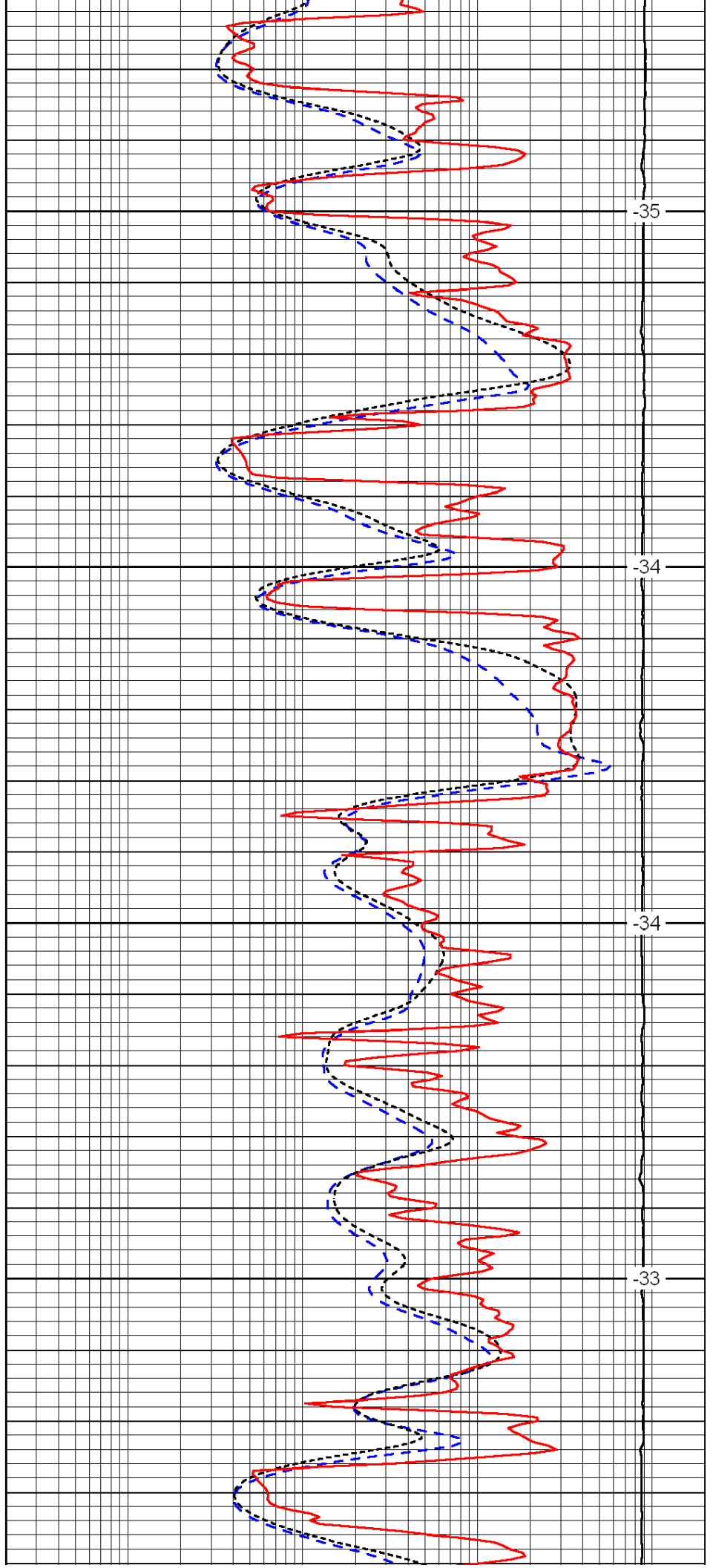


3900

3950

4000

4050

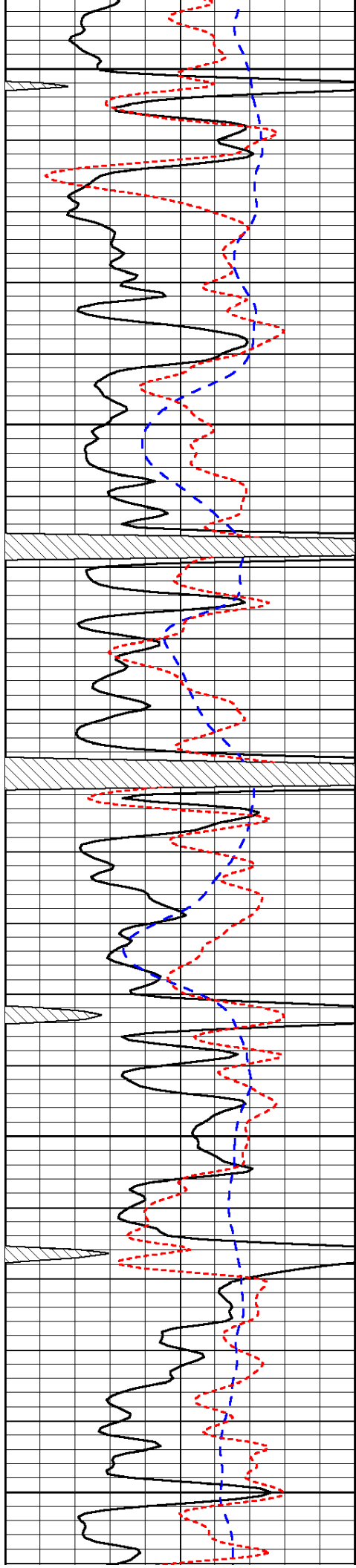


-35

-34

-34

-33



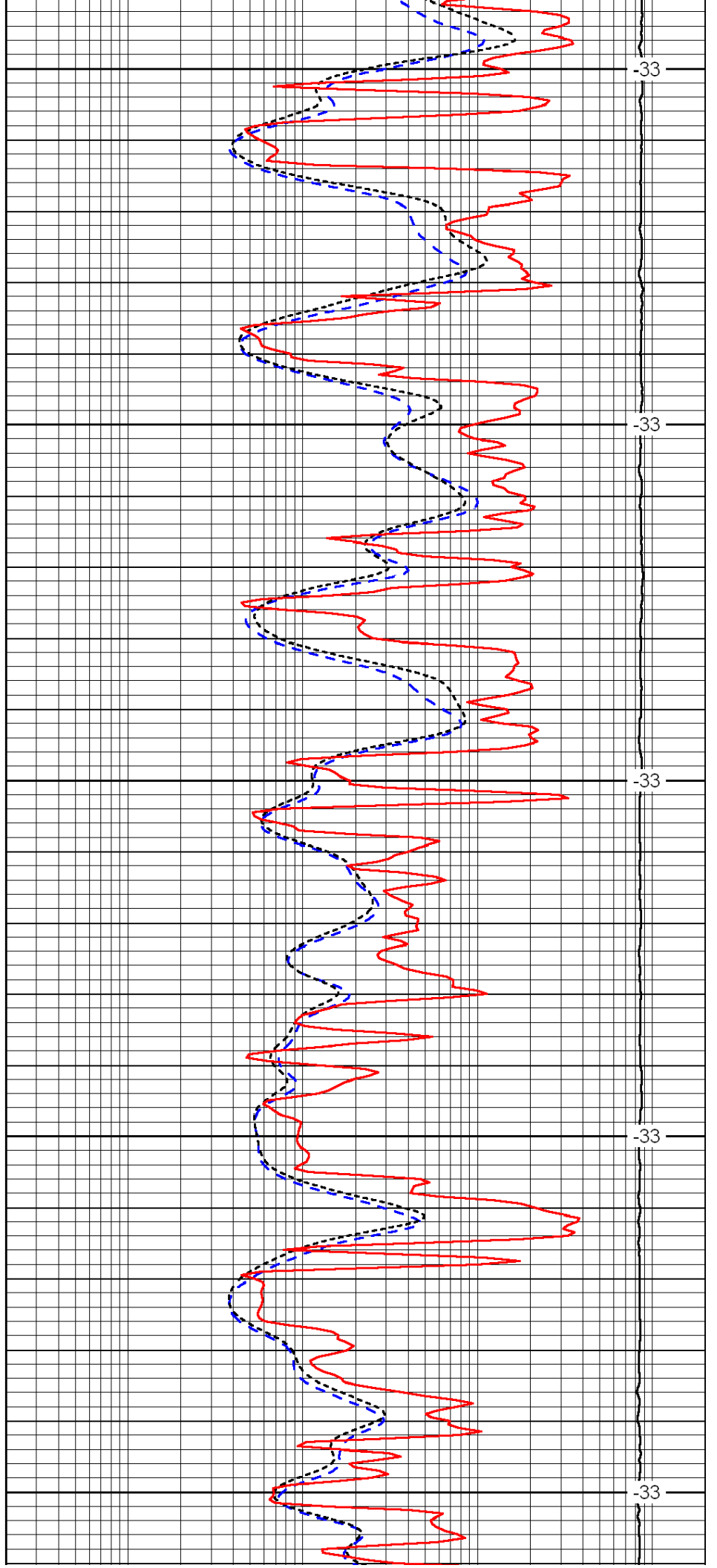
4100

4150

4200

4250

4300



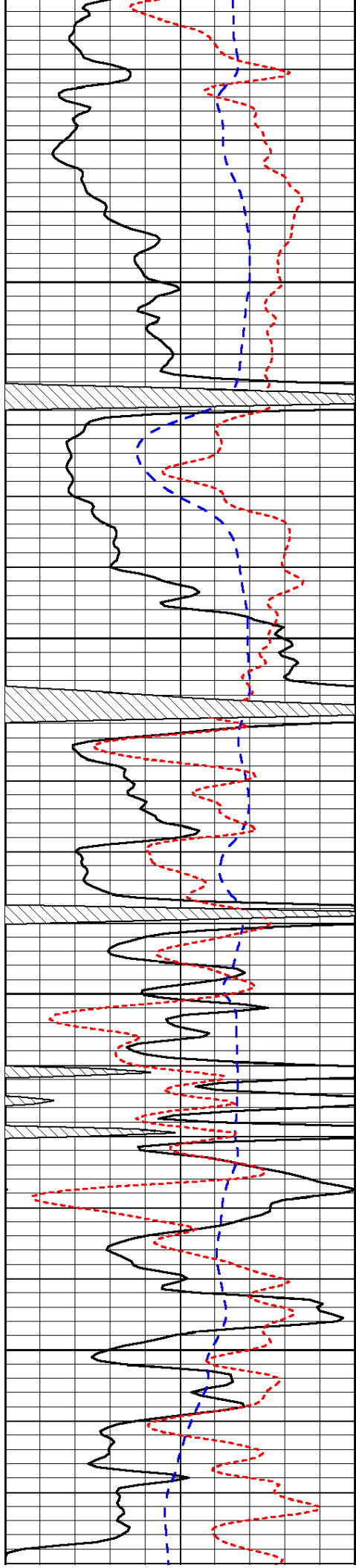
-33

-33

-33

-33

-33

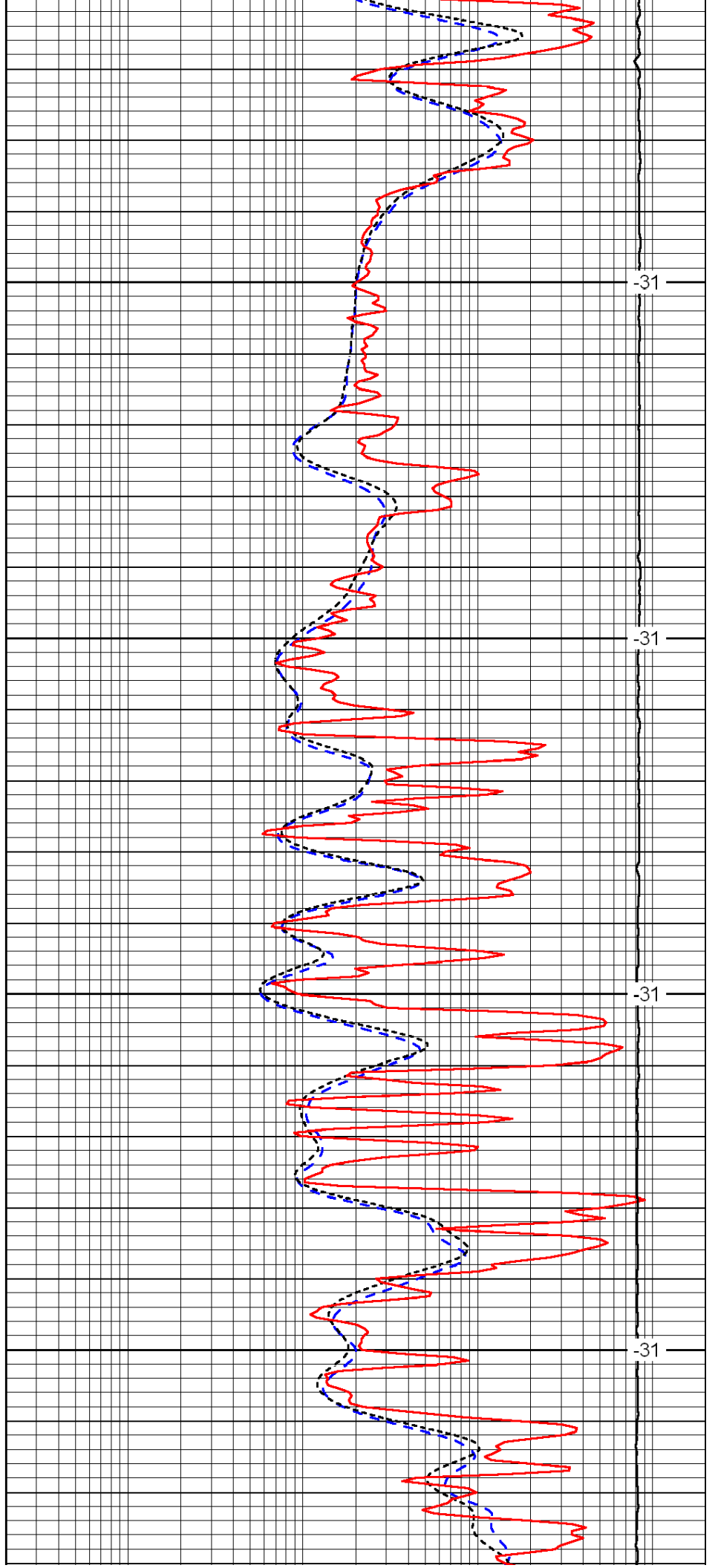


4350

4400

4450

4500

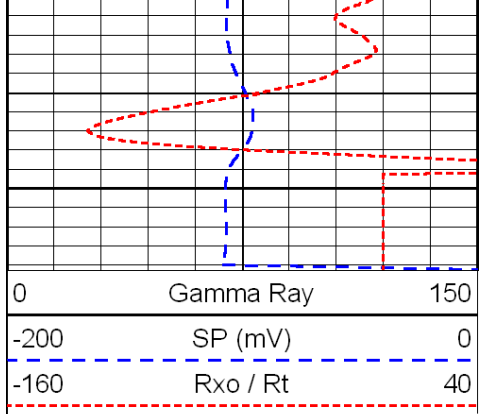


-31

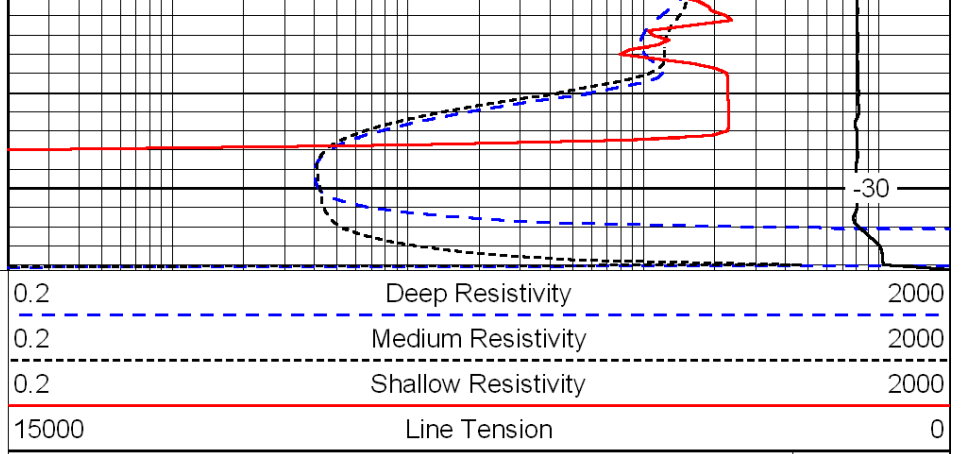
-31

-31

-31



4550



LSPD