



**Borehole Compensated
Sonic Log**

DIGITAL LOG (785) 625-3858

API No. 15-101-22,232-00-00	Company Flatirons Resources L.L.C.	Location 1085' FNL & 1300' FWL	Other Services DIL/MEL CNL/CDL
Well Church Lawrence Unit No. 11-14	State Kansas		
Field Northwest	County Lane	Sec: 14	Twp: 16S Rge: 28W
Log Measured From Drilling Measured From	Ground Level Kelly Bushing	Elevation 5 Ft. Above Perm. Datum	K.B. 2633 D.F. G.L. 2628

Date	05/22/2010
Run Number	Two
Type Log	BHC Sonic
Depth Driller	4575
Depth Logger	4574
Bottom Logged Interval	4562
Top Logged Interval	200
Type Fluid In Hole	Chemical
Salinity, PPM CL	3,500
Density	9.2
Level	Full
Max. Rec. Temp. F	124
Operating Rig Time	5 Hours
Equipment -- Location	10 Hays
Recorded By	Jason Wellbrock
Witnessed By	Clayton Erickson

Borehole Record				Casing Record			
Run No	Bit	From	To	Size	Wgt.	From	To
One	12.25	0	217	8.625	24#	0	217
Two	7.875	217	TD				

<<< Fold Here >>>

All interpretations are opinions based on inferences from electrical or other measurements and we cannot and do not guarantee the accuracy or correctness of any interpretation, and we shall not, except in the case of gross or willful negligence on our part, be liable or responsible for any loss, costs, damages, or expenses incurred or sustained by anyone resulting from any interpretation made by any of our officers, agents or employees. These interpretations are also subject to our general terms and conditions set out in our current Price Schedule.

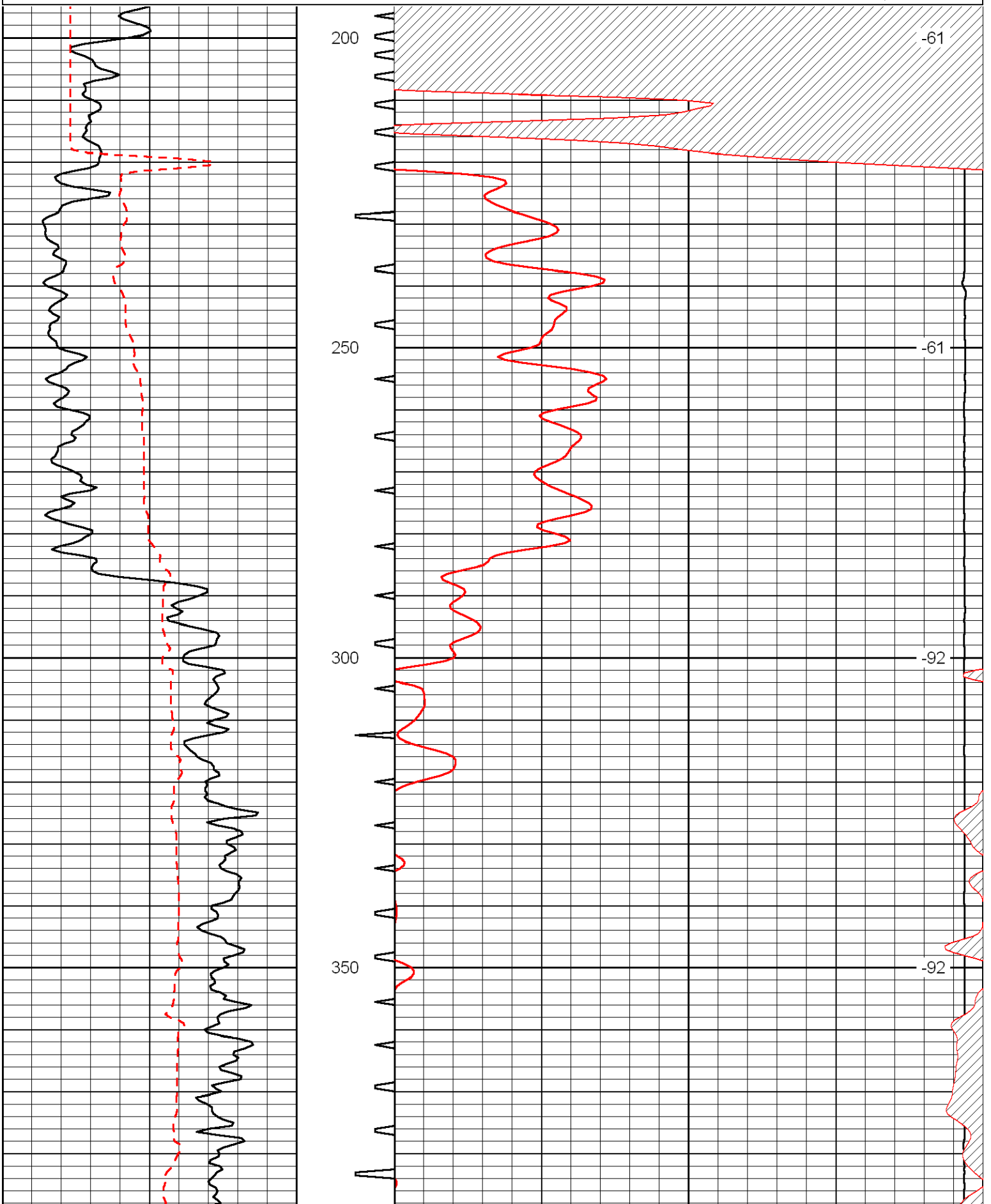
Comments

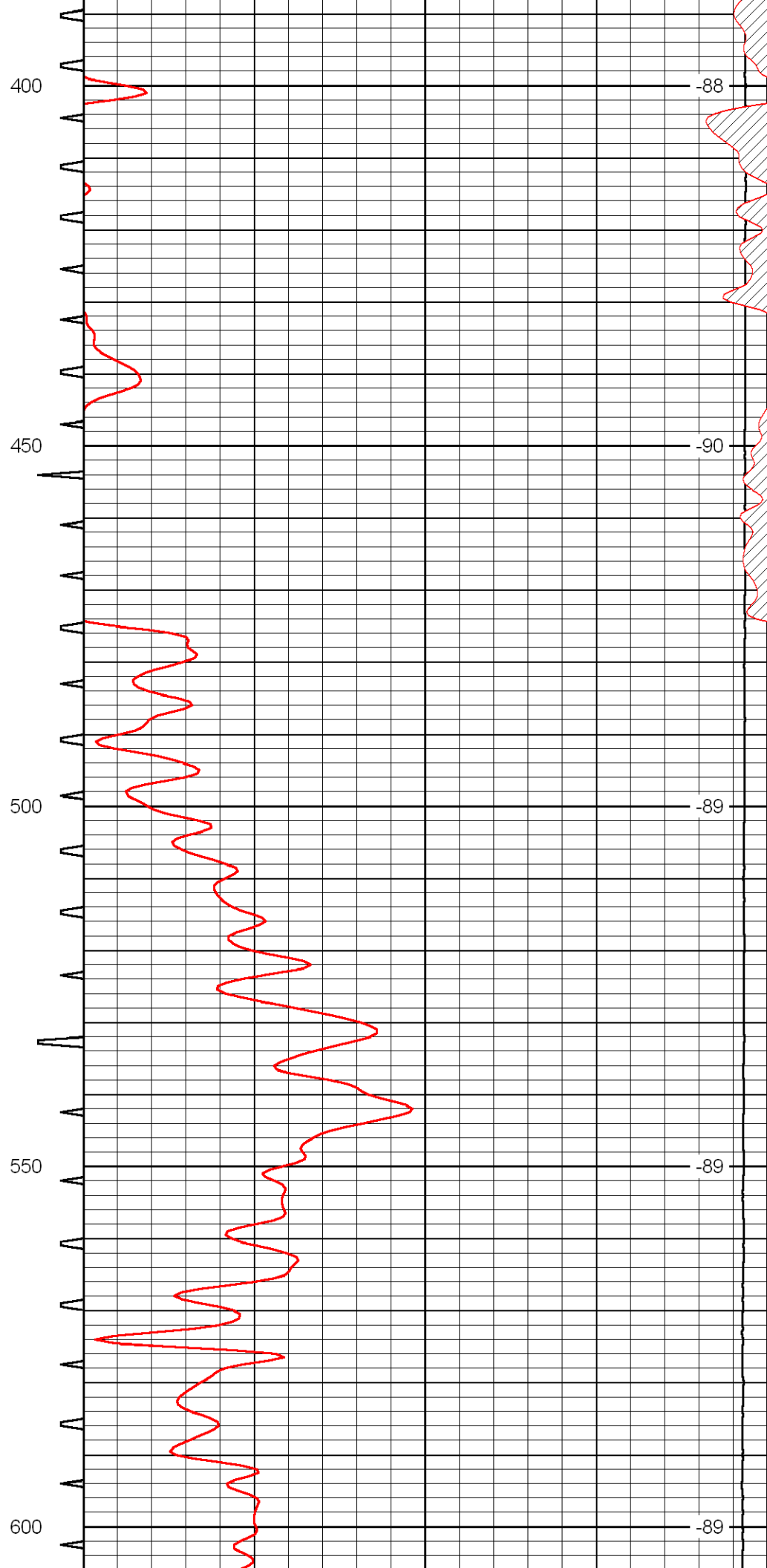
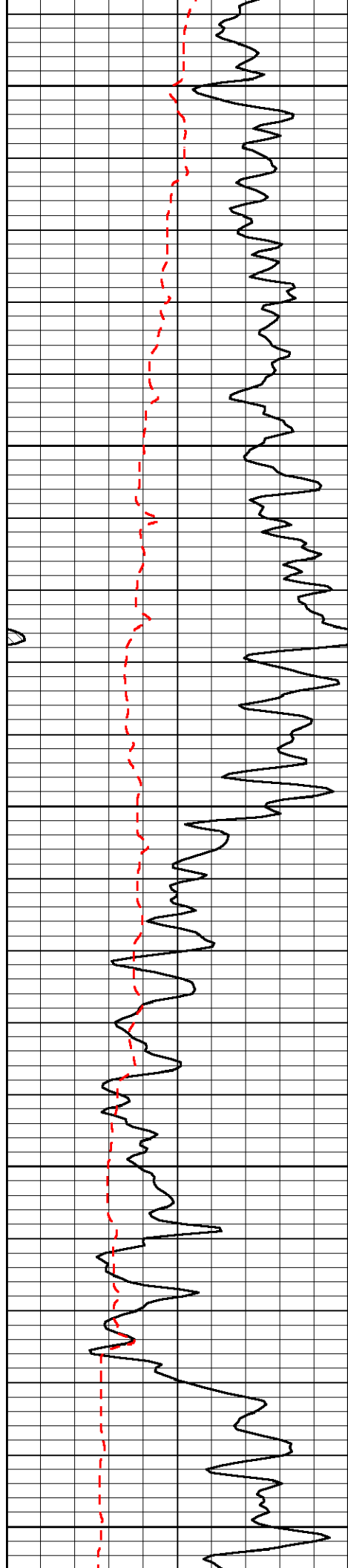
Thank you for using Log-Tech, Inc.
(785) 625-3858

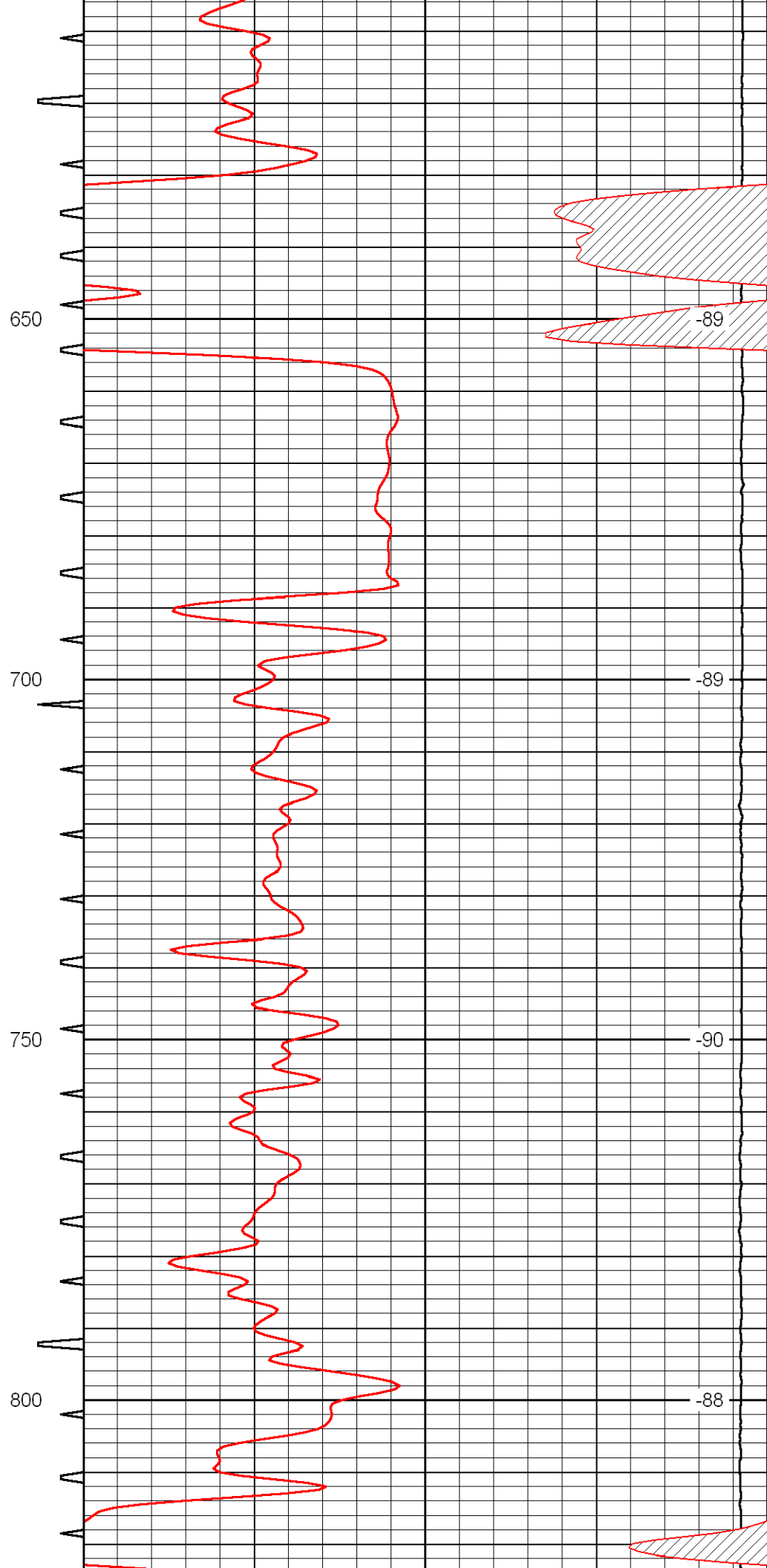
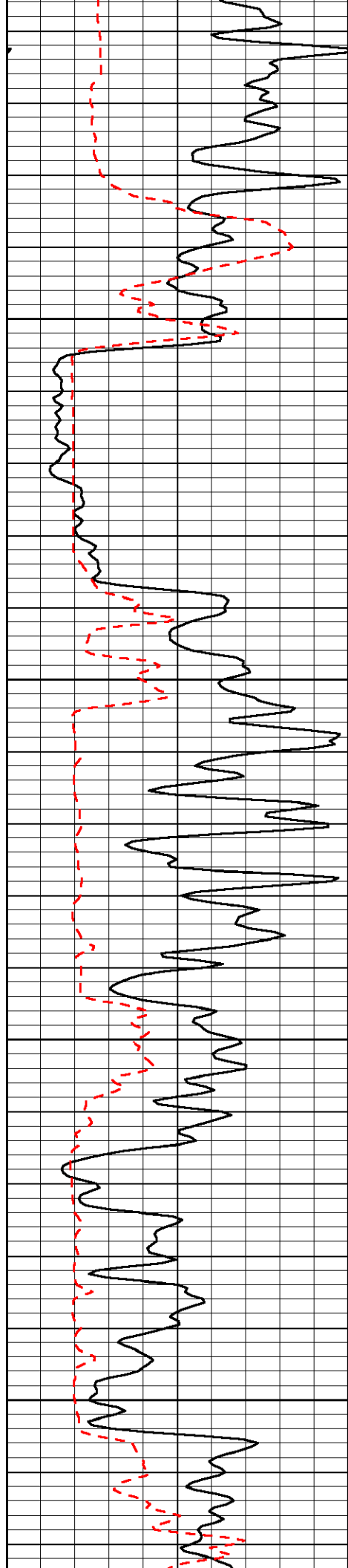
Shields 4E, 1 1/2 N, W Into

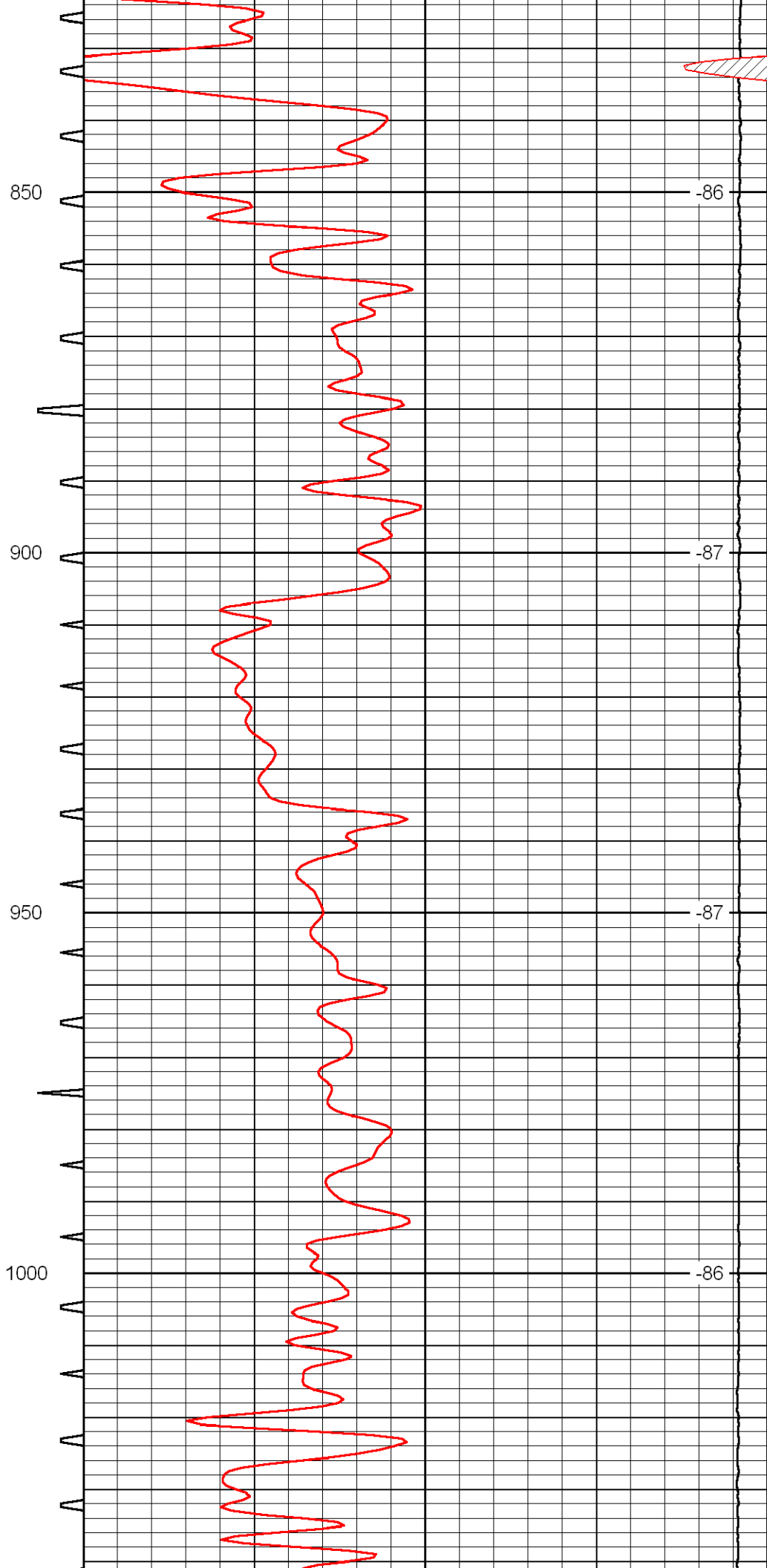
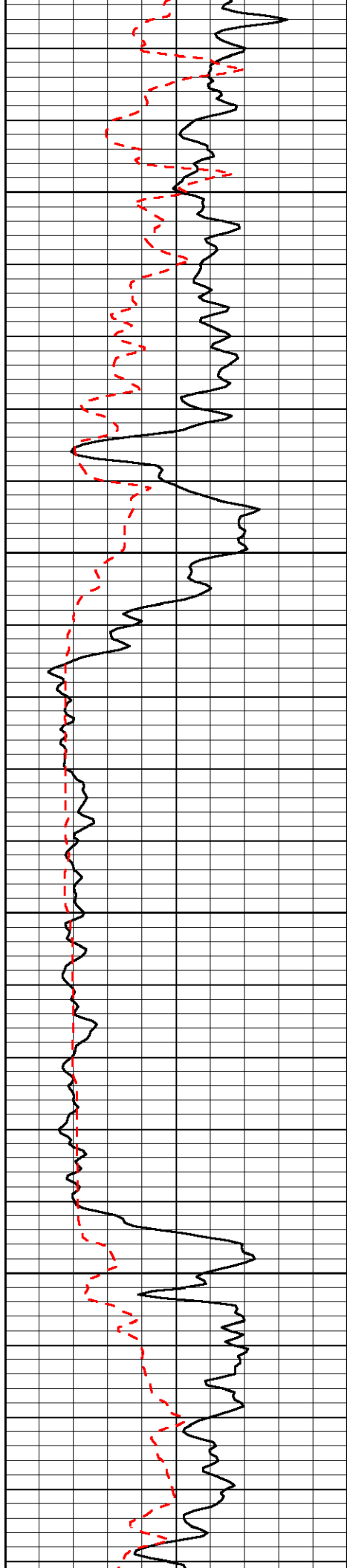
Database File:	flathd.db
Dataset Pathname:	dil/flat2in
Presentation Format:	sonic
Dataset Creation:	Sat May 22 11:03:20 2010
Charted by:	Depth in Feet scaled 1:240

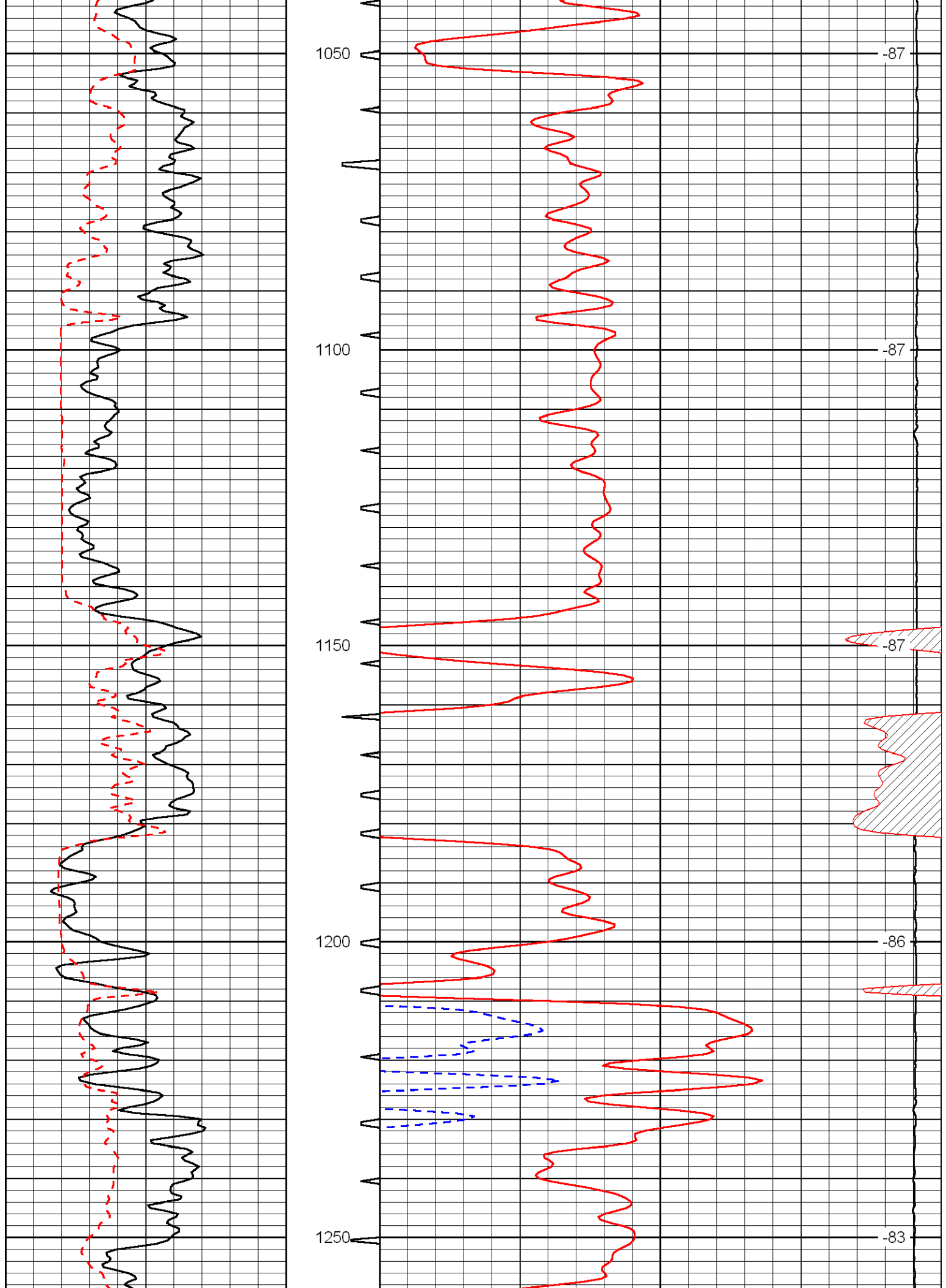
0	Gamma Ray	150	Sonic Int (m/sec)	140	Delta Time (usec/ft) (usec/ft)	40	
150	Gamma Ray	300		30	Sonic Porosity (pu)	-10	
6	dCAL (GAPI)	16	5	0	15000	LTEN (lb) (lb)	0
						LSPD (ft/min)	

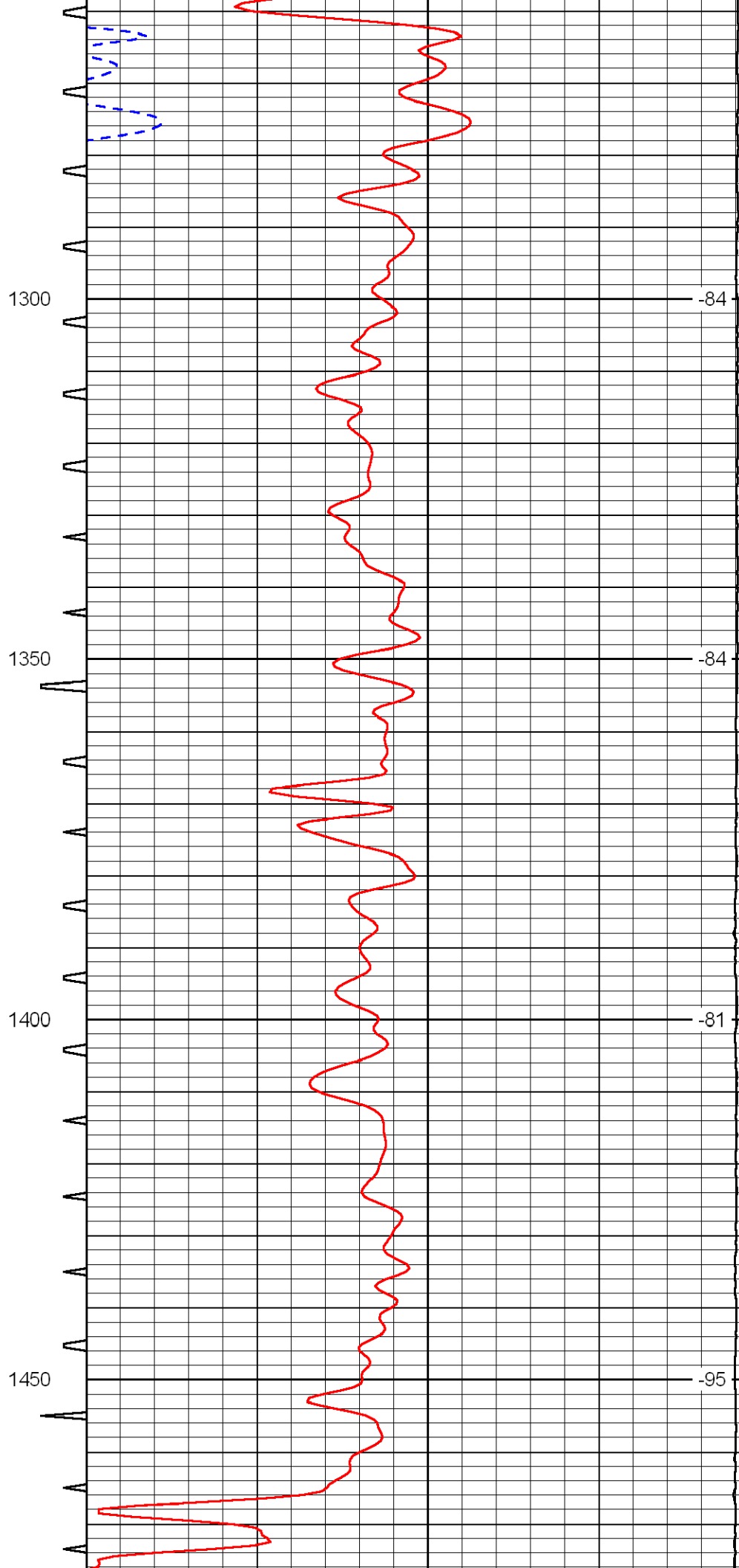
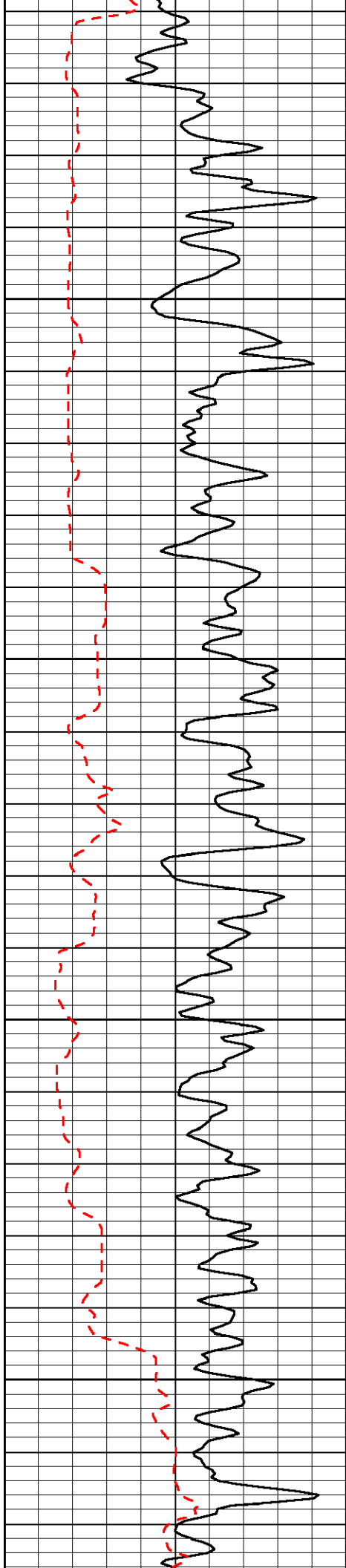


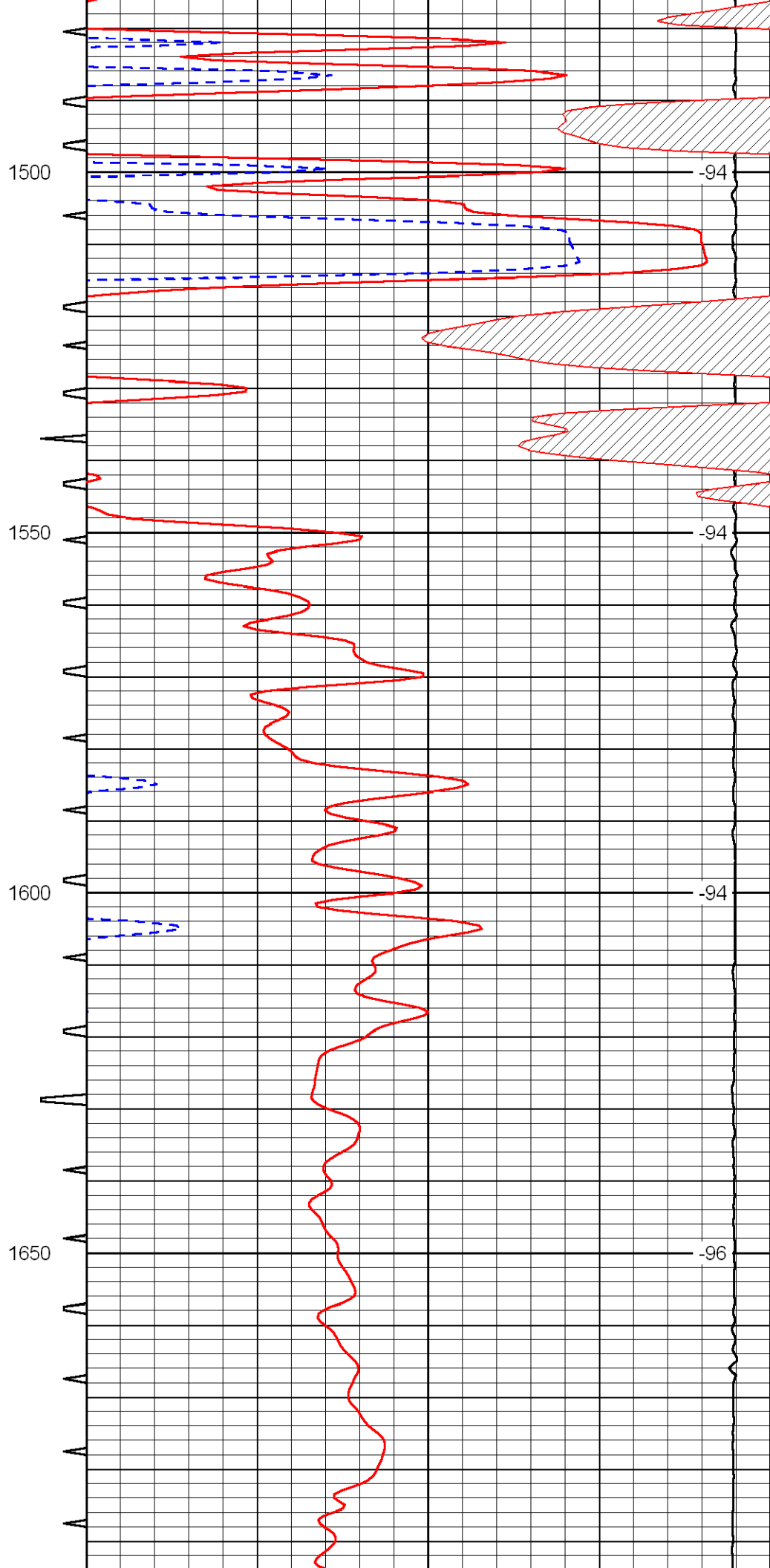
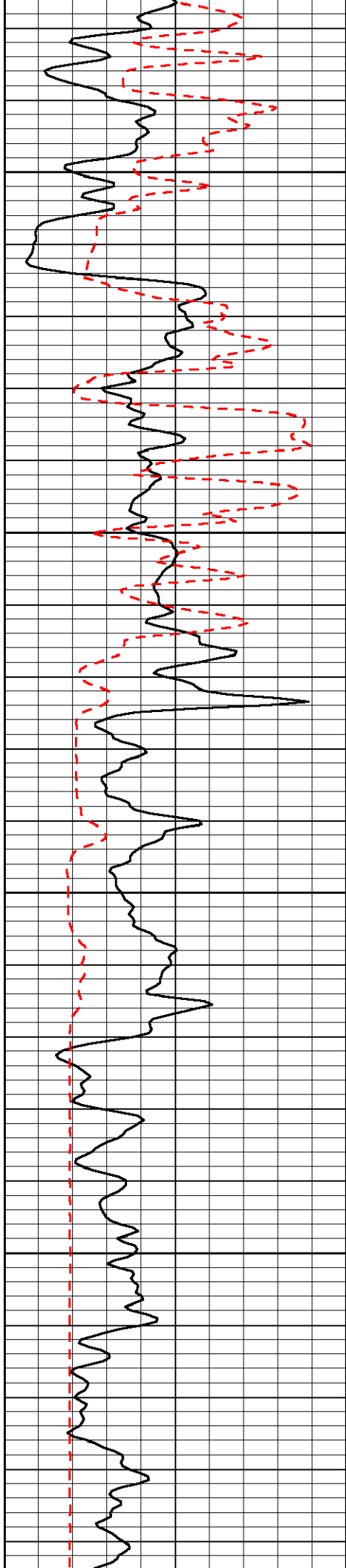


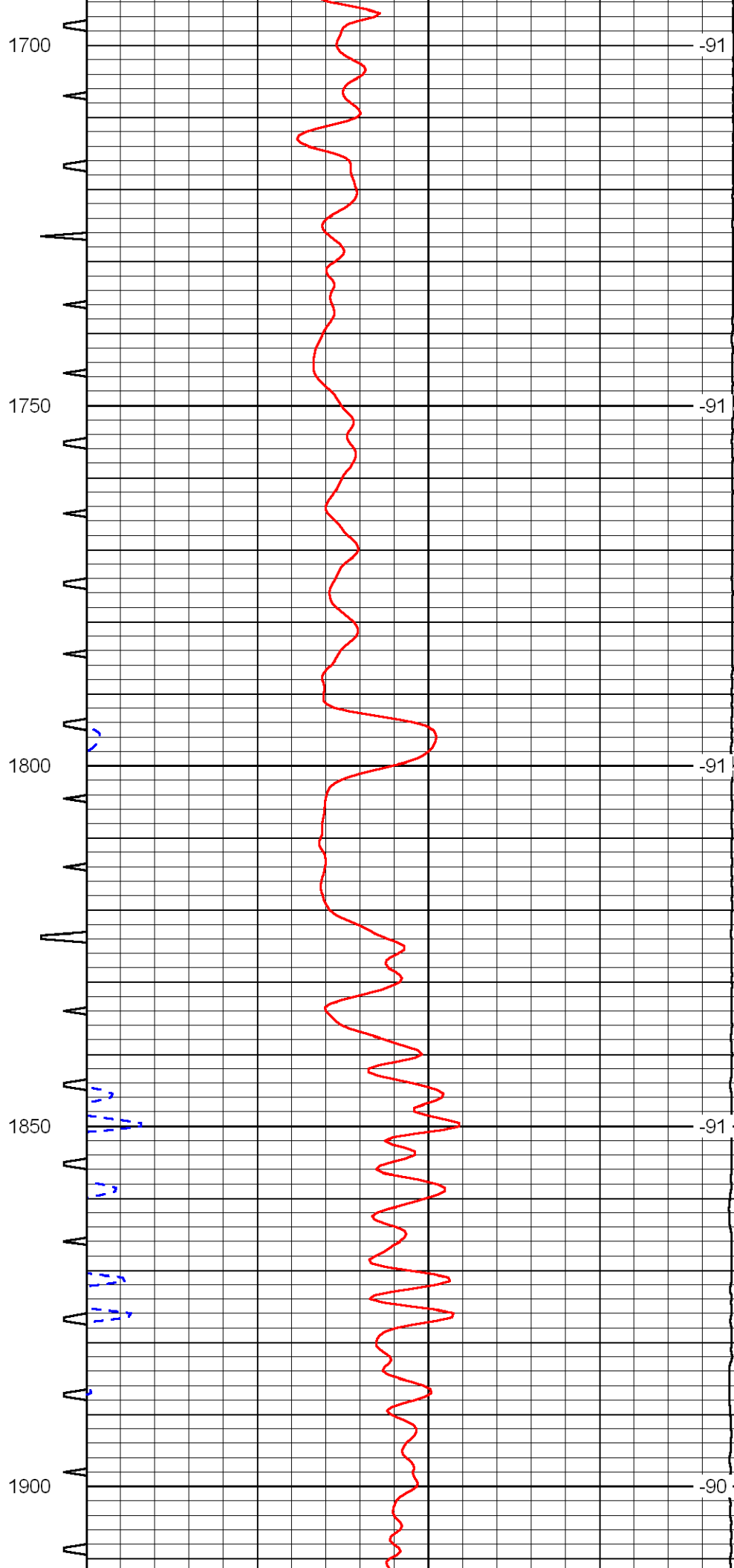
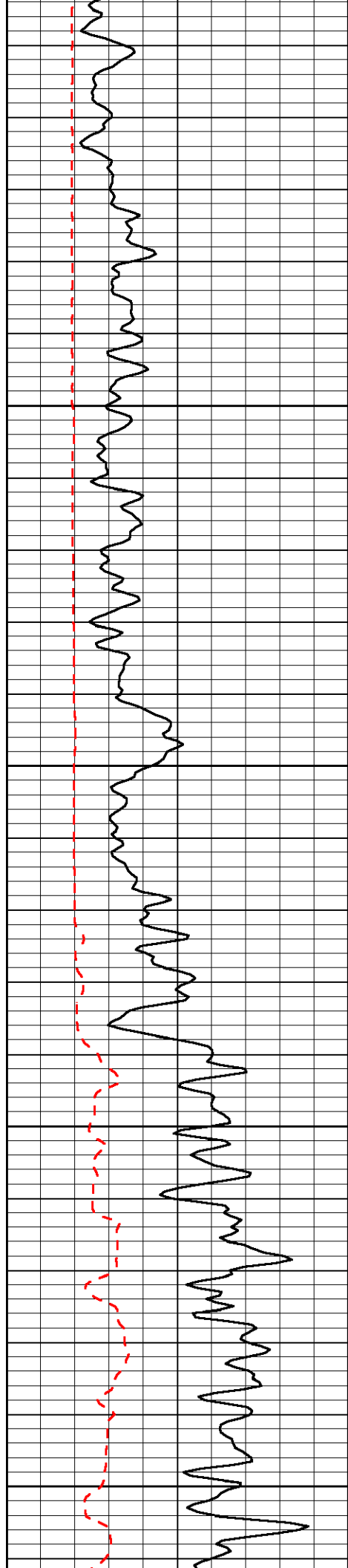


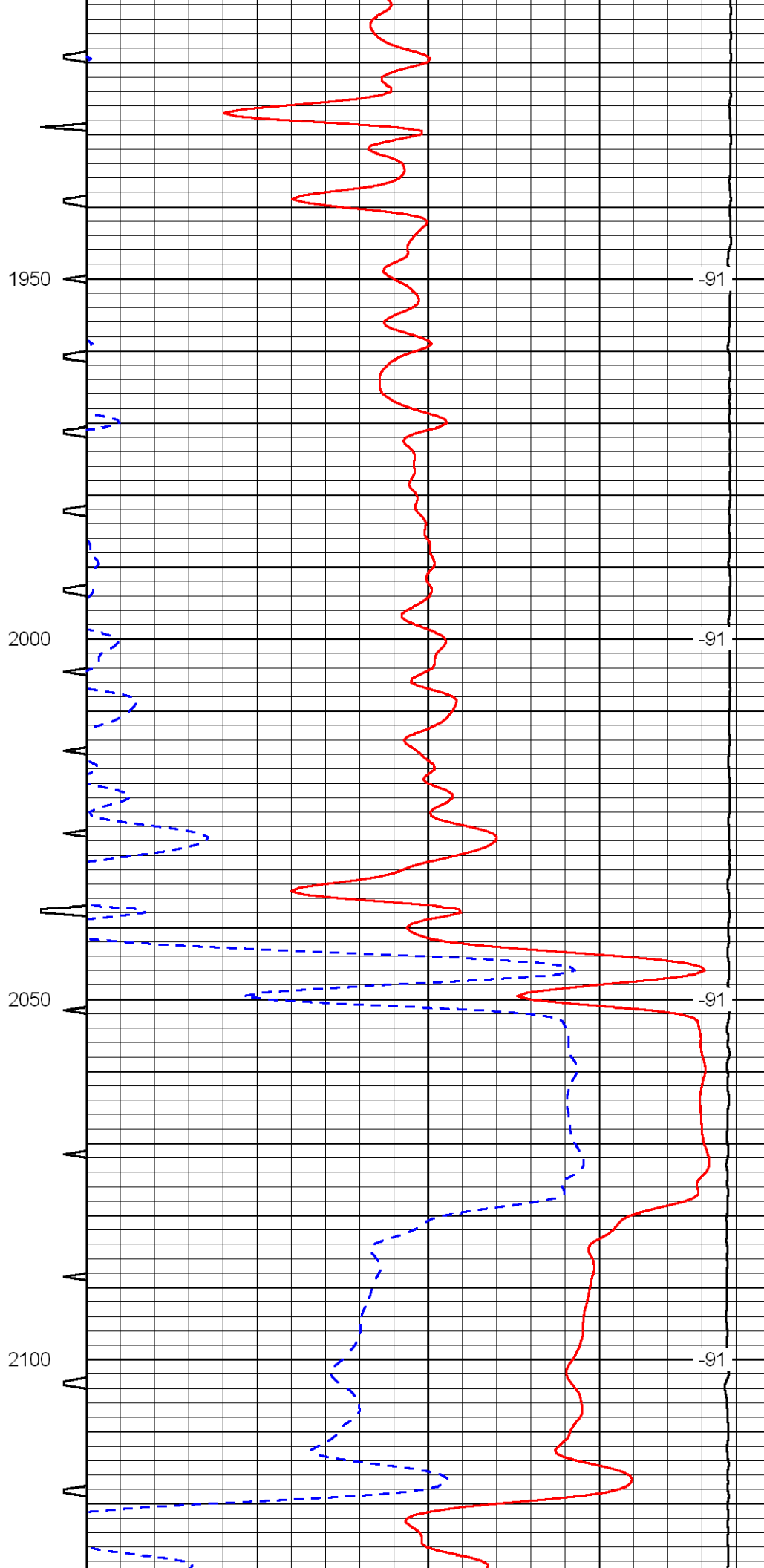
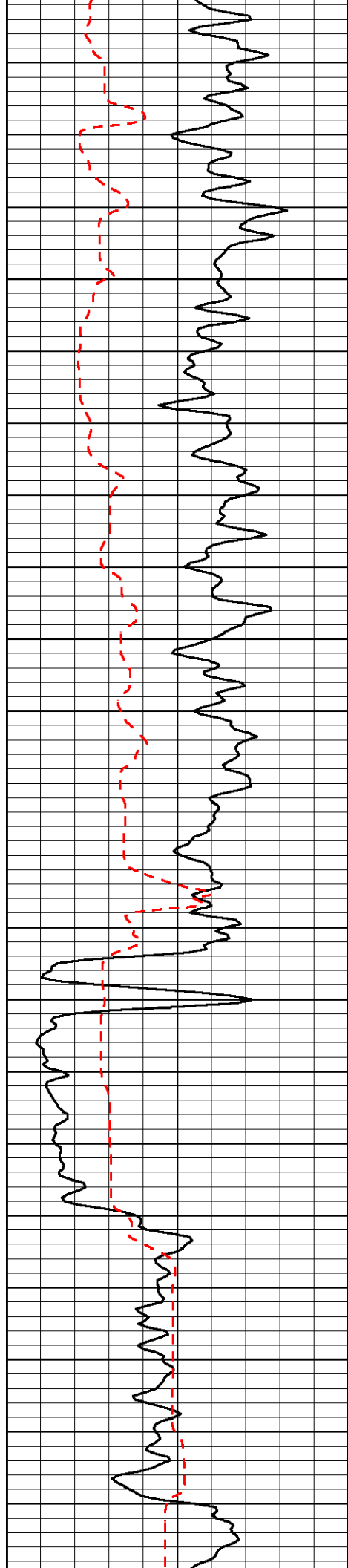


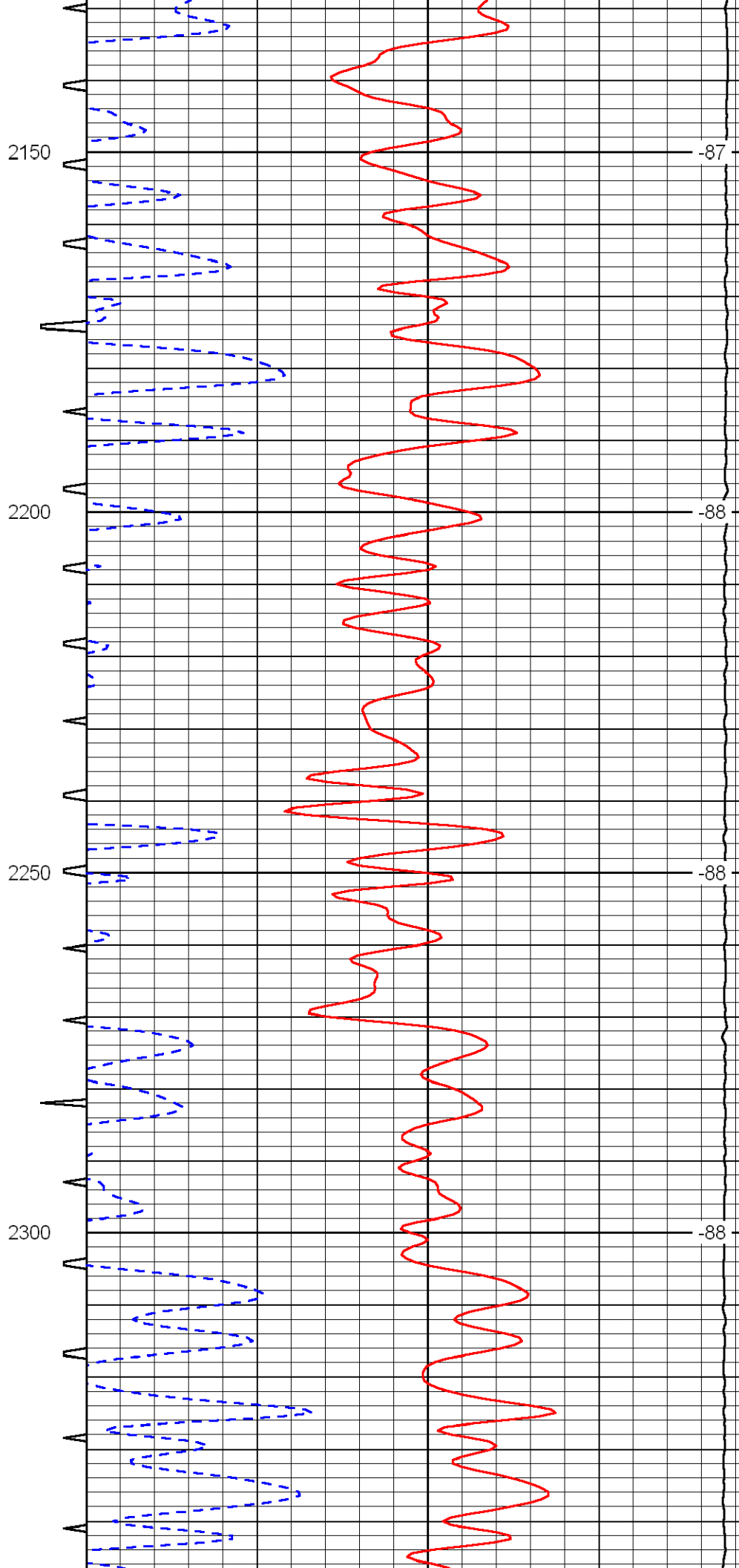


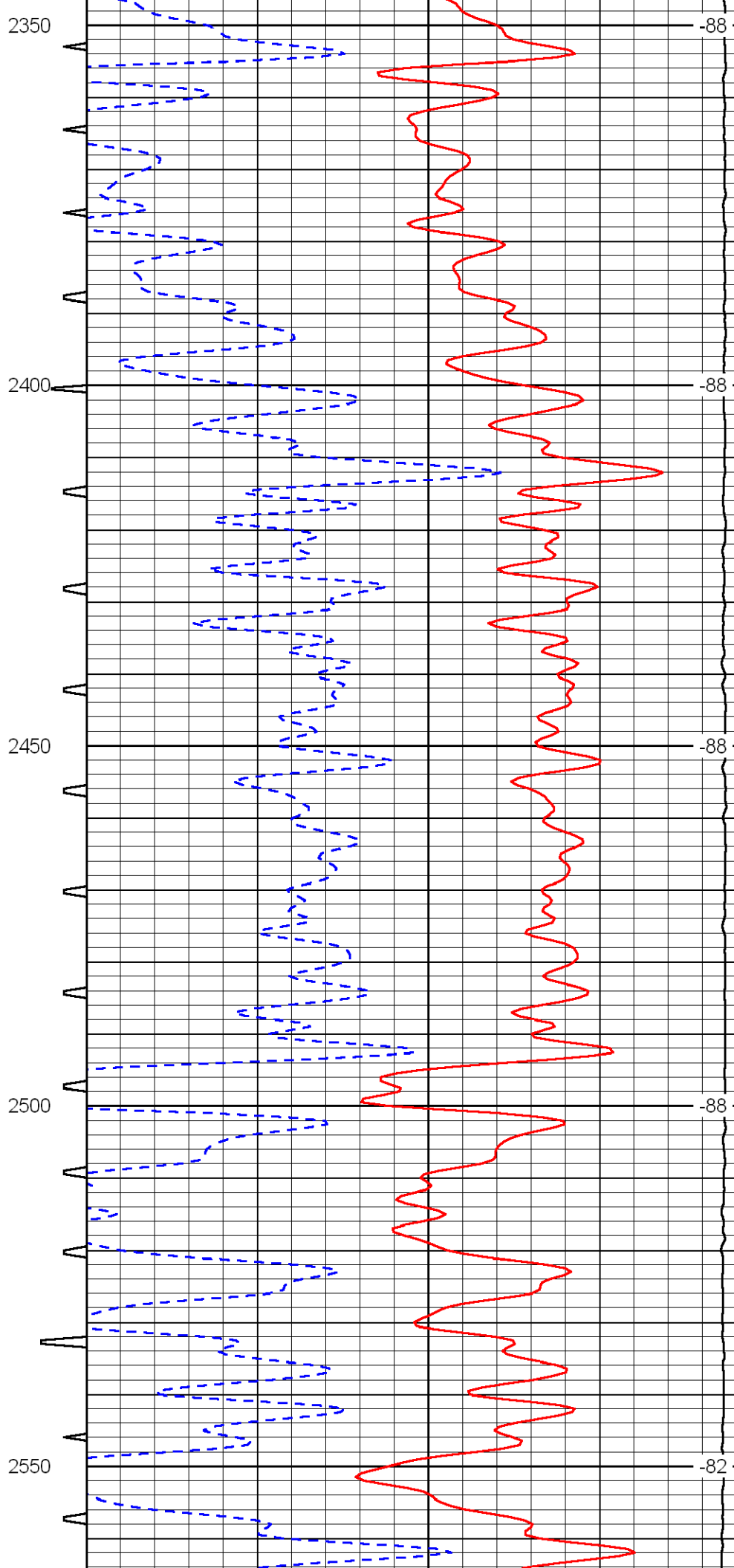
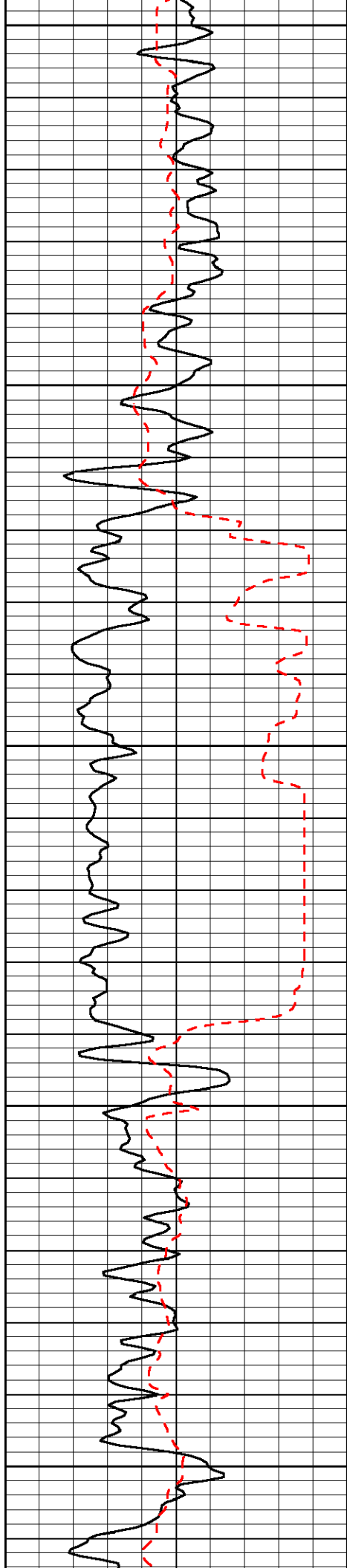


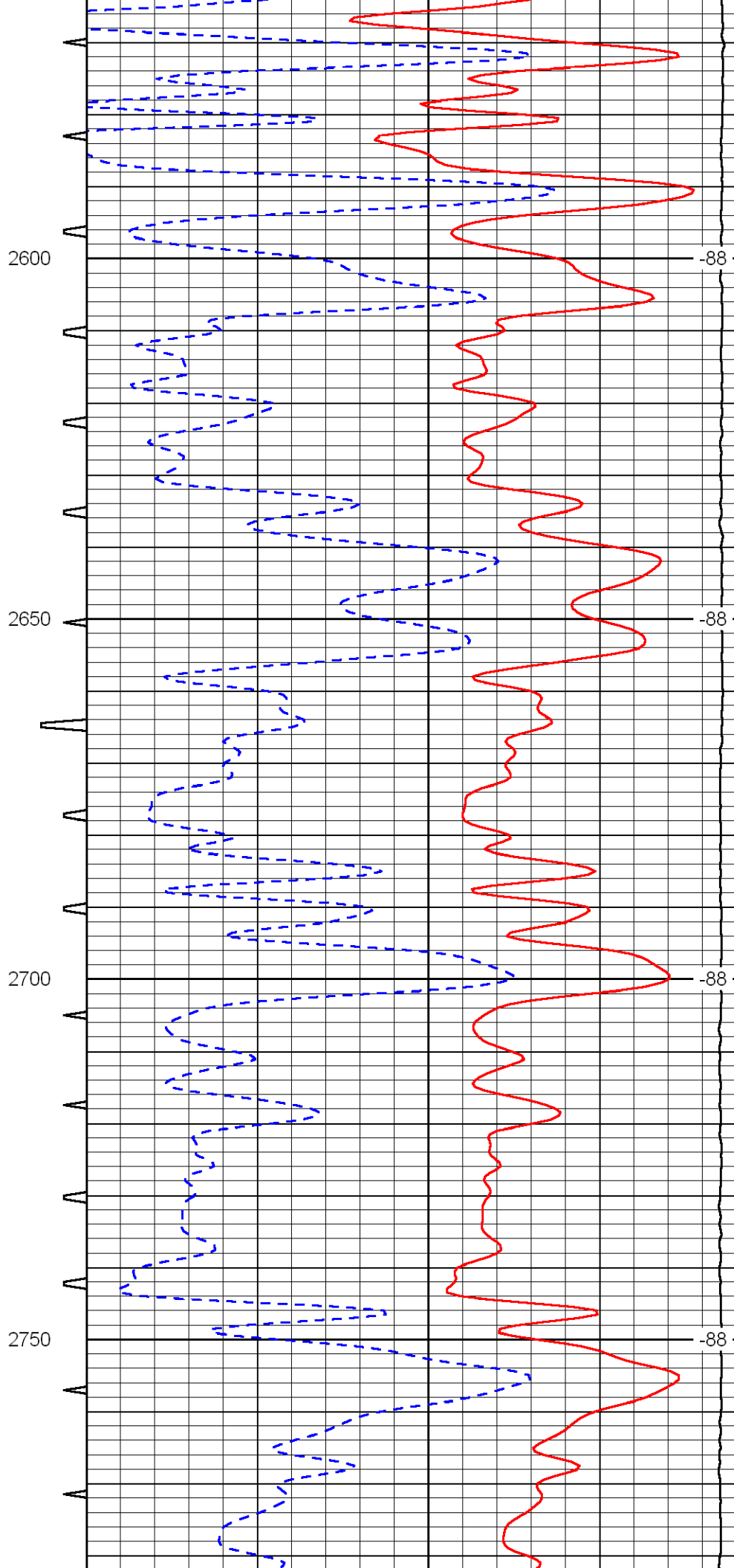
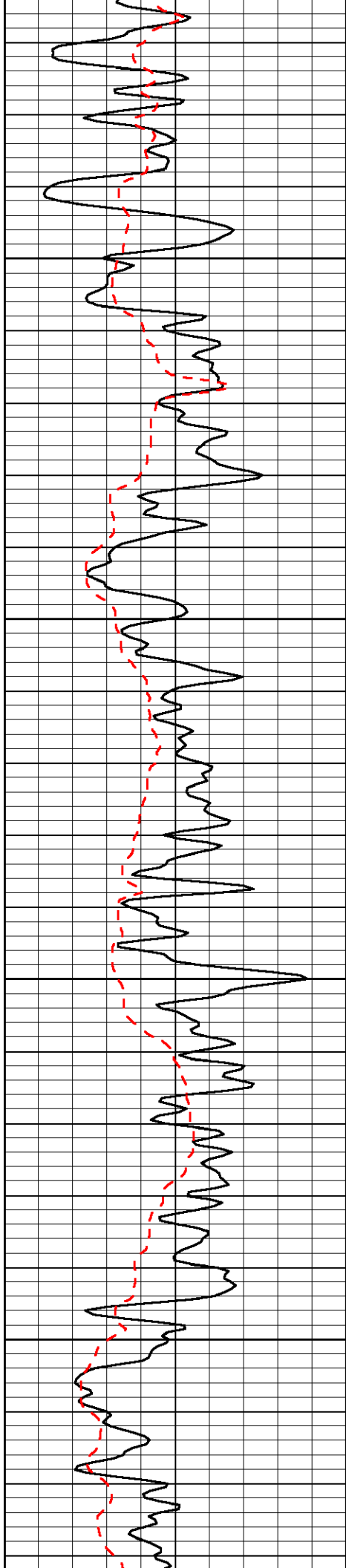


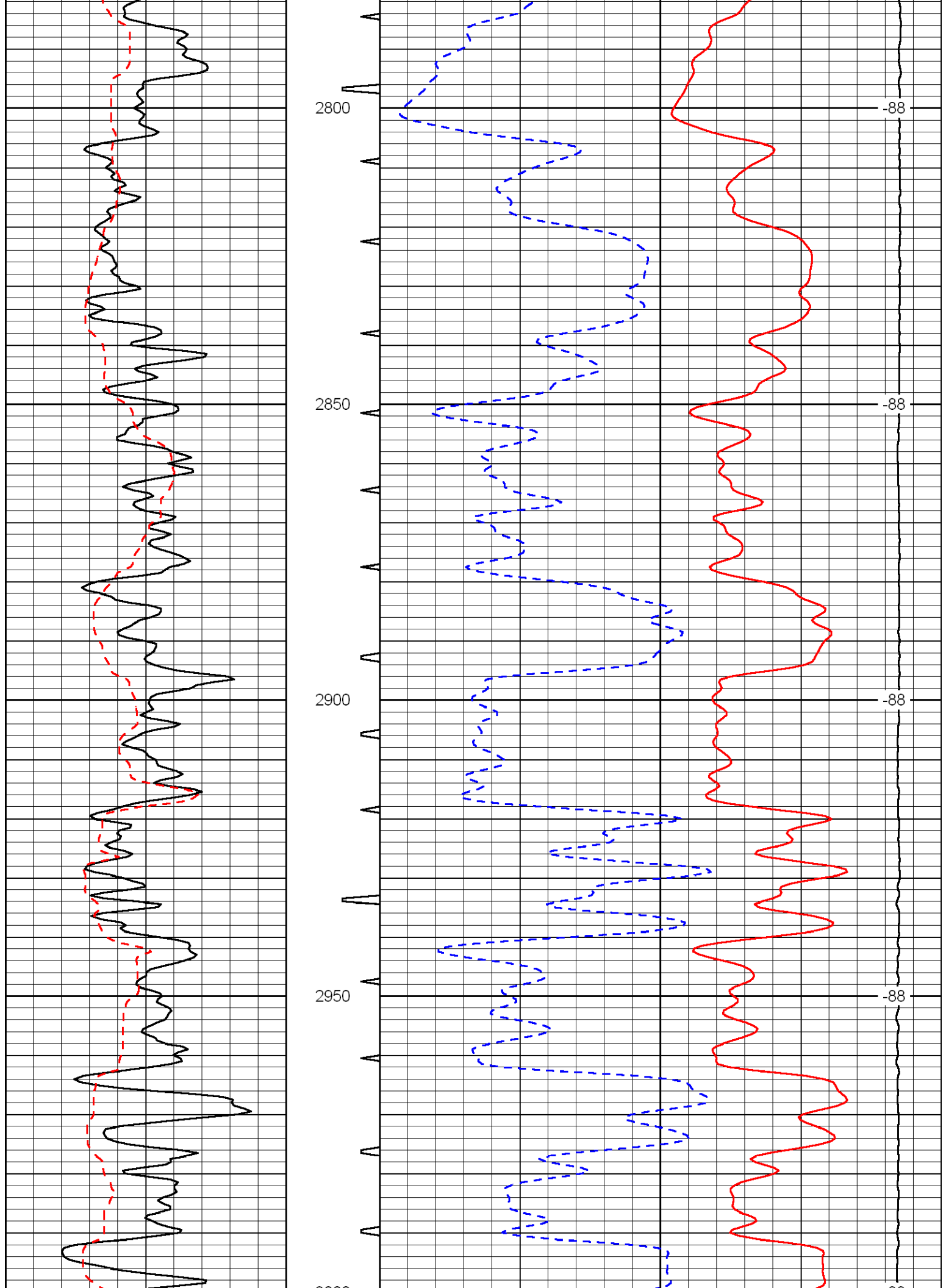


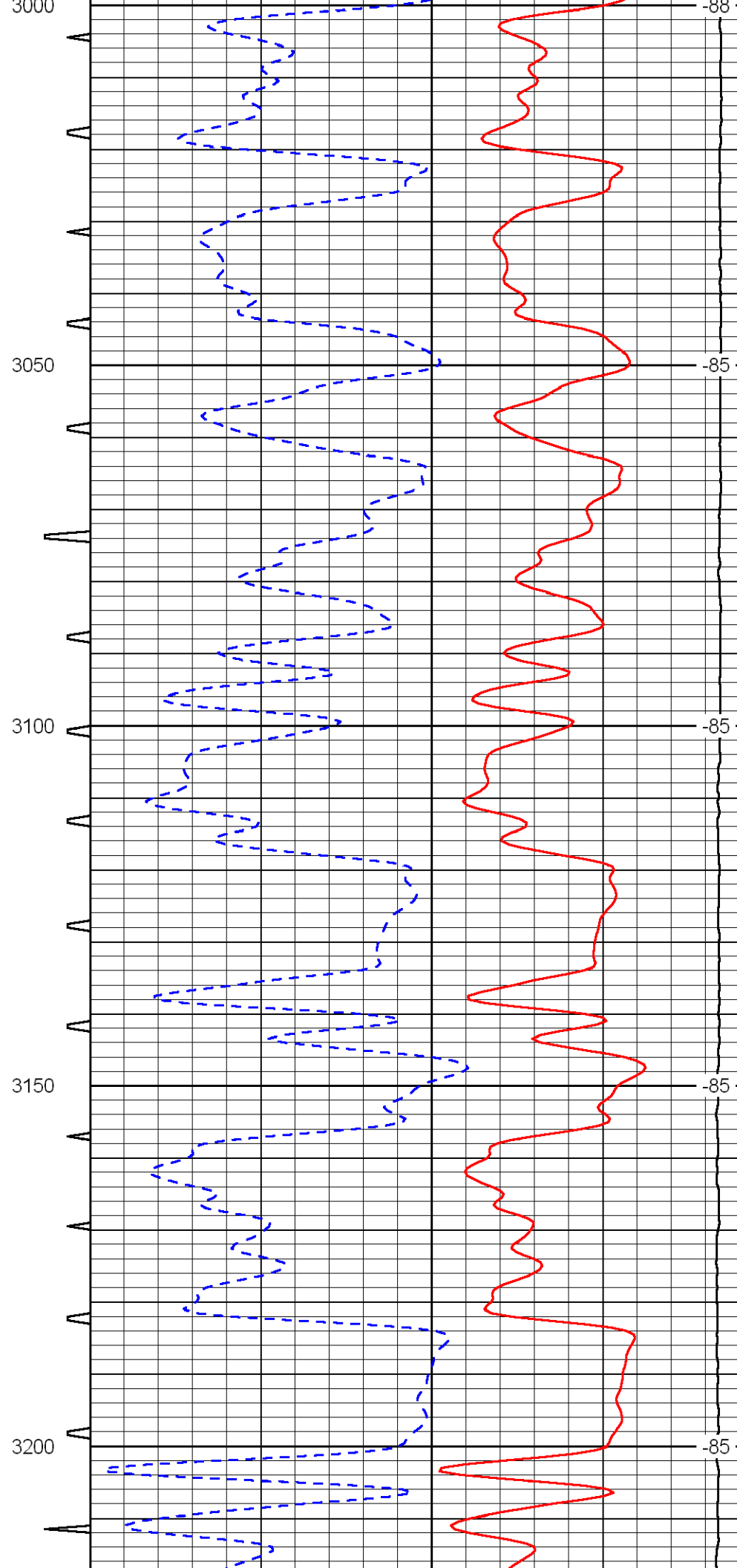
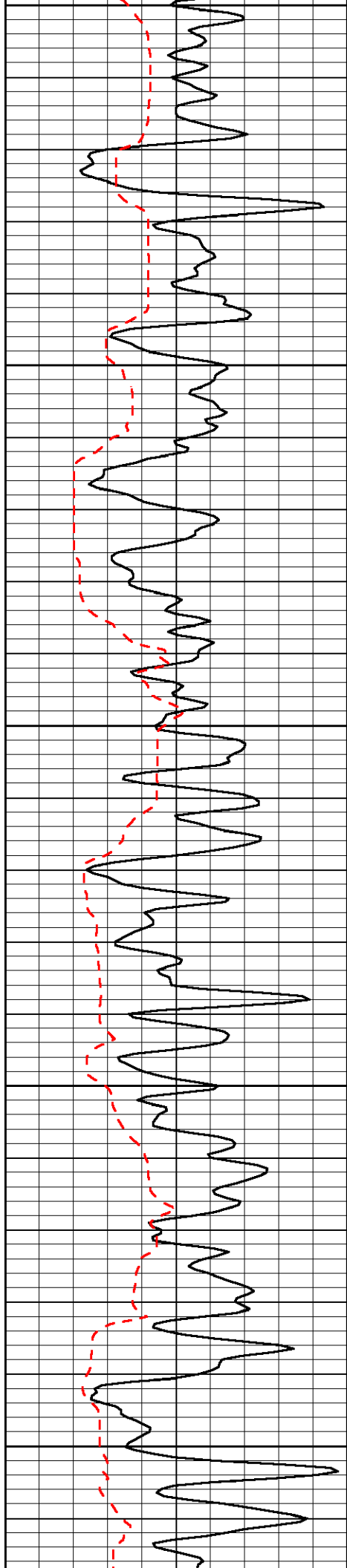


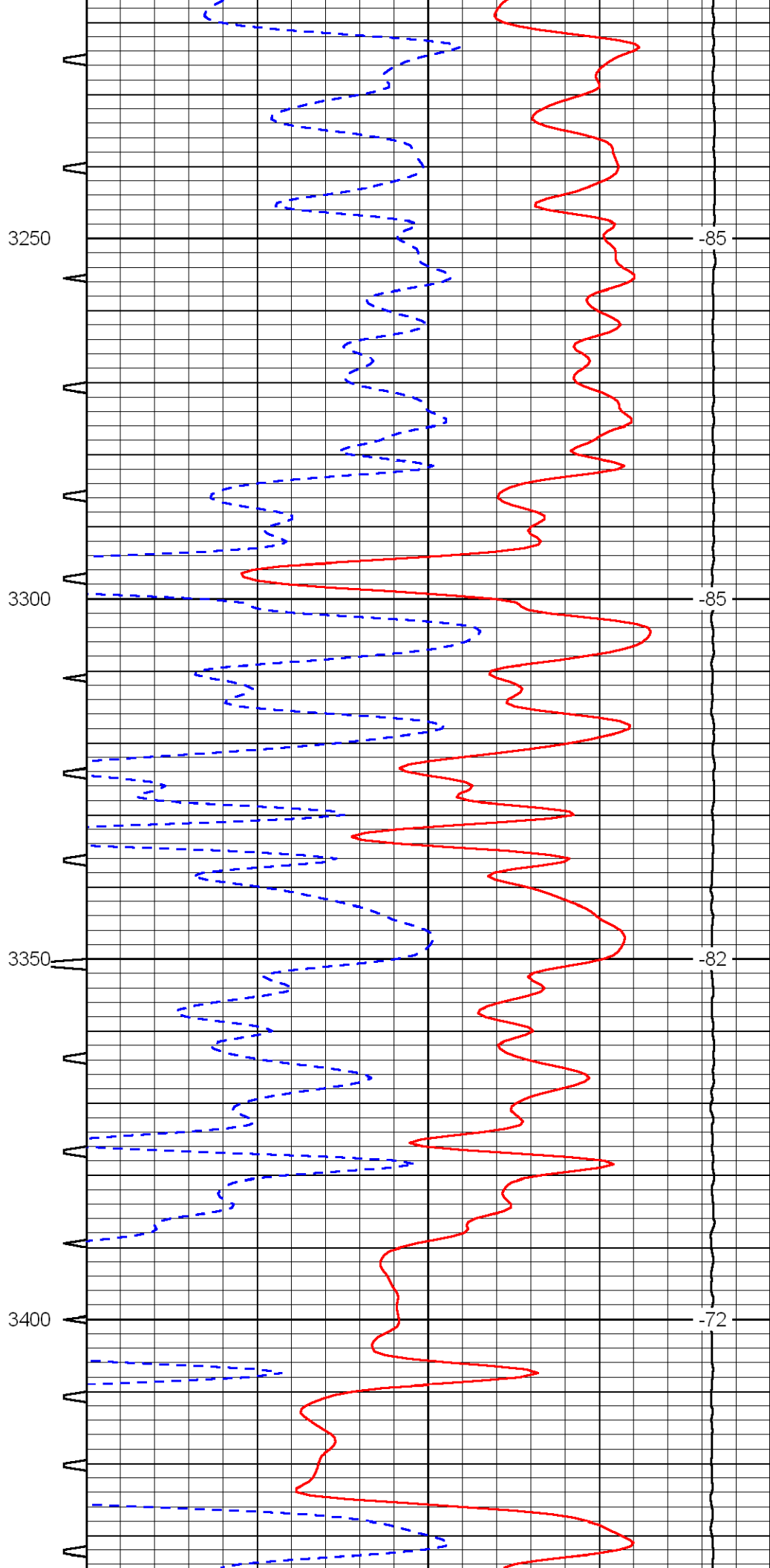
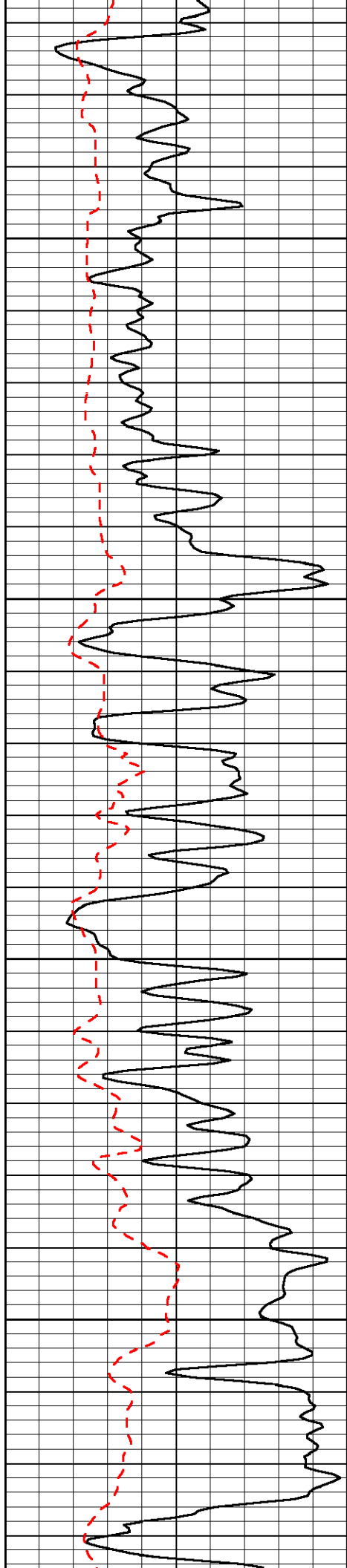


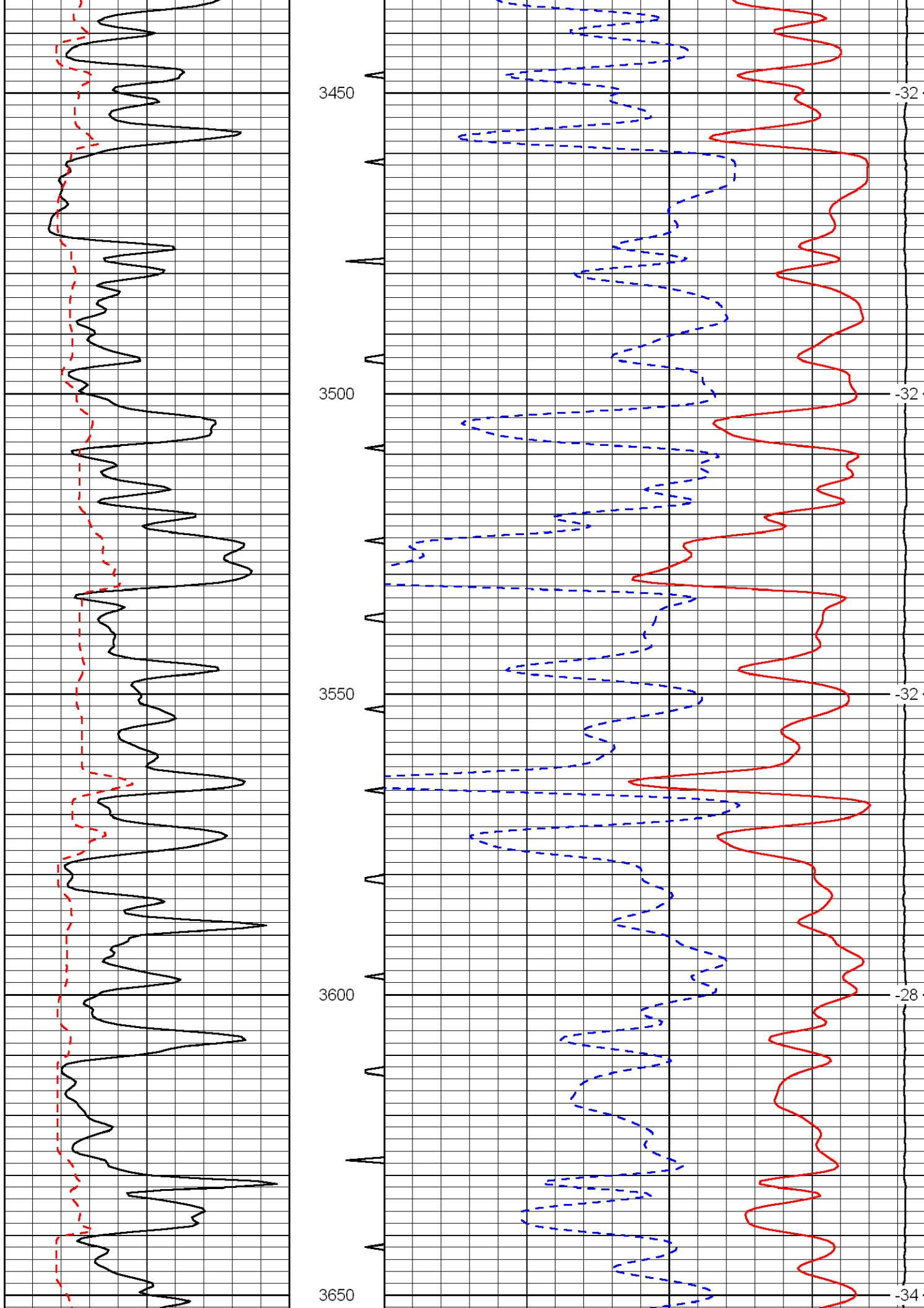


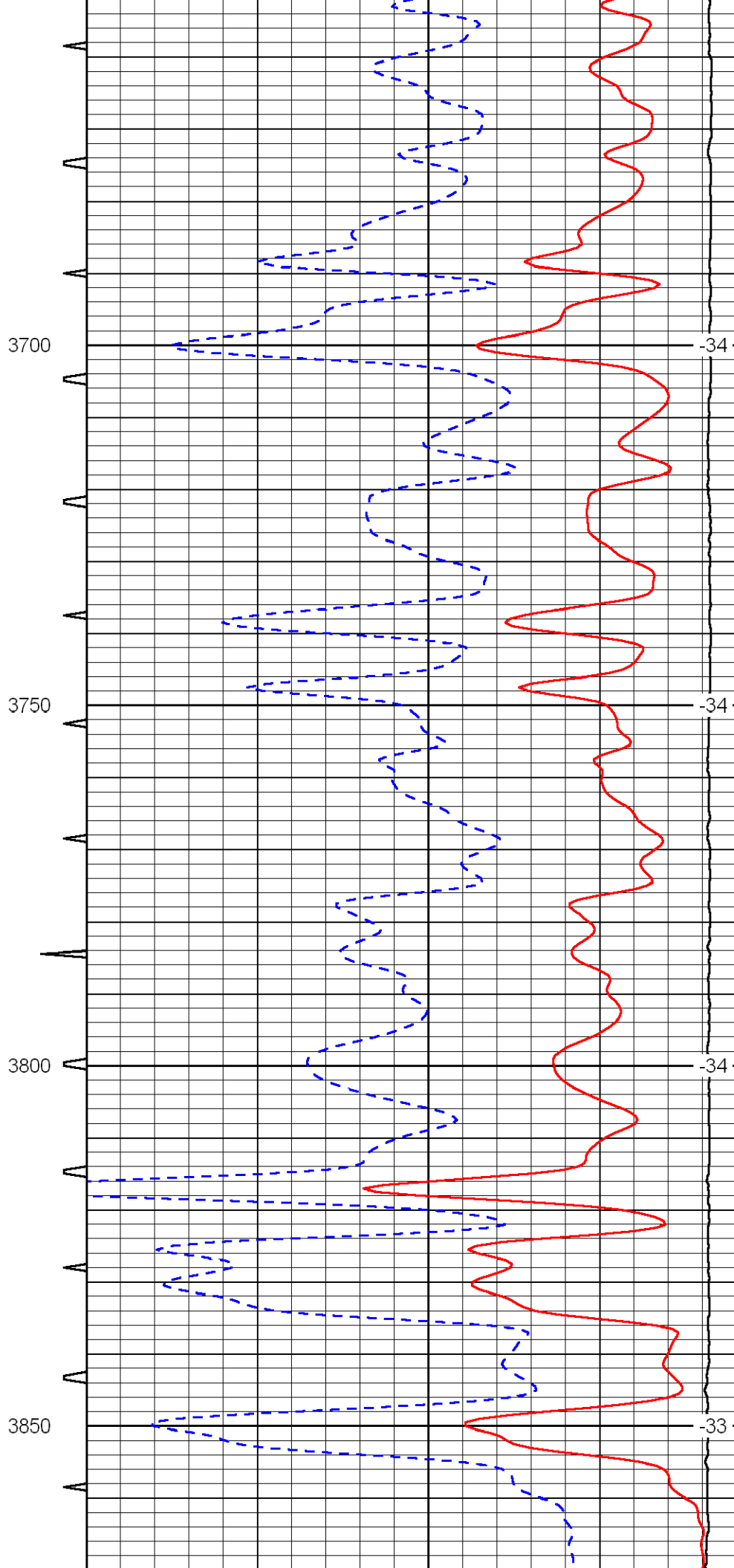
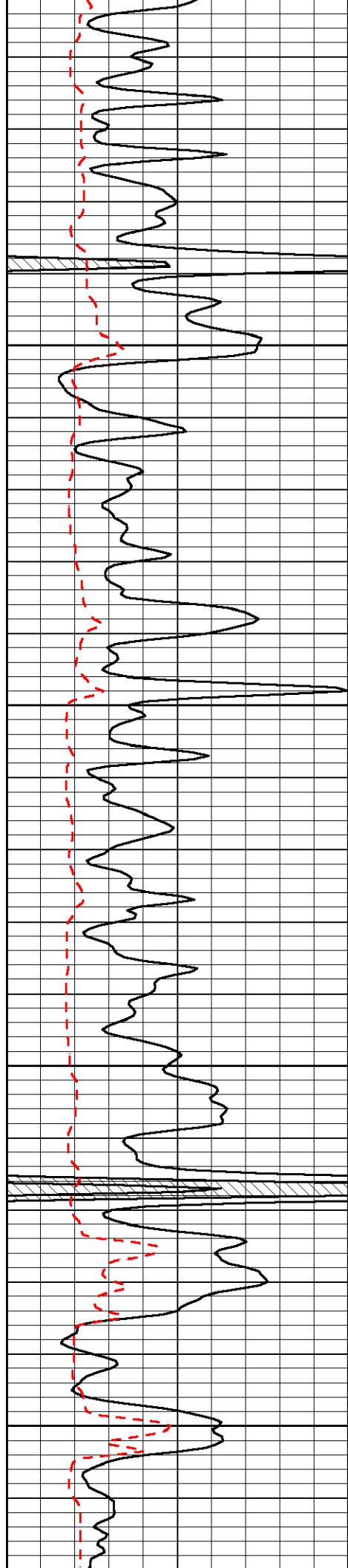


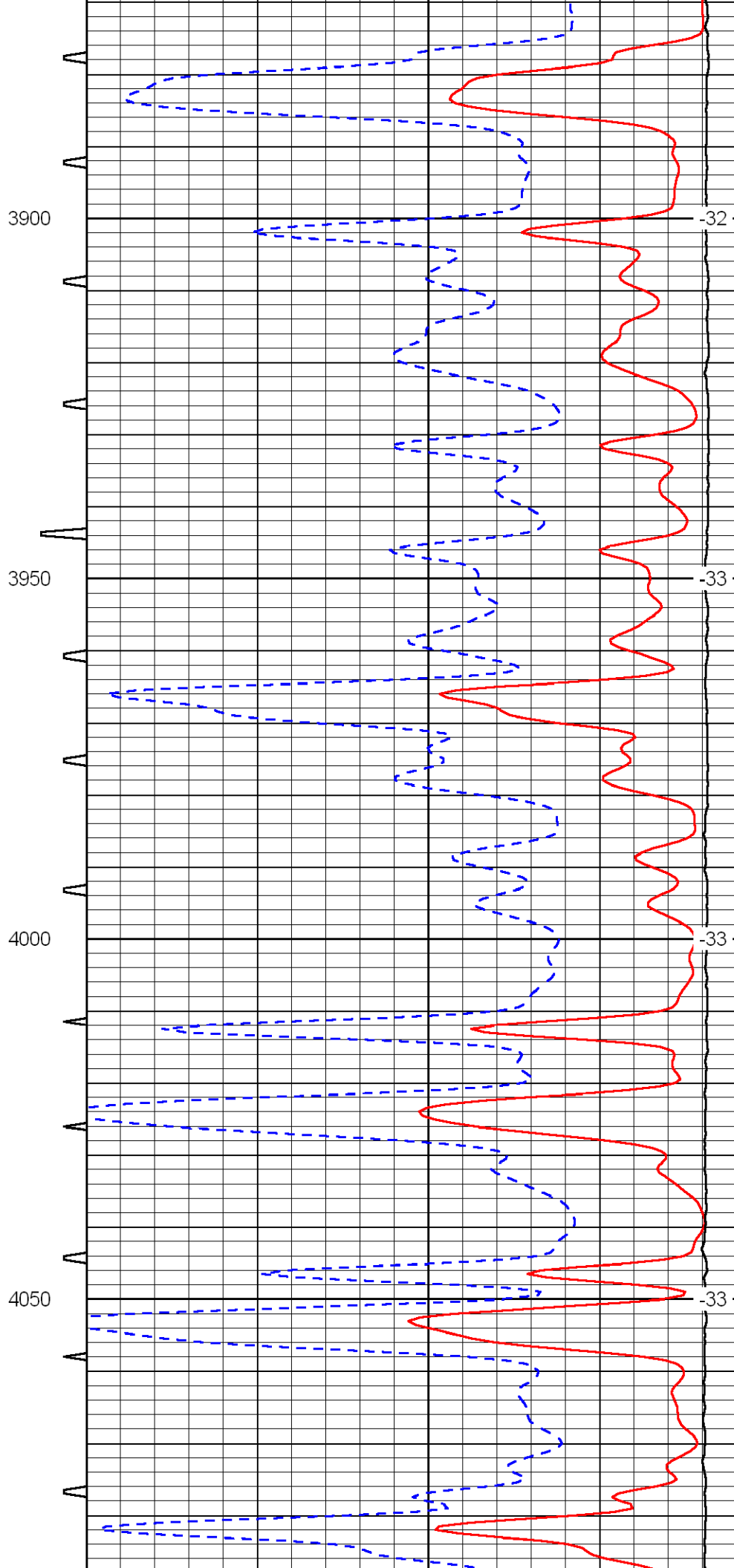
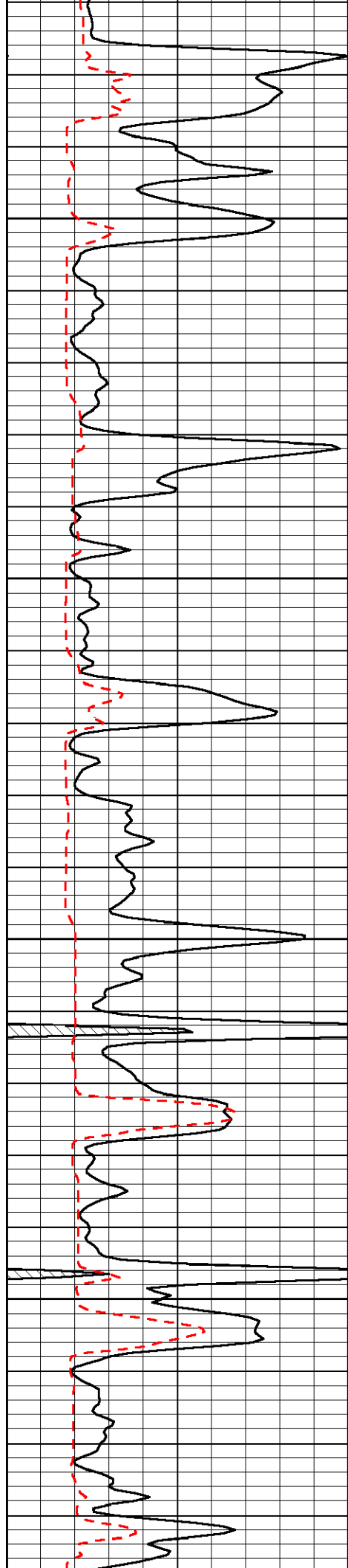


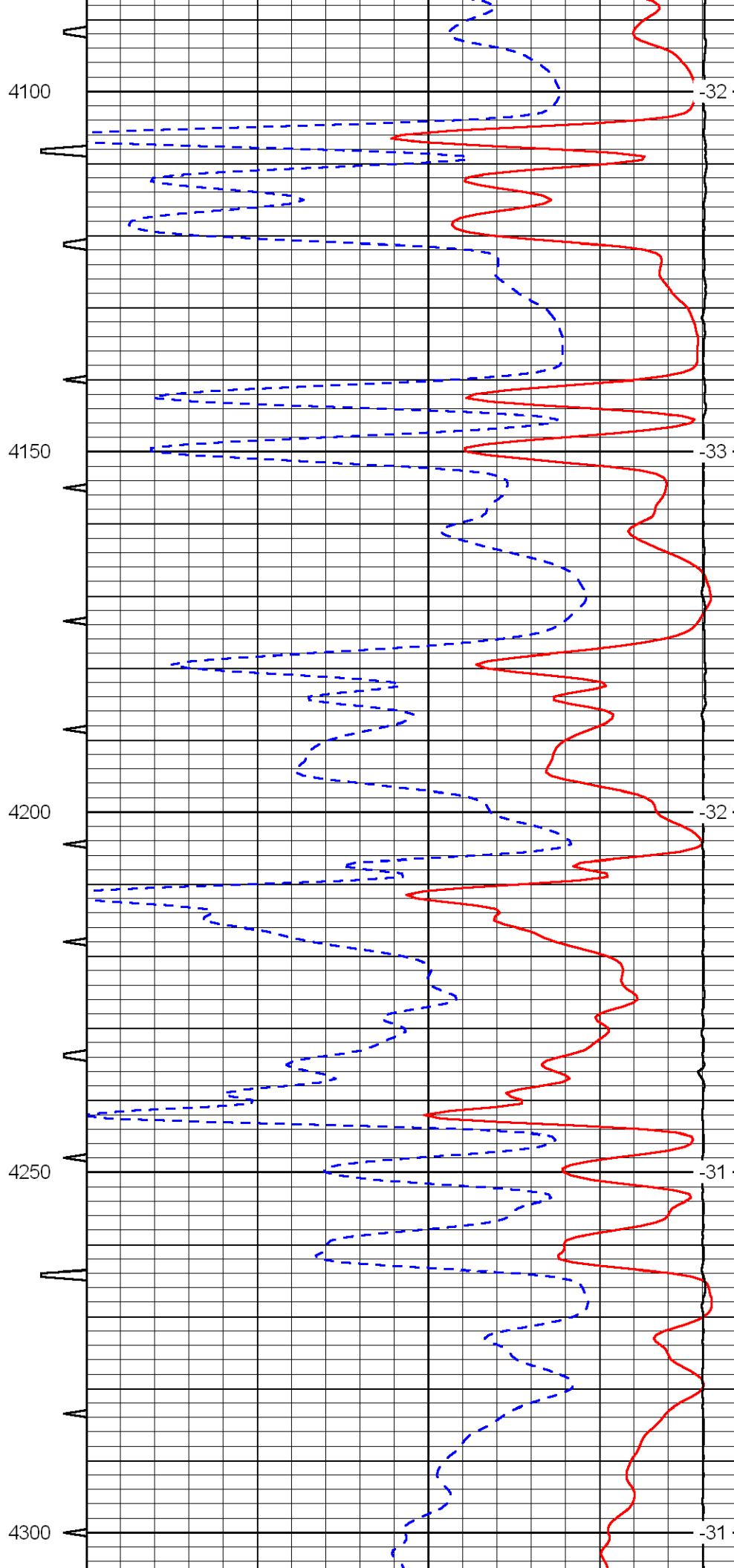
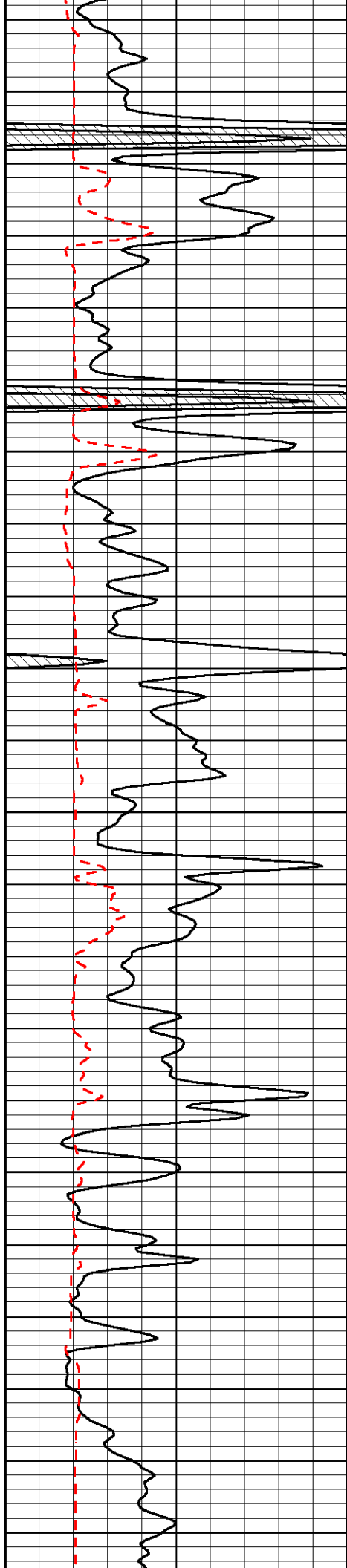


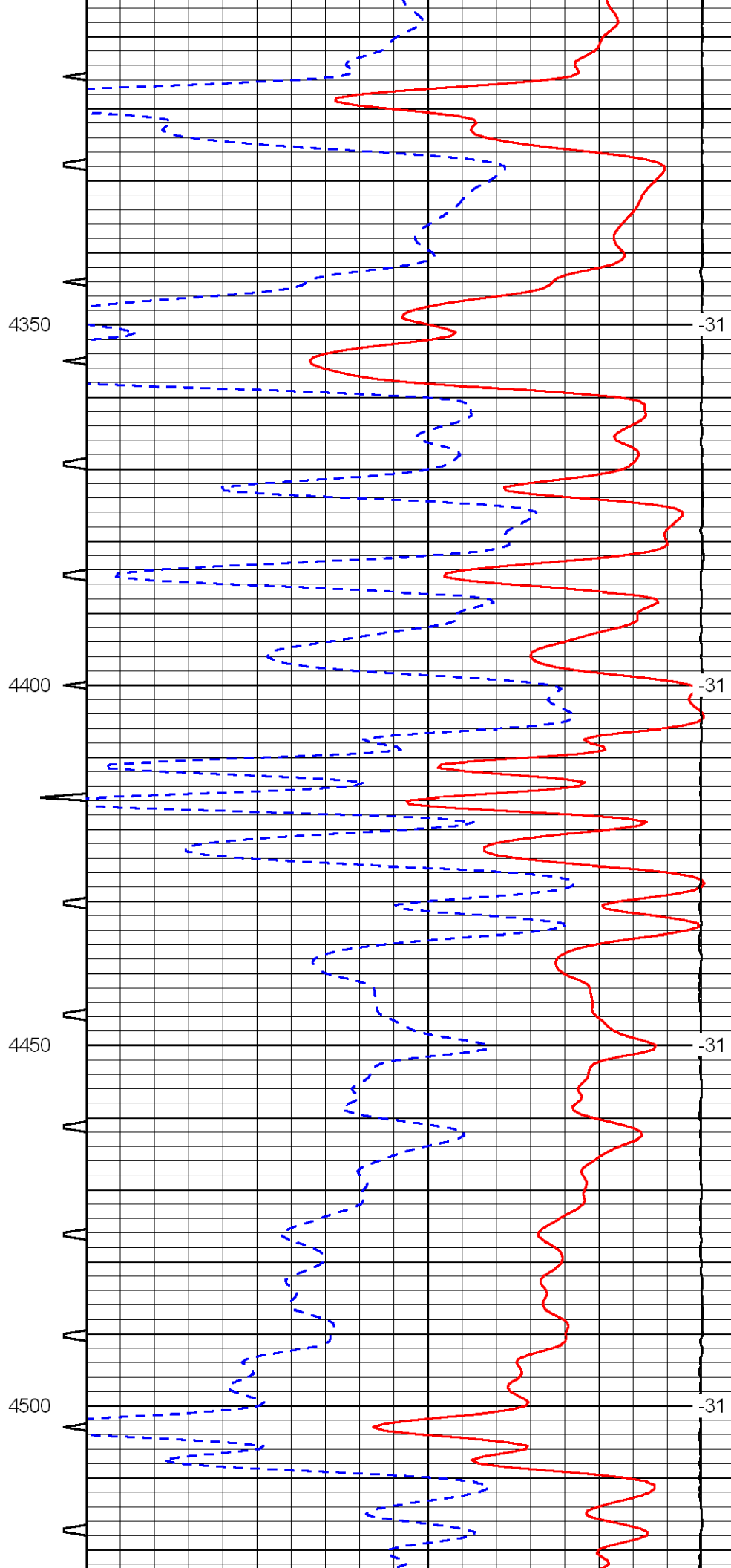
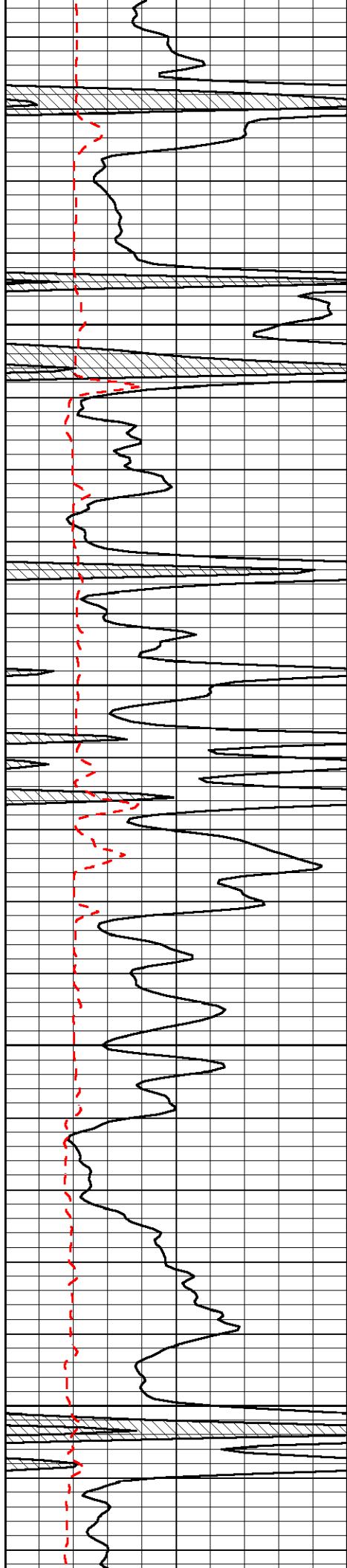


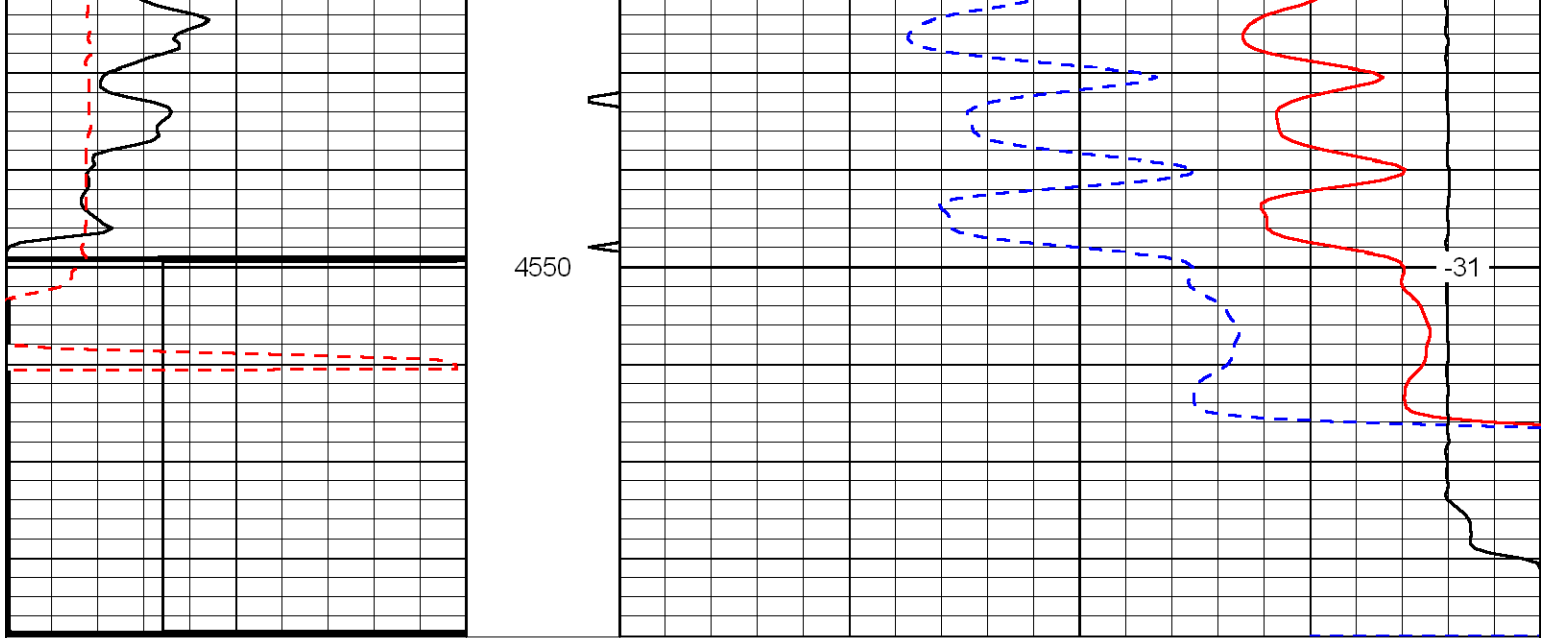












0	Gamma Ray	150	Sonic Int	140	Delta Time (usec/ft) (usec/ft)	40
150	Gamma Ray	300	(m/sec)	30	Sonic Porosity (pu)	-10
6	dCAL (GAPI)	16	5 0	15000	LTEN (lb) (lb)	0
						LSPD (ft/min)