



Microresistivity Log

DIGITAL LOG (785) 625-3858

API No.	15-101-22,232-00-00		
Company	Flatirons Resources L.L.C.		
Well	Church Lawrence Unit No. 11-14		
Field	Northwest		
County	Lane	State	Kansas
Location	1085' FNL & 1300' FWL		
Sec: 14	Twp: 16S	Rge: 28W	
Permanent Datum	Ground Level	Elevation 2628	Other Services CNL/CDL DIL/BHCS
Log Measured From	Kelly Bushing	5 Ft. Above Perm. Datum	
Drilling Measured From	Frotkelly Bushing		K.B. 2633 D.F. 2628 G.L. 2628

Date	05/22/2010
Run Number	Two
Depth Driller	4575
Depth Logger	4574
Bottom Logged Interval	4573
Top Log Interval	3450
Casing Driller	8.625 @ 217
Casing Logger	217
Bit Size	7.875
Type Fluid in Hole	Chemical
Salinity, ppm CL	3.500
Density / Viscosity	9.2 60
pH / Fluid Loss	10.0 8.8
Source of Sample	Flowline
Rm @ Meas. Temp	1 @ 70
Rmf @ Meas. Temp	.75 @ 70
Rmc @ Meas. Temp	1.35 @ 70
Source of Rmf / Rmc	Charts
Rm @ BHT	.57 @ 124
Operating Rig Time	5 Hours
Max Rec. Temp. F	124
Equipment Number	10
Location	Hays
Recorded By	Jason Wellbrock
Witnessed By	Clayton Erickson

<<< Fold Here >>>

All interpretations are opinions based on inferences from electrical or other measurements and we cannot and do not guarantee the accuracy or correctness of any interpretation, and we shall not, except in the case of gross or willful negligence on our part, be liable or responsible for any loss, costs, damages, or expenses incurred or sustained by anyone resulting from any interpretation made by any of our officers, agents or employees. These interpretations are also subject to our general terms and conditions set out in our current Price Schedule.

Comments

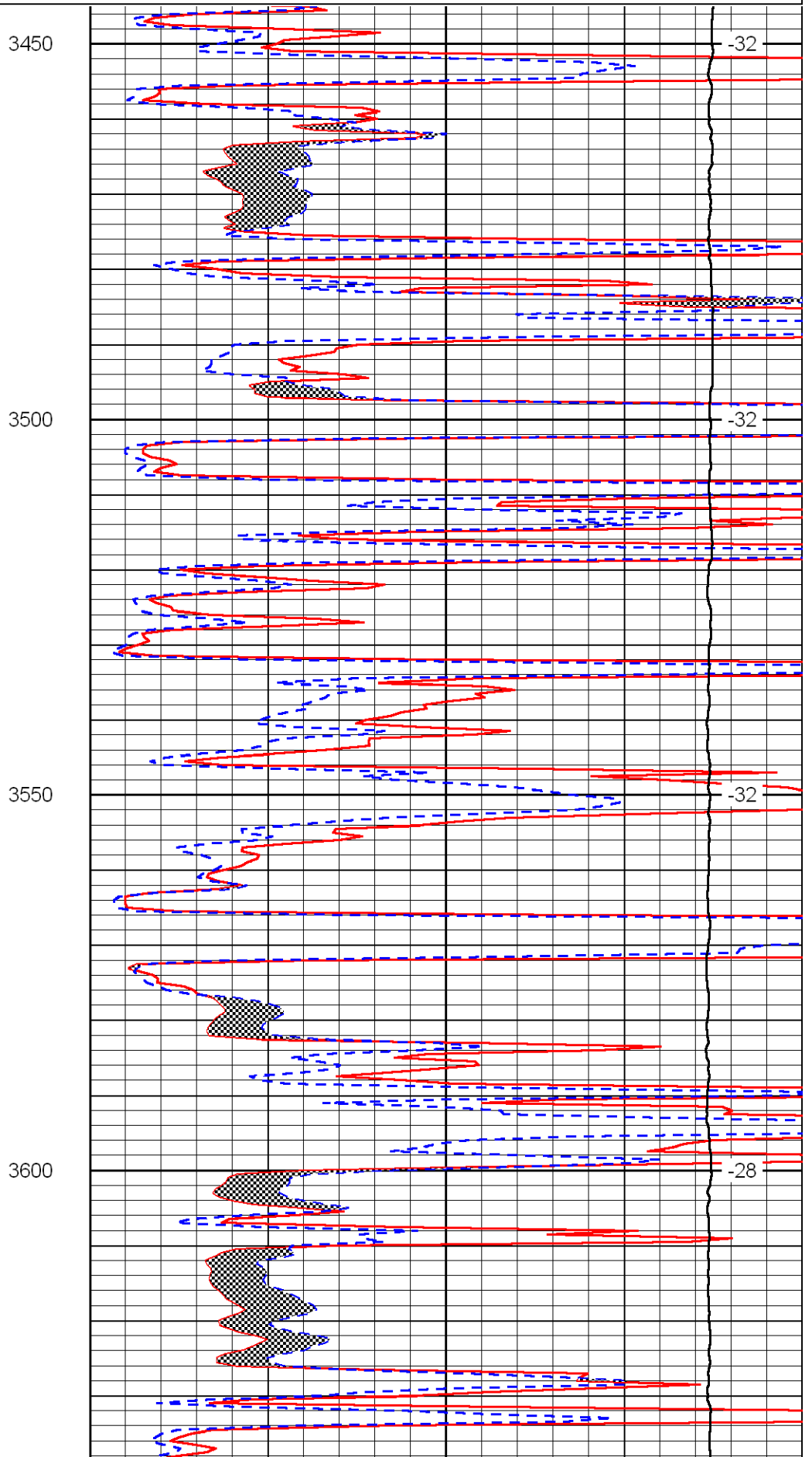
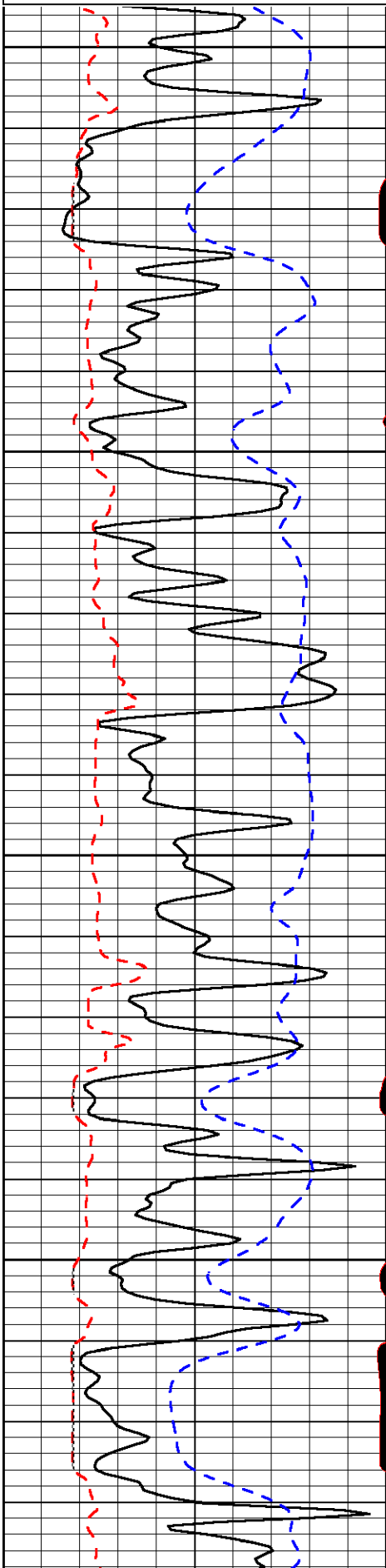
Thank you for using Log-Tech, Inc.
(785) 625-3858

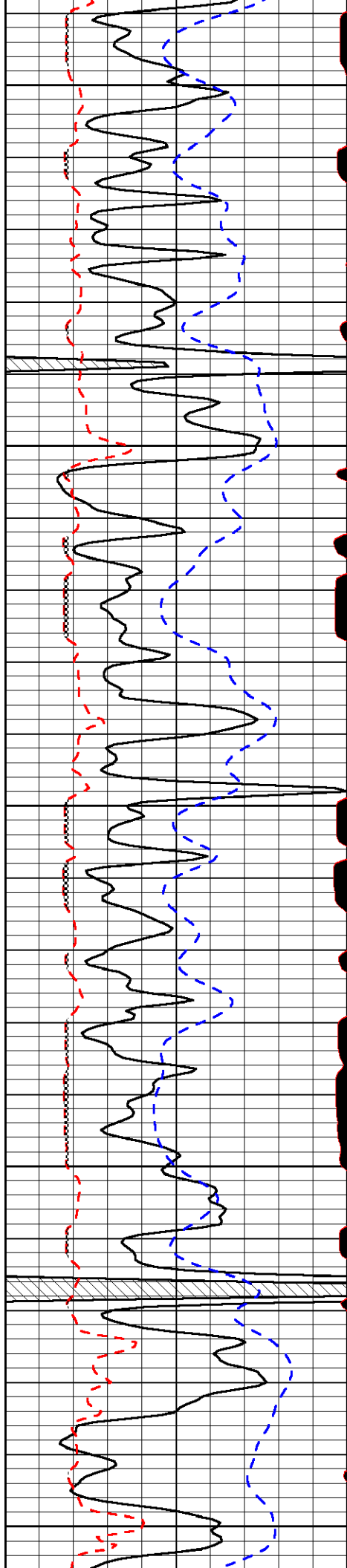
Shields 4E, 1 1/2 N, W Into

Database File: flathd.db
 Dataset Pathname: dil/flat2in
 Presentation Format: micro
 Dataset Creation: Sat May 22 11:03:20 2010
 Charted by: Depth in Feet scaled 1:240

0	Gamma Ray	150
6	MCAL (GAPI)	16
2.875	Mud Cake (GAPI)	7.875
-200	SP (mV)	0

0	Micro Inverse 1 X 1 (Ohm-m)	40
0	Micro Normal 2" (Ohm-m)	40
10000	Line Weight (lb)	0
		LSPD (ft/min)





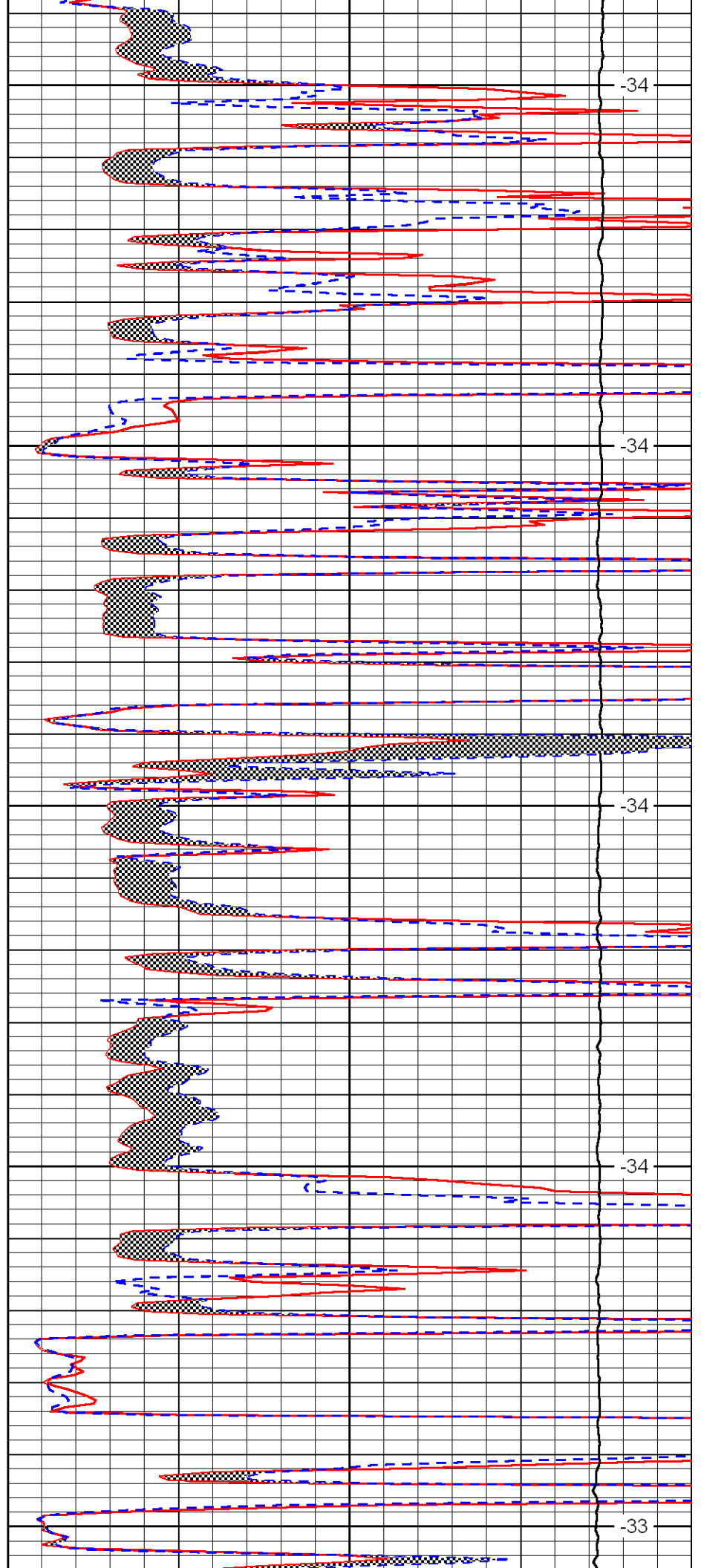
3650

3700

3750

3800

3850



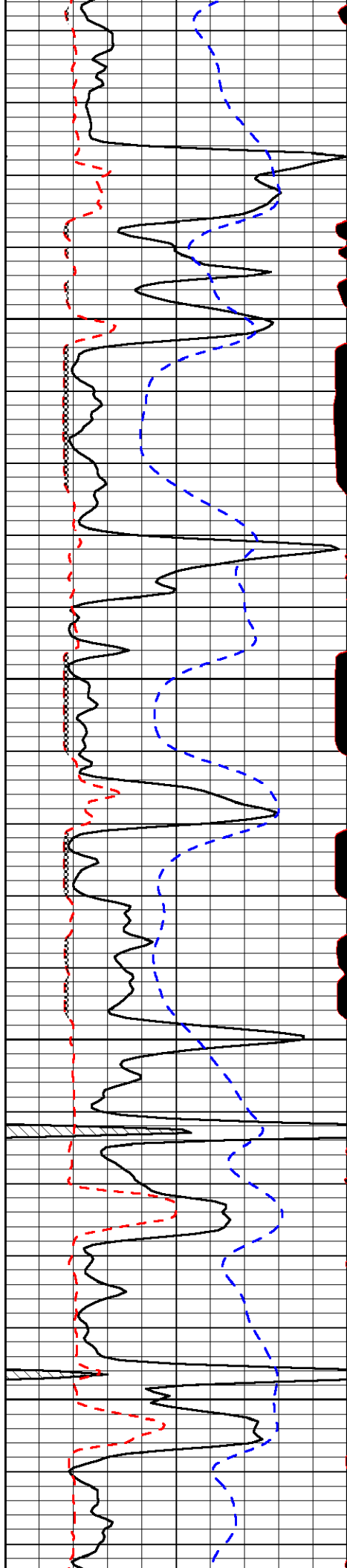
-34

-34

-34

-34

-33

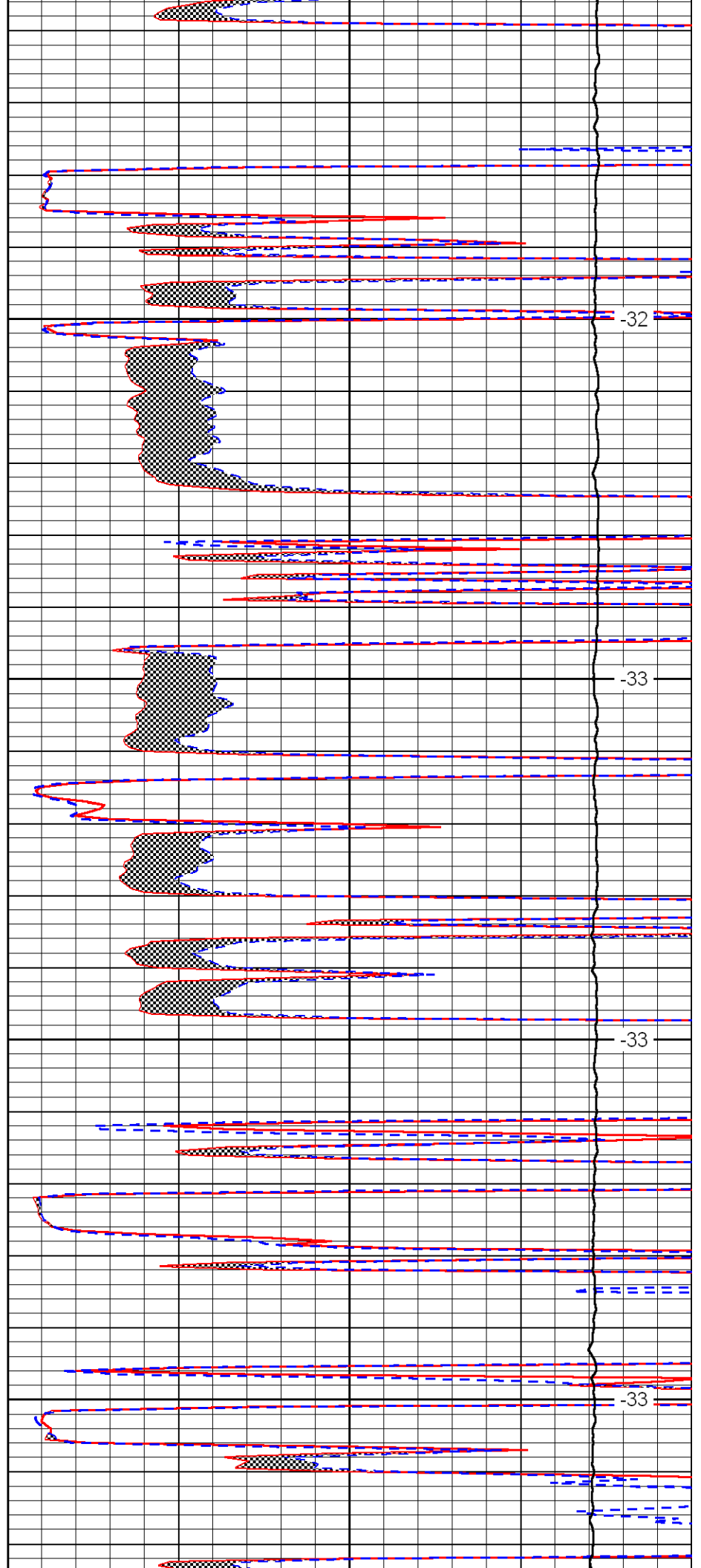


3900

3950

4000

4050

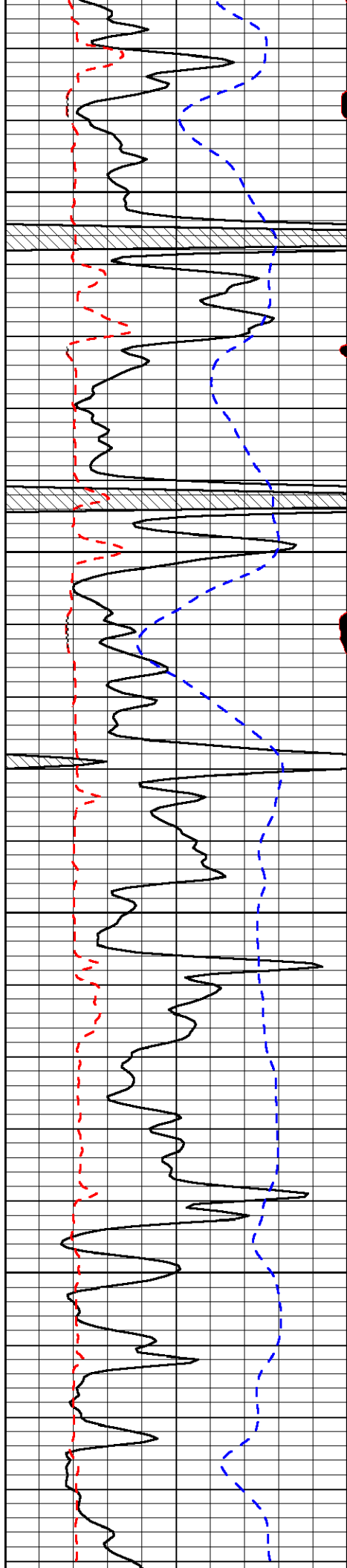


-32

-33

-33

-33

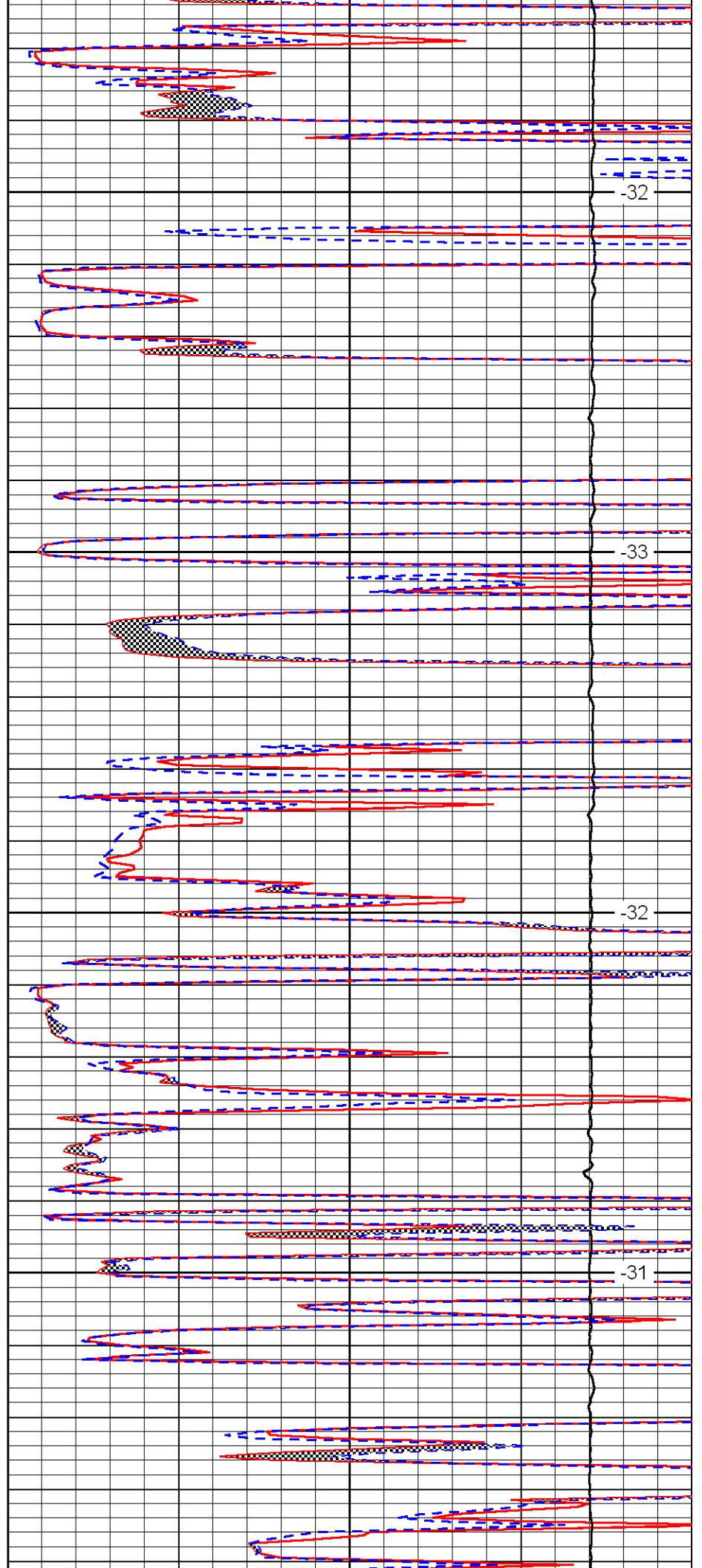


4100

4150

4200

4250

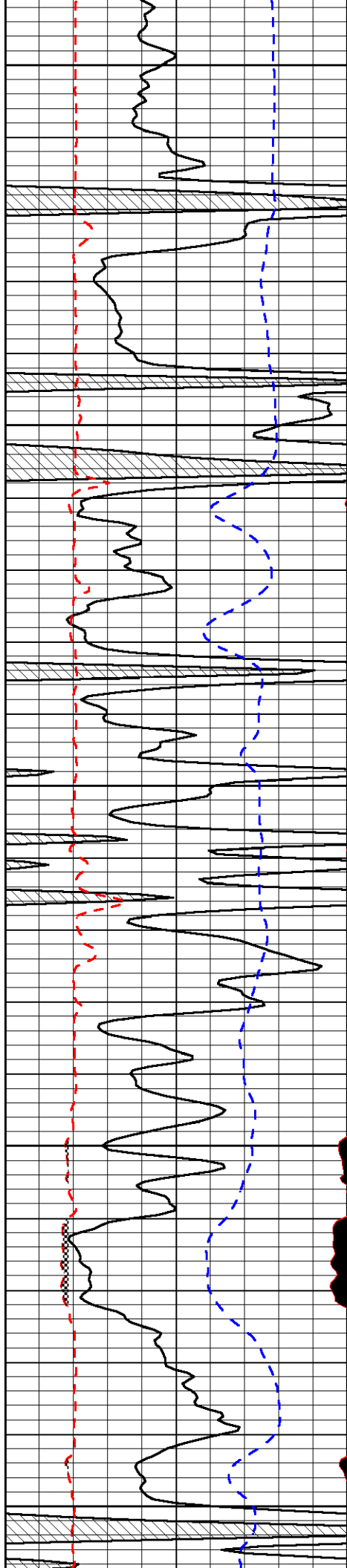


-32

-33

-32

-31



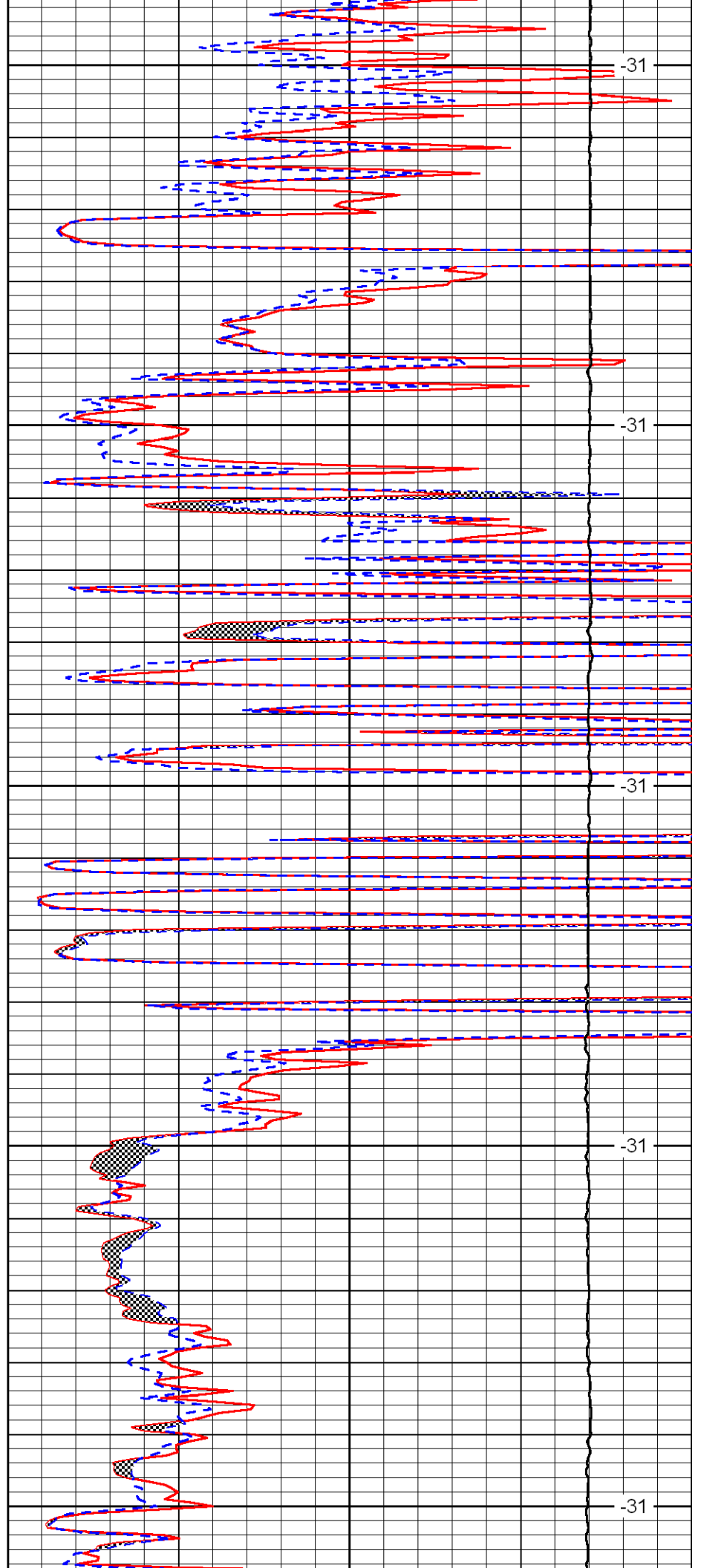
4300

4350

4400

4450

4500



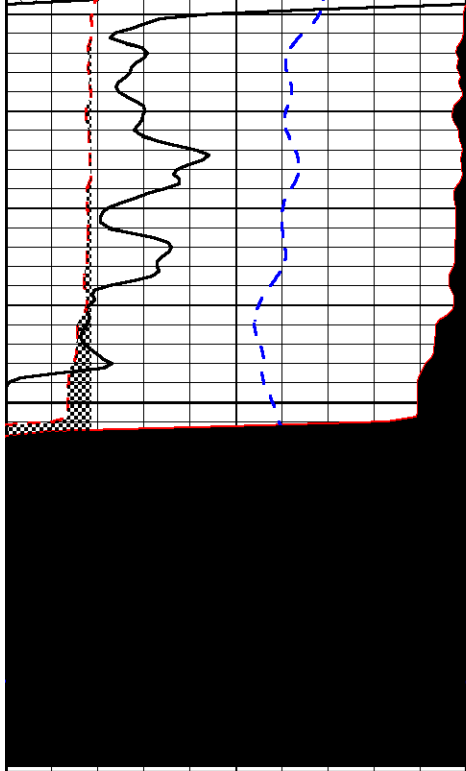
-31

-31

-31

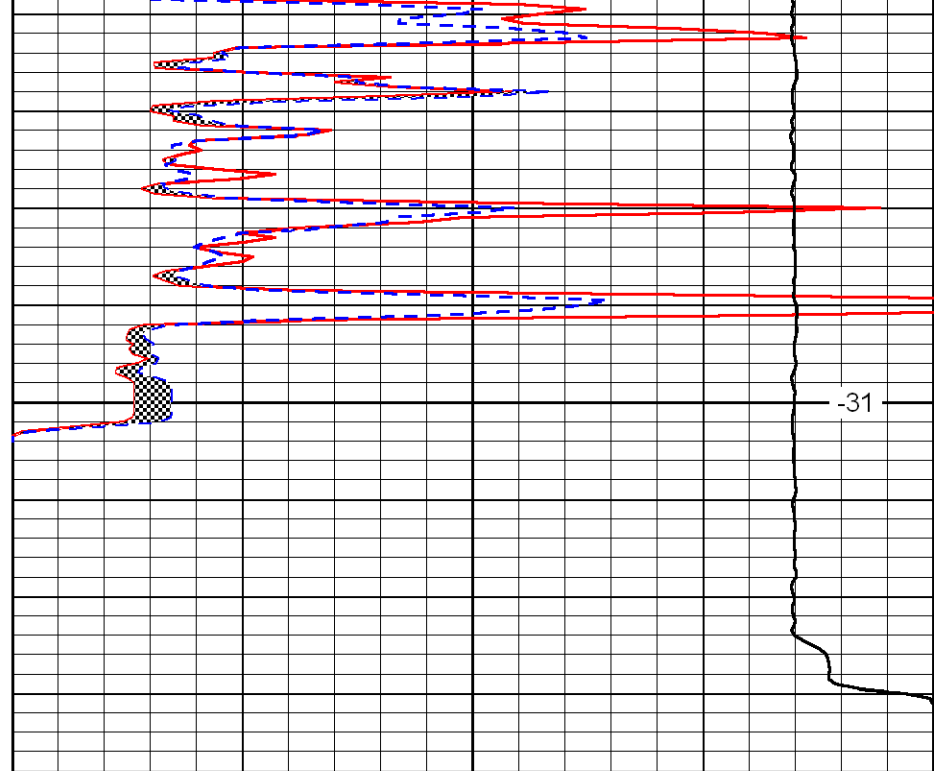
-31

-31



0	Gamma Ray	150
6	MCAL (GAPI)	16
2.875	Mud Cake (GAPI)	7.875
-200	SP (mV)	0

4550



0	Micro Inverse 1 X 1 (Ohm-m)	40
0	Micro Normal 2" (Ohm-m)	40
10000	Line Weight (lb)	0

-31

LSPD
(ft/min)