



Dual Compensated
Porosity Log

DIGITAL LOG (785) 625-3858

API No. 15-101-22,232-00-00

Company Flatirons Resources L.L.C.
Well Church Lawrence Unit No. 11-14
Field Northwest
County Lane State Kansas

Location 1085' FNL & 1300' FWL

Sec: 14 Twp: 16S Rge: 28W

Other Services
DILMEL
BHCS

Permanent Datum Ground Level Elevation 2628
Log Measured From Kelly Bushing 5 Ft. Above Perm. Datum
Drilling Measured From Kelly Bushing

K.B. 2633
D.F. G.L. 2628

Date 05/22/2010

Run Number One

Type Log CNL / CDL

Depth Driller 4575

Depth Logger 4574

Bottom Logged Interval 4554

Top Logged Interval 3450

Type Fluid In Hole Chemical

Salinity, PPM CL 3,500

Density 9.2

Level Full

Max. Rec. Temp. F 124

Operating Rig Time 5 Hours

Equipment -- Location 10 Hays

Recorded By Jason Wellbrock

Witnessed By Clayton Erickson

Borehole Record				Casing Record			
Run No	Bit	From	To	Size	Wgt.	From	To
One	12.25	0	217	8.625	24#	0	217
Two	7.875	217	TD				

<<< Fold Here >>>

All interpretations are opinions based on inferences from electrical or other measurements and we cannot and do not guarantee the accuracy or correctness of any interpretation, and we shall not, except in the case of gross or willful negligence on our part, be liable or responsible for any loss, costs, damages, or expenses incurred or sustained by anyone resulting from any interpretation made by any of our officers, agents or employees. These interpretations are also subject to our general terms and conditions set out in our current Price Schedule.

Comments

Thank you for using Log-Tech, Inc.
(785) 625-3858

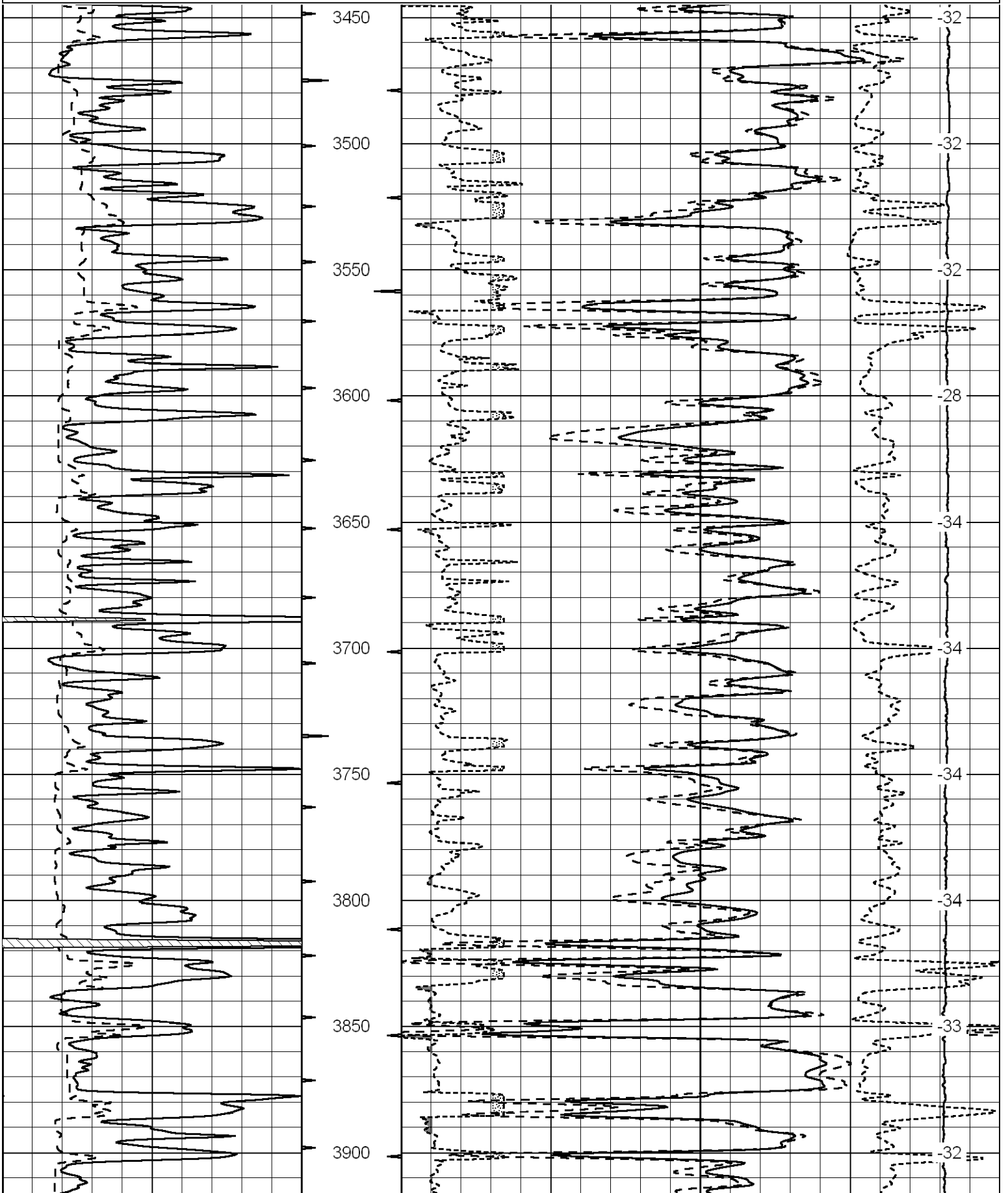
Shields 4E, 1 1/2 N, W Into

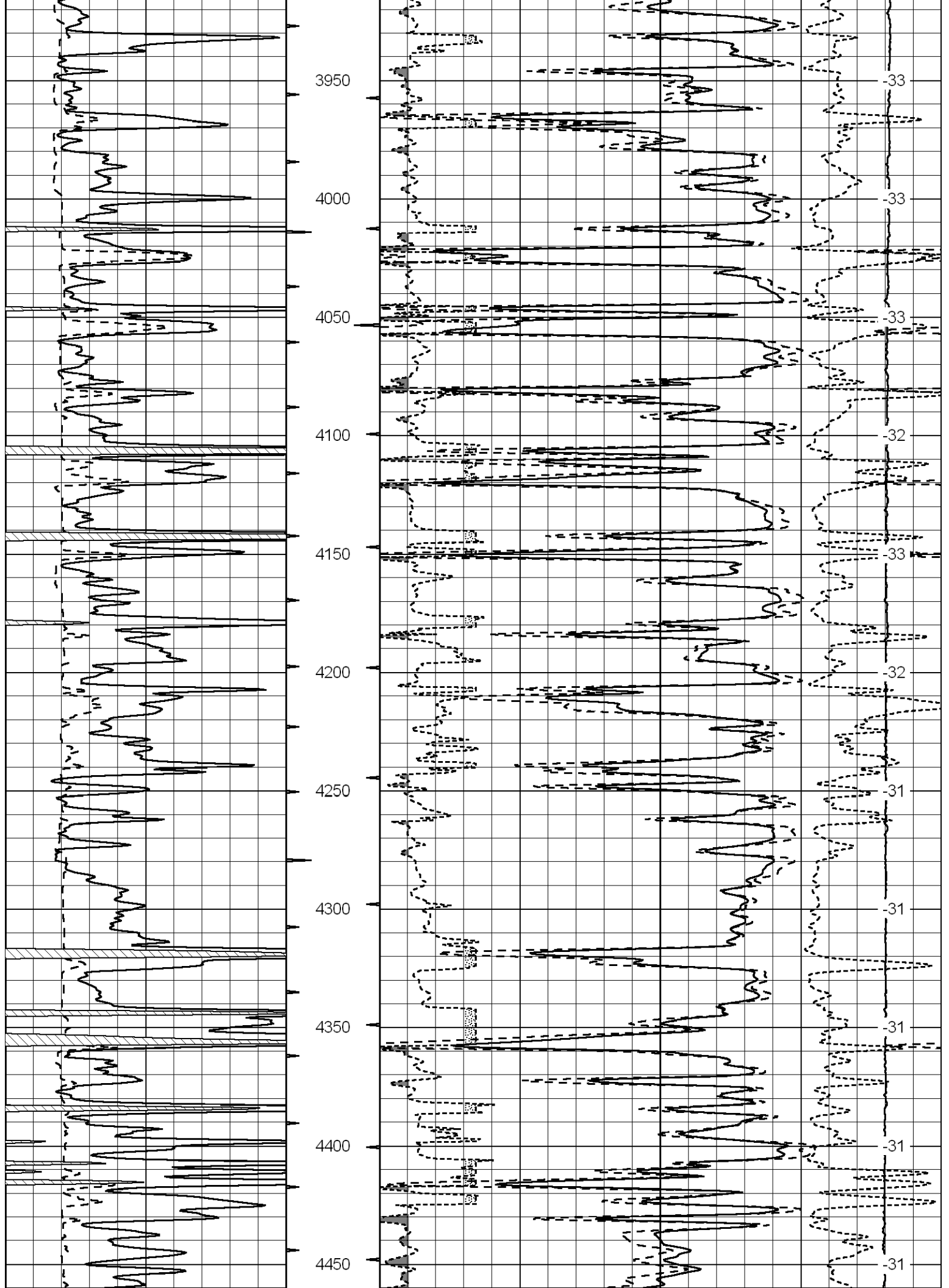
Database File: flathd.db
Dataset Pathname: dil/flat2in
Presentation Format: cdl
Dataset Creation: Sat May 22 11:03:20 2010
Charted by: Depth in Feet scaled 1:600

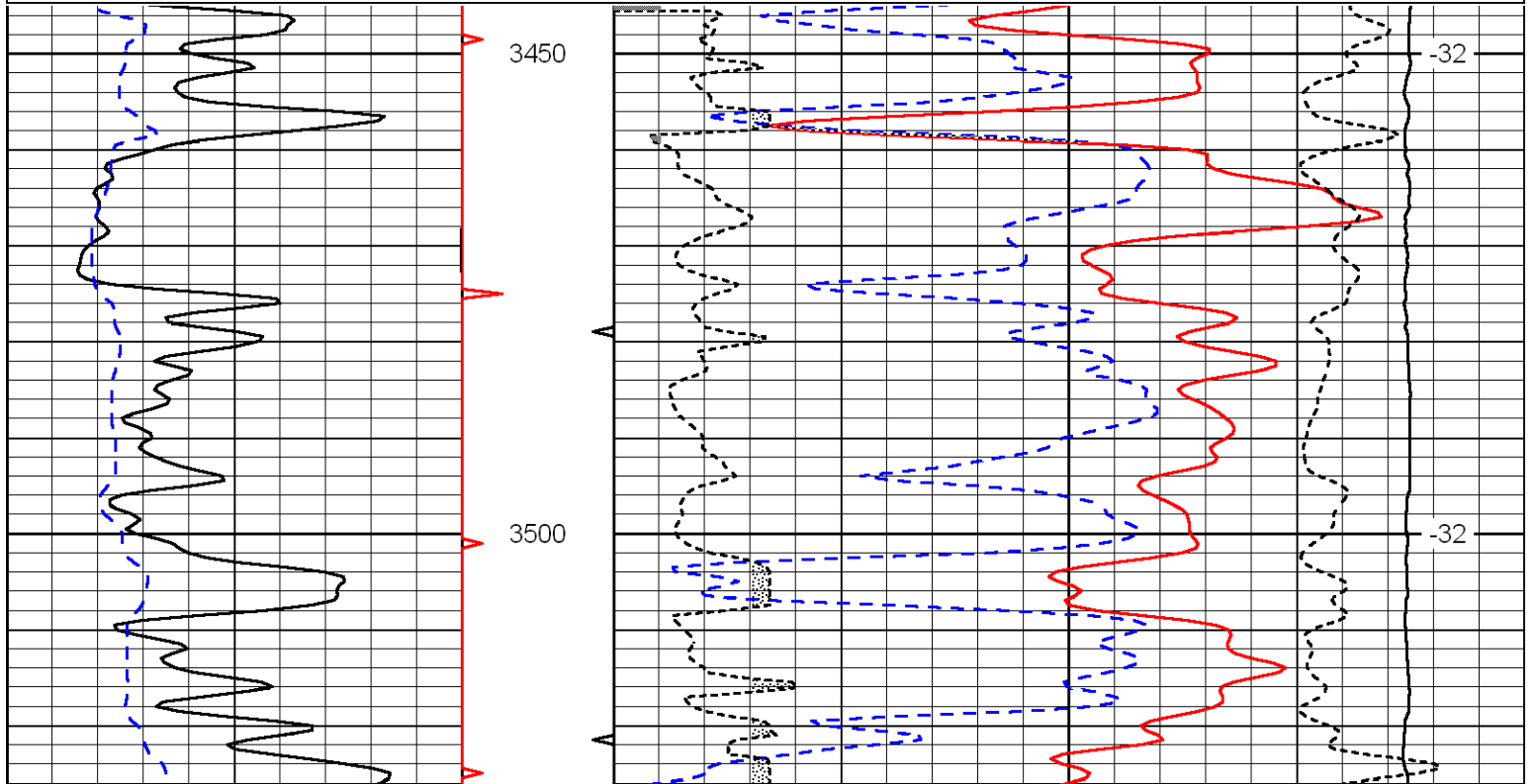
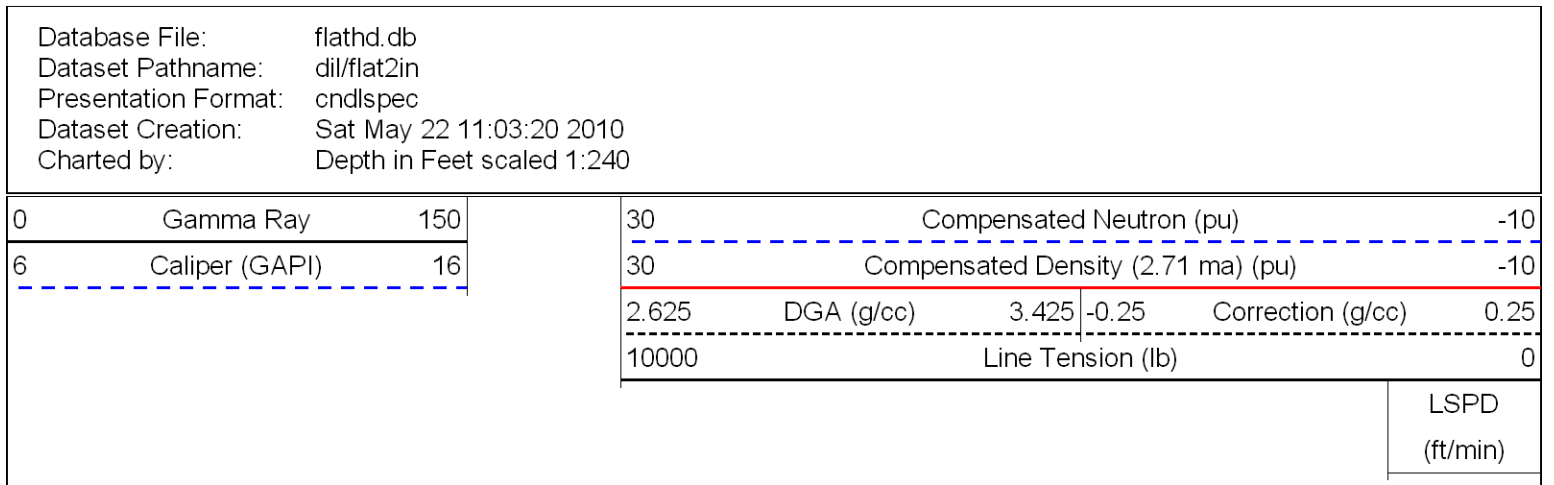
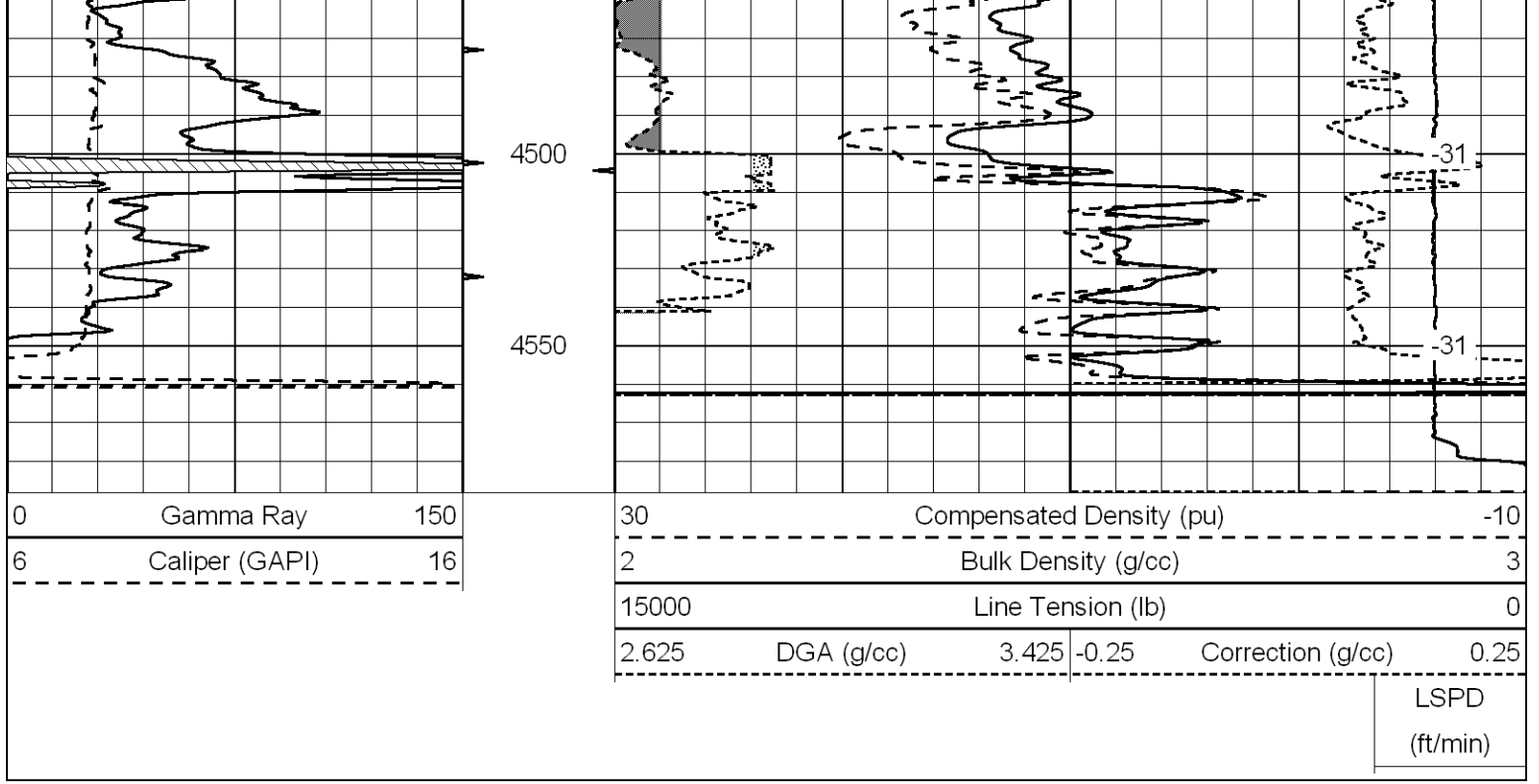
0	Gamma Ray	150
6	Caliper (GAPI)	16

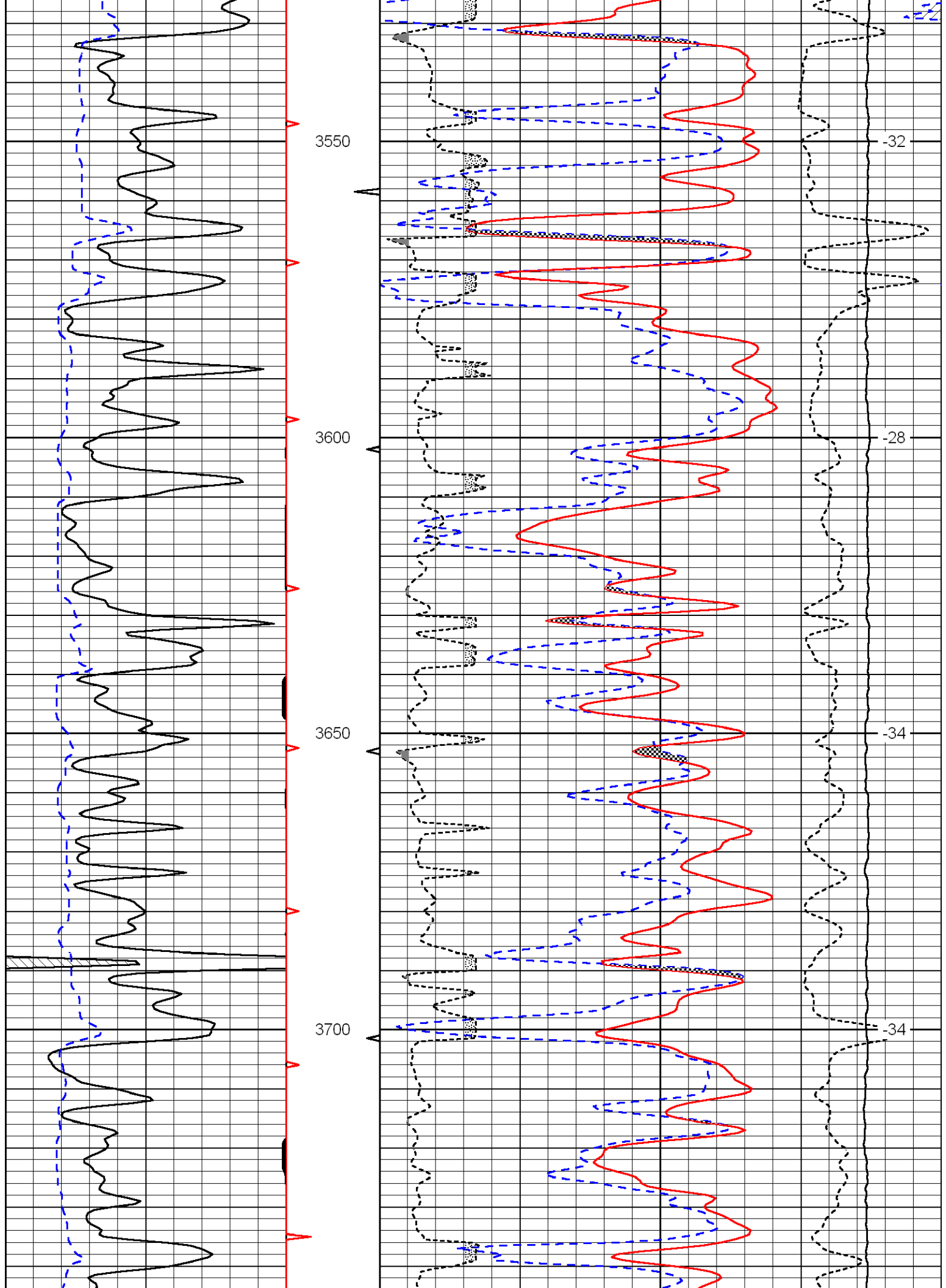
30	Compensated Density (pu)			-10	
2	Bulk Density (g/cc)			3	
15000	Line Tension (lb)			0	
2.625	DGA (g/cc)	3.425	-0.25	Correction (g/cc)	0.25

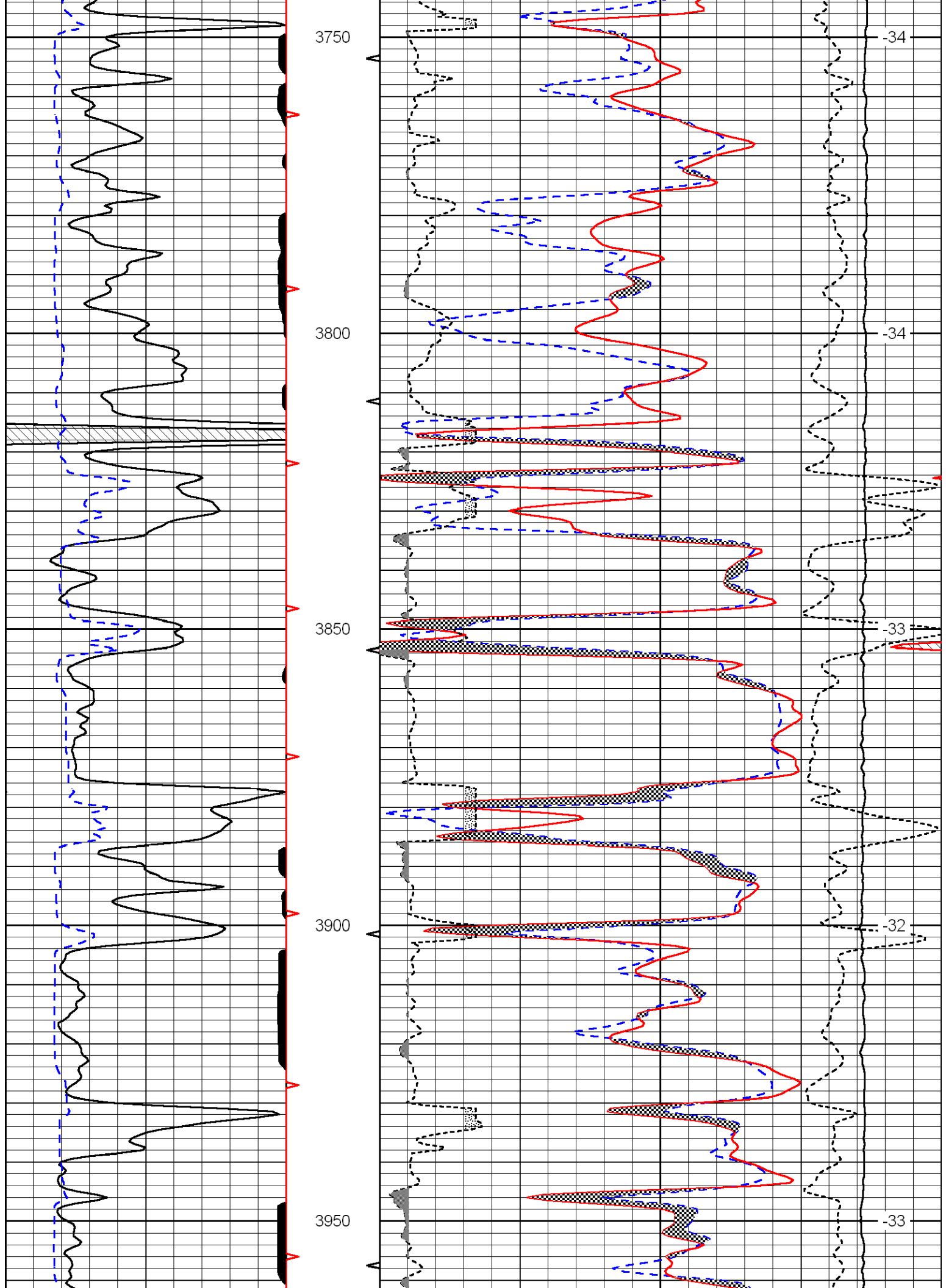
LSPD
(ft/min)

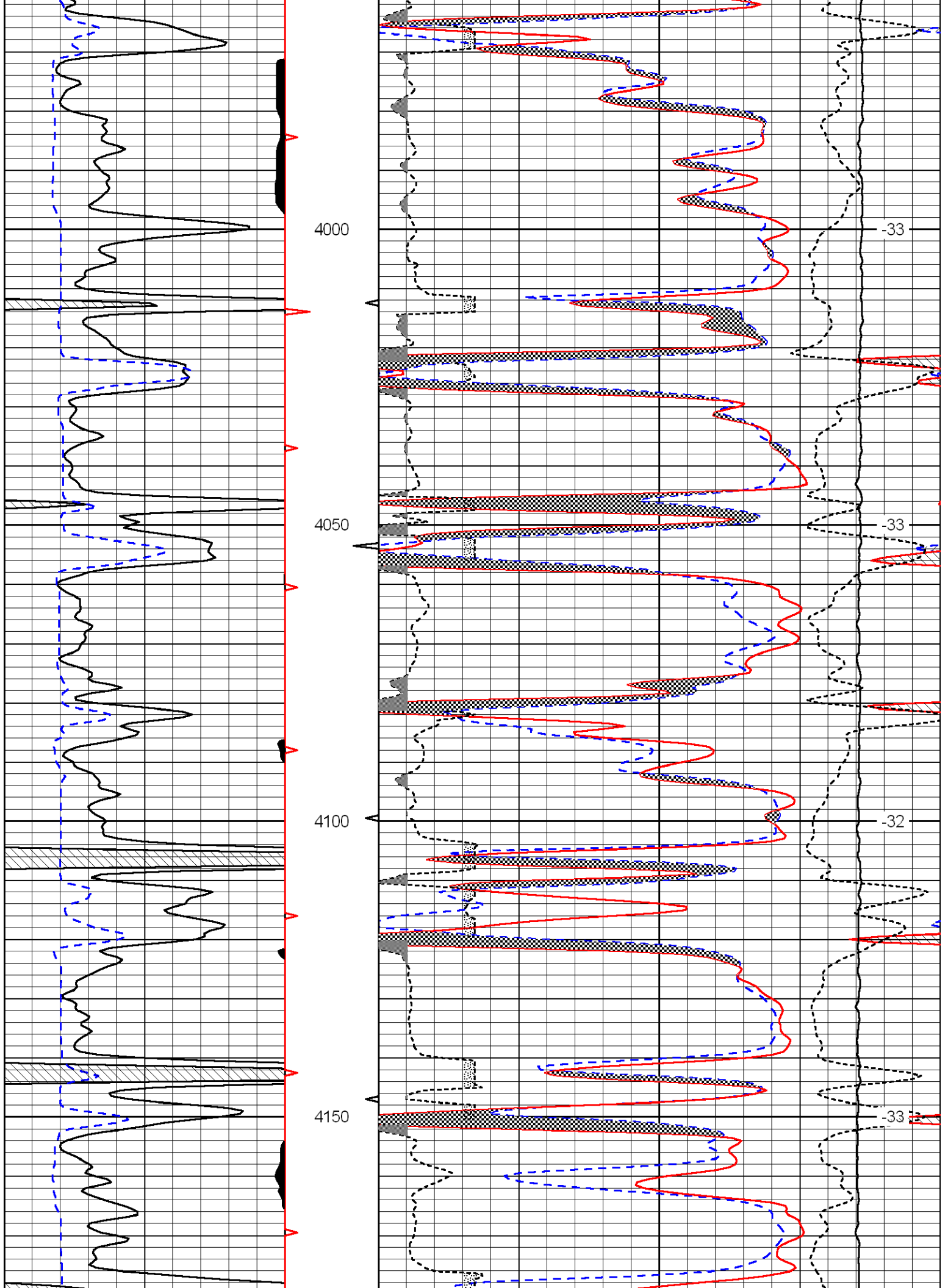


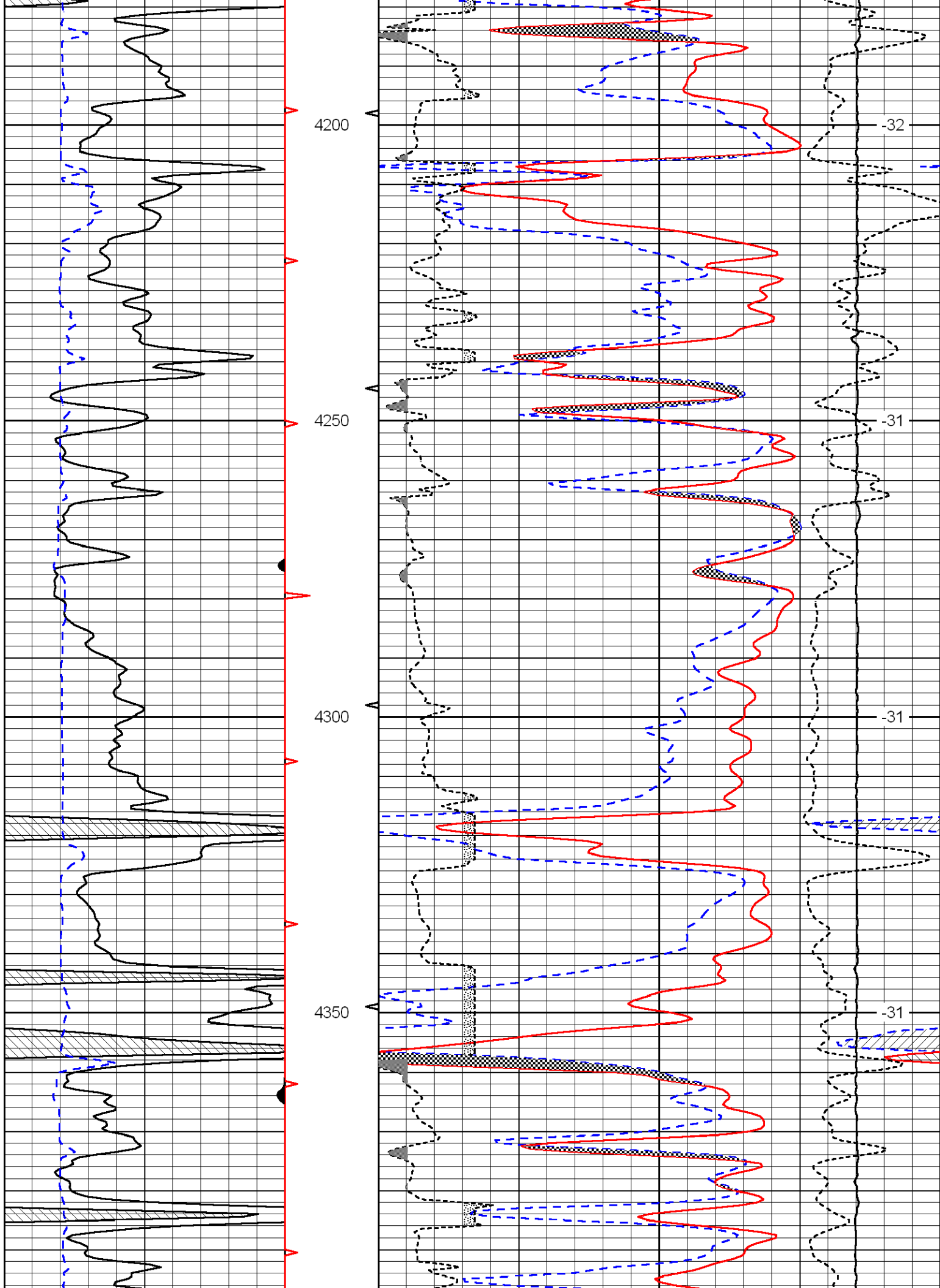


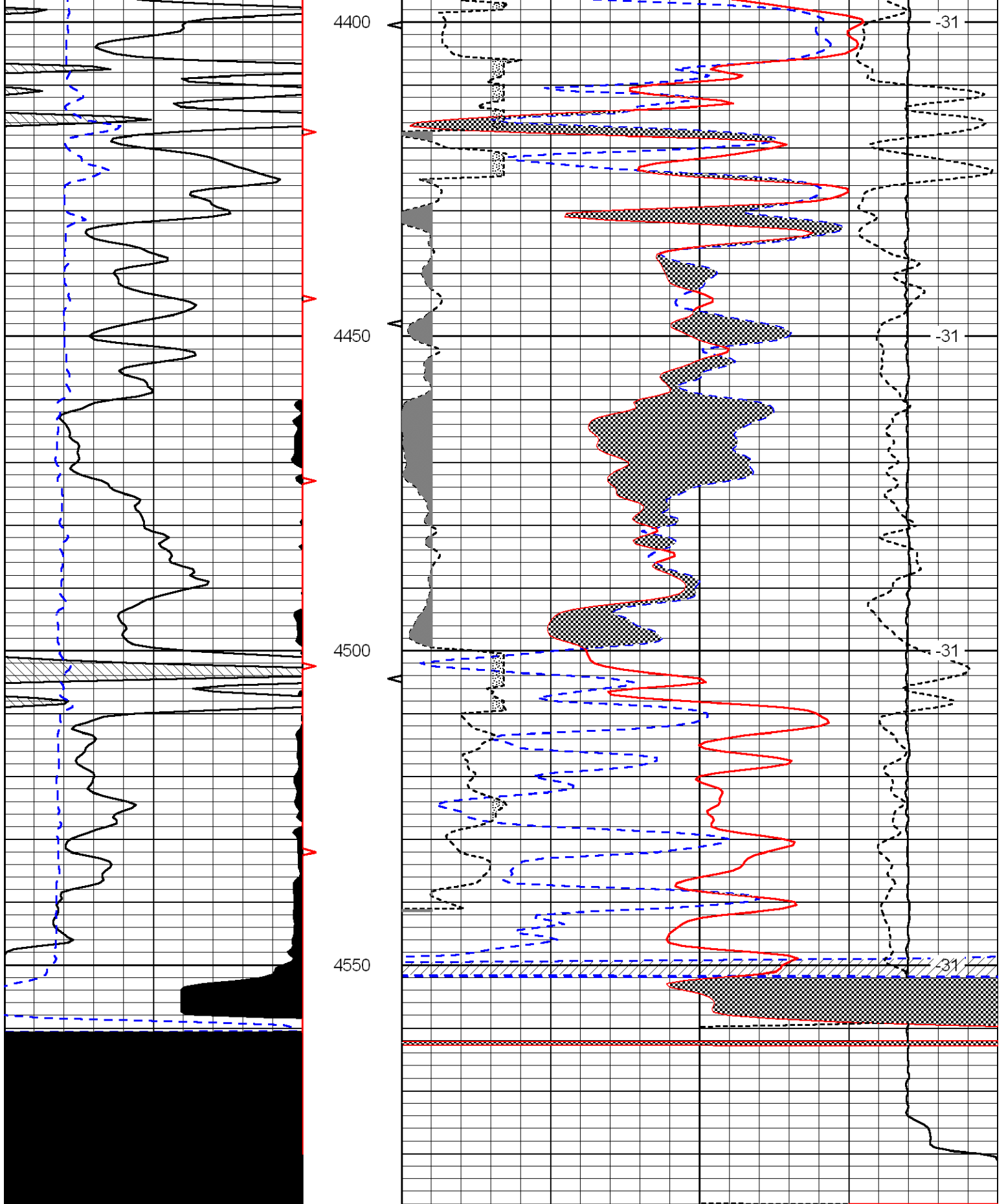












0	Gamma Ray	150
6	Caliper (GAPI)	16

30	Compensated Neutron (pu)	-10	
30	Compensated Density (2.71 ma) (pu)	-10	
2.625	DGA (g/cc)	3.425 -0.25 Correction (g/cc)	0.25
10000	Line Tension (lb)	0	

LSPD
(ft/min)



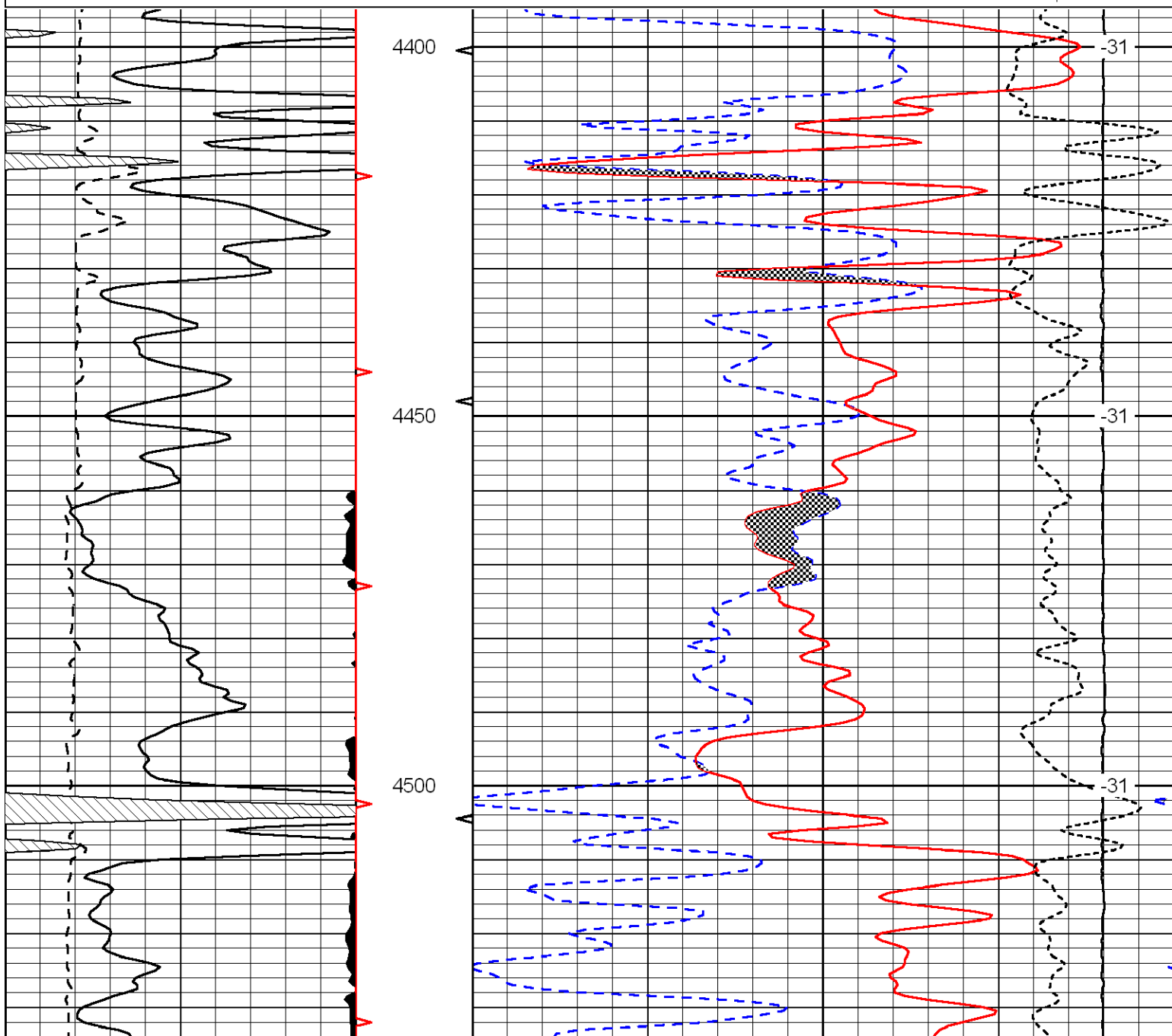
Sandstone Matrix

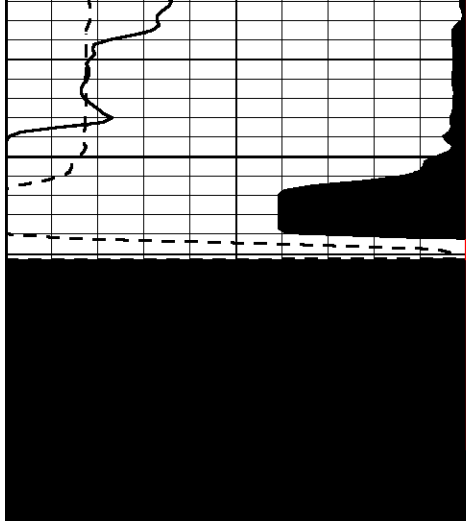
Database File: flatd.db
 Dataset Pathname: dil/sand
 Presentation Format: cndlss
 Dataset Creation: Sat May 22 10:32:44 2010
 Charted by: Depth in Feet scaled 1:240

0	Gamma Ray	150
6	Caliper (GAPI)	16

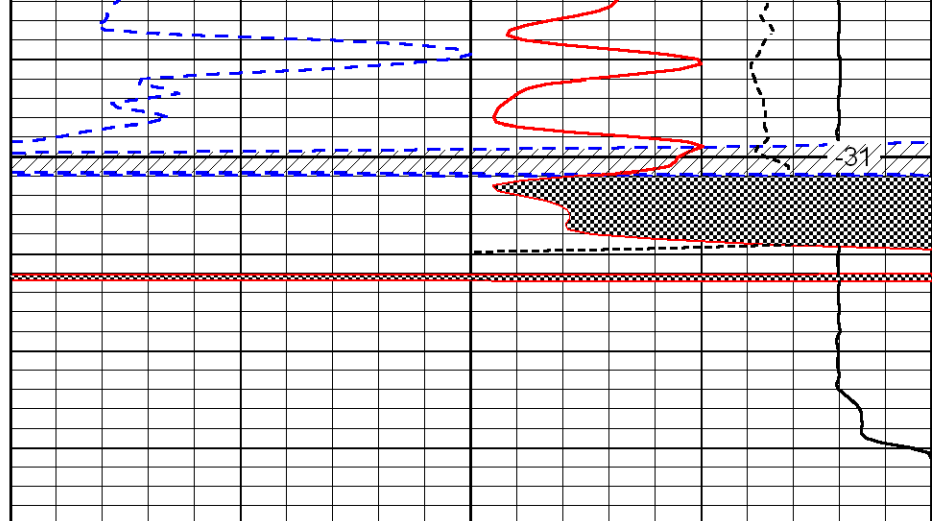
30	Compensated Neutron (pu)	-10
30	Compensated Density (2.65 pma) (pu)	-10
15000	Line Tension (lb)	0
-0.25	Correction (g/cc)	0.25

LSPD
(ft/min)





4550



0	Gamma Ray	150
6	Caliper (GAPI)	16

30	Compensated Neutron (pu)	-10
30	Compensated Density (2.65 pma) (pu)	-10
15000	Line Tension (lb)	0

-0.25	Correction (g/cc)	0.25
-------	-------------------	------

LSPD
(ft/min)