



**Borehole Compensated
Sonic Log**

DIGITAL LOG (785) 625-3858

API No. 15-109-20,909-00-00	Company Murfin Drilling Co., Inc.	Location 2700' FEL & 1100' FNL	Other Services CNL/CDL MEL/DIL
	Well J & J Kuhlman No. 2-4		
	Field Wildcat		
	County Logan		
		State Kansas	
	Sec: 4	Twp: 13S	Rge: 32W
Permanent Datum Log Measured From Drilling Measured From	Ground Level Kelly Bushing Kelly Bushing	Elevation 3041 10 Ft. Above Perm. Datum	K.B. 3051 D.F. G.L. 3041

Date	05/16/2010
Run Number	Two
Type Log	BHC Sonic
Depth Driller	4740
Depth Logger	4739
Bottom Logged Interval	4728
Top Logged Interval	200
Type Fluid In Hole	Chemical
Salinity, PPM CL	3,200
Density	9.1
Level	Full
Max. Rec. Temp. F	125
Operating Rig Time	5 Hours
Equipment -- Location	17 Hays
Recorded By	Jason Wellbrock
Witnessed By	Tom Funk

Borehole Record		Casing Record					
Run No	Bit	From	To	Size	Wgt.	From	To
One	12.25	00	227	8.625	23#	00	227
Two	7.875	227	TD				

<<< Fold Here >>>

All interpretations are opinions based on inferences from electrical or other measurements and we cannot and do not guarantee the accuracy or correctness of any interpretation, and we shall not, except in the case of gross or willful negligence on our part, be liable or responsible for any loss, costs, damages, or expenses incurred or sustained by anyone resulting from any interpretation made by any of our officers, agents or employees. These interpretations are also subject to our general terms and conditions set out in our current Price Schedule.

Comments

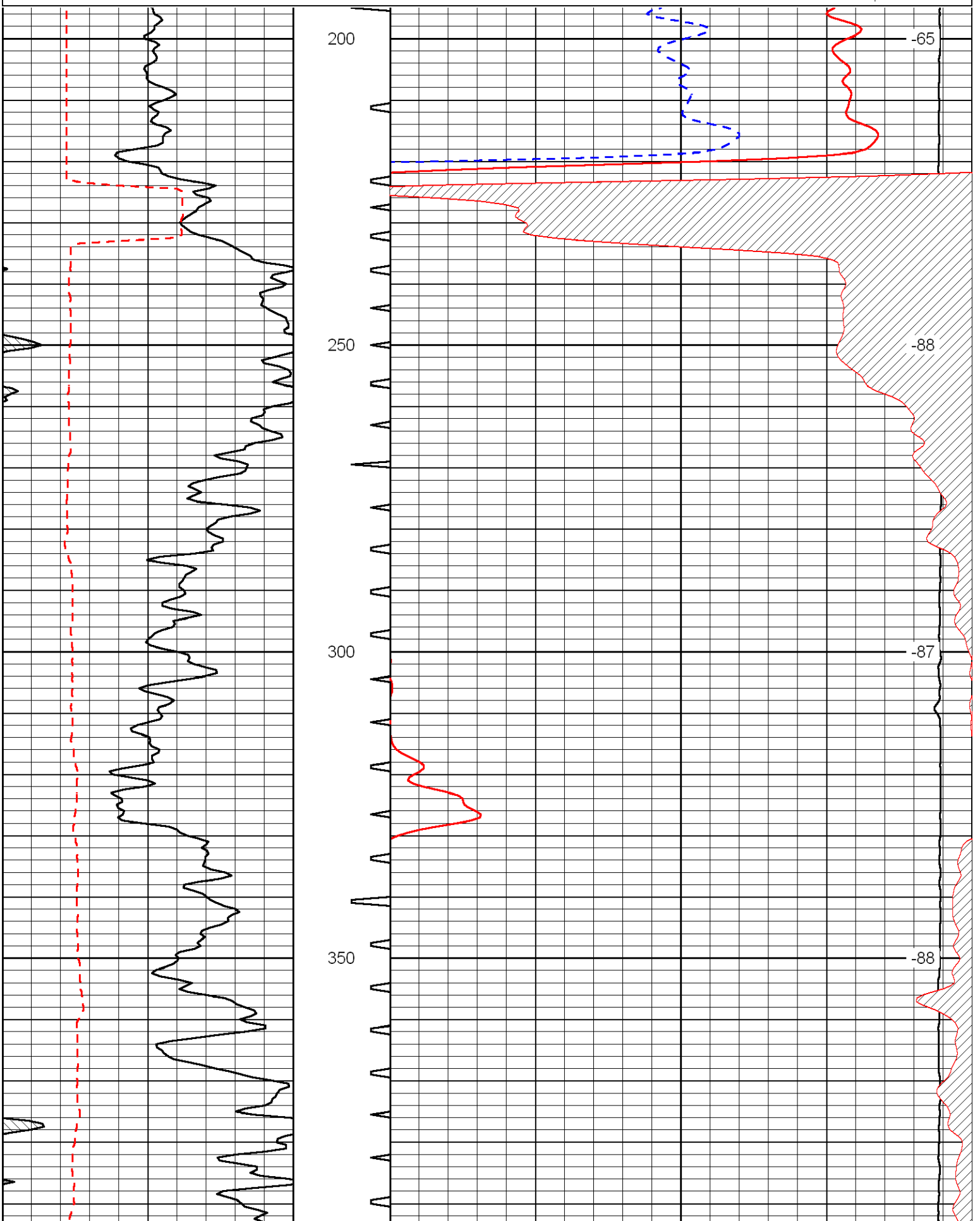
Thank you for using Log-Tech, Inc.
(785) 625-3858

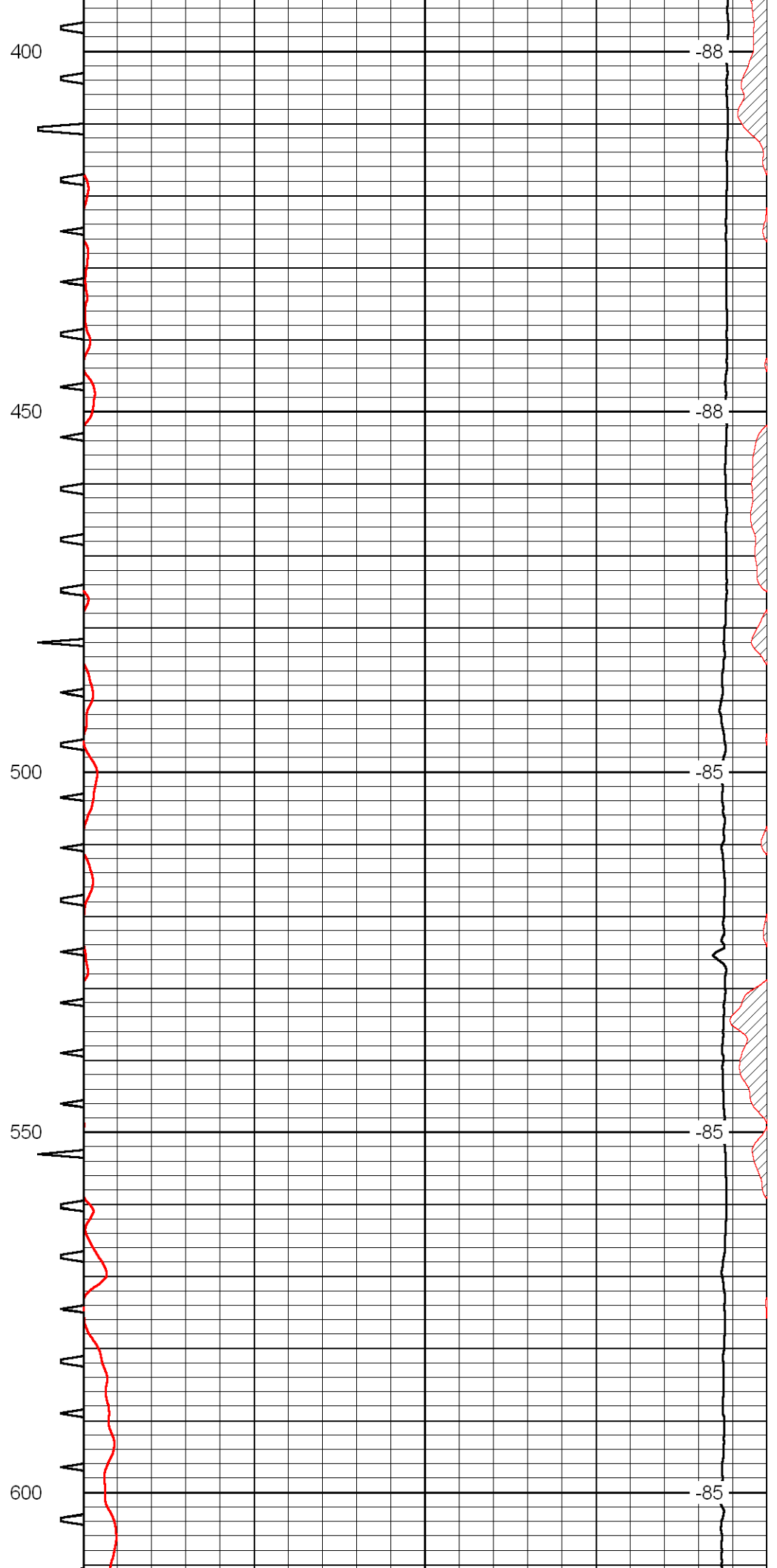
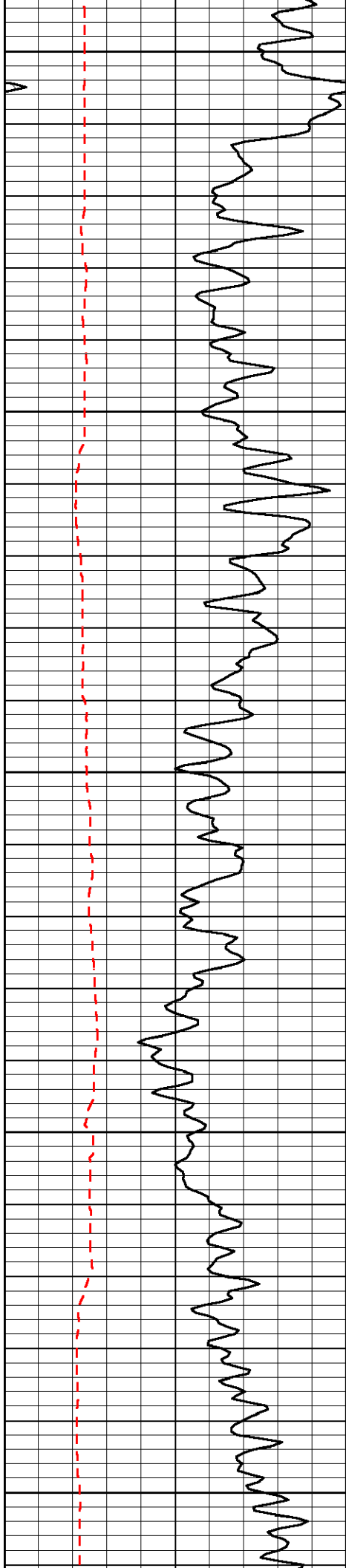
Oakley S to Gove rd, 1 1/2 W, S Into

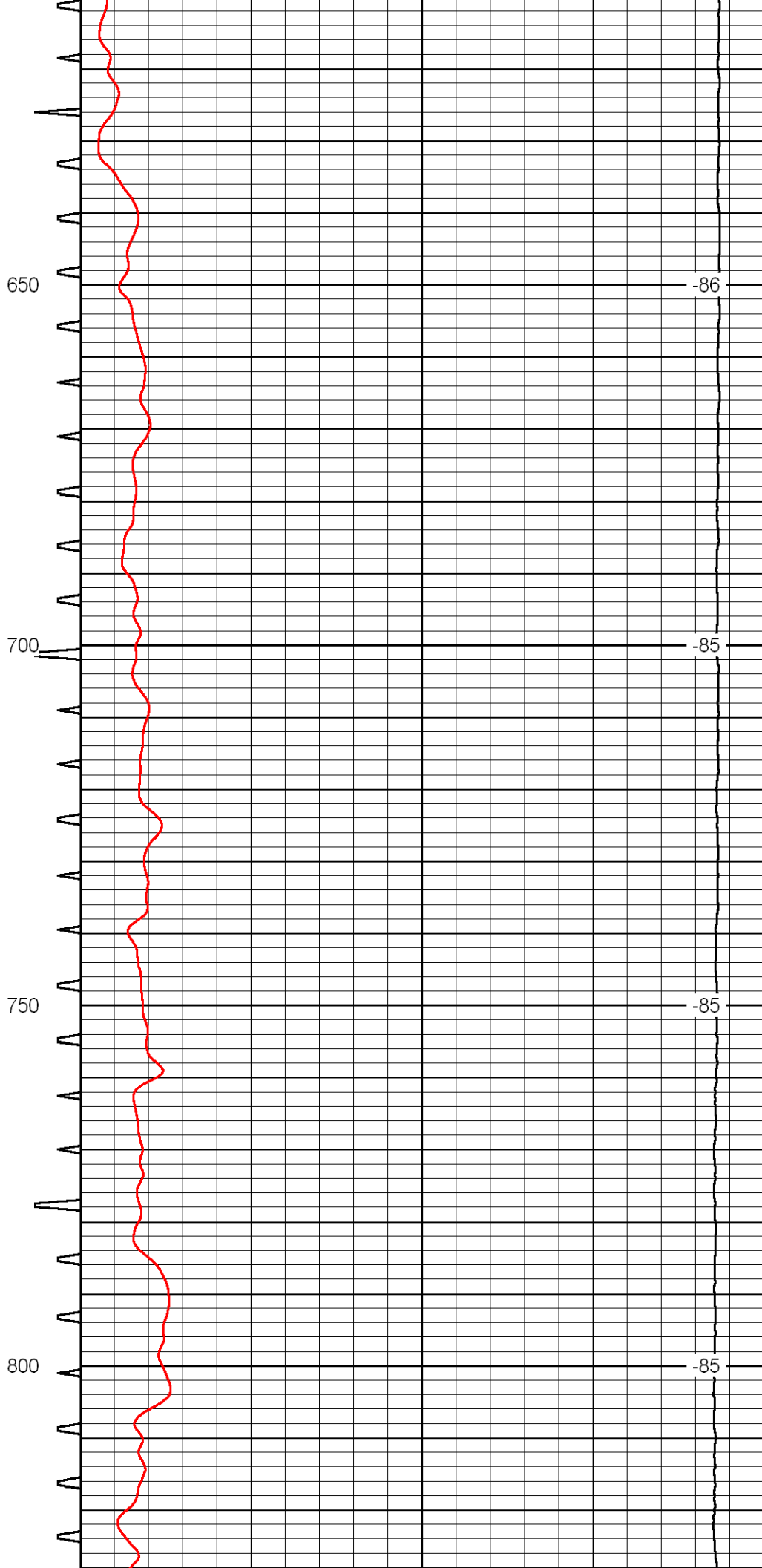
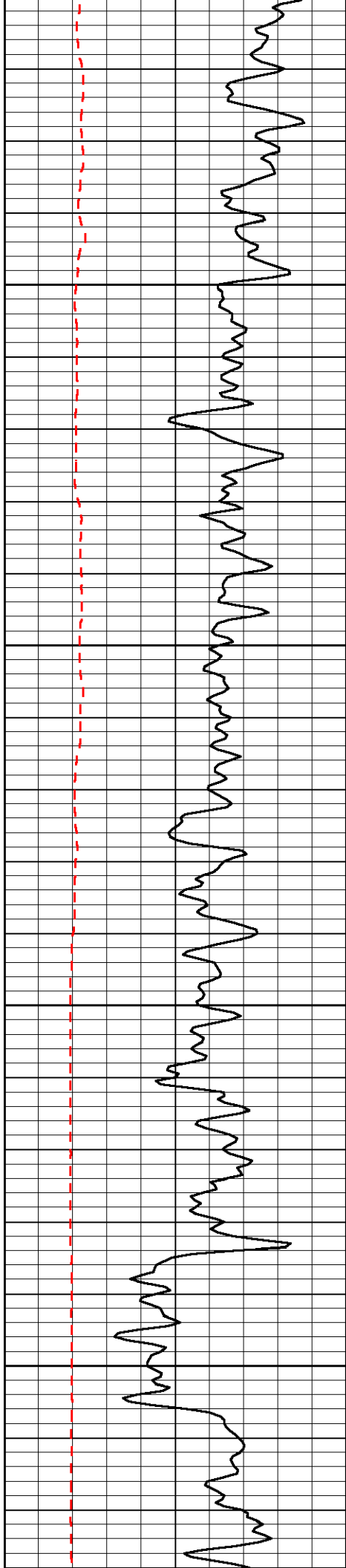
Database File: murfhd.db
 Dataset Pathname: dil/mf2in
 Presentation Format: sonic
 Dataset Creation: Sun May 16 15:18:48 2010
 Charted by: Depth in Feet scaled 1:240

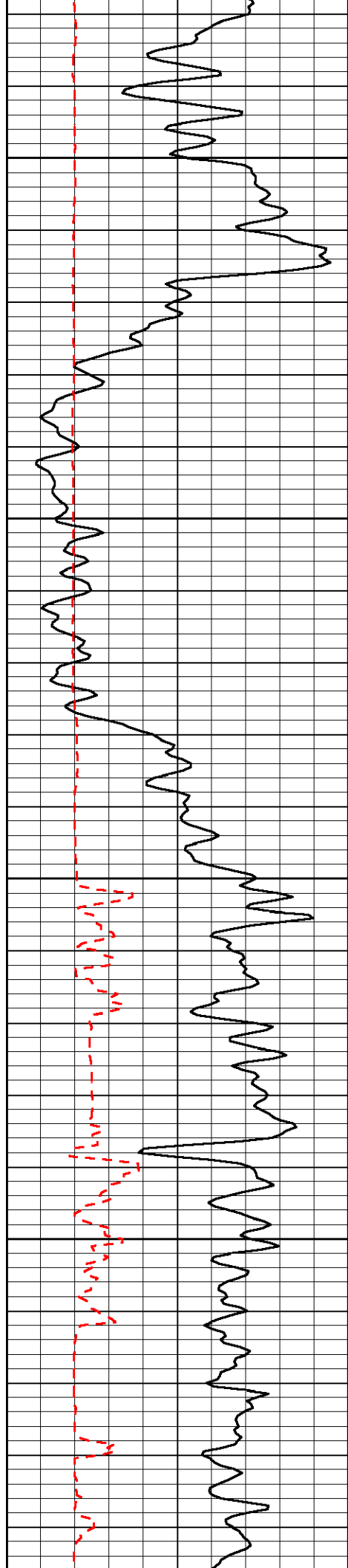
0	Gamma Ray	150	Sonic Int	140	Delta Time (usec/ft)	40
150	Gamma Ray	300	5	0	Sonic Porosity	-10
6	dCAL (GAPI)	16		15000	LTEN (lb)	0

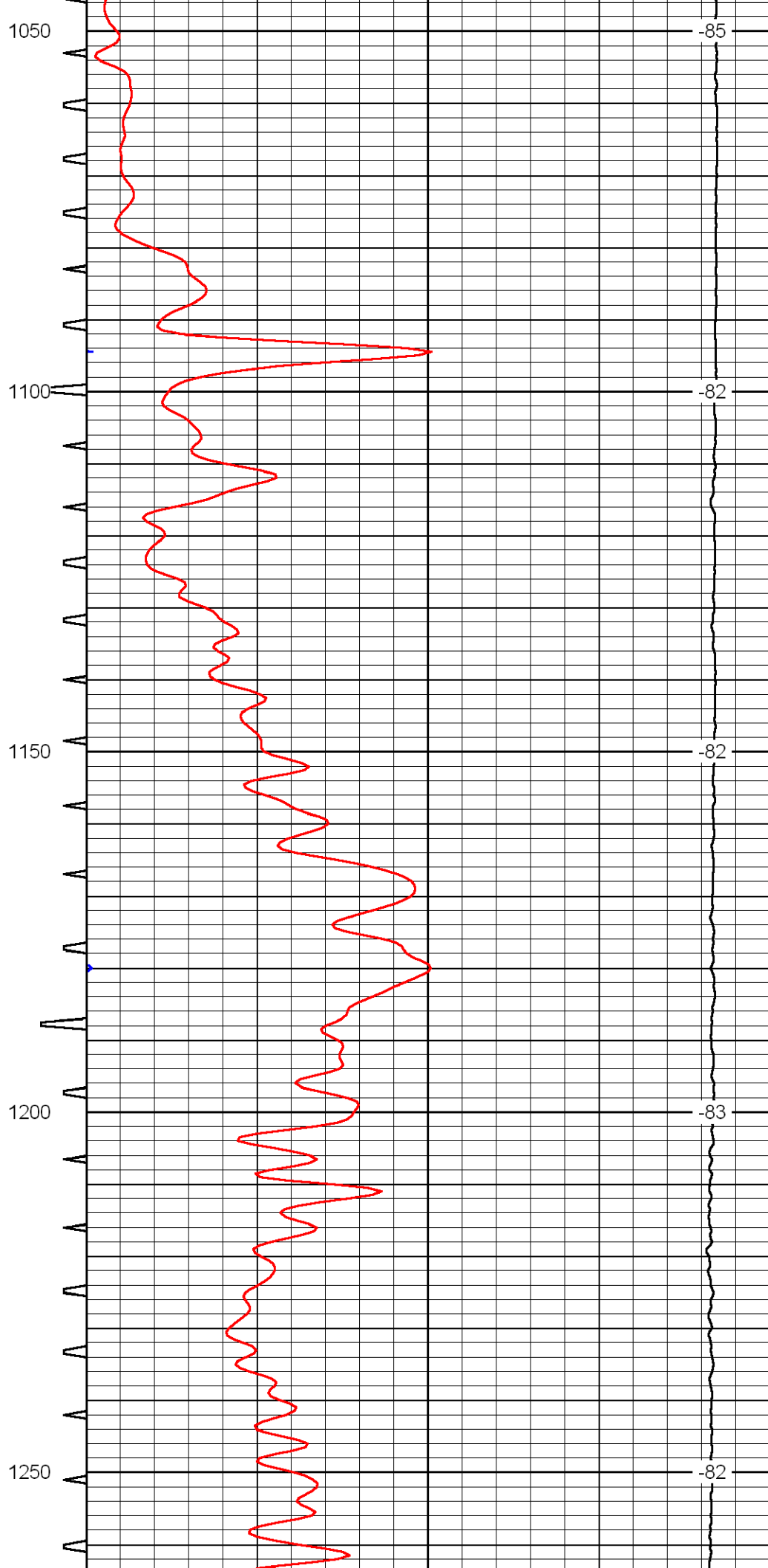
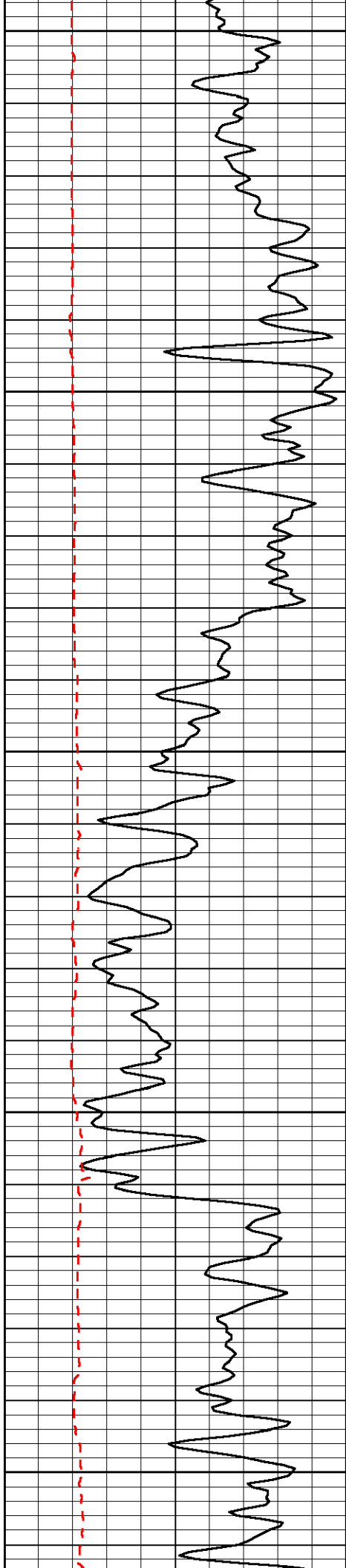
LSPD

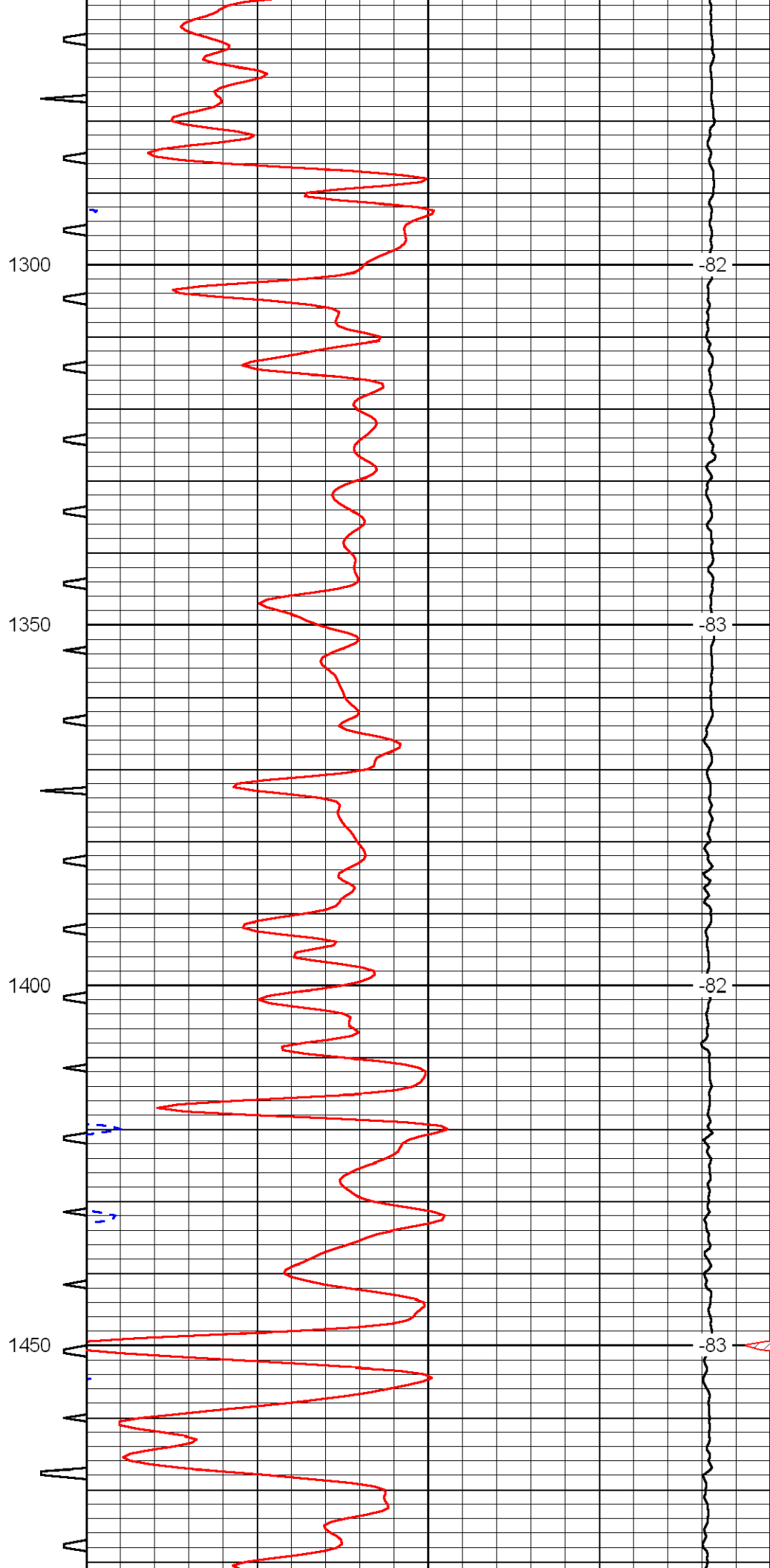
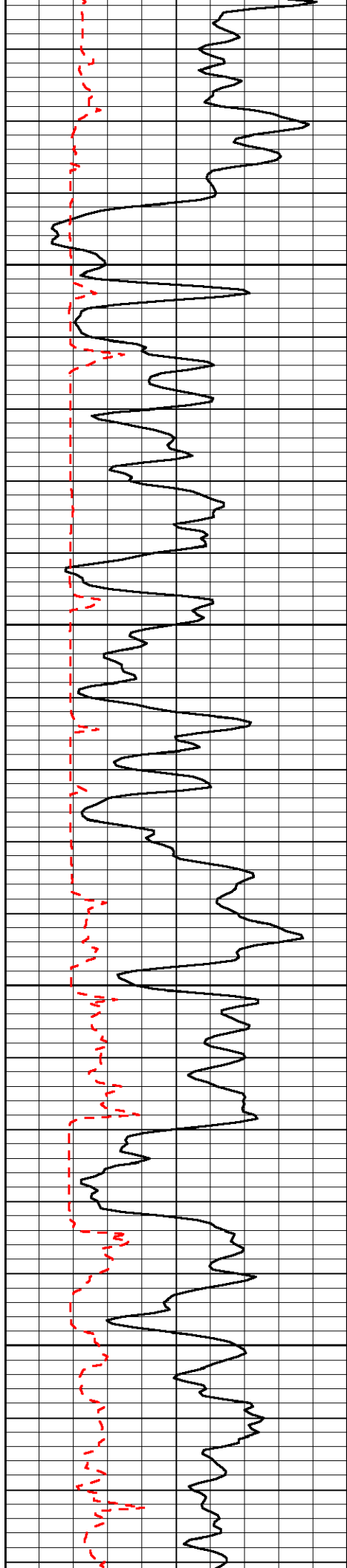


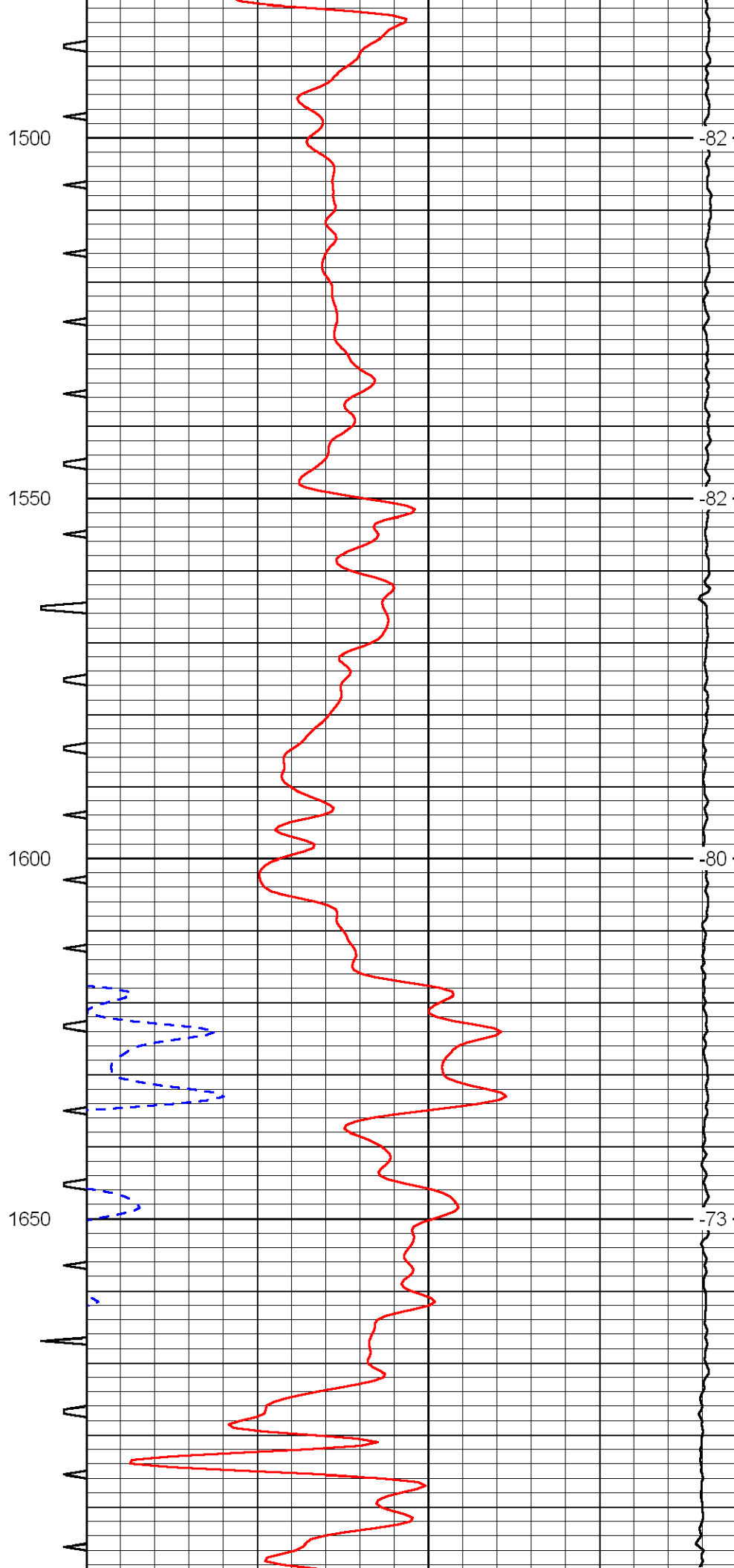
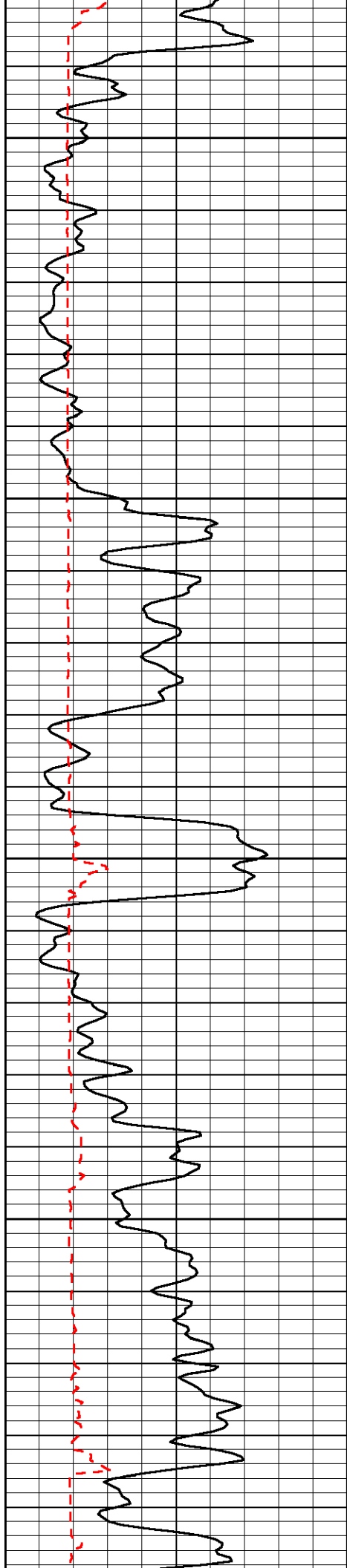


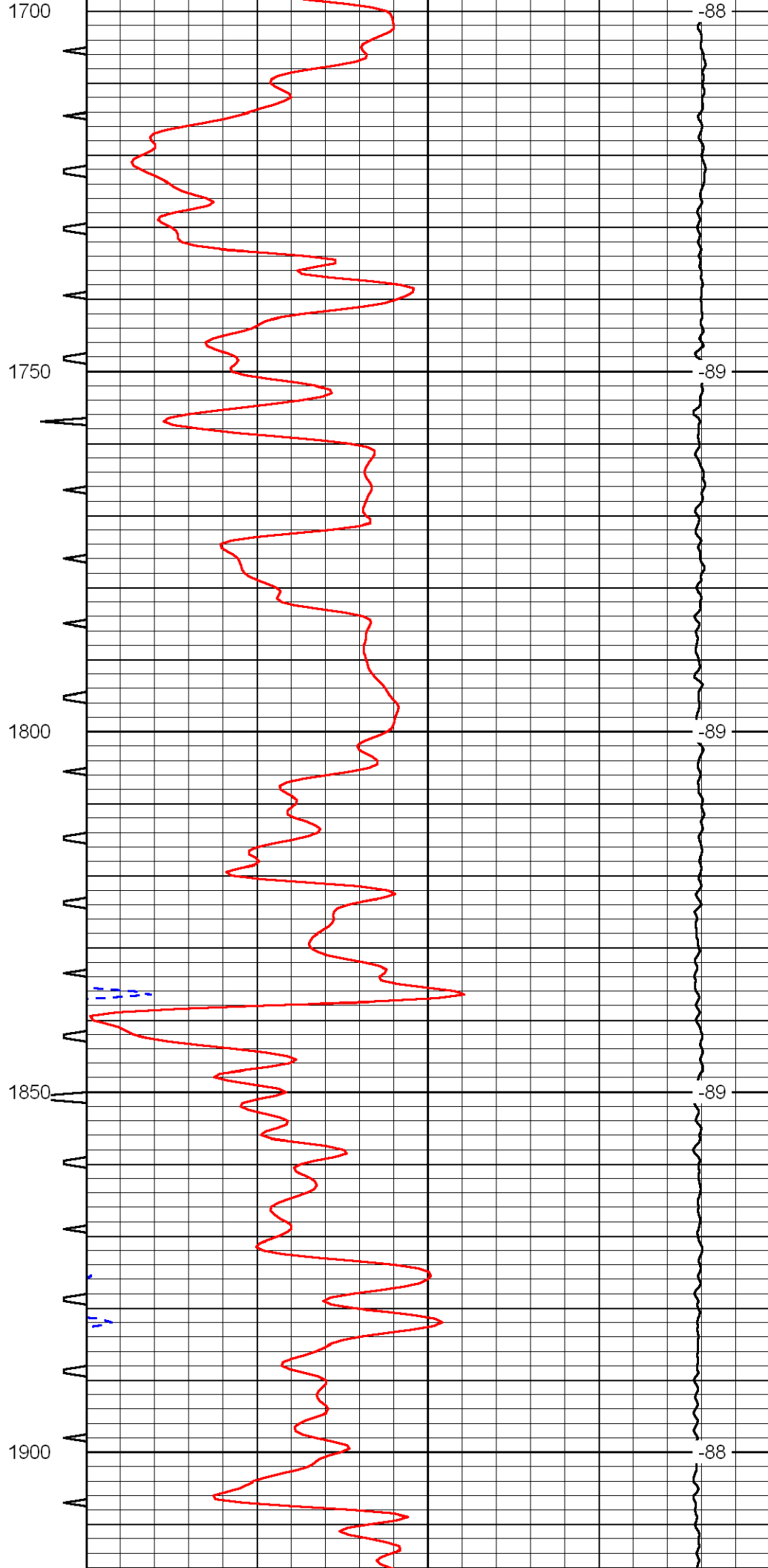
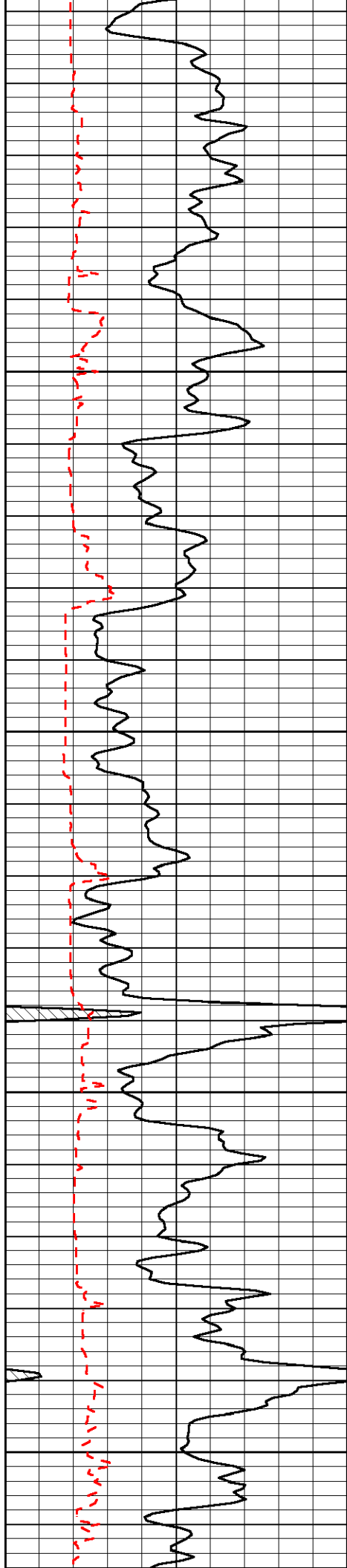


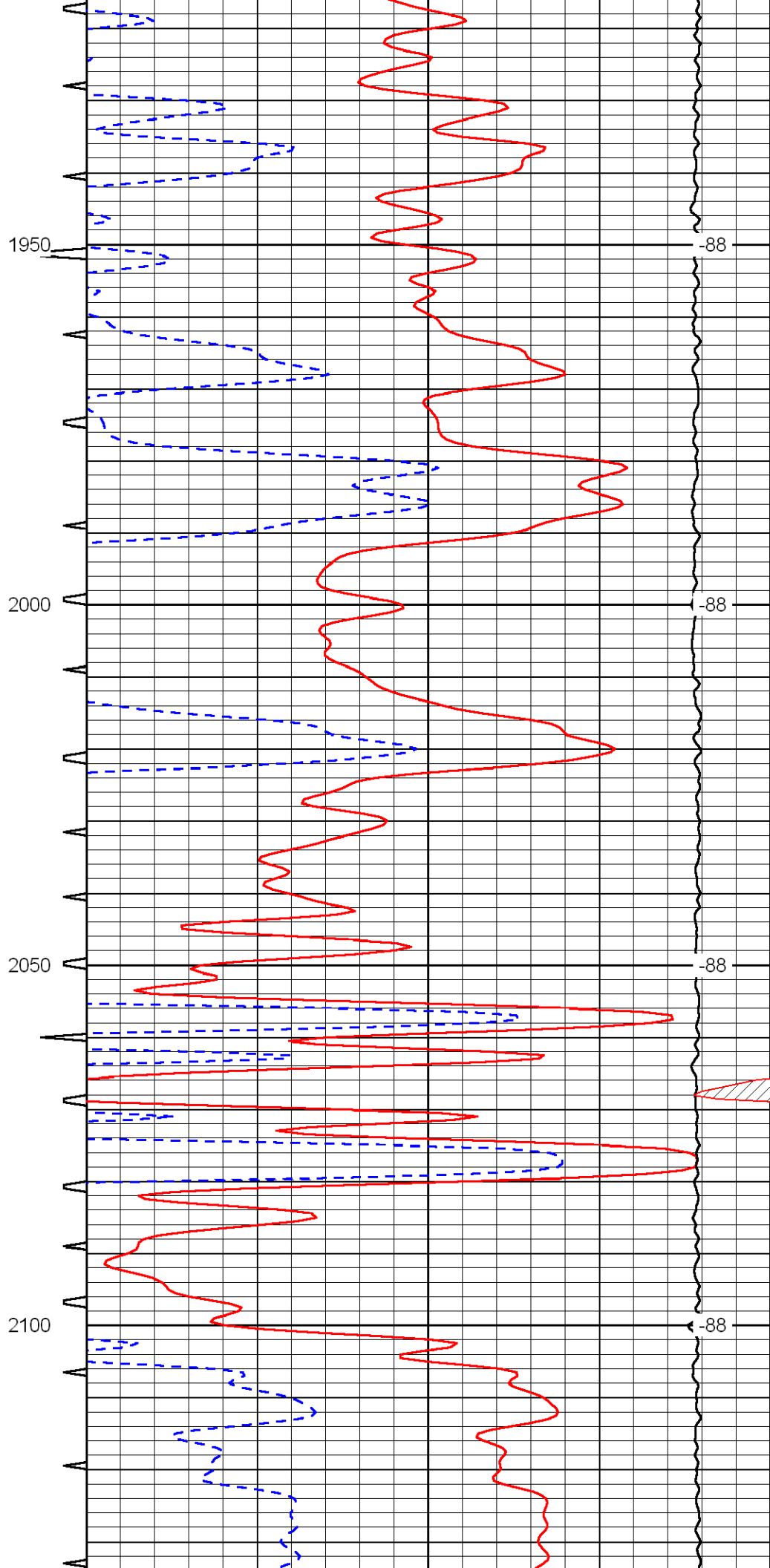
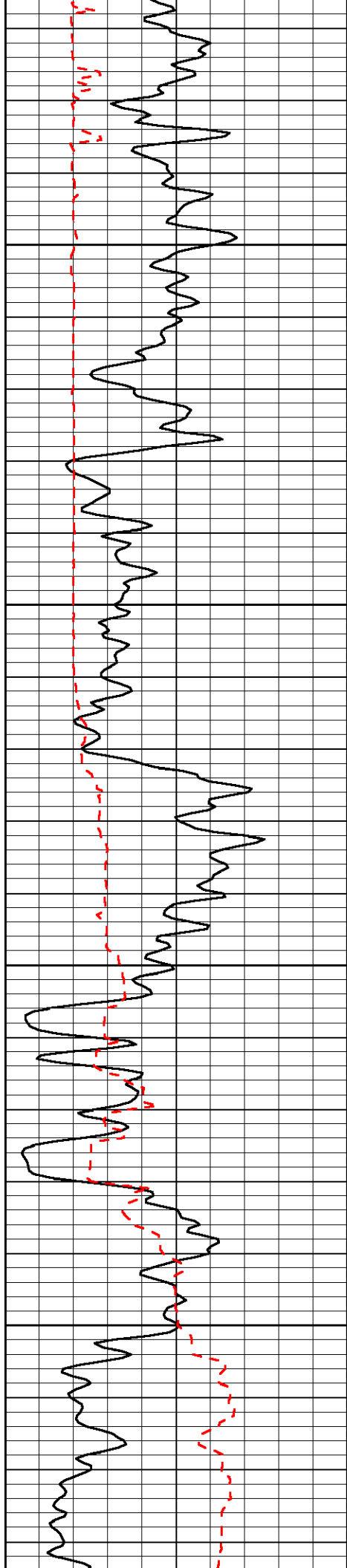


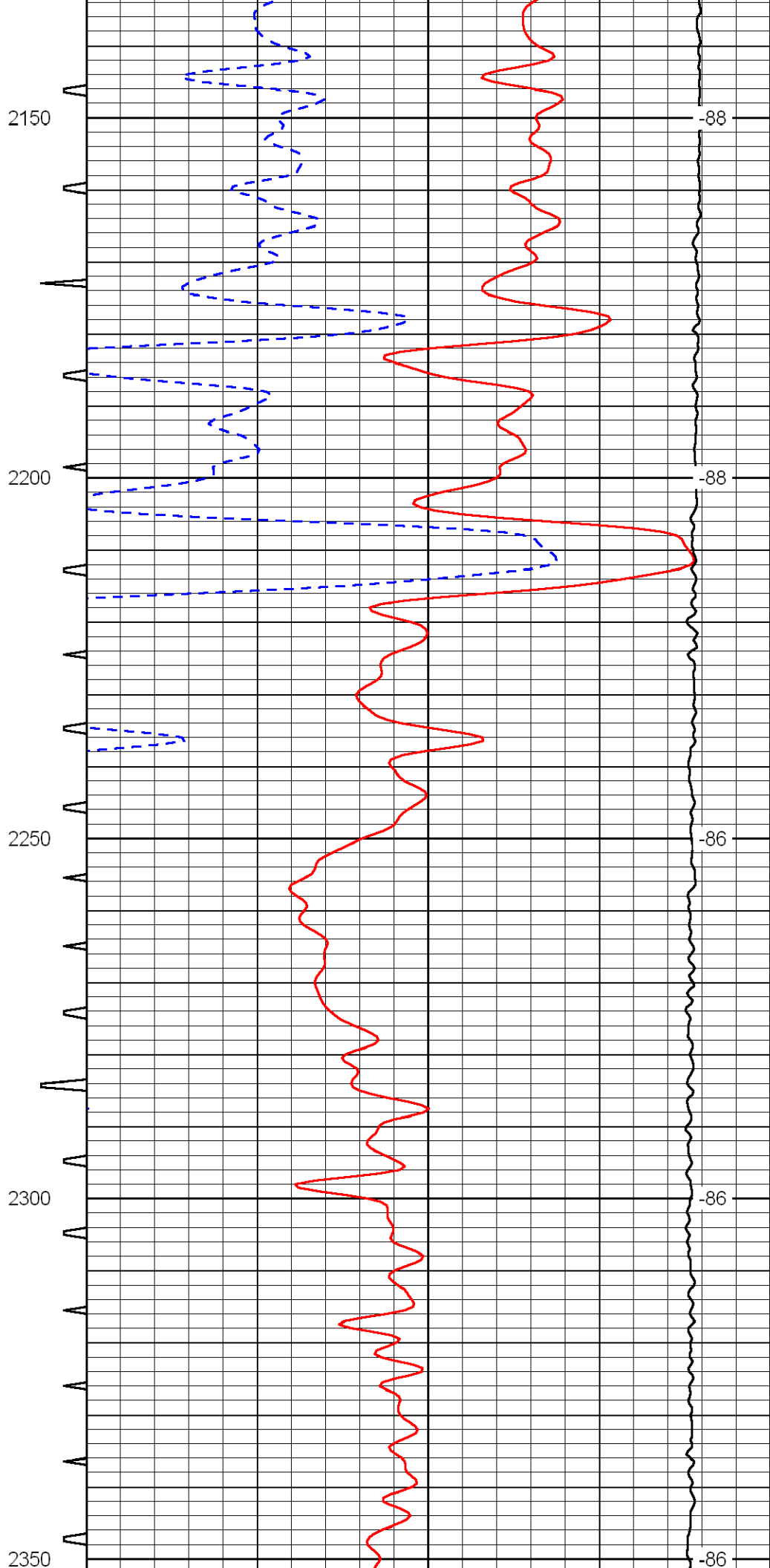
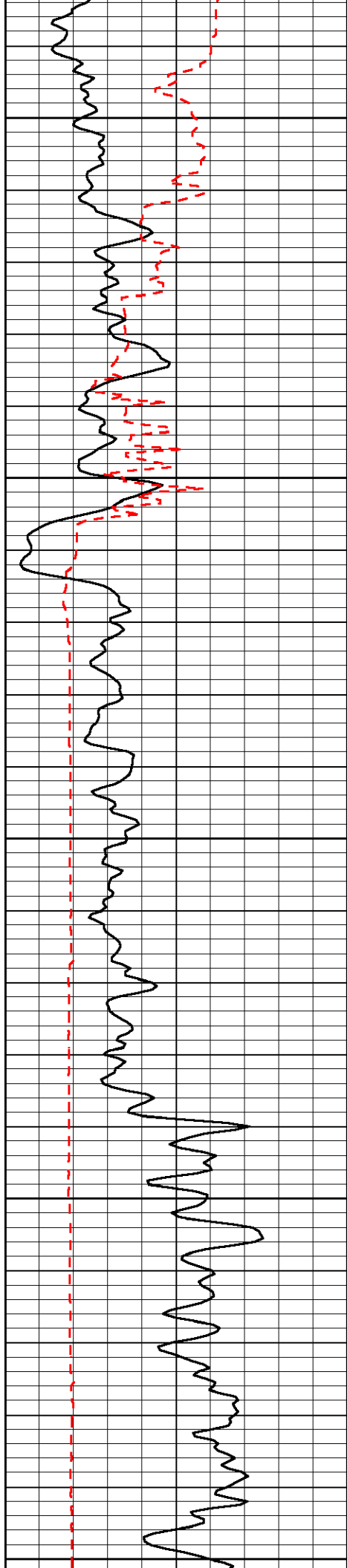


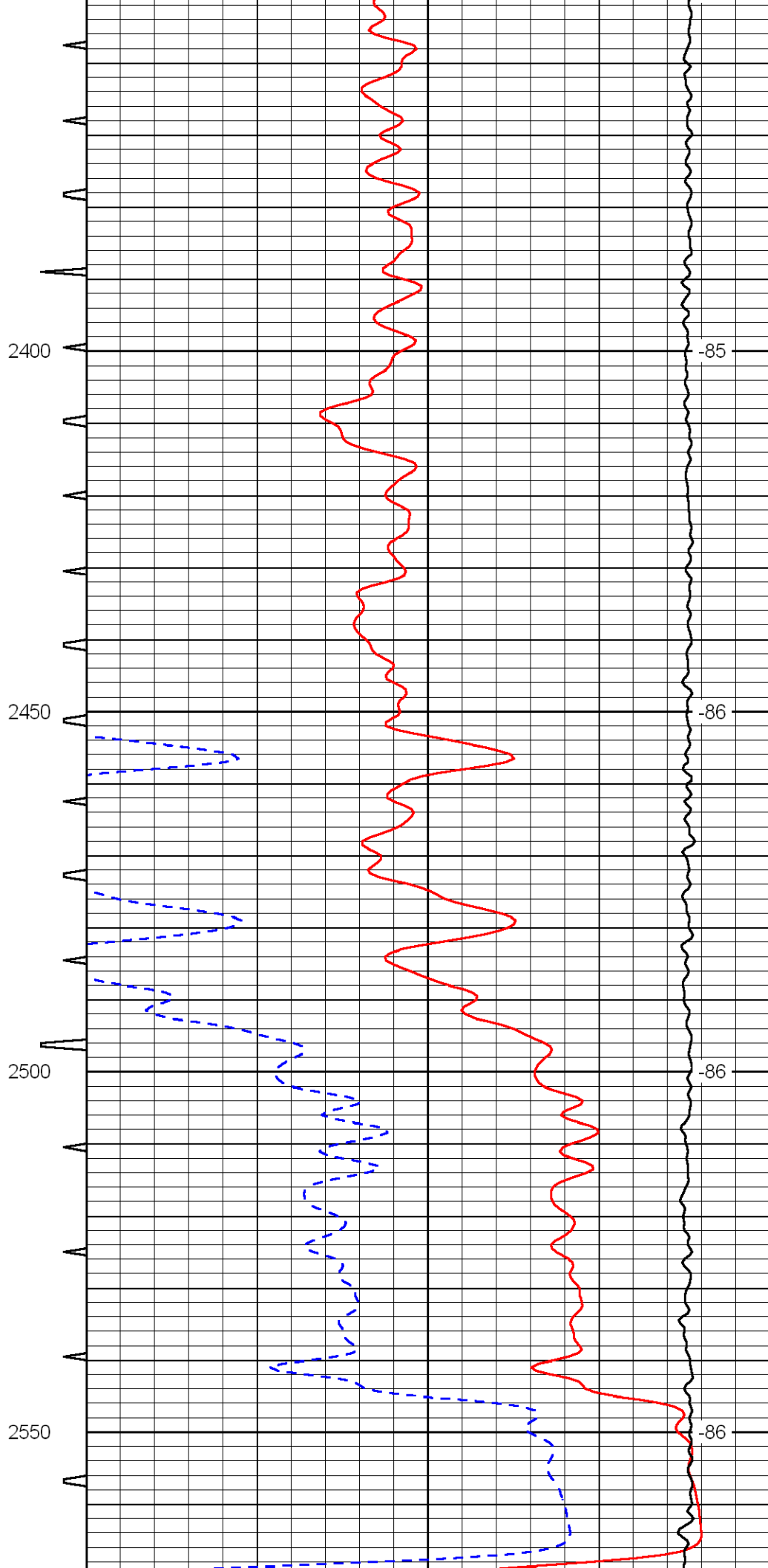
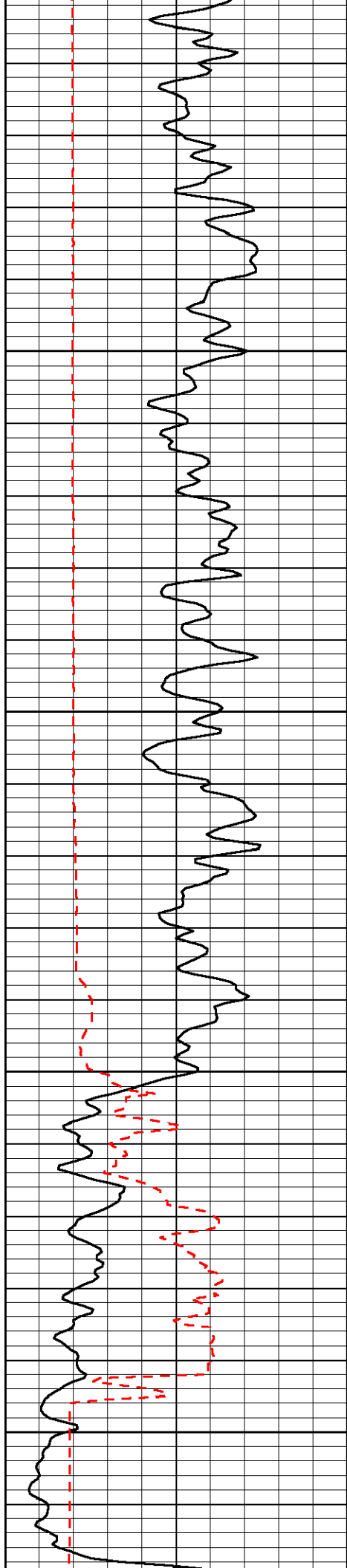


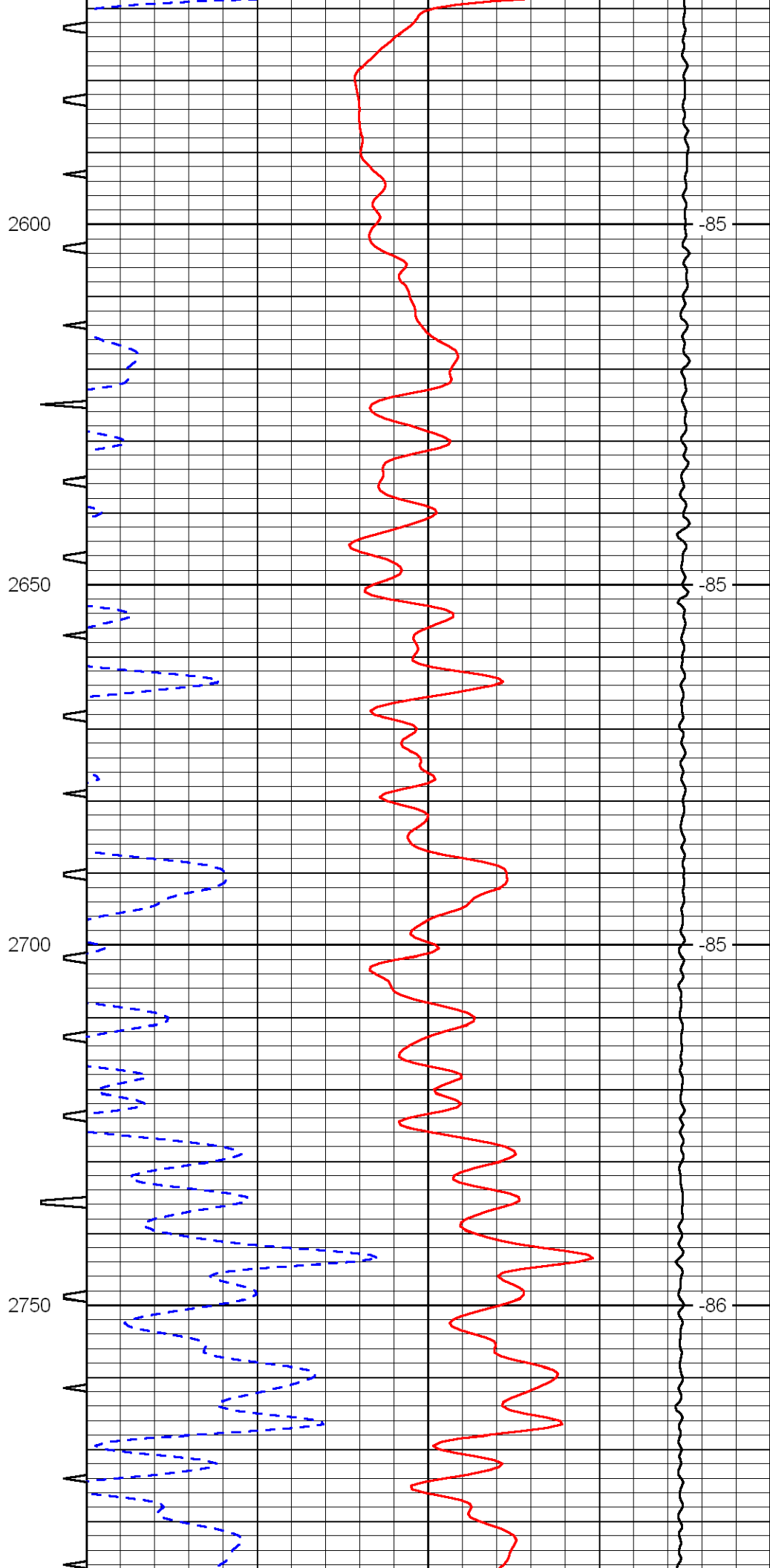
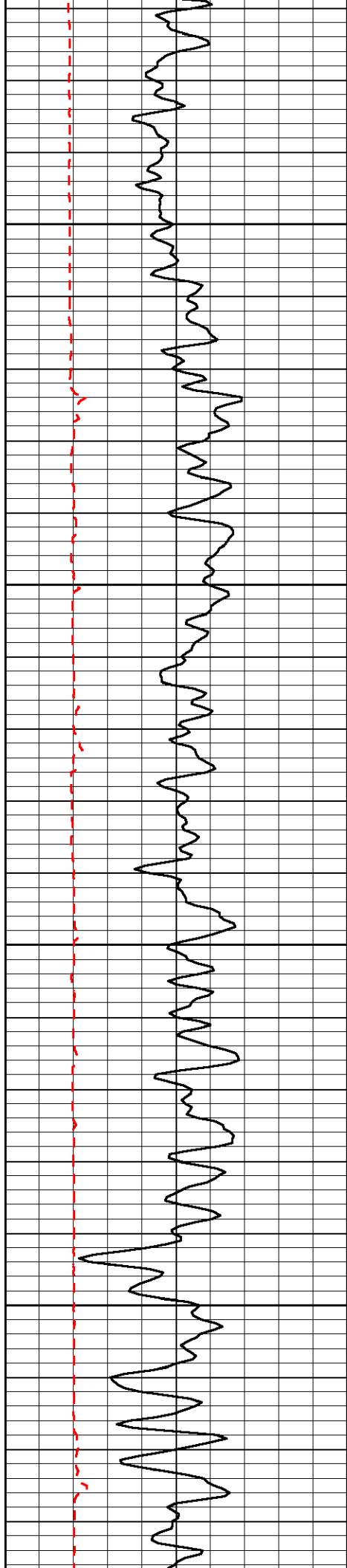


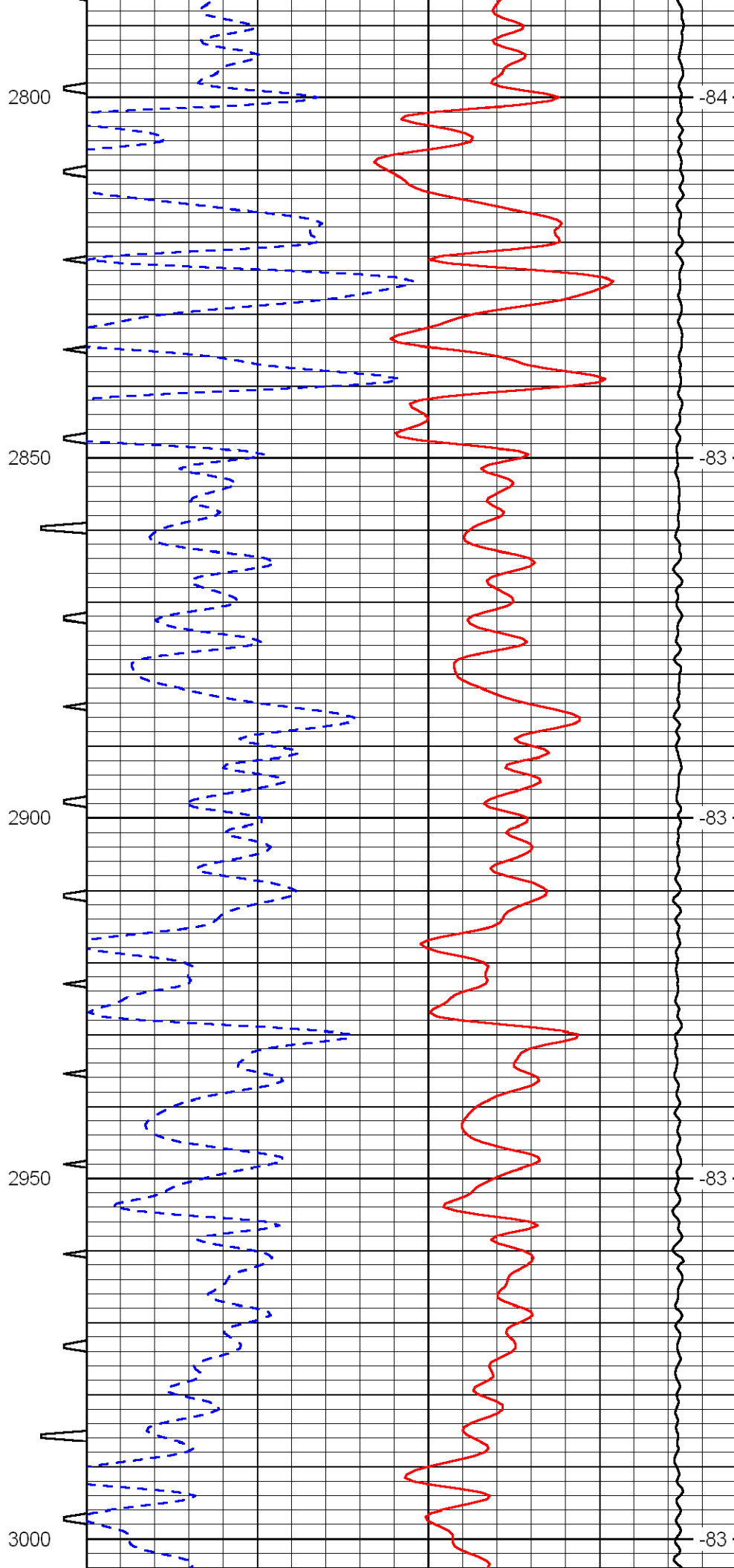
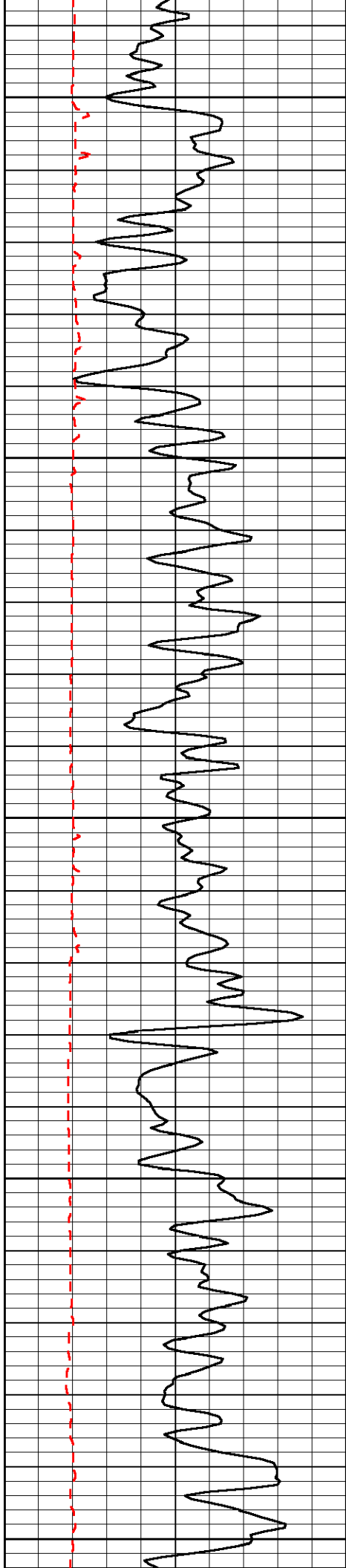


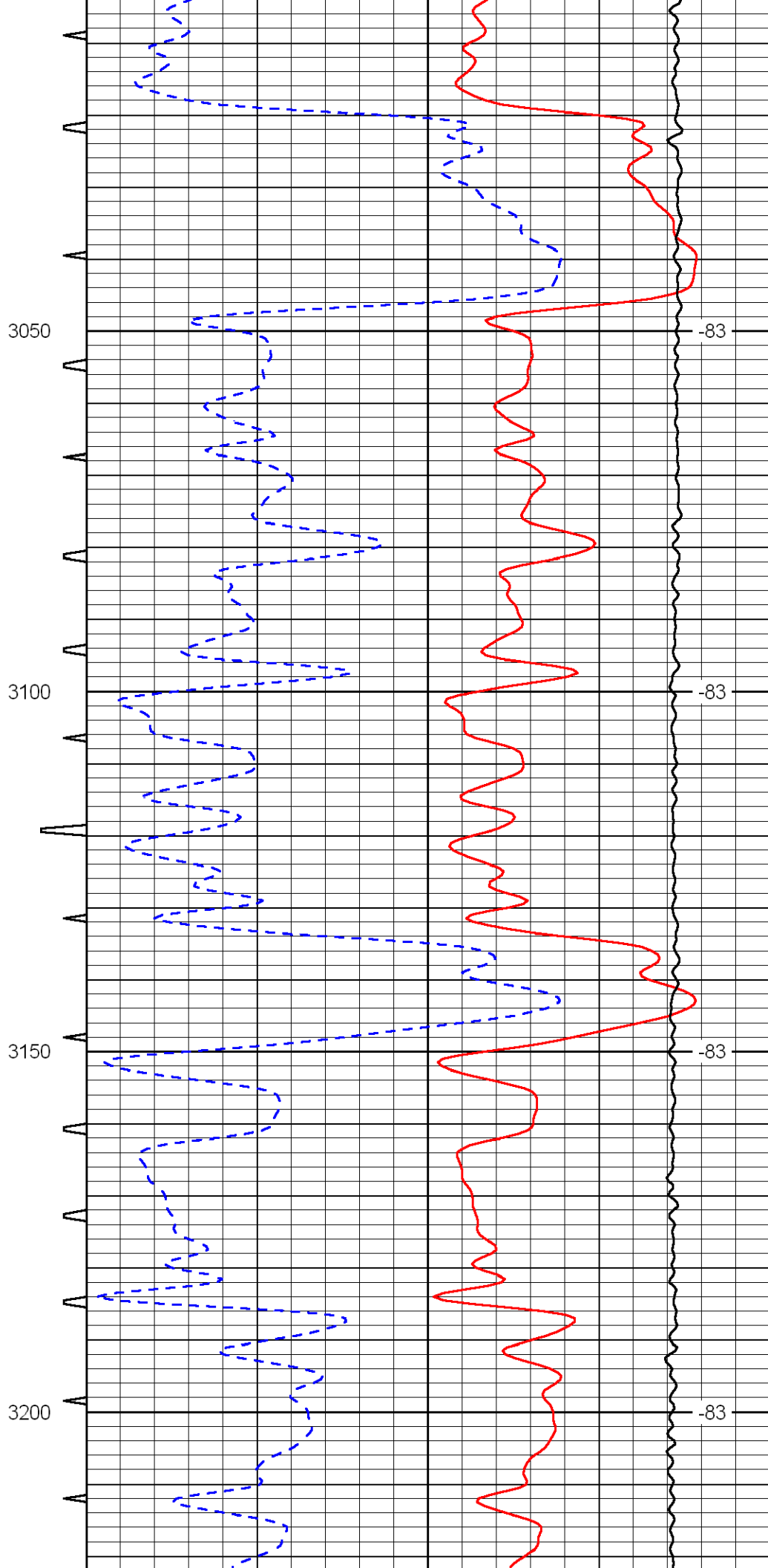
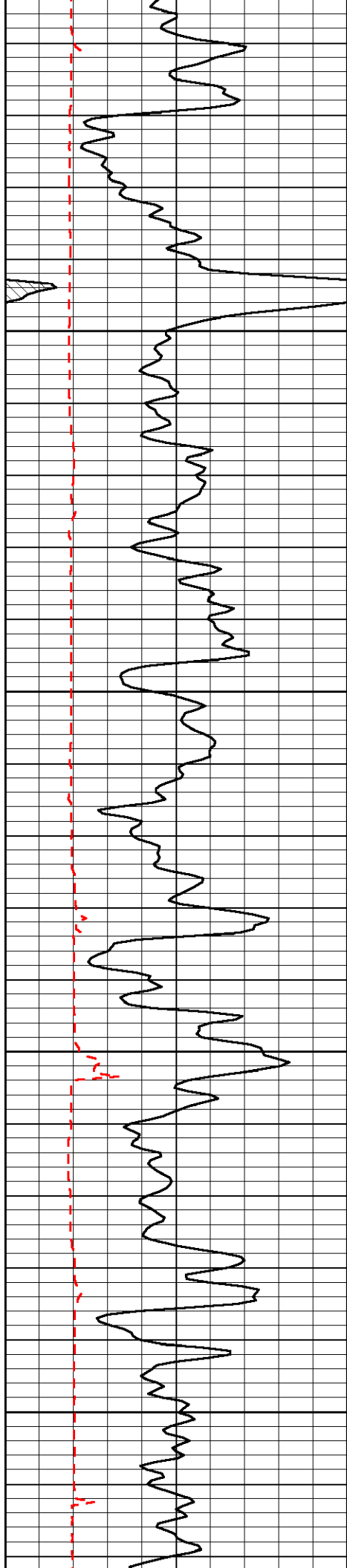


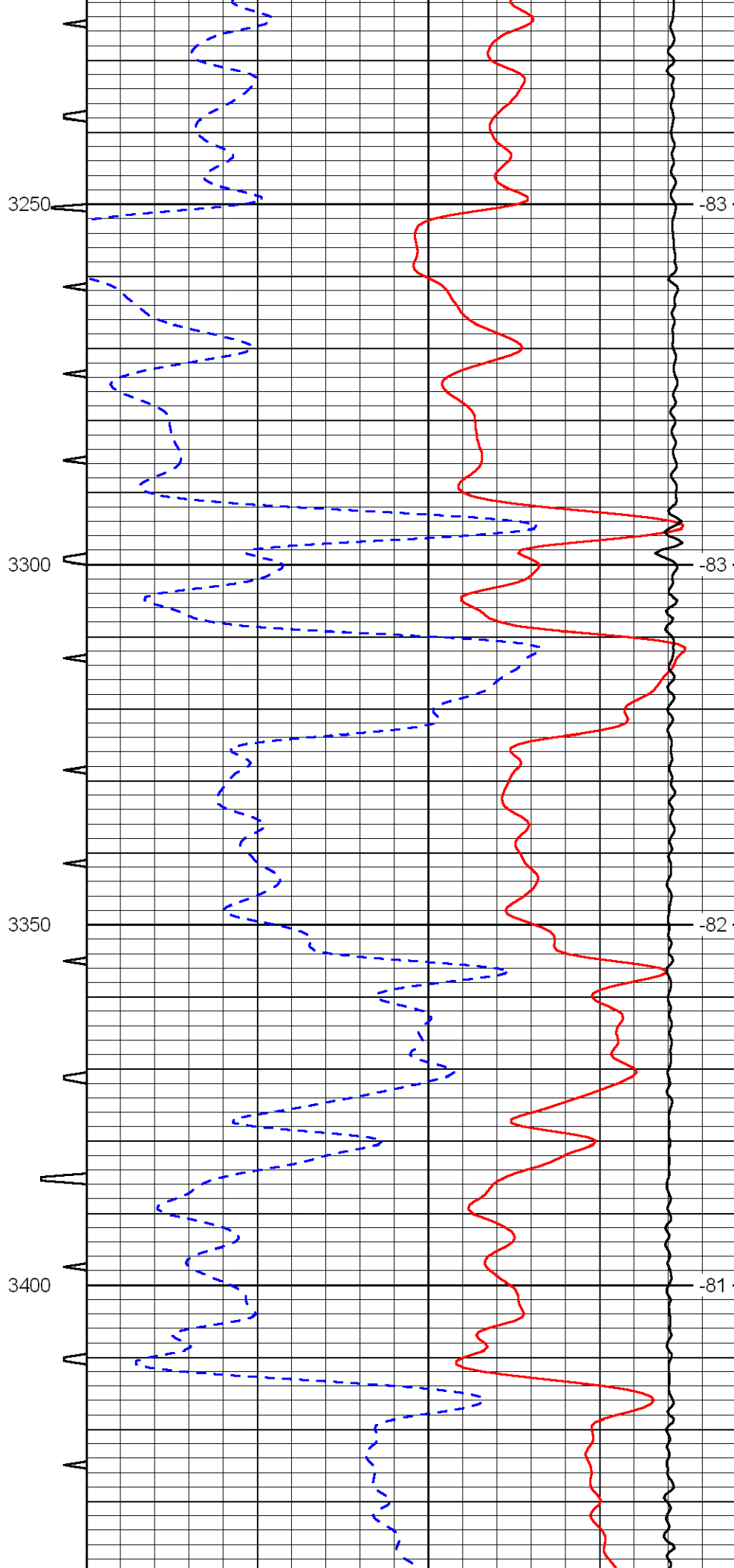
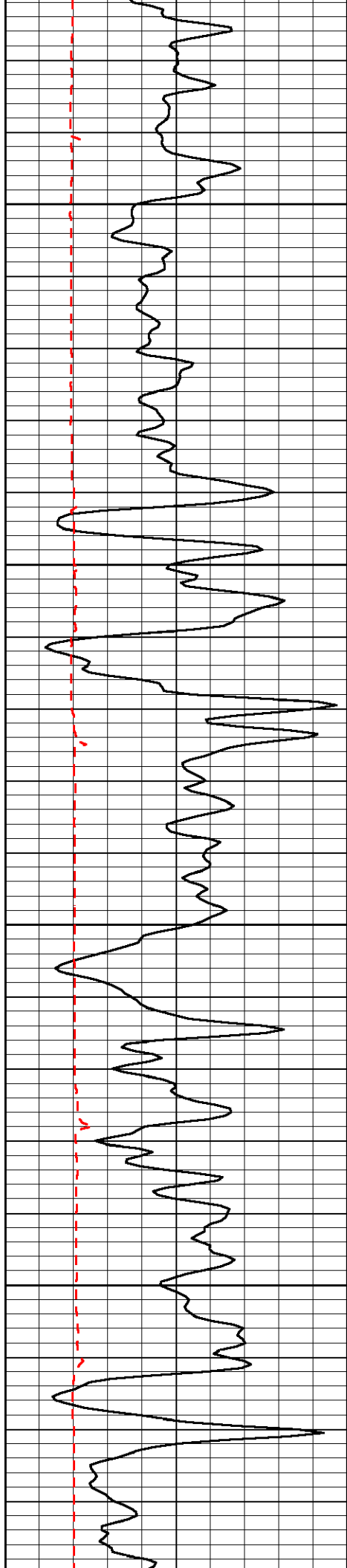


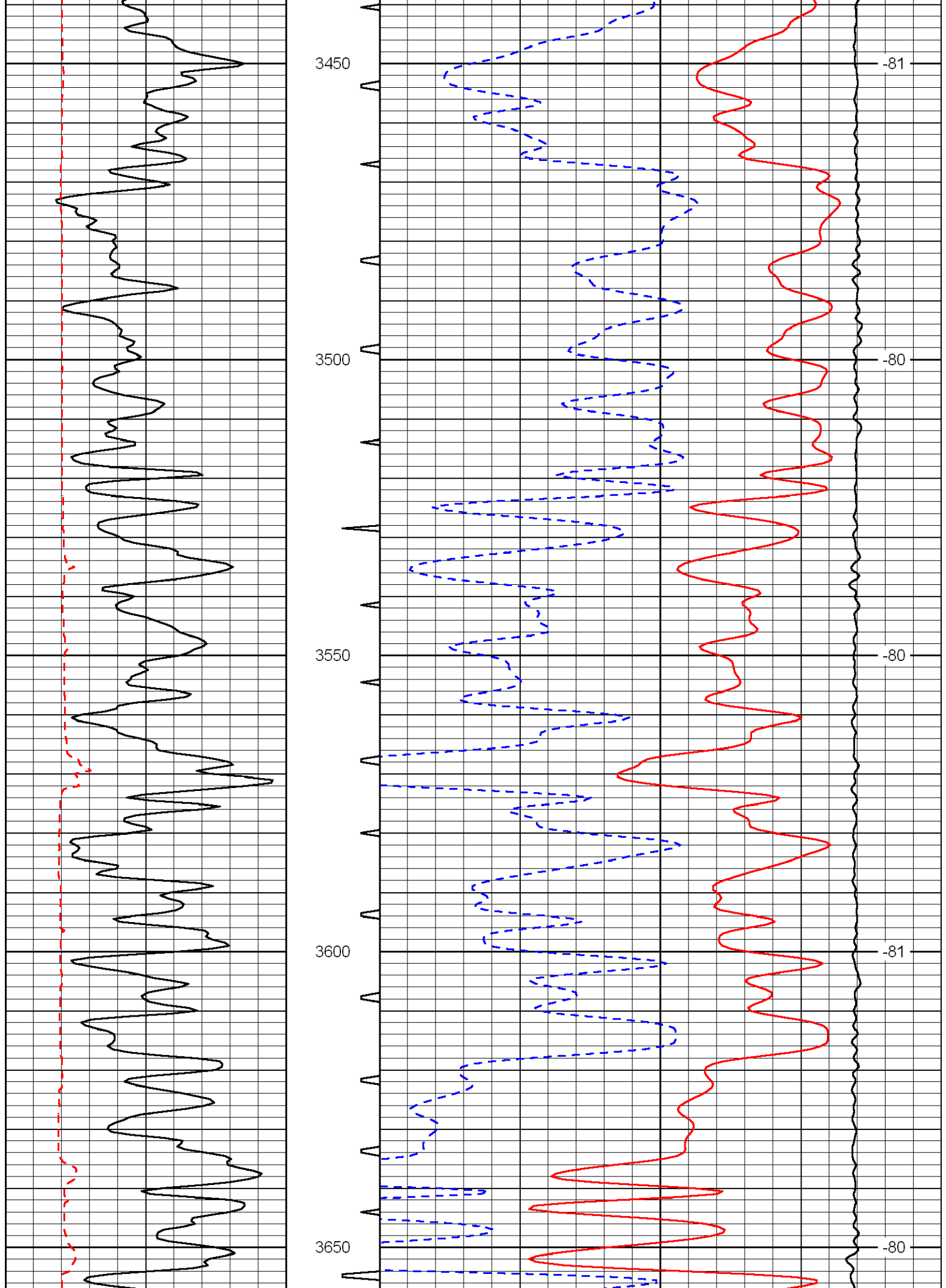


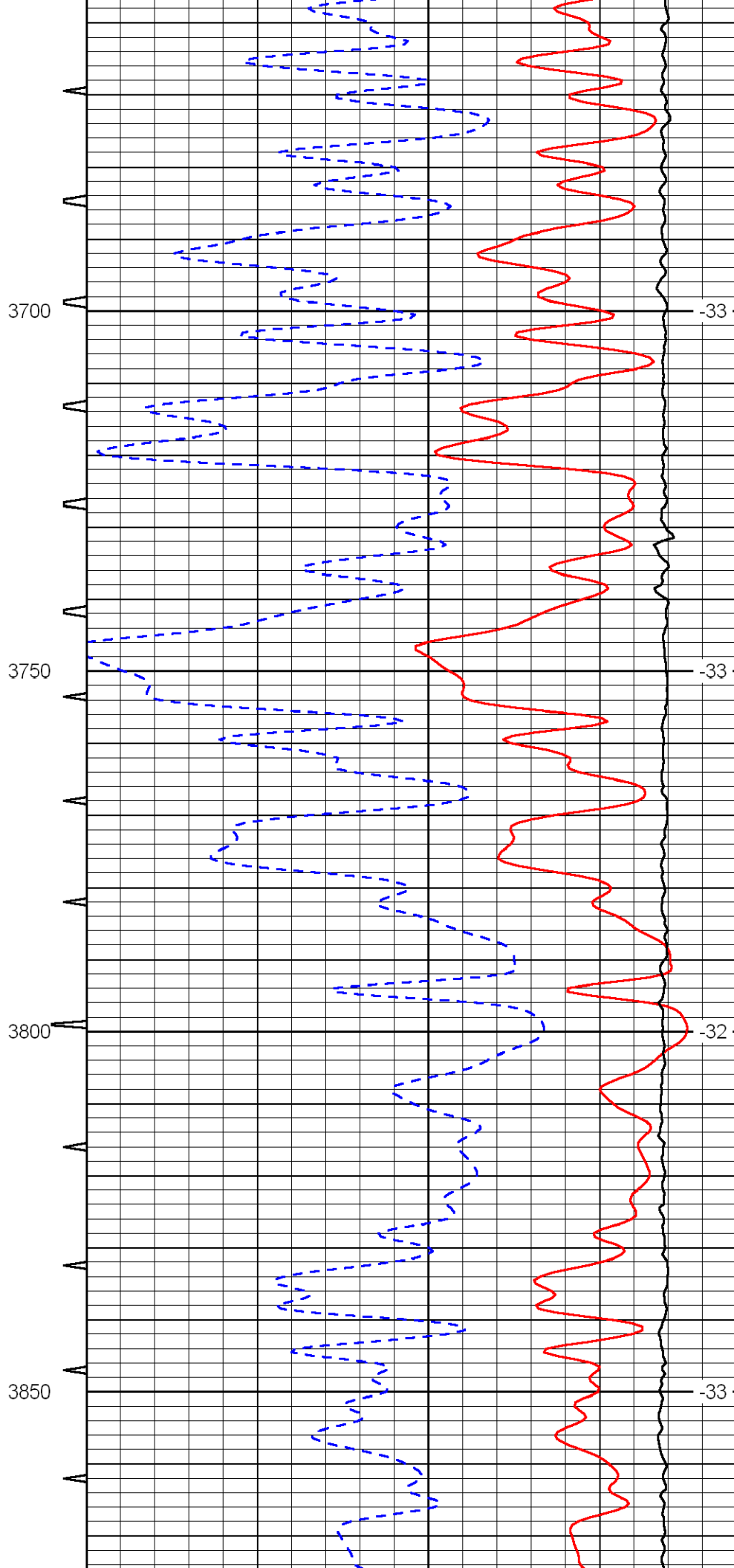
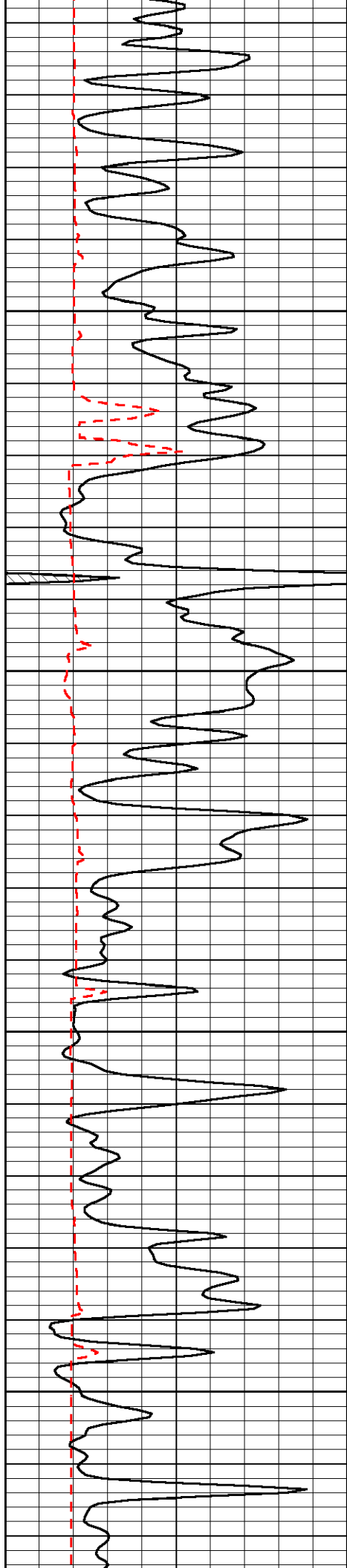












3700

-33

3750

-33

3800

-32

3850

-33

