



# Microresistivity Log

**DIGITAL LOG (785) 625-3858**

API No.	15-109-20,909-00-00		
Company	Murfin Drilling Co., Inc.		
Well	J & J Kuhlman No. 2-4		
Field	Wildcat		
County	Logan	State	Kansas
Location	2700' FEL & 1100' FNL		
Sec: 4	Twp: 13S	Rge: 32W	
Permanent Datum	Ground Level	Elevation 3041	Other Services CNL/CDL DIL/BHCS
Log Measured From	Kelly Bushing	10 Ft. Above Perm. Datum	
Drilling Measured From	Frotkelly Bushing		Elevation K.B. 3051 D.F. 3041 G.L. 3041

Date	05/16/2010	
Run Number	Two	
Depth Driller	4740	
Depth Logger	4739	
Bottom Logged Interval	4738	
Top Log Interval	3700	
Casing Driller	8.625 @ 227	
Casing Logger	223	
Bit Size	7.875	
Type Fluid in Hole	Chemical	
Salinity, ppm CL	3,200	
Density / Viscosity	9.1	53
pH / Fluid Loss	11.5	6.8
Source of Sample	Flowline	
Rm @ Meas. Temp	1.1 @ 70	
Rmf @ Meas. Temp	.82 @ 70	
Rmc @ Meas. Temp	1.48 @ 70	
Source of Rmf / Rmc	Charts	
Rm @ BHT	.61 @ 125	
Operating Rig Time	5 Hours	
Max Rec. Temp. F	125	
Equipment Number	17	
Location	Hays	
Recorded By	Jason Wellbrock	
Witnessed By	Tom Funk	

<<< Fold Here >>>

All interpretations are opinions based on inferences from electrical or other measurements and we cannot and do not guarantee the accuracy or correctness of any interpretation, and we shall not, except in the case of gross or willful negligence on our part, be liable or responsible for any loss, costs, damages, or expenses incurred or sustained by anyone resulting from any interpretation made by any of our officers, agents or employees. These interpretations are also subject to our general terms and conditions set out in our current Price Schedule.

### Comments

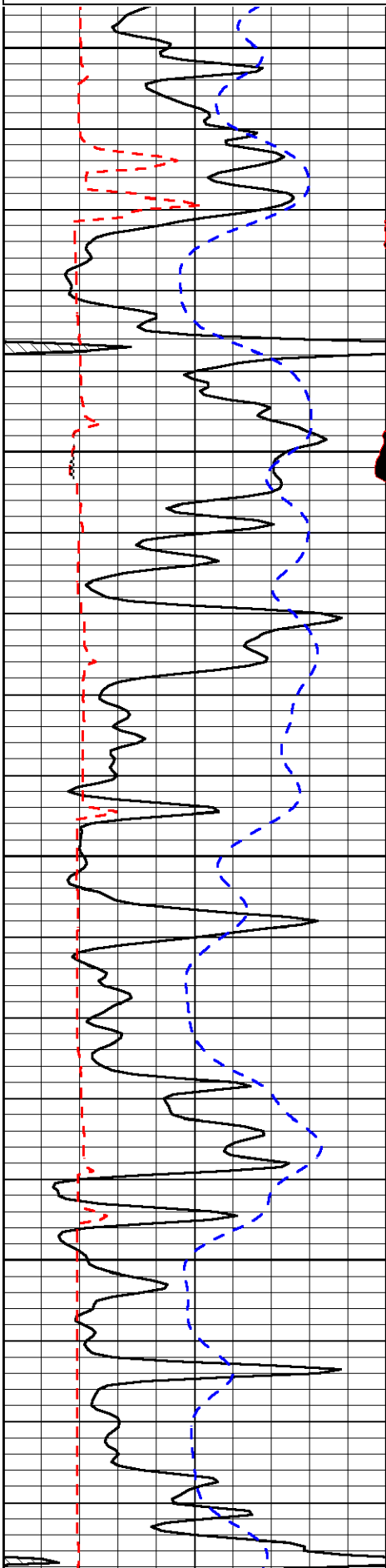
Thank you for using Log-Tech, Inc.  
(785) 625-3858

Oakley S to Gove rd, 1 1/2 W, S Into

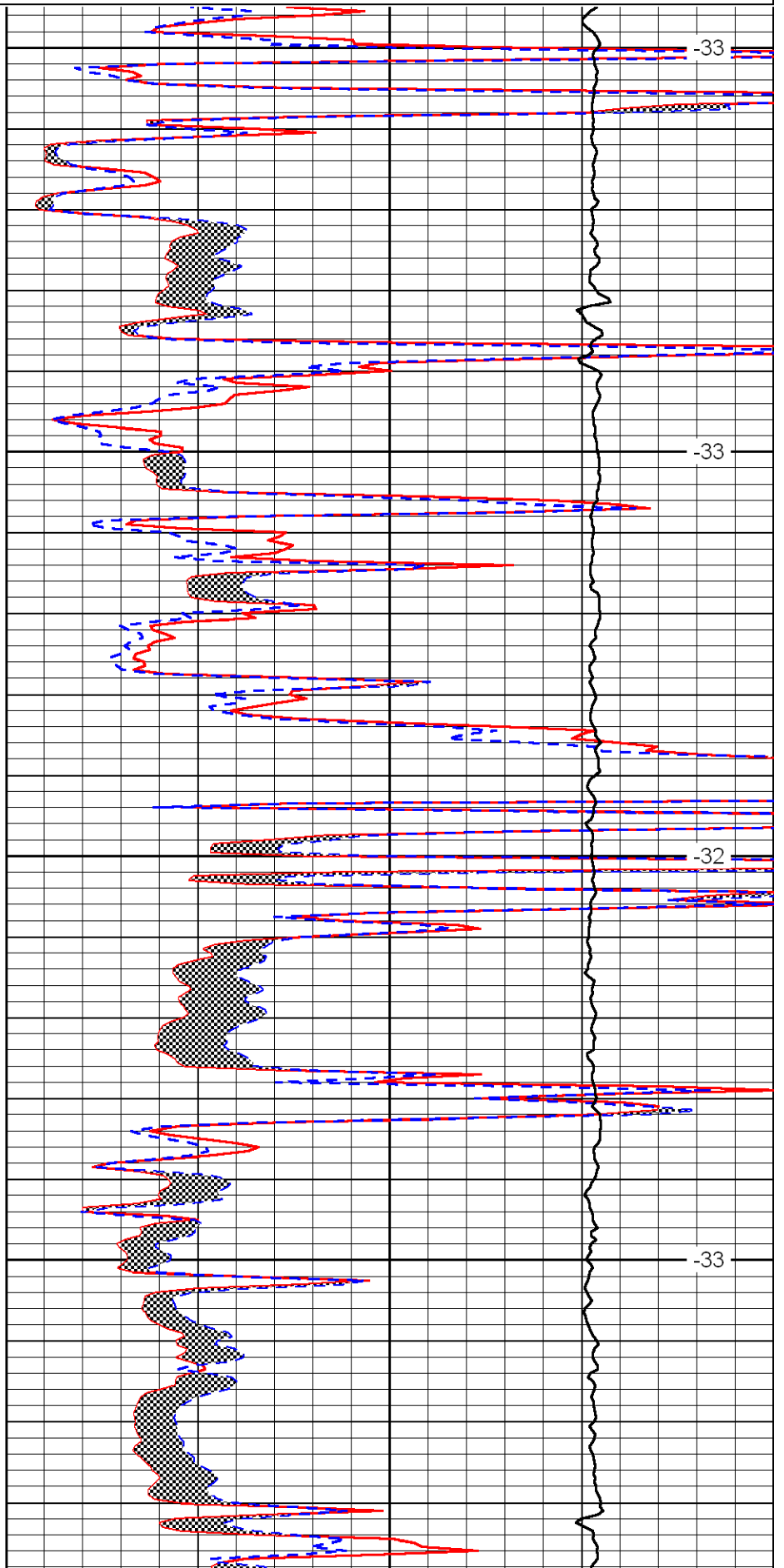
Database File: murfhd.db  
 Dataset Pathname: dil/mf2in  
 Presentation Format: micro  
 Dataset Creation: Sun May 16 15:18:48 2010  
 Charted by: Depth in Feet scaled 1:240

0	Gamma Ray	150
6	MCAL (GAPI)	16
2.875	Mud Cake (GAPI)	7.875
-200	SP	0

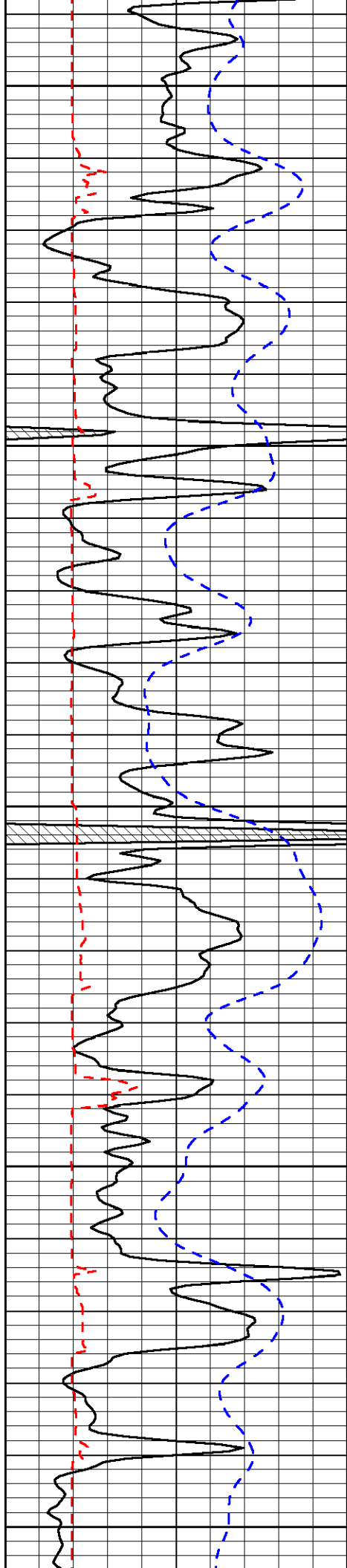
0	Micro Inverse 1 X 1	40
0	Micro Normal 2"	40
10000	Line Weight	0
		LSPD



3700  
3750  
3800  
3850



-33  
-33  
-32  
-33



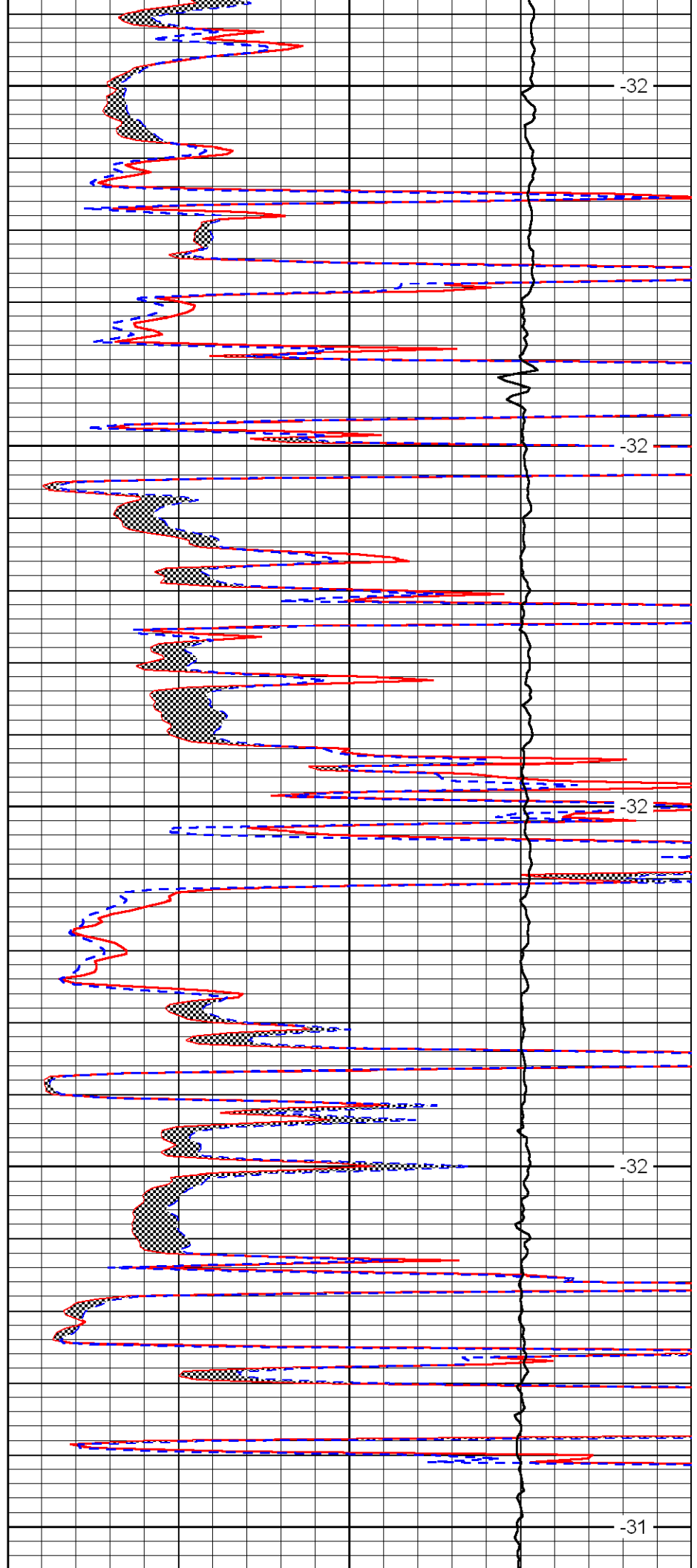
3900

3950

4000

4050

4100



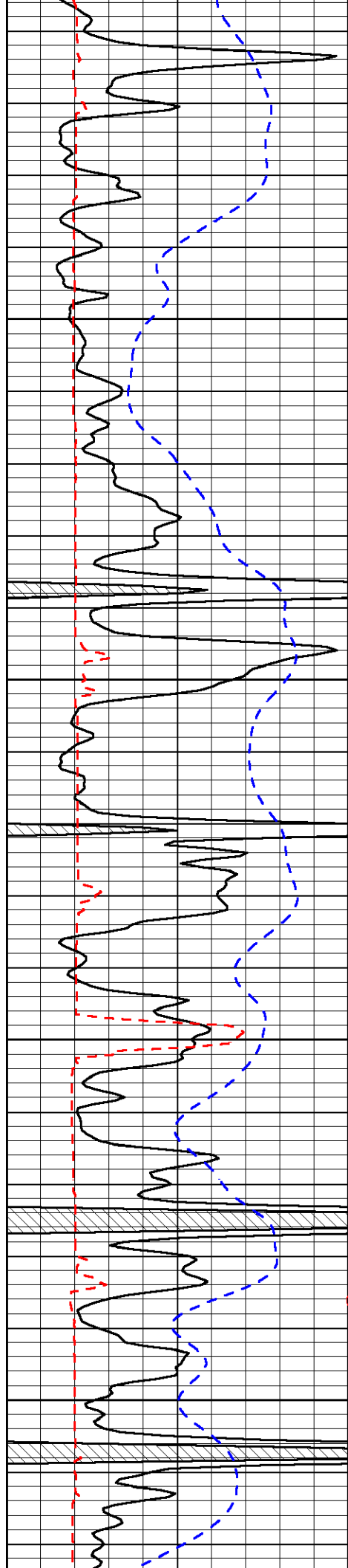
-32

-32

-32

-32

-31

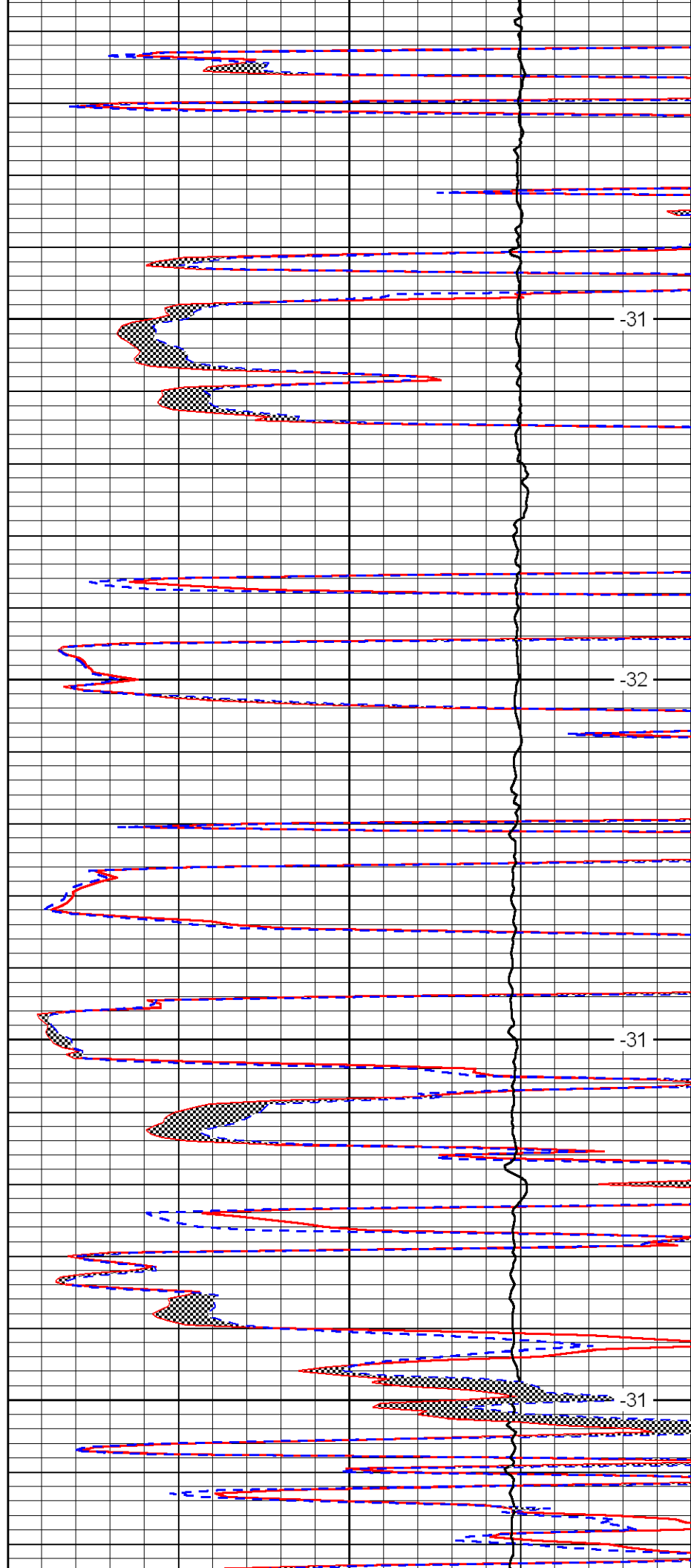


4150

4200

4250

4300

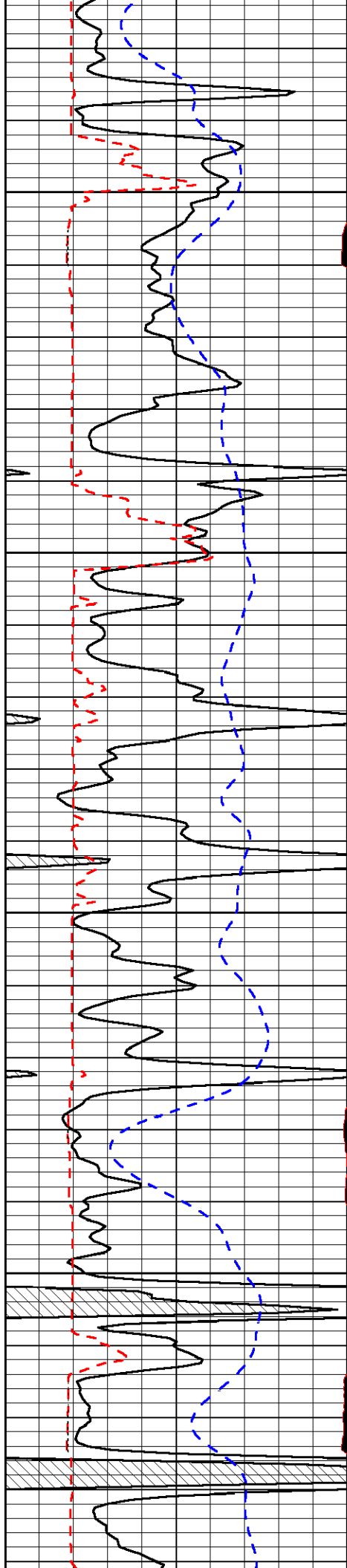


-31

-32

-31

-31

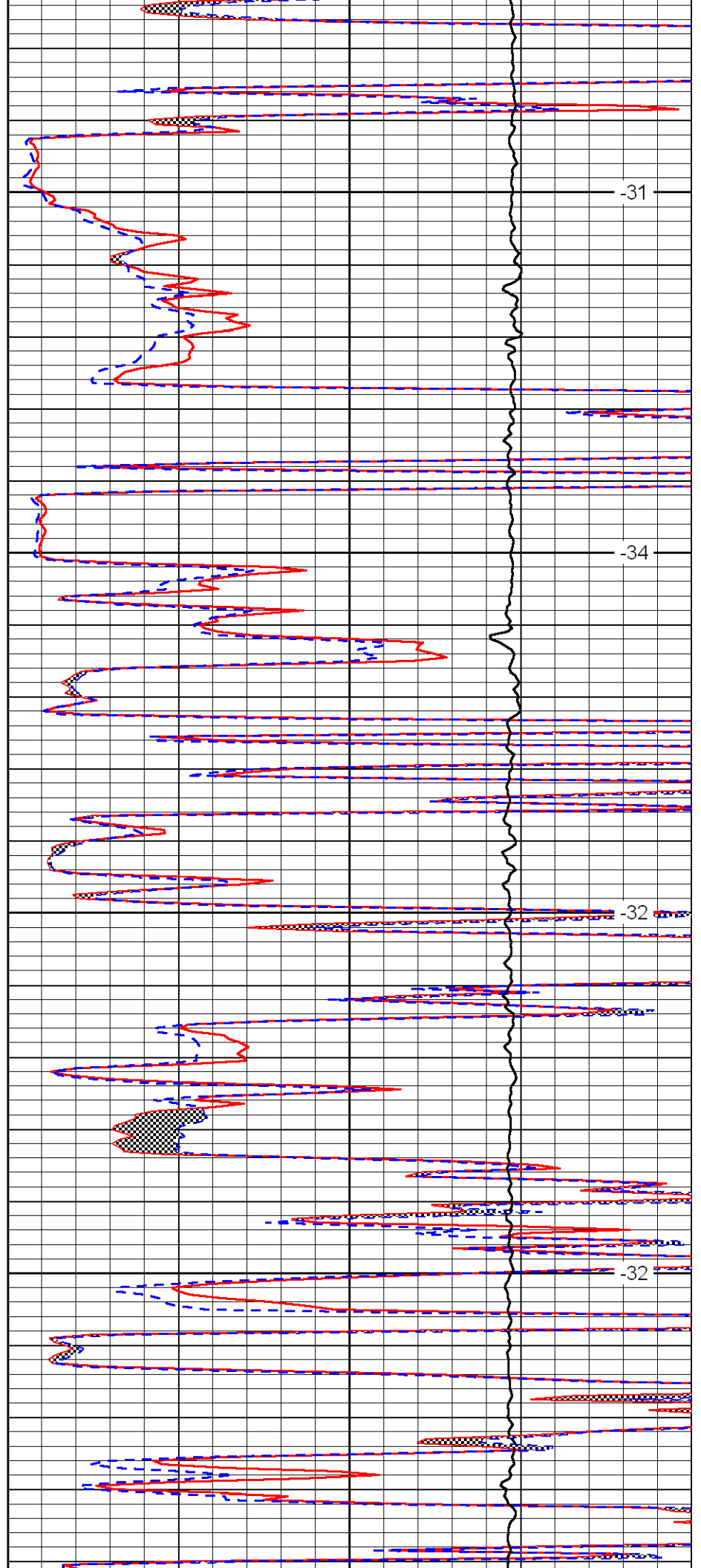


4350

4400

4450

4500

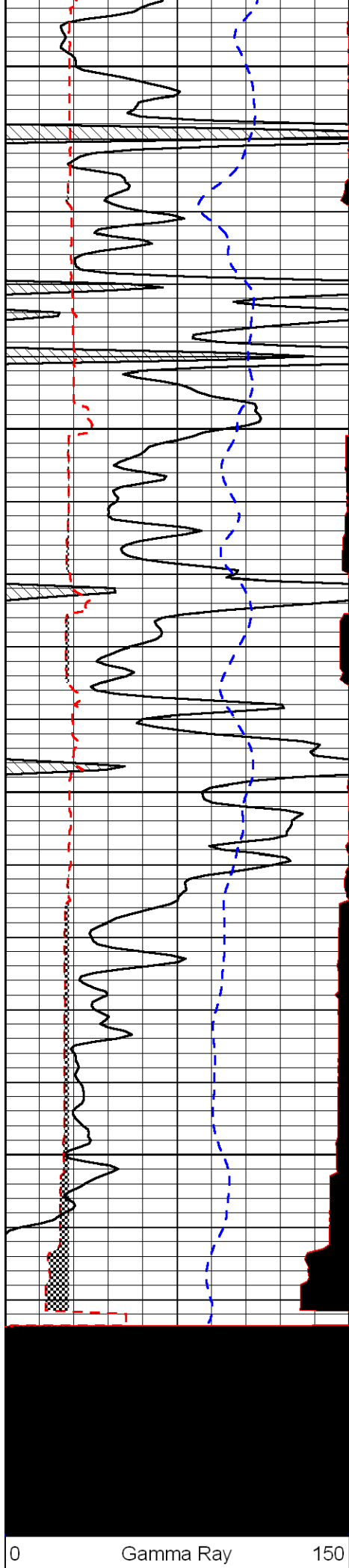


-31

-34

-32

-32



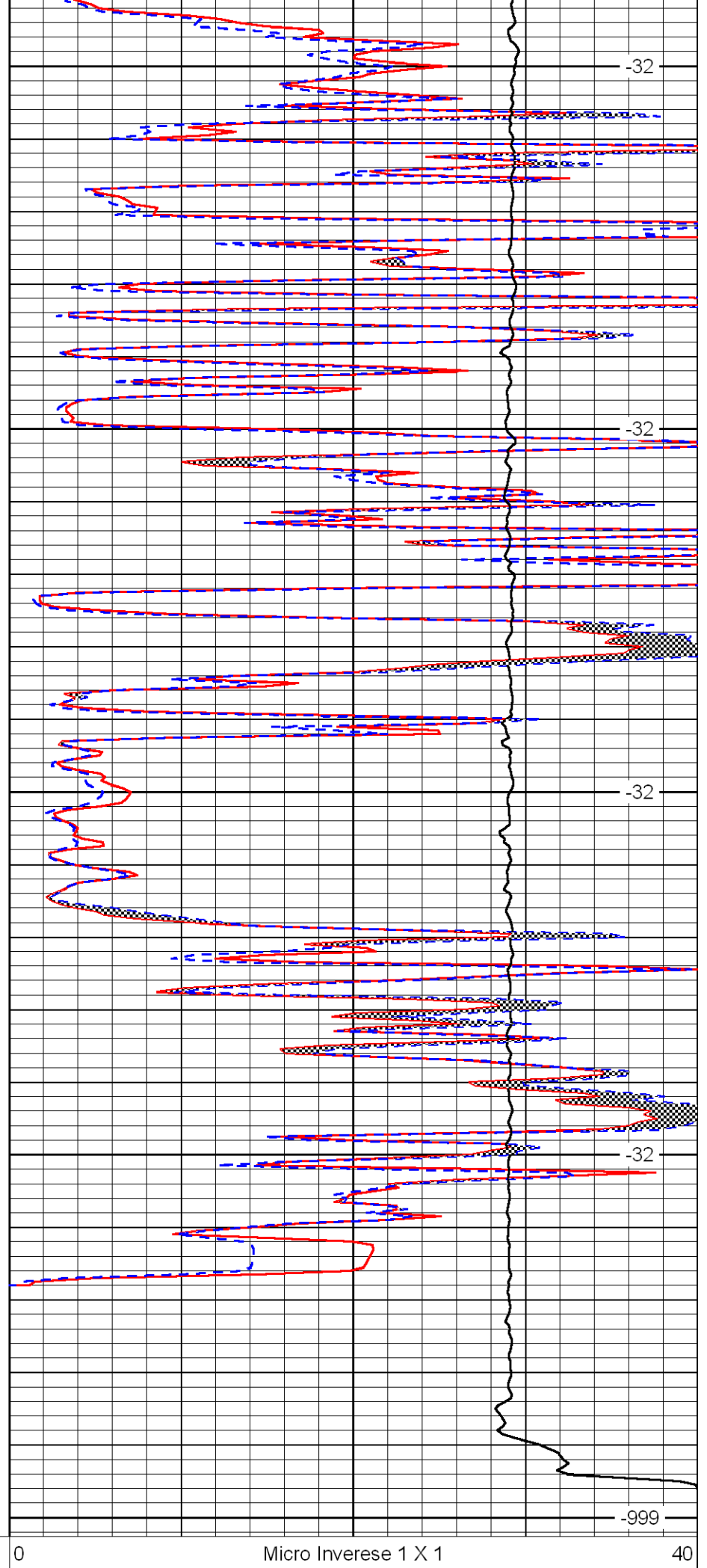
4550

4600

4650

4700

4750



-32

-32

-32

-32

-999

6	MCAL (GAPI)	16
2.875	Mud Cake (GAPI)	7.875
-200	SP	0

0	Micro Normal 2"	40
10000	Line Weight	0
		LSPD