



Dual Compensated
Porosity Log

DIGITAL LOG (785) 625-3858

API No.	15-109-20,909-00-00	
Company	Murfin Drilling Co., Inc.	
Well	J & J Kuhlman No. 2-4	
Field	Wildcat	
County	Logan	State Kansas
Location	2700' FEL & 1100' FNL	
Sec: 4	Twp: 13S	Rge: 32W
Permanent Datum	Ground Level	Elevation 3041
Log Measured From	Kelly Bushing	10 Ft. Above Perm. Datum
Drilling Measured From	Kelly Bushing	
		Other Services DIL MEL/BHCS
		Elevation K.B. 3051 D.F. G.L. 3041

Date	05/16/2010	
Run Number	One	
Type Log	CNL / CDL	
Depth Driller	4740	
Depth Logger	4739	
Bottom Logged Interval	4718	
Top Logged Interval	3700	
Type Fluid In Hole	Chemical	
Salinity, PPM CL	3,200	
Density	9.1	
Level	Full	
Max. Rec. Temp. F	125	
Operating Rig Time	5 Hours	
Equipment -- Location	17	Hays
Recorded By	Jason Wellbrock	
Witnessed By	Tom Funk	

Borehole Record		Casing Record					
Run No	Bit	From	To	Size	Wgt.	From	To
One	12.25	00	227	8.625	23#	00	227
Two	7.875	227	TD				

<<< Fold Here >>>

All interpretations are opinions based on inferences from electrical or other measurements and we cannot and do not guarantee the accuracy or correctness of any interpretation, and we shall not, except in the case of gross or willful negligence on our part, be liable or responsible for any loss, costs, damages, or expenses incurred or sustained by anyone resulting from any interpretation made by any of our officers, agents or employees. These interpretations are also subject to our general terms and conditions set out in our current Price Schedule.

Comments

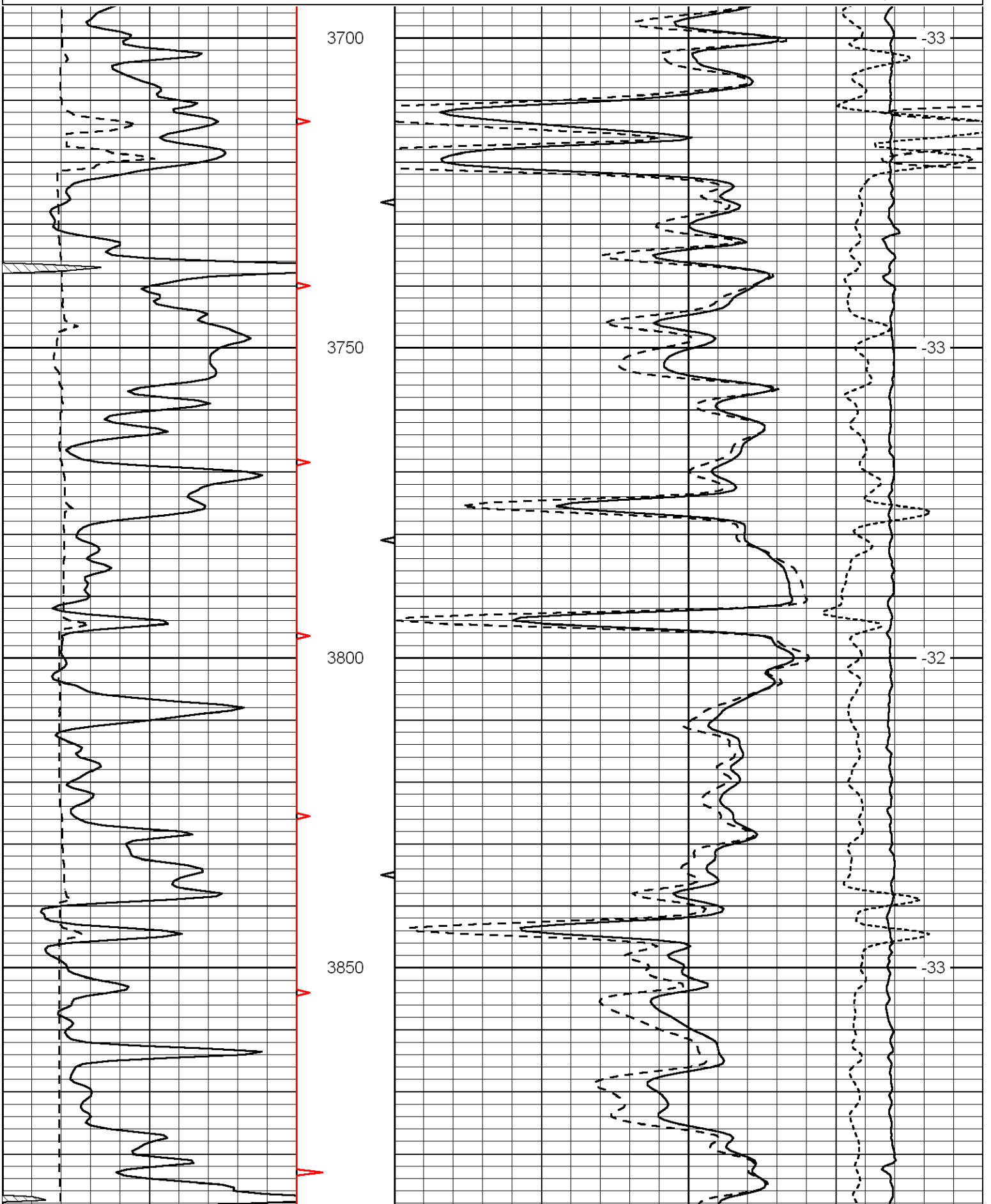
Thank you for using Log-Tech, Inc.
(785) 625-3858

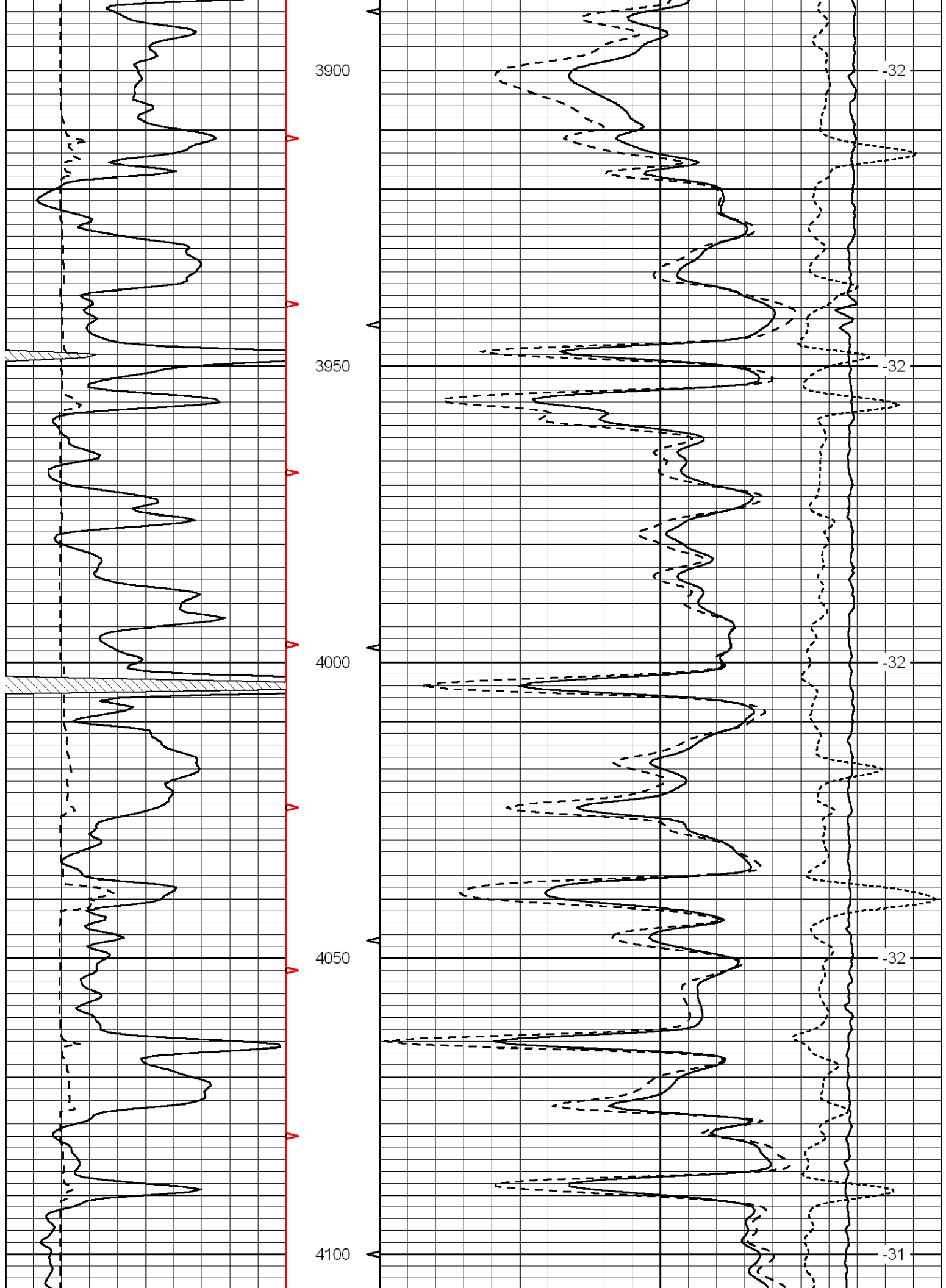
Oakley S to Gove rd, 1 1/2 W, S Into

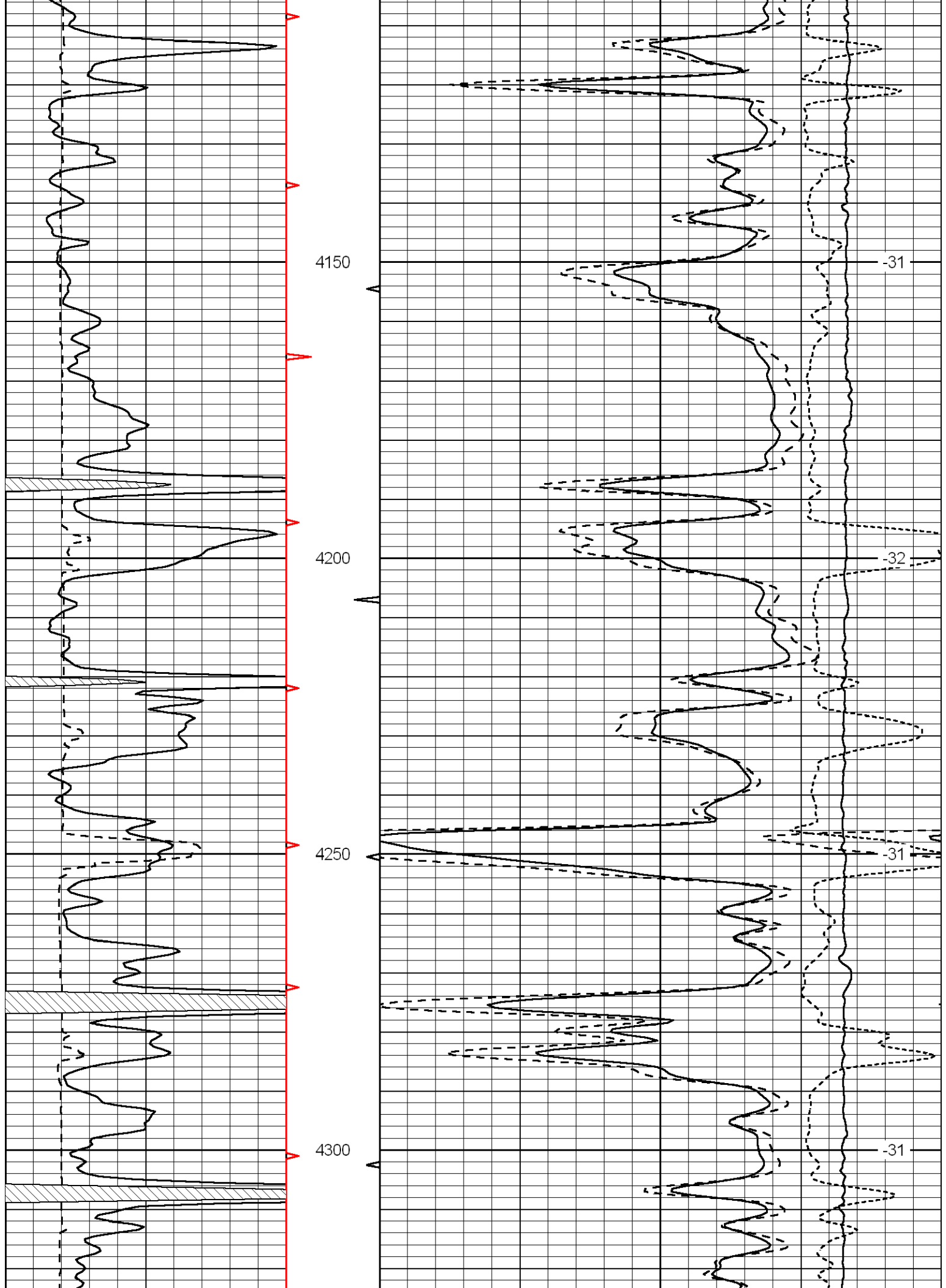
Database File: murfhd.db
 Dataset Pathname: dil/mf2in
 Presentation Format: cdl
 Dataset Creation: Sun May 16 15:18:48 2010
 Charted by: Depth in Feet scaled 1:240

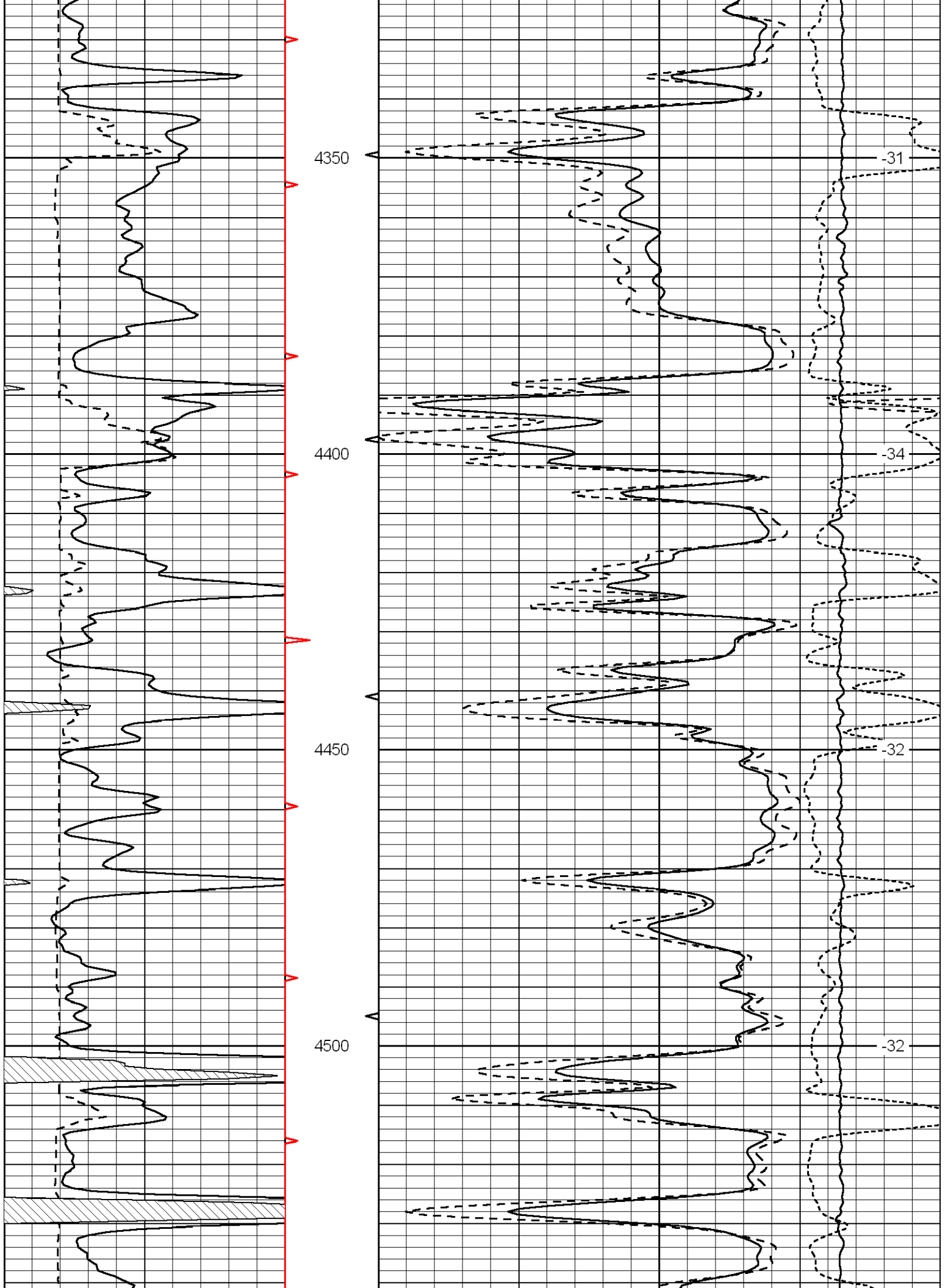
0	Gamma Ray	150
6	Caliper (GAPI)	16

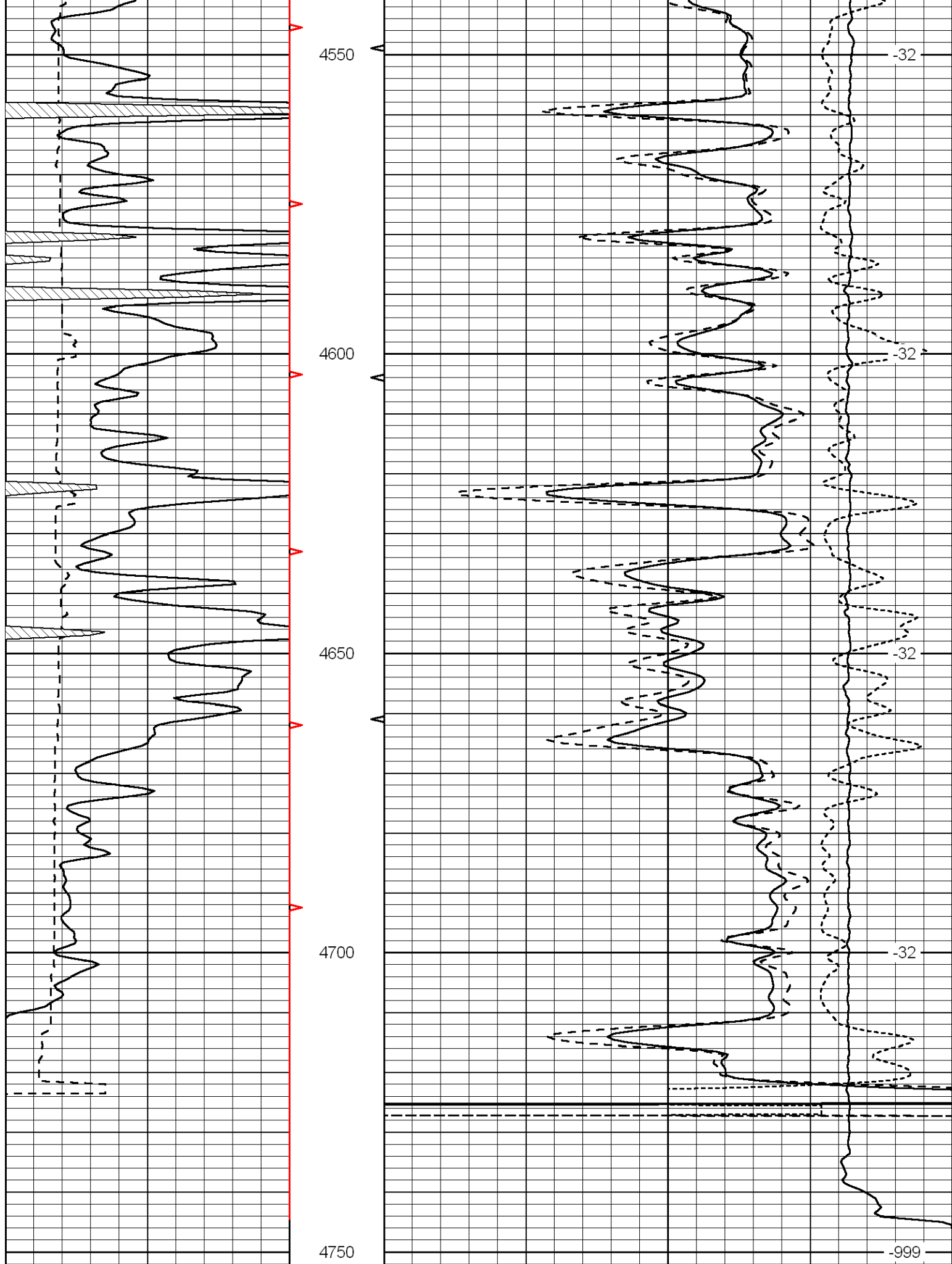
30	Compensated Density	-10	
2	Bulk Density	3	
15000	Line Tension	0	
	-0.25	Correction	0.25
			LSPD











4550

-32

4600

-32

4650

-32

4700

-32

4750

-999

0 Gamma Ray 150

30 Compensated Density -10

6	Caliper (GAPI)	16
---	----------------	----

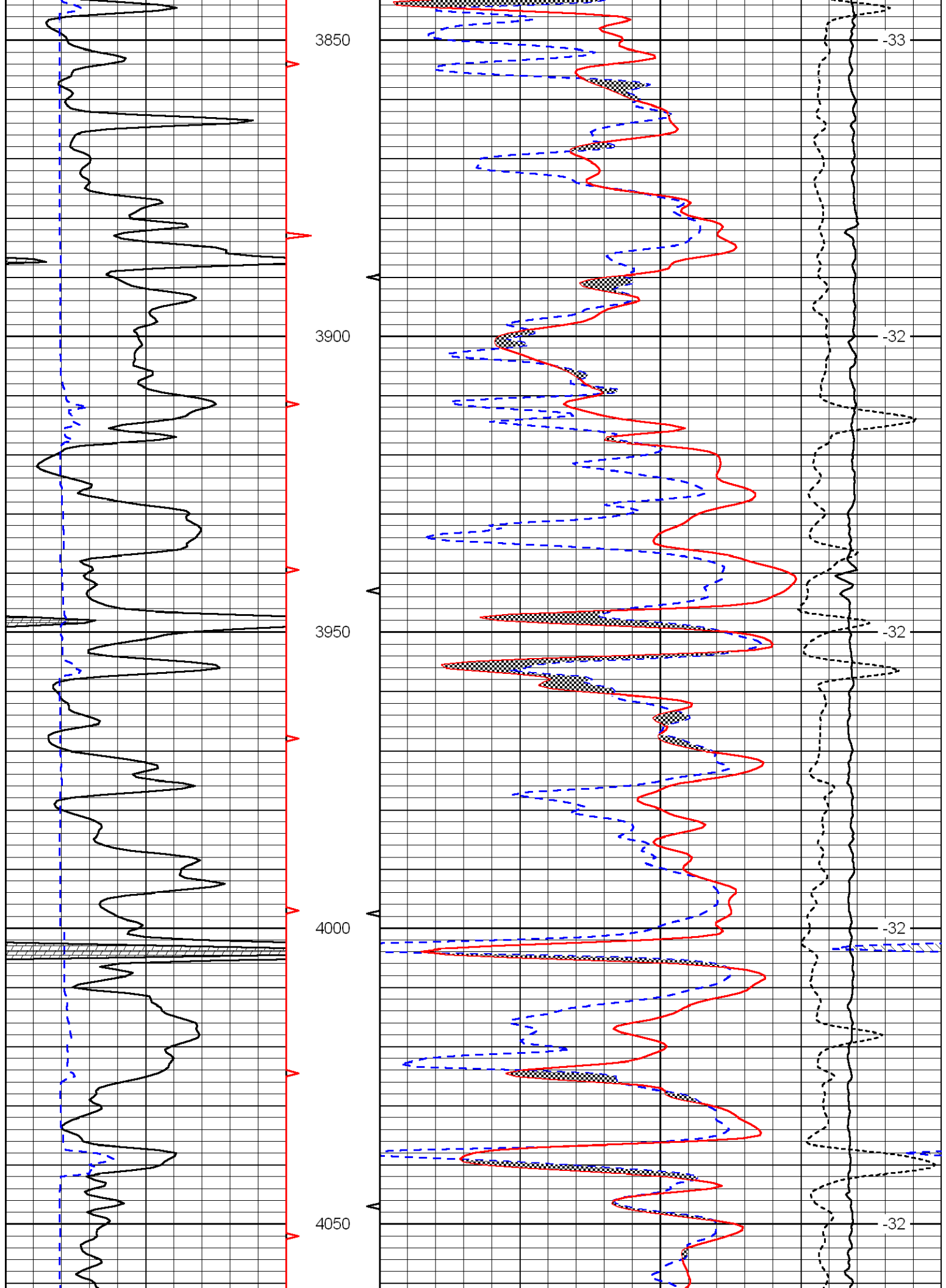
2	Bulk Density	3
15000	Line Tension	0
-0.25	Correction	0.25
LSPD		

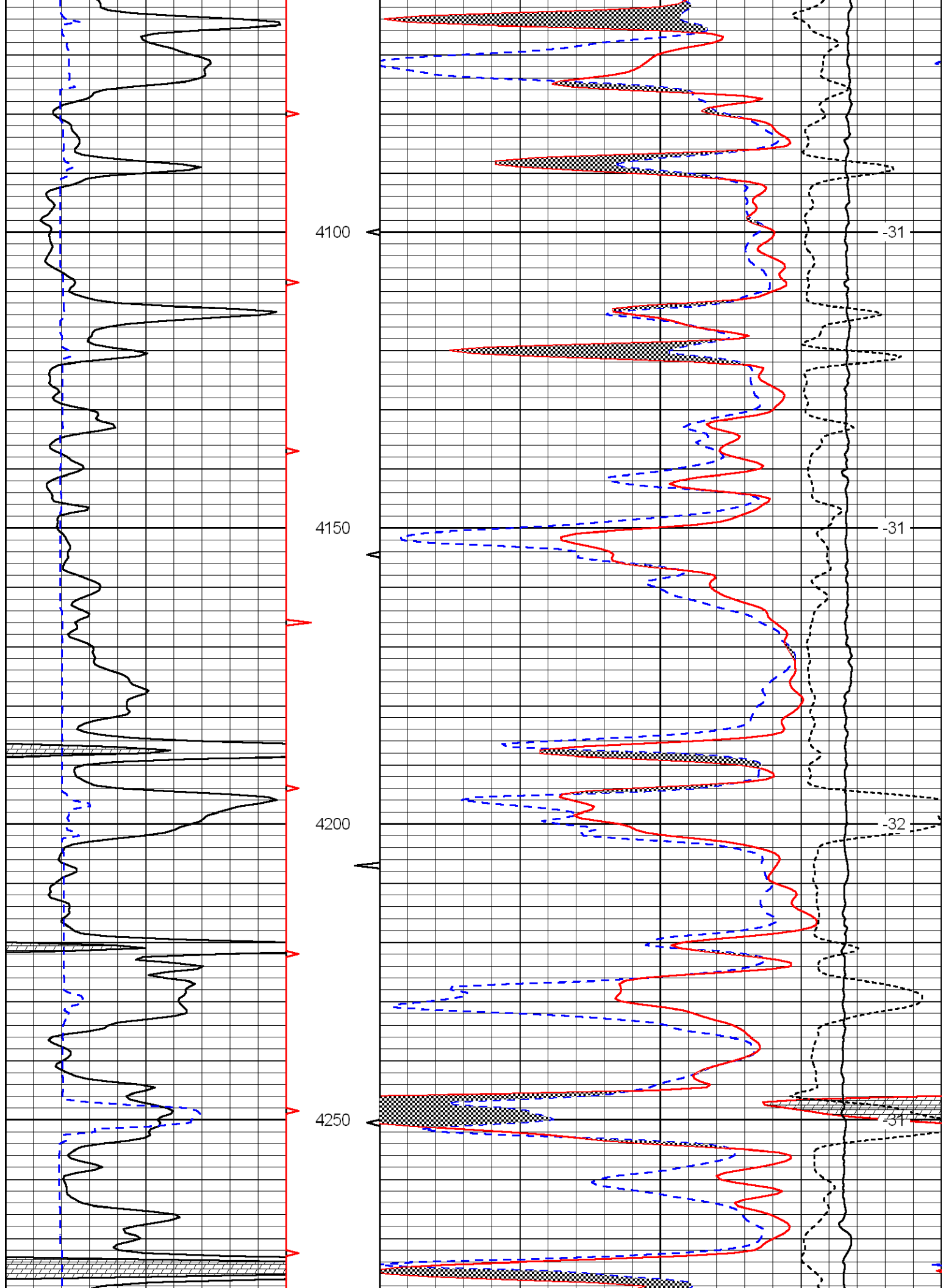
Database File: murfhd.db
 Dataset Pathname: dil/mf2in
 Presentation Format: oncdl
 Dataset Creation: Sun May 16 15:18:48 2010
 Charted by: Depth in Feet scaled 1:240

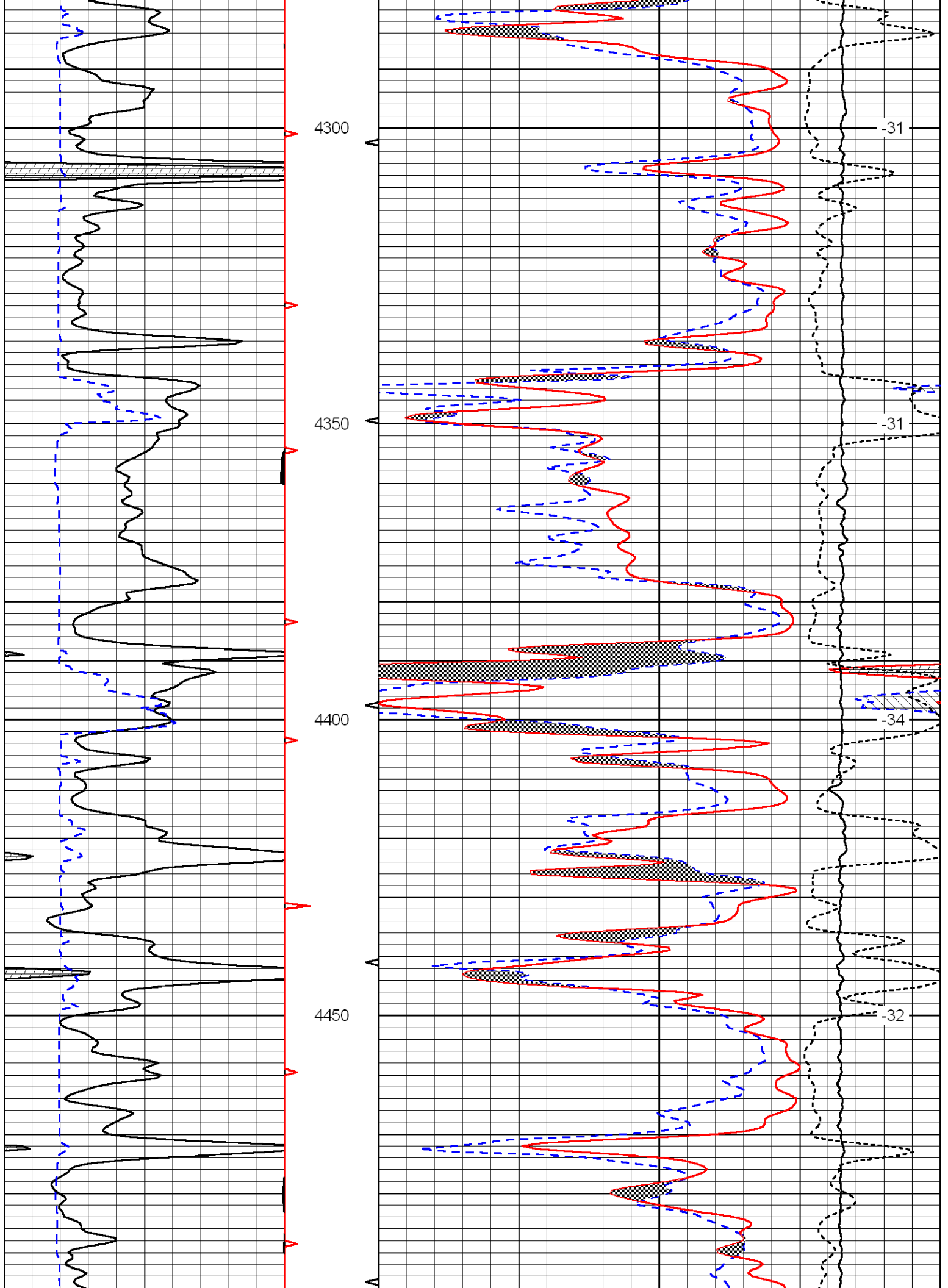
0	Gamma Ray	150
6	DCAL (GAPI)	16

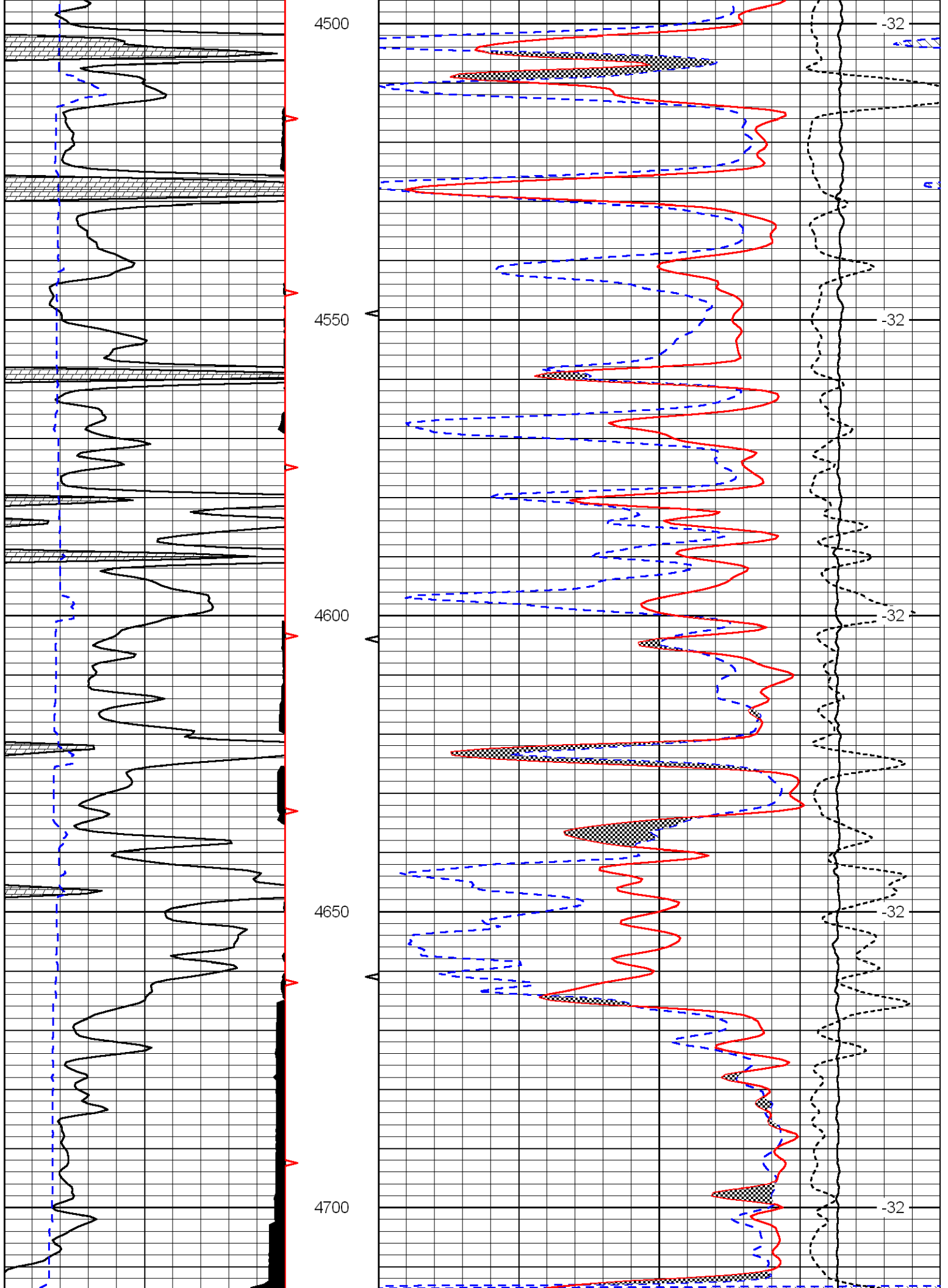
30	CNLS	-10
30	Compensated Density (2.71 ma)	-10
15000	LTEN	0
-0.25	Correction	0.25
LSPD		

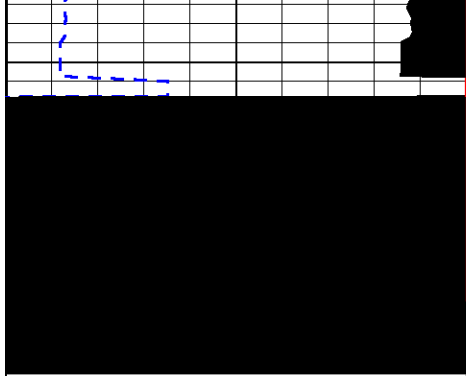




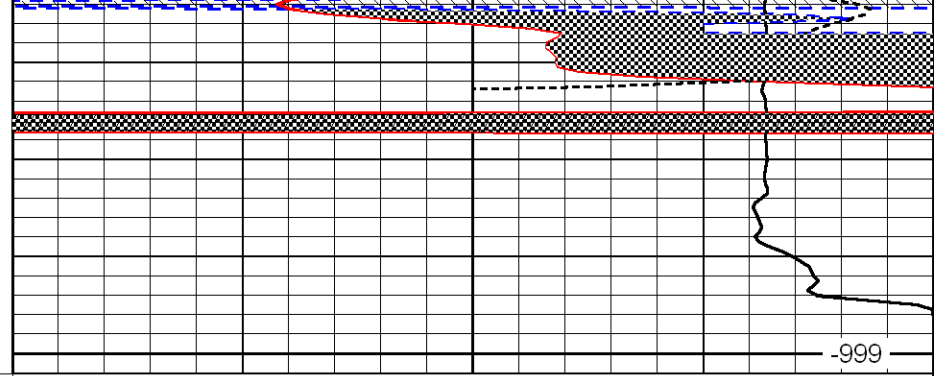








4750



0	Gamma Ray	150
6	DCAL (GAPI)	16

30	CNLS	-10
30	Compensated Density (2.71 ma)	-10
15000	LTEN	0
	-0.25 Correction 0.25	
	LSPD	