



DIGITAL LOG (785) 625-3858

Borehole Compensated
Sonic Log

API No. 15-015-23,862-00-00

Company Noble Petroleum, Inc.
Well Klaassen No. 8
Field Plum Grove South
County Butler State Kansas

Location 2355' FSL & 2425' FEL

Sec: 27 Twp: 24 S Rge: 4 E

Other Services
DIL
CNL/CDL

Permanent Datum Ground Level Elevation 1360
Log Measured From Kelly Bushing 9 Ft. Above Perm. Datum
Drilling Measured From Kelly Bushing

Date 5/8/2010

Run Number Two

Type Log BHC Sonic

Depth Driller 2945

Depth Logger 2939

Bottom Logged Interval 2928

Top Logged Interval 200

Type Fluid In Hole Chemical

Salinity, PPM CL 900

Density 9.2

Level Full

Max. Rec. Temp. F 105

Operating Rig Time 4 Hours

Equipment -- Location 15 Days

Recorded By B. Becker

Witnessed By Doug Davis

Borehole Record				Casing Record			
Run No.	Bit	From	To	Size	Wgt.	From	To
1	12.25	00	212	8.625	24#	00	212
2	7.875	212	2945				

<<< Fold Here >>>

All interpretations are opinions based on inferences from electrical or other measurements and we cannot and do not guarantee the accuracy or correctness of any interpretation, and we shall not, except in the case of gross or willful negligence on our part, be liable or responsible for any loss, costs, damages, or expenses incurred or sustained by anyone resulting from any interpretation made by any of our officers, agents or employees. These interpretations are also subject to our general terms and conditions set out in our current Price Schedule.

Comments

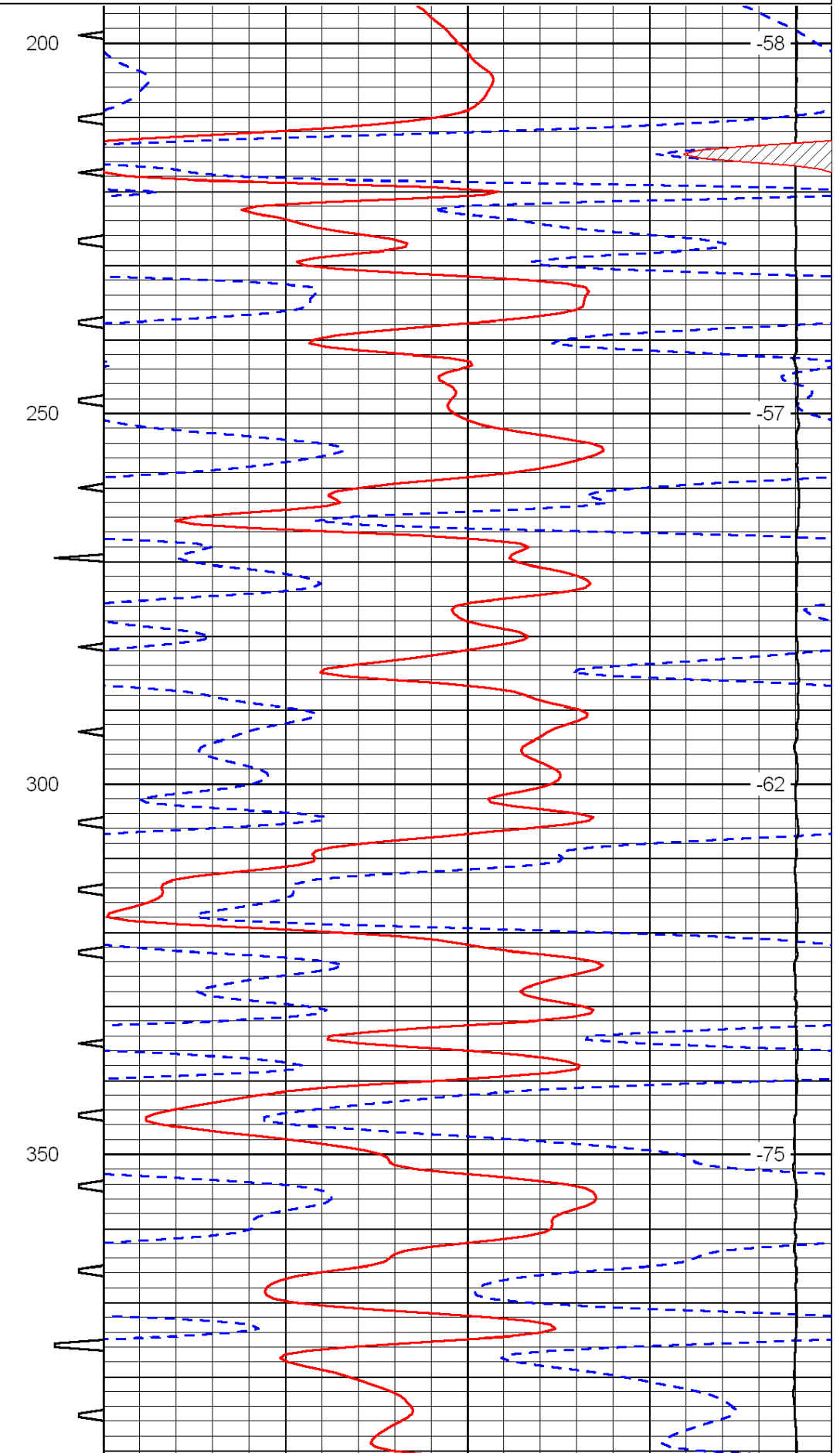
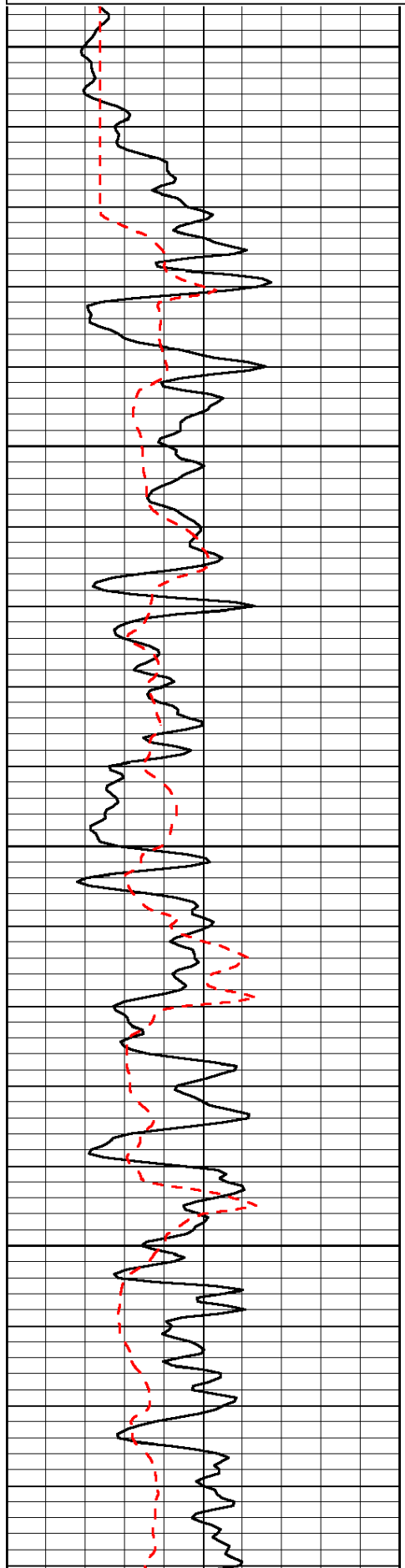
Thank you for using Log-Tech, Inc.
(785) 625-3858

Potwin, Ks; 1/2 East; 1/2 North;
1 East; 1/2 South; East into

Database File: c:\warrior\data\noble_klaassen no. 8\noblehd.db
Dataset Pathname: DIL\noblstk
Presentation Format: sonic
Dataset Creation: Sat May 08 09:23:39 2010
Charted by: Depth in Feet scaled 1:240

0	Gamma Ray	150	Sonic Int	140	Delta Time (usec/ft)	40
150	Gamma Ray	300	5	0	SPOR	-10
6	Caliper (GAPI)	16		15000	LTEN (lb)	0

LSPD



200

-58

250

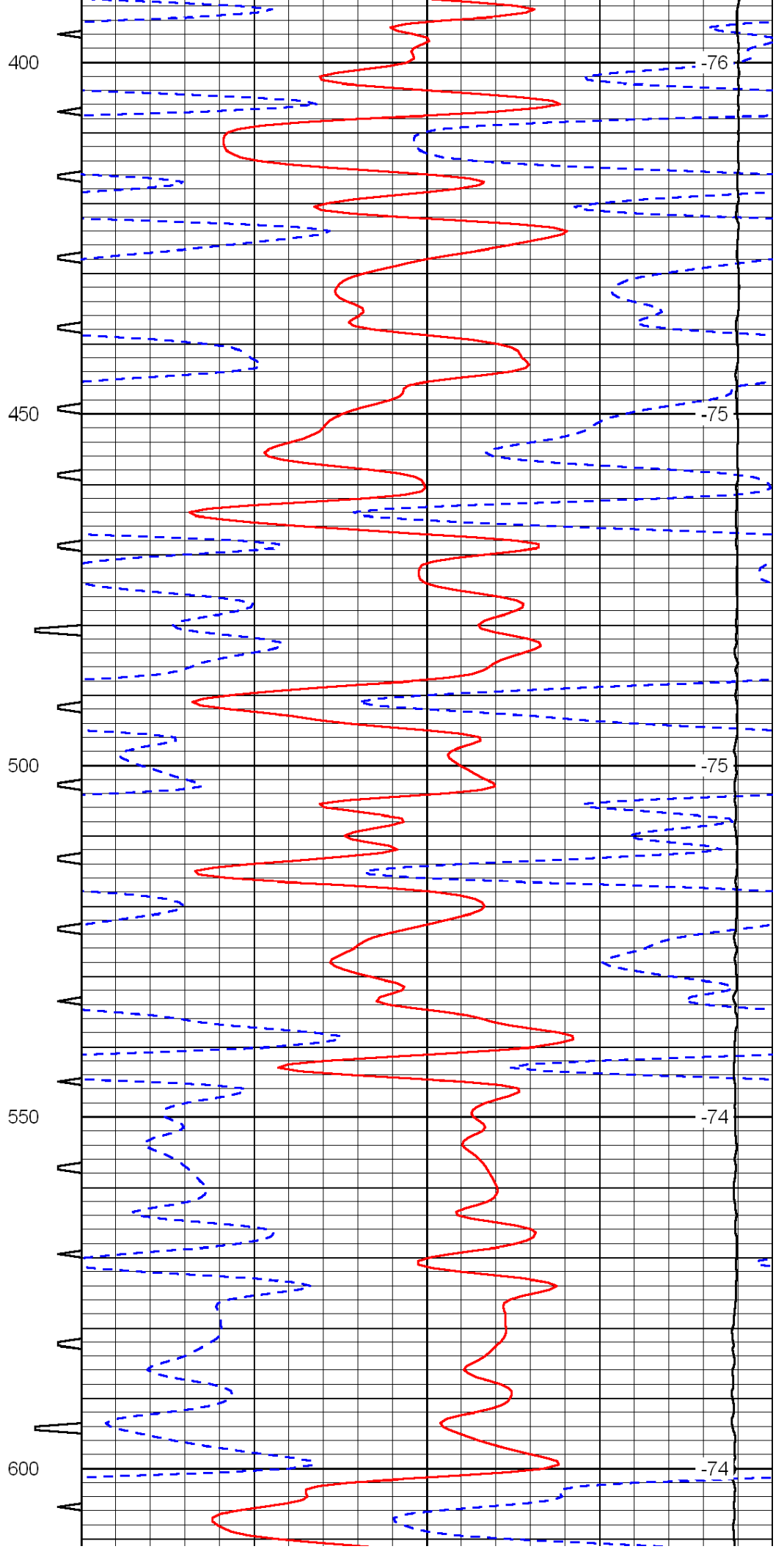
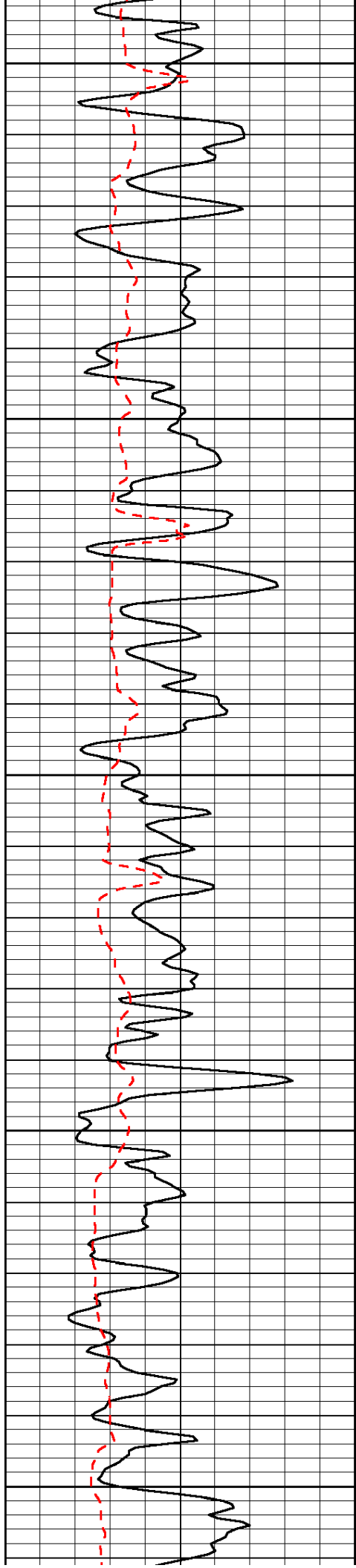
-57

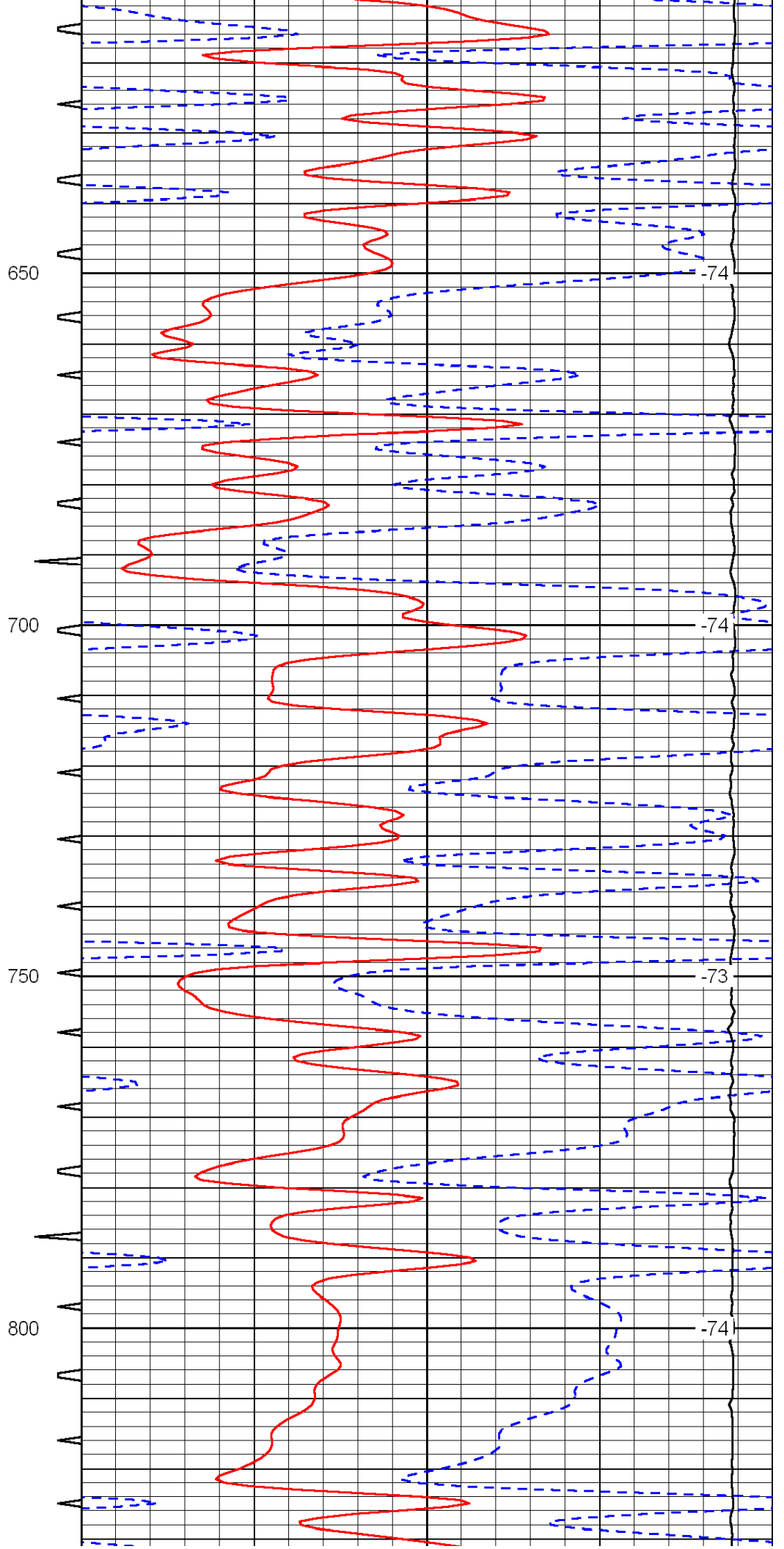
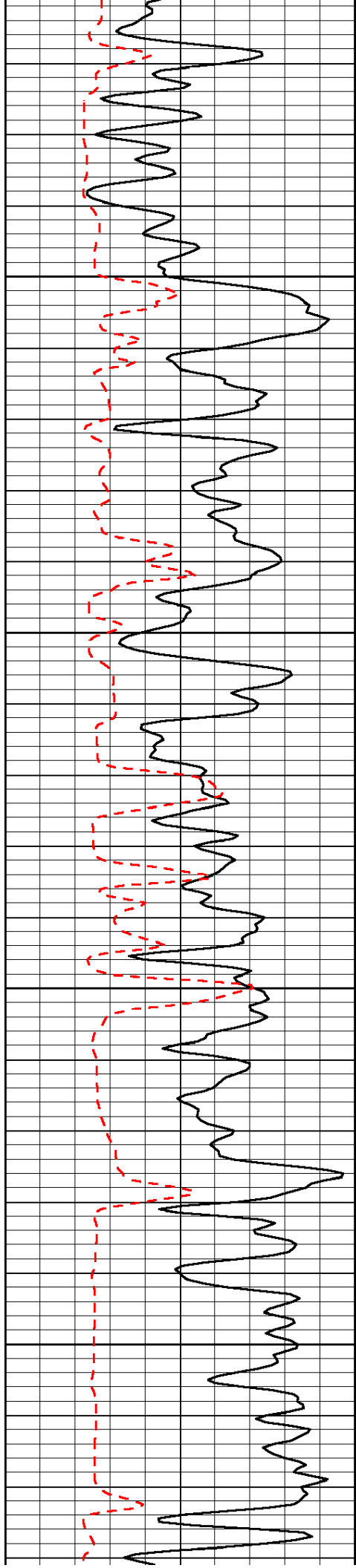
300

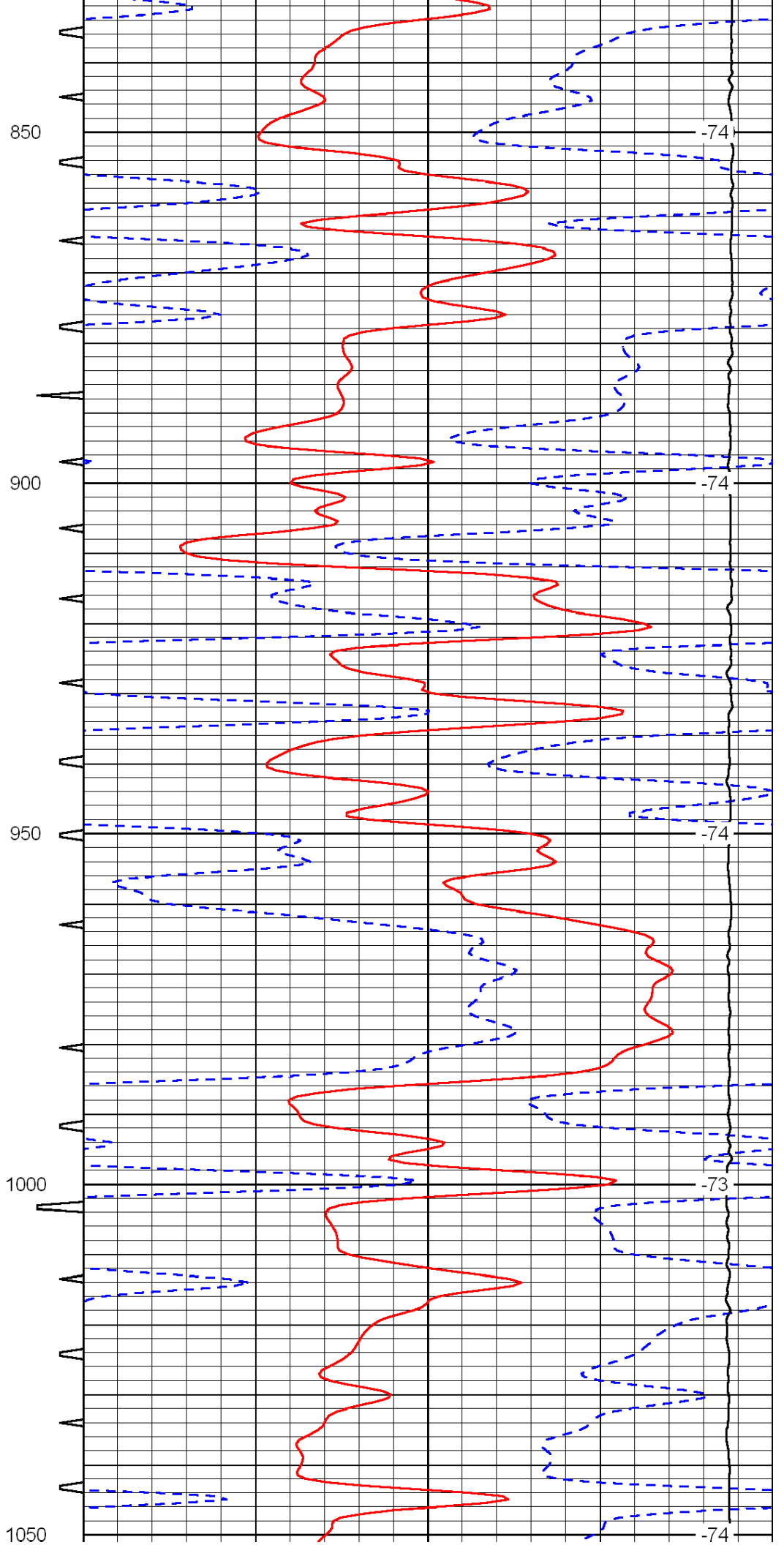
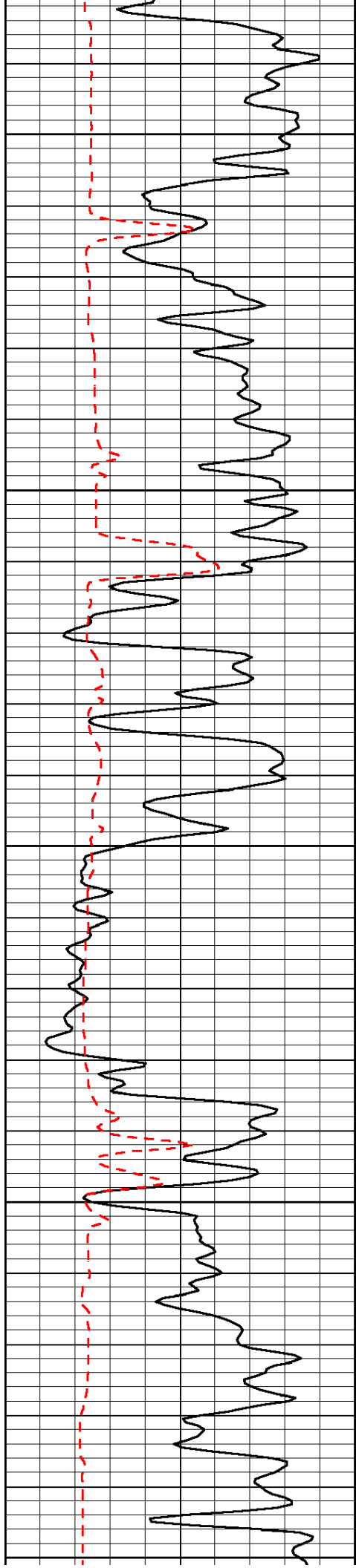
-62

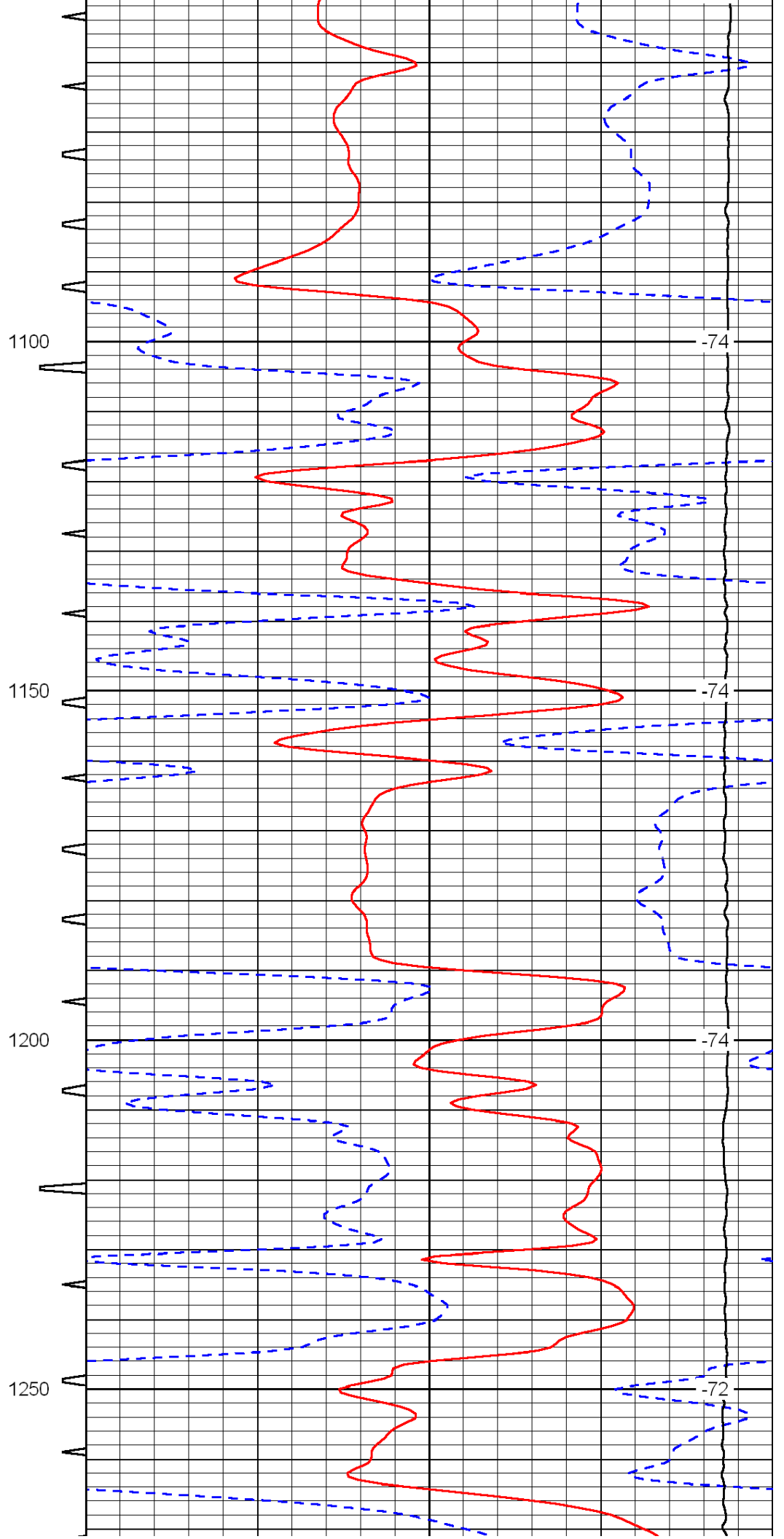
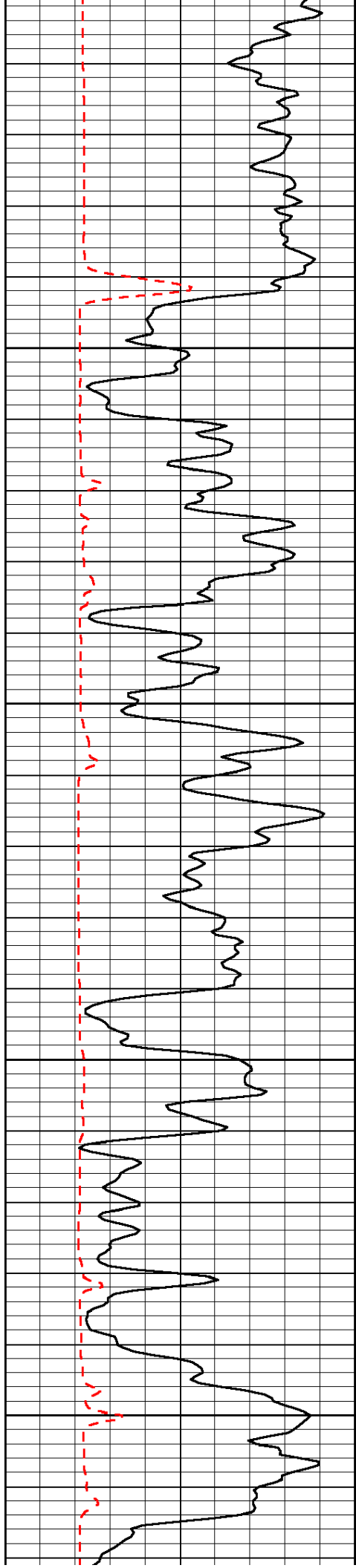
350

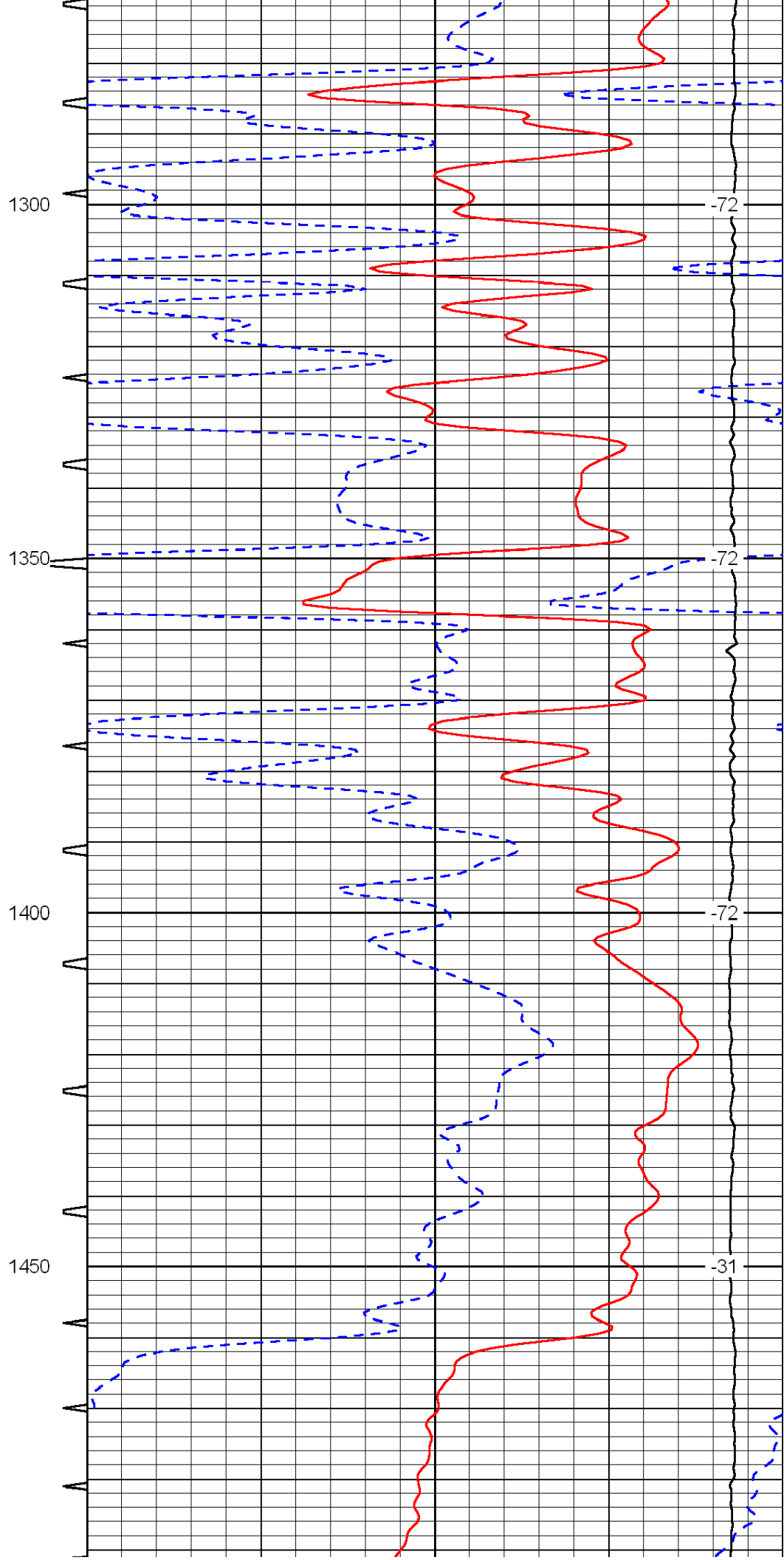
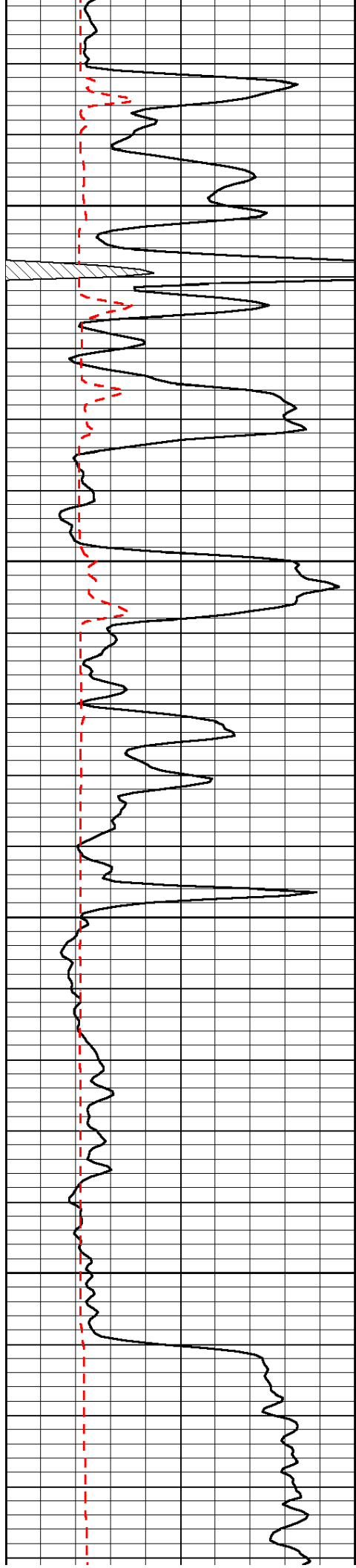
-75

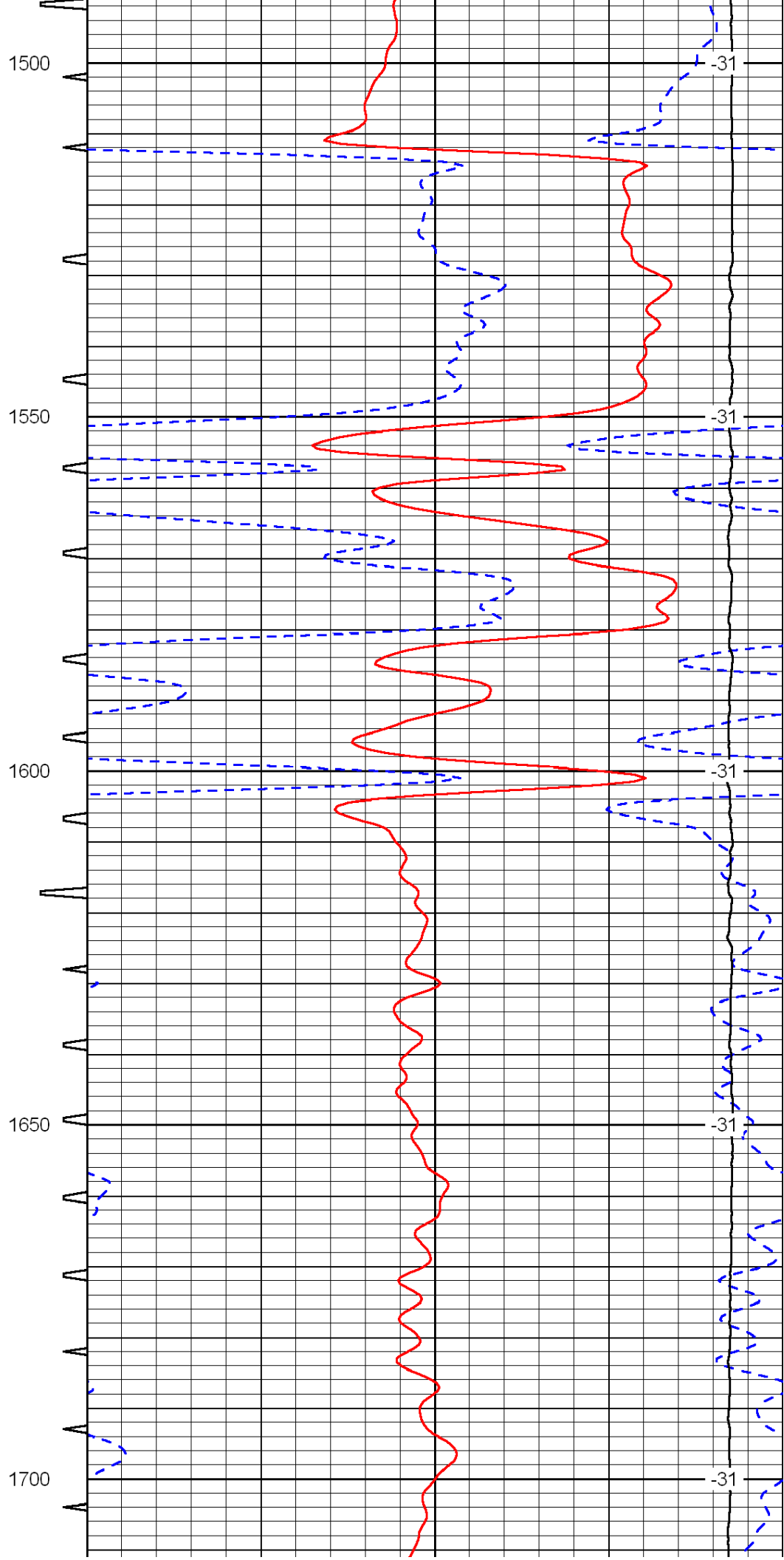
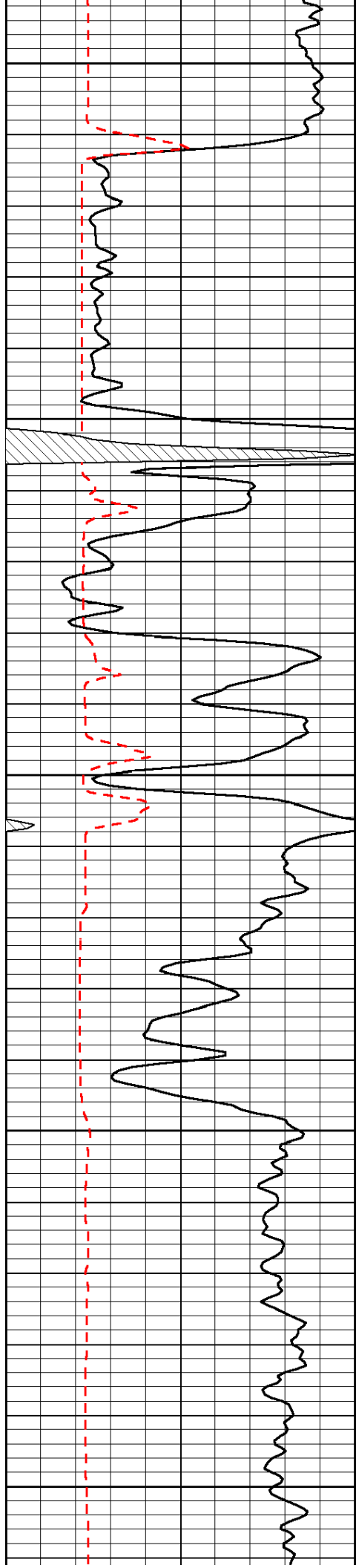


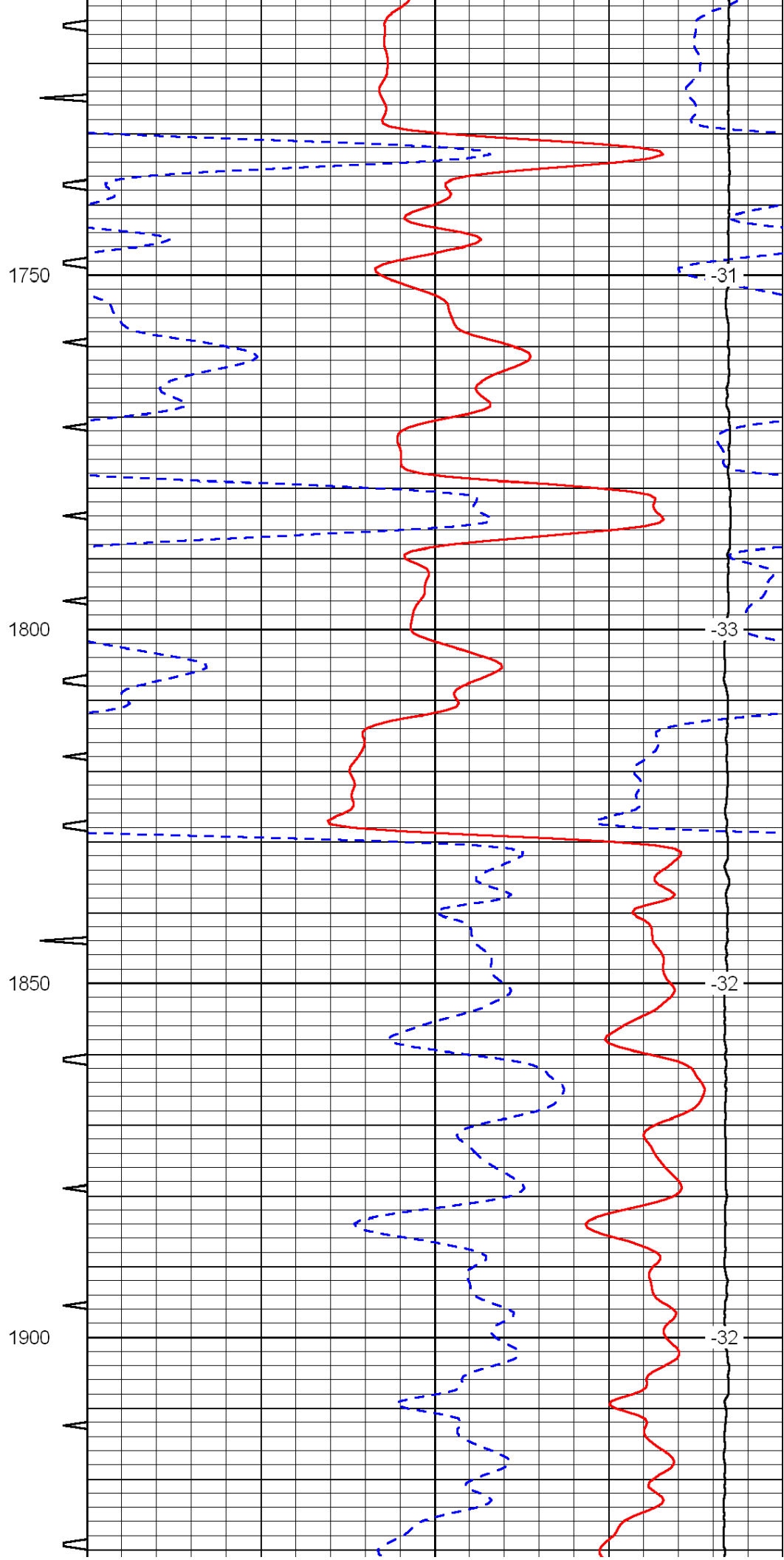
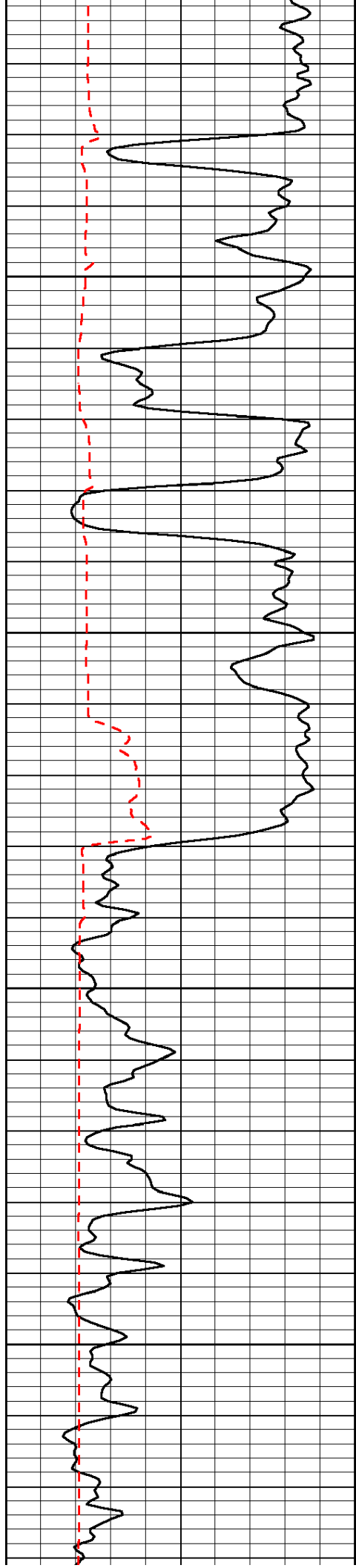


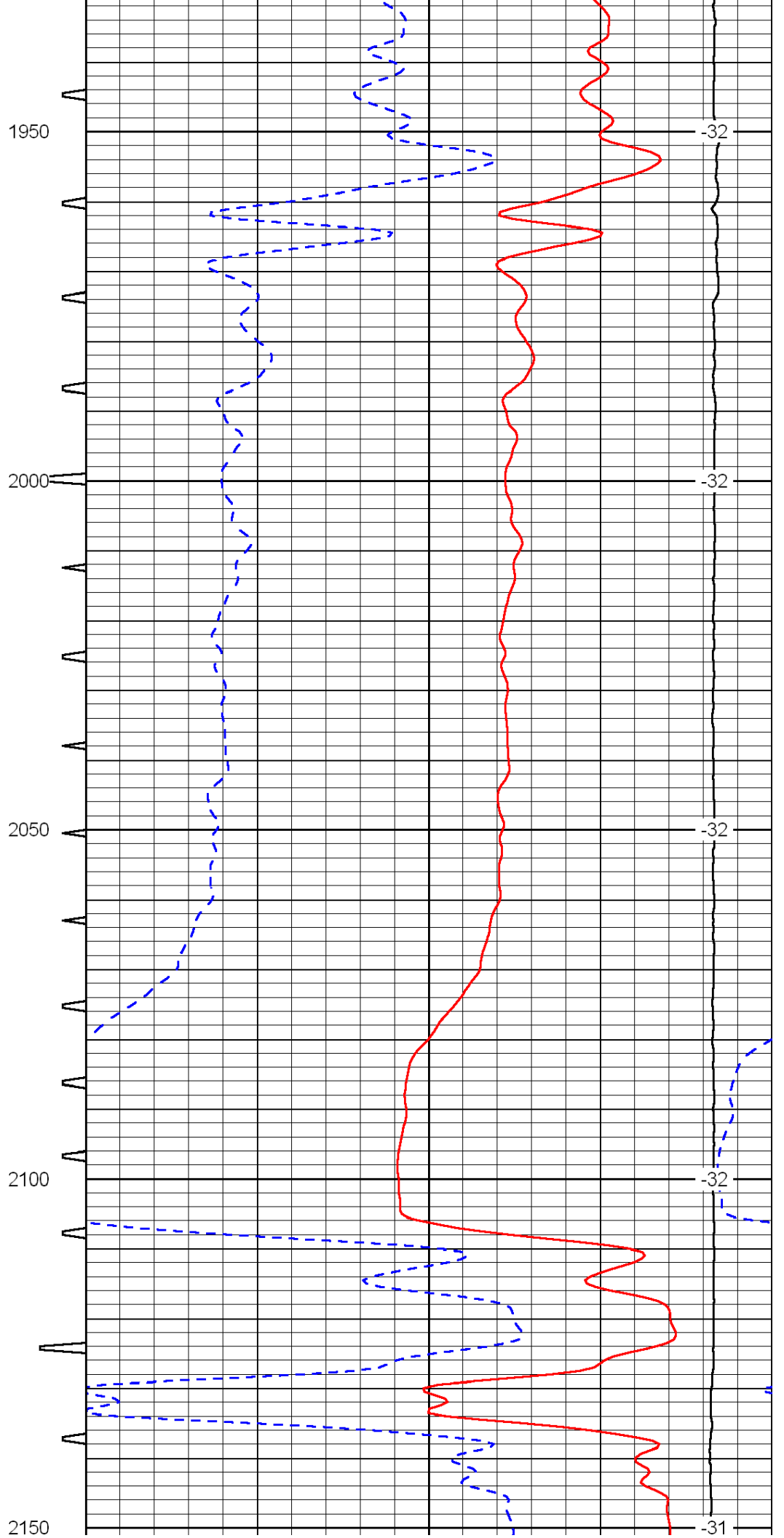
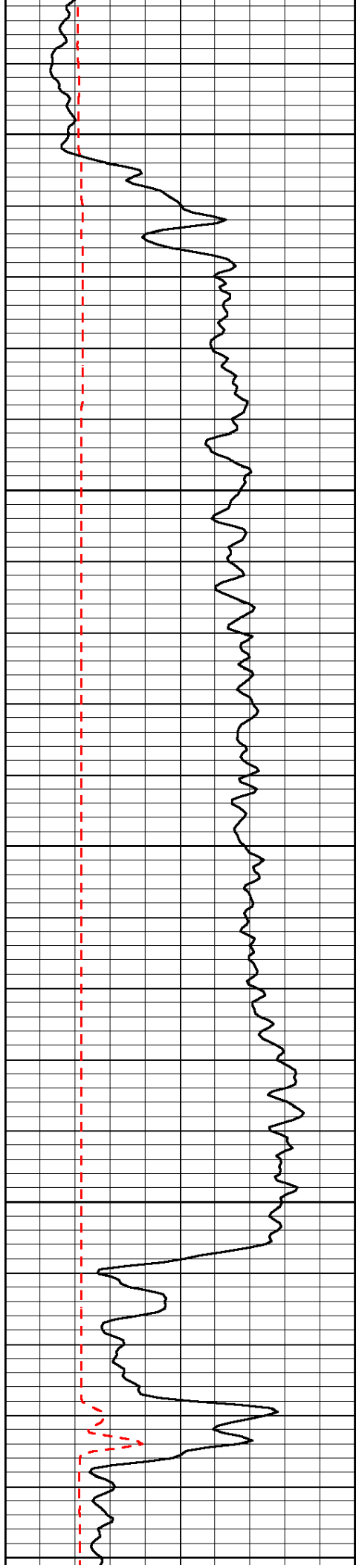


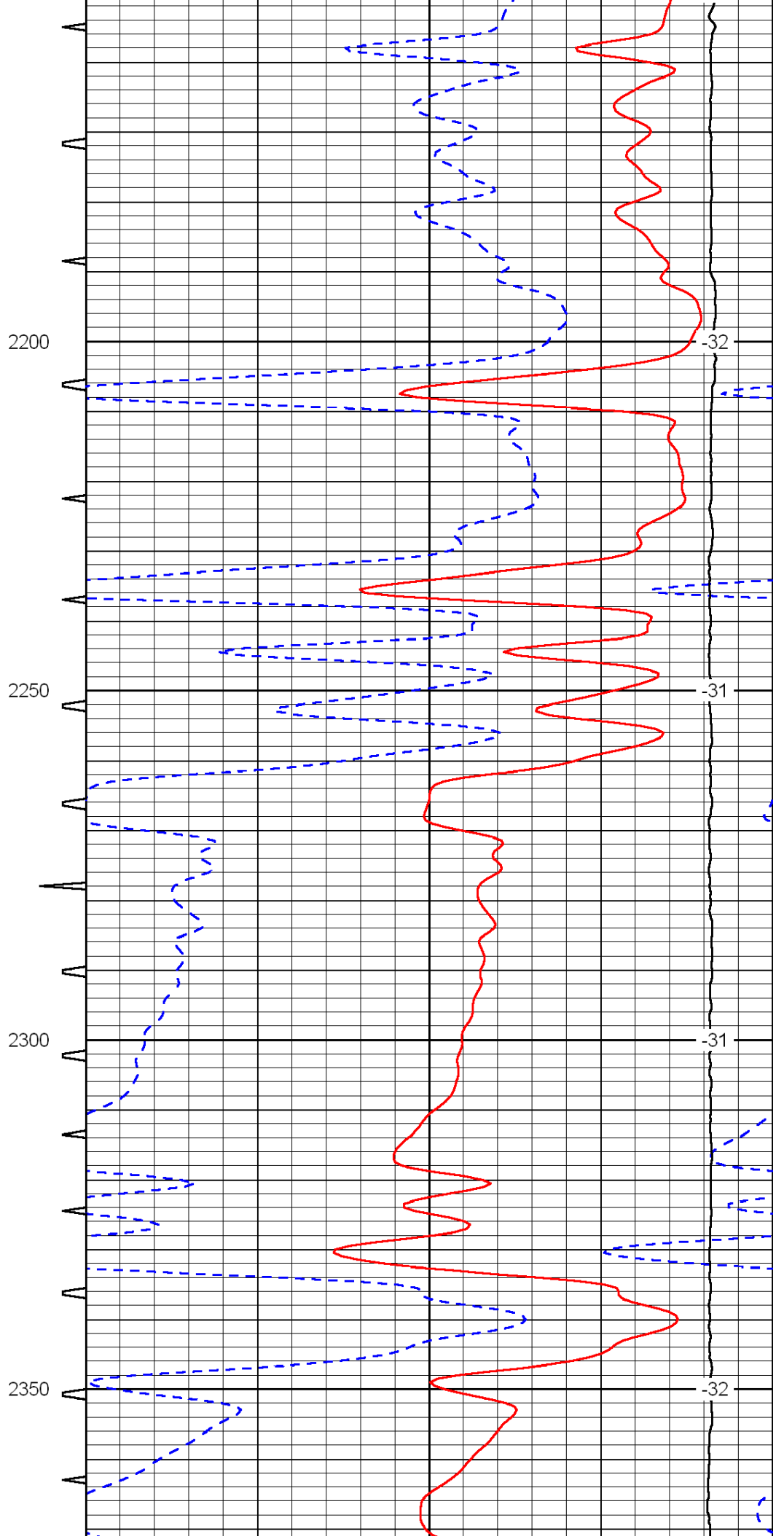
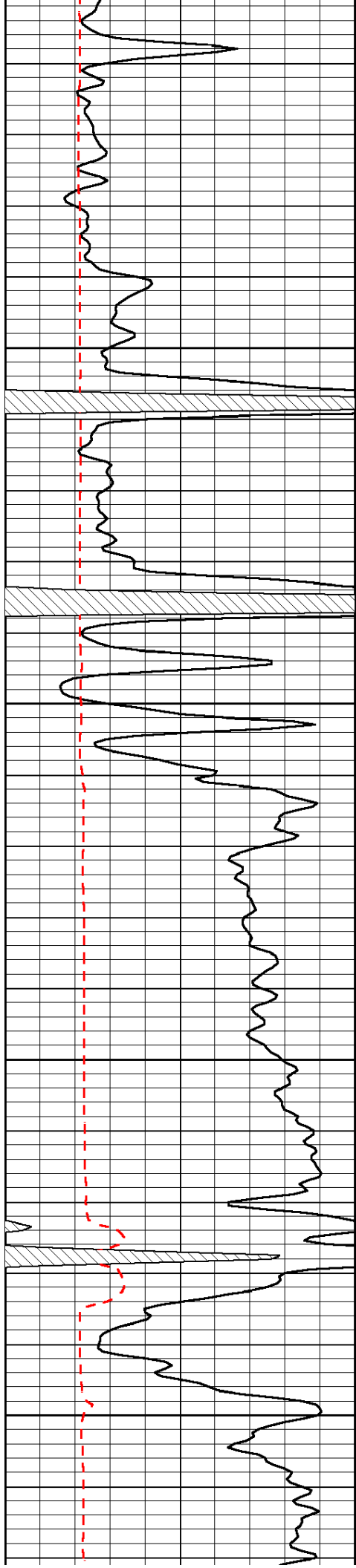


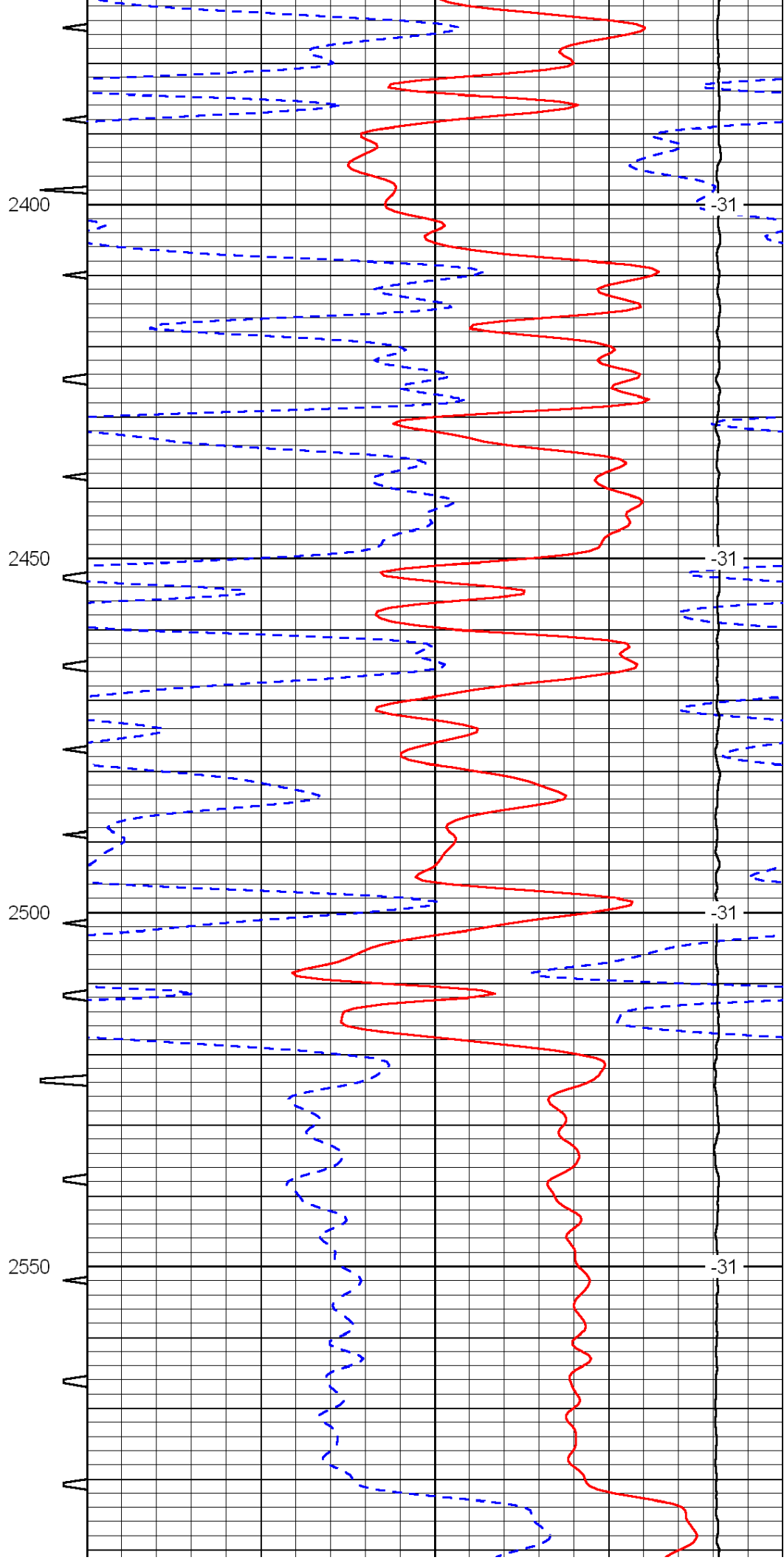
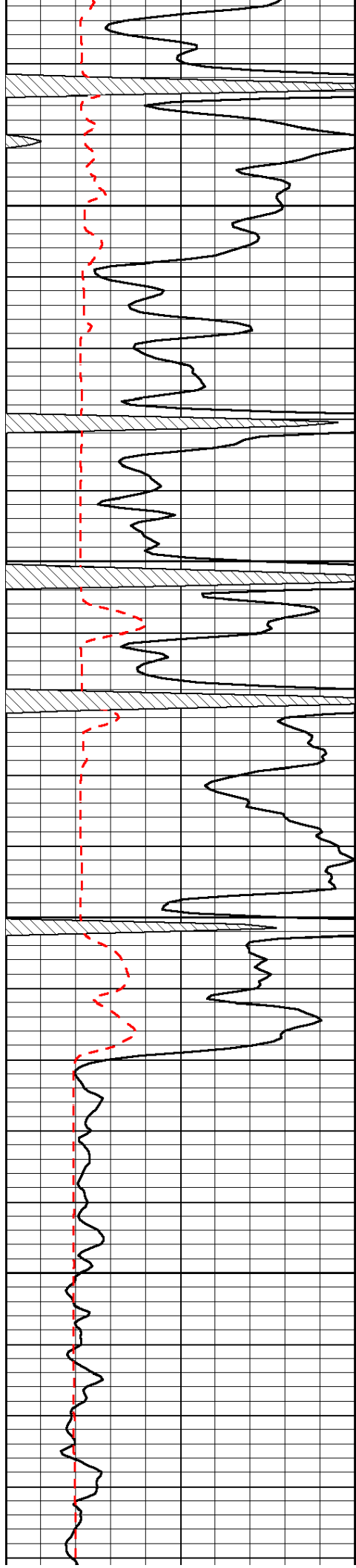


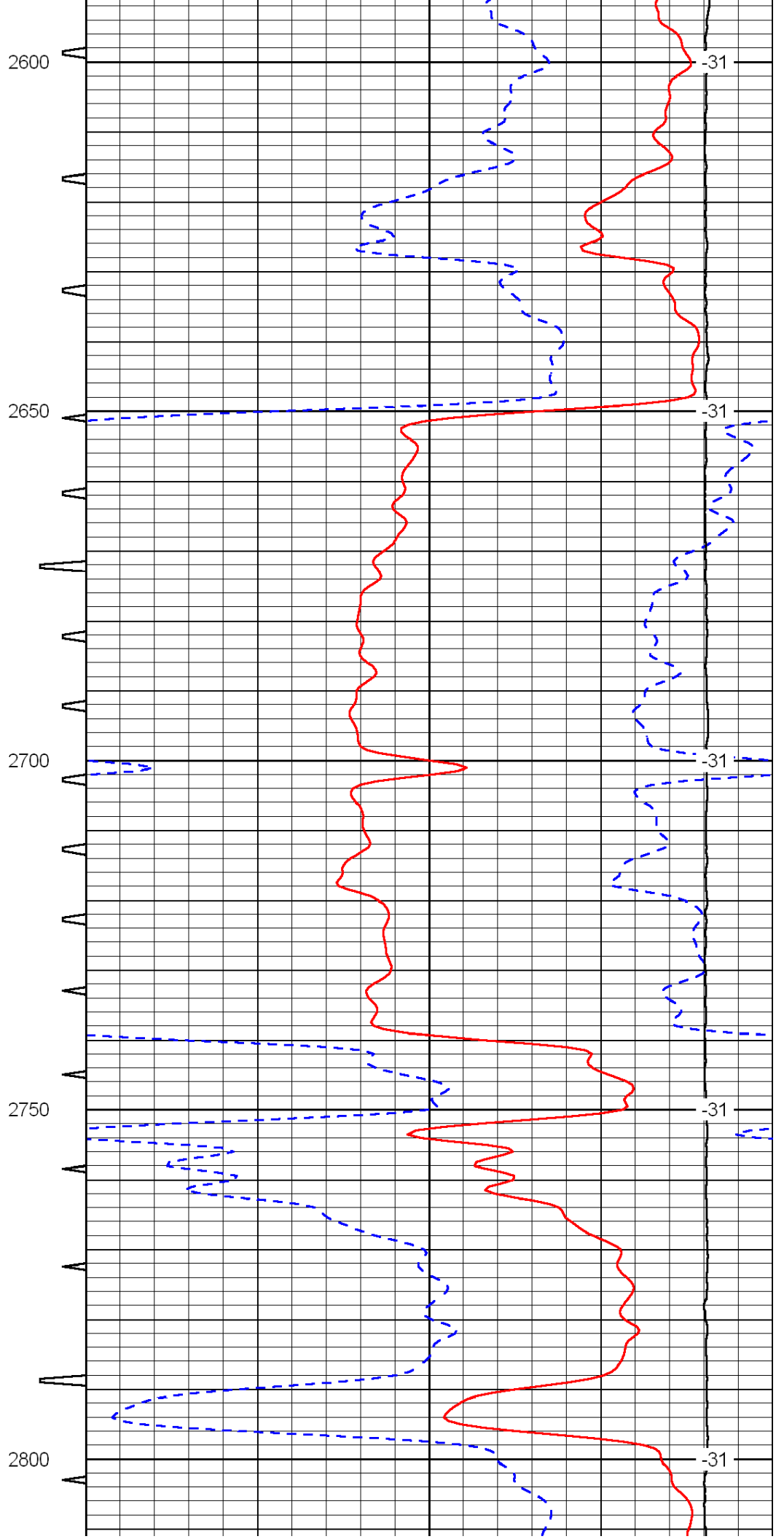
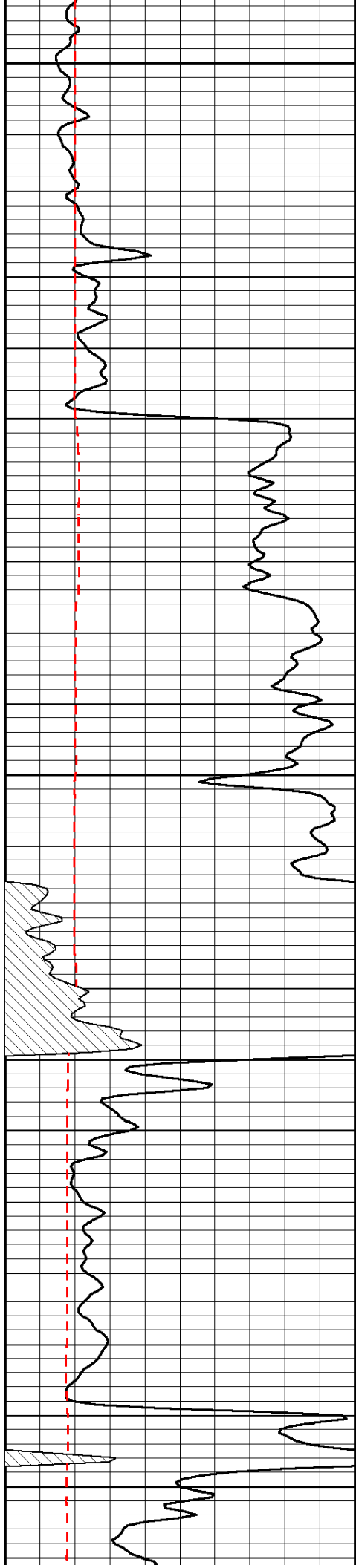


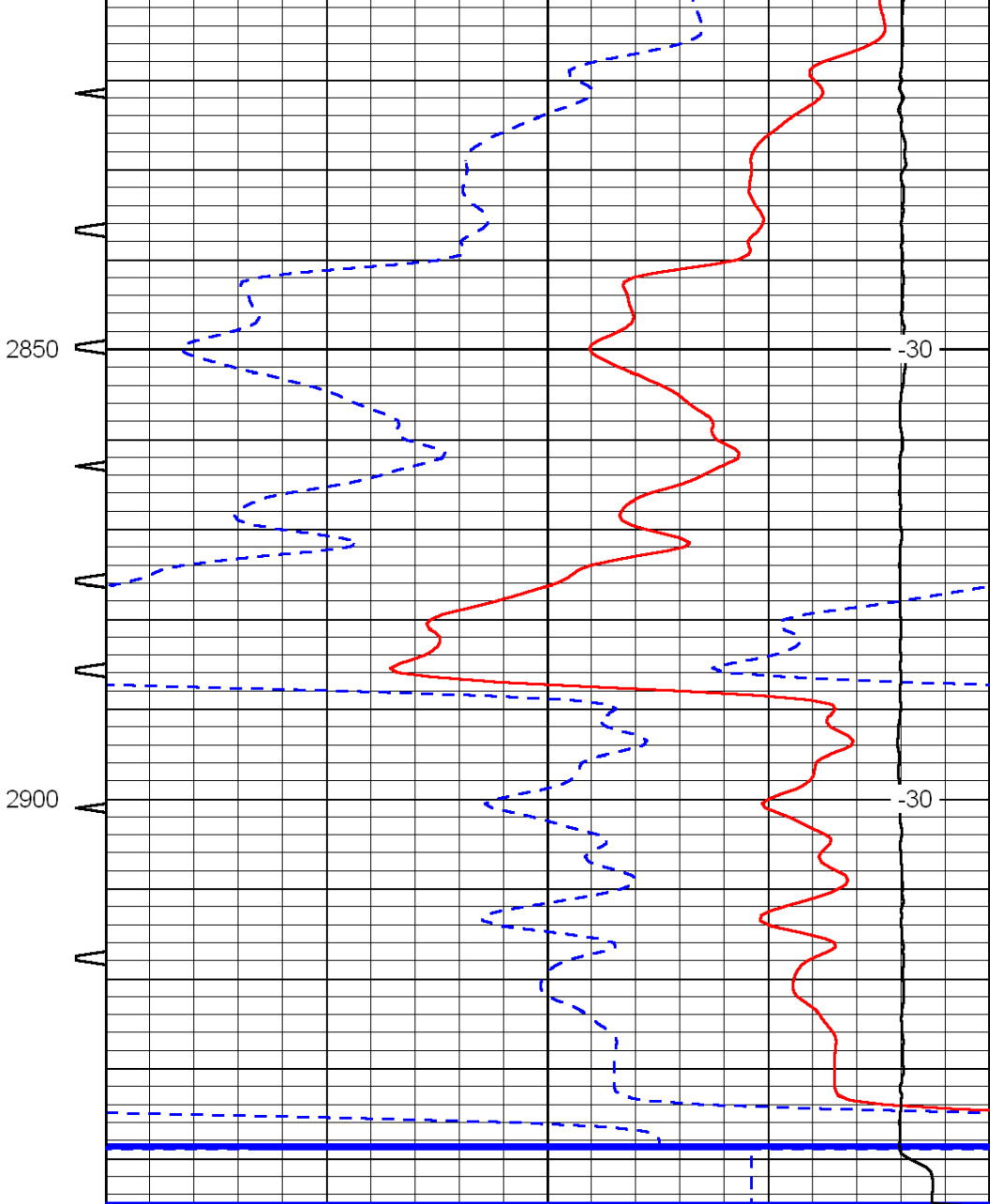
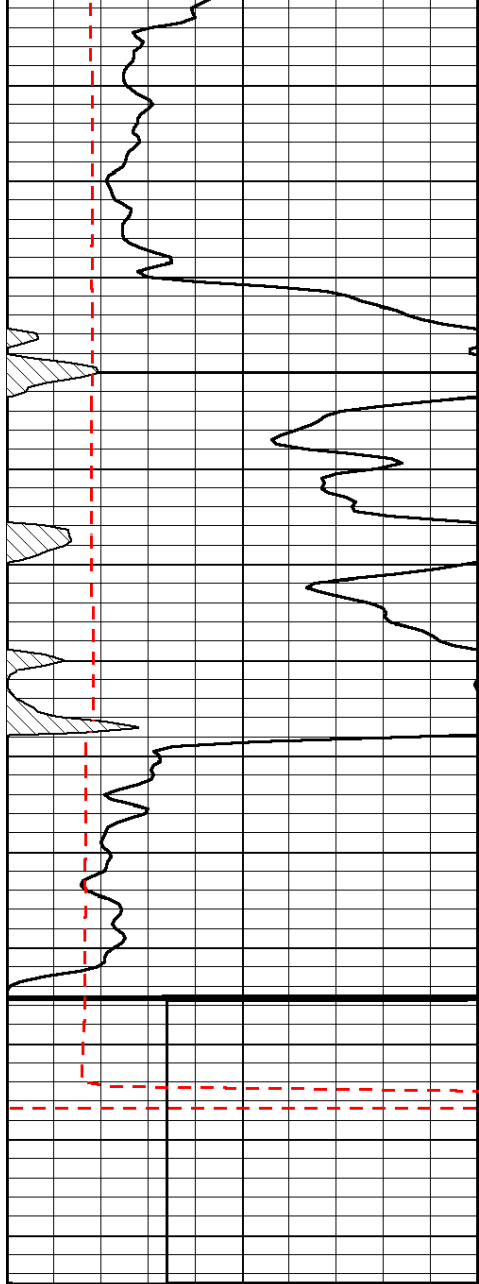












0	Gamma Ray	150	Sonic Int	140	Delta Time (usec/ft)	40
150	Gamma Ray	300	5	0	SPOR	-10
6	Caliper (GAPI)	16		15000	LTEN (lb)	0

LSPD