



**Borehole Compensated
Sonic Log**

DIGITAL LOG (785) 625-3858

API No.	15-195-22,657-00-00		
Company	Murfin Drilling Company, Inc.		
Well	Nimz No. 1-13		
Field	Wildcat		
County	Trego	State	Kansas
Location	1800' FSL & 1180' FWL		
Sec:	13	Twp:	12 S Rge: 24 W
Permanent Datum	Ground Level	Elevation	2426
Log Measured From	Kelly Bushing	11 Ft. Above Perm. Datum	
Drilling Measured From	Kelly Bushing		
Date	5/08/2010	Other Services	CNL/CDL MEL/DIL
Run Number	Two	Elevation	
Type Log	BHC Sonic	K.B.	2437
Depth Driller	4525	D.F.	2426
Depth Logger	4526	G.L.	
Bottom Logged Interval	4515		
Top Logged Interval	200		
Type Fluid In Hole	Chemical		
Salinity, PPM CL	5,600		
Density	9.3		
Level	Full		
Max. Rec. Temp. F	123		
Operating Rig Time	5 Hours		
Equipment -- Location	007 Hays		
Recorded By	K. Bange		
Witnessed By	Kent Crisler		

Borehole Record				Casing Record			
Run No.	Bit	From	To	Size	Wgt.	From	To
1	12.25	00	225	8.625	24#	00	225
2	7.875	225	4525				

<<< Fold Here >>>

All interpretations are opinions based on inferences from electrical or other measurements and we cannot and do not guarantee the accuracy or correctness of any interpretation, and we shall not, except in the case of gross or willful negligence on our part, be liable or responsible for any loss, costs, damages, or expenses incurred or sustained by anyone resulting from any interpretation made by any of our officers, agents or employees. These interpretations are also subject to our general terms and conditions set out in our current Price Schedule.

Comments

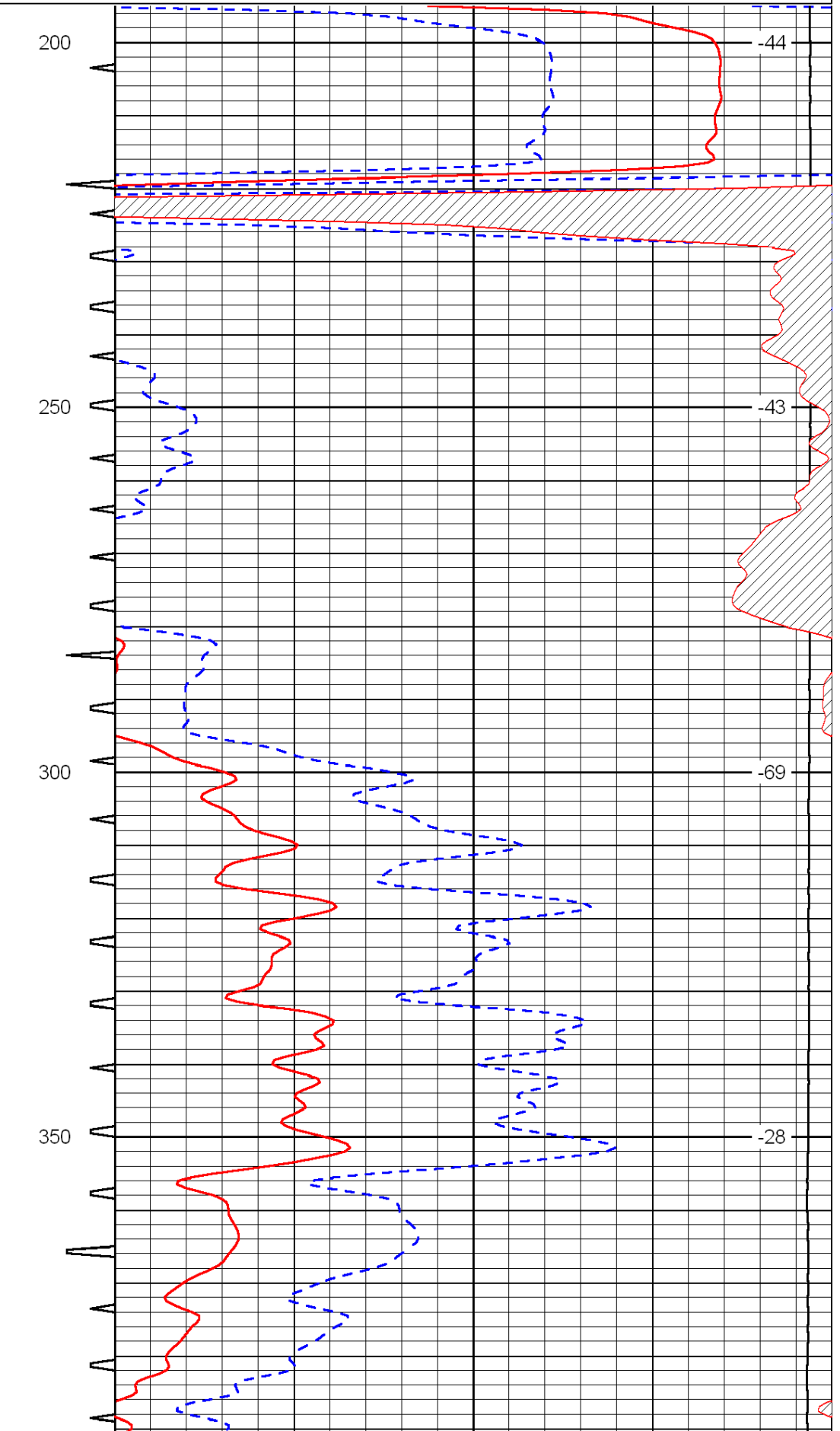
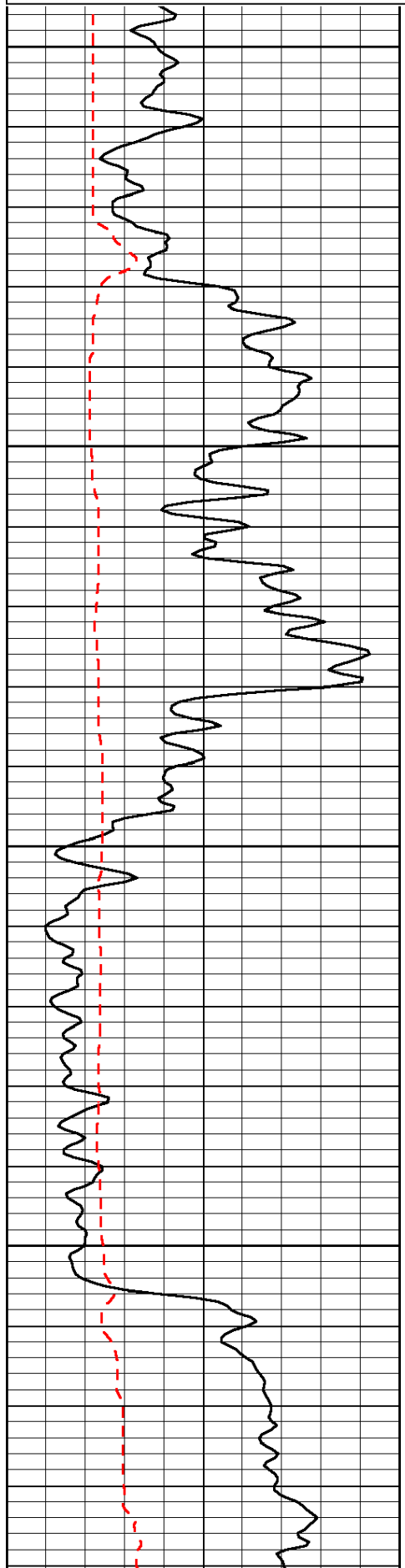
Thank you for using Log-Tech, Inc.
(785) 625-3858

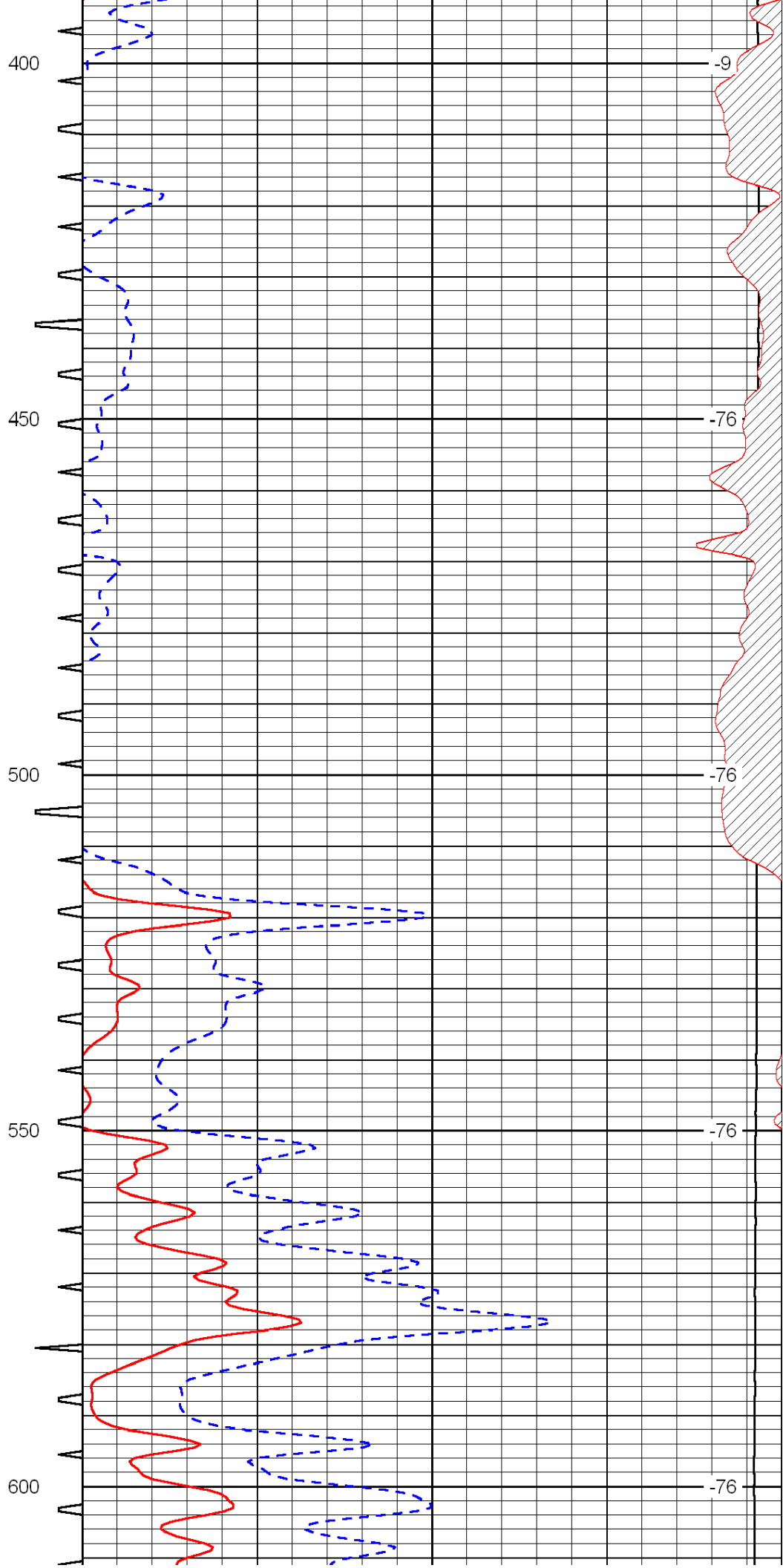
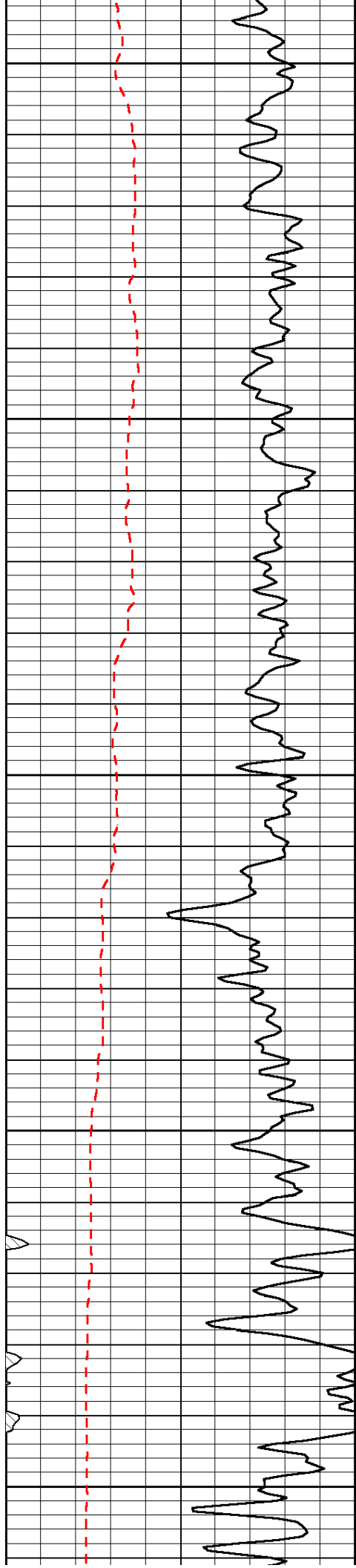
1-70 and exit 127 (Wakeeney) S 100' to I rd, W 2 1/2 to 200 rd, S 1/2, E into

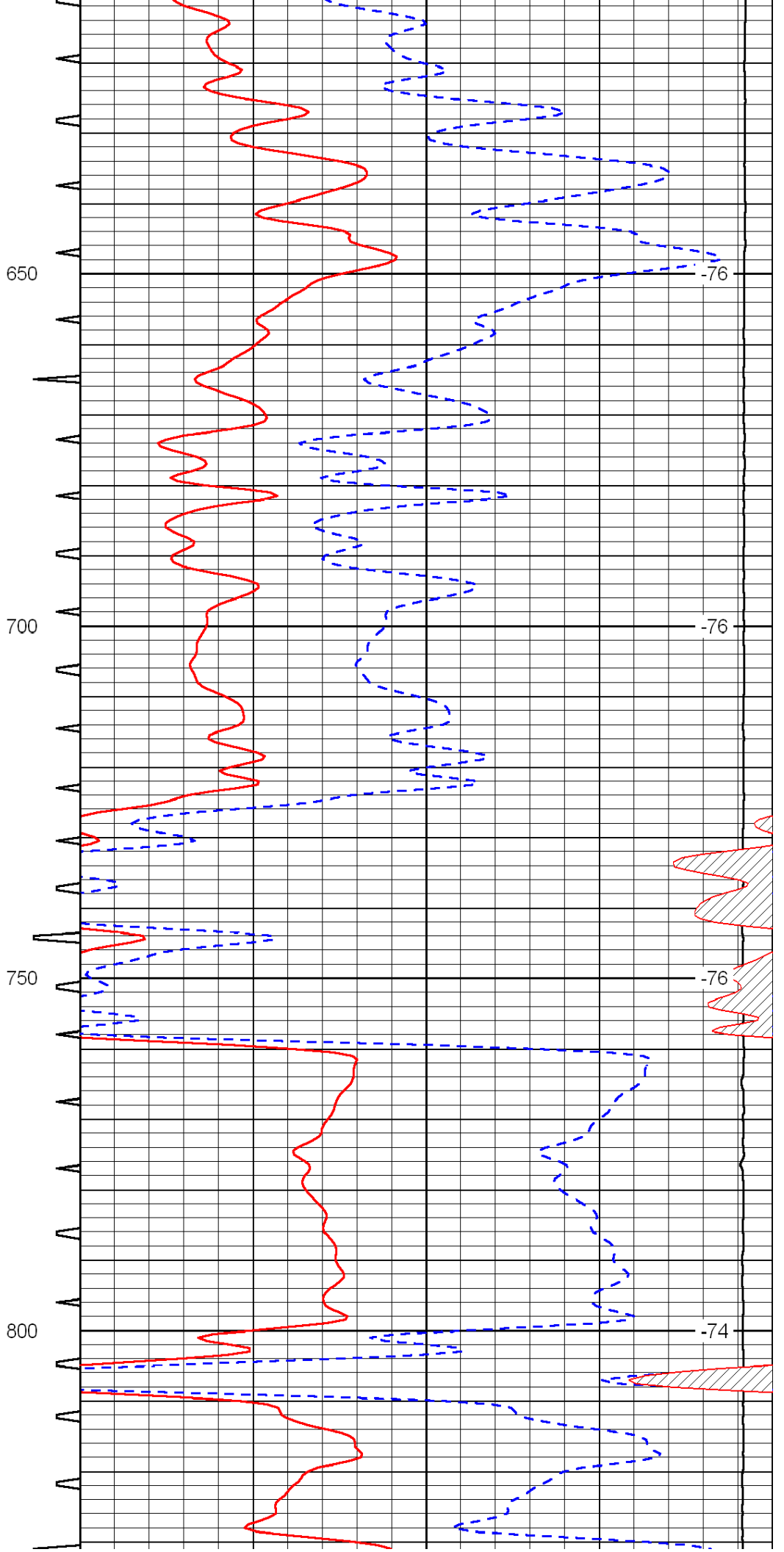
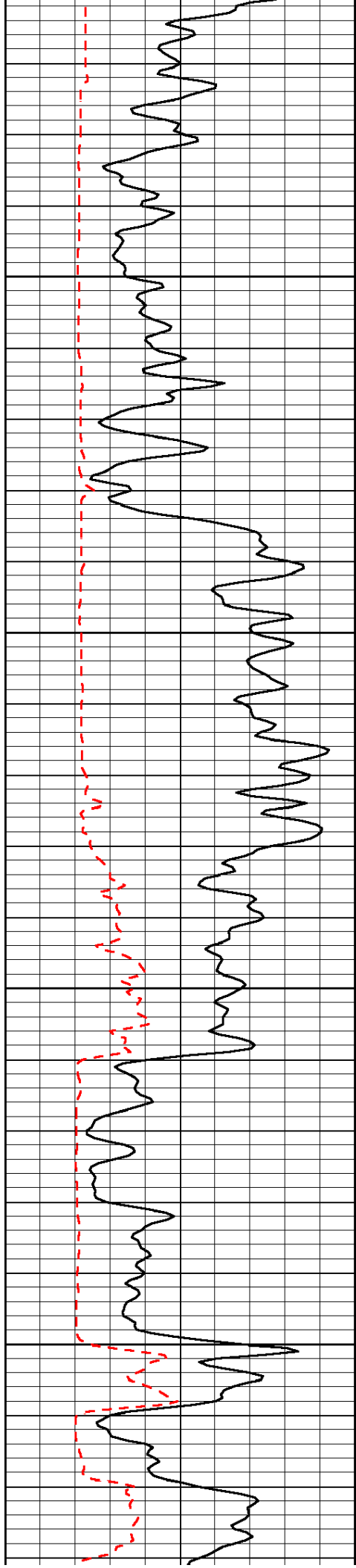
Database File: c:\warrior\data\murfin_nimz no. 1-13\murfnhd.db
 Dataset Pathname: dil/murf2in
 Presentation Format: sonic
 Dataset Creation: Sat May 08 04:48:31 2010
 Charted by: Depth in Feet scaled 1:240

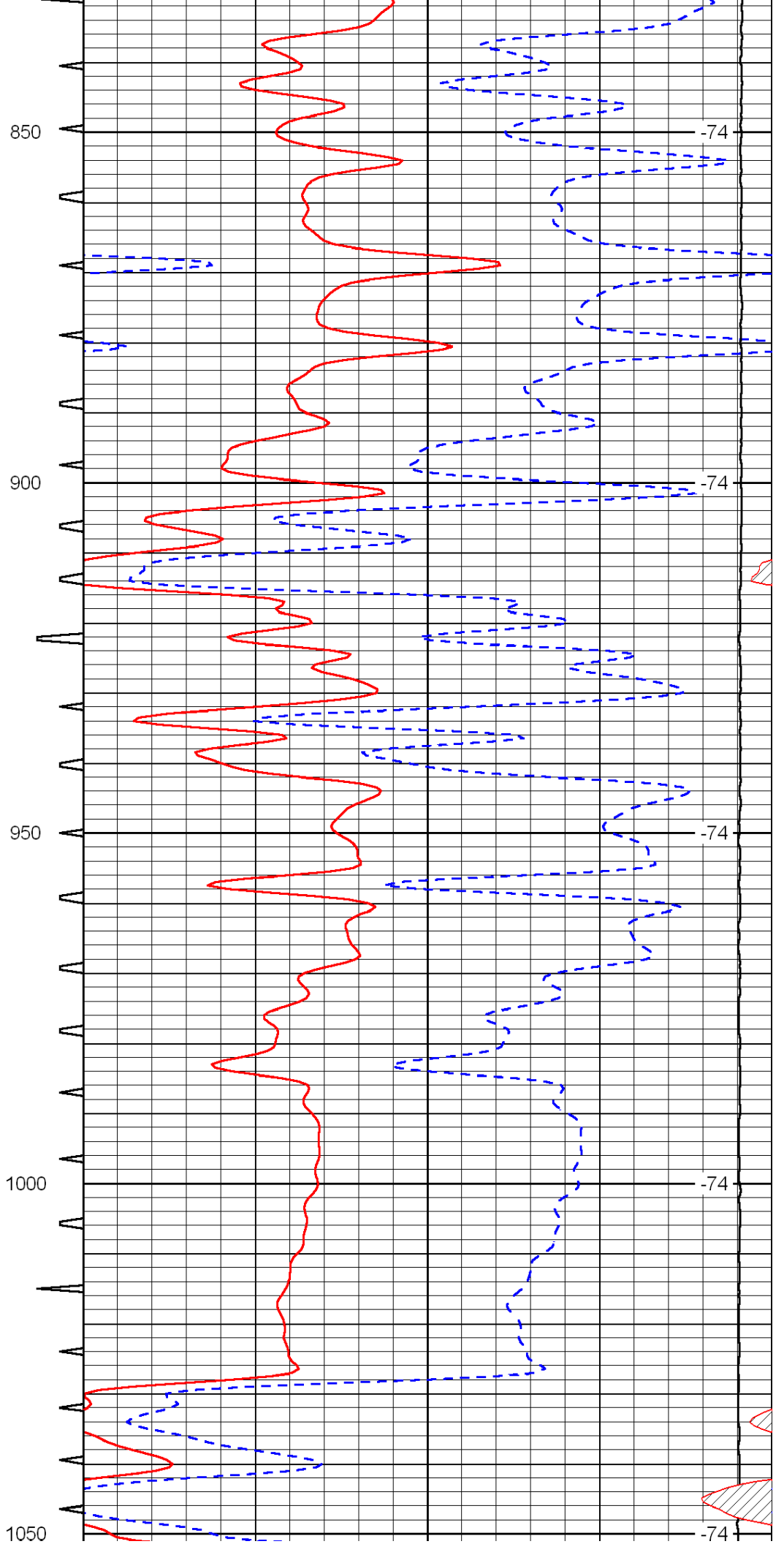
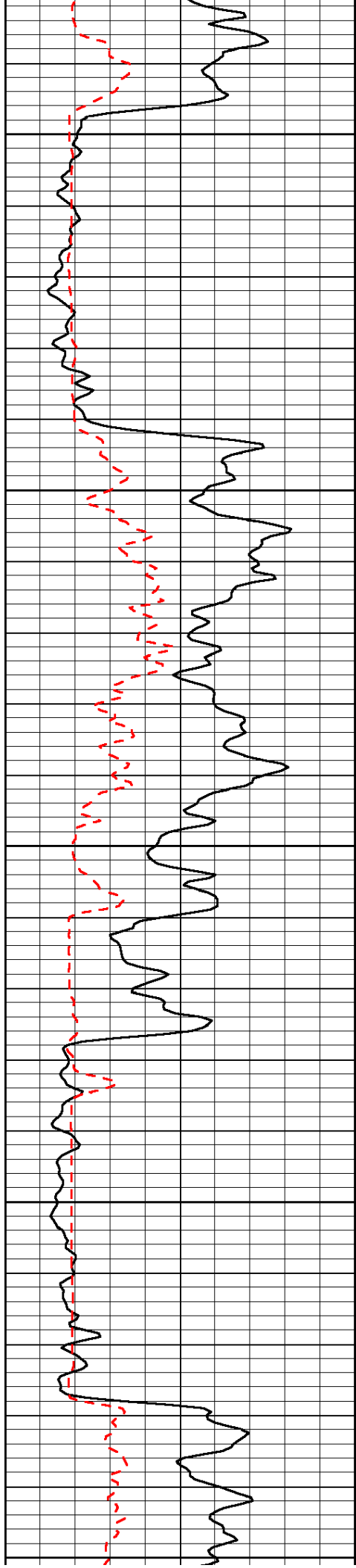
0	Gamma Ray	150	Sonic Int	140	Delta Time (usec/ft)	40
150	Gamma Ray	300	5	0	SPOR	-10
6	Caliper (GAPI)	16		15000	LTEN (lb)	0

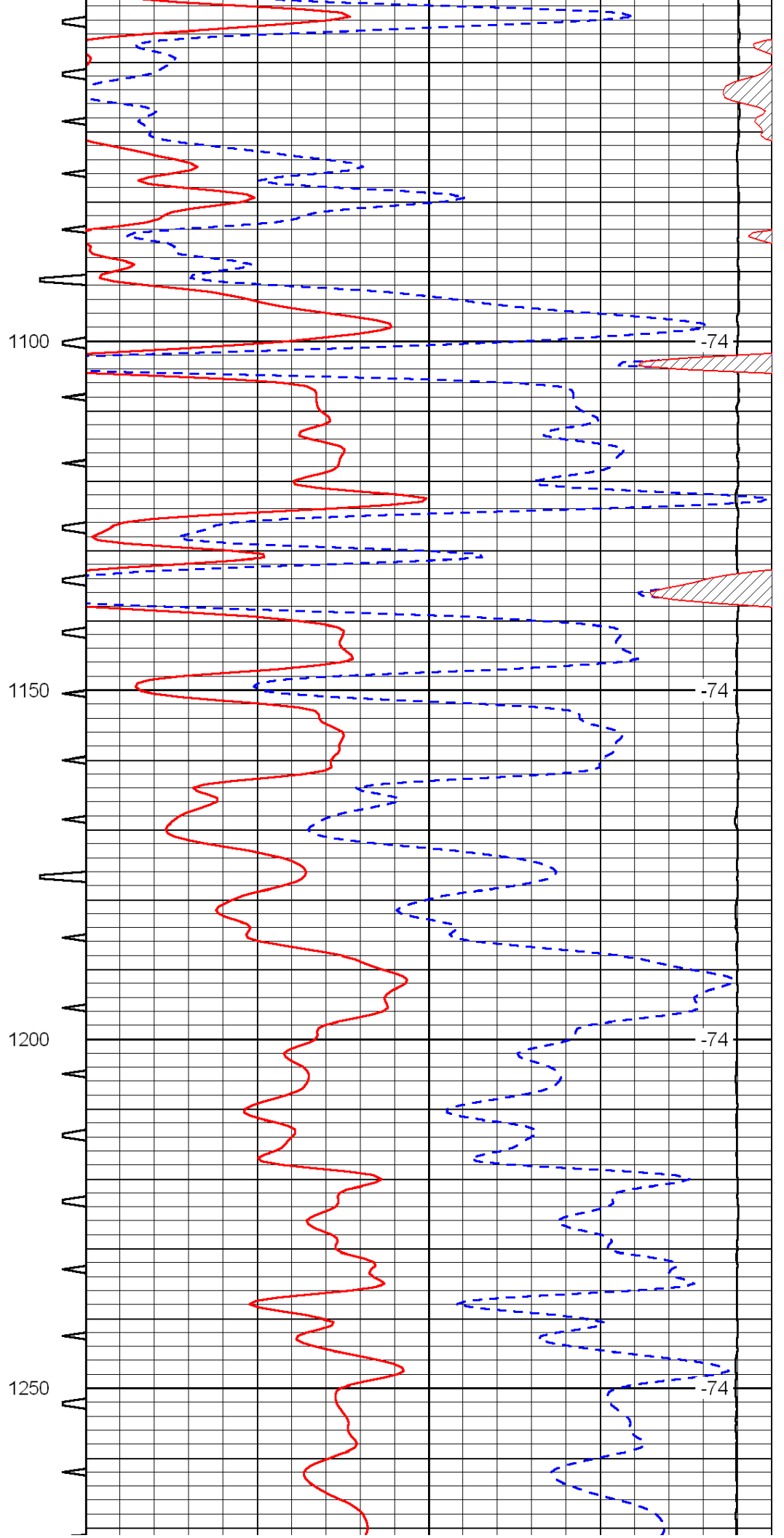
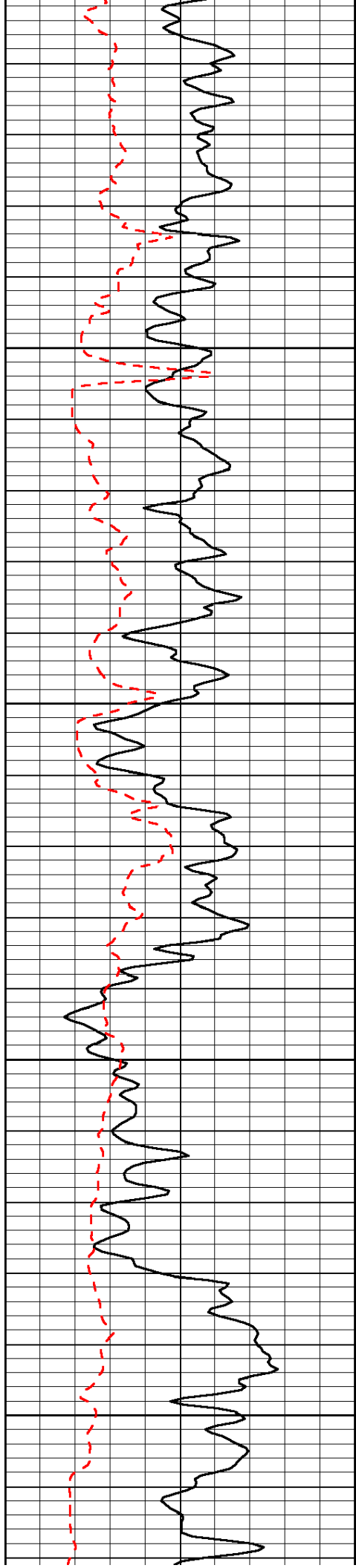
LSPD

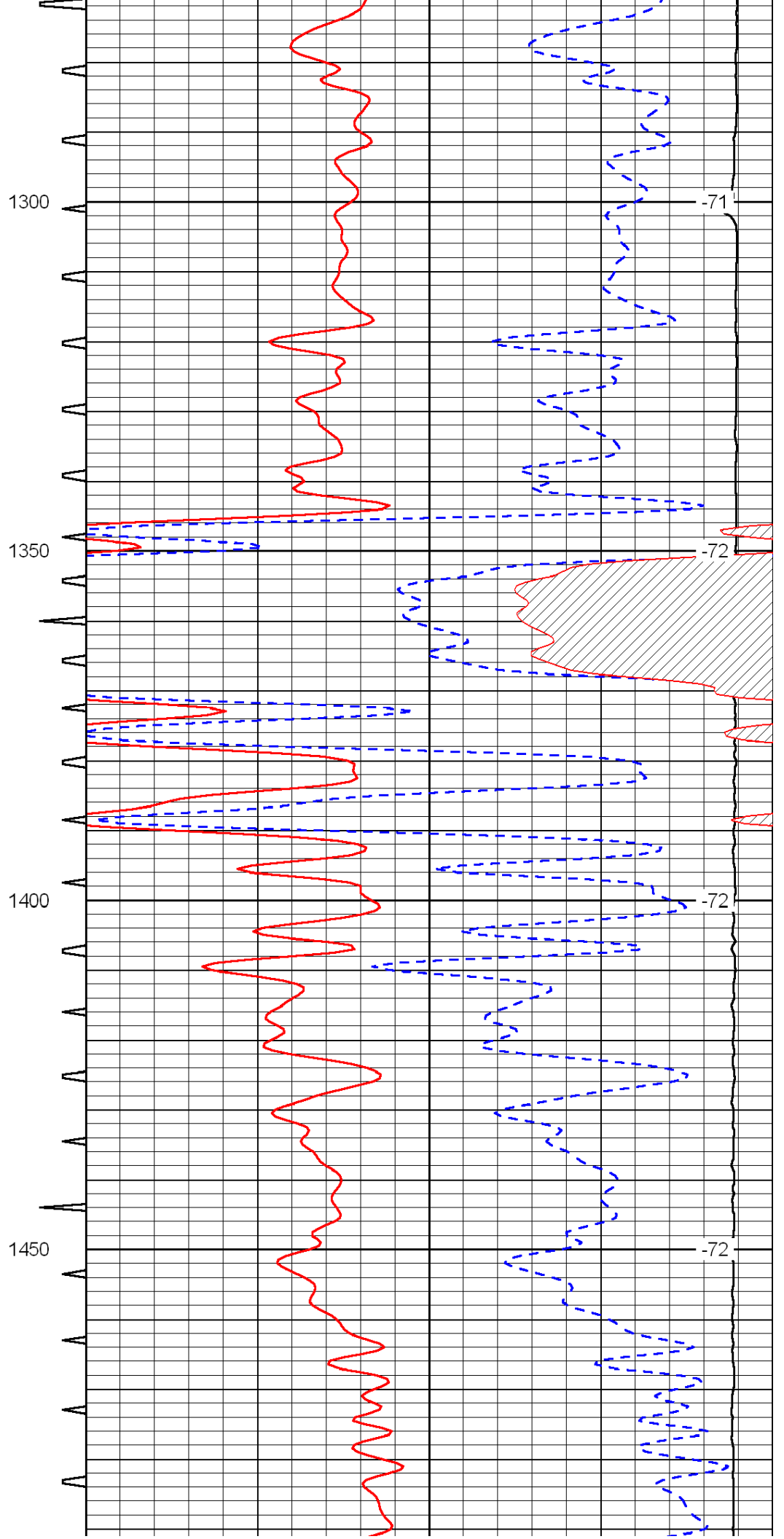
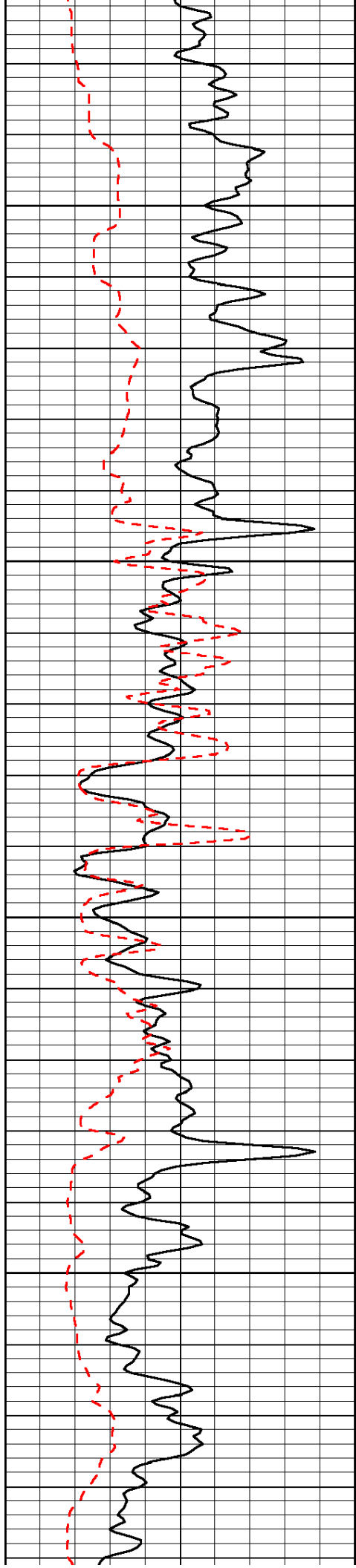


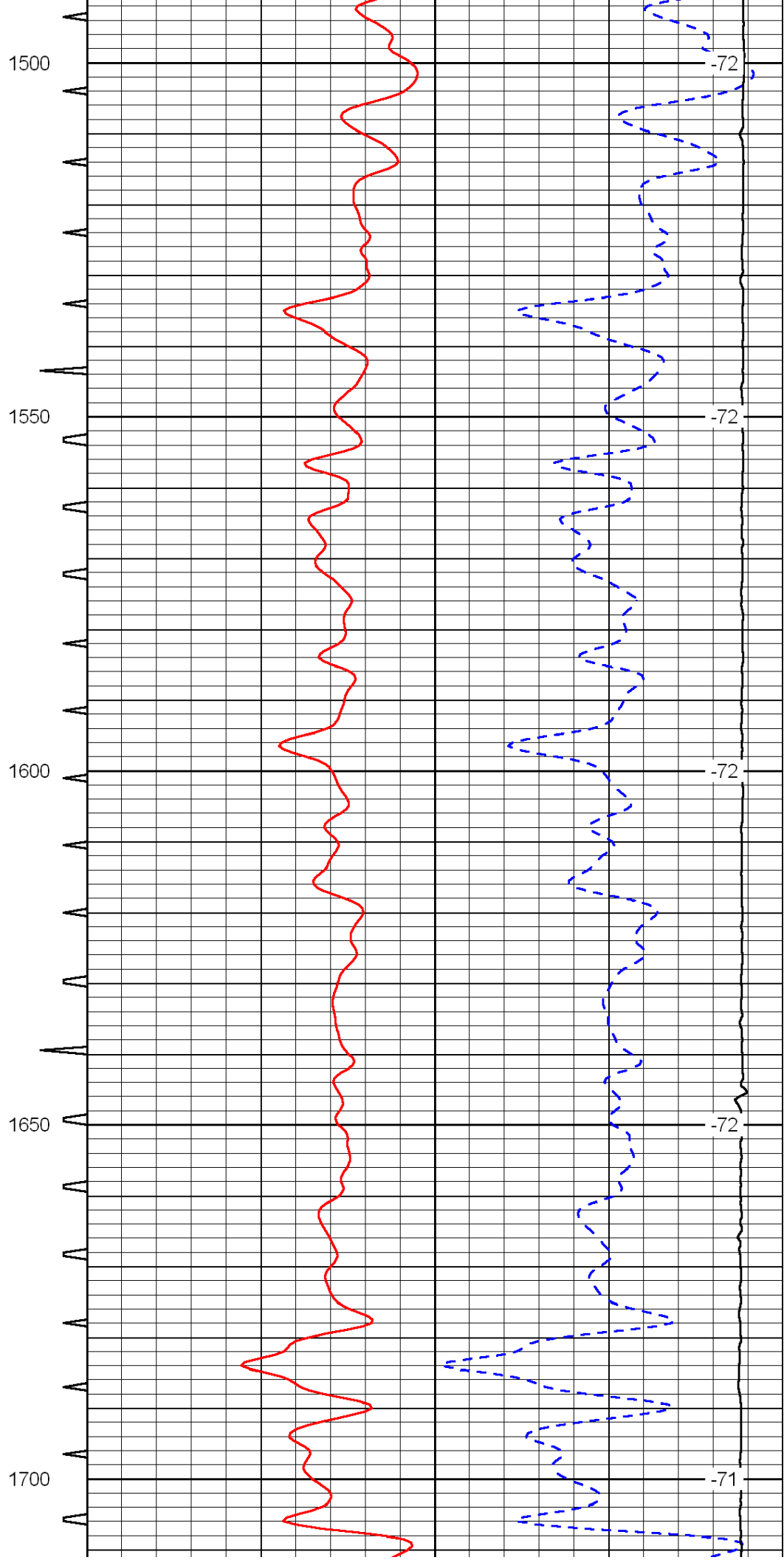
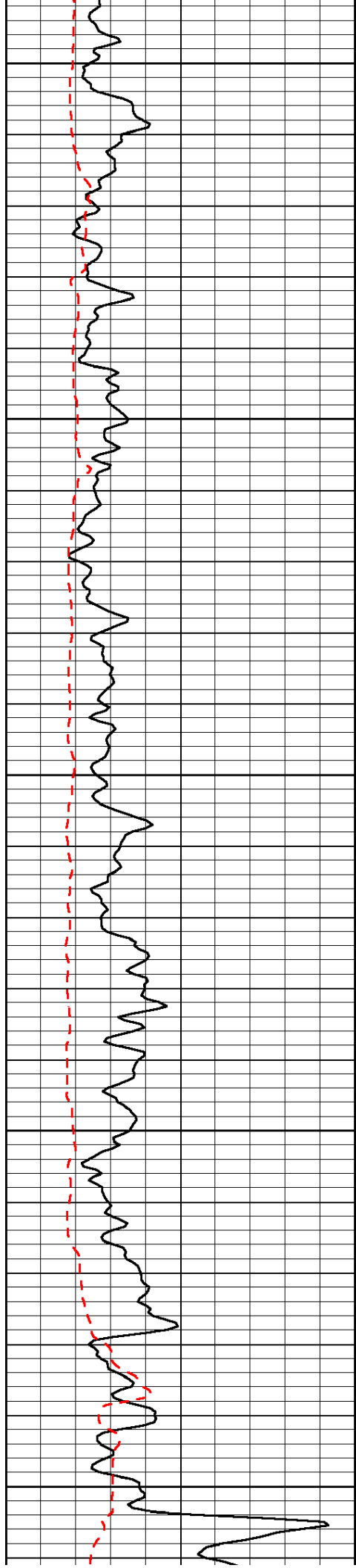


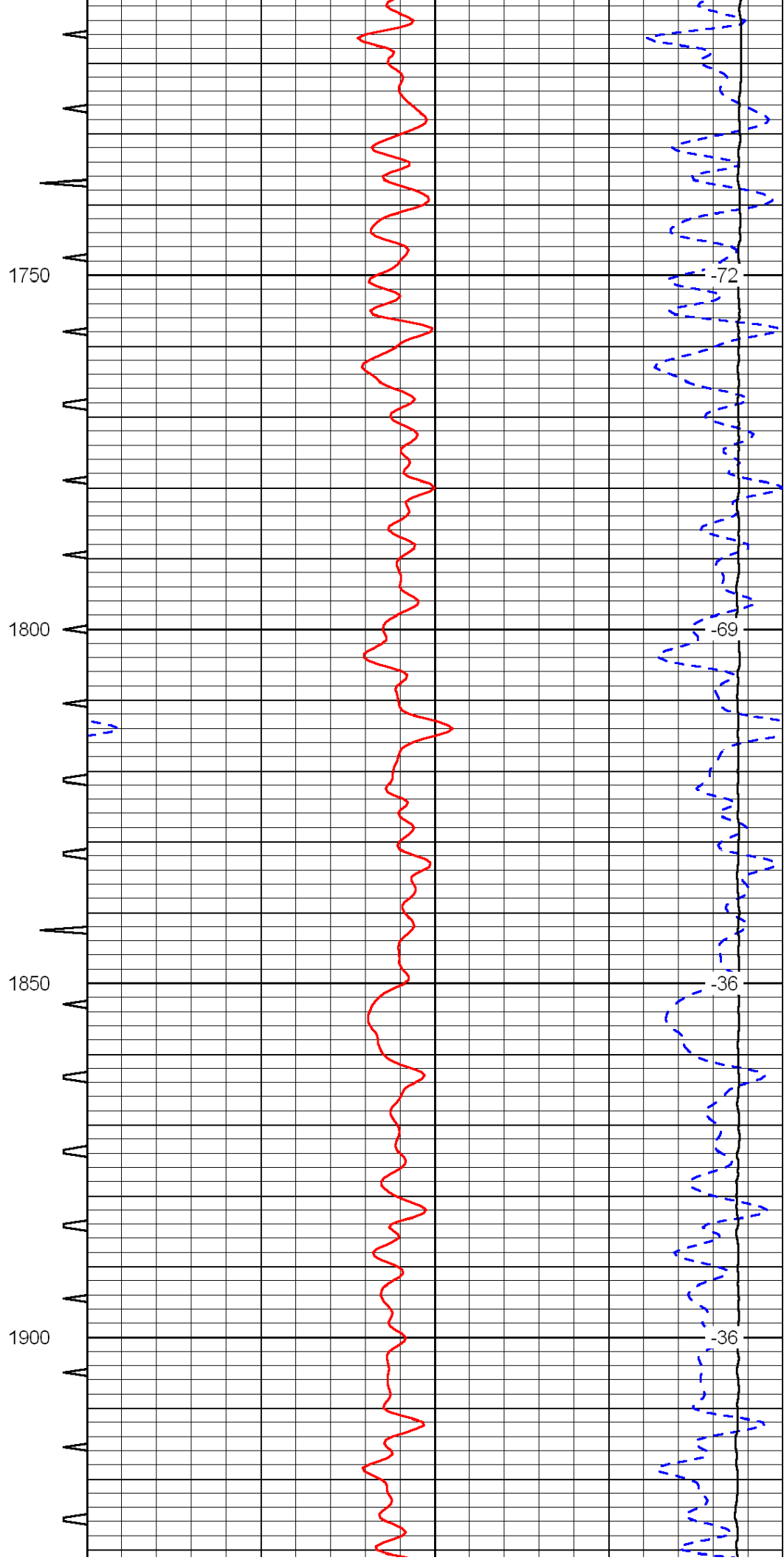
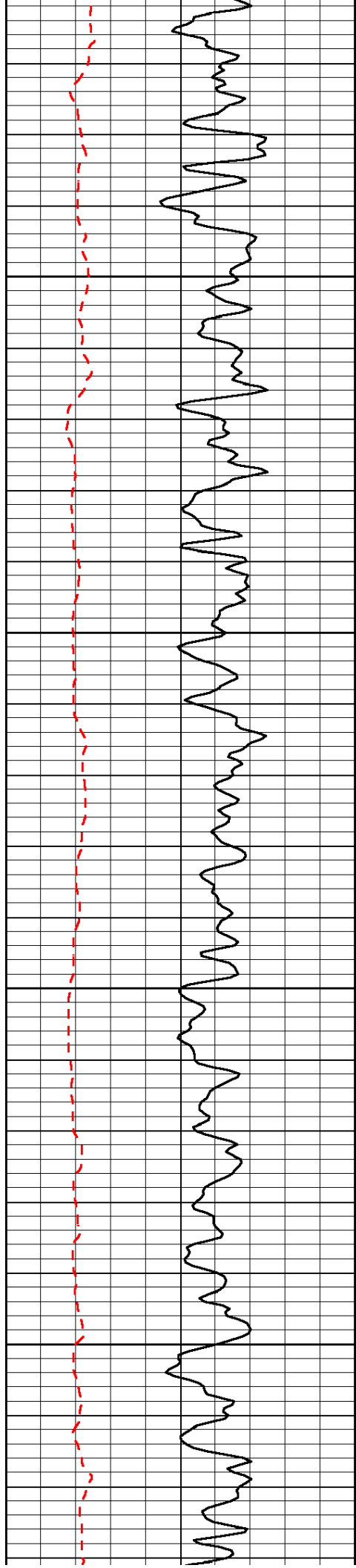


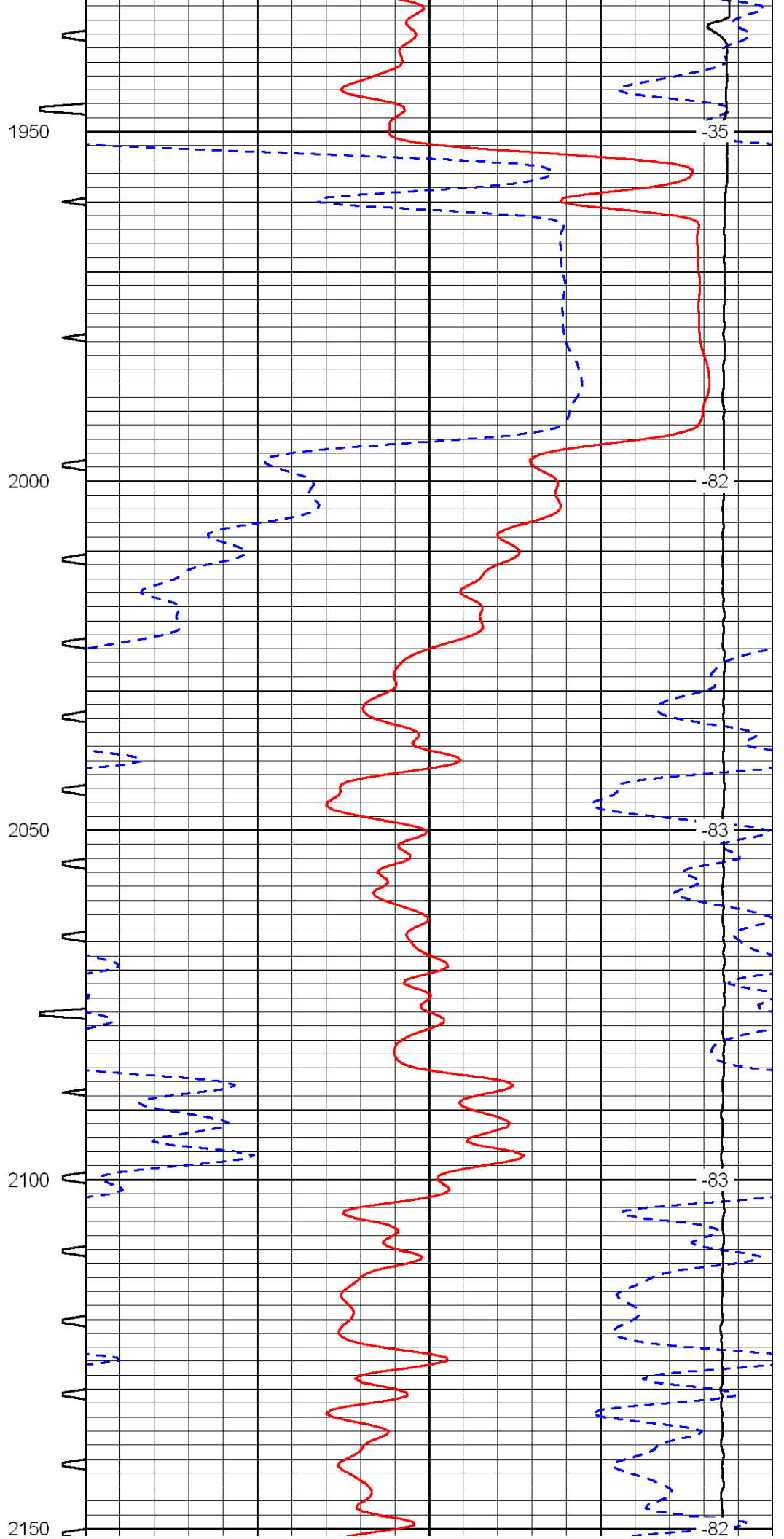
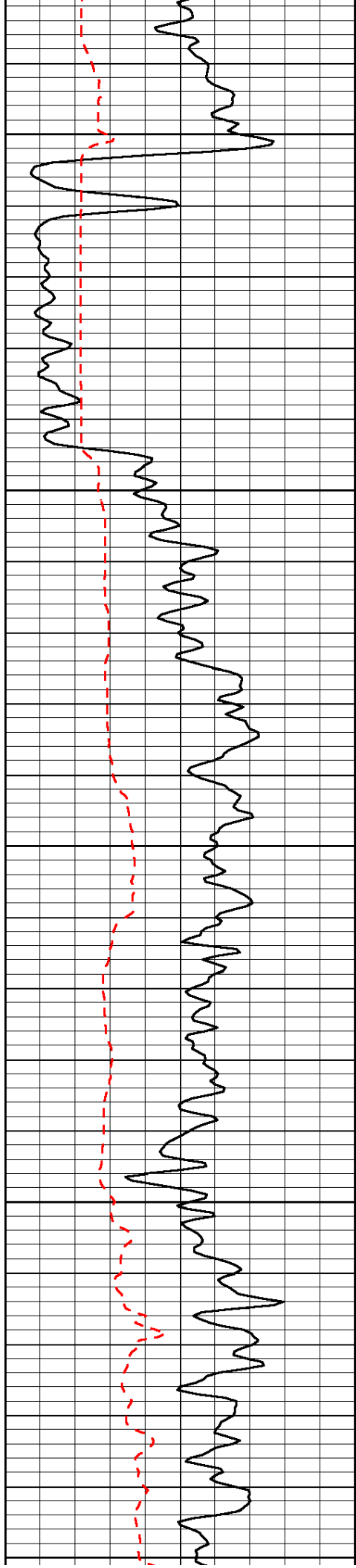


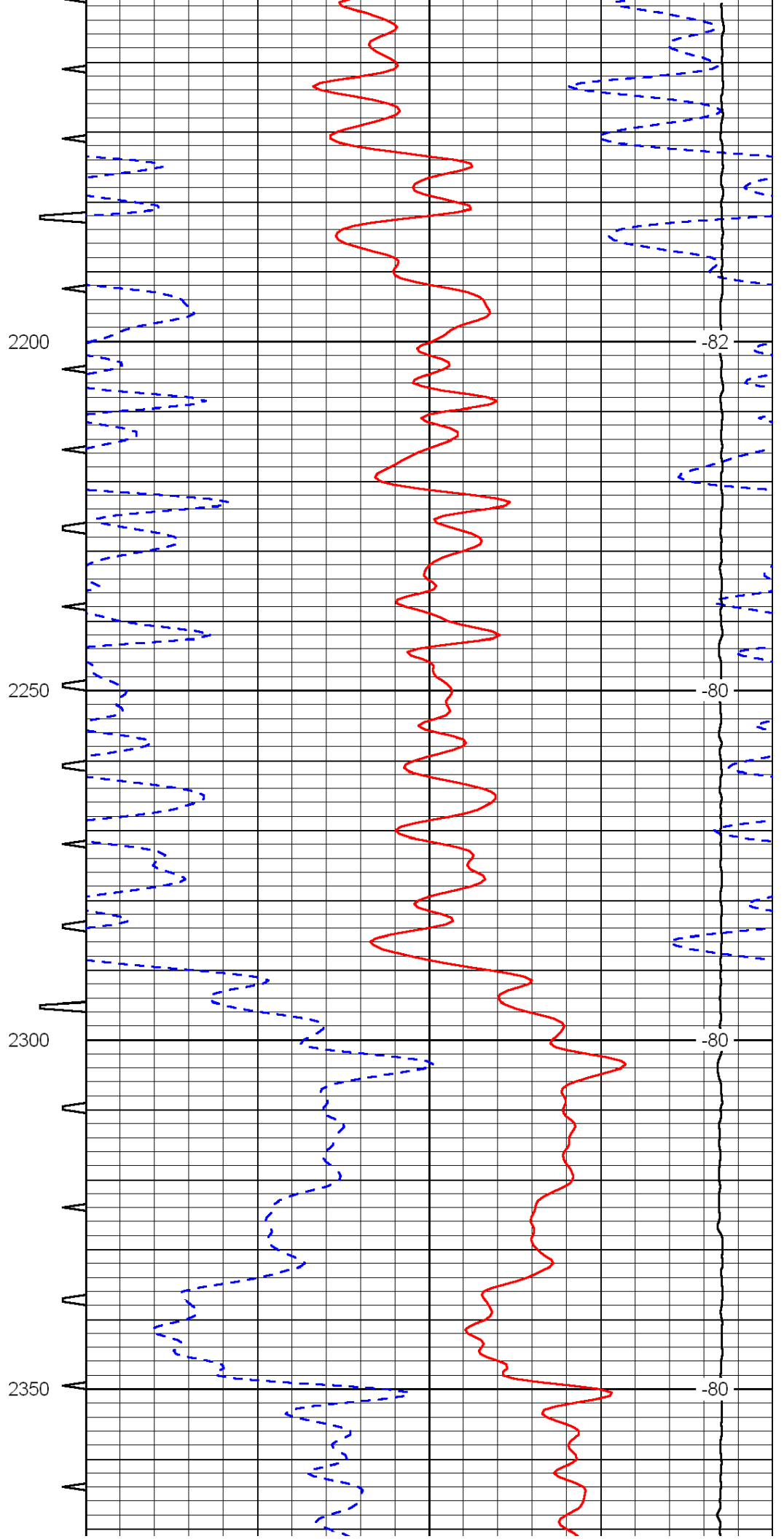
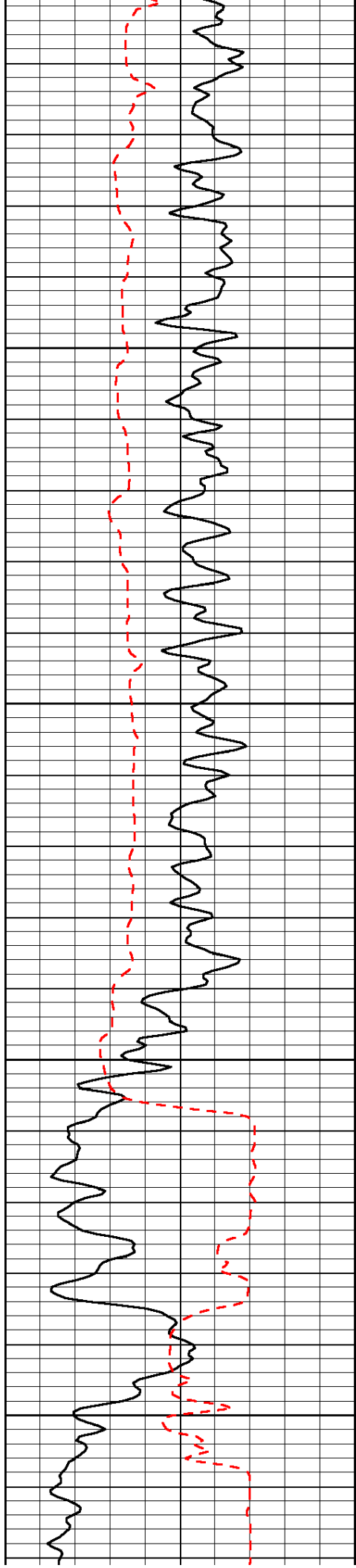












2200

-82

2250

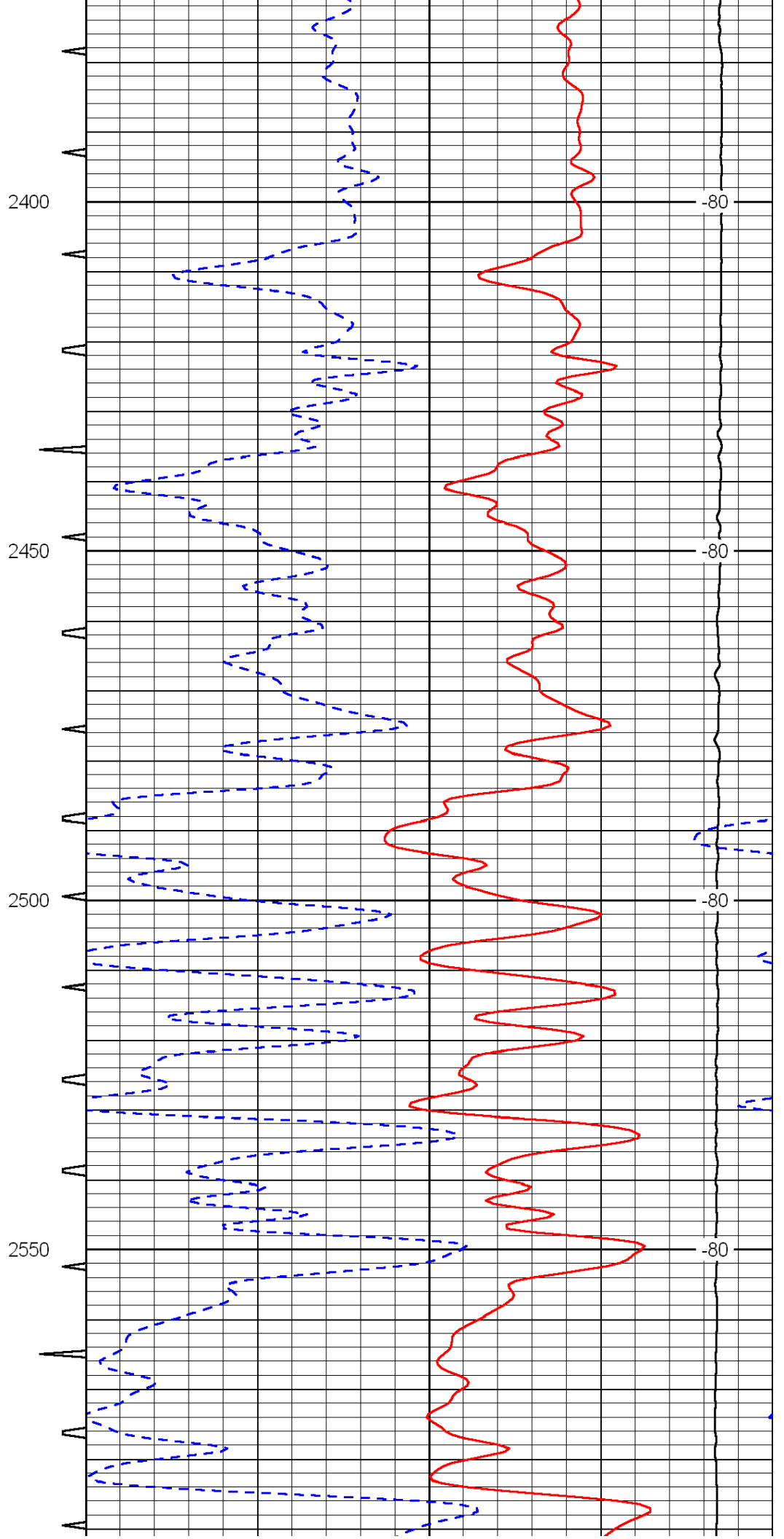
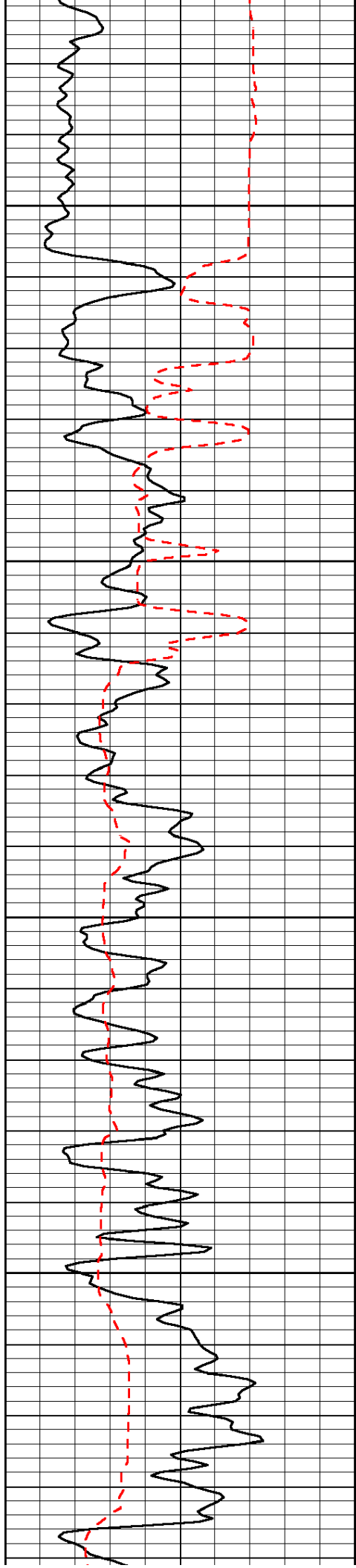
-80

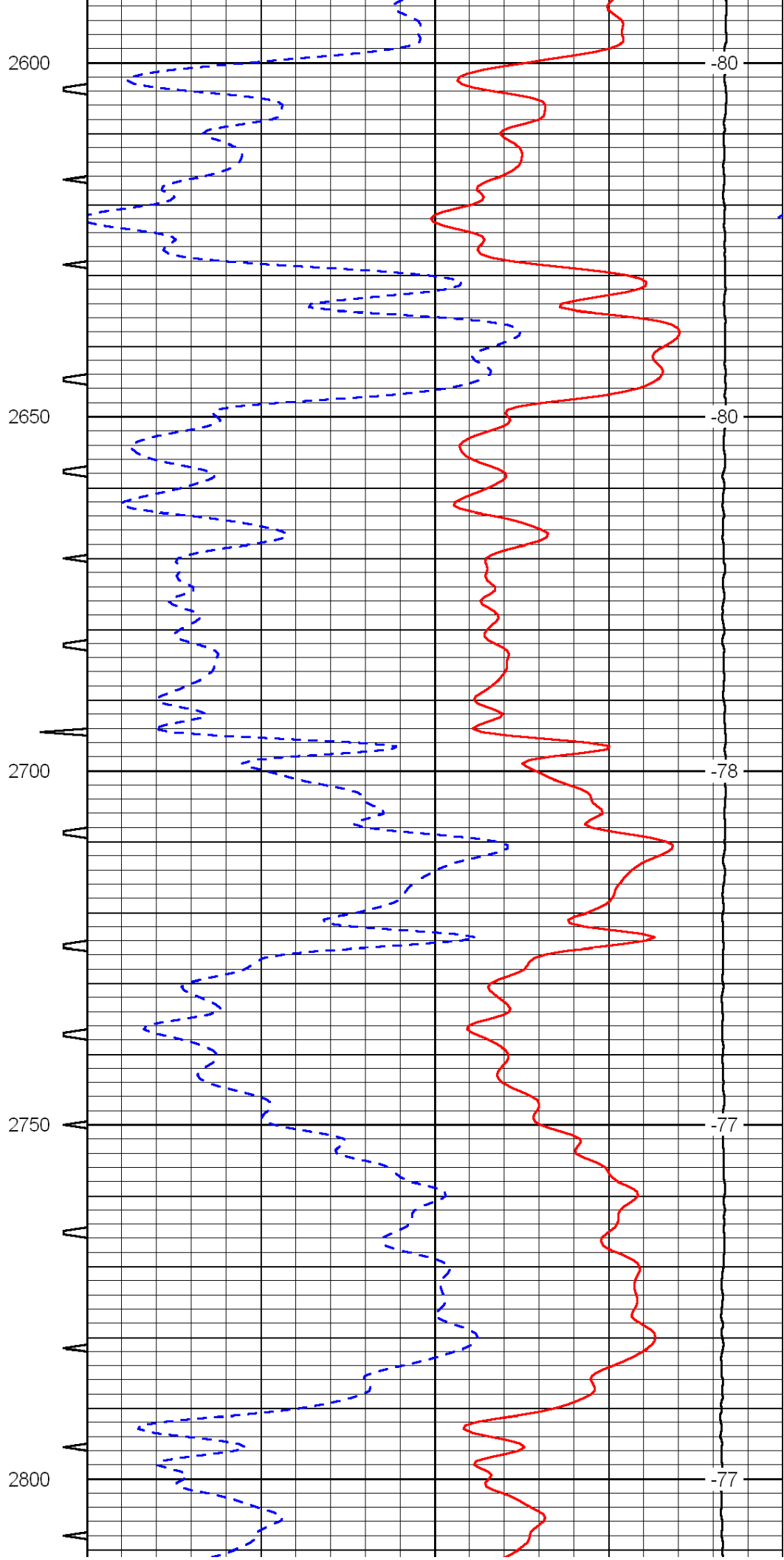
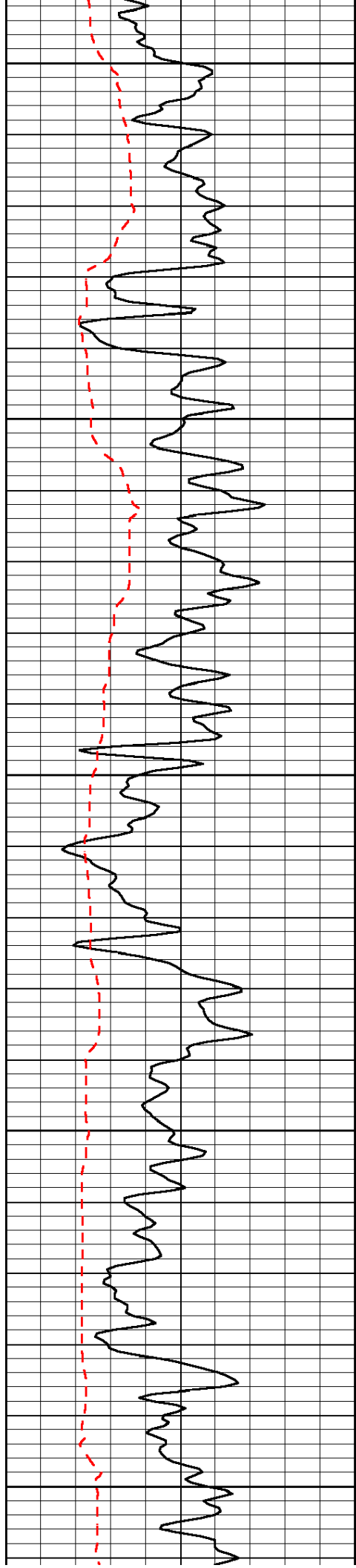
2300

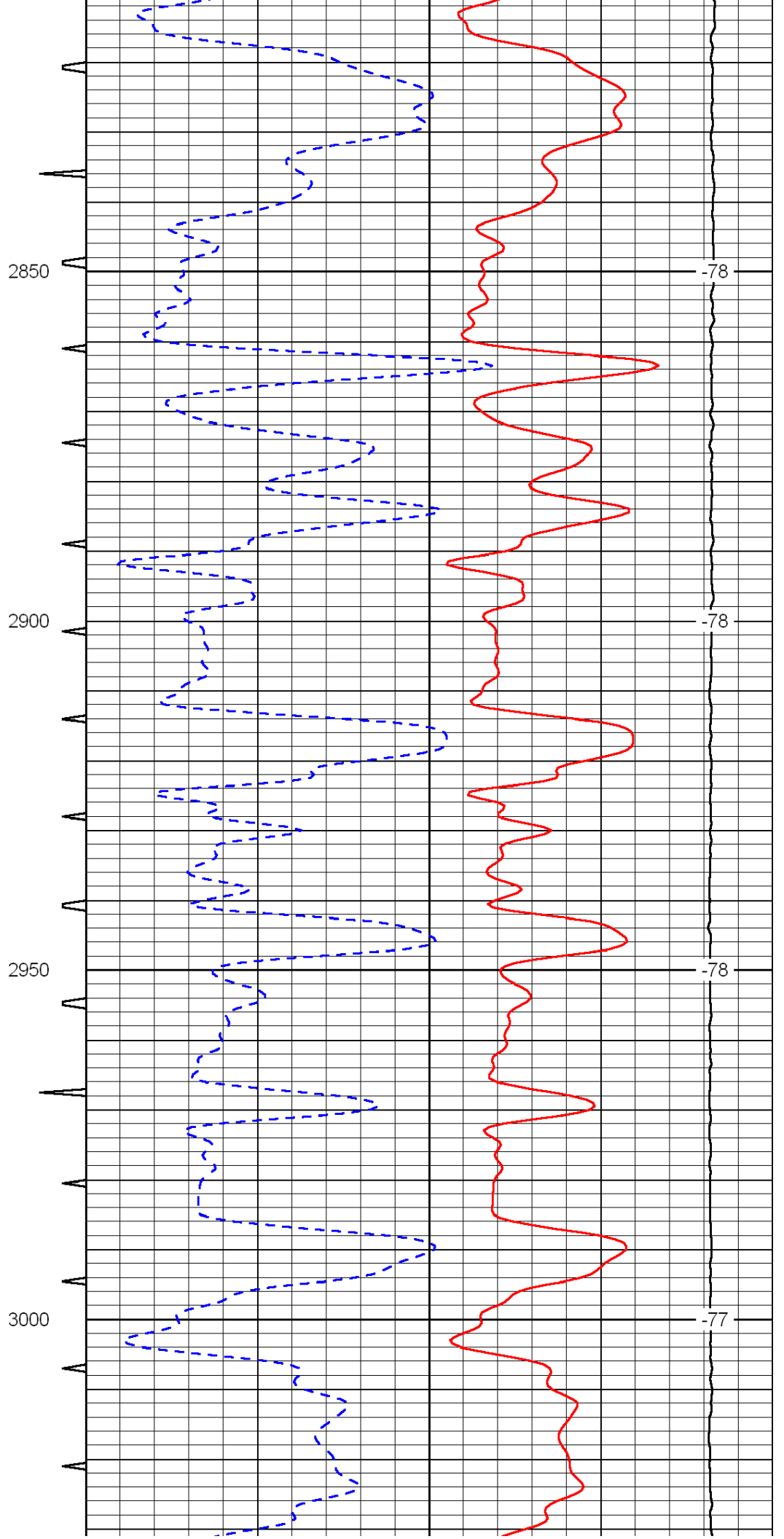
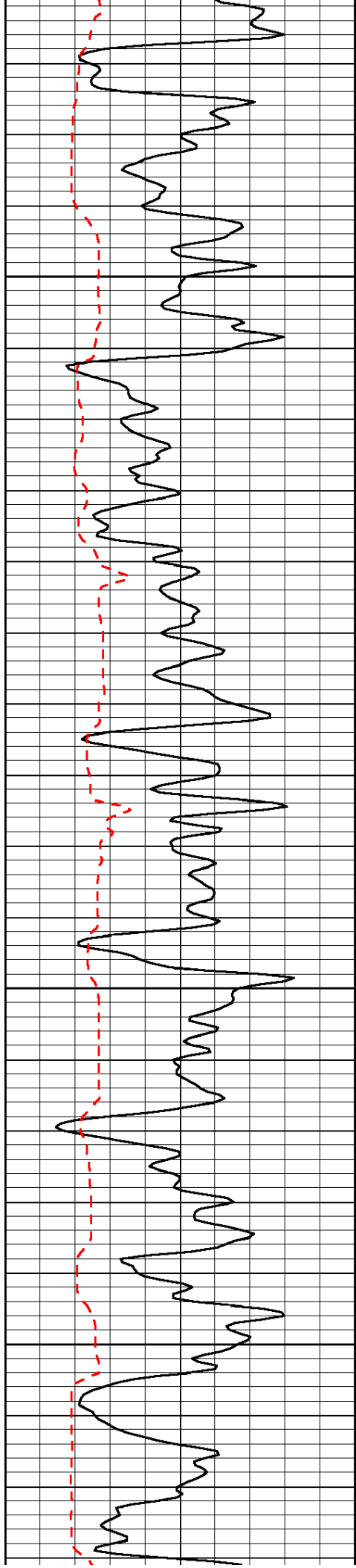
-80

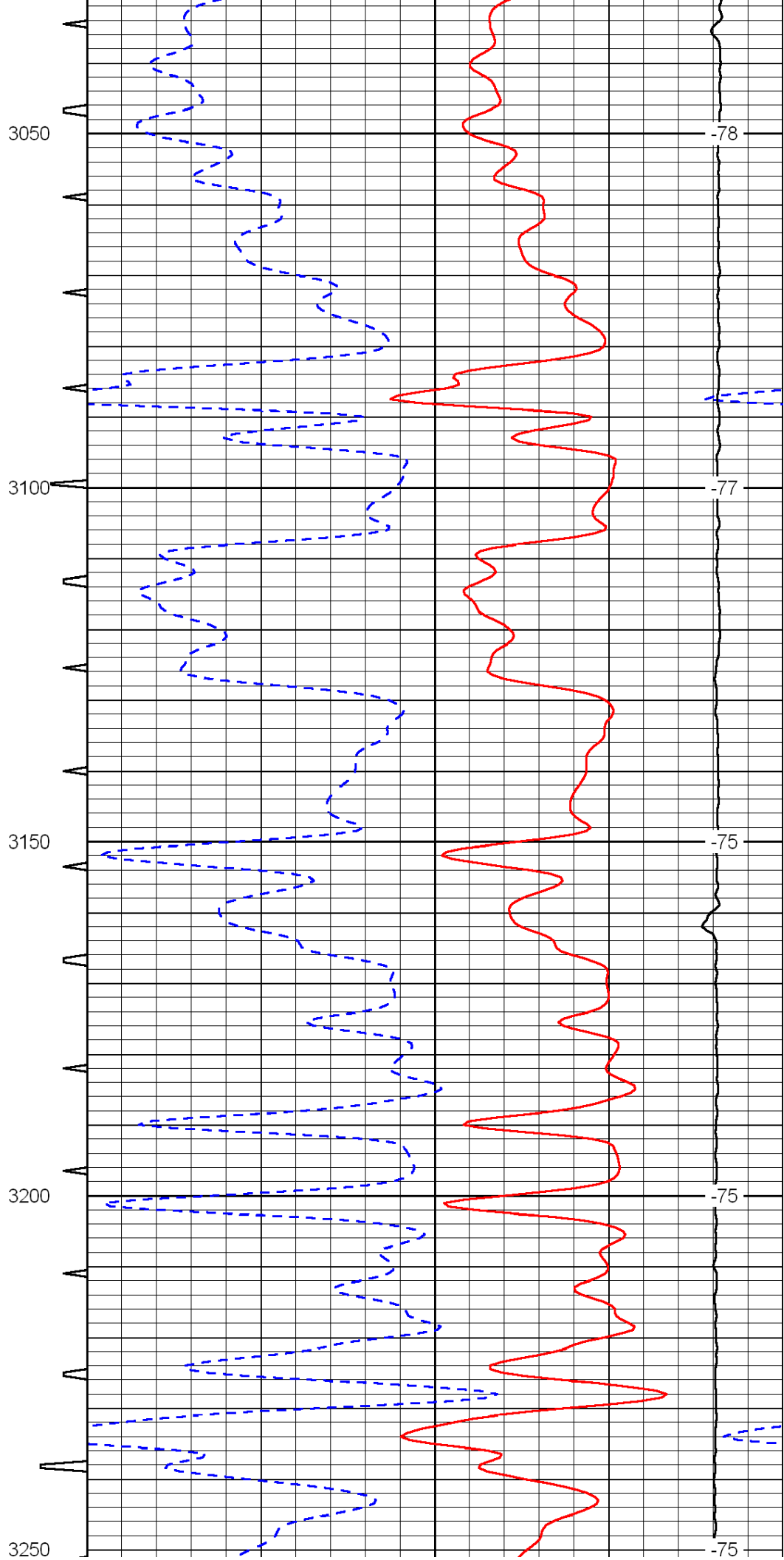
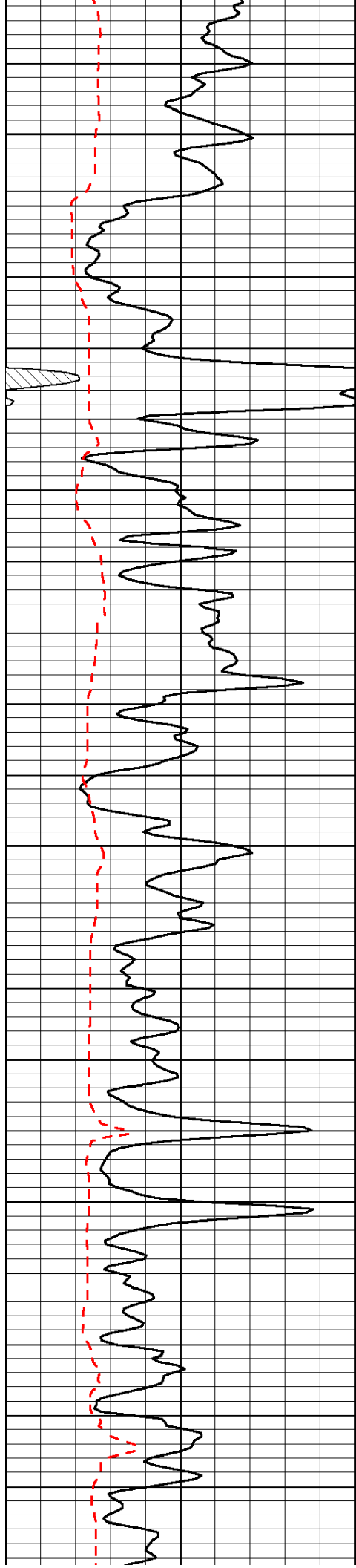
2350

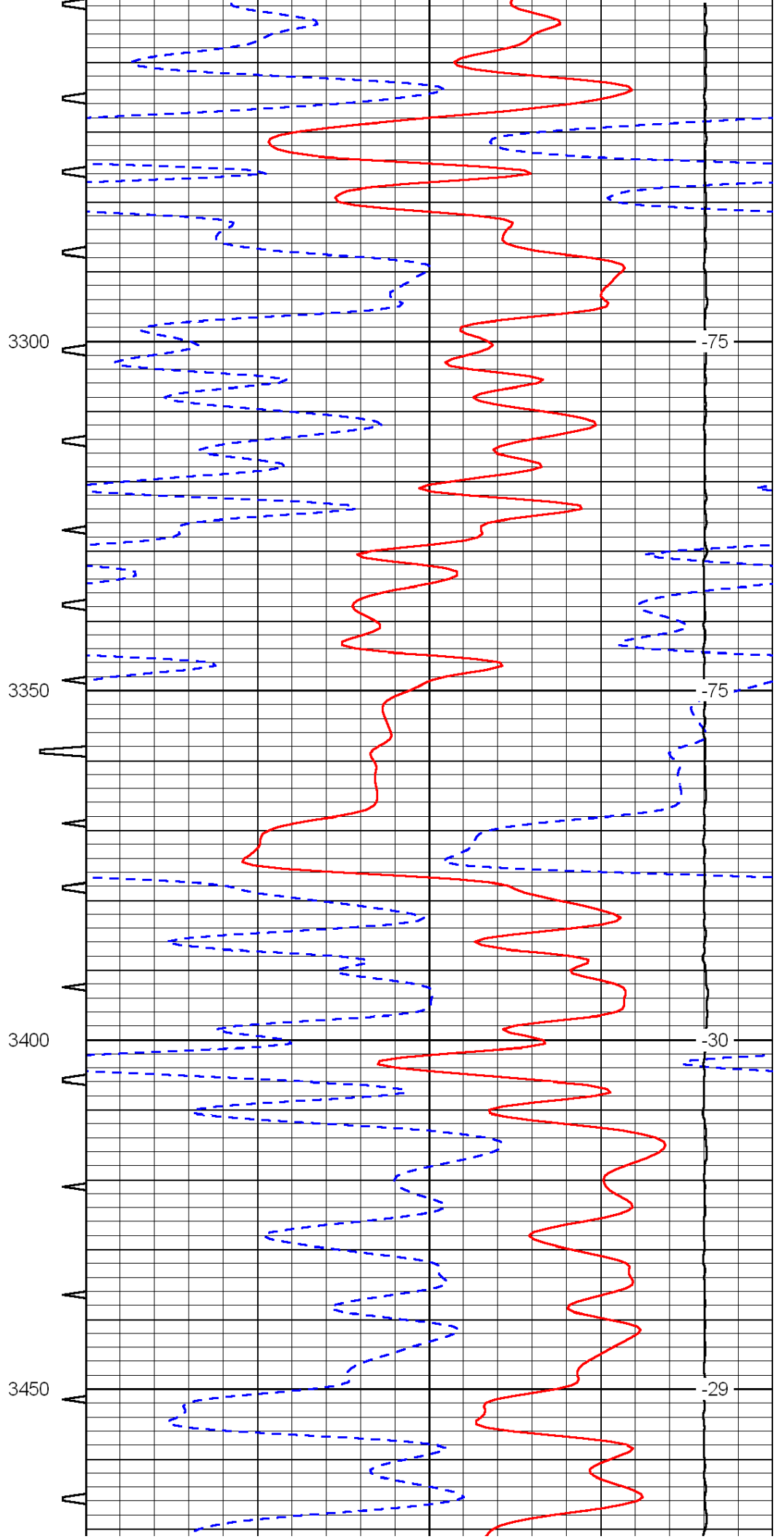
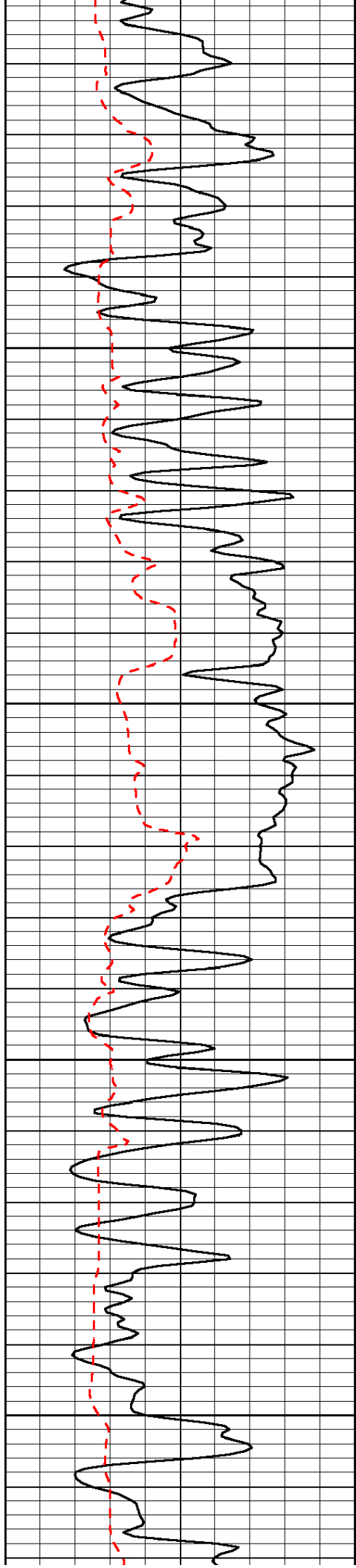
-80

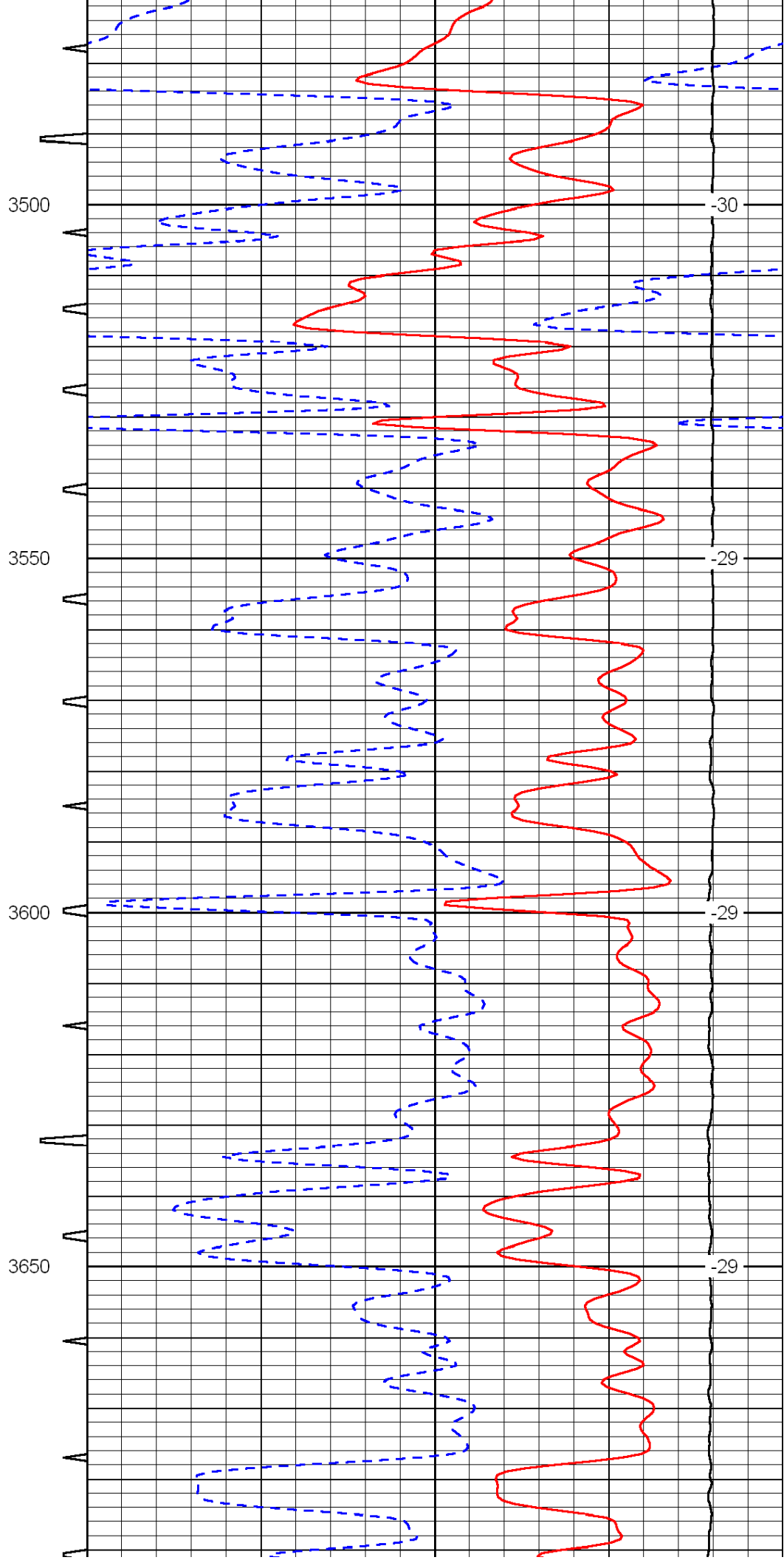
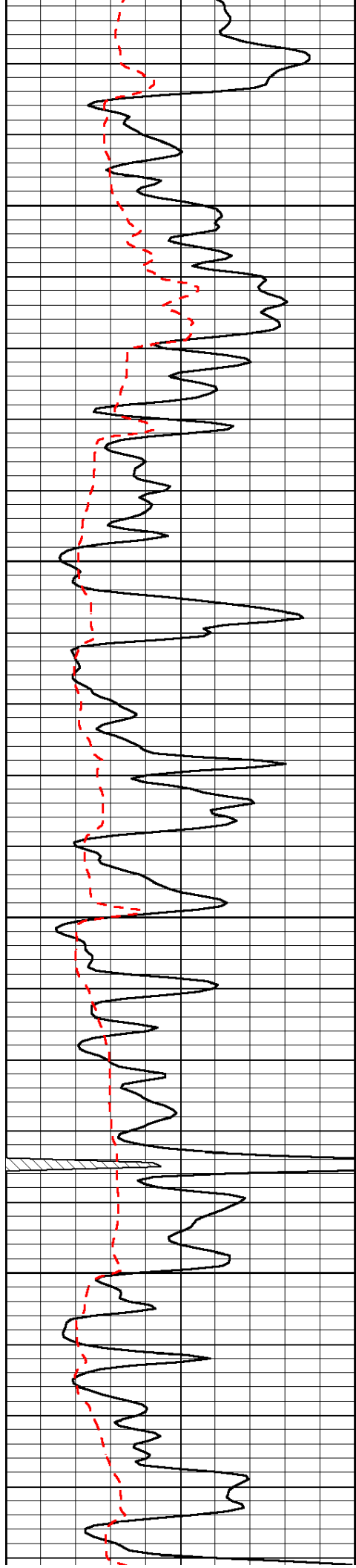


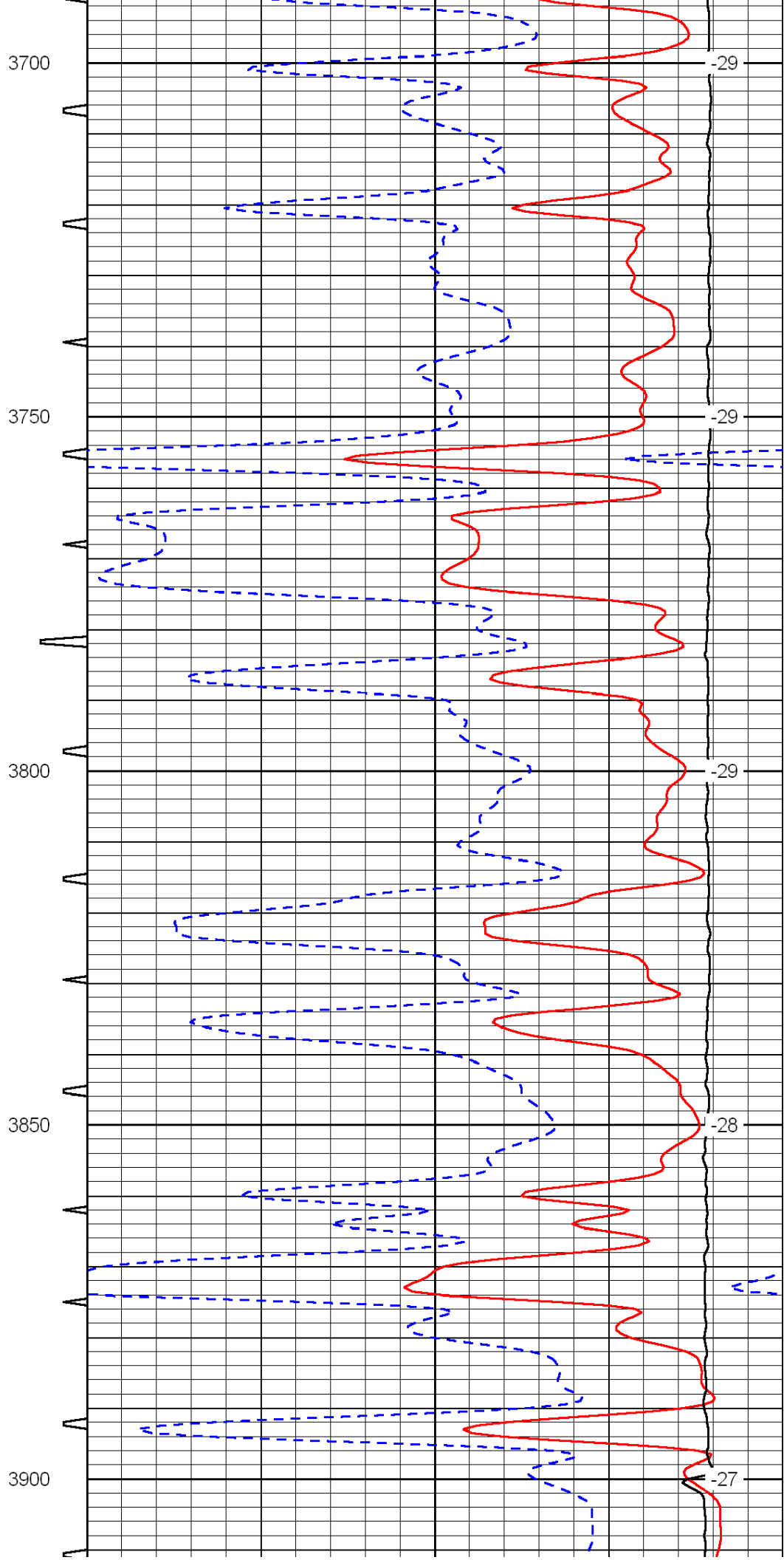
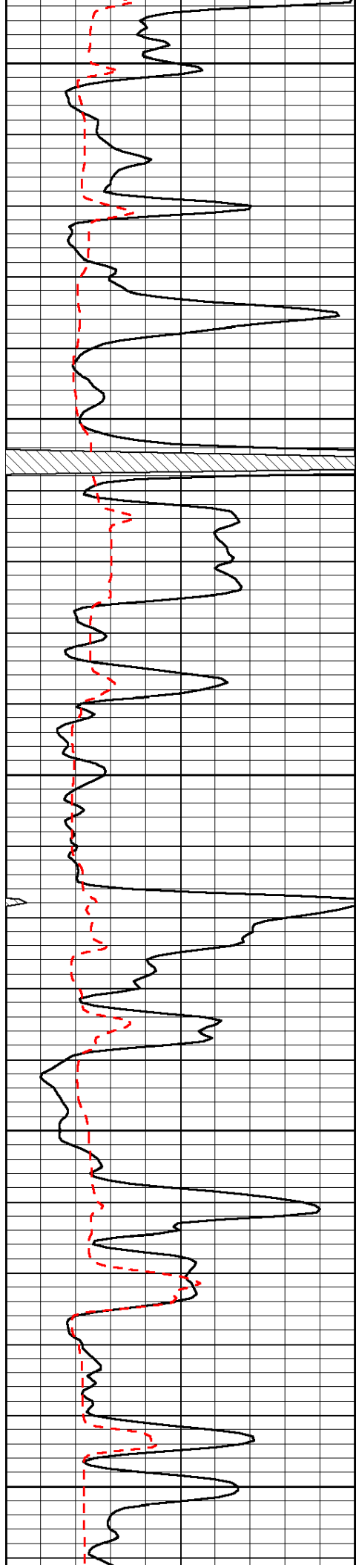


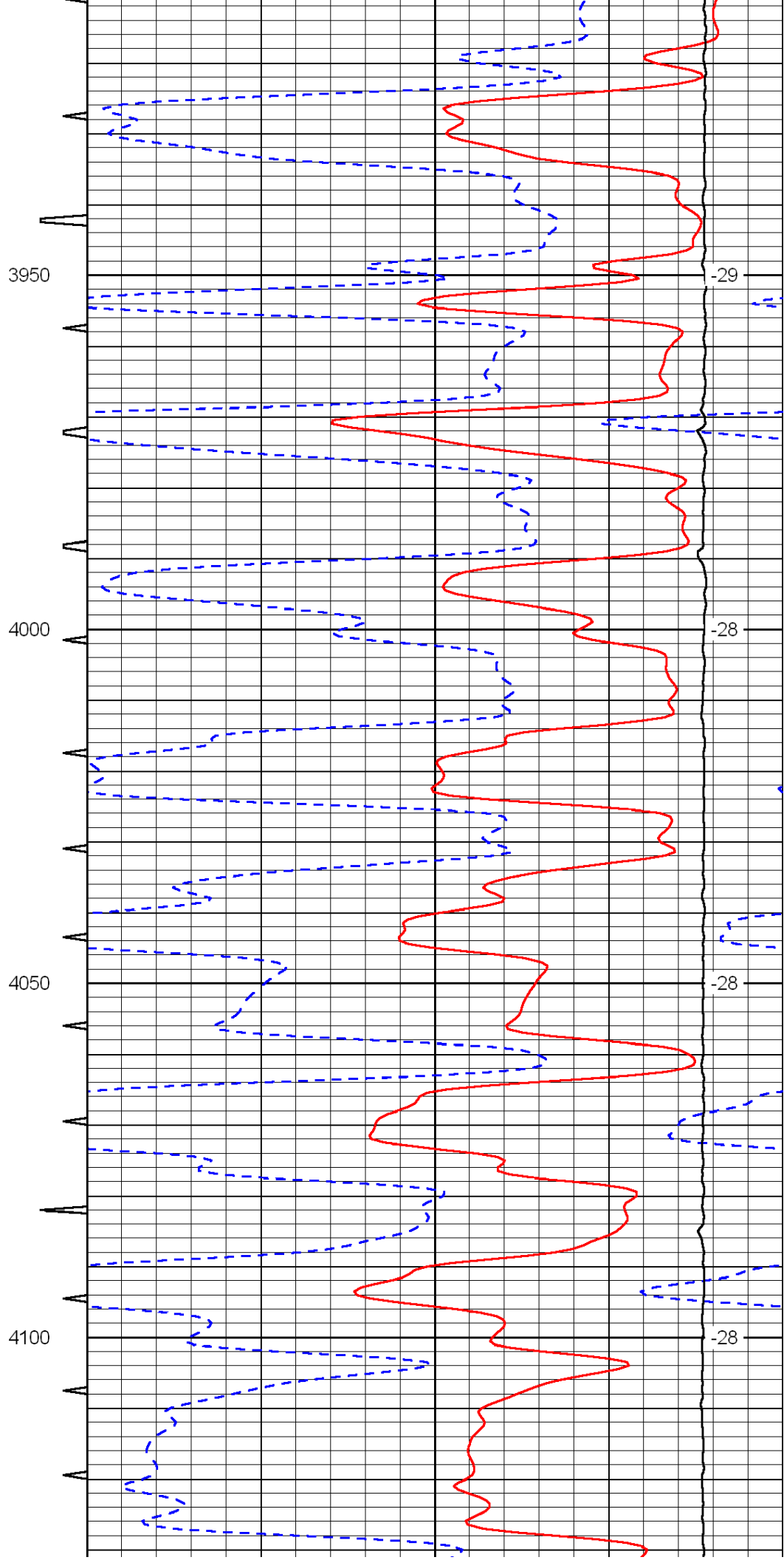
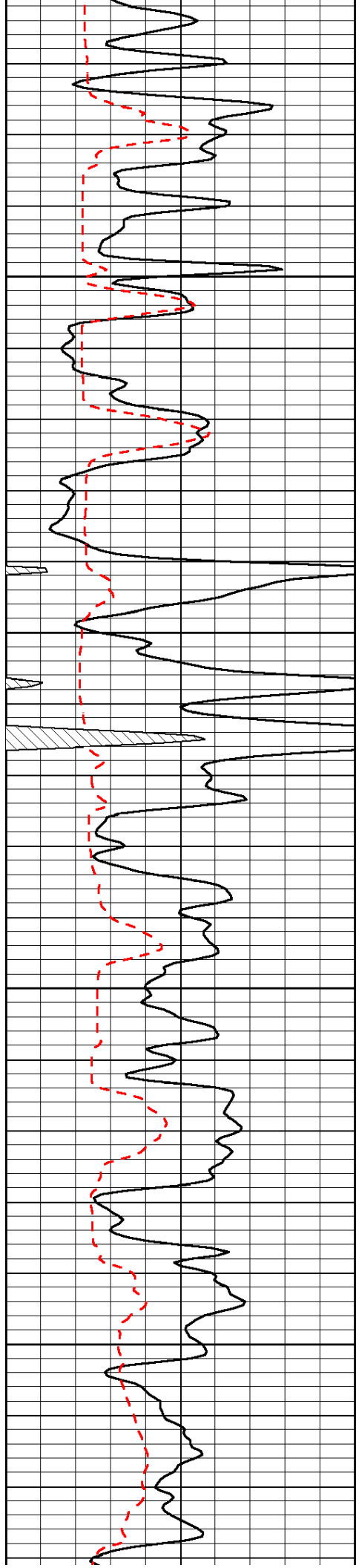


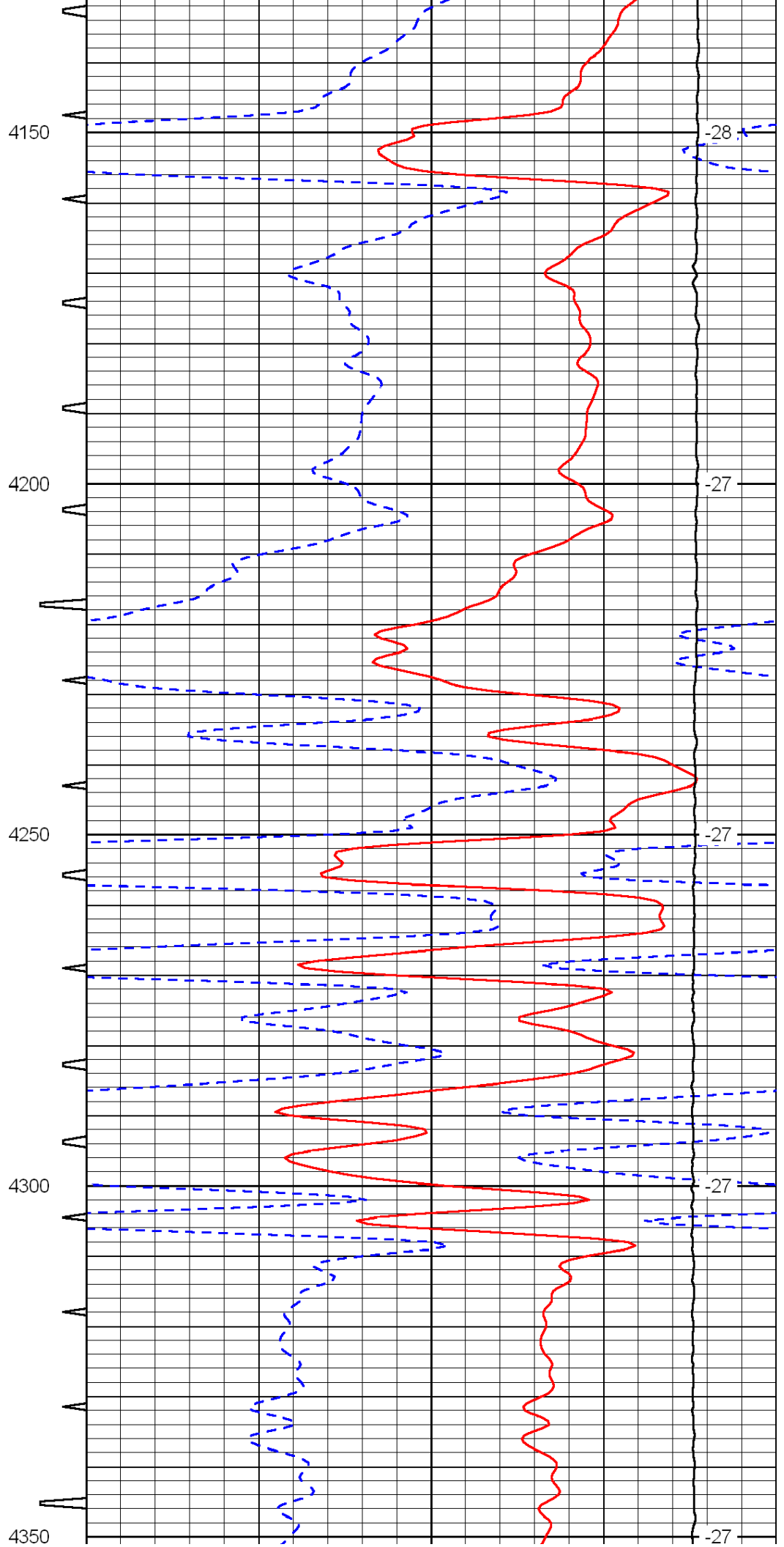
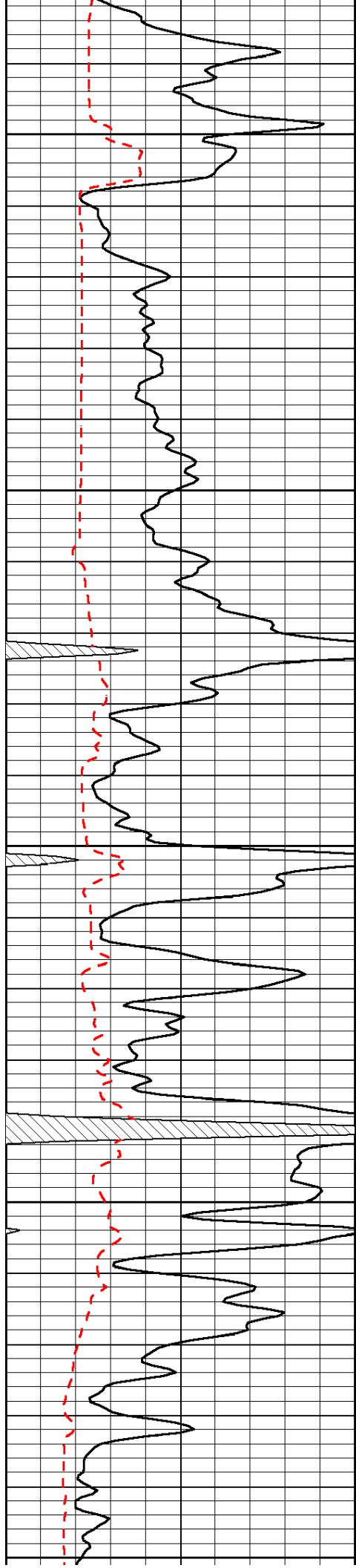


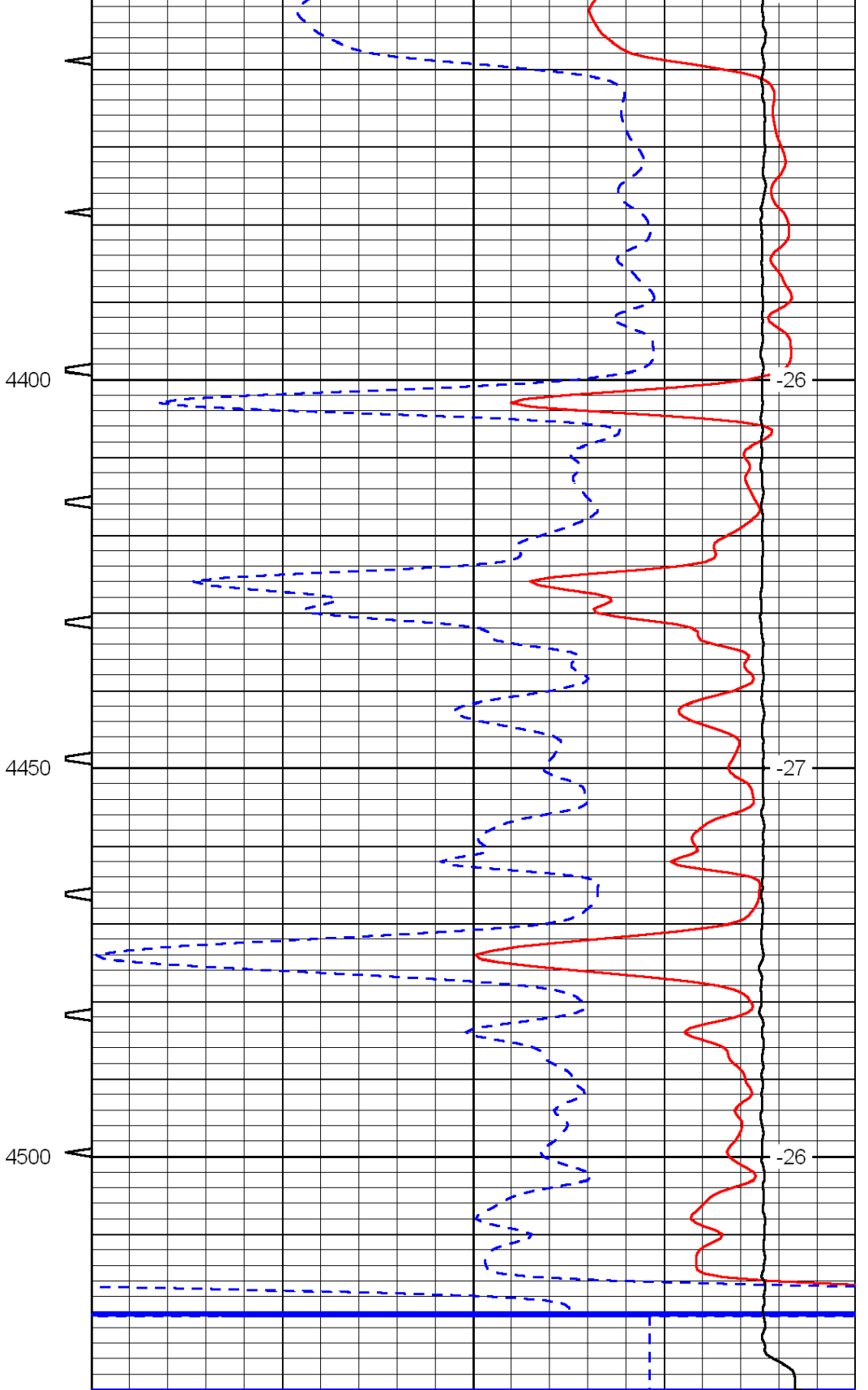
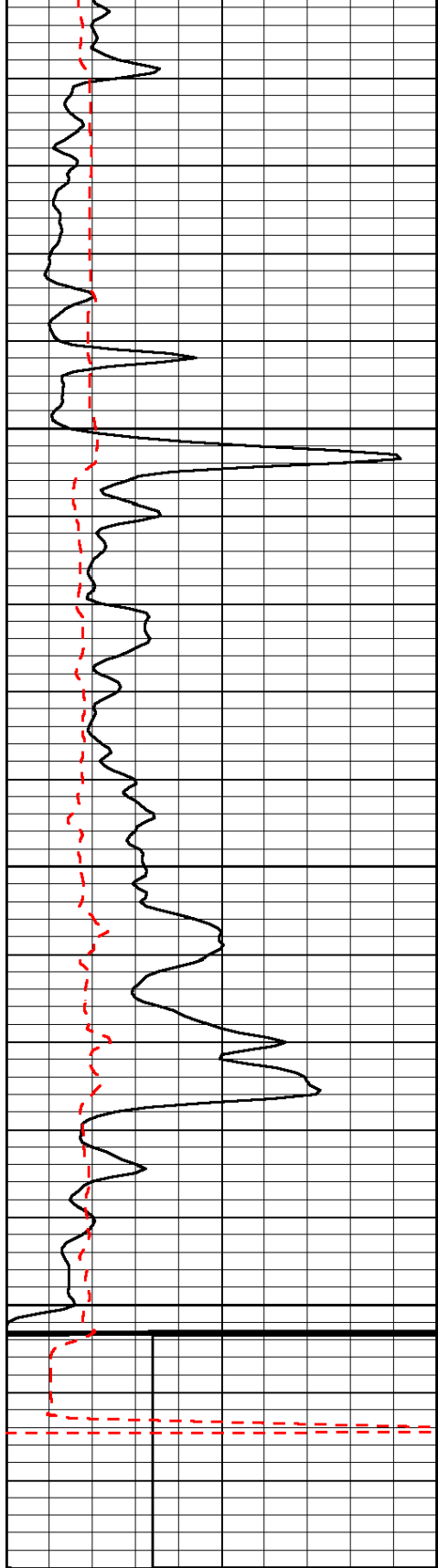












0	Gamma Ray	150	Sonic Int	140	Delta Time (usec/ft)	40
150	Gamma Ray	300	5	0	SPOR	-10
6	Caliper (GAPI)	16		15000	LTEN (lb)	0
LSPD						