



Dual Compensated Porosity Log

DIGITAL LOG (785) 625-3858

API No.	15-195-22,657-00-00		
Company	Murfin Drilling Company, Inc.		
Well	Nimz No. 1-13		
Field	Wildcat		
County	Trego		
Location	1800' FSL & 1180' FWL		
	Sec: 13	Twp: 12 S	Rge: 24 W
Other Services	DIL MEI/BHCS		

Permanent Datum	Ground Level	Elevation 2426
Log Measured From	Kelly Bushing	11 Ft. Above Perm. Datum
Drilling Measured From	Kelly Bushing	
Date	5/08/2010	

Run Number	One
Type Log	CNL / CDL
Depth Driller	4525
Depth Logger	4526
Bottom Logged Interval	4505
Top Logged Interval	3400
Type Fluid In Hole	Chemical
Salinity, PPM CL	5,600
Density	9.3
Level	Full
Max. Rec. Temp. F	123
Operating Rig Time	5 Hours
Equipment -- Location	007 Hays
Recorded By	K. Bange
Witnessed By	Kent Crisler

Borehole Record				Casing Record			
Run No.	Bit	From	To	Size	Wgt.	From	To
1	12.25	00	225	8.625	24#	00	225
2	7.875	225	4525				

<<< Fold Here >>>

All interpretations are opinions based on inferences from electrical or other measurements and we cannot and do not guarantee the accuracy or correctness of any interpretation, and we shall not, except in the case of gross or willful negligence on our part, be liable or responsible for any loss, costs, damages, or expenses incurred or sustained by anyone resulting from any interpretation made by any of our officers, agents or employees. These interpretations are also subject to our general terms and conditions set out in our current Price Schedule.

Comments

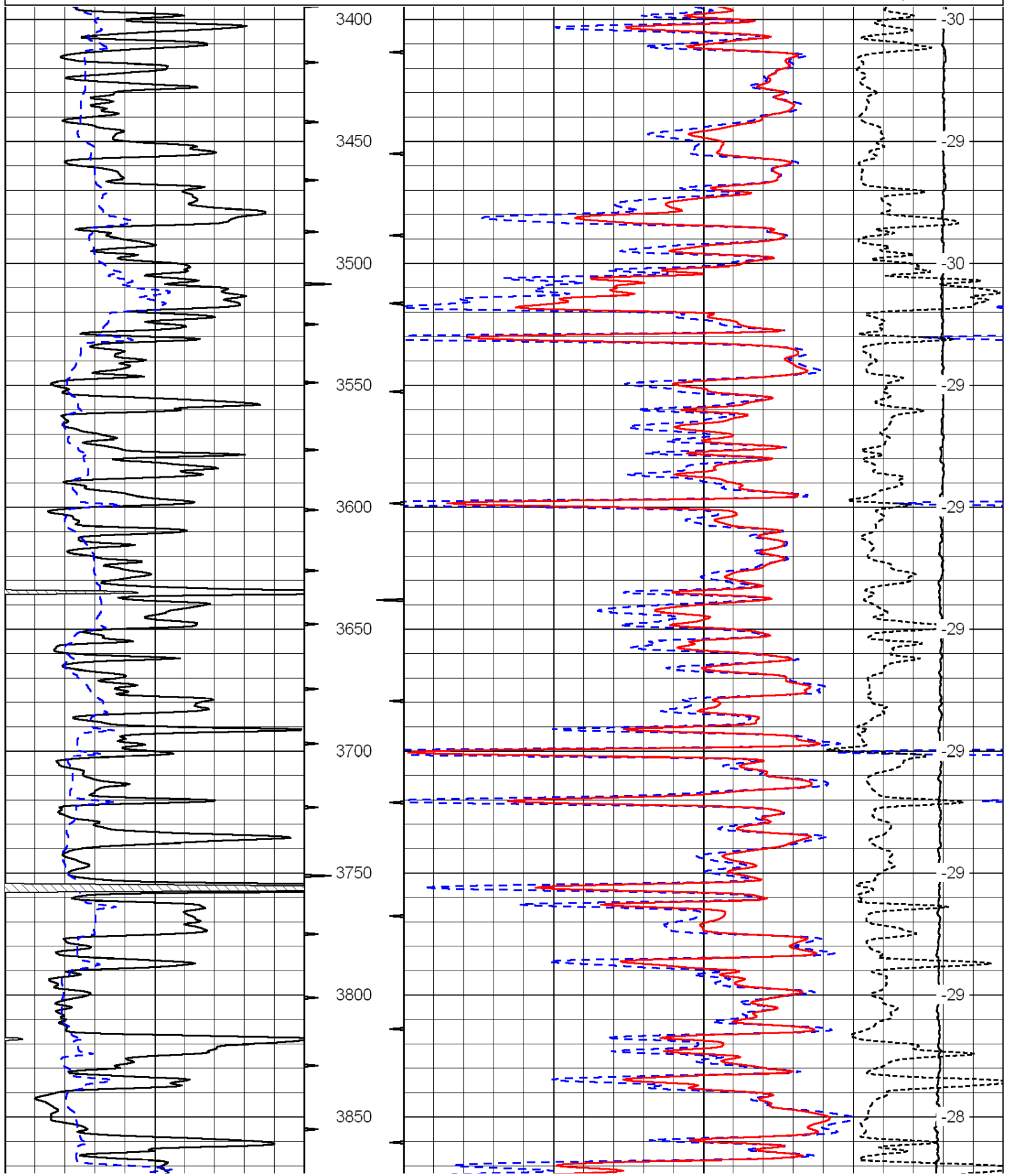
Thank you for using Log-Tech, Inc.
(785) 625-3858

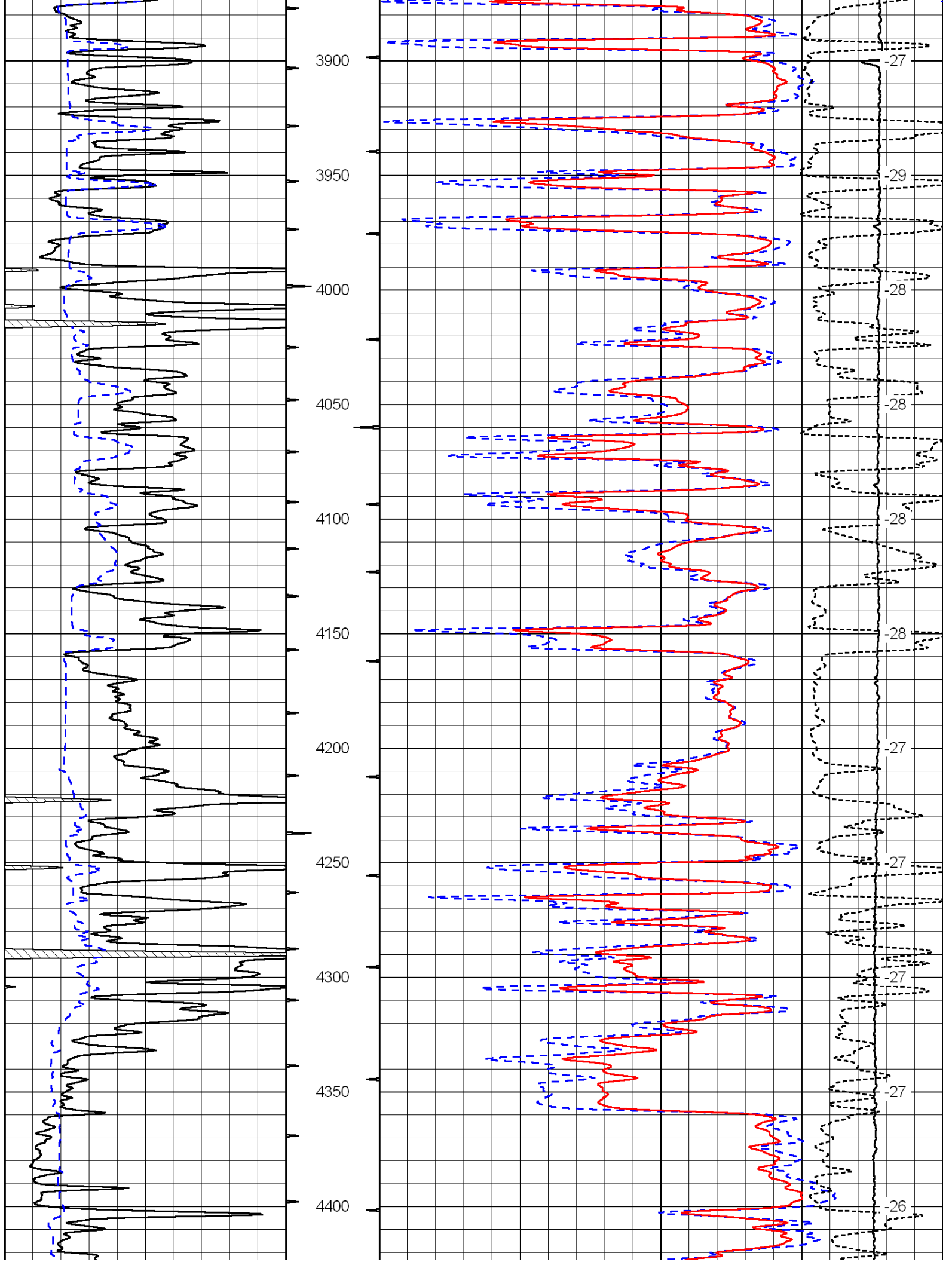
1-70 and exit 127 (Wakeeney) S 100' to I rd, W 2 1/2 to 200 rd, S 1/2, E into

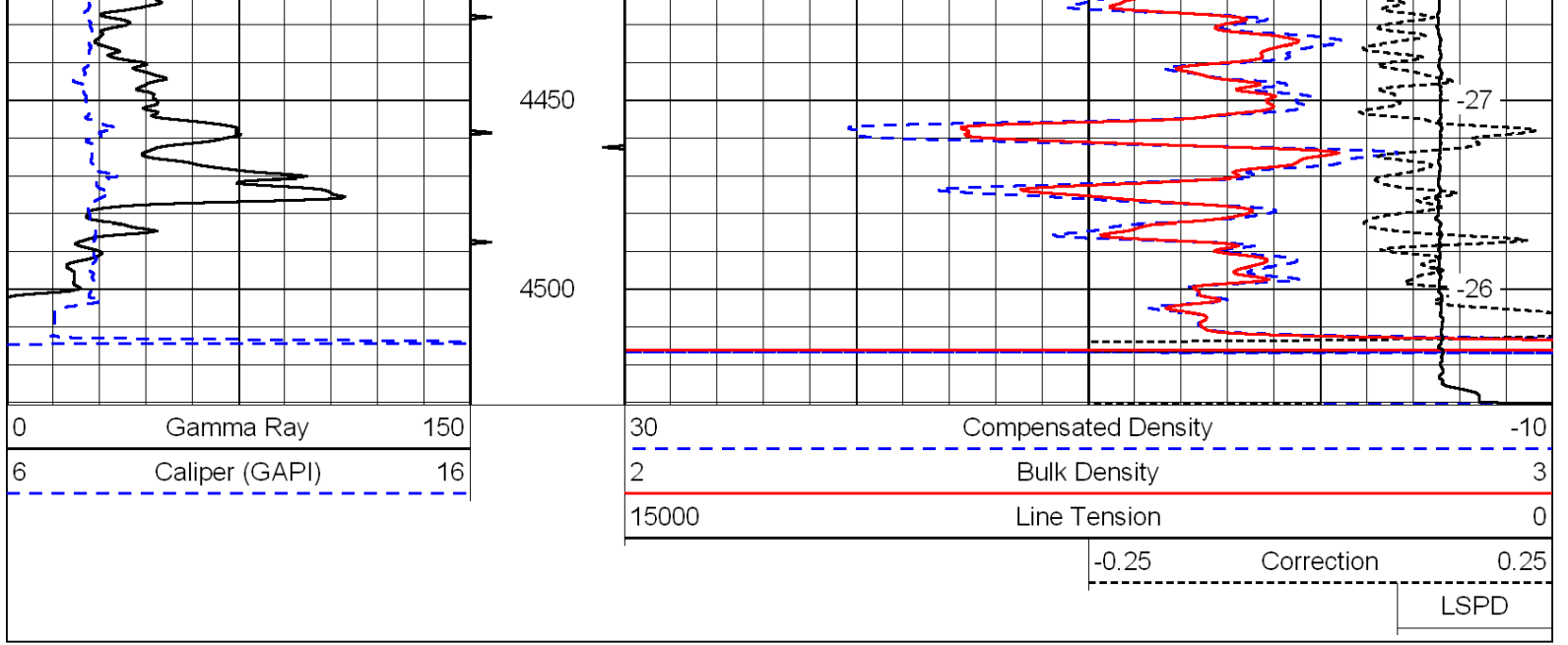
Database File: c:\warrior\data\murfin_nimz no. 1-13\murfnhd.db
 Dataset Pathname: dil/murf2in
 Presentation Format: cdl
 Dataset Creation: Sat May 08 04:48:31 2010
 Charted by: Depth in Feet scaled 1:600

0	Gamma Ray	150
6	Caliper (GAPI)	16

30	Compensated Density	-10
2	Bulk Density	3
15000	Line Tension	0
-0.25	Correction	0.25
LSPD		







Database File: c:\warrior\data\murfin_nimz no. 1-13\murfnhd.db
 Dataset Pathname: dil/murf2in
 Presentation Format: cndlspec
 Dataset Creation: Sat May 08 04:48:31 2010
 Charted by: Depth in Feet scaled 1:240

