



DIGITAL LOG (785) 625-3858

Microresistivity Log

API No.	15-109-20,891-00-00		
Company	Russell Oil, Inc.		
Well	Tucker "A" No 1-29		
Field	Wildcat		
County	Logan	State	Kansas
Location	1420' FSL & 1540' FWL		
Sec:	29	Twp:	15S Rge: 34W
Permanent Datum	Ground Level	Elevation	3049
Log Measured From	Kelly Bushing	8 Ft. Above Perm. Datum	
Drilling Measured From	Kelly Bushing		
		Other Services	CNL/CDL DIL/BHCS
		Elevation	K.B. 3057 D.F. 3049 G.L. 3049

Date	05/03/2010	
Run Number	Two	
Depth Driller	4900	
Depth Logger	4908	
Bottom Logged Interval	4907	
Top Log Interval	3500	
Casing Driller	8.625 @ 266	
Casing Logger	265	
Bit Size	7.875	
Type Fluid in Hole	Chemical	
Salinity, ppm CL	7.700	
Density / Viscosity	9.1	53
pH / Fluid Loss	10.0	8.8
Source of Sample	Flowline	
Rm @ Meas. Temp	.85	@ 68
Rmf @ Meas. Temp	.64	@ 68
Rmc @ Meas. Temp	1.15	@ 68
Source of Rmf / Rmc	Charts	
Rm @ BHT	.46	@ 127
Operating Rig Time	5 Hours	
Max Rec. Temp. F	127	
Equipment Number	17	
Location	Hays	
Recorded By	Mike Garrison	
Witnessed By	Steven D Angle	

<<< Fold Here >>>

All interpretations are opinions based on inferences from electrical or other measurements and we cannot and do not guarantee the accuracy or correctness of any interpretation, and we shall not, except in the case of gross or willful negligence on our part, be liable or responsible for any loss, costs, damages, or expenses incurred or sustained by anyone resulting from any interpretation made by any of our officers, agents or employees. These interpretations are also subject to our general terms and conditions set out in our current Price Schedule.

Comments

Thank you for using Log-Tech, Inc.
(785) 625-3858

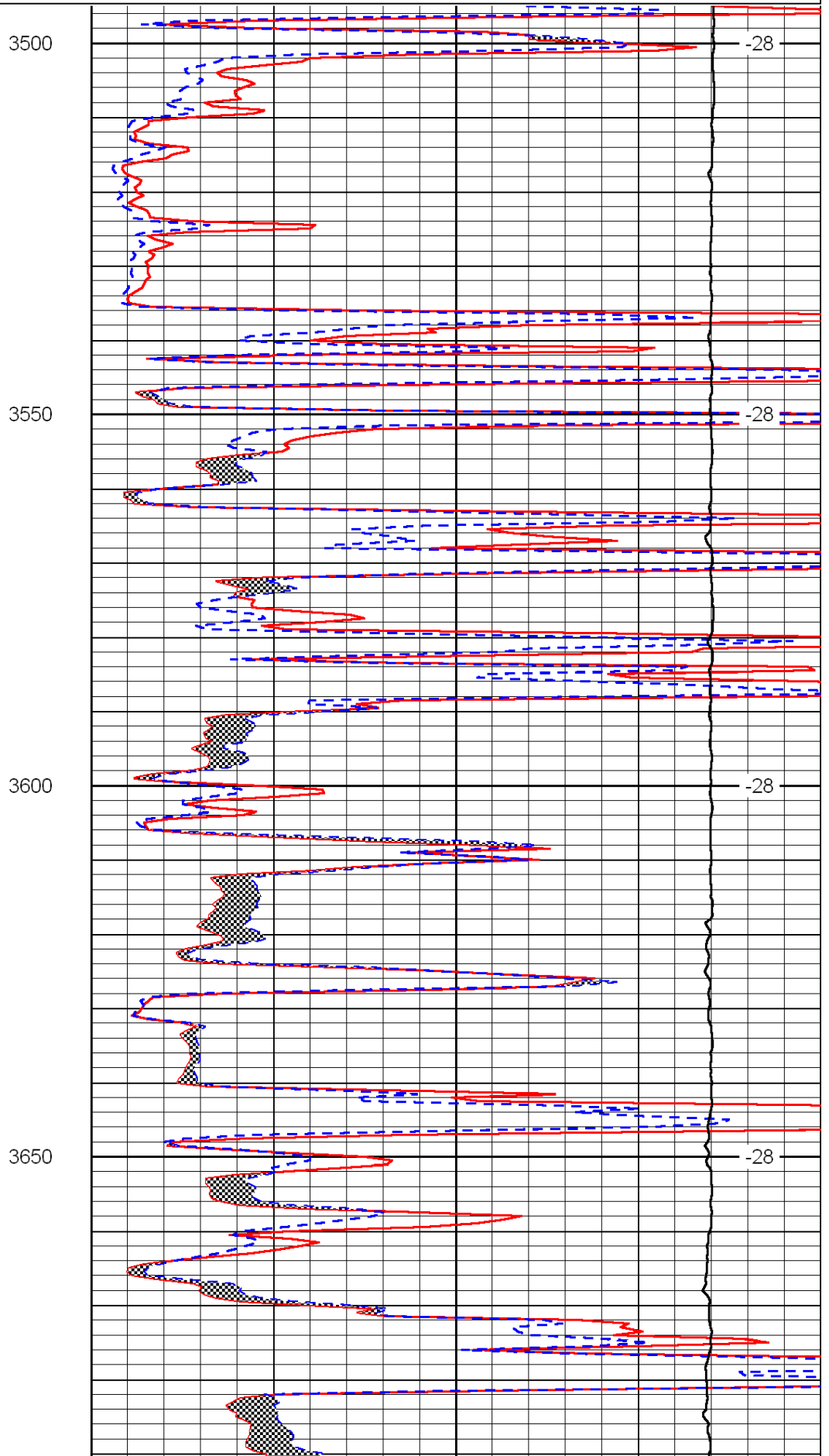
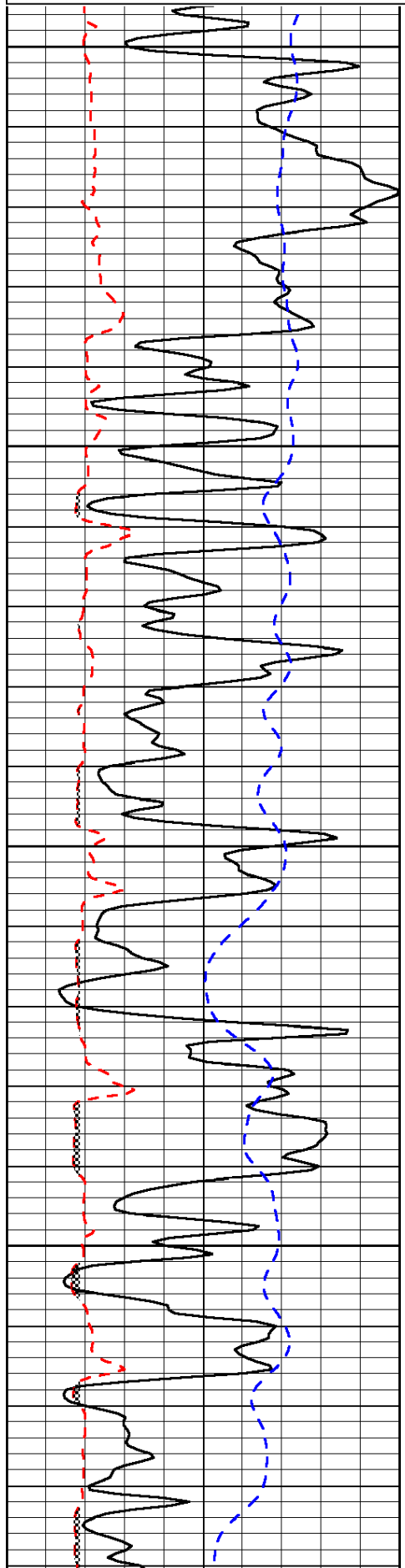
West of Pence to 25 Rd, North past Bison Rd (1/4) East Into

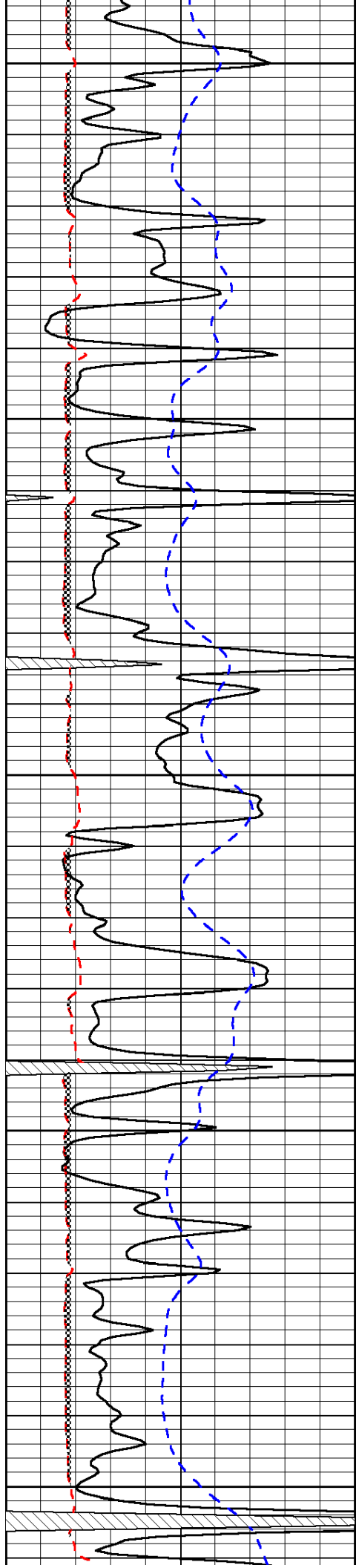
Database File: c:\warrior\data\russell_tucker a no 1-29\russell.db
 Dataset Pathname: dil/russtck
 Presentation Format: micro
 Dataset Creation: Mon May 03 05:08:17 2010
 Charted by: Depth in Feet scaled 1:240

0	Gamma Ray	150
6	Micro Log Caliper (GAPI)	16
-200	SP (mV)	0

0	Micro Inverse 1 X 1	40
0	Micro Normal 2"	40
15000	Line Weight	0

LSPD





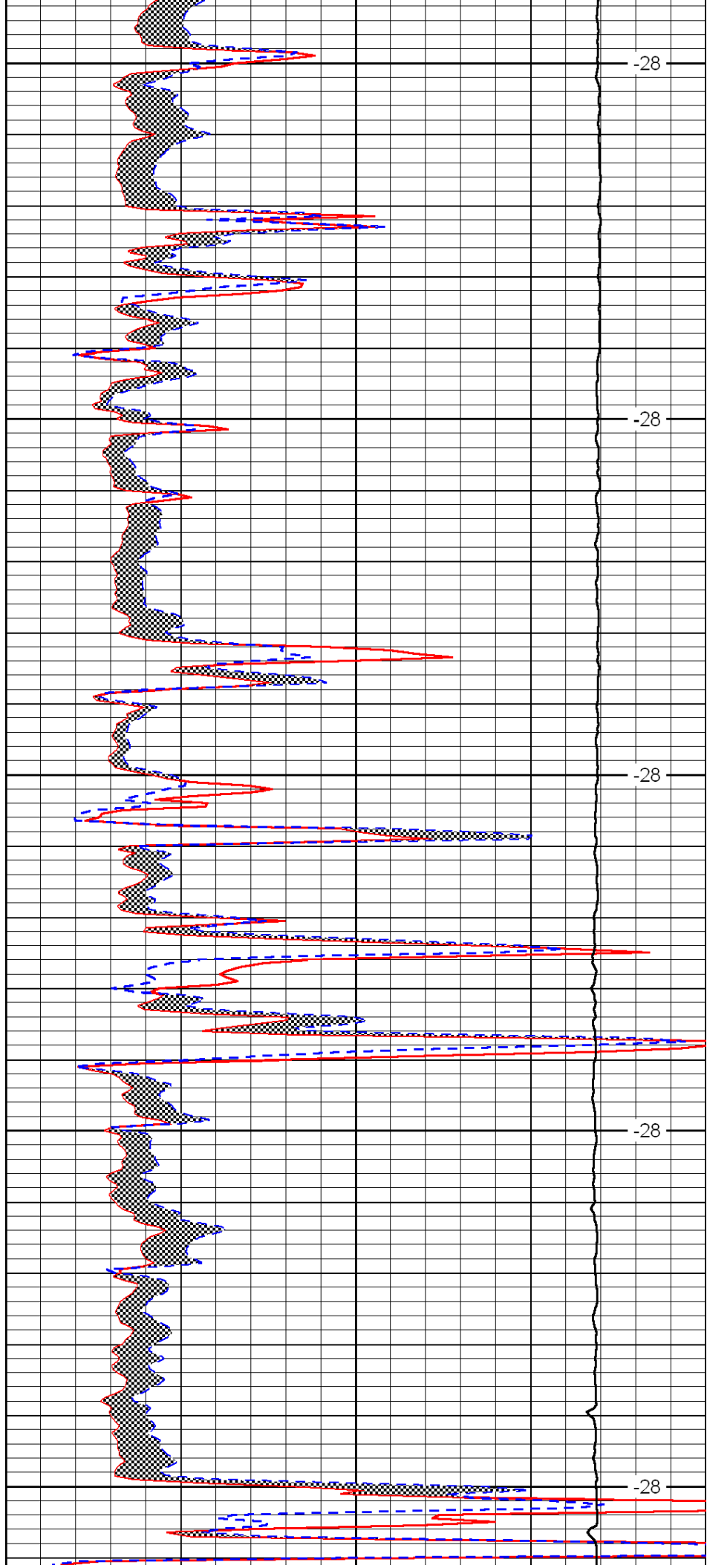
3700

3750

3800

3850

3900



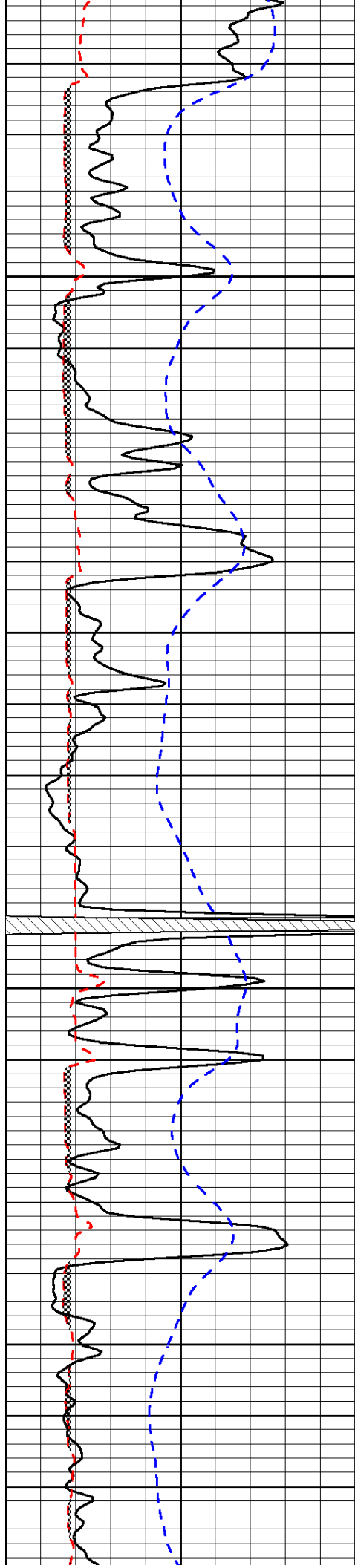
-28

-28

-28

-28

-28

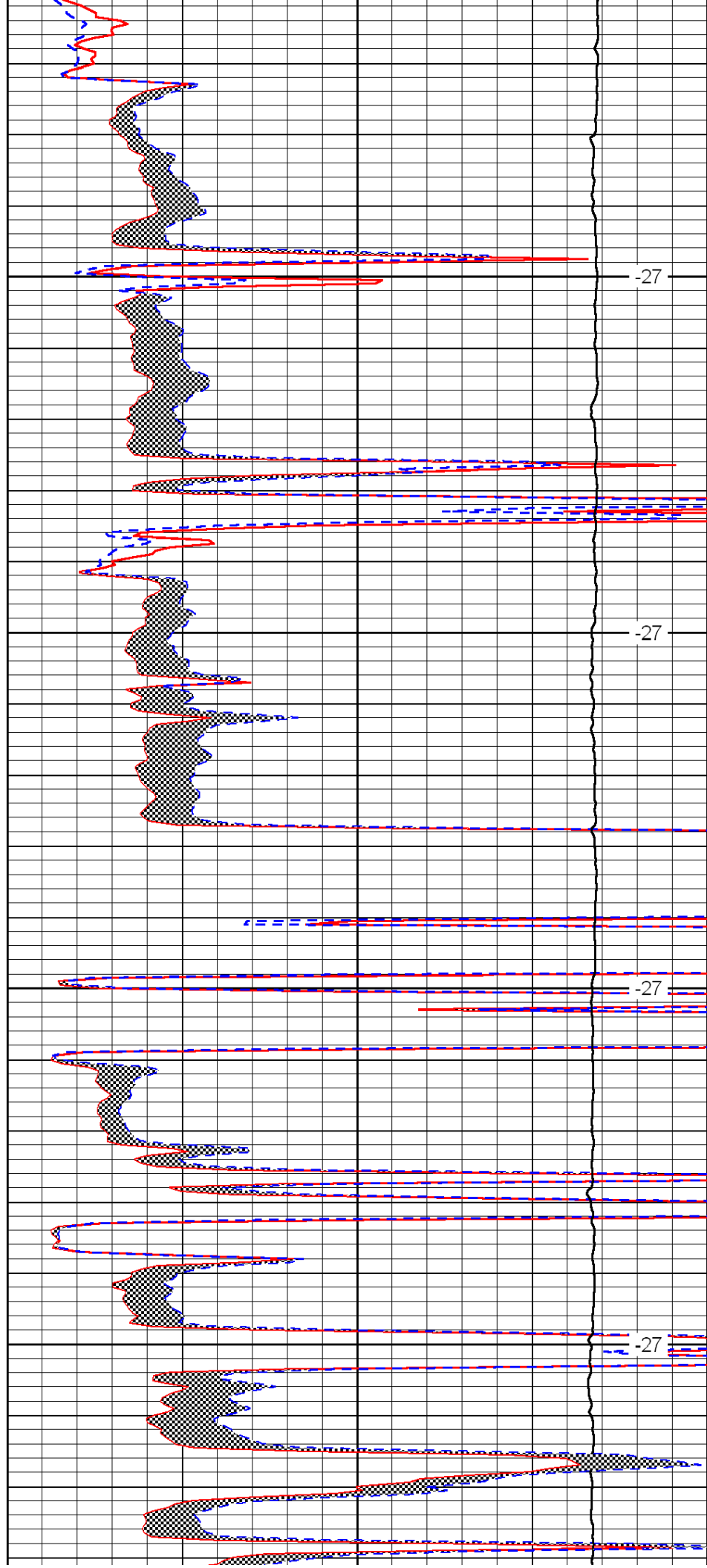


3950

4000

4050

4100

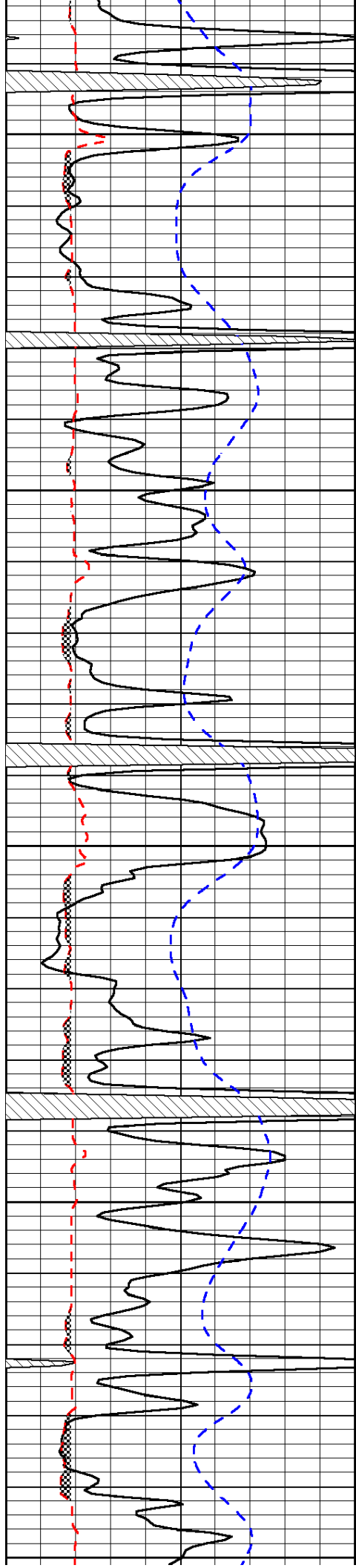


-27

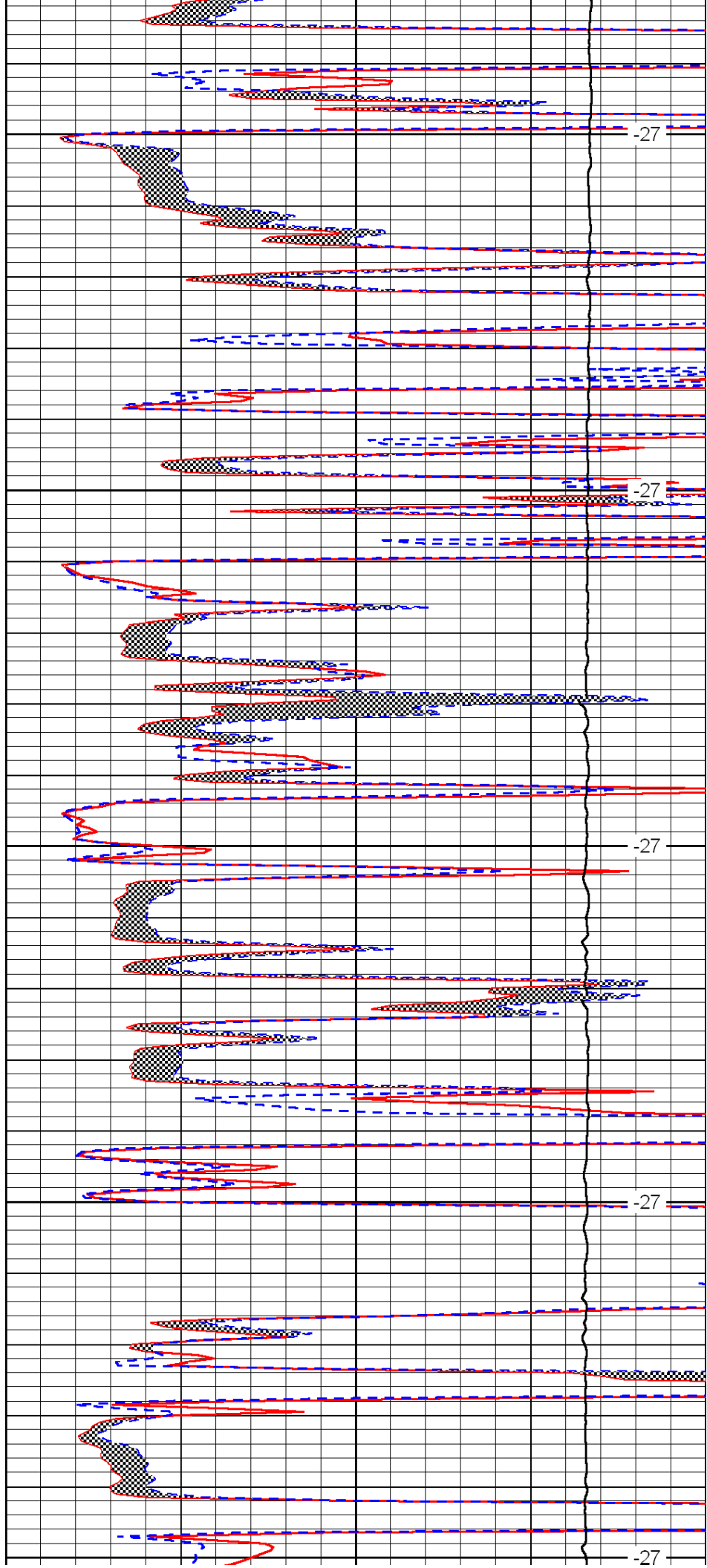
-27

-27

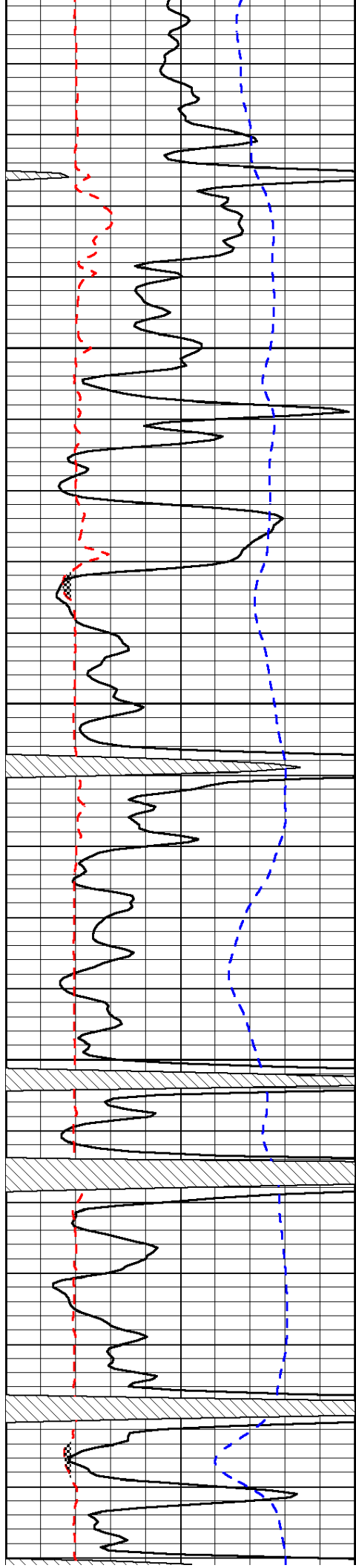
-27



4150
4200
4250
4300
4350



-27
-27
-27
-27
-27

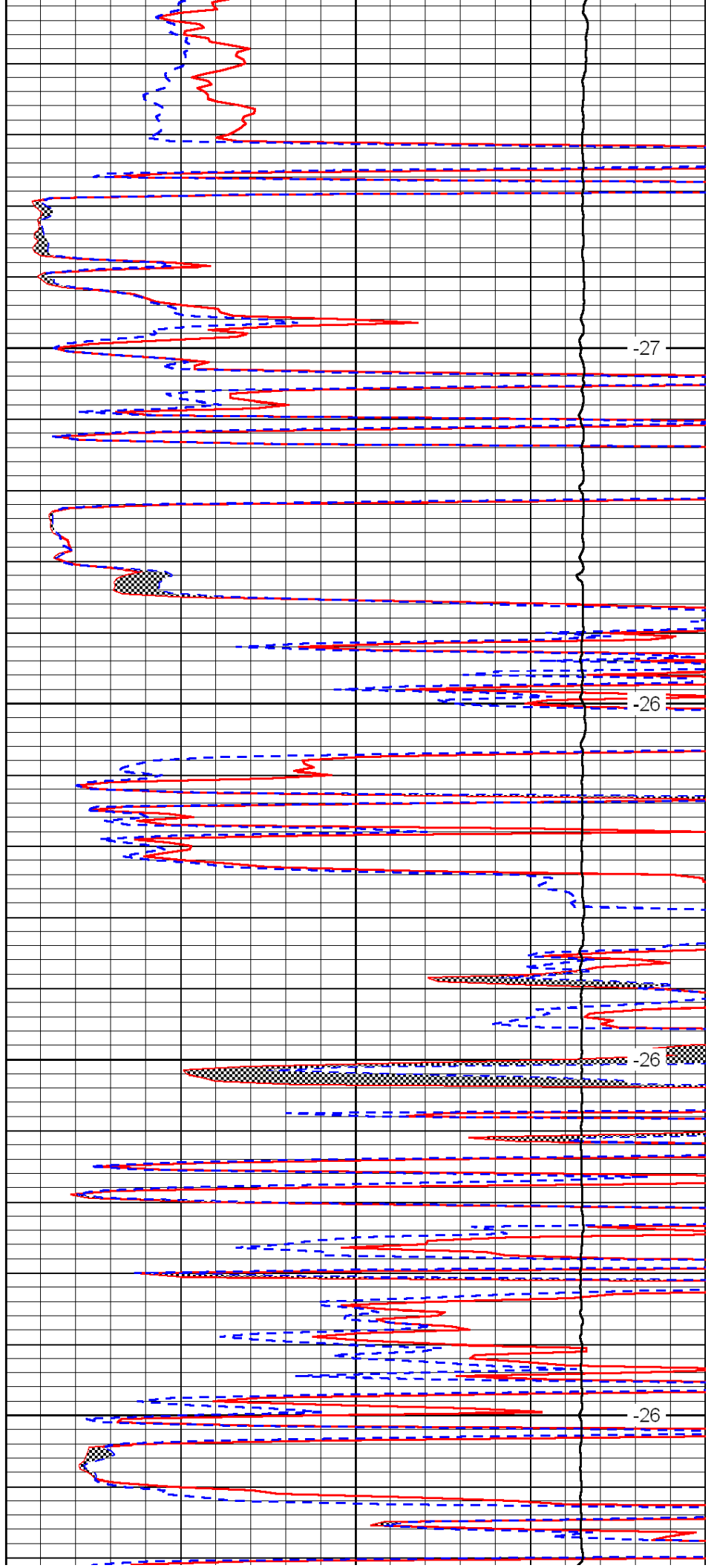


4400

4450

4500

4550

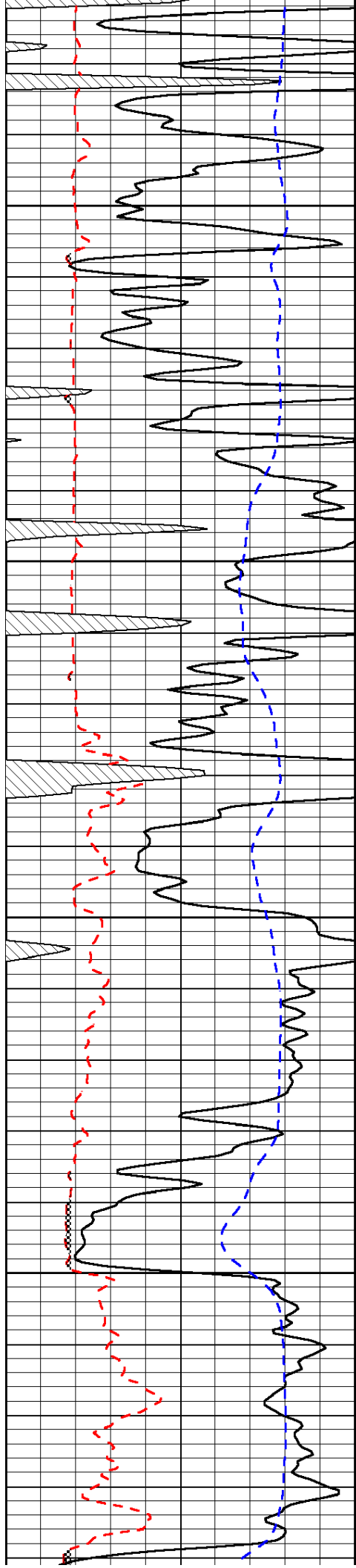


-27

-26

-26

-26

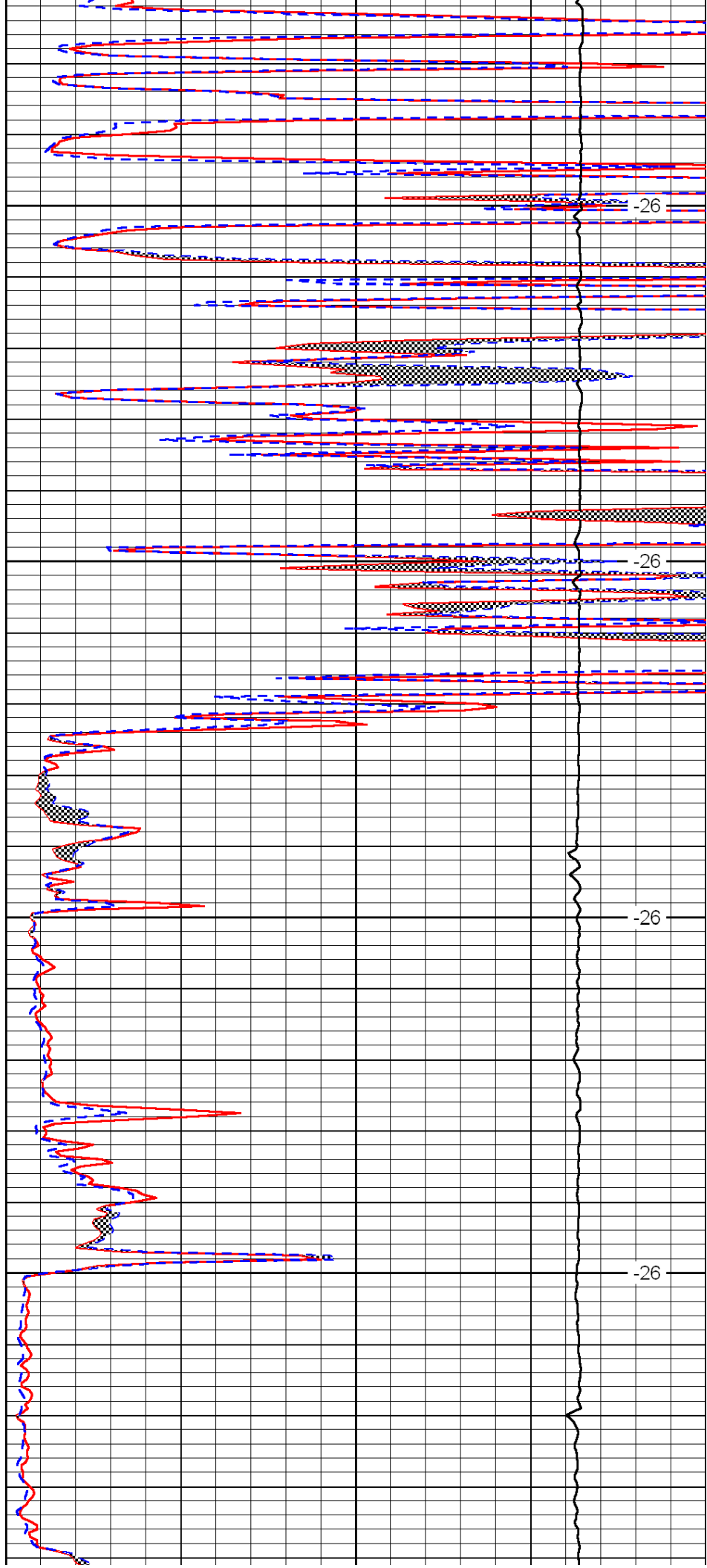


4600

4650

4700

4750

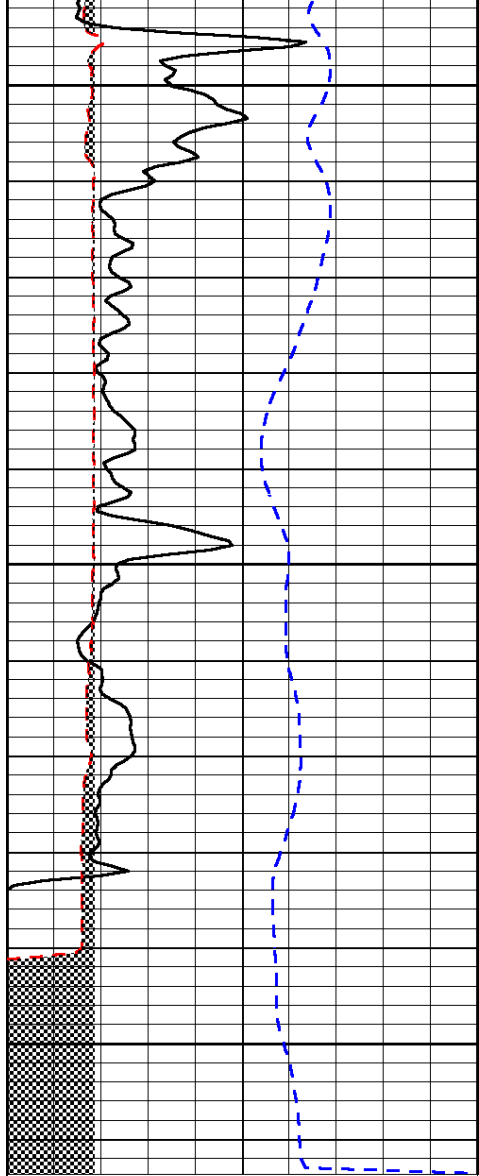


-26

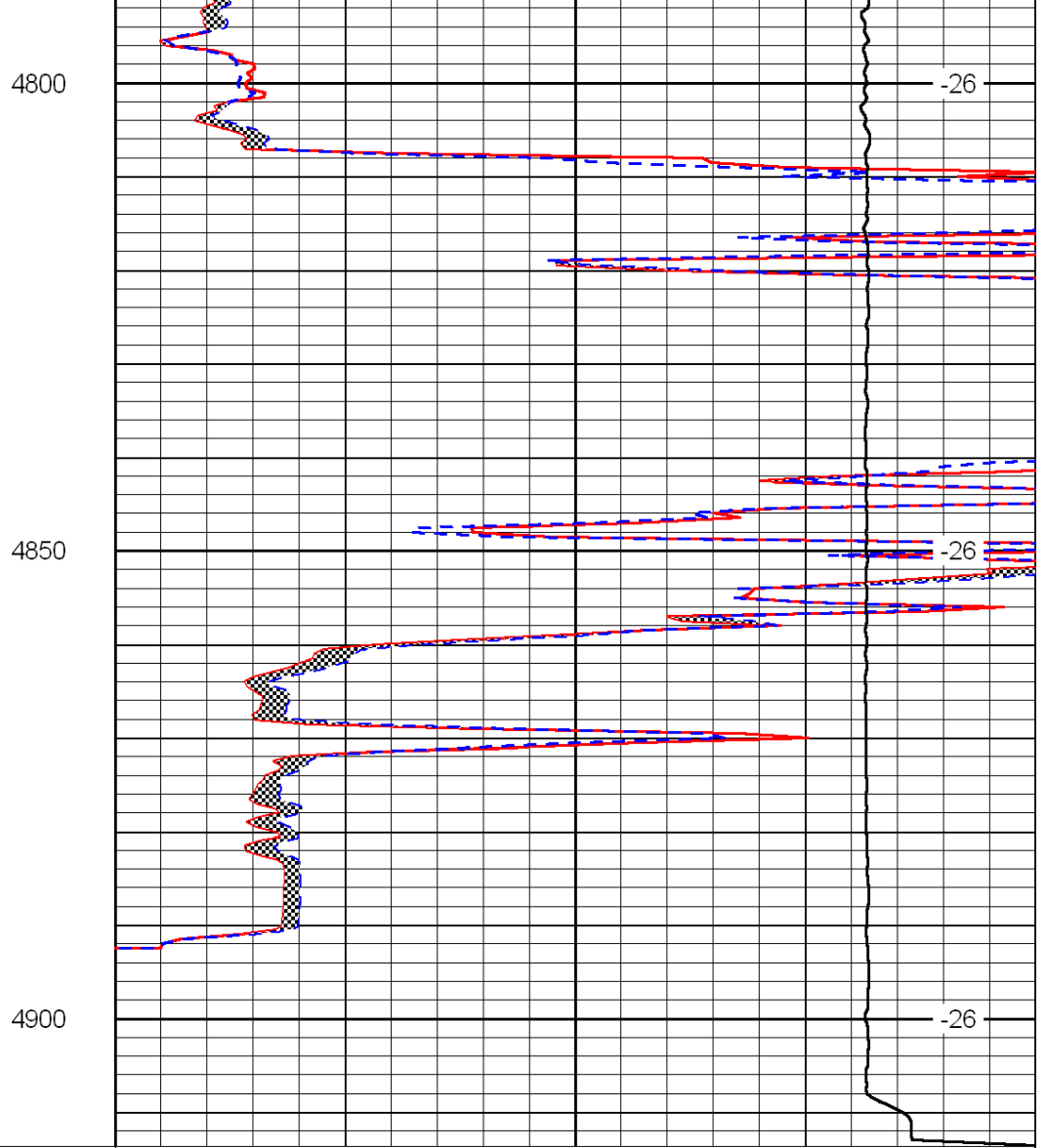
-26

-26

-26



0	Gamma Ray	150
6	Micro Log Caliper (GAPI)	16
-200	SP (mV)	0



0	Micro Inverse 1 X 1	40
0	Micro Normal 2'	40
15000	Line Weight	0

LSPD