



DIGITAL LOG (785) 625-3858

Borehole Compensated
Sonic Log

API No. 15-109-20,891-00-00

Company Russell Oil, Inc.
Well Tucker "A" No 1-29
Field Wildcat
County Logan State Kansas

Location 1420' FSL & 1540' FWL

Sec: 29 Twp: 15S Rge: 34W

Other Services
CNL/CDL
MEL/DIL

Permanent Datum Ground Level Elevation 3049
Log Measured From Kelly Bushing 8 Ft. Above Perm. Datum
Drilling Measured From Kelly Bushing

K.B. 3057
D.F. G.L. 3049

Date 05/03/2010

Run Number Two

Type Log BHC Sonic

Depth Driller 4900

Depth Logger 4908

Bottom Logged Interval 4897

Top Logged Interval 250

Type Fluid In Hole Chemical

Salinity, PPM CL 7,700

Density 9.1

Level Full

Max. Rec. Temp. F 127

Operating Rig Time 5 Hours

Equipment -- Location 17 Hays

Recorded By Mike Garrison

Witnessed By Steven D Angle Kevin J Bailey

Borehole Record				Casing Record			
Run No.	Bit	From	To	Size	Wgt.	From	To
1	12.25	00	266	8.625	24#	00	266
2	7.875	266	4900				

<<< Fold Here >>>

All interpretations are opinions based on inferences from electrical or other measurements and we cannot and do not guarantee the accuracy or correctness of any interpretation, and we shall not, except in the case of gross or willful negligence on our part, be liable or responsible for any loss, costs, damages, or expenses incurred or sustained by anyone resulting from any interpretation made by any of our officers, agents or employees. These interpretations are also subject to our general terms and conditions set out in our current Price Schedule.

Comments

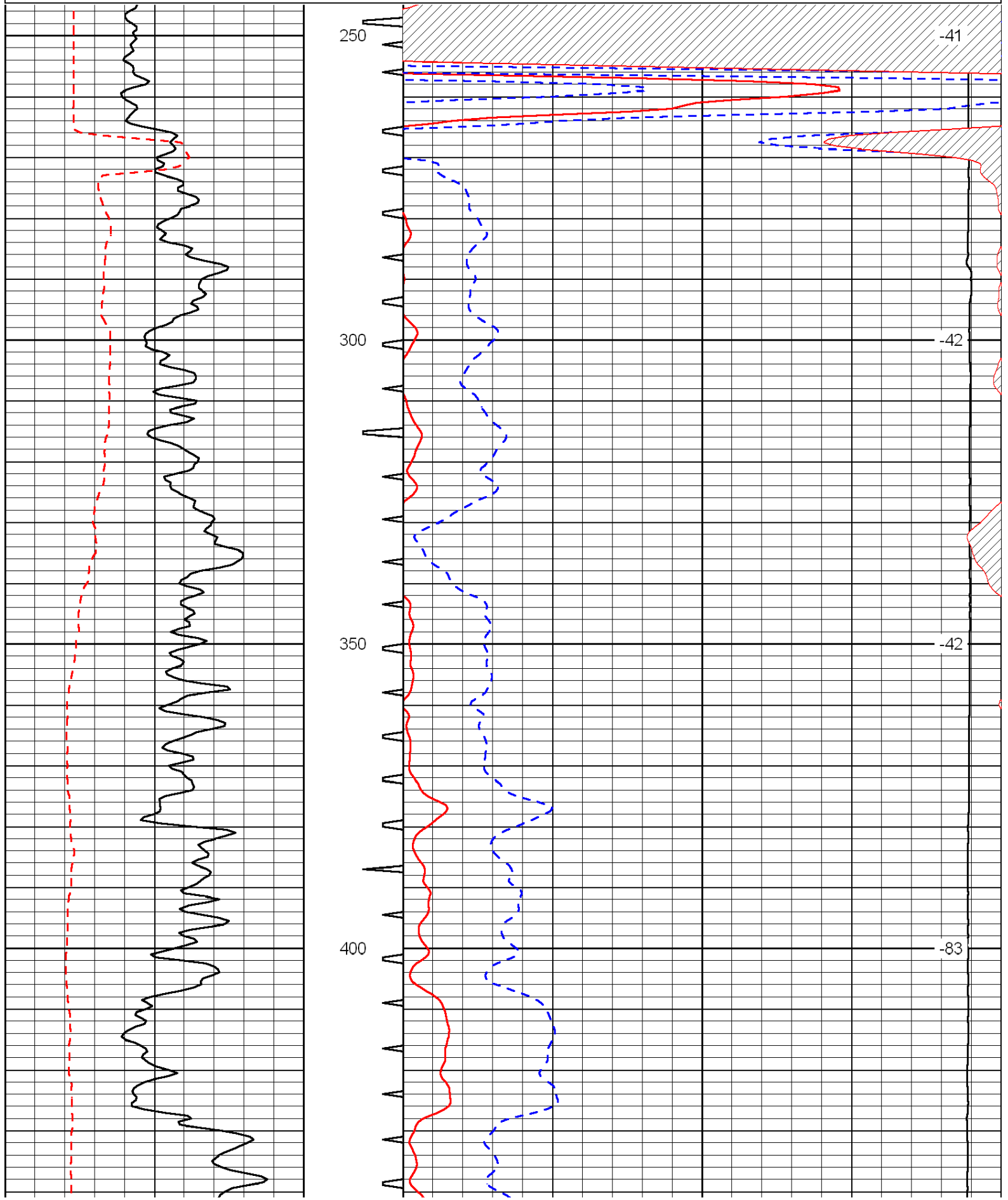
Thank you for using Log-Tech, Inc.
(785) 625-3858

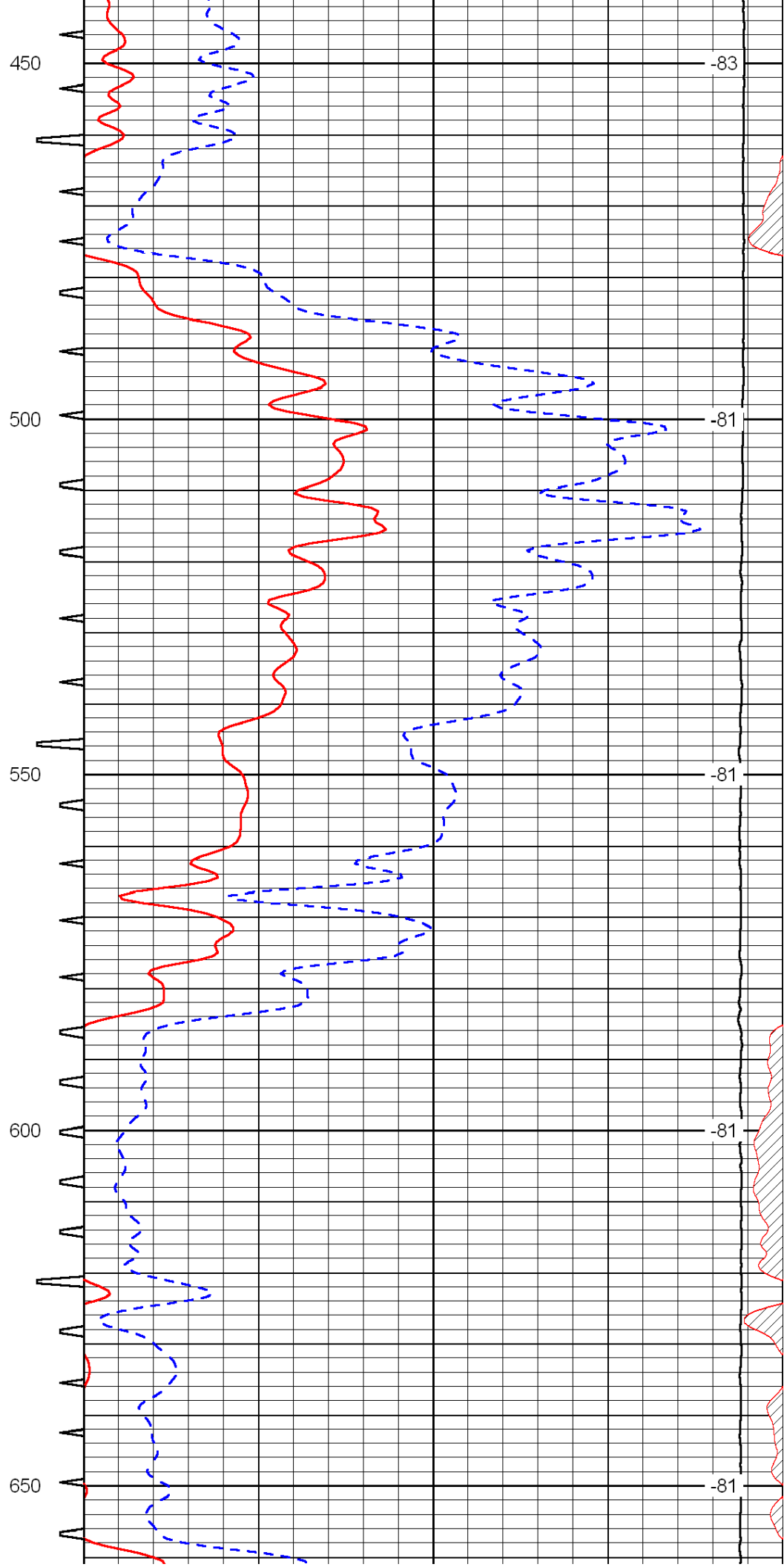
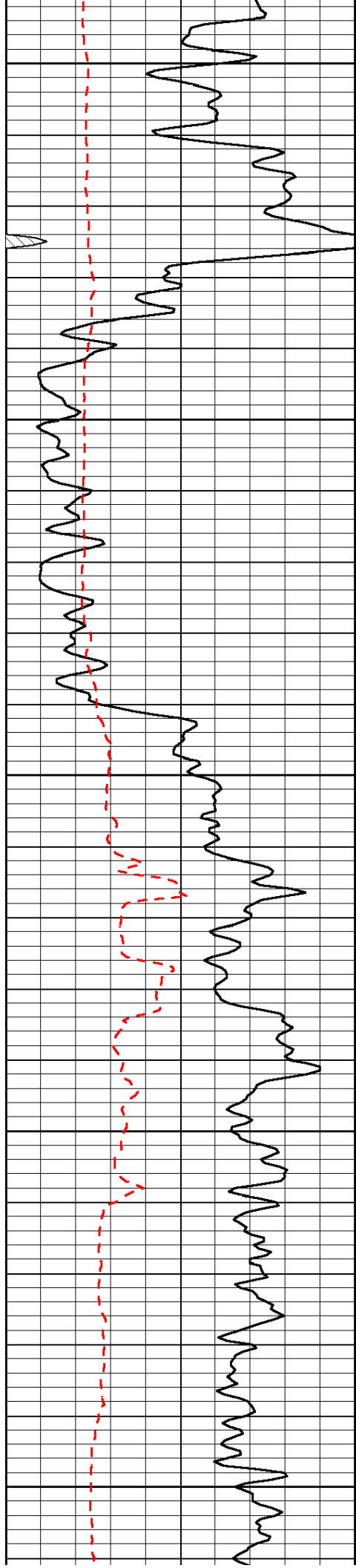
West of Pence to 25 Rd, North past Bison Rd (1/4) East Into

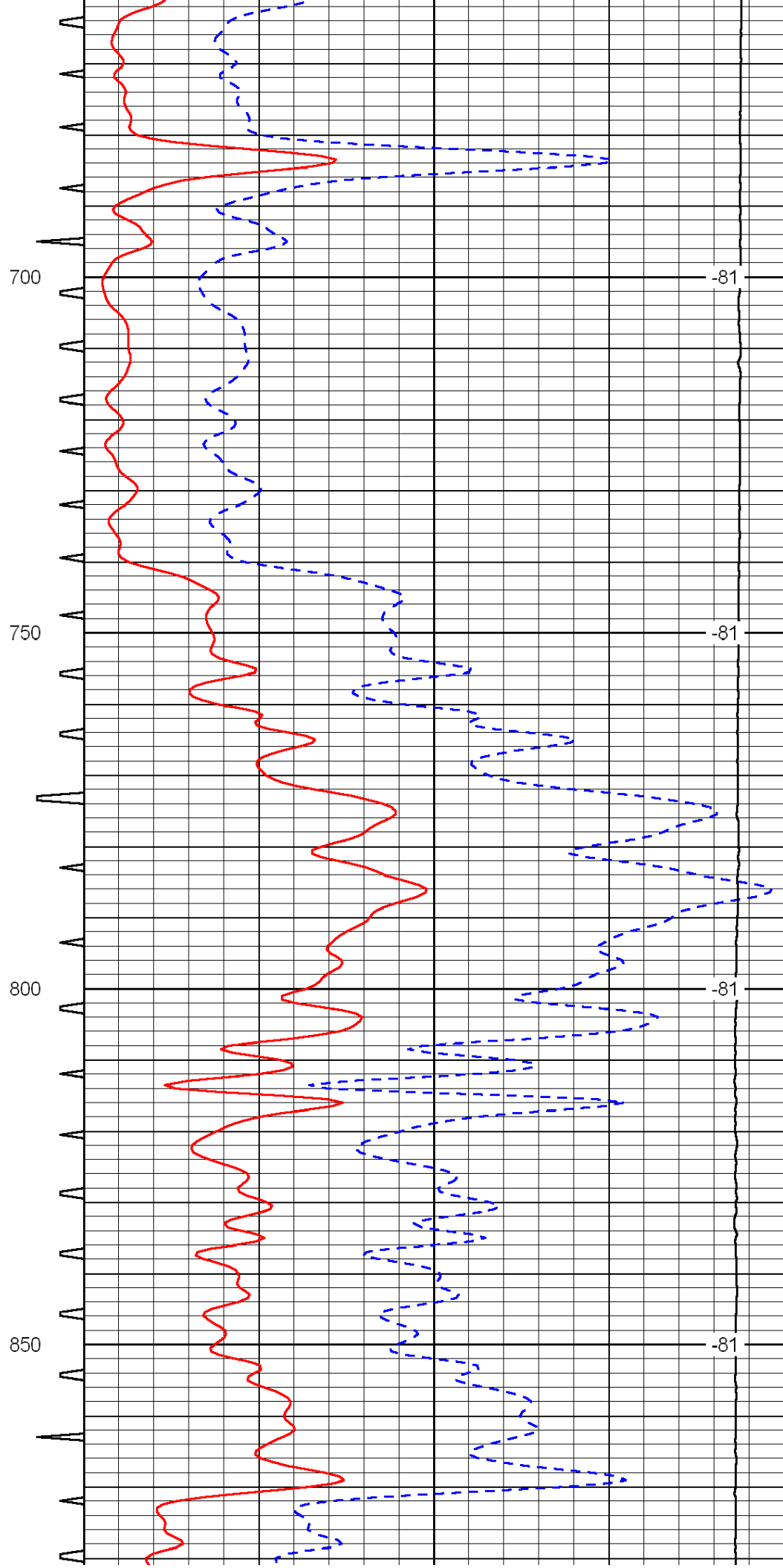
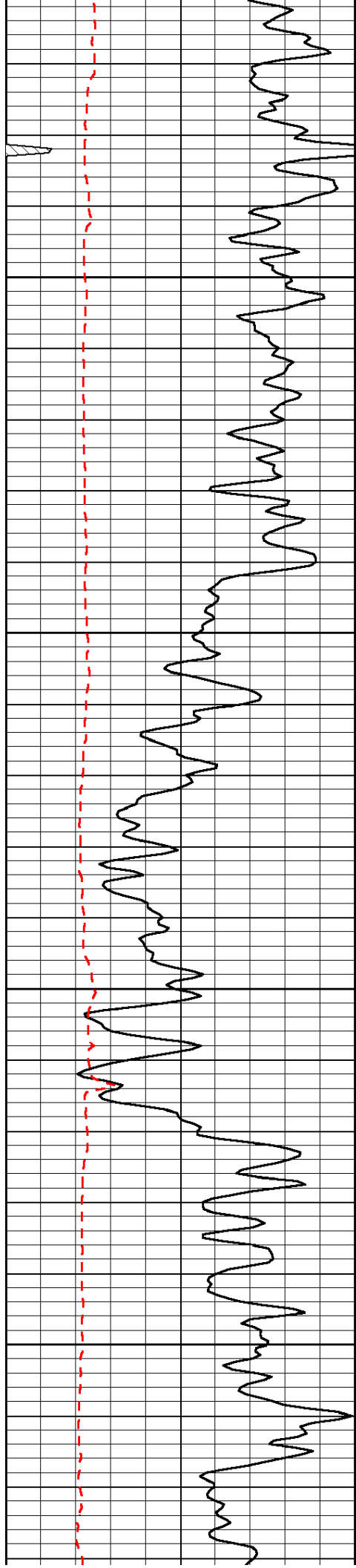
Database File: c:\warrior\data\russell_tucker a no 1-29\russell.db
 Dataset Pathname: dil/russtck
 Presentation Format: sonic
 Dataset Creation: Mon May 03 05:08:17 2010
 Charted by: Depth in Feet scaled 1:240

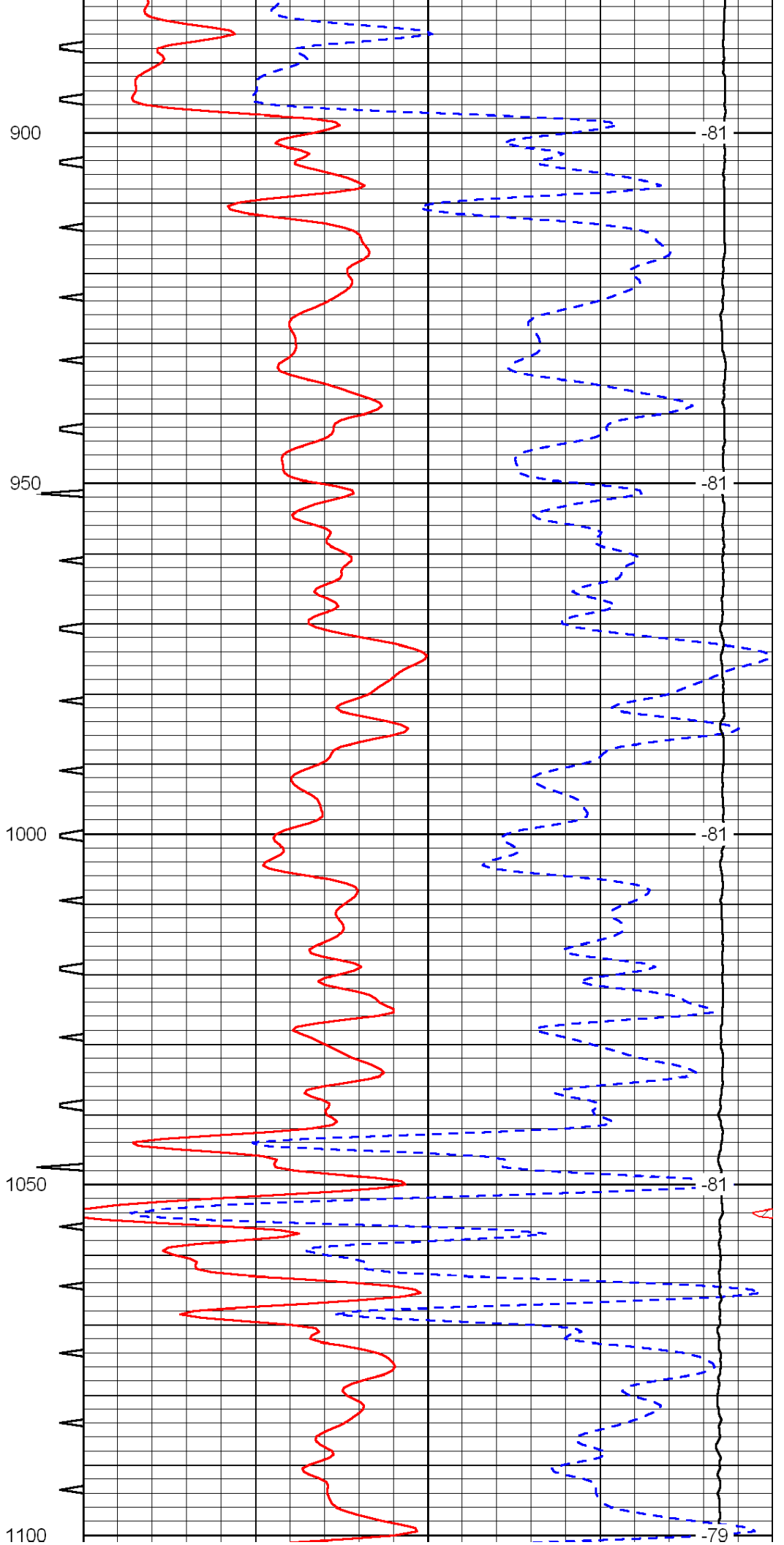
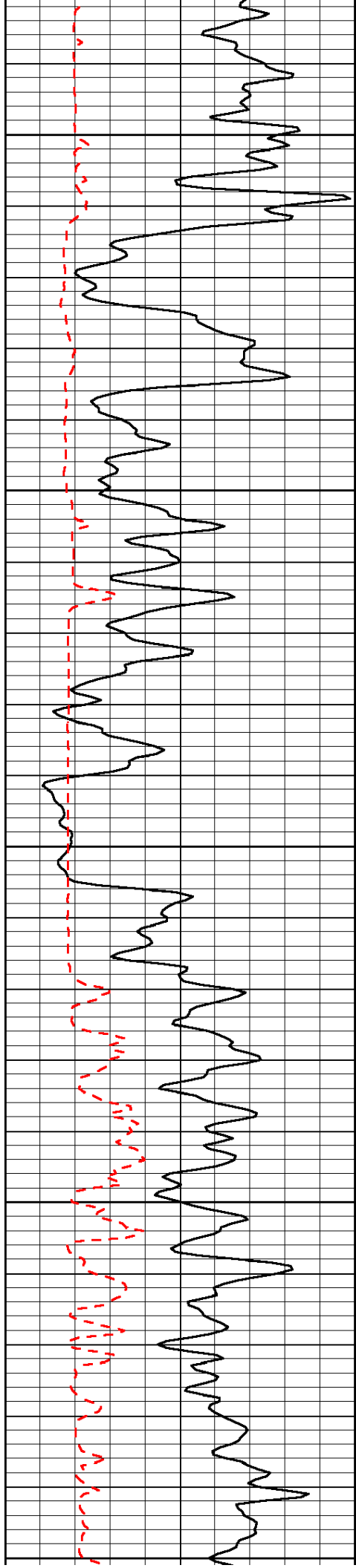
0	Gamma Ray	150	Sonic Int	140	Delta Time (usec/ft)	40
150	Gamma Ray	300	5	0	SPOR	-10
6	Caliper (GAPI)	16		15000	LTEN (lb)	0

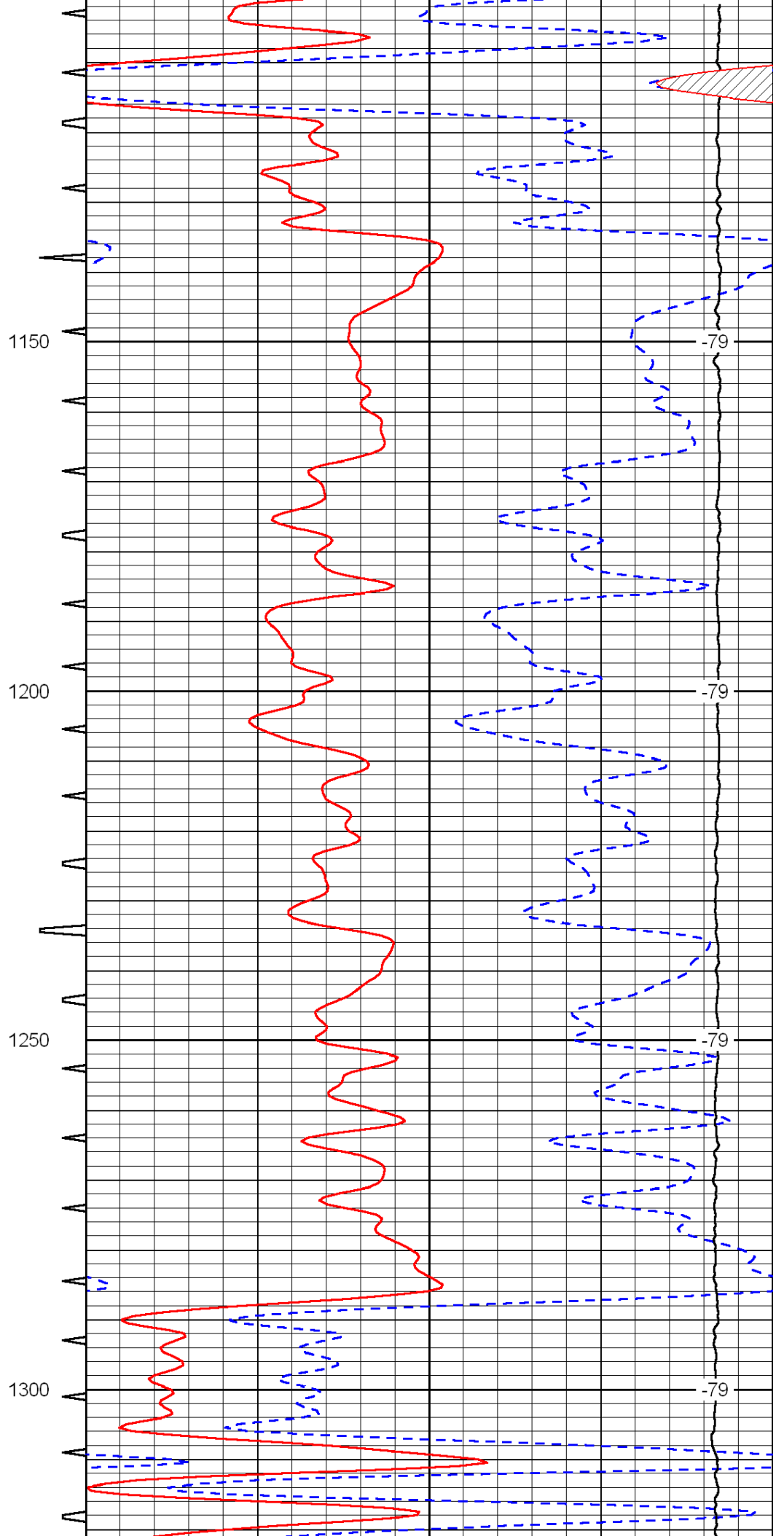
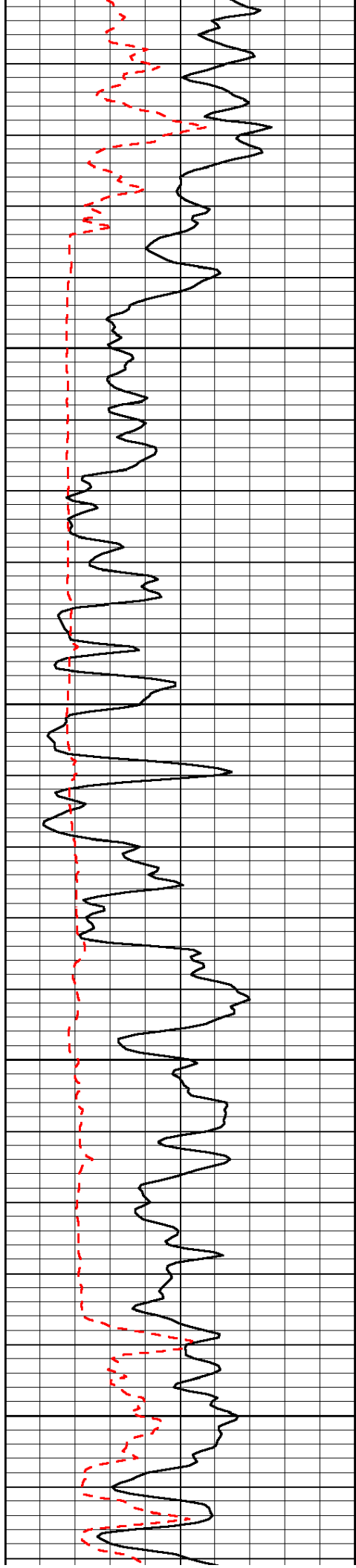
LSPD

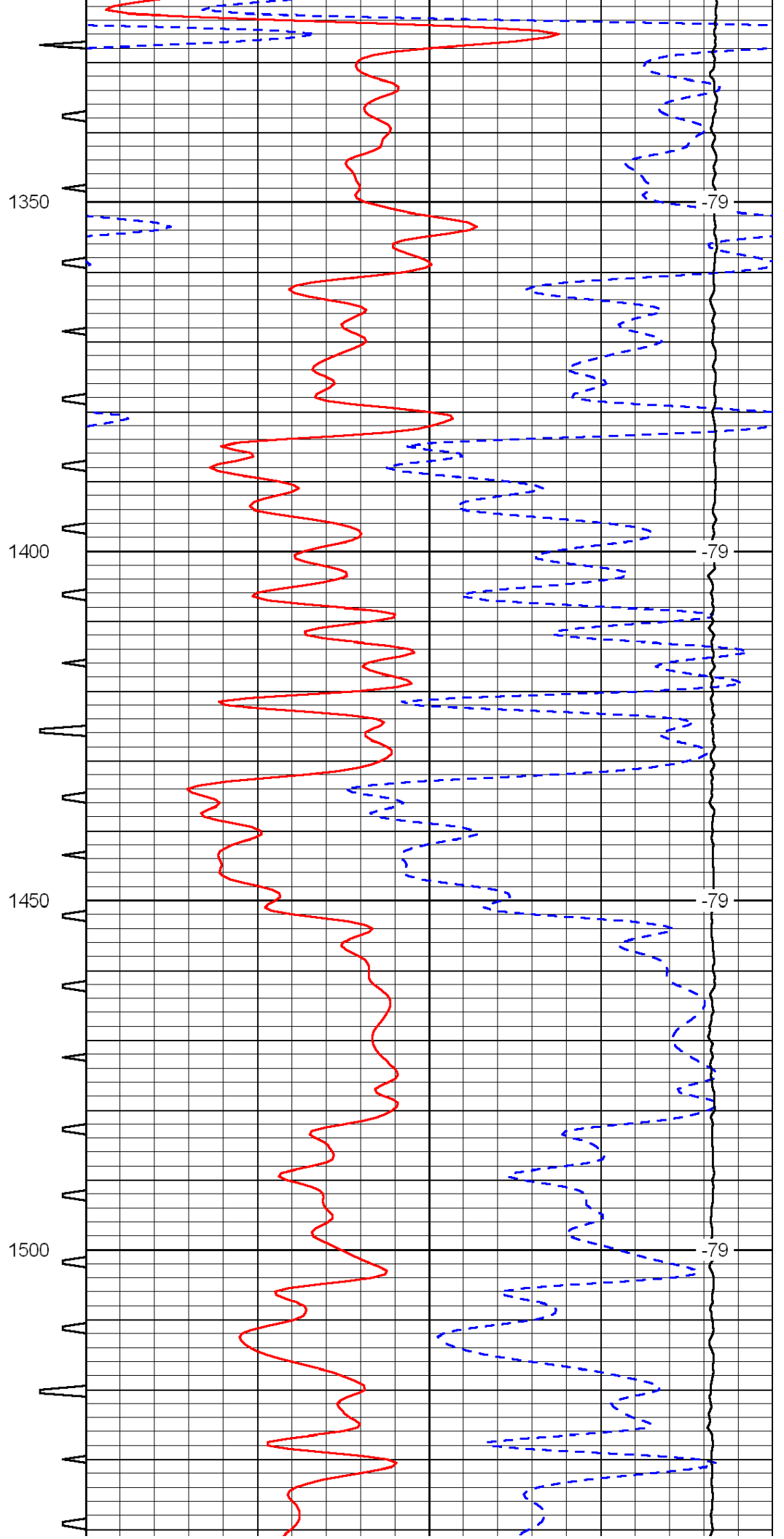
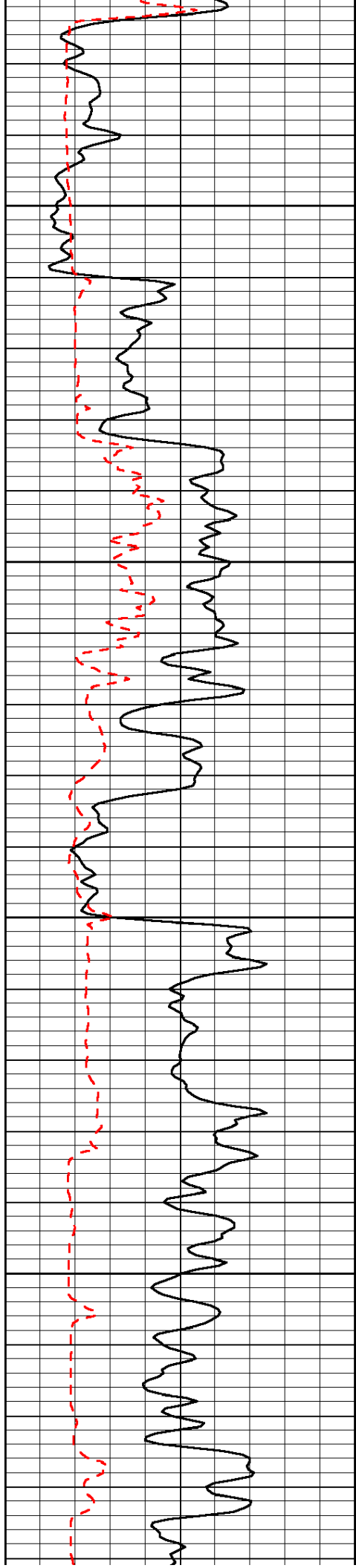


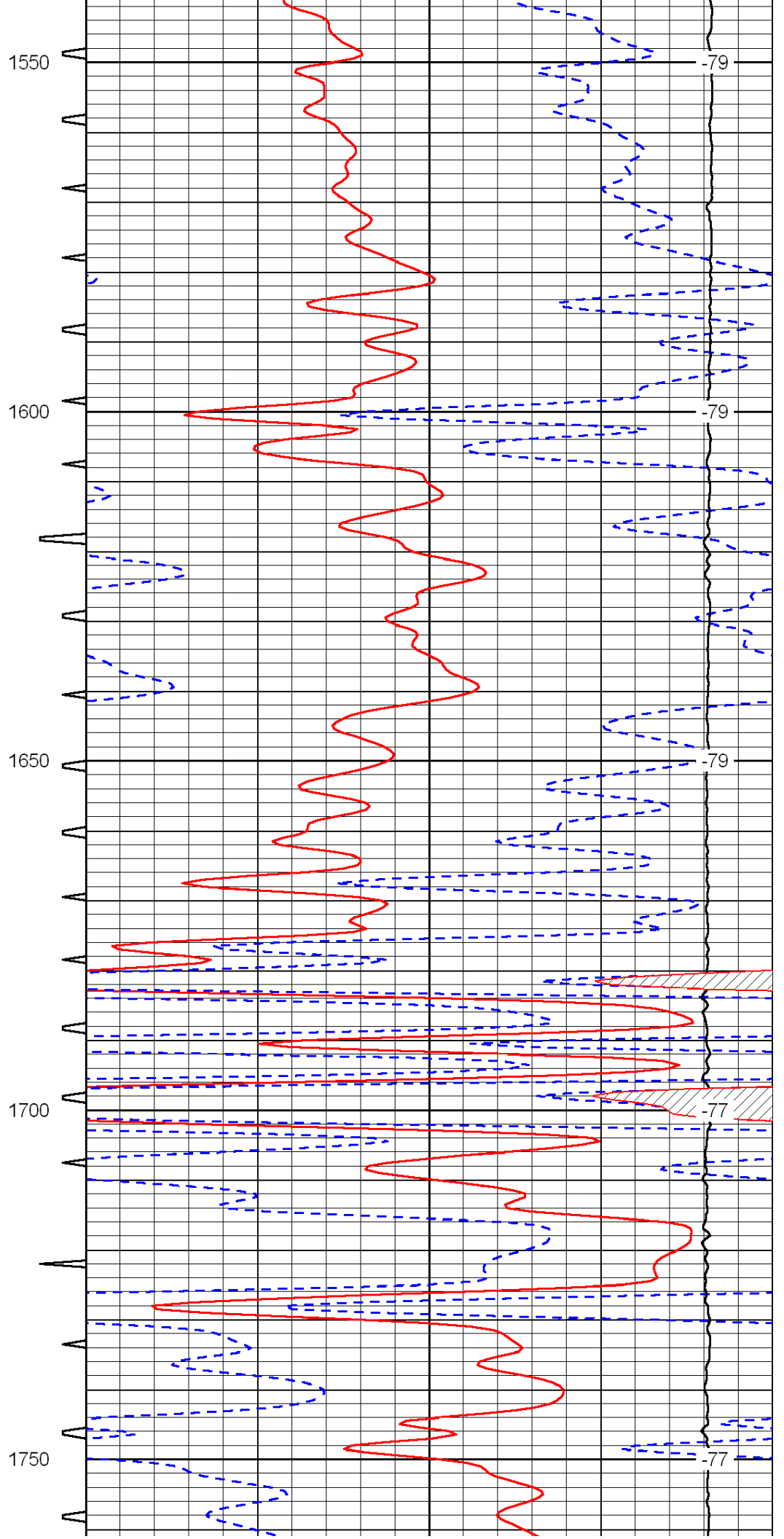
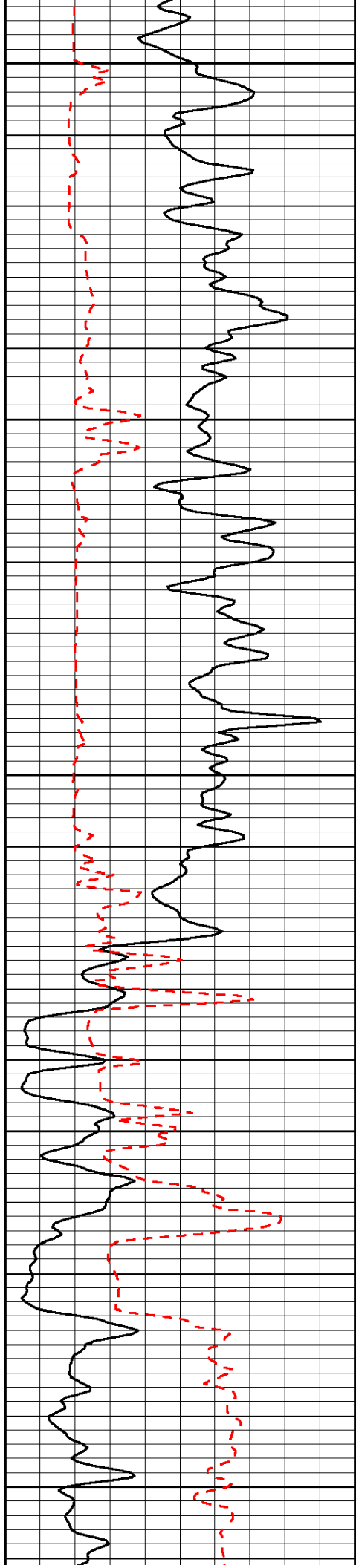


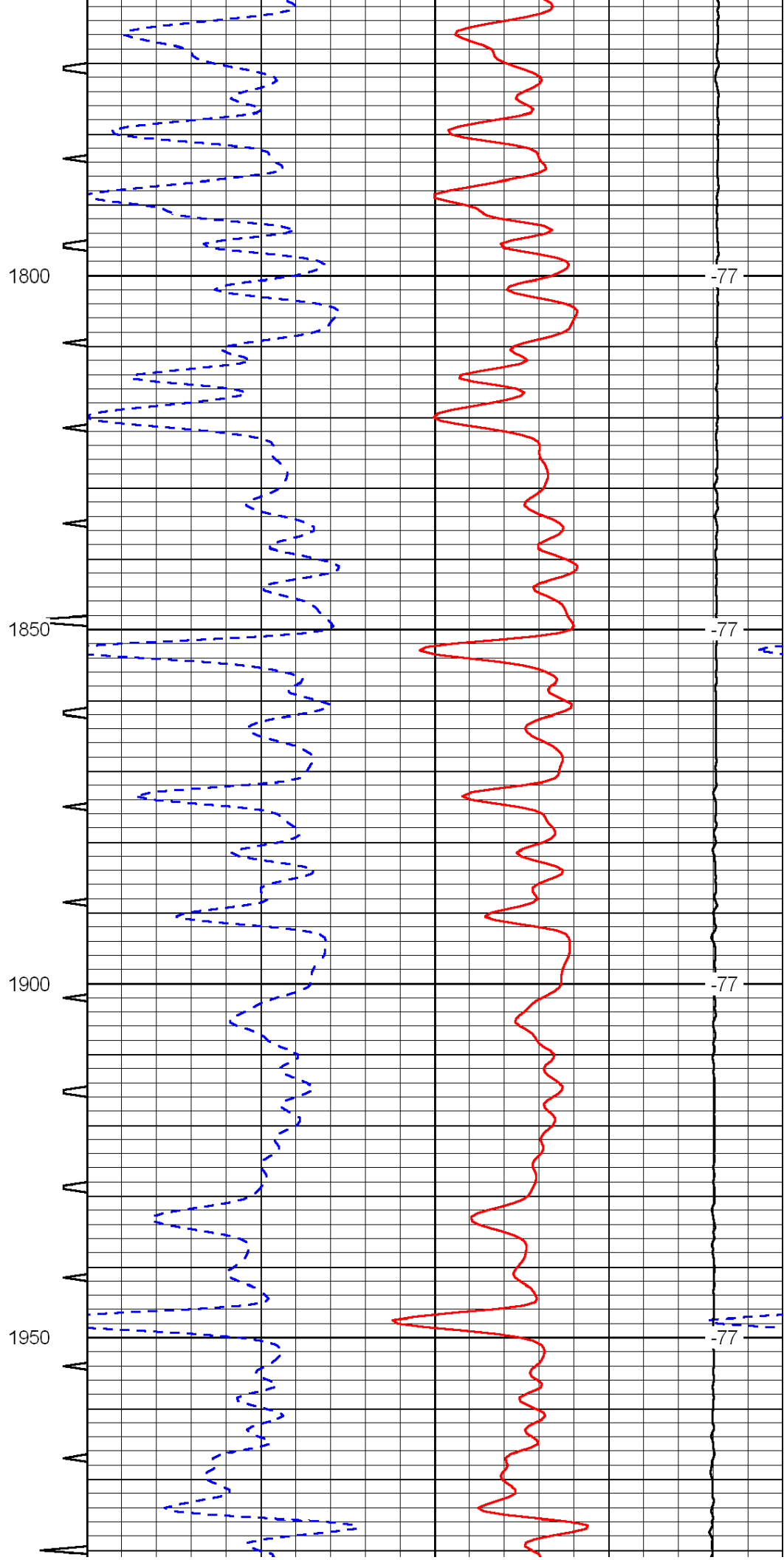
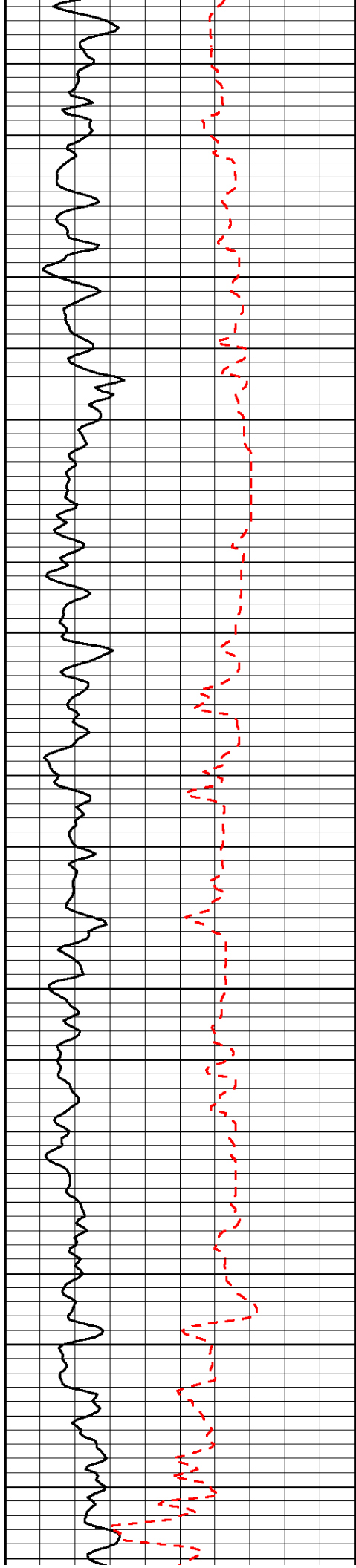


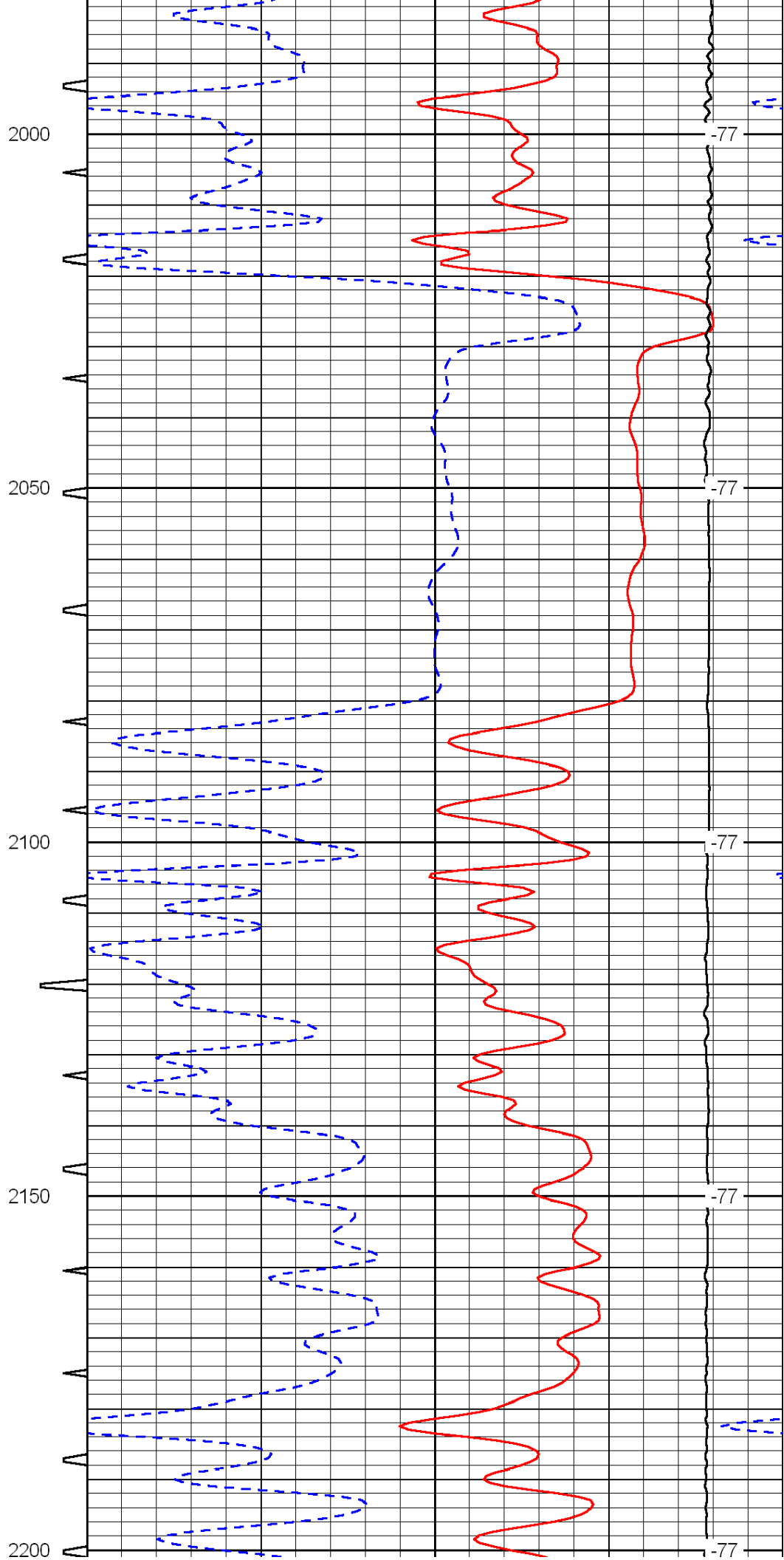
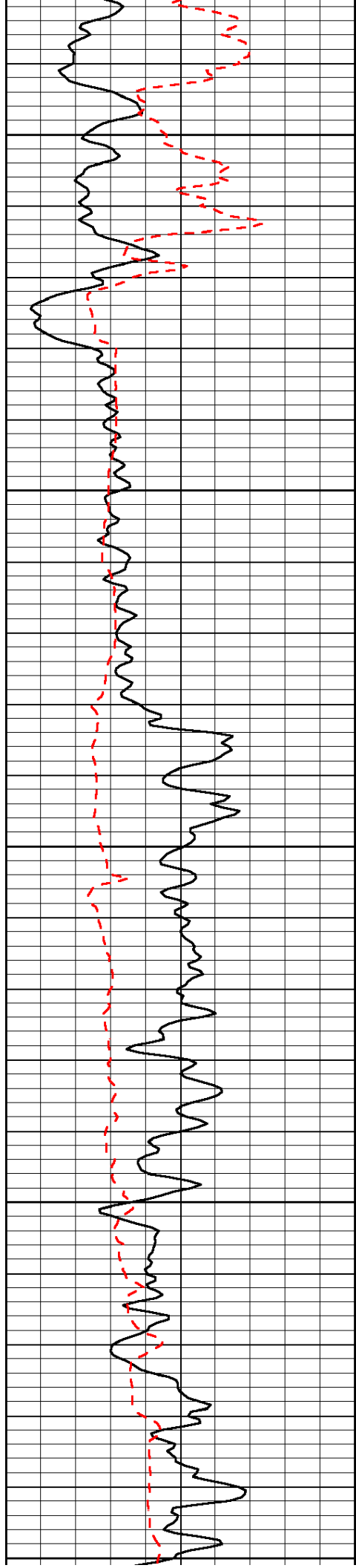


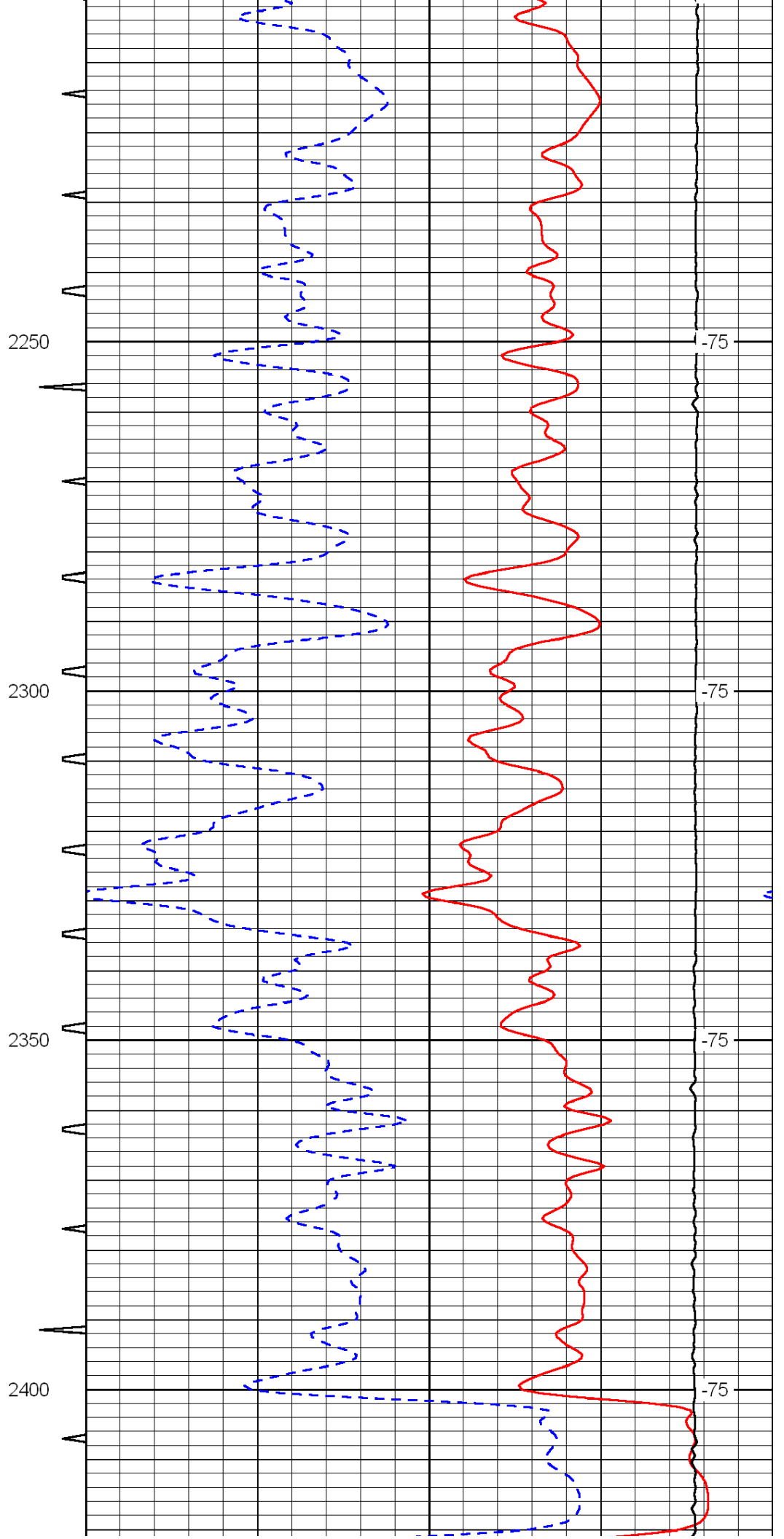
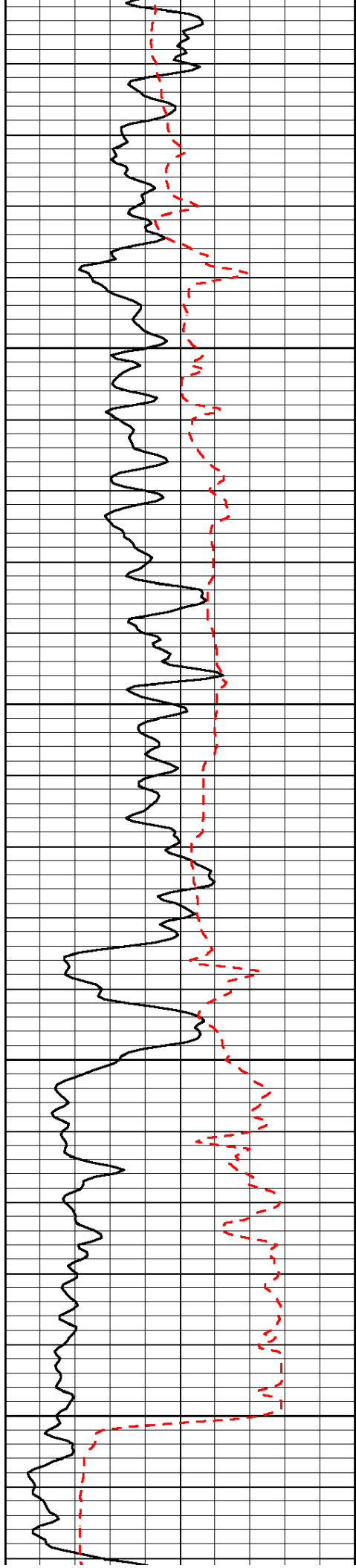


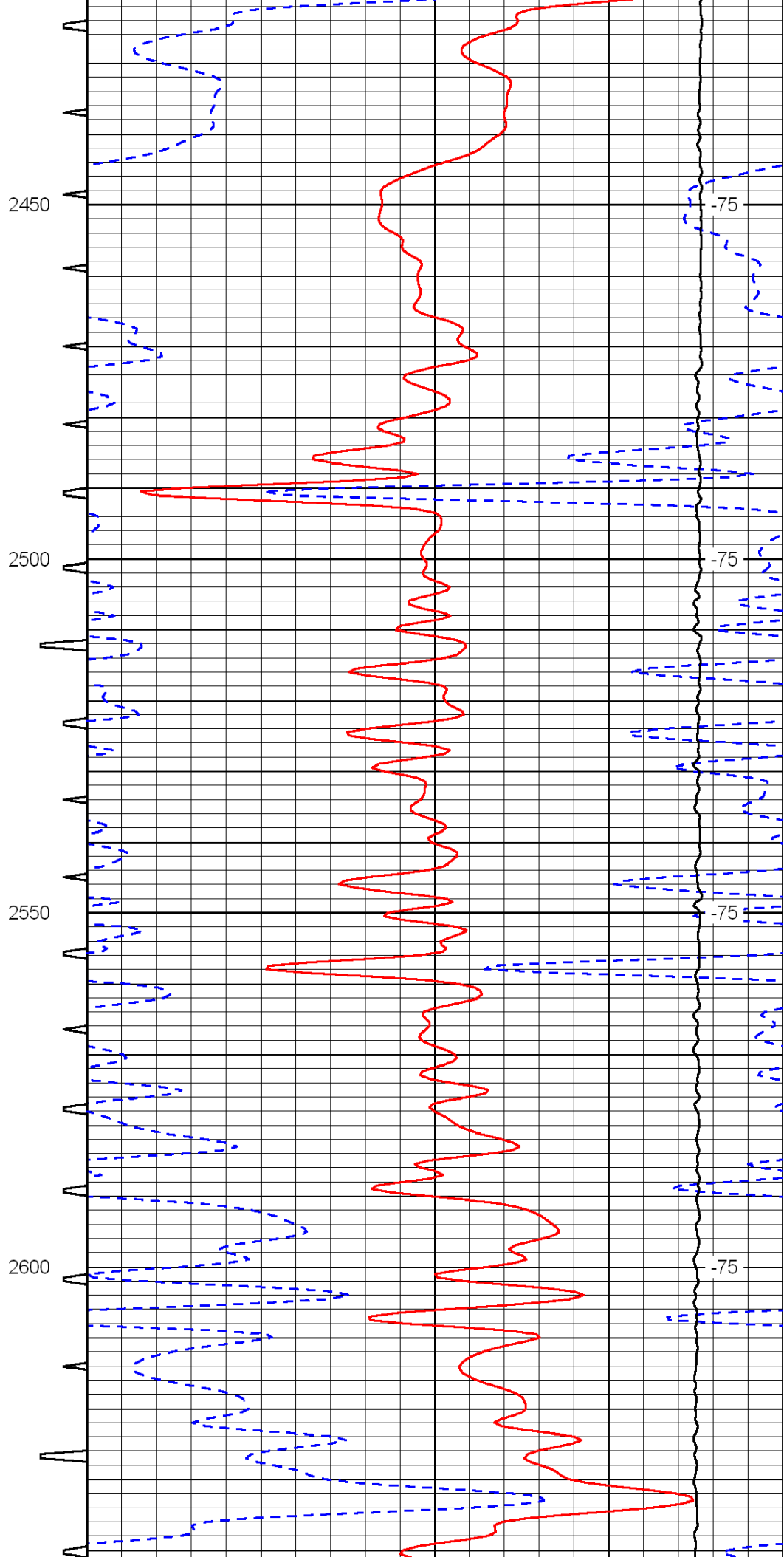
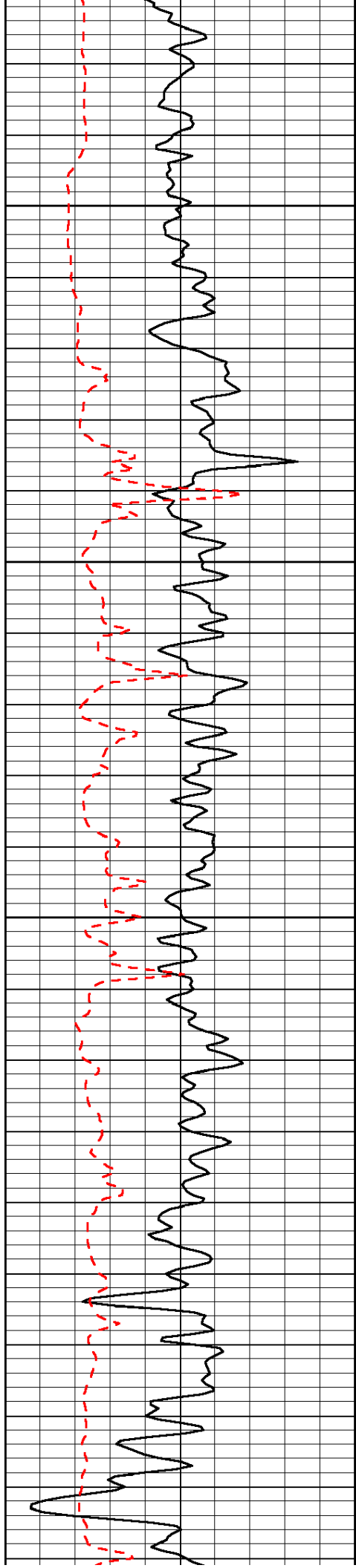


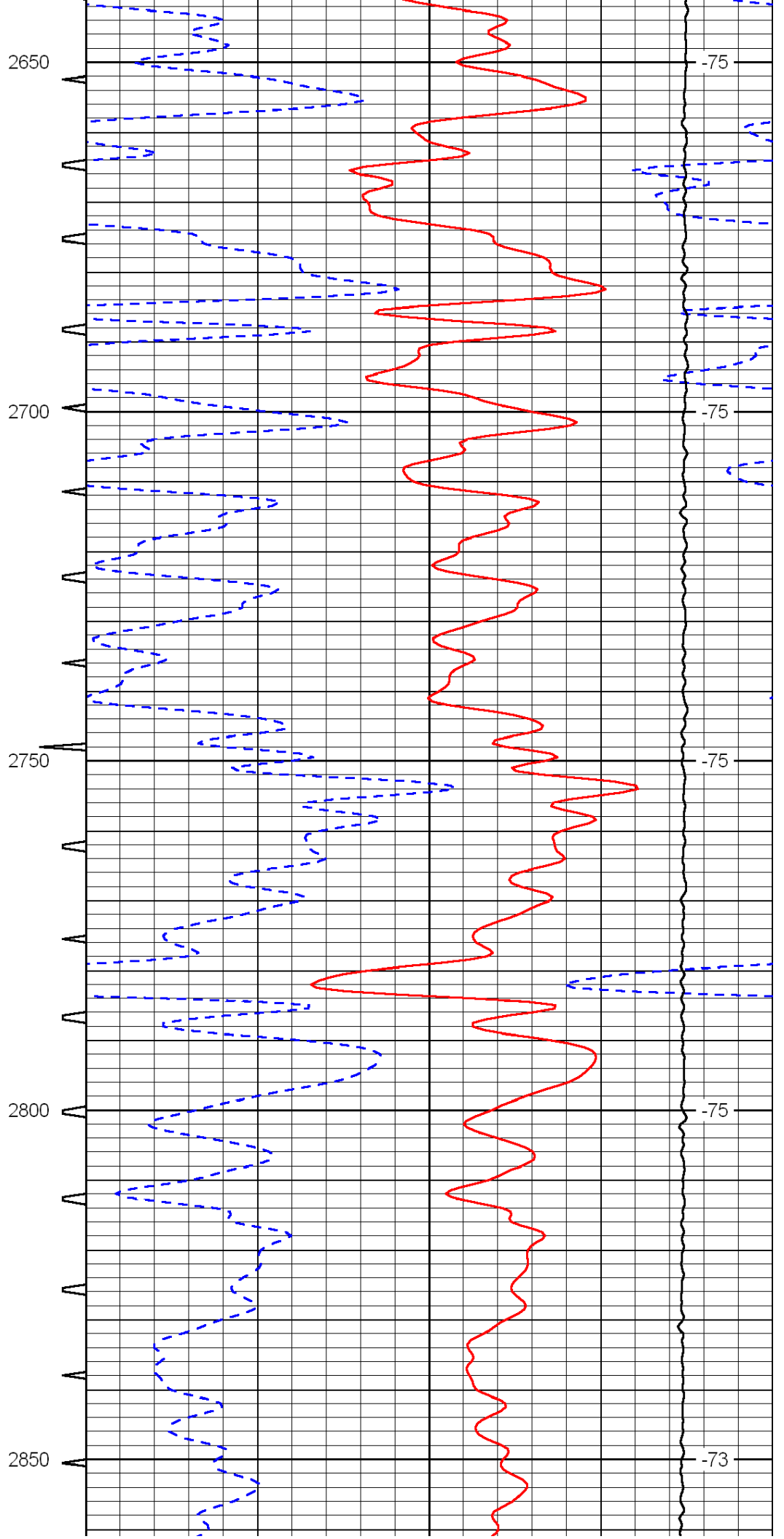
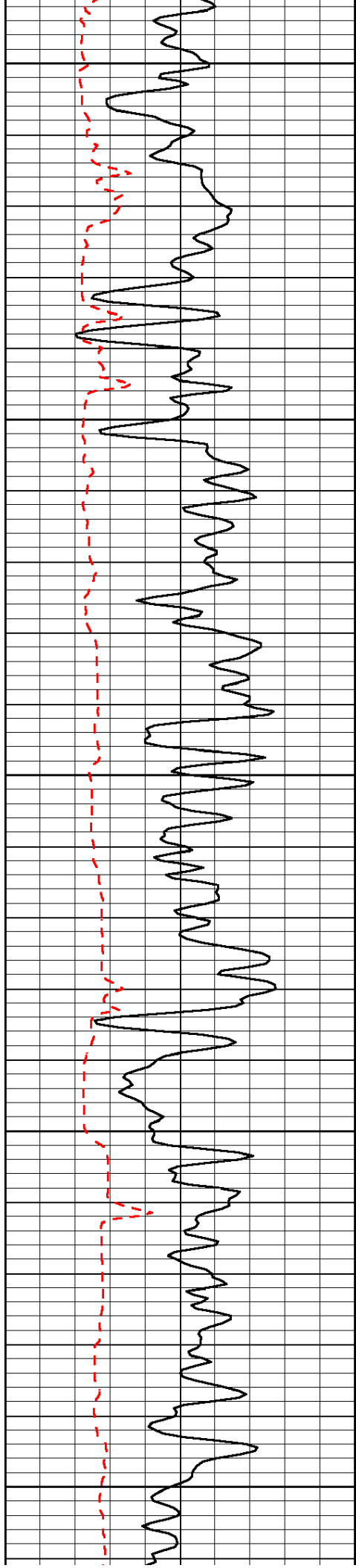


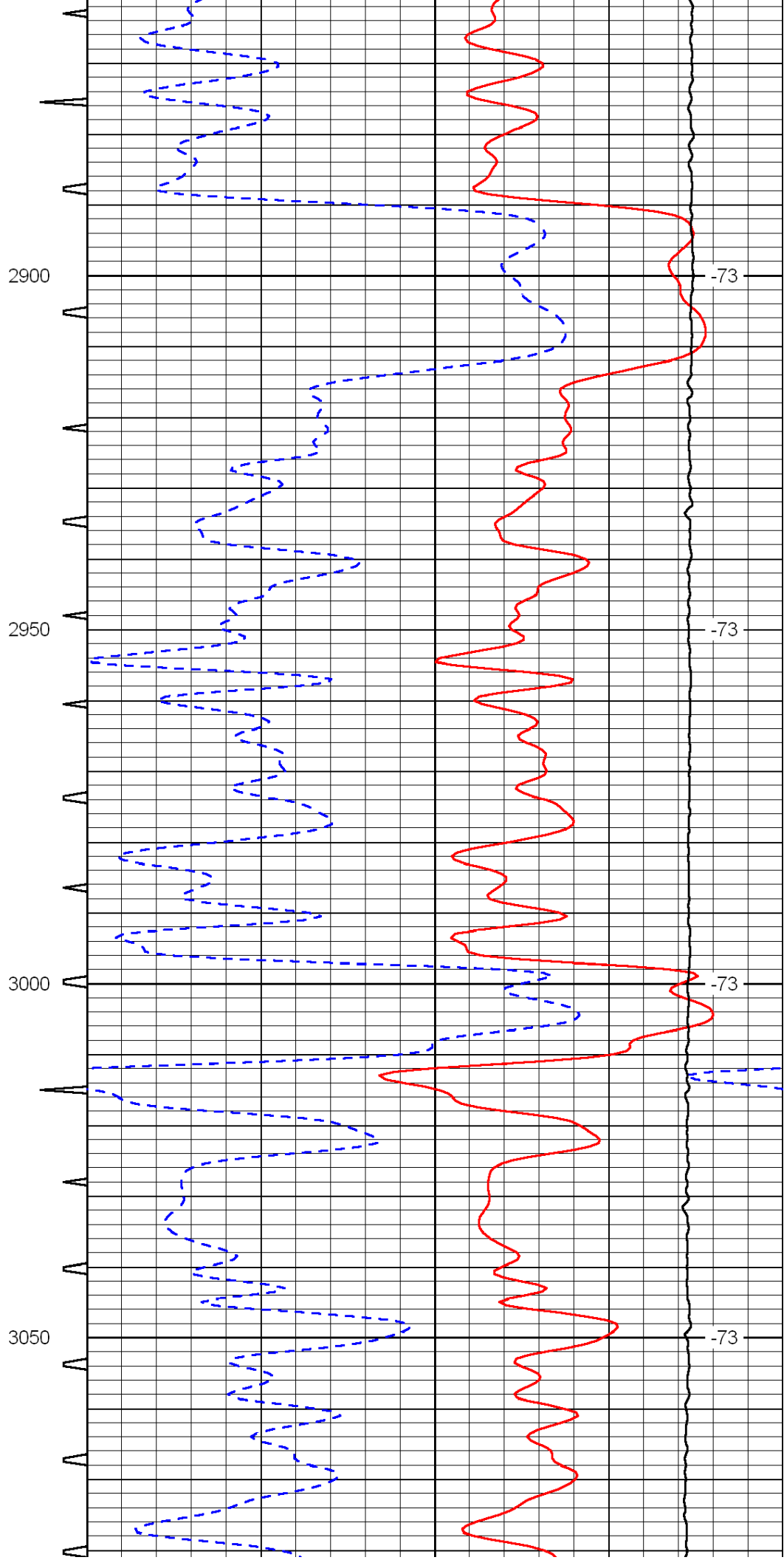
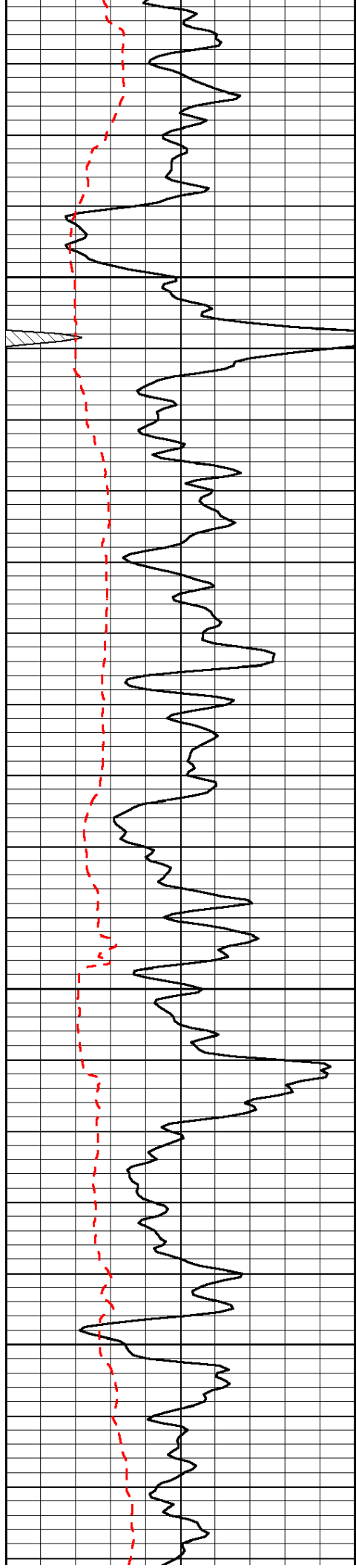


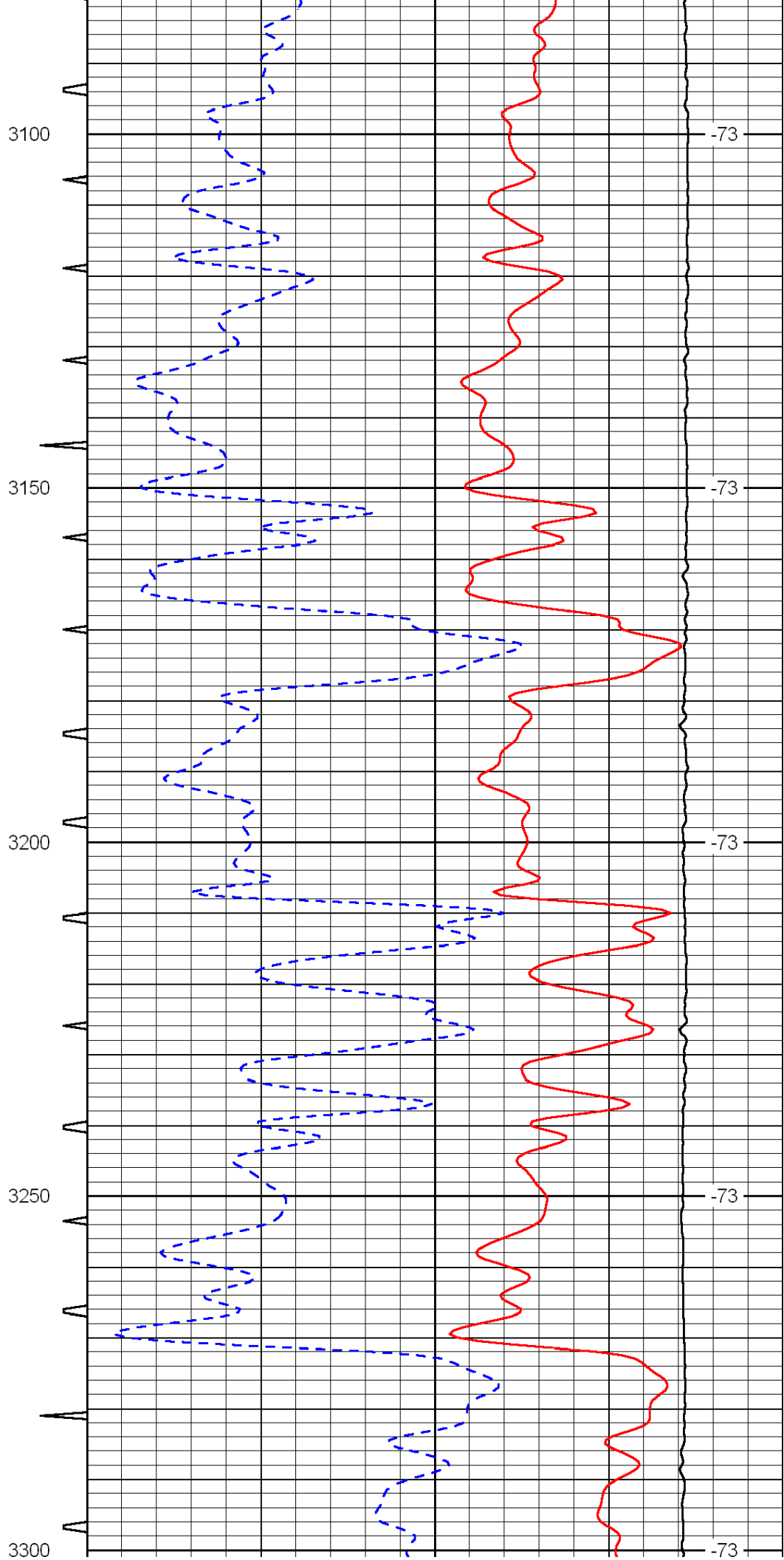
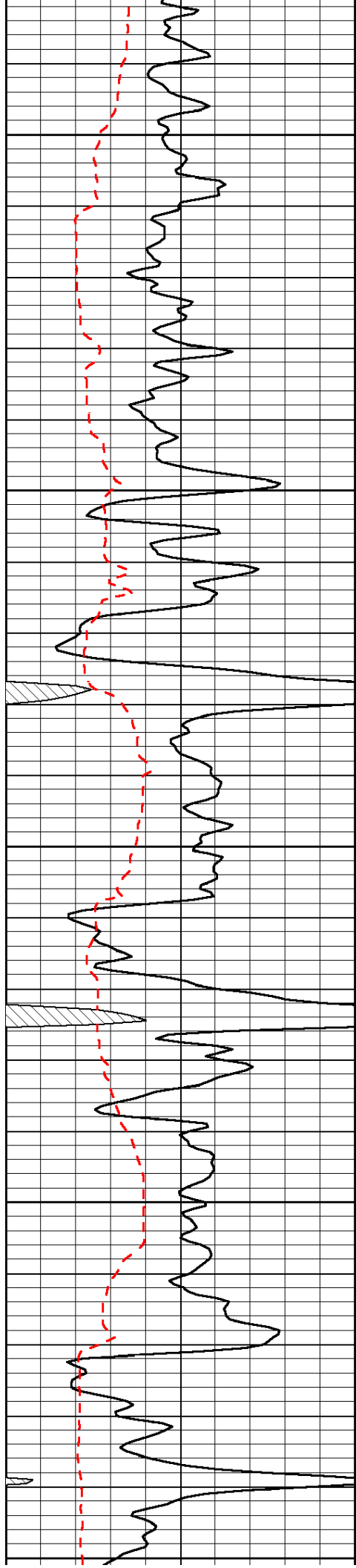


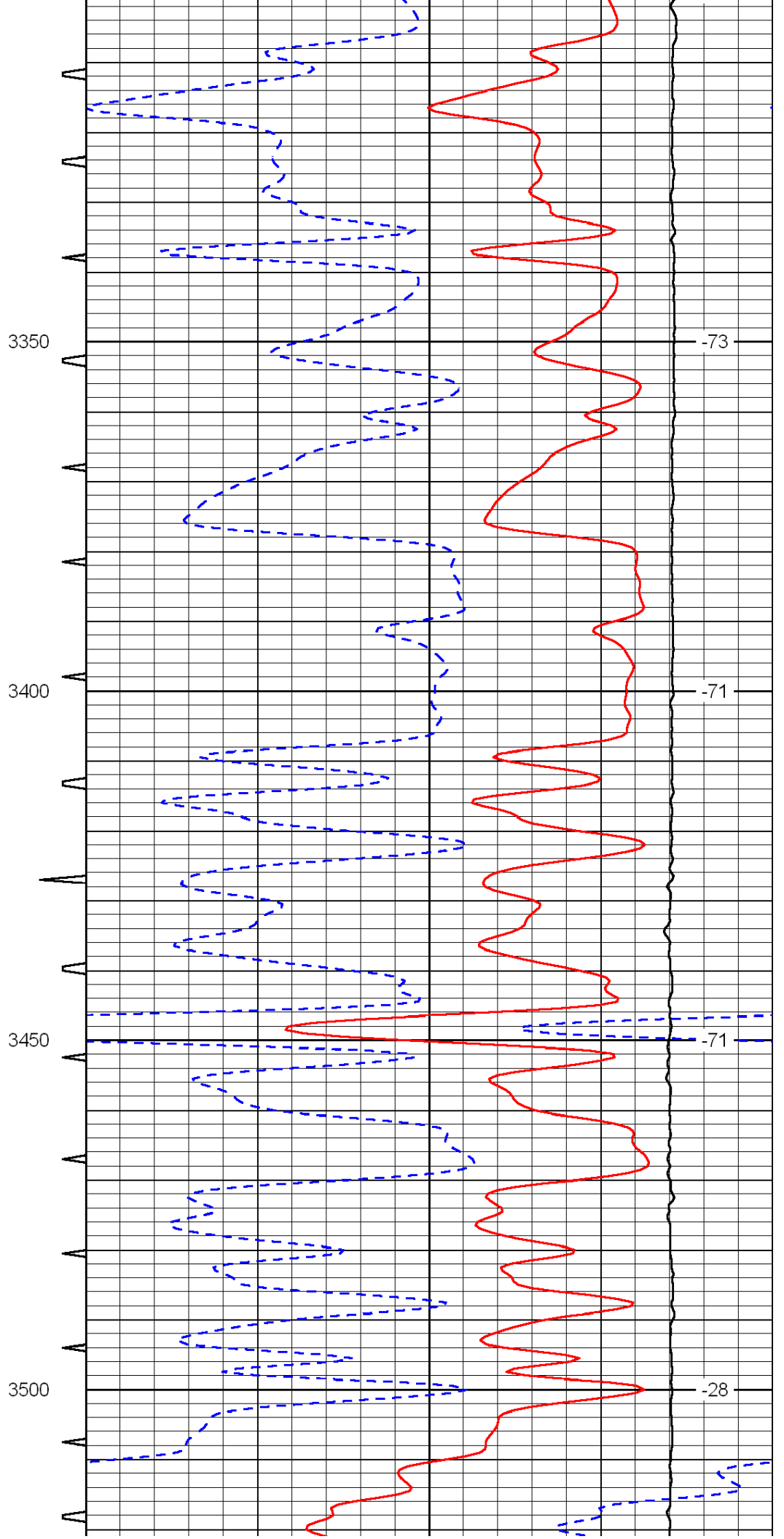
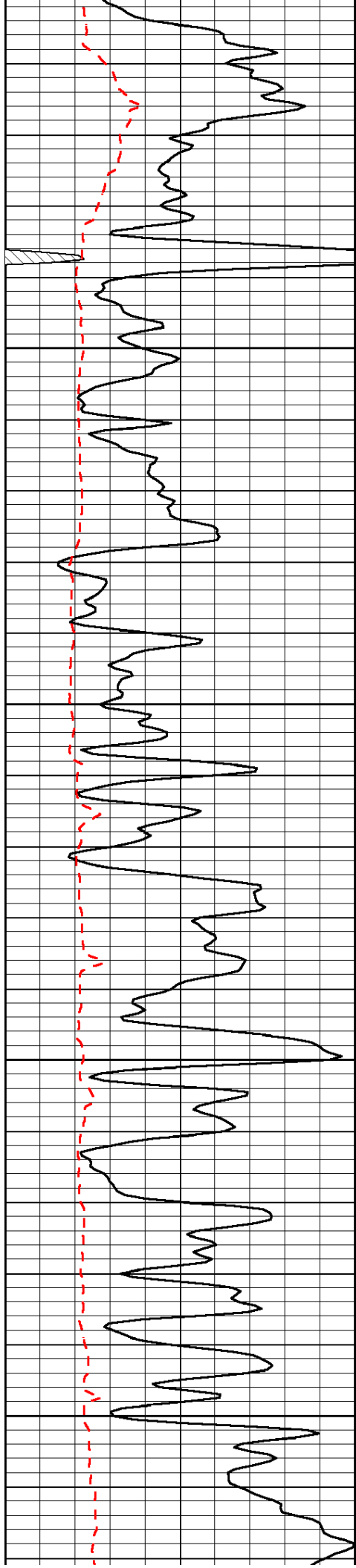


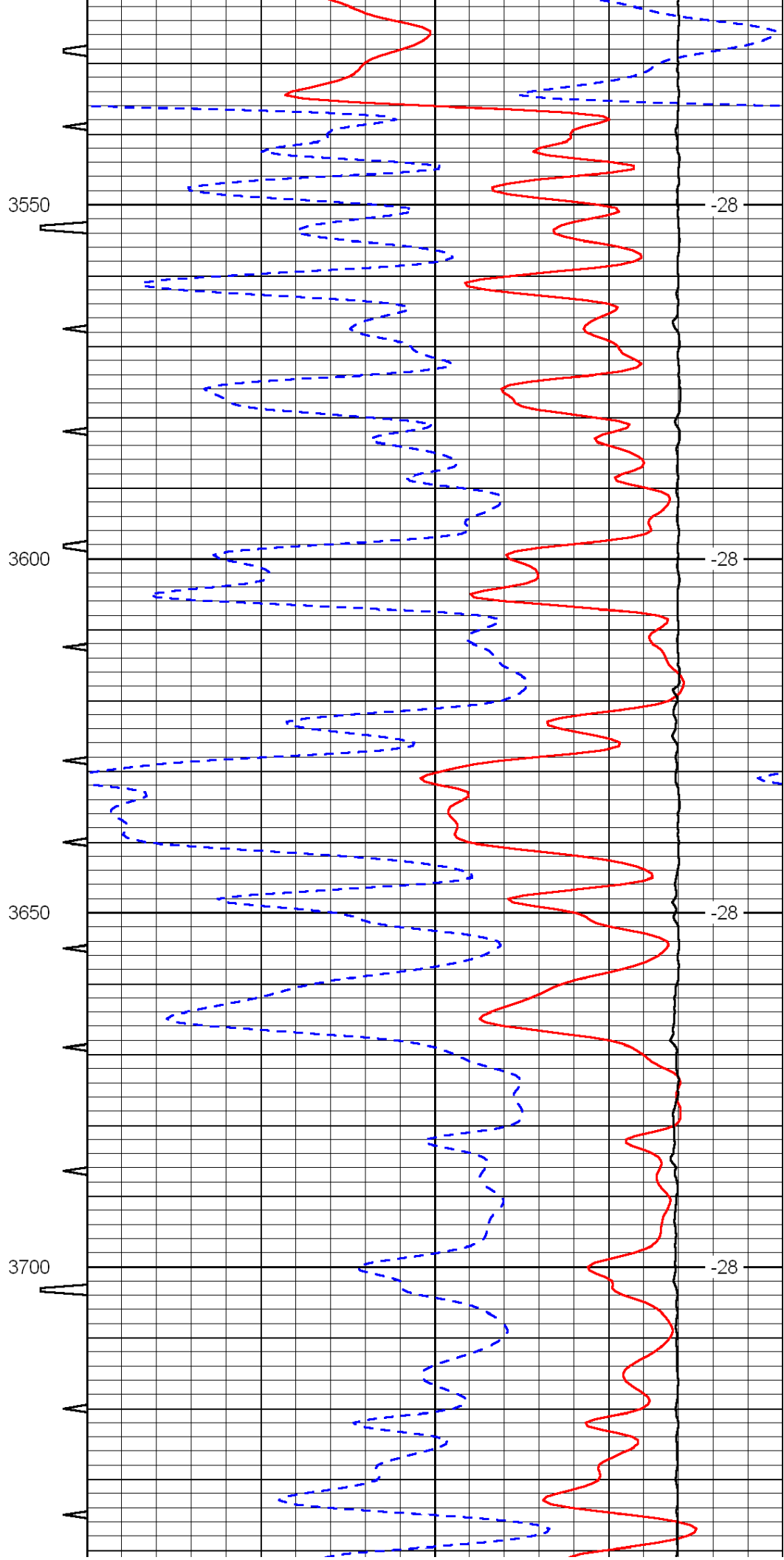
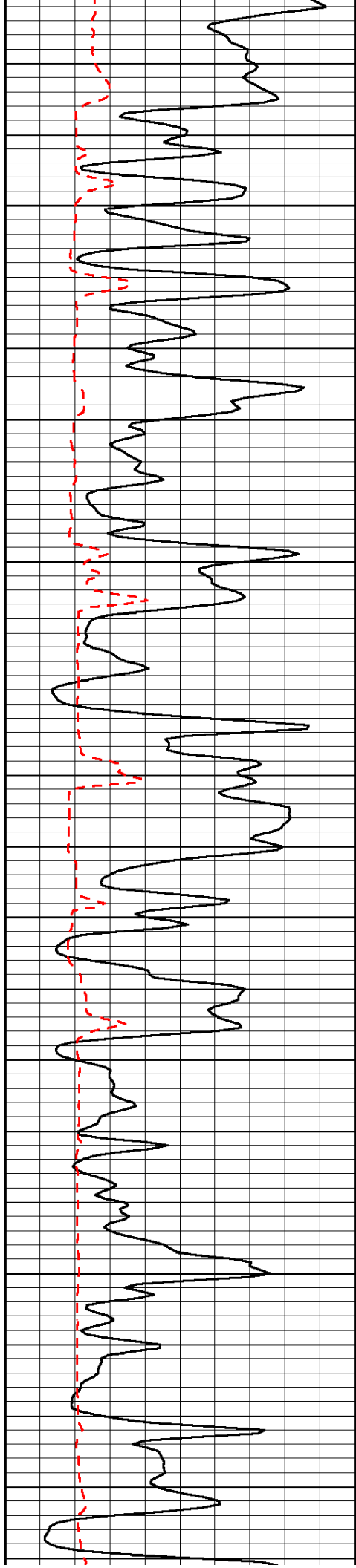


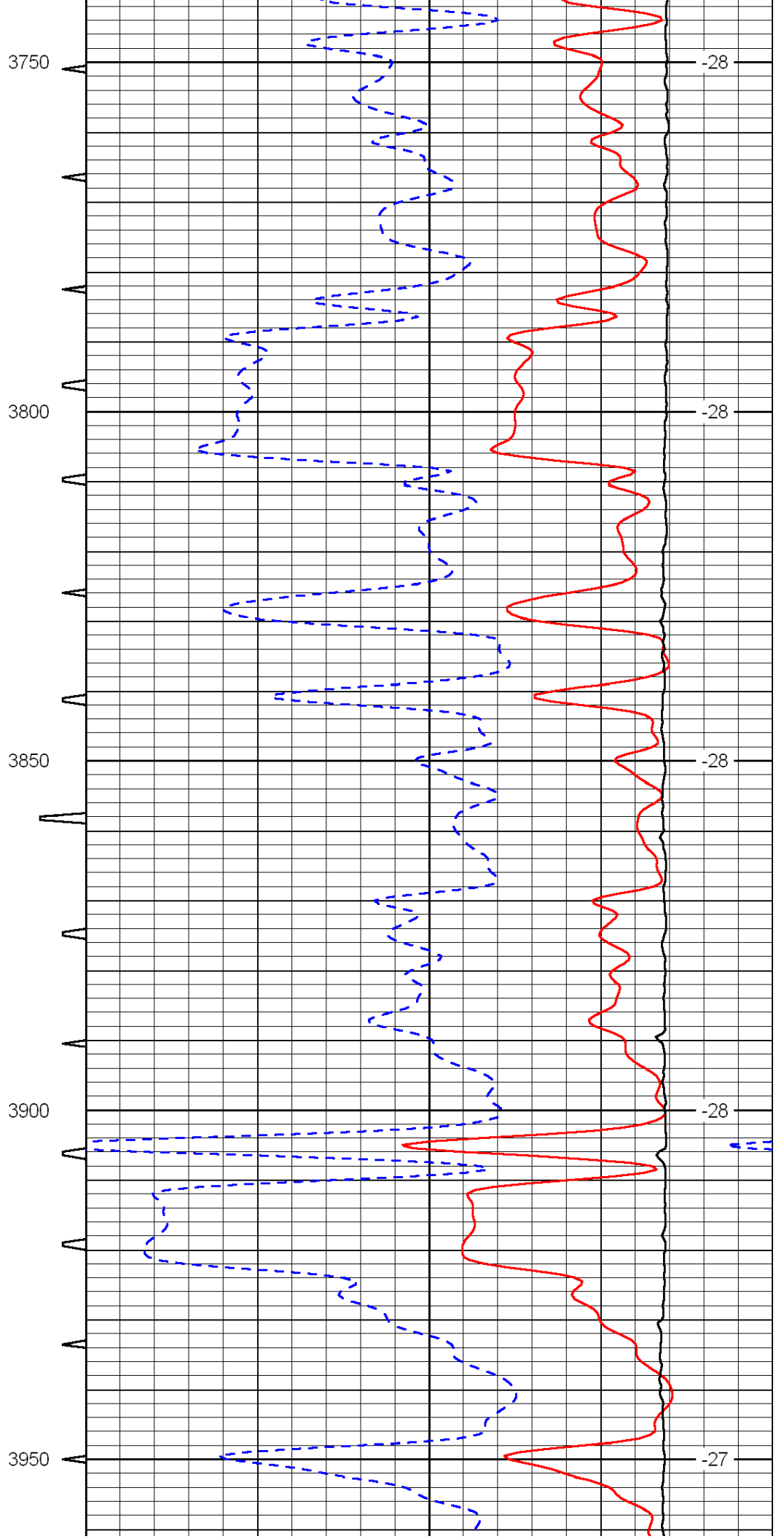
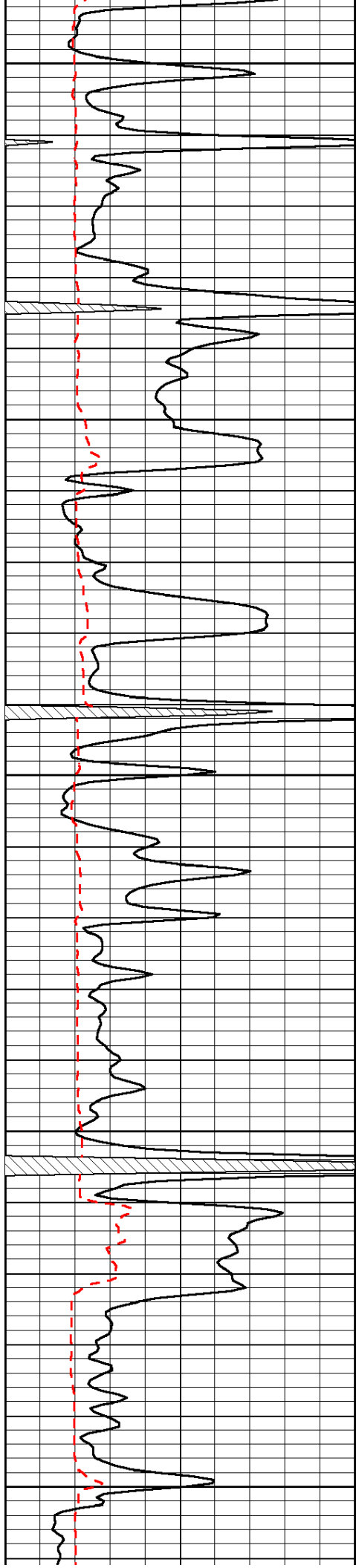


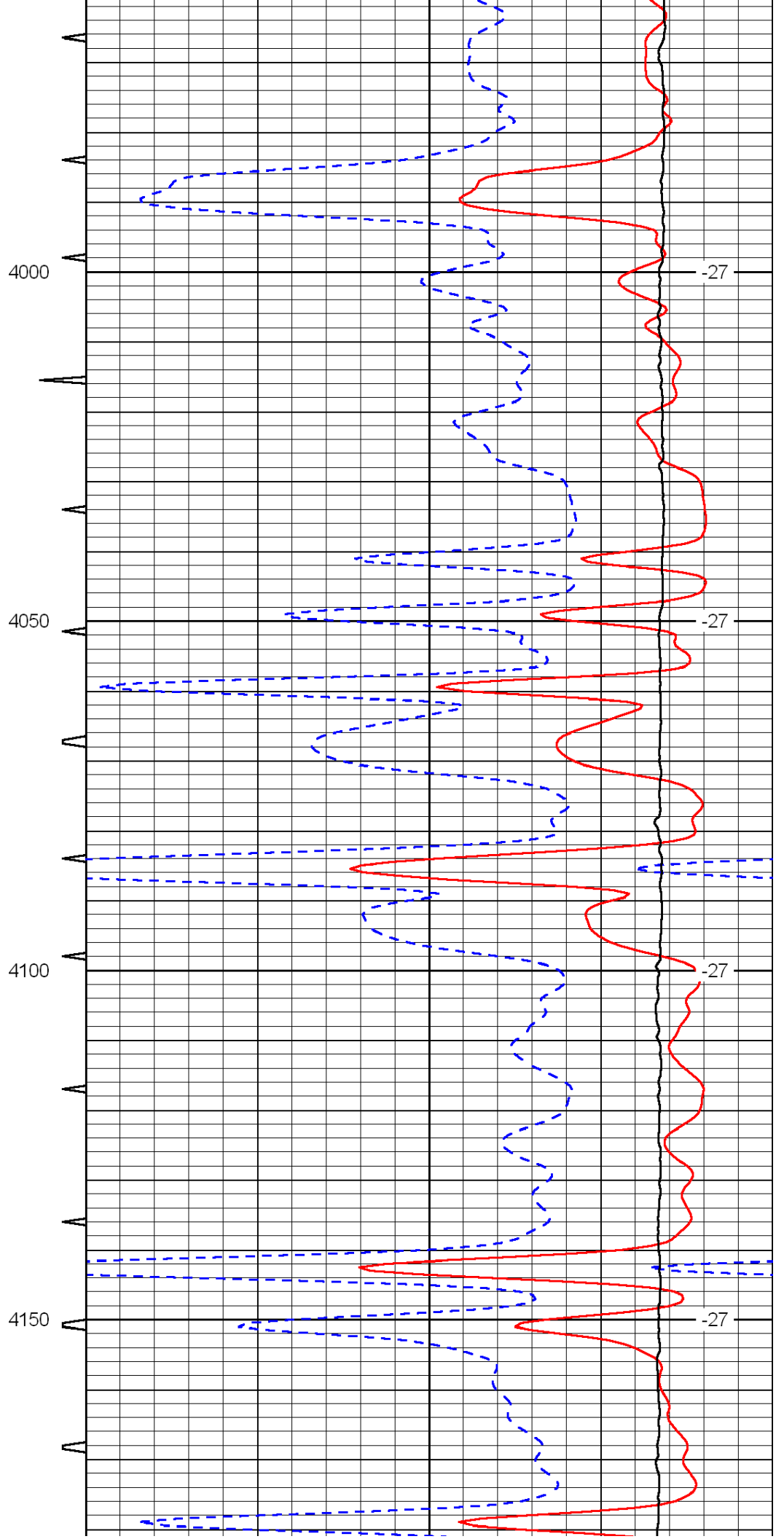
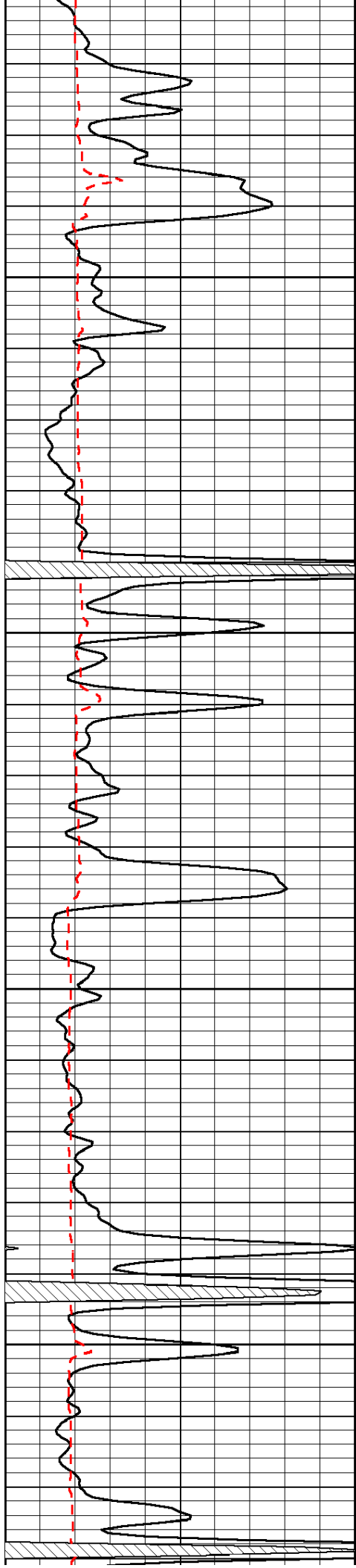


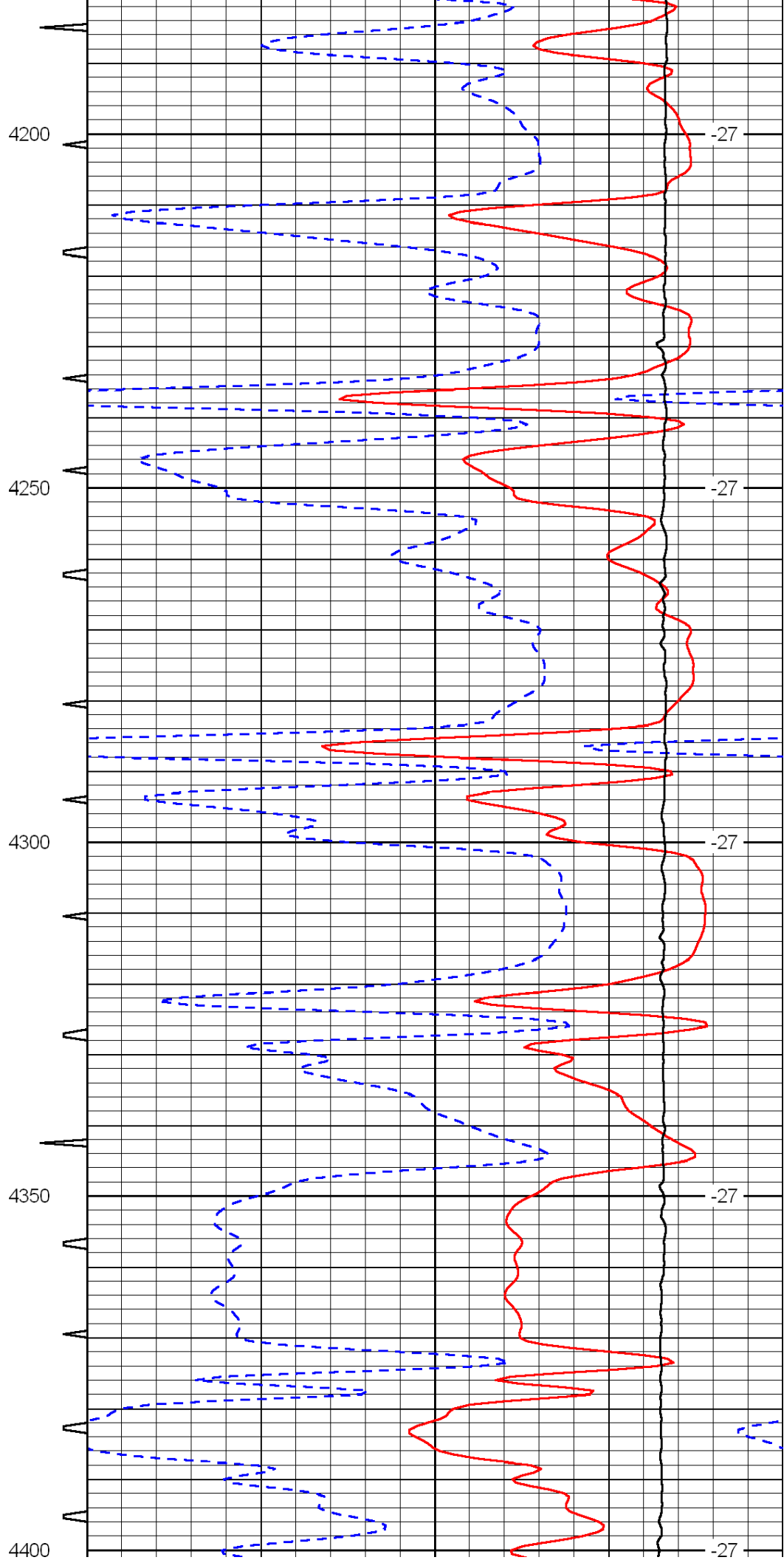
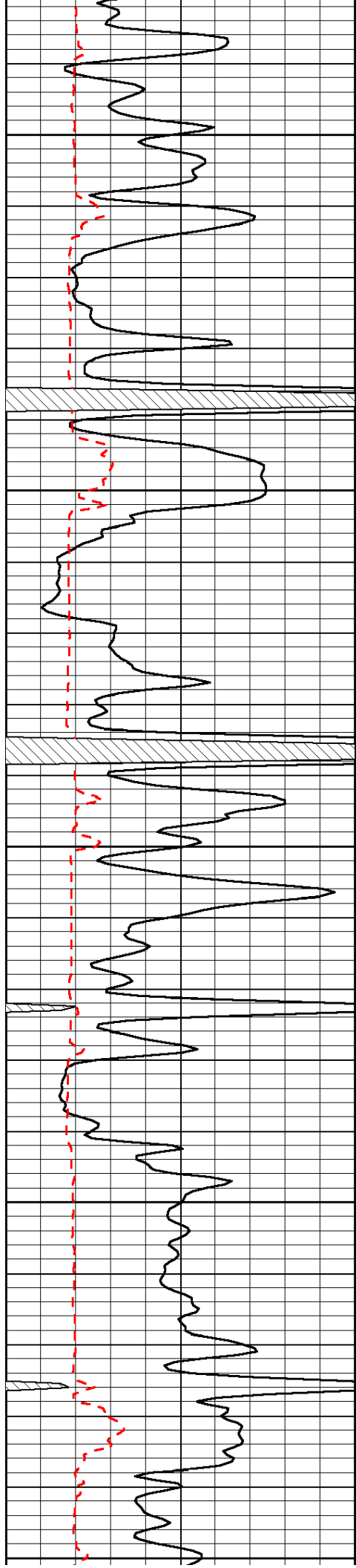


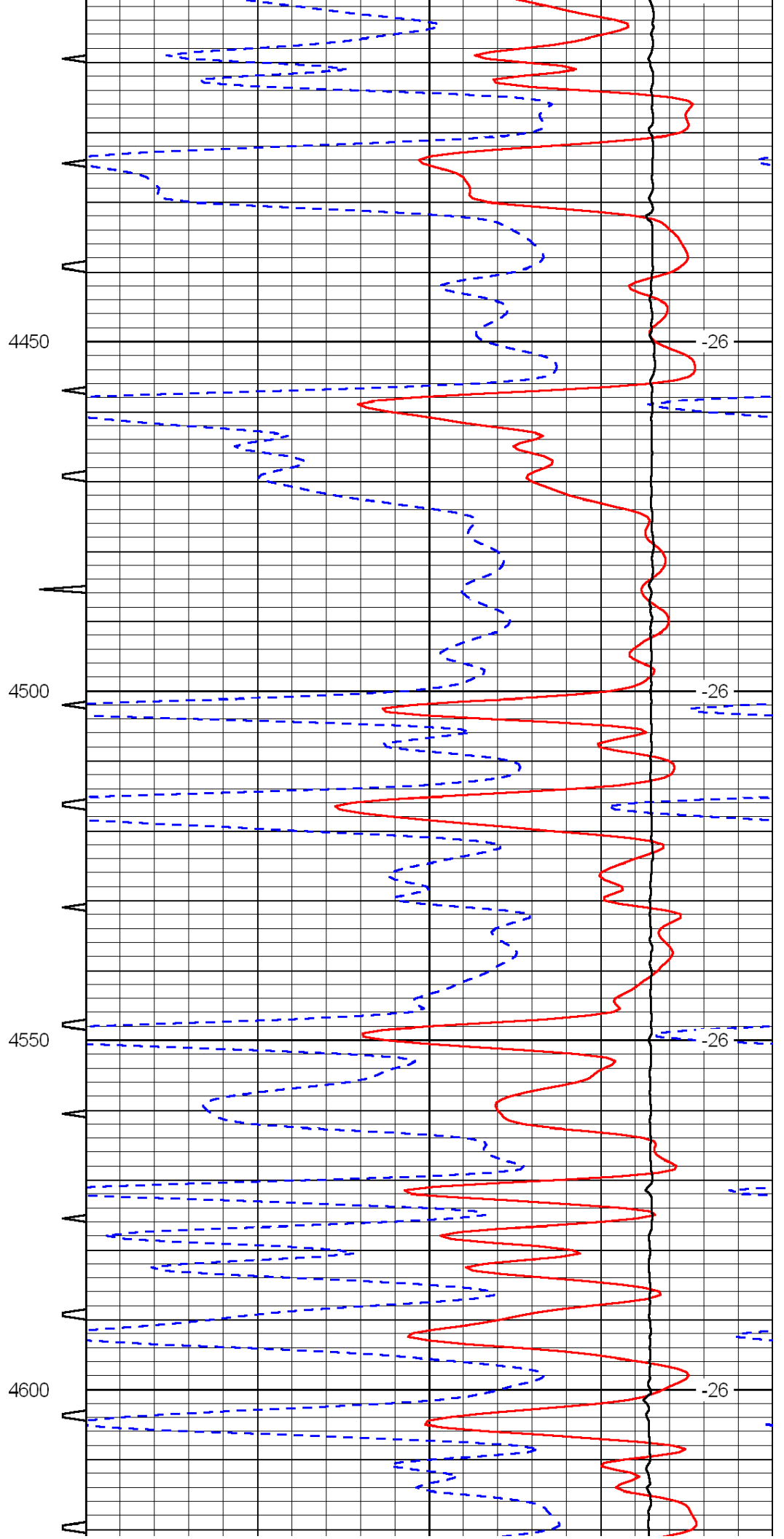
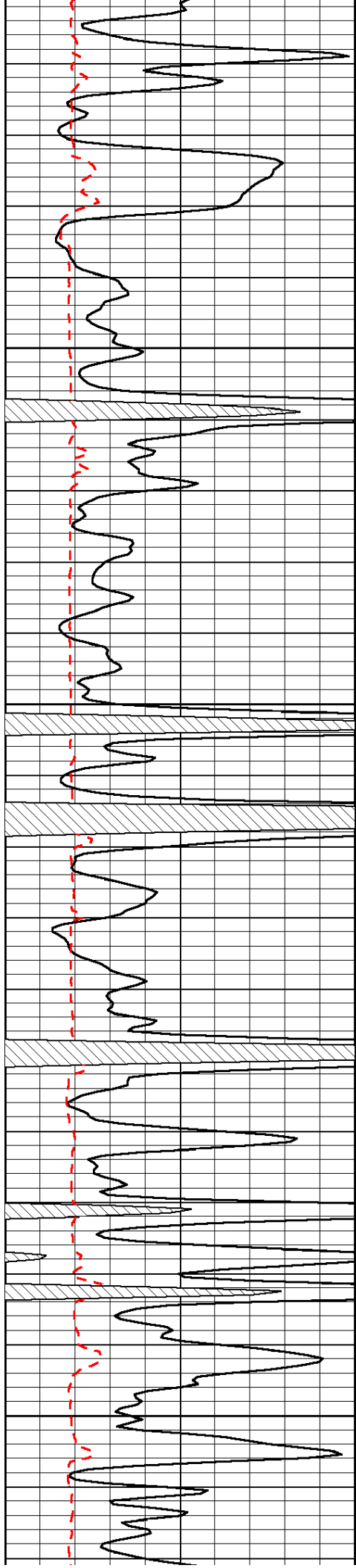


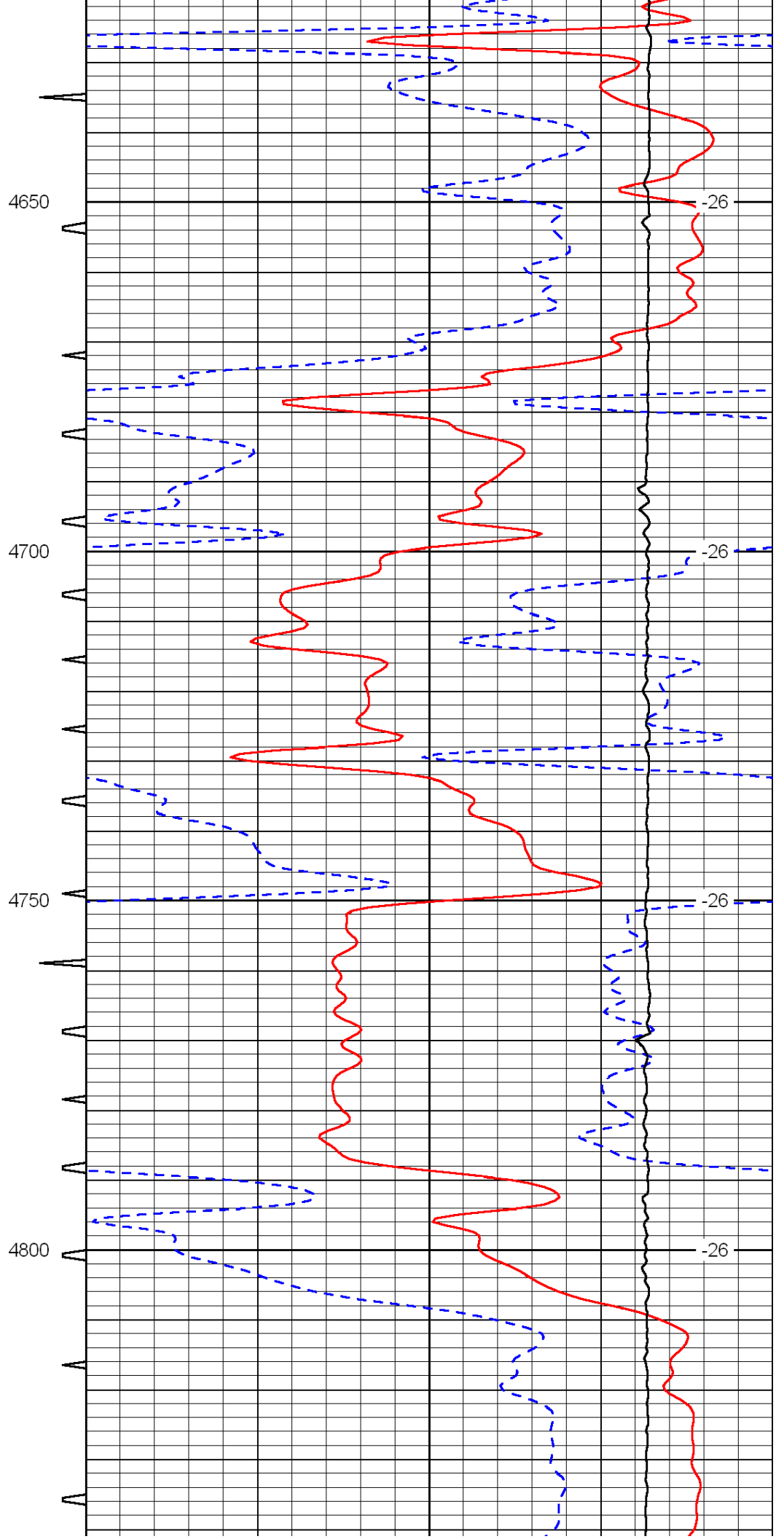
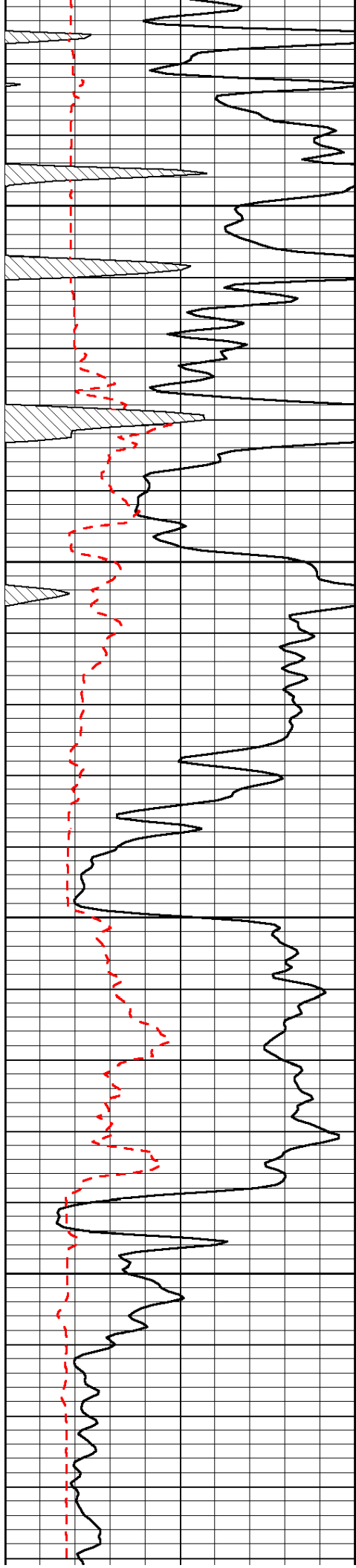


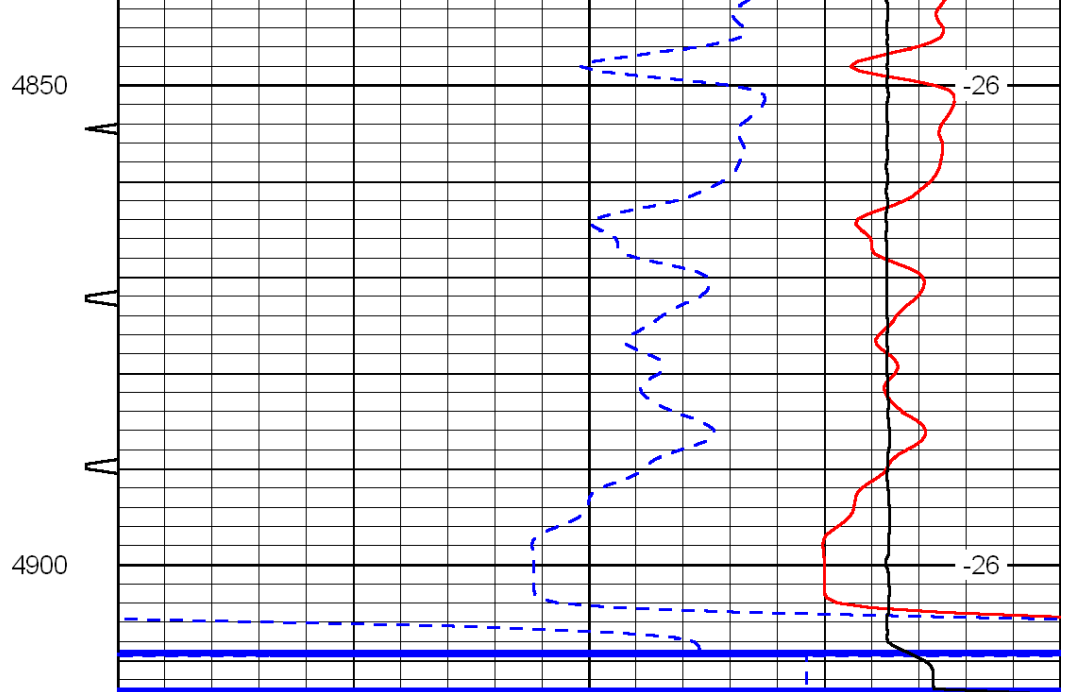
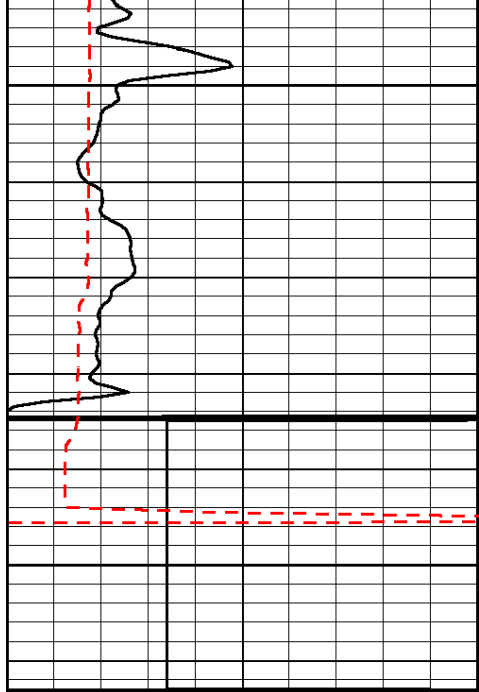












0	Gamma Ray	150	Sonic Int	140	Delta Time (usec/ft)	40
150	Gamma Ray	300	5	0	SPOR	-10
6	Caliper (GAPI)	16		15000	LTEN (lb)	0
LSPD						