



DIGITAL LOG (785) 625-3858

Dual Induction Log

API No.	15-109-20,891-00-00	
Company	Russell Oil, Inc.	
Well	Tucker "A" No 1-29	
Field	Wildcat	
County	Logan	State
Location	1420' FSL & 1540' FWL	
Sec: 29	Twp: 15S	Rge: 34W
Other Services	CNL/CDL MEL/BHCS	

Permanent Datum	Ground Level	Elevation 3049
Log Measured From	Kelly Bushing	8 Ft. Above Perm. Datum
Drilling Measured From	Kelly Bushing	
Date	05/03/2010	
Run Number	One	
Depth Driller	4900	
Depth Logger	4908	
Bottom Logged Interval	4907	
Top Log Interval	00	
Casing Driller	8.625 @ 266	
Casing Logger	265	
Bit Size	7.875	
Type Fluid in Hole	Chemical	
Salinity, ppm CL	7.700	
Density / Viscosity	9.1	53
pH / Fluid Loss	10.0	8.8
Source of Sample	Flowline	
Rm @ Meas. Temp	.85 @ 68	
Rmf @ Meas. Temp	.64 @ 68	
Rmc @ Meas. Temp	1.15 @ 68	
Source of Rmf / Rmc	Charts	
Rm @ BHT	.46 @ 127	
Operating Rig Time	5 Hours	
Max Rec. Temp. F	127	
Equipment Number	17	
Location	Hays	
Recorded By	Mike Garrison	
Witnessed By	Steven D Angle	

<<< Fold Here >>>

All interpretations are opinions based on inferences from electrical or other measurements and we cannot and do not guarantee the accuracy or correctness of any interpretation, and we shall not, except in the case of gross or willful negligence on our part, be liable or responsible for any loss, costs, damages, or expenses incurred or sustained by anyone resulting from any interpretation made by any of our officers, agents or employees. These interpretations are also subject to our general terms and conditions set out in our current Price Schedule.

Comments

Thank you for using Log-Tech, Inc.
(785) 625-3858

West of Pence to 25 Rd, North past Bison Rd (1/4) East Into

Database File: c:\warrior\data\russell_tucker a no 1-29\russell.db
 Dataset Pathname: dil/russtck
 Presentation Format: dil2in
 Dataset Creation: Mon May 03 05:08:17 2010
 Charted by: Depth in Feet scaled 1:600

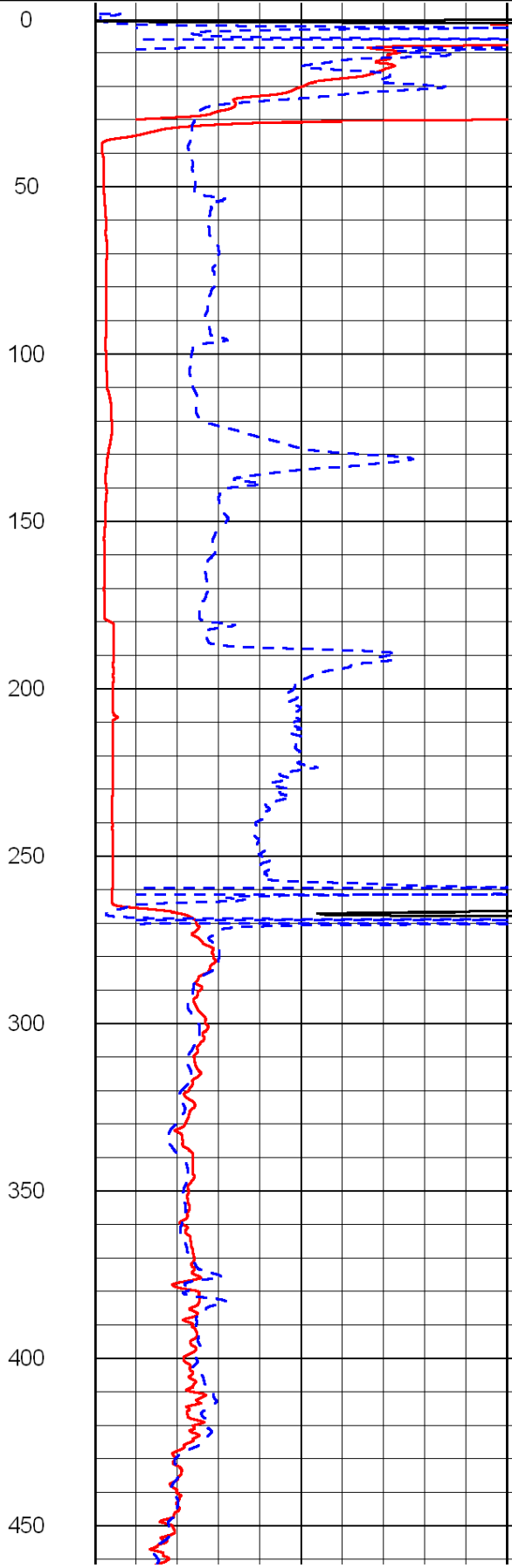
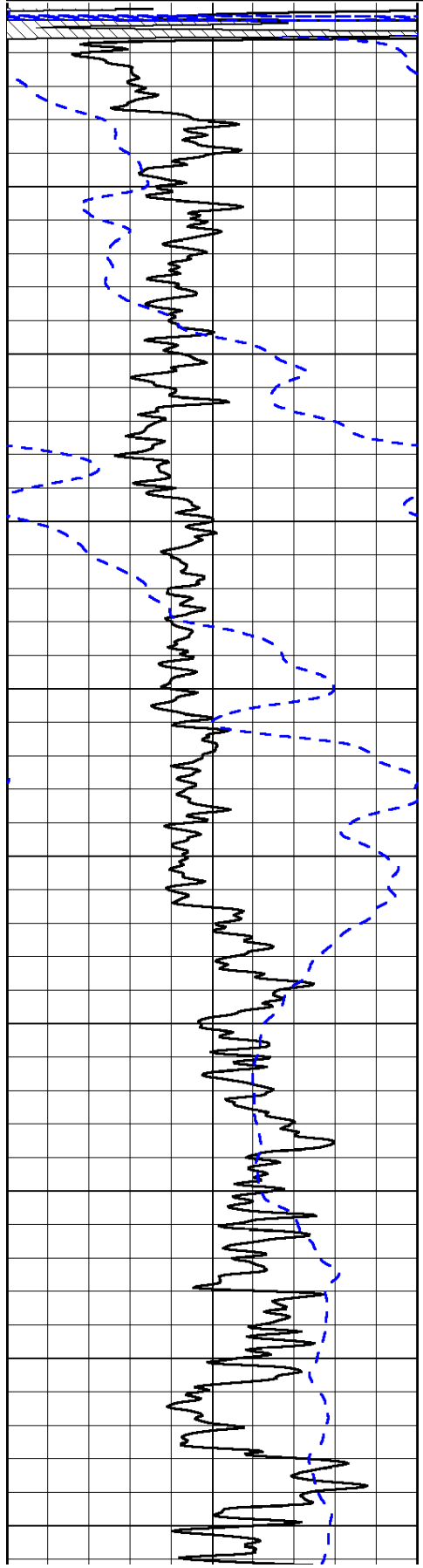
0	Gamma Ray	150
-200	SP (mV)	0

0	Shallow Resistivity	50
0	Deep Resistivity	50

LSPD

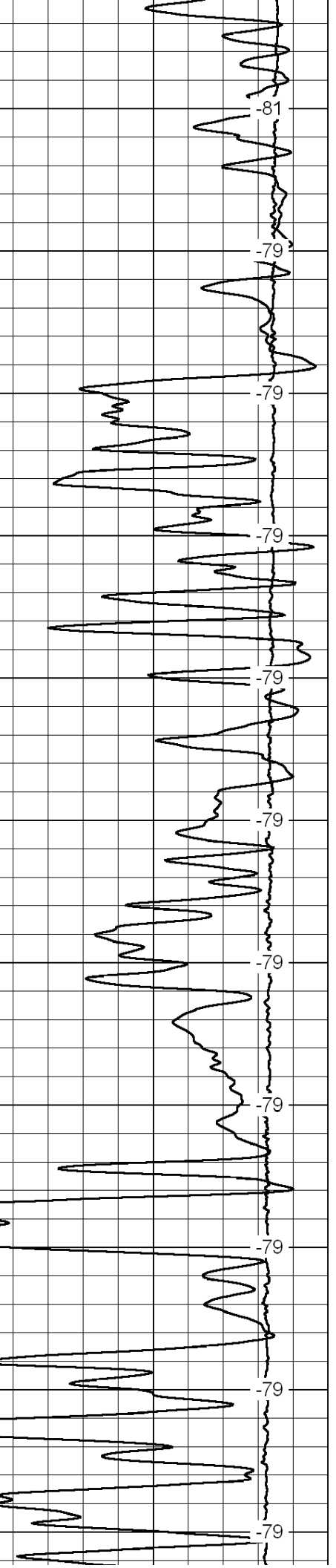
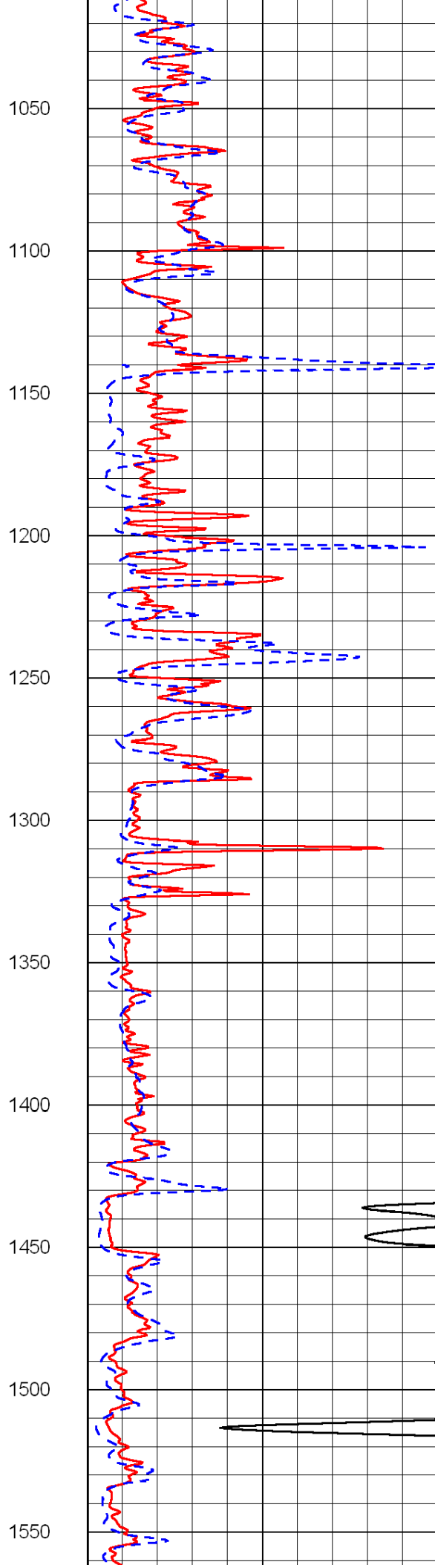
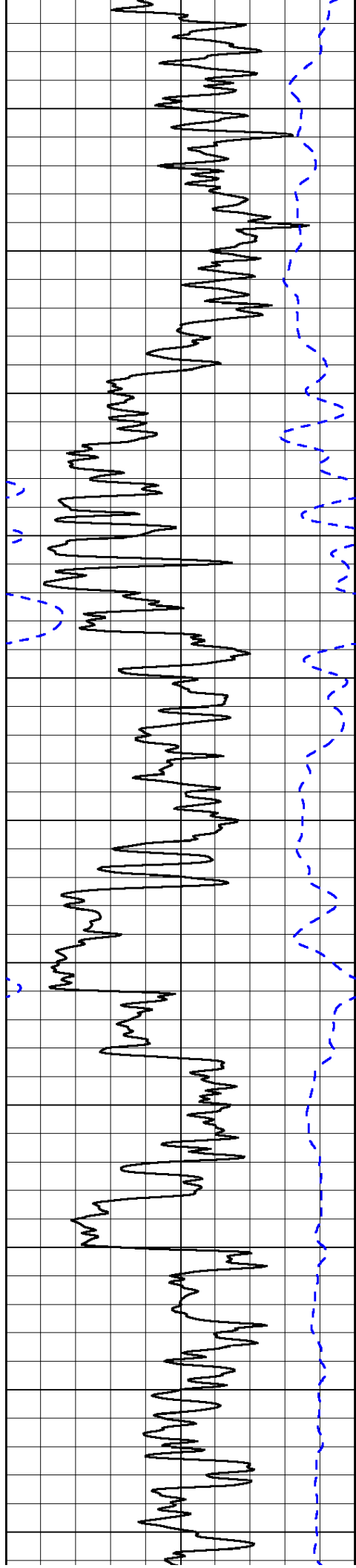
1000	Conductivity	0
15000	Line Tension	0

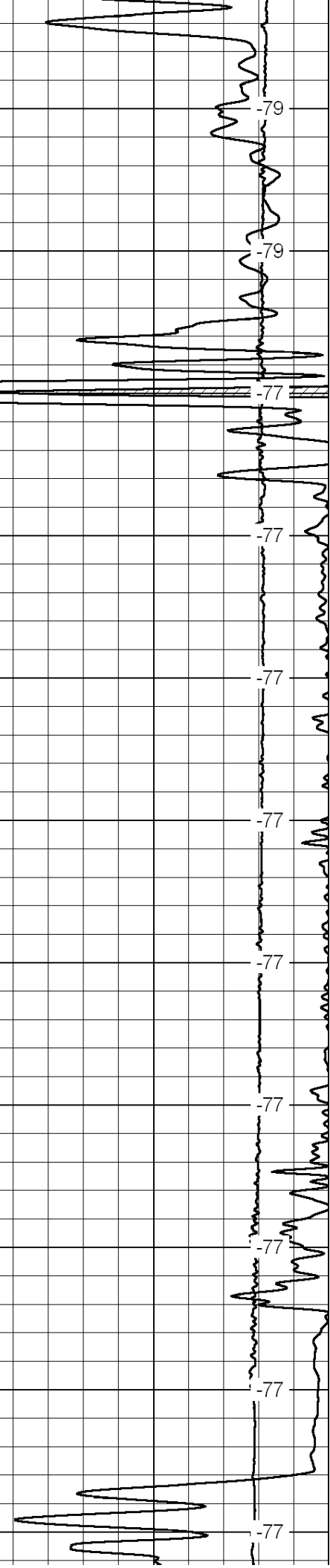
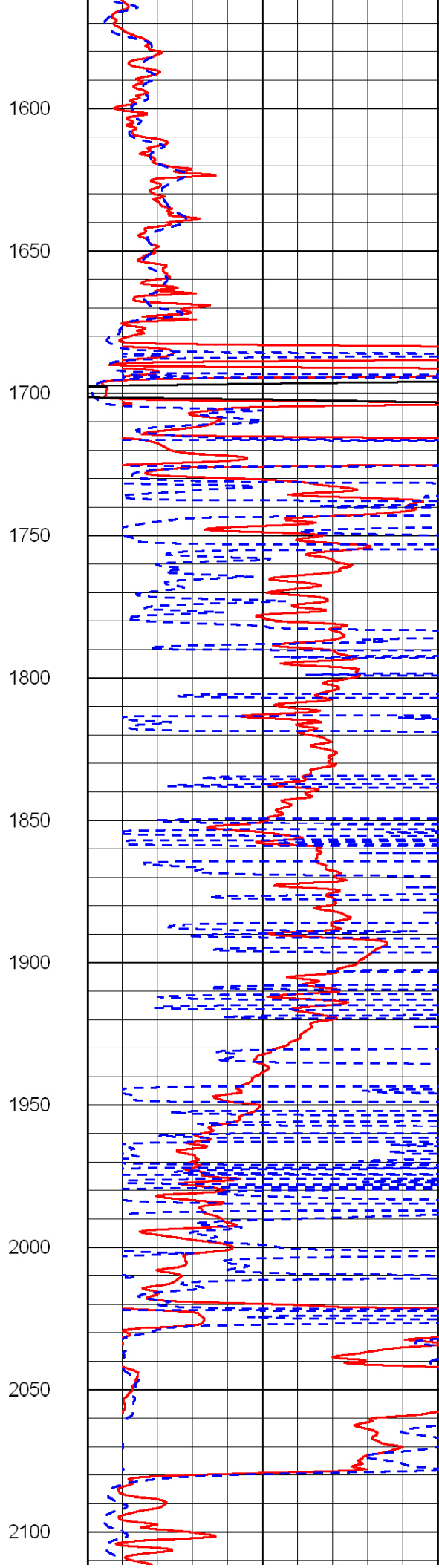
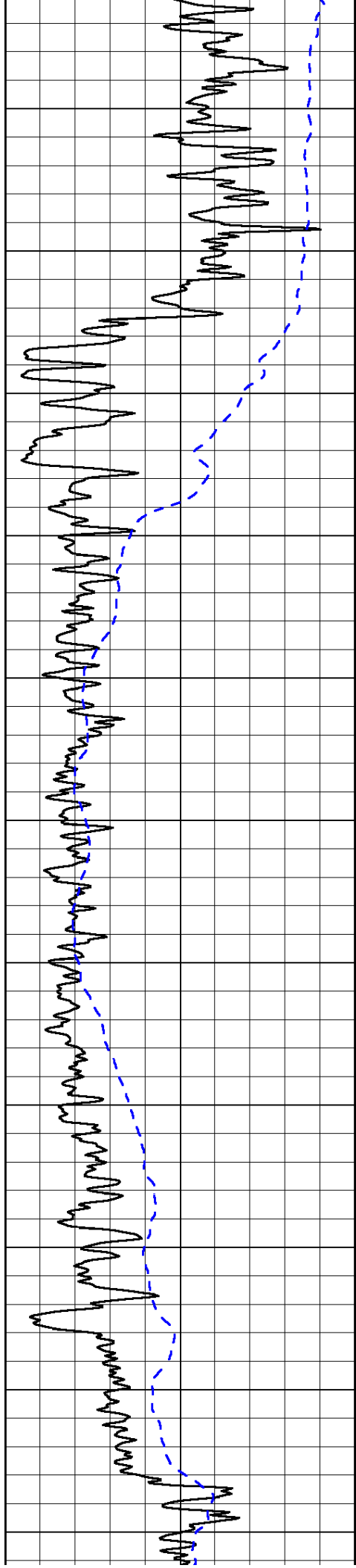
50	Shallow Resistivity	500
50	Deep Resistivity	500

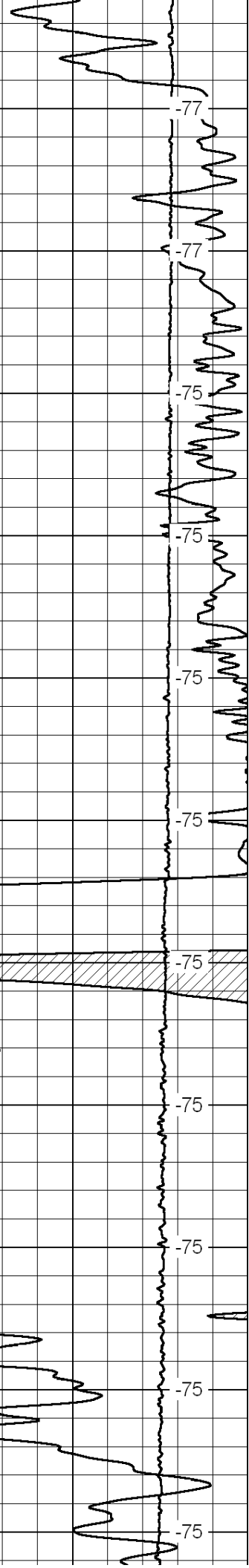
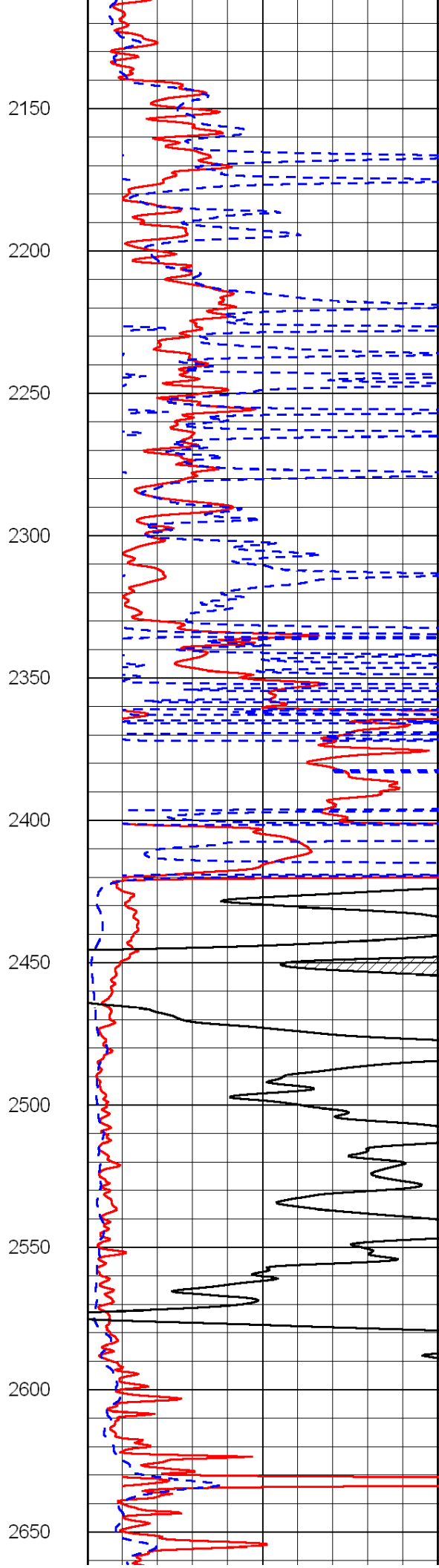
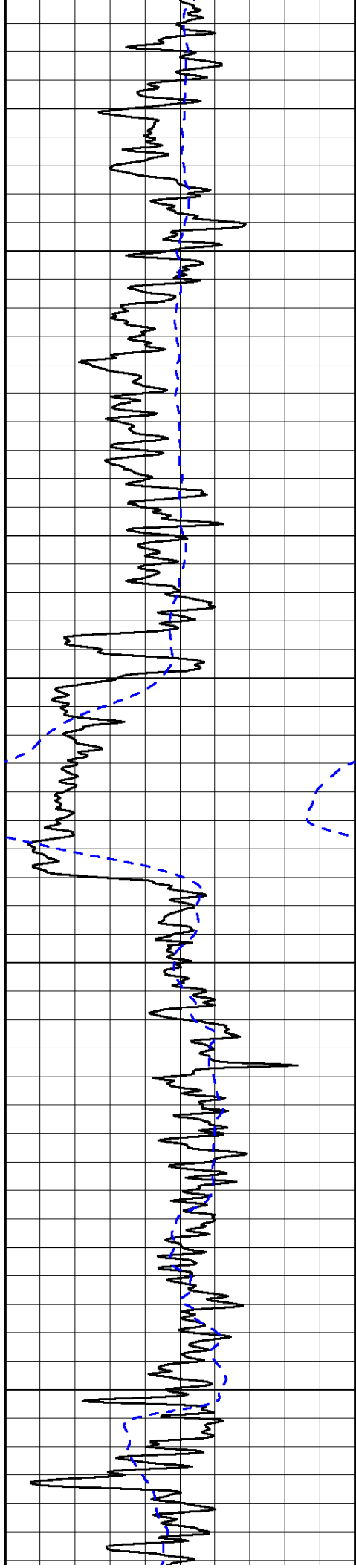


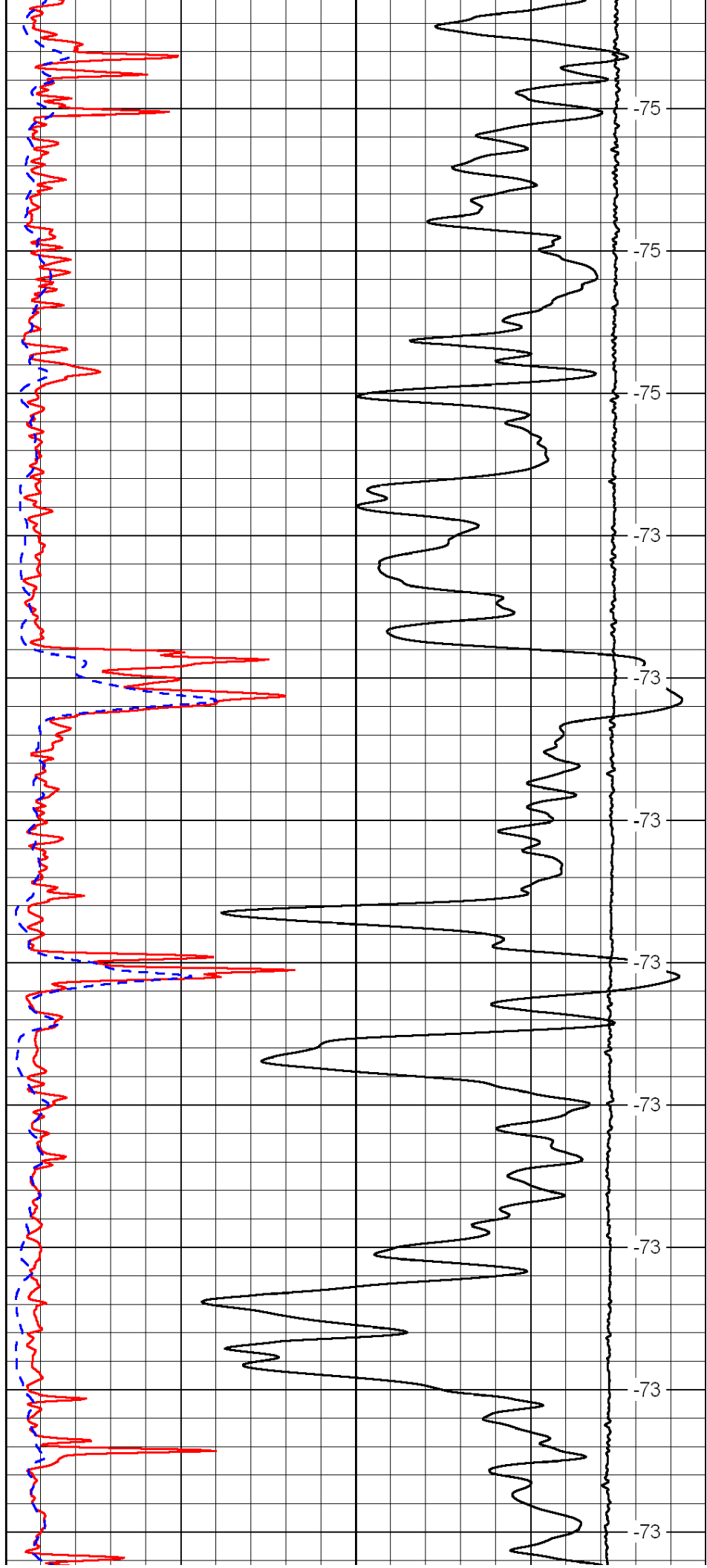
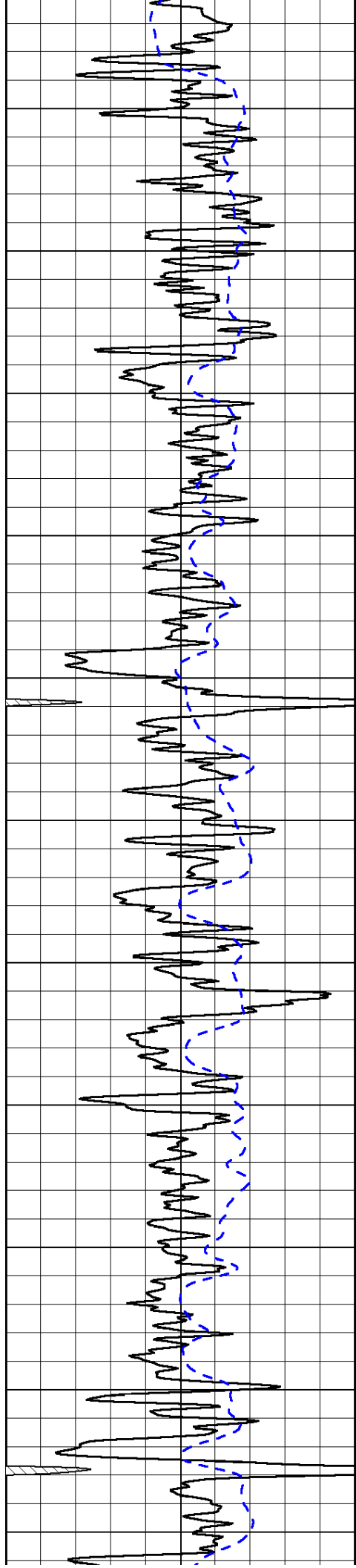
0
50
100
150
200
250
300
350
400
450

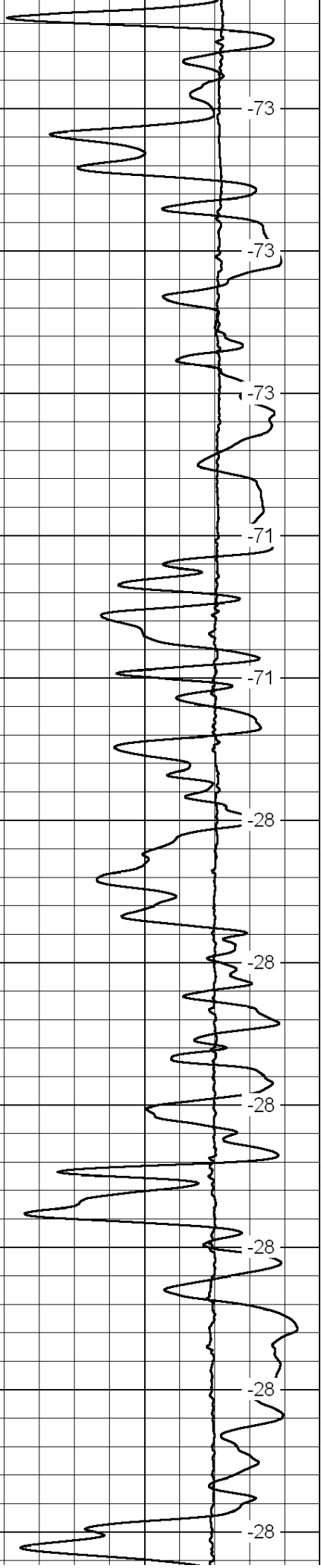
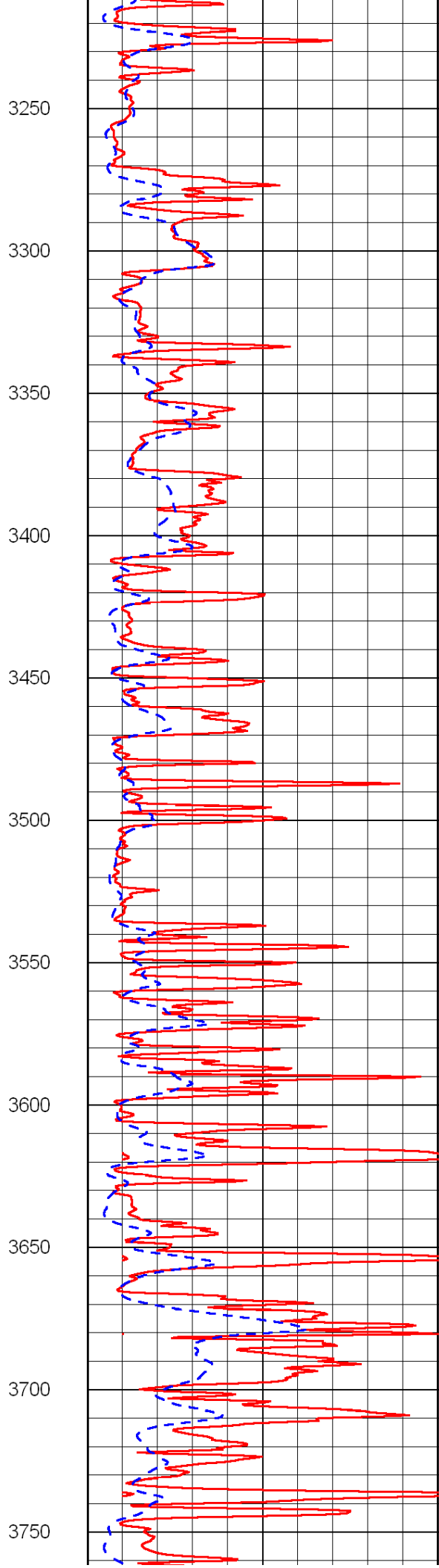
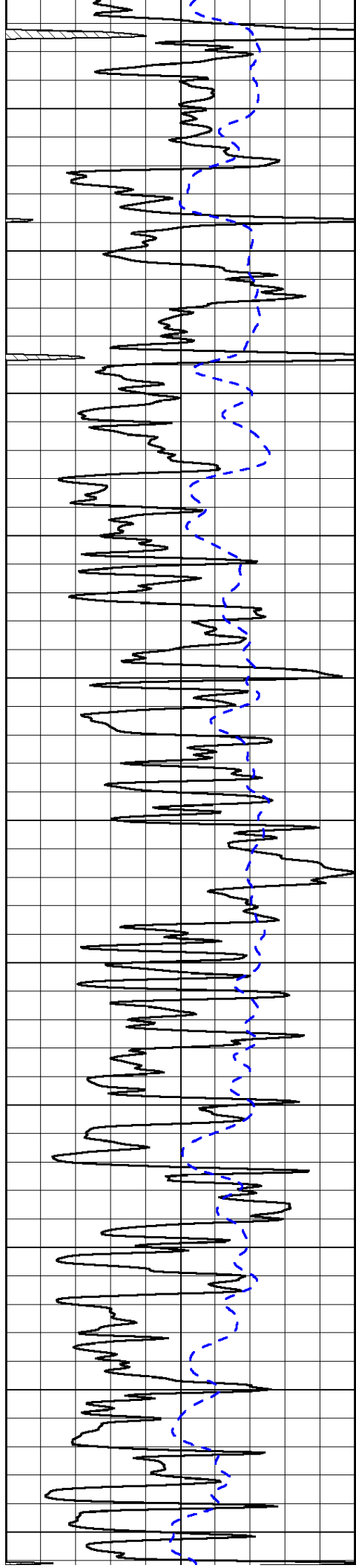
-0
-53
-93
-93
-42
-41
-42
-42
-83
-83

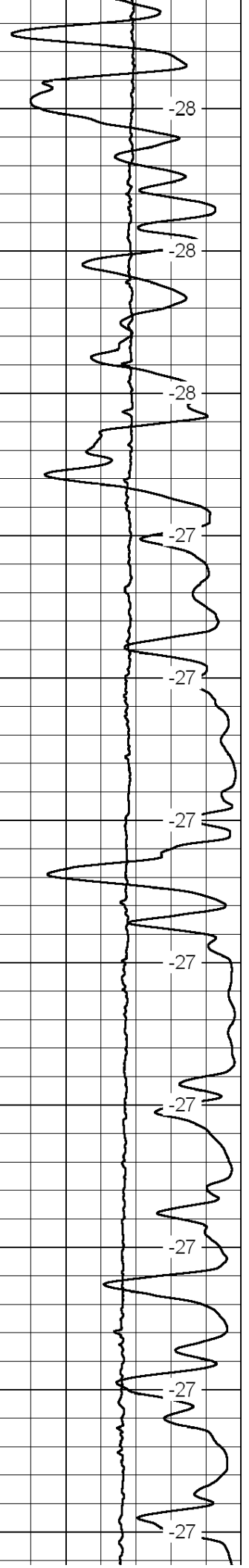
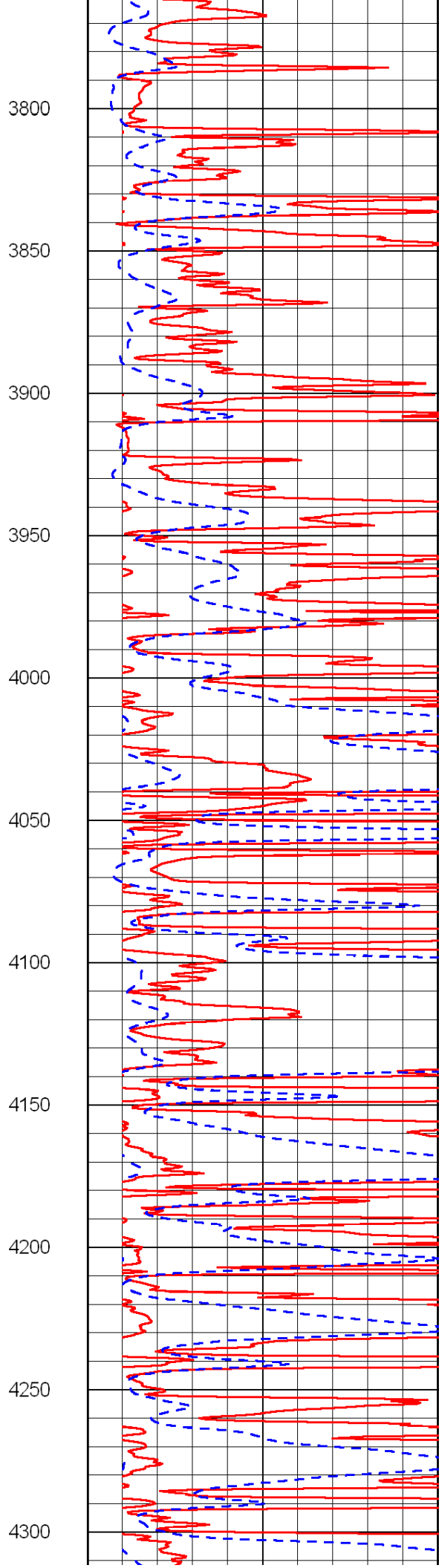
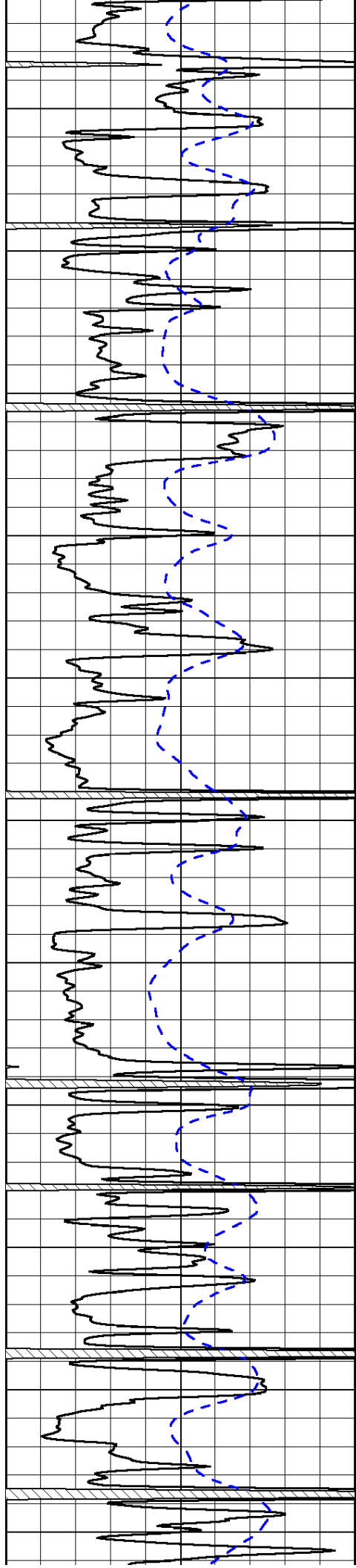


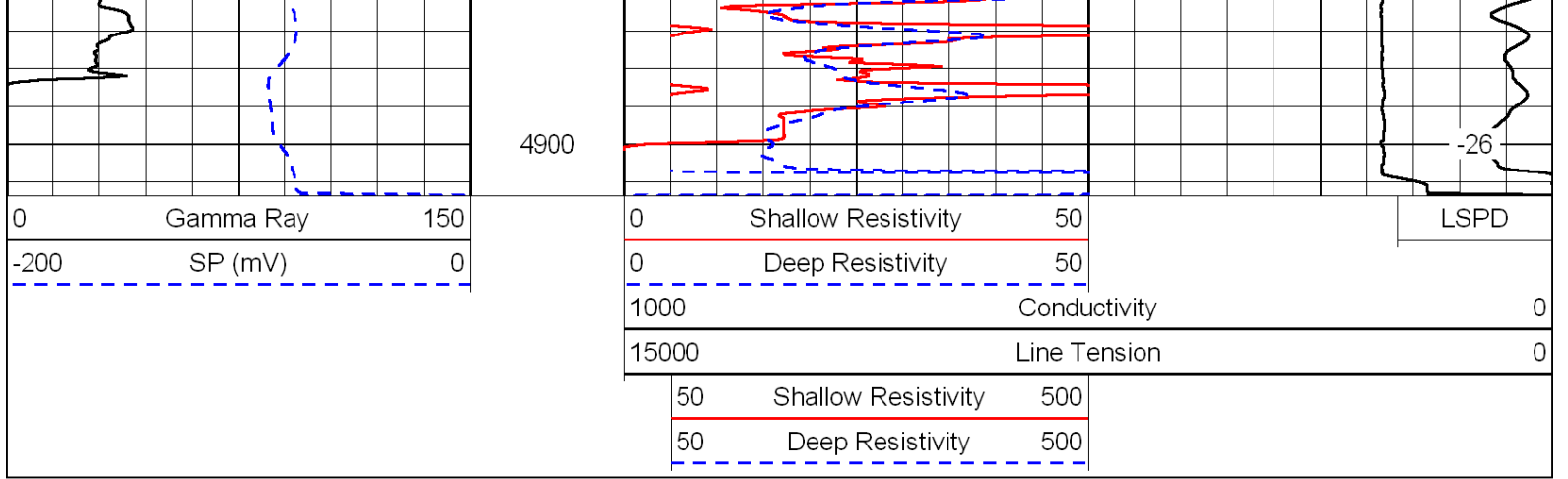




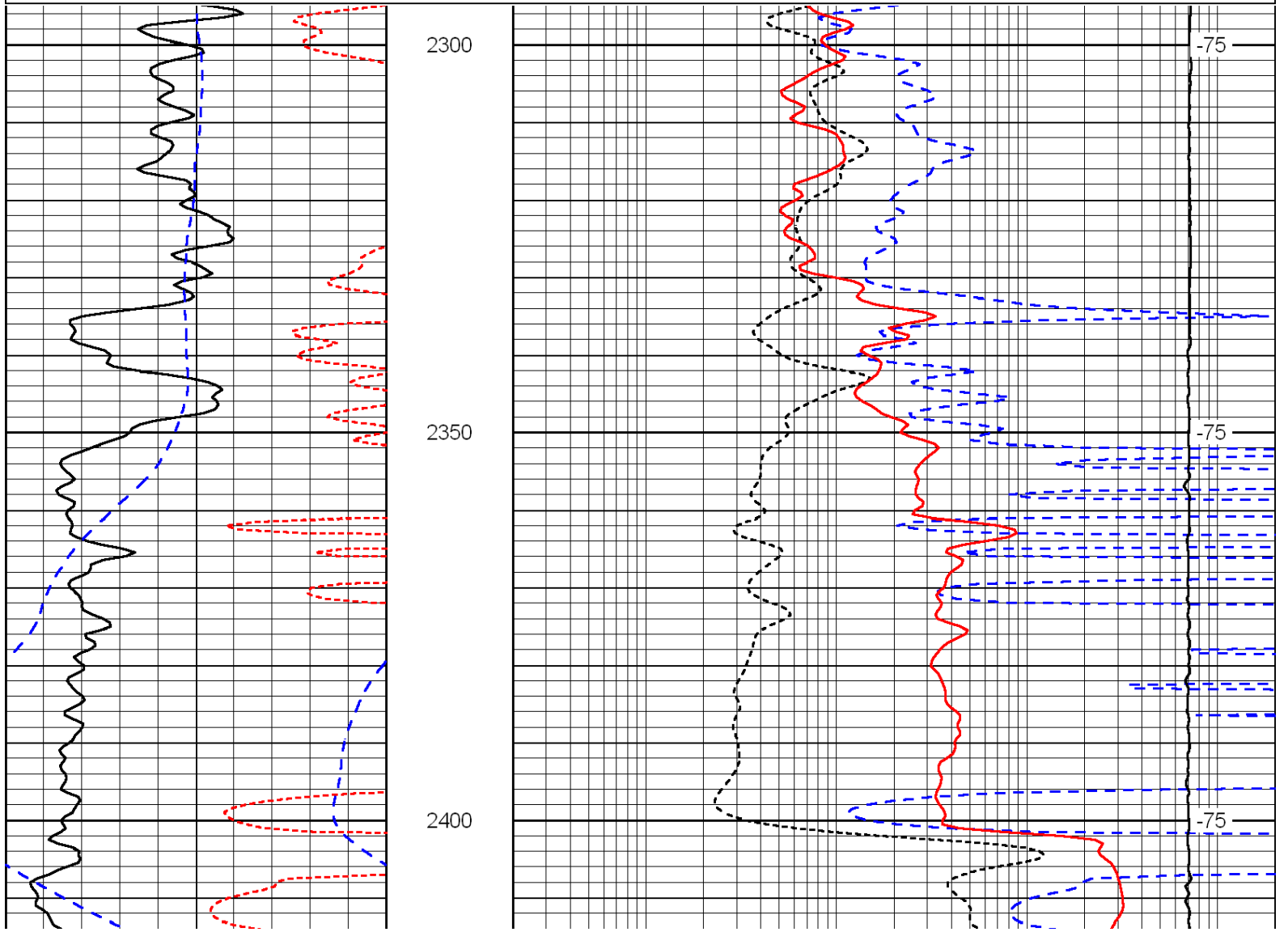
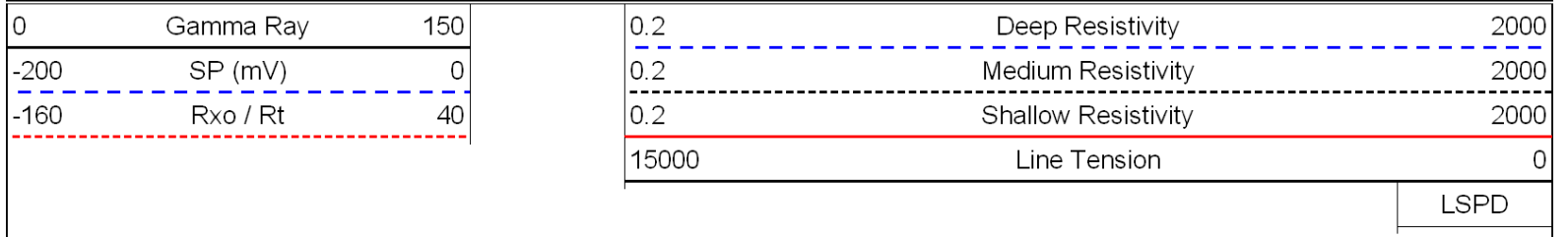


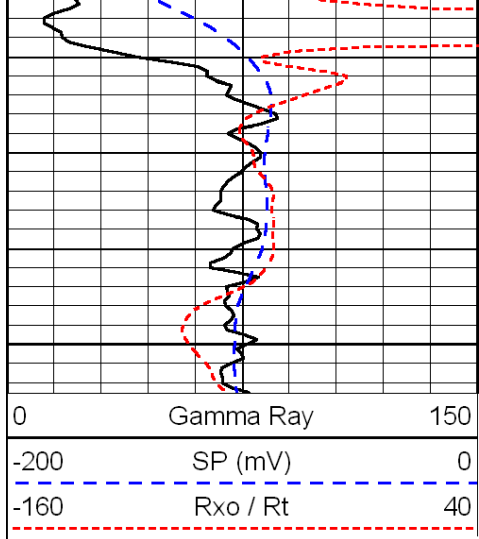




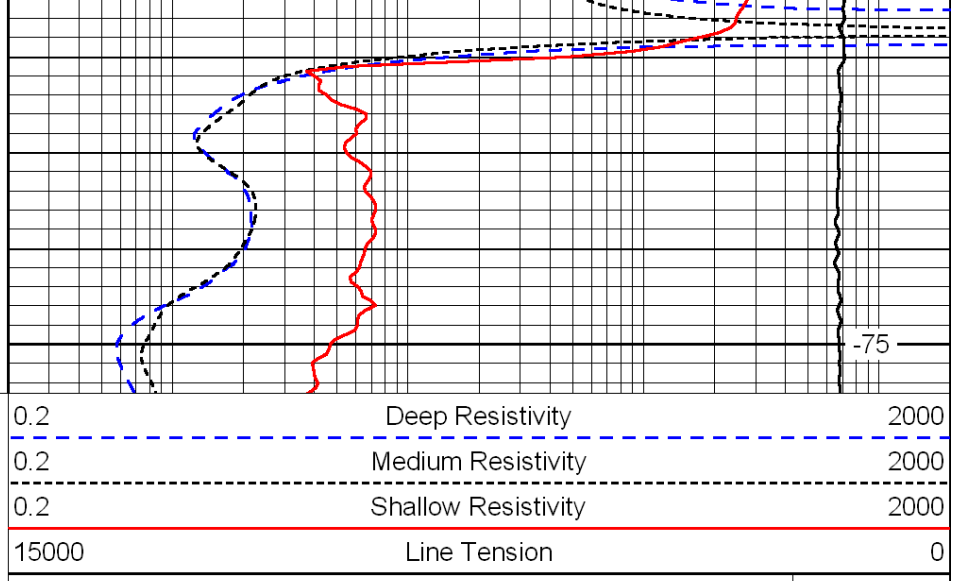


Database File: c:\warrior\data\russell_tucker a no 1-29\russell.db
 Dataset Pathname: dil/russtck
 Presentation Format: dil
 Dataset Creation: Mon May 03 05:08:17 2010
 Charted by: Depth in Feet scaled 1:240





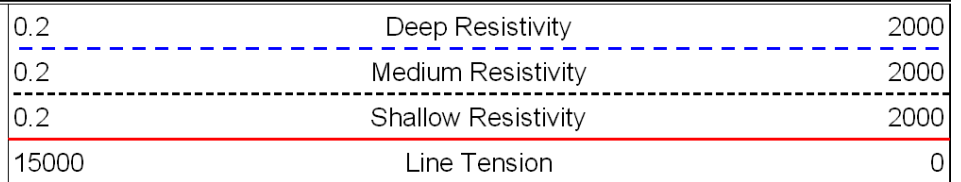
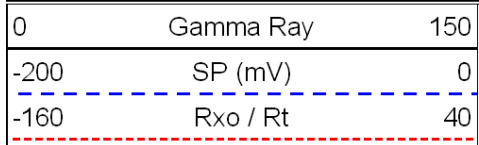
2450



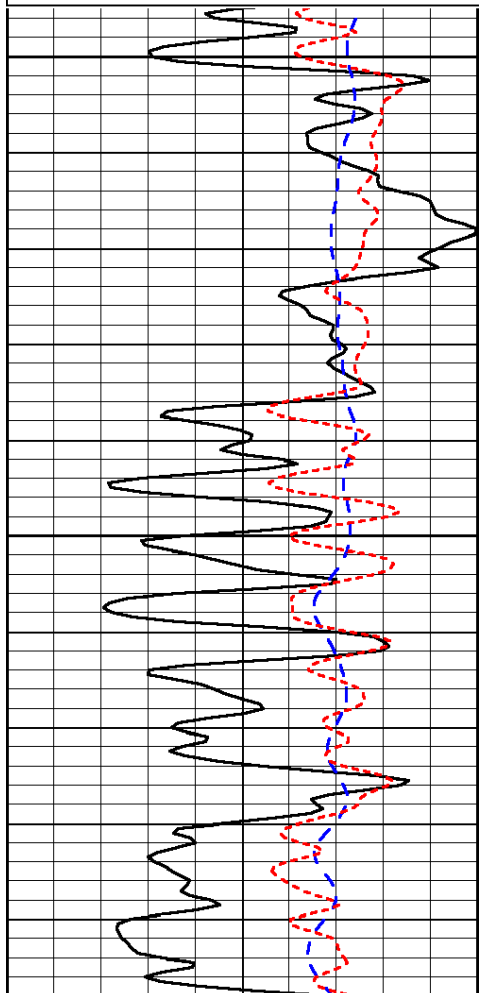
-75

LSPD

Database File: c:\warrior\data\russell_tucker a no 1-29\russell.db
 Dataset Pathname: dil/russtck
 Presentation Format: dil
 Dataset Creation: Mon May 03 05:08:17 2010
 Charted by: Depth in Feet scaled 1:240

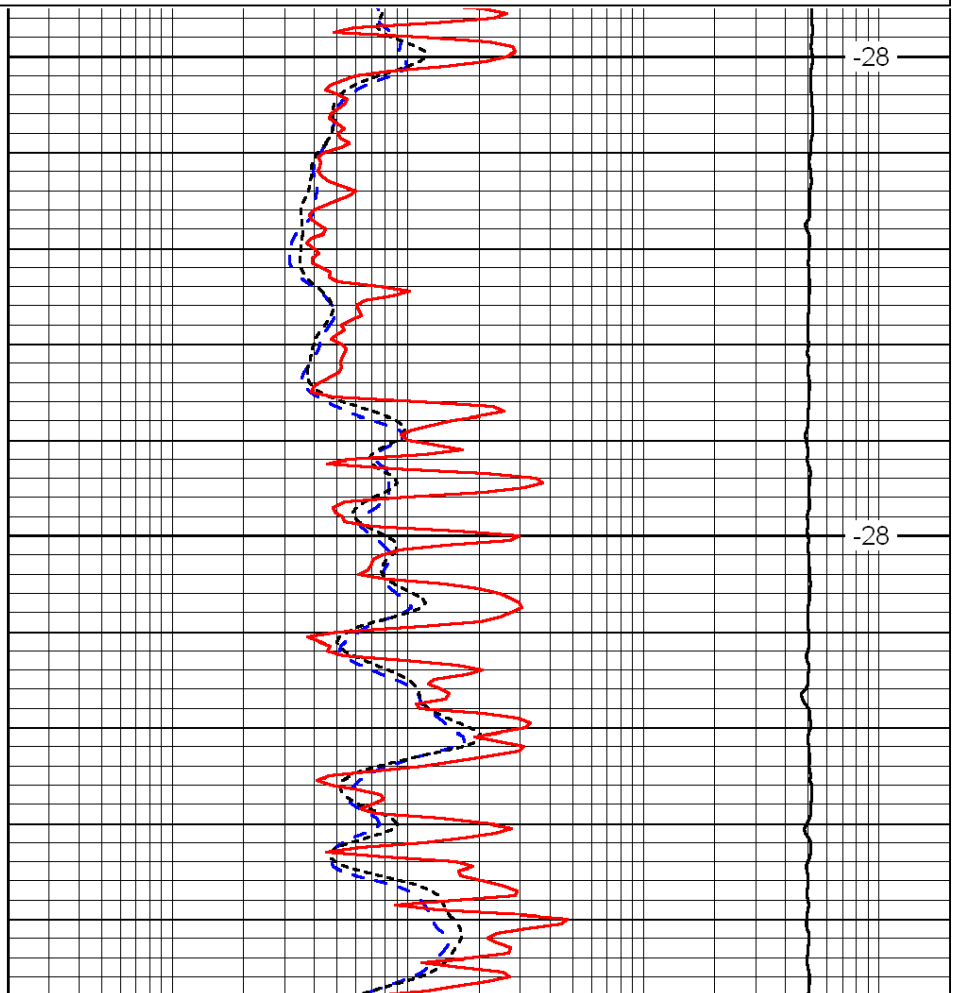


LSPD



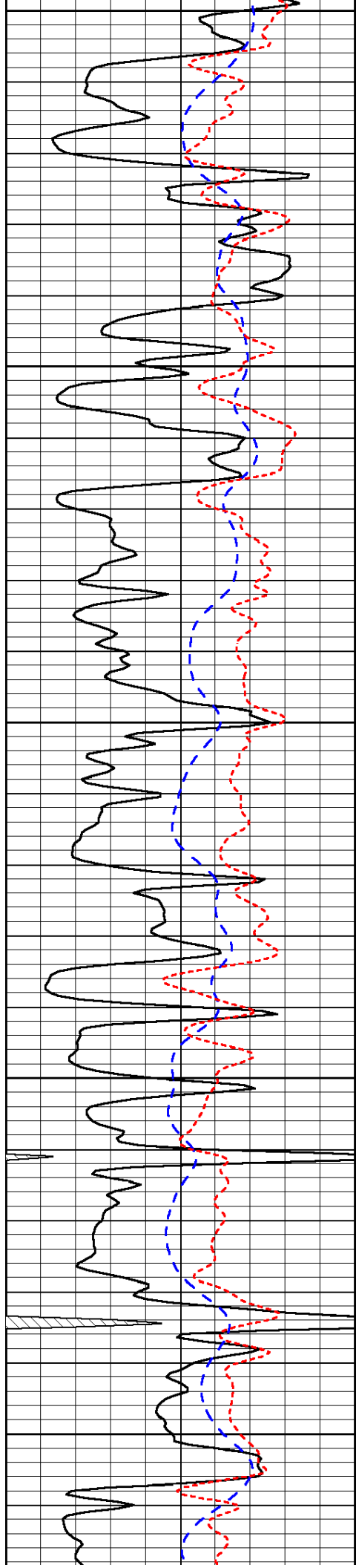
3500

3550



-28

-28



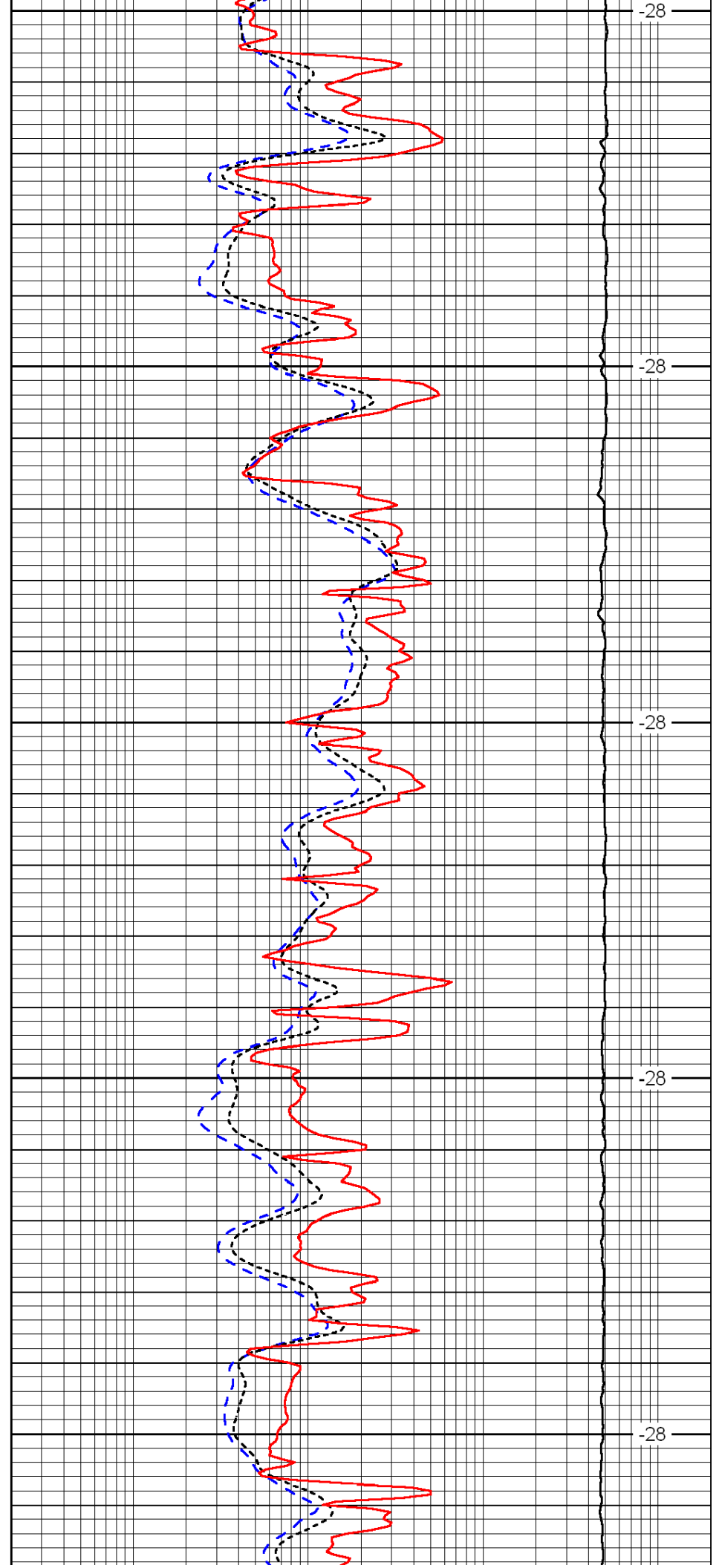
3600

3650

3700

3750

3800



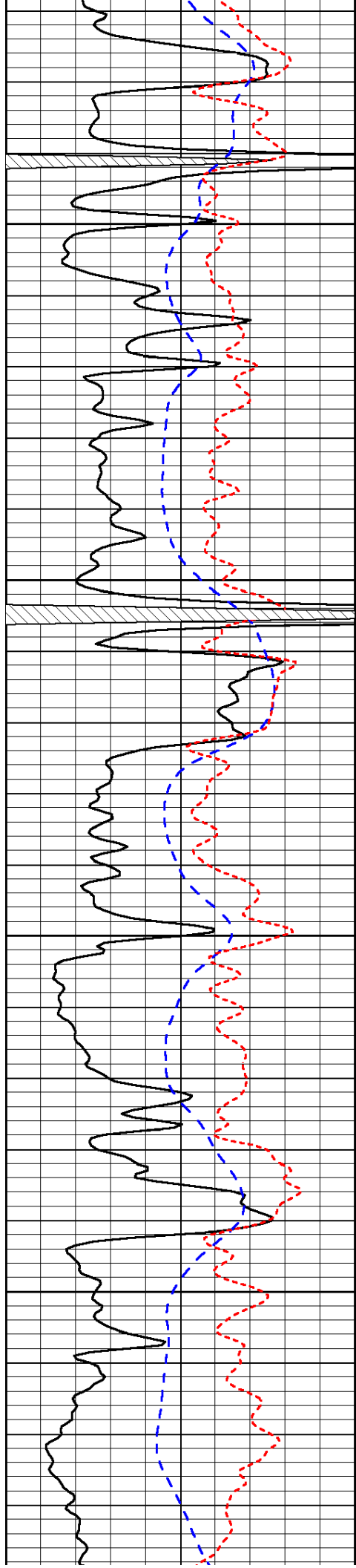
-28

-28

-28

-28

-28

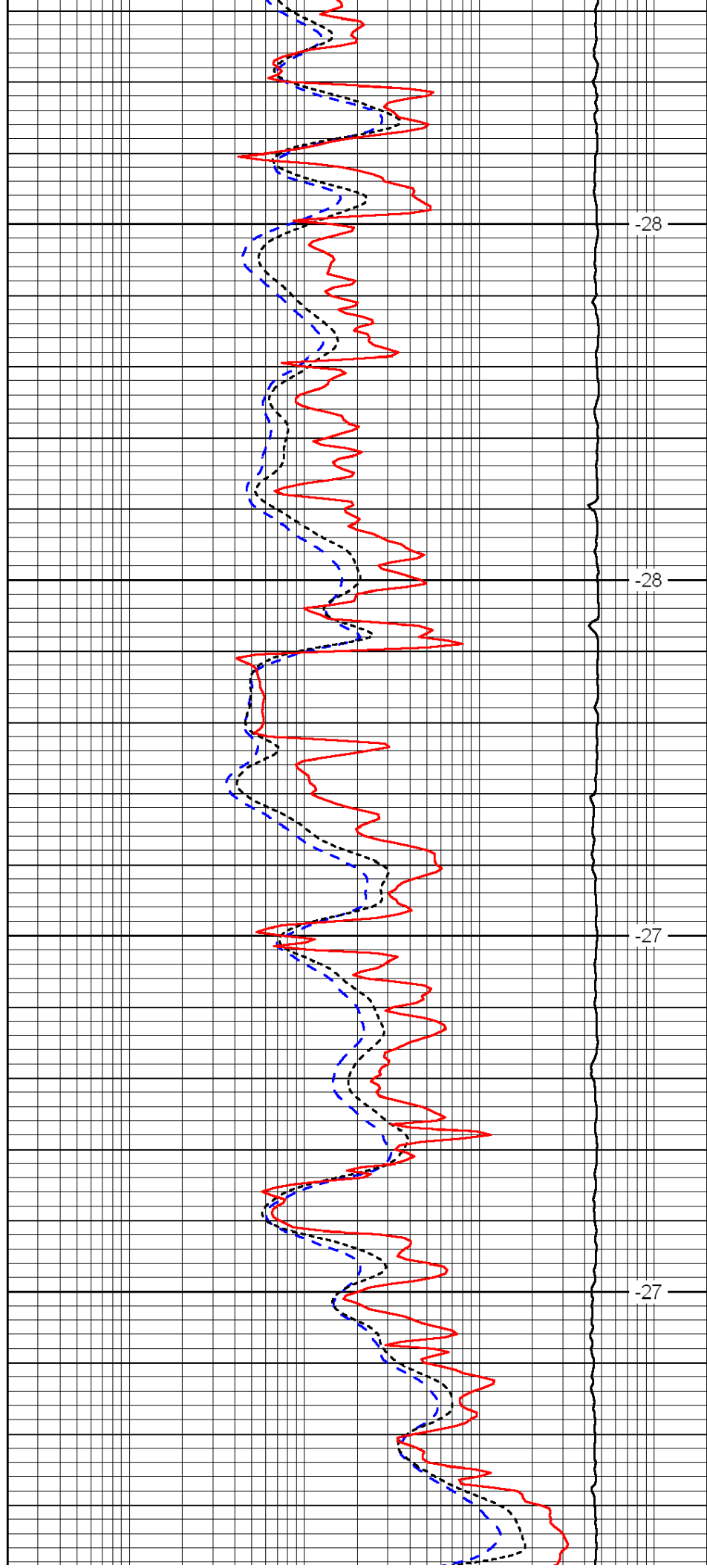


3850

3900

3950

4000

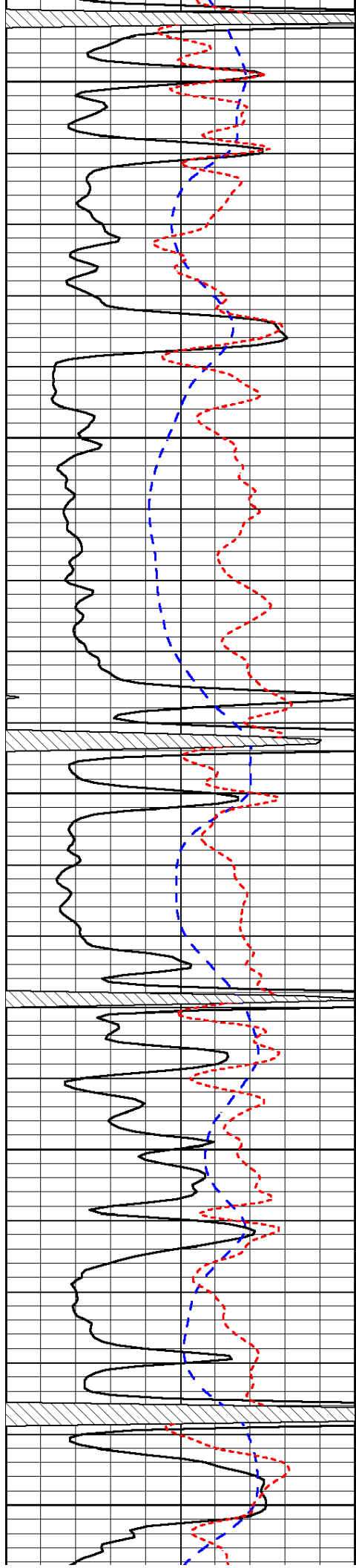


-28

-28

-27

-27



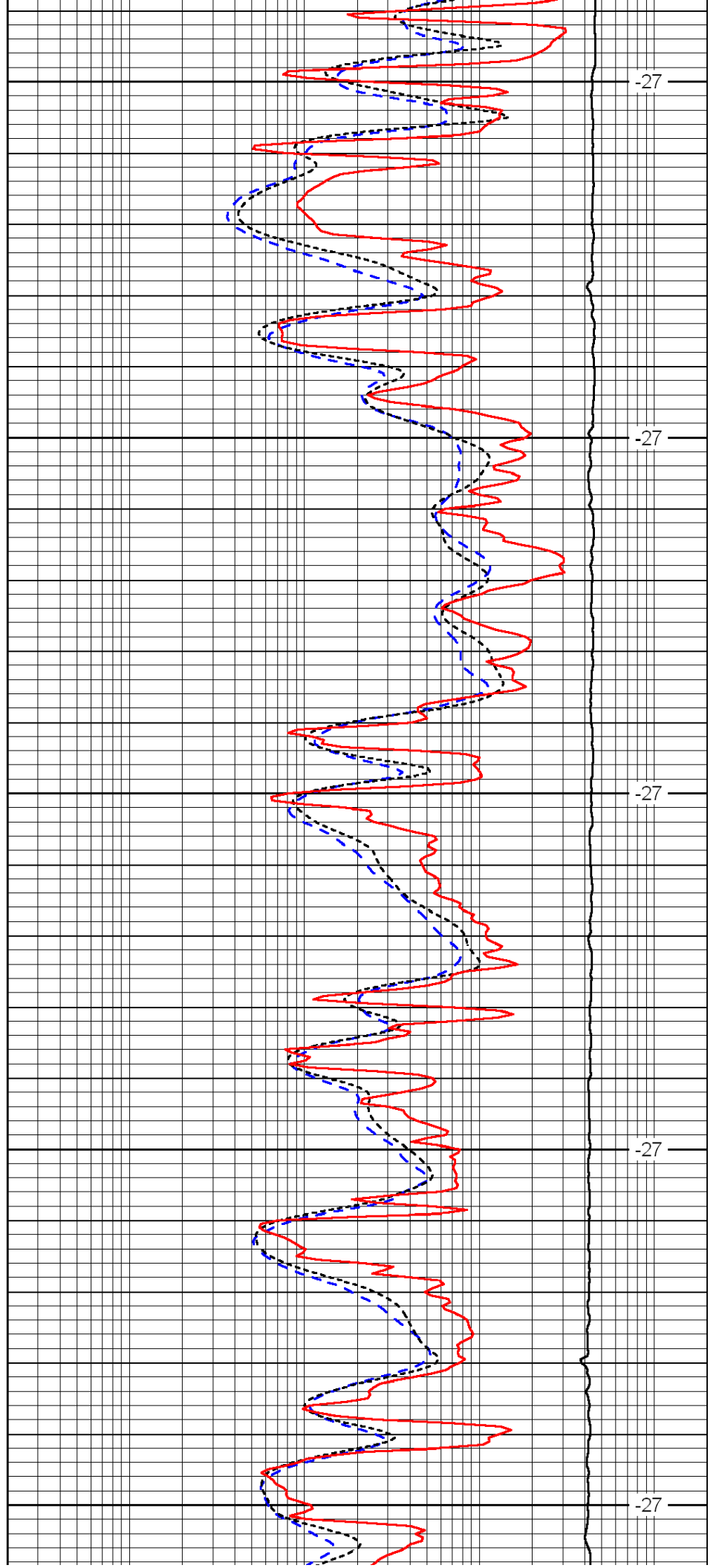
4050

4100

4150

4200

4250



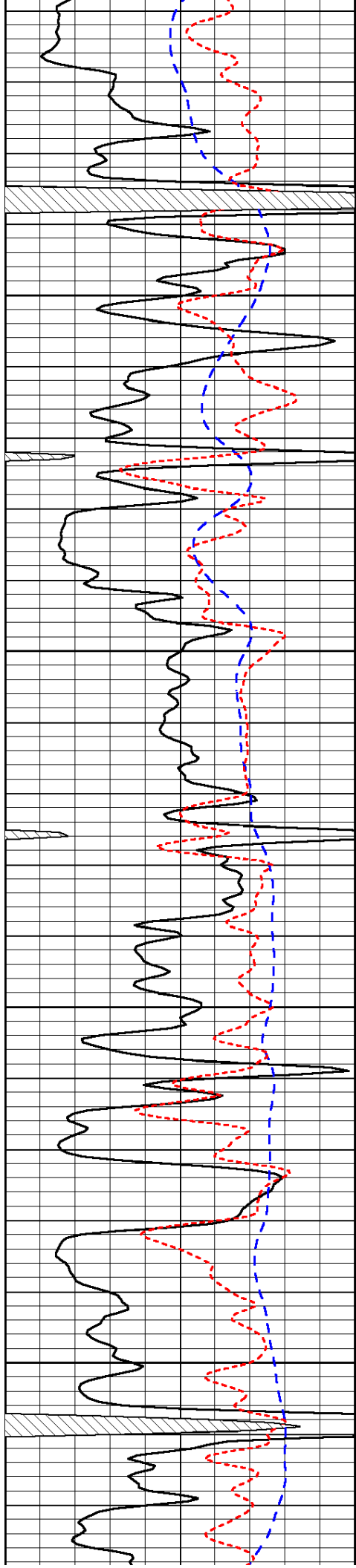
-27

-27

-27

-27

-27

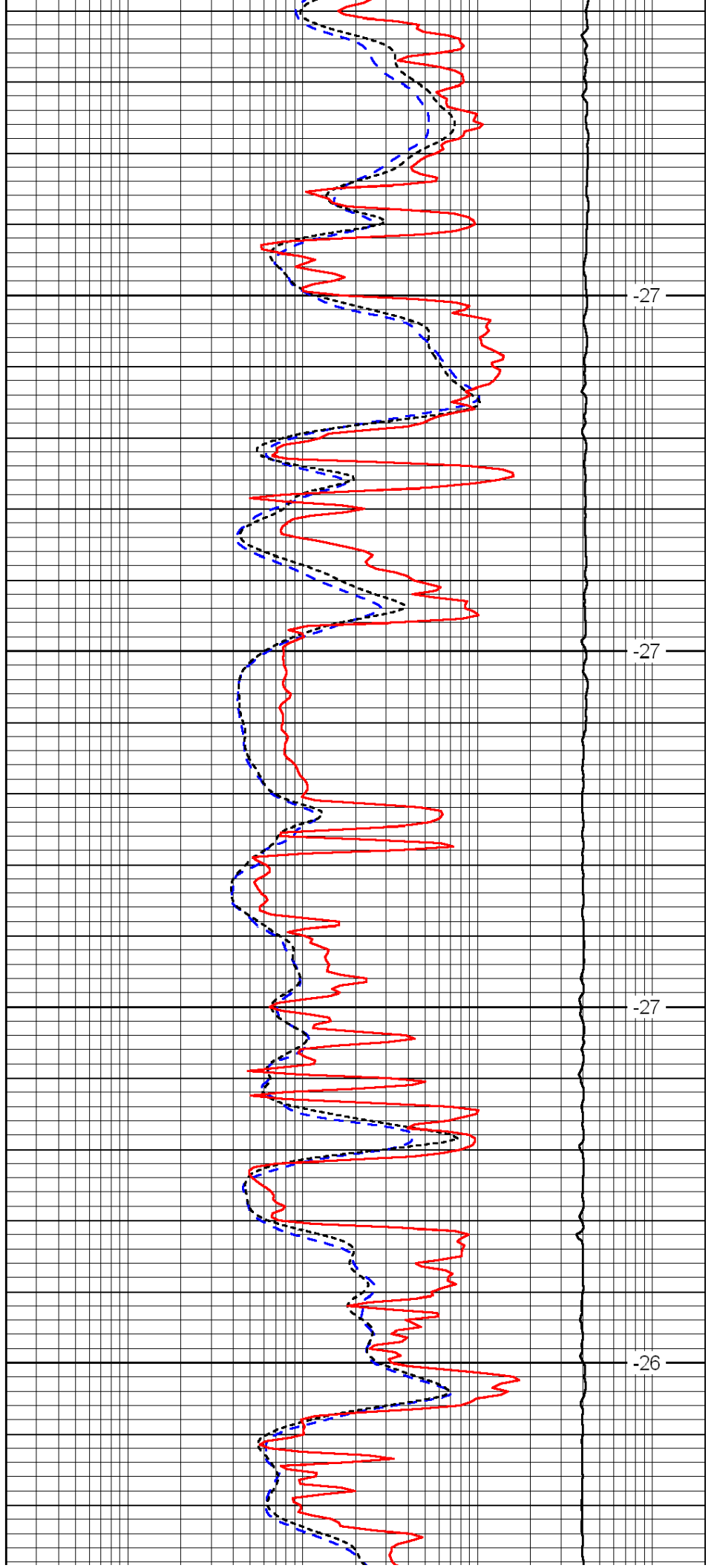


4300

4350

4400

4450

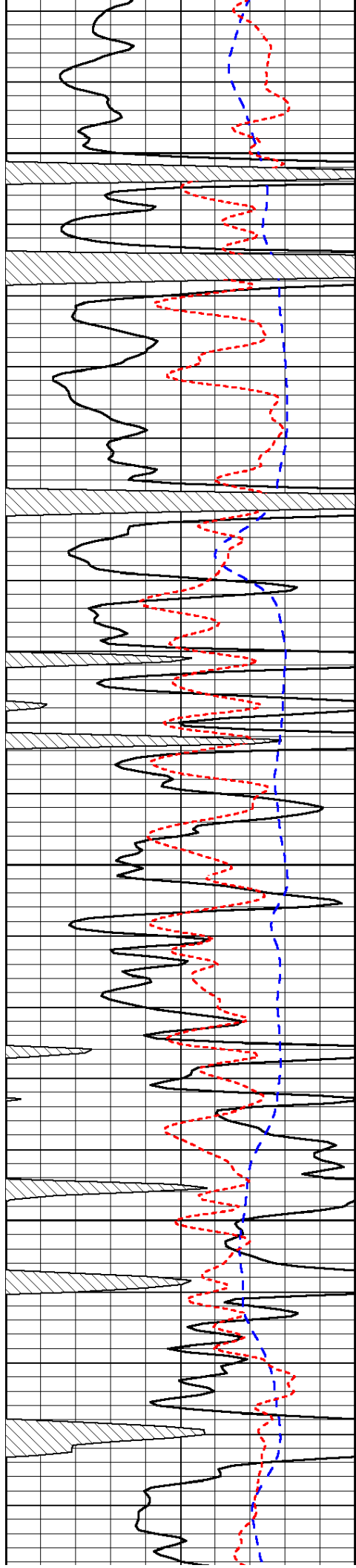


-27

-27

-27

-26

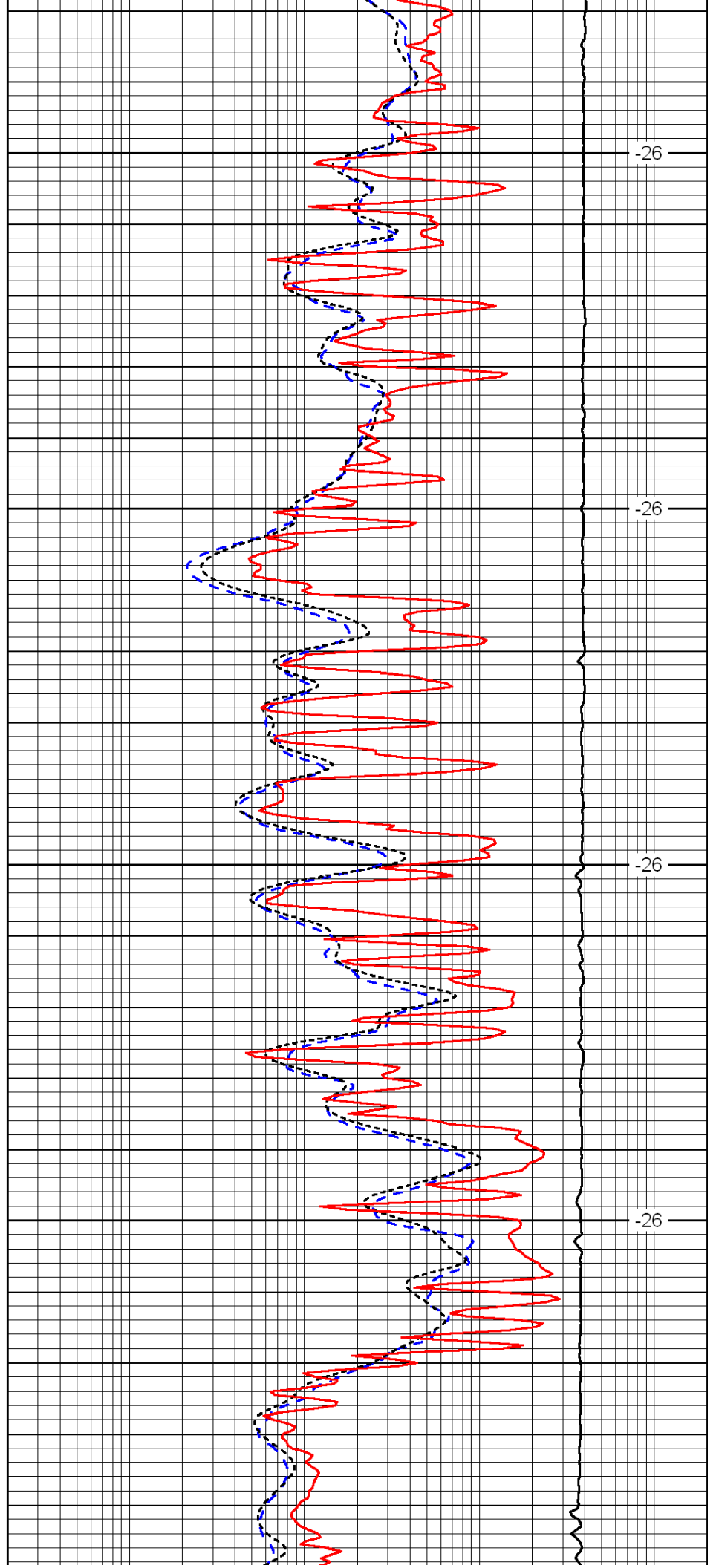


4500

4550

4600

4650

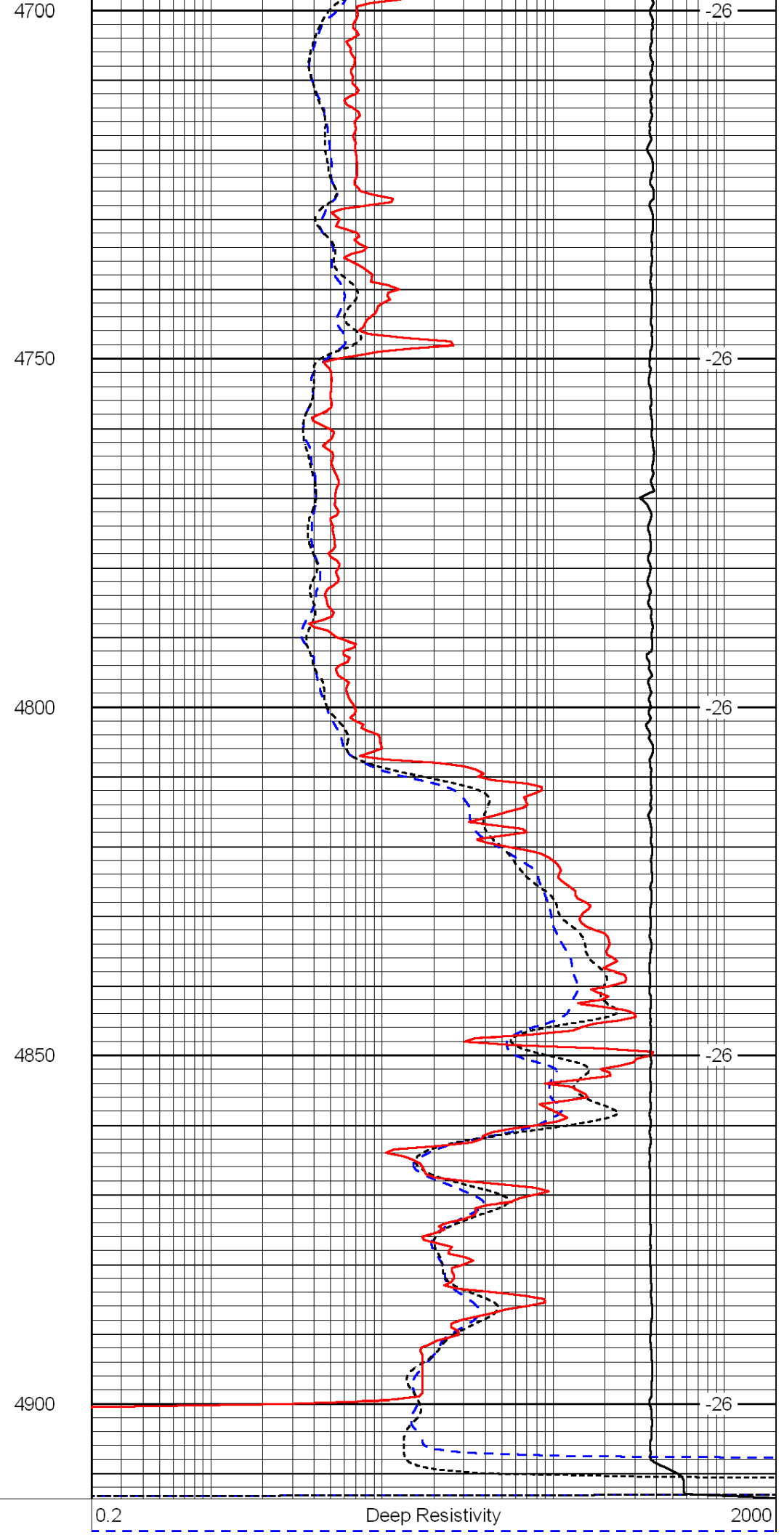
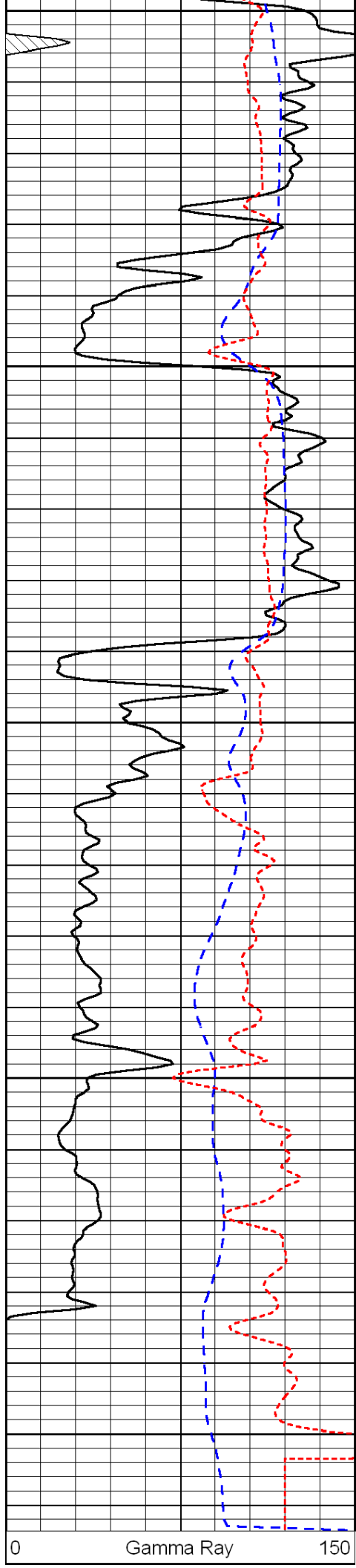


-26

-26

-26

-26



-200	SP (mV)	0
-160	Rxo / Rt	40

0.2	Medium Resistivity	2000
0.2	Shallow Resistivity	2000
15000	Line Tension	0

LSPD
