



# Microresistivity Log

DIGITAL LOG (785) 625-3858

API No.	15-195-22,658-00-00		
Company	Murfin Drilling Co., Inc.		
Well	Wanda No. 1-22		
Field	Wildcat		
County	Trego	State	Kansas
Location	950' FSL & 370' FWL		
Sec: 22	Twp: 12 S	Rge: 24 W	
Other Services	CNL/CDL DIL/BHCS		
Elevation	K.B. 2436 D.F. 2425 G.L. 2425		

Permanent Datum	Ground Level	Elevation 2425
Log Measured From	Kelly Bushing	11 Ft. Above Perm. Datum
Drilling Measured From	Kelly Bushing	
Date	4/29/2010	
Run Number	Two	
Depth Driller	4370	
Depth Logger	4370	
Bottom Logged Interval	4369	
Top Log Interval	3400	
Casing Driller	8.625 @ 225	
Casing Logger	224	
Bit Size	7.875	
Type Fluid in Hole	Chemical	
Salinity, ppm CL	4.200	
Density / Viscosity	9.2	55
pH / Fluid Loss	11.5	6.8
Source of Sample	Flowline	
Rm @ Meas. Temp	.40	@ 65
Rmf @ Meas. Temp	.30	@ 65
Rmc @ Meas. Temp	.54	@ 65
Source of Rmf / Rmc	Charts	
Rm @ BHT	.21	@ 122
Operating Rig Time	5 Hours	
Max Rec. Temp. F	122	
Equipment Number	007	
Location	Hays	
Recorded By	K. Bange	
Witnessed By	Bob Stolzie	

<<< Fold Here >>>

All interpretations are opinions based on inferences from electrical or other measurements and we cannot and do not guarantee the accuracy or correctness of any interpretation, and we shall not, except in the case of gross or willful negligence on our part, be liable or responsible for any loss, costs, damages, or expenses incurred or sustained by anyone resulting from any interpretation made by any of our officers, agents or employees. These interpretations are also subject to our general terms and conditions set out in our current Price Schedule.

### Comments

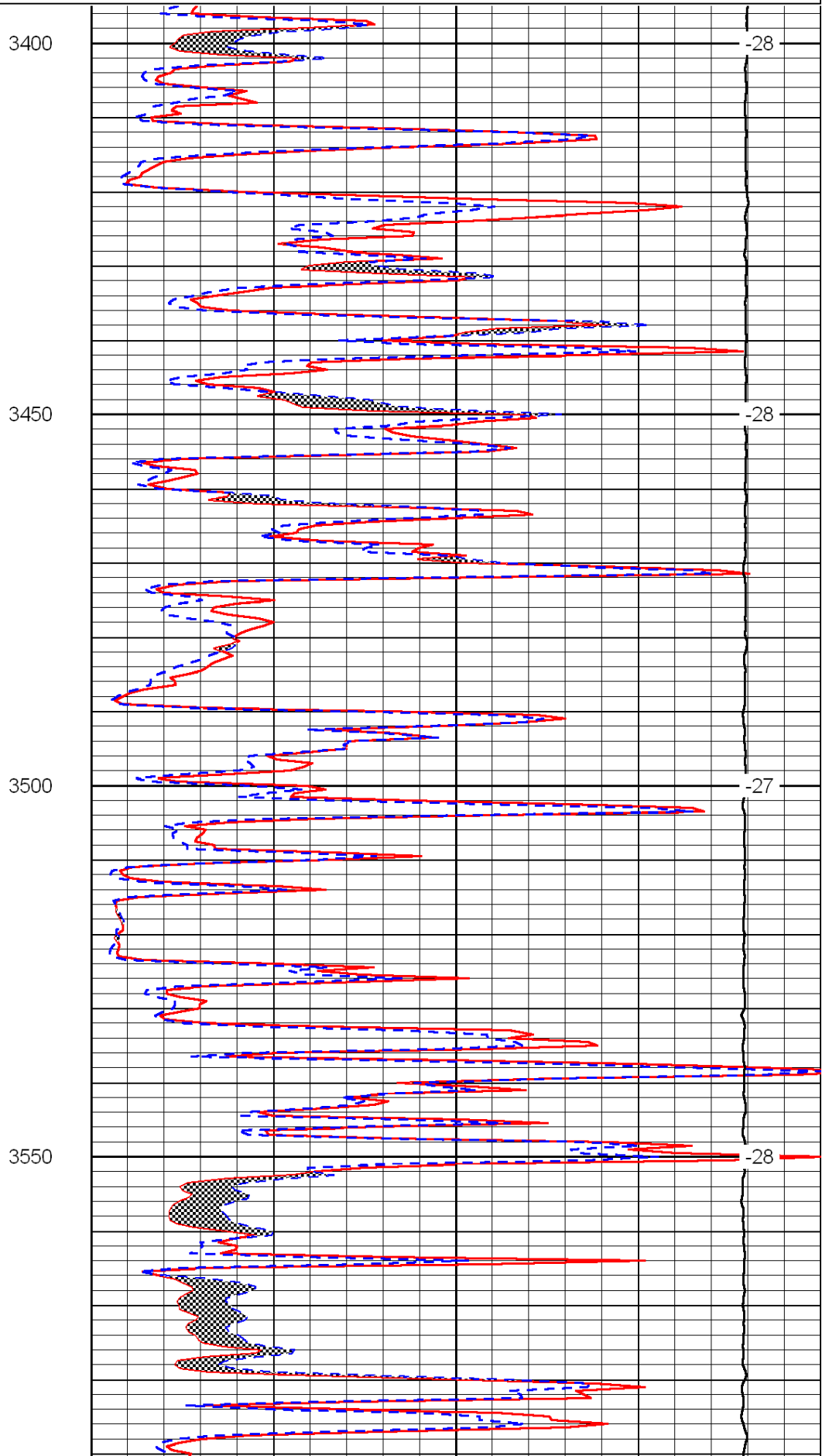
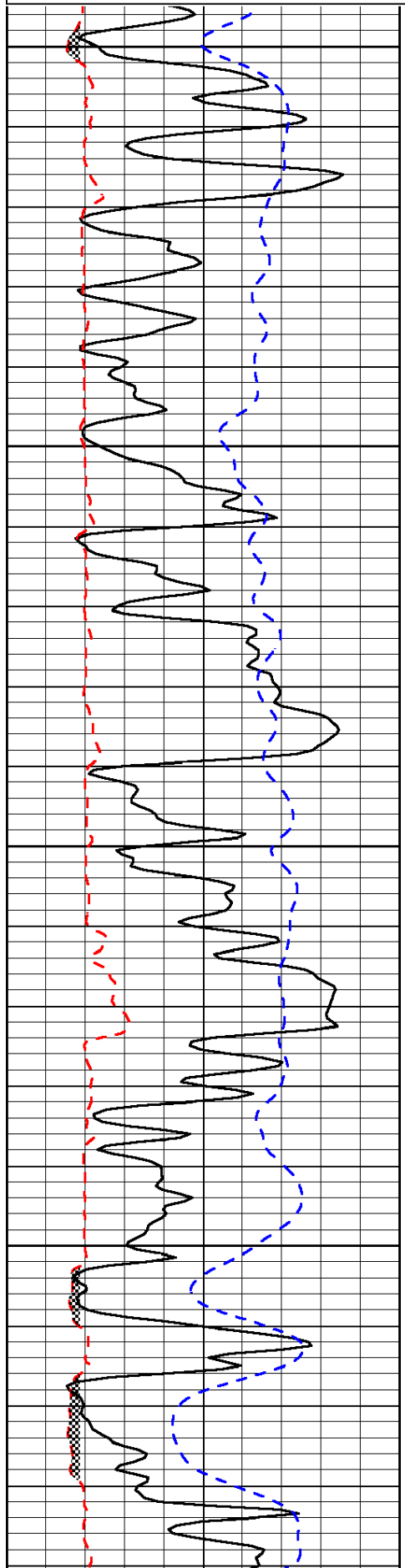
Thank you for using Log-Tech, Inc.  
(785) 625-3858

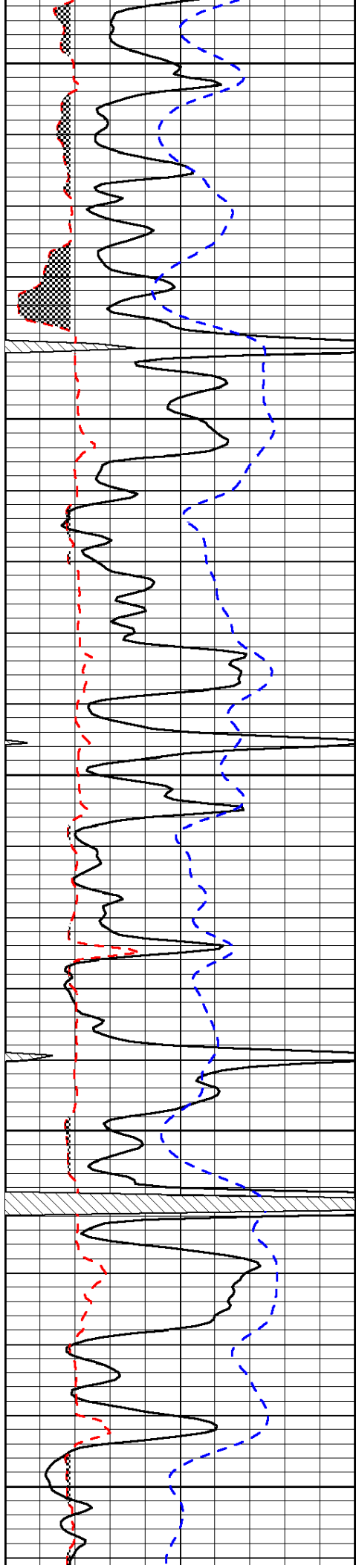
I-70 W to Exit 127 at Wakeeney, 1 S to Golf Course, 4 W to 200 rd, 1/2 S, E into

0	Gamma Ray	150
6	Micro Log Caliper (GAPI)	16
-200	SP (mV)	0

0	Micro Inverse 1 X 1	40
0	Micro Normal 2"	40
15000	Line Weight	0

LSPD





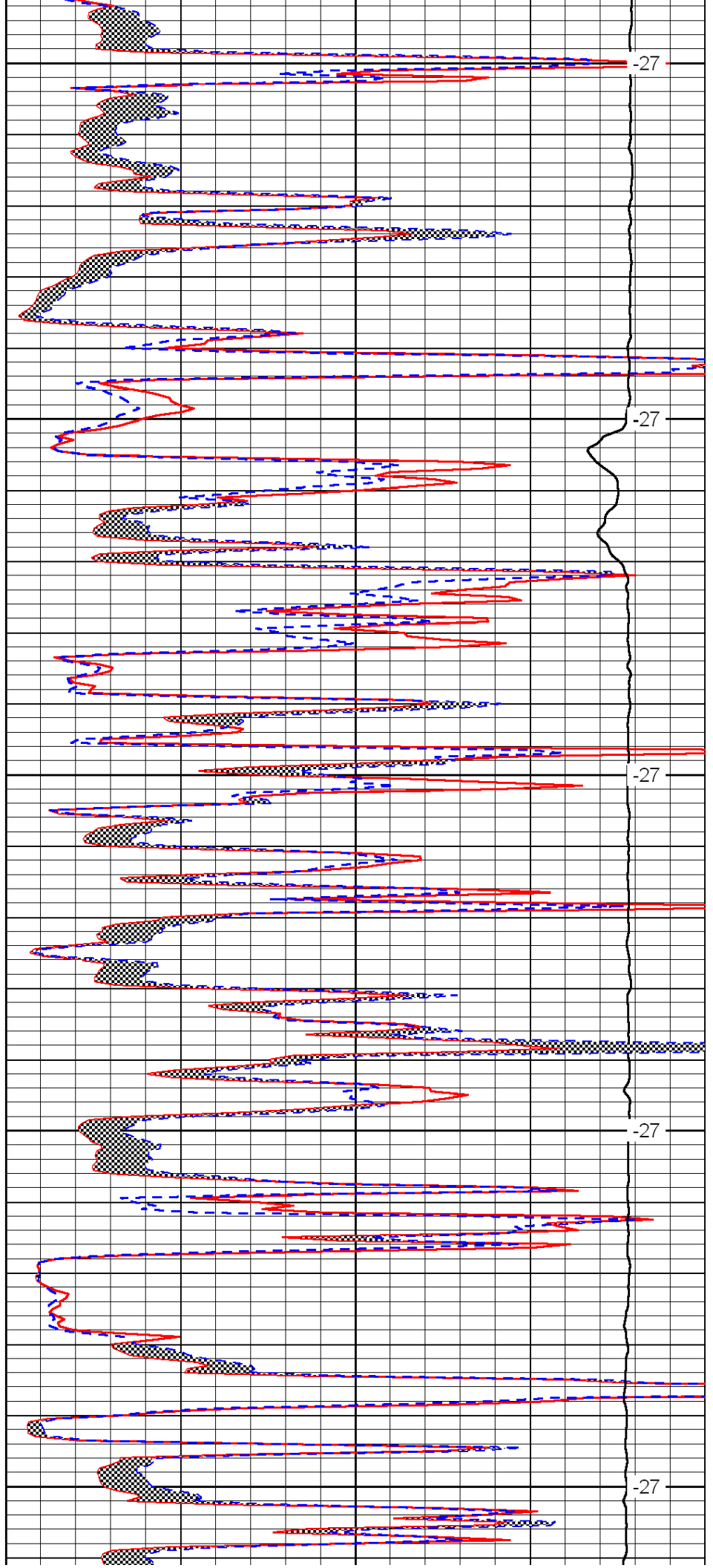
3600

3650

3700

3750

3800



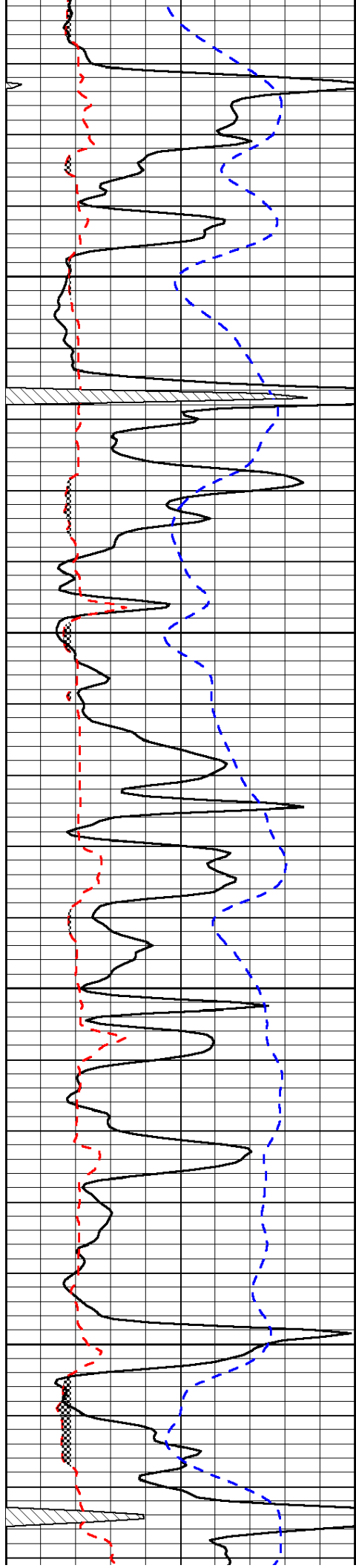
-27

-27

-27

-27

-27

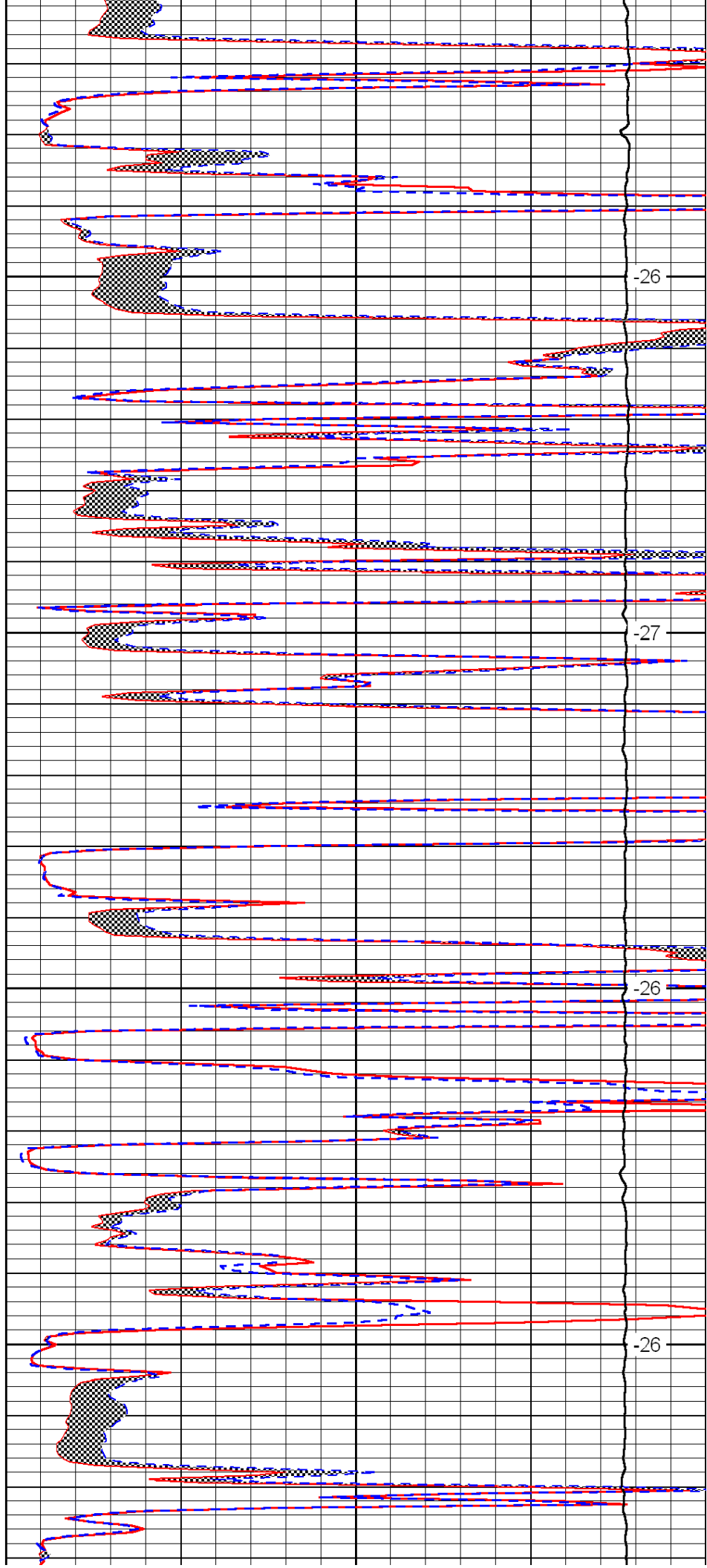


3850

3900

3950

4000

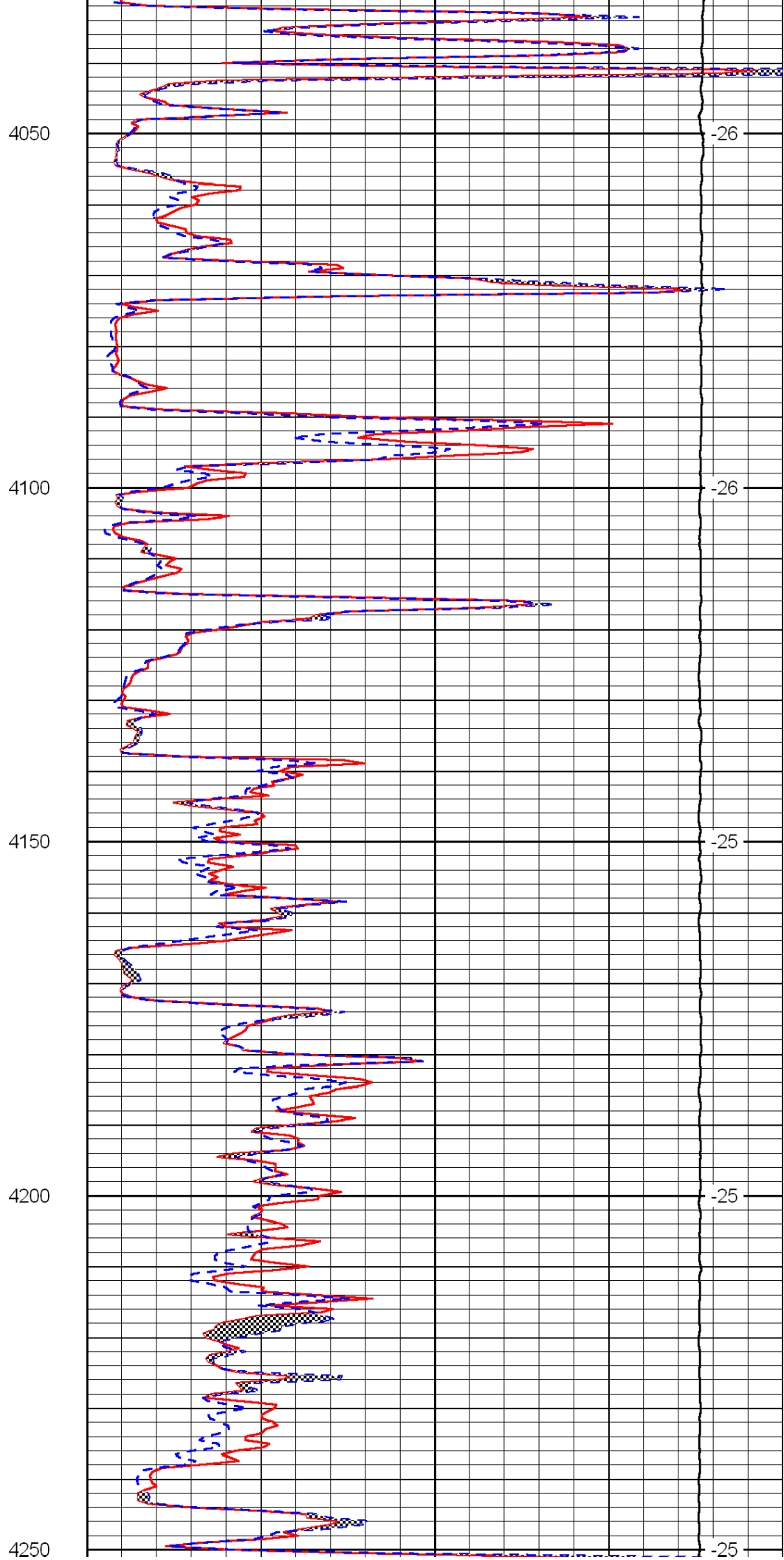
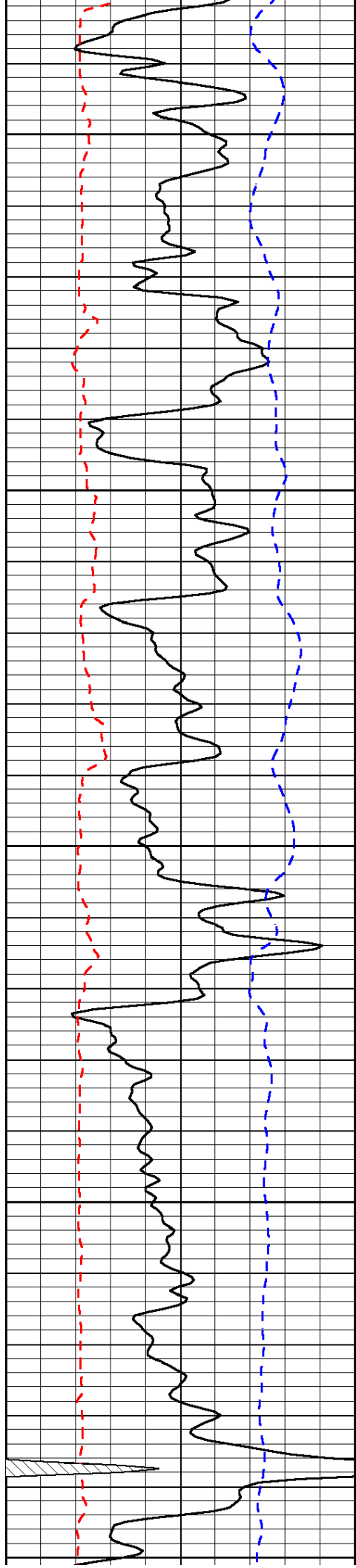


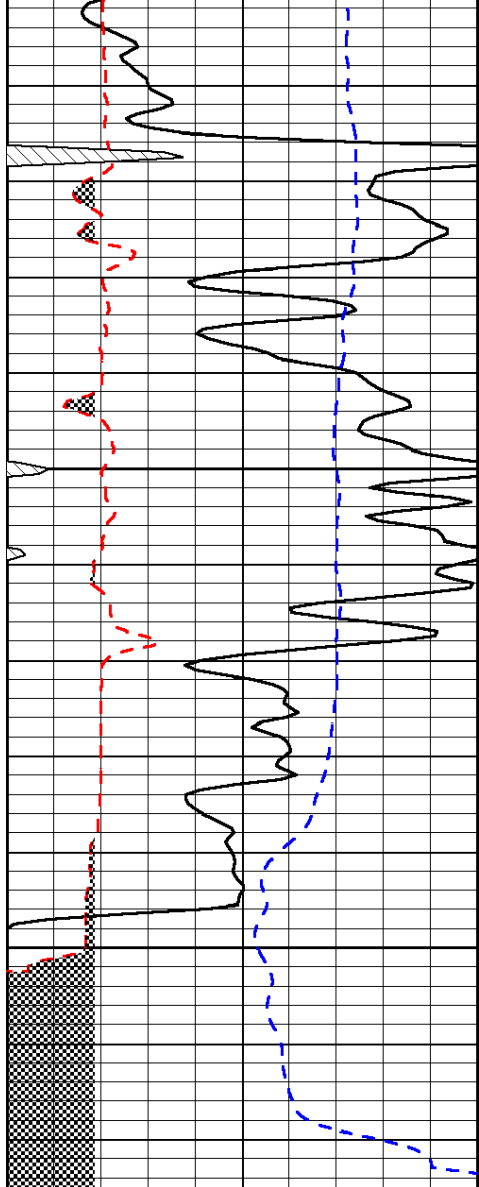
-26

-27

-26

-26

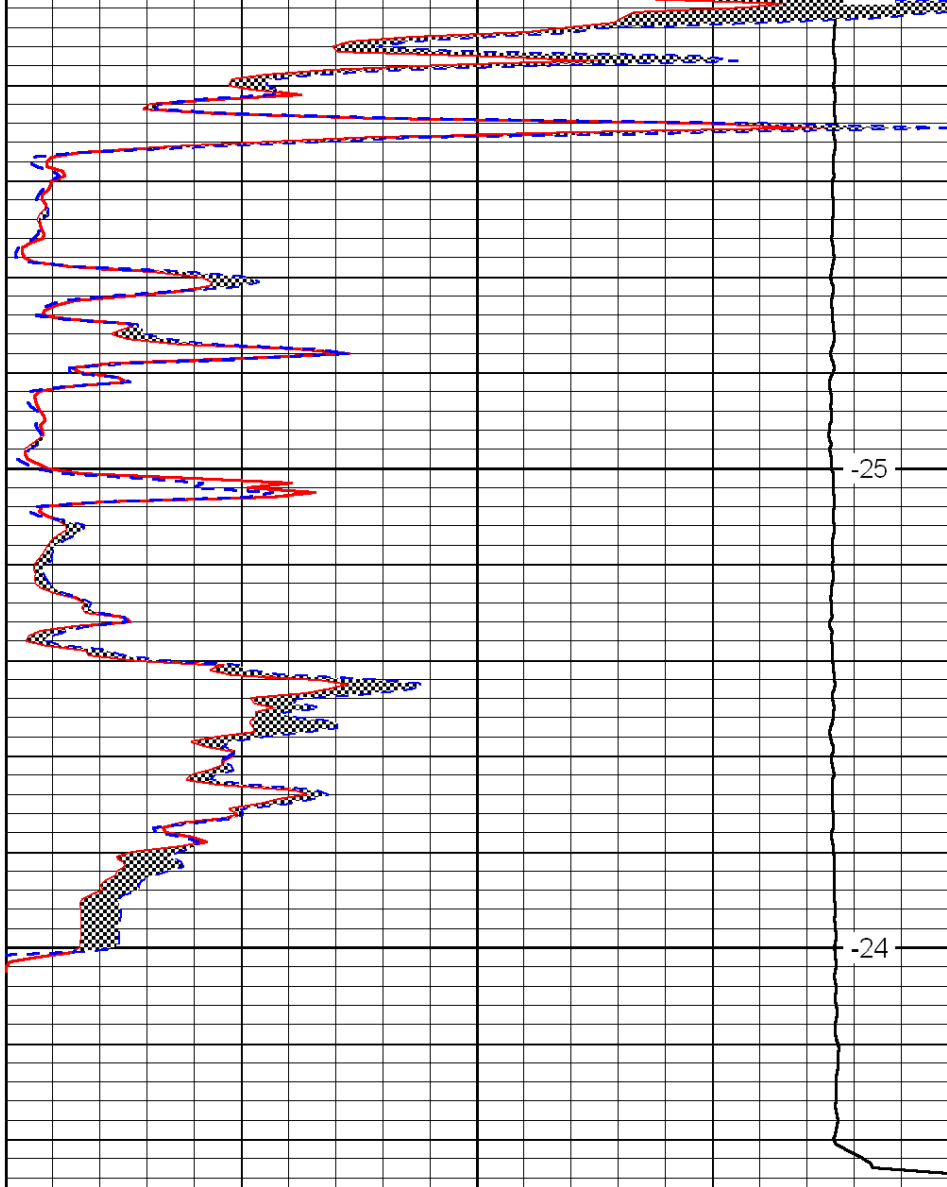




0	Gamma Ray	150
6	Micro Log Caliper (GAPI)	16
-200	SP (mV)	0

4300

4350



0	Micro Inverse 1 X 1	40
0	Micro Normal 2''	40
15000	Line Weight	0

-25

-24

LSPD