



**Borehole Compensated
Sonic Log**

DIGITAL LOG (785) 625-3858

| | |
|----------------|---------------------------|
| API No. | 15-195-22,658-00-00 |
| Company | Murfin Drilling Co., Inc. |
| Well | Wanda No. 1-22 |
| Field | Wildcat |
| County | Trego |
| State | Kansas |
| Location | 950' FSL & 370' FWL |
| Sec: 22 | Twp: 12 S Rge: 24 W |
| Other Services | CNL/CDL MEL/DIL |

| | | |
|------------------------|---------------|--------------------------|
| Permanent Datum | Ground Level | Elevation 2425 |
| Log Measured From | Kelly Bushing | 11 Ft. Above Perm. Datum |
| Drilling Measured From | Kelly Bushing | |
| Date | 4/29/2010 | Elevation |

| | |
|------------------------|-------------|
| Run Number | Two |
| Type Log | BHC Sonic |
| Depth Driller | 4370 |
| Depth Logger | 4370 |
| Bottom Logged Interval | 4359 |
| Top Logged Interval | 200 |
| Type Fluid In Hole | Chemical |
| Salinity, PPM CL | 4,200 |
| Density | 9.2 |
| Level | Full |
| Max. Rec. Temp. F | 122 |
| Operating Rig Time | 5 Hours |
| Equipment -- Location | 007 Hays |
| Recorded By | K. Bange |
| Witnessed By | Bob Stolzle |

| Borehole Record | | | | Casing Record | | | |
|-----------------|-------|------|------|---------------|------|------|-----|
| Run No. | Bit | From | To | Size | Wgt. | From | To |
| 1 | 12.25 | 00 | 225 | 8.625 | 24# | 00 | 225 |
| 2 | 7.875 | 225 | 4370 | | | | |
| | | | | | | | |
| | | | | | | | |
| | | | | | | | |
| | | | | | | | |
| | | | | | | | |
| | | | | | | | |
| | | | | | | | |

<<< Fold Here >>>

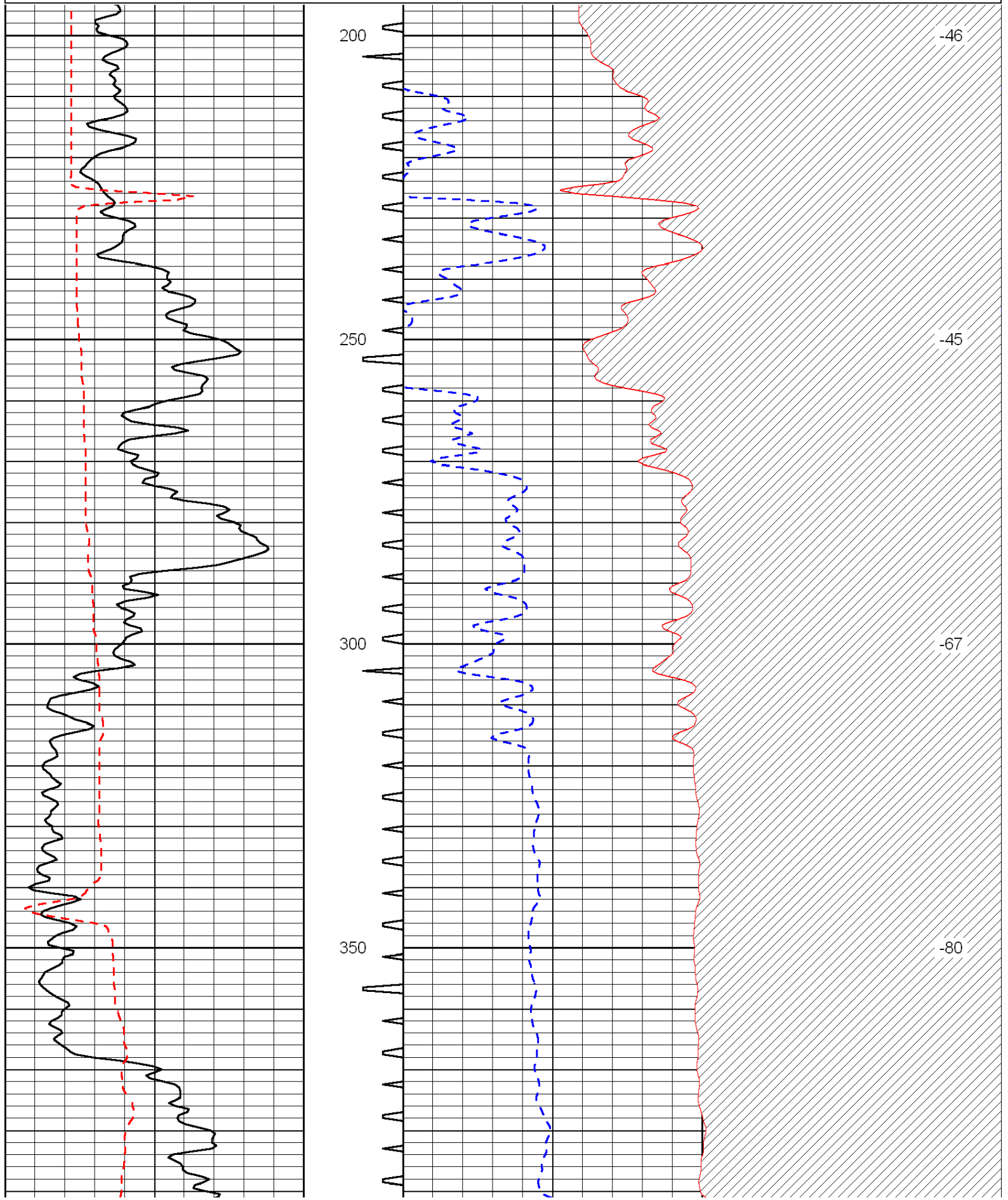
All interpretations are opinions based on inferences from electrical or other measurements and we cannot and do not guarantee the accuracy or correctness of any interpretation, and we shall not, except in the case of gross or willful negligence on our part, be liable or responsible for any loss, costs, damages, or expenses incurred or sustained by anyone resulting from any interpretation made by any of our officers, agents or employees. These interpretations are also subject to our general terms and conditions set out in our current Price Schedule.

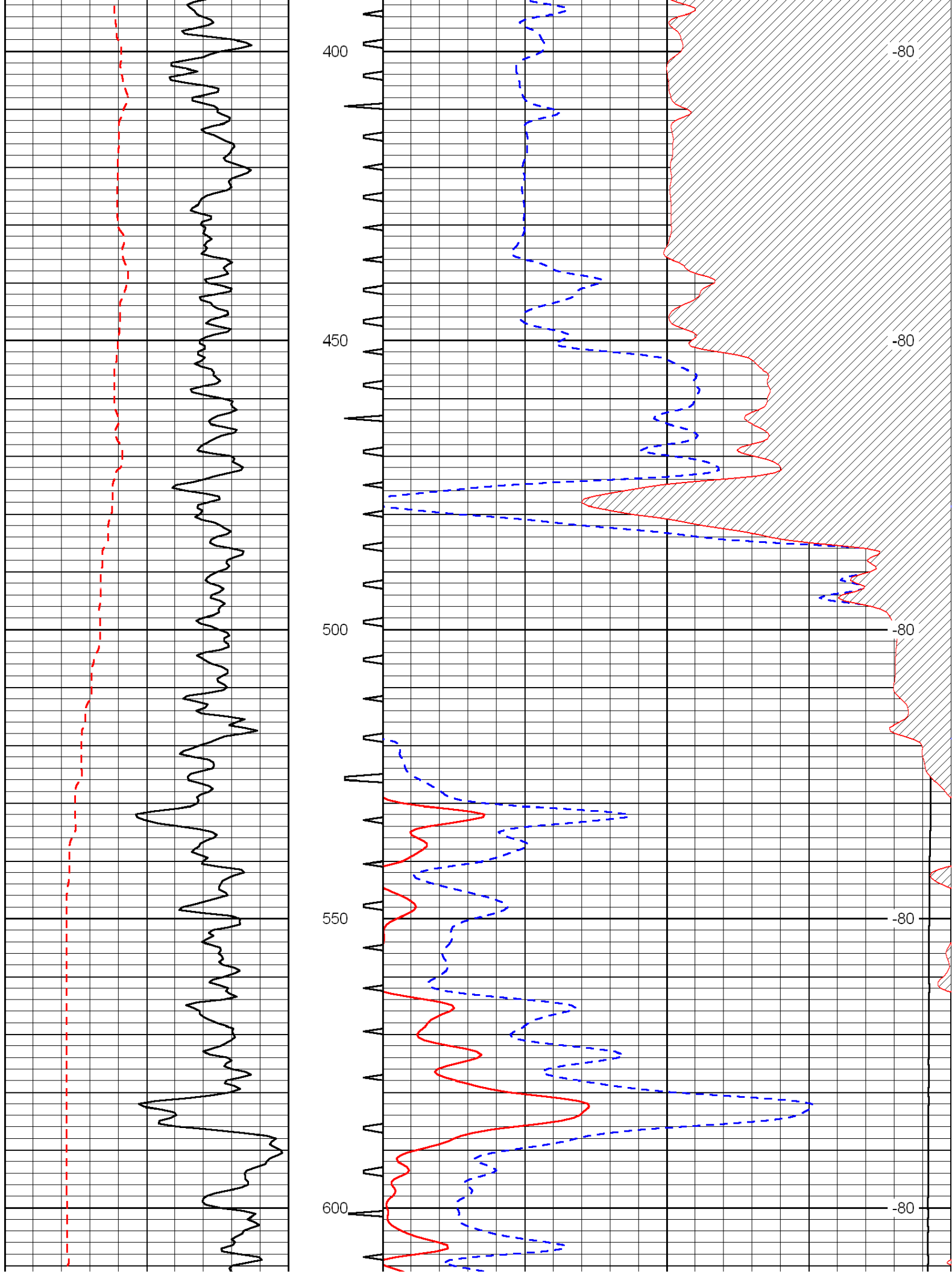
Comments

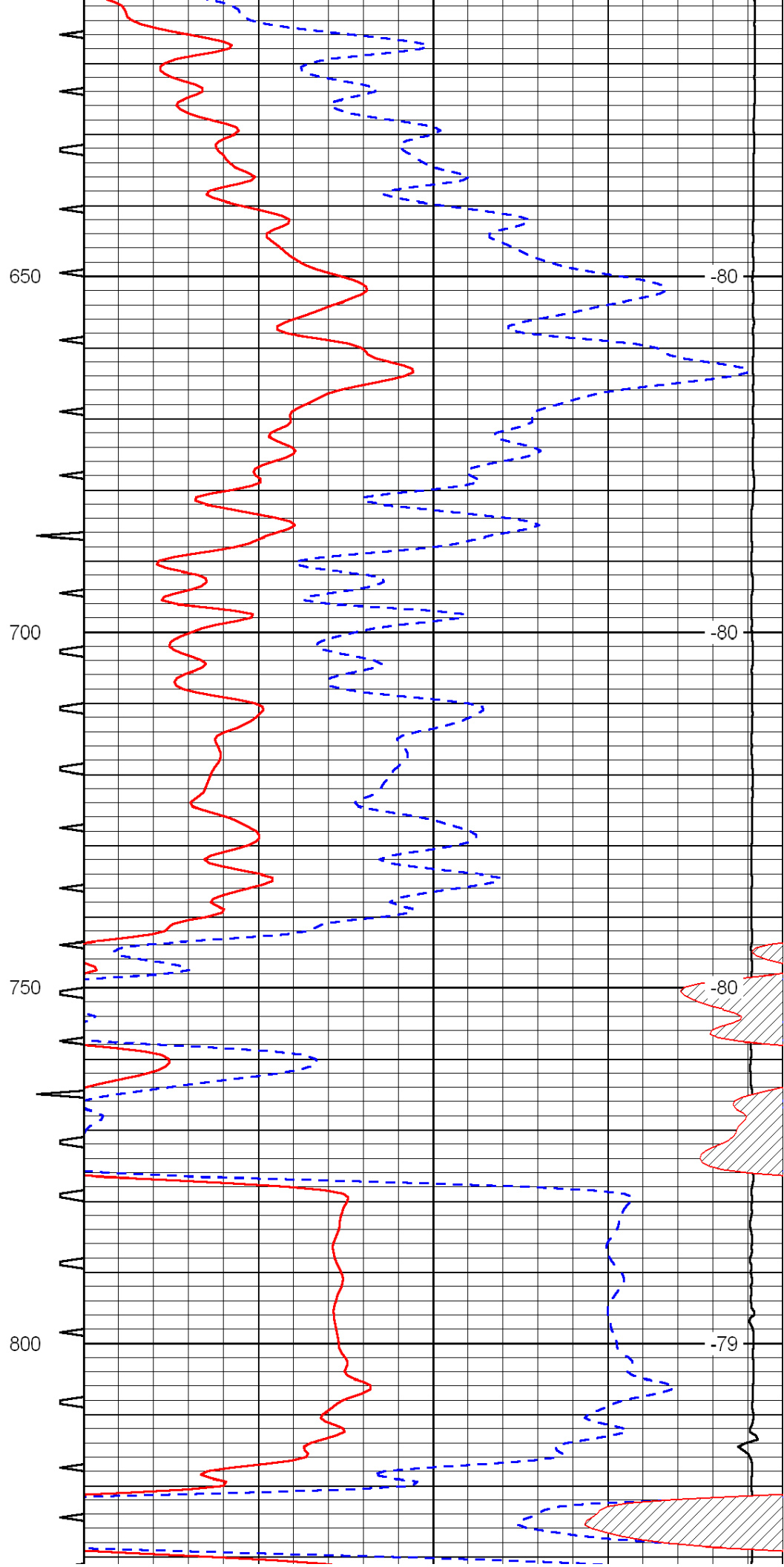
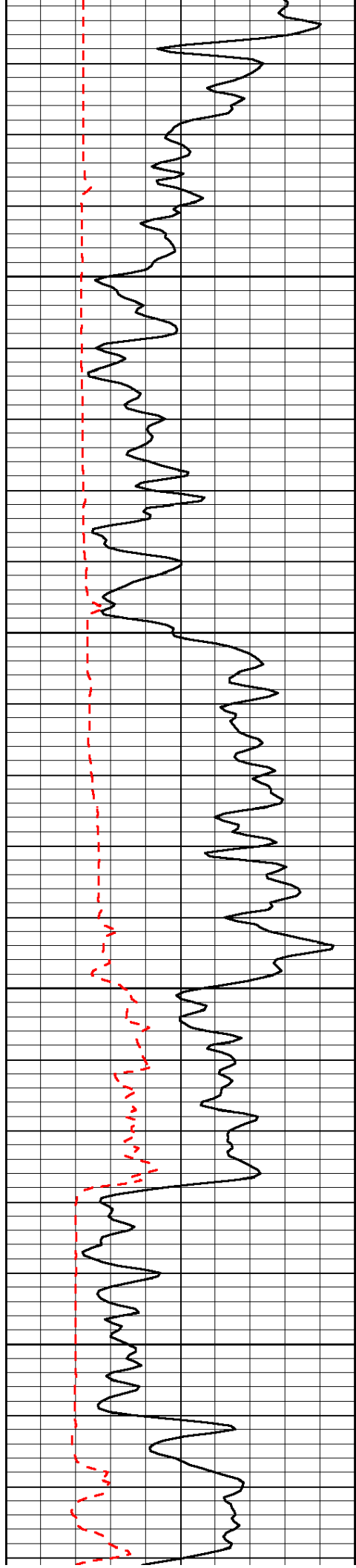
Thank you for using Log-Tech, Inc.
(785) 625-3858

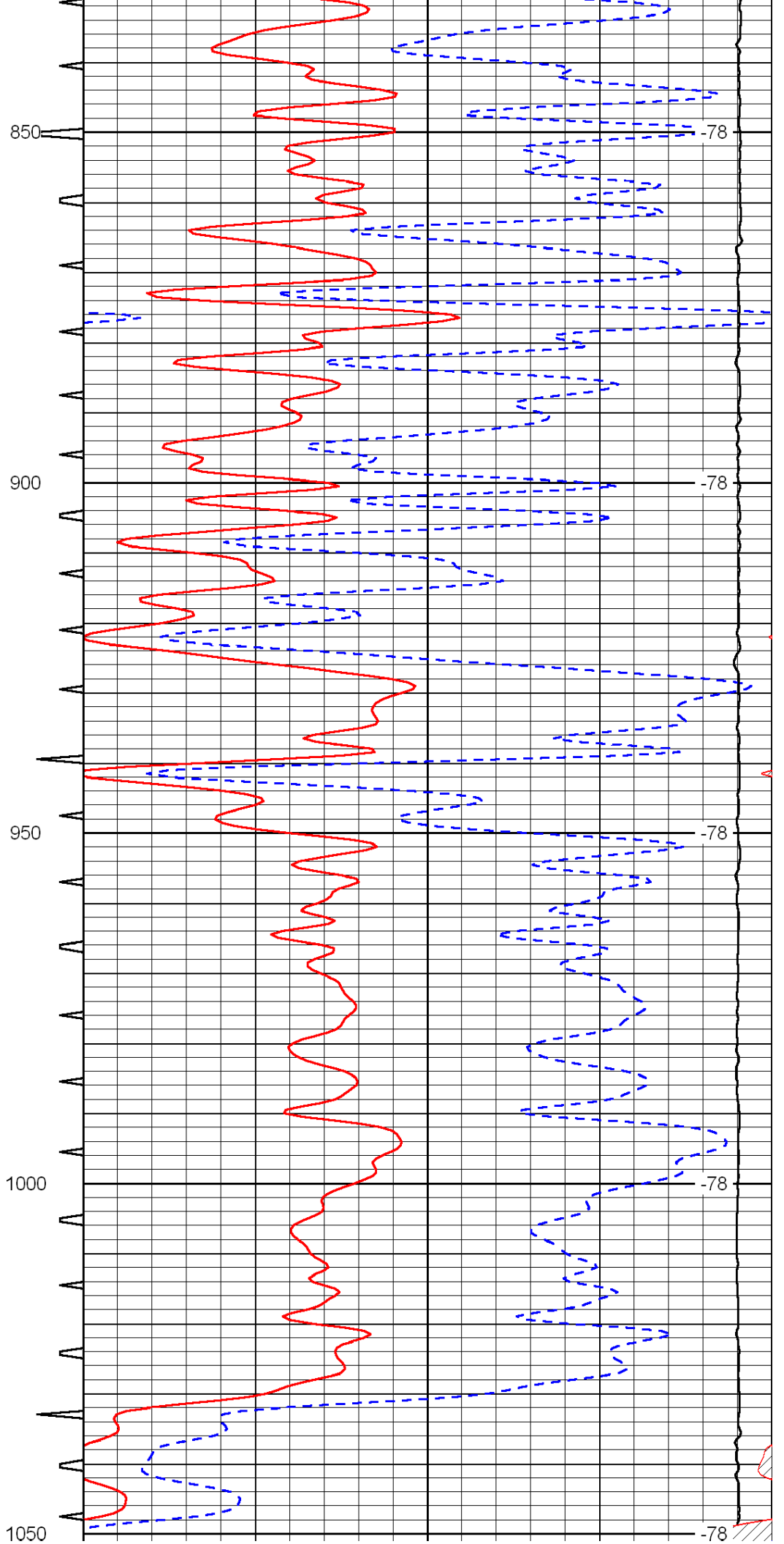
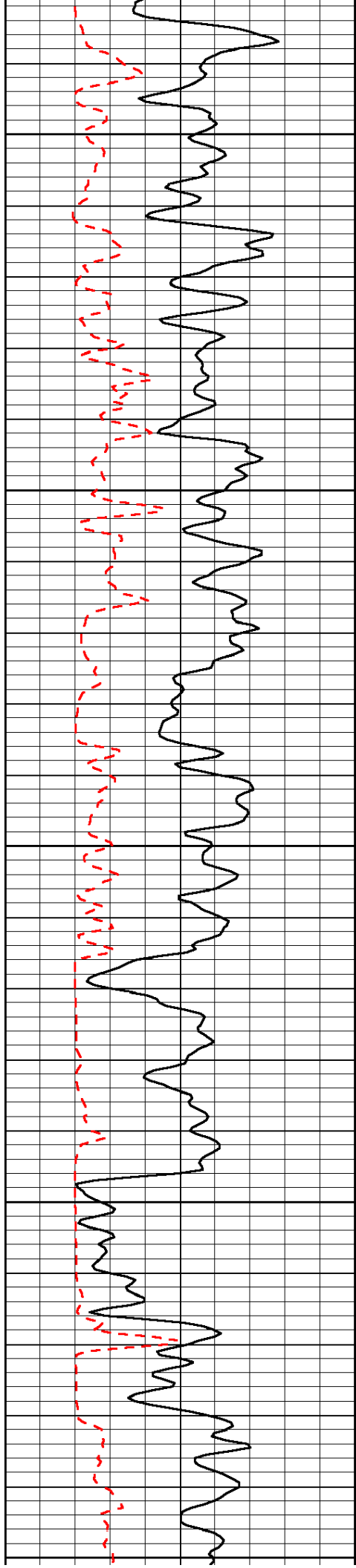
I-70 W to Exit 127 at Wakeeney, 1 S to Golf Course, 4 W to 200 rd, 1/2 S, E into

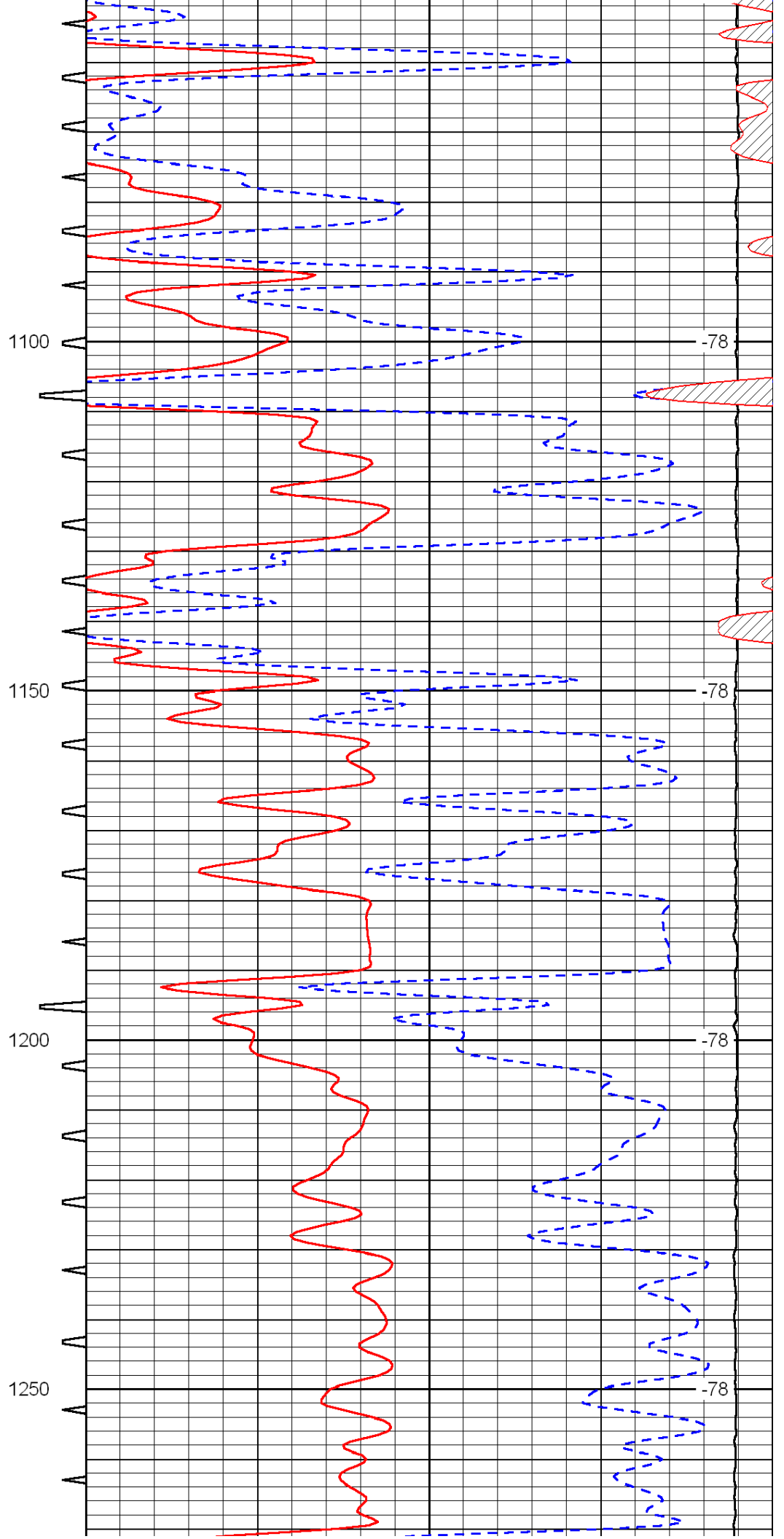
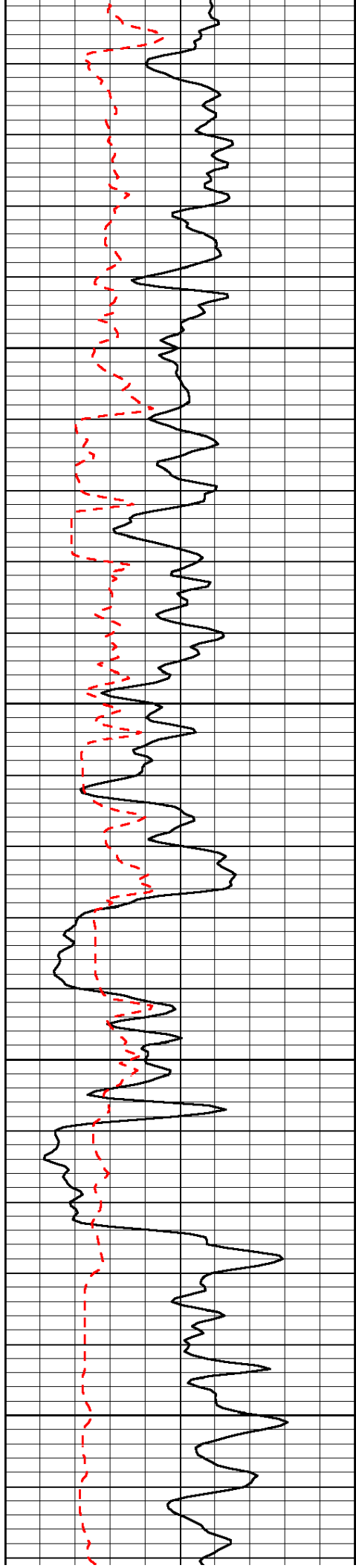
| | | | | | | |
|-----|----------------|-----|-----------|-------|----------------------|------|
| 0 | Gamma Ray | 150 | Sonic Int | 140 | Delta Time (usec/ft) | 40 |
| 150 | Gamma Ray | 300 | 5 | 0 | SPOR | -10 |
| 6 | Caliper (GAPI) | 16 | | 15000 | LTEN (lb) | 0 |
| | | | | | | LSPD |

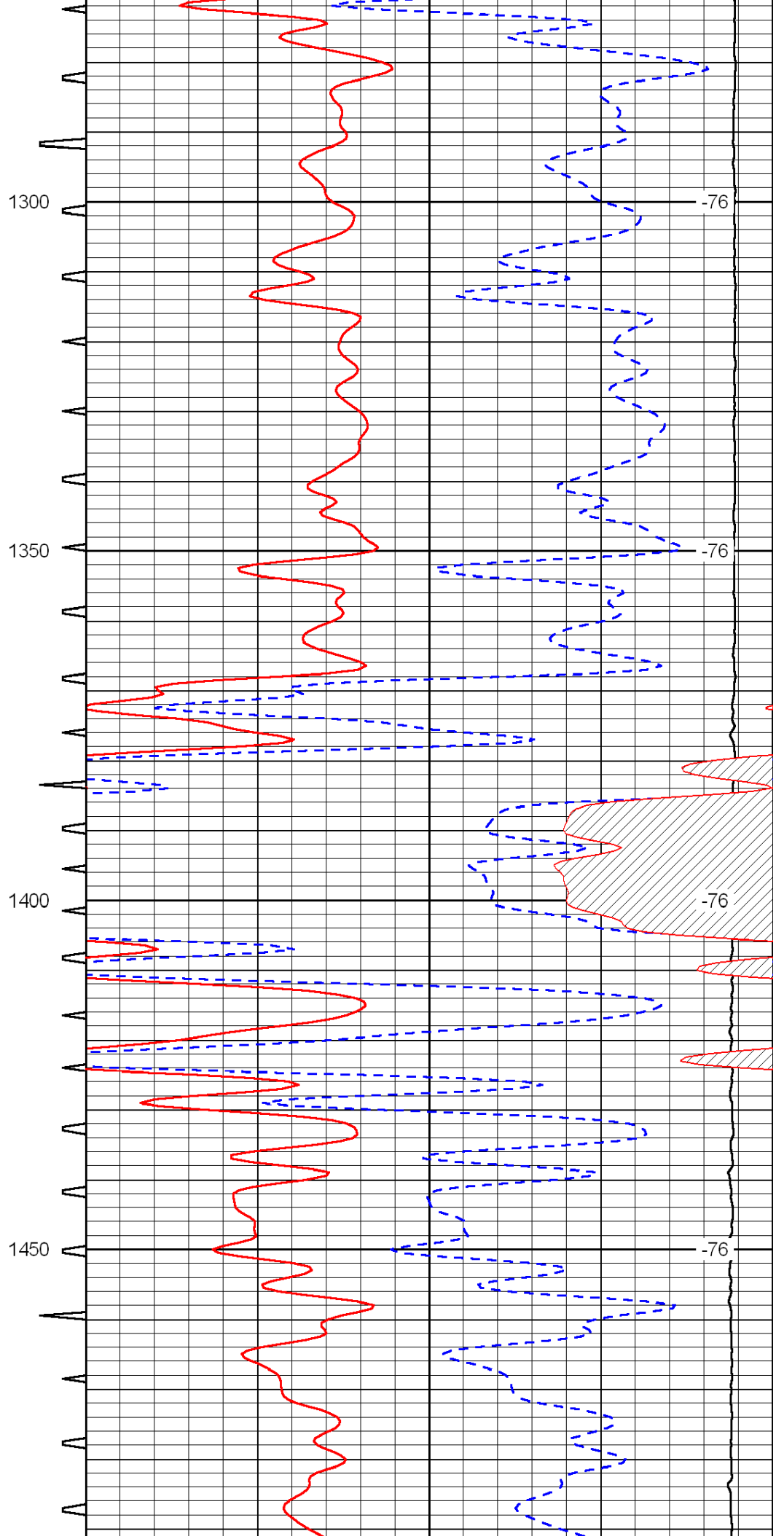
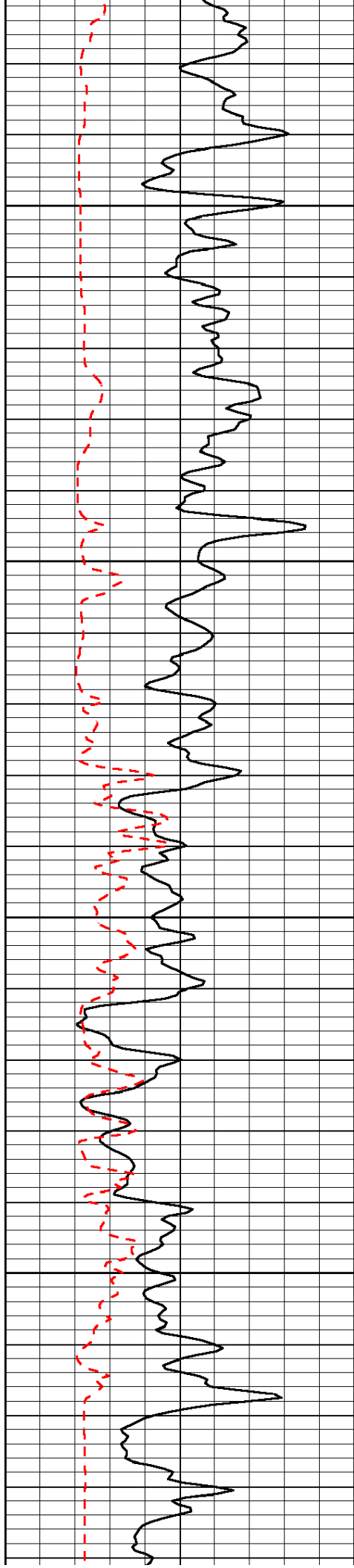


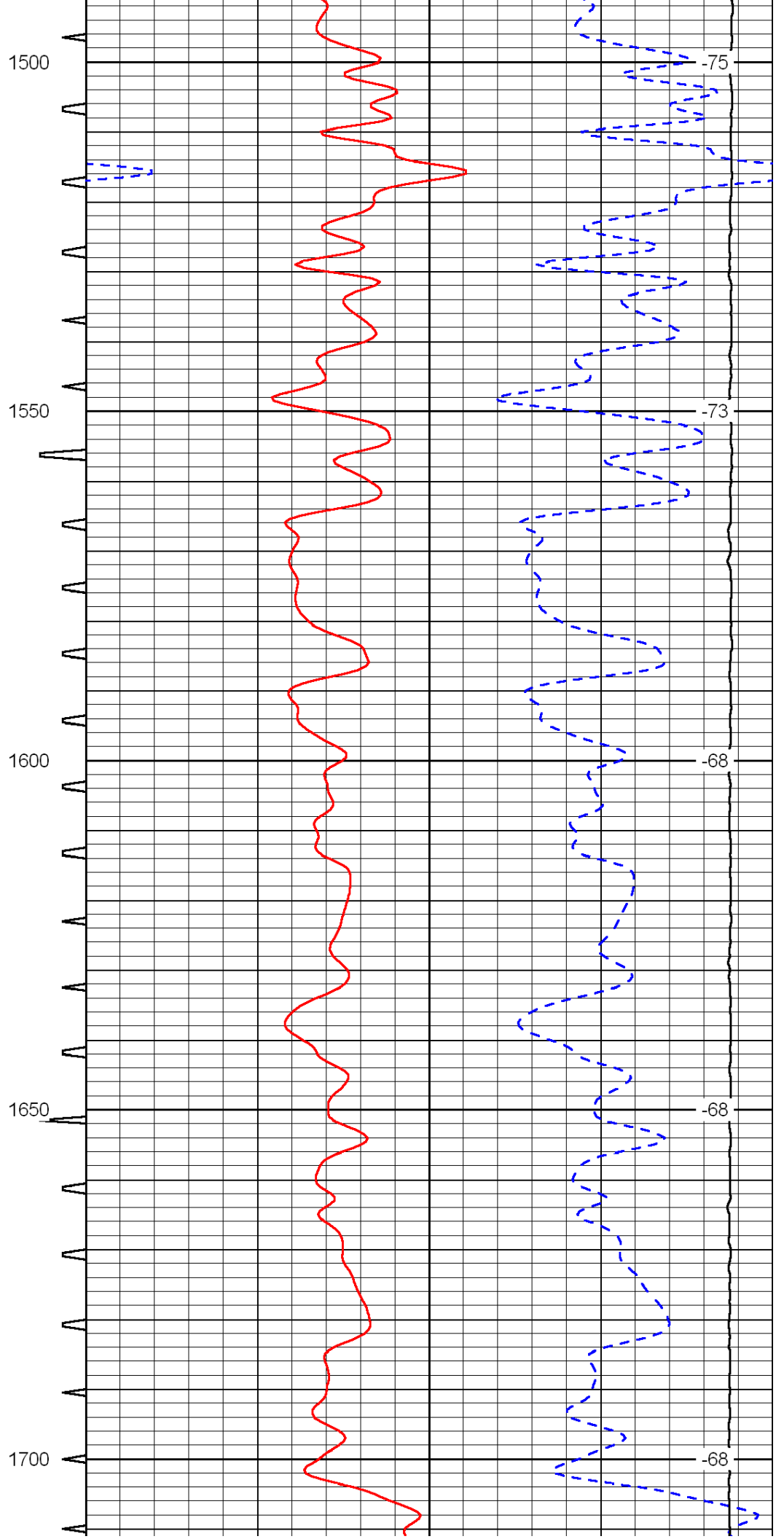
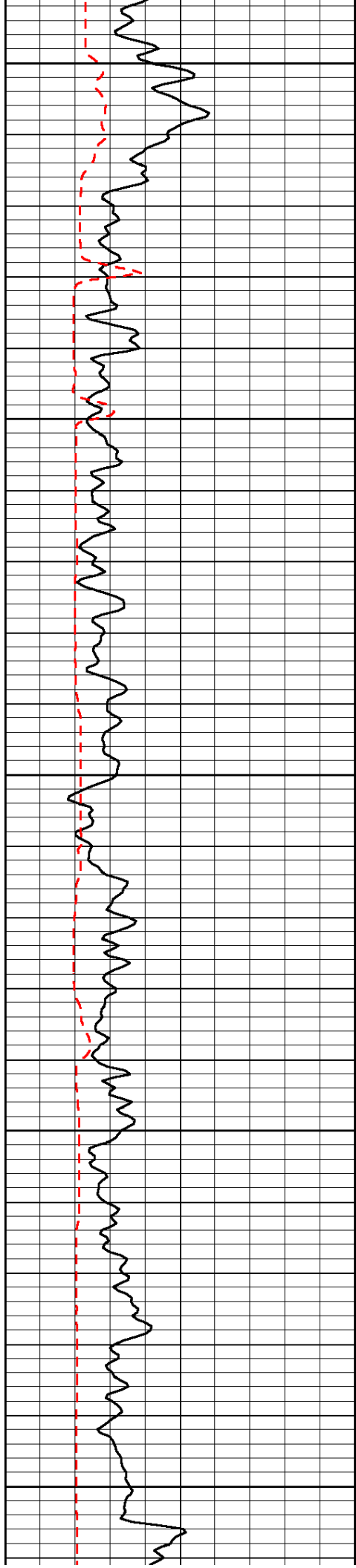


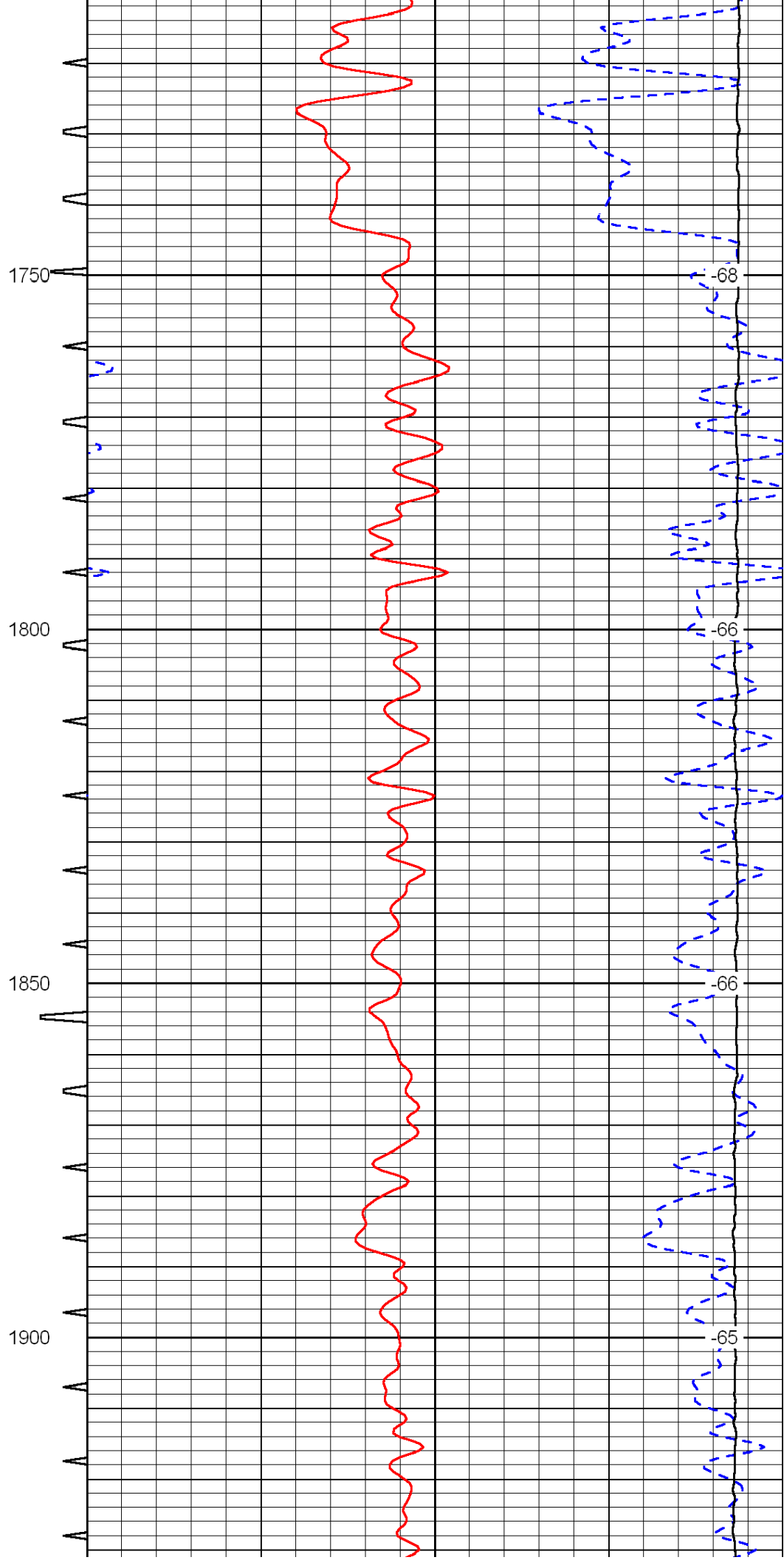
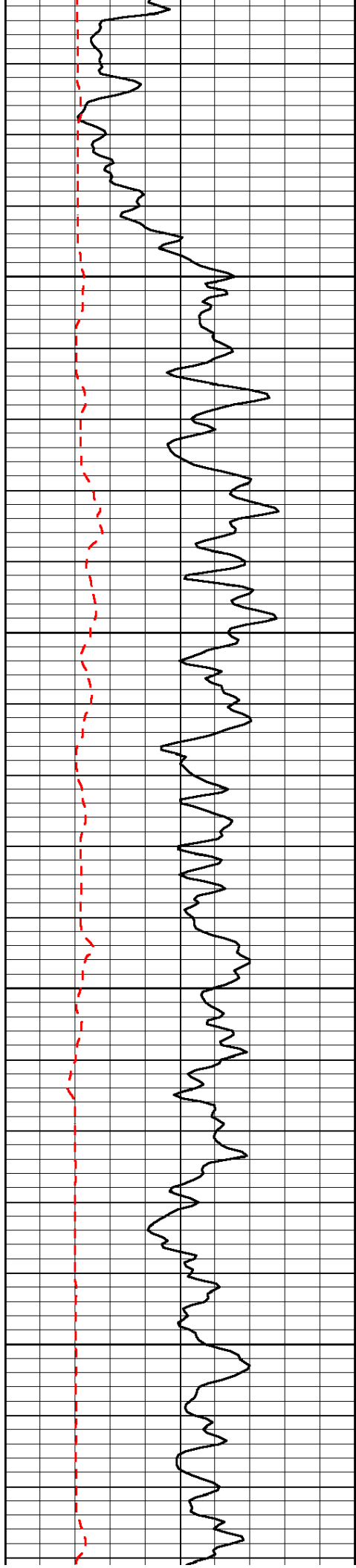


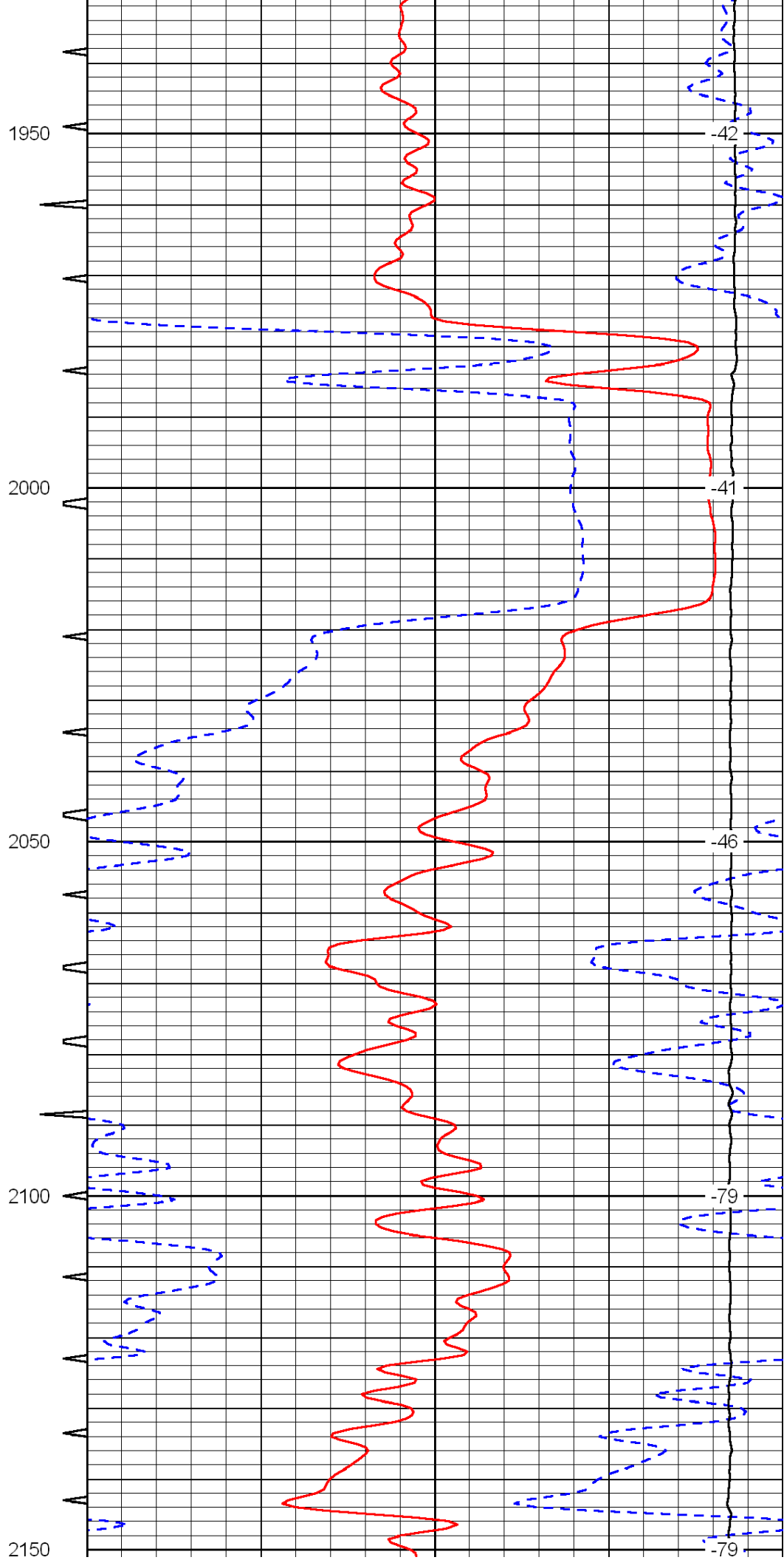
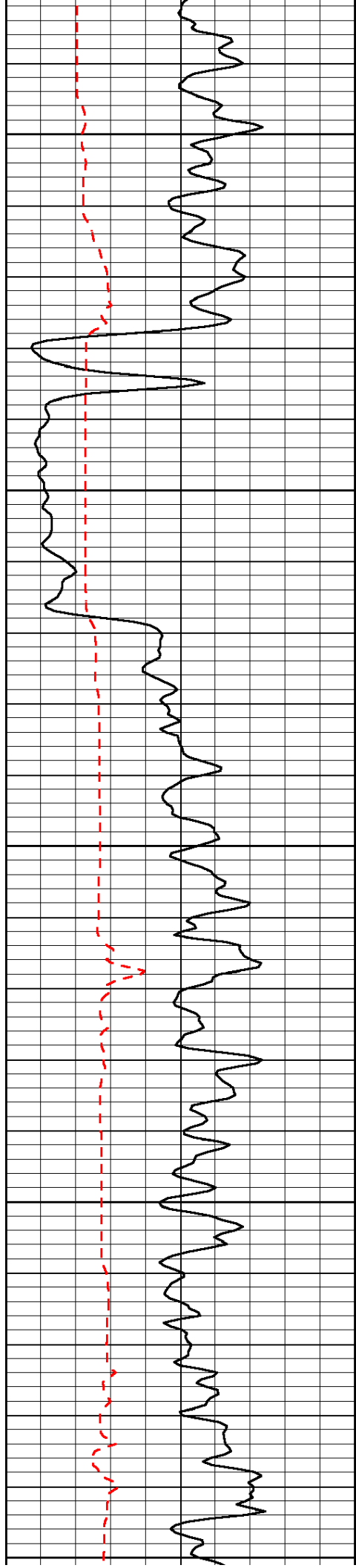


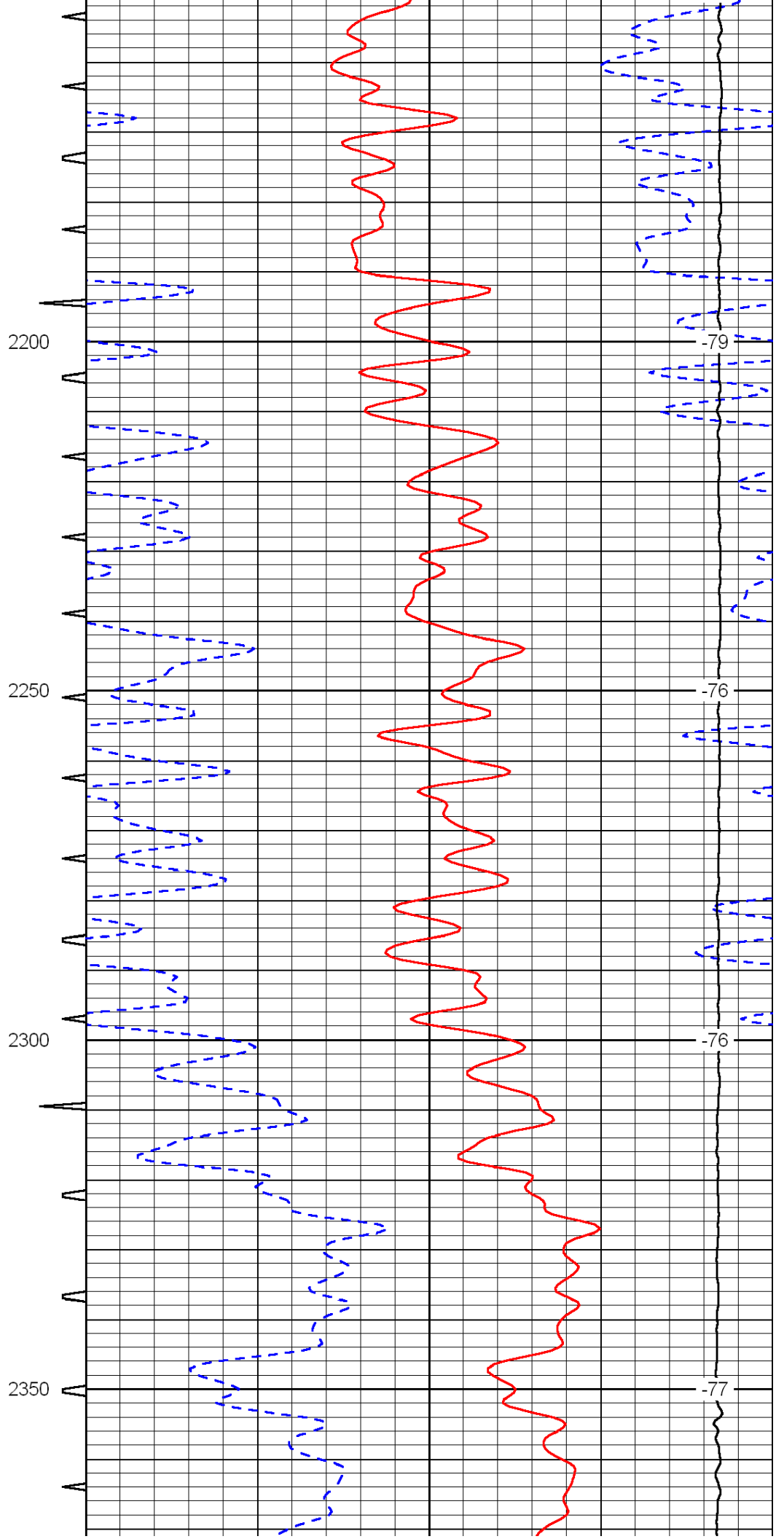
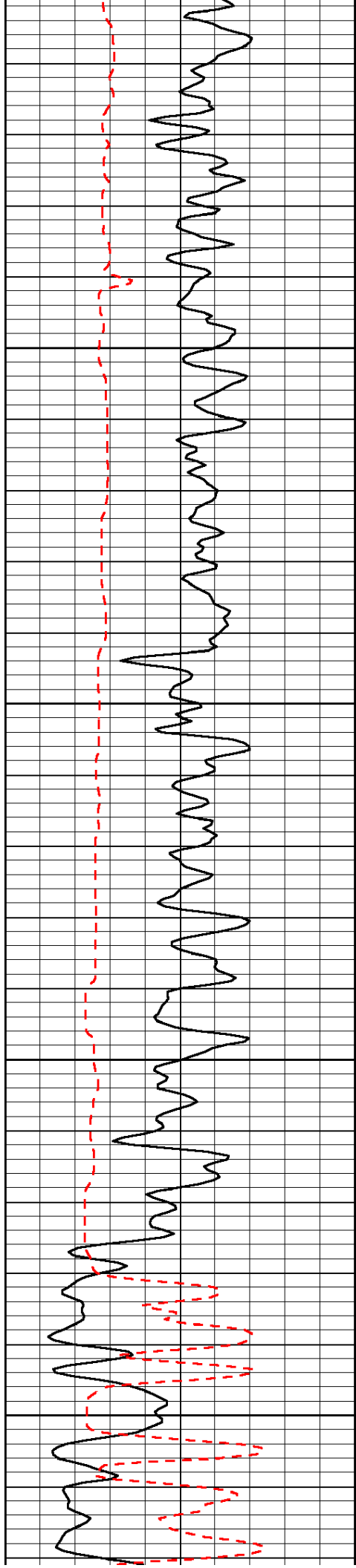


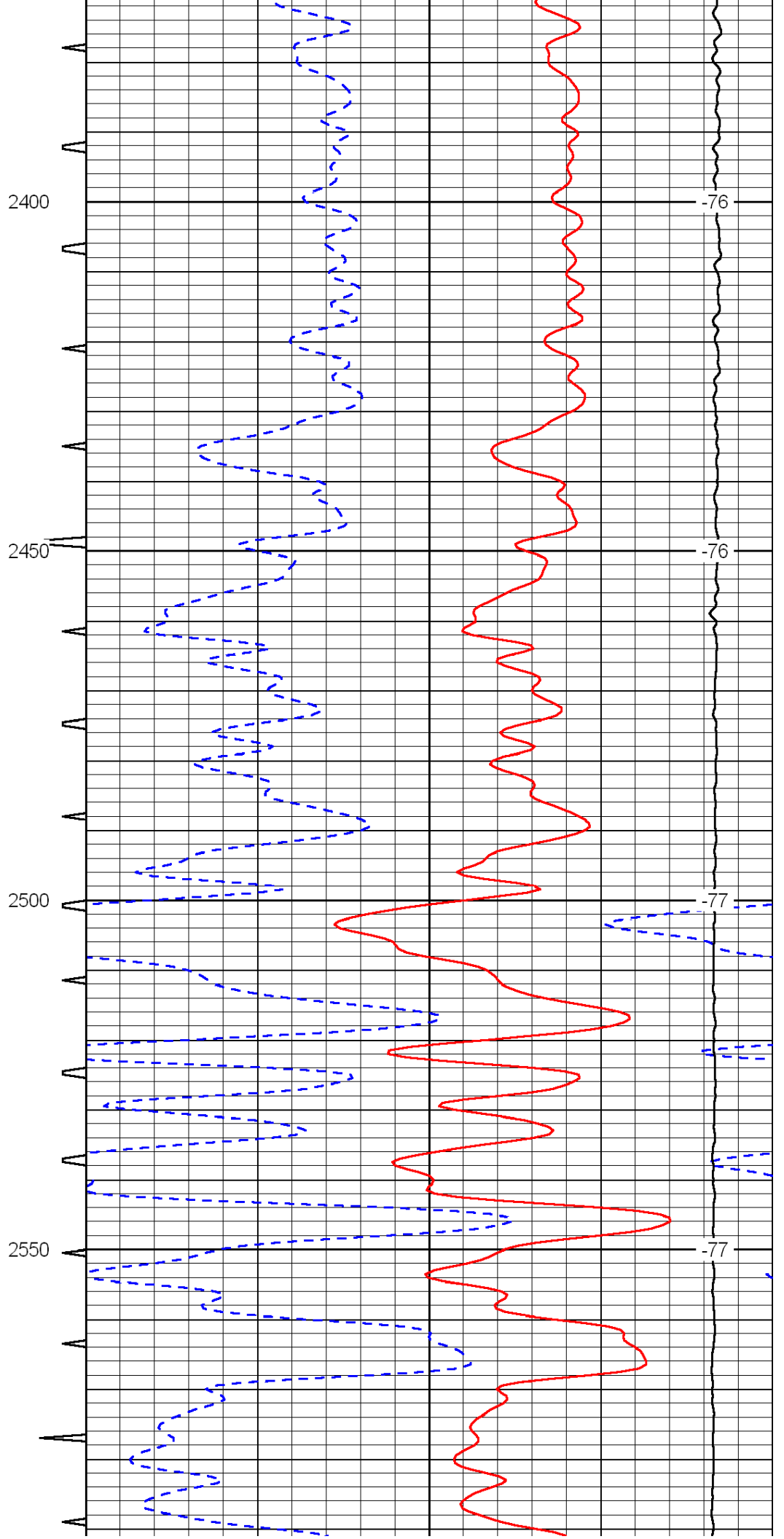
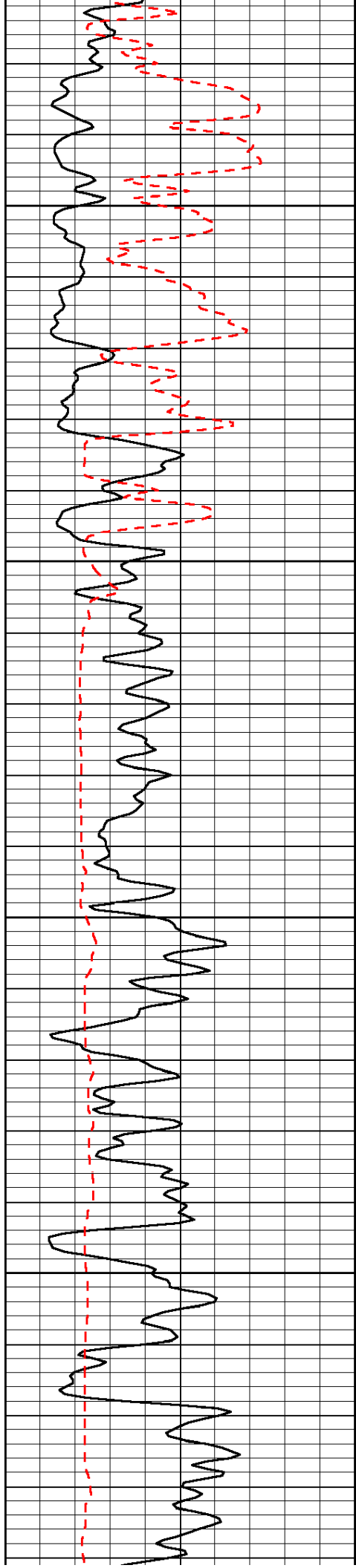


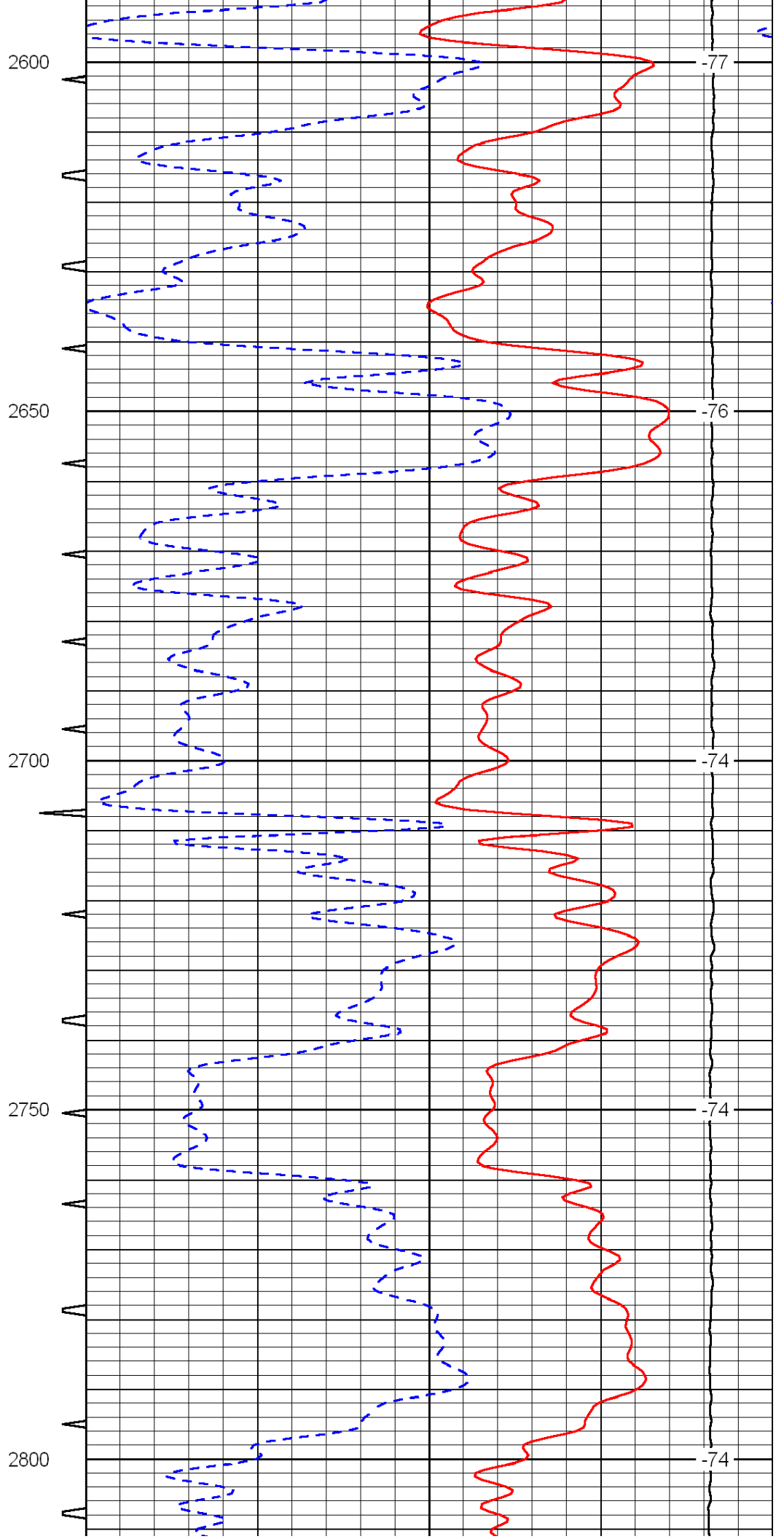
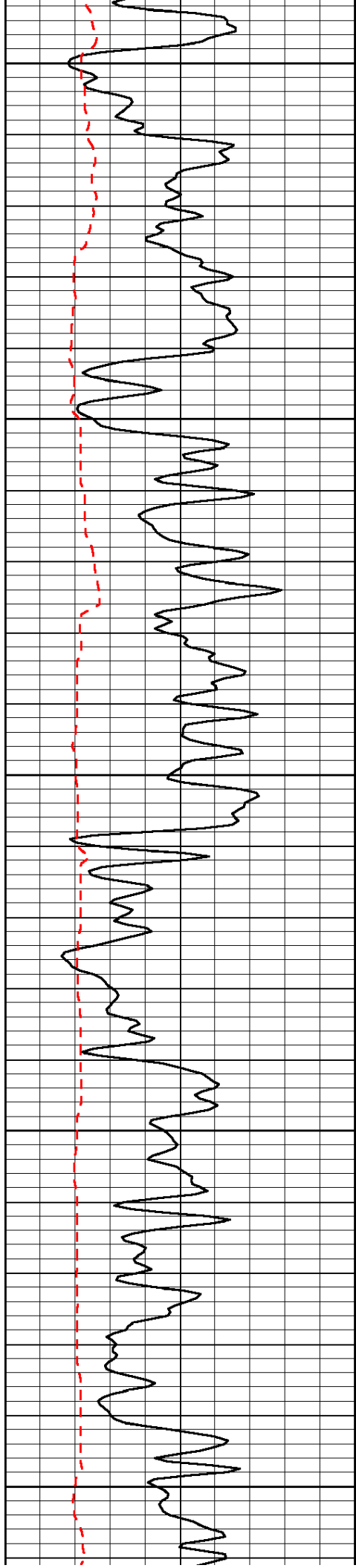


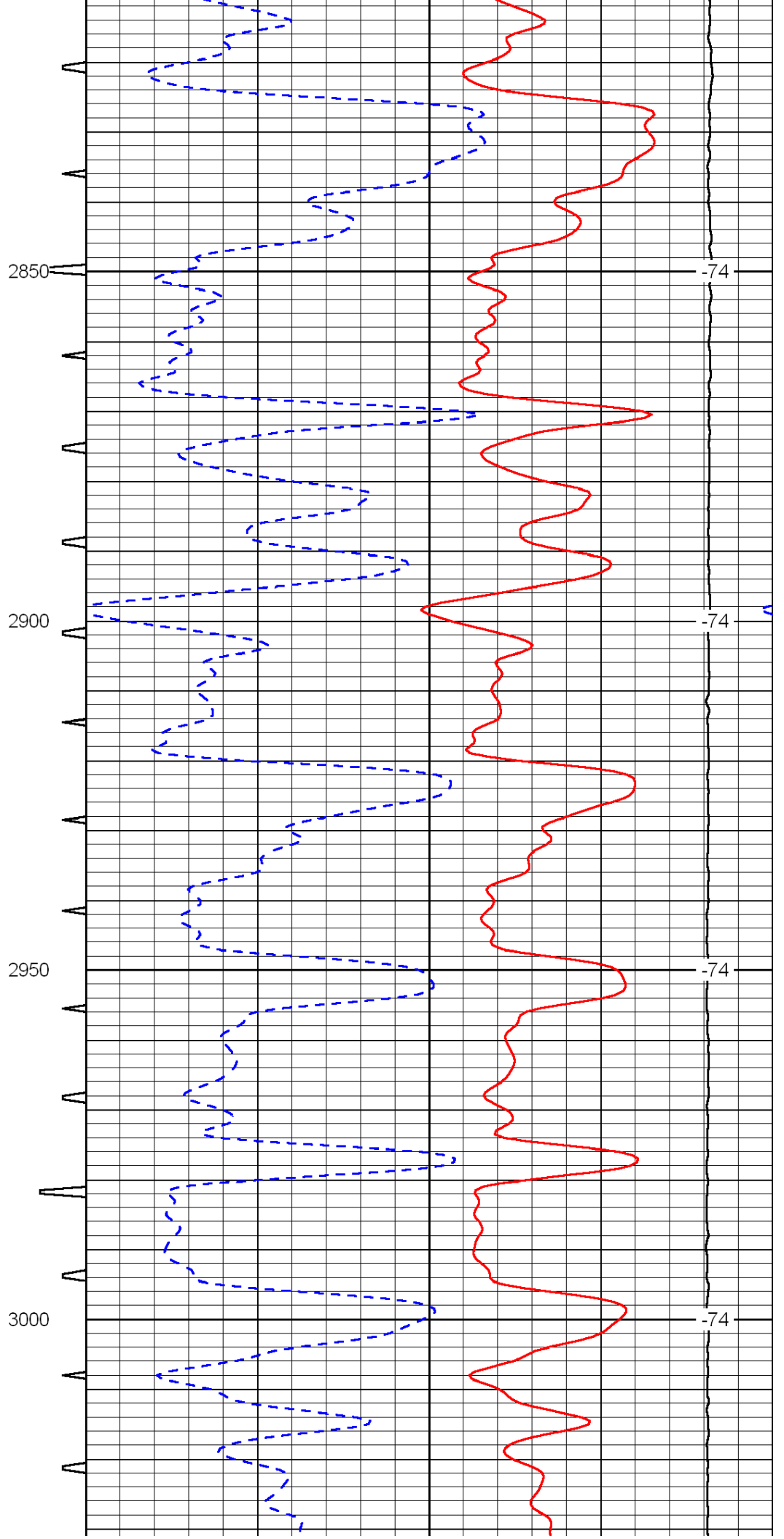
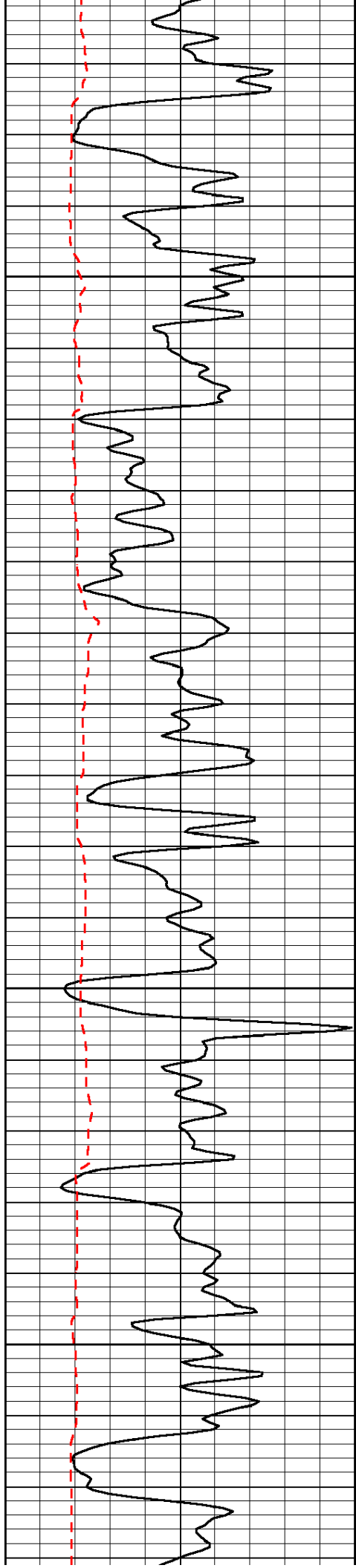


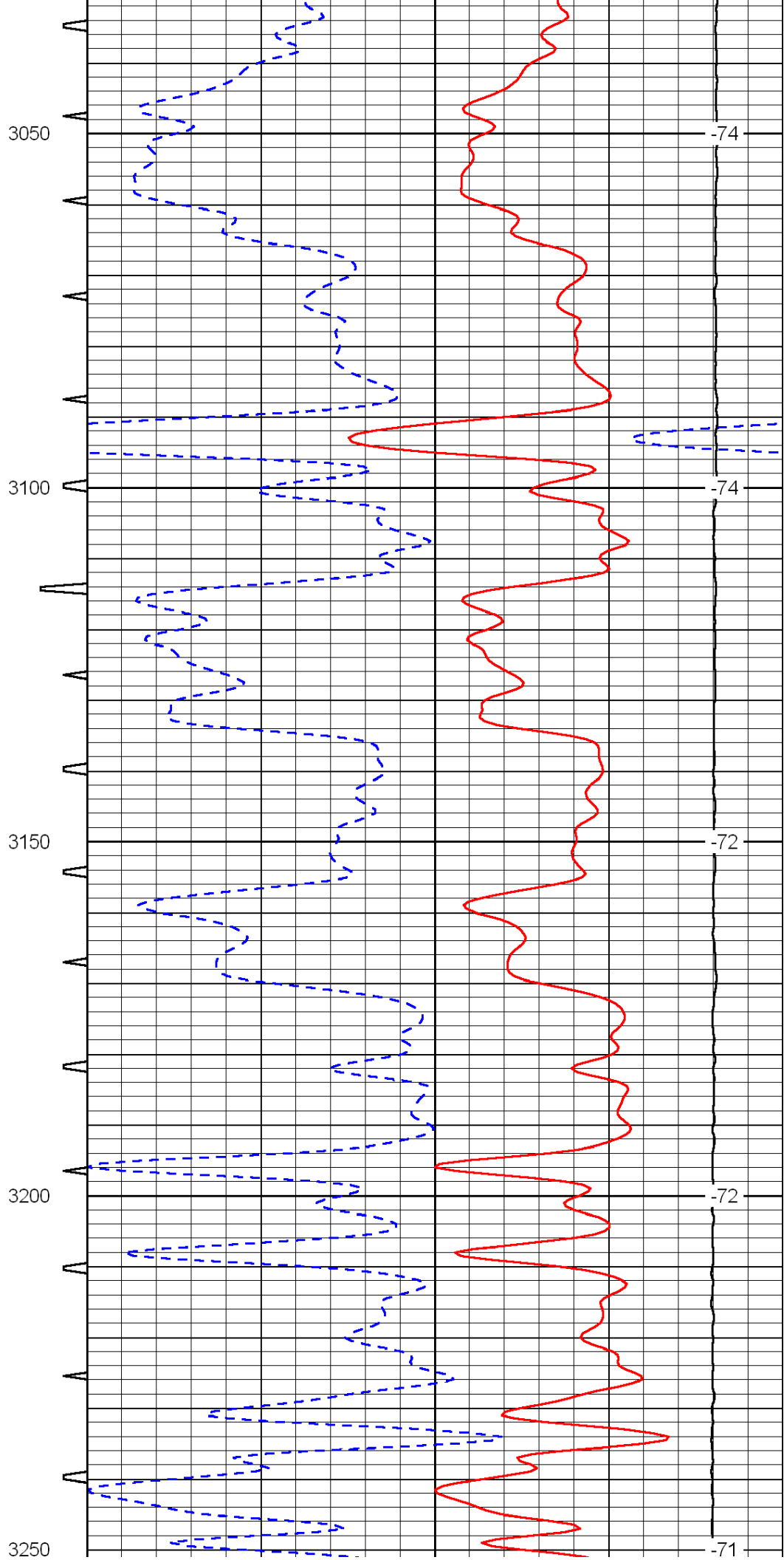
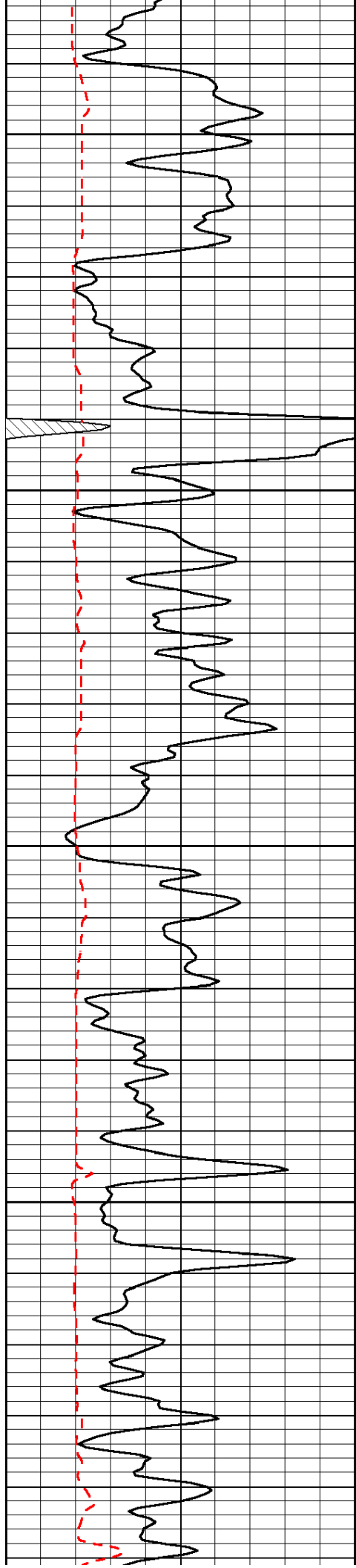


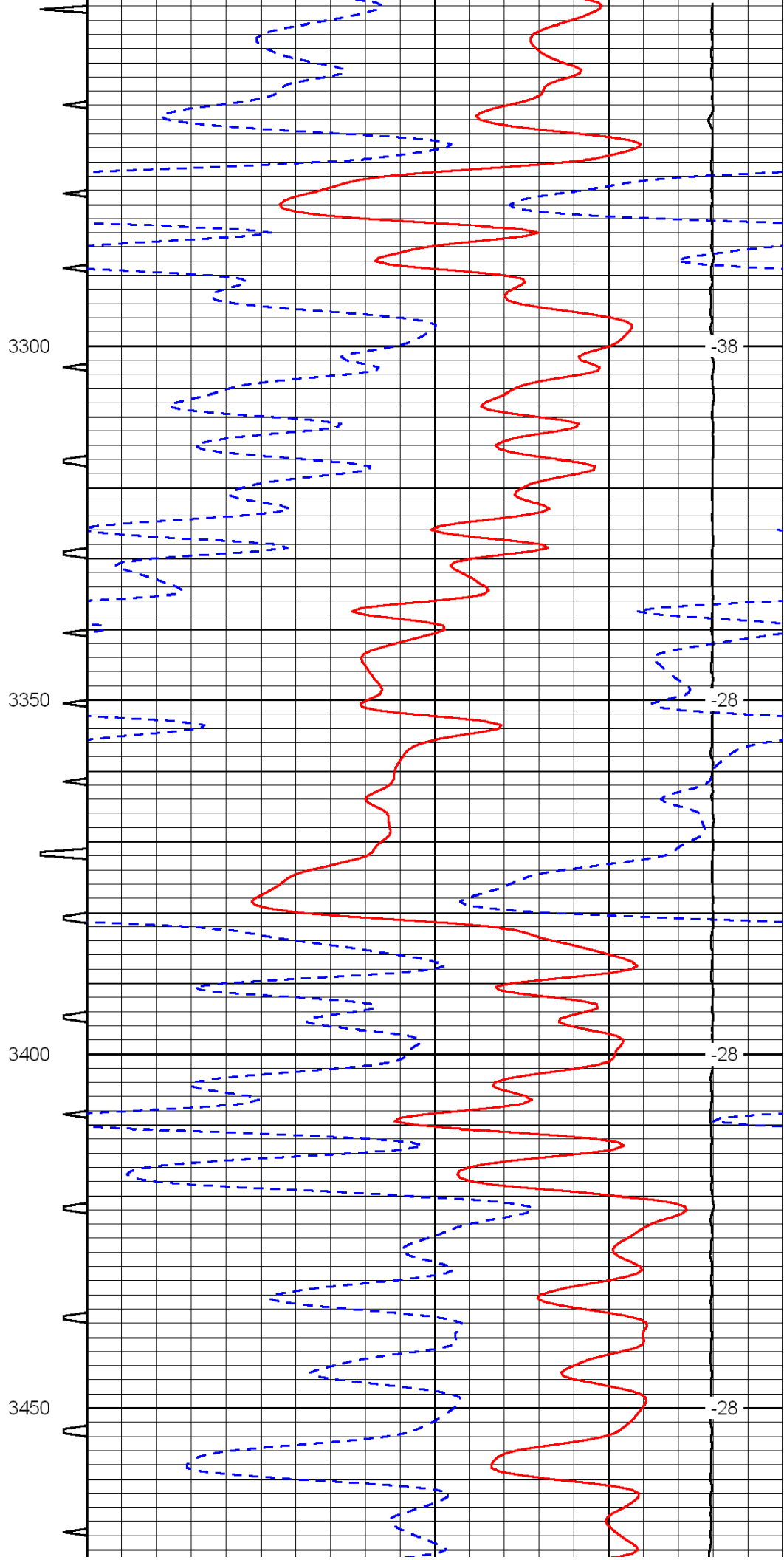
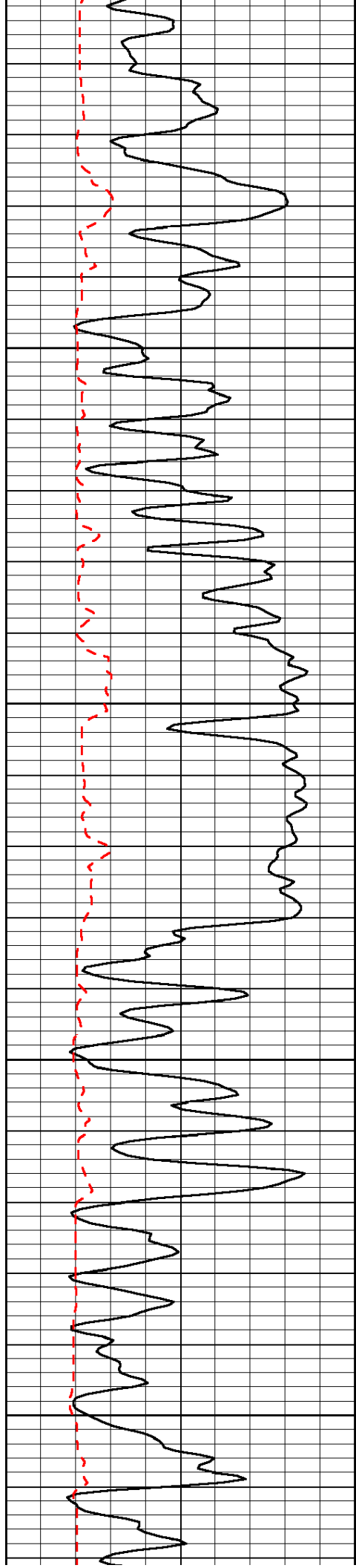


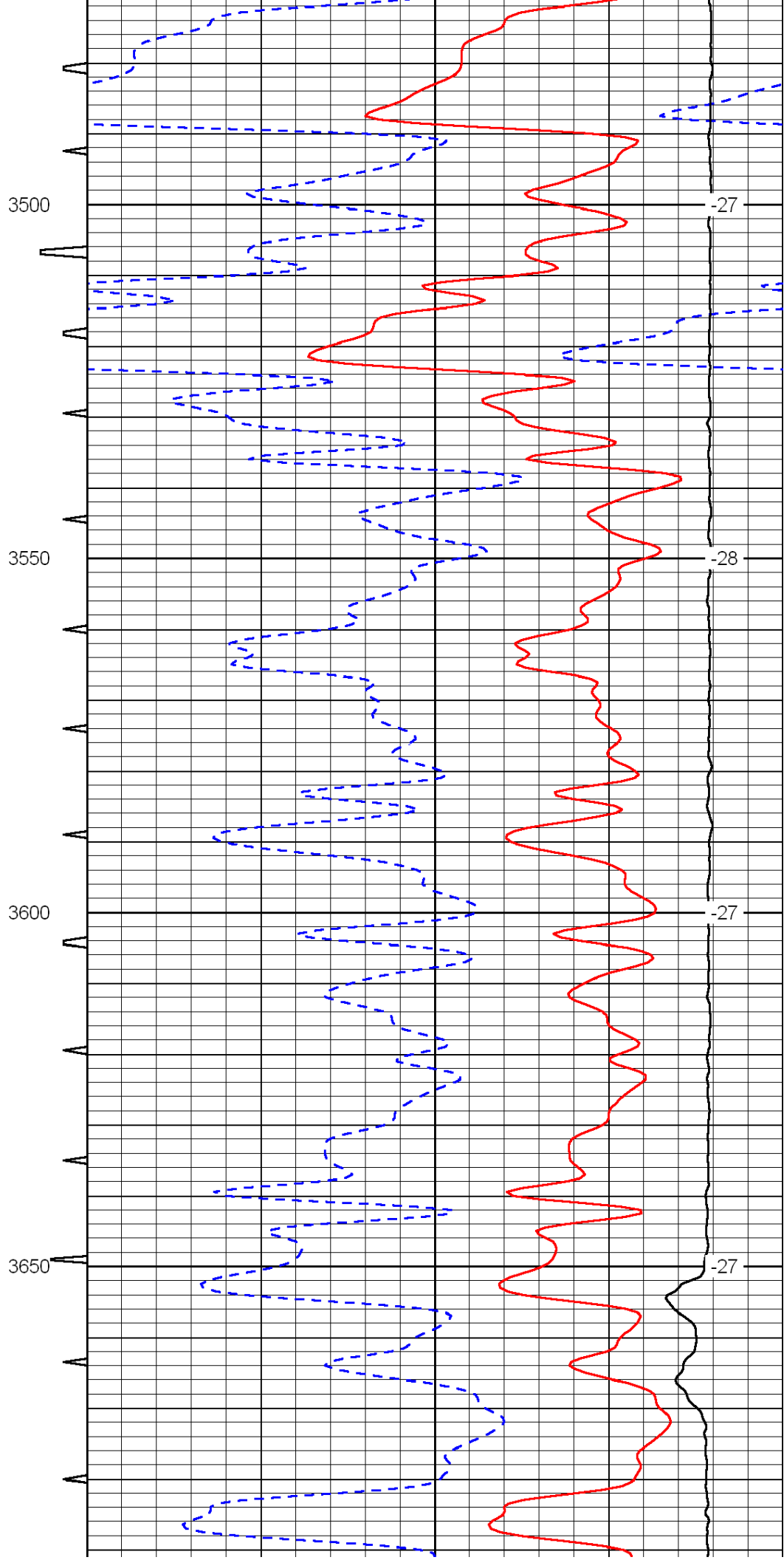
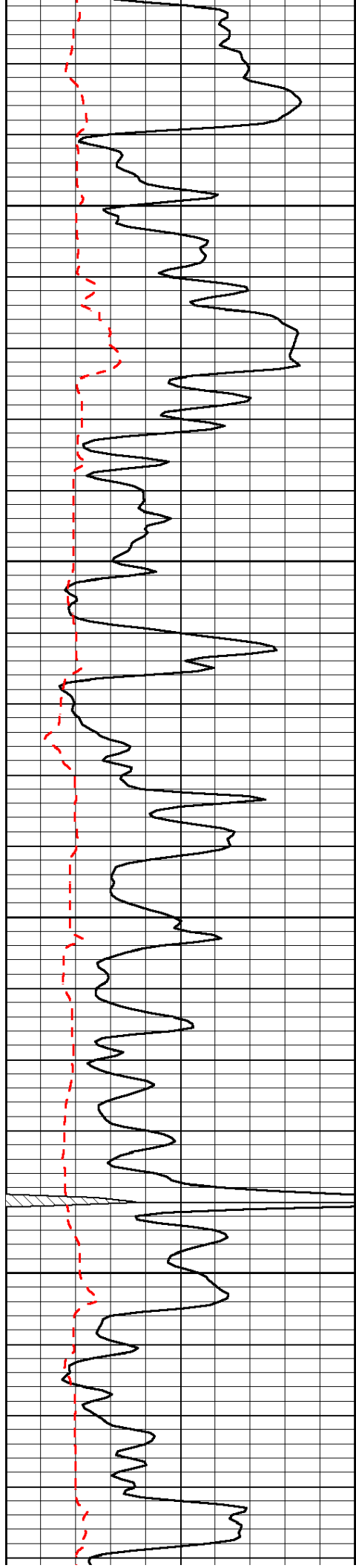


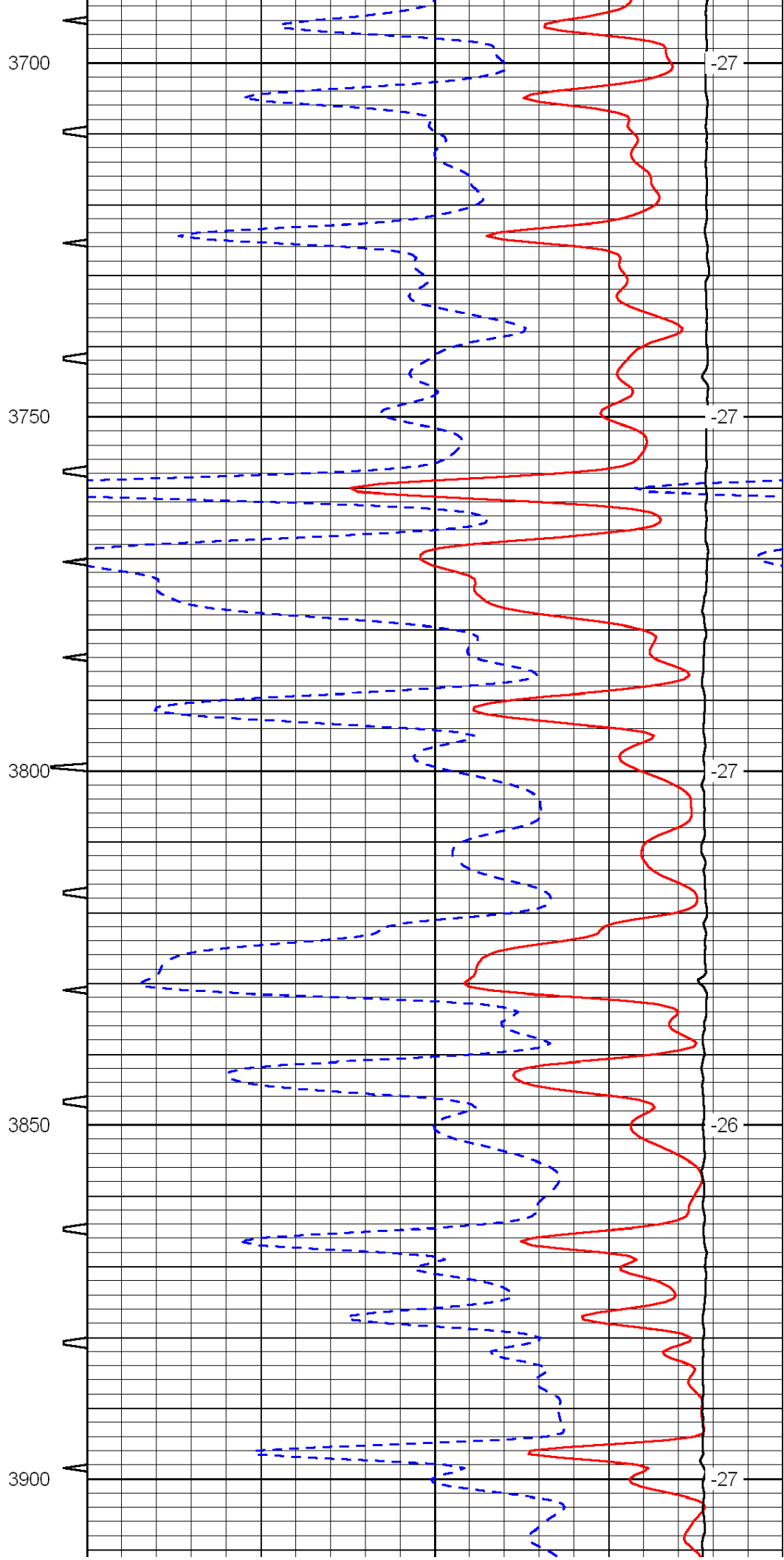
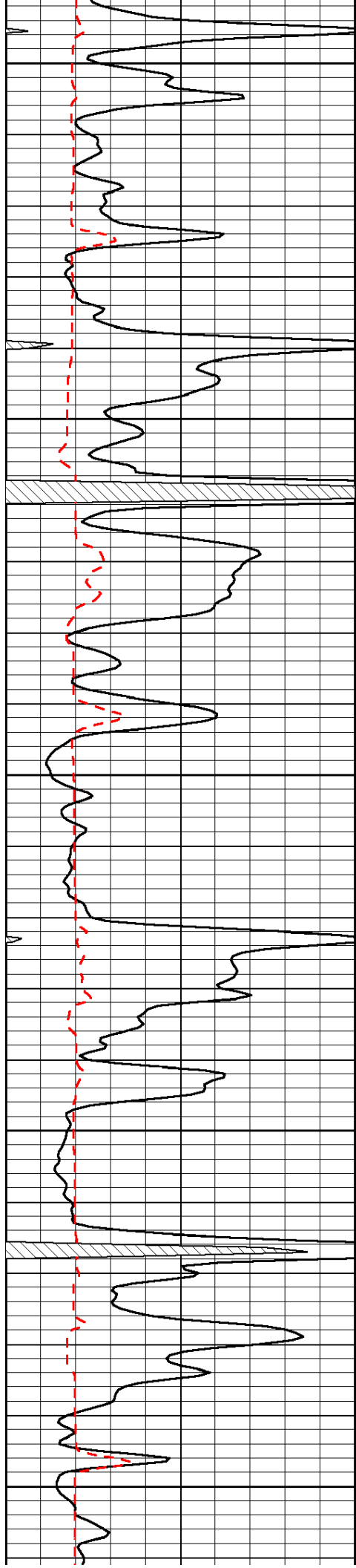


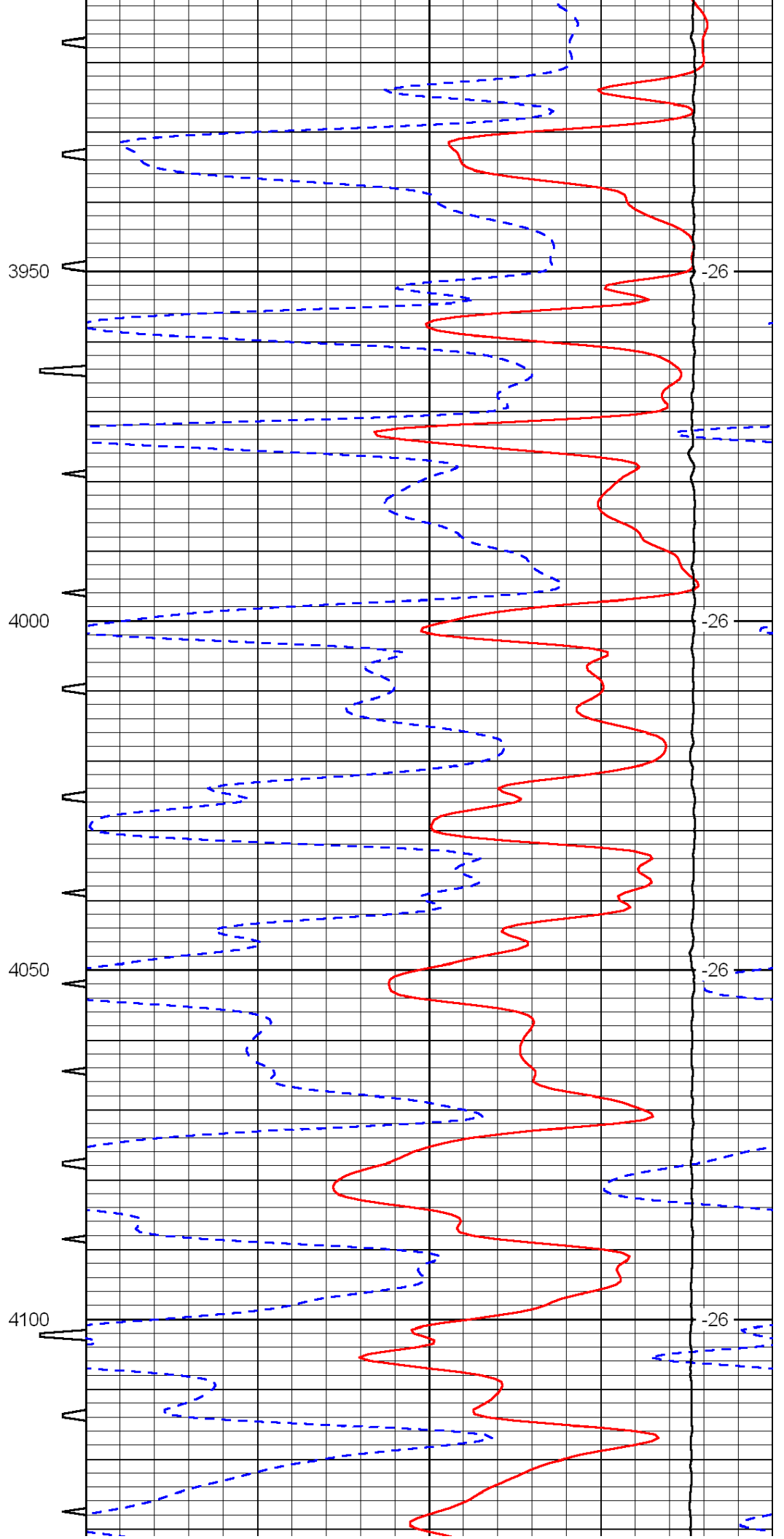
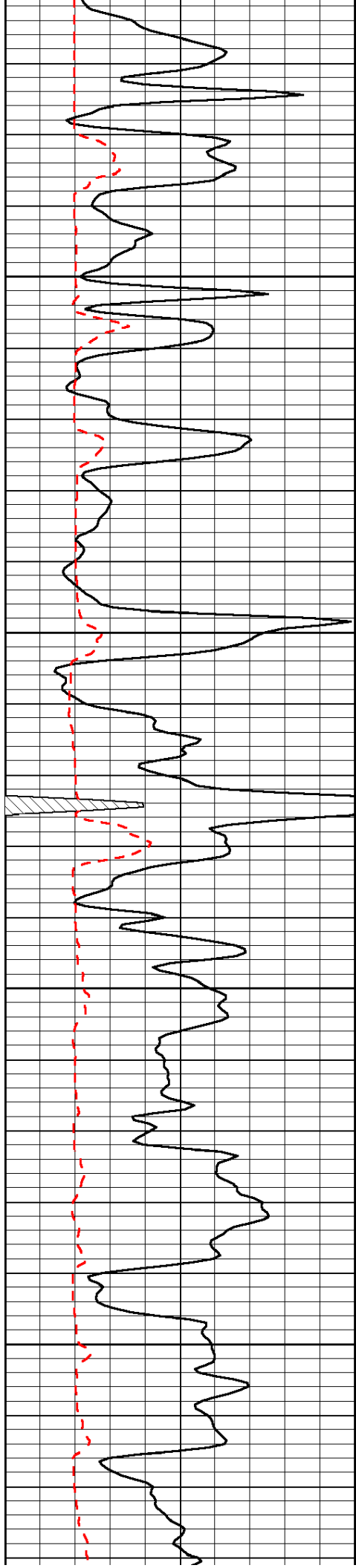


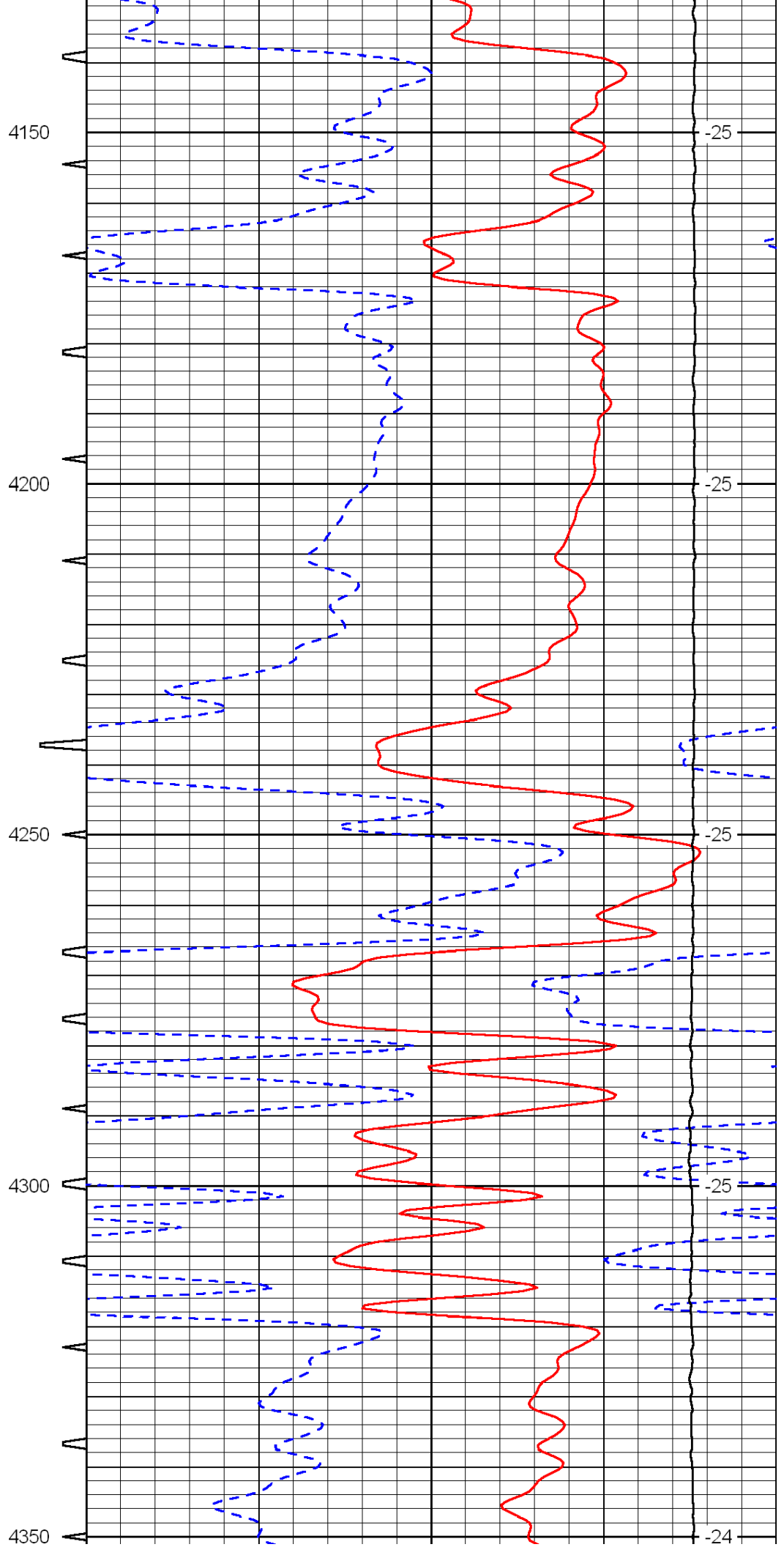
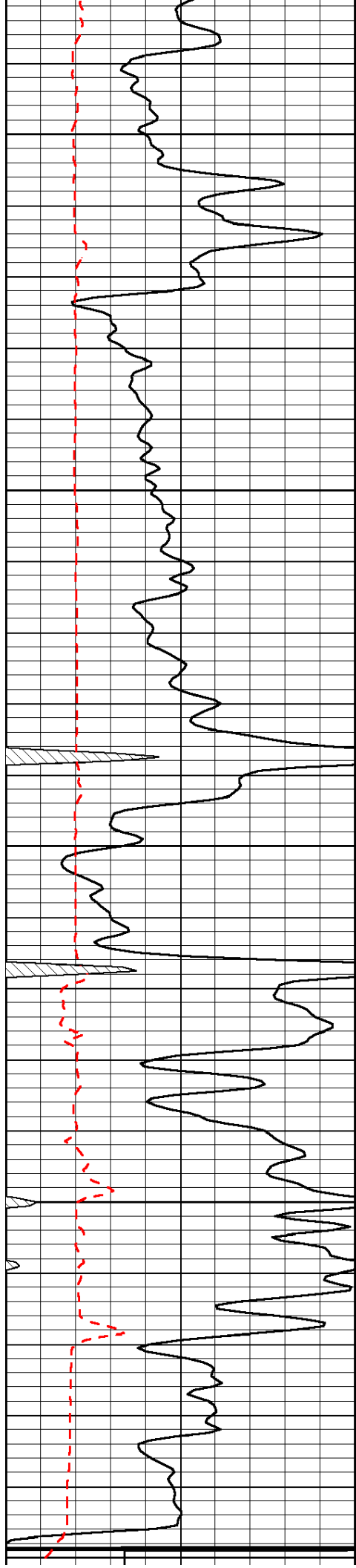


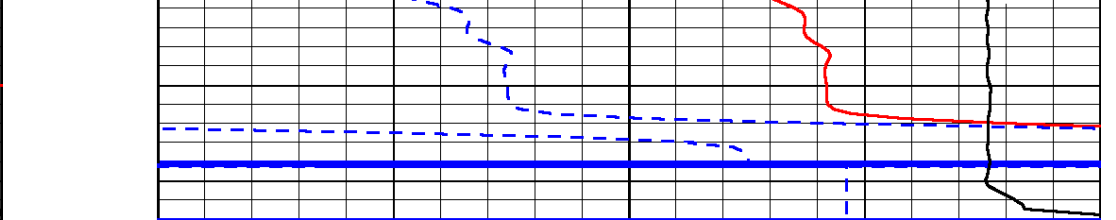
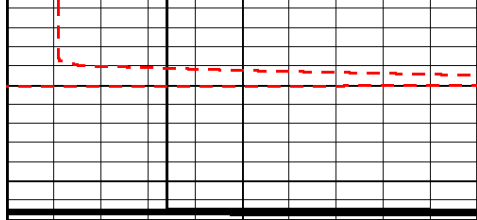












| | | | | | | |
|-----|----------------|-----|-----------|-------|----------------------|------|
| 0 | Gamma Ray | 150 | Sonic Int | 140 | Delta Time (usec/ft) | 40 |
| 150 | Gamma Ray | 300 | 5 | 0 | SPOR | -10 |
| 6 | Caliper (GAPI) | 16 | | 15000 | LTEN (lb) | 0 |
| | | | | | | LSPD |