



Dual Compensated
Porosity Log

DIGITAL LOG (785) 625-3858

API No. 15-195-22,658-00-00

Company **Murfin Drilling Co., Inc.**
 Well **Wanda No. 1-22**
 Field **Wildcat**
 County **Trego** State **Kansas**

Location **950' FSL & 370' FWL**

Sec: **22** Twp: **12 S** Rge: **24 W**

Other Services
DIL
MEI/BHCS

Permanent Datum **Ground Level** Elevation **2425**
 Log Measured From **Kelly Bushing** 11 Ft. Above Perm. Datum
 Drilling Measured From **Kelly Bushing**

K.B. 2436
D.F. 2425
G.L. 2425

Date **4/29/2010**

Run Number **One**

Type Log **CNL / CDL**

Depth Driller **4370**

Depth Logger **4370**

Bottom Logged Interval **4349**

Top Logged Interval **3400**

Type Fluid In Hole **Chemical**

Salinity, PPM CL **4,200**

Density **9.2**

Level **Full**

Max. Rec. Temp. F **122**

Operating Rig Time **5 Hours**

Equipment -- Location **007 Hays**

Recorded By **K. Bange**

Witnessed By **Bob Stolzle**

| Borehole Record | | | | Casing Record | | | |
|-----------------|-------|------|------|---------------|------|------|-----|
| Run No. | Bit | From | To | Size | Wgt. | From | To |
| 1 | 12.25 | 00 | 225 | 8.625 | 24# | 00 | 225 |
| 2 | 7.875 | 225 | 4370 | | | | |
| | | | | | | | |
| | | | | | | | |
| | | | | | | | |
| | | | | | | | |
| | | | | | | | |
| | | | | | | | |
| | | | | | | | |

<<< Fold Here >>>

All interpretations are opinions based on inferences from electrical or other measurements and we cannot and do not guarantee the accuracy or correctness of any interpretation, and we shall not, except in the case of gross or willful negligence on our part, be liable or responsible for any loss, costs, damages, or expenses incurred or sustained by anyone resulting from any interpretation made by any of our officers, agents or employees. These interpretations are also subject to our general terms and conditions set out in our current Price Schedule.

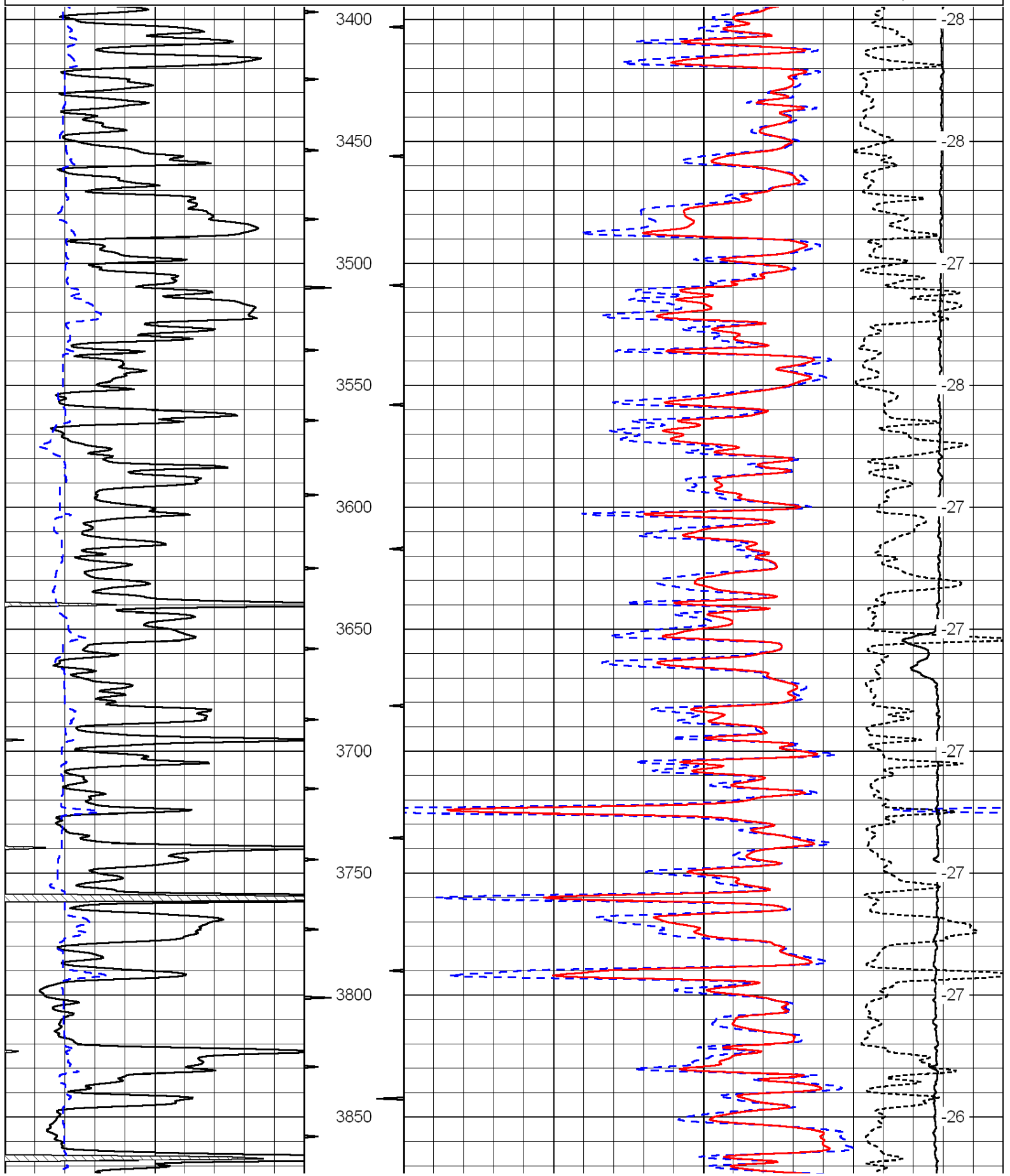
Comments

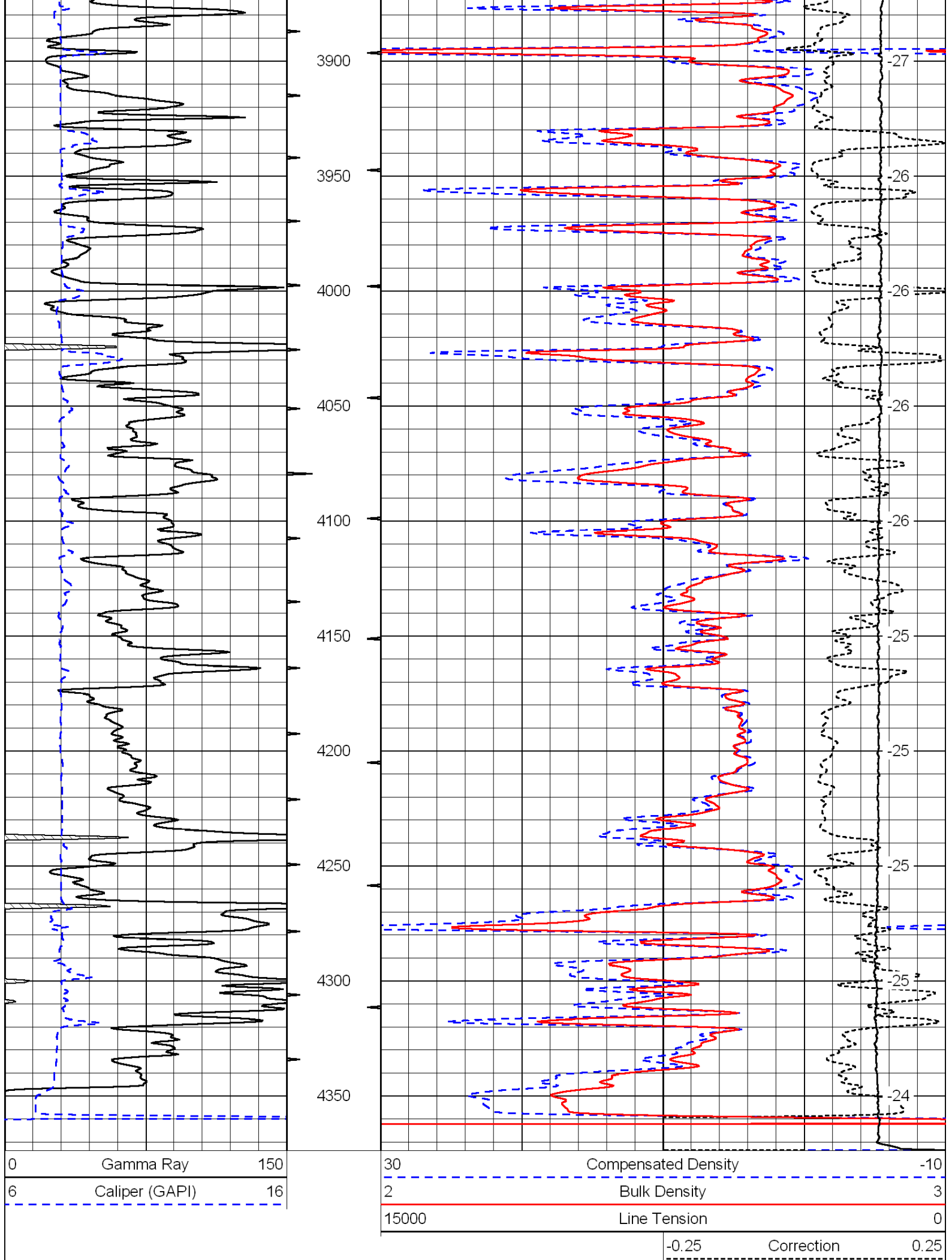
Thank you for using Log-Tech, Inc.
 (785) 625-3858

I-70 W to Exit 127 at Wakeeney, 1 S to Golf Course, 4 W to 200 rd, 1/2 S, E into

| | | |
|---|----------------|-----|
| 0 | Gamma Ray | 150 |
| 6 | Caliper (GAPI) | 16 |

| | | |
|-------|---------------------|------|
| 30 | Compensated Density | -10 |
| 2 | Bulk Density | 3 |
| 15000 | Line Tension | 0 |
| -0.25 | Correction | 0.25 |
| LSPD | | |





| | | |
|---|----------------|-----|
| 0 | Gamma Ray | 150 |
| 6 | Caliper (GAPI) | 16 |

| | | |
|-------|---------------------|------|
| 30 | Compensated Density | -10 |
| 2 | Bulk Density | 3 |
| 15000 | Line Tension | 0 |
| -0.25 | Correction | 0.25 |

Database File: c:\warrior\data\murfin_wanda no. 1-22\murfinhd.db
Dataset Pathname: dil/murfstack
Presentation Format: cndlspec
Dataset Creation: Thu Apr 29 22:18:45 2010
Charted by: Depth in Feet scaled 1:240

| | | | | | | |
|---|----------------|-----|-------|---------------------------------|------------|------|
| 0 | Gamma Ray | 150 | 30 | Compensated Neutron (Limestone) | -10 | |
| 6 | Caliper (GAPI) | 16 | 30 | Compensated Density (2.71 ma) | -10 | |
| | | | 15000 | Line Tension | 0 | |
| | | | | -0.25 | Correction | 0.25 |

