



**Borehole Compensated  
Sonic Log**

**DIGITAL LOG (785) 625-3858**

API No.	15-065-23638-00-00		
Company	Murfin Drilling Company, Inc.		
Well	Seamac No. 1-19		
Field	Nora		
County	Graham		
State	Kansas		
Location	1960' FNL & 750' FWL		
Sec: 19	Twp: 10 S	Rge: 21 W	Other Services CNL/CDL MEL/DIL
Permanent Datum	Ground Level	Elevation 2256	Elevation
Log Measured From	Kelly Bushing	5 Ft. Above Perm. Datum	K.B. 2261
Drilling Measured From	Kelly Bushing		D.F. G.L. 2256

Date	4/26/2010
Run Number	Two
Type Log	BHC Sonic
Depth Driller	3980
Depth Logger	3979
Bottom Logged Interval	3968
Top Logged Interval	200
Type Fluid In Hole	Chemical
Salinity, PPM CL	5000
Density	9.2
Level	Full
Max. Rec. Temp. F	116
Operating Rig Time	4 1/2 Hours
Equipment -- Location	15 Hays
Recorded By	B. Becker
Witnessed By	Paul Gunzelman

Borehole Record				Casing Record			
Run No.	Bit	From	To	Size	Wgt.	From	To
1	12.25	00	220	8.625	24#	00	220
2	7.875	220	3980				

<<< Fold Here >>>

All interpretations are opinions based on inferences from electrical or other measurements and we cannot and do not guarantee the accuracy or correctness of any interpretation, and we shall not, except in the case of gross or willful negligence on our part, be liable or responsible for any loss, costs, damages, or expenses incurred or sustained by anyone resulting from any interpretation made by any of our officers, agents or employees. These interpretations are also subject to our general terms and conditions set out in our current Price Schedule.

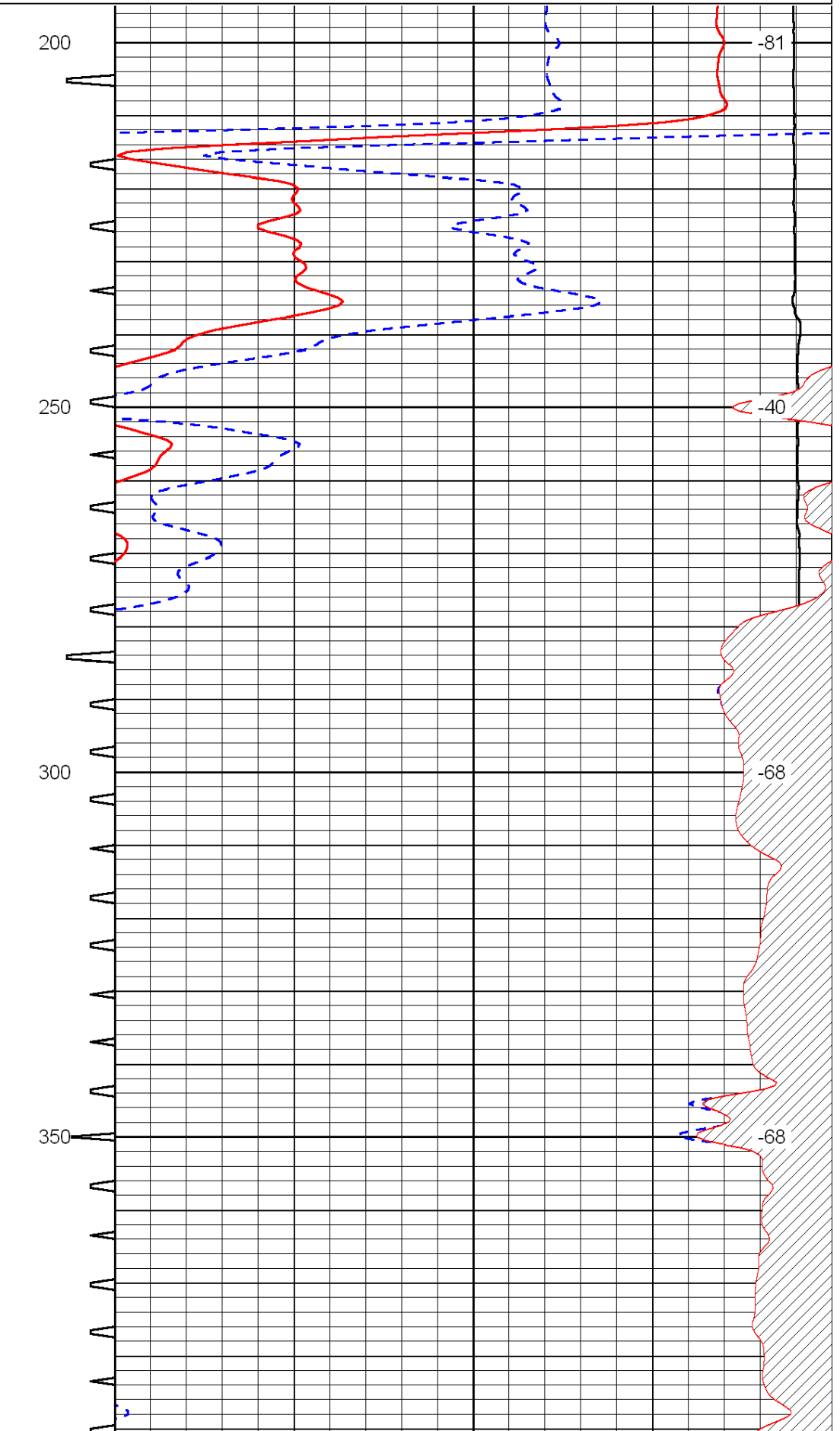
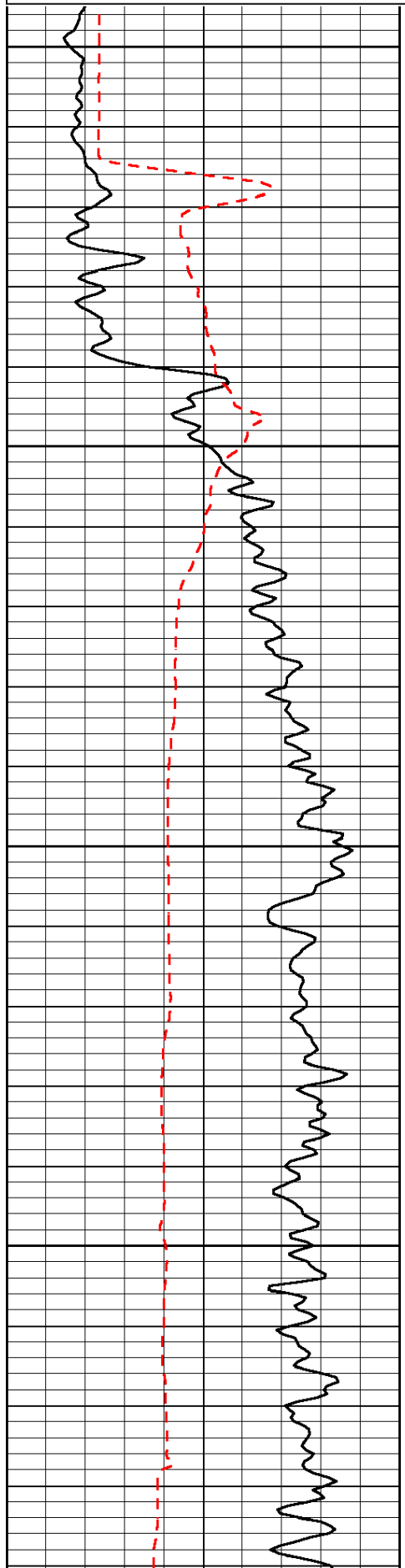
**Comments**

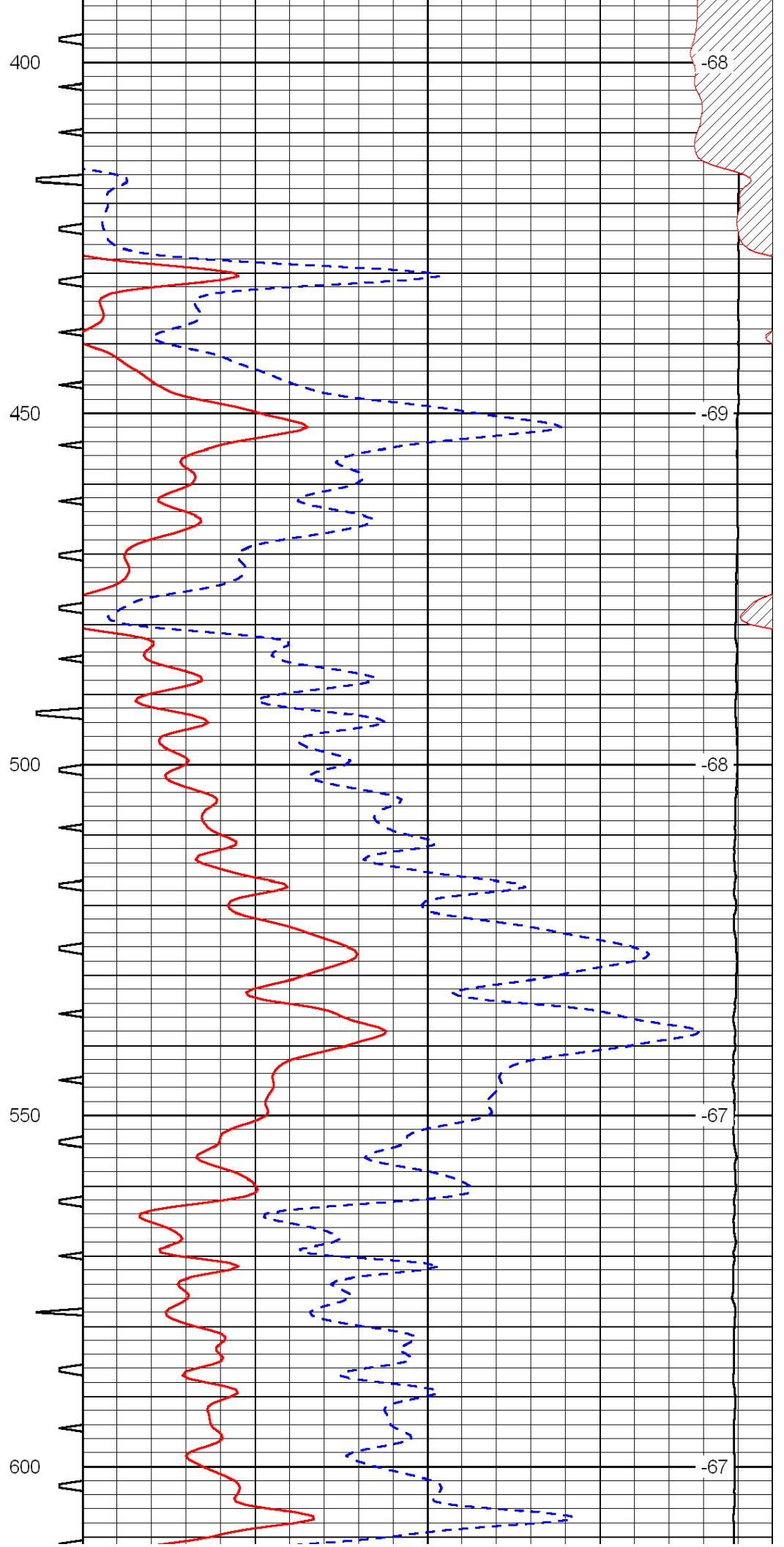
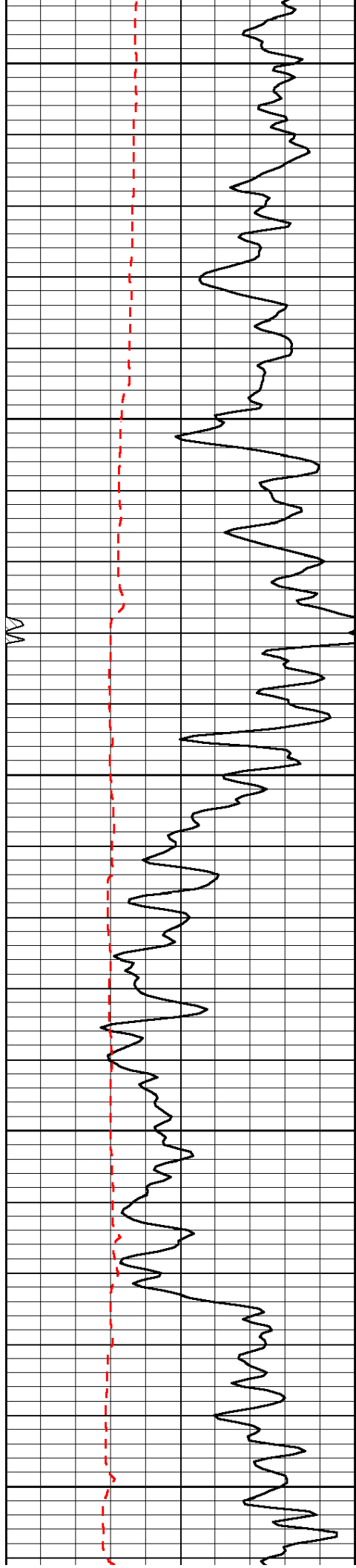
Thank you for using Log-Tech, Inc.  
 (785) 625-3858  
  
 Ellis, Ks; West on I-70 to Riga Rd;  
 North to Dead End; 2-3/4 West; 2 North;  
 1 West; 3/4 North; East Into

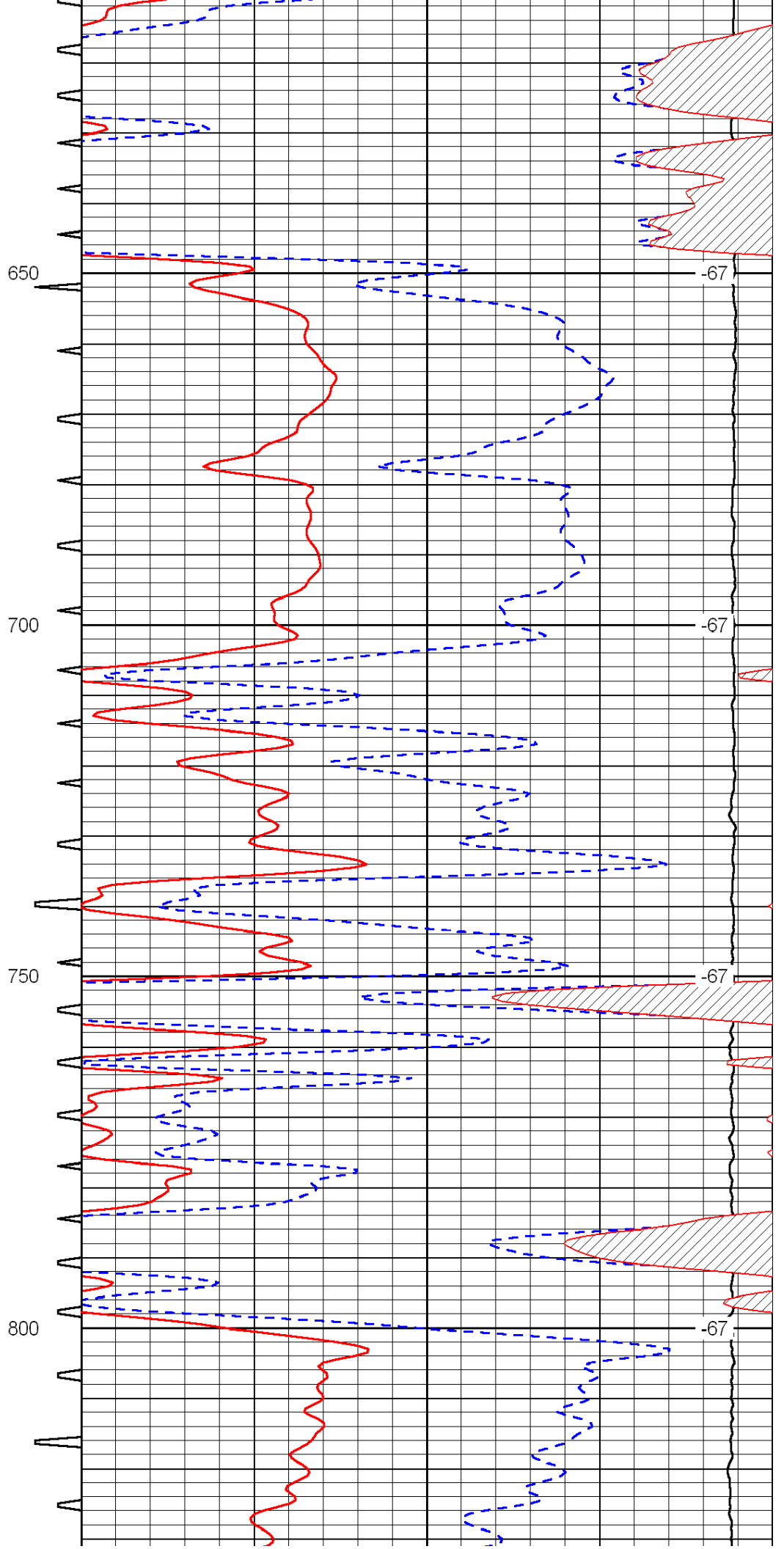
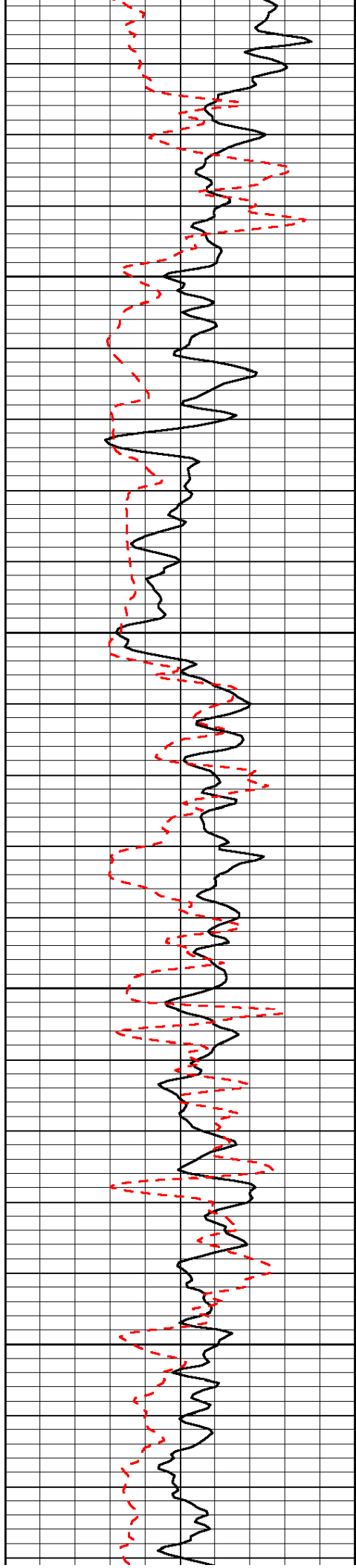
Database File: c:\warrior\data\murfin\_seamac #1-19\murfinhd.db  
 Dataset Pathname: DIL\murfstk  
 Presentation Format: sonic  
 Dataset Creation: Mon Apr 26 16:57:39 2010  
 Charted by: Depth in Feet scaled 1:240

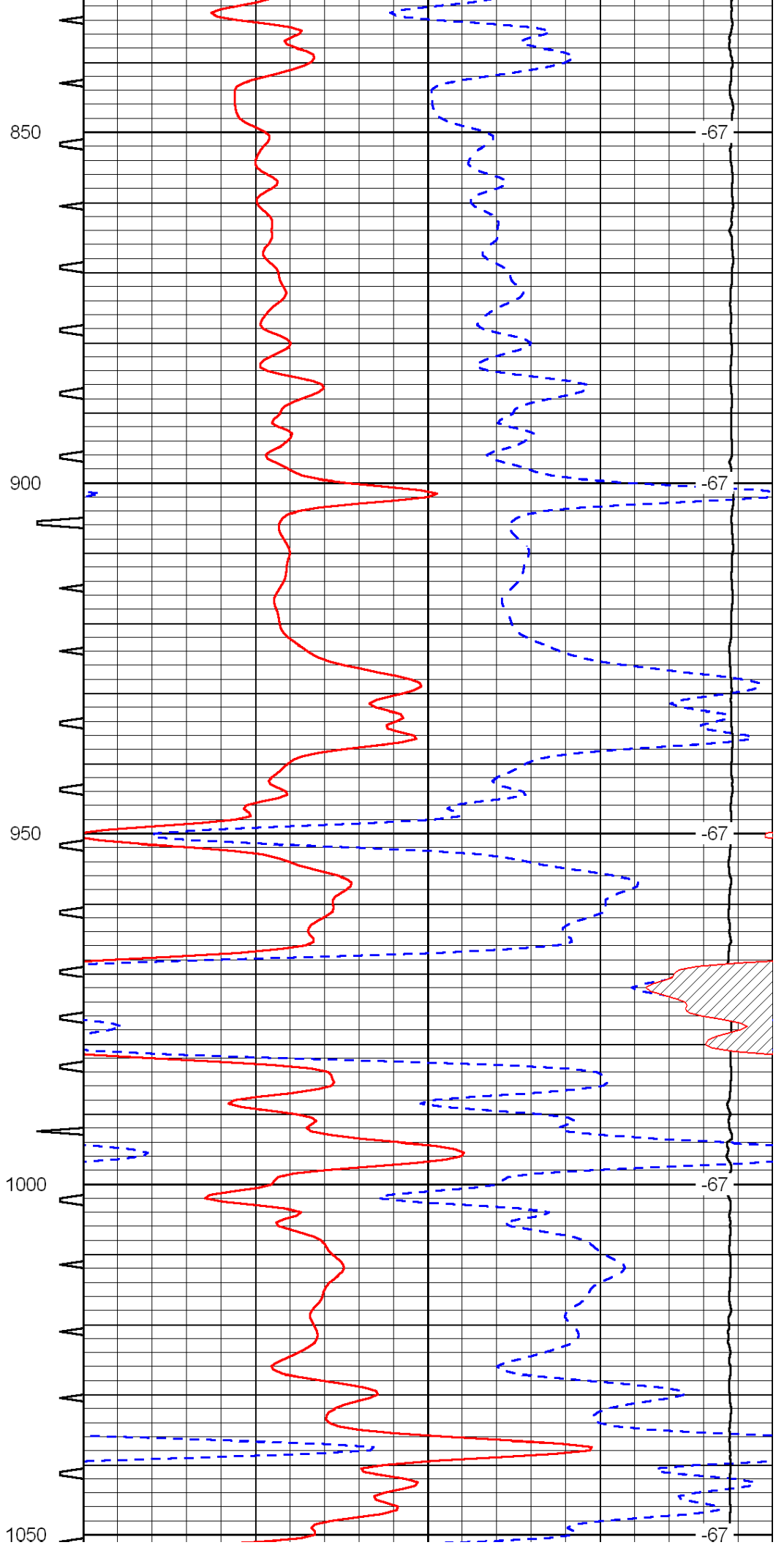
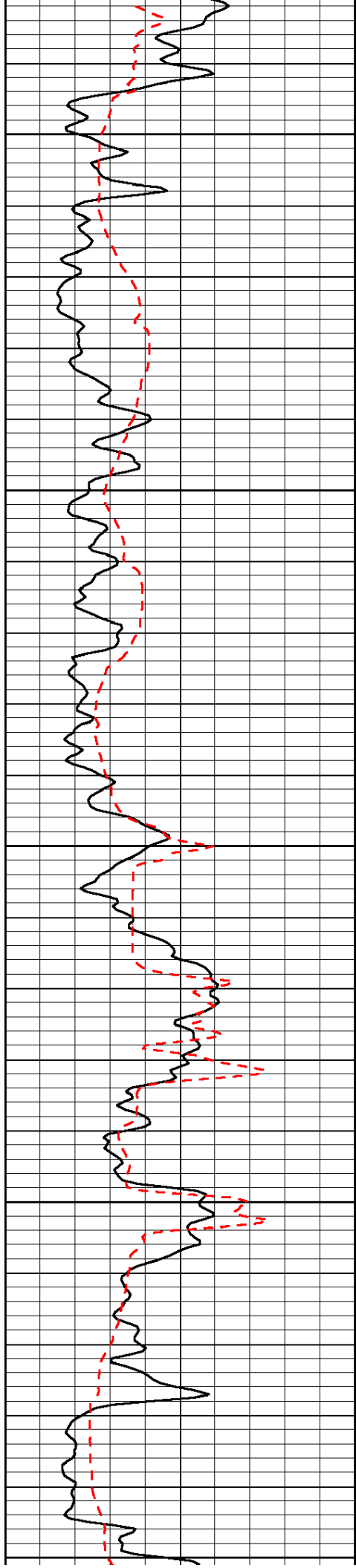
0	Gamma Ray	150	Sonic Int	140	Delta Time (usec/ft)	40
150	Gamma Ray	300	5	0	SPOR	-10
6	Caliper (GAPI)	16		15000	LTEN (lb)	0

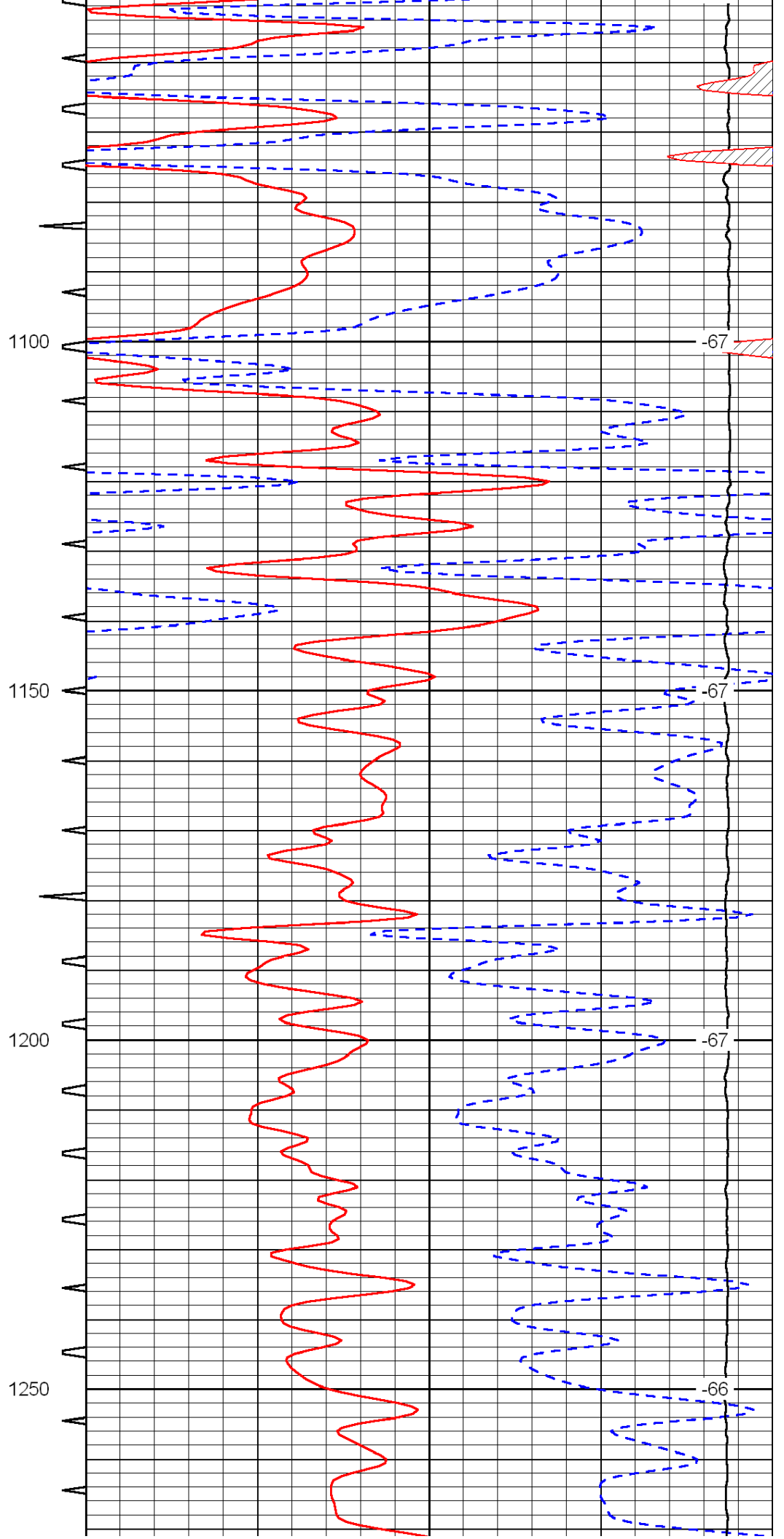
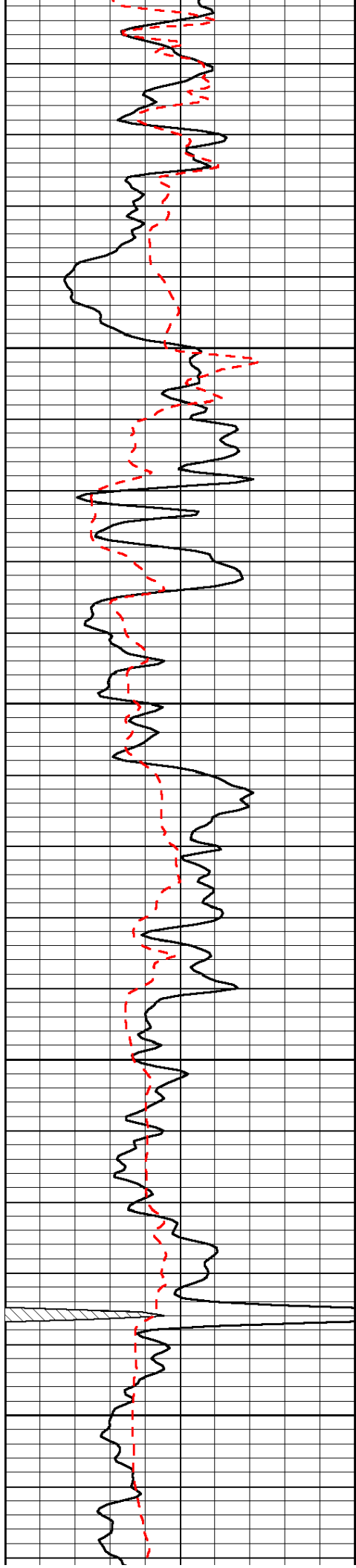
LSPD

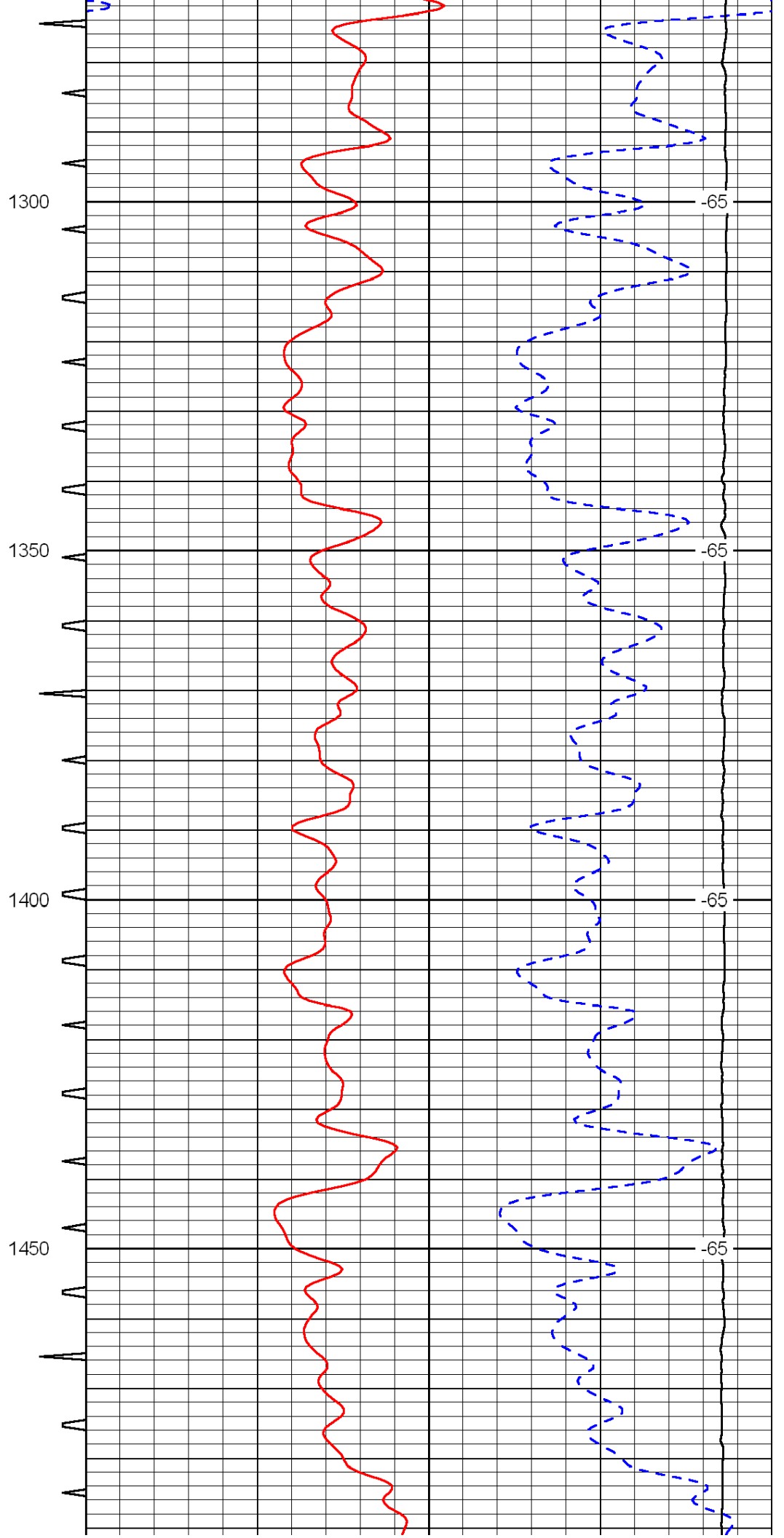
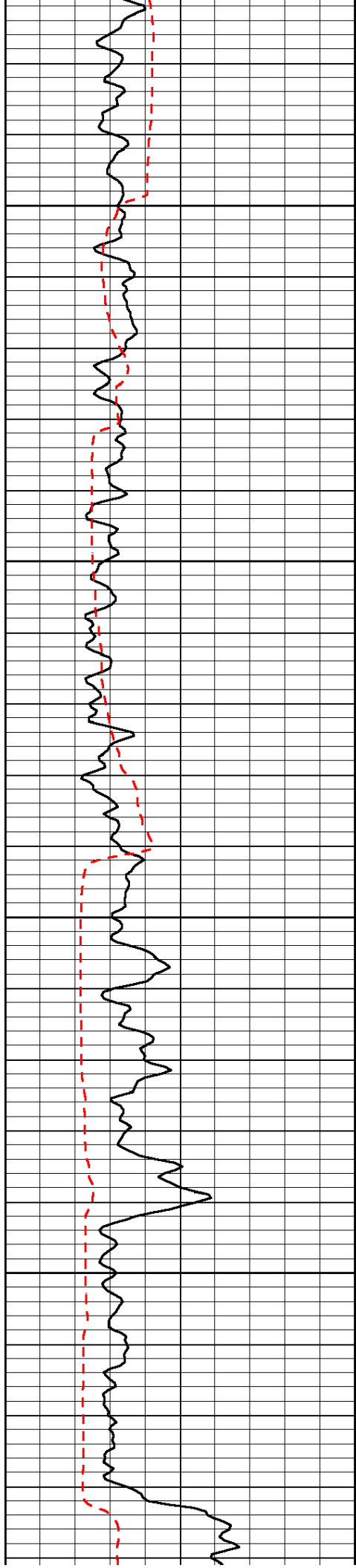


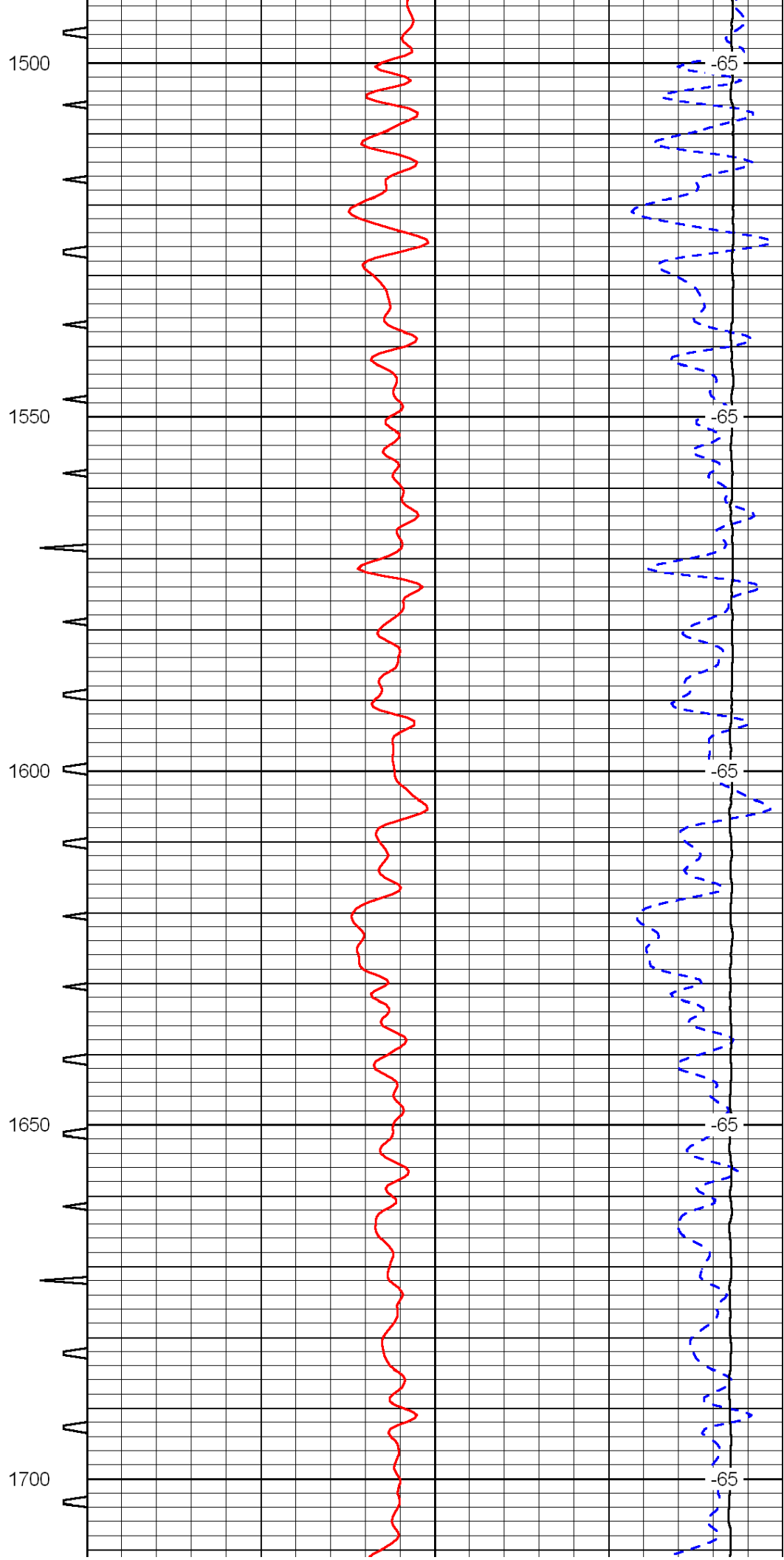
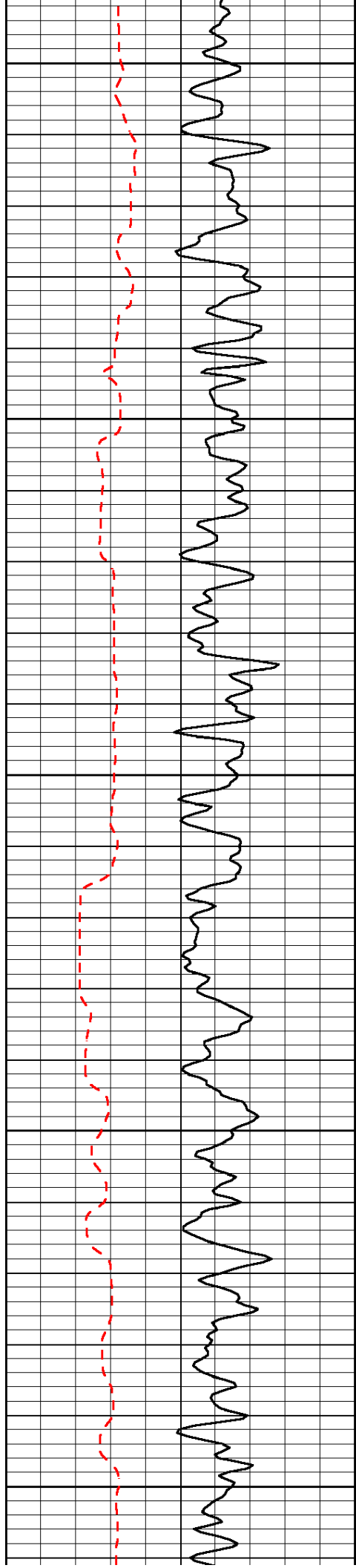


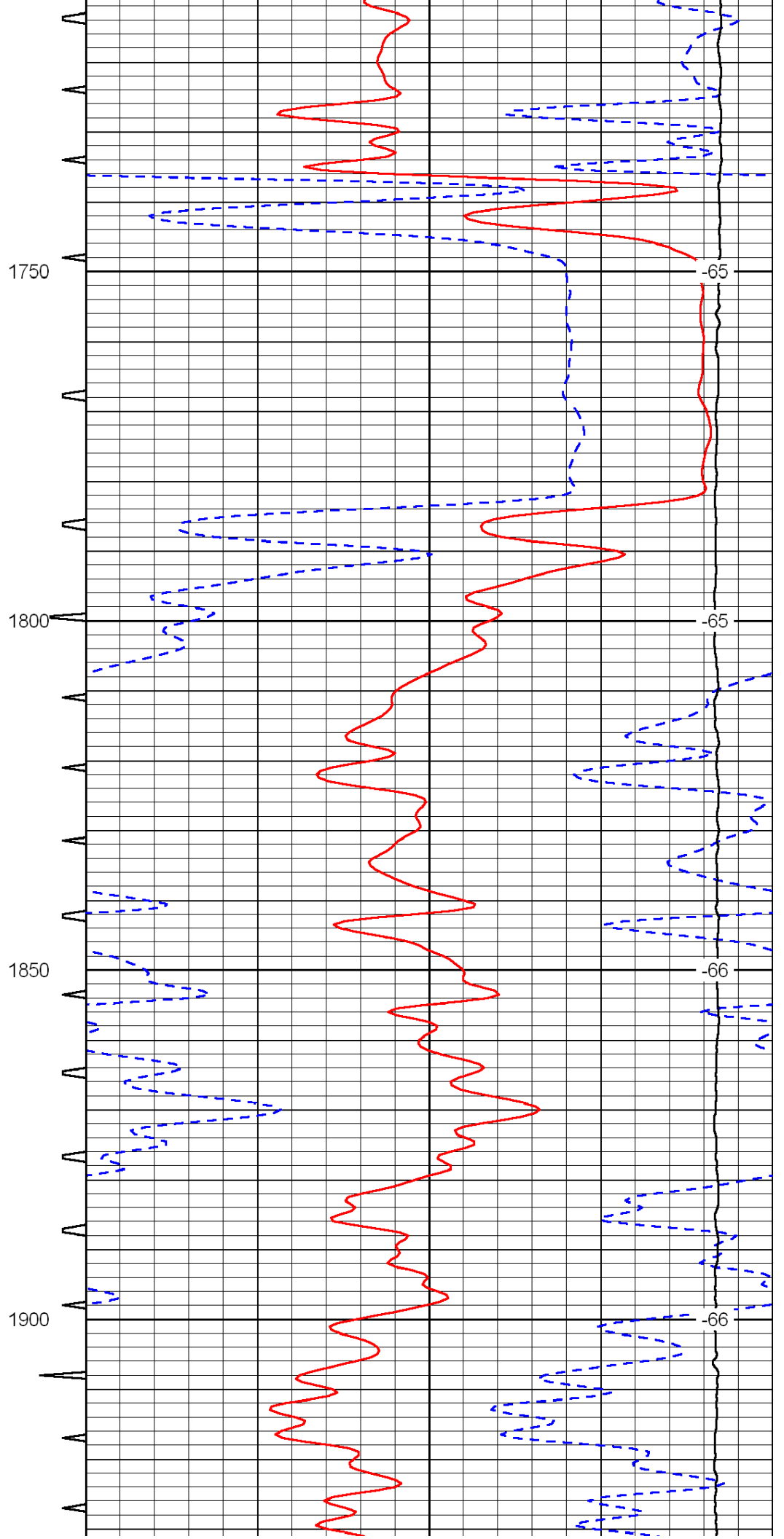
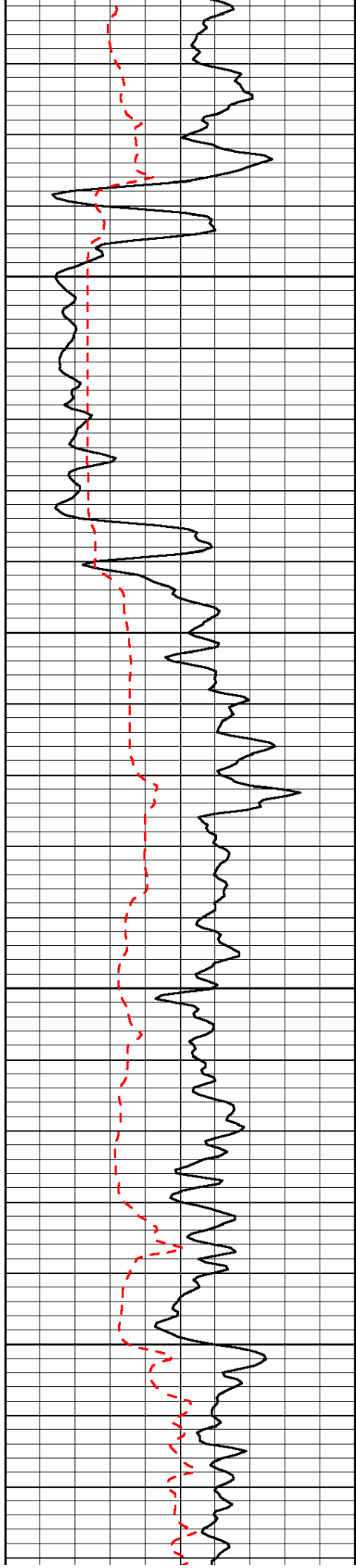


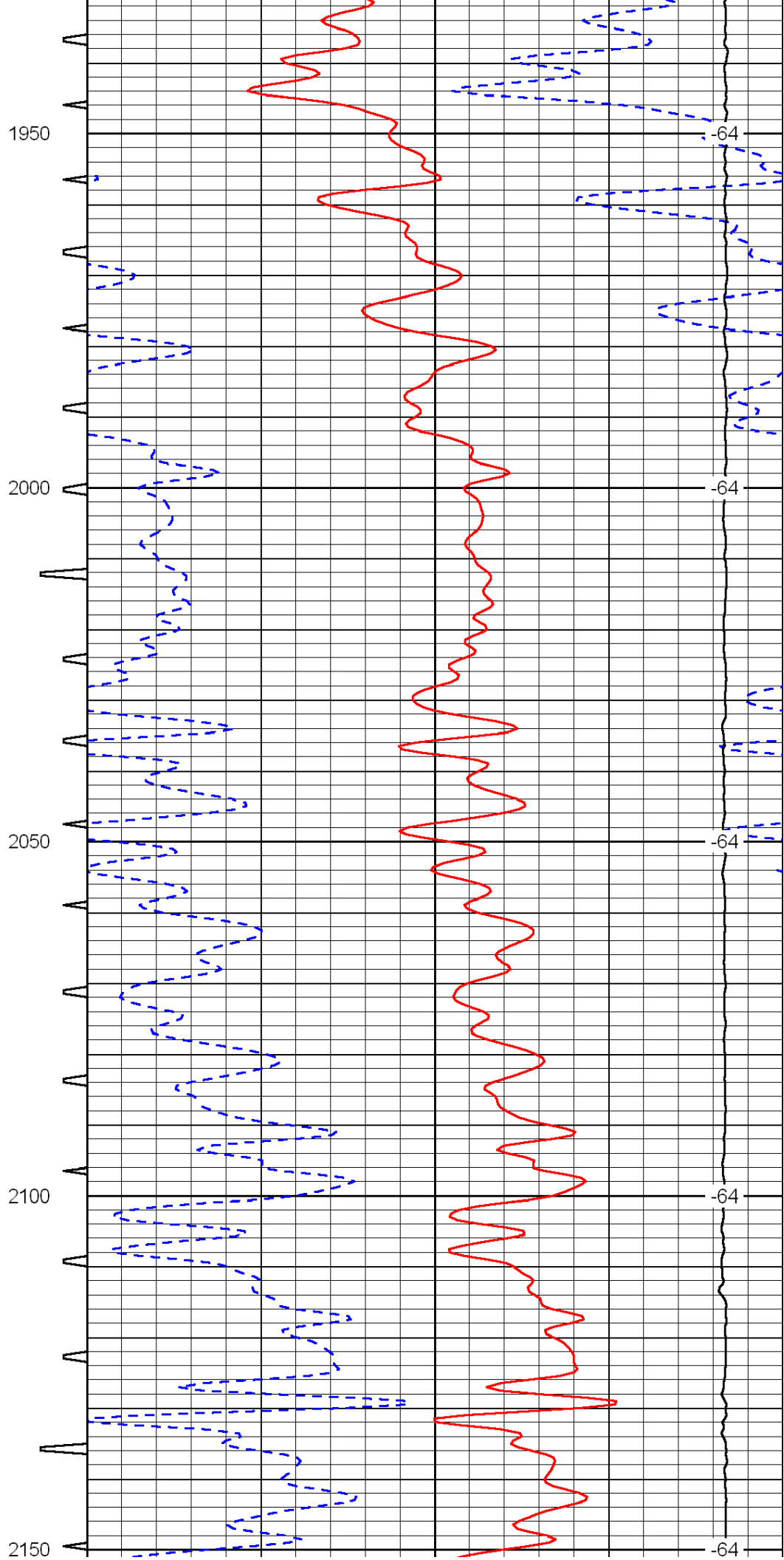
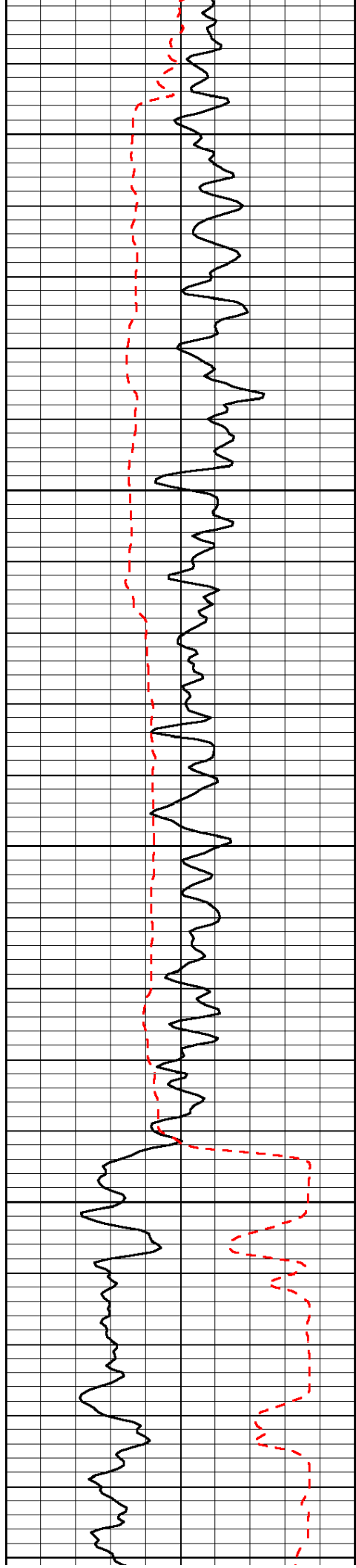


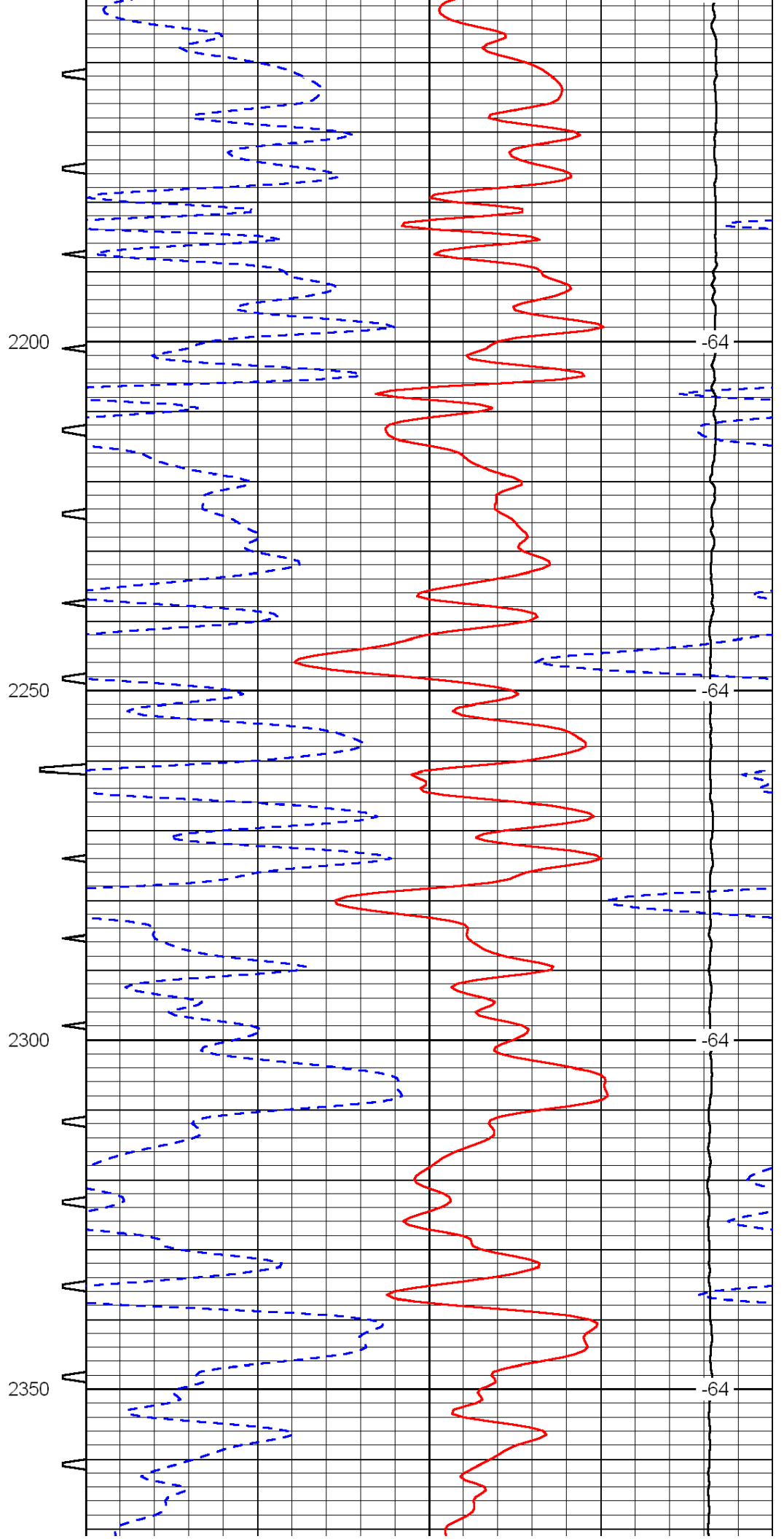
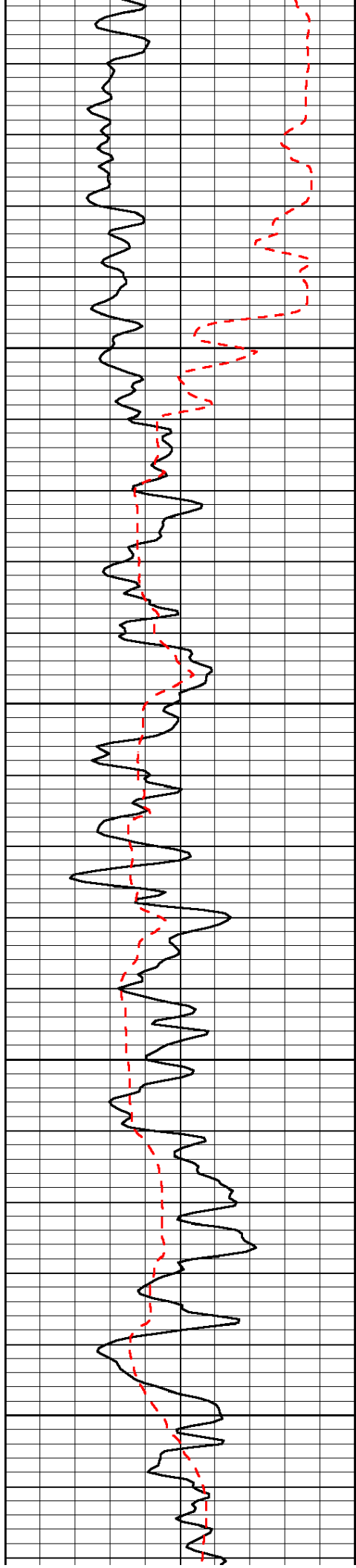


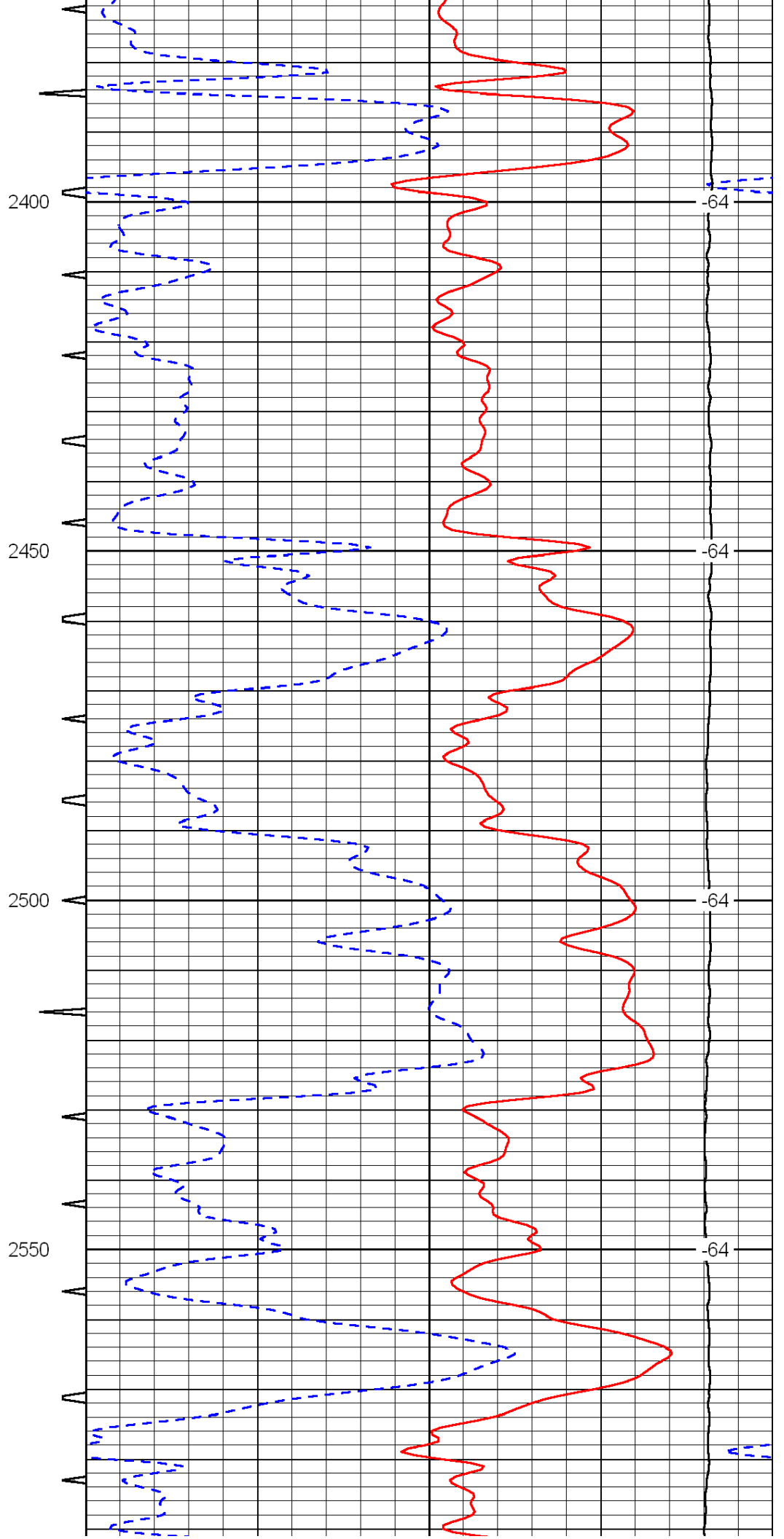
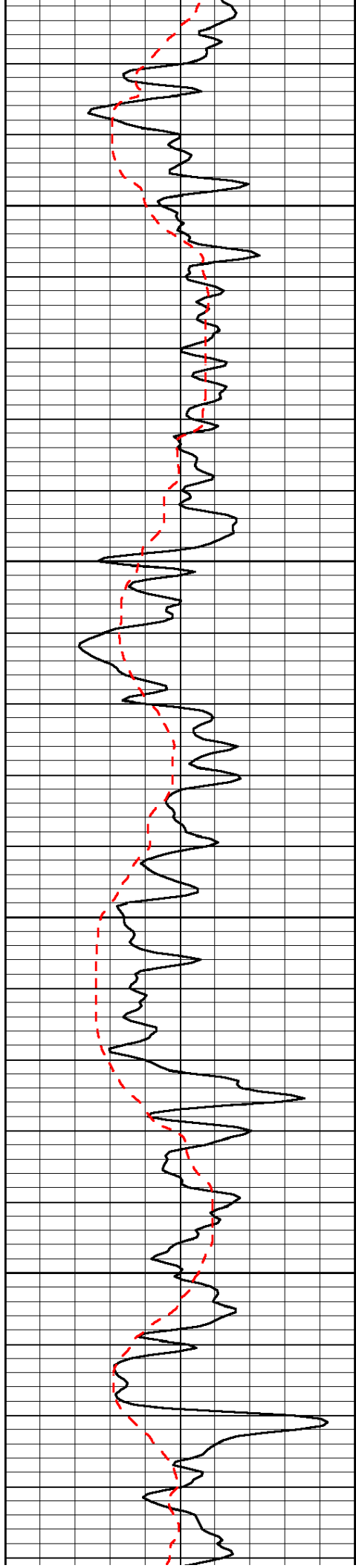


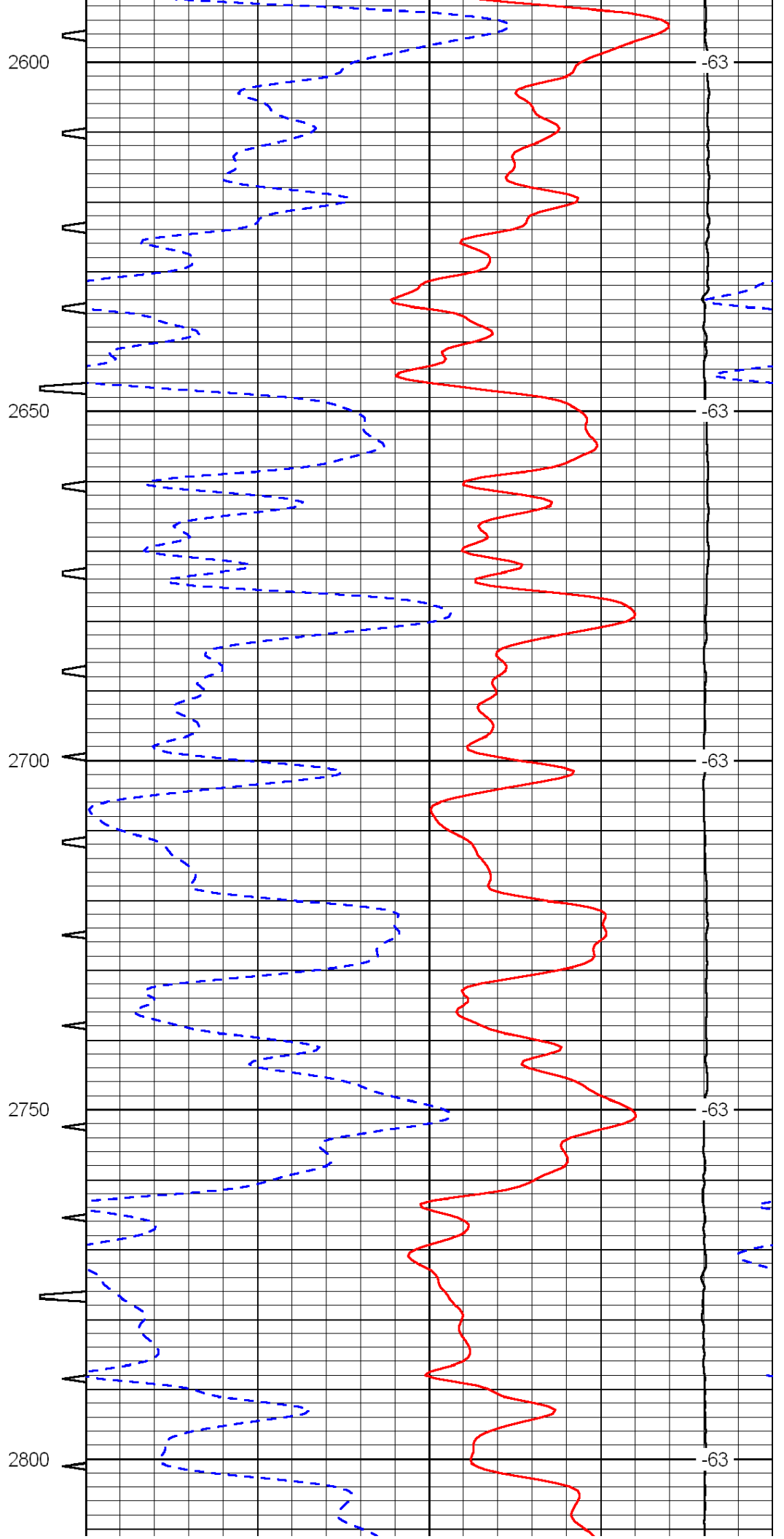
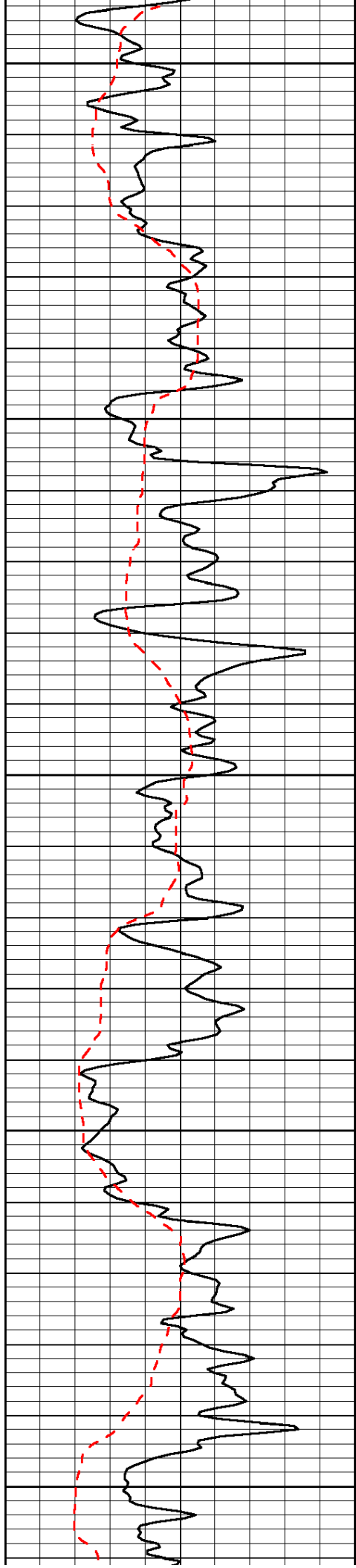


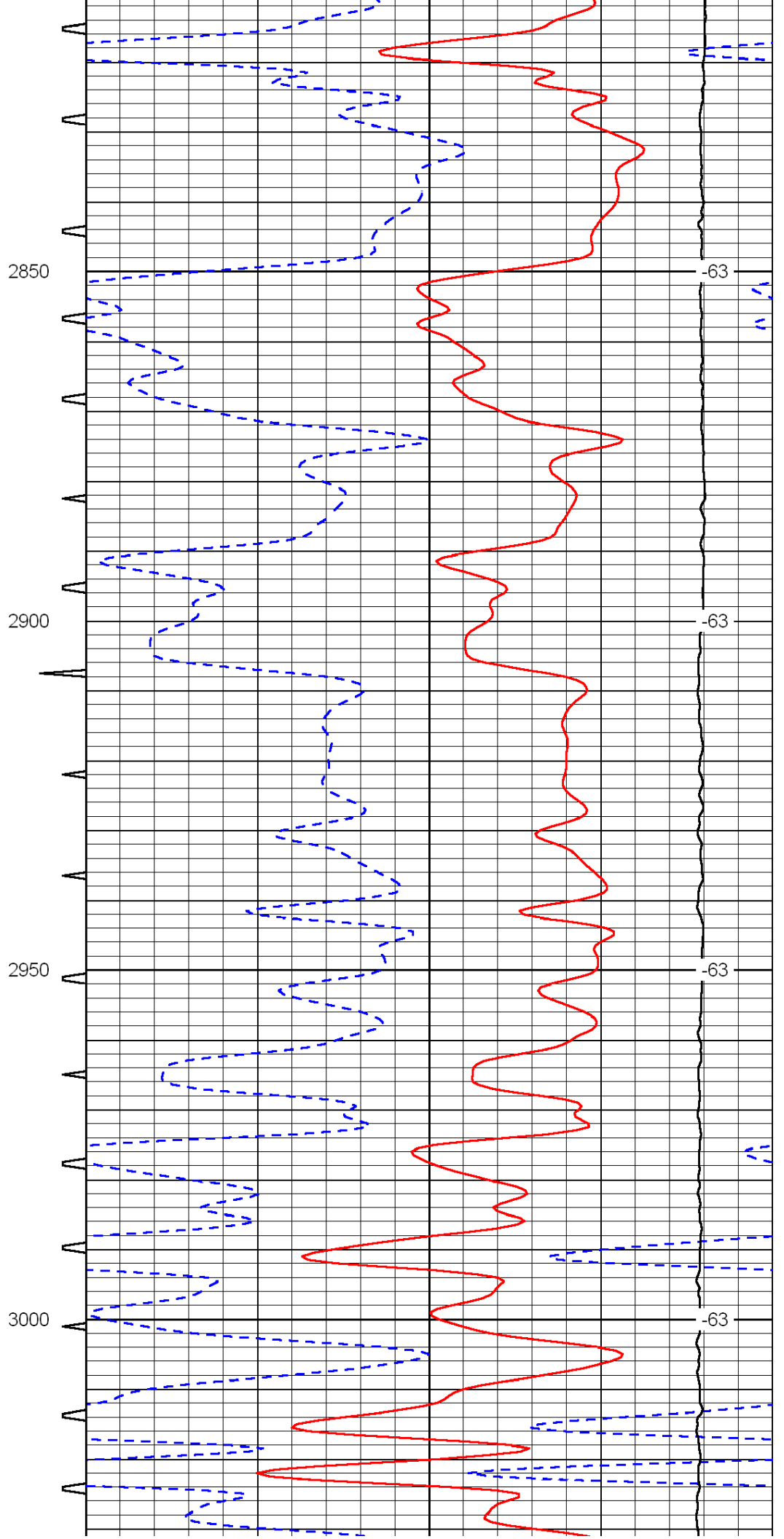
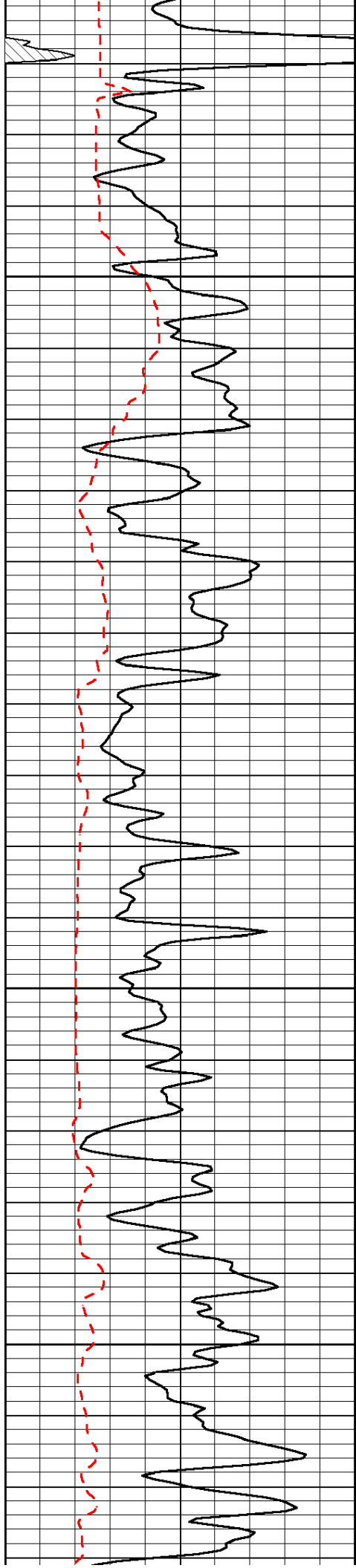


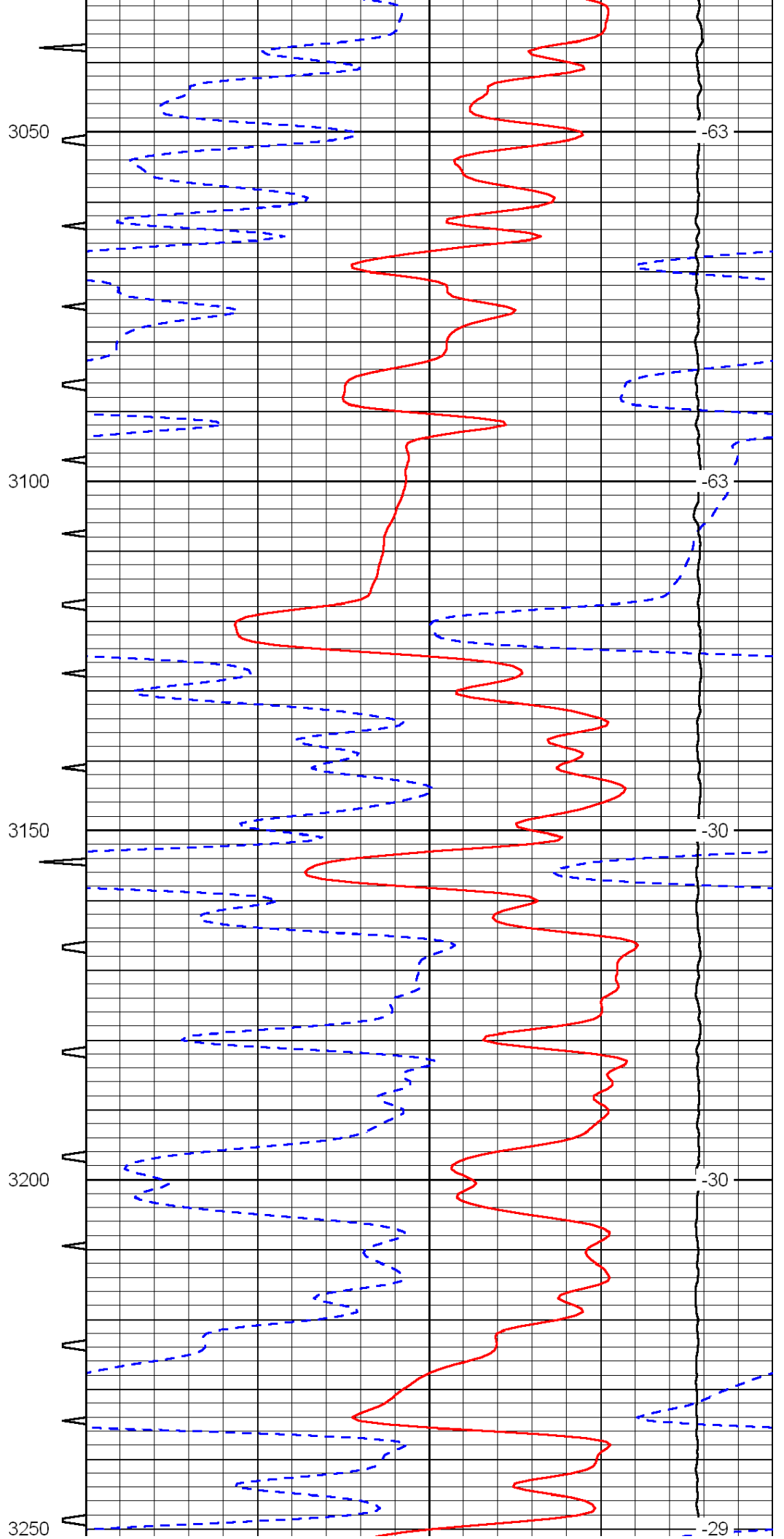
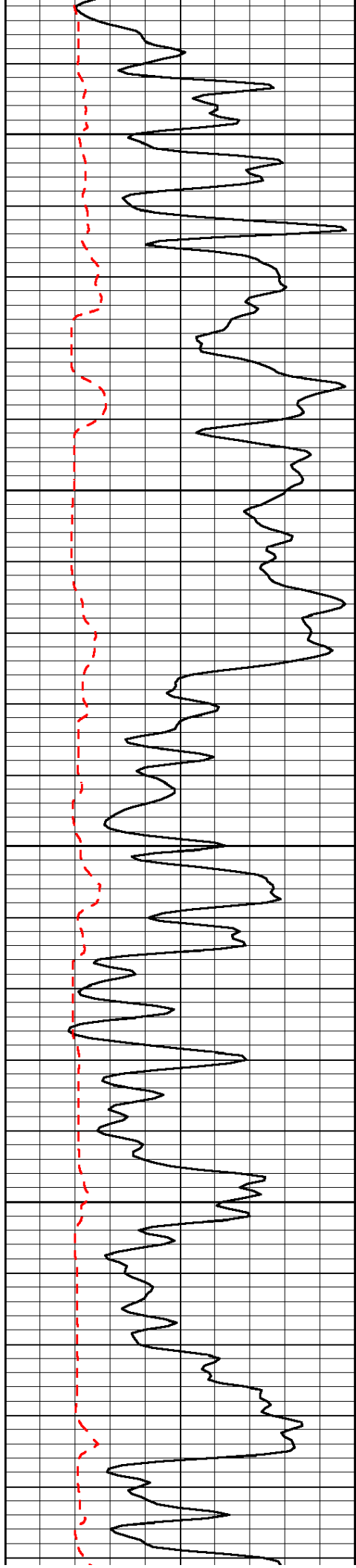


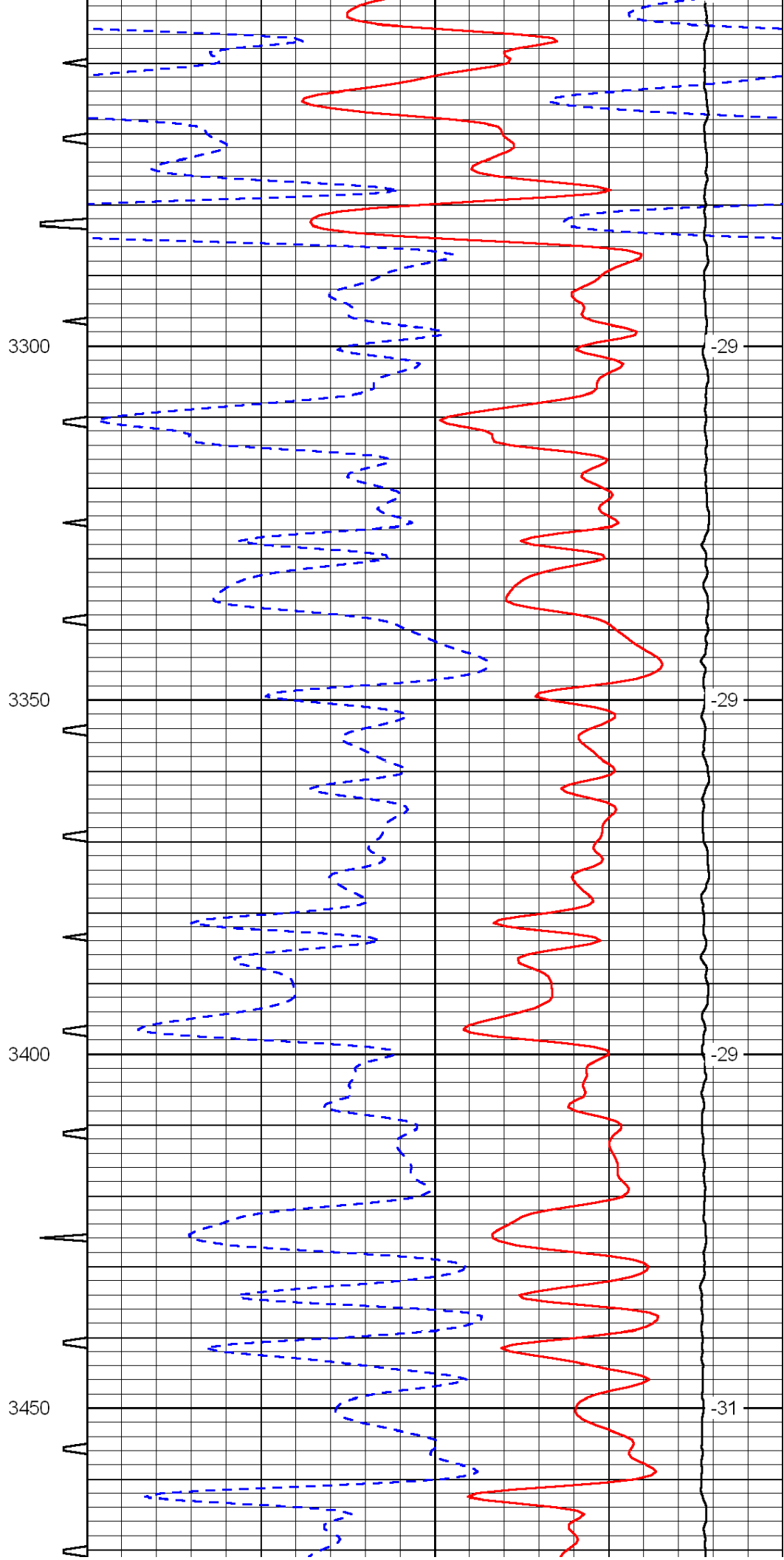
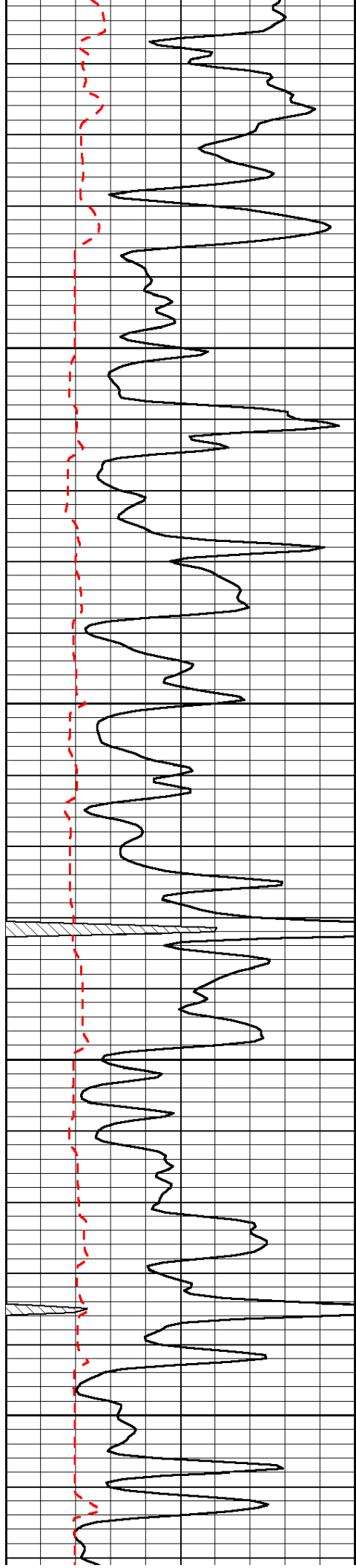


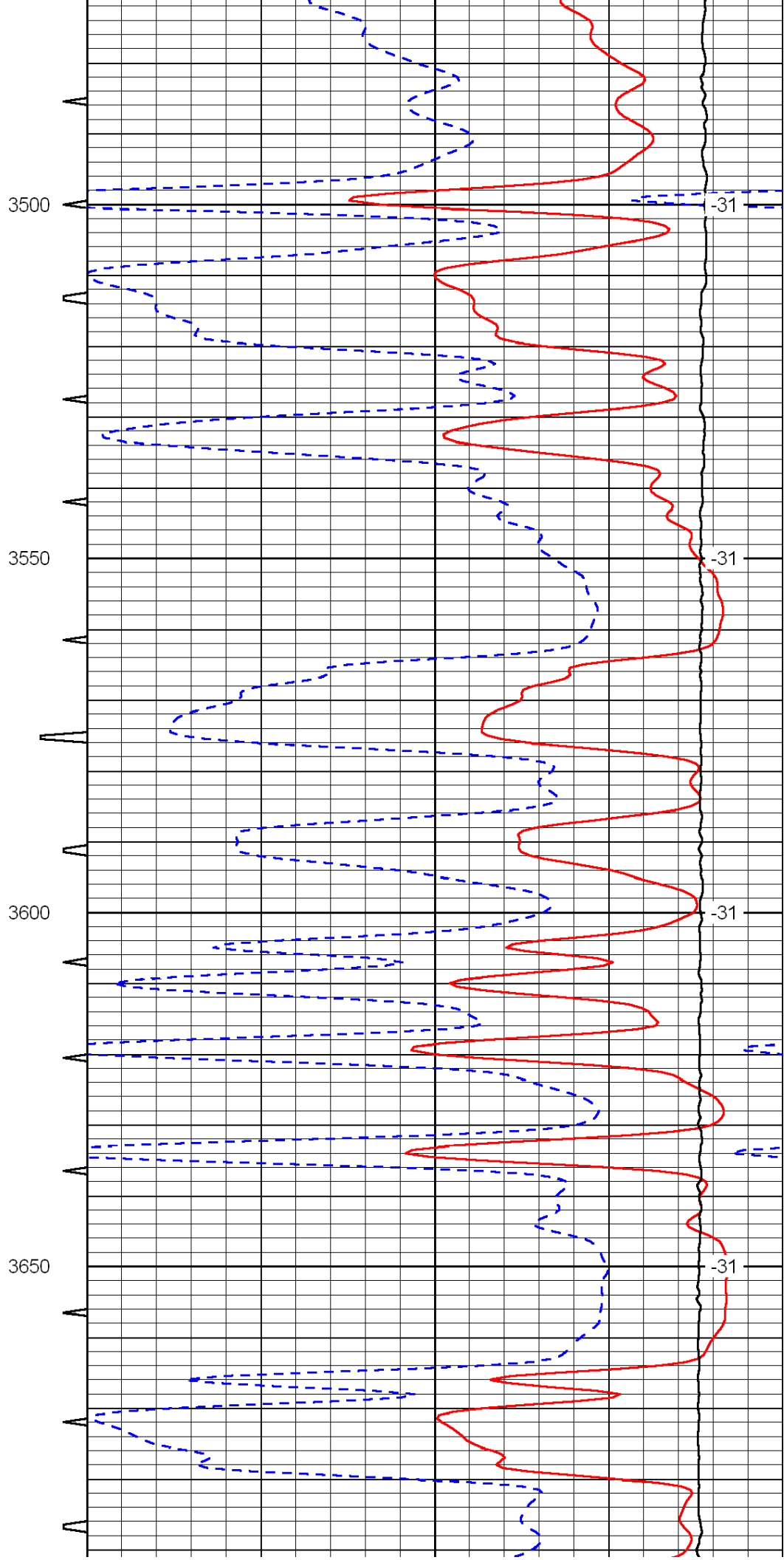
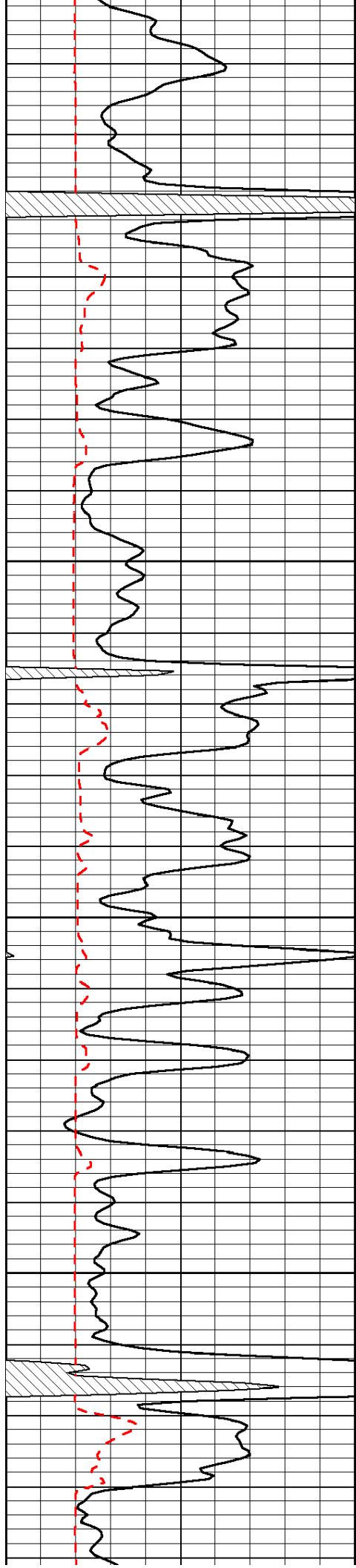


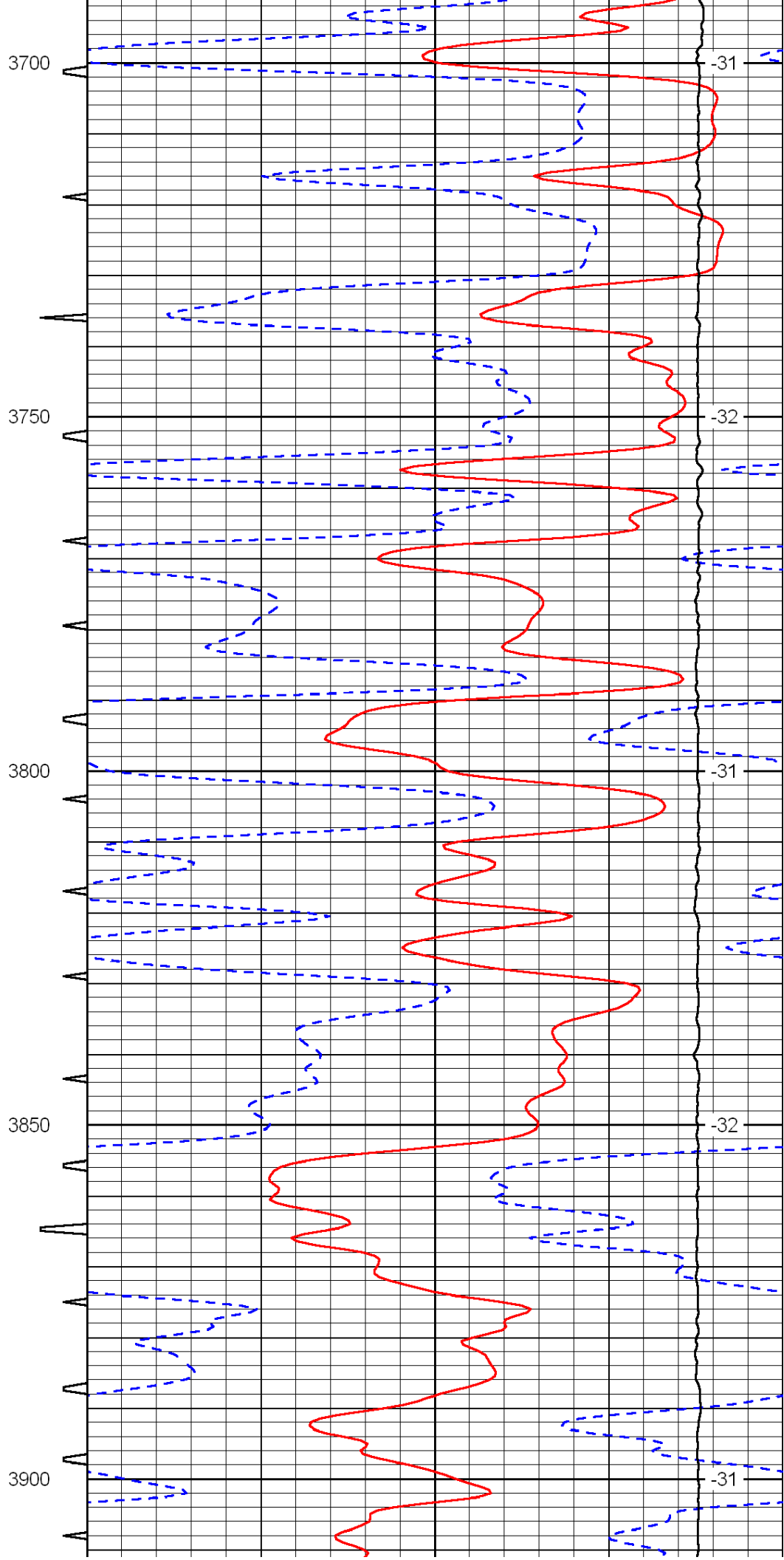
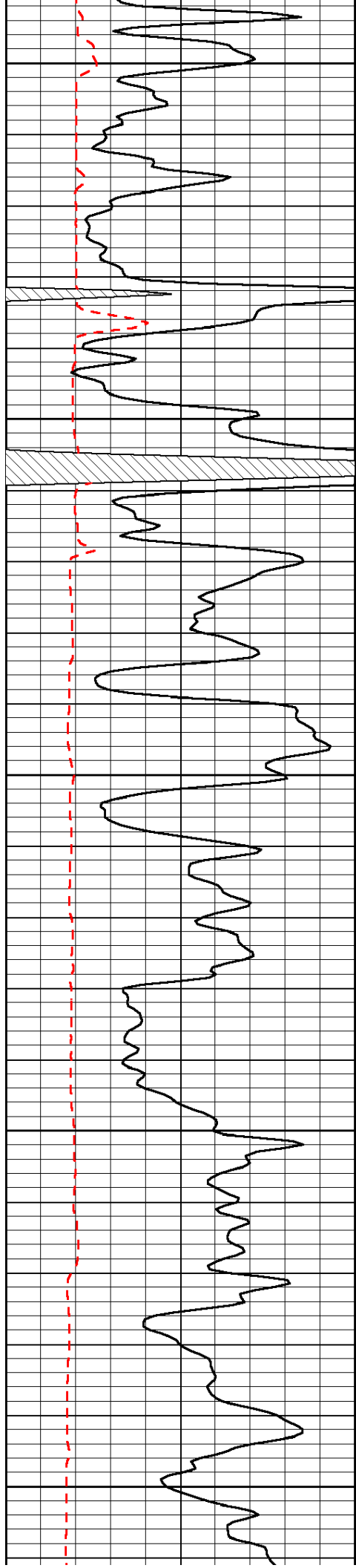


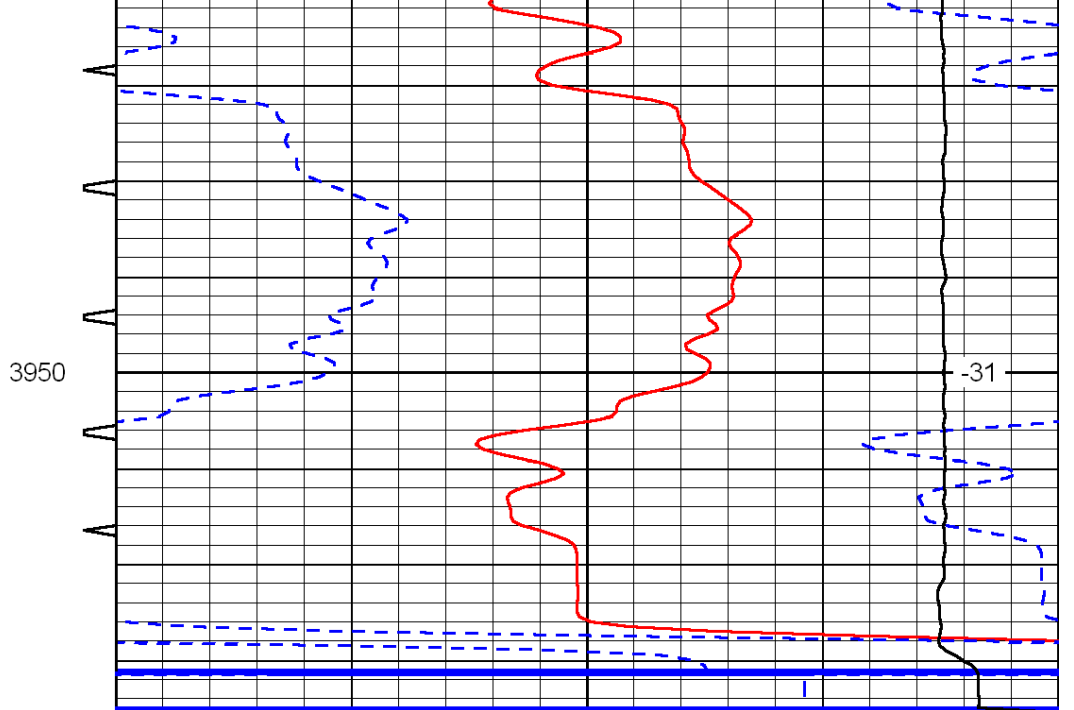
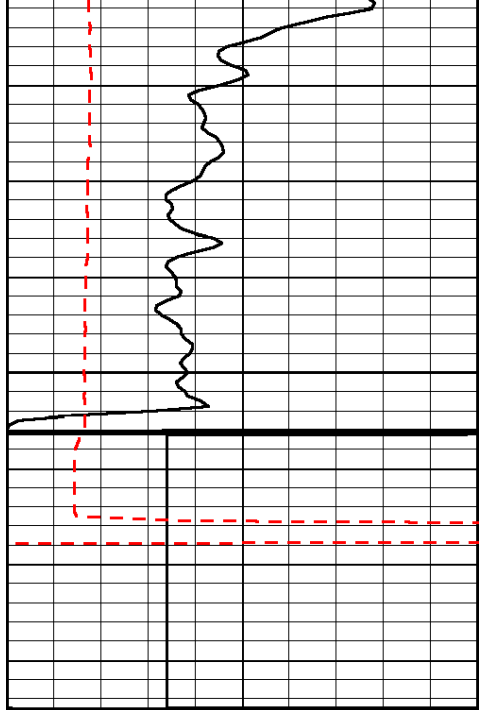












0	Gamma Ray	150
150	Gamma Ray	300
6	Caliper (GAPI)	16

Sonic Int	140	Delta Time (usec/ft)	40
5	0	SPOR	-10
	15000	LTEN (lb)	0

LSPD