



Microresistivity Log

DIGITAL LOG (785) 625-3858

API No. 15-065-23638-00-00	Company Murfin Drilling Company, Inc.	Well Seamac No. 1-19	Field Nora
	County Graham	State Kansas	
	Location 1960' FNL & 750' FWL		
	Sec: 19	Twp: 10 S	Rge: 21 W
Permanent Datum Log Measured From Drilling Measured From	Ground Level Kelly Bushing Kelly Bushing	Elevation 2256 5 Ft. Above Perm. Datum	Other Services CNL/CDL DIL/BHCS
Date	4/26/2010	Elevation	K.B. 2261 D.F. 2256 G.L. 2256

Run Number	One
Depth Driller	3980
Depth Logger	3979
Bottom Logged Interval	3978
Top Log Interval	0
Casing Driller	8.625 @ 220
Casing Logger	214
Bit Size	7.875
Type Fluid in Hole	Chemical
Salinity, ppm CL	5000
Density / Viscosity	9.2 58
pH / Fluid Loss	11.0 6.8
Source of Sample	Flowline
Rm @ Meas. Temp	1.10 @ 60
Rmf @ Meas. Temp	0.83 @ 60
Rmc @ Meas. Temp	1.49 @ 60
Source of Rmf / Rmc	Charts
Rm @ BHT	0.57 @ 116
Operating Rig Time	4 1/2 Hours
Max Rec. Temp. F	116
Equipment Number	15
Location	Hays
Recorded By	B. Becker
Witnessed By	Paul Gunzelman

<<< Fold Here >>>

All interpretations are opinions based on inferences from electrical or other measurements and we cannot and do not guarantee the accuracy or correctness of any interpretation, and we shall not, except in the case of gross or willful negligence on our part, be liable or responsible for any loss, costs, damages, or expenses incurred or sustained by anyone resulting from any interpretation made by any of our officers, agents or employees. These interpretations are also subject to our general terms and conditions set out in our current Price Schedule.

Comments

Thank you for using Log-Tech, Inc.
 (785) 625-3858

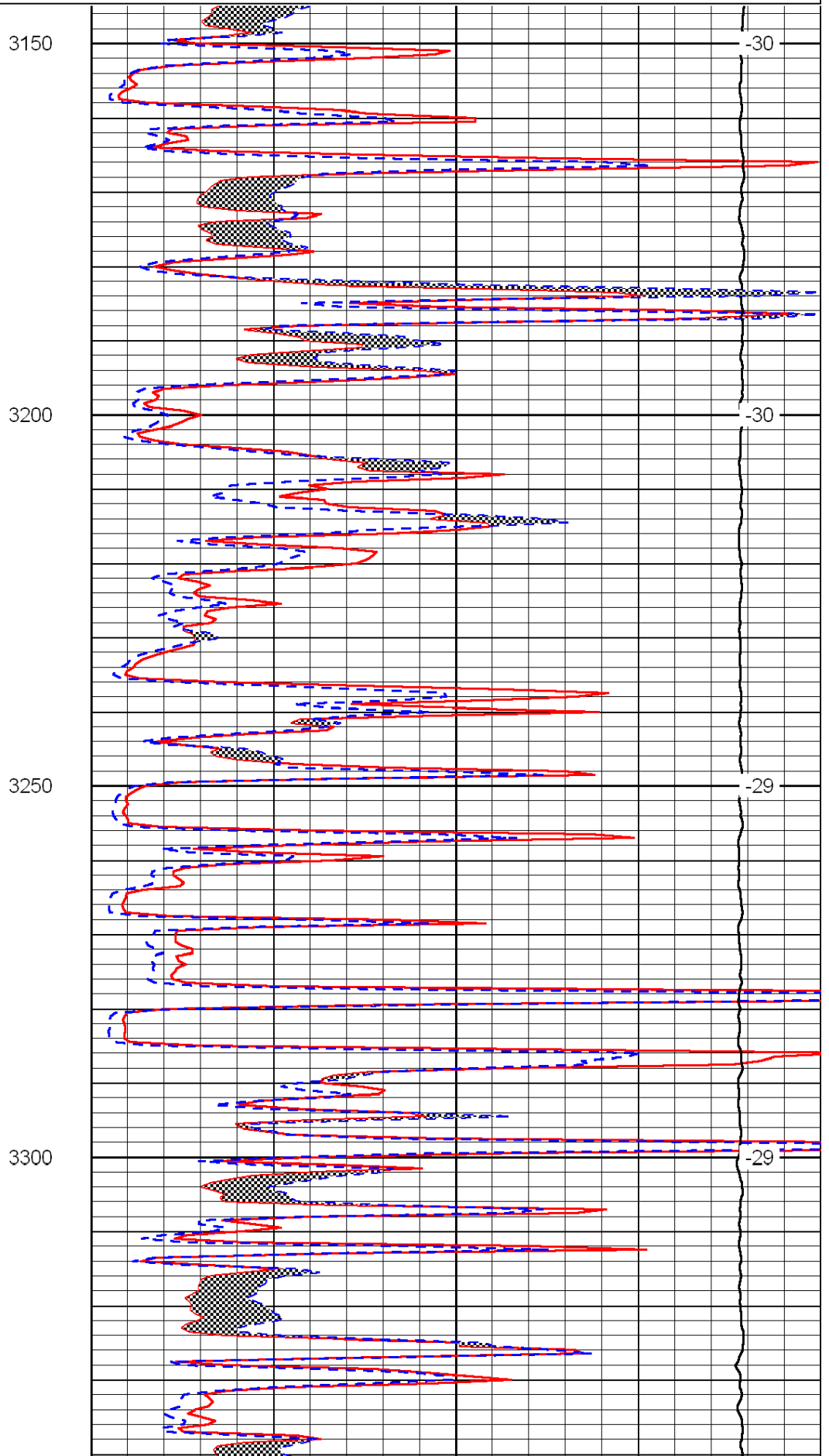
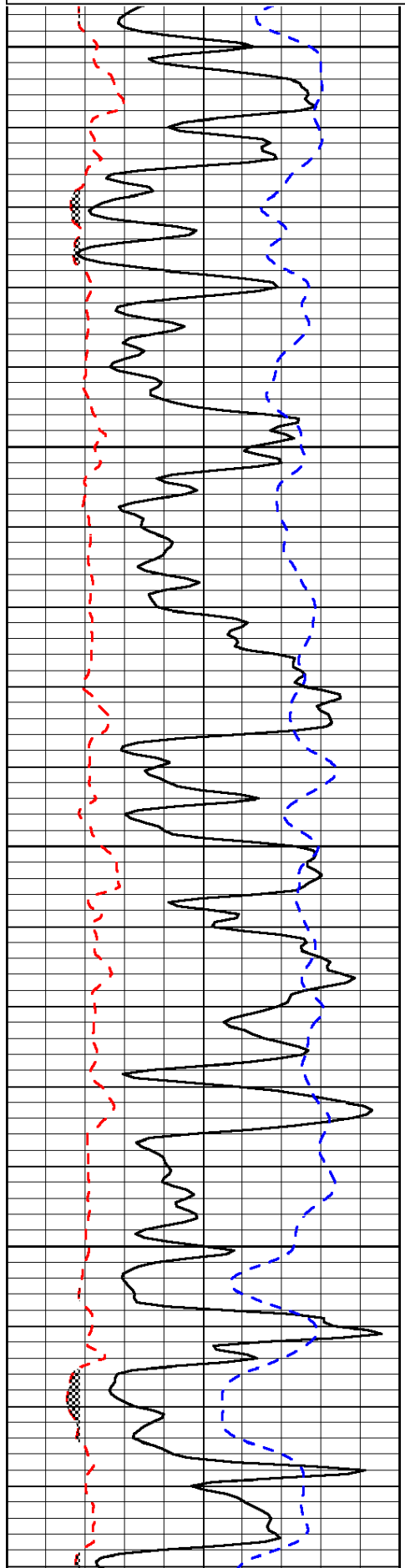
 Ellis, Ks; West on I-70 to Riga Rd;
 North to Dead End; 2-3/4 West; 2 North;
 1 West; 3/4 North; East Into

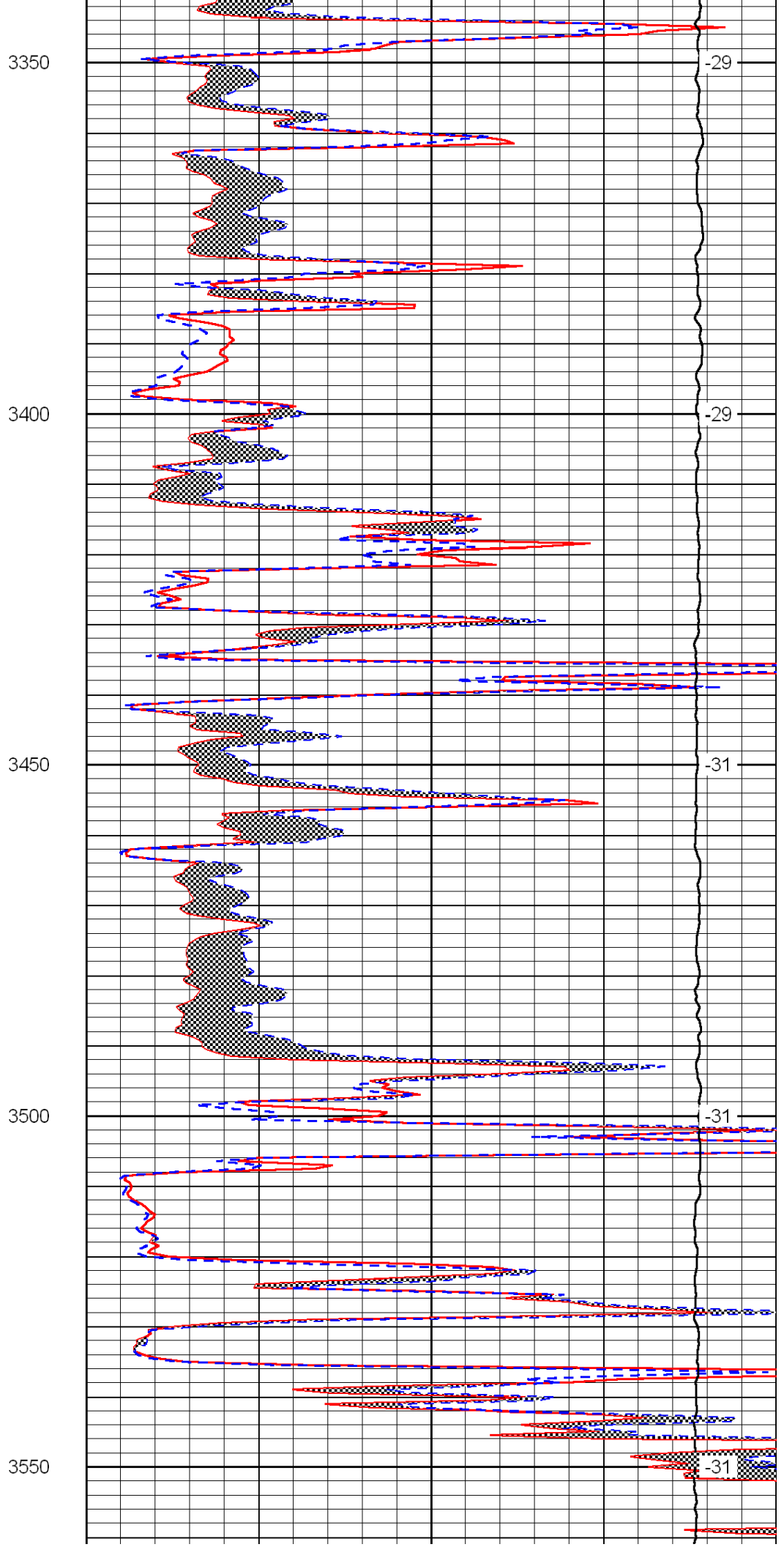
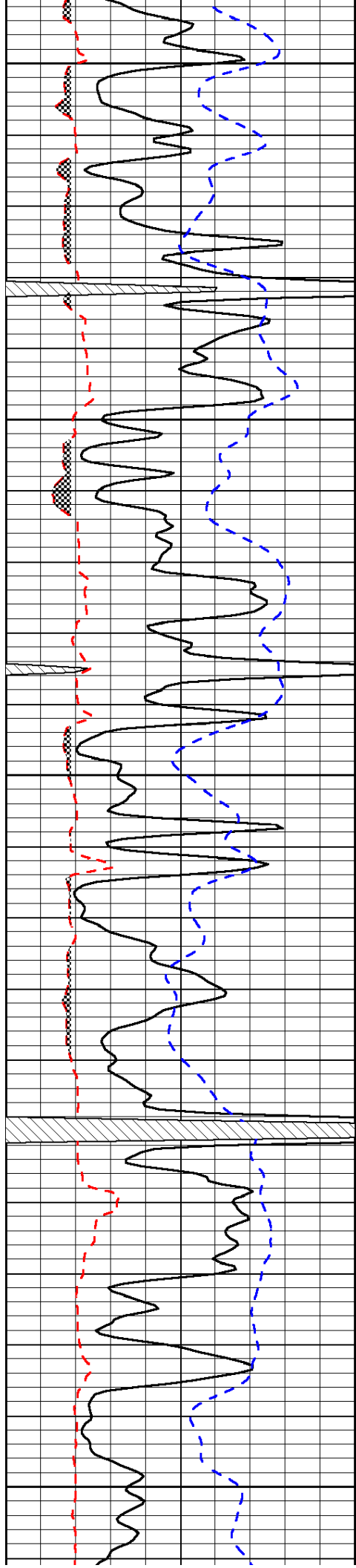
Database File: c:\warrior\data\murfin_seamac #1-19\murfinhd.db
 Dataset Pathname: DIL\murfstk
 Presentation Format: micro
 Dataset Creation: Mon Apr 26 16:57:39 2010
 Charted by: Depth in Feet scaled 1:240

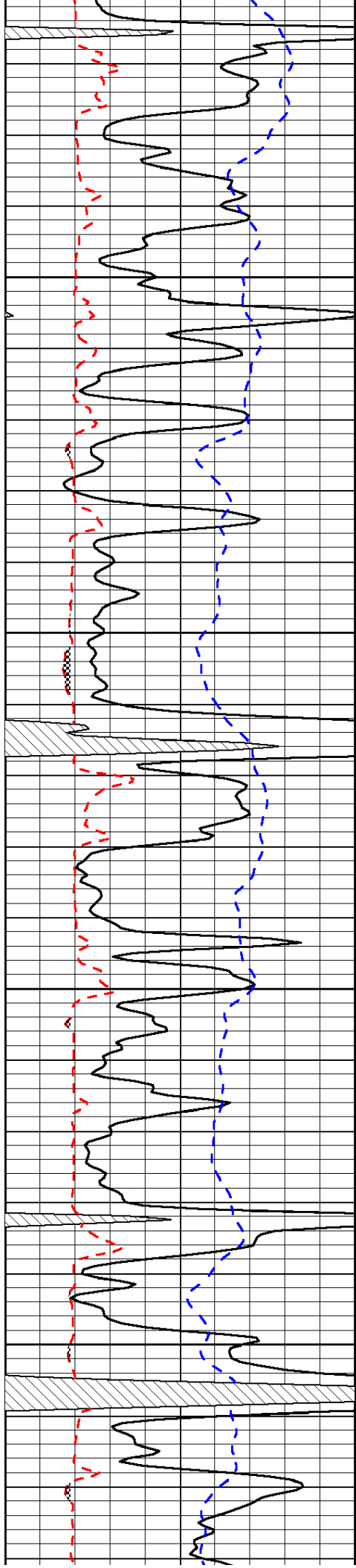
0	Gamma Ray	150
6	Micro Log Caliper (GAPI)	16
-200	SP (mV)	0

0	Micro Inverse 1 X 1	40
0	Micro Normal 2"	40
15000	Line Weight	0

LSPD





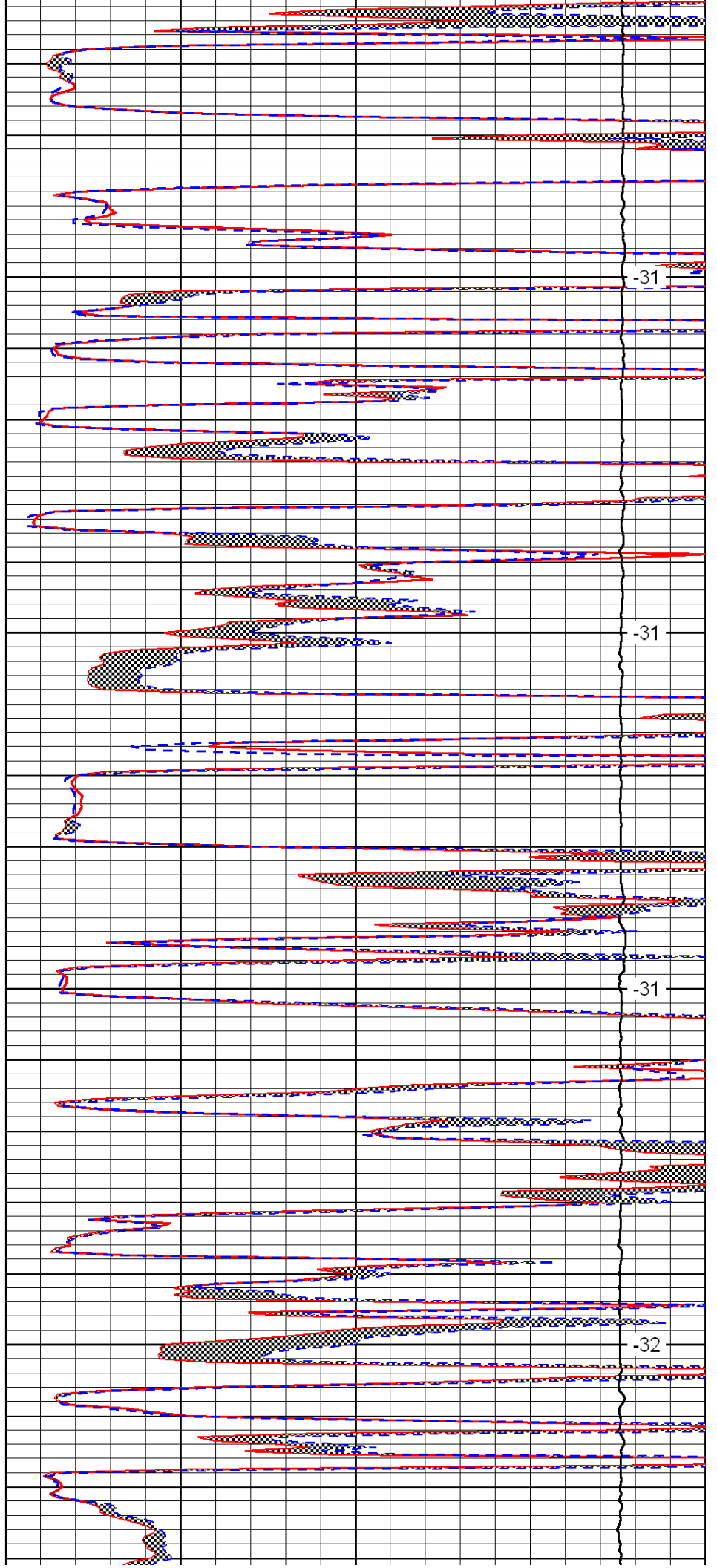


3600

3650

3700

3750

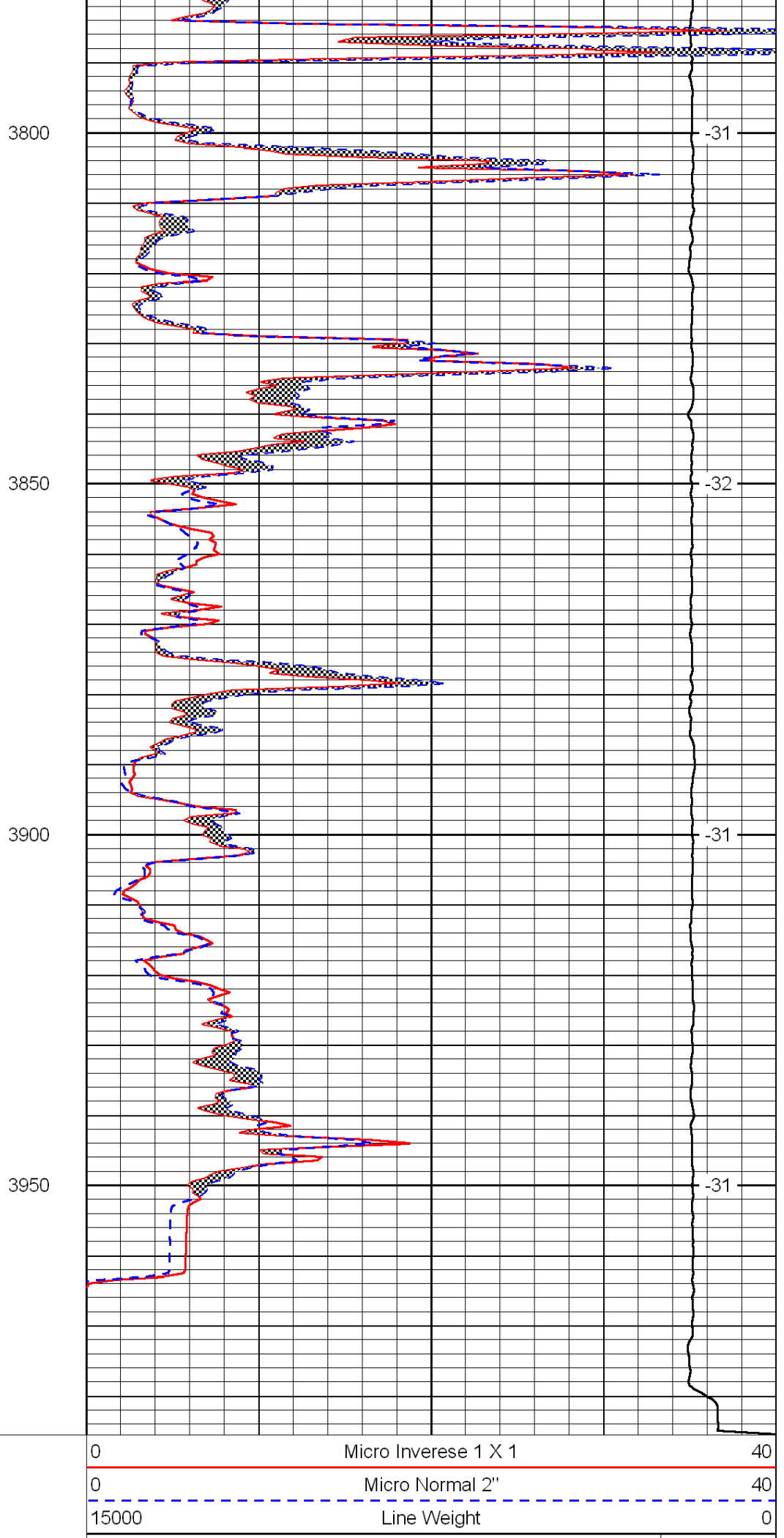
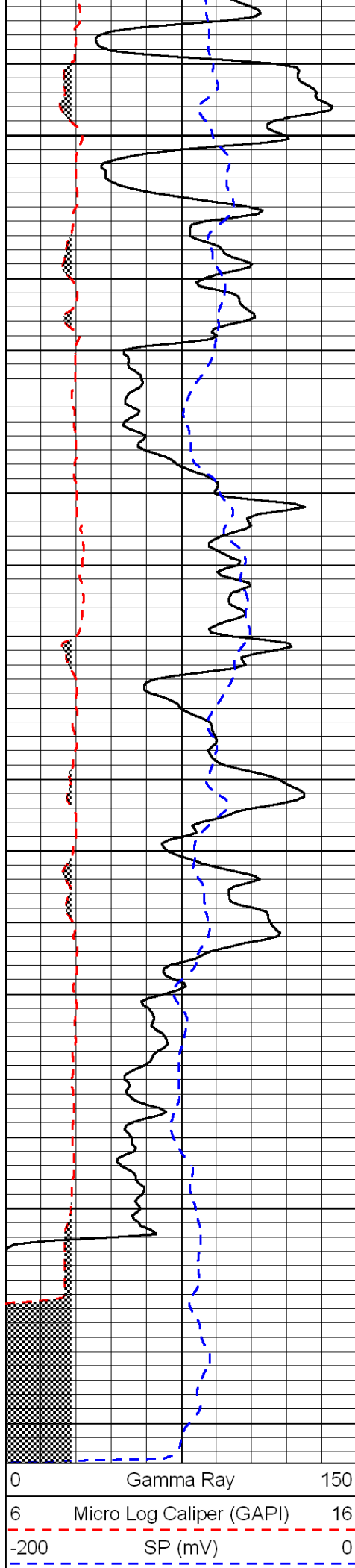


-31

-31

-31

-32



3800

-31

3850

-32

3900

-31

3950

-31

