



Microresistivity Log

DIGITAL LOG (785) 625-3858

API No.	15-109-20,890-00-00		
Company	Russell Oil, Inc.		
Well	Brian Beckman #1-36		
Field	Wildcat		
County	Logan	State	Kansas
Location	SW NE NE SE 2270' FSL & 620' FEL		
Sec: 36	Twp: 12 S	Rge: 34 W	Other Services CNL / CDL DIL / BHCS

Permanent Datum	Ground Level	Elevation	3077
Log Measured From	Kelly Bushing	11 Ft. Above Perm. Datum	
Drilling Measured From	Kelly Bushing		
Date	4/24/2010		
Run Number	Two		
Depth Driller	4750		
Depth Logger	4753		
Bottom Logged Interval	4752		
Top Log Interval	3500		
Casing Driller	8.625 @ 296		
Casing Logger	294		
Bit Size	7.875		
Type Fluid in Hole	Chemical		
Salinity, ppm CL	5.000		
Density / Viscosity	9.3	53	
pH / Fluid Loss	10.0	8.8	
Source of Sample	Flowline		
Rm @ Meas. Temp	.47	@ 55	
Rmf @ Meas. Temp	.35	@ 55	
Rmc @ Meas. Temp	.63	@ 55	
Source of Rmf / Rmc	Charts		
Rm @ BHT	.21	@ 123	
Operating Rig Time	4 Hours		
Max Rec. Temp. F	123		
Equipment Number	15		
Location	Hays		
Recorded By	T. Martin		
Witnessed By	Steven D. Angle		

<<< Fold Here >>>

All interpretations are opinions based on inferences from electrical or other measurements and we cannot and do not guarantee the accuracy or correctness of any interpretation, and we shall not, except in the case of gross or willful negligence on our part, be liable or responsible for any loss, costs, damages, or expenses incurred or sustained by anyone resulting from any interpretation made by any of our officers, agents or employees. These interpretations are also subject to our general terms and conditions set out in our current Price Schedule.

Comments

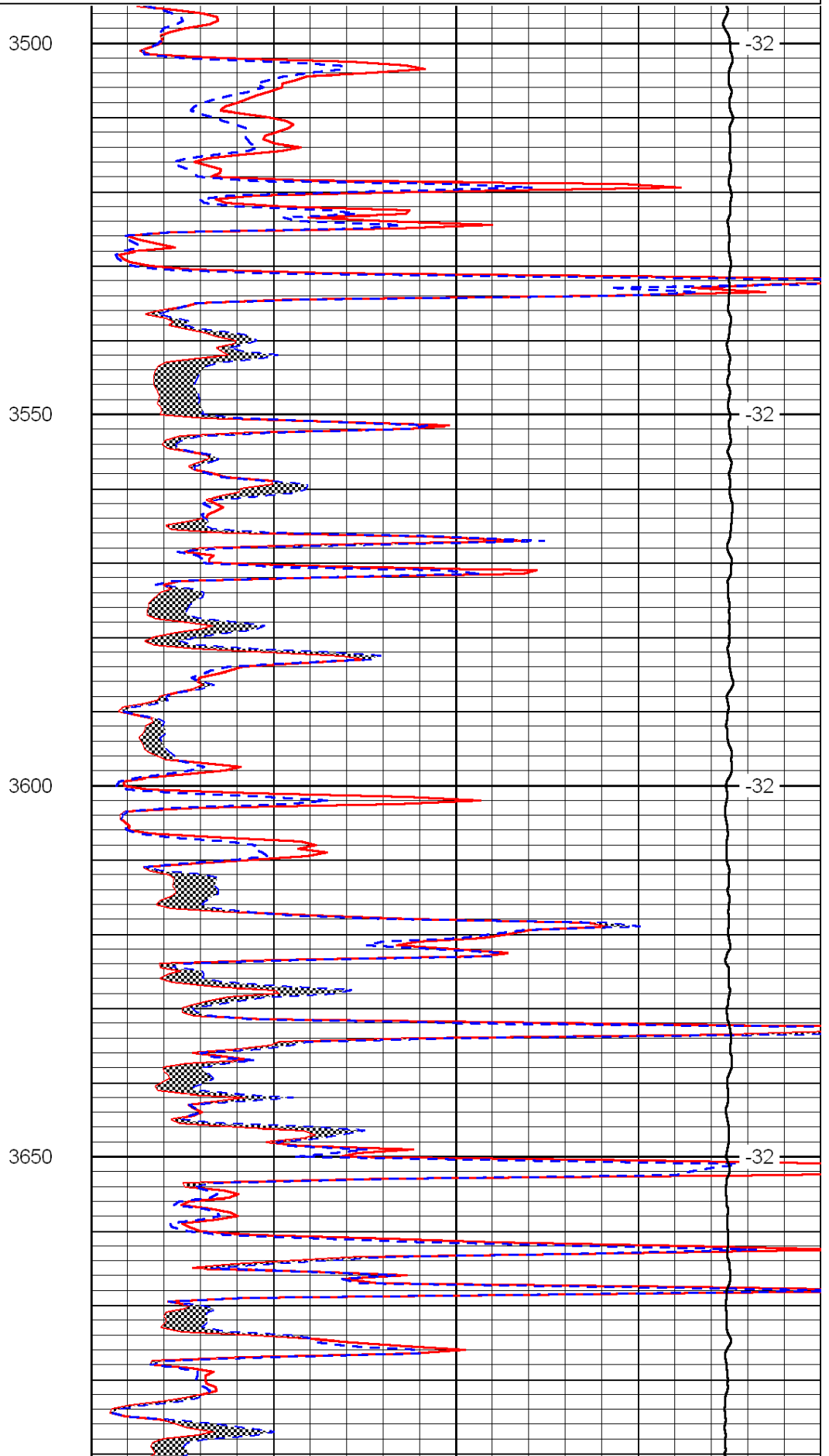
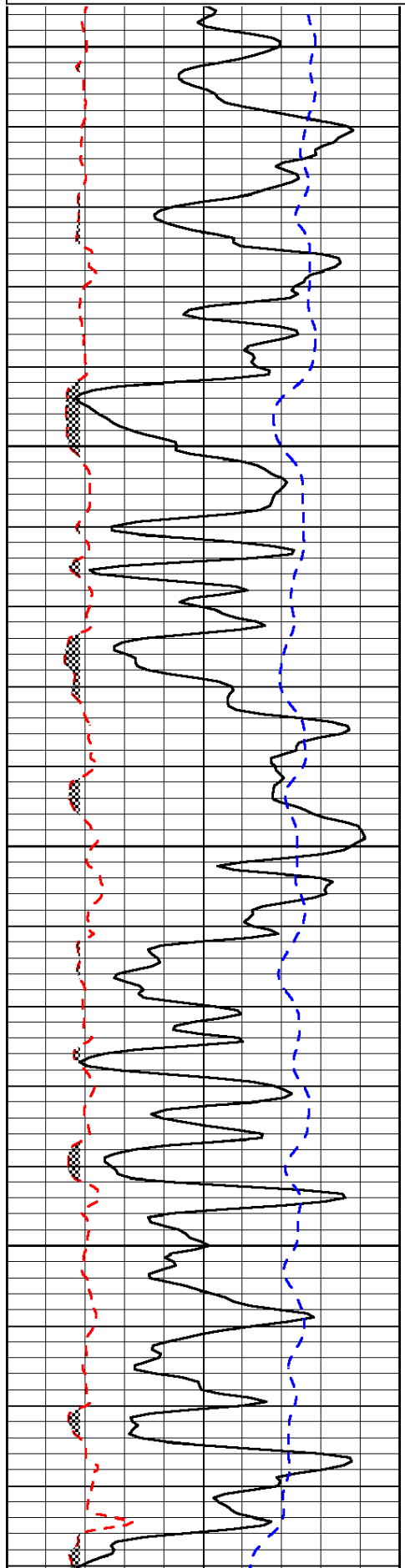
Thank you for using Log-Tech, Inc.
(785) 625-3858

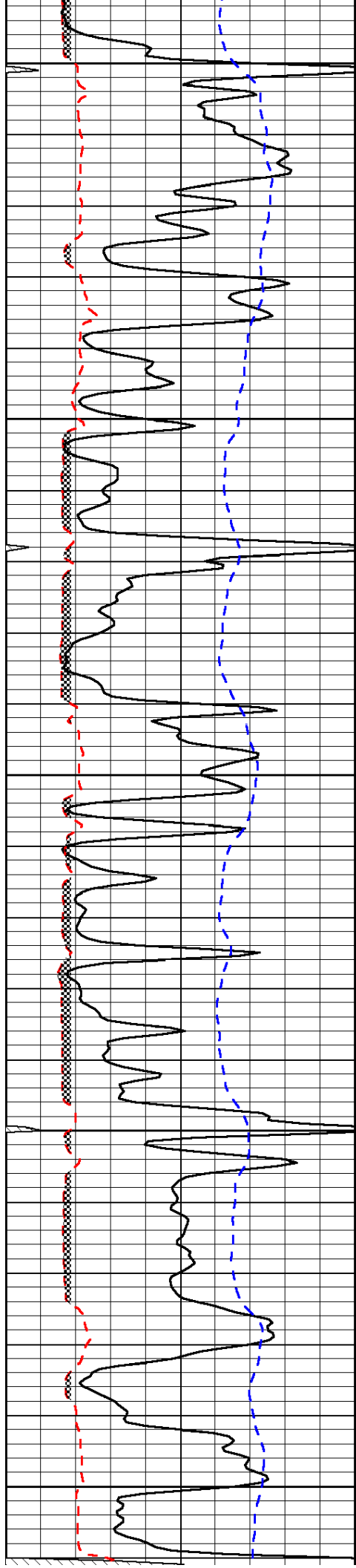
Monument, W side, 10 S to Seneca Rd, 1/2 W, N into

0	Gamma Ray	150
6	Micro Log Caliper (GAPI)	16
-200	SP (mV)	0

0	Micro Inverse 1 X 1	40
0	Micro Normal 2"	40
15000	Line Weight	0

LSPD





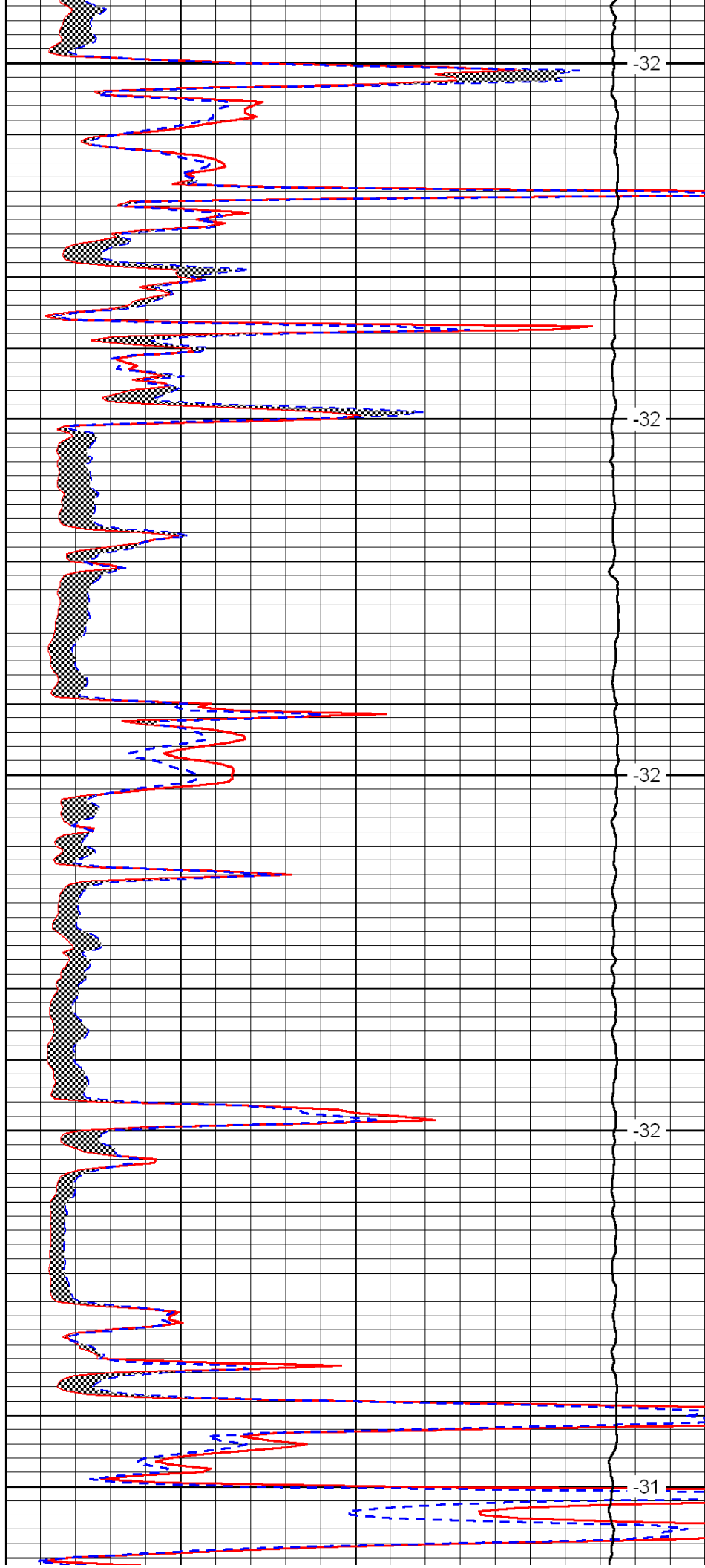
3700

3750

3800

3850

3900



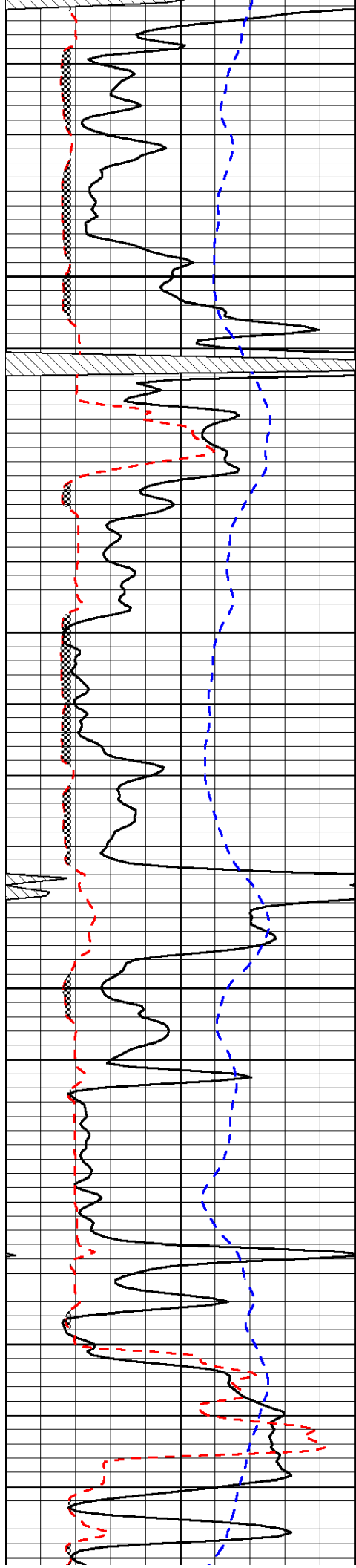
-32

-32

-32

-32

-31

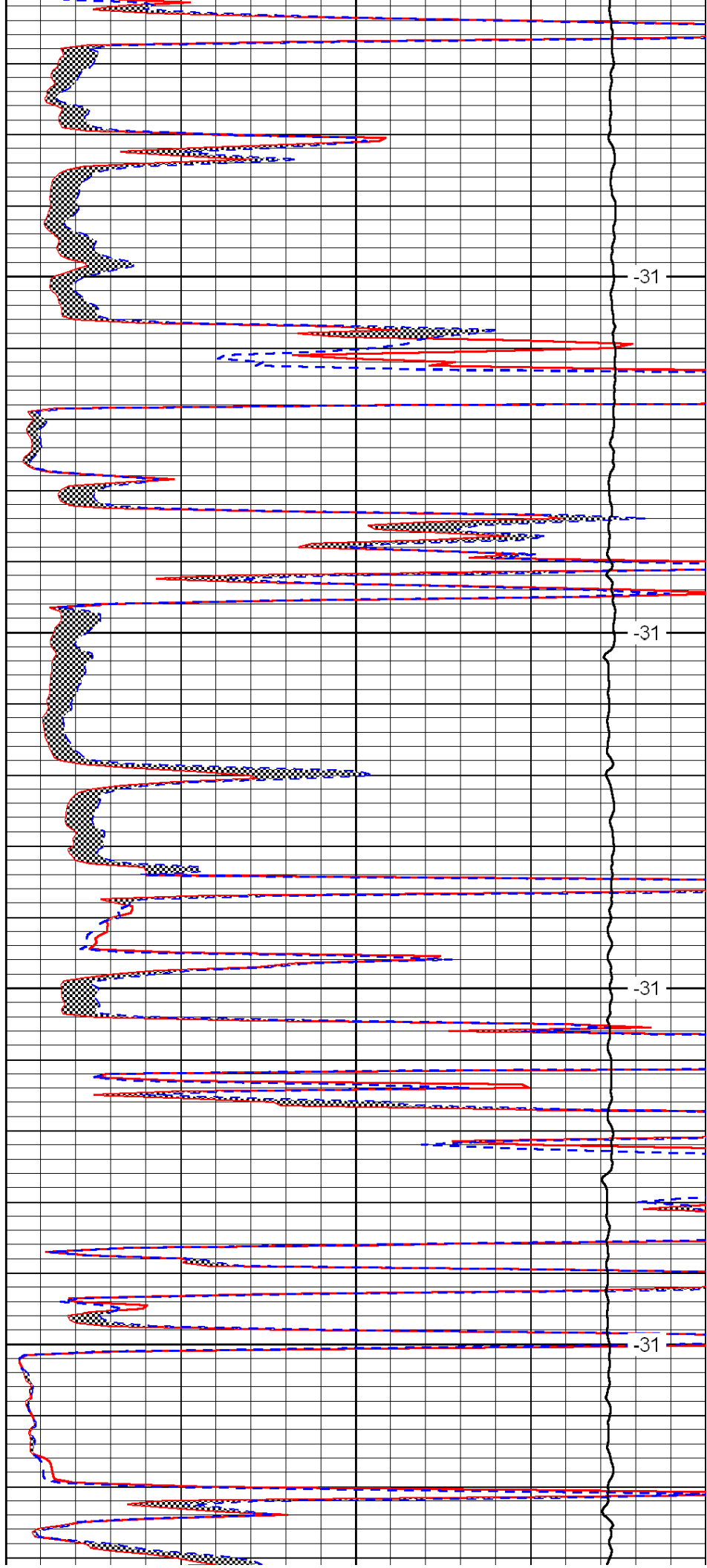


3950

4000

4050

4100

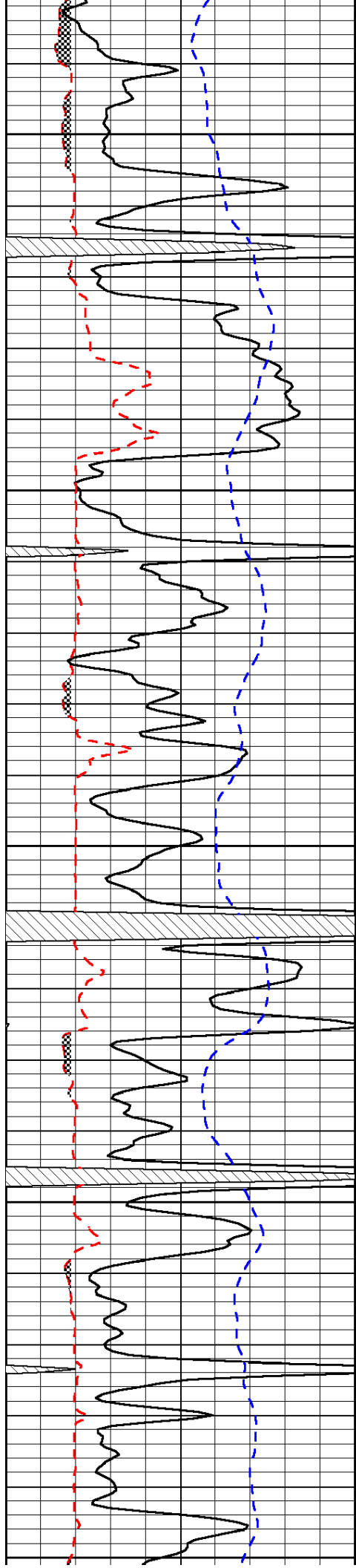


-31

-31

-31

-31



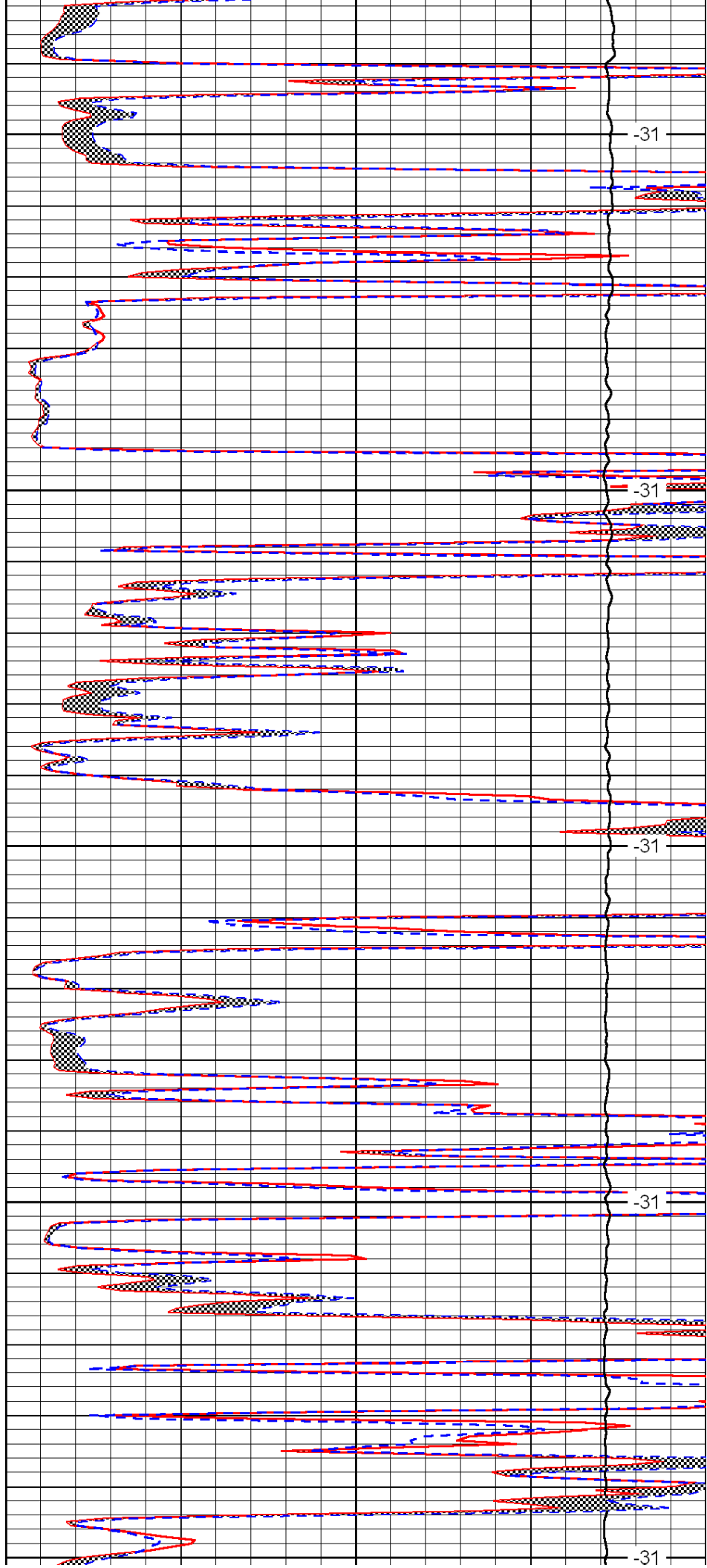
4150

4200

4250

4300

4350



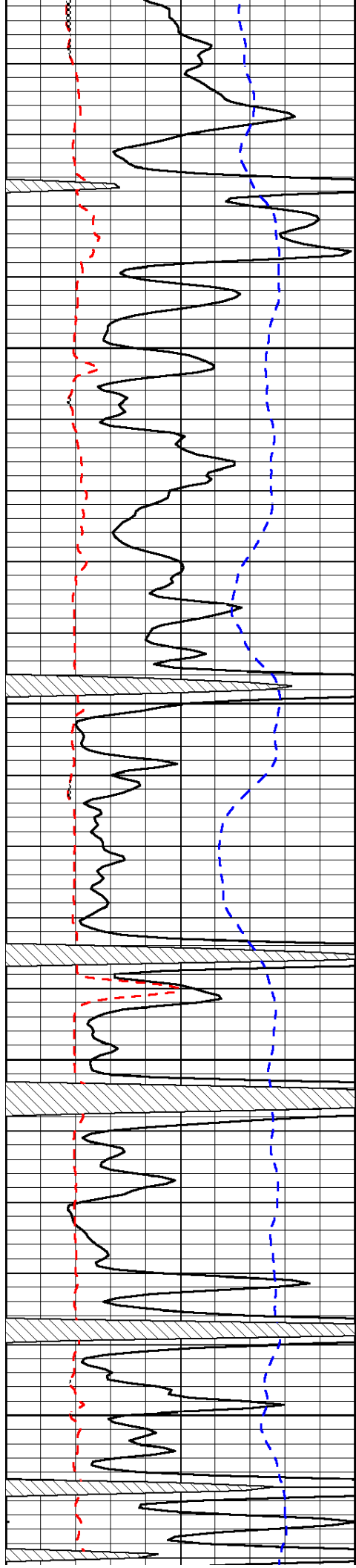
-31

-31

-31

-31

-31

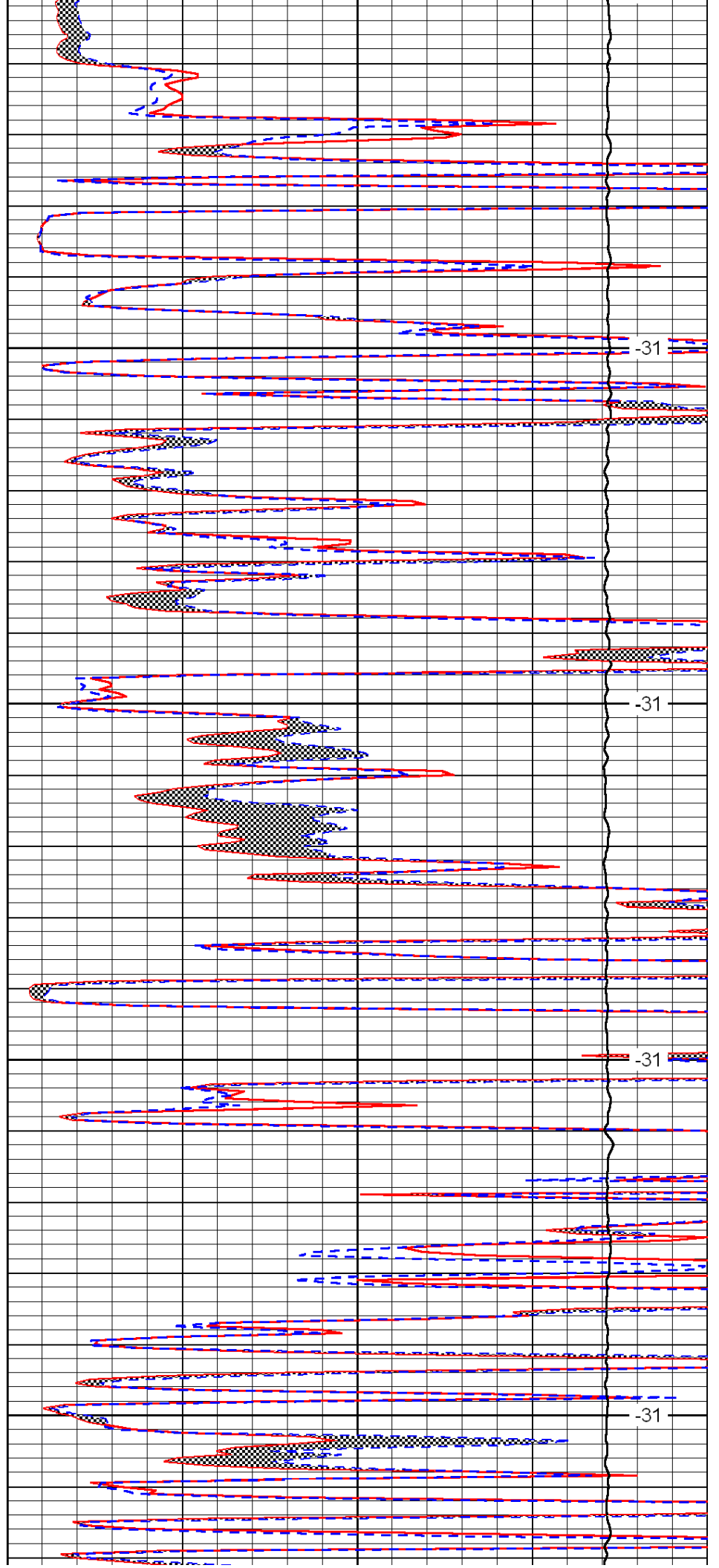


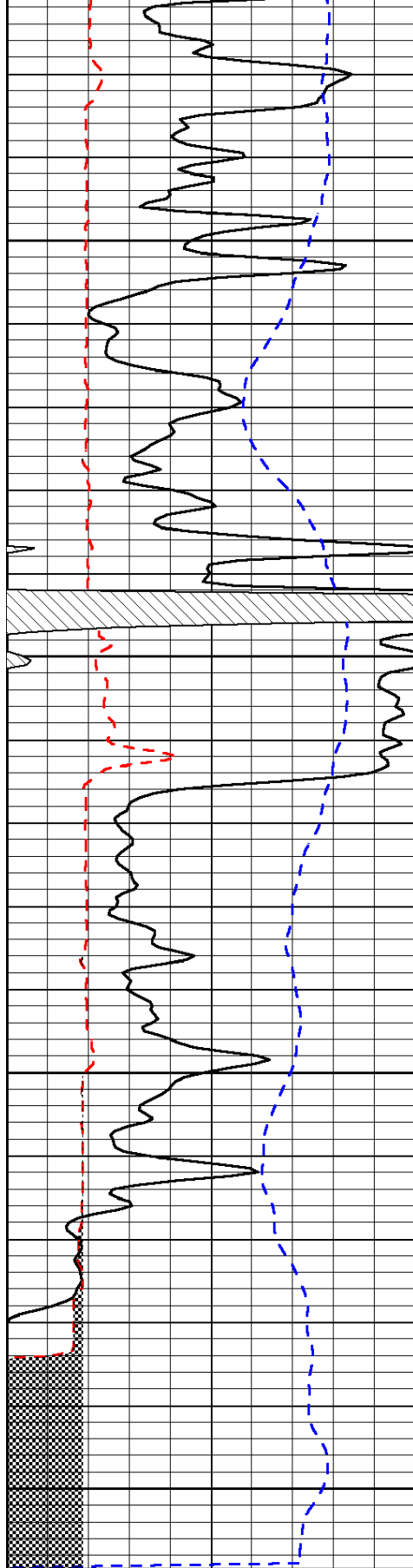
4400

4450

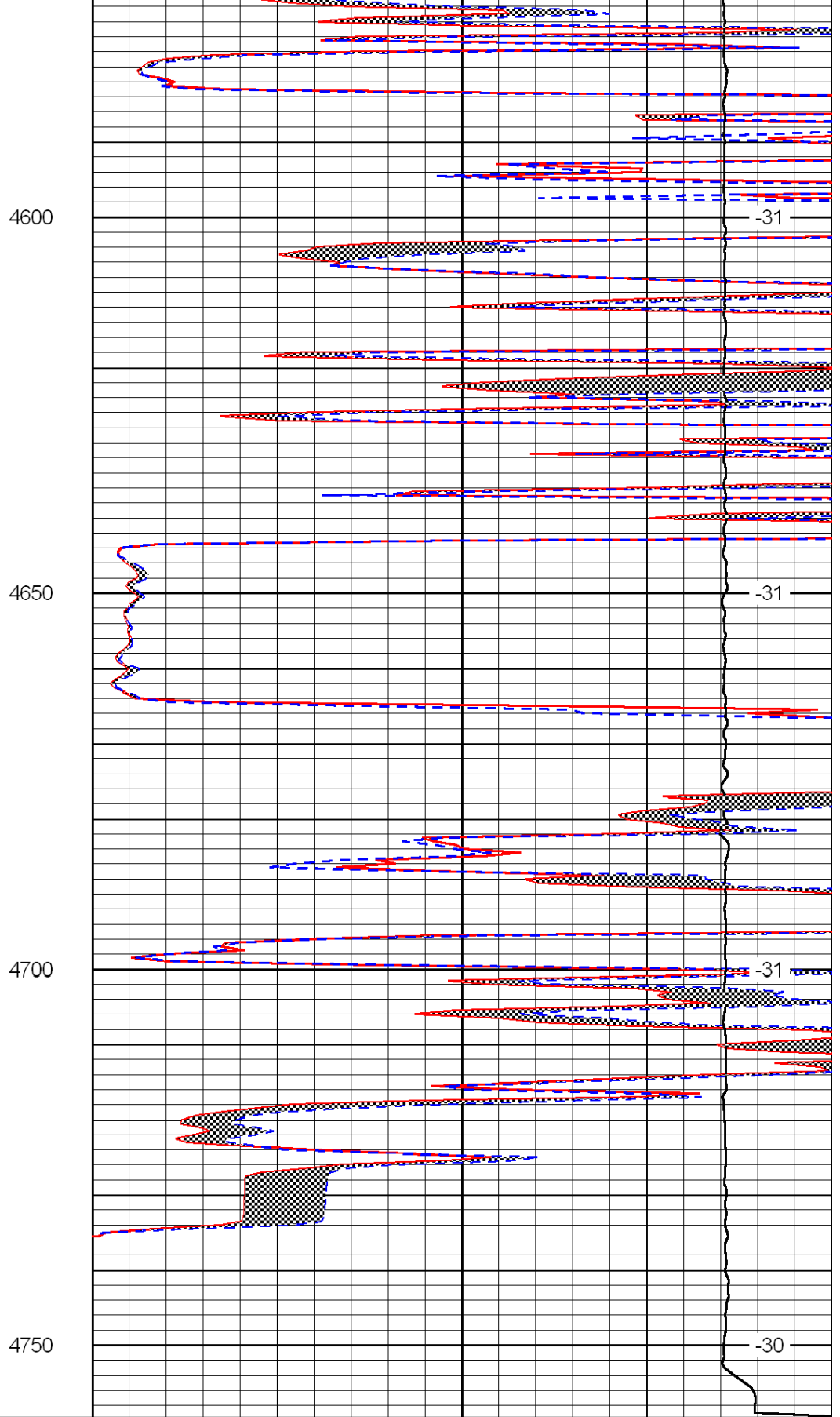
4500

4550





0	Gamma Ray	150
6	Micro Log Caliper (GAPI)	16
-200	SP (mV)	0



0	Micro Inverse 1 X 1	40
0	Micro Normal 2''	40
15000	Line Weight	0

LSPD