



DIGITAL LOG (785) 625-3858

Dual Induction Log

API No.	15-109-20,890-00-00	
Company	Russell Oil, Inc.	
Well	Brian Beckman #1-36	
Field	Wildcat	
County	Logan	State Kansas
Location	SW NE NE SE 2270' FSL & 620' FEL	
Sec: 36	Twp: 12 S	Rge: 34 W
Other Services	CNL / CDL MEL / BHCS	

Permanent Datum	Ground Level	Elevation 3077
Log Measured From	Kelly Bushing	11 Ft. Above Perm. Datum
Drilling Measured From	Kelly Bushing	
Date	4/24/2010	

Run Number	One	
Depth Driller	4750	
Depth Logger	4753	
Bottom Logged Interval	4752	
Top Log Interval	250	
Casing Driller	8.625 @ 296	
Casing Logger	294	
Bit Size	7.875	
Type Fluid in Hole	Chemical	
Salinity, ppm CL	5.000	
Density / Viscosity	9.3 53	
pH / Fluid Loss	10.0 8.8	
Source of Sample	Flowline	
Rm @ Meas. Temp	.47 @ 55	
Rmf @ Meas. Temp	.35 @ 55	
Rmc @ Meas. Temp	.63 @ 55	
Source of Rmf / Rmc	Charts	
Rm @ BHT	.21 @ 123	
Operating Rig Time	4 Hours	
Max Rec. Temp. F	123	
Equipment Number	15	
Location	Hays	
Recorded By	T. Martin	
Witnessed By	Steven D. Angle	Kevin J. Bailey

<<< Fold Here >>>

All interpretations are opinions based on inferences from electrical or other measurements and we cannot and do not guarantee the accuracy or correctness of any interpretation, and we shall not, except in the case of gross or willful negligence on our part, be liable or responsible for any loss, costs, damages, or expenses incurred or sustained by anyone resulting from any interpretation made by any of our officers, agents or employees. These interpretations are also subject to our general terms and conditions set out in our current Price Schedule.

Comments

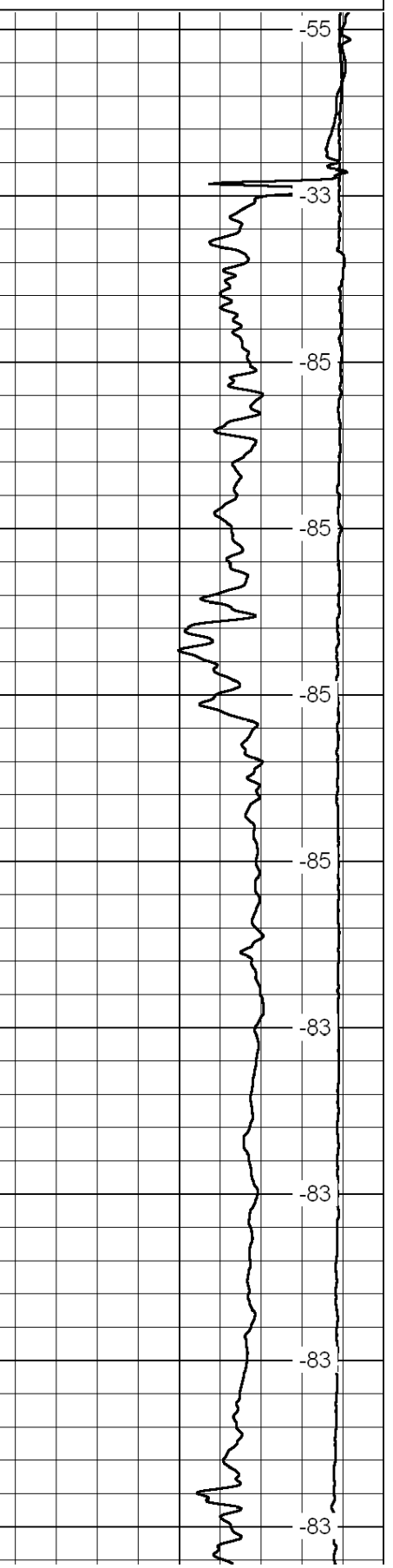
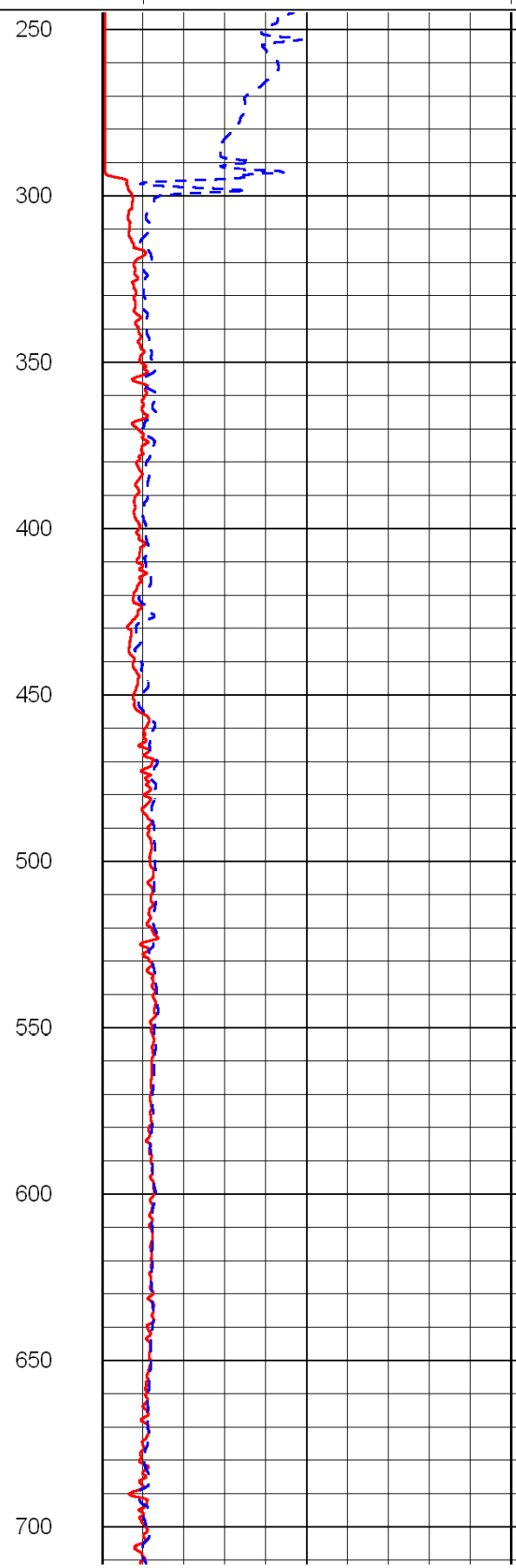
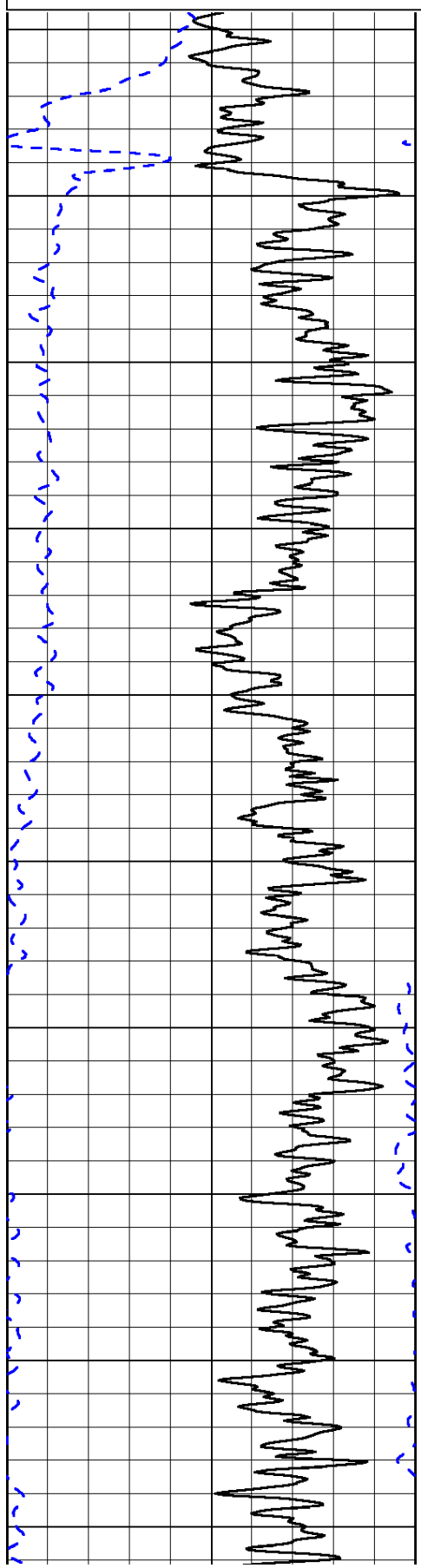
Thank you for using Log-Tech, Inc.
(785) 625-3858

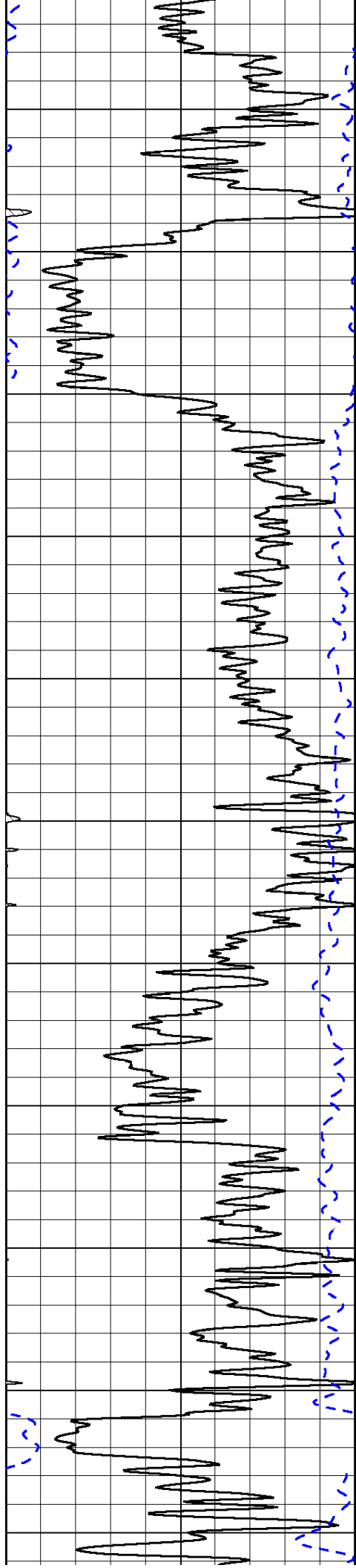
Monument, W side, 10 S to Seneca Rd, 1/2 W, N into

0	Gamma Ray	150
-200	SP (mV)	0

0	Shallow Resistivity	50
0	Deep Resistivity	50
1000	Conductivity	0
15000	Line Tension	0
50	Shallow Resistivity	500
50	Deep Resistivity	500

LSPD





750

800

850

900

950

1000

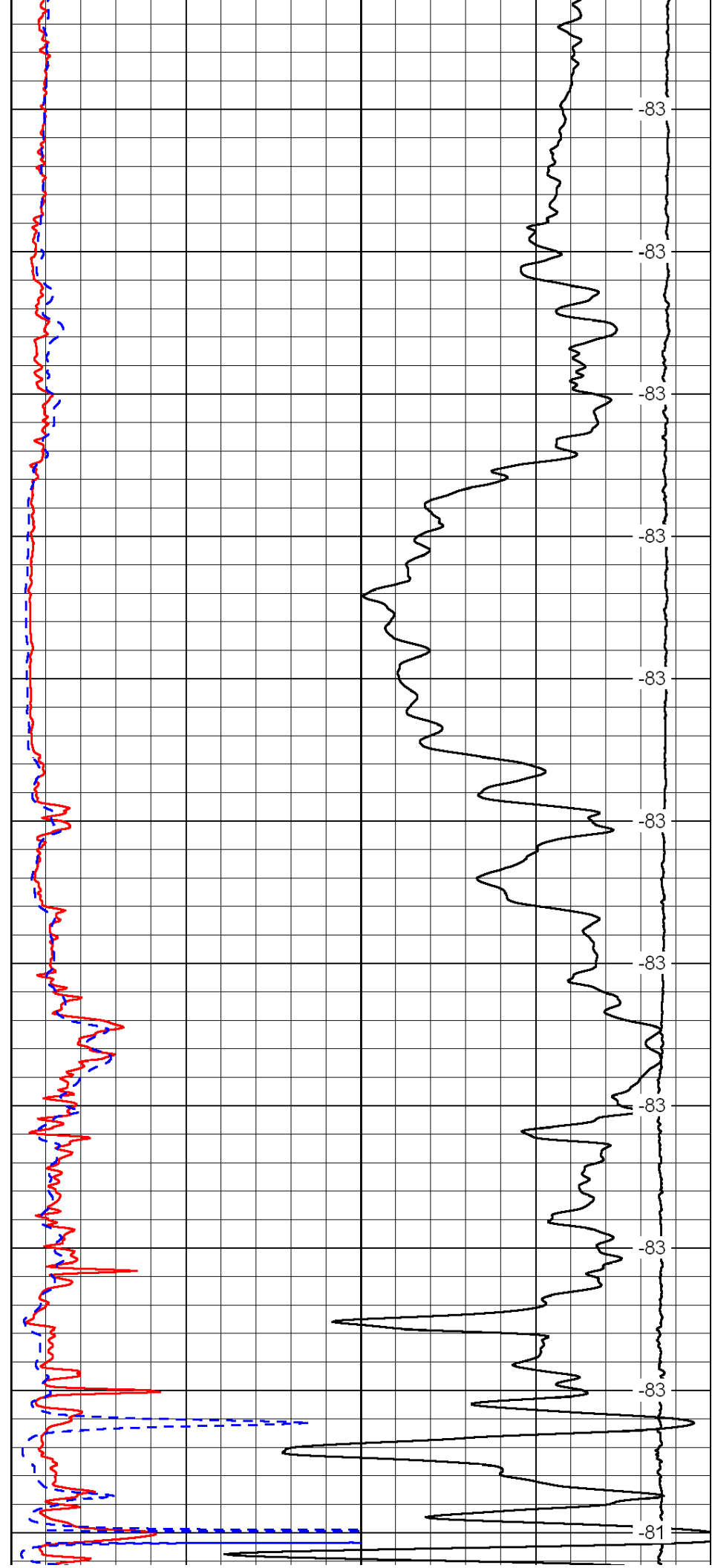
1050

1100

1150

1200

1250



-83

-83

-83

-83

-83

-83

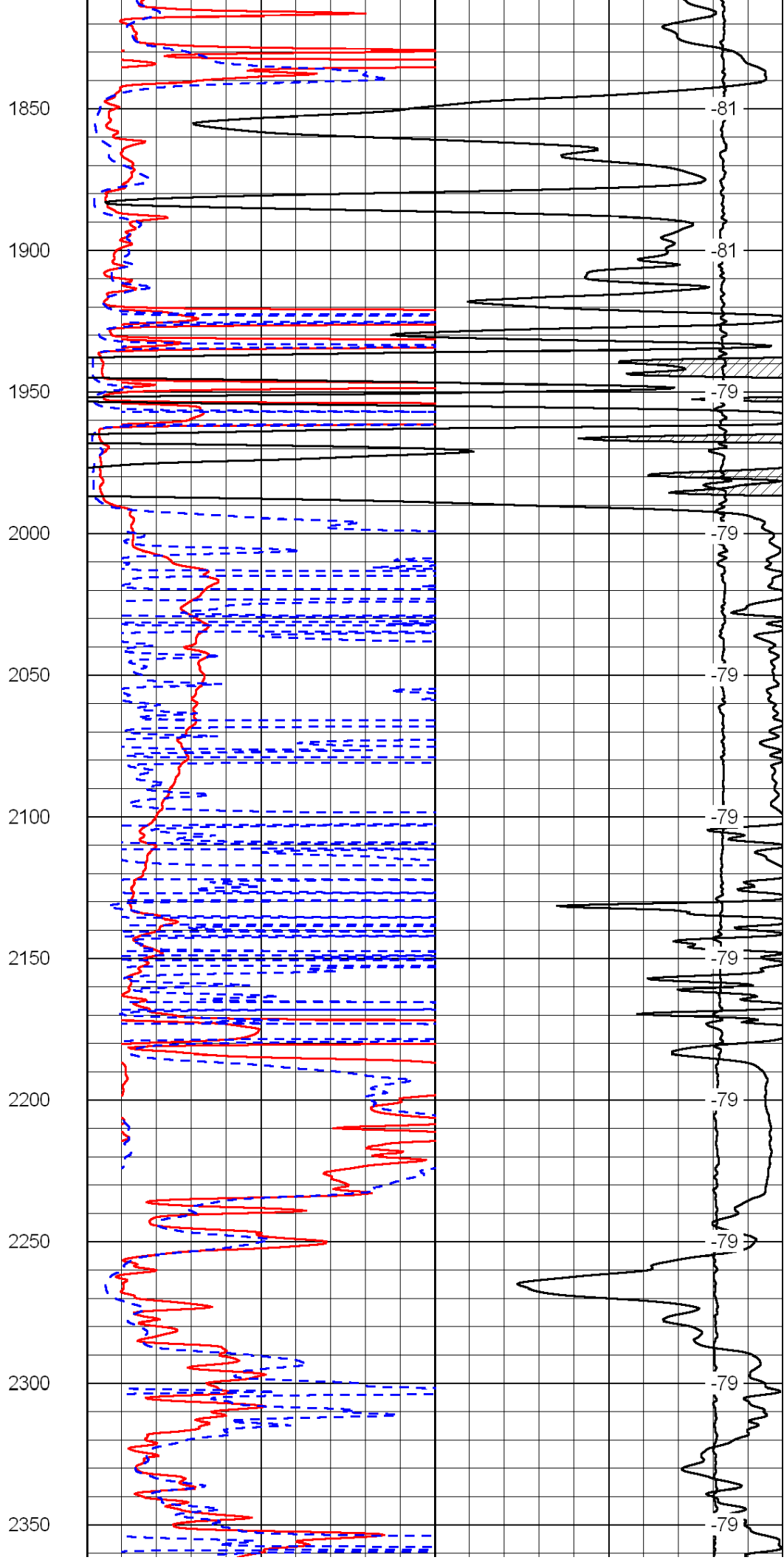
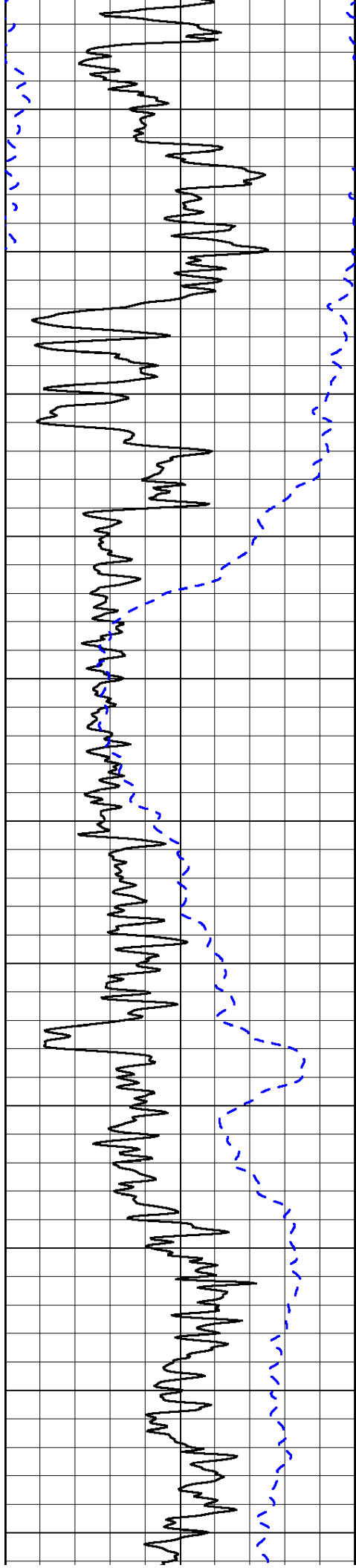
-83

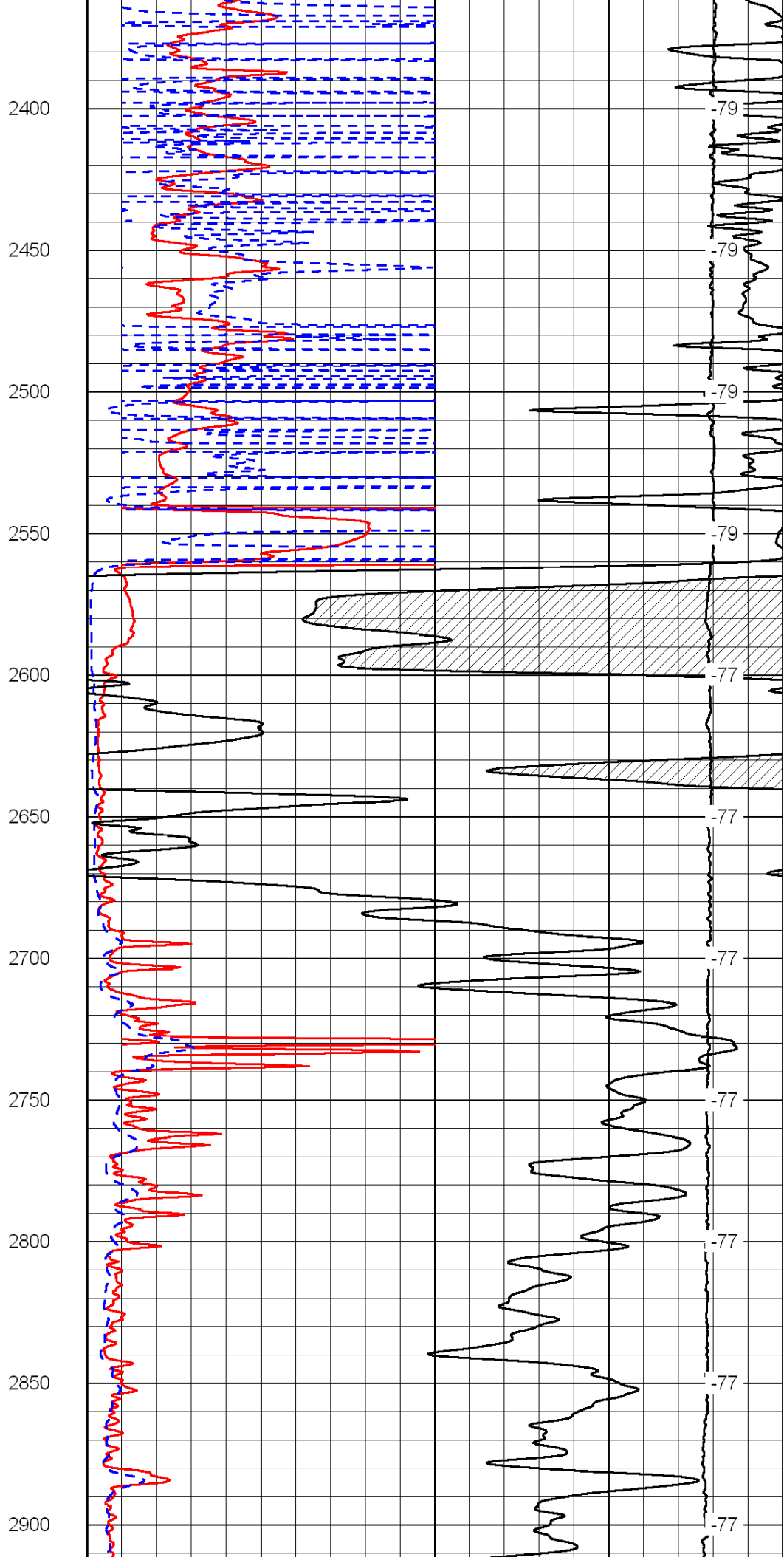
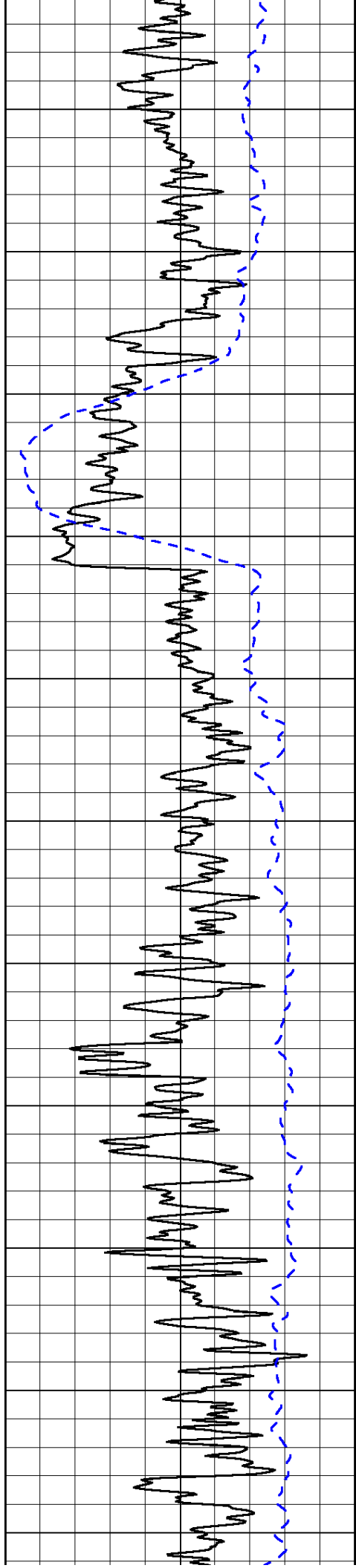
-83

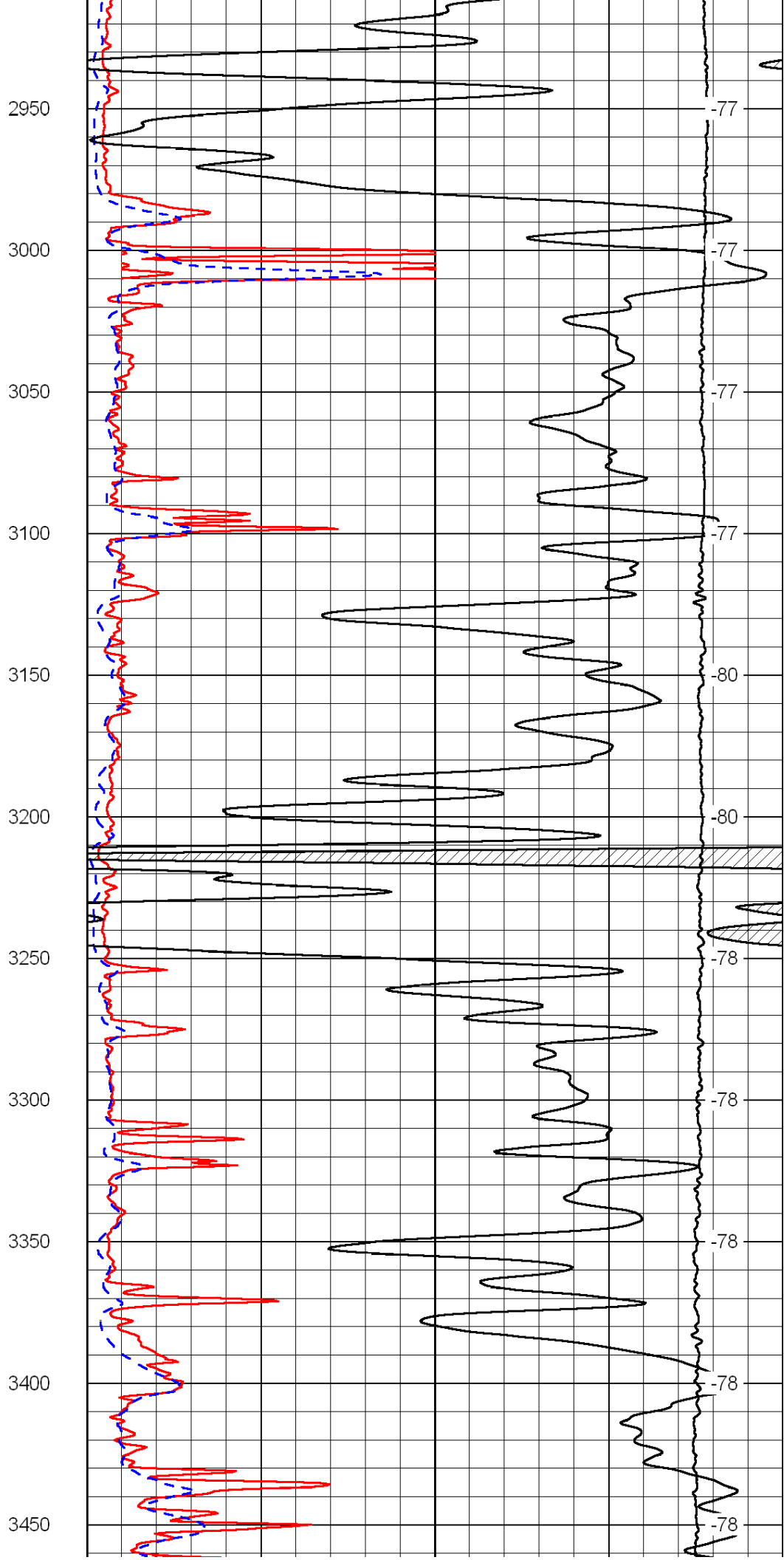
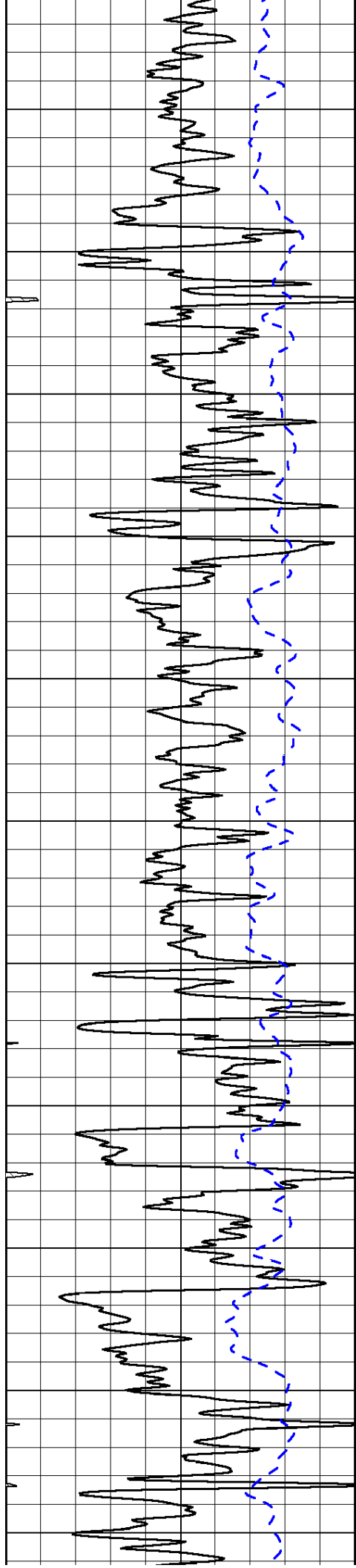
-83

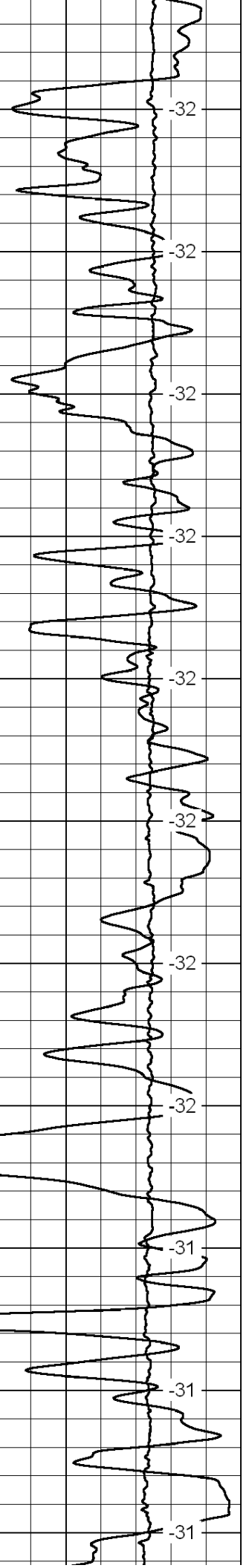
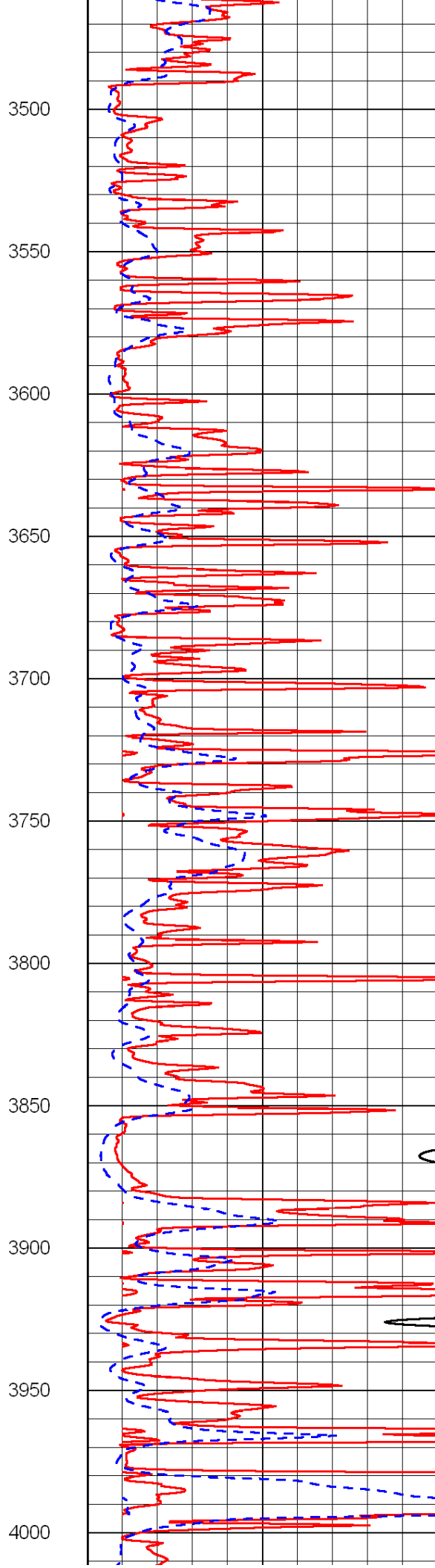
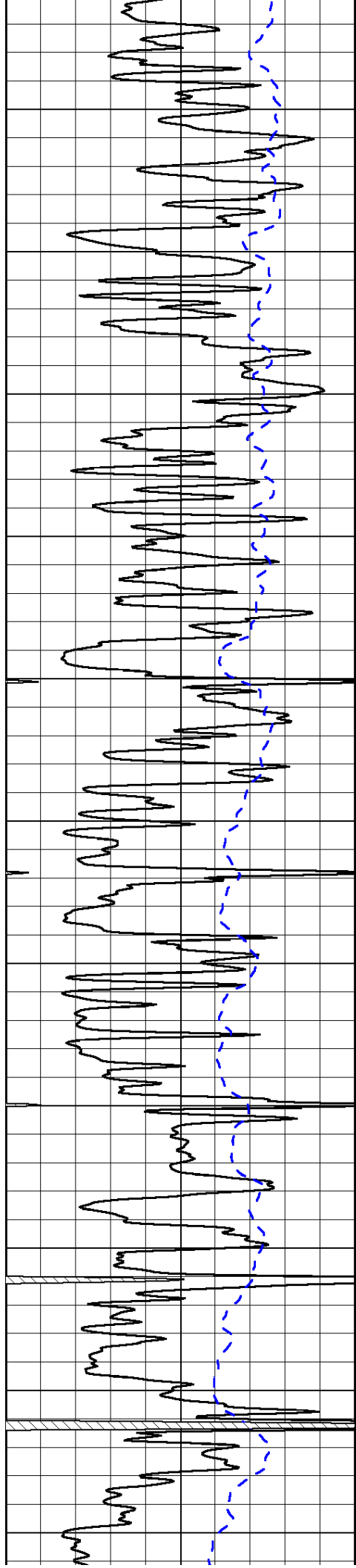
-83

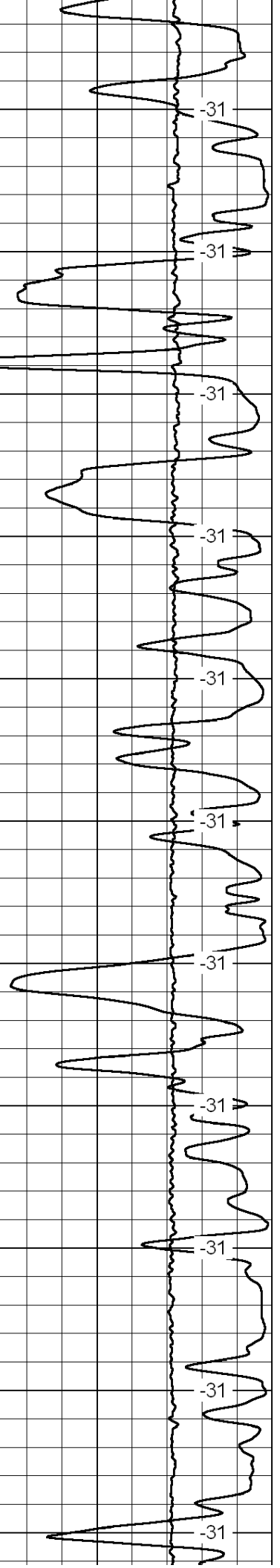
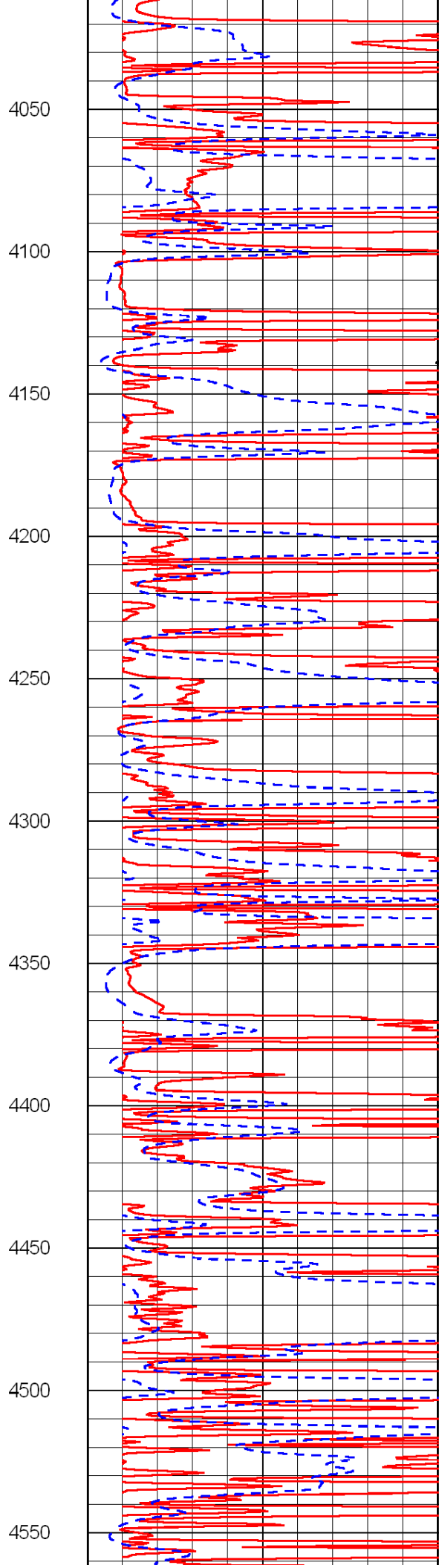
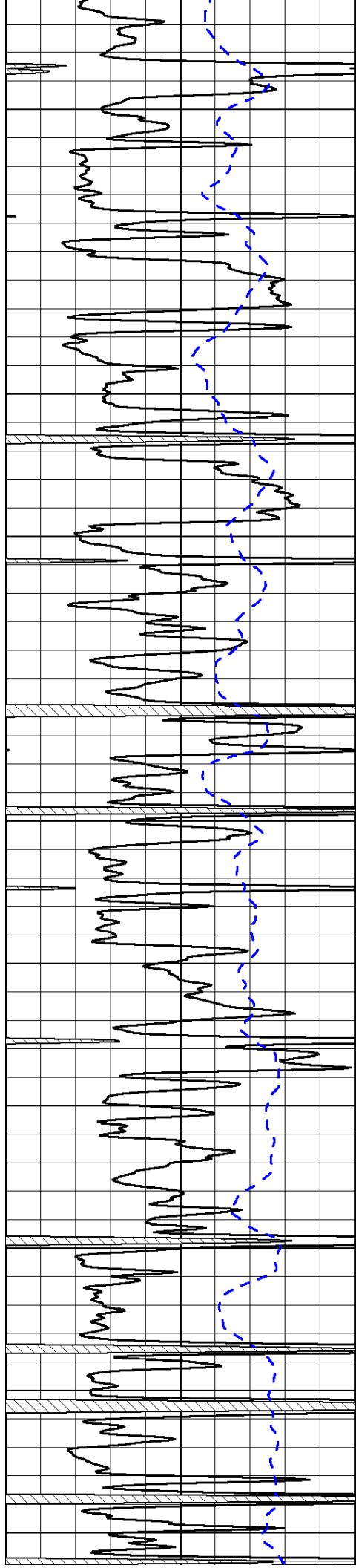
-81





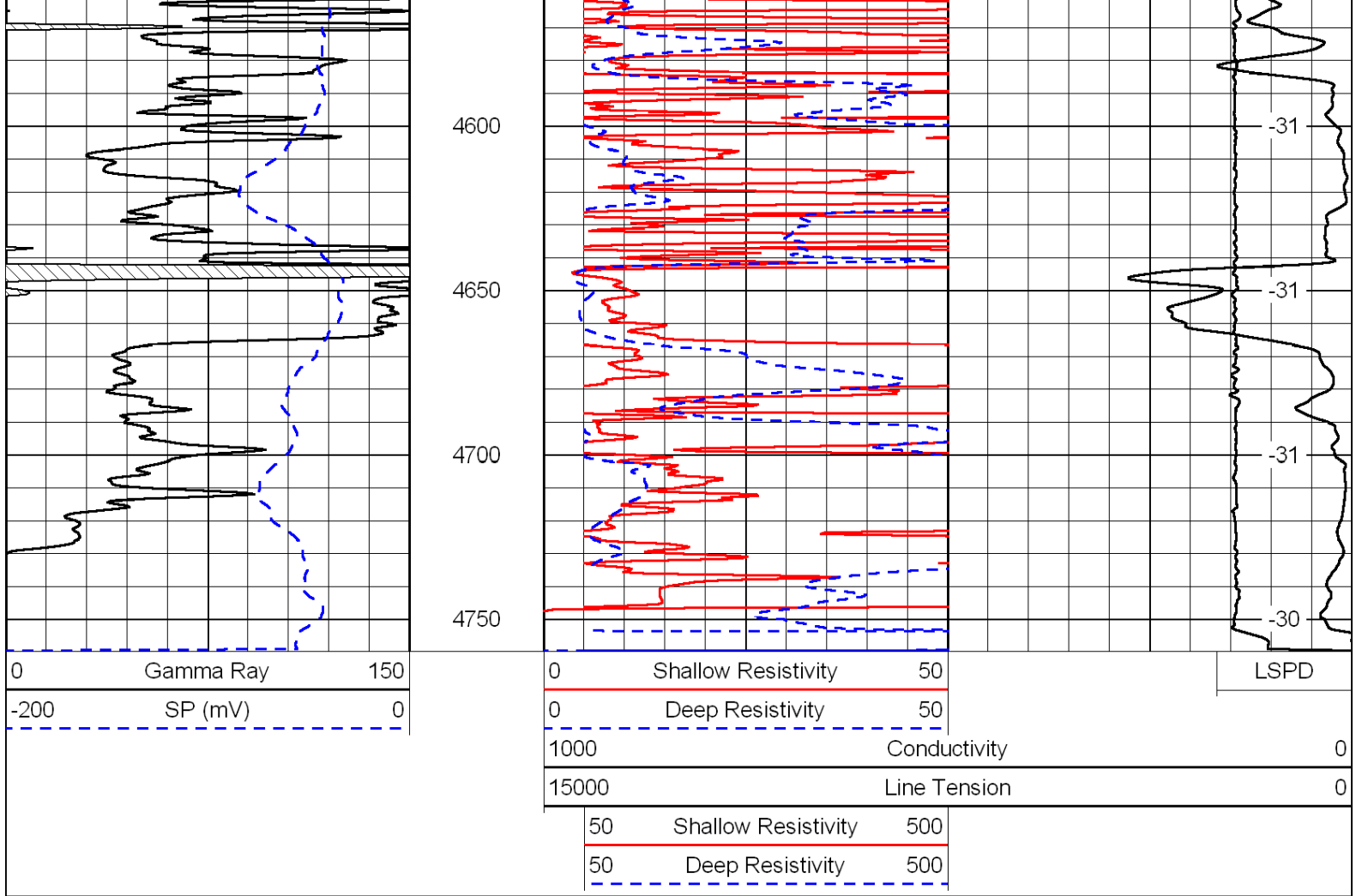




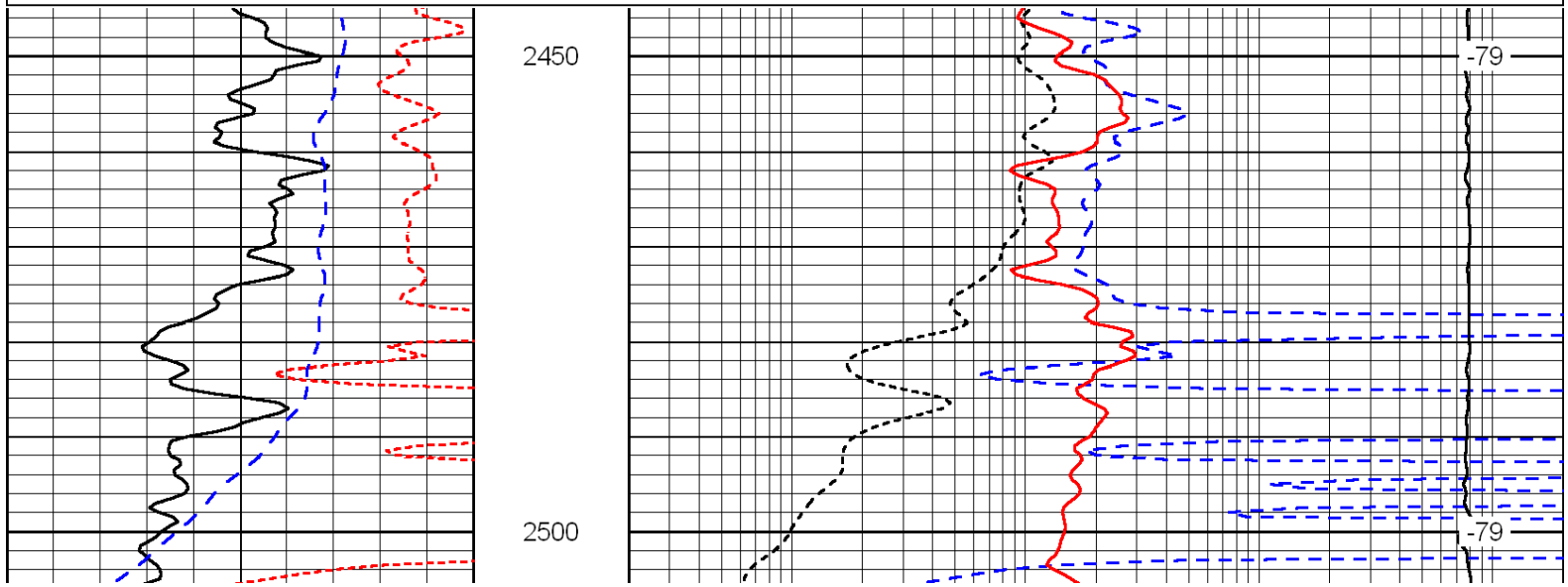
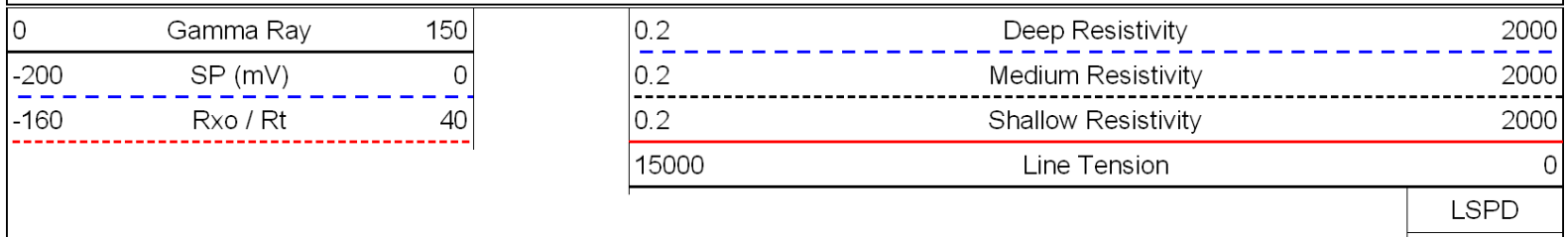


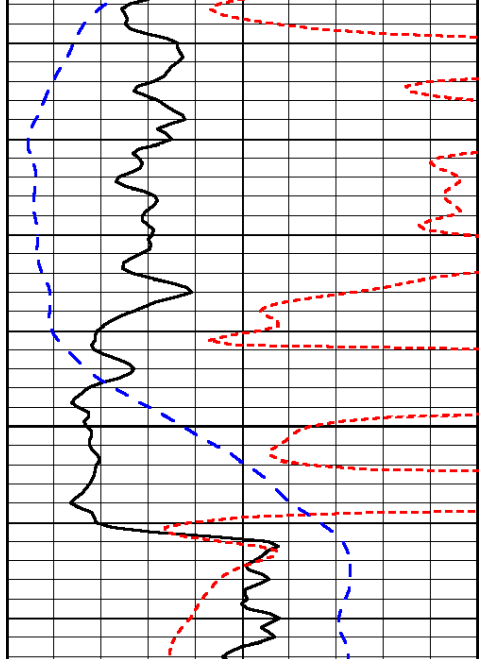
4050
4100
4150
4200
4250
4300
4350
4400
4450
4500
4550

-31
-31
-31
-31
-31
-31
-31
-31
-31
-31
-31



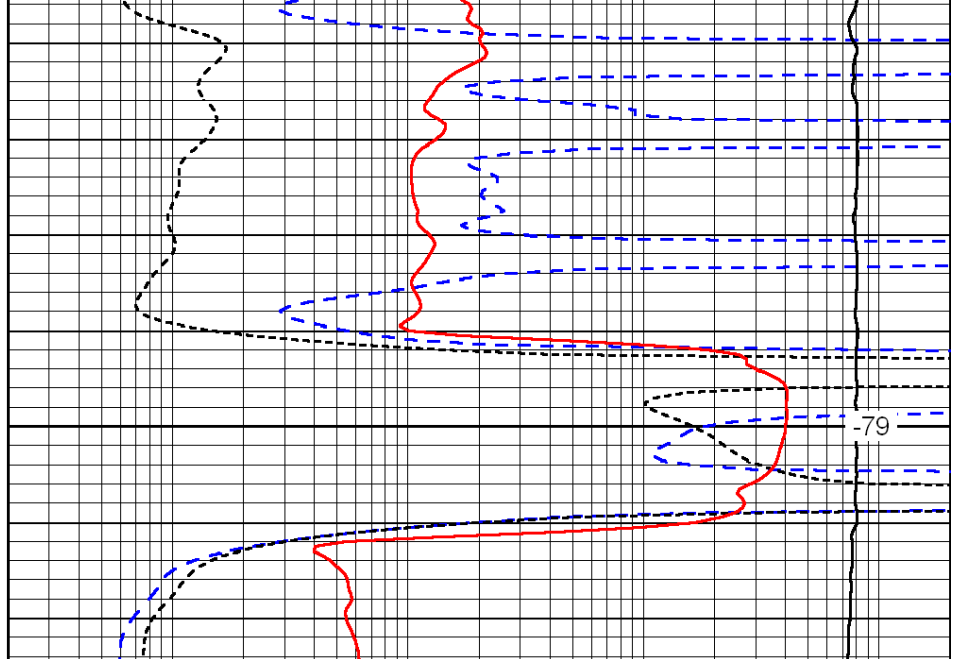
Database File: c:\warrior\data\russell_brian beckman #1-36\rushd.db
 Dataset Pathname: dil/russtk
 Presentation Format: dil
 Dataset Creation: Sat Apr 24 15:14:46 2010
 Charted by: Depth in Feet scaled 1:240





0	Gamma Ray	150
-200	SP (mV)	0
-160	Rxo / Rt	40

2550



0.2	Deep Resistivity	2000
0.2	Medium Resistivity	2000
0.2	Shallow Resistivity	2000
15000	Line Tension	0

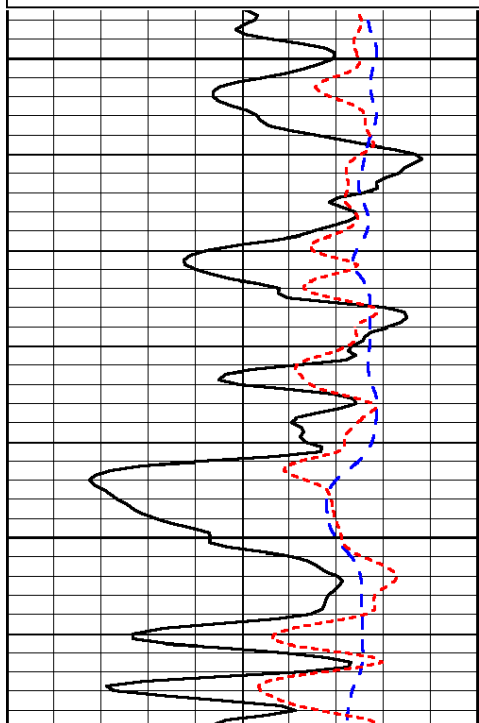
LSPD

Database File: c:\warrior\data\russell_brian beckman #1-36\rusht.db
 Dataset Pathname: dil/rushtk
 Presentation Format: dil
 Dataset Creation: Sat Apr 24 15:14:46 2010
 Charted by: Depth in Feet scaled 1:240

0	Gamma Ray	150
-200	SP (mV)	0
-160	Rxo / Rt	40

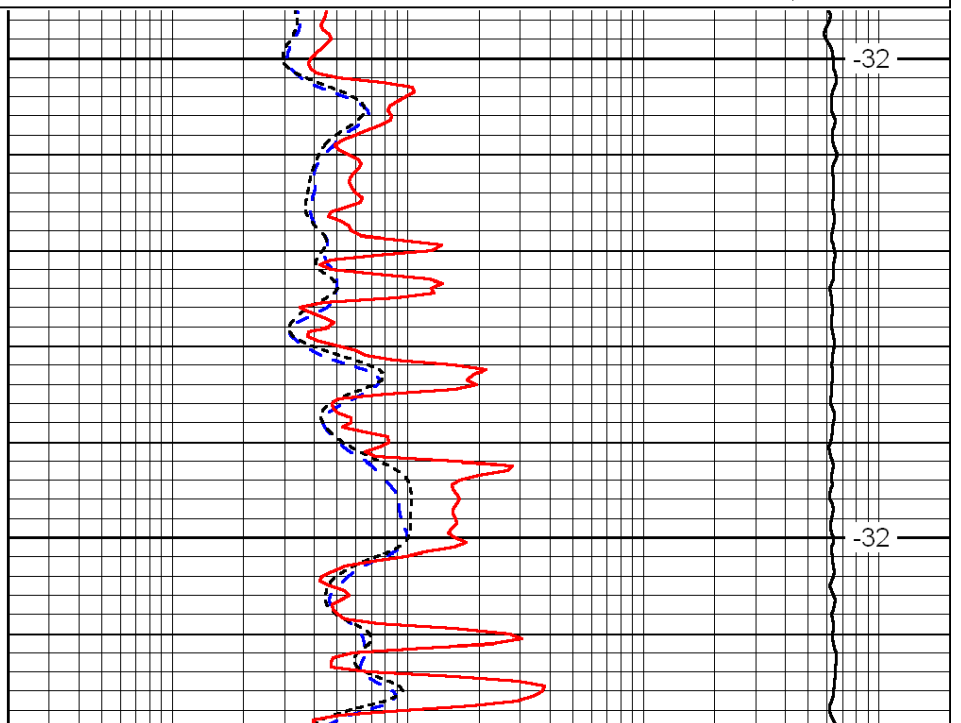
0.2	Deep Resistivity	2000
0.2	Medium Resistivity	2000
0.2	Shallow Resistivity	2000
15000	Line Tension	0

LSPD



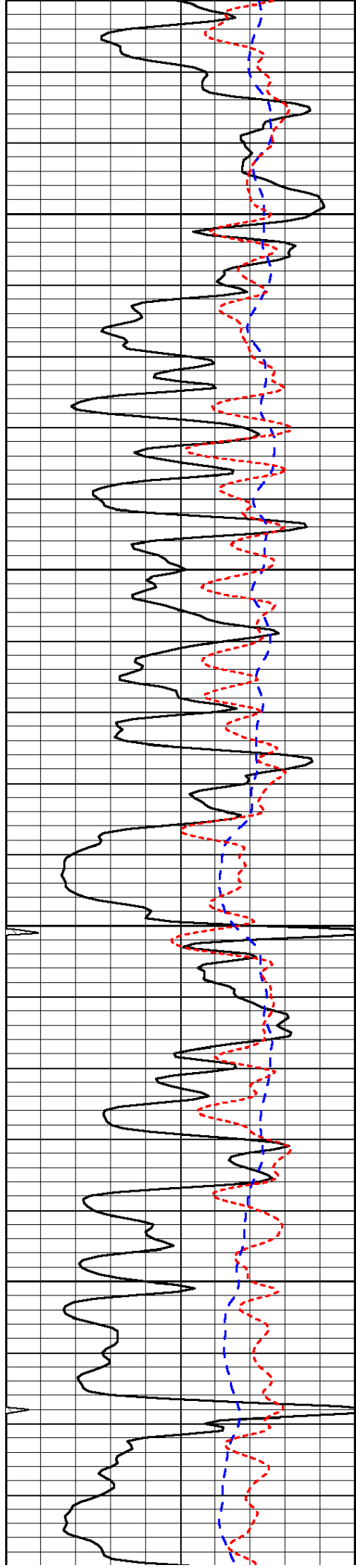
3500

3550



-32

-32

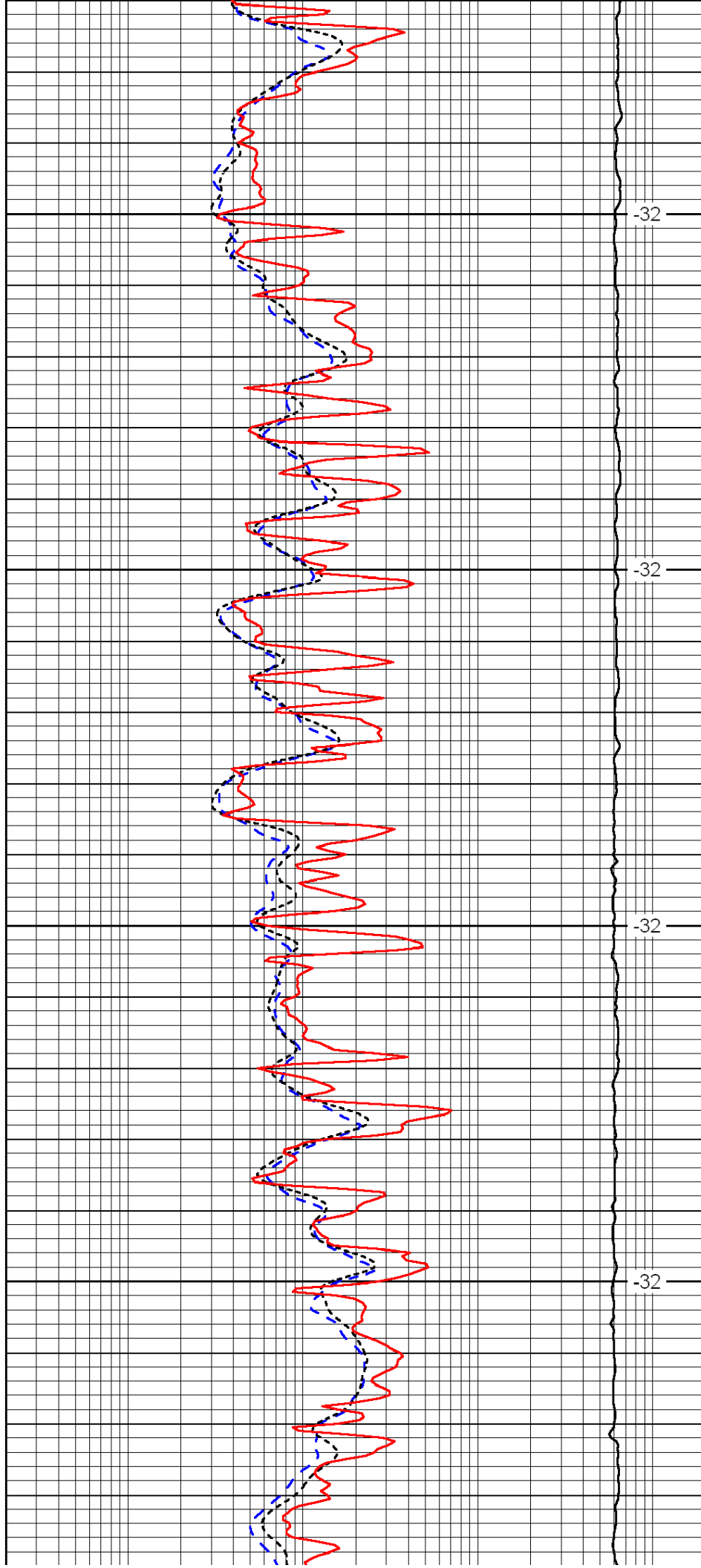


3600

3650

3700

3750

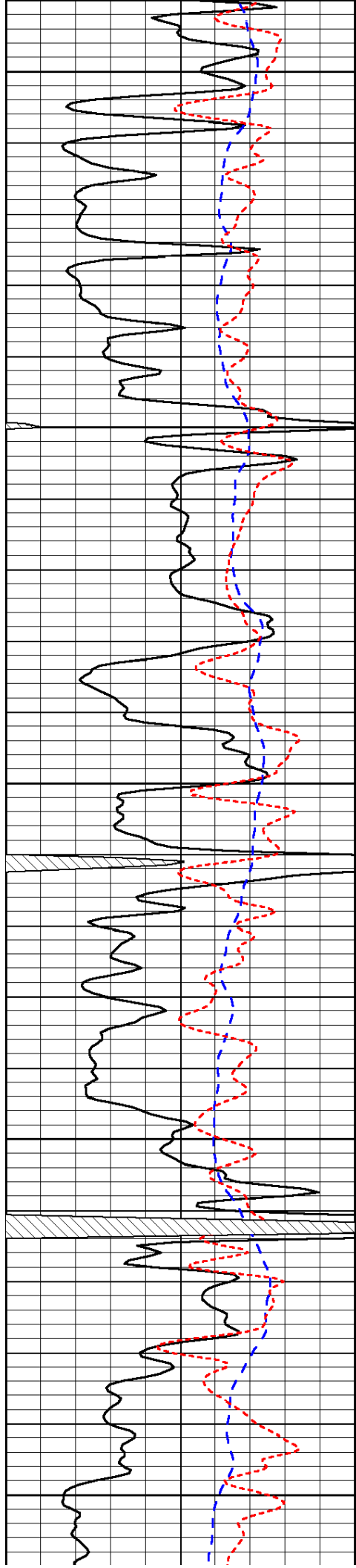


-32

-32

-32

-32



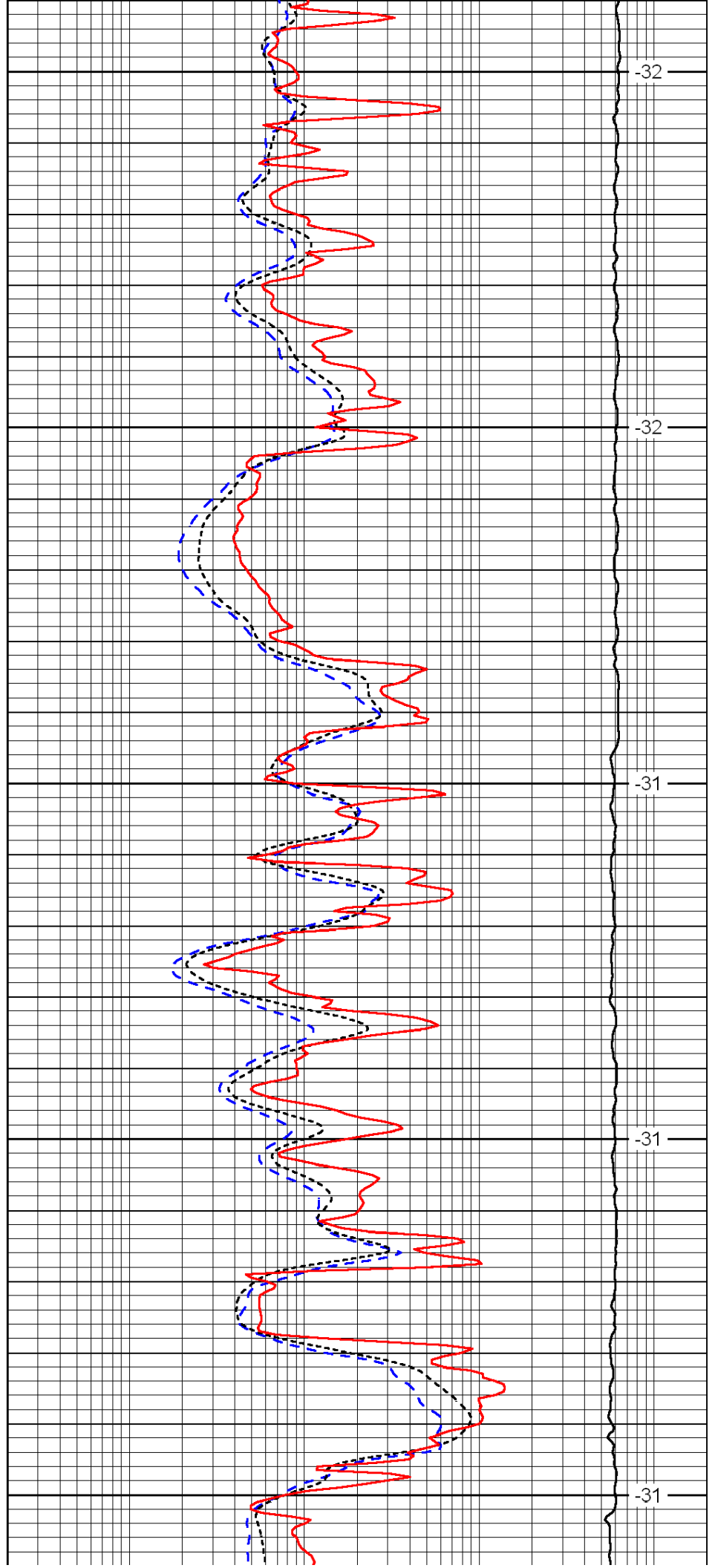
3800

3850

3900

3950

4000



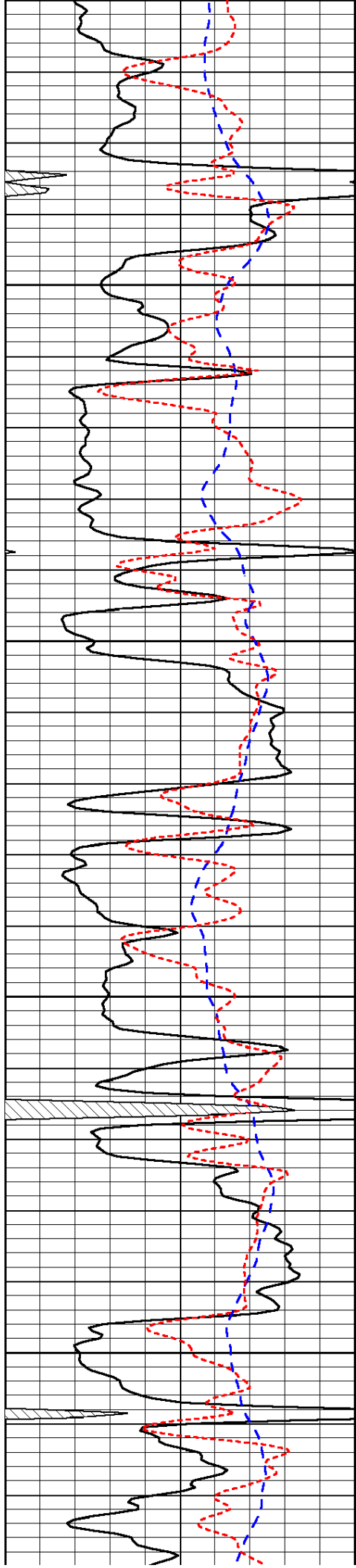
-32

-32

-31

-31

-31

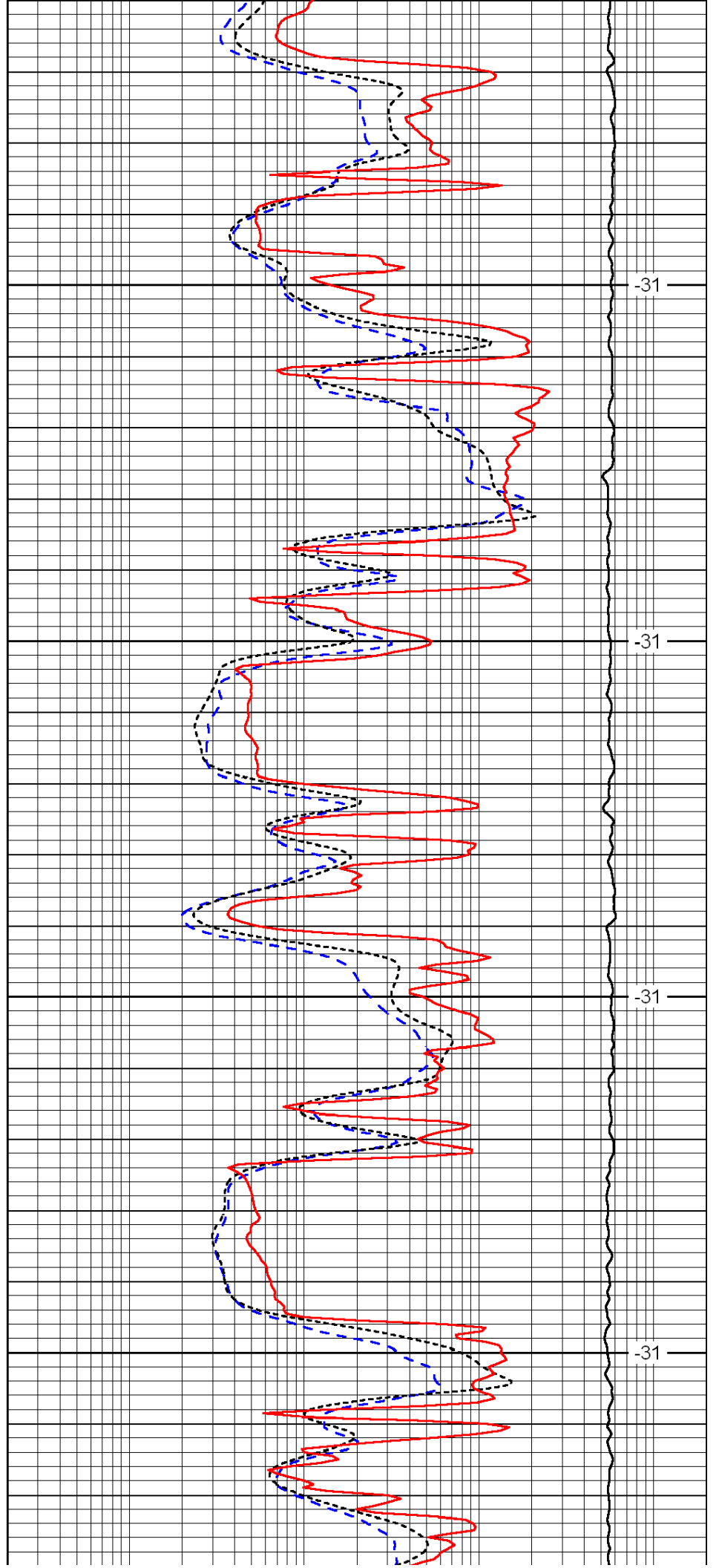


4050

4100

4150

4200

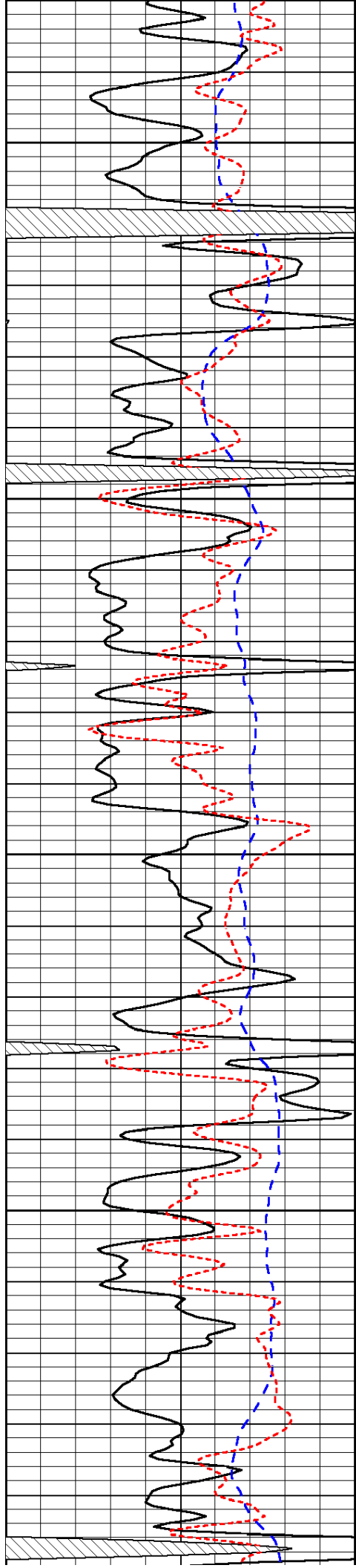


-31

-31

-31

-31



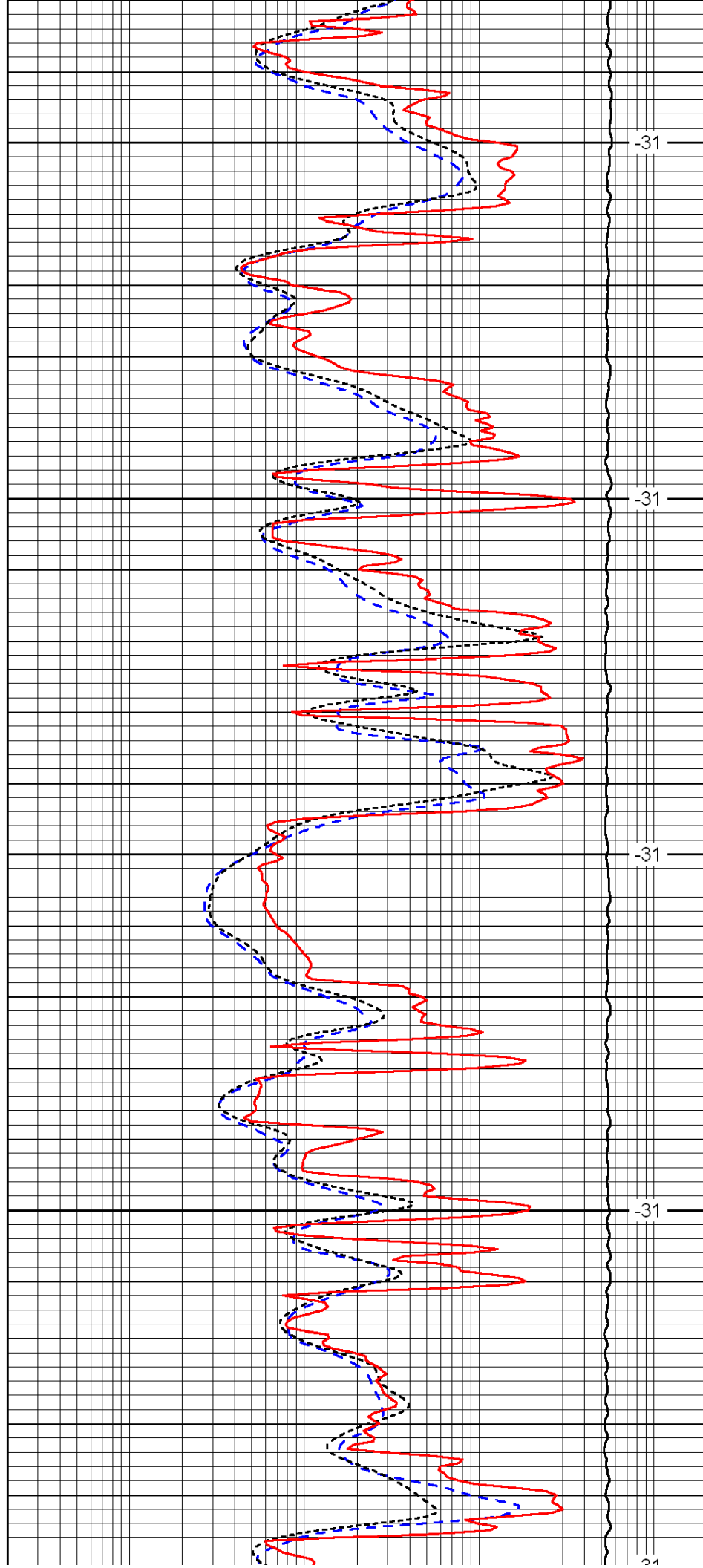
4250

4300

4350

4400

4450



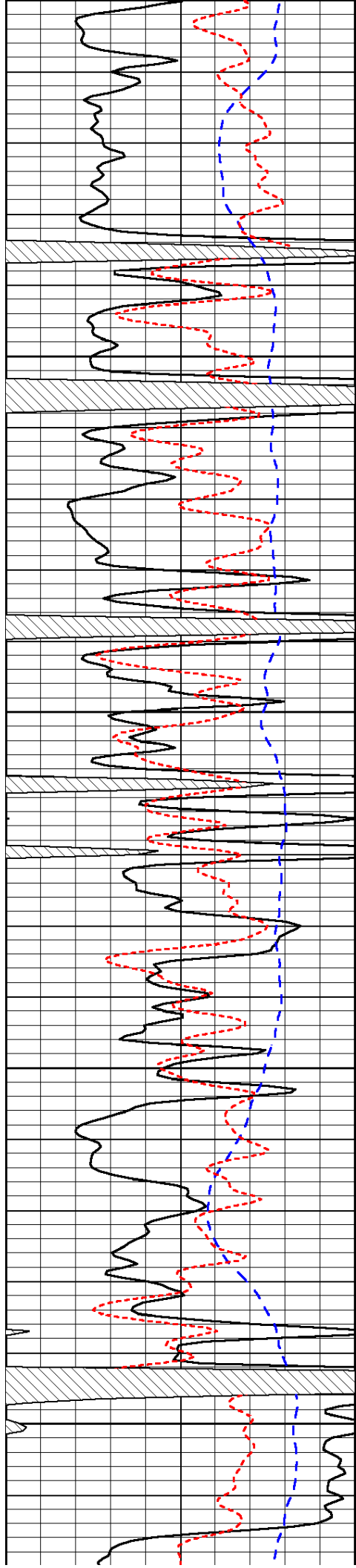
-31

-31

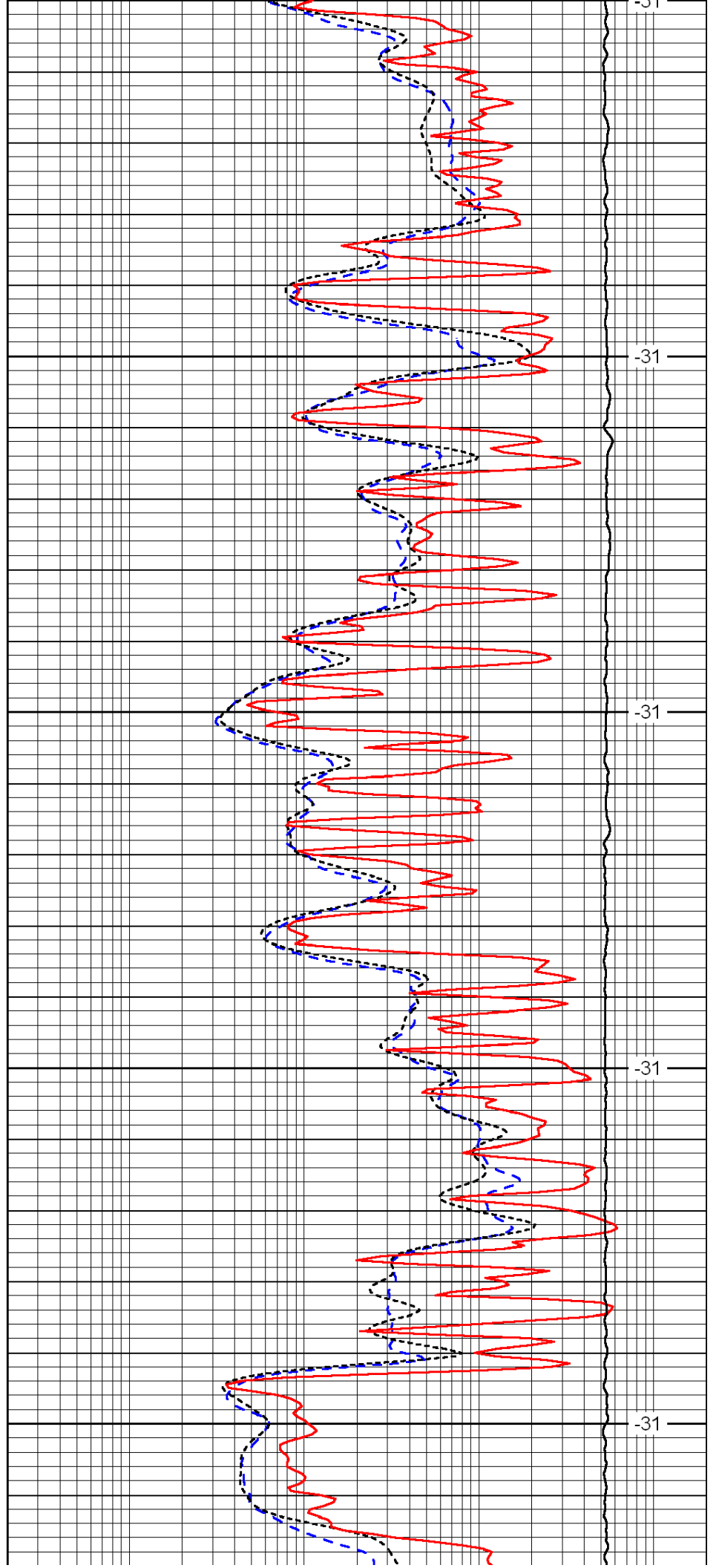
-31

-31

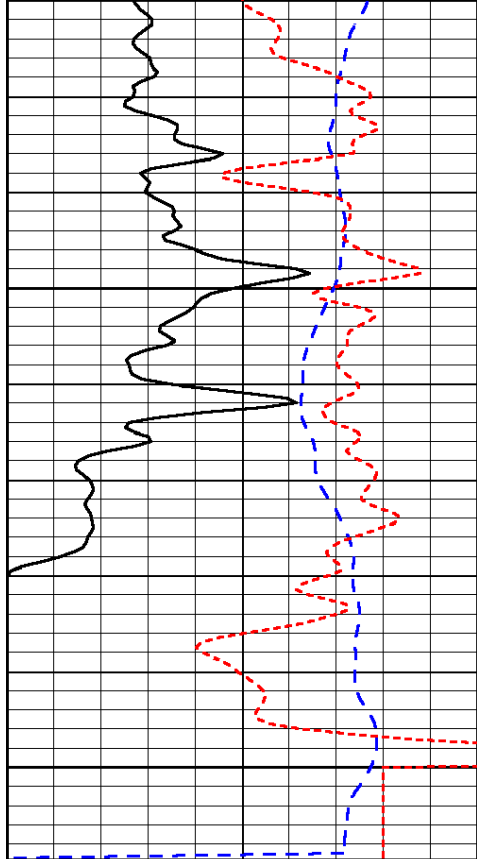
-31



4450
4500
4550
4600
4650



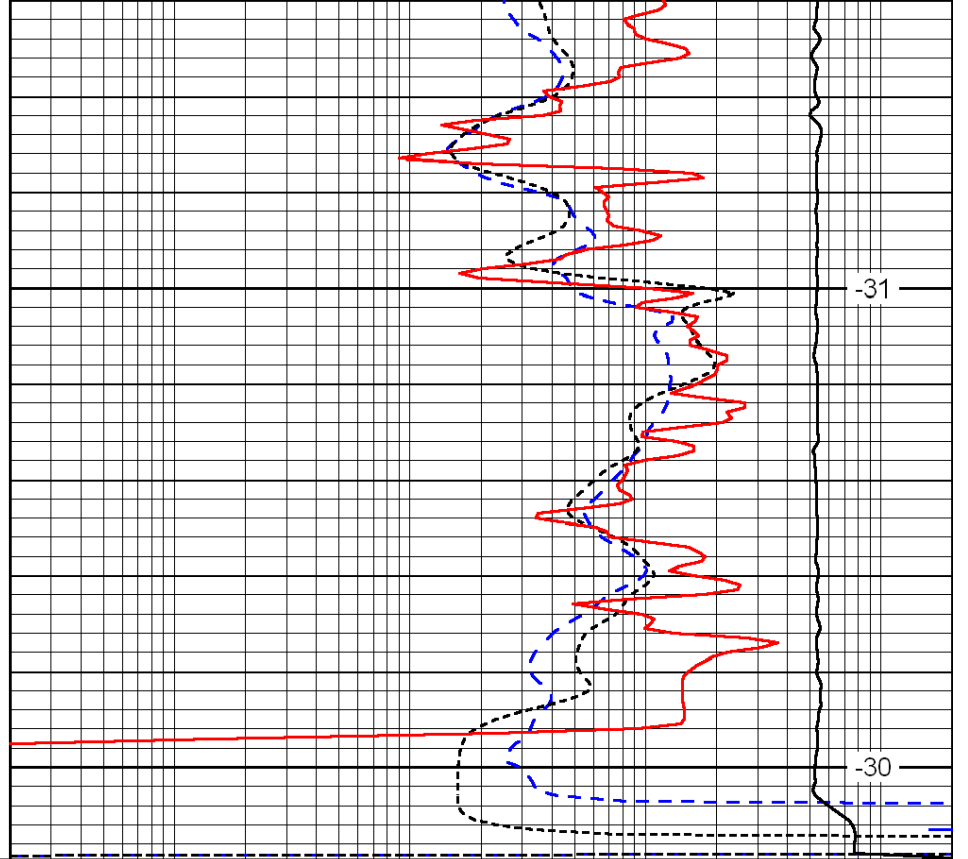
-31
-31
-31
-31



0	Gamma Ray	150
-200	SP (mV)	0
-160	Rxo / Rt	40

4700

4750



-31

-30

0.2	Deep Resistivity	2000
0.2	Medium Resistivity	2000
0.2	Shallow Resistivity	2000
15000	Line Tension	0

LSPD