



Microresistivity Log

DIGITAL LOG (785) 625-3858

| | | | |
|------------------------|--------------------------|--------------------------|-------------------------------------|
| API No. | 15-025-21,500-00-00 | | |
| Company | Falcon Exploration, Inc. | | |
| Well | Swayze No. 1-30 (NE) | | |
| Field | Wildcat | | |
| County | Clark | State | Kansas |
| Location | 2280' FNL & 1730' FEL | | |
| Sec: | 30 | Twp: | 30S Rge: 22W |
| Permanent Datum | Ground Level | Elevation | 2430 |
| Log Measured From | Kelly Bushing | 10 Ft. Above Perm. Datum | |
| Drilling Measured From | Kelly Bushing | | |
| | | Other Services | CNL/CDL DIL/BHCS |
| | | Elevation | K.B. 2440 D.F. 2430 G.L. 2430 |

| | | |
|------------------------|---------------|-------|
| Date | 4/22/2010 | |
| Run Number | Two | |
| Depth Driller | 6130 | |
| Depth Logger | 6141 | |
| Bottom Logged Interval | 6140 | |
| Top Log Interval | 4150 | |
| Casing Driller | 8.675 @ 686 | |
| Casing Logger | 686 | |
| Bit Size | 7.875 | |
| Type Fluid in Hole | Chemical | |
| Salinity, ppm CL | 10,100 | |
| Density / Viscosity | 9.1 | 49 |
| pH / Fluid Loss | 9.0 | 9.6 |
| Source of Sample | Flowline | |
| Rm @ Meas. Temp | .56 | @ 70 |
| Rmf @ Meas. Temp | .42 | @ 70 |
| Rmc @ Meas. Temp | .76 | @ 70 |
| Source of Rmf / Rmc | Charts | |
| Rm @ BHT | .28 | @ 139 |
| Operating Rig Time | 6 Hours | |
| Max Rec. Temp. F | 139 | |
| Equipment Number | 17 | |
| Location | Hays | |
| Recorded By | Mike Garrison | |
| Witnessed By | Keith Reavis | |

<<< Fold Here >>>

All interpretations are opinions based on inferences from electrical or other measurements and we cannot and do not guarantee the accuracy or correctness of any interpretation, and we shall not, except in the case of gross or willful negligence on our part, be liable or responsible for any loss, costs, damages, or expenses incurred or sustained by anyone resulting from any interpretation made by any of our officers, agents or employees. These interpretations are also subject to our general terms and conditions set out in our current Price Schedule.

Comments

Thank you for using Log-Tech, Inc.
(785) 625-3858

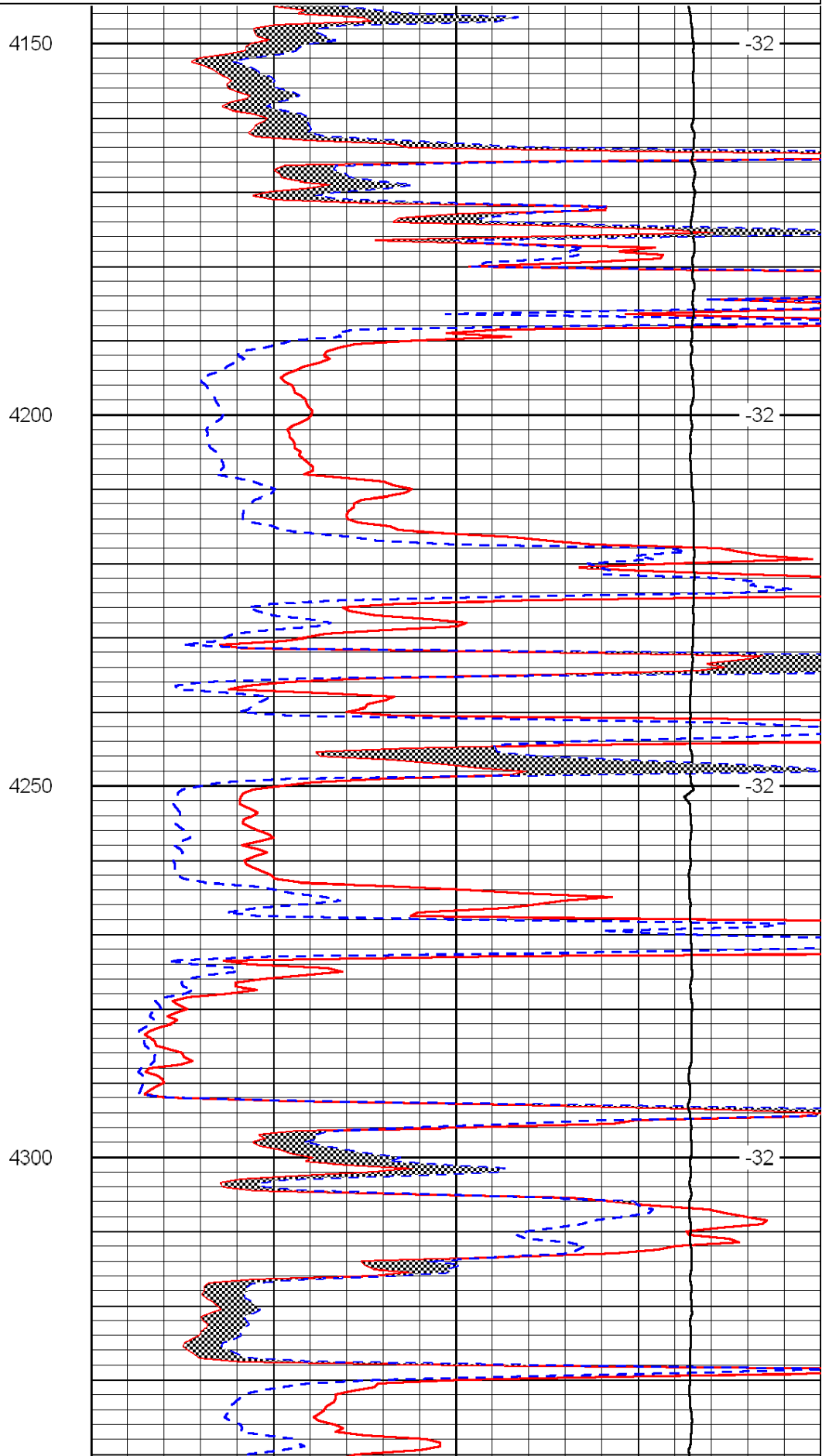
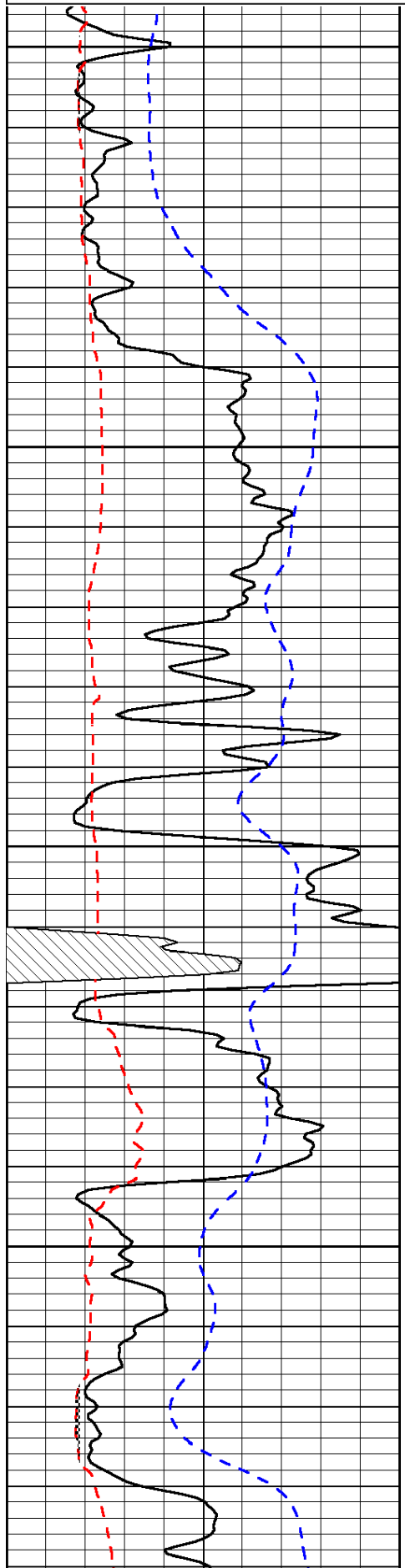
Kingsdown 9 South to Curve 1/8 West North Into

Database File: c:\warrior\data\falcon_swayze #1-30\falconhd.db
 Dataset Pathname: dil/falstck
 Presentation Format: micro
 Dataset Creation: Thu Apr 22 14:26:58 2010
 Charted by: Depth in Feet scaled 1:240

| | | |
|------|--------------------------|-----|
| 0 | Gamma Ray | 150 |
| 6 | Micro Log Caliper (GAPI) | 16 |
| -200 | SP (mV) | 0 |

| | | |
|-------|---------------------|----|
| 0 | Micro Inverse 1 X 1 | 40 |
| 0 | Micro Normal 2" | 40 |
| 15000 | Line Weight | 0 |

LSPD



4150

-32

4200

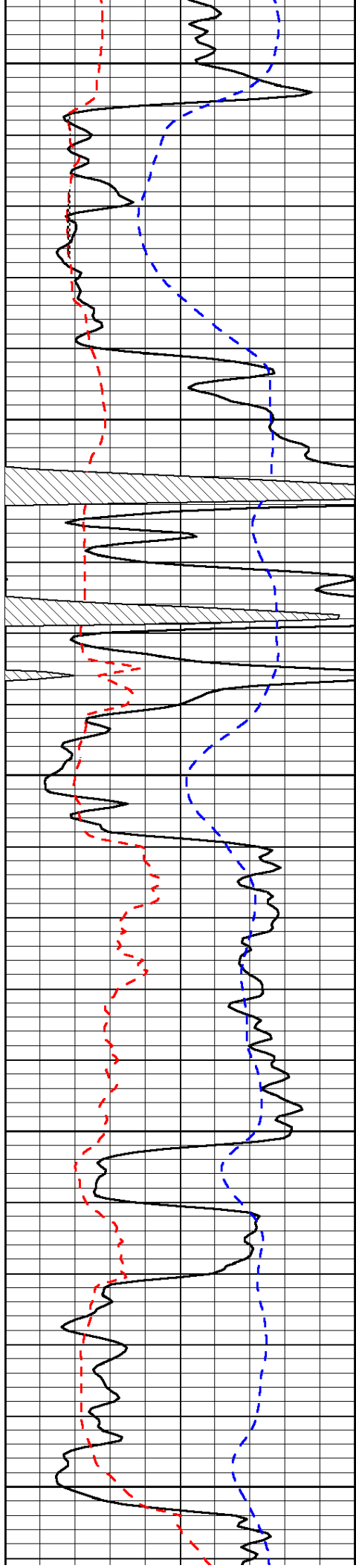
-32

4250

-32

4300

-32



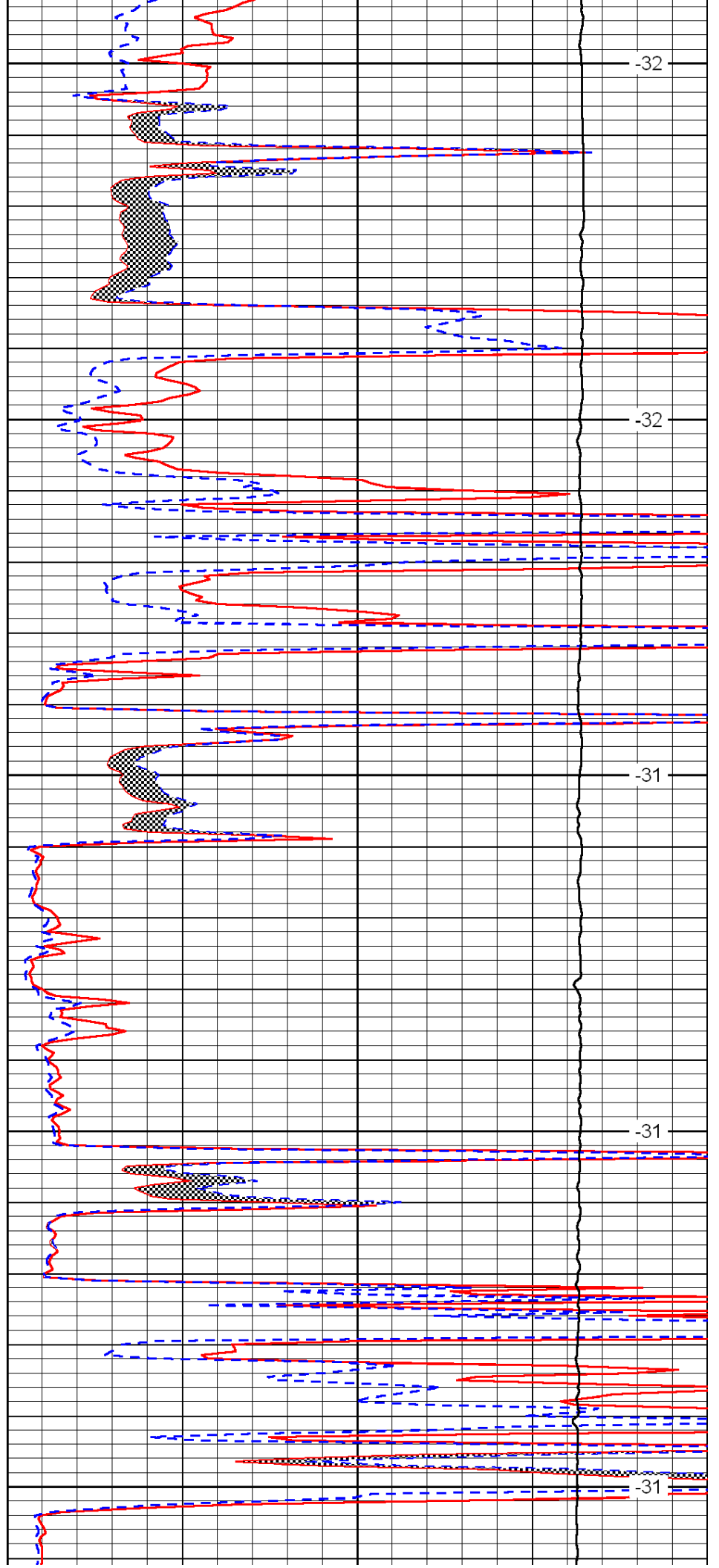
4350

4400

4450

4500

4550



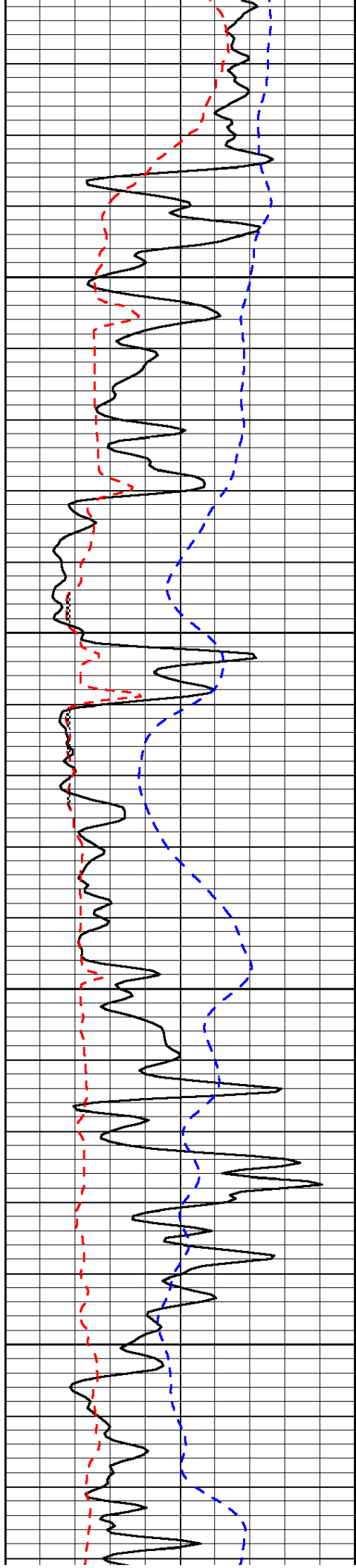
-32

-32

-31

-31

-31

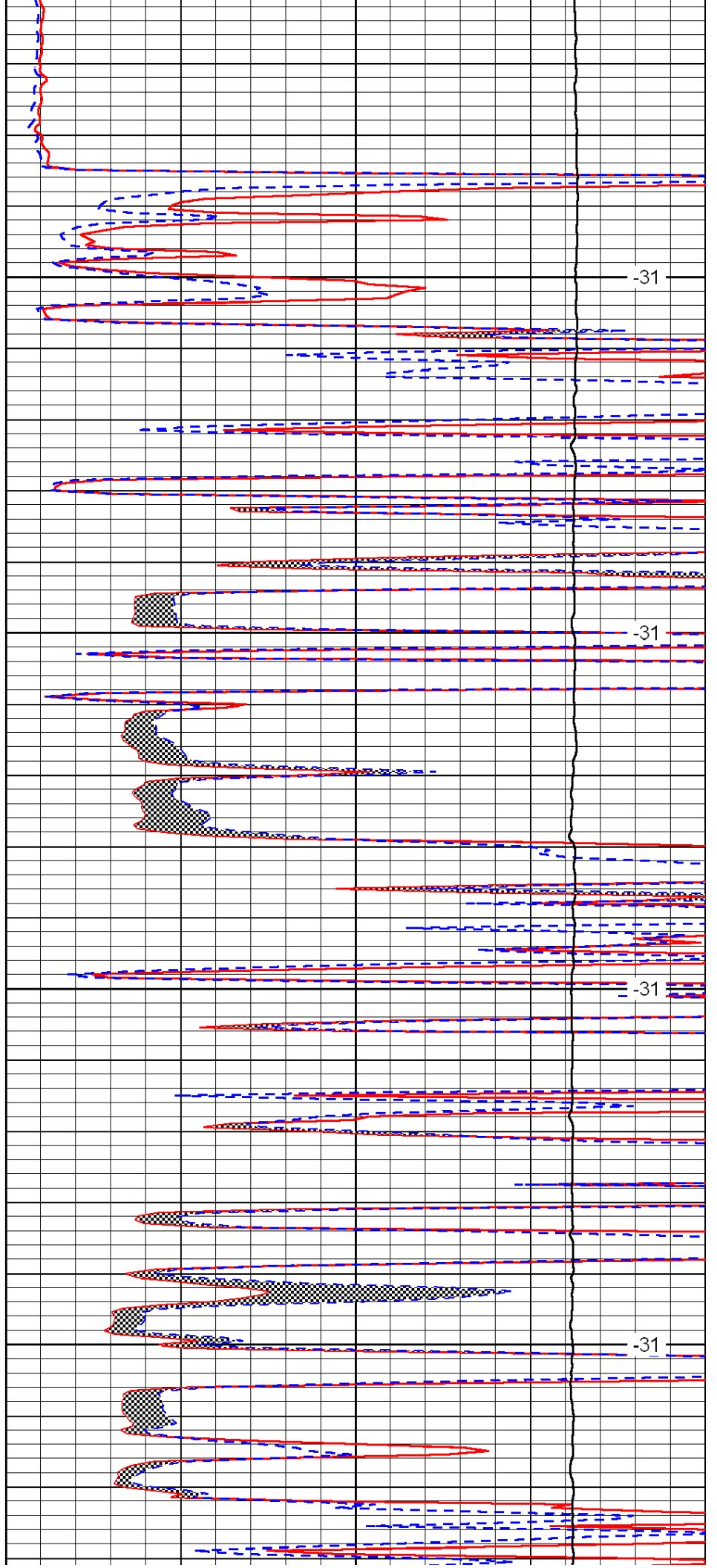


4600

4650

4700

4750

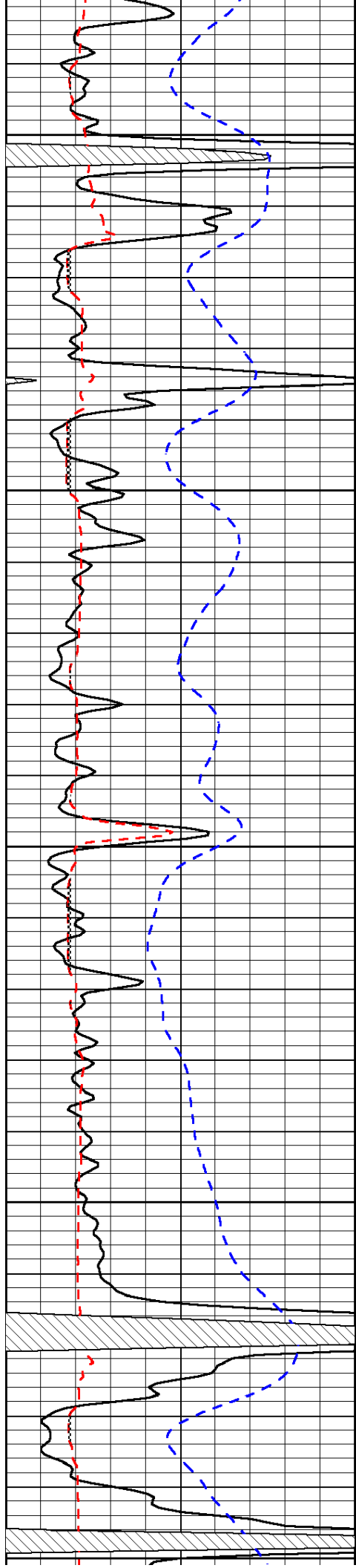


-31

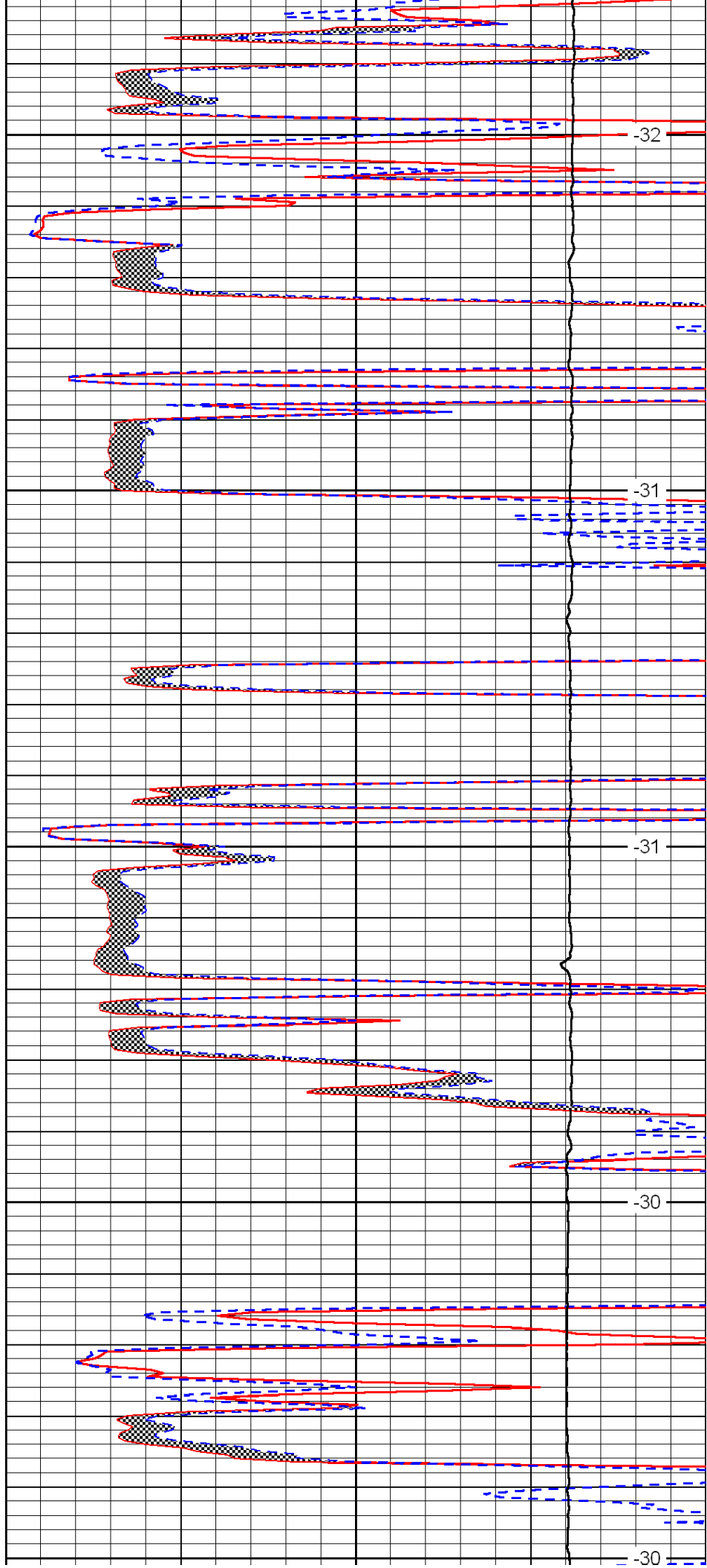
-31

-31

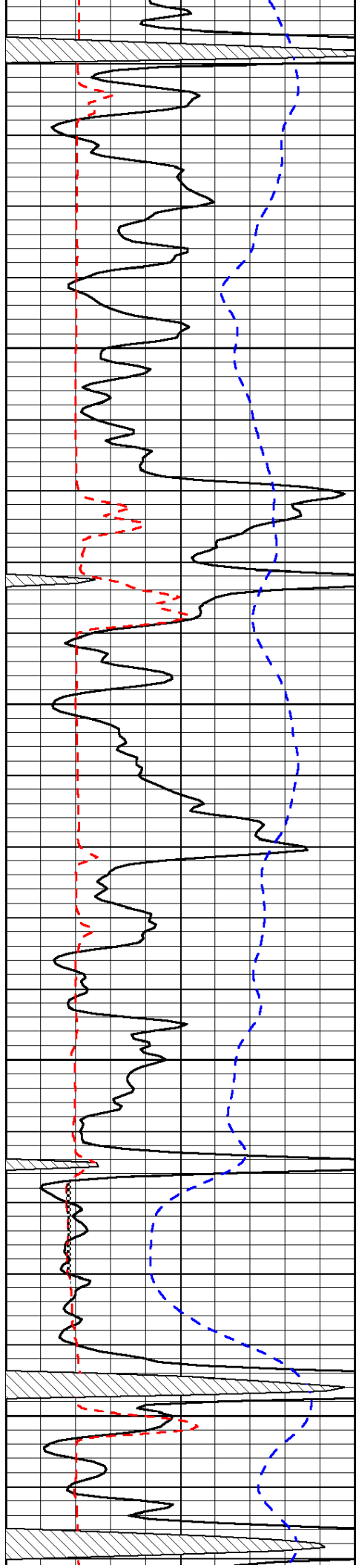
-31



4800
4850
4900
4950
5000



-32
-31
-31
-30
-30

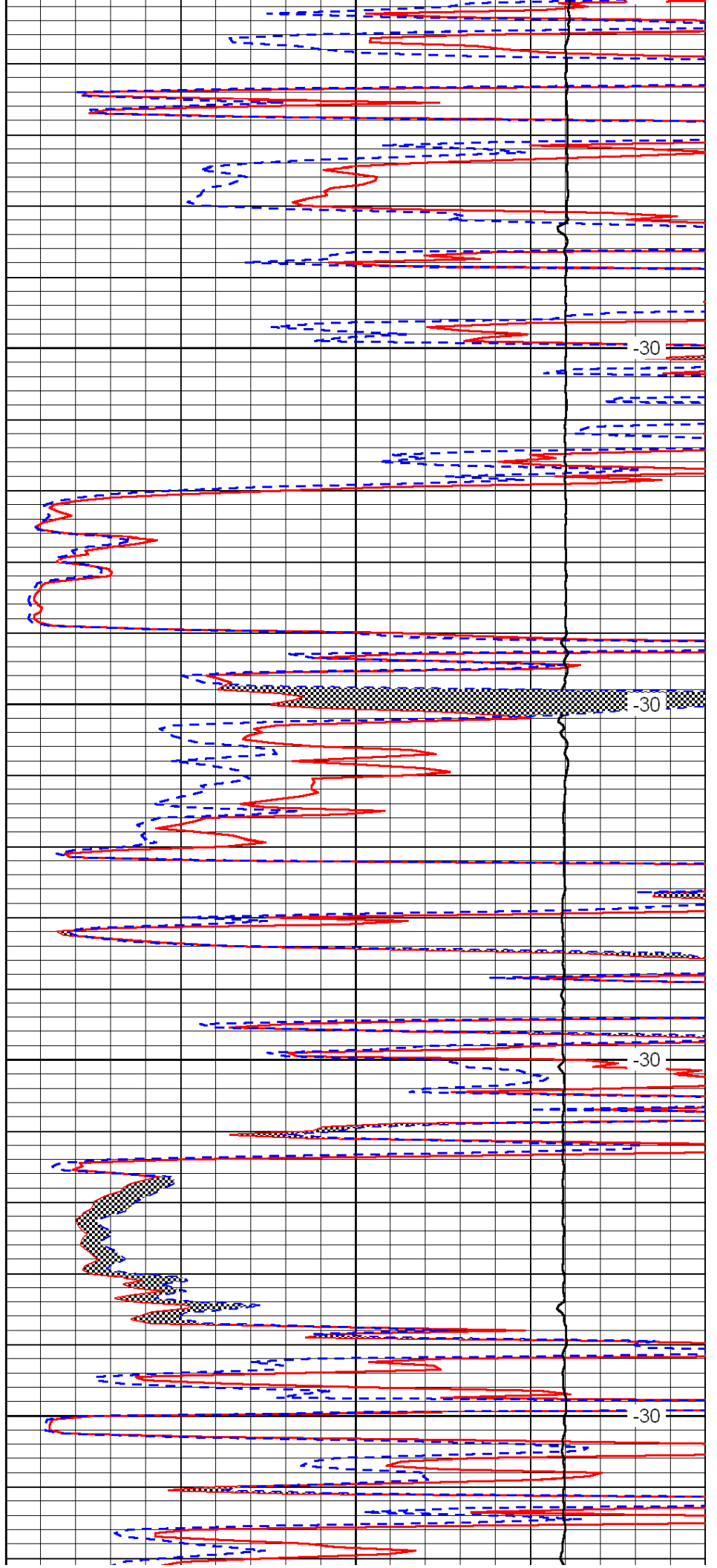


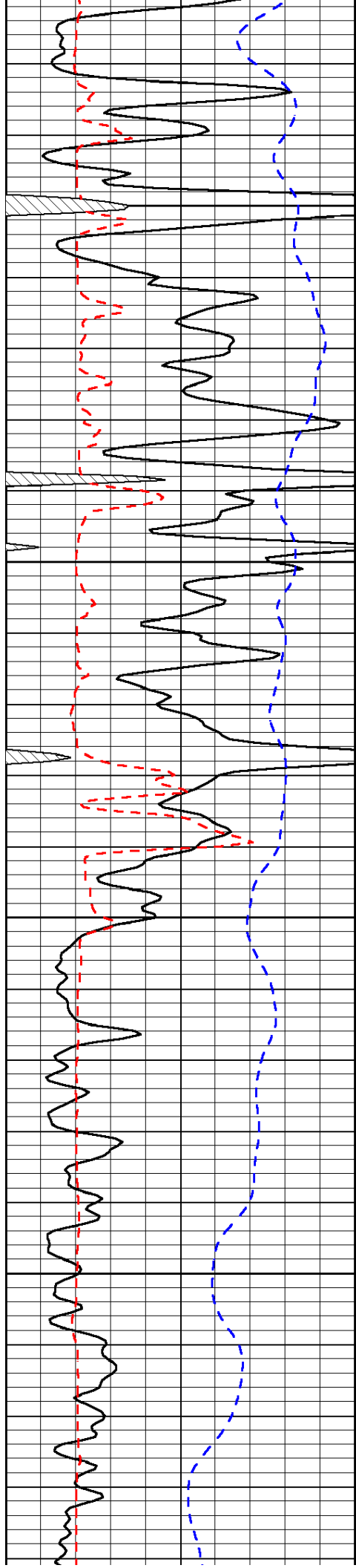
5050

5100

5150

5200



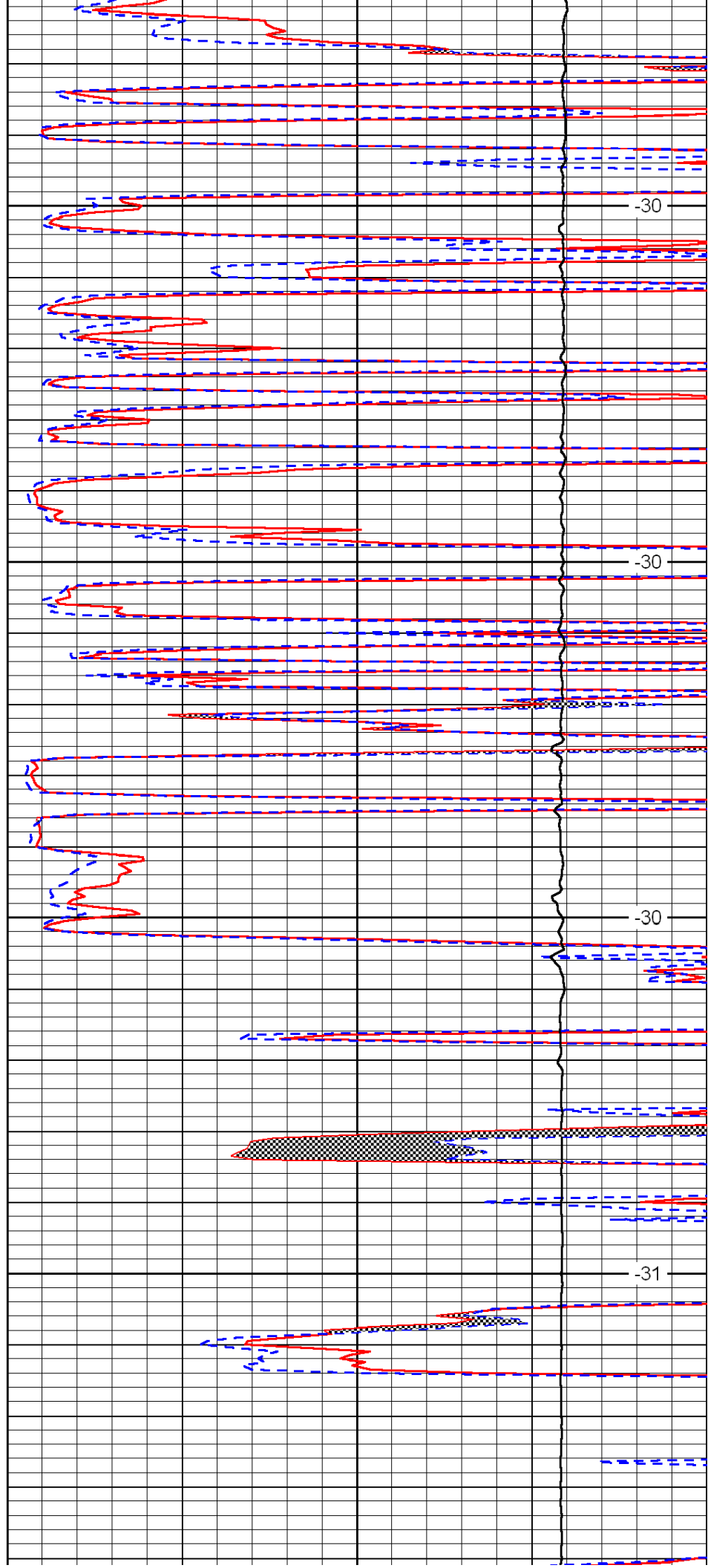


5250

5300

5350

5400

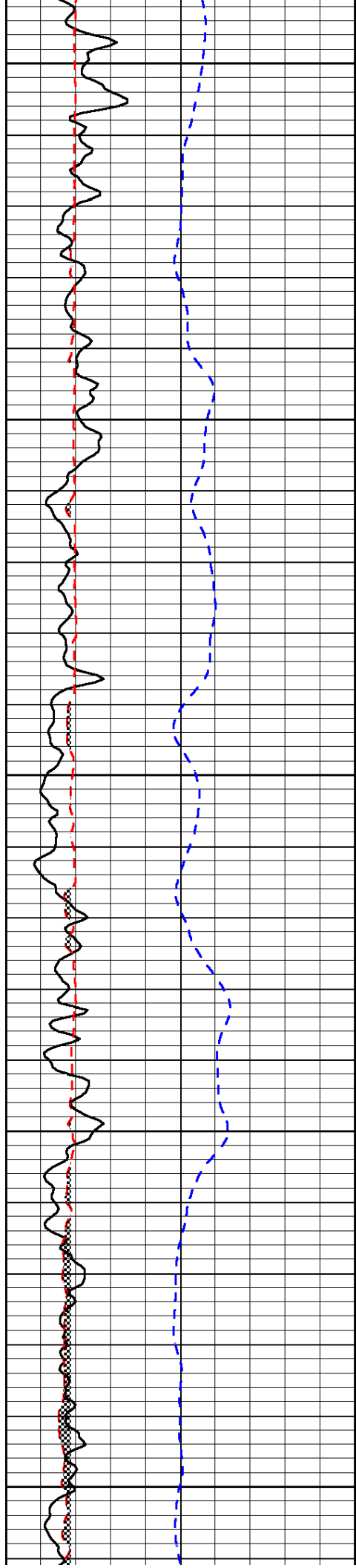


-30

-30

-30

-31



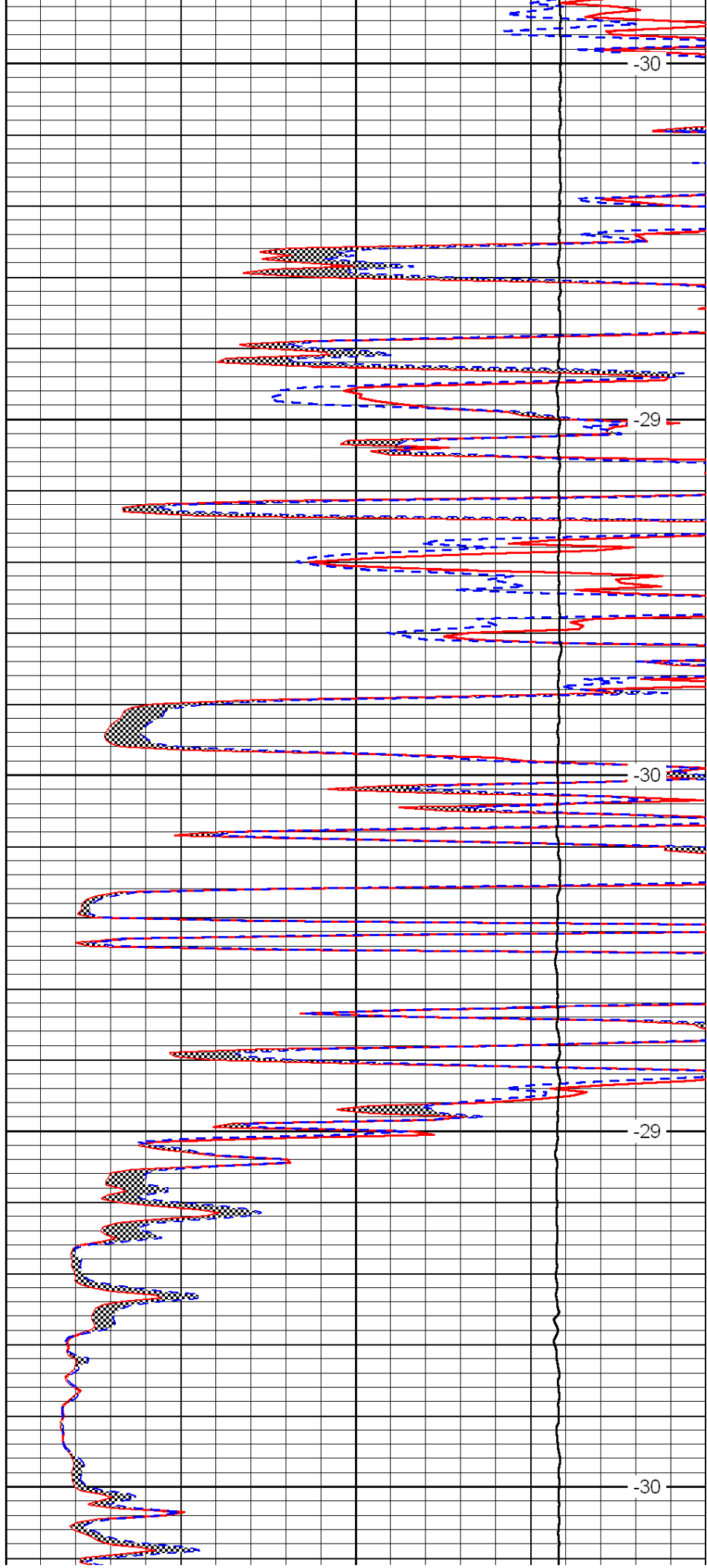
5450

5500

5550

5600

5650



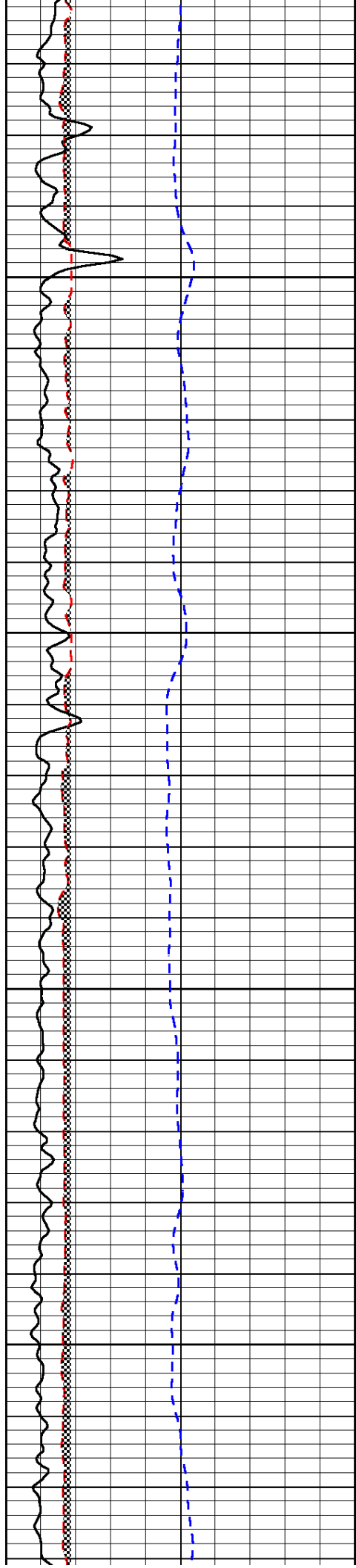
-30

-29

-30

-29

-30

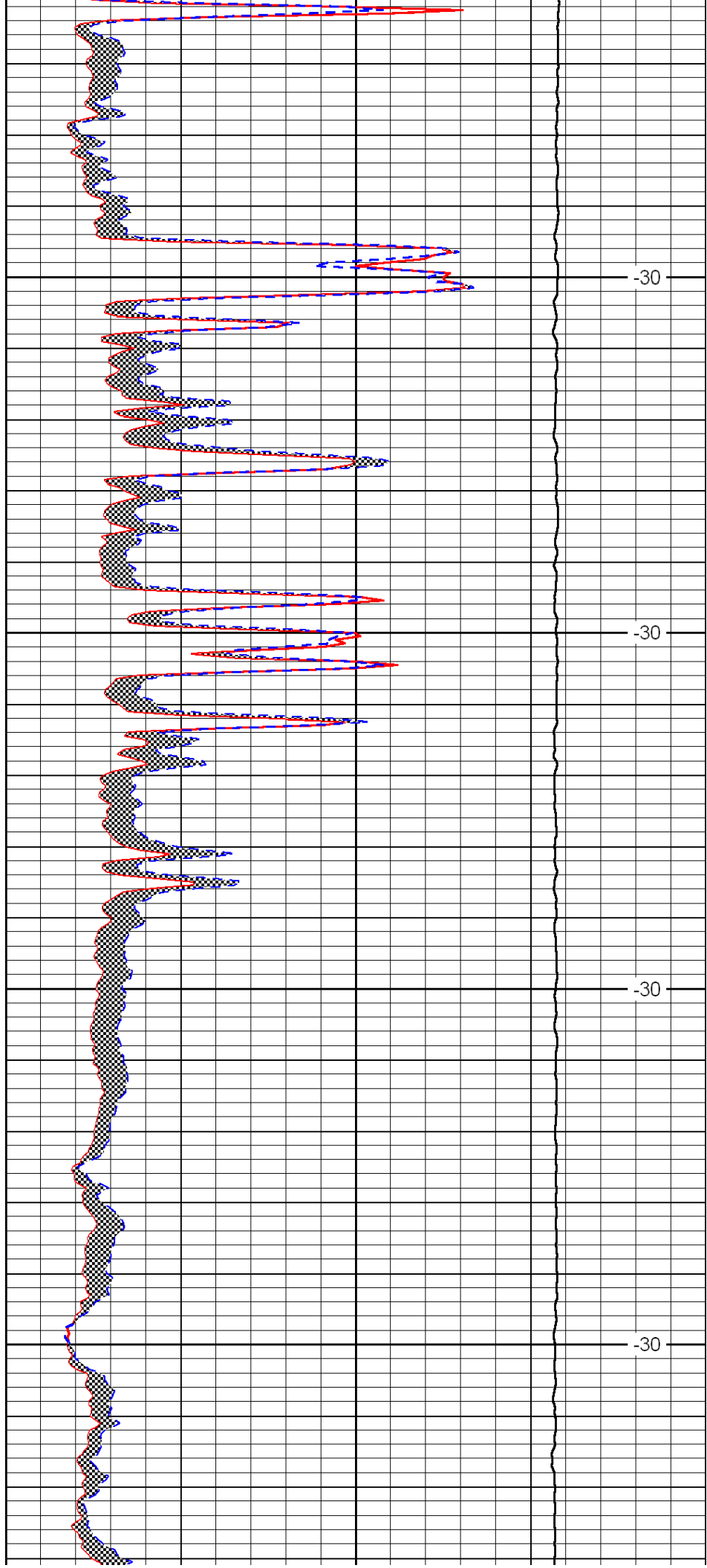


5700

5750

5800

5850

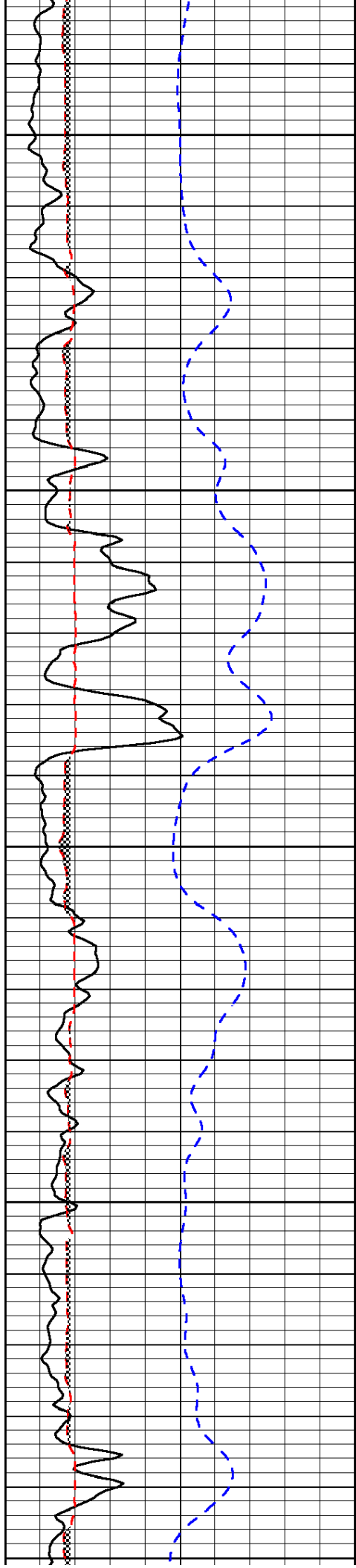


-30

-30

-30

-30



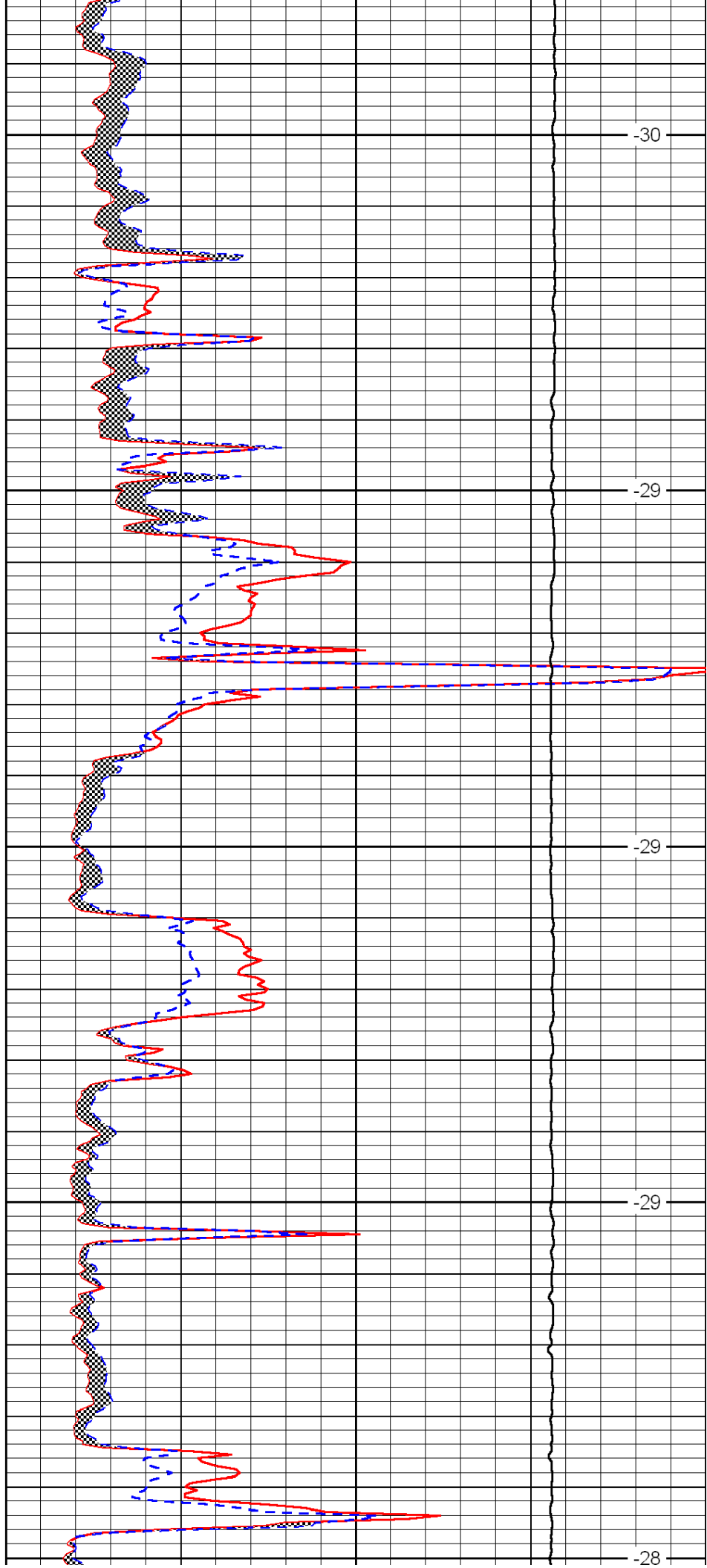
5900

5950

6000

6050

6100



-30

-29

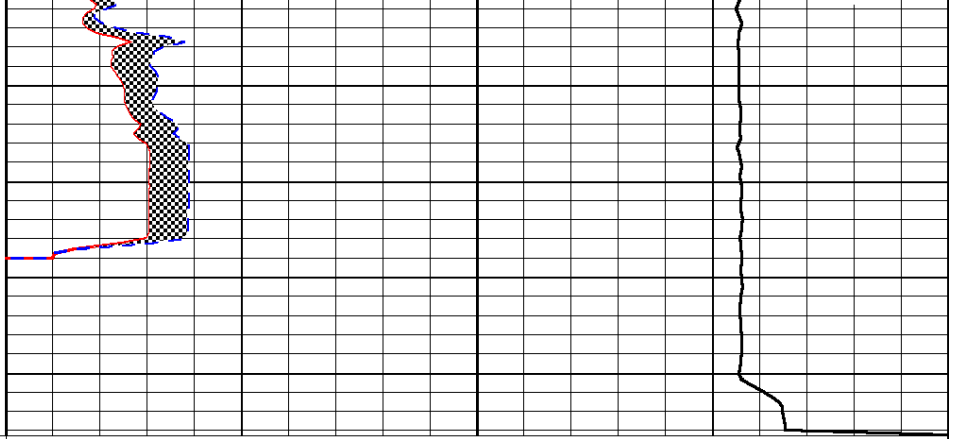
-29

-29

-28



| | | |
|------|--------------------------|-----|
| 0 | Gamma Ray | 150 |
| 6 | Micro Log Caliper (GAPI) | 16 |
| -200 | SP (mV) | 0 |



| | | |
|-------|---------------------|----|
| 0 | Micro Inverse 1 X 1 | 40 |
| 0 | Micro Normal 2" | 40 |
| 15000 | Line Weight | 0 |

LSPD