



DIGITAL LOG (785) 625-3858

Dual Induction Log

API No.	15-025-21,500-00-00		
Company	Falcon Exploration, Inc.		
Well	Swayze No. 1-30 (NE)		
Field	Wildcat		
County	Clark	State	Kansas
Location	2280' FNL & 1730' FEL		
Sec:	30	Twp:	30S Rge: 22W
Permanent Datum	Ground Level	Elevation	2430
Log Measured From	Kelly Bushing	10 Ft. Above Perm. Datum	
Drilling Measured From	Kelly Bushing		
		Other Services	CNL/CDL MEL/BHCS
		Elevation	K.B. 2440 D.F. 2430 G.L. 2430

Date	4/22/2010
Run Number	One
Depth Driller	6130
Depth Logger	6141
Bottom Logged Interval	6140
Top Log Interval	650
Casing Driller	8.675 @ 686
Casing Logger	686
Bit Size	7.875
Type Fluid in Hole	Chemical
Salinity, ppm CL	10,100
Density / Viscosity	9.1 49
pH / Fluid Loss	9.0 9.6
Source of Sample	Flowline
Rm @ Meas. Temp	.56 @ 70
Rmf @ Meas. Temp	.42 @ 70
Rmc @ Meas. Temp	.76 @ 70
Source of Rmf / Rmc	Charts
Rm @ BHT	.28 @ 139
Operating Rig Time	6 Hours
Max Rec. Temp. F	139
Equipment Number	17
Location	Hays
Recorded By	Mike Garrison
Witnessed By	Keith Reavis

<<< Fold Here >>>

All interpretations are opinions based on inferences from electrical or other measurements and we cannot and do not guarantee the accuracy or correctness of any interpretation, and we shall not, except in the case of gross or willful negligence on our part, be liable or responsible for any loss, costs, damages, or expenses incurred or sustained by anyone resulting from any interpretation made by any of our officers, agents or employees. These interpretations are also subject to our general terms and conditions set out in our current Price Schedule.

Comments

Thank you for using Log-Tech, Inc.
(785) 625-3858

Kingsdown 9 South to Curve 1/8 West North Into

Database File: c:\warrior\data\falcon_swayze #1-30\falconhd.db
 Dataset Pathname: dil/falstck
 Presentation Format: dil2in
 Dataset Creation: Thu Apr 22 14:26:58 2010
 Charted by: Depth in Feet scaled 1:600

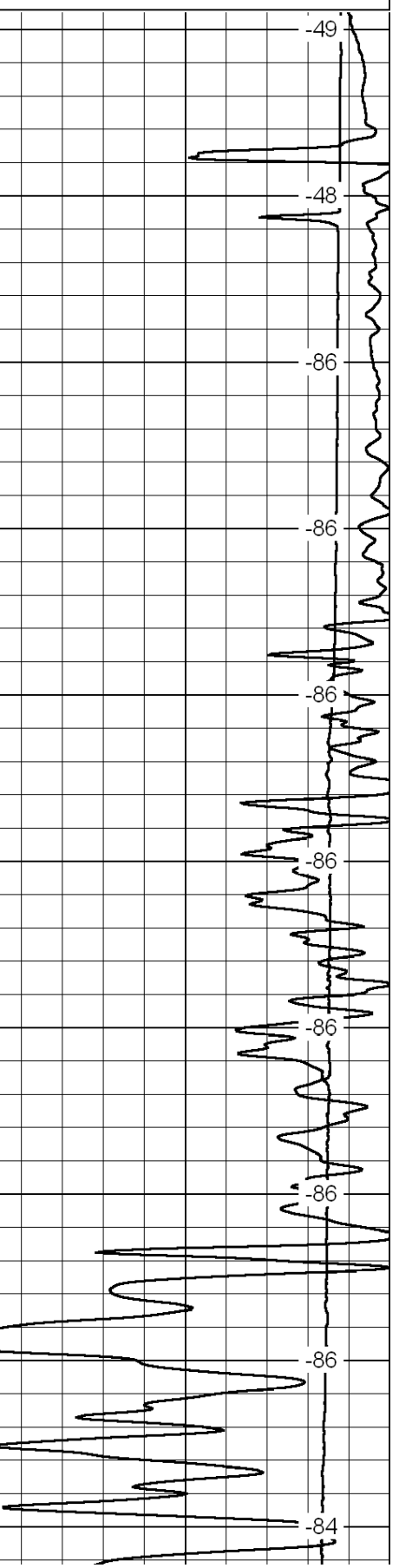
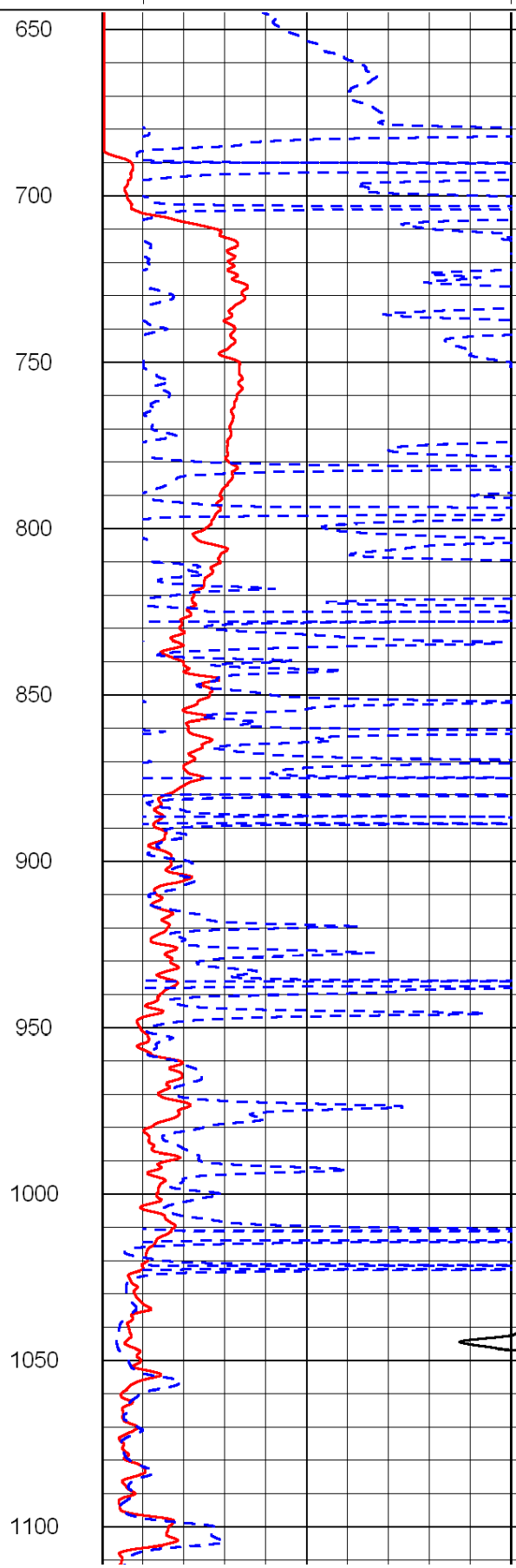
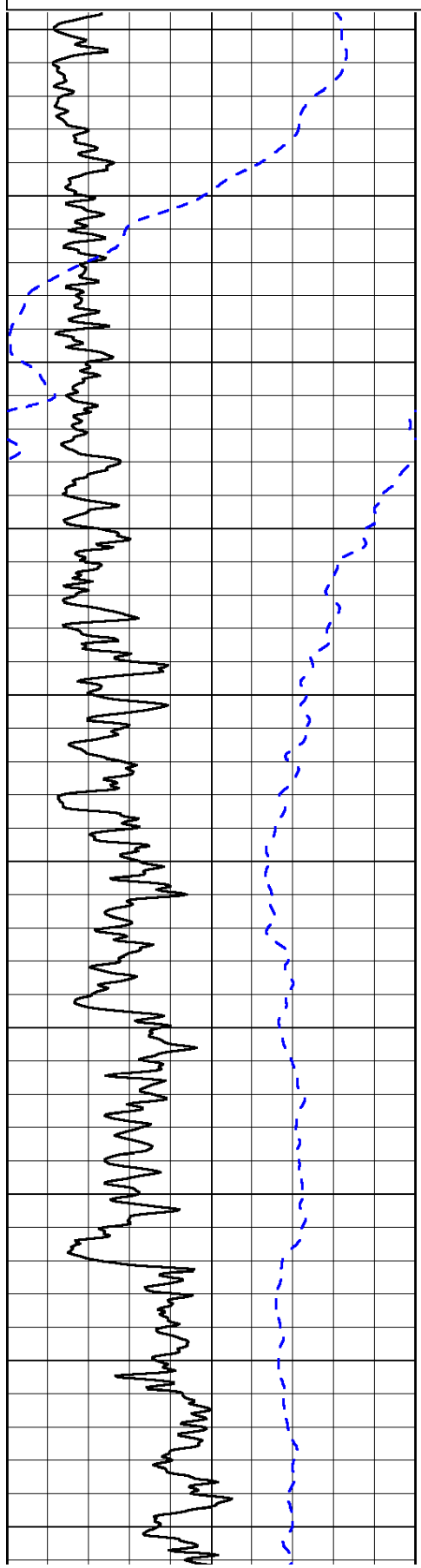
0	Gamma Ray	150
-200	SP (mV)	0

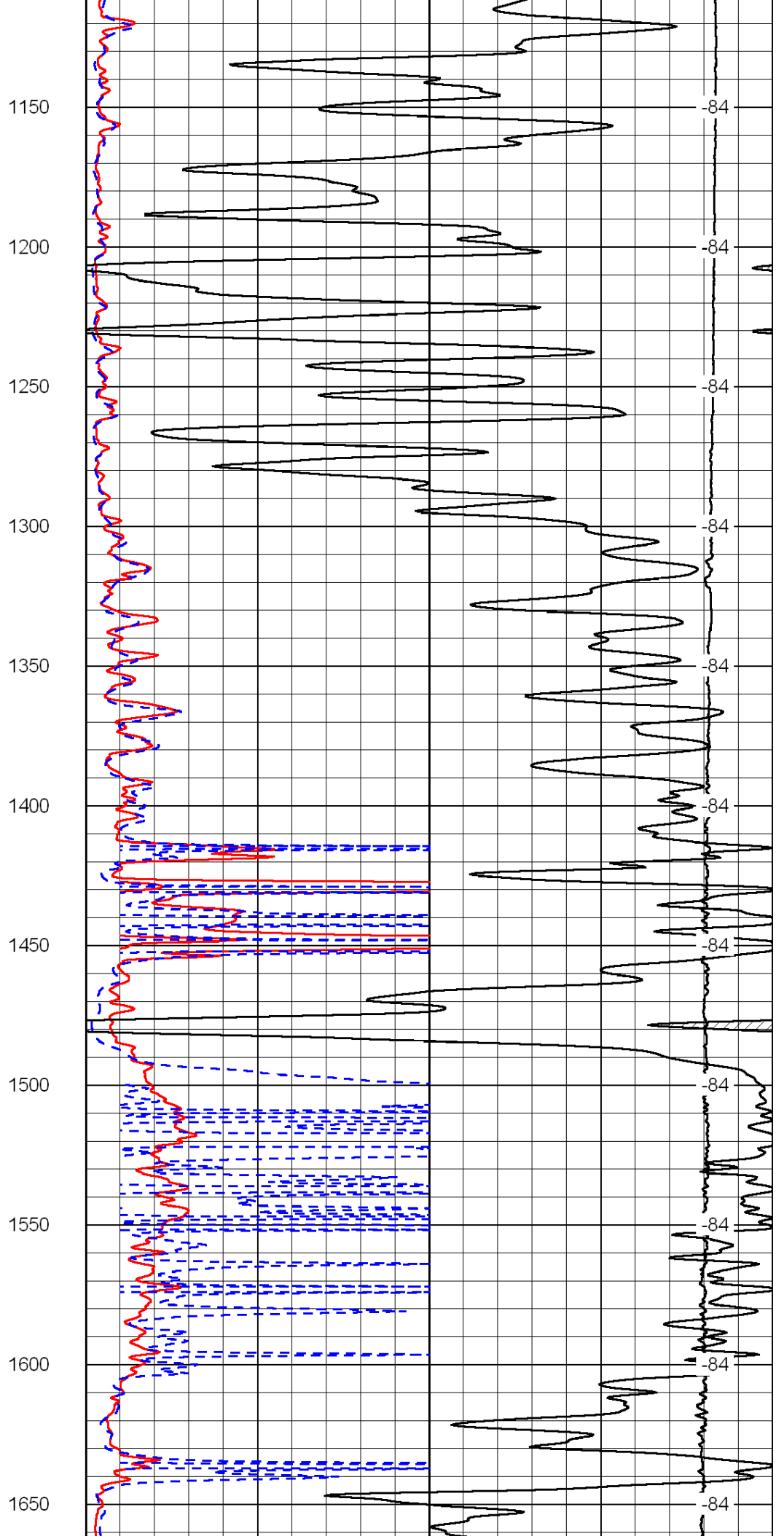
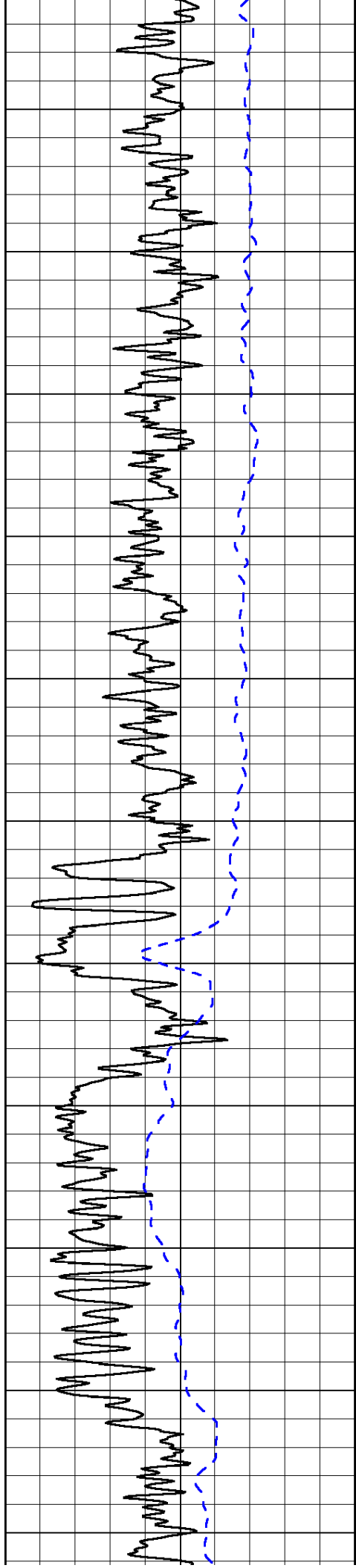
0	Shallow Resistivity	50
0	Deep Resistivity	50

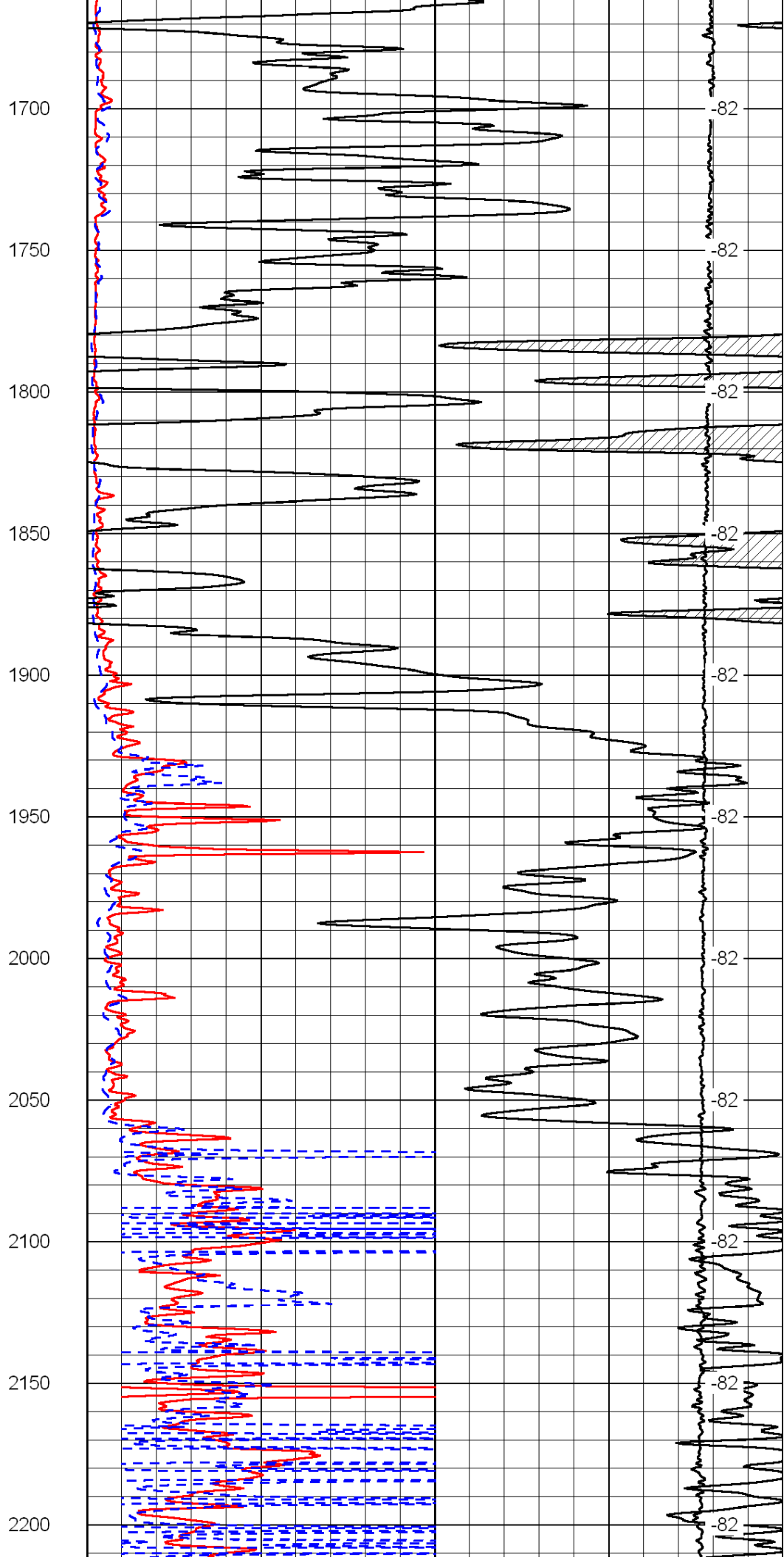
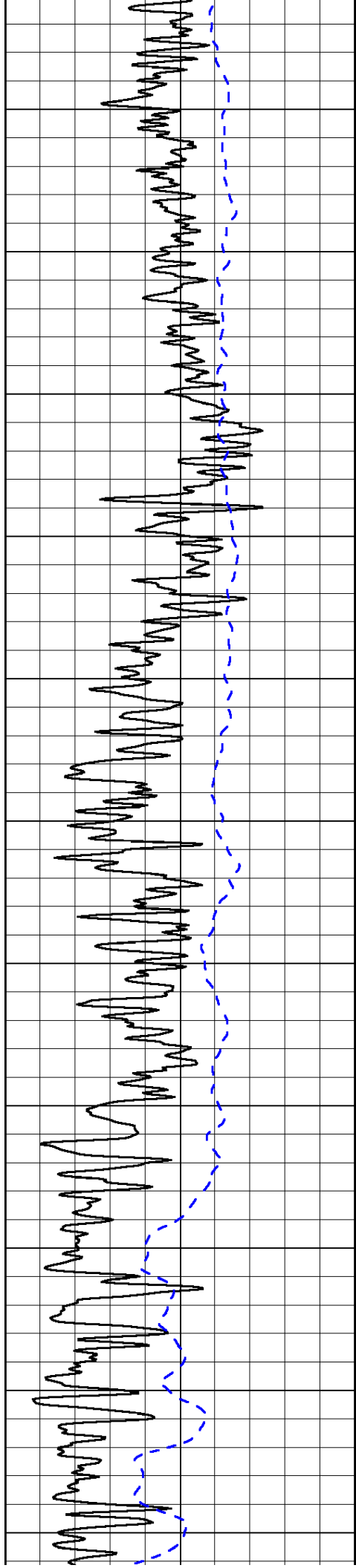
LSPD

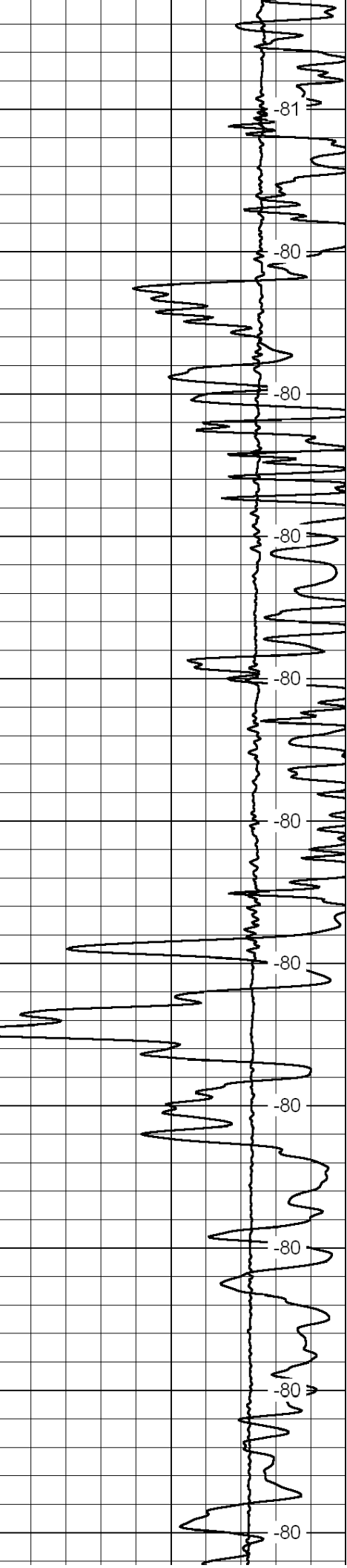
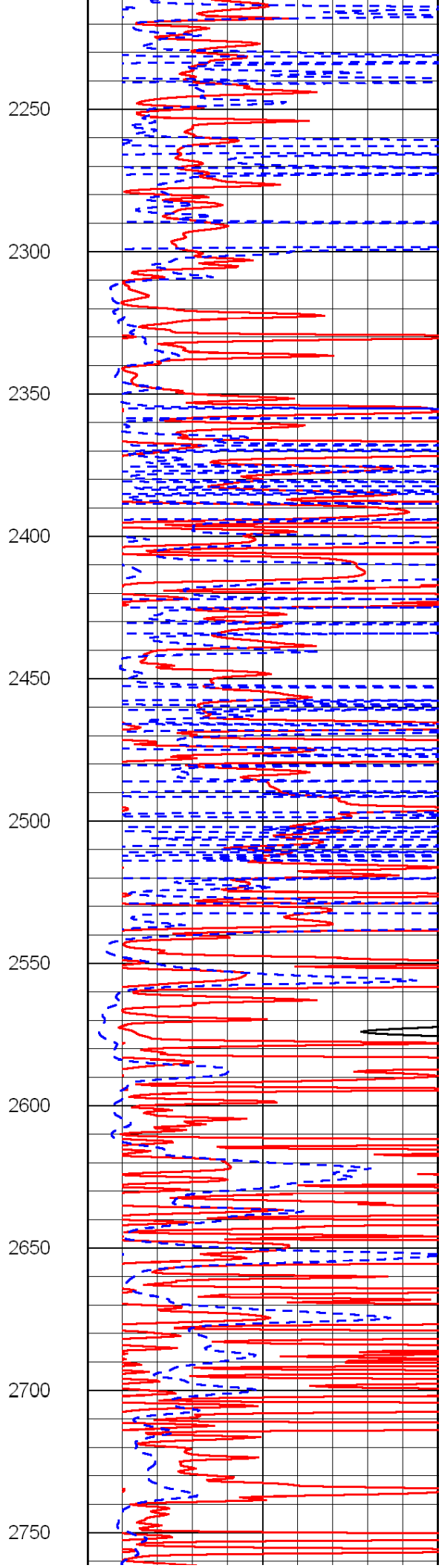
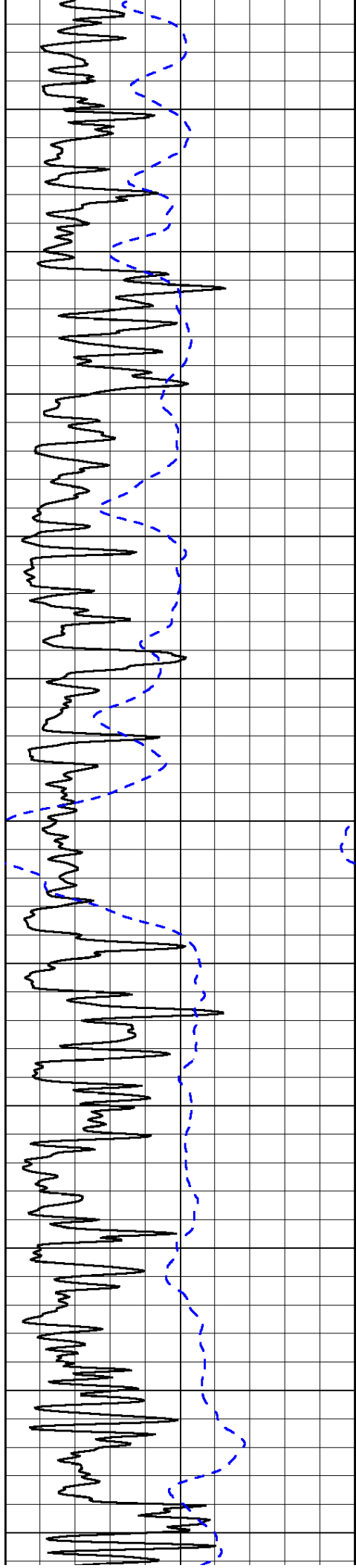
1000	Conductivity	0
15000	Line Tension	0

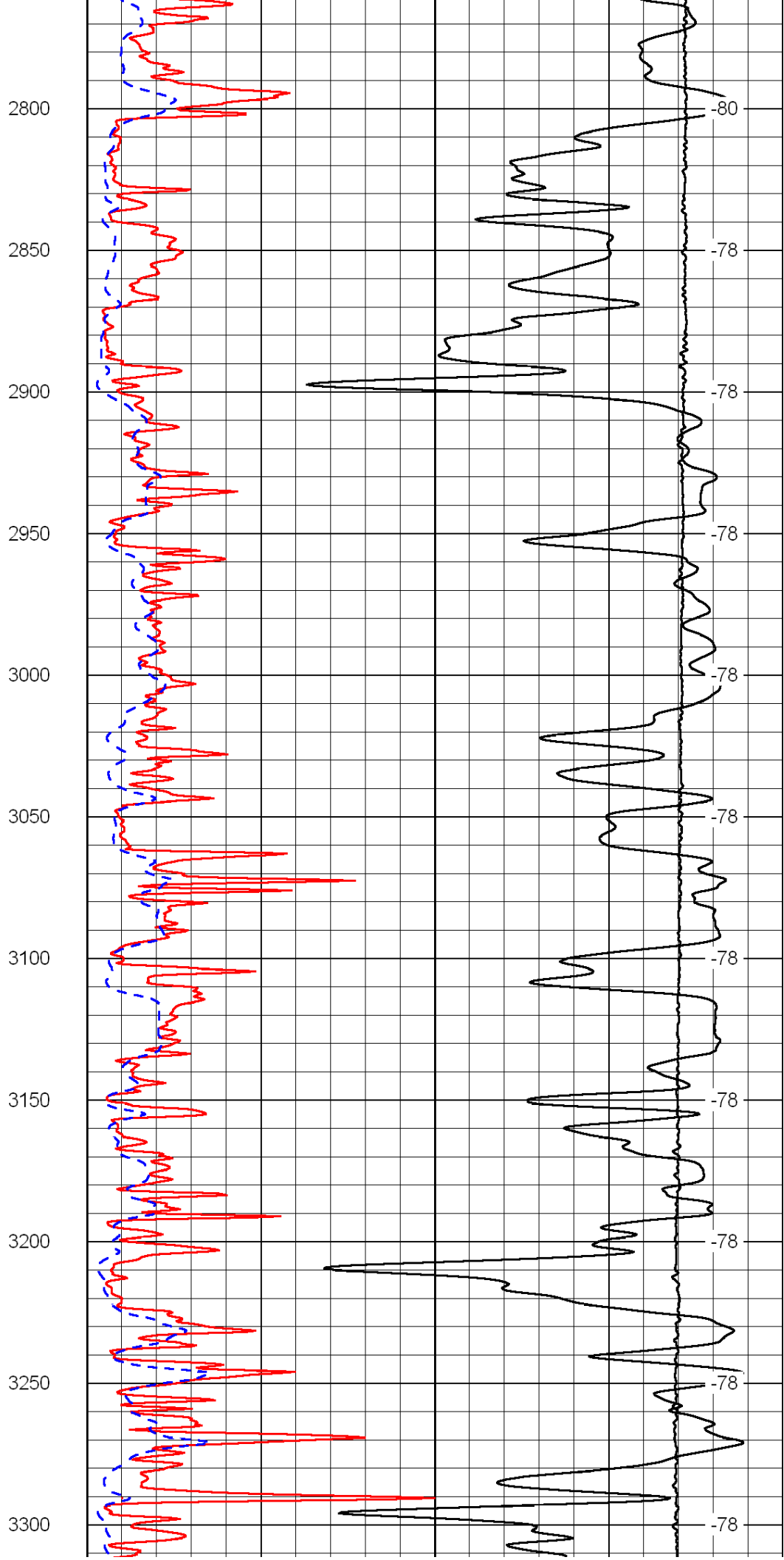
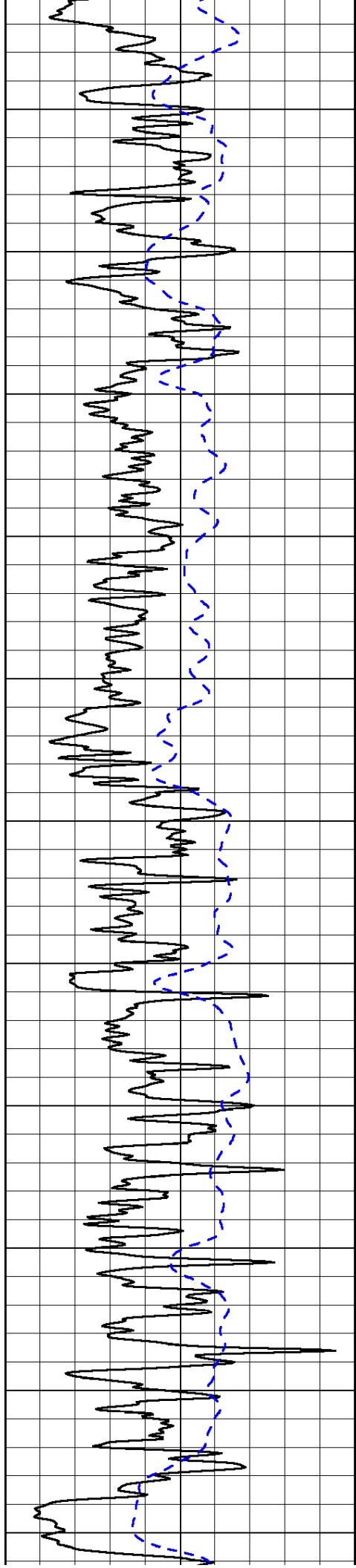
50	Shallow Resistivity	500
50	Deep Resistivity	500

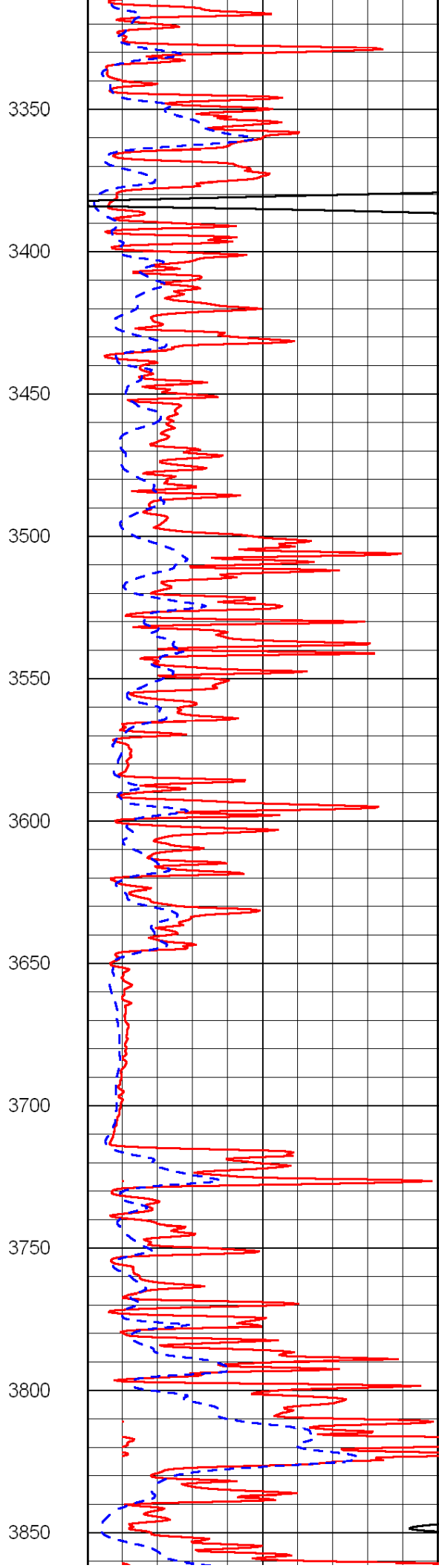
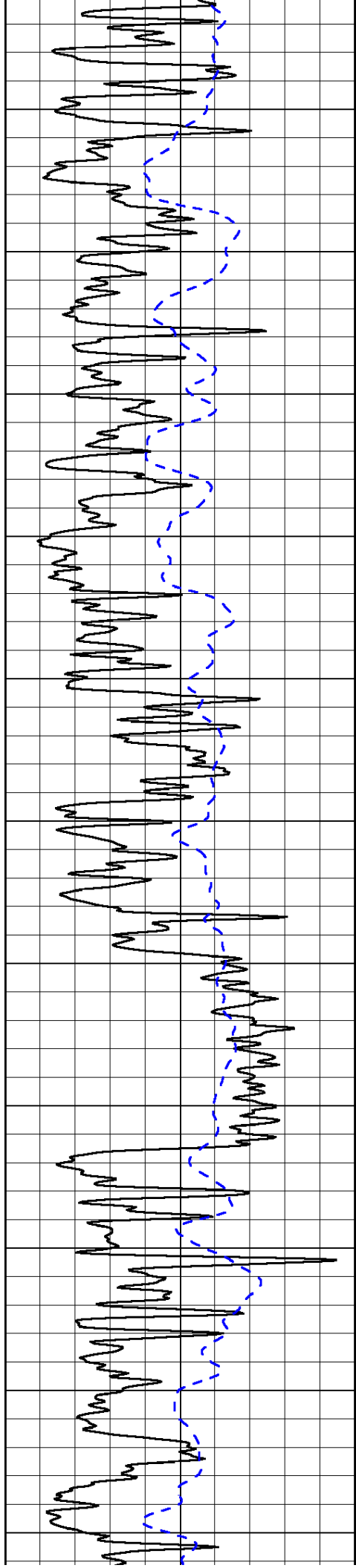


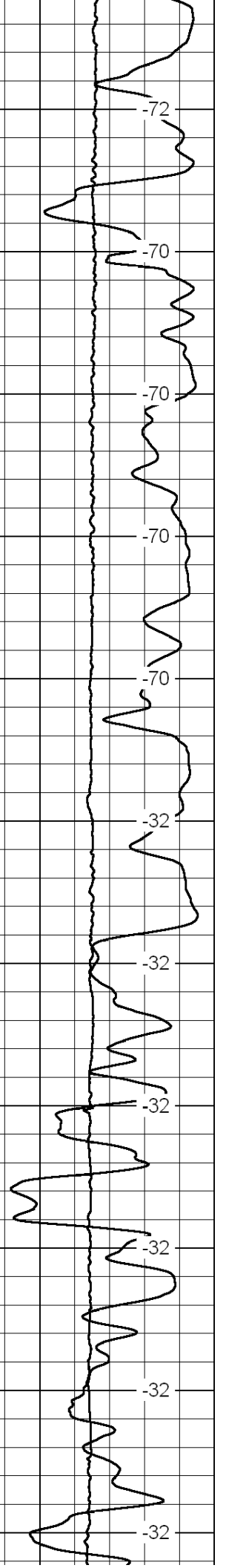
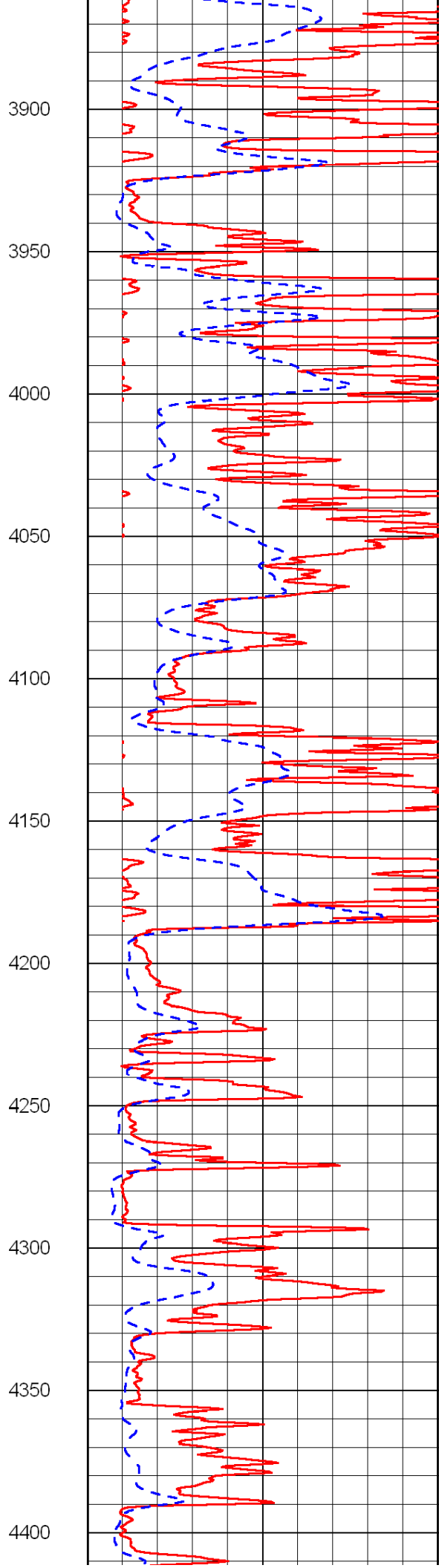
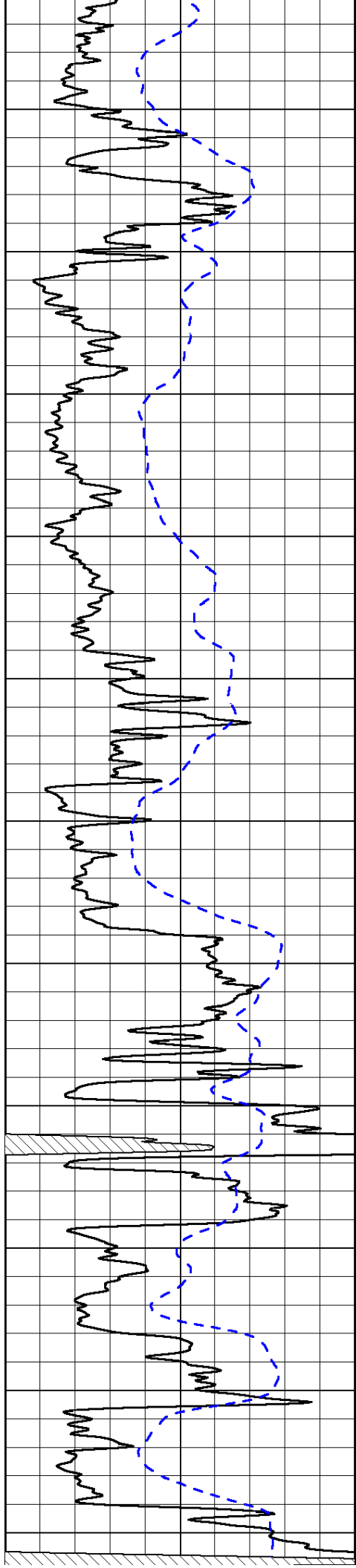


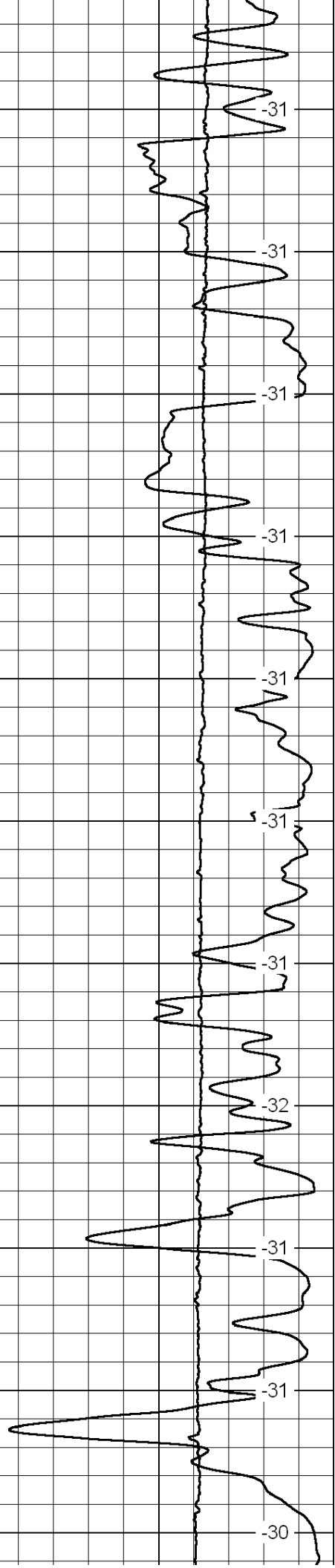
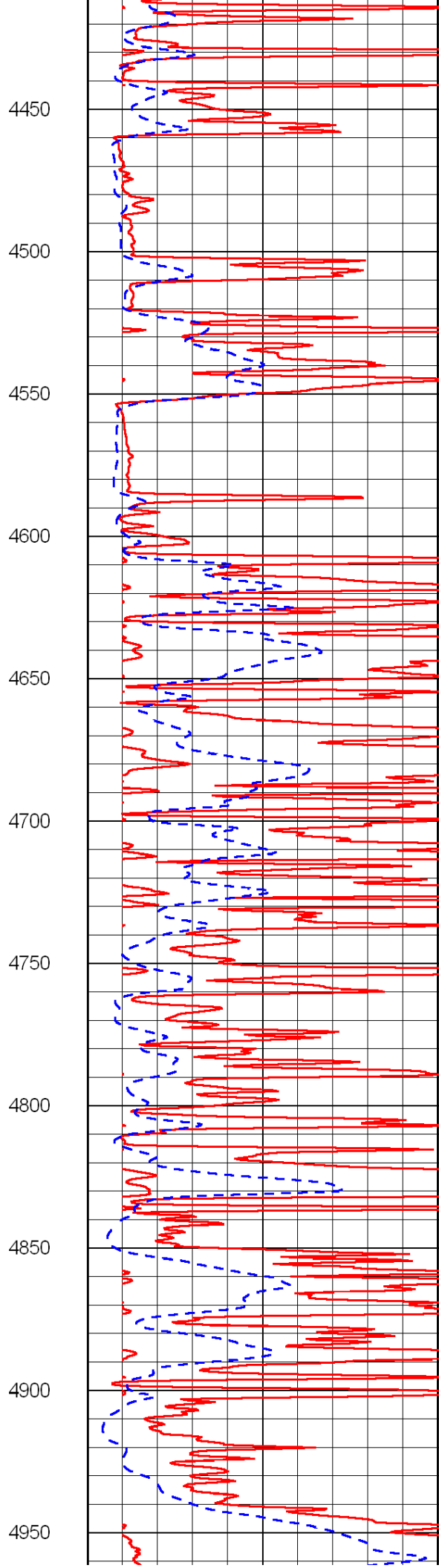
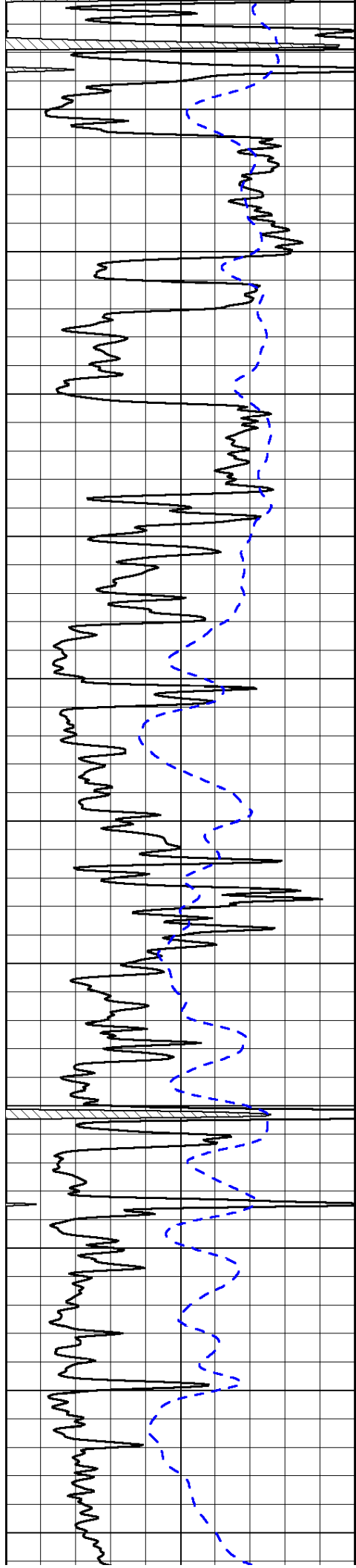


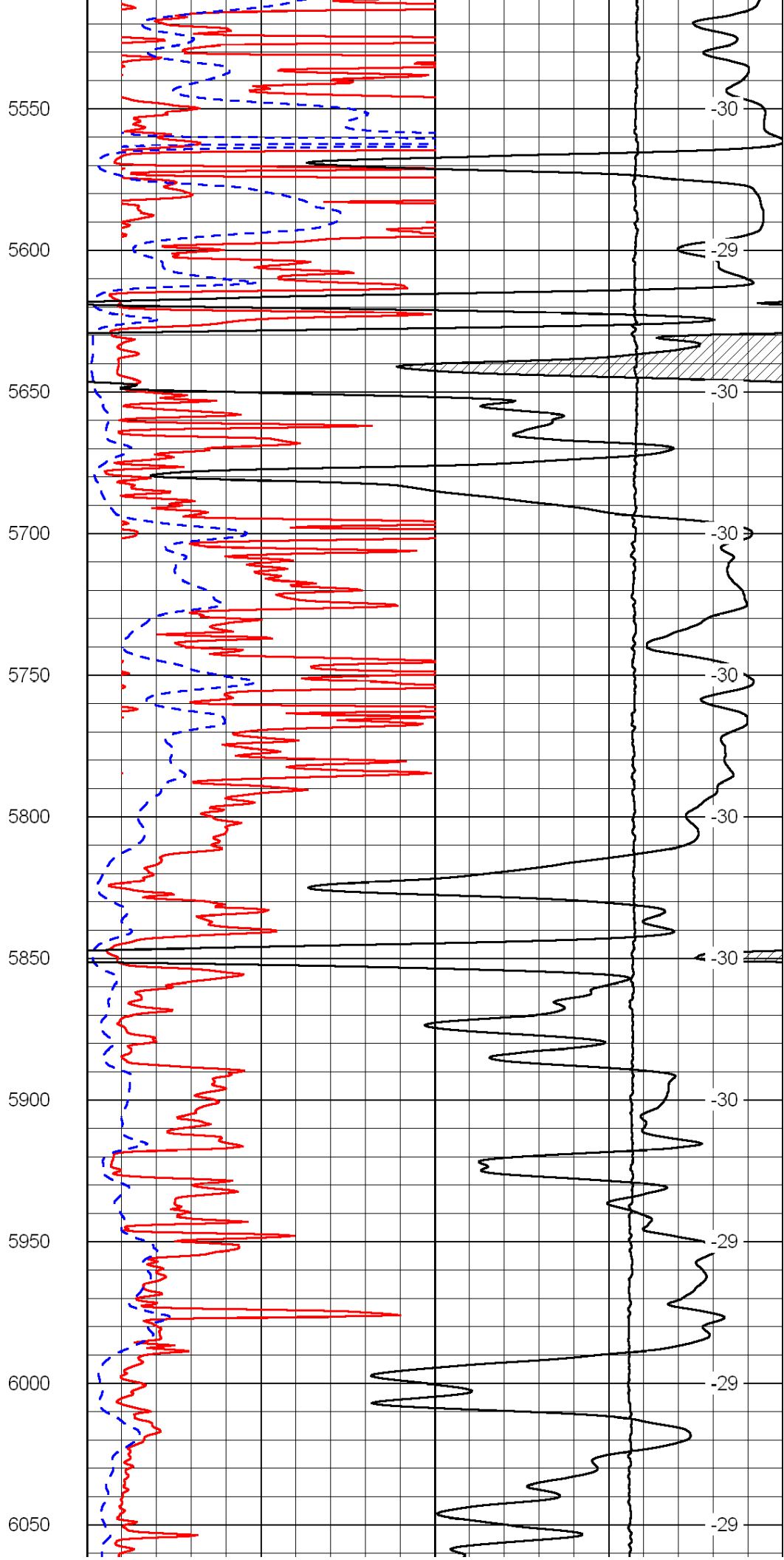
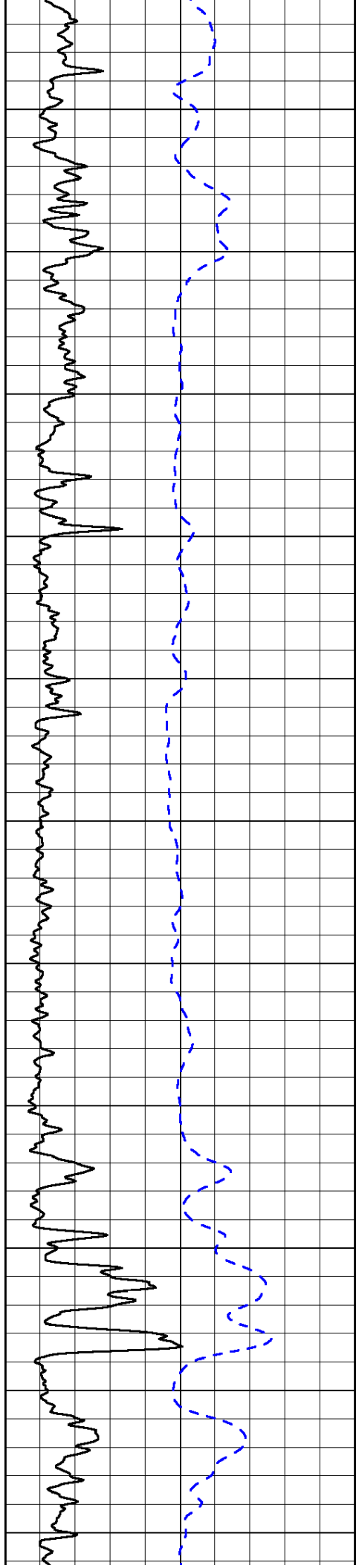


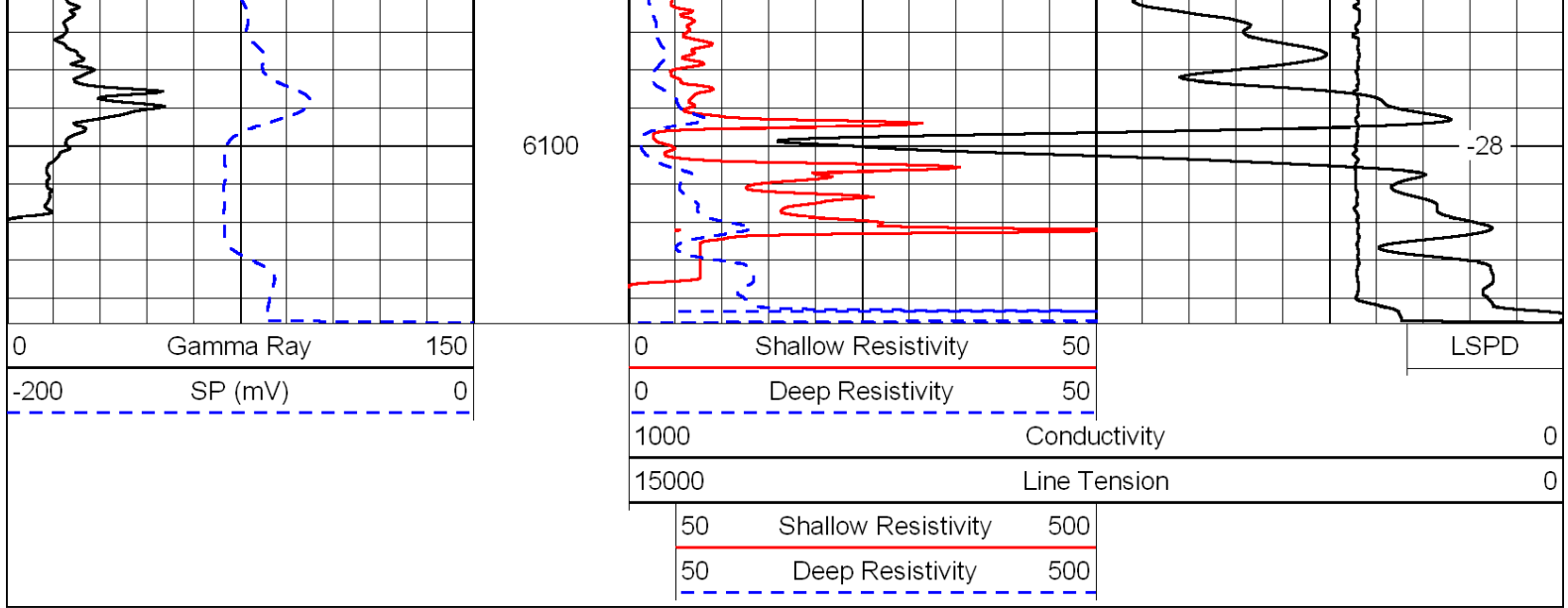




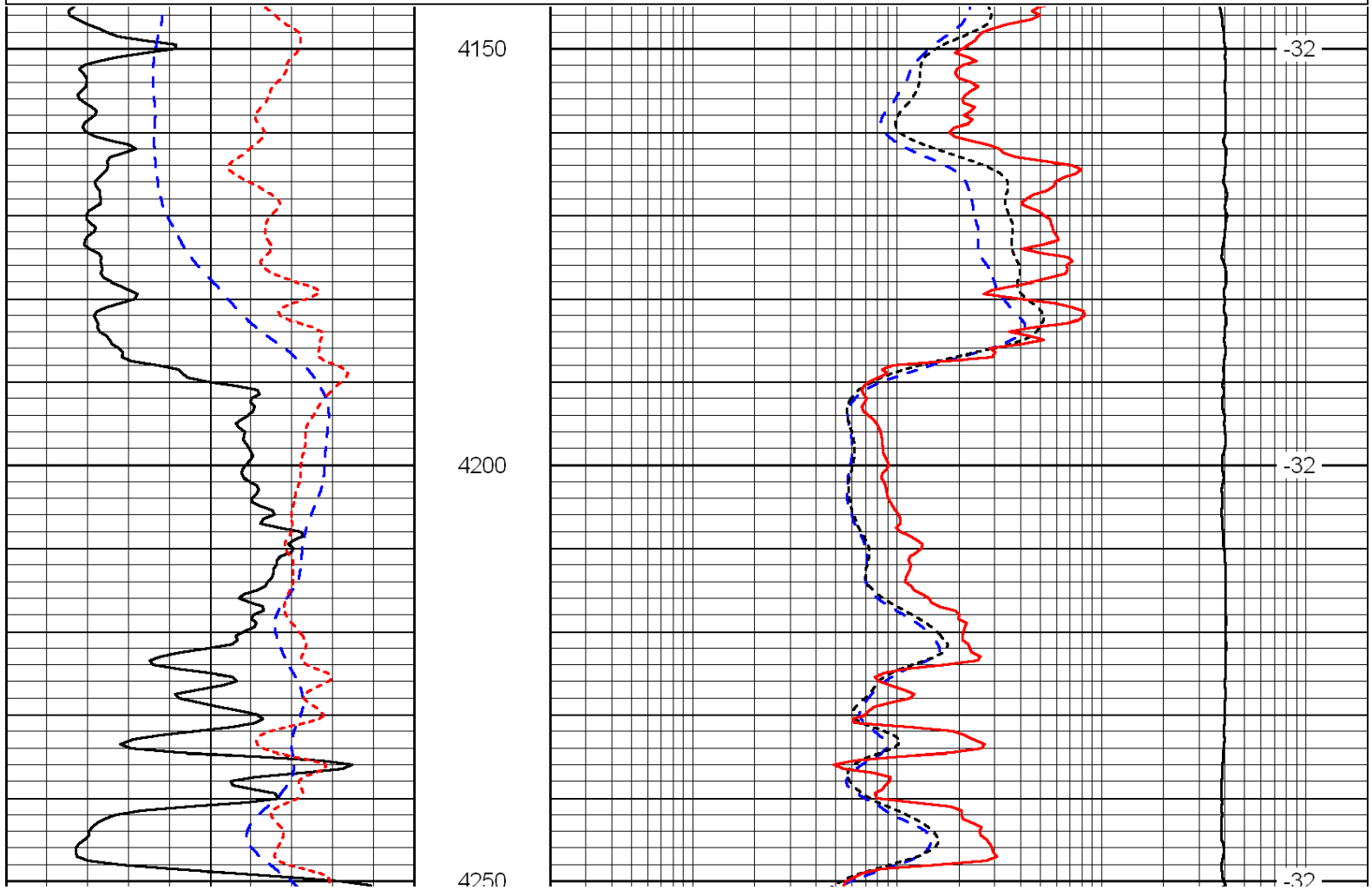
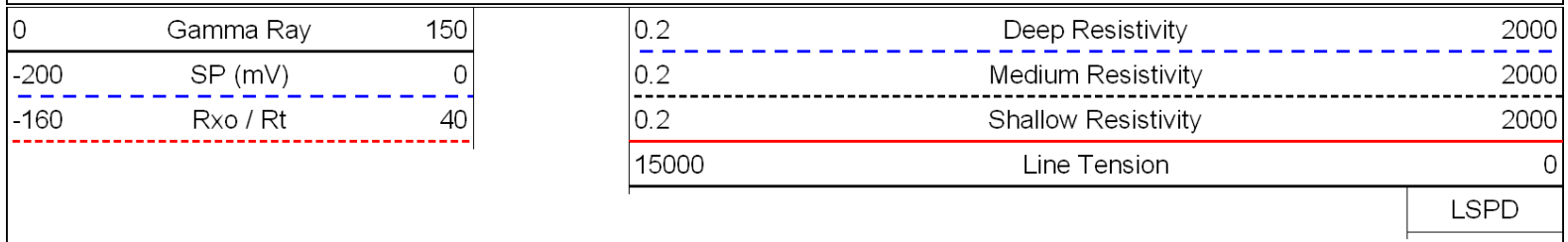


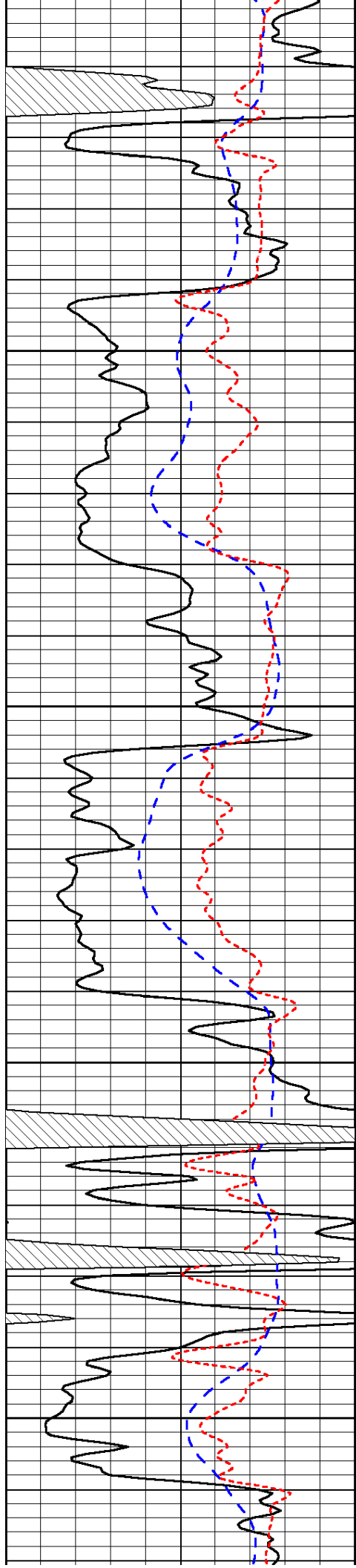






Database File: c:\warrior\data\falcon_swayze #1-30\falconhd.db
 Dataset Pathname: dil/falstck
 Presentation Format: dil
 Dataset Creation: Thu Apr 22 14:26:58 2010
 Charted by: Depth in Feet scaled 1:240



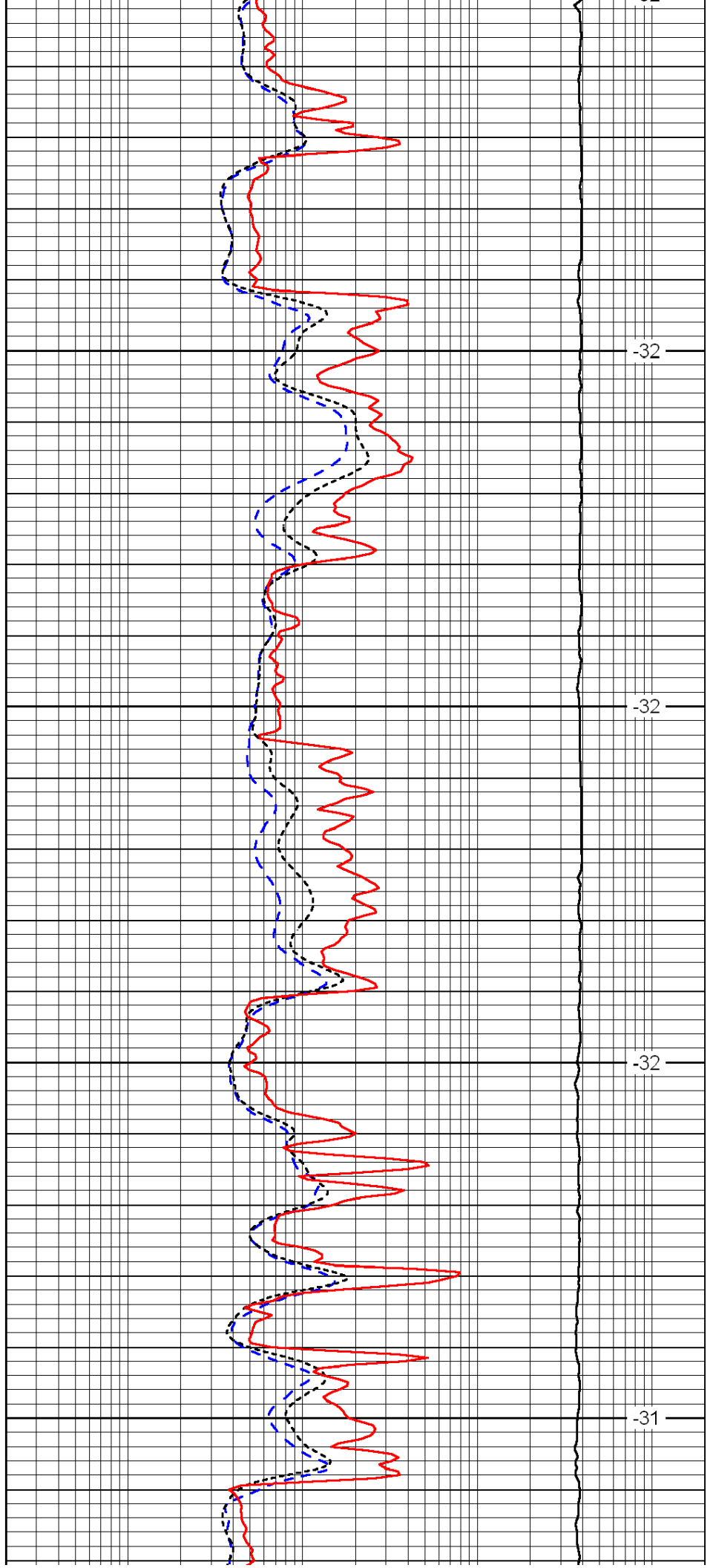


4300

4350

4400

4450

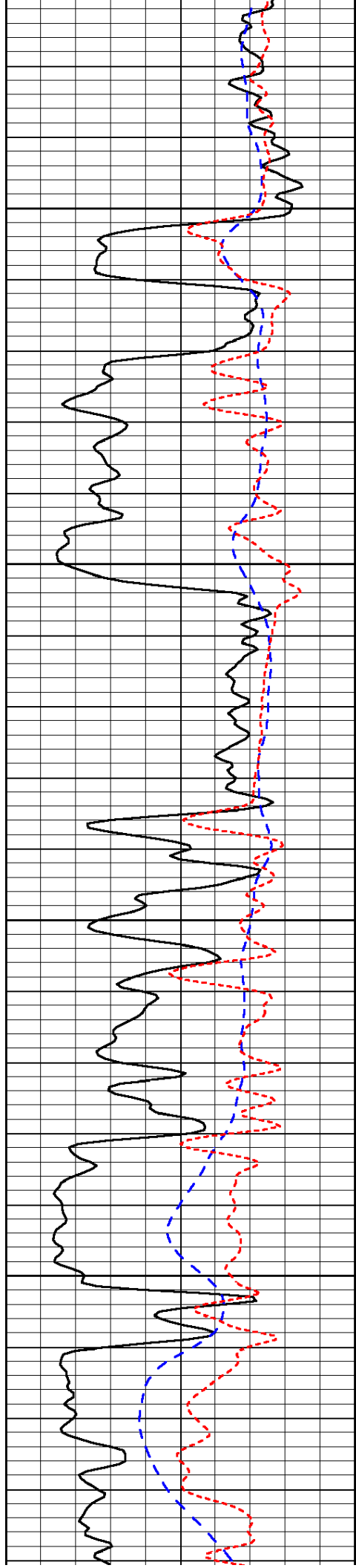


-32

-32

-32

-31

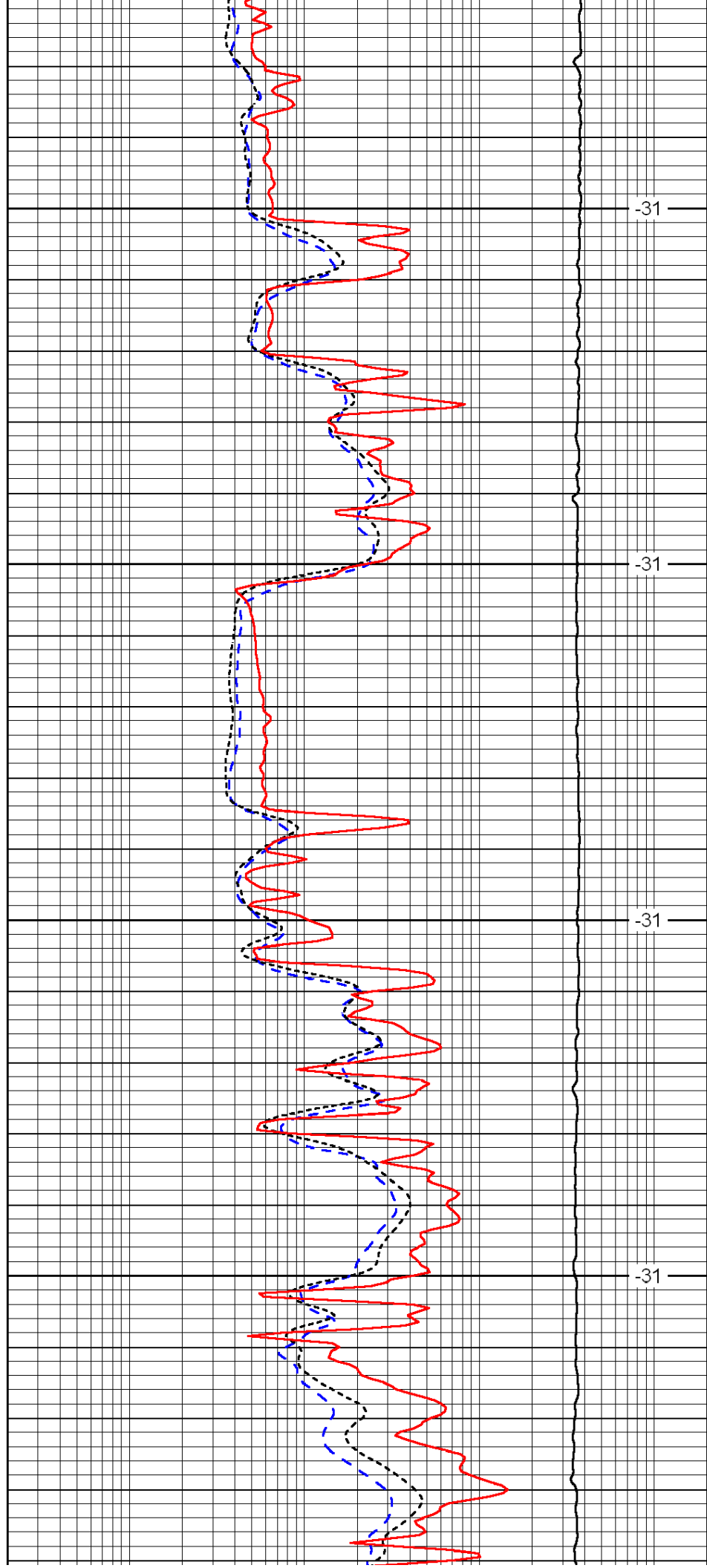


4500

4550

4600

4650

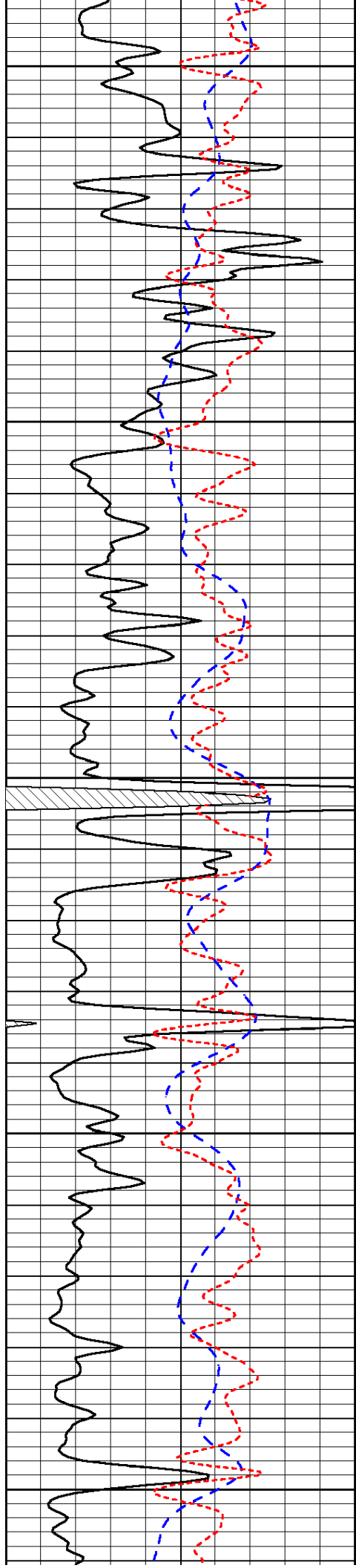


-31

-31

-31

-31



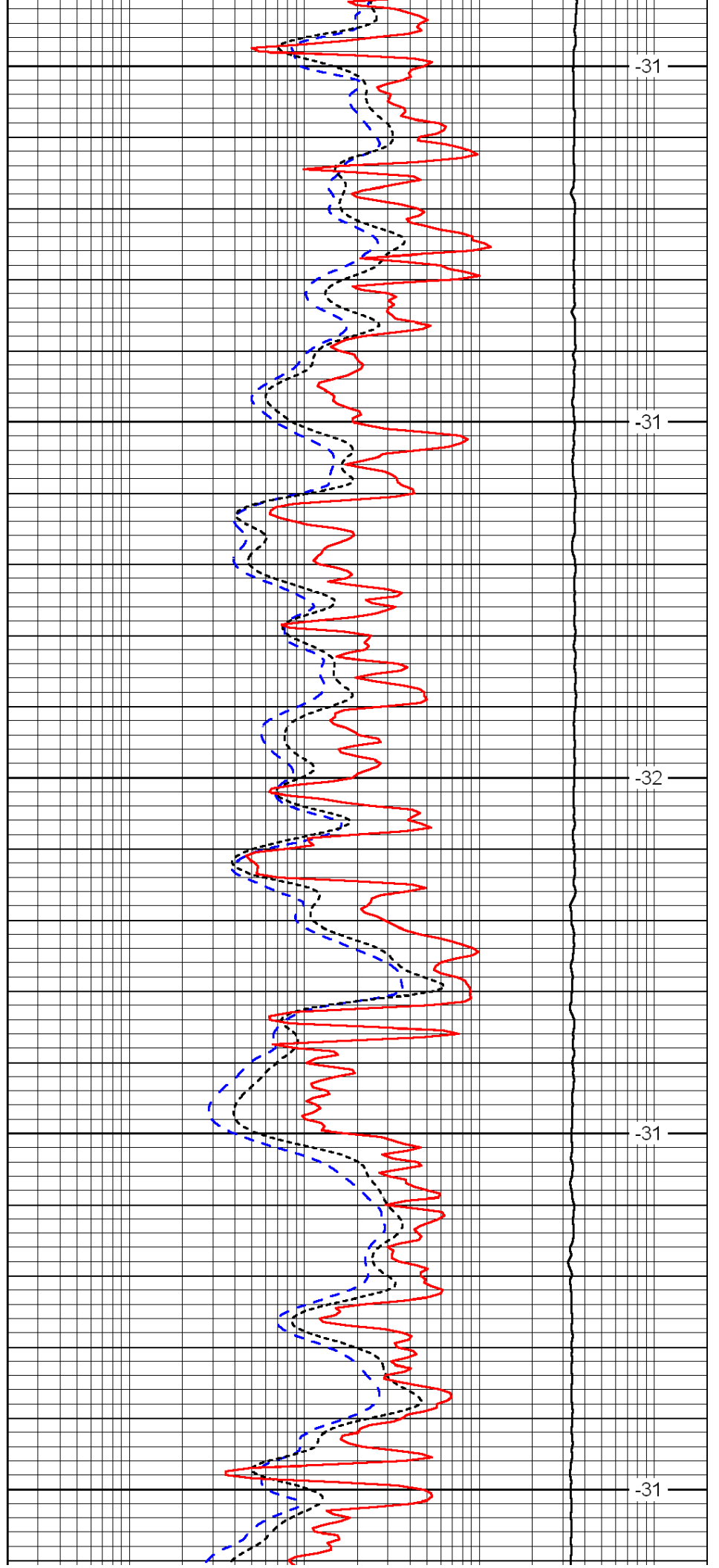
4700

4750

4800

4850

4900



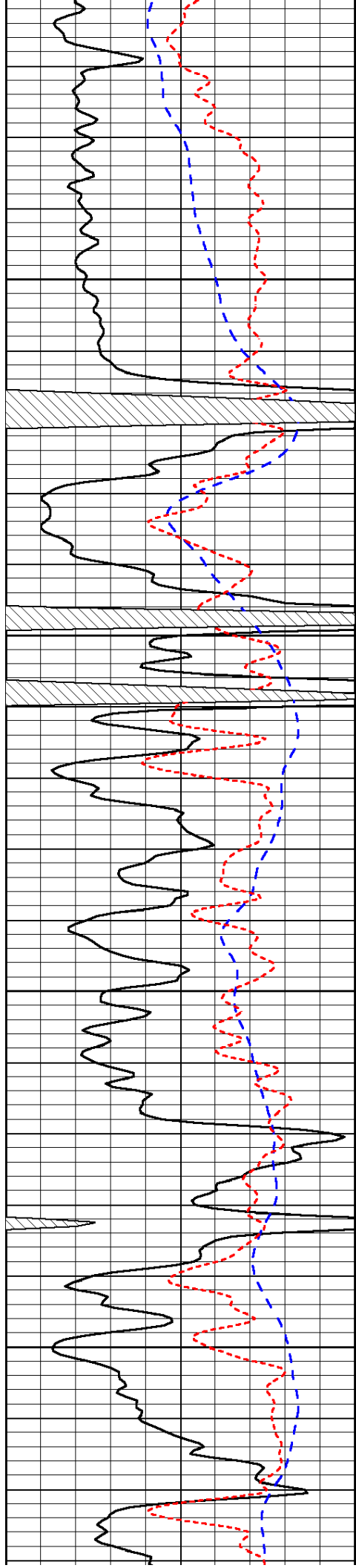
-31

-31

-32

-31

-31

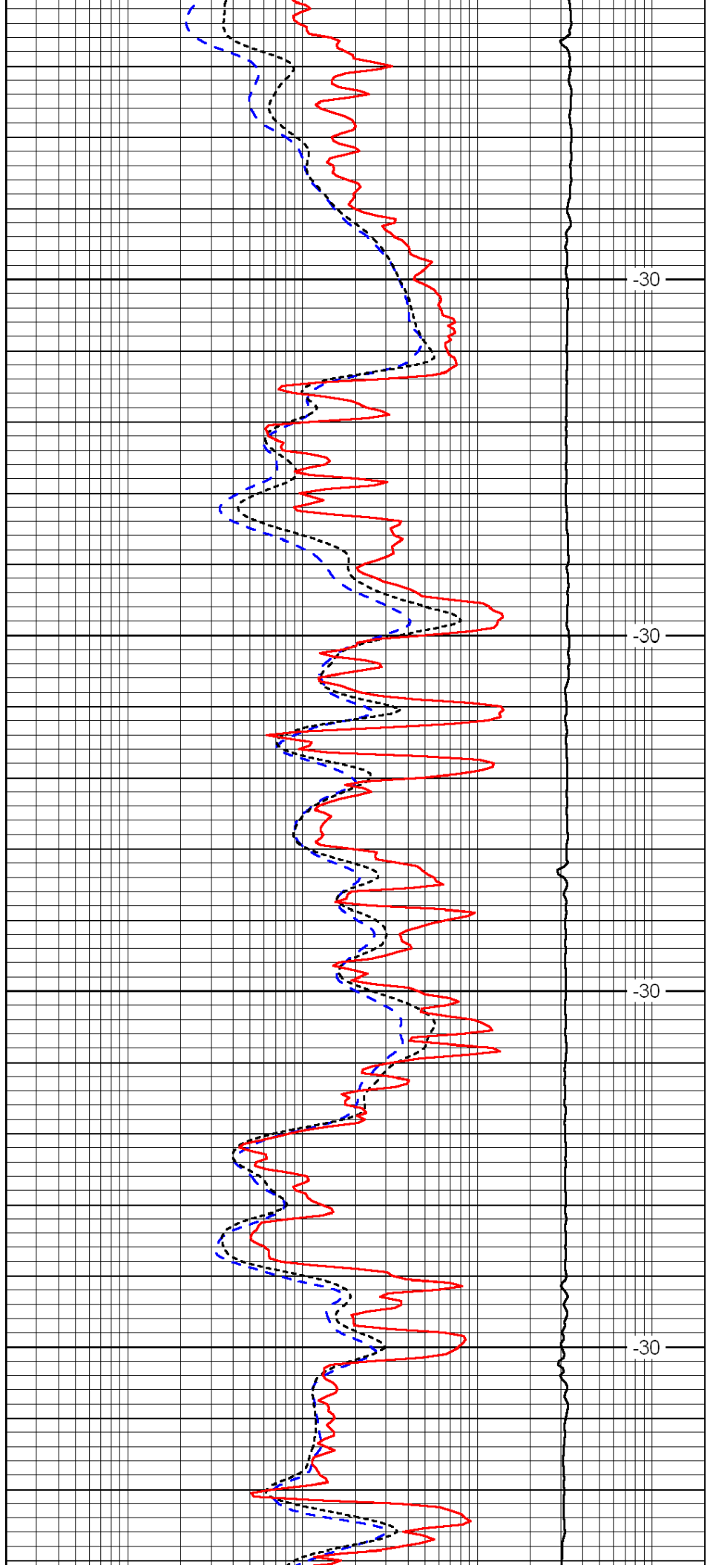


4950

5000

5050

5100

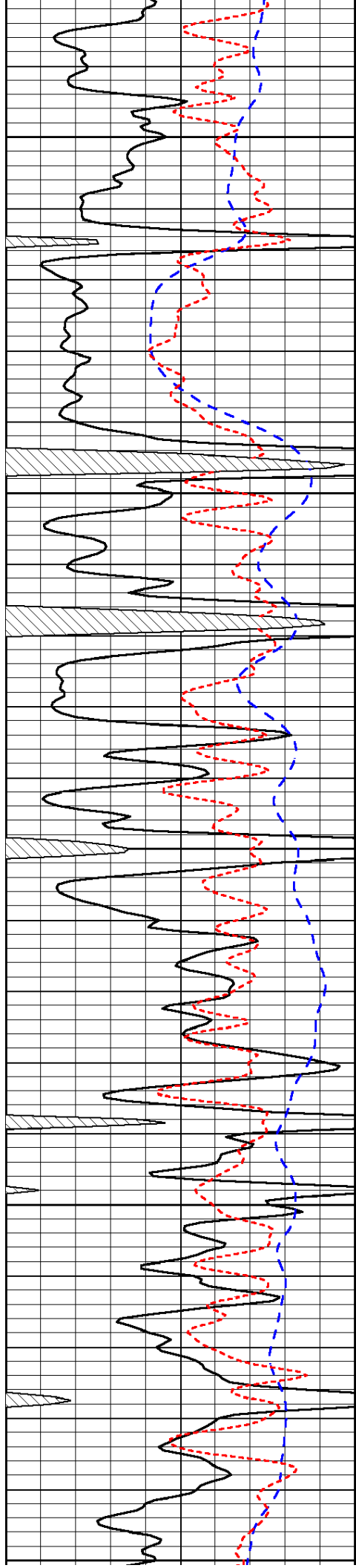


-30

-30

-30

-30



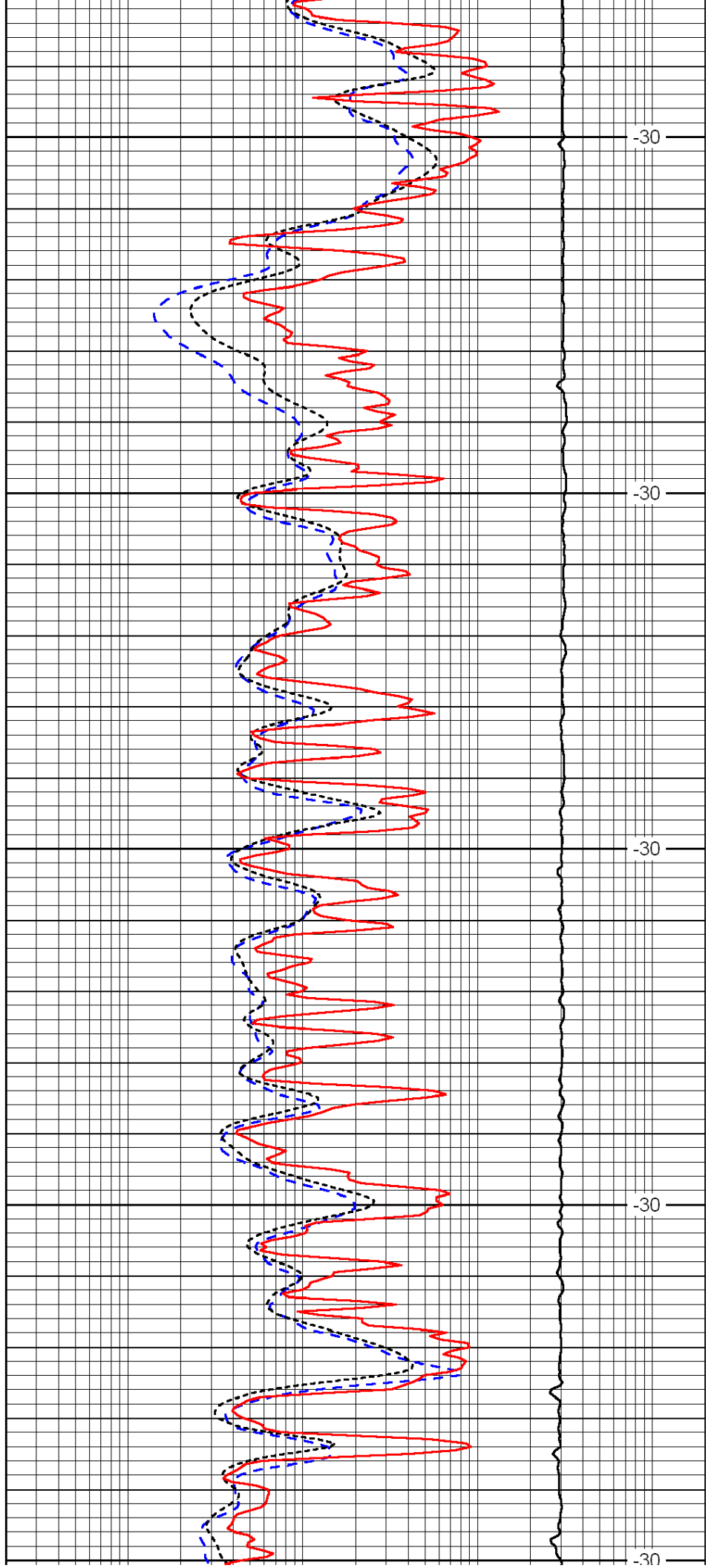
5150

5200

5250

5300

5350



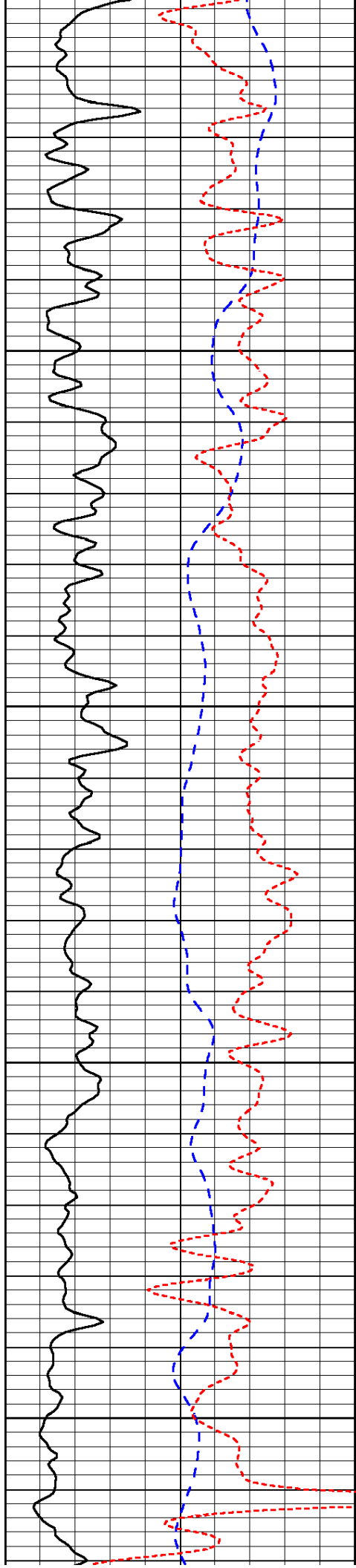
-30

-30

-30

-30

-30

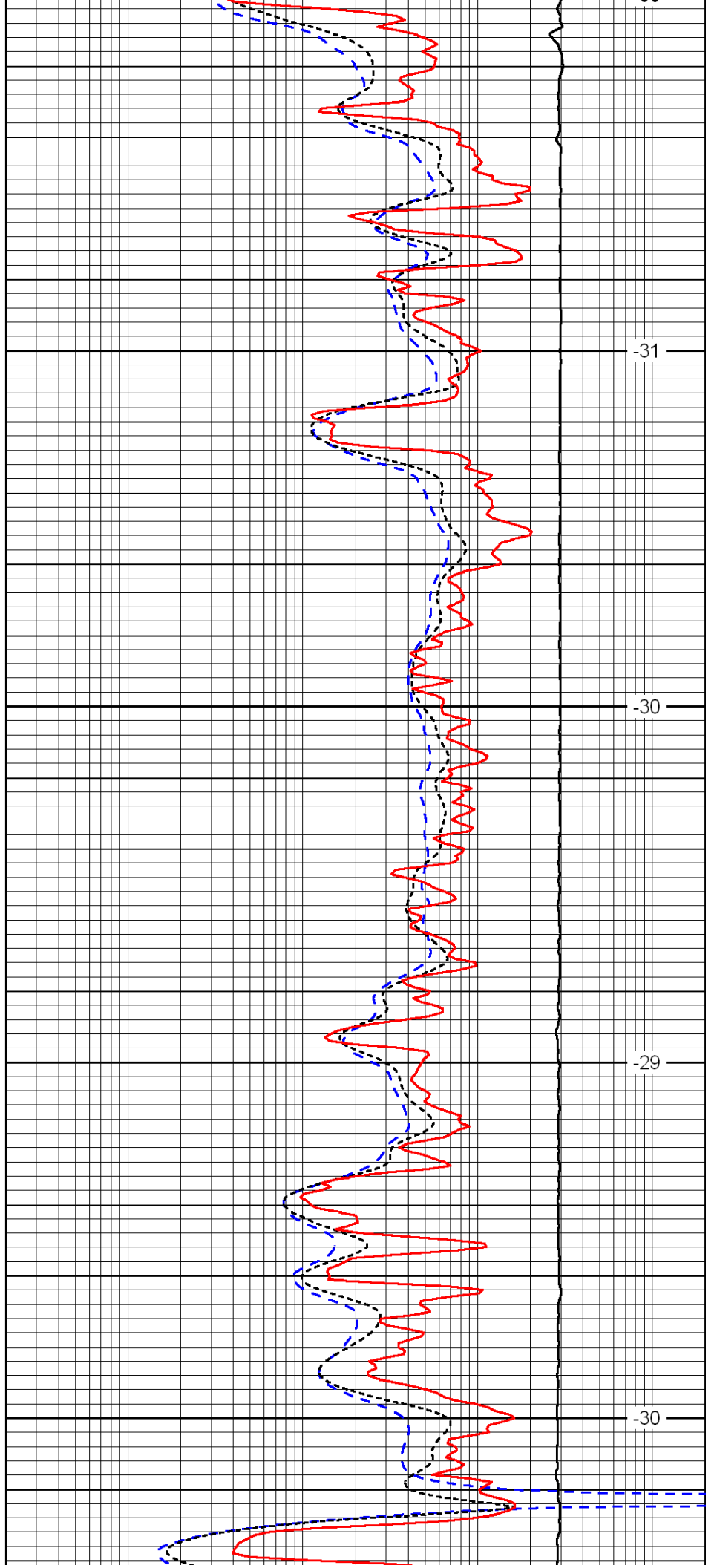


5400

5450

5500

5550

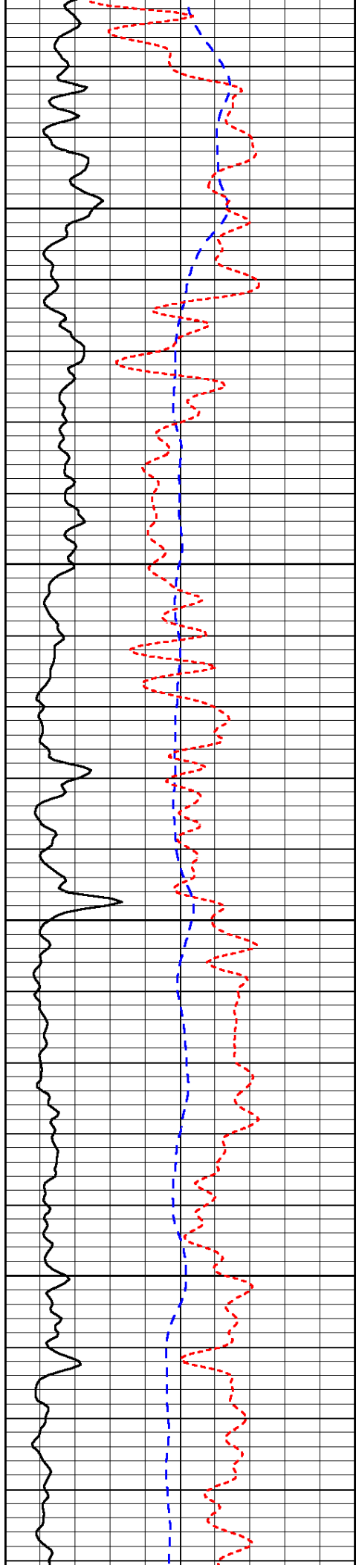


-31

-30

-29

-30

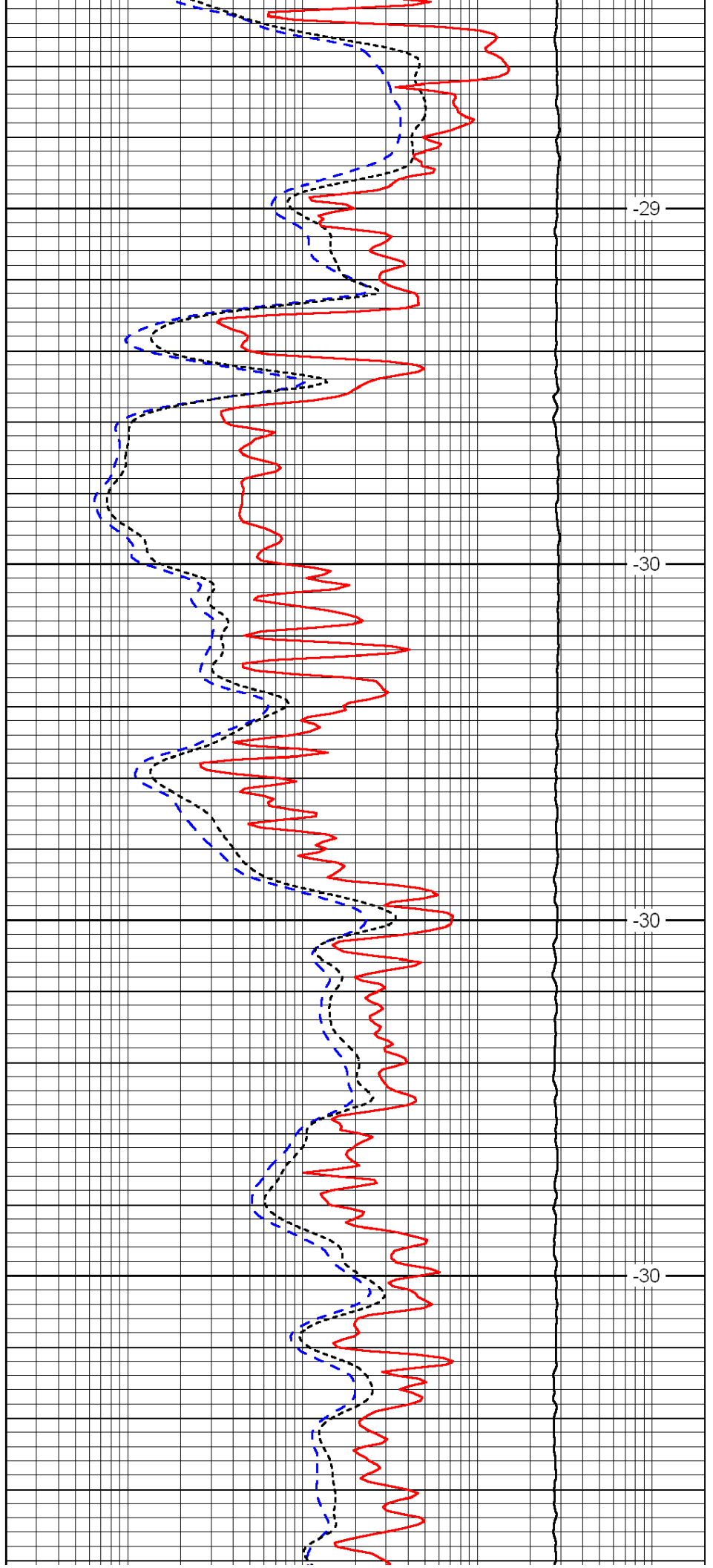


5600

5650

5700

5750

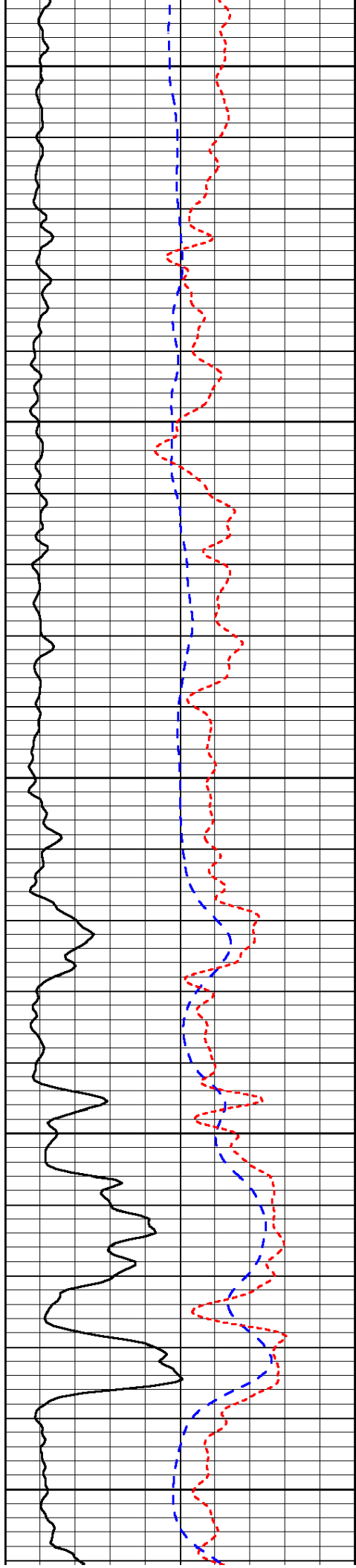


-29

-30

-30

-30



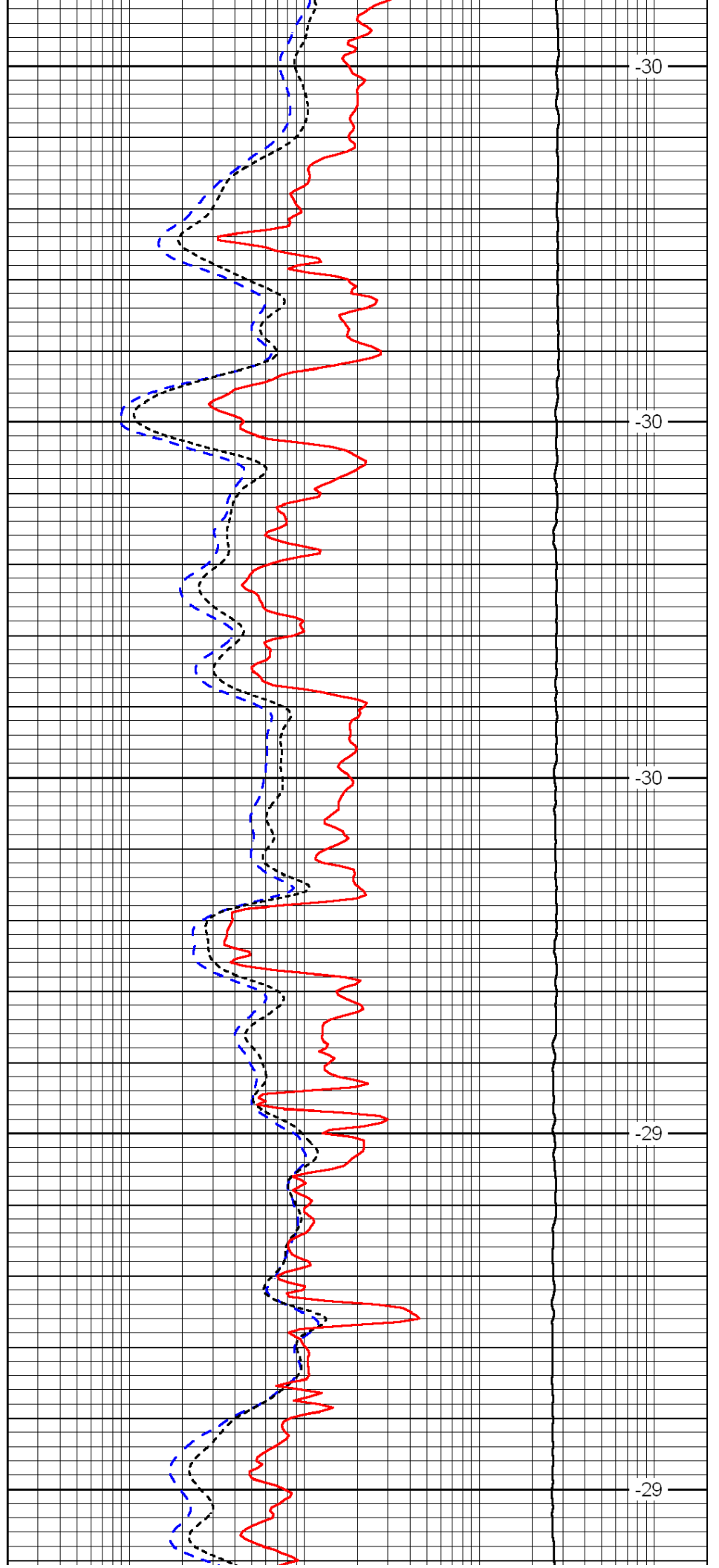
5800

5850

5900

5950

6000



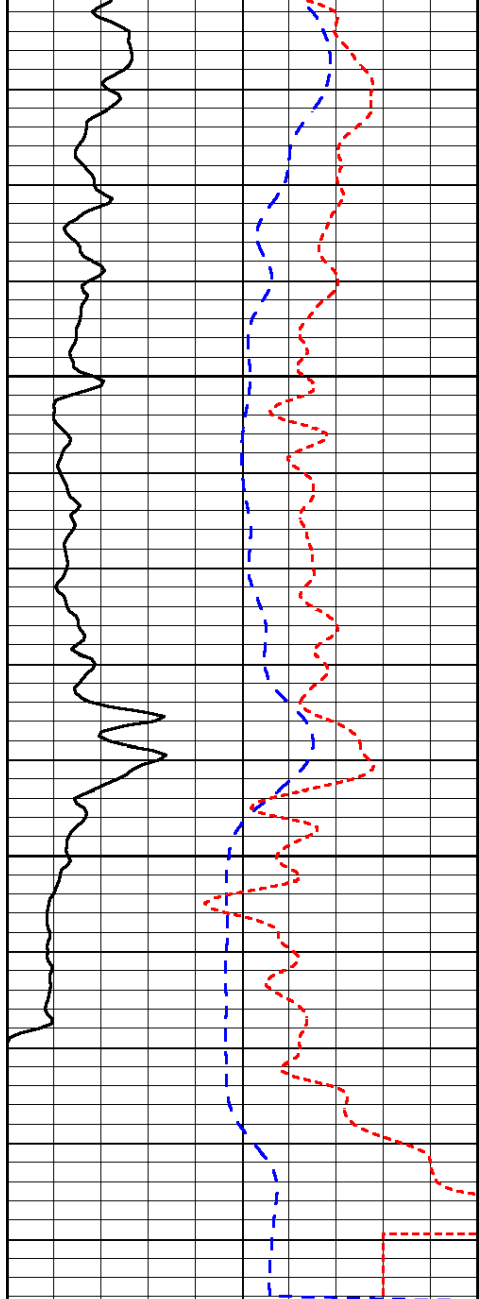
-30

-30

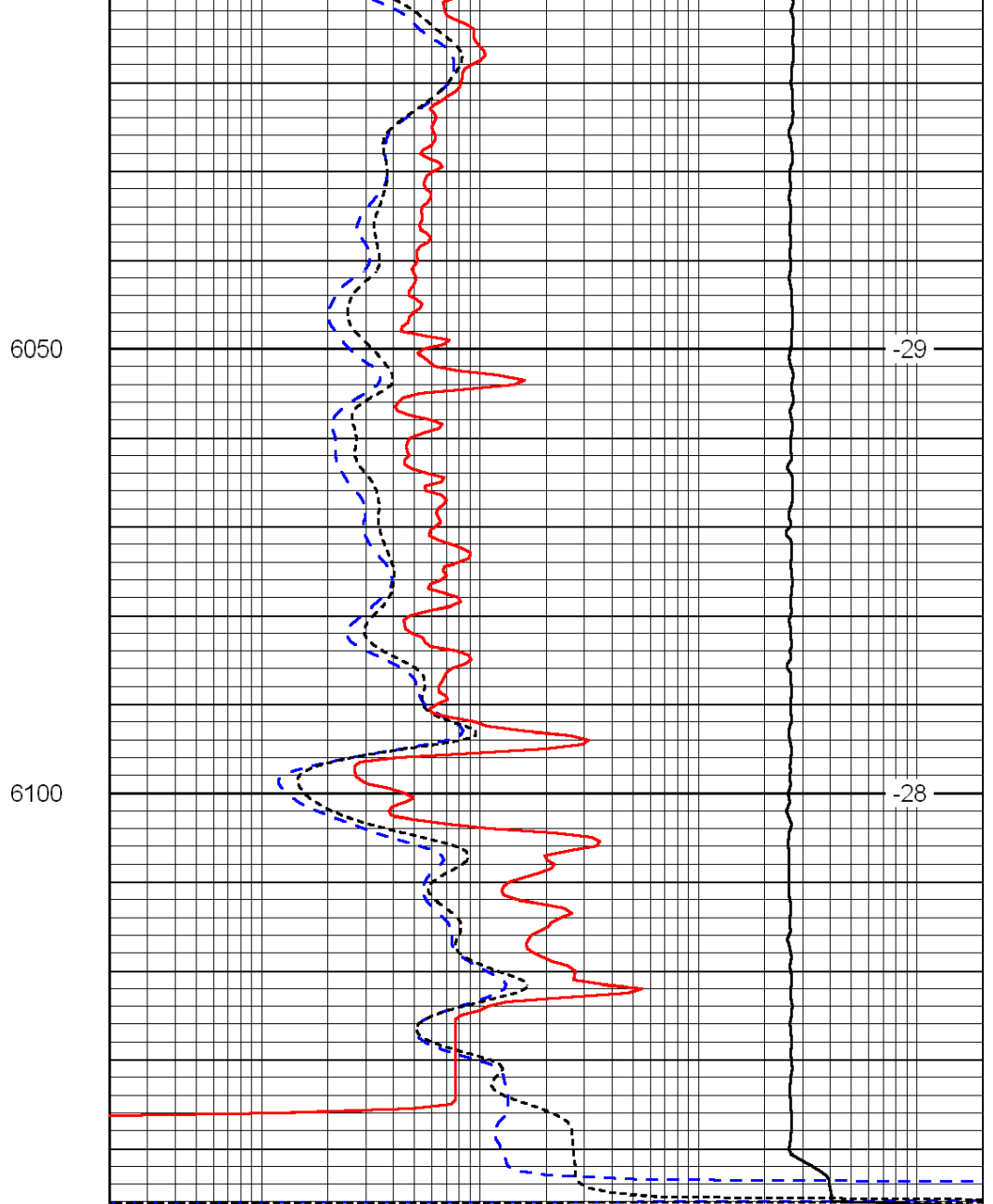
-30

-29

-29



0	Gamma Ray	150
-200	SP (mV)	0
-160	Rxo / Rt	40



0.2	Deep Resistivity	2000
0.2	Medium Resistivity	2000
0.2	Shallow Resistivity	2000
15000	Line Tension	0

LSPD