



**Borehole Compensated
Sonic Log**

DIGITAL LOG (785) 625-3858

| | | | |
|------------------------|-------------------------------------|--------------------------|----------------|
| API No. | 15-195-22,645-00-00 | | |
| Company | Murfin Drilling Co., Inc. | | |
| Well | Dietz "J" No. 1-16 | | |
| Field | Wildcat | | |
| County | Trego | State | Kansas |
| Location | 1150' FSL & 750' FWL | | |
| Sec: | 16 | Twp: | 12 S Rge: 24 W |
| Permanent Datum | Ground Level | Elevation | 2473 |
| Log Measured From | Kelly Bushing | 11 Ft. Above Perm. Datum | |
| Drilling Measured From | Kelly Bushing | | |
| Other Services | CNL/CDL MEL/DIL | | |
| Elevation | K.B. 2484 D.F. 2473 G.L. 2473 | | |

| | | | |
|------------------------|-----------------|-------|-------------|
| Date | 04/09/2010 | | |
| Run Number | Two | | |
| Type Log | BHC Sonic | | |
| Depth Driller | 4400 | | |
| Depth Logger | 4400 | | |
| Bottom Logged Interval | 4389 | | |
| Top Logged Interval | 200 | | |
| Type Fluid In Hole | Chemical | | |
| Salinity, PPM CL | 6,500 | | |
| Density | 9.1 | | |
| Level | Full | | |
| Max. Rec. Temp. F | 122 | | |
| Operating Rig Time | 5 Hours | | |
| Equipment -- Location | 10 | Hours | |
| Recorded By | Jason Wellbrock | | |
| Witnessed By | Brad Ryan | | Jim Schuler |

| Run No. | Bit | Borehole Record | | Casing Record | |
|---------|-------|-----------------|------|---------------|-----|
| | | From | To | From | To |
| 1 | 12.25 | 00 | 225 | 8.625 | 24# |
| 2 | 7.875 | 225 | 4400 | | |
| | | | | | |
| | | | | | |
| | | | | | |
| | | | | | |
| | | | | | |
| | | | | | |
| | | | | | |

<<< Fold Here >>>

All interpretations are opinions based on inferences from electrical or other measurements and we cannot and do not guarantee the accuracy or correctness of any interpretation, and we shall not, except in the case of gross or willful negligence on our part, be liable or responsible for any loss, costs, damages, or expenses incurred or sustained by anyone resulting from any interpretation made by any of our officers, agents or employees. These interpretations are also subject to our general terms and conditions set out in our current Price Schedule.

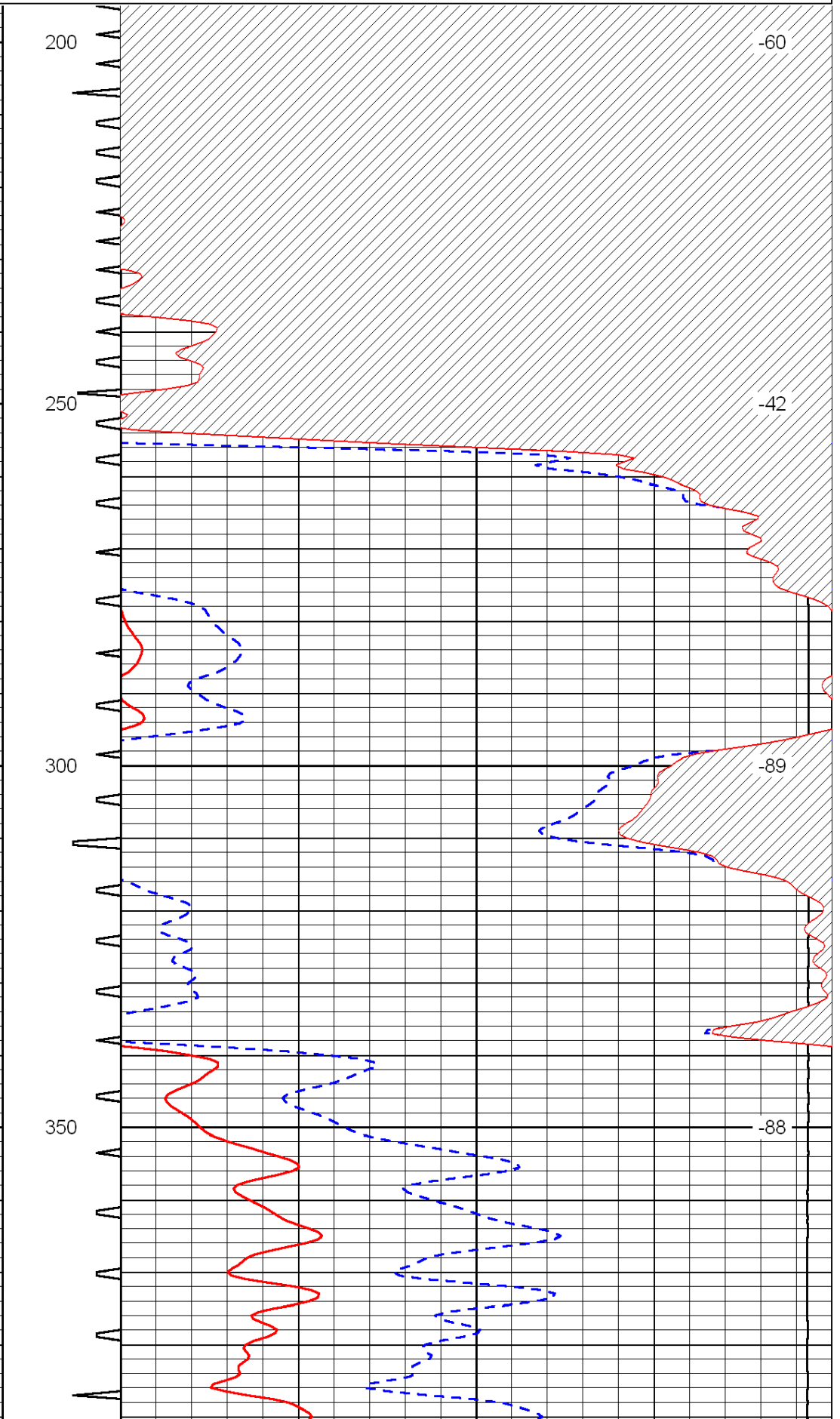
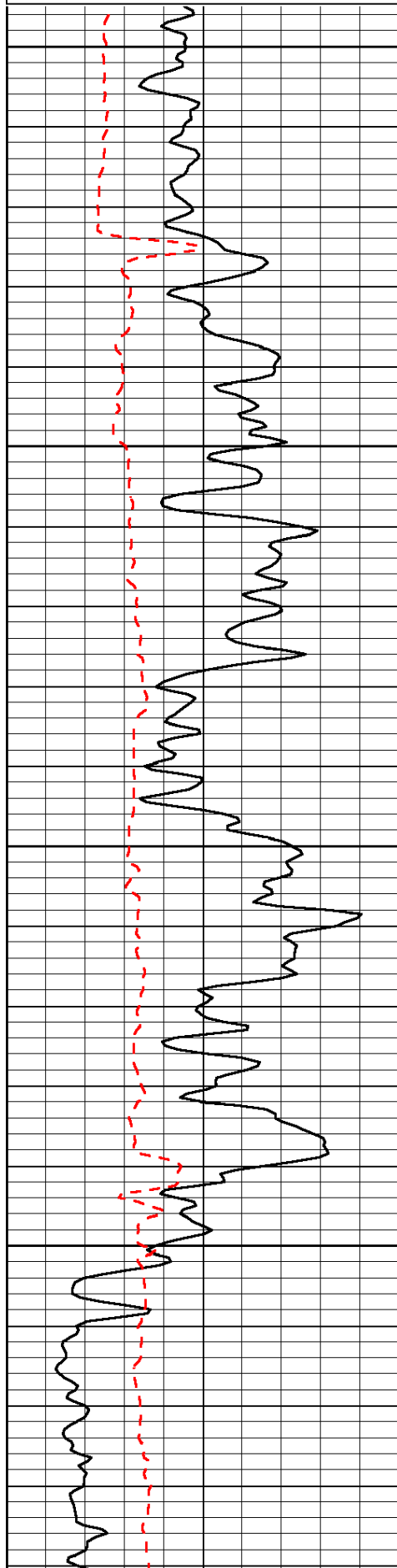
Comments

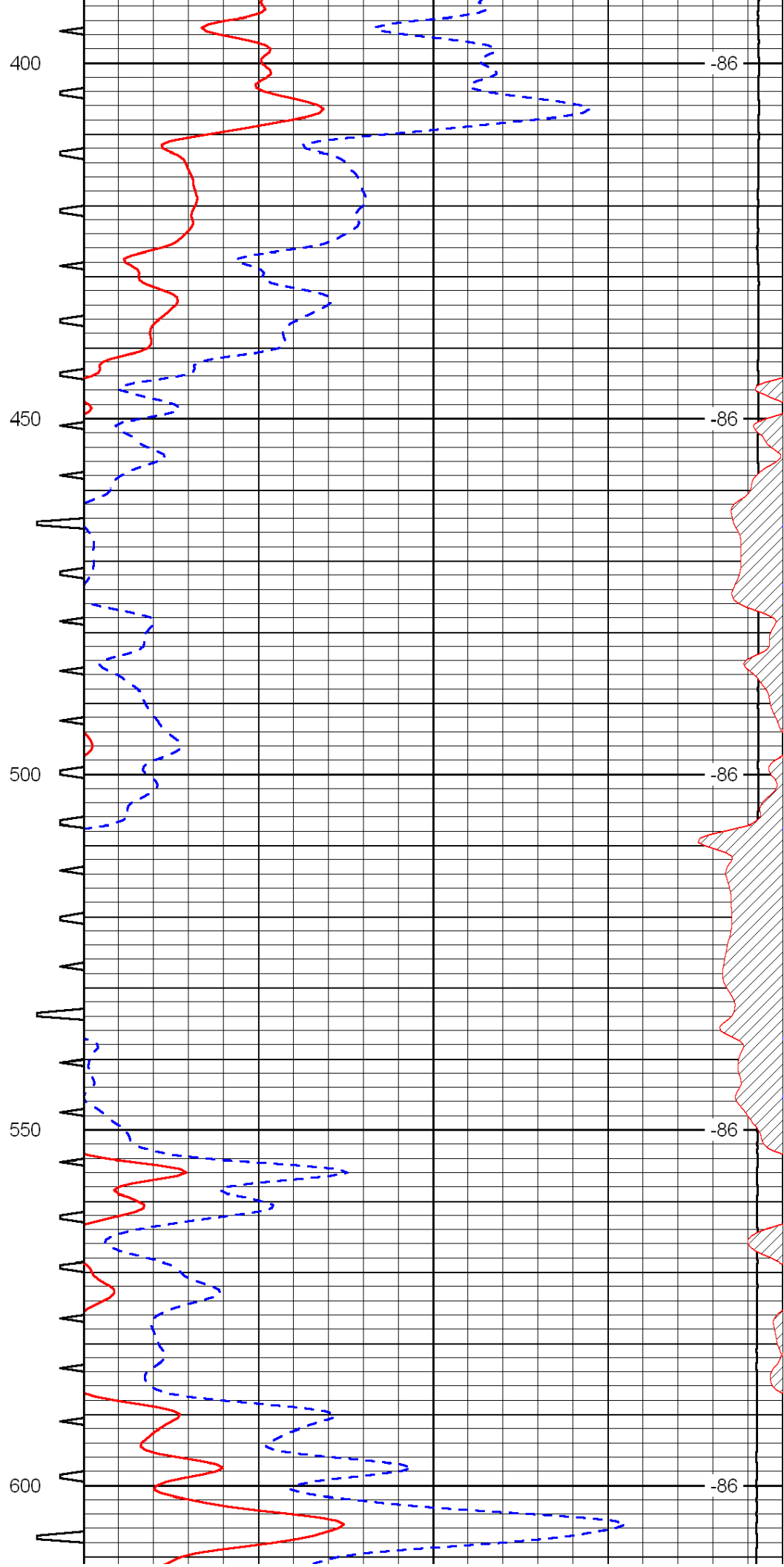
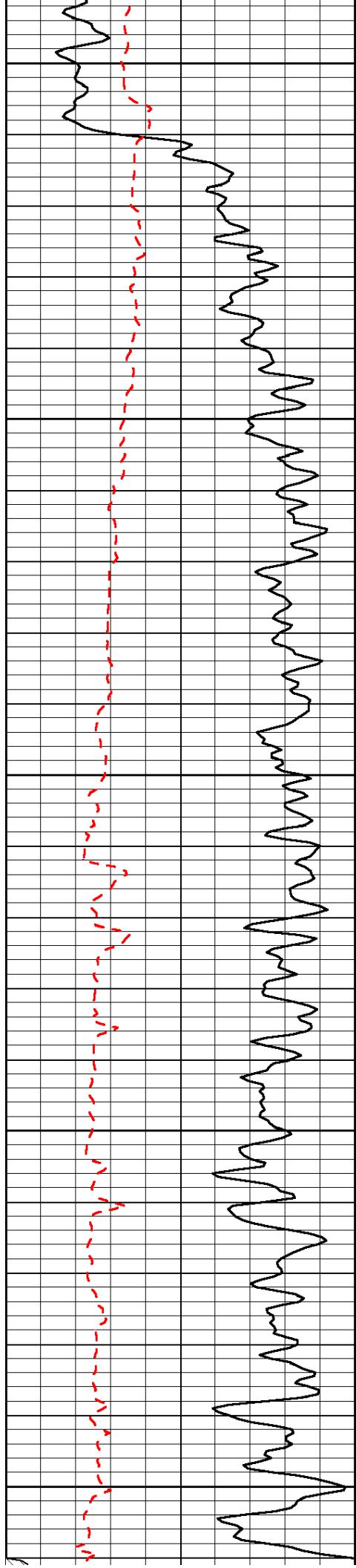
Thank you for using Log-Tech, Inc.
(785) 625-3858

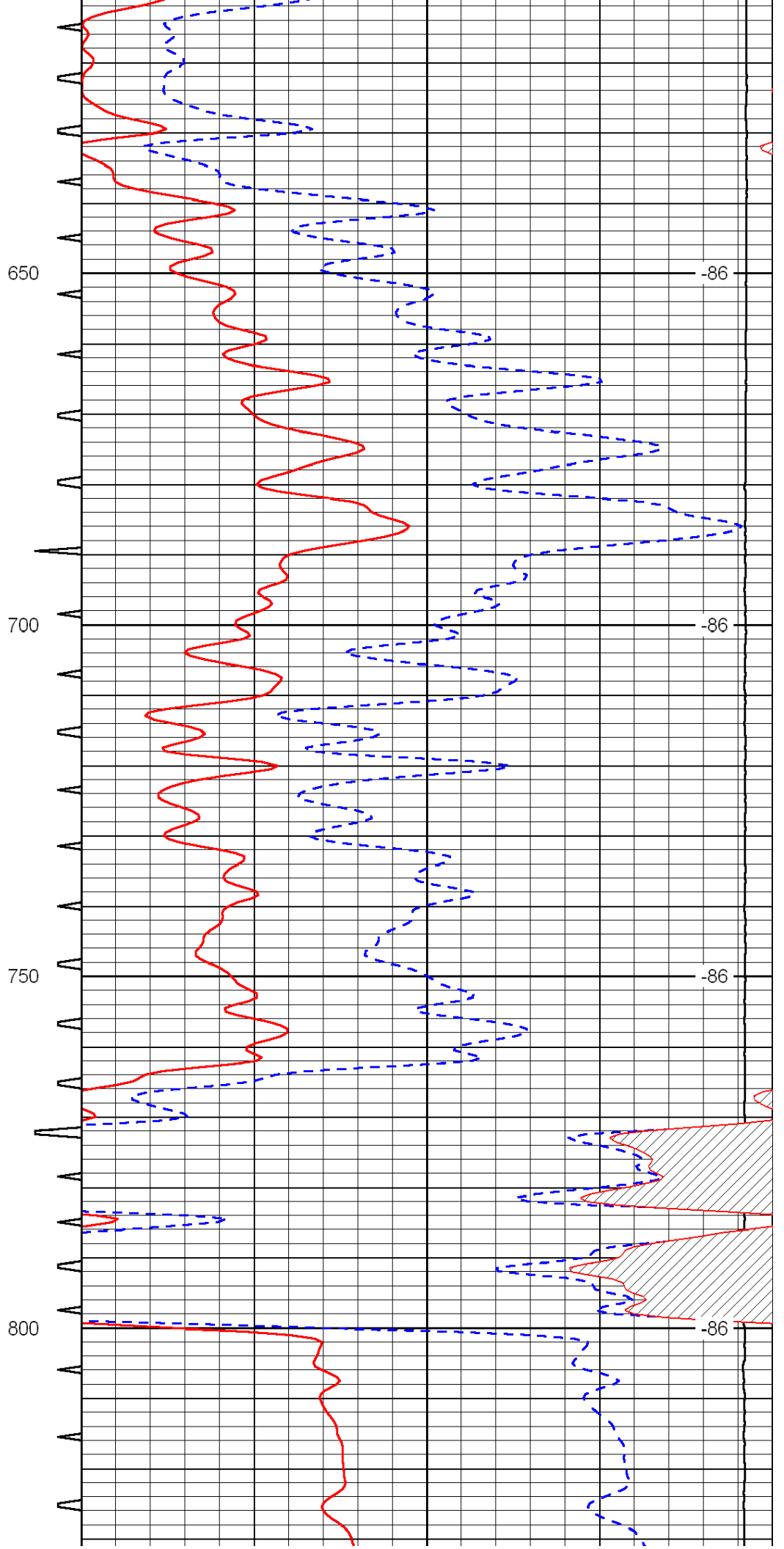
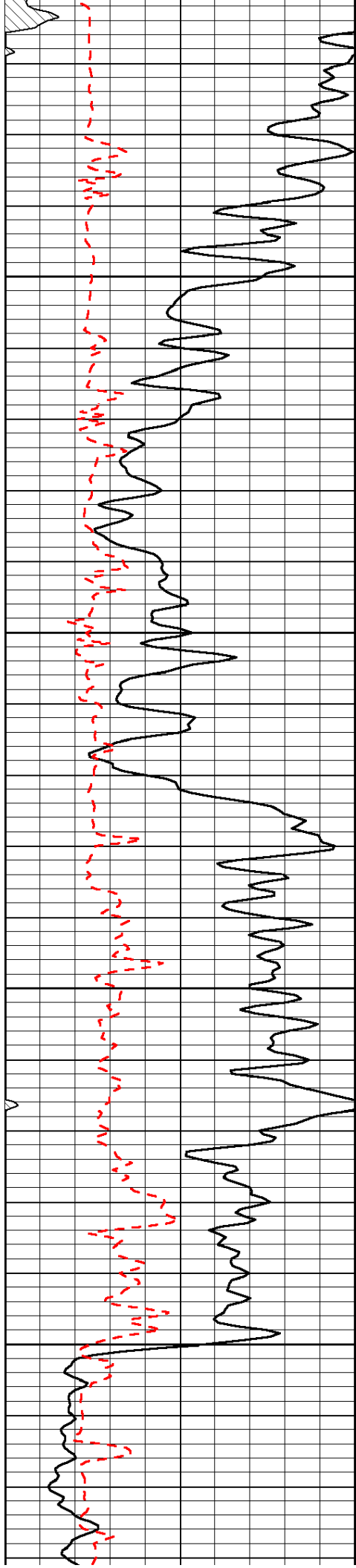
Voda Road, 1 S, 1 E, 1/2 S, E Into

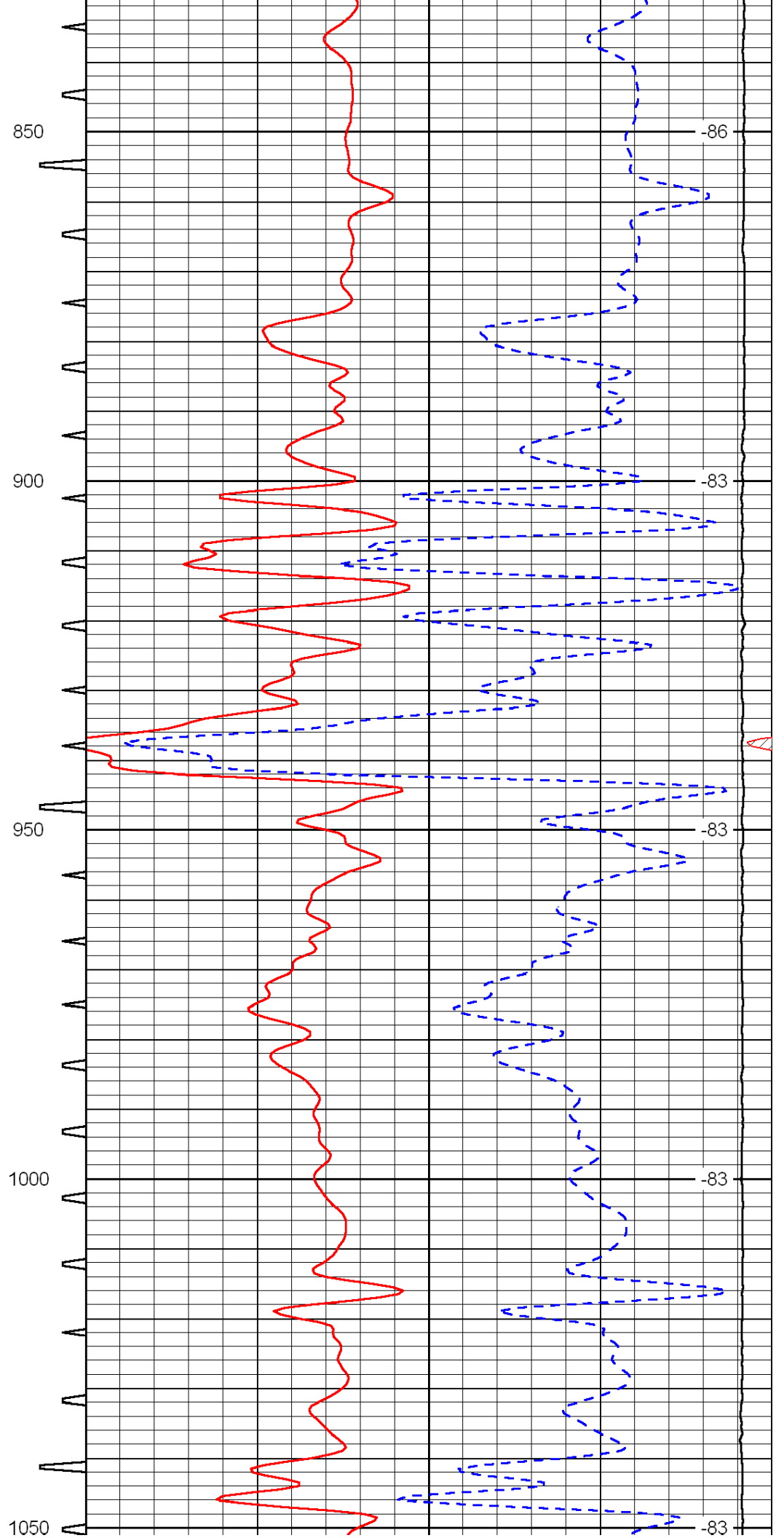
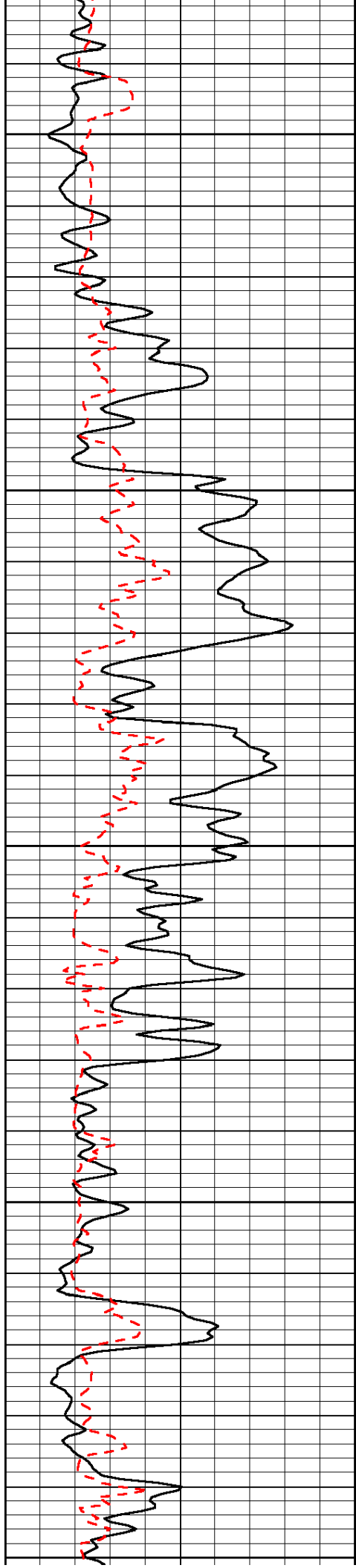
Database File: c:\warrior\data\murfin_dietz j no. 1-16\murfinhd.db
 Dataset Pathname: dil/murf2in
 Presentation Format: sonic
 Dataset Creation: Sat Apr 10 00:57:05 2010
 Charted by: Depth in Feet scaled 1:240

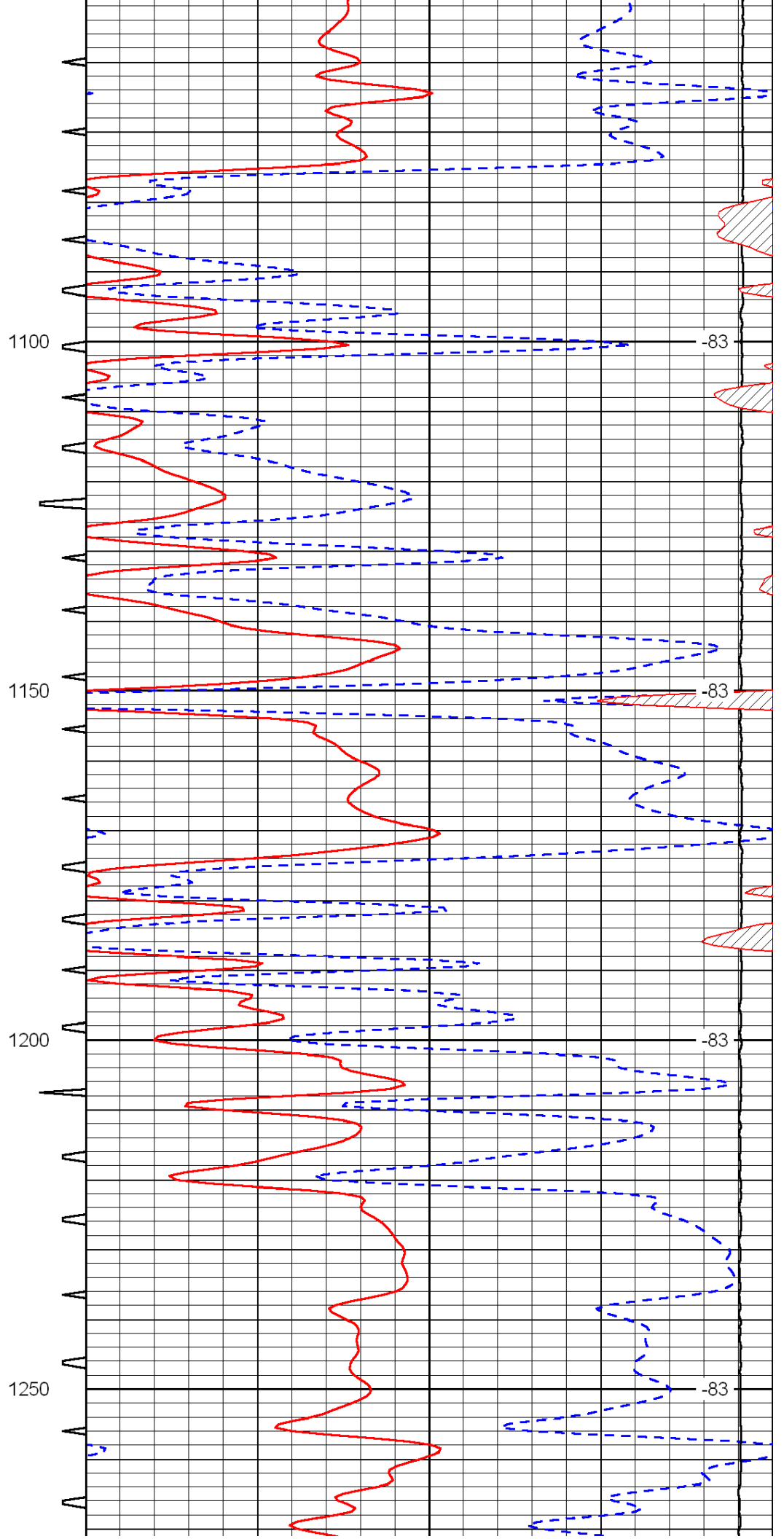
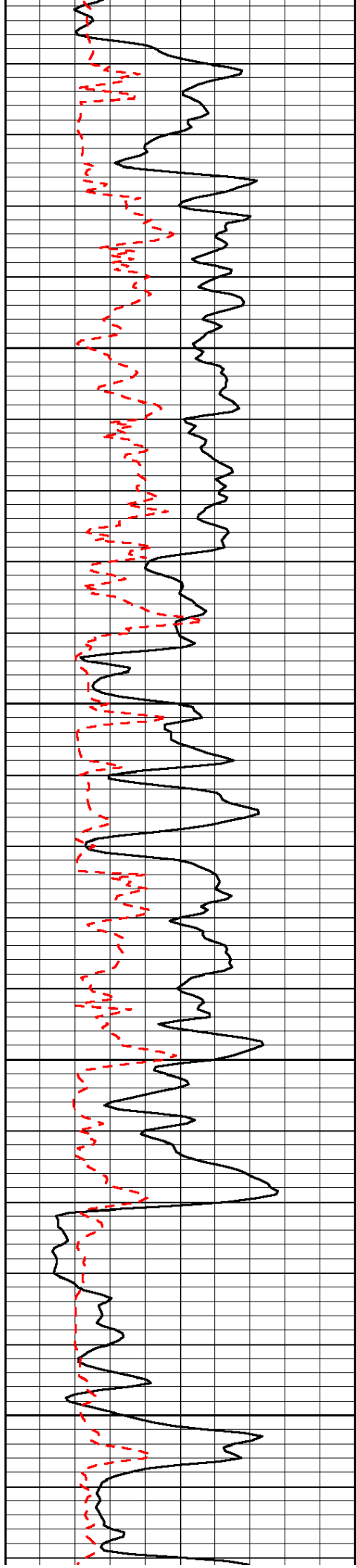
| | | | | | | |
|-----|-----------|-----|-----------|-------|----------------------|------|
| 0 | Gamma Ray | 150 | Sonic Int | 140 | Delta Time (usec/ft) | 40 |
| 150 | Gamma Ray | 300 | 5 | 0 | SPOR | -10 |
| 6 | Caliper | 16 | | 15000 | LTEN (lb) | 0 |
| | | | | | | LSPD |

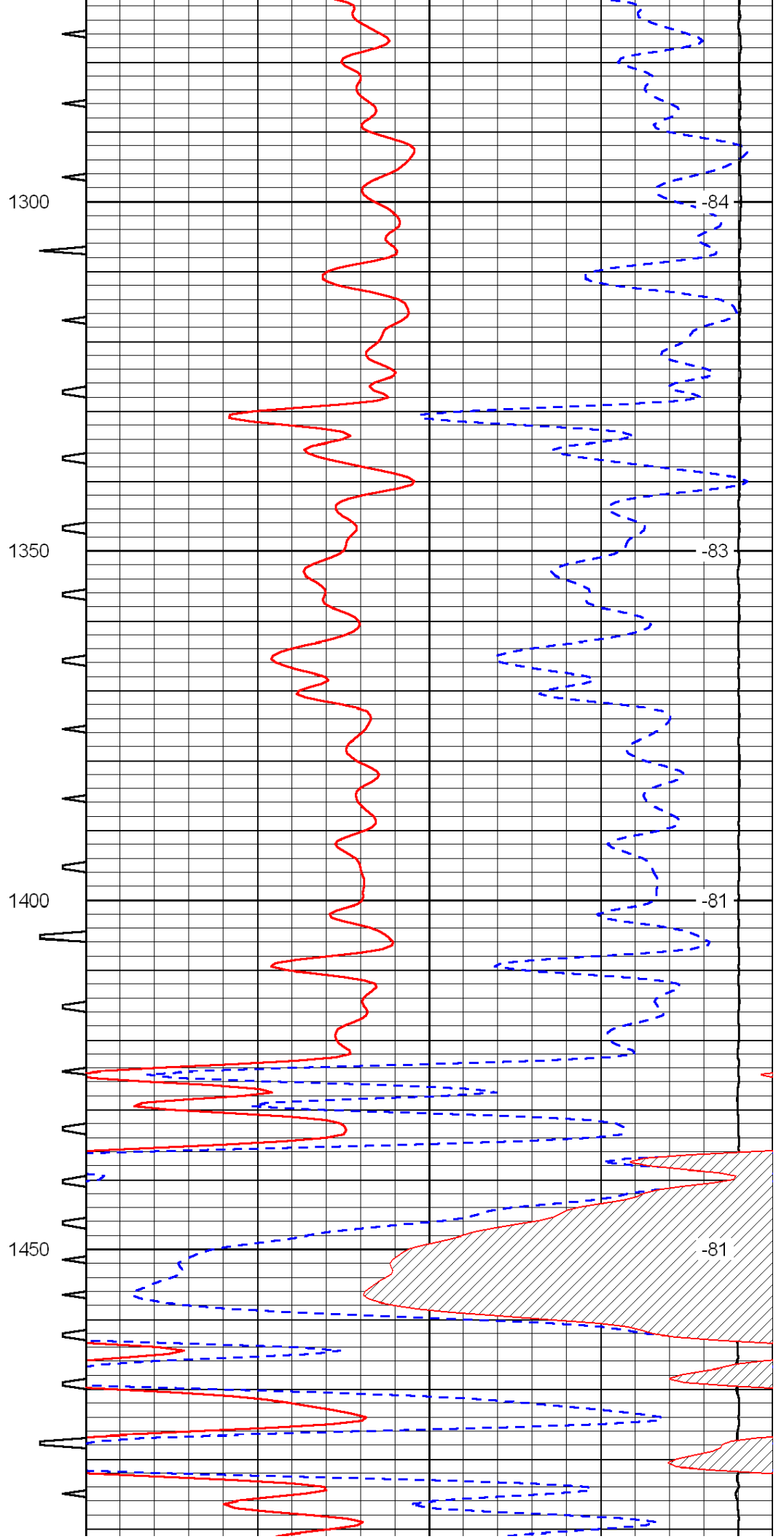
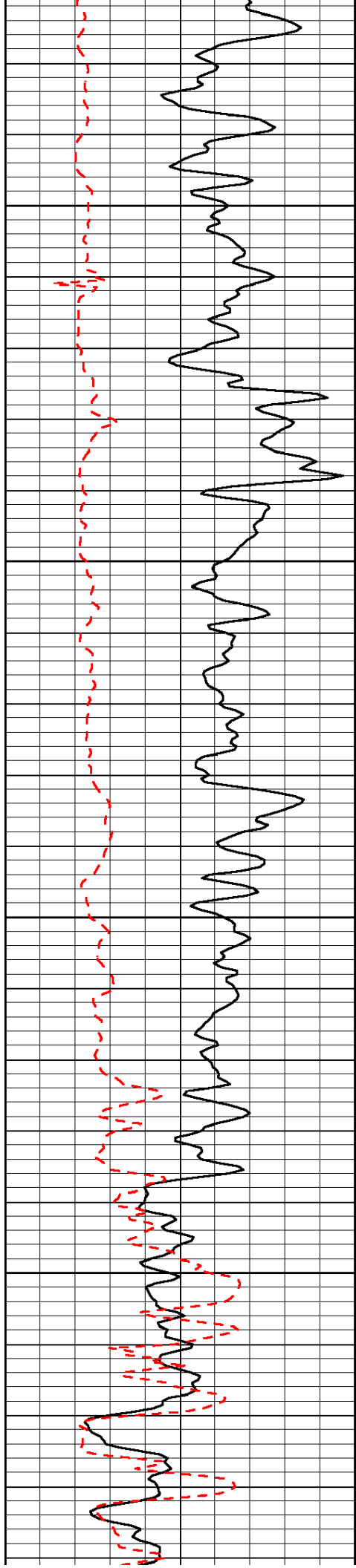


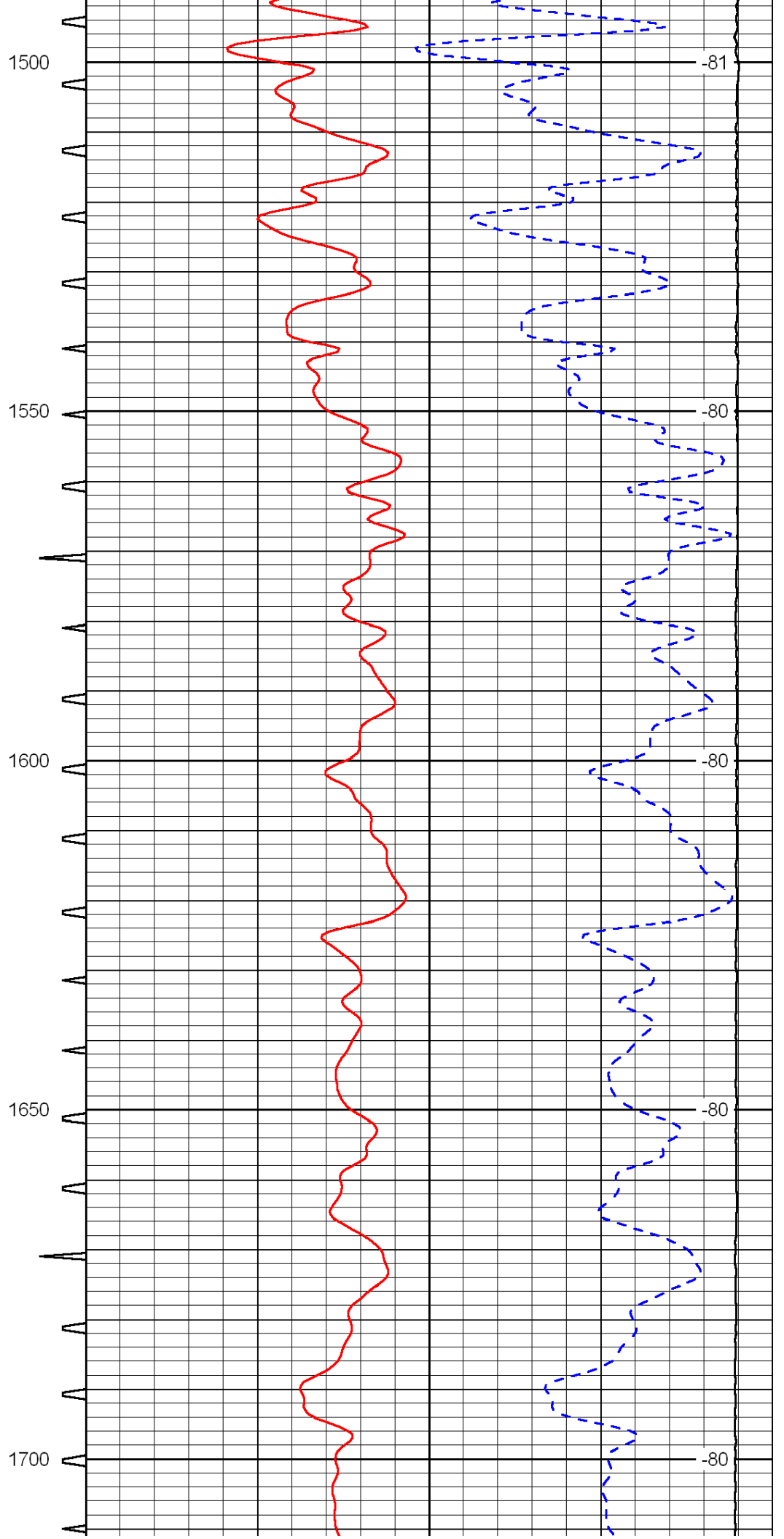
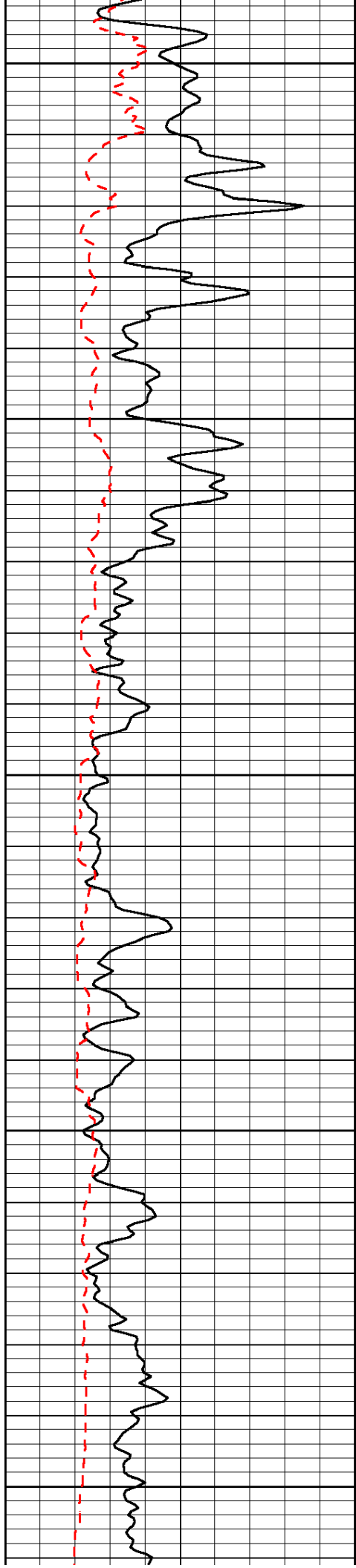


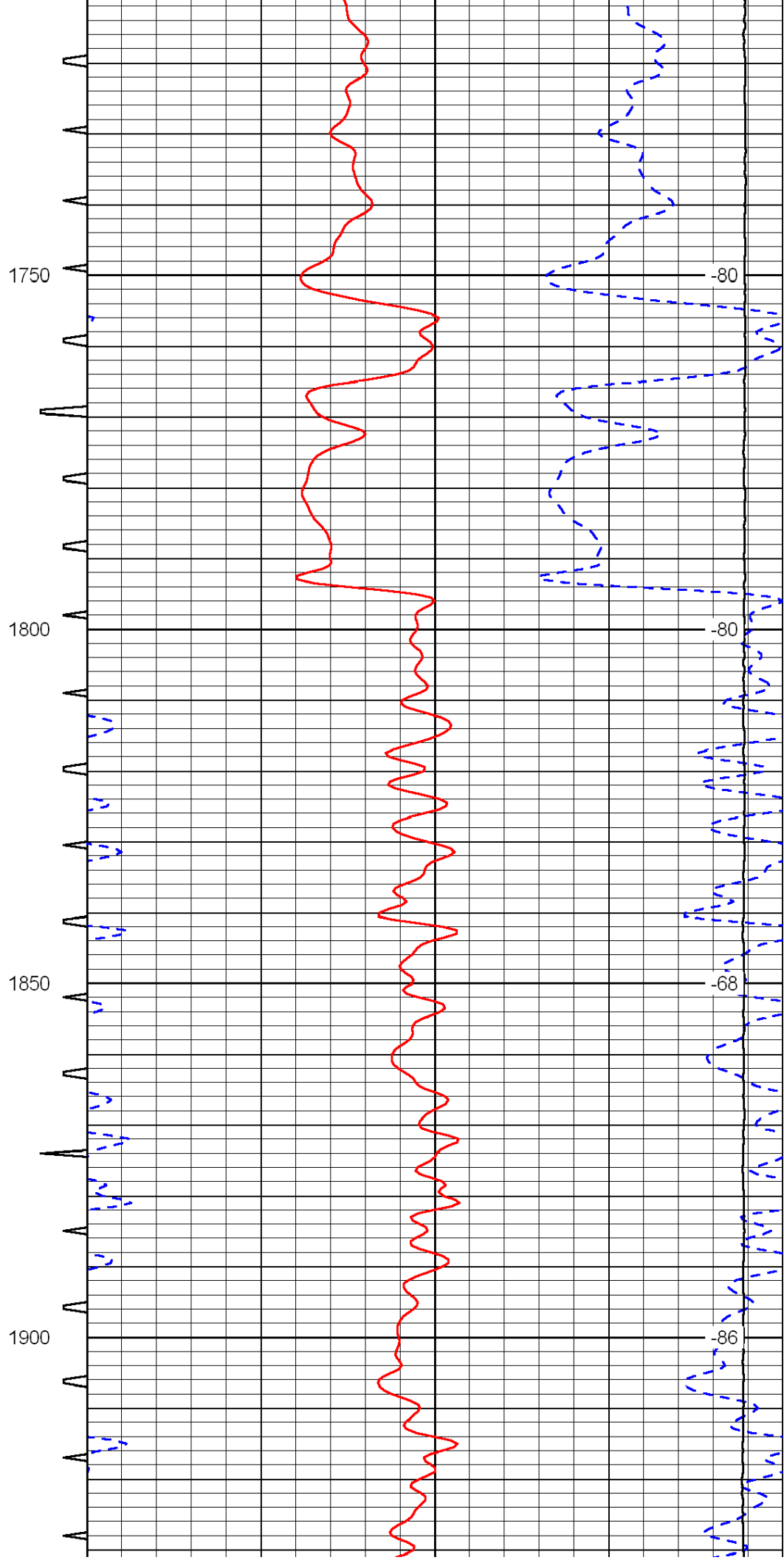
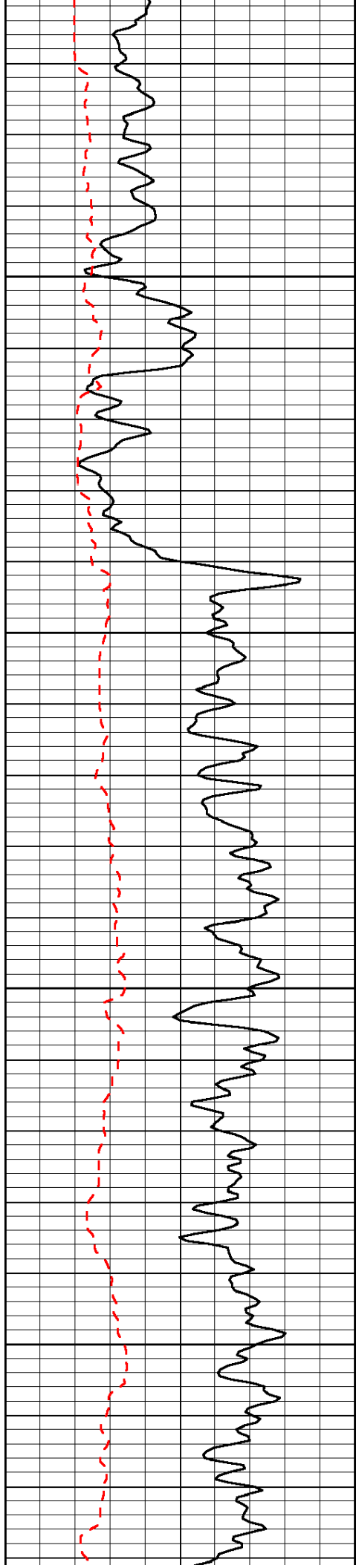


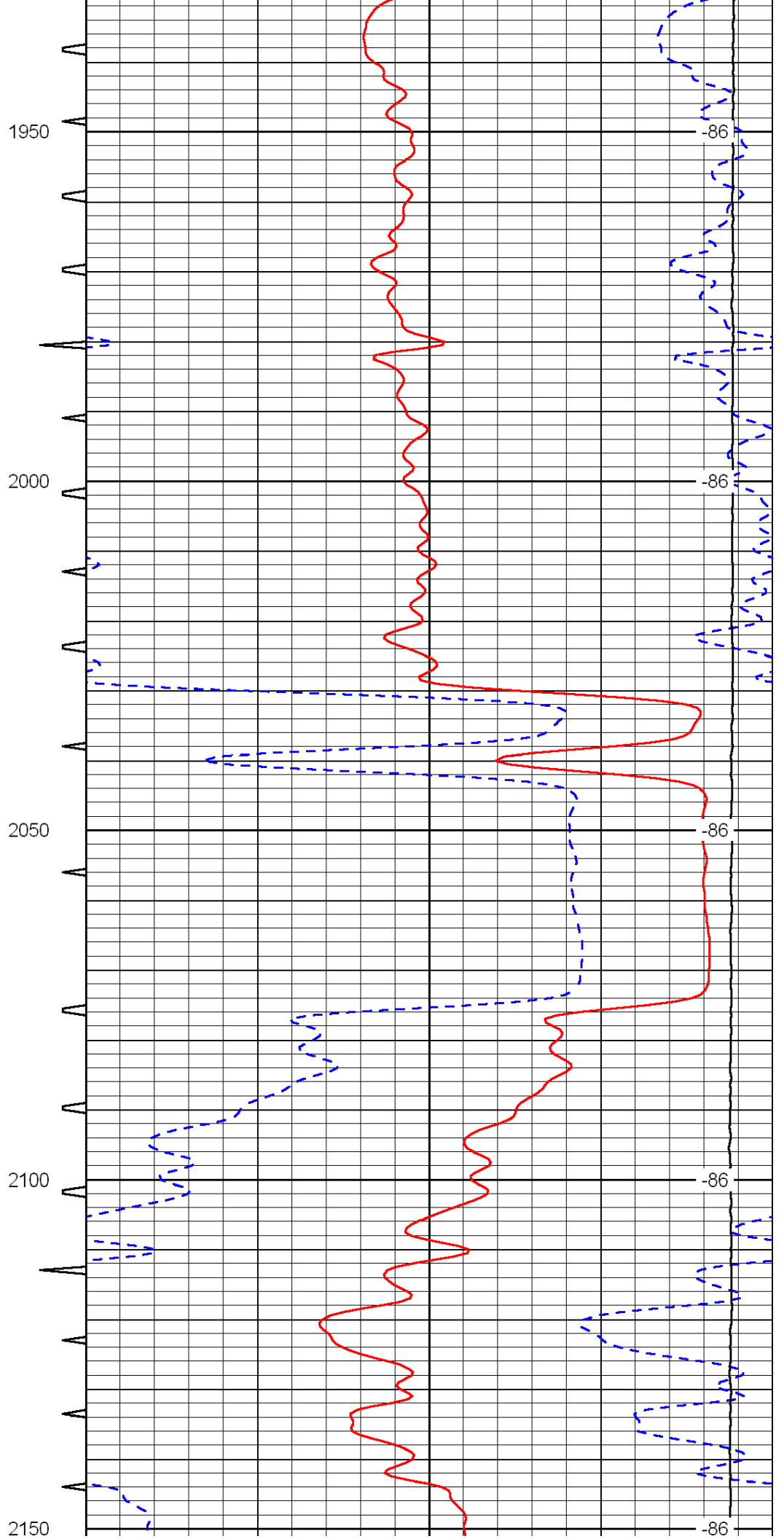
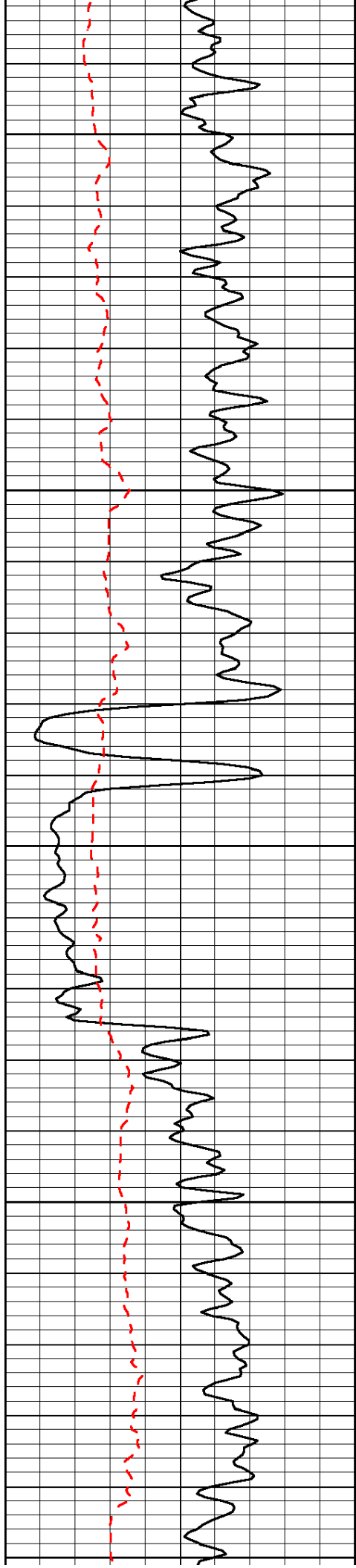


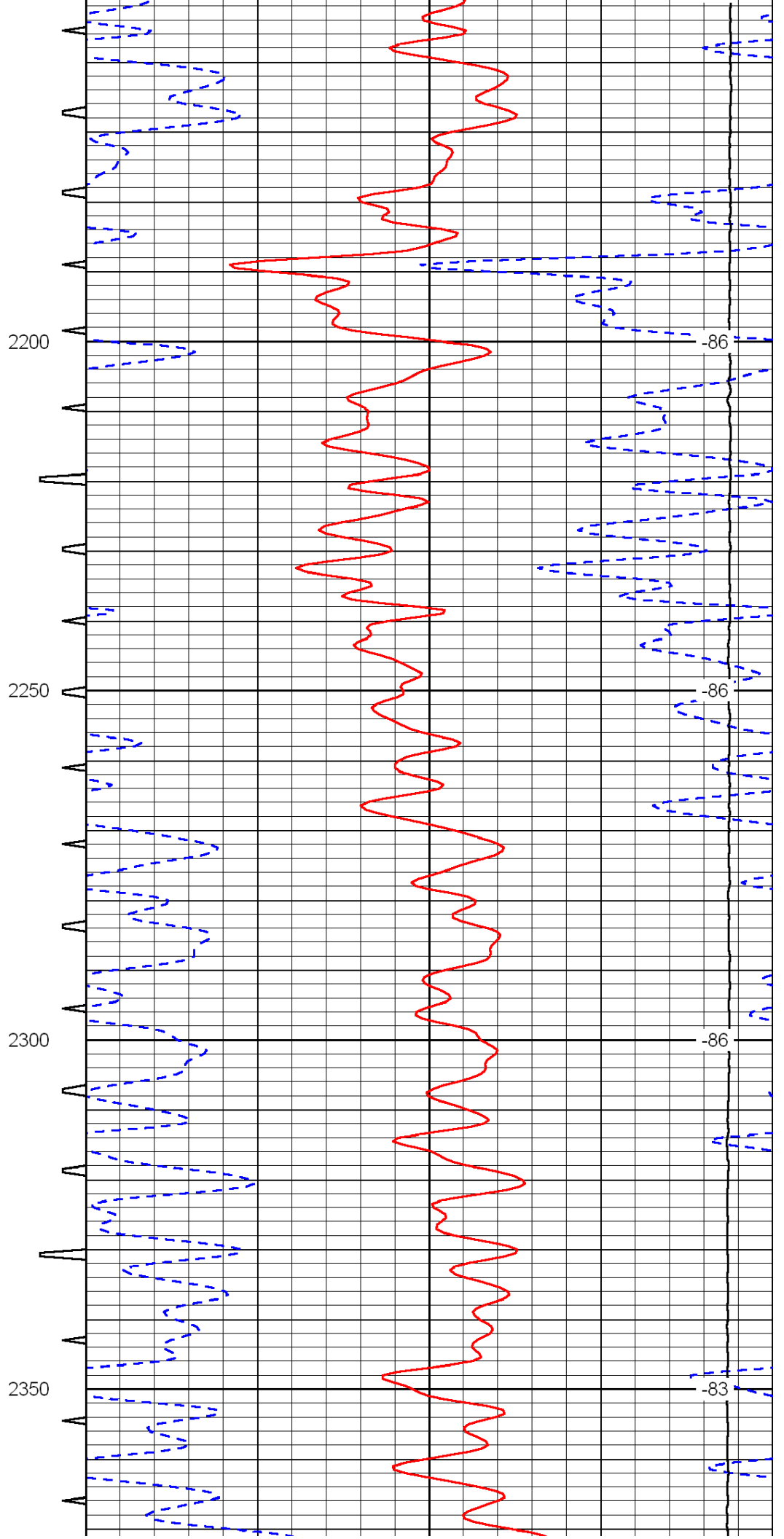
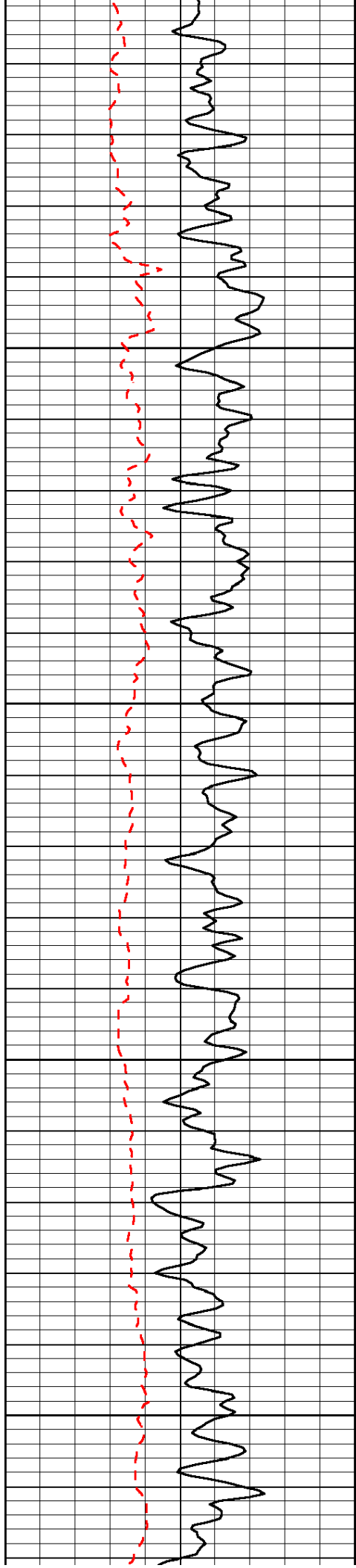


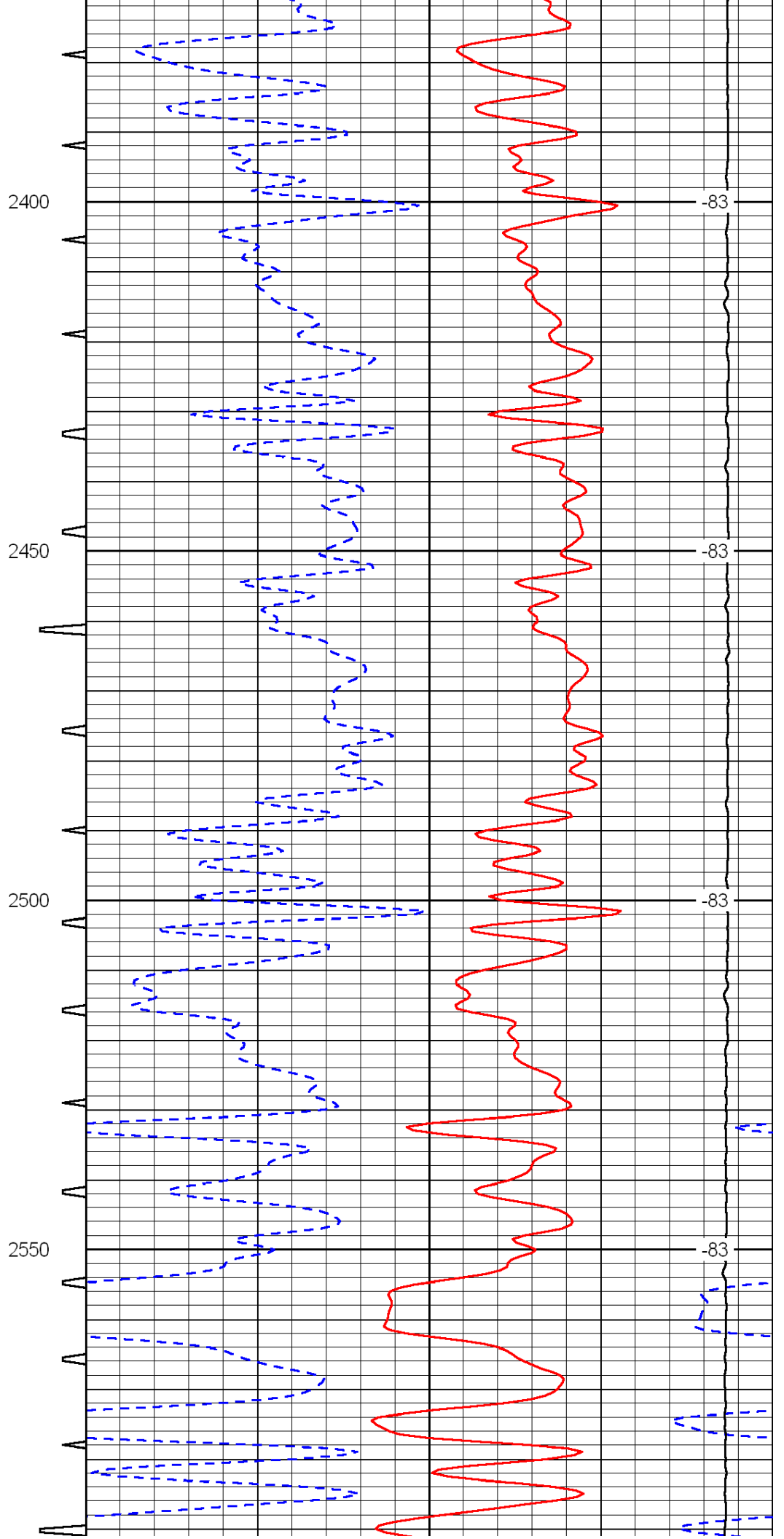
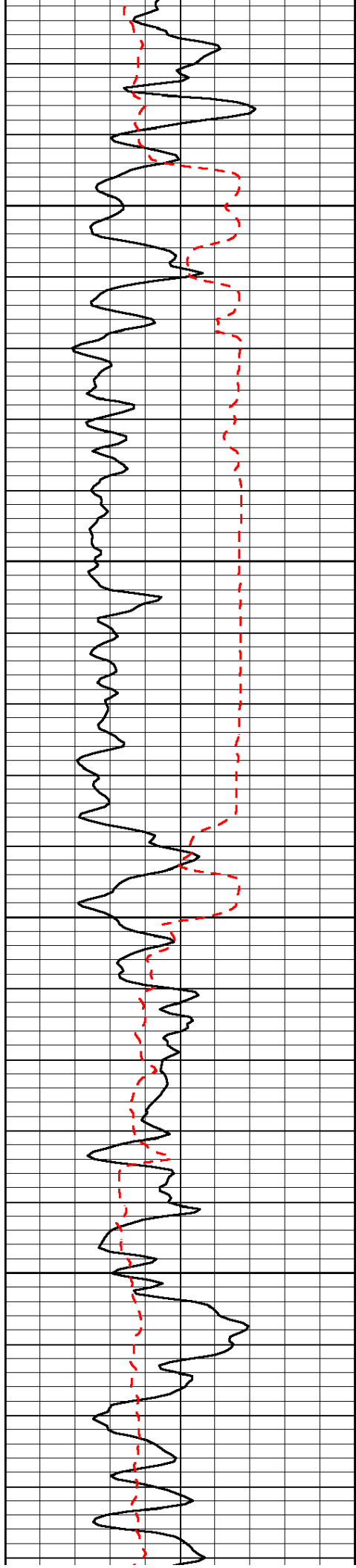


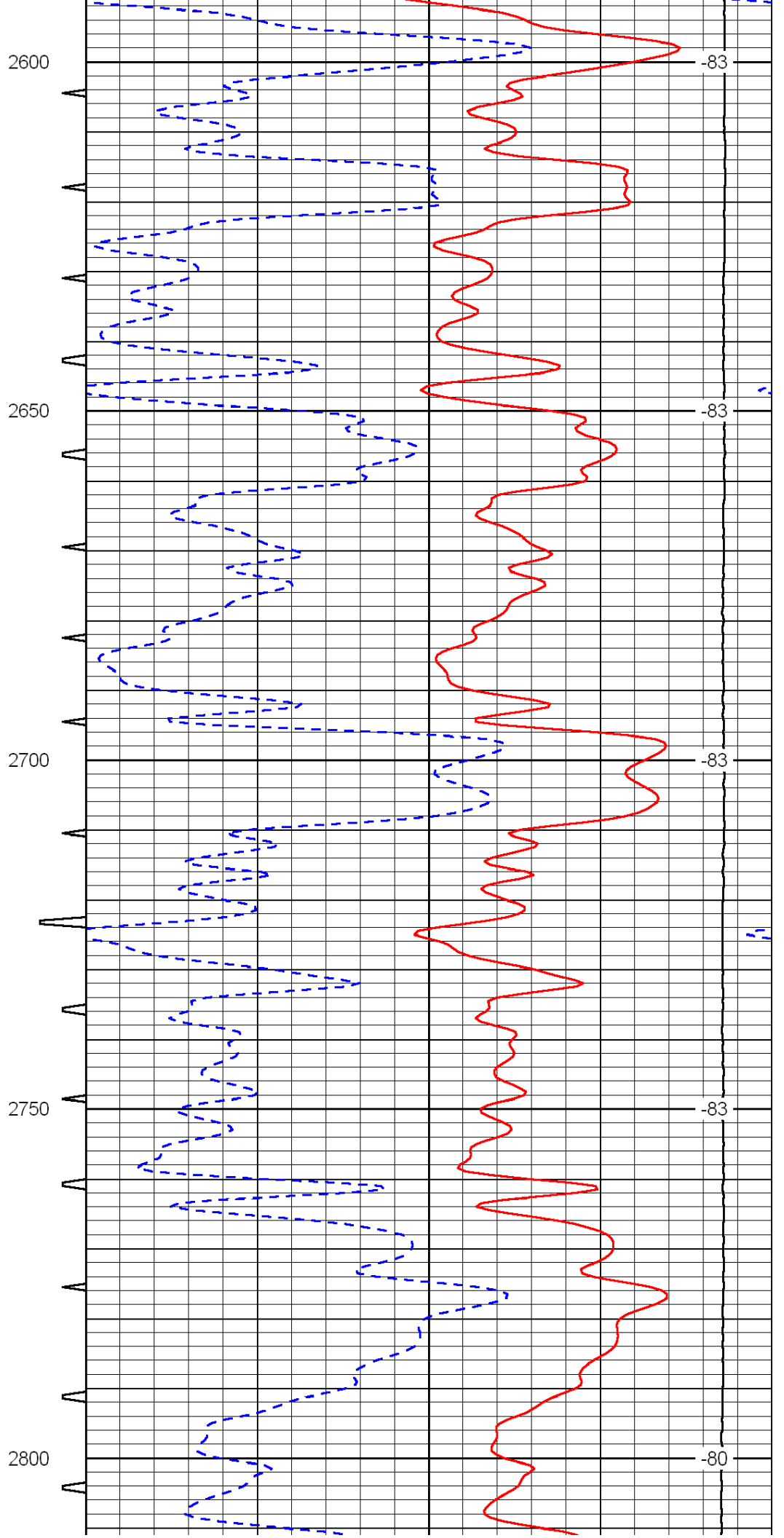
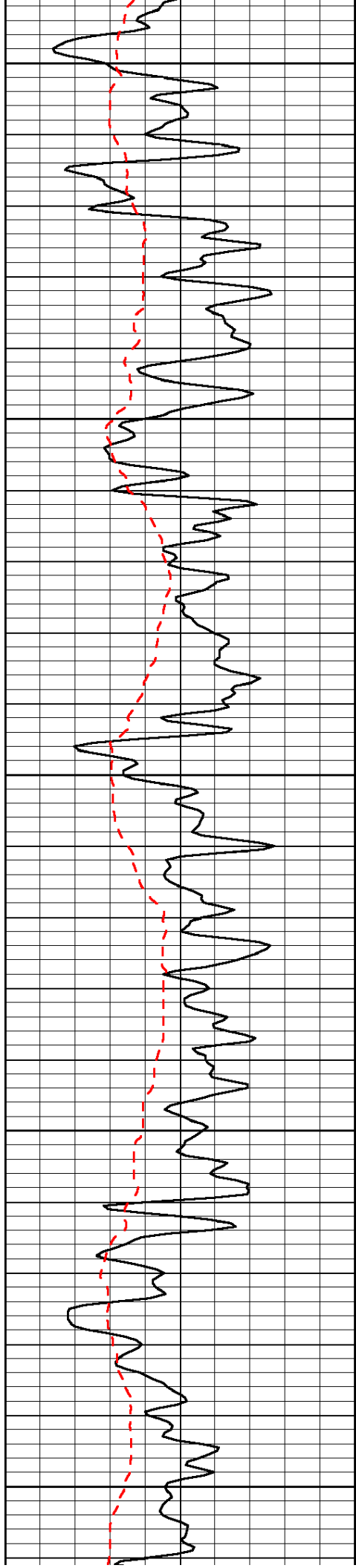


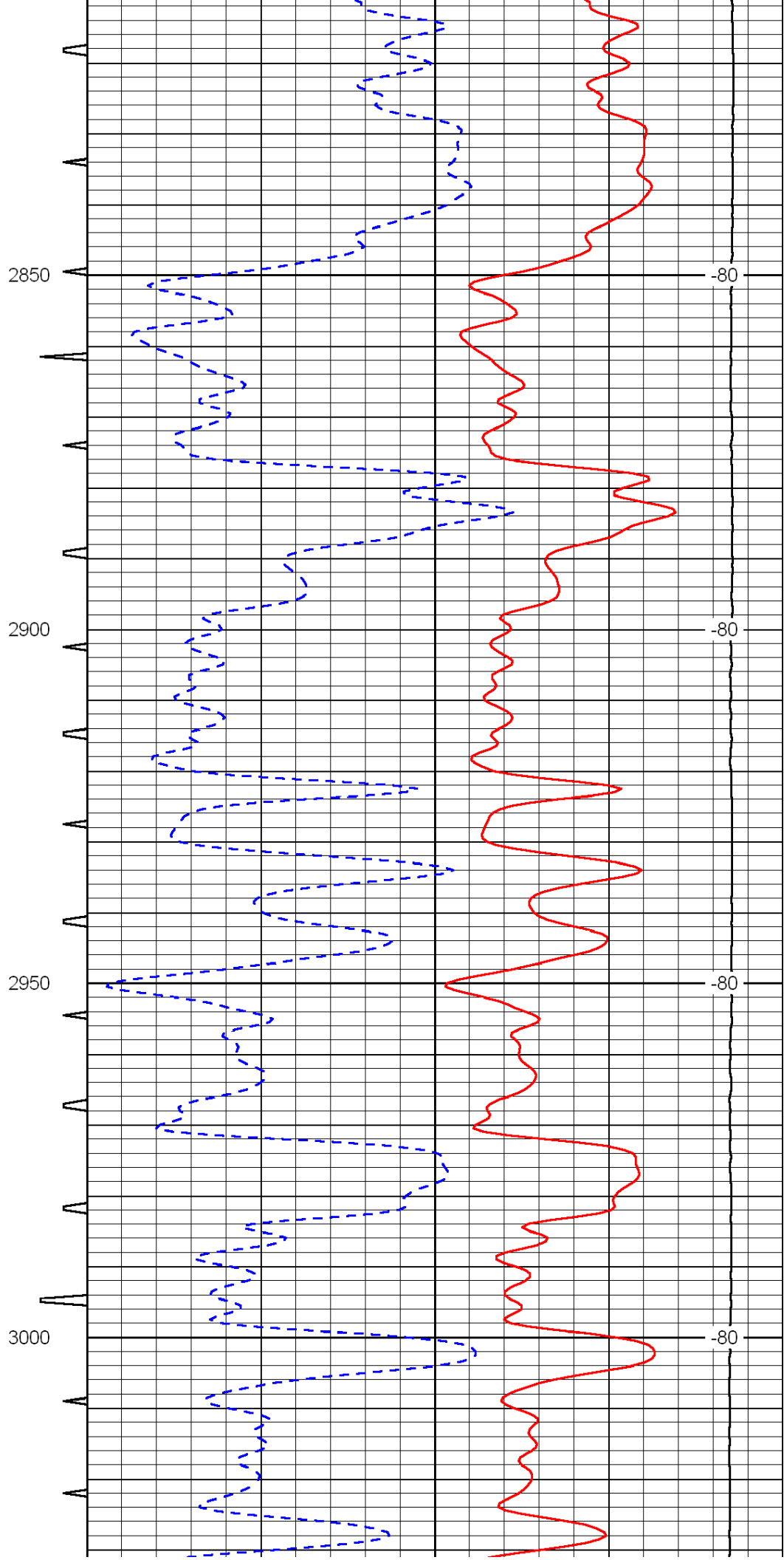
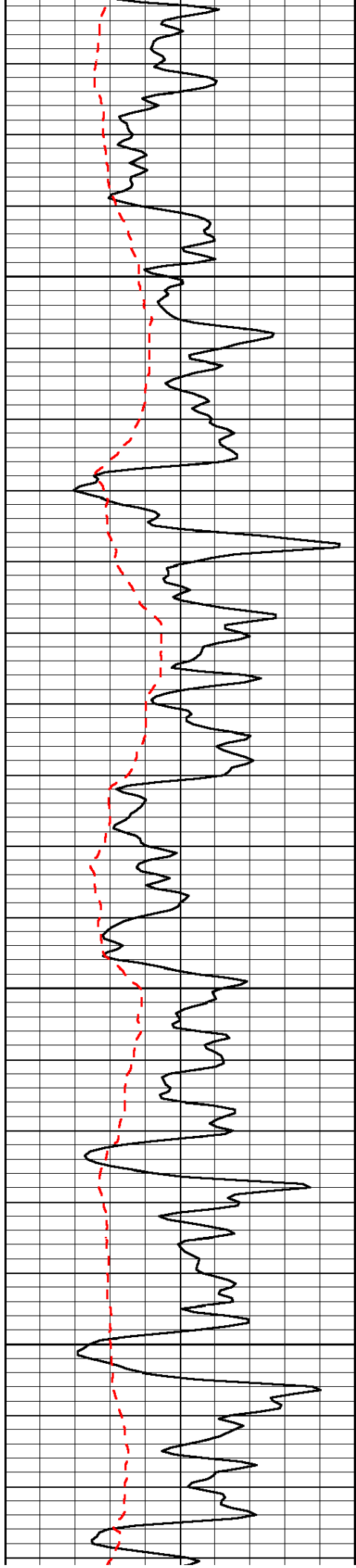


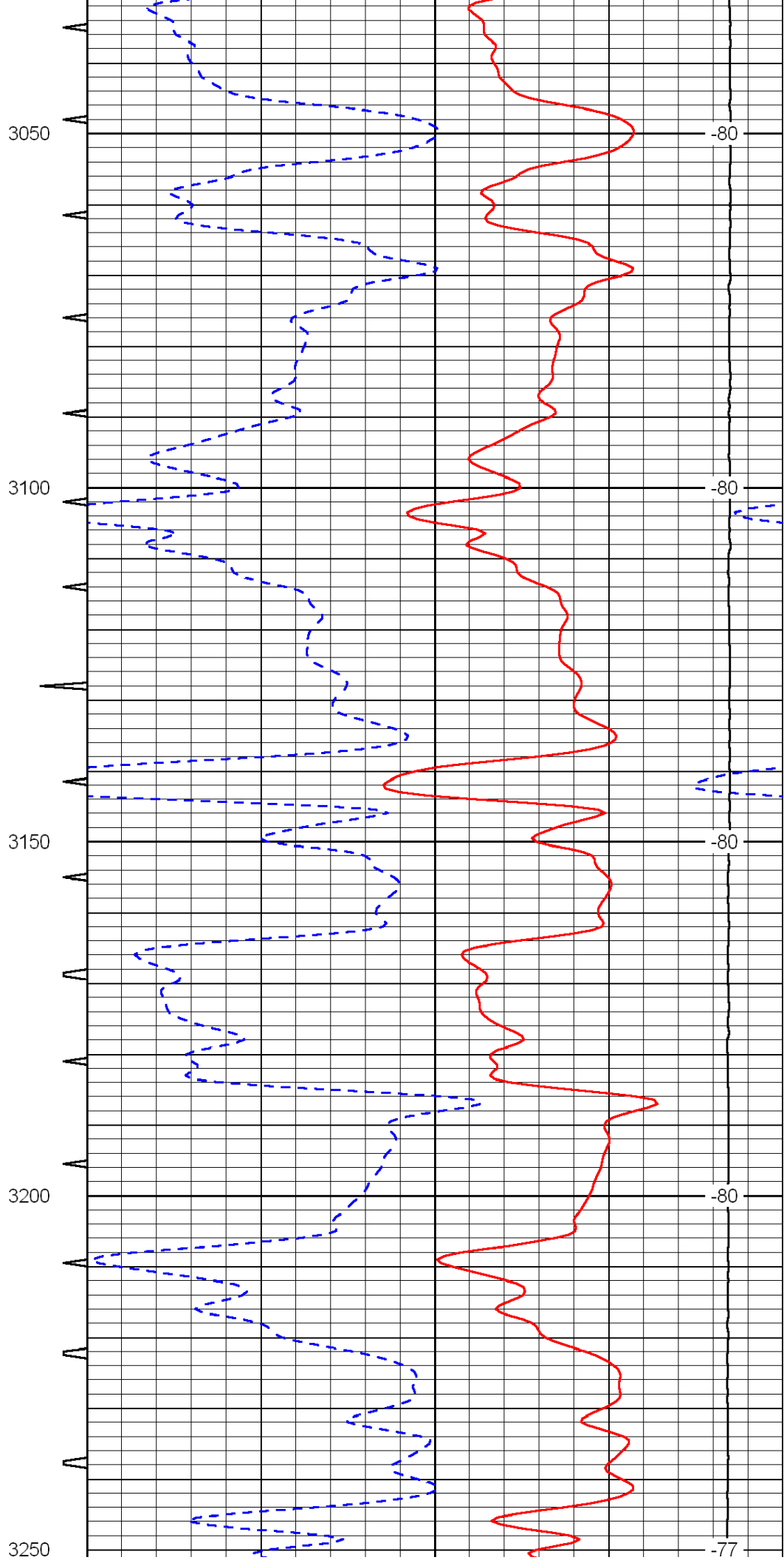
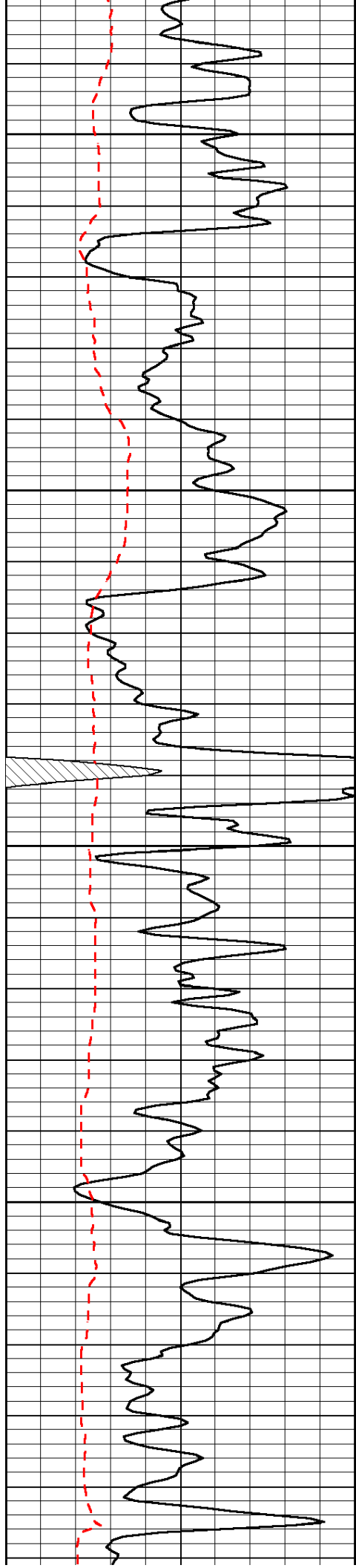


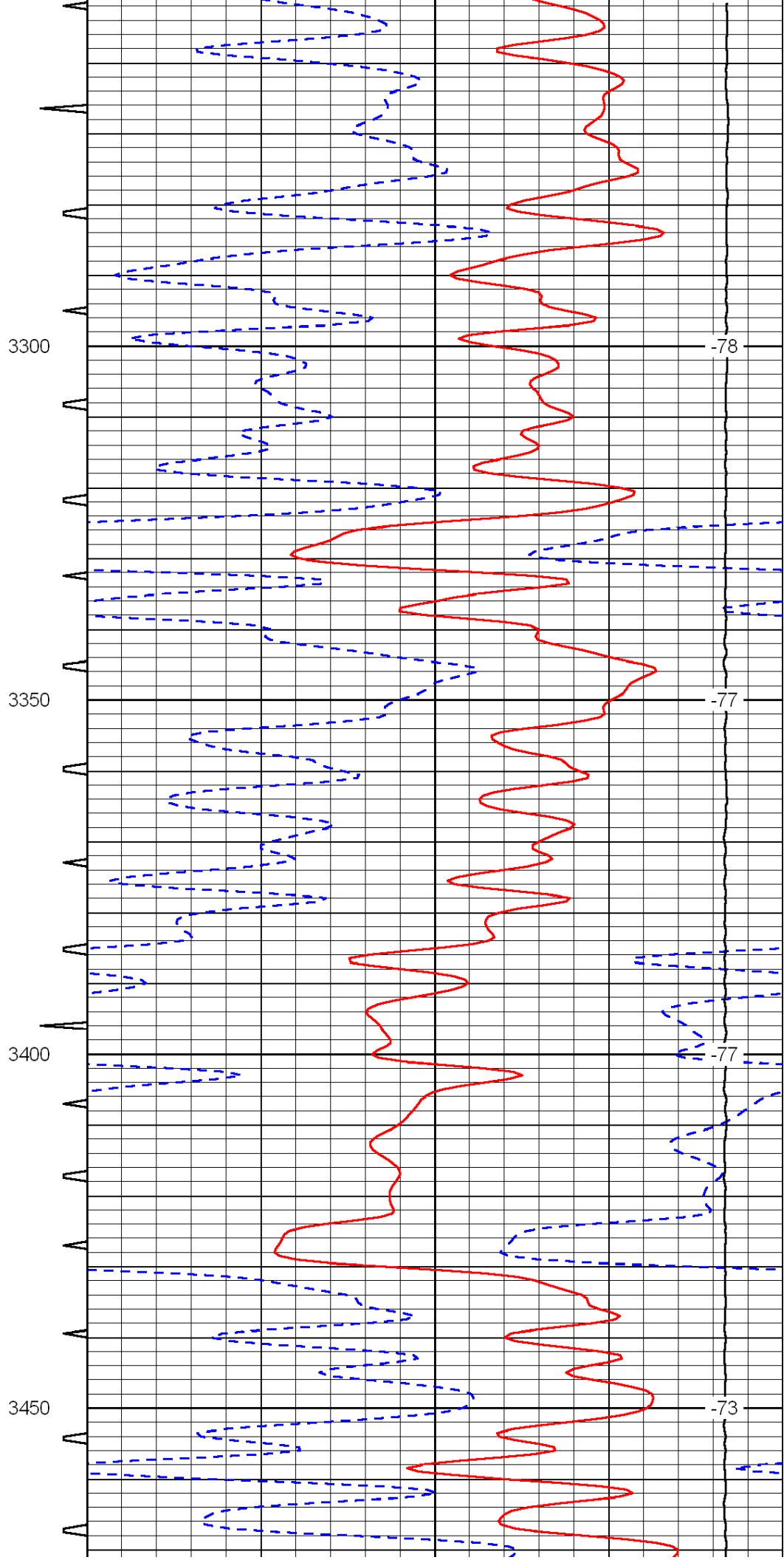
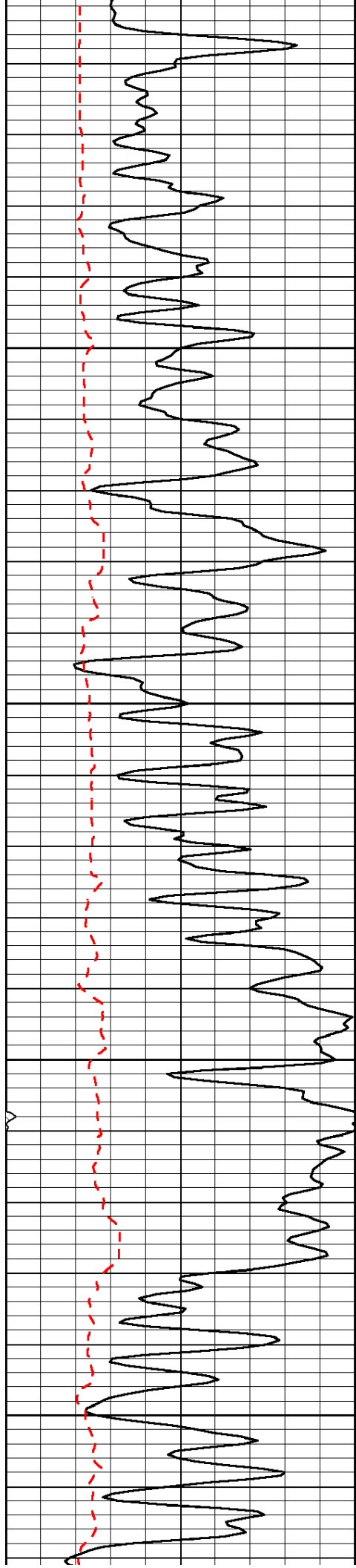


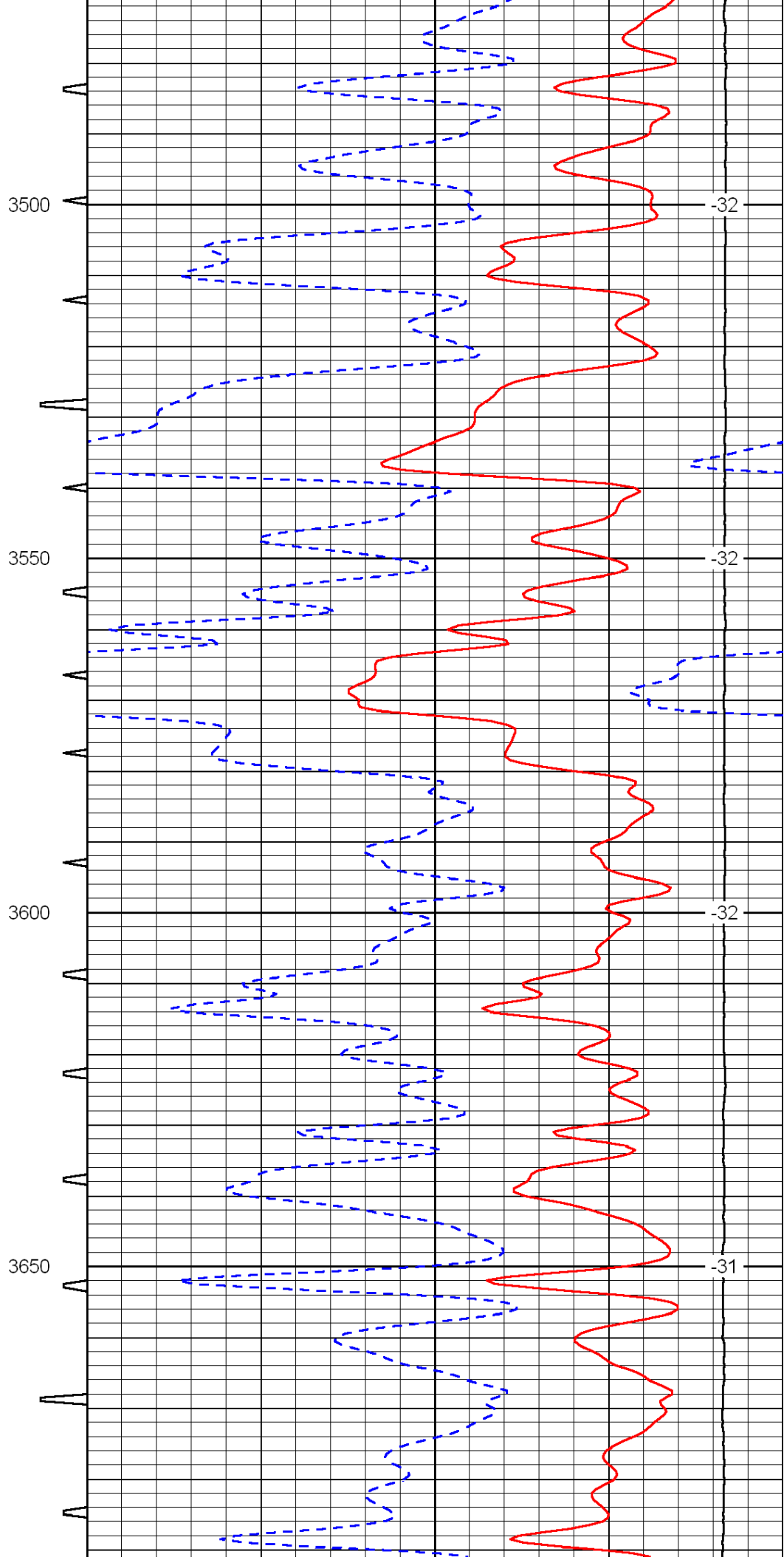
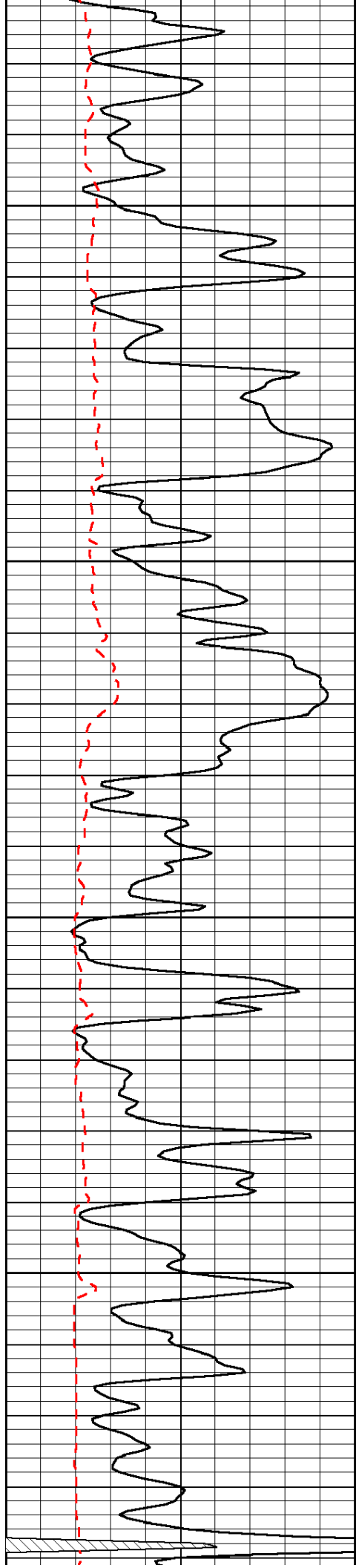


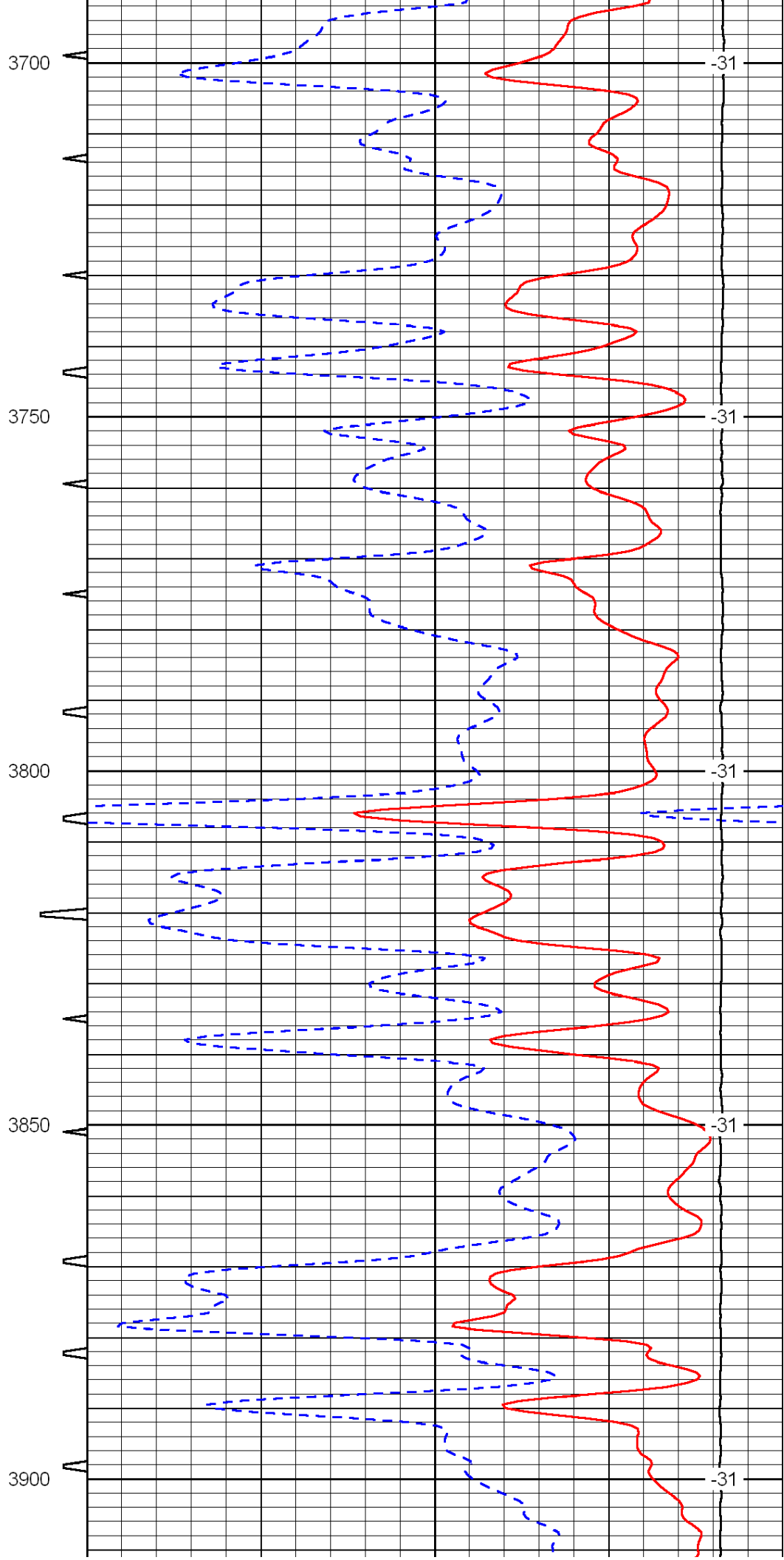
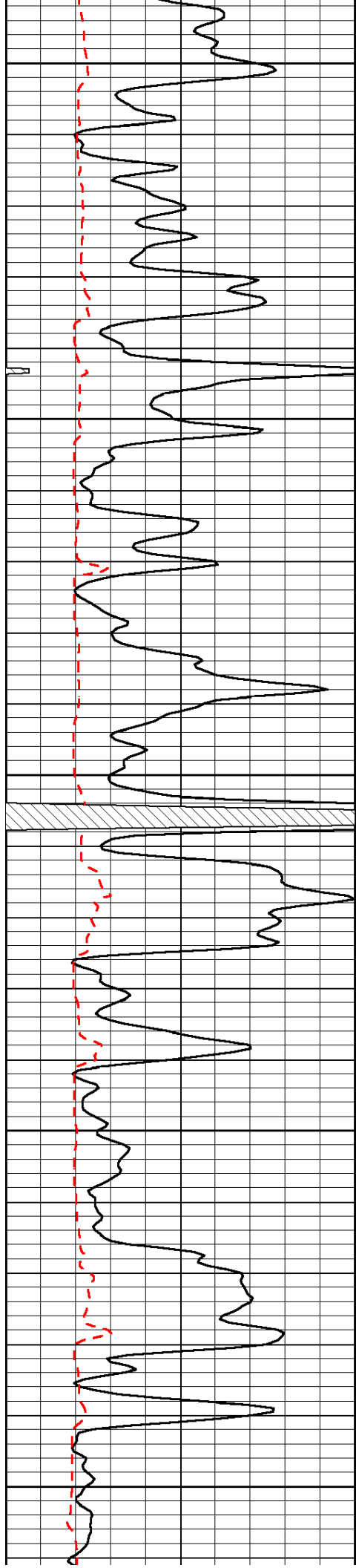


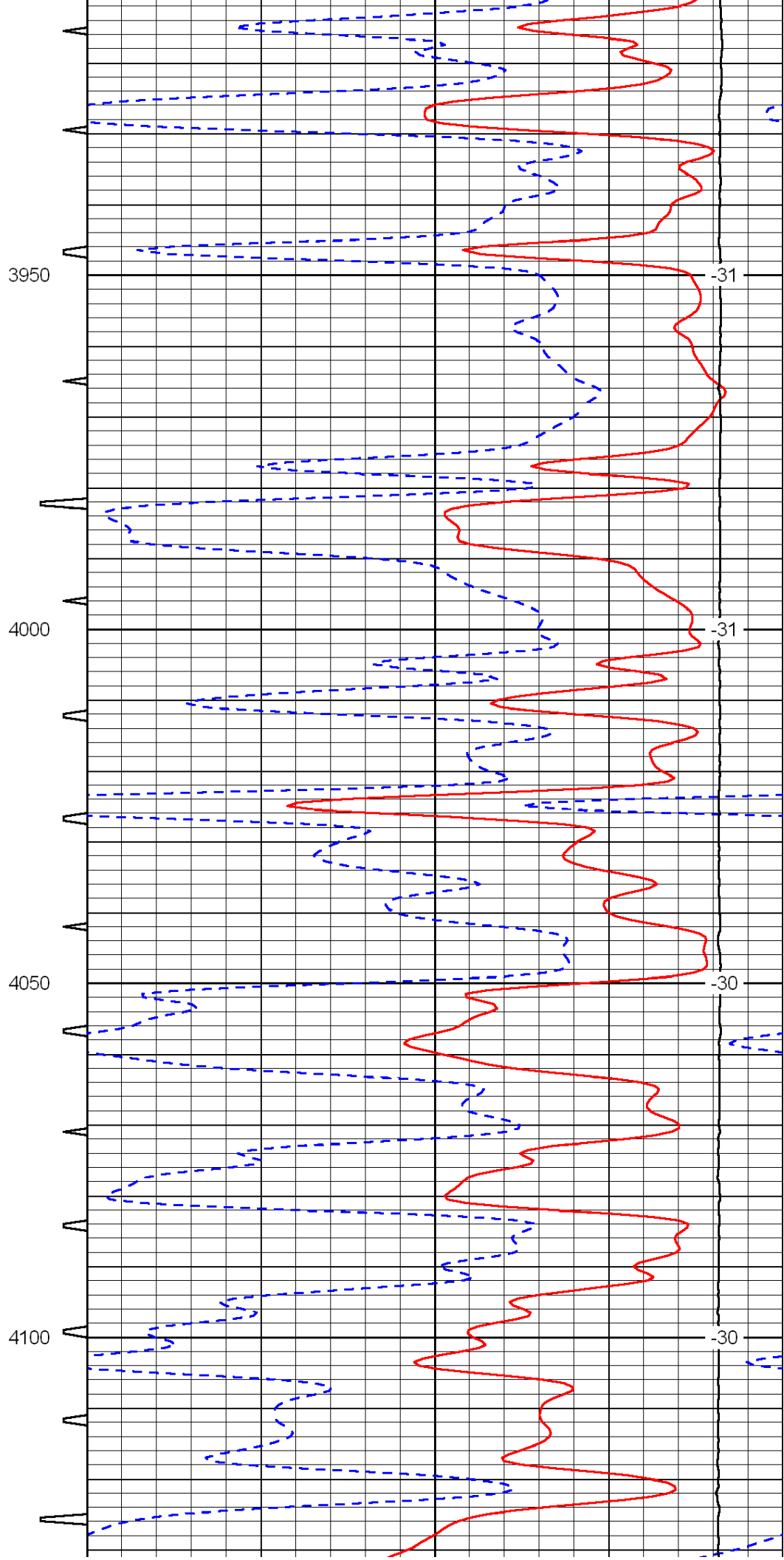
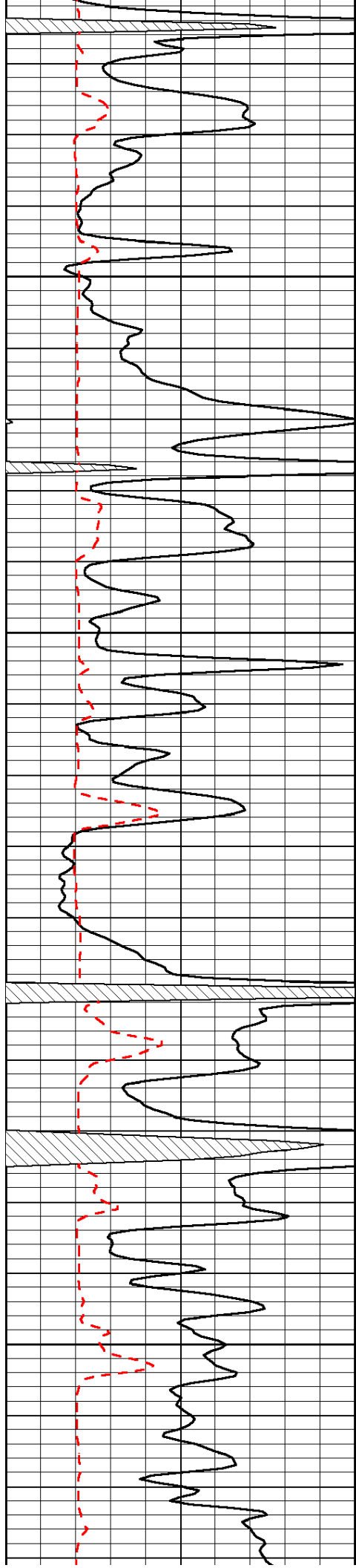


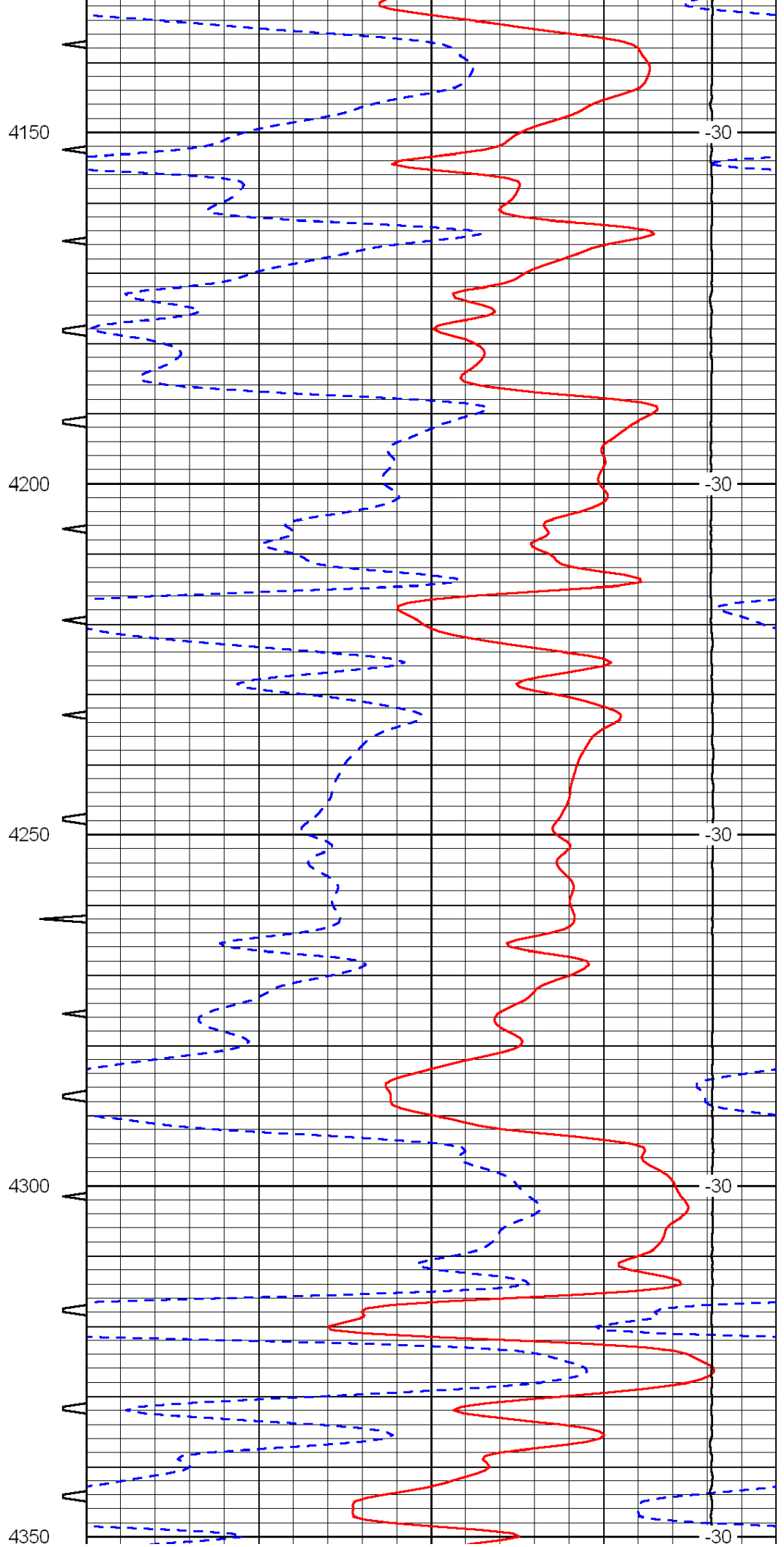
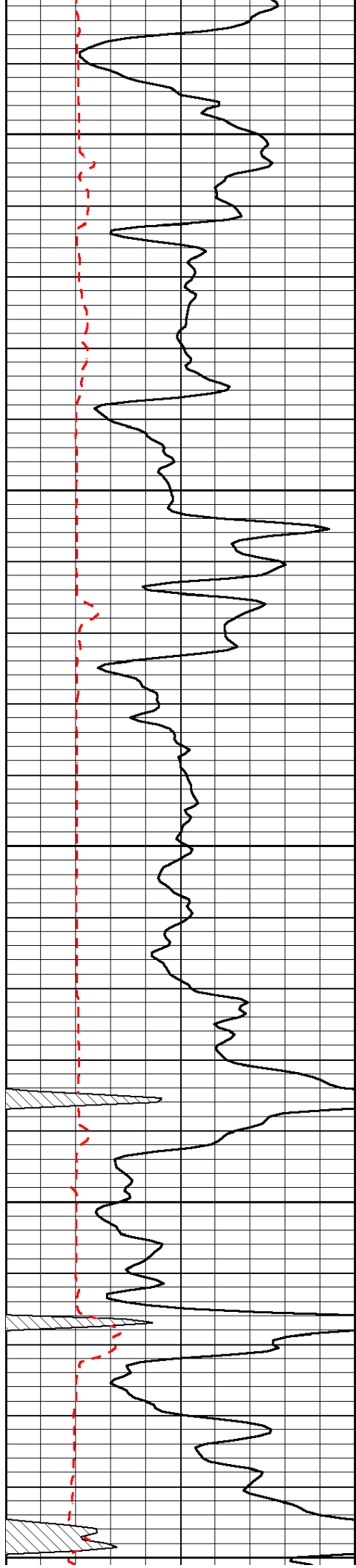


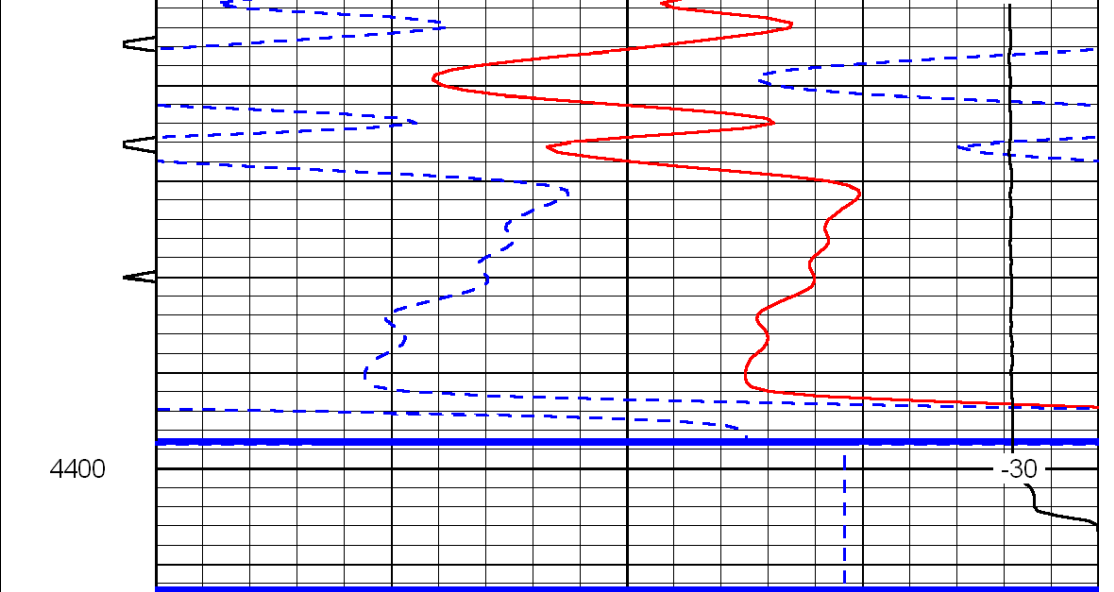
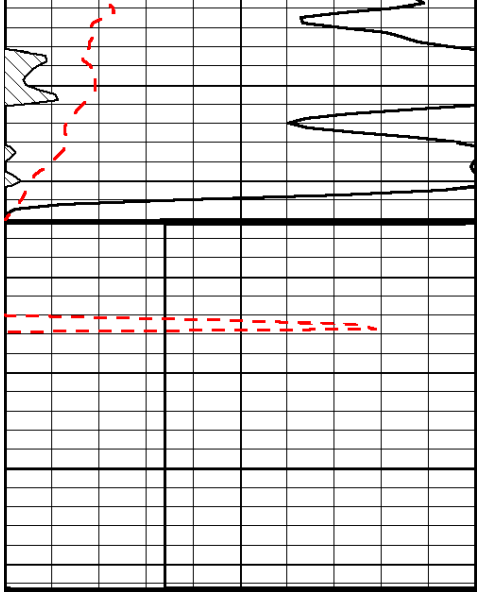












| | | | | | | |
|------|-----------|-----|-----------|-------|----------------------|-----|
| 0 | Gamma Ray | 150 | Sonic Int | 140 | Delta Time (usec/ft) | 40 |
| 150 | Gamma Ray | 300 | 5 | 0 | SPOR | -10 |
| 6 | Caliper | 16 | | 15000 | LTEN (lb) | 0 |
| LSPD | | | | | | |