



Microresistivity Log

DIGITAL LOG (785) 625-3858

API No. 15-195-22,645-00-00	Company Murfin Drilling Co., Inc.	Well Dietz "J" No. 1-16	Field Wildcat
	County Trego	State Kansas	
	Location 1150' FSL & 750' FWL		Other Services CDL/CNL DIL/BHCS
	Sec: 16	Twp: 12 S	Rge: 24 W
Permanent Datum Log Measured From Drilling Measured From	Ground Level Kelly Bushing From Kelly Bushing	Elevation 2473 11 Ft. Above Perm. Datum	
Date	04/09/2010		

Run Number	Two
Depth Driller	4400
Depth Logger	4400
Bottom Logged Interval	4399
Top Log Interval	3500
Casing Driller	8.325 @ 225
Casing Logger	223
Bit Size	7.875
Type Fluid in Hole	Chemical
Salinity, ppm CL	6.500
Density / Viscosity	9.1 51
pH / Fluid Loss	10.0 6.4
Source of Sample	Flowline
Rm @ Meas. Temp	0.95 @ 65
Rmf @ Meas. Temp	0.71 @ 65
Rmc @ Meas. Temp	1.28 @ 65
Source of Rmf / Rmc	Charts
Rm @ BHT	.51 @ 122
Operating Rig Time	5 Hours
Max Rec. Temp. F	122
Equipment Number	10
Location	Hays
Recorded By	Jason Wellbrock
Witnessed By	Brad Ryan
	Jim Schuler

<<< Fold Here >>>

All interpretations are opinions based on inferences from electrical or other measurements and we cannot and do not guarantee the accuracy or correctness of any interpretation, and we shall not, except in the case of gross or willful negligence on our part, be liable or responsible for any loss, costs, damages, or expenses incurred or sustained by anyone resulting from any interpretation made by any of our officers, agents or employees. These interpretations are also subject to our general terms and conditions set out in our current Price Schedule.

Comments

Thank you for using Log-Tech, Inc.
(785) 625-3858

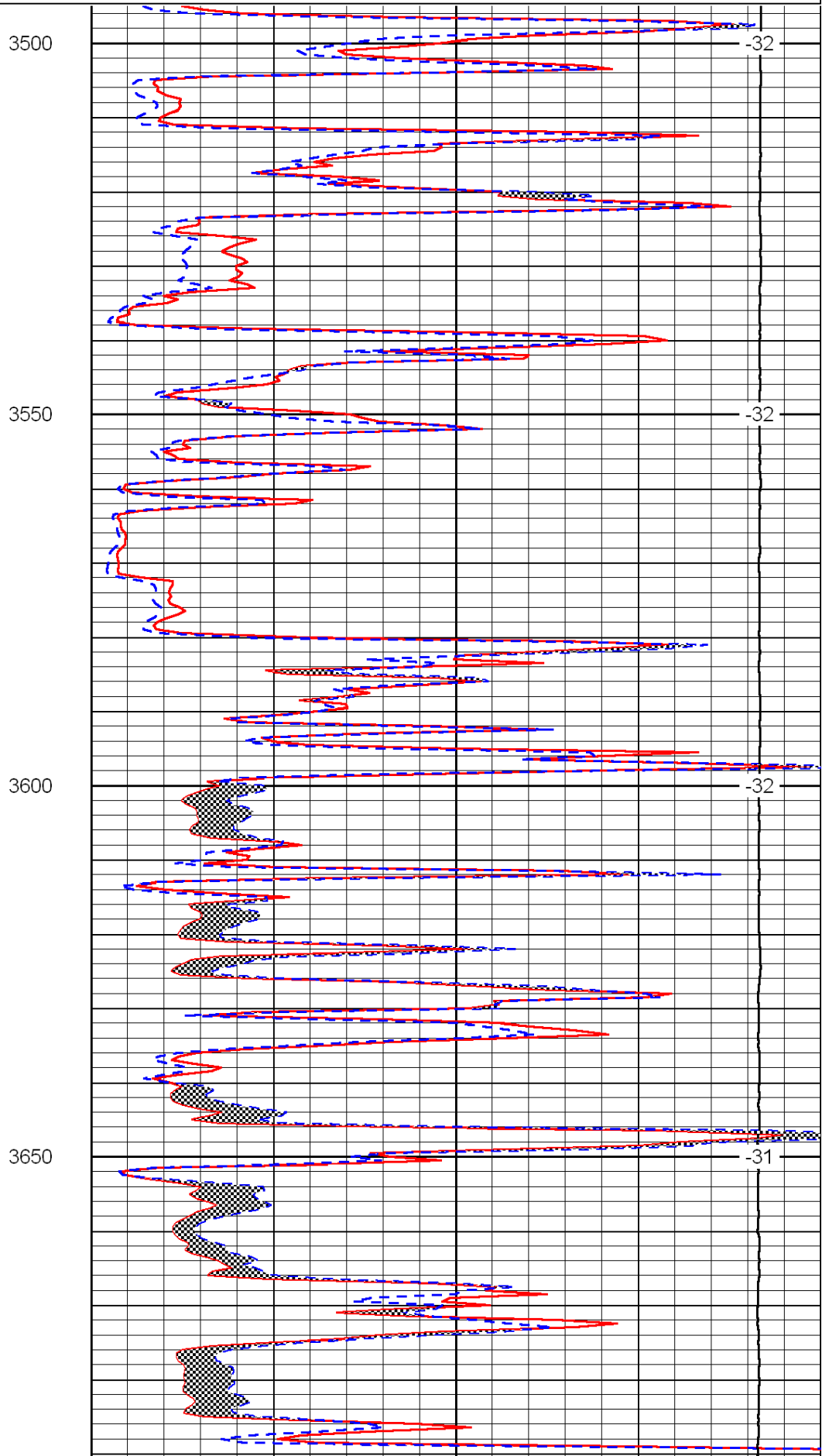
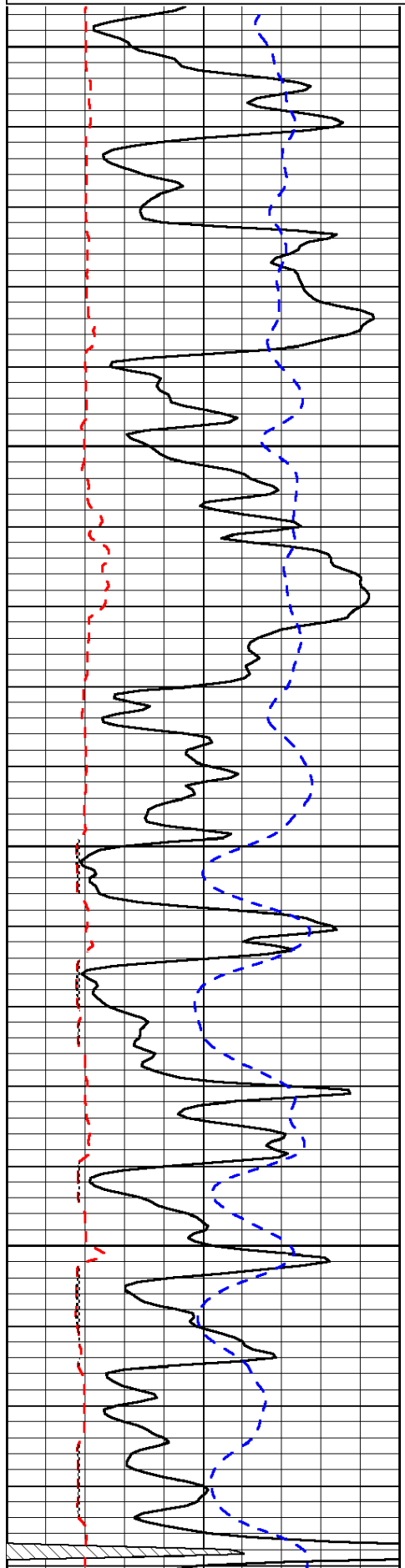
Voda Road, 1 S, 1 E, 1/2 S, E Into

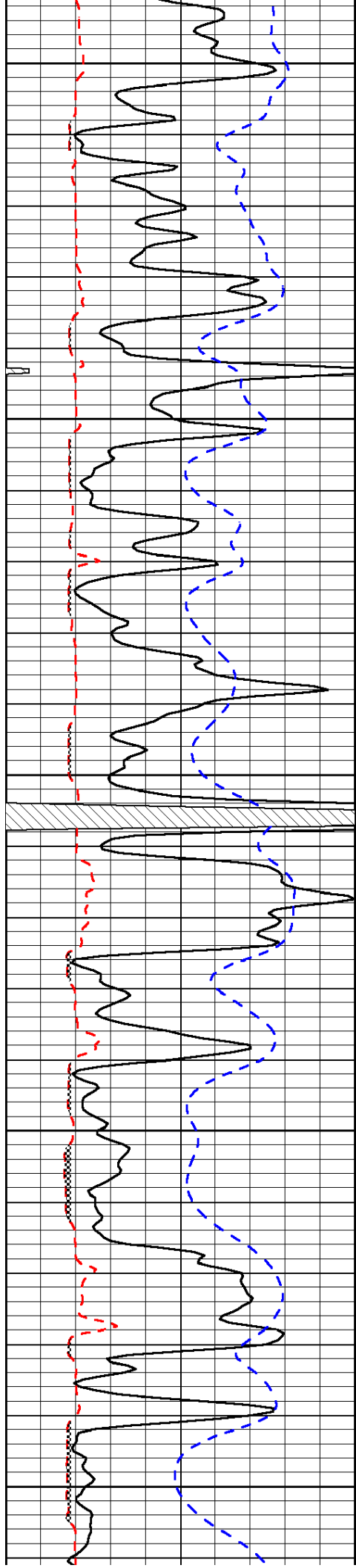
Database File: c:\warrior\data\murfin_dietz j no. 1-16\murfinhd.db
 Dataset Pathname: dil/murf2in
 Presentation Format: micro
 Dataset Creation: Sat Apr 10 00:57:05 2010
 Charted by: Depth in Feet scaled 1:240

0	Gamma Ray	150
6	Micro Log Caliper (GAPI)	16
-200	SP (mV)	0

0	Micro Inverse 1 X 1	40
0	Micro Normal 2"	40
15000	Line Weight	0

LSPD





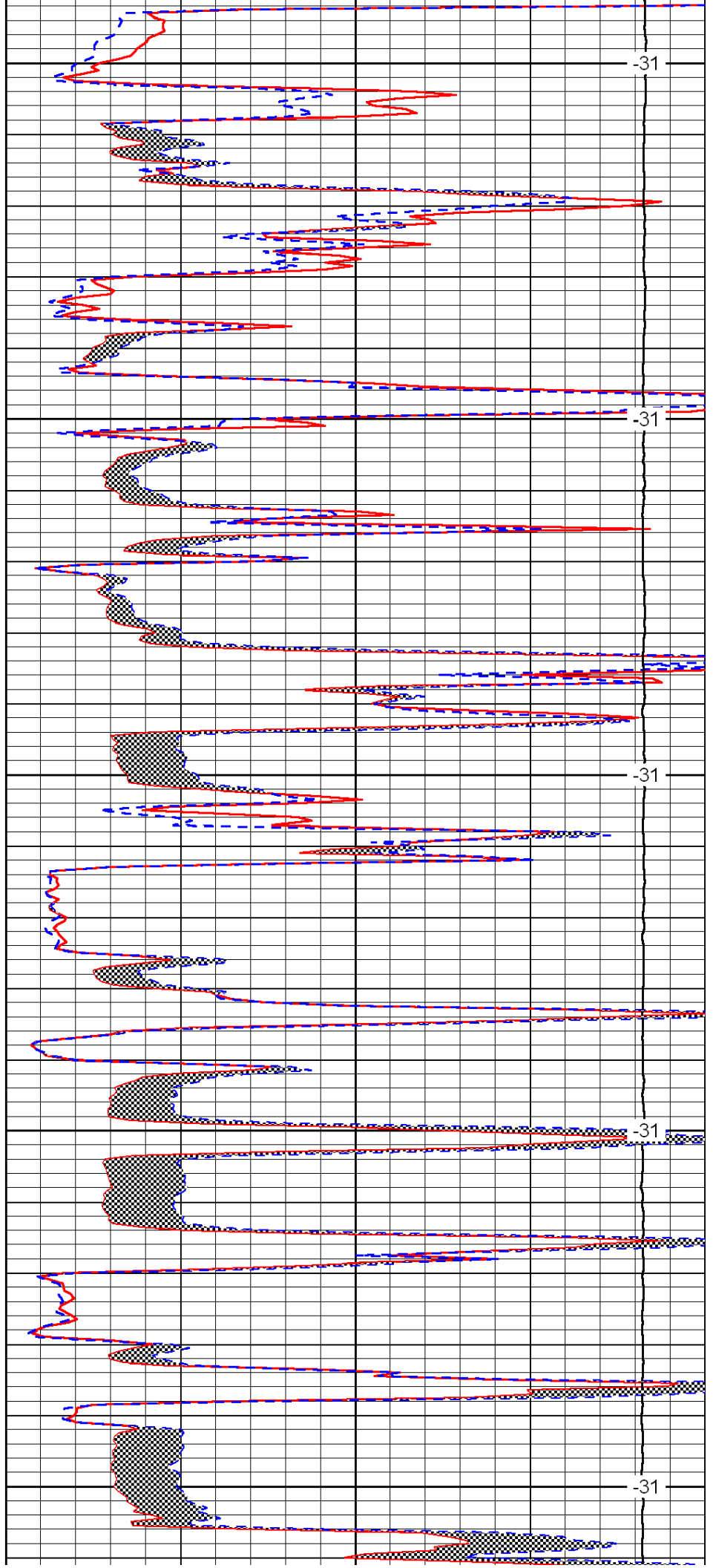
3700

3750

3800

3850

3900



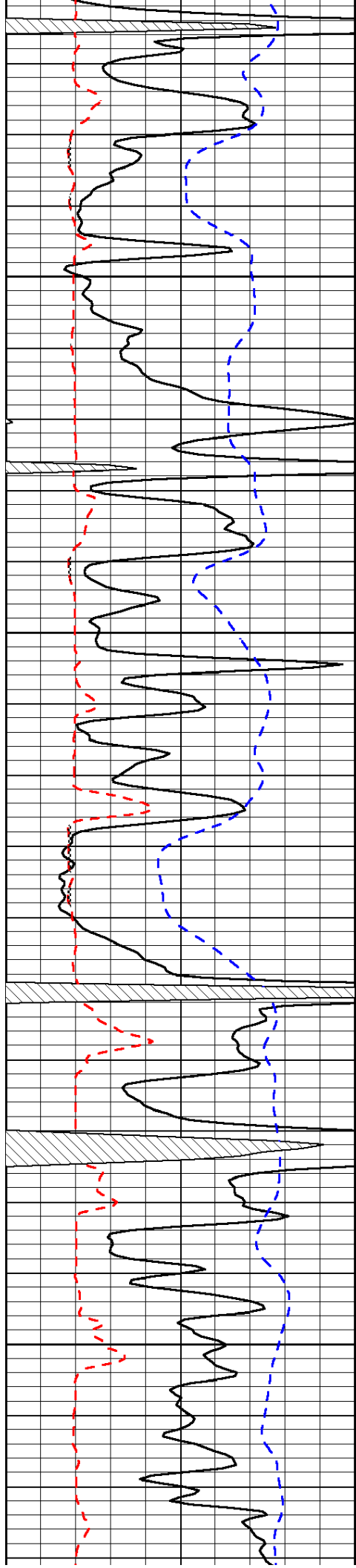
-31

-31

-31

-31

-31

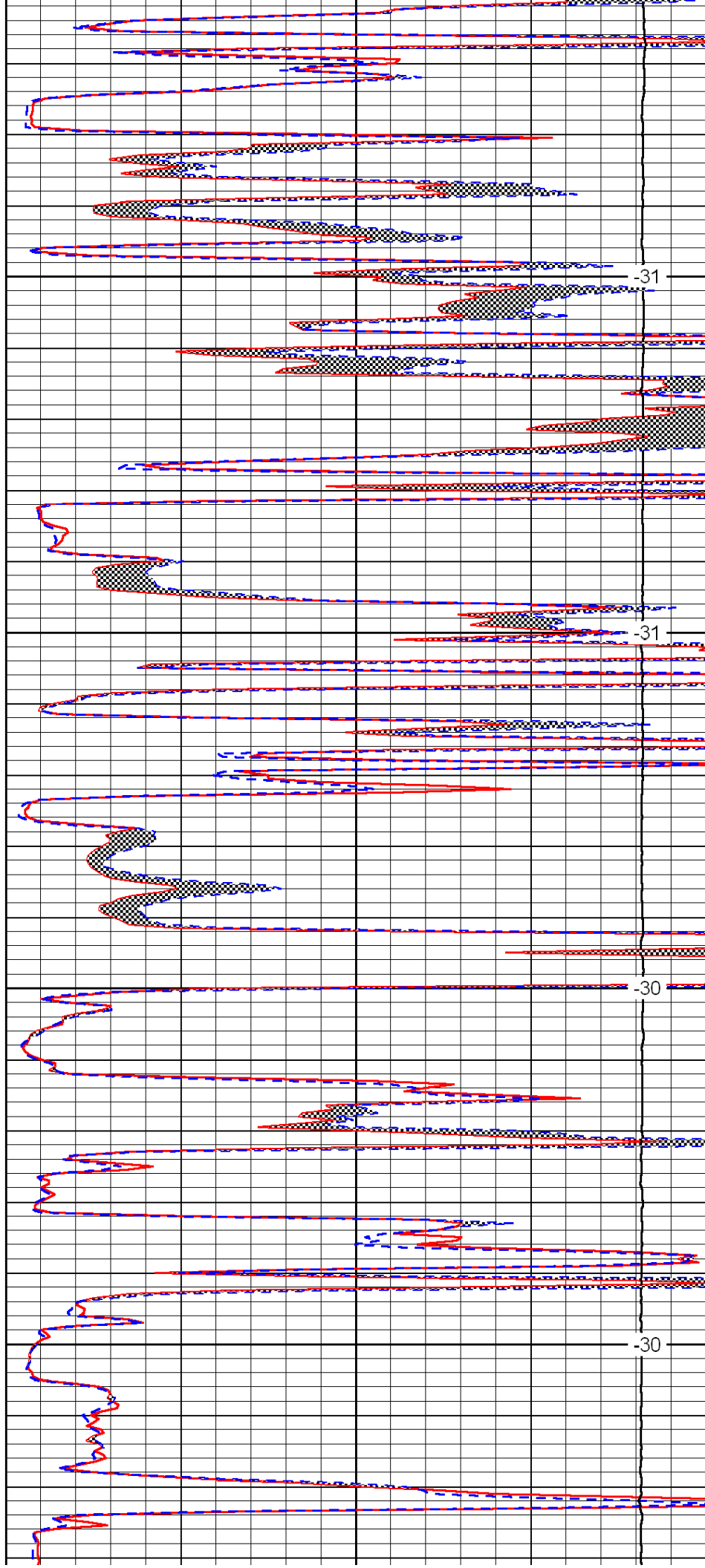


3950

4000

4050

4100

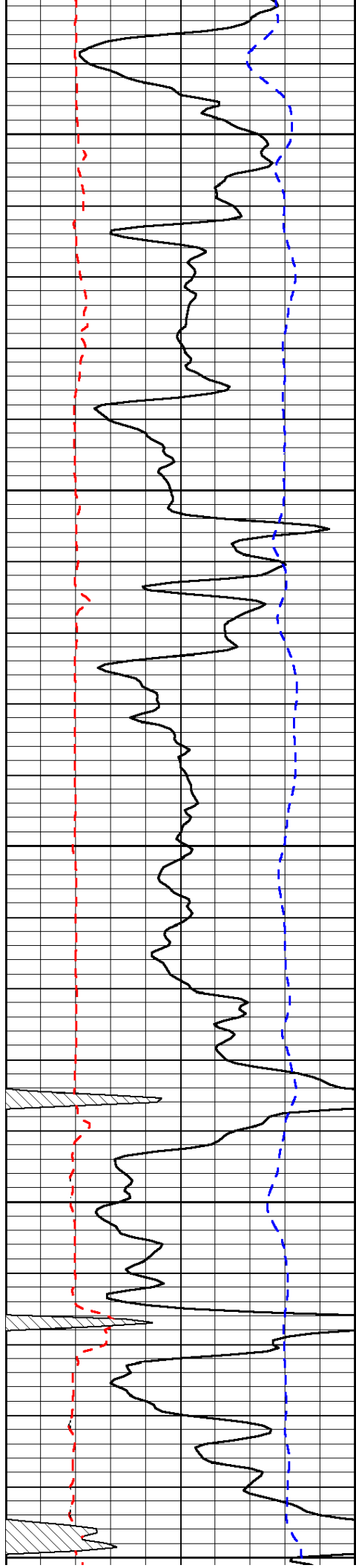


-31

-31

-30

-30



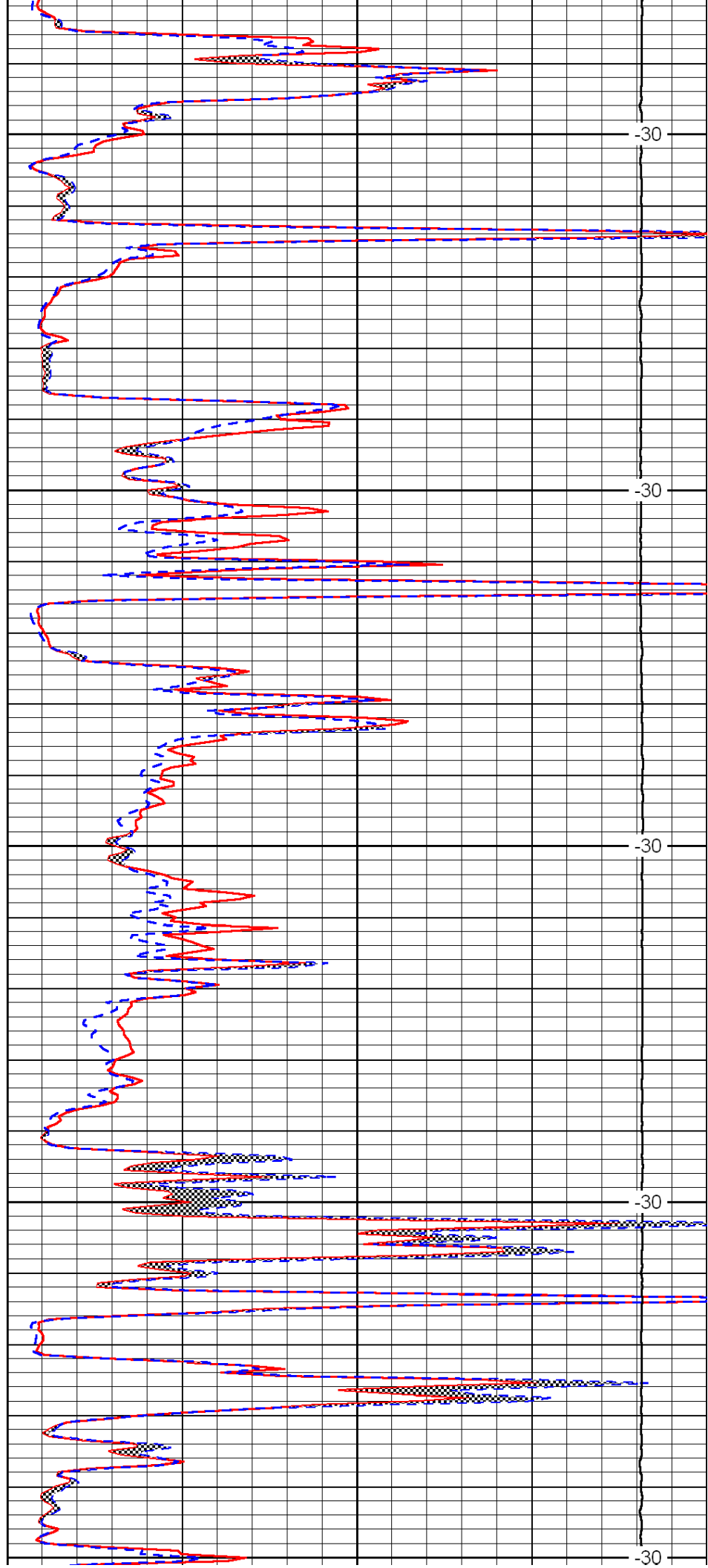
4150

4200

4250

4300

4350



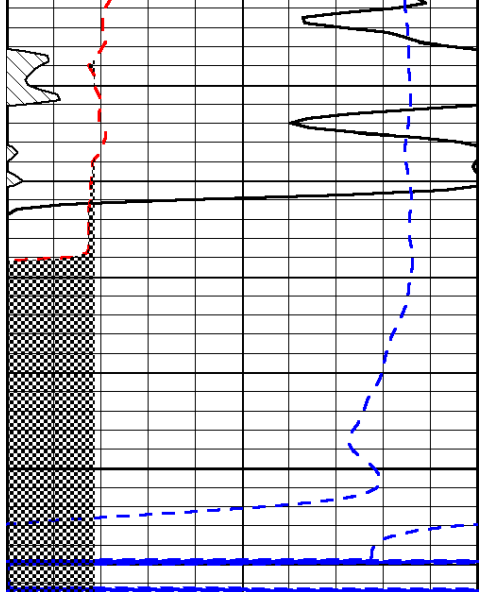
-30

-30

-30

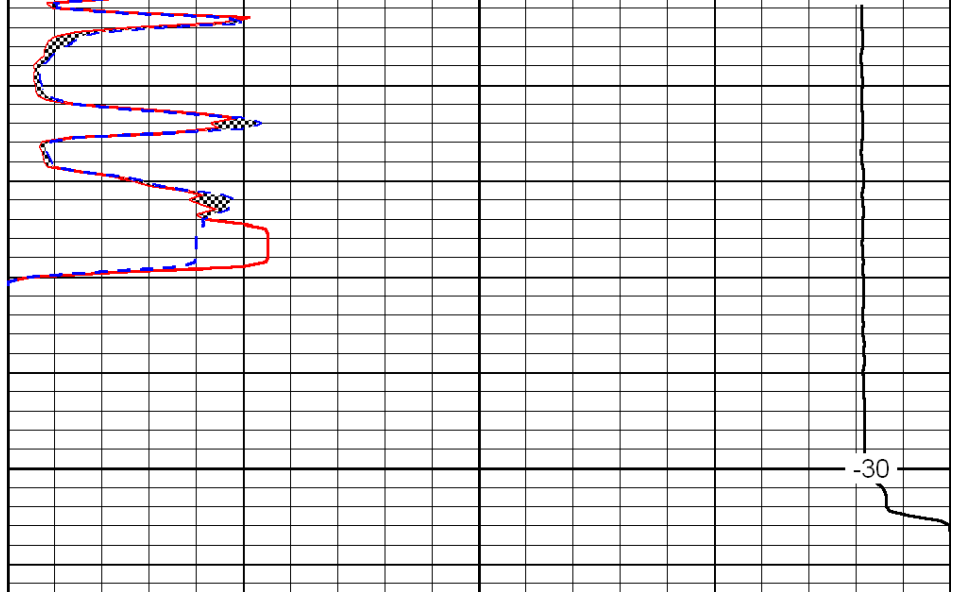
-30

-30



0	Gamma Ray	150
6	Micro Log Caliper (GAPI)	16
-200	SP (mV)	0

4400



0	Micro Inverse 1 X 1	40
0	Micro Normal 2'	40
15000	Line Weight	0

-30

LSPD